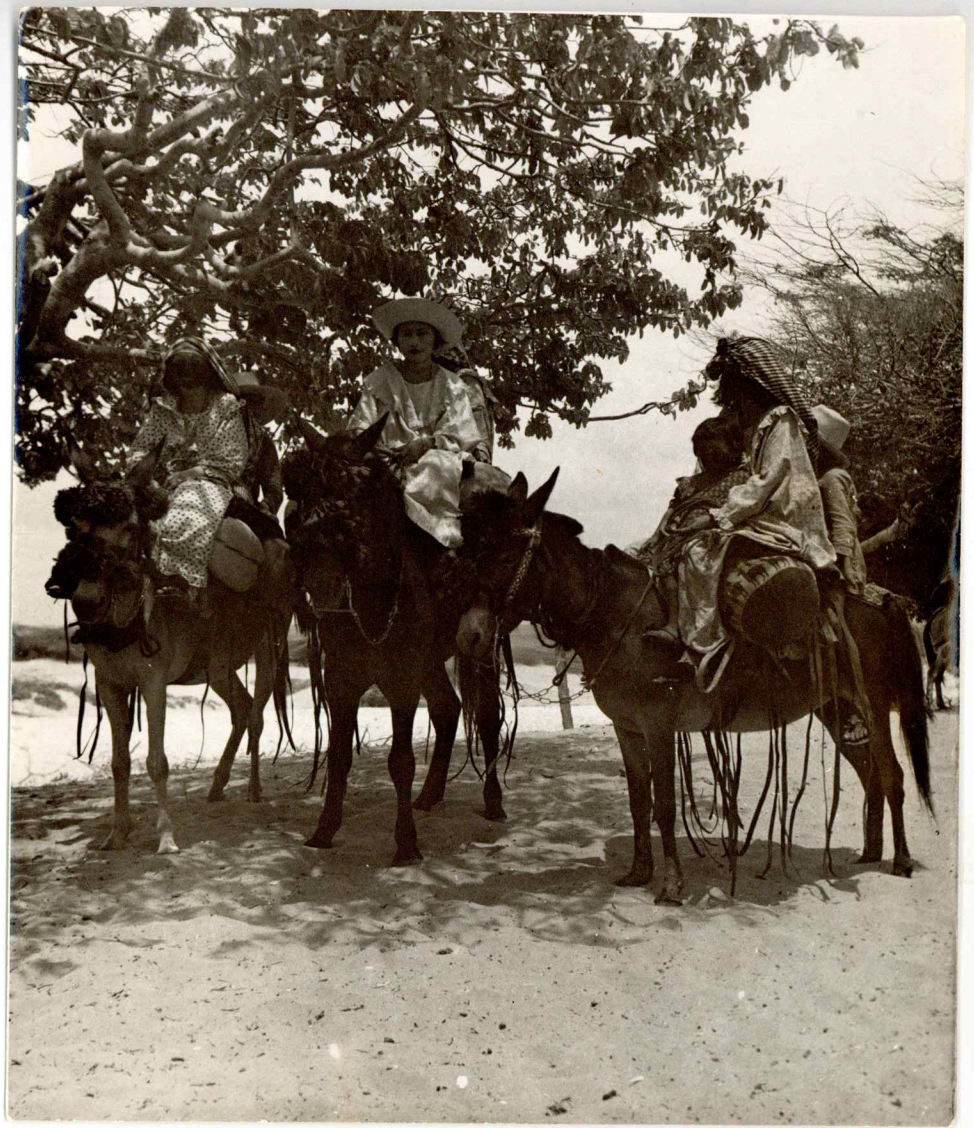




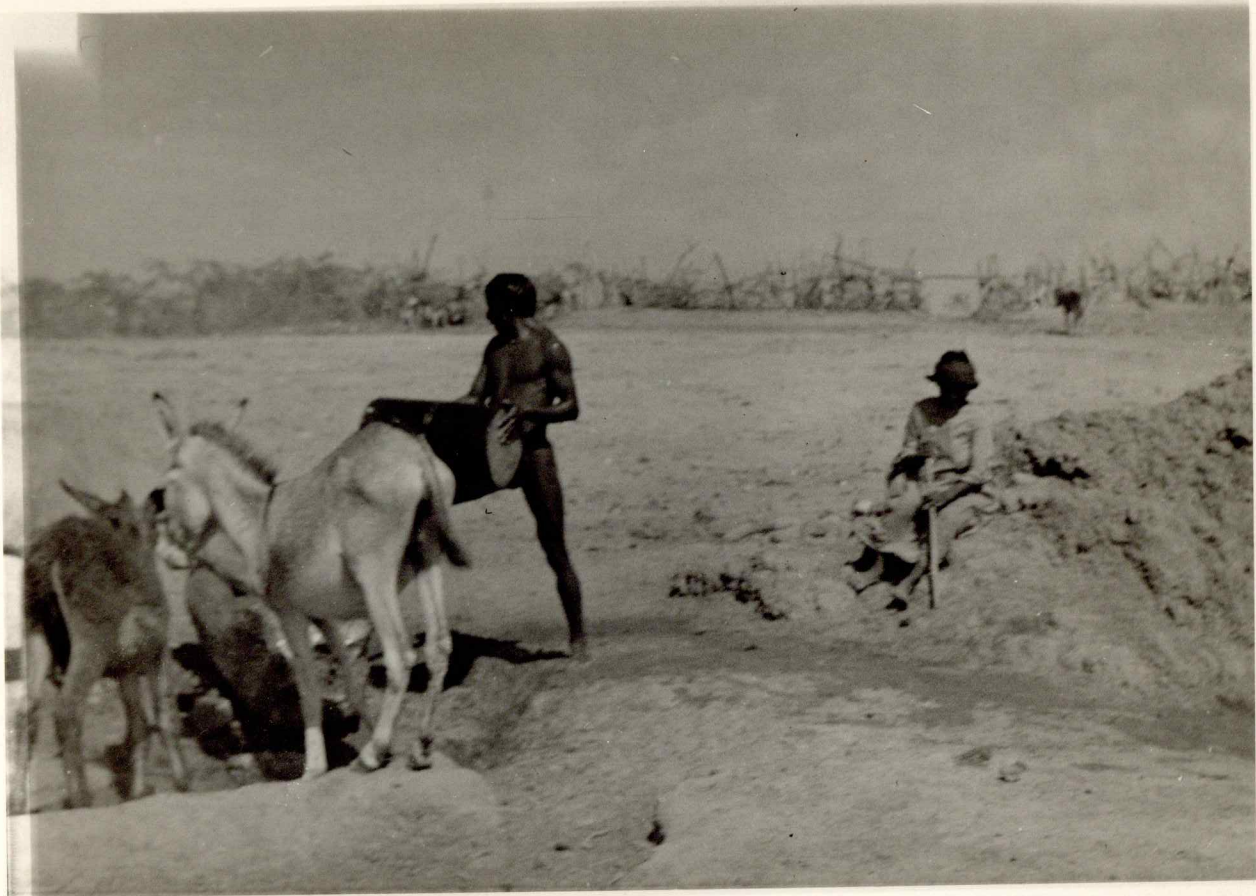


183

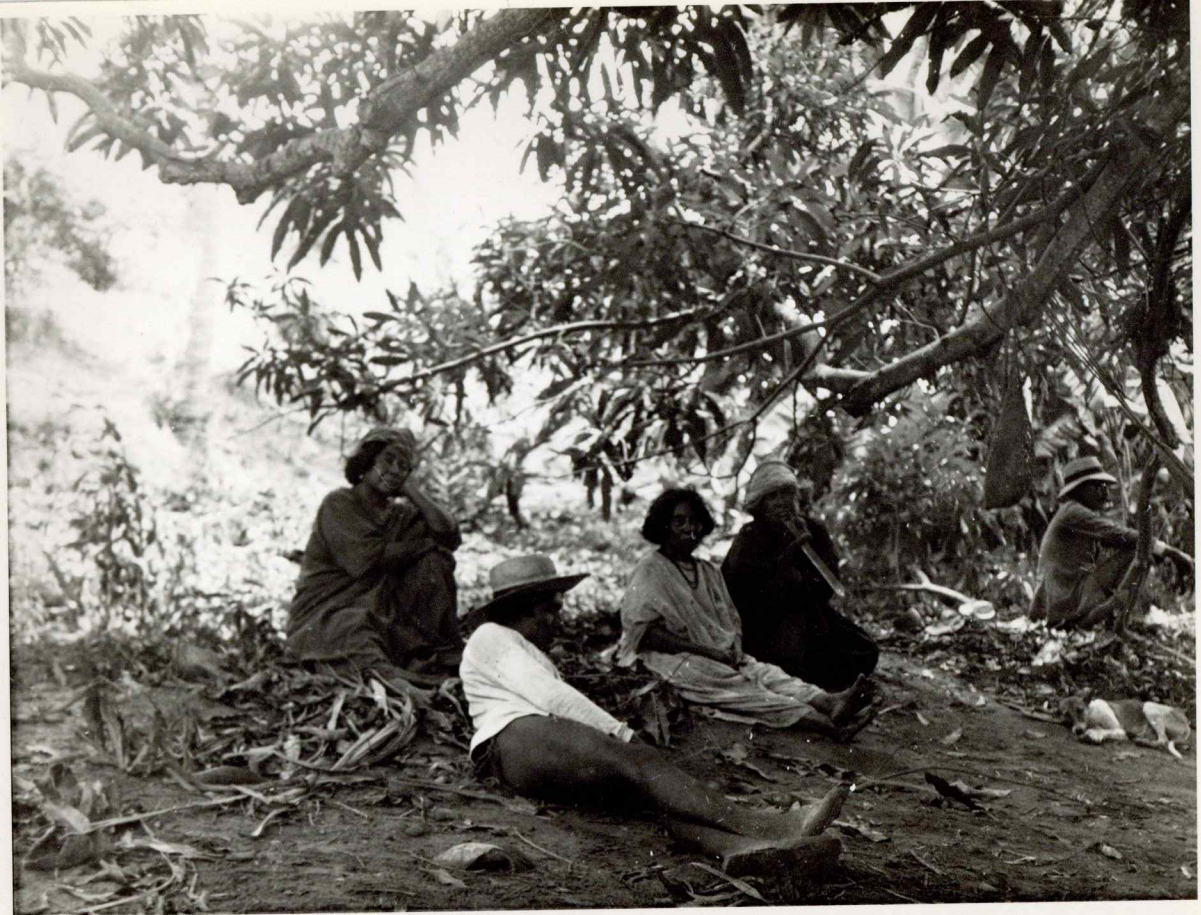
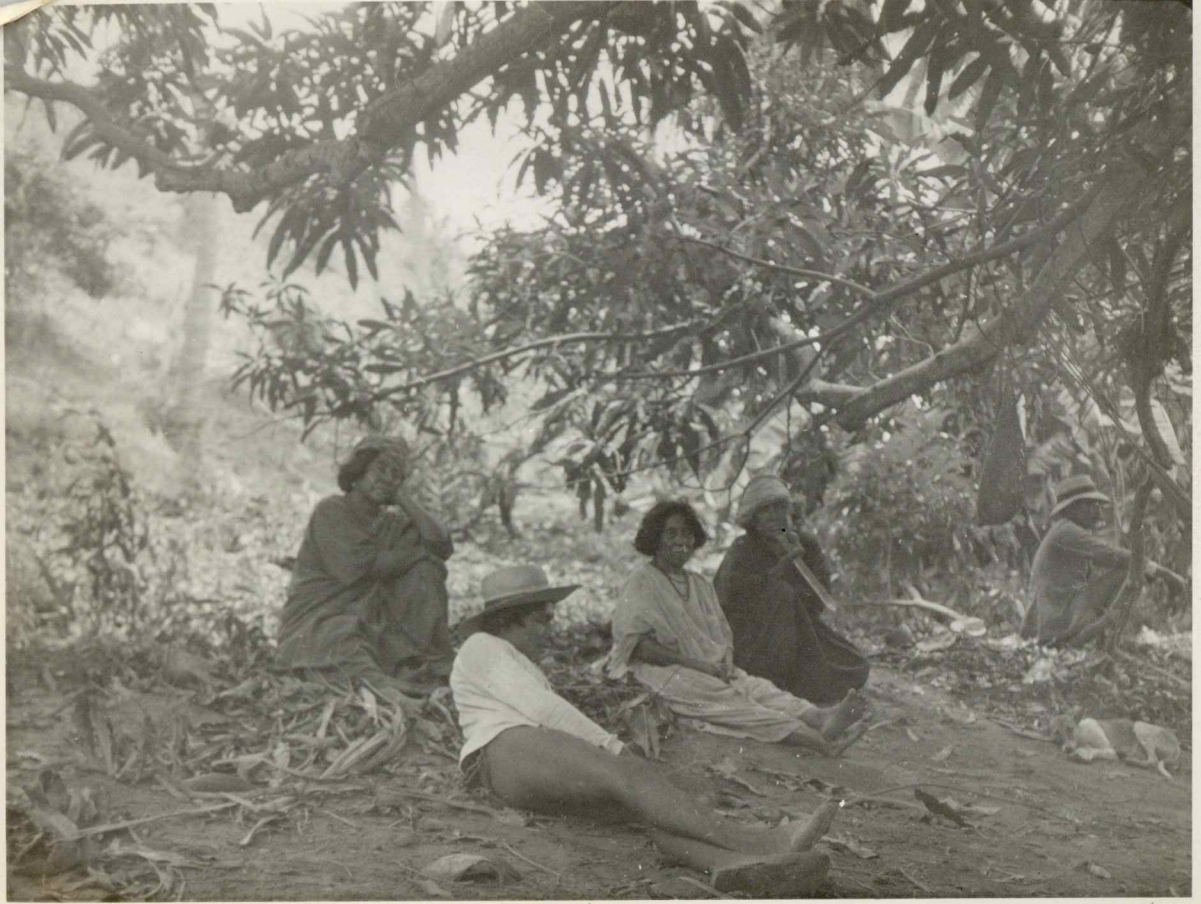
[Magician (mala) blessing sheep]



N4-148505



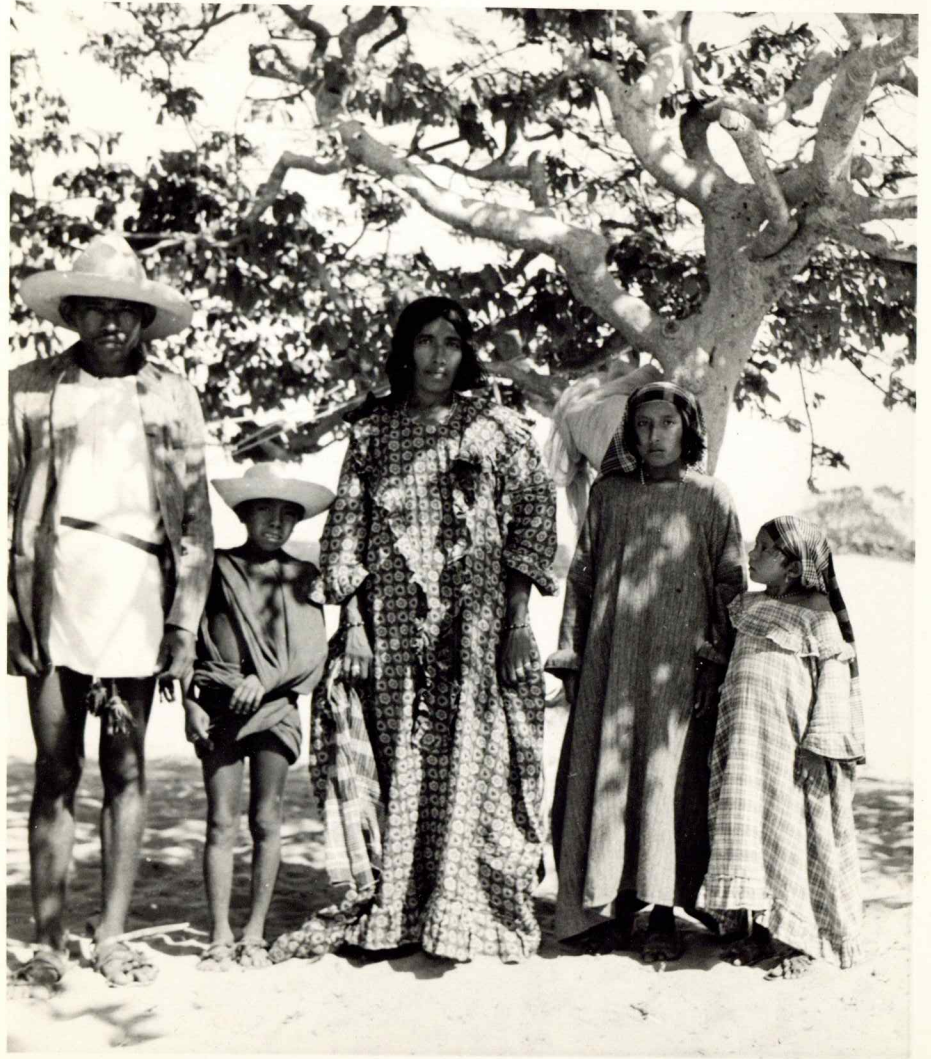
N4-148526



N4-148549

N4-148549

173



NH-148553



N4-148553



N4-148553



N4-148554

177



fac.

S.P.

NH-148562

182

NH-148562

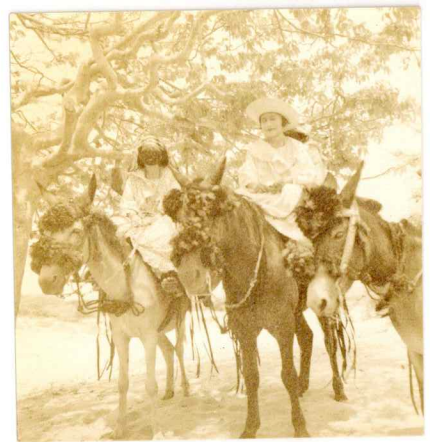
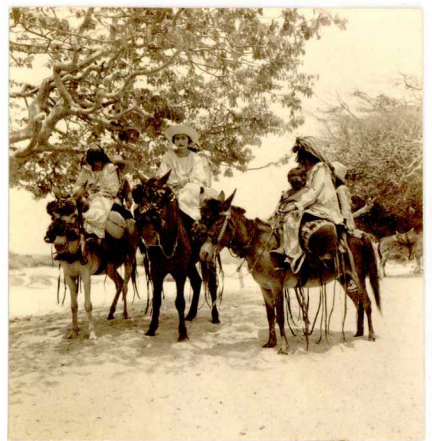
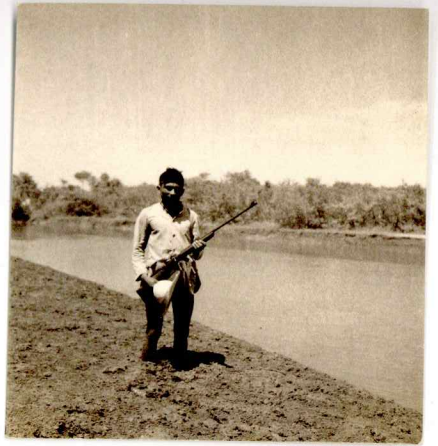


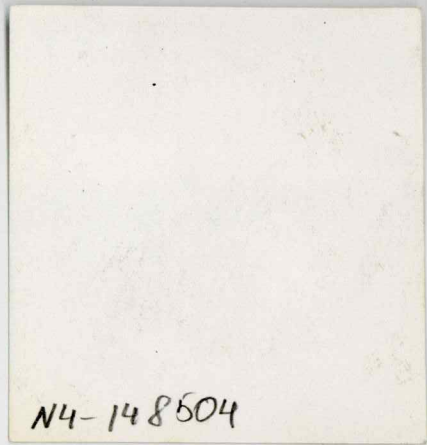


681

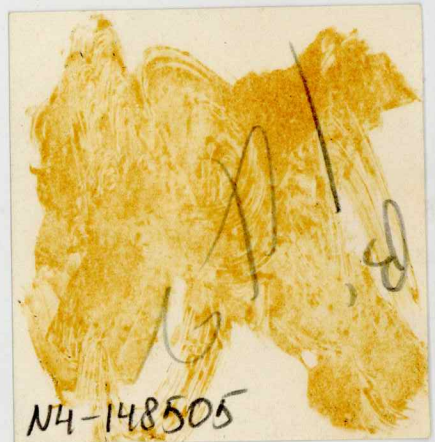
N4-148562

140-185

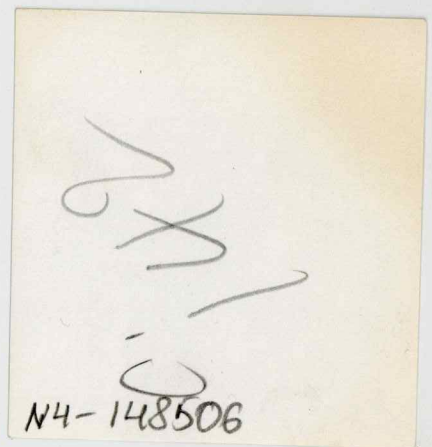




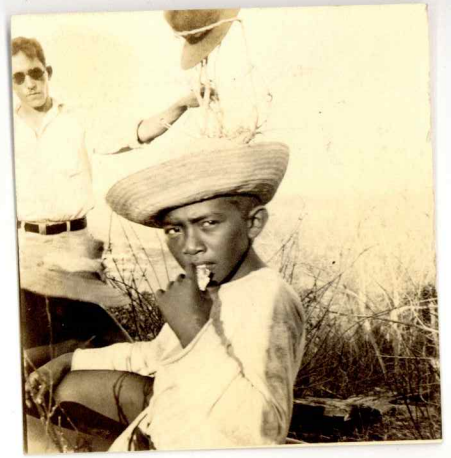
N4-148504



N4-148505



N4-148506





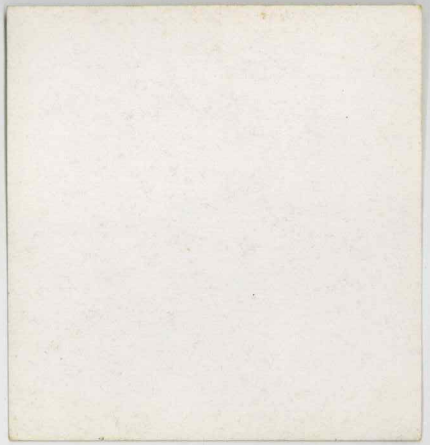


D.
140
N4-148510



140
N4-148512

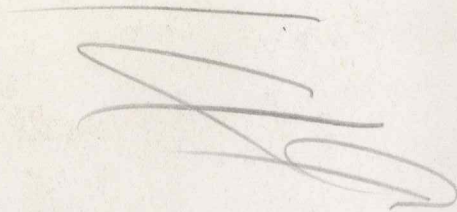






148

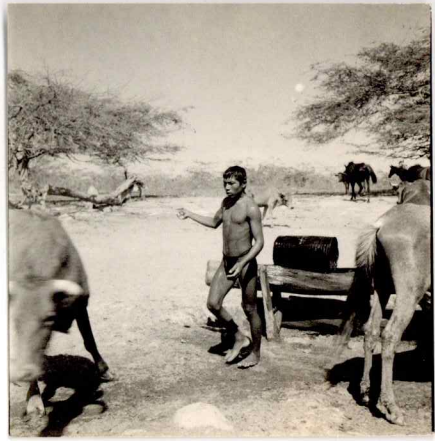
N4-148516

A handwritten signature or scribble in dark ink, consisting of several overlapping, fluid strokes that are difficult to decipher.

N4-148517

150

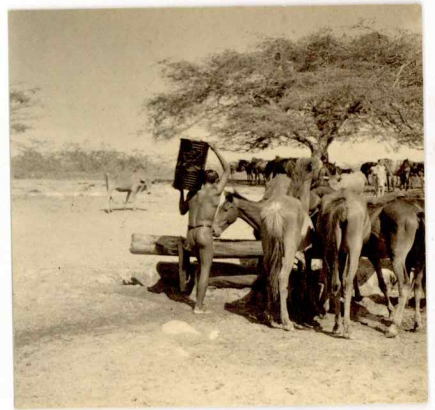
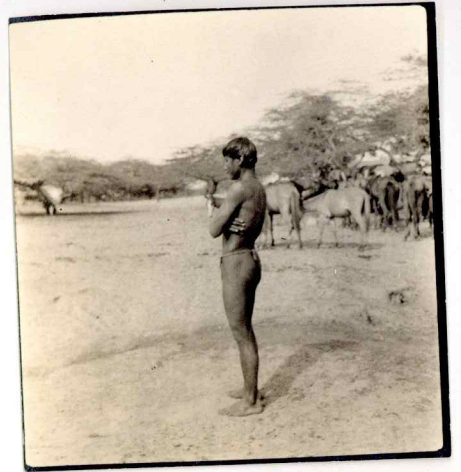
N4-148518



0.
15
N4-148519

8.
N4-148520

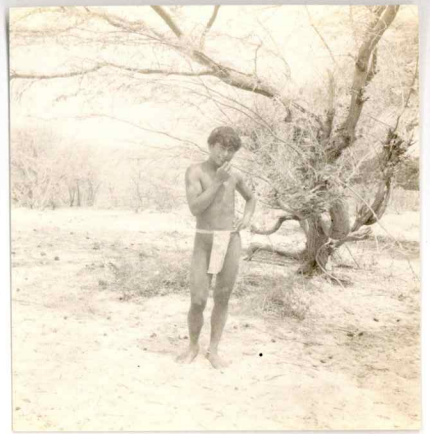
N4-148520



Q.
1511
N4-148521

2.
1511
N4-148522

1512
N4-148524

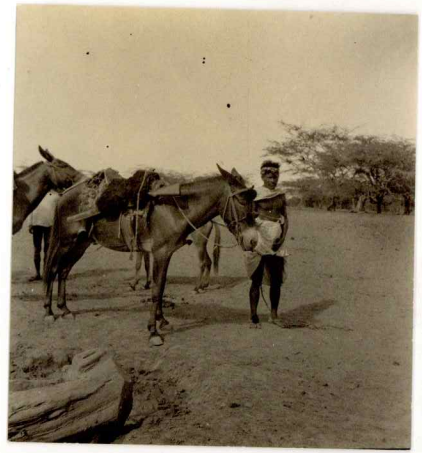


N4-148525

154

N4-148526

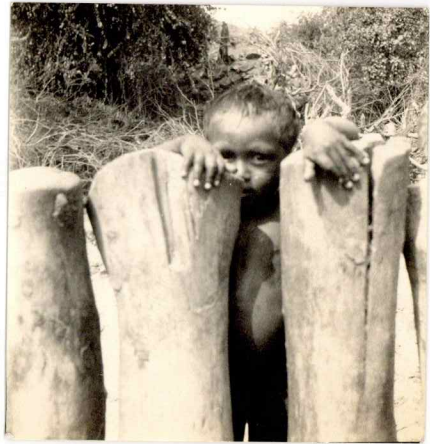
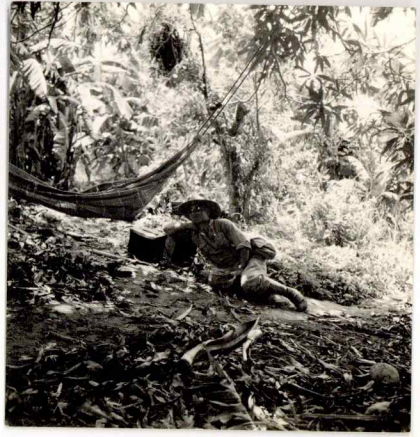
155
N4-148527



N4-148528

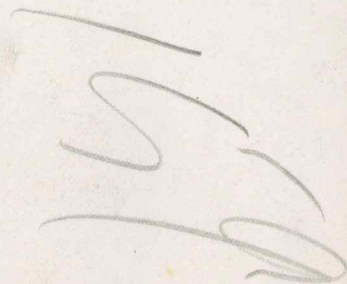
491
N4-148529

490
N4-148530




[FELIPE?]

N4-148531

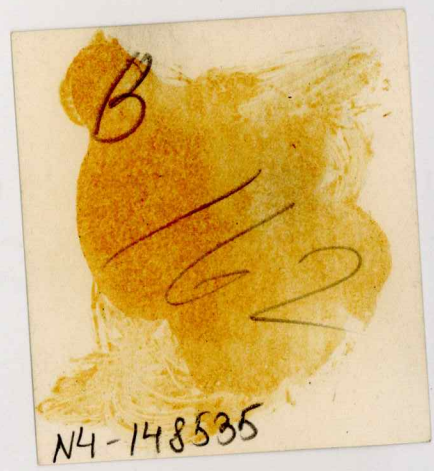
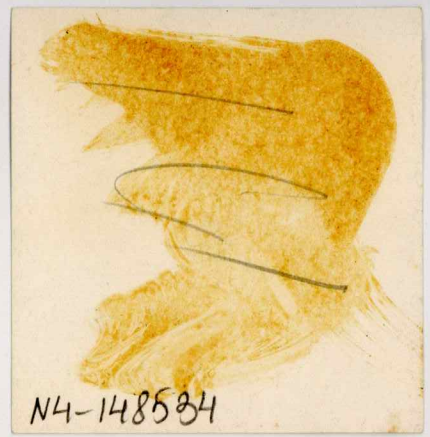


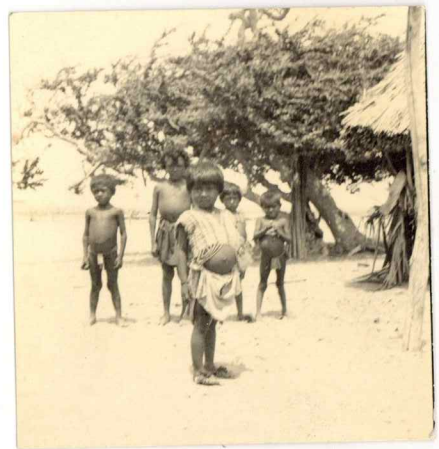
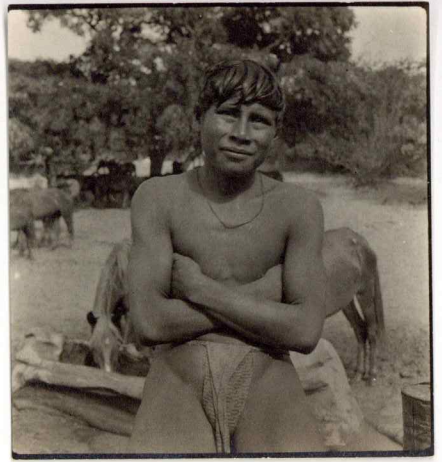
N4-148532



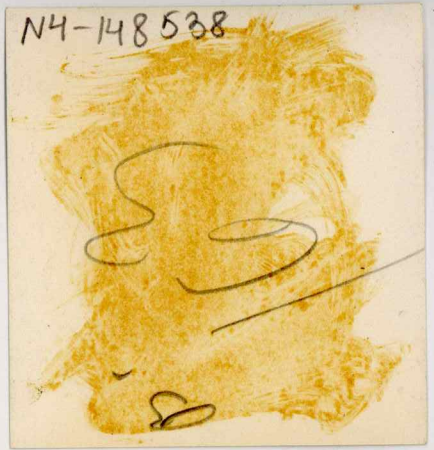
N4-148533



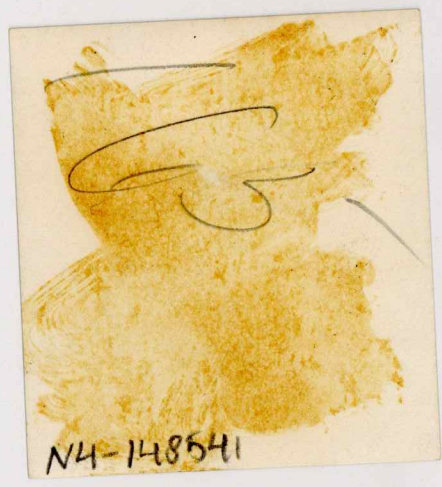
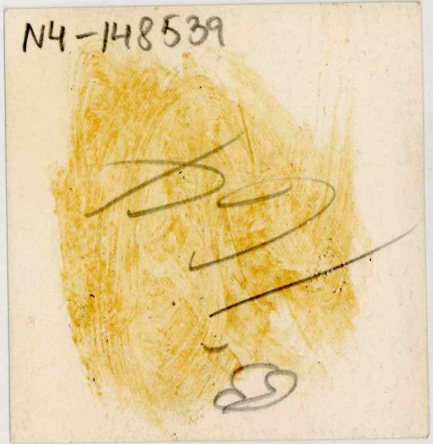




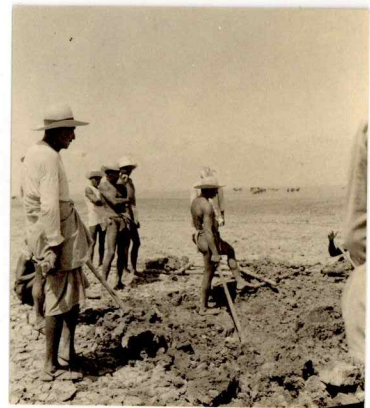
N4-148538

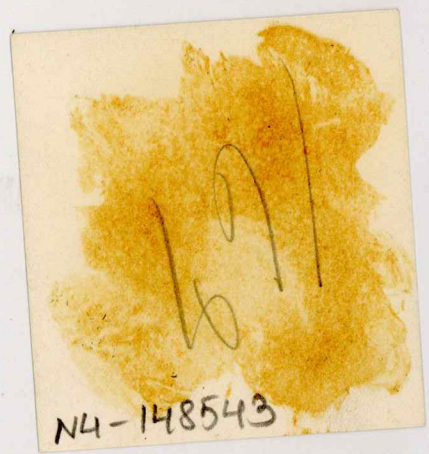
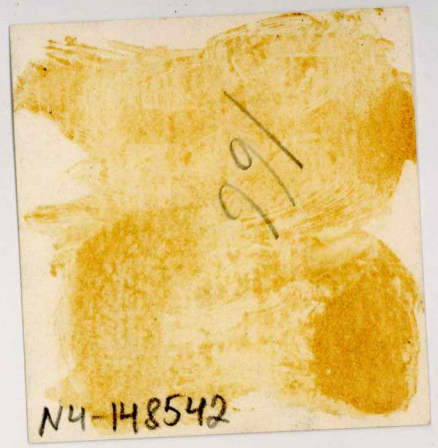


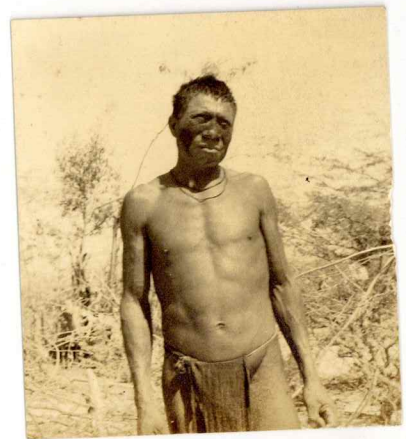
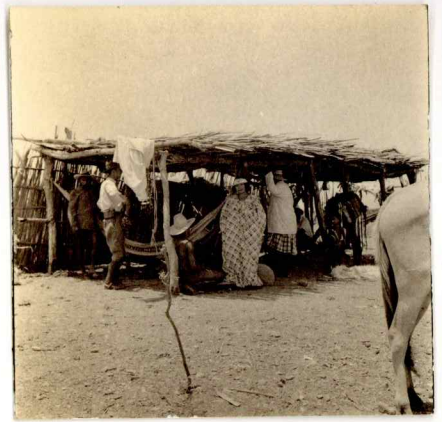
N4-148539

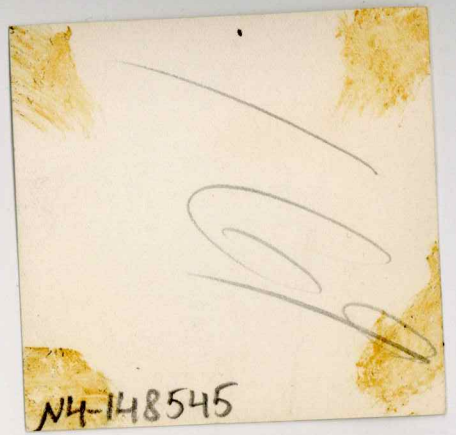


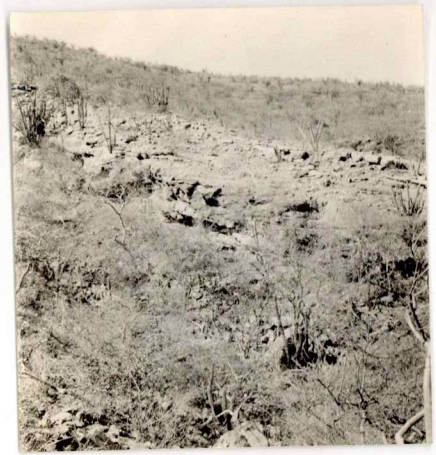
N4-148541









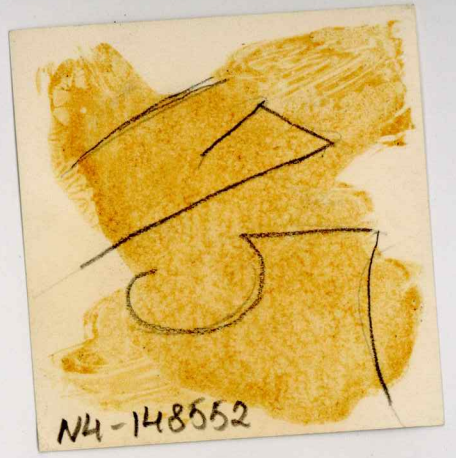


N4-148548

N4-148549

N4-148550

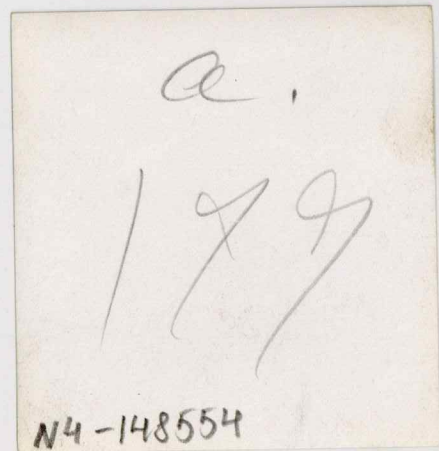




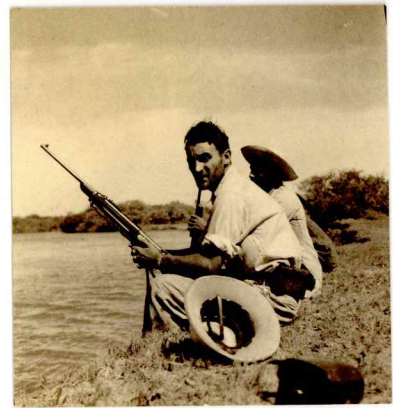
N4-148552

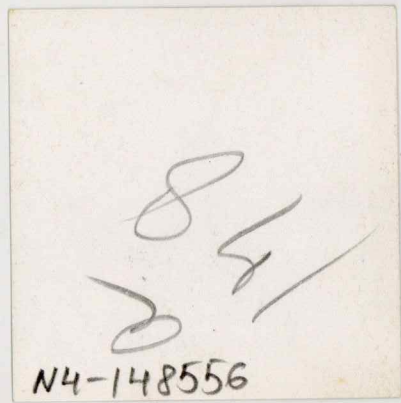


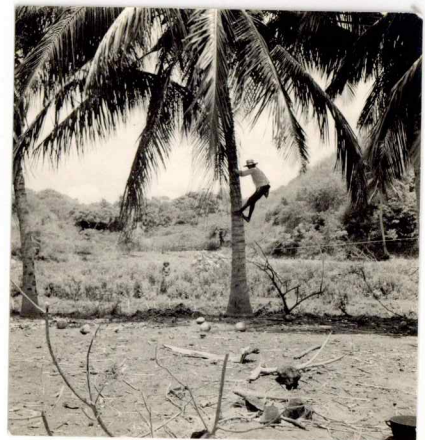
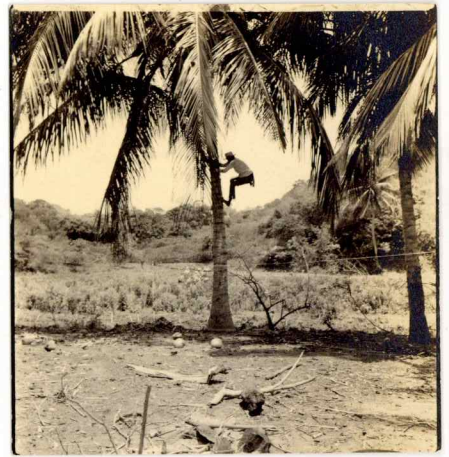
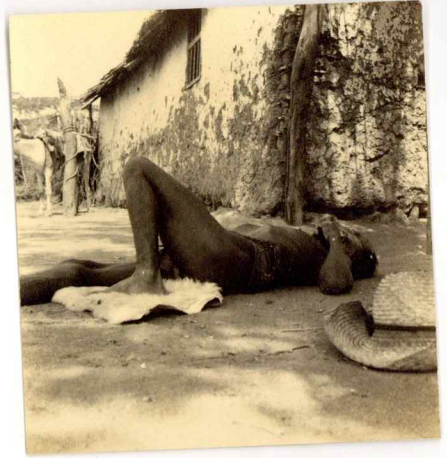
N4-148553

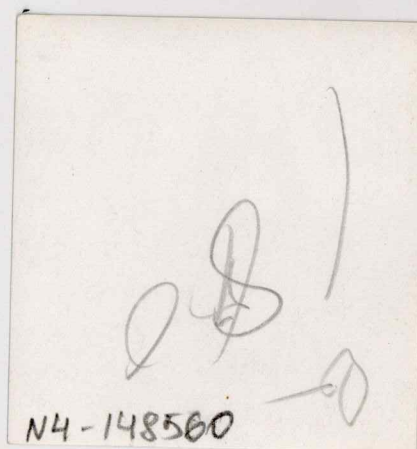
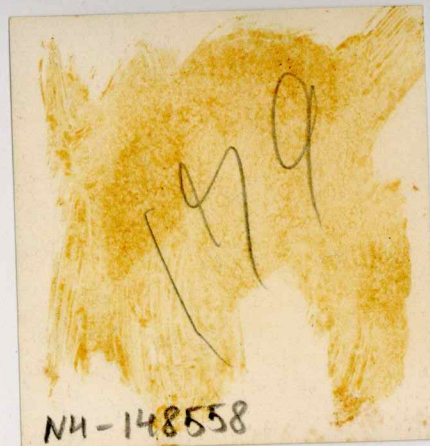


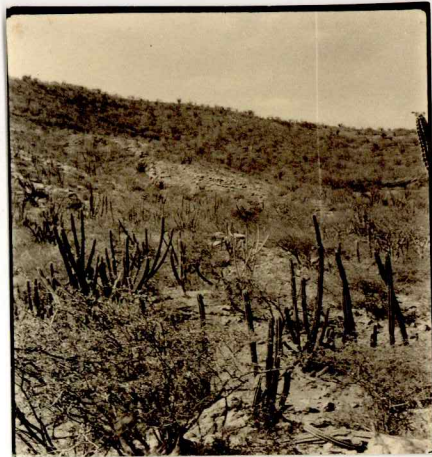
N4-148554





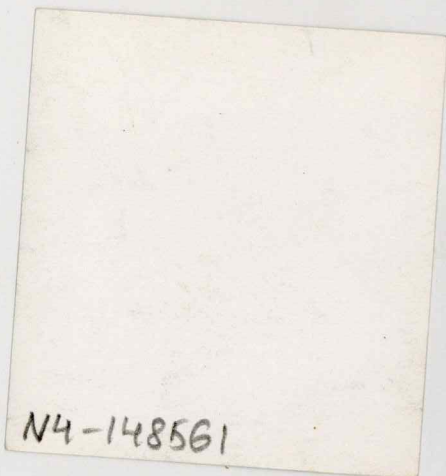








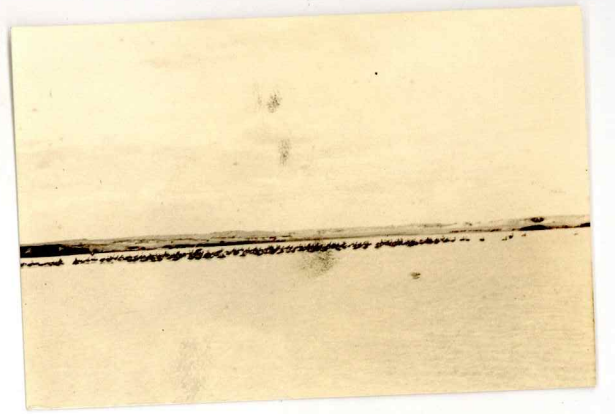
N4-148561



N4-148561



N4-148563





185

N4-148564