



N4-148497

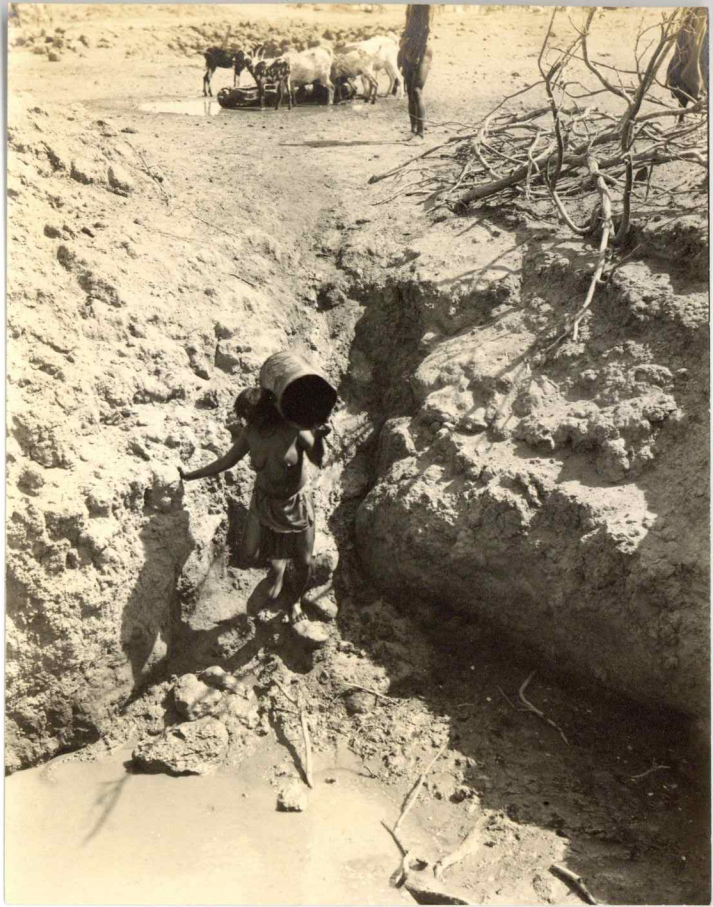
N4-148497

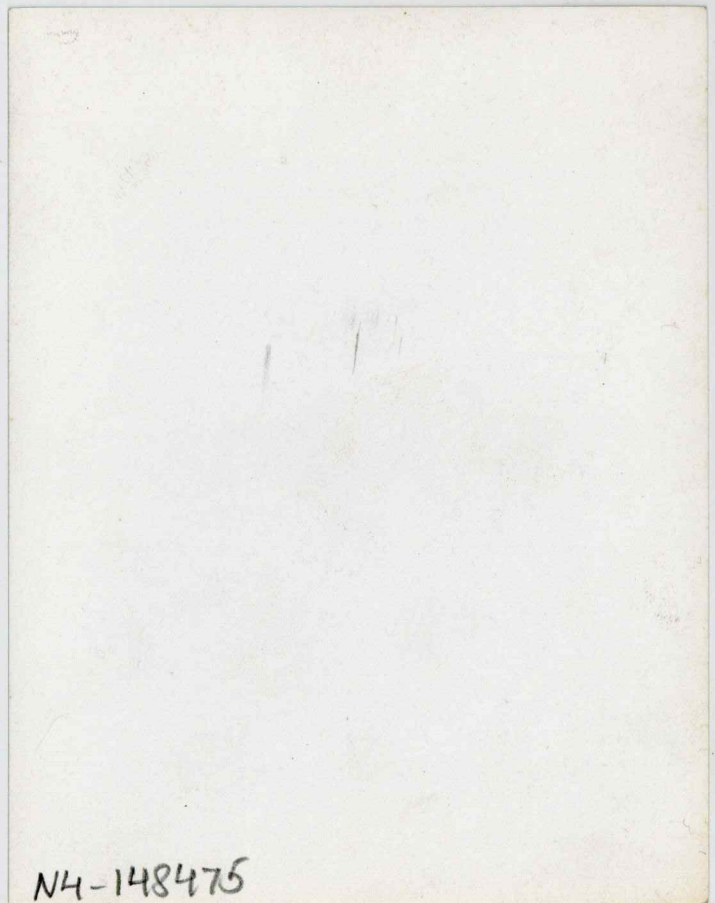
117-126

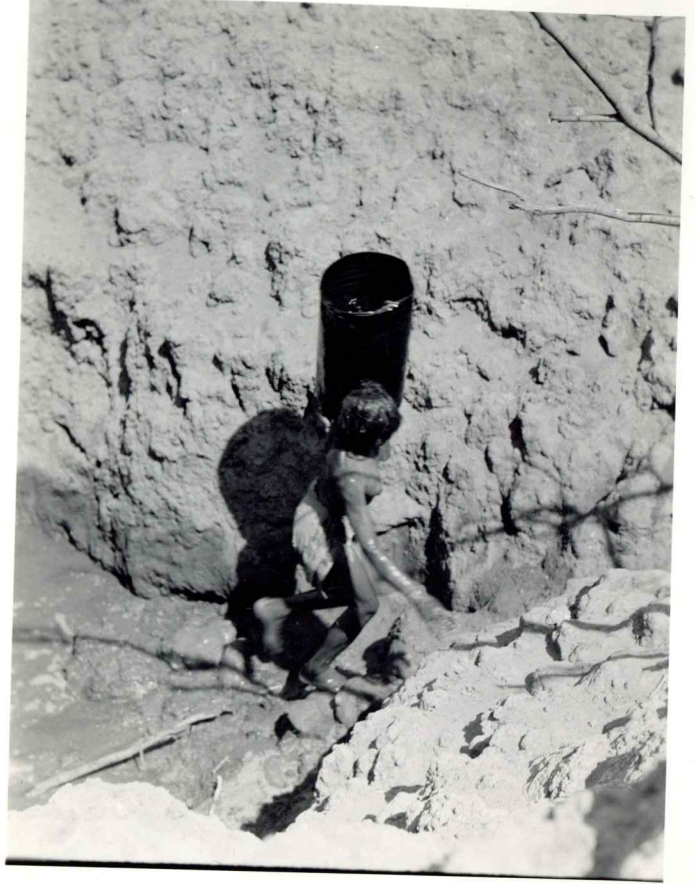
TRANS. 65

TAMS FOR CALIFORNIA

CALIFORNIA







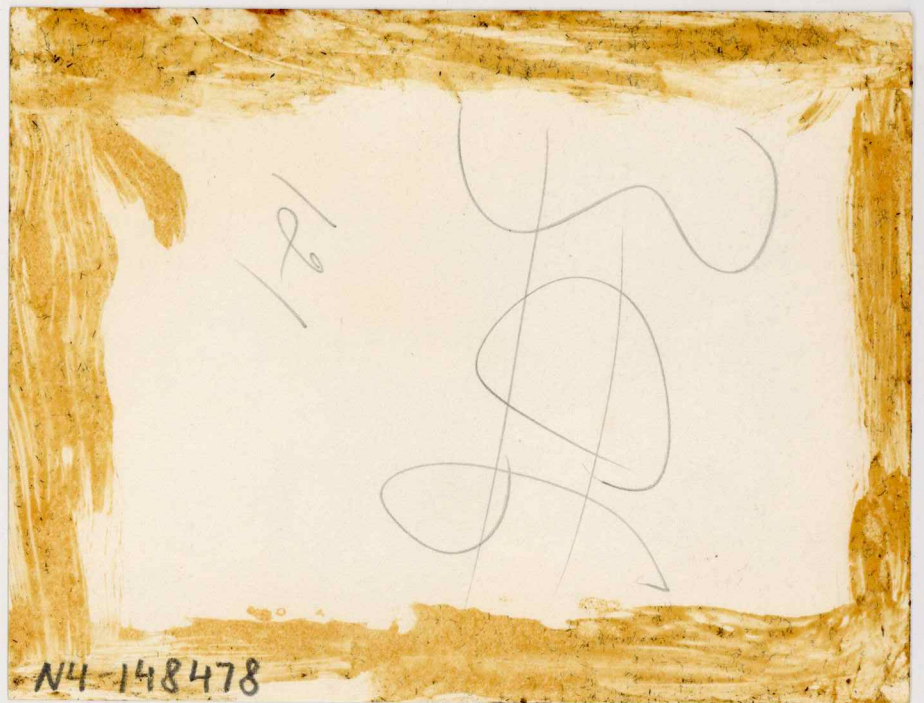
320
50
7

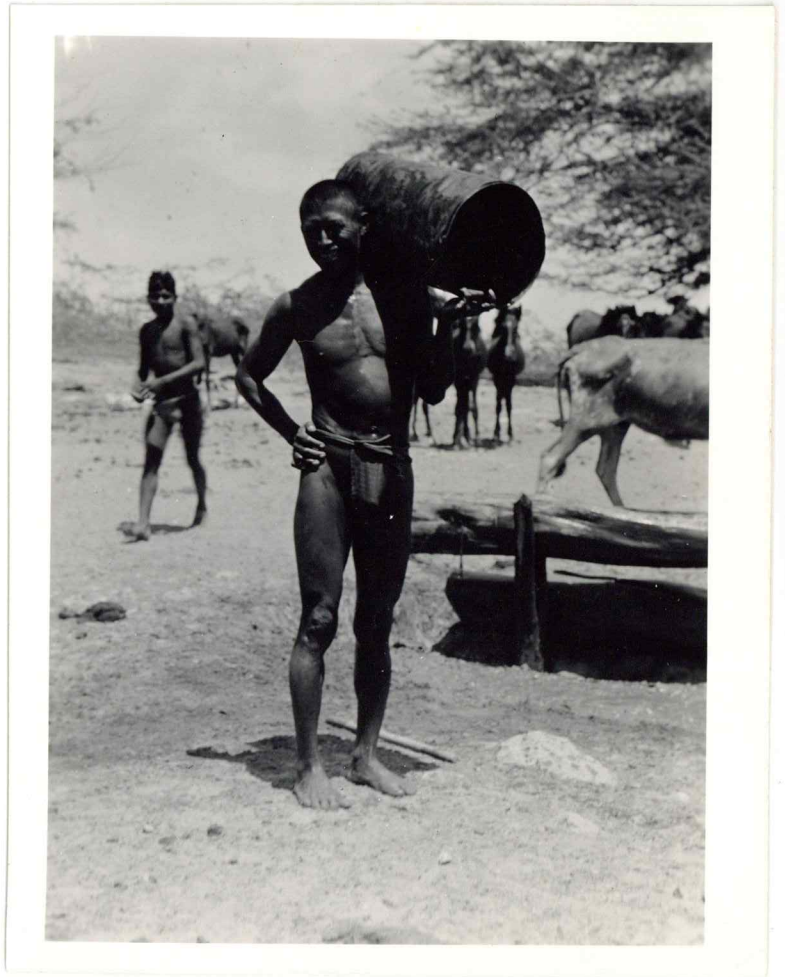
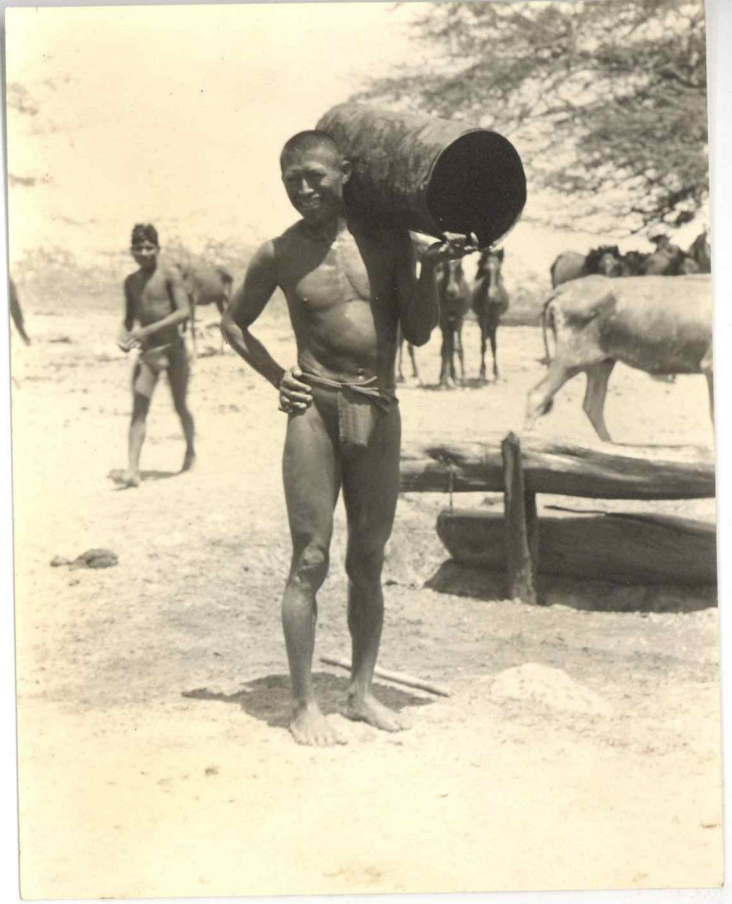
NH-148476



NH-148476







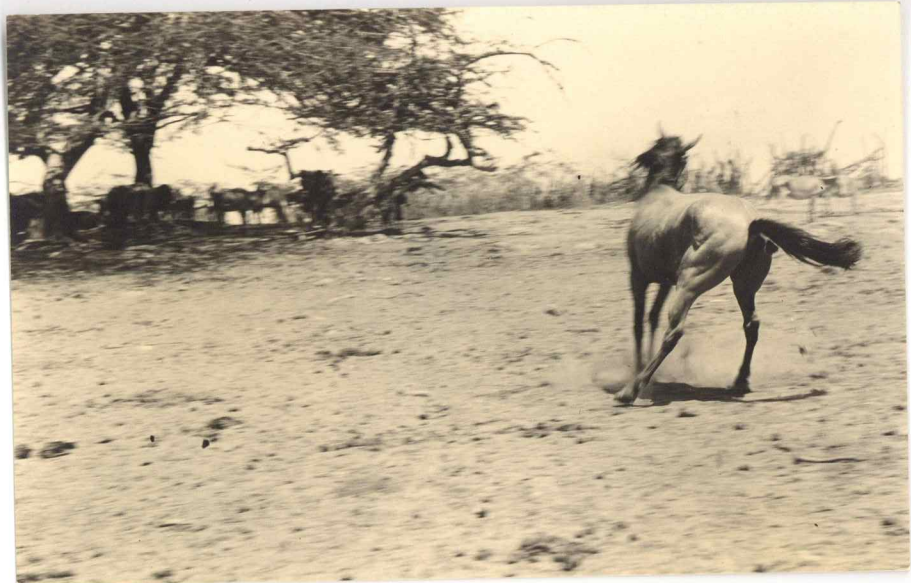


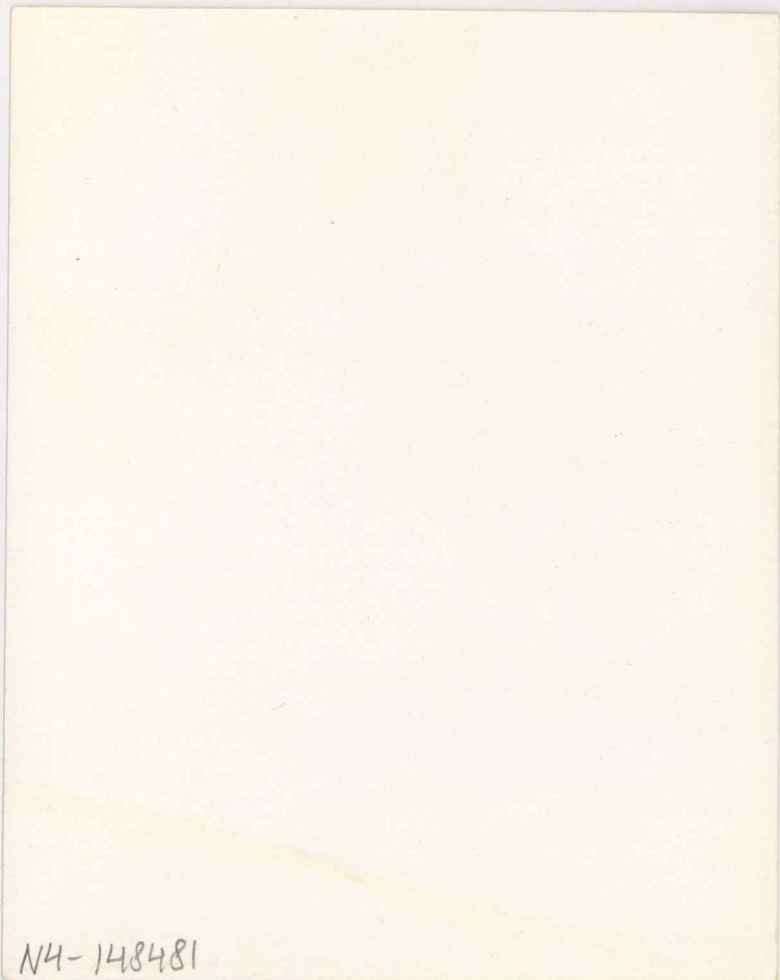
PP

5-22

[Guajira]

N4-148479







1268

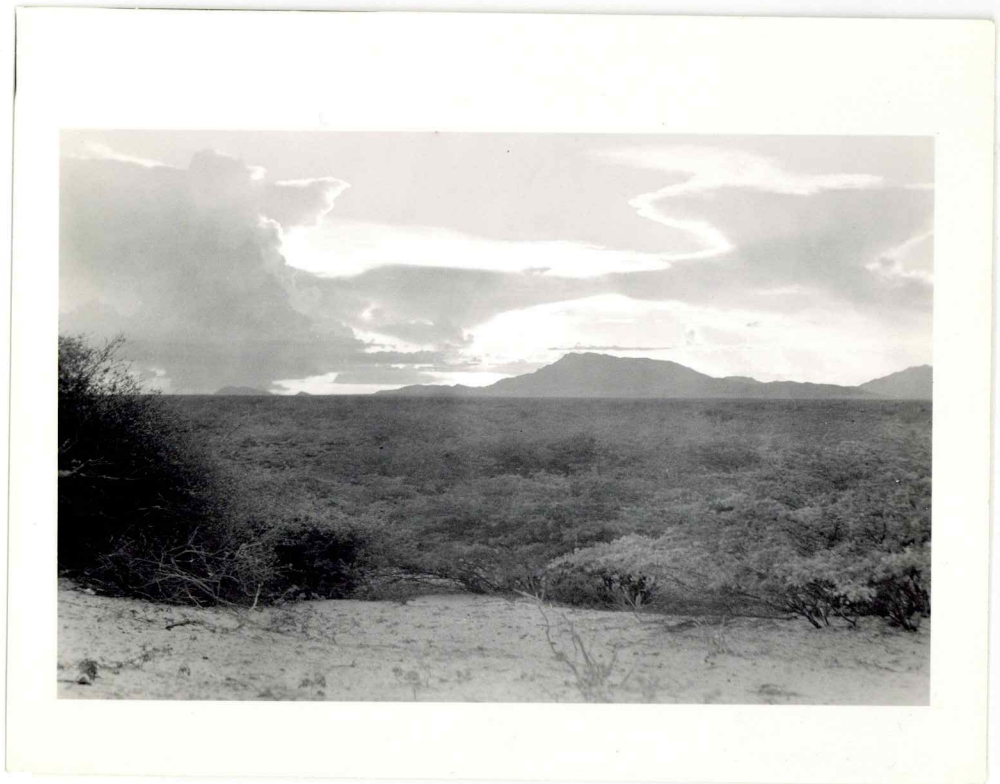
309

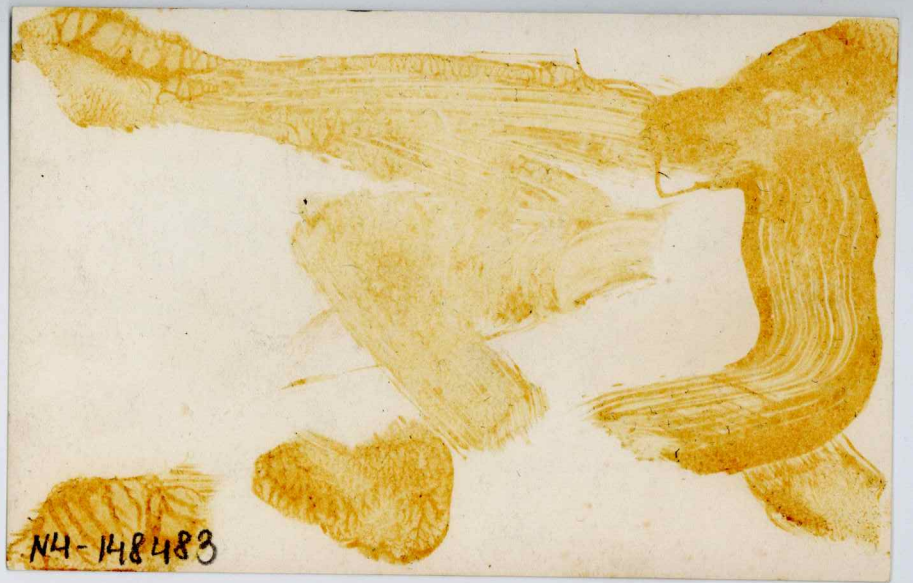
N4-148482

1268

309

N4-148482







126 a

24

300

NH-148484

126 a

300



126 P

300

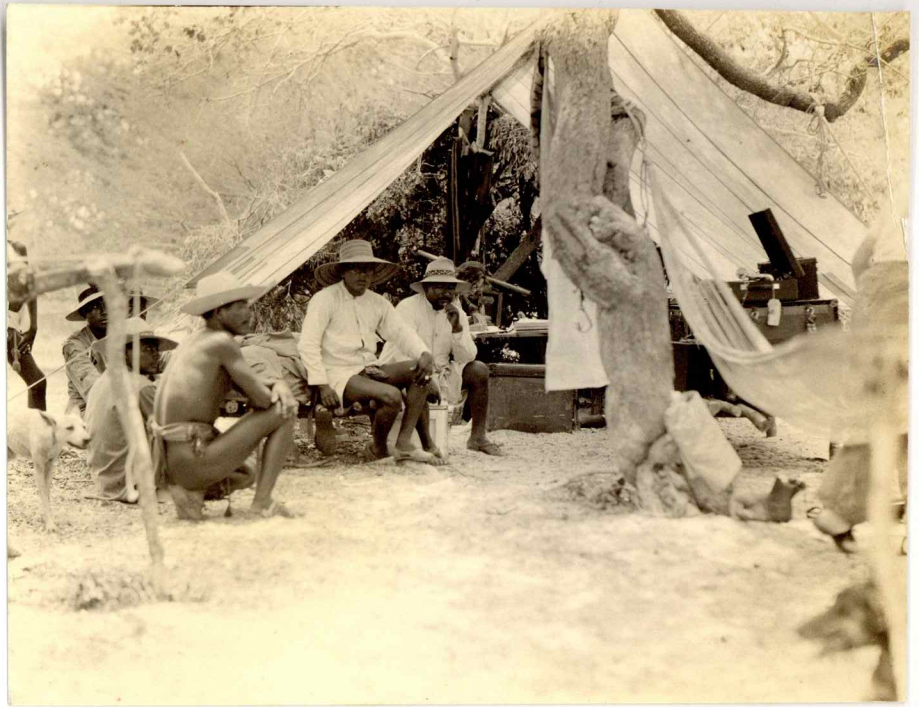
(3)

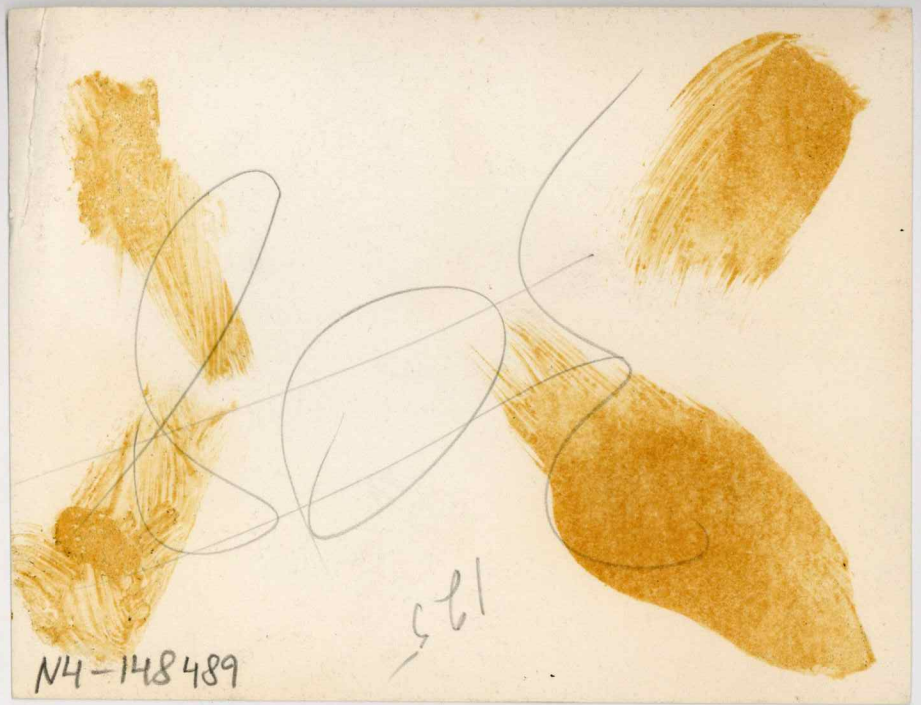
N4-148485

126 i

300







N4-148489

521



N4-148495





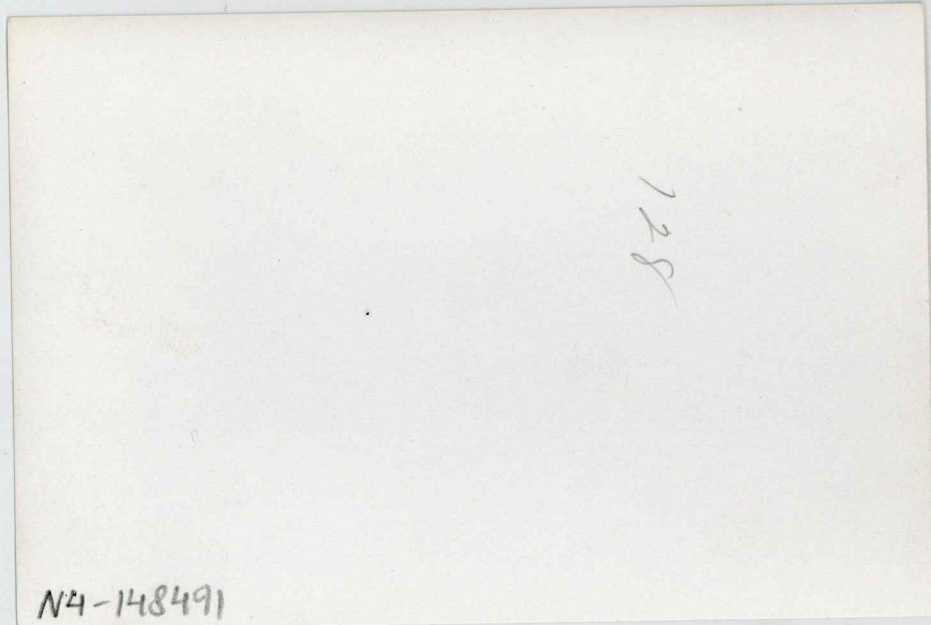
127-139

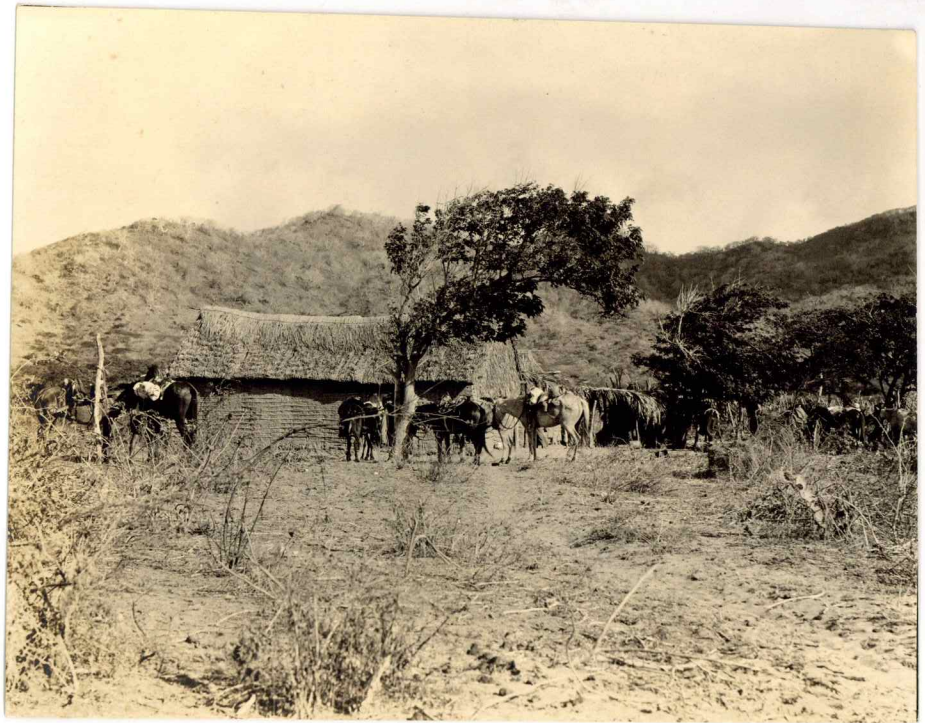
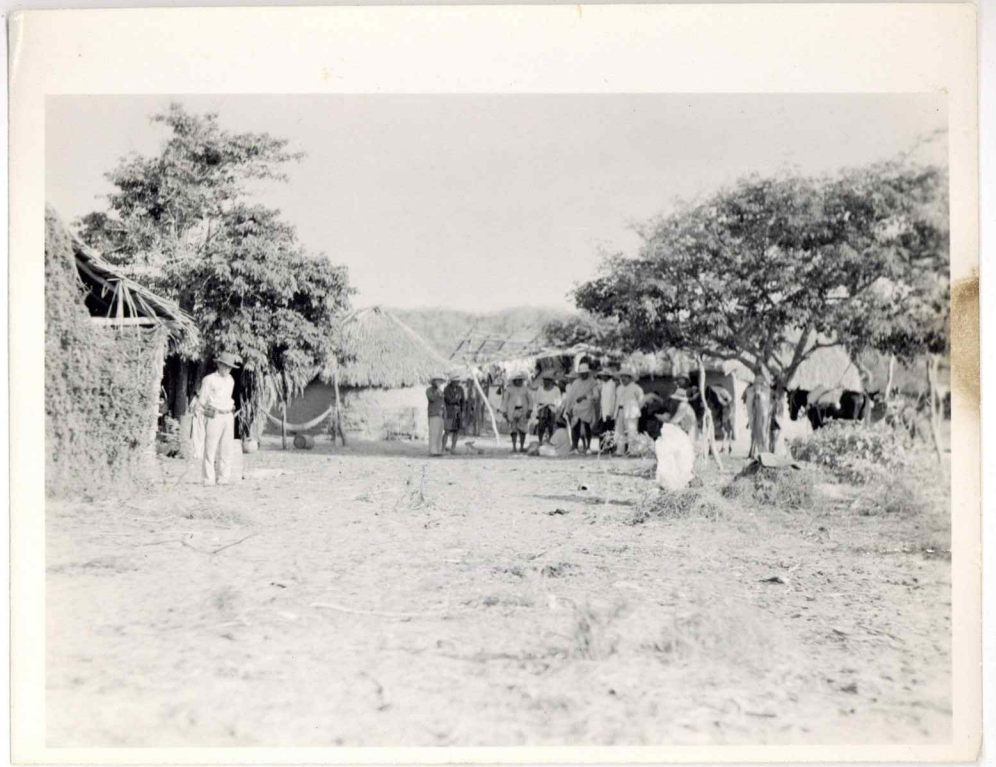


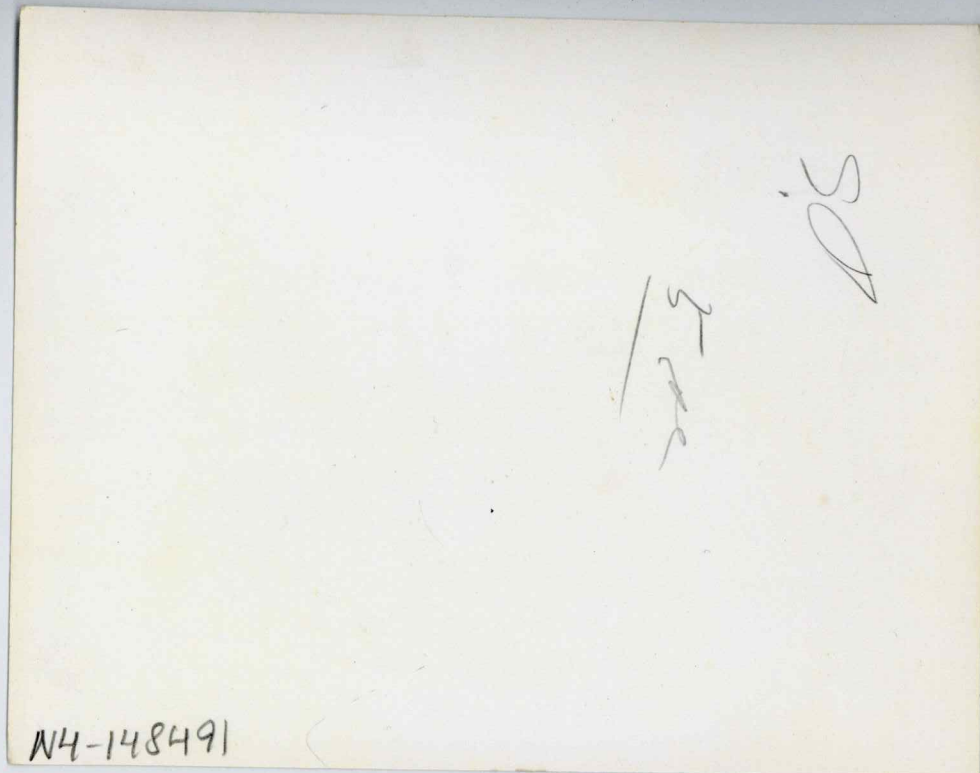
1269 2
2006

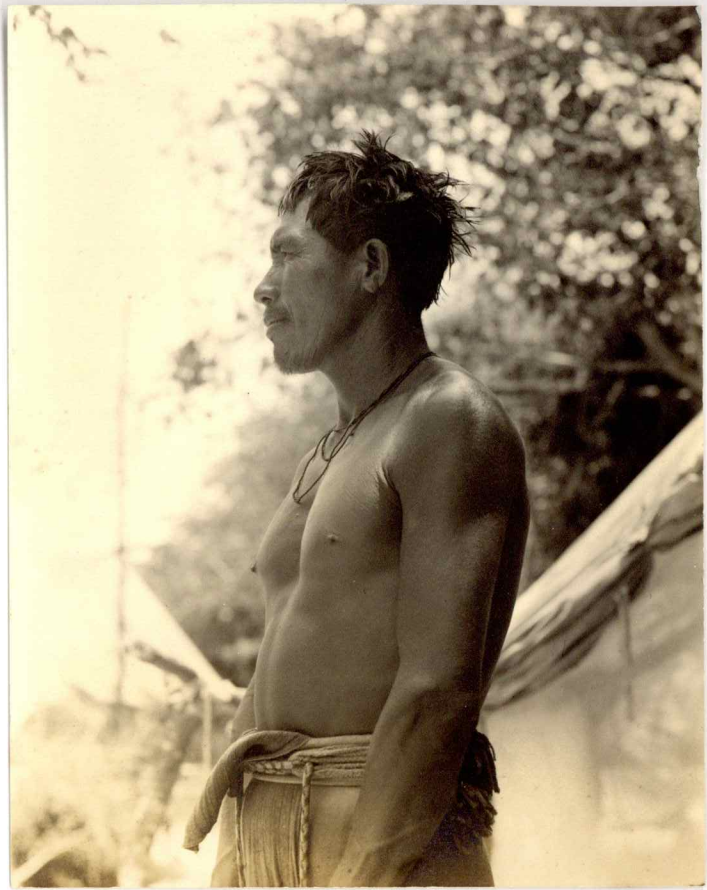
127
2006
see N4-148490

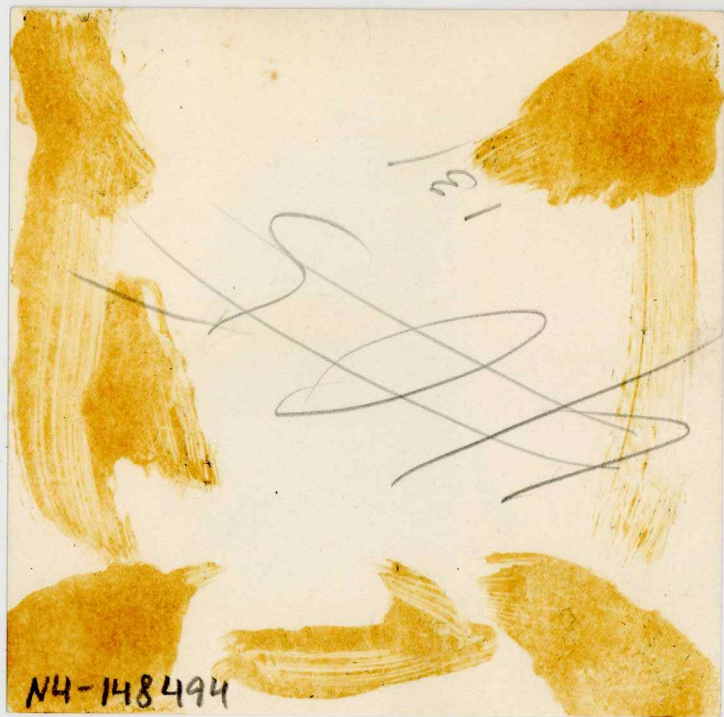




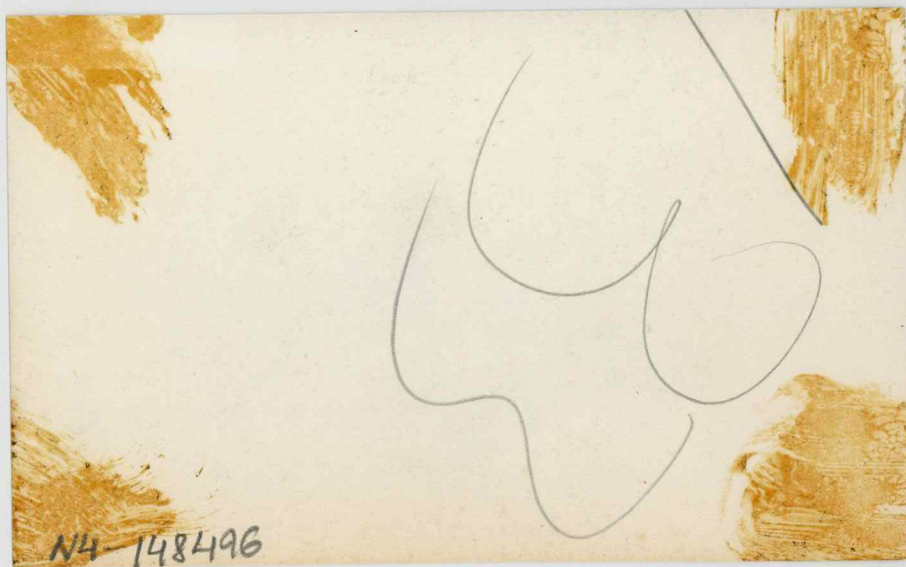
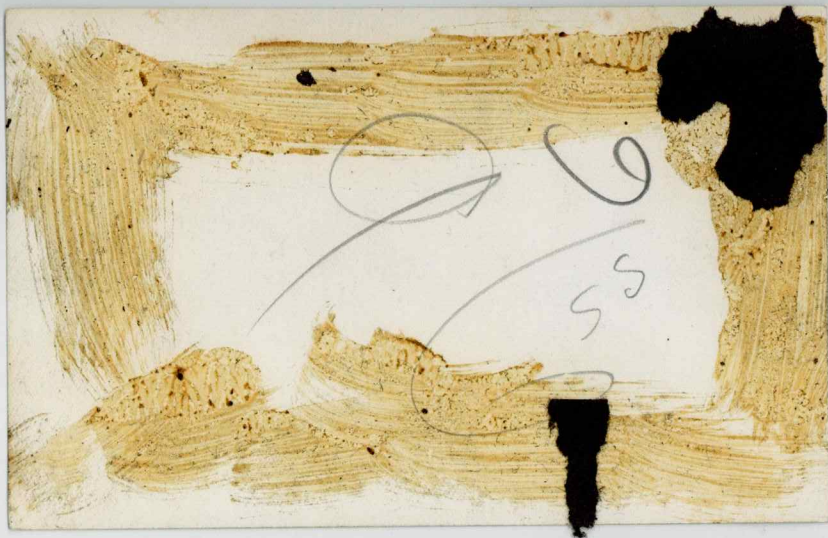












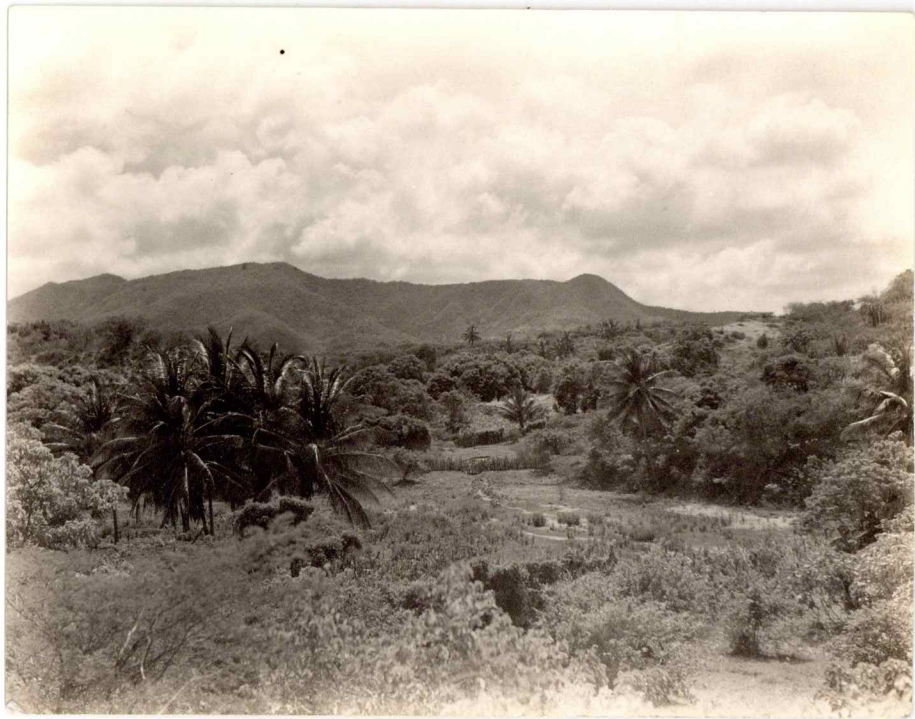
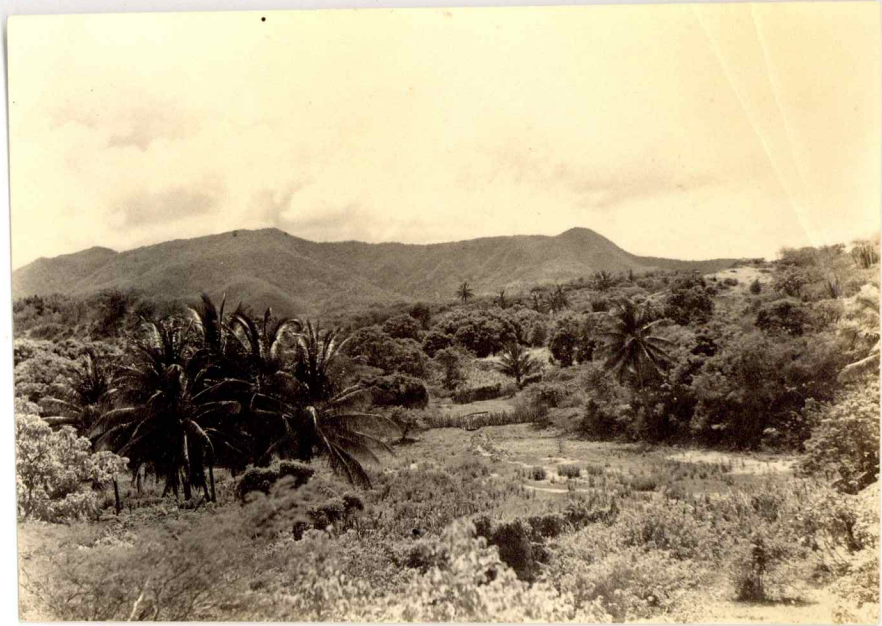


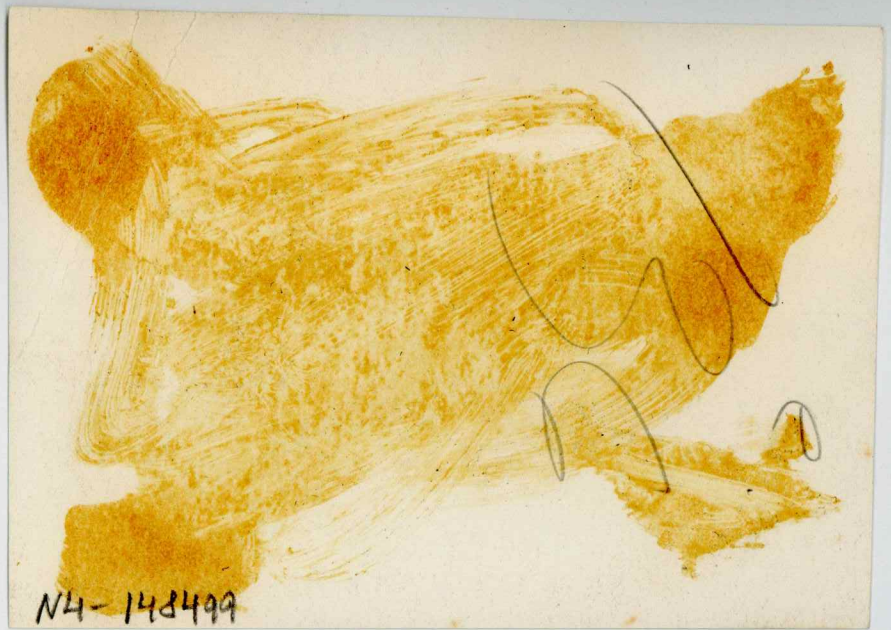
[Guajira: Sorcuess protecting sheep]

NH-148496

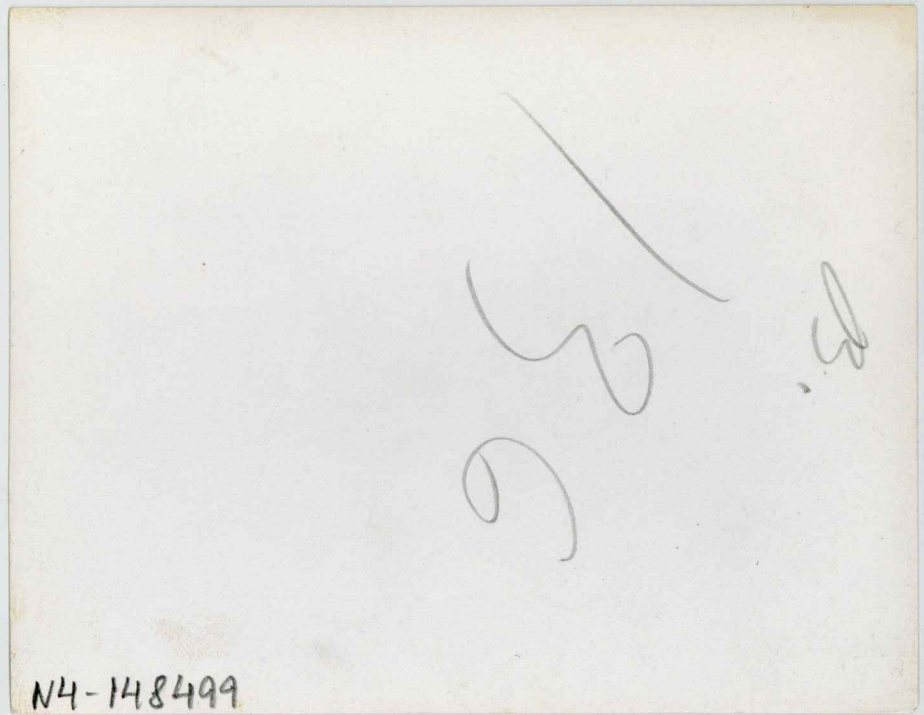
exp. fruit

NH-148498





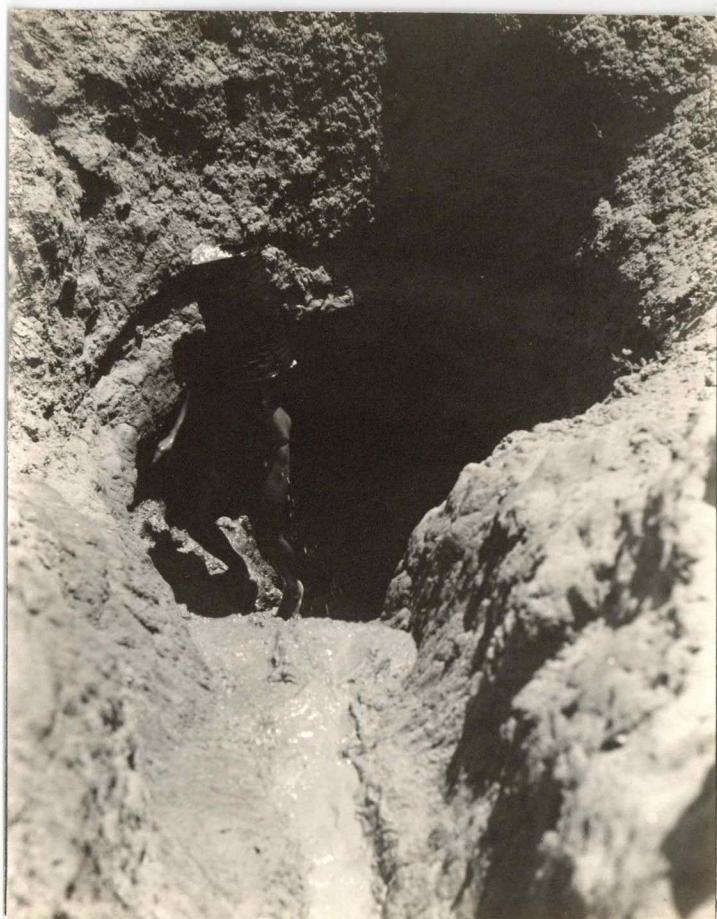
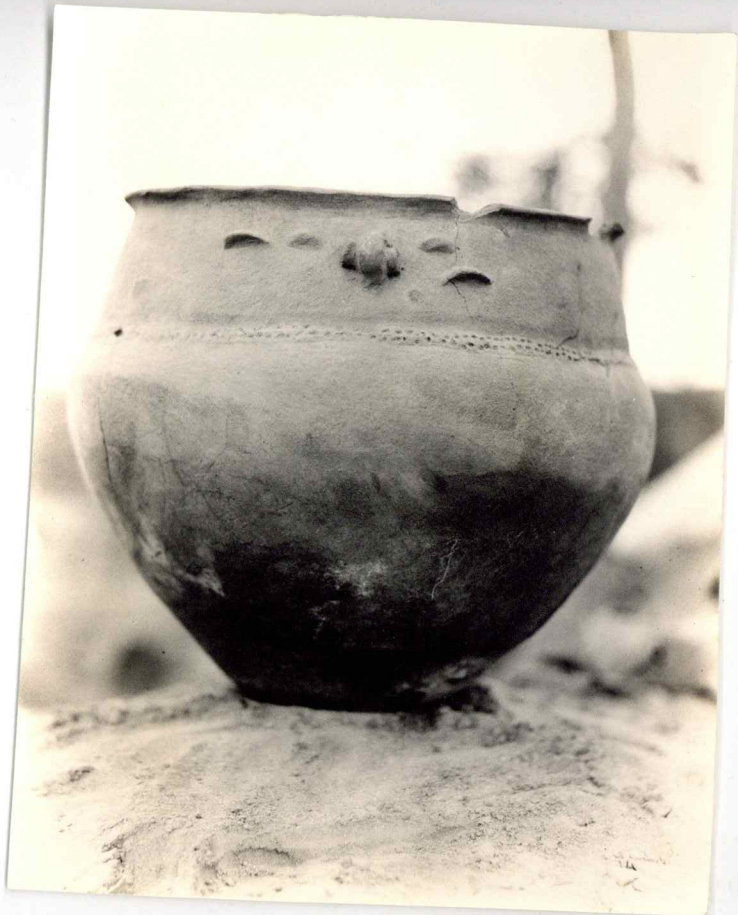
N4-148499



N4-148499







exp. hms

N4-148502

129

N4-148503