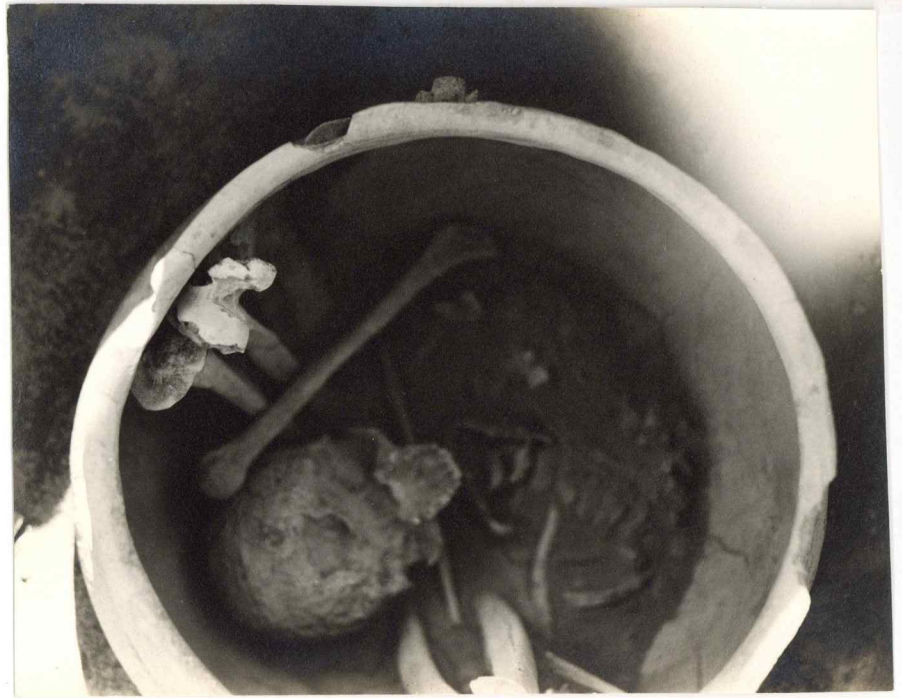


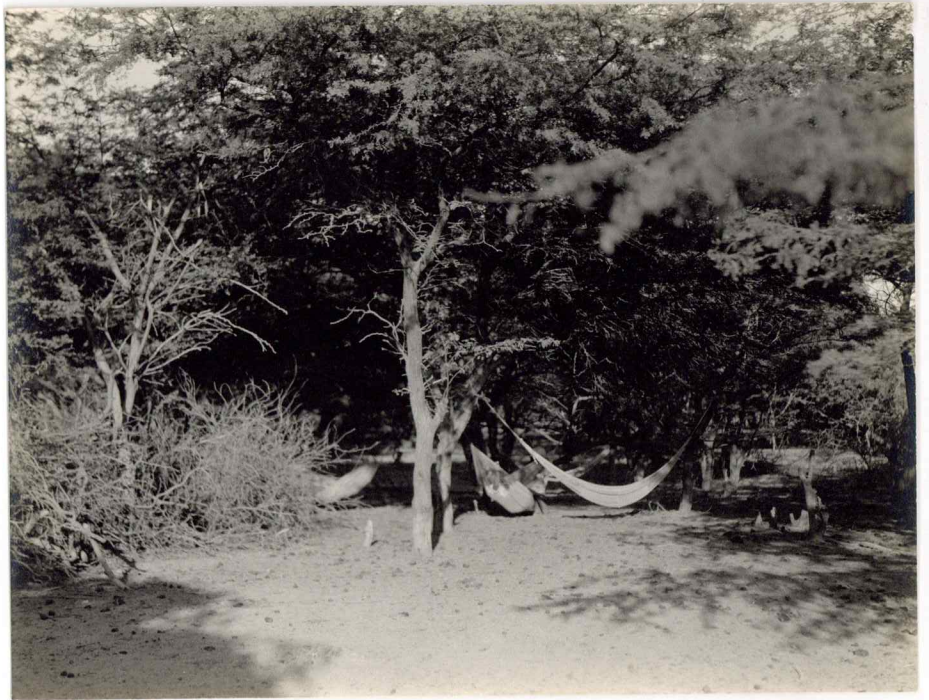
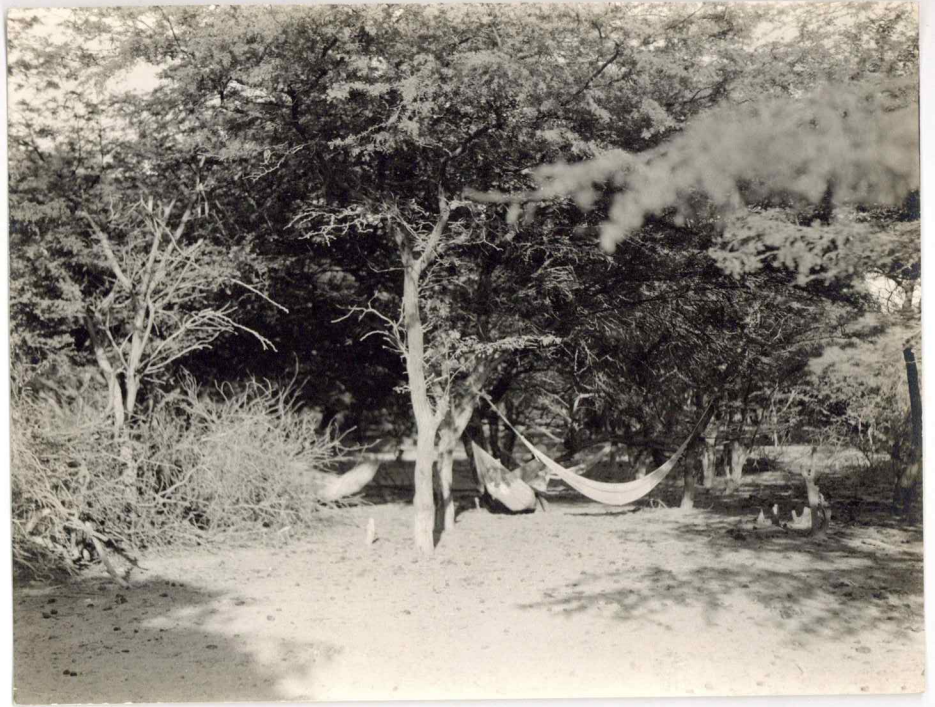
N4-148393 - N4-148415

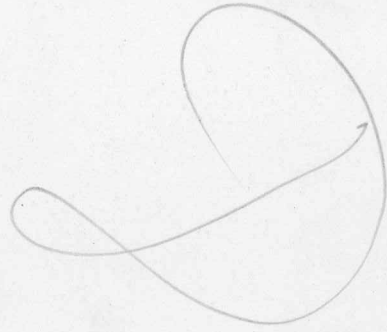


N4-148393

*exp. print*

N4-148394

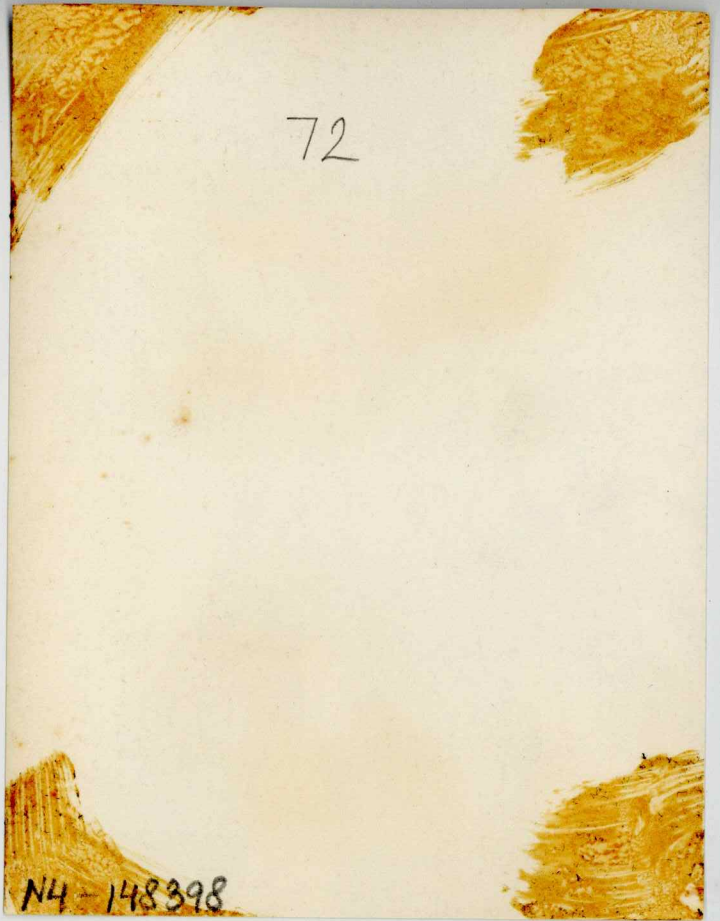


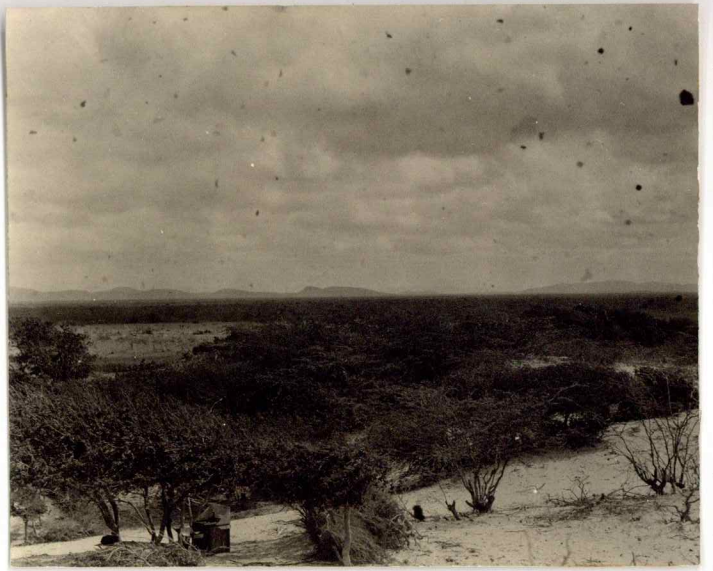


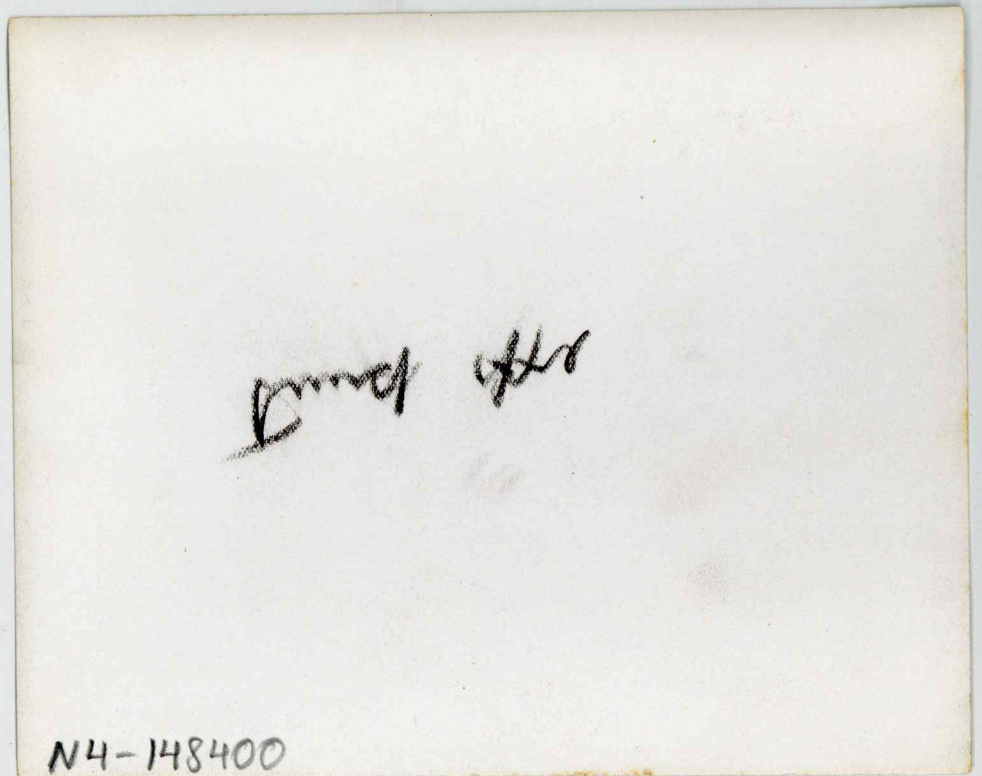
N4-148397

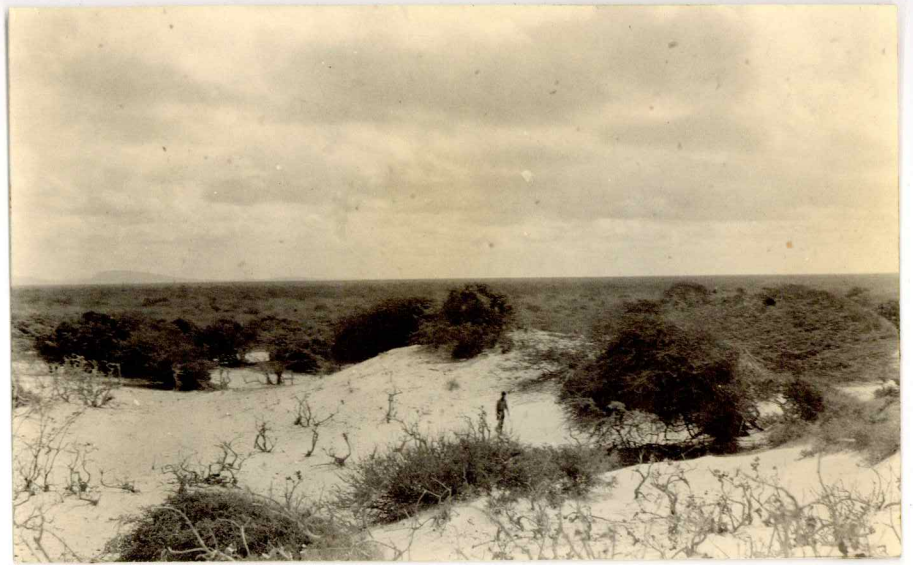
N4-148397

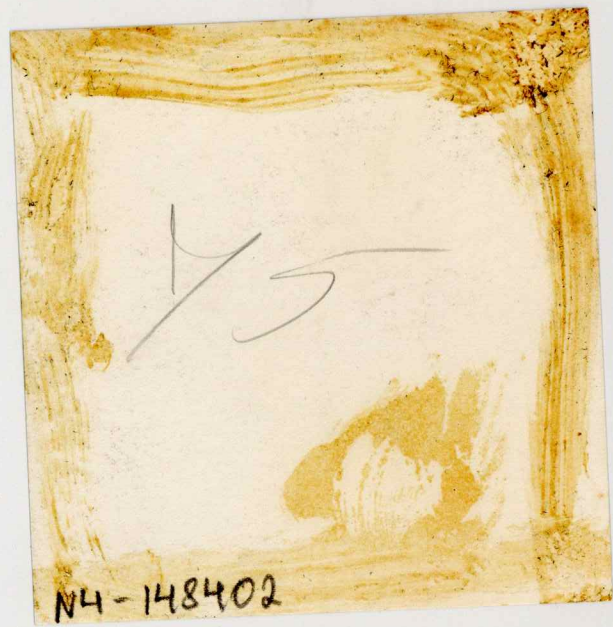










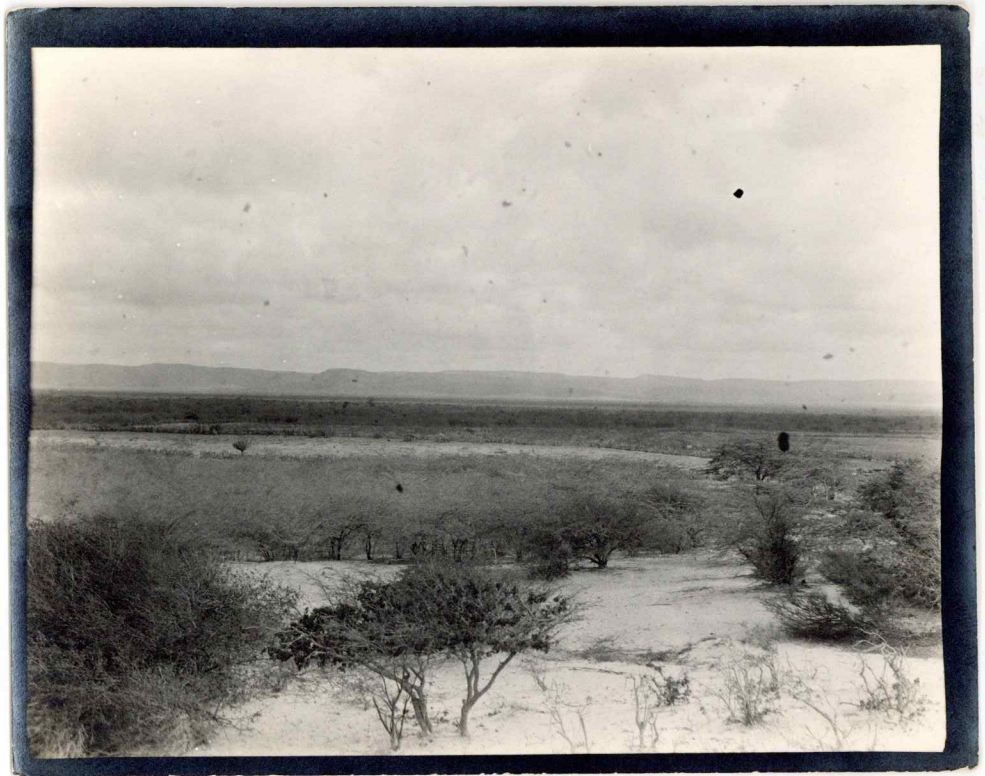




Dr. J. J. J.

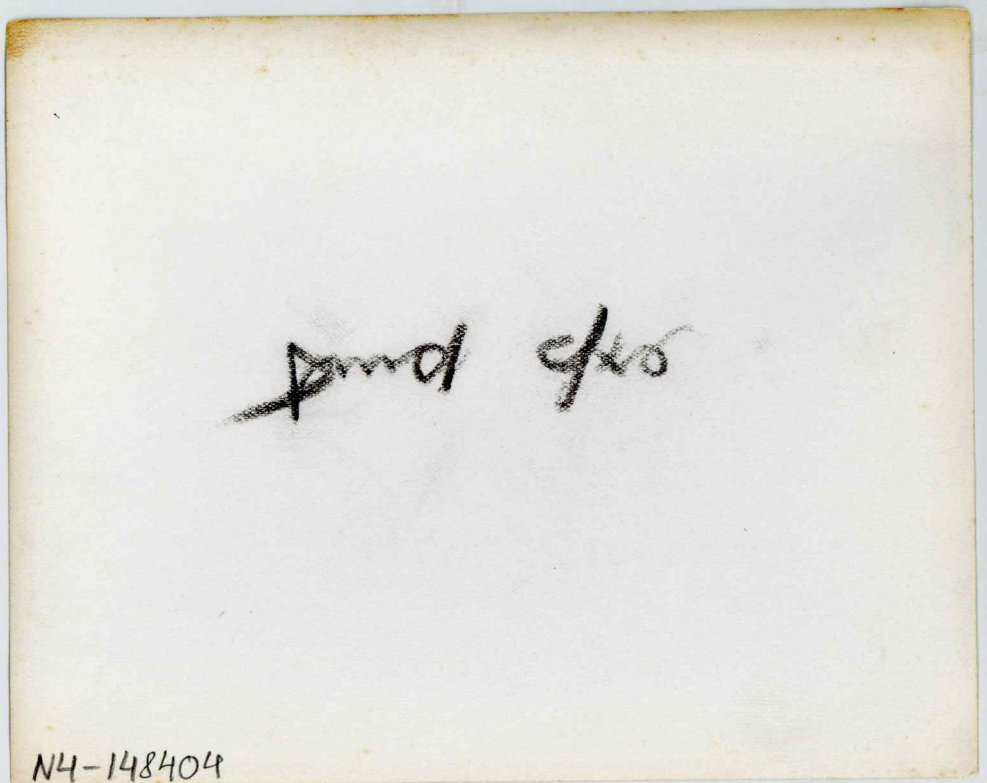
N4-148402

N4-148403



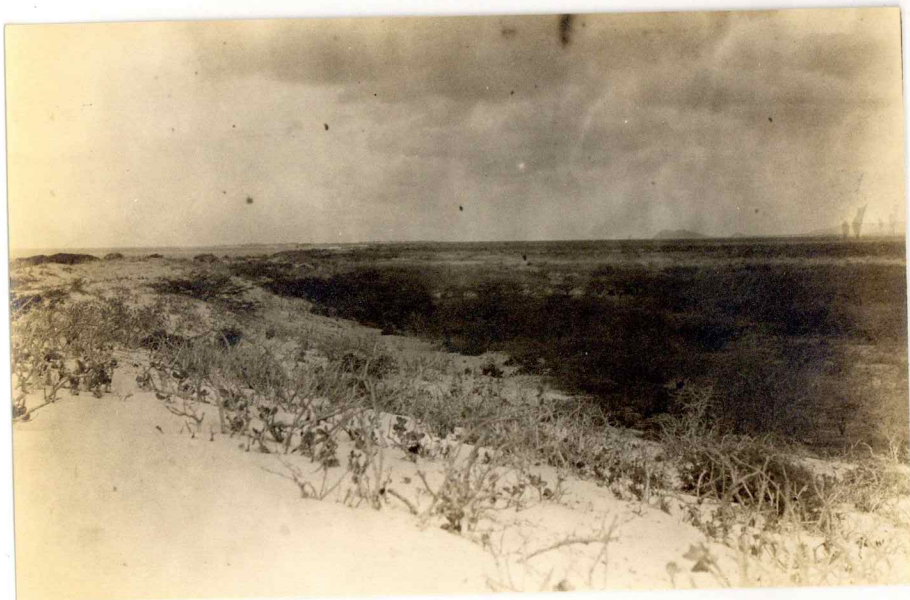
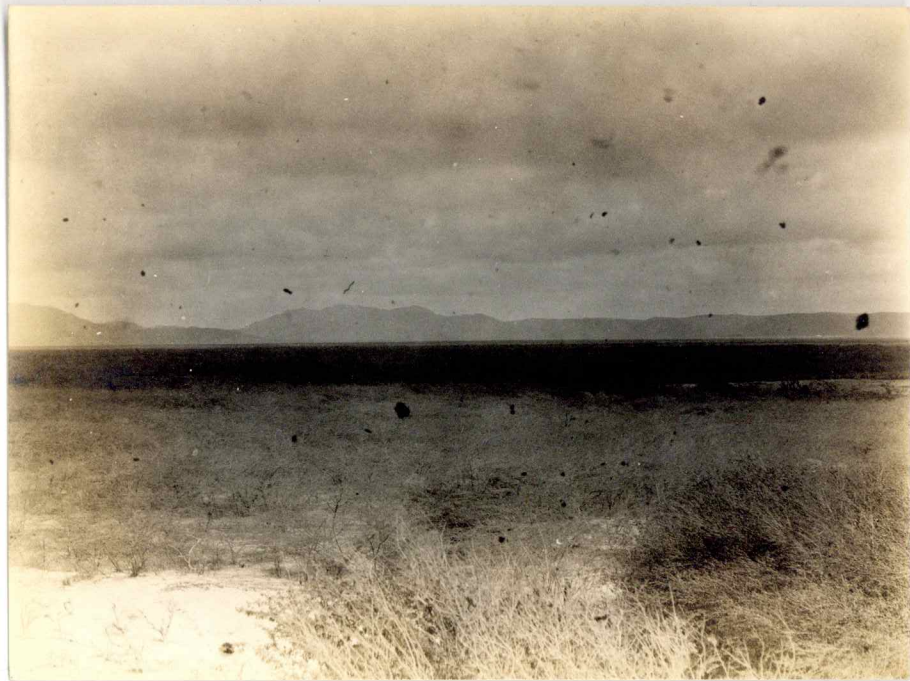


N4-148403



and also

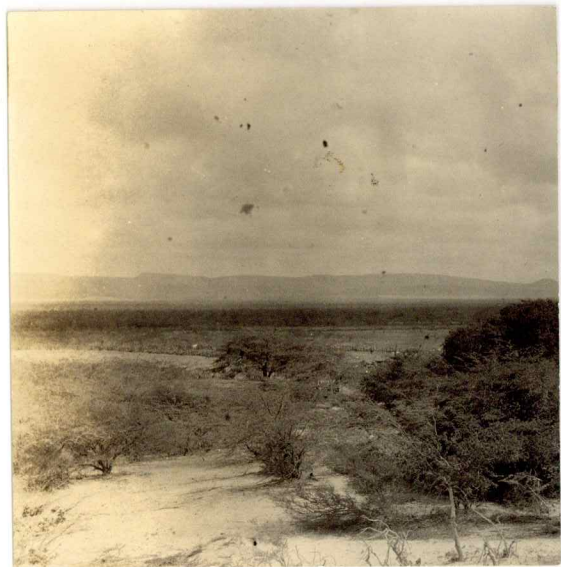
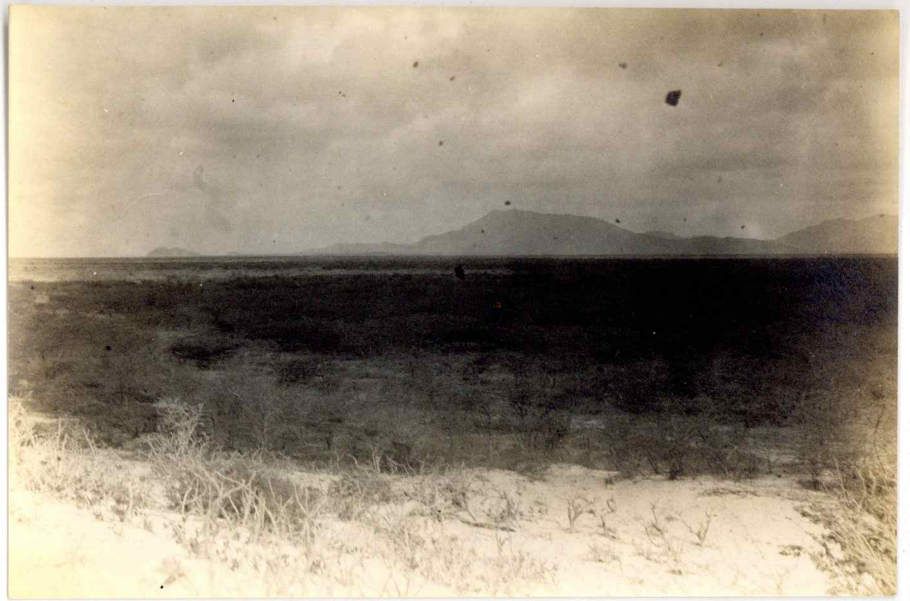
N4-148404



N4-148405

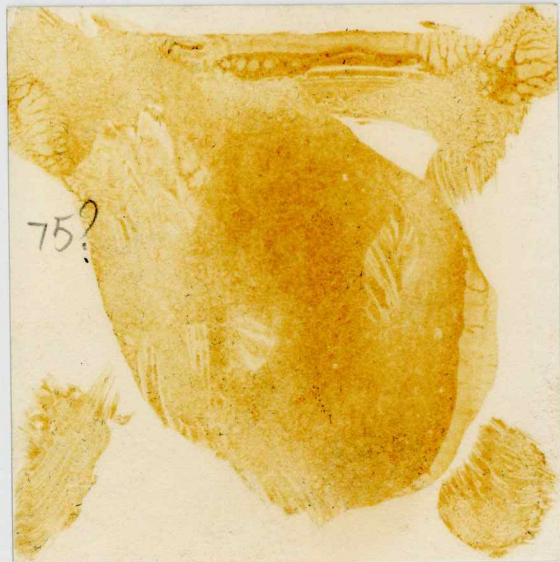
75a

N4-148407

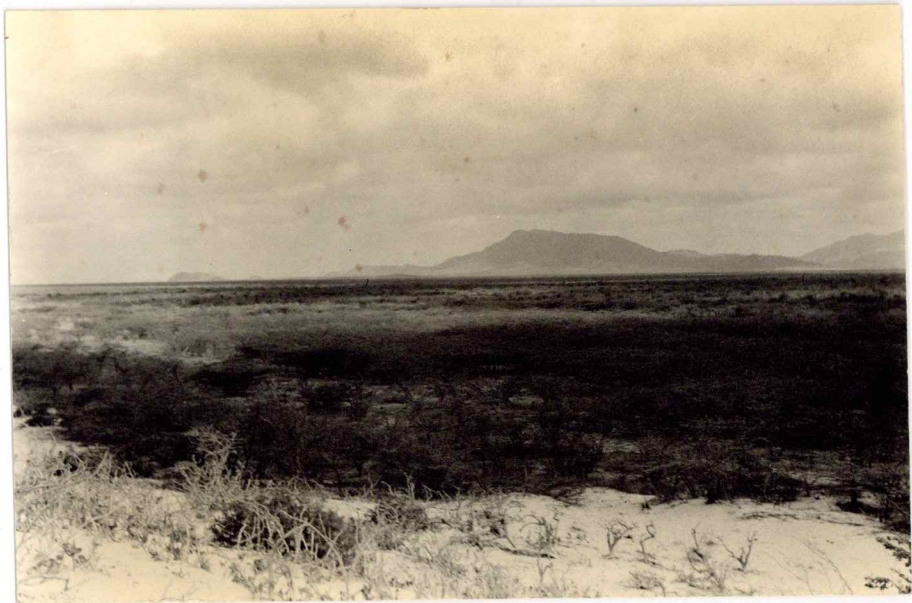
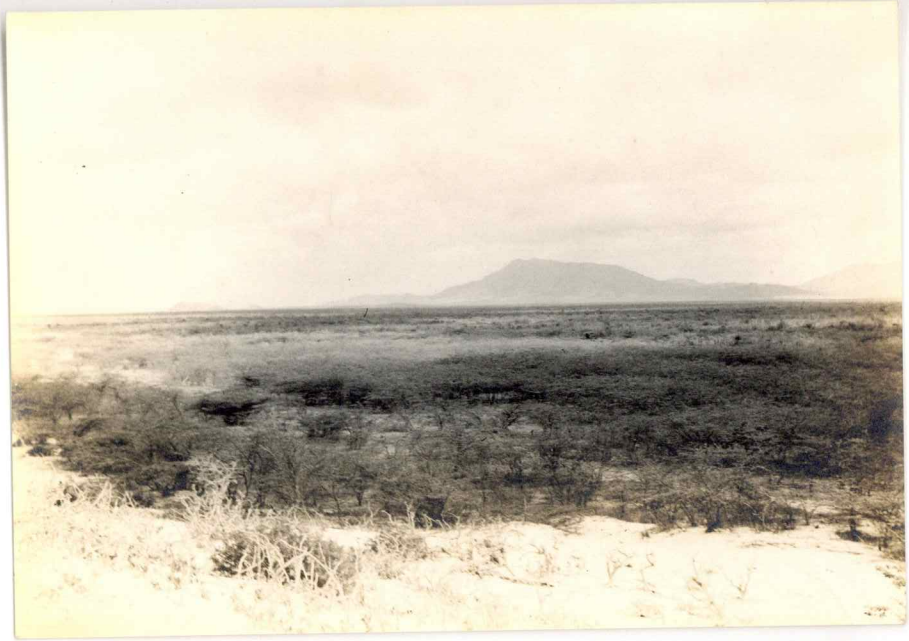




N4-148408



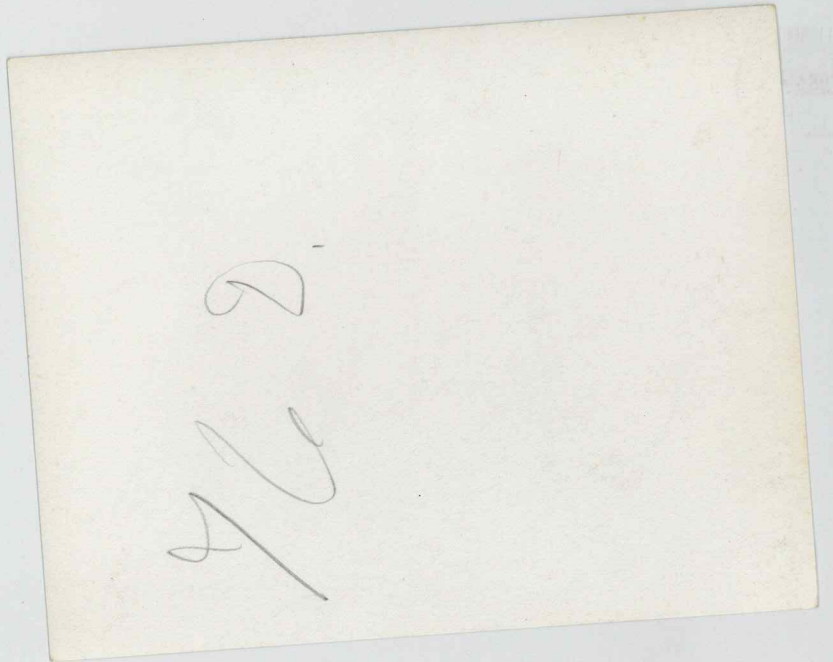
75?

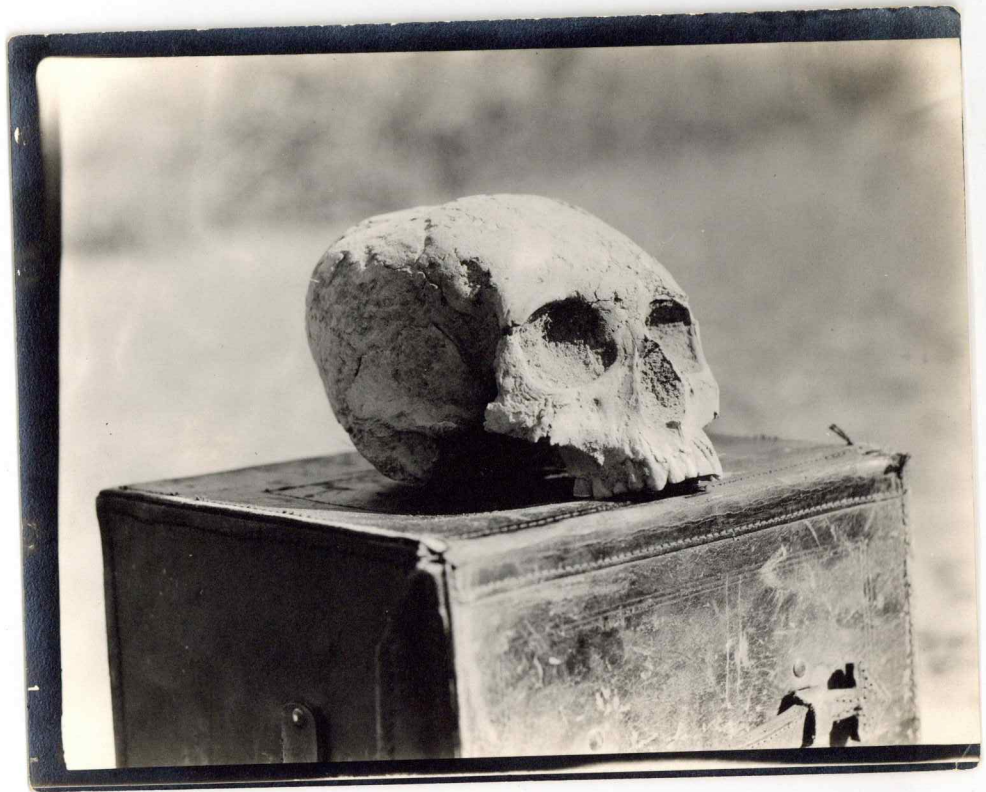
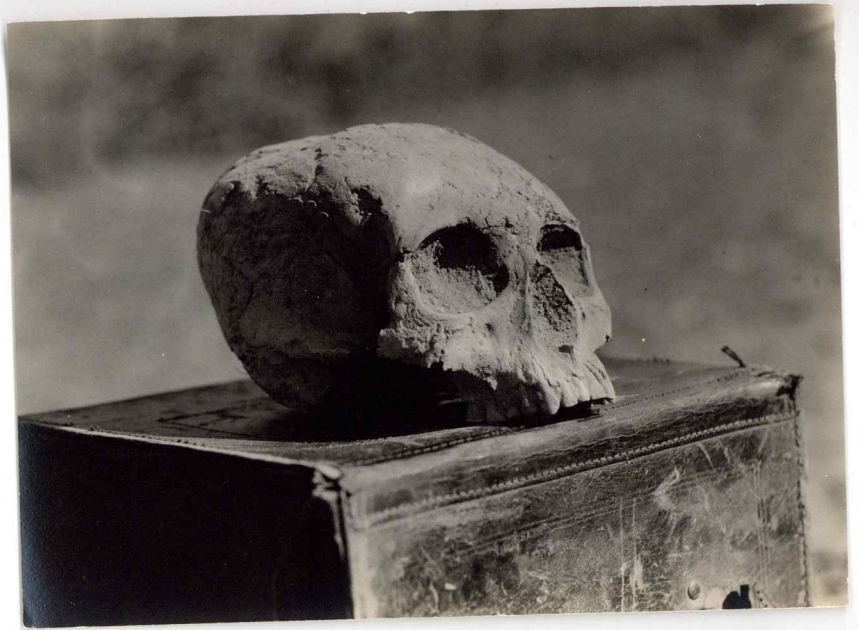




exp. Kunst



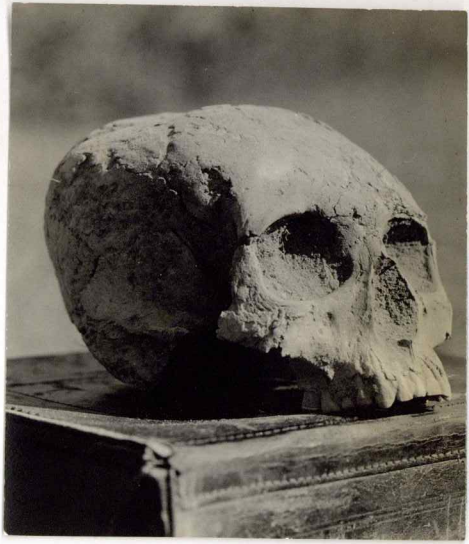


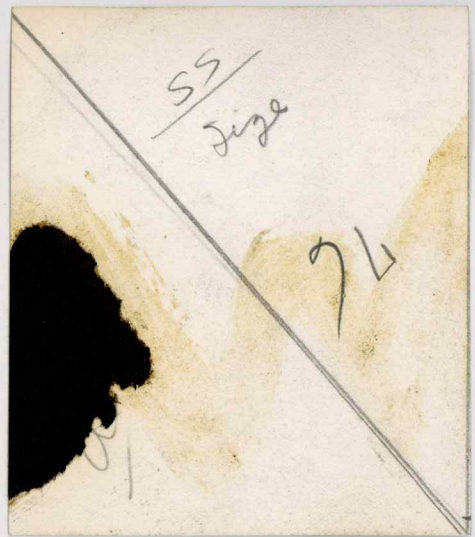


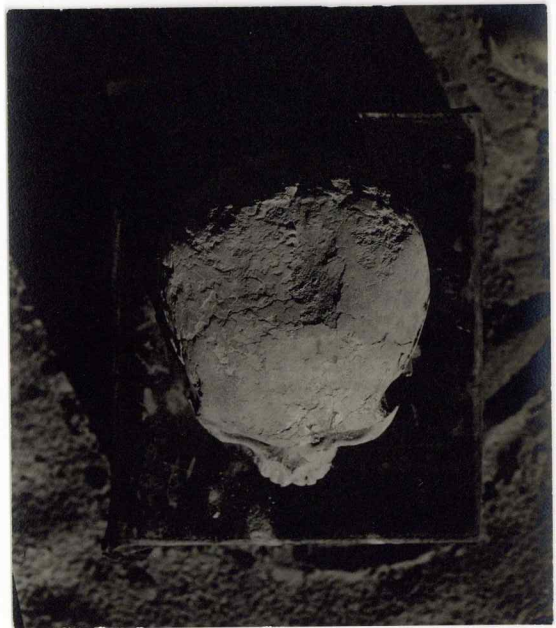
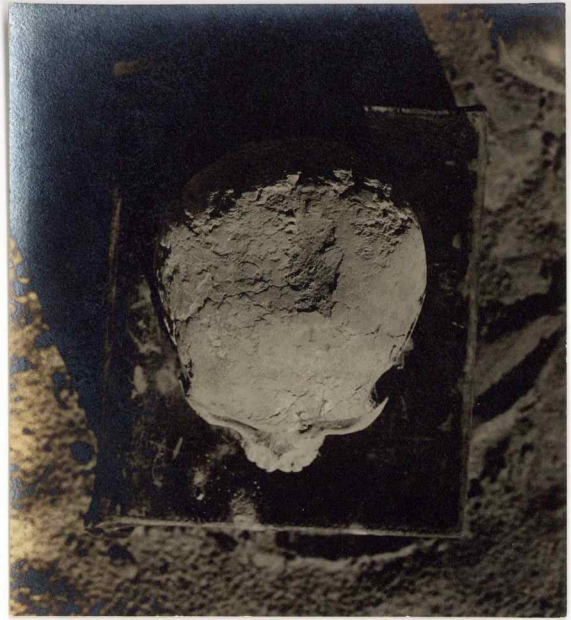
✓  
VE

exp. pmt

9L

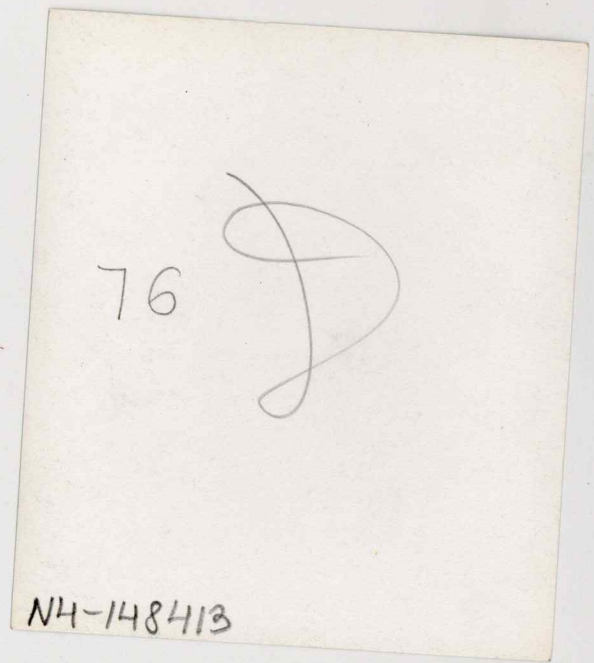








N4-148413



76

D

N4-148413



76D  
NH-148413



NH-148414



76

exp. print

N4-148415

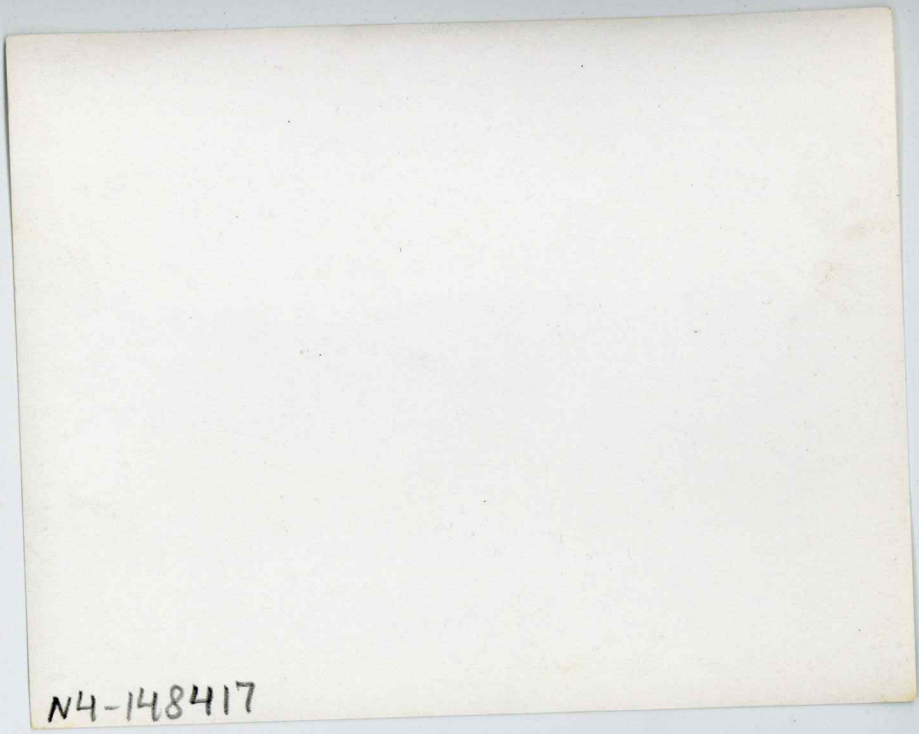
N4-148416 - N4-148438



N4-148416

N4-148416

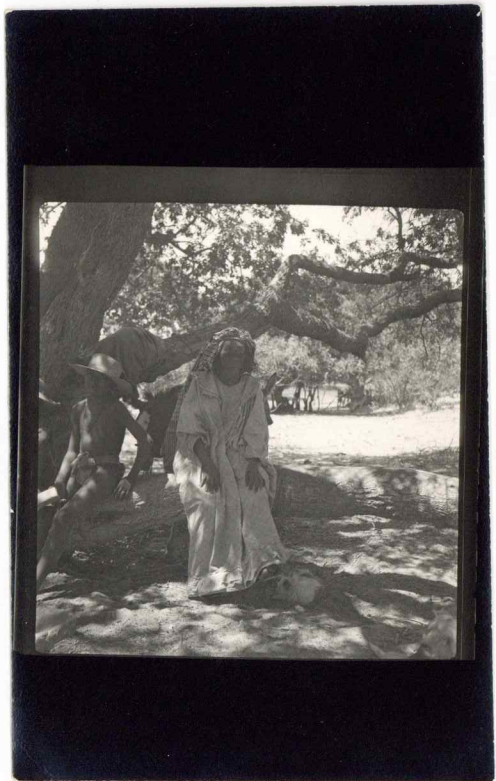


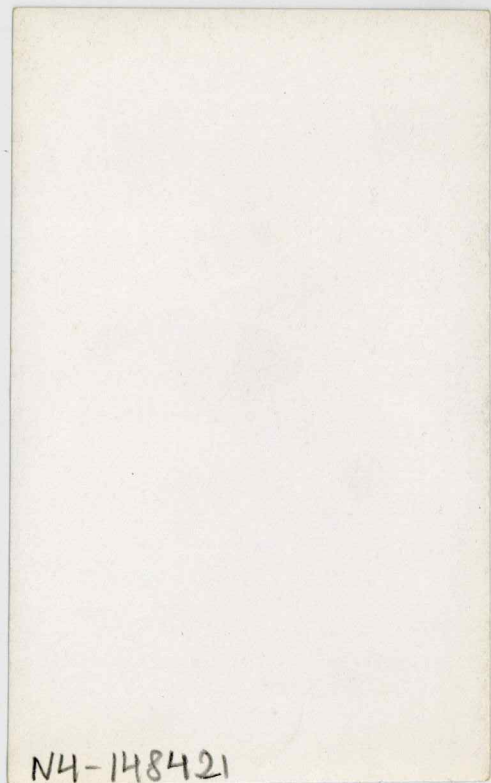
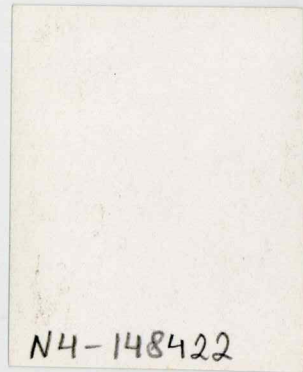


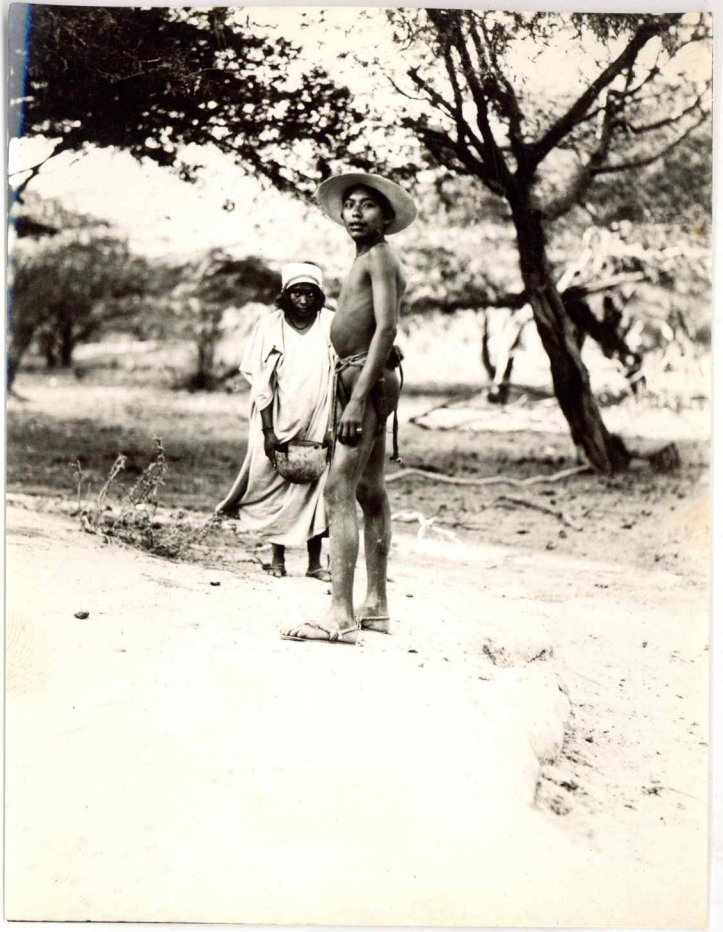
N4-148417



N4-148418

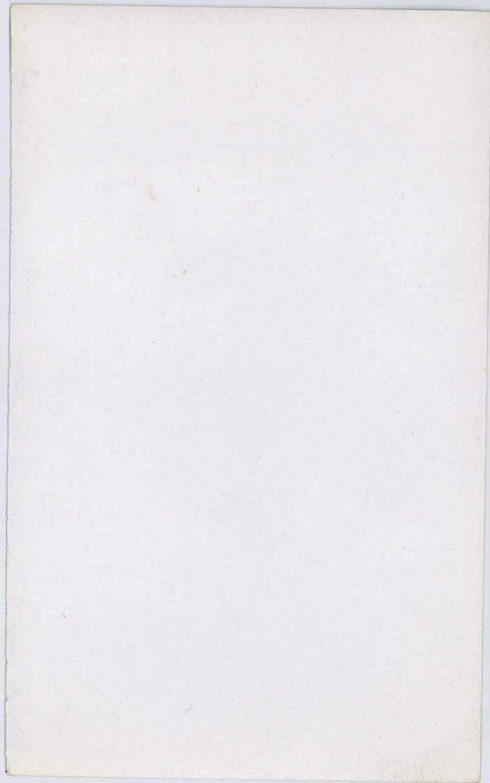






100

N4-148424





82

N4-148425

83

N4-148426



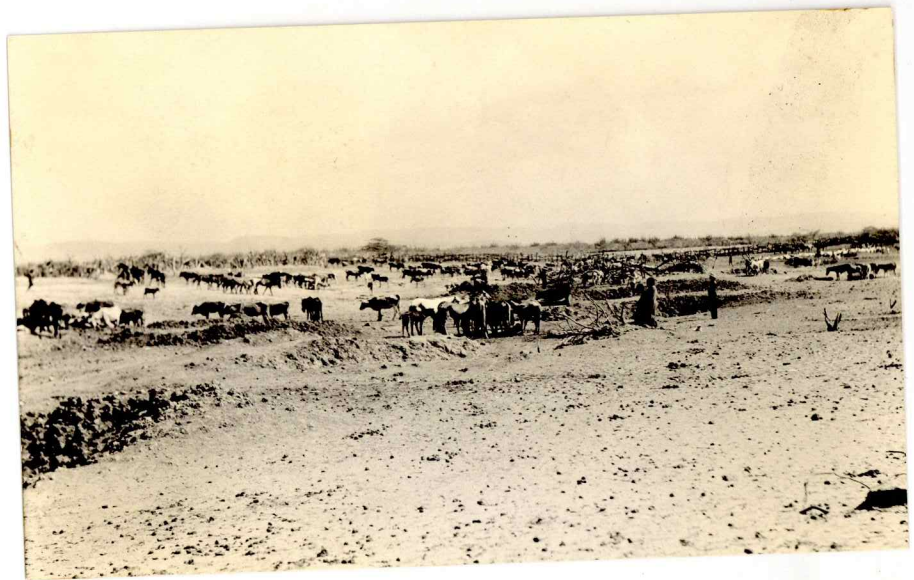
83

N4-148427

83

a.

N4-148428



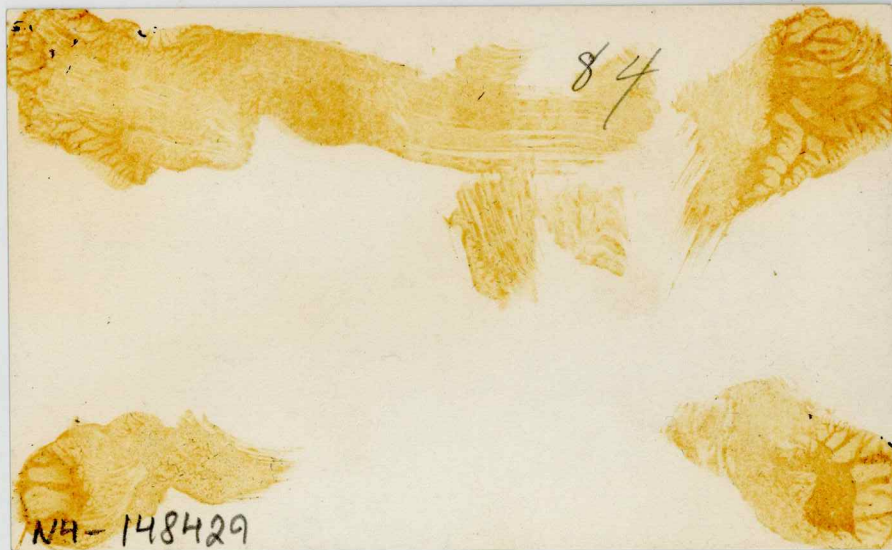
Quapin workman  
(working for  
at archaeological  
excavations

NH-148428



Quapian workman  
(working for  
at archaeological  
excavations

NA-148428



NA-148429



NH-148429

NH-148430

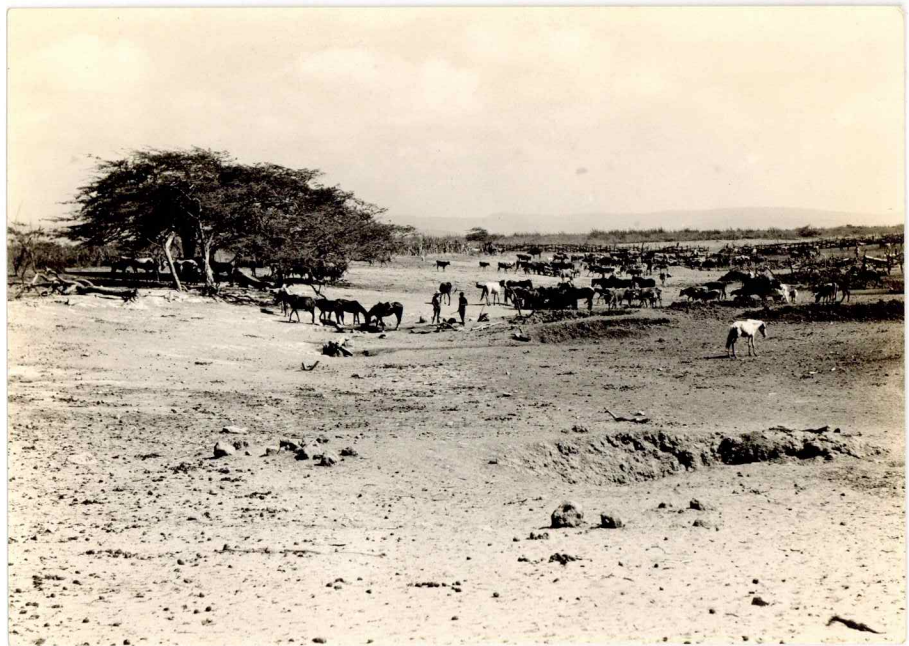
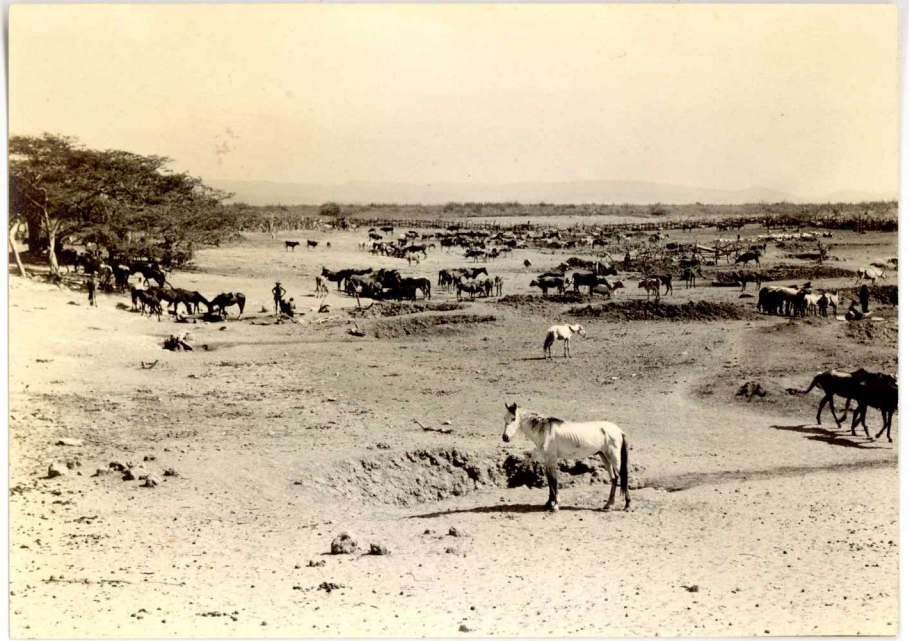


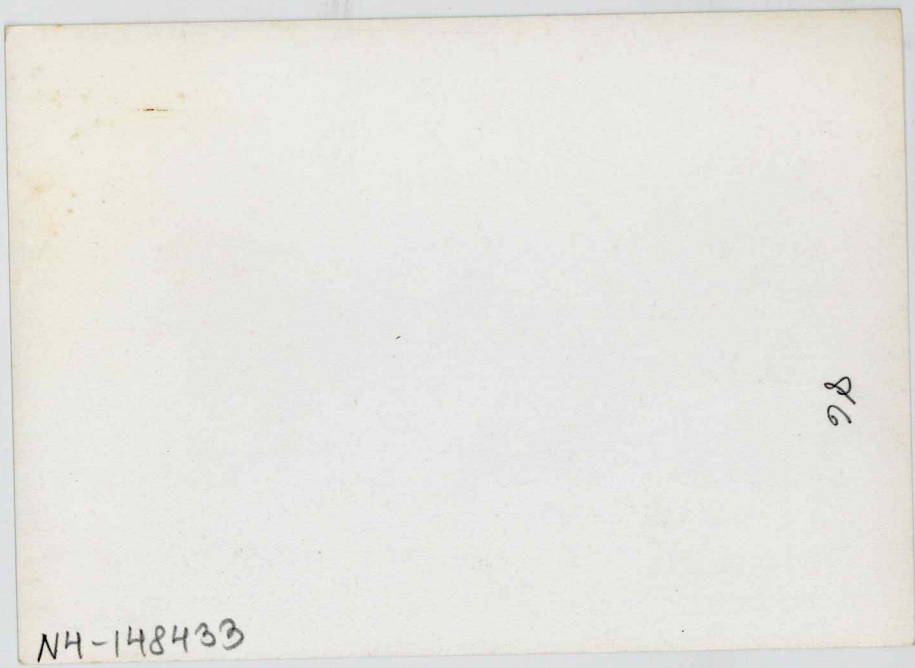
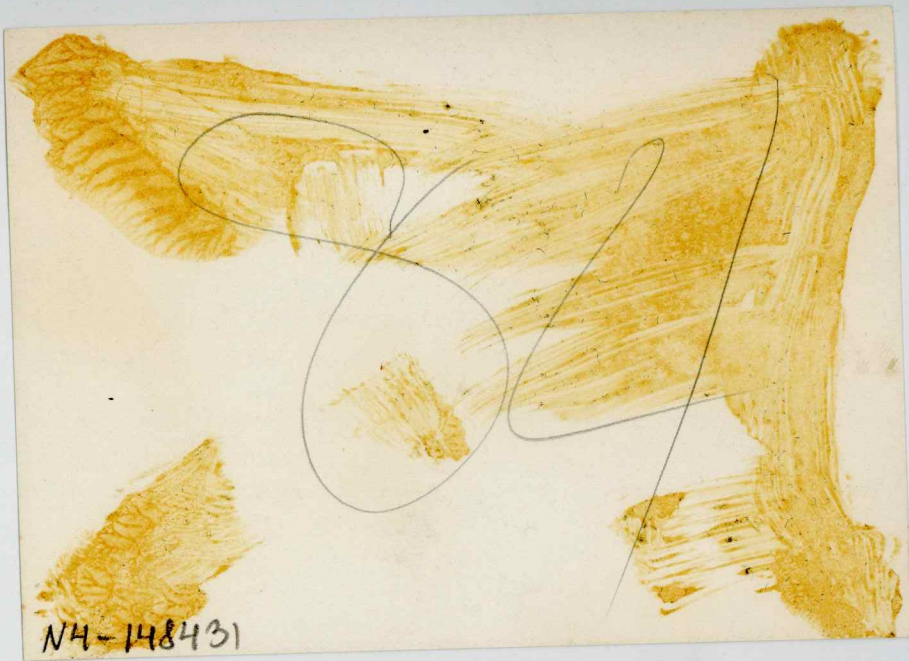
85-

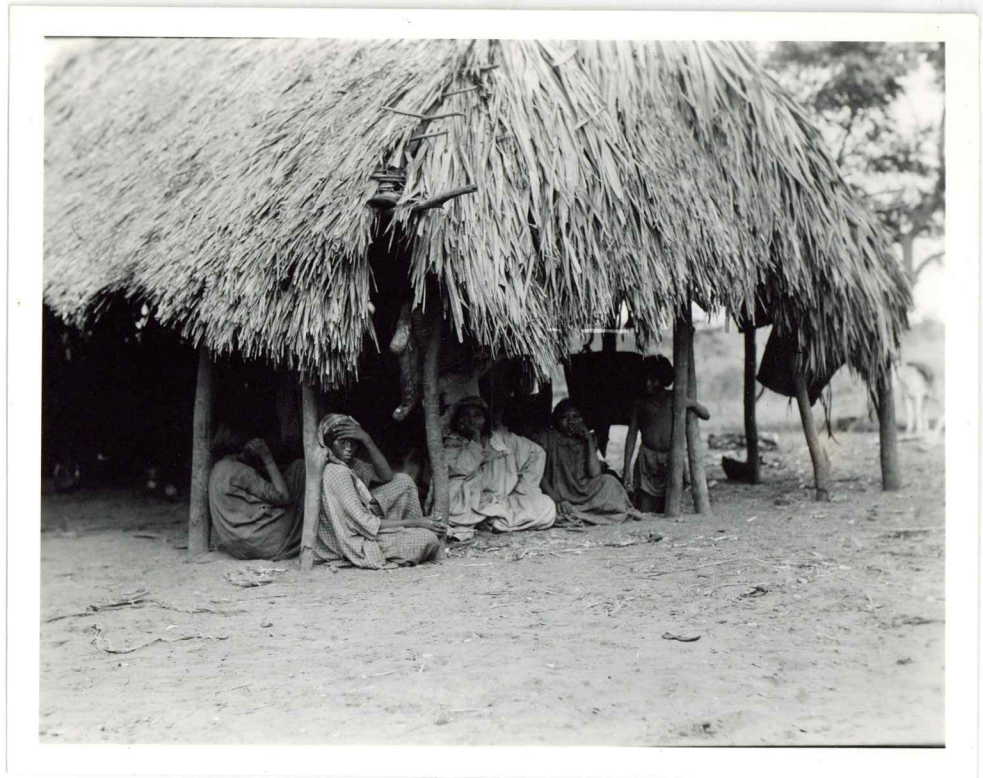
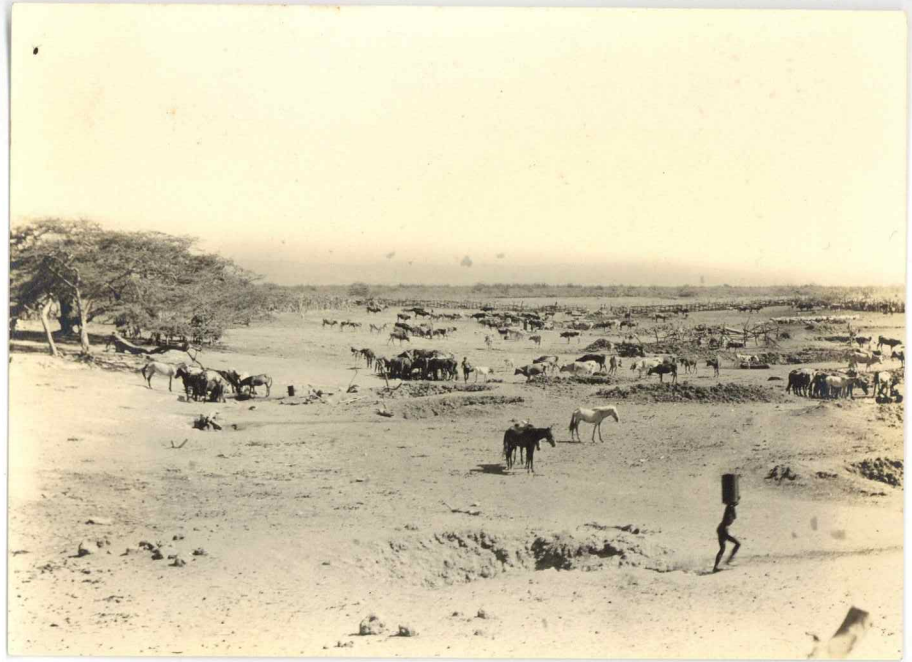
N4-148430

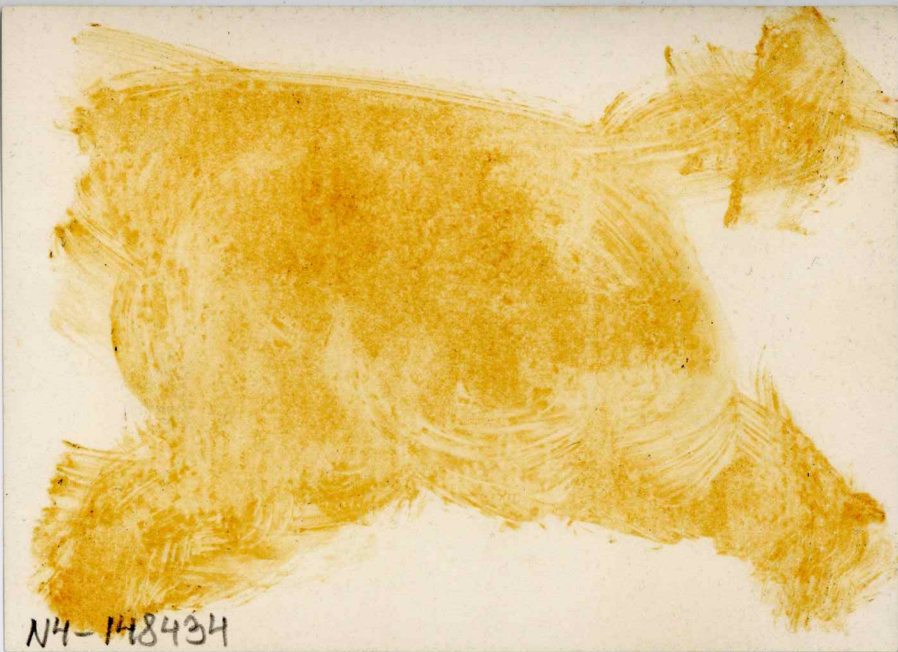
85-

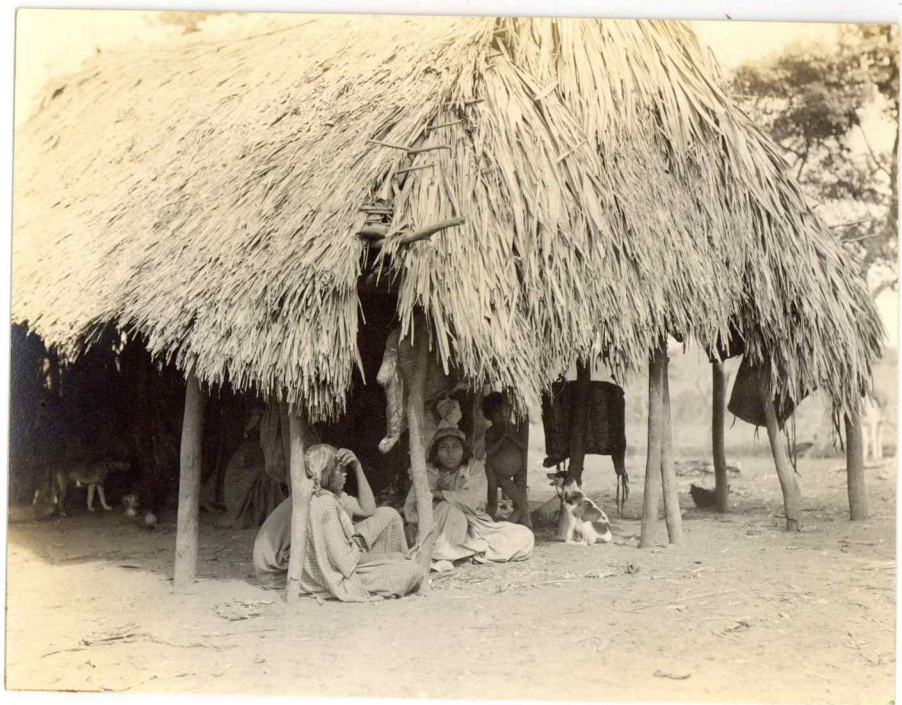
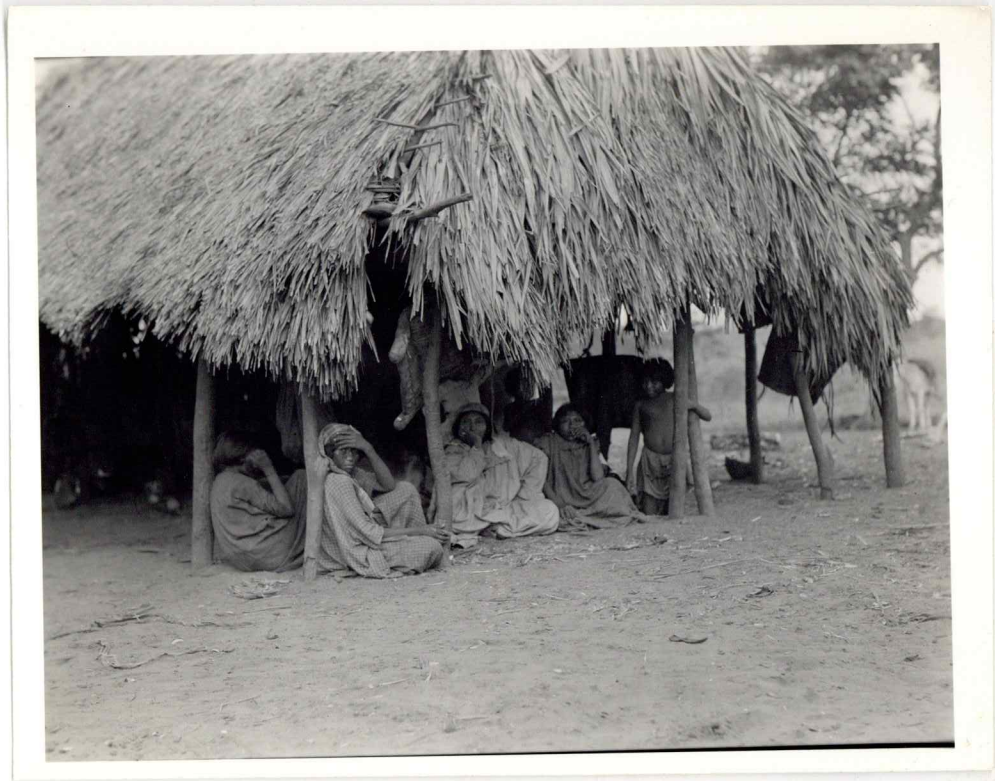
N4-148430











NH-148436

88

NH-148437



88

N4-148437

90

Three Pastors

N4-148438



90

*Three pictures*

NH-148438

90

*Three pictures*

NH-148438