

3

12

Typical Yanwa shelter of the more
permanent kind employed in the
rainy season. The figure second
from the left is Pablo Reyes of
Linda Para

8. Yaguwa camping with
dthor by the Cupanapara



9

Another view of 8.
NH-147452



N4-147452



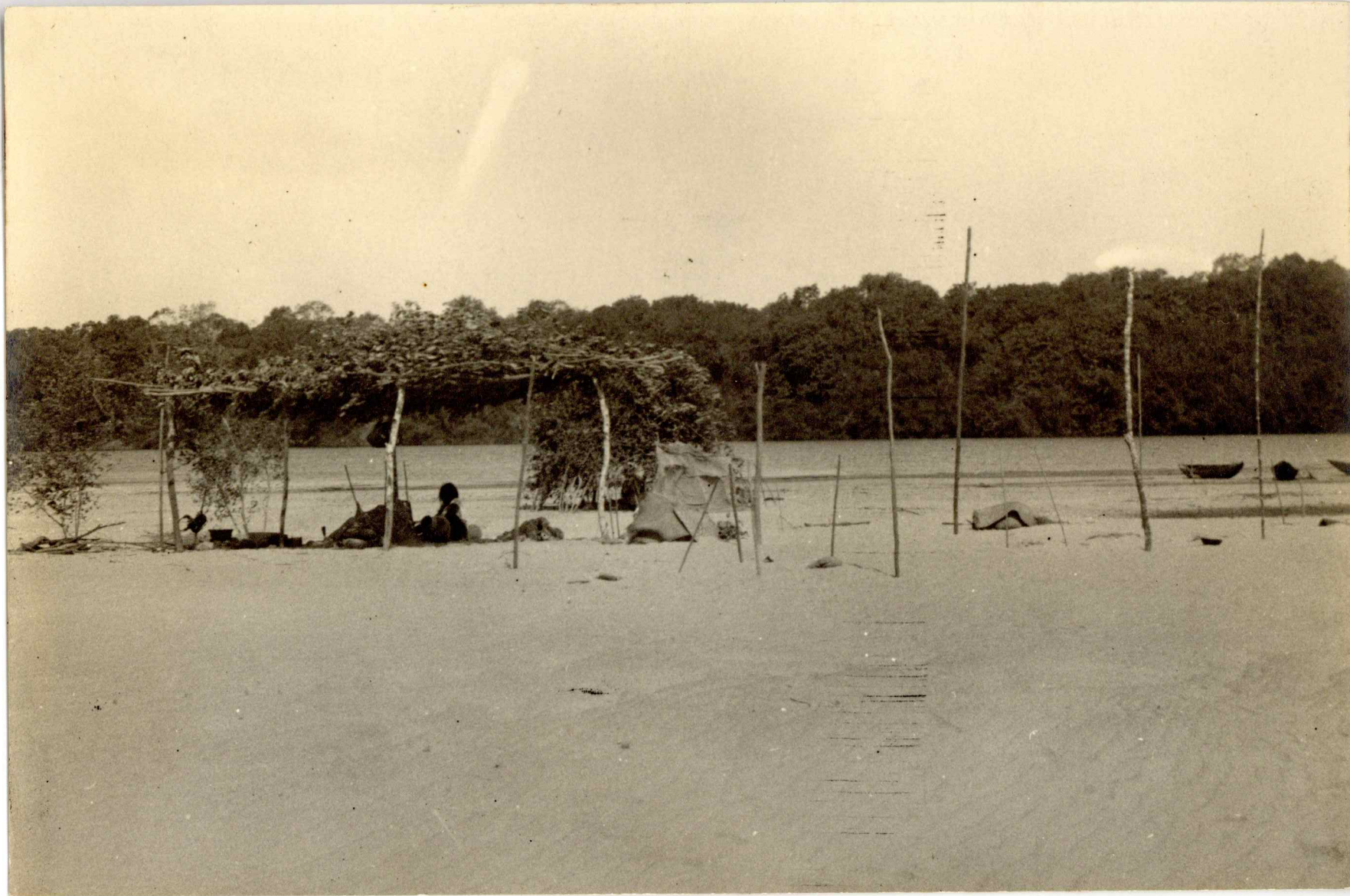
7. Yaruwo camp on the Caganapero river.

Note: Shelter consists of branches stuck in the sand.

To the right can be seen shelter made for
v. Petruello



N4-147453



[Marano camp]

NH-147453



N4-147454



Συαυνο camp]

NH-147454



N4-147455



[Yaruro camp]

N4-147455



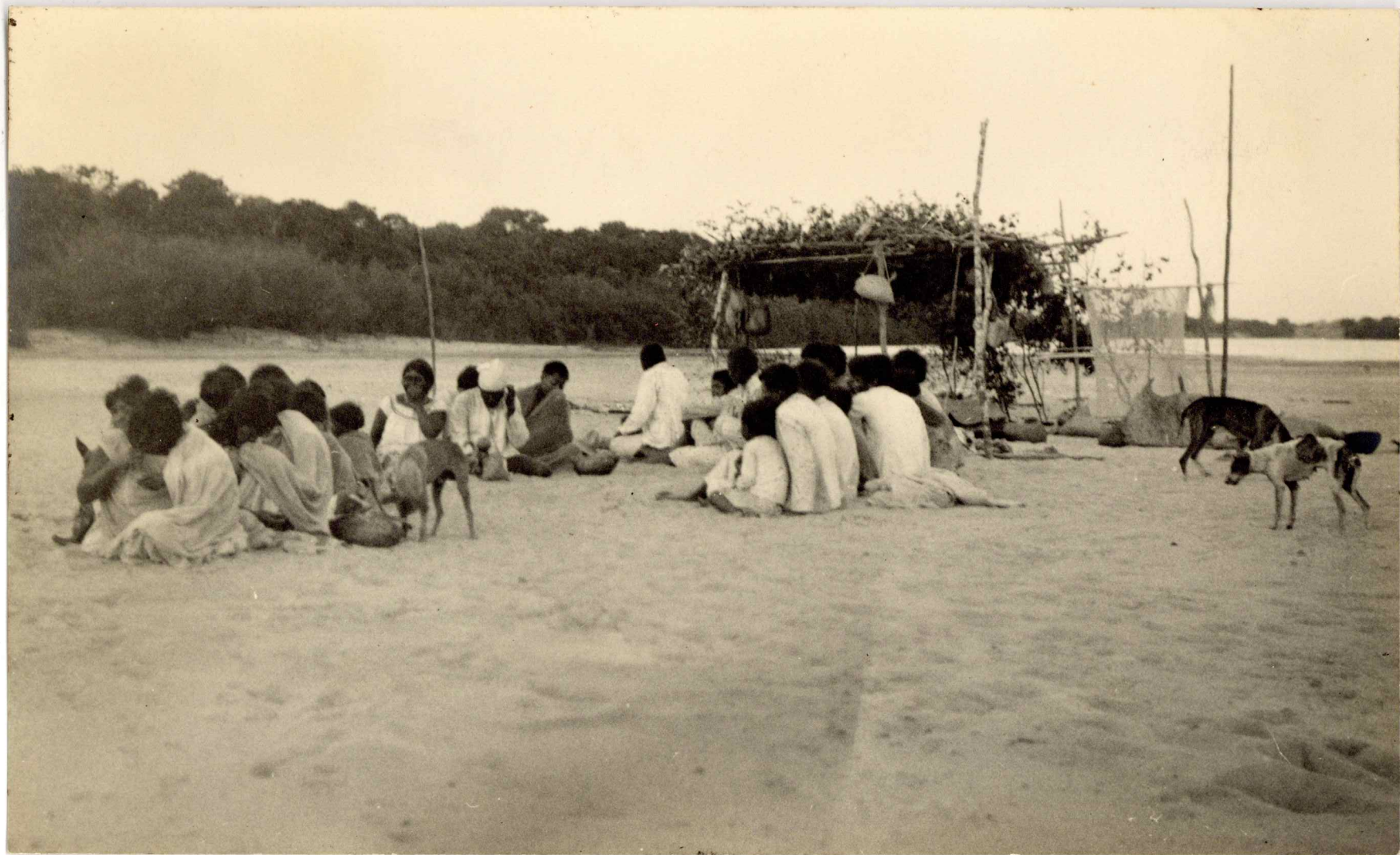
13

Arthur's shelter by the Capanapaco

N4-147456



[Yaruro camp]



Συμμετοχή

NH-147457



~~The moon~~

Group awaiting sunrise after all-night ceremony (described in book)

note lean dogs

N4-147457



Yaruro camp
Capanaparo
Marich 1934

a typical dwelling consisting only of branches thrust in
~~into~~ ground for shade

N4-147458



27. Yarrow camp.