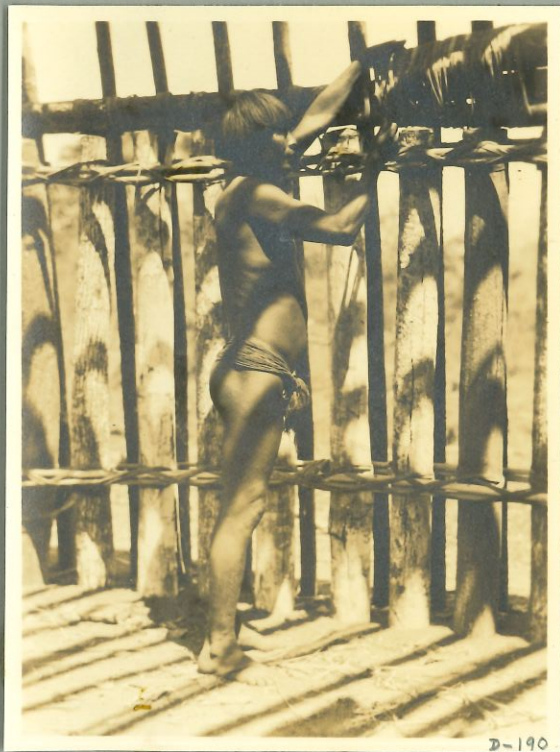




D-182 - U of P. M.

Neq.



D. 190 - Lashing frame
of Building -
River Caluani

Neq. 27071

D-191
One of very few old
women seen

D-186
Suva Indian
+ Victor Doy

Neq. 27667



D-186

D-187
Suva Indians +
Victor Doy

Neq. 27668



D-187

D-188
Baking bread +
sifting flour

Culver's R. D-188
U.S.P.M.

Neq. 27669



D-188

D-187
Suva Indians +
Victor Doy
Neg. 27670



D-192
Frames of a large
thatched Building
Neg. 27672



D-195
Suva Indian +
Victor Doy.
Neg. 27673





D-193

D-193
U. of P. M.



D-194

D-194
U. of P. M.



D-197

D-197
U. of P. M.



D-198

Neq. 27674

D-196
Frames of large
thatched dwelling



D-196

D-200
Only Polygamous
family encounter
(Yawalopiti)

Neq. 27676



D-200

D-201
Same as 200.

Neq. 27676

D-201
U. 8 P. M.



D-201

D-202
Transportation of
Pots from Burial
Site #2 - Descalvador
Neg. 27677



D-202

Neg. 27678



D-203

D-205
Dr. V. M. Petullo in
Bark canoe.
Culveni River.
Neg. 27679



D-205

D-206

Neq. 27679



D-206

D-207
Transportation of
Pots from Burial
Site #2
Desalvados

Neq. 27680



D-207

D-208
Culuseõ River Indians
working.

Neq. 27681



D-208

D-209-
LONDON ILLU. NEWS
U. & P. M.

D-209
Culvenó River
Village

CF. NEG. 26406



D-211 -

One of Petullo's
camps.

Neg. 27683



D-212
Caterpillar

(Descalvader)

Neg. 27684



D-213





D-216



D-217



D-218



D-219



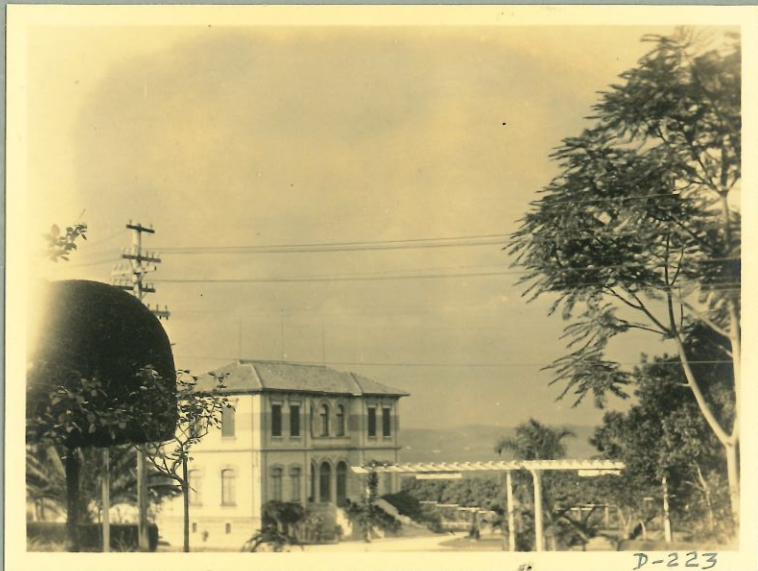
D-220



0221



D-222



D-223



D-224



D-225



D-226



D-227

D-228
Sugar loaf mt.
Rio de Janeiro.
Neg. 27700



D-228

D-229
Harbor at
R. J.
Neg. 27701



D-229

D-230
Mountains behind
R. J.
Neg. 27702



D-230

Neg. 27703



D-232

Neg. 27704



D-233

Neg. 27705



D-234

Neg. 27706



D-235

Neg. 27707



D-236

Neg. 27708



D-237

Neg. 27709



D-238

Neg. 27710



D-239

Neg. 27711



D-240

Neg. 27712



D-241

D 242
Petrullo &
Perfilio

Neg. 27713



D-242

Neg. 27714



D-243

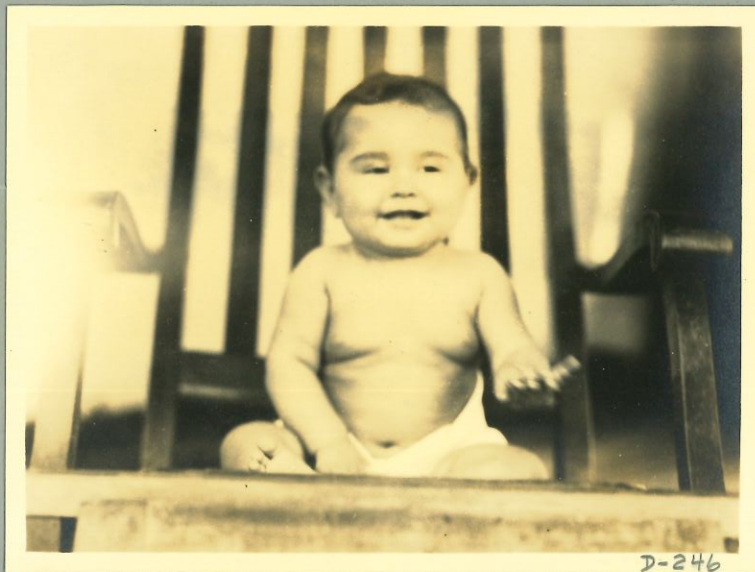
Neg. 27715



Neg. 27716



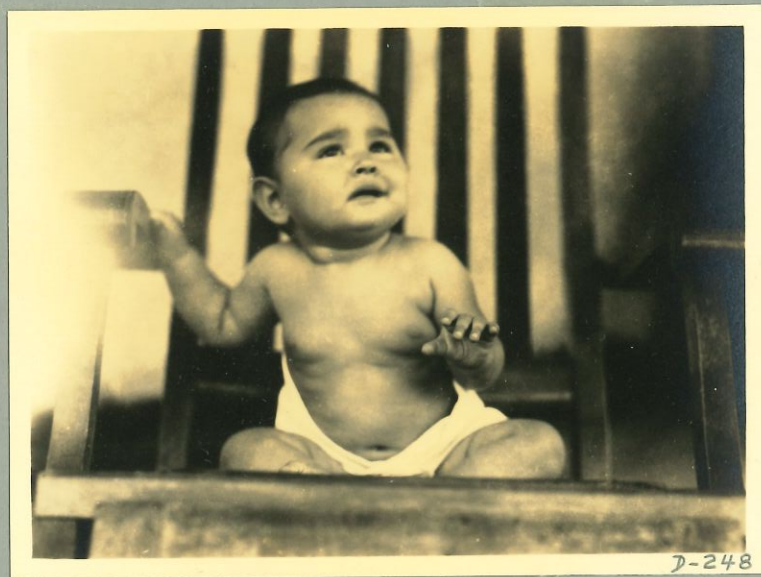
Neg. 27717



Neg. 27718



Neg. 27719



Neg. 27720



Neg. 27721



Neptun Party

Neg. 27722



D-252

Bororo village
on River S. Lorenço

Neg. 27723



D. 253

Bororo village
on river Soo Lorenzo

Neg. 27724



D-253

D-254

Bororo joguon
dance at
Presidente near
Descealvados

Neg. 27725



D-254

D-255

U. of P. M.

D-255

Bororo joguon dance
at Presidente near
Descealvados

Neg. 27726



D-255

D-204 - Borow Tiger Dance
front view of dancer



D-204

D-204
U. of. P. M.

of neg 27602
244983



D-199

Neg. 27675



D-210

D-210 - Old Indian Woman
(angaité) Puerto Pinasco
Neg. 27692



D-258

D-258 - Hunch-backed
Kitchen boy. Desalvados
Neg. 27729

D-256
Jagua Dovee
Borrow. at
Presidente near
Descalvador

Weg. 27727



D-256

Weg. 27728



D-257

Weg. 27730



D-259

Neg. 27731



D-260

Neg. 27732



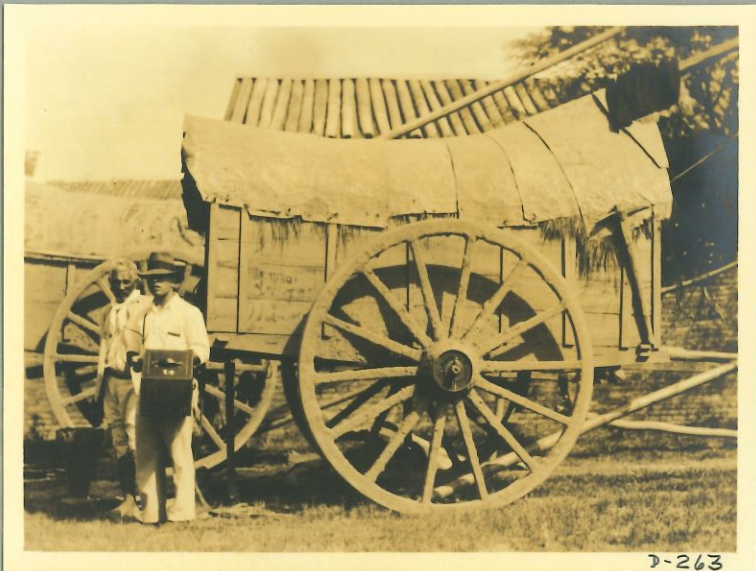
D-261

Neg. 27733



D-262

D-263
Bull Cart
Neg. 27734



D-263

Neg. 27735



D-264

Neg. 27736



D-265

D-266

River Paraguay

Neg. 27737

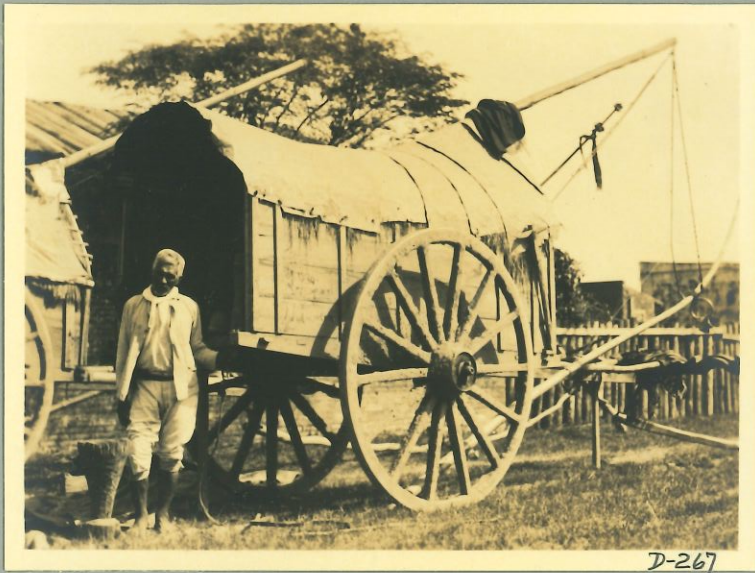


D-266

D-267

Bull Cart

Neg. 27738



D-267

Neg. 27739



D-268

Neg. 27740



D-269

Neg. 27741



D-270

D-271
Old Fort below
Columbia

Neg. 27742



D-271

Neg. 27743



Neg. 27744



Neg. 27745



Neg. 27746



D-275

D-276
*Burial jars
near Descolvodes*

Neg. 27747



D-276

Neg. 27748



D-277

Neg. 27749



D-278

Neg. 27750



D-279

D-280

Jucuré
(avocovela)

Neg. 27751



D-280