



R1

Neg. 27939



R2

Neg. 27940



R3

Neg. 27953



R4 - São Paulo
Neg. 27754

R4



R5 São Paulo
Neg. 27755



R6 São Paulo
Neg. 27756



R7 Snake Farm
São Paulo Neg. 27757



R8 Snake Farm
São Paulo Neg. 27758



R9 Neg. 27759



R10 Neg. 27760



R 11 Neg. 27761



R 12 27762



R 13 Neg. 27763



R 14 Neg. 27764



R 15 Neg. 27765



R 16

R-16
Boumba water front

Neg. 27766



R17 Corumba street
Neg. 27767



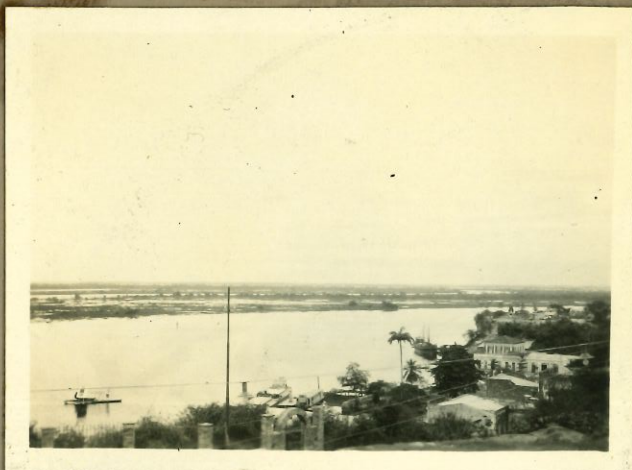
R18 Hotel at Corumba
Neg. 27768



R19 Avenue at Corumba
Neg. 27769



R20 Flood at Corumba
Neg. 27790



R21 The flood at Corumba
Neg. 27771



R22 River front Corumba
Neg. 27772



R23

Expedition's Plane

May. 27773



R24

Paraguay River

May. 27774



R25

Paraguay River

May. 27775



R26

Abandoned ranch house

Paraguay river

May. 27776



R27

Paraguay River

May. 27777



R28

Paraguay River

May. 27778



R29 Expedition's launch
"Wunco"
Neg. 27779



R30 Expedition's launch
"Wunco"
Neg. 27780



R31 Paraguay river
bank
Neg. 27781



R32. Fishing in Paraguay
River
Neg. 27782



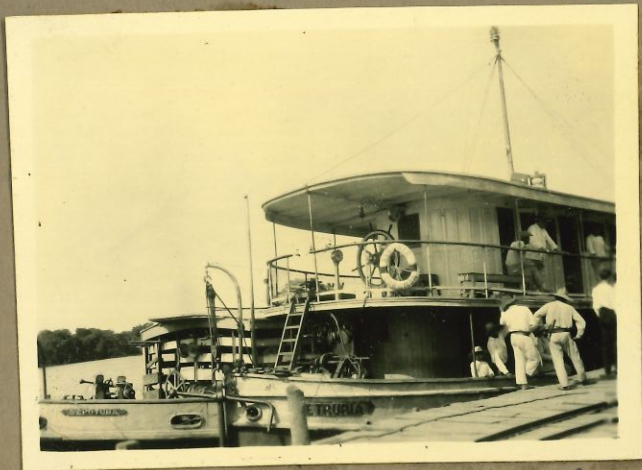
R33 Fishing in Paraguay
River
Neg. 27783



R34 Fishing - Paraguay River
Neg. 27784



R35 a 5ft. Lily pod
Paraguay River Neg. 27785



R36
River steamer which carried
Expedition from Corumbá to
Descalvador
Neg. 27788



R37
The Expedition's plane
at Descalvador
Neg. 27941



R38
Davenport's quarters at
Descalvador.
Neg. 27942



R39
The Church
Descalvador
Neg. 27943



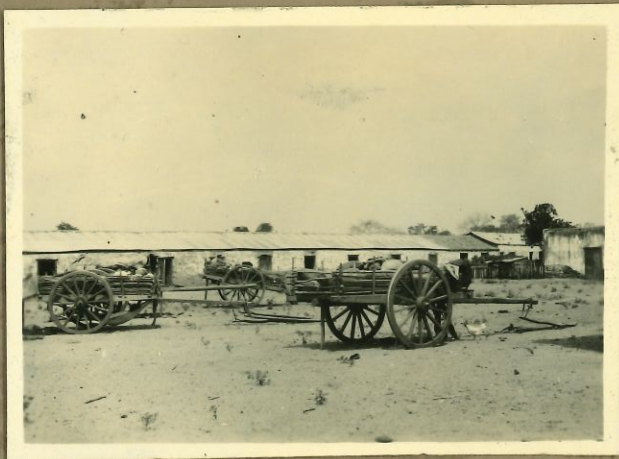
R40
The Church
Descalvador.
Neg. 27944



R41 Descalvador
Neg. 27945



R42 Descalvador
Neg. 27946



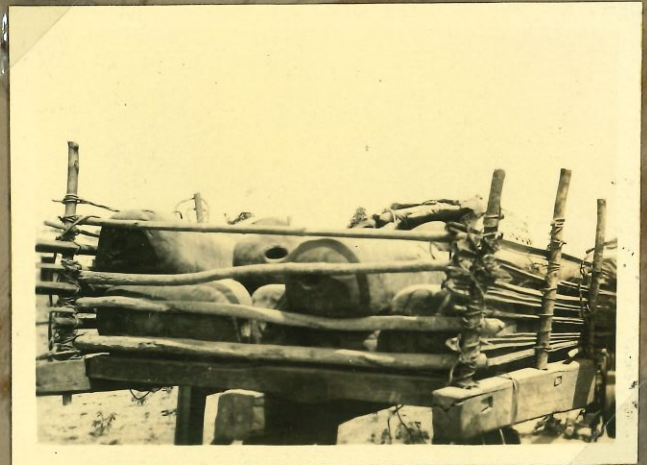
R43 Ranch Hands Quarters
Descalvador
Neg. 27947



R44 Machine Shop
Descalvador
Neg. 27948



R45 Manager's House
Descalvador
Neg. 27949



R46 Trucking in Archeology
finds - Descalvador
Neg. 27950



R47 Indian Quarters
near Descalvador
Neg. 27899



R48 Indian Quarters near
Descalvador
Neg. 27800



R49 Petullo's room
Rehn's Descalvador
Neg. 27801



R-50
R50 Rehn's Room
Descalvador
Neg. 27802



R51 Rehn's room
Descalvador
Neg. 27803



R-52
R62. Rehn's room
Descalvador
Neg. 27804



R53 The radio set-up at
Desalvador
Neg. 27805



R54 Cactus tree near
Desalvador
Neg. 27806



R55
Neg. 27807



R56
Neg. 27808



R57
Neg. 27809



R58
Neg. 27810



R59
Neg. 27811



R60
Neg. 27812



R61

Neg. 27813



R62

Neg. 27814



R63

Neg. 27815



R64

Neg. 27816



R65

Neg. 27817



R70 Bringing back a tapir
Neg. 27922



R69 Bringing back a Tapir
Neg. 27921



R68 Indian Boy
Descolvador
Neg. 27920



R67 Rhen's Hunter
Descolvador
Neg. 27919



R66
Neg. 27918



R71

R-71
A.N.S.

R-71 - Dead araranha (giant otter)

Neq. 27923



R72

Dead totu canastu
(giant armadillo)

Neq. 27924



R73 a secretary bird

Neq. 27925



R74

Secretary bird

Neq. 27926



R75

Cameras on location

Neq. 27927



R76

Cameras on location

Neq. 27928



R77

Camera on location
Neg. 27929



R78

Camera on location
Neg. 27930



R79

Camera on location
Neg. 27931



R80

Camera on location
Neg. 27932



R81

a chase
Neg. 27933



R82

Hunting party near
Reservado
Neg. 27934



R83

reed

Neq. 27935



R84

reed

Neq. 27936



R85

reed

Neq. 27937



R86

a tiger hound

Neq. 27938



R87

As + Hill

Neq. 27939



R88

shelter of palm leaves

Neq. 27840



R89 Subsidiary ranch near
Descalvados used for
Hunting quarter
Neg. 27841



R90 Same as R-89
Neg. 27842



R91 Same as R-89
Neg. 27843



R92 Same as R-89
Neg. 27844



R93 Same as R-89
Neg. 27845



R94 Same as R-89
Neg. 27846



R95 Riding Horse
Neg. 27847



R96 Bull team
Neg. 27848



R97 Cattle at Desalvador
Neg. 27849



R98 Zebu Bull at Desalvador
Neg. 27850



R99 Young ranch boys
Desalvador
Neg. 27851



R100 Carol
Neg. 27852



R101 *Old Nest*
Neg. 27853



R102
Civilized Bororo home
near Descalvados
Neg. 27854



R103
Same as R-102
Neg. 27855



R104
Same as R-102
Neg. 27856



R105
Neg. 27857



R106
Neg. 27858



R107
Neg. 27859



R108
Neg. 27860



R109
Neg. 27861



R110
Neg. 27862



R111
Neg. 27863



R112

112

Neq. 27864



R113

Neq. 27865



R114

Bull Cart

Neq. 27866



R115

Cattle

Neq. 27867



R116

Carque drying

Neq. 27868



R117 Marco
Neg. 27869



R118
Neg. 27870



R119 Native Cook
Neg. 27871



R120 Mrs. Crosby & her Hill
Neg. 27872



R121
Left - small type deer Neg. 27873
Right - Red wolf



R-122
R.N.S.
The still legged Red Wolf of
Matta Juasso. Neg. 27874



R122 X ^{122 x}
Head of Red Wolf
Neg. 27875



R123
The largest type of Deer
Neg. 27876



R124
The largest type Deer
Neg. 27877



R125
Dead Mountain Lion
Neg. 27878



R126
Dead Mountain Lion
Neg. 27879



R127
Neg. 27880



R128

Mt. Lion in Tree
Neg. 27881



R129

Same as R-128
Neg. 27882



R130

Same as R-128
Neg. 27883



R131

Same as R-128
Neg. 27884



R132

Same as R-128
Neg. 27885



R133

Carrying Jaguar

Neq. 27886



R134

Dead Jaguar

Neq. 27887



R135

Stretched Jaguar Skin

Neq. 27888



R136

Dead Jaguar

Neq. 27889



R137

Dead Jaguar

Neq. 27890



R138 Hoopes left, Mrs. Crosby, James Rhen
Neg. 27891



R139 Scenes at sea
Neg. 27892



R140 Scenes at sea
Neg. 27893



R141 Scenes at sea
Neg. 27894



R142

Scene of sea
Neg. 27895



R143

Scene of sea
Neg. 27896



R144

Scene of sea
Neg. 27897



R145

Scene of sea
Neg. 27898



R146

Scene of sea
Neg. 27899