



2 - Cave
Neg. 27958

2x



3 - Expedition members

Neg. 27314

3



3A - Expedition members

Neg. 27315

3A

4- Expedition's members
at cave entrance

Neq. 27316



4



5- Expedition
members dining

Neq. 27317

5

6- Kitchen scene

Neq. 27318



6

7- Unloading Expedition's
Tons at Desalvador

Neq. 27320



7x



8- Trucks in
water at
Corumbá

Neq. 27322

8

9- Carnival at
Corumbá

Neq. 27323



9

10 - Steamer and
barges which carried
Expedition - Comumba to
Descalvados

Neq. 27324



10



11 - Indian work-
men -
Descalvados

Neq. 27325

11

12 - Native 2-wheel
Bull cart

Neq. 27326



12

13- Crosby + Clarke
at movie camera

Neq. 27327



13

14- Movie camera

Neq. 27328



14

15- Hammocks under
nets - Fore deck of
steamer "Paraguay"

Neq. 27329



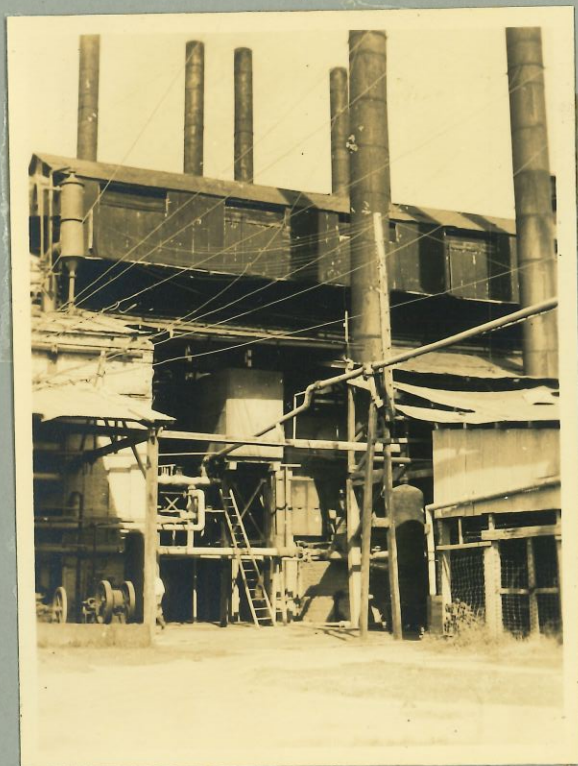
15

16- A sweep of the
Paraguay River

Neq. 27331



16



17- Refinery

Neq. 27332

17

18- Sunset on the
Paraguay River

Neq. 27334



18

19. D. Newell & Hunting
Dogs

Neq. 27335



19



20

20 - D. Newell with
Hunting dog & pet
dog "Laney"
Neq. 27336

21 - Fawn

Neq. 27340



21

21A -
Mrs. Crosby + Fawn at
Descalvados

Neq. 27341



21A



22 -
Trude's launch
+ canoe

Neq. 27343

22

23 - Moving Expedition's
Kohler lighting plant
at Descalvados

Neq. 27344



23

23A - Moving Expedition
Kobler lighting plant
at Desobrocks
Neg. 27345



23A

23B - same as 23A

Neg. 27346



23B

A23B -

Hunting before the flood
subsided at Desobrocks



A23B

~~23B~~

A-23c
Hunting before the
flood subsided at
Desalvados



A23c

24- Fox terrier pup

Neq. 27347



24

25- D. Newell & fawn

Neq. 27348



25

25A - D. Jewell + fawn

Neq. 27349



25A

26 - Marsh
grass

Neq. 27350



26

27 - Canoeing over
what will soon be
dry ground

Neq. 27351



27

28- Same as 27

Neq. 27352



28



30- D. Newell + Lucuro he shot 30

Neq. 27354



30A- Same as #30

Neq. 27355

30A

31.
Cactus on hillside

Neq. 27356



31

32. *Otter
nursing on
bitch*

Neq. 27357



32



33- *a Tu-u-u*
Neq. 27358

33

33A

Tu-u-u

Neq. 27359



33A



34. *Stretch of the
Paraguay River*
Neq. 27362

34

36 - In-u-u feeding

Neq. 27365



36

36A -

same as 36

Neq. 27366



36A

36B

same as 36

Neq. 27367



36B

37-

same as 36

Neq. 27368



37

37A-

a forest drying
ground

Neq. 27369



37A

38-

Taking off

Neq. 27370



38

38A-

Tu-u-u-

Neq. 27371



38A

38B

Various Birds taking wing

Neq. 27372



38B

42-

Buzzards

Neq. 27378



42

38c
A.N.S.

38c- Ju-u-u
Neg. 27373



38C

38-D- Ju-u-u
Neg. 27374



38D

38-E- Ju-u-u
Neg. 27374



38E

39- Ju-u-u
Neg. 27375



39

41. A rough hand
at Descolvador
Neg. 27377



41

47. Manuella

Neq. 27383



47



Bororo

Neq. 27384

47A

43. Ex Indian girl now a ranch girl 43

Neq. 27379.

46. Chief of degenerate Bororo near Descalvados + another Bororo

Neq. 27382



46

44- Ant nest
on Ponteval

Neq. 27380



45- Chief of Degenerato
Bororo near
Descolvados

Neq. 27381



45



Neq. 27386

48A

Young lady of Boumba

48

Neq. 27385



Some of 48 + 48A

Neq. 27387

48B



Carnival at Boumba

Neq. 27388

49

51. Armadillo

Neg. 27951



51

52. Indian Boy

Neg. 27389



52

53. Pigeon Conoes
Bringing in Palm Logs

Neg. 27390



53

53A - Bringing in
Polar logs
Neg. 27391



53A



River Paraguay
Neg. 27393



Expedition en route ⁵⁵
Columba to Desolador
Neg. 27394

56 - Crocodile on river
bank

#56
A.N.S.

Neq. 27395



56



57

57 - Jaguar in tree

Neq. 27396

58 - A park in Cuyabá

Neq. 27398



58

58B
Church in Cayota

Neq. 27400



58A - Government Bldg.
Cayota

Neq. 27399



58C - Park - Cayota

Neq. 27401



58D - Park - Cayaba

Neg. 27402



58D



59

59 - Tronche, Col. Galvão,
Forbes, Clarke, Gen.
Rondon + Johnson
at Porte Joffre

Neg. 27403

60 - Gen. Rondon + Johnson

Neg. 27404



60

61- Cow killed by
Jaguar

Neq. 27405



61



~~61~~

62- Manuel the waiter

Neq. 27406

62

63- D. Newell + Town

Neq. 27407



63



64- Boys at Descabados ⁶⁴
Neg. 27408

^{64A}
Neg. 27409



^{64B}
Neg. 27410

^{64C}
Neg. 27411



Neq. 27412

64D



Neq. 27413

64E



65

Neq. 27414



65A

Camera man's Helper

Neq. 27415



Flower

68

Neq. 27418



*Brunyiny Home a
Lopir*

66

Neq. 27416



Brazilian Hunting Party 67
on oxen.

Neq. 27417

✓

*San Luis de Caseris
from North*

Neq. 27419



69

*San Luis de Caseris
from N. E.*

Neq. 27420



69A

*San Luis de Caseris
from West*

Neq. 27421



70

71- River Bends on
Paraguay between
Descalvado + Caserio

Neg. 27422



71

72. Topirapuan
where Roosevelt
left the river

Neg. 27423



72

Same as 72

Neg. 27424



72A

Same as 72

Neg. 27425



72B

73- a clearing near
headwaters of
River Paraguay

Neg. 27426



73

74- Ranch in
Paraguay north
of Caacres

Neg. 27427



74

75. Ranch on Paraguay
River north of
Caceres

Neg. 27428



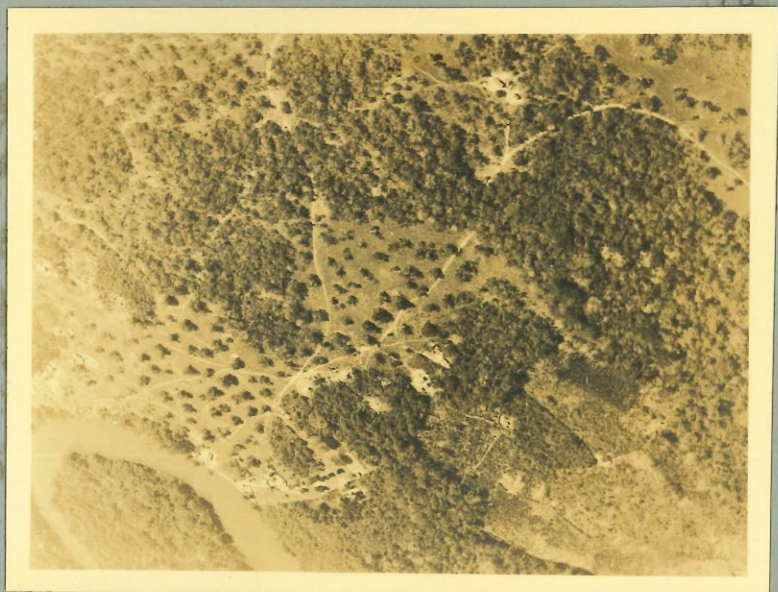
76. Paraguay River
& jungle south
of Tres Bomas

Neg. 27429



77. Large ranch south
of Posta dos Bugres

Neg. 27430



78. Huts near
ranch 18 miles south
of Sujeer

Neq. 27431



78

79. Ranch 60 miles
north of Caceres
on Paraguay River

Neq. 27432



79

#80-
L. I. NEWS

80. Paraguay River
Bends near headwater
North of Caceres

Neq. 27433



80

81. River Bends
between Descalvador
& Caceres

Neq. 27434



81

82. River Bends between
Descalvador & Caceres

Neq. 27435



82

83- John S. Clarke, Jr.

Neq. 27436



83



84- Raft in which two
young men were
drifting down
Paraguay to Buenos Aires
Neq. 27437

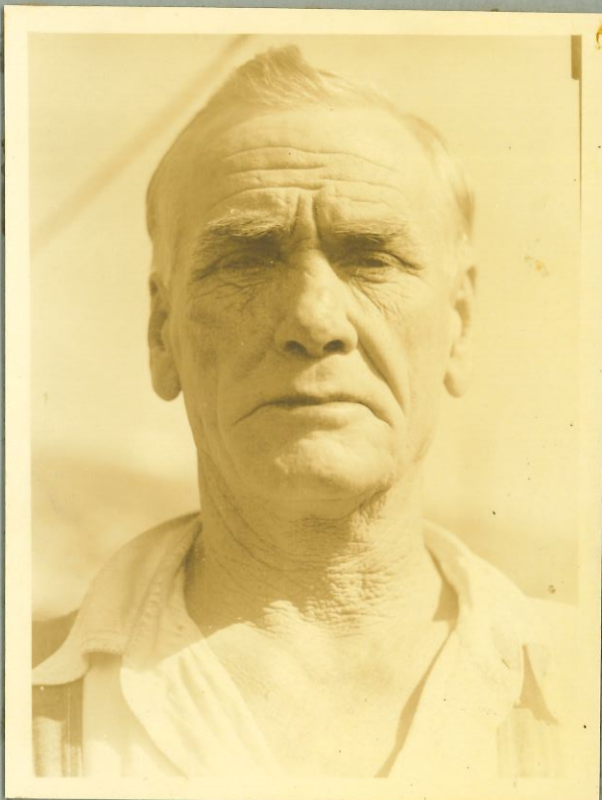
84

85- Rawls, Rossi, Newell
& Hooper

Neq. 27438



85



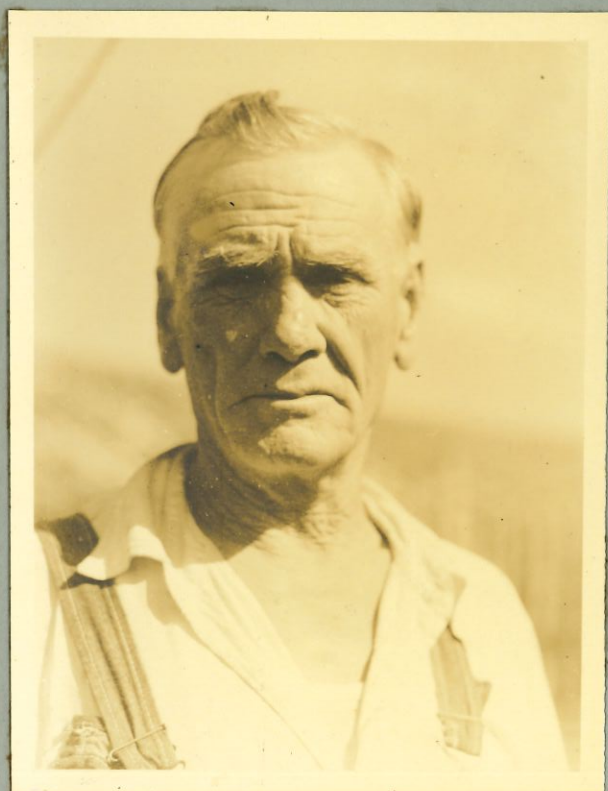
H. Rawls
Neg. 27440

86B



D. Newell
Neg. 27439

86A



H. Rawls
Neg. 27441

87



D. Newell
Neg. 27442

87A



89- Expedition Barge 89
Neg. 27446



J. Clarke 87C
Neg. 27444



88- The dock at Descalvados 88
Neg. 27445.



89A - Expeditions' Barge 89A
Neg. 27447



90A - S. Hopper, Mrs. Crosby 90A
+ Dr. Rhen. B
Neg. 27451



90B - Mrs. Crosby 90B
A
Neg. 27450



90 - Tamandua (Anteater) feeding. 90
Neg. 27448

91- shot from the
"Kid" motion picture

Neg. 27452



91

92- shot from the
"Kid" motion picture

Neg. 27453



92

93- shot from the
"Kid" motion picture

Tuca and Kid

Neg. 27454



93

94 - Baby Otter

Neg. 27455



94



95 - The Joyuar Corral

Neg. 27456

95



95A

Same as 95

Neg. 27457

95A



Same as 95.

Neg. 27458

95B



96 - Puma - nearly
out cold

Neq. 27459

96



96A - Reviving

Neq. 27460

96A



96B - Reviving.

Neq. 27461

96B



97. Seimel with
captured lion
Neg. 27462

97



98-
Porcupine with
prehensile tail
Neg. 27463

98



99. Same as
98.
Neg. 27464

99

100- Porcupine
with prehensile tail

Neg. 27465



#100
A.M.S.

100

101- Riding in
jungle.

Neg. 27466



101

102. Movie set
camp on Paraguay
River near
Descealvoche

Neg. 27467



102

103 - Baby topi
Neg. 27469



103



105 - Juwandrah
Neg. 27471

105

104 - Climbing tree to
Photograph Lu-u-u
Neg. 27470



104

106- Mother and
Pup Antelope

Neq. 27472



106

107- Baby Topi at
Descalvador

Neq. 27473



107

108- Baby In-u-u

Neq. 27474



108

109- Baby Tu-u-u

Neq. 27445



09

110- Piranha
(meat eating fish)

Neq. 27476



110

111- The aquarium
tank

Neq. 27478



111



112 Giant
anteater

Neq. 27479

112



112-A
Giant
anteater

Neq. 27480

112A



113-
Giant
anteater

Neq. 27481

113



114-
Giant Anteater



Neq. 2448

114



115-

Monkeys in cage

Neq. 27482

115



116-

Anteater
(just born)

Neq. 27483

116



117- young Terns

Neg. 27484

117



118-
Buenos Aires

Neg. 27485

118



119-
The S. S. Paraguay
on which the
Expedition
ascended the
Paraguay

Neg. 27486

119

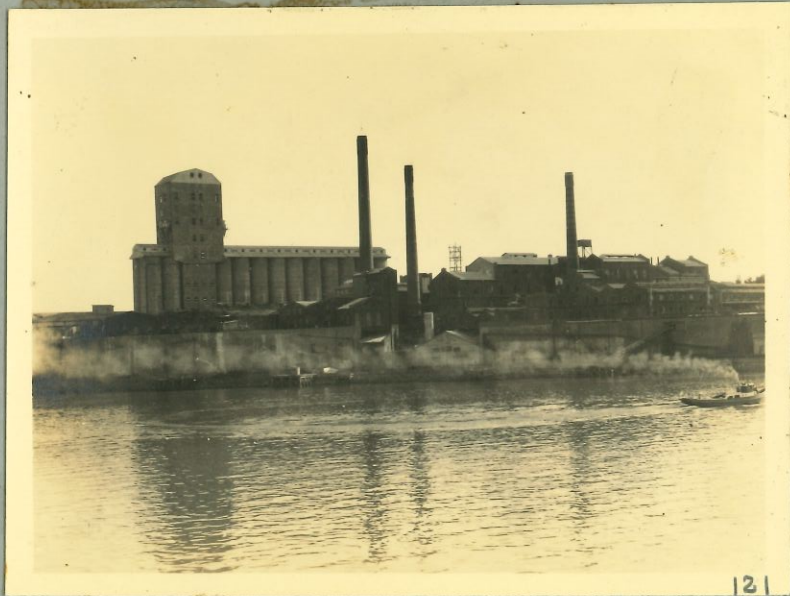


120 Buenos Aires

Neg. 27487

120

DD



121-

Buenos Aires

Neg. 27488

121

DDA



122-

Buenos Aires

Neg. 27489

122

DDB