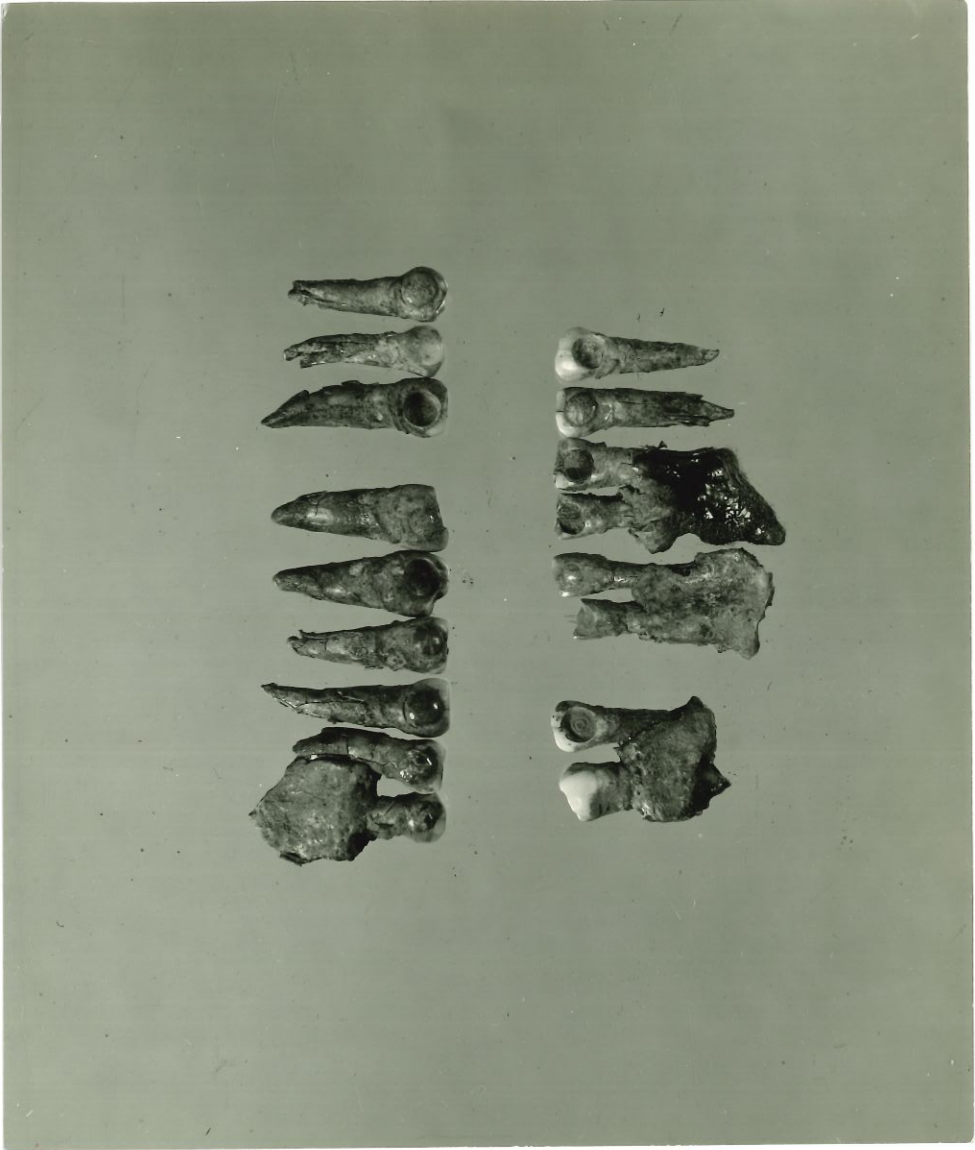


Piedmont Keys

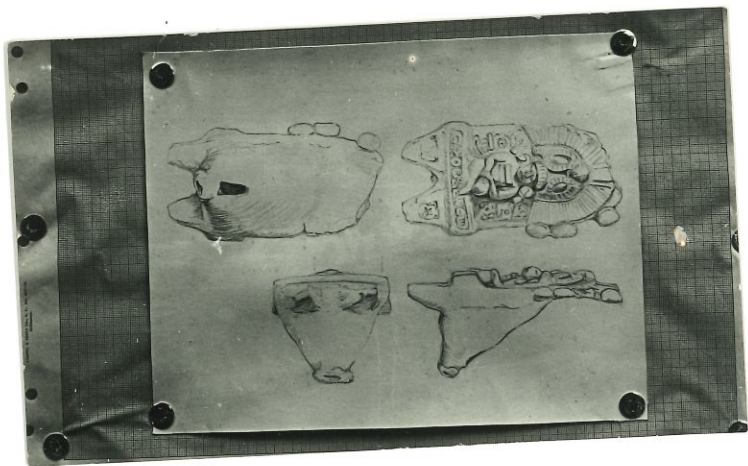
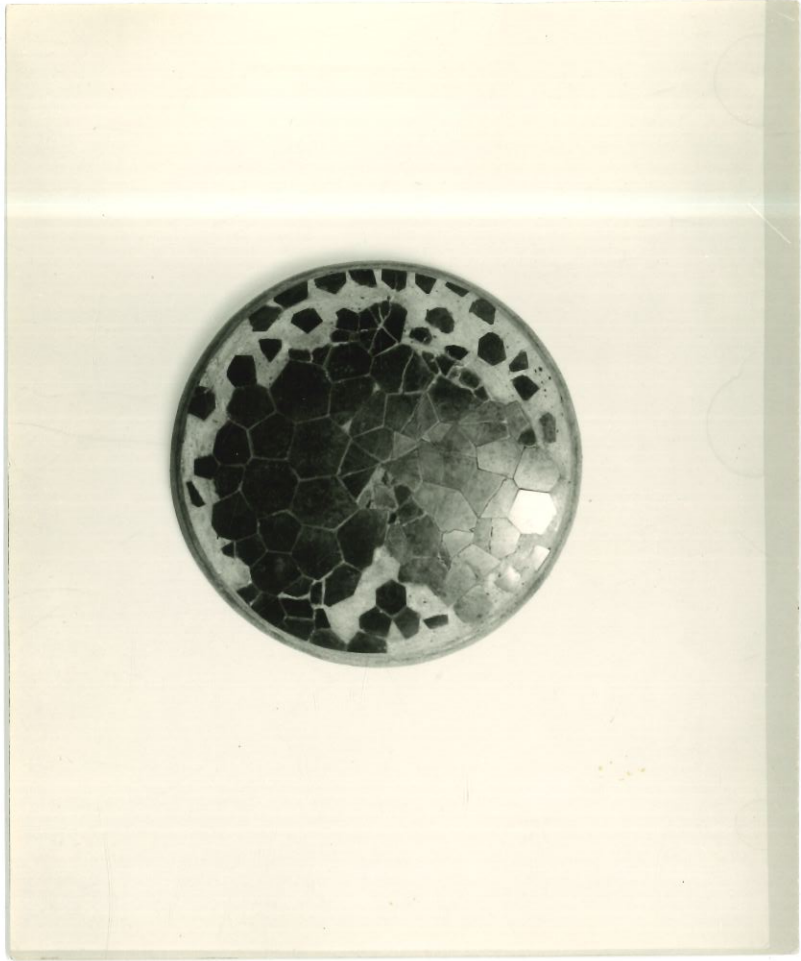
Florida



Teeth from Piedras Negras

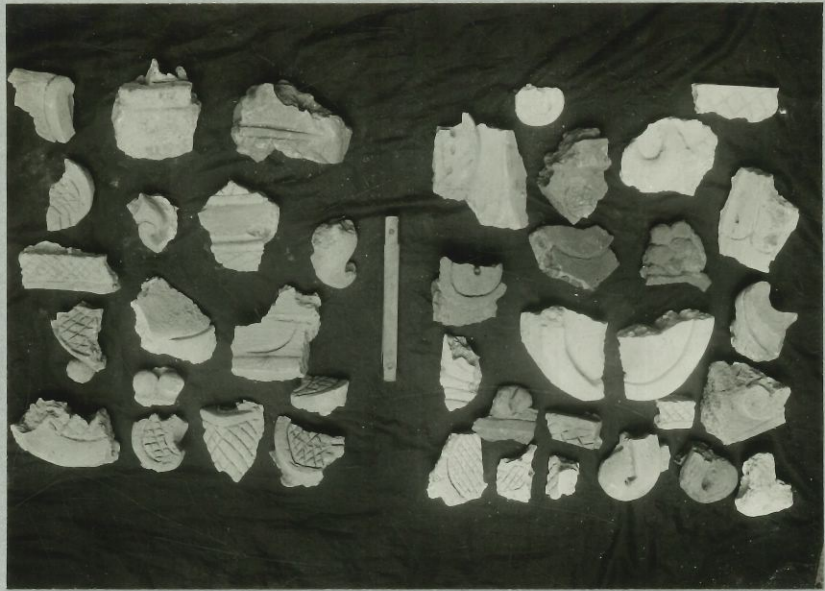


THE UNIVERSITY OF PENNSYLVANIA
PHILADELPHIA



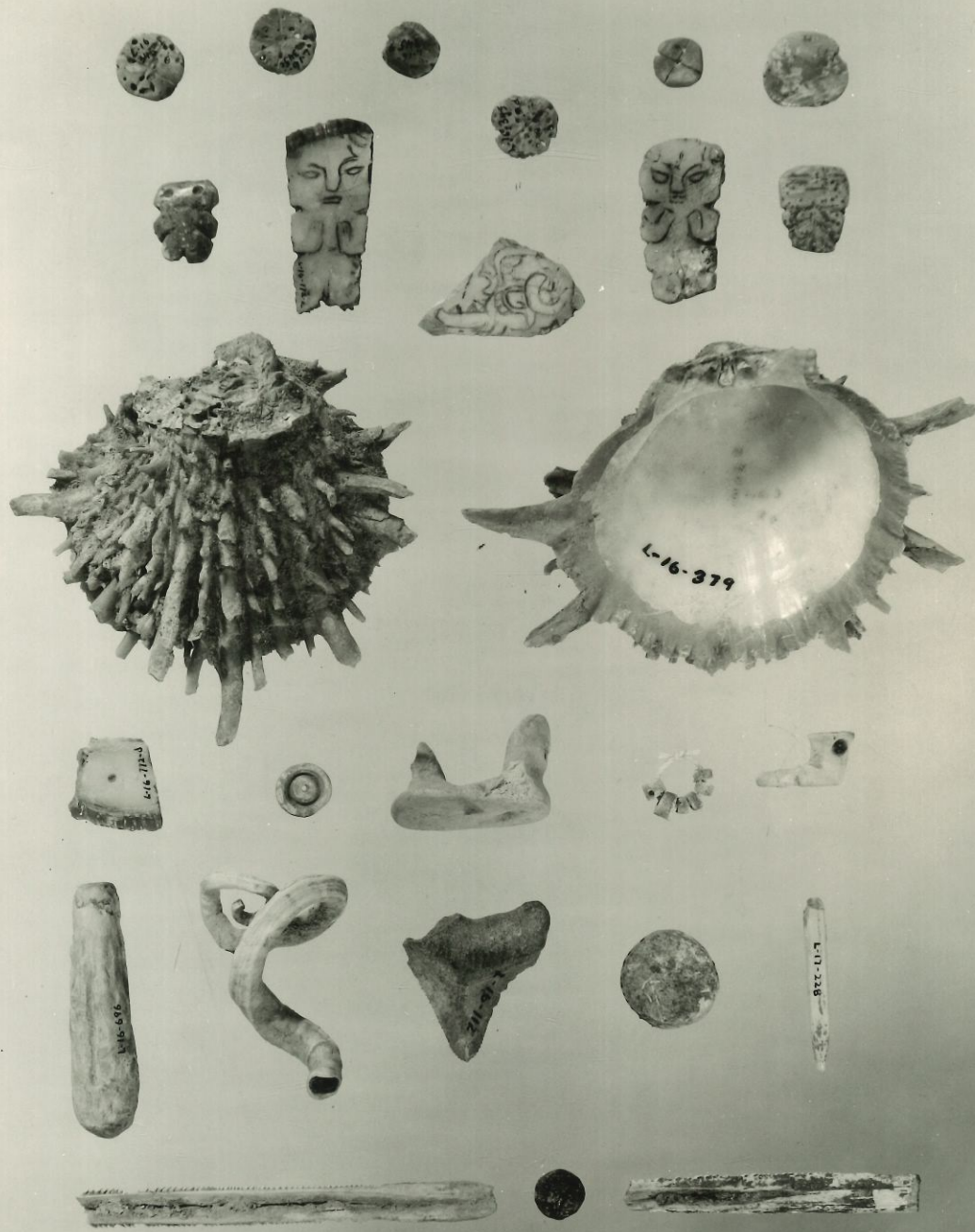


PN - BONE

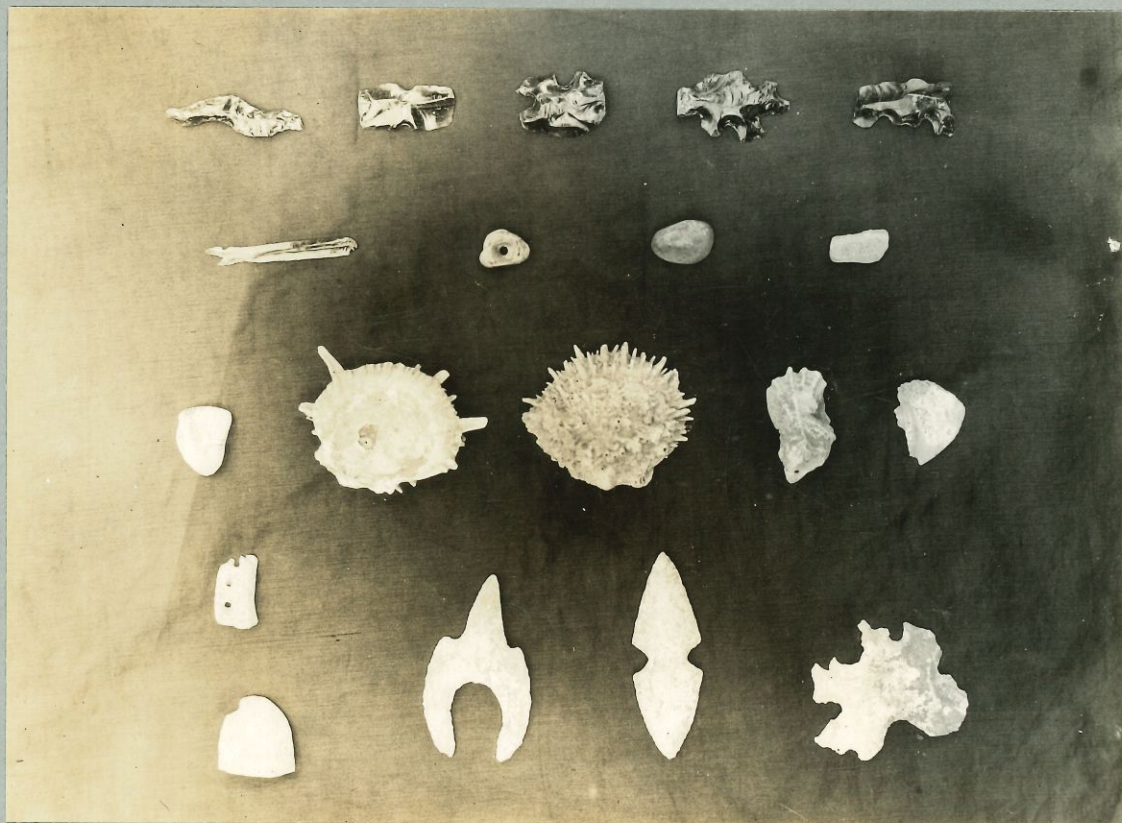
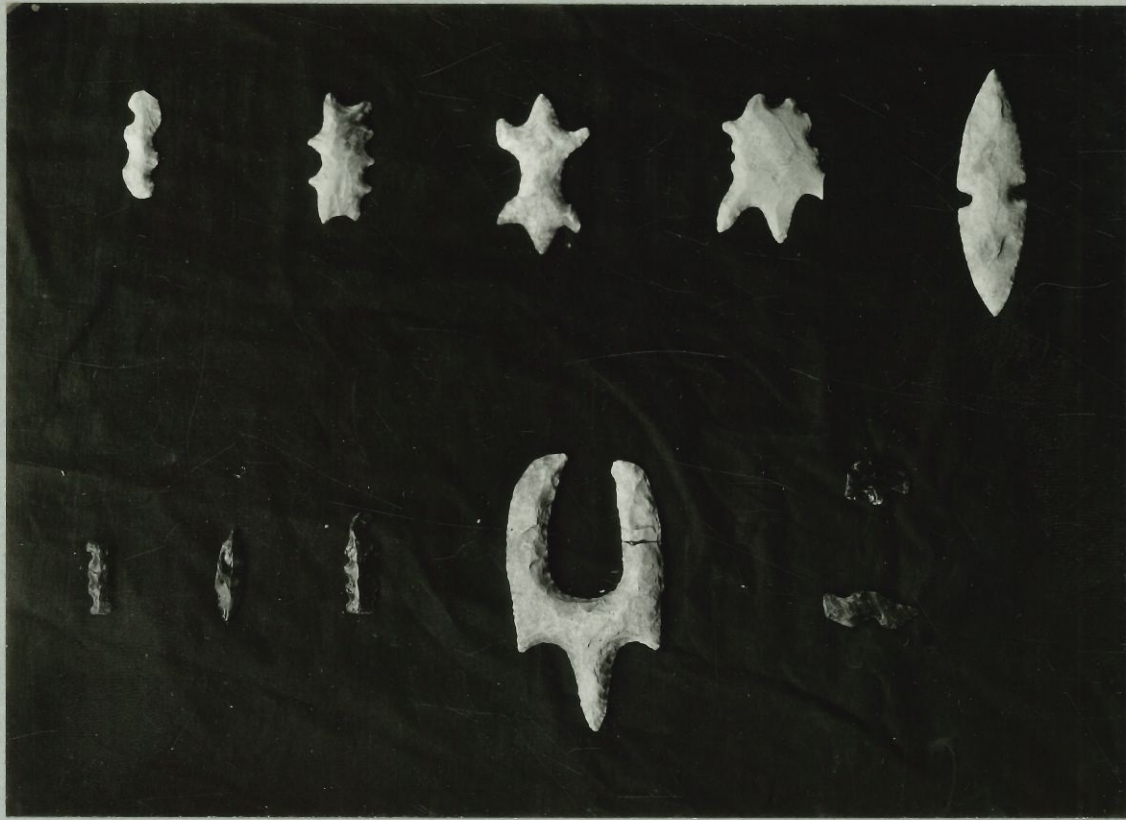


32-5-156

32-M-86



0 5 10



211

31-212



33-274

32-275

missing



33-276

✓ 33-274

Bur. 10

All of the objects recovered from the object-bearing level of the chamber (disregarding the niches) plus the only ornament from a niche (Niche 1) which is the last in the middle row; last and middle row are jade; lower row are shell except two at right, which are bird claws.

33-275

Bur. 10

The jade head shown in 33-274, close up.
No. 8-15-2.

33-276

Bur. 10

The same jade head, reverse side, close up, showing four perforations for attachment, running from back to sides. Perforations are bi-conical.



33-238



33-240

33-241
missing

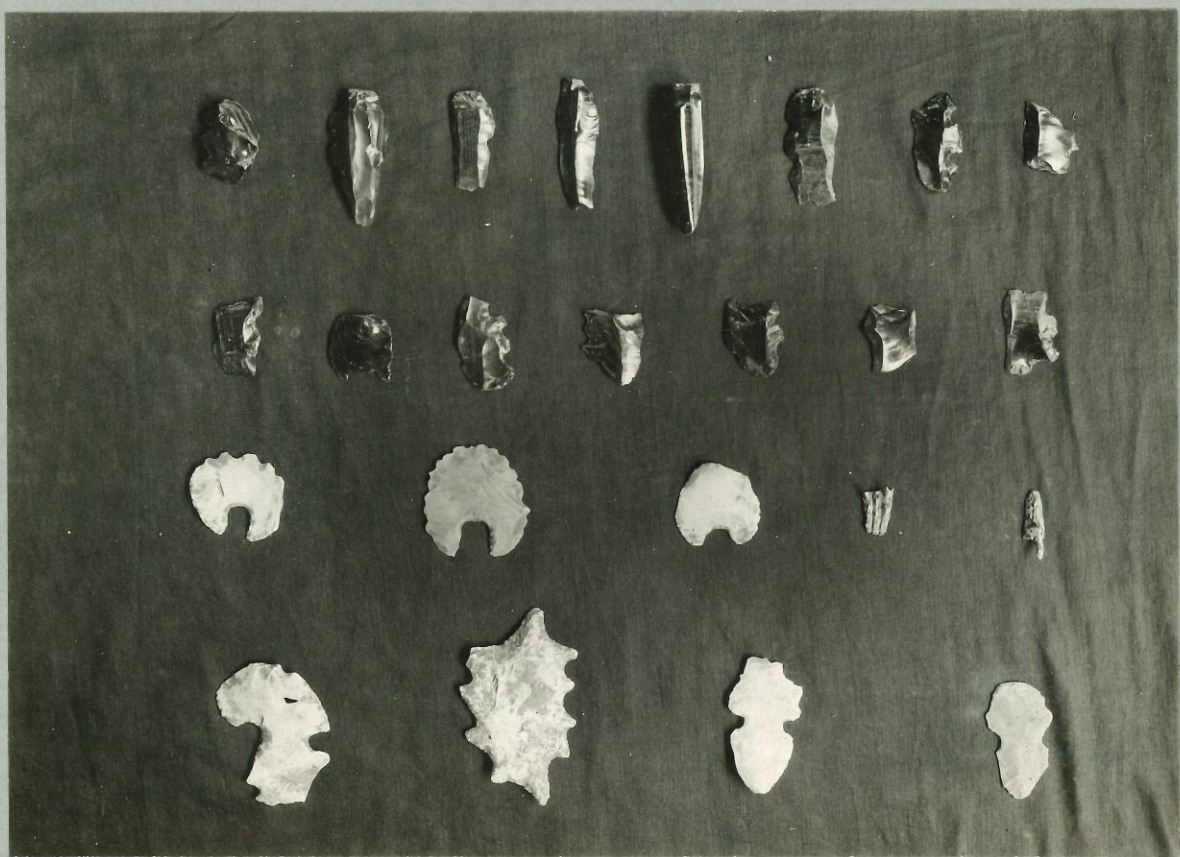
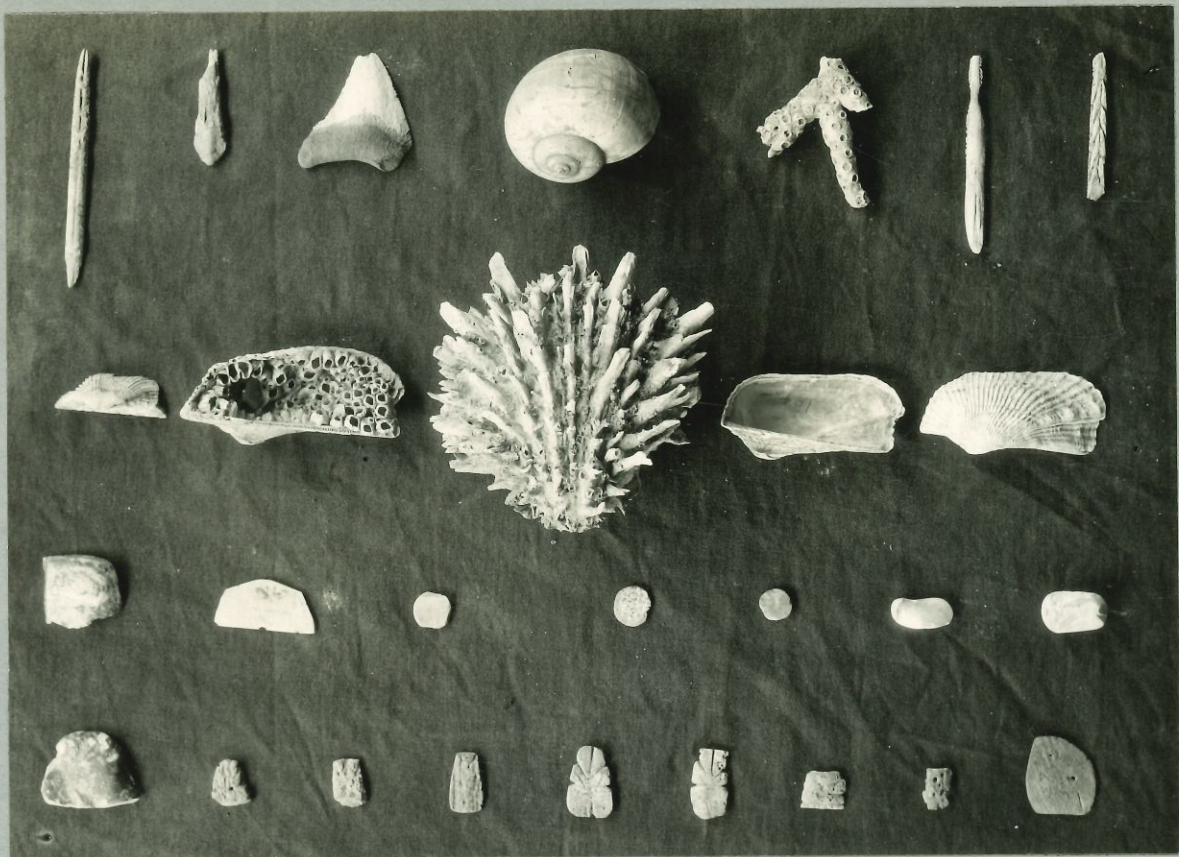
33-241

33-238 R-5 SE Stucco head (S-16-1, (sent to Guatemala)
in position under floor of Temple, R-5,
between rear door and left (NEly) front
door. Head and ruler lie on stones of
pure rock fill below.

33-239 See 33-241

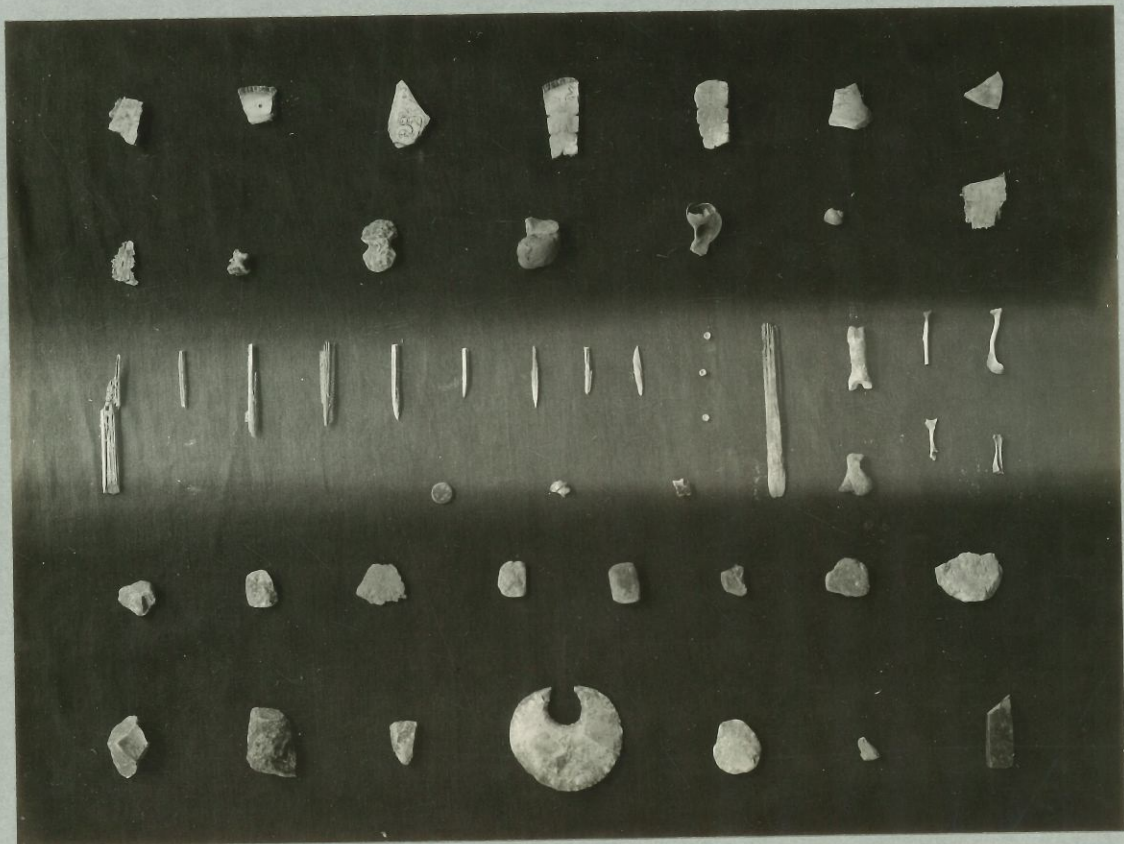
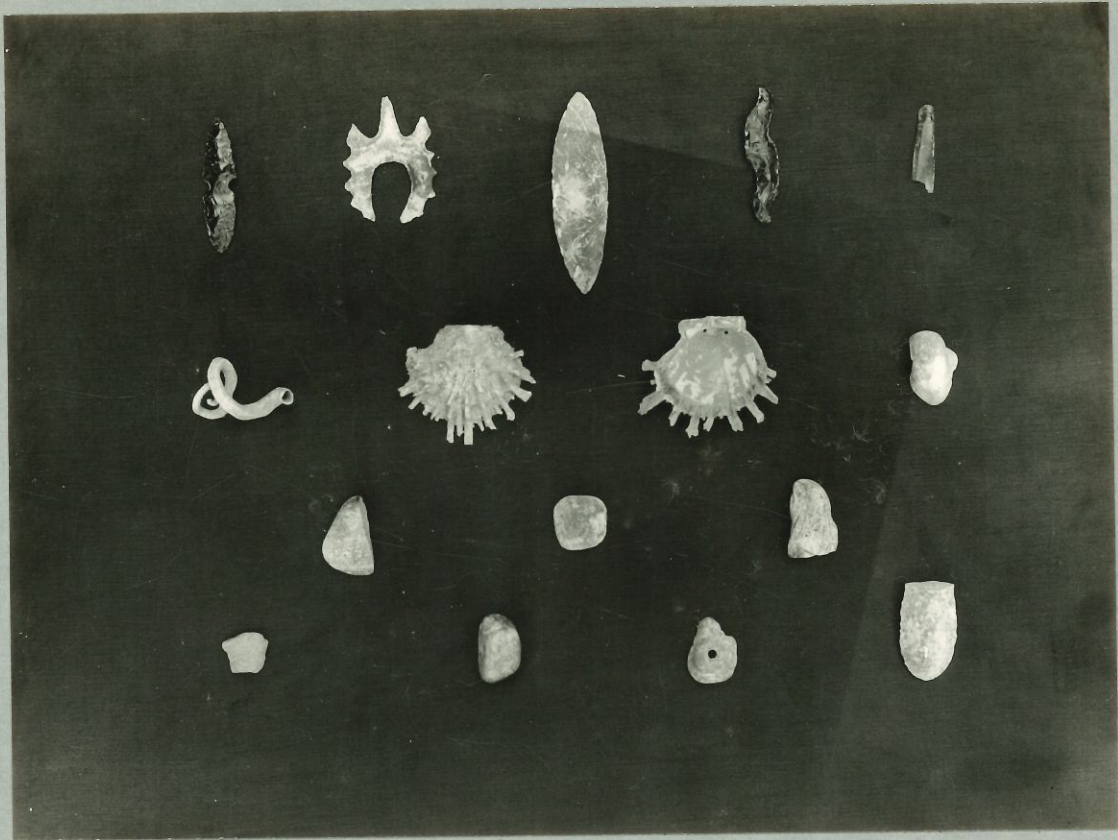
33-240 R-5 Stucco head S-16-1, as restored in filed,
front view, left side of head only has
been cleaned.

33-241 R-5 Same view of S-16-1, more light. Note
the secondary coat of thin stucco (red
painted) on the uncleaned right side of
face.



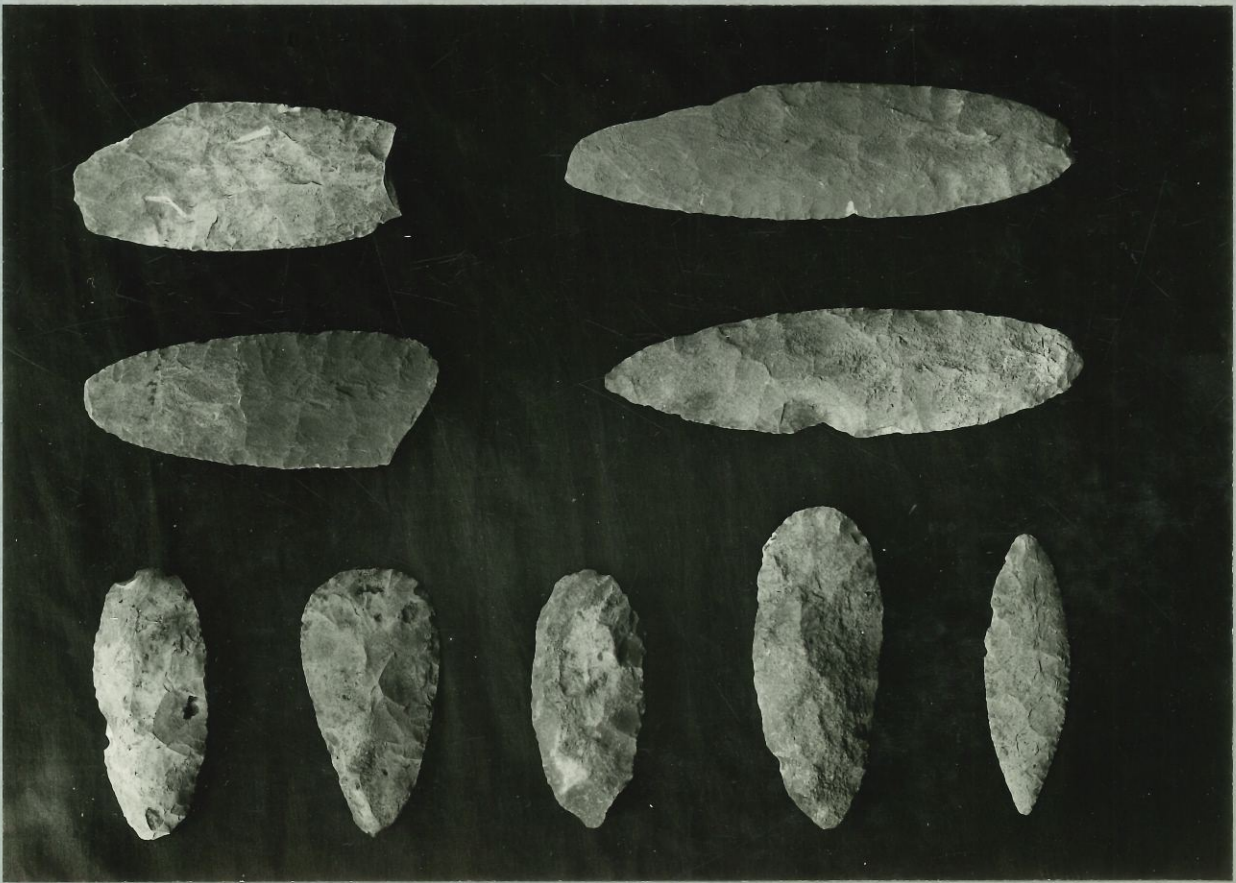
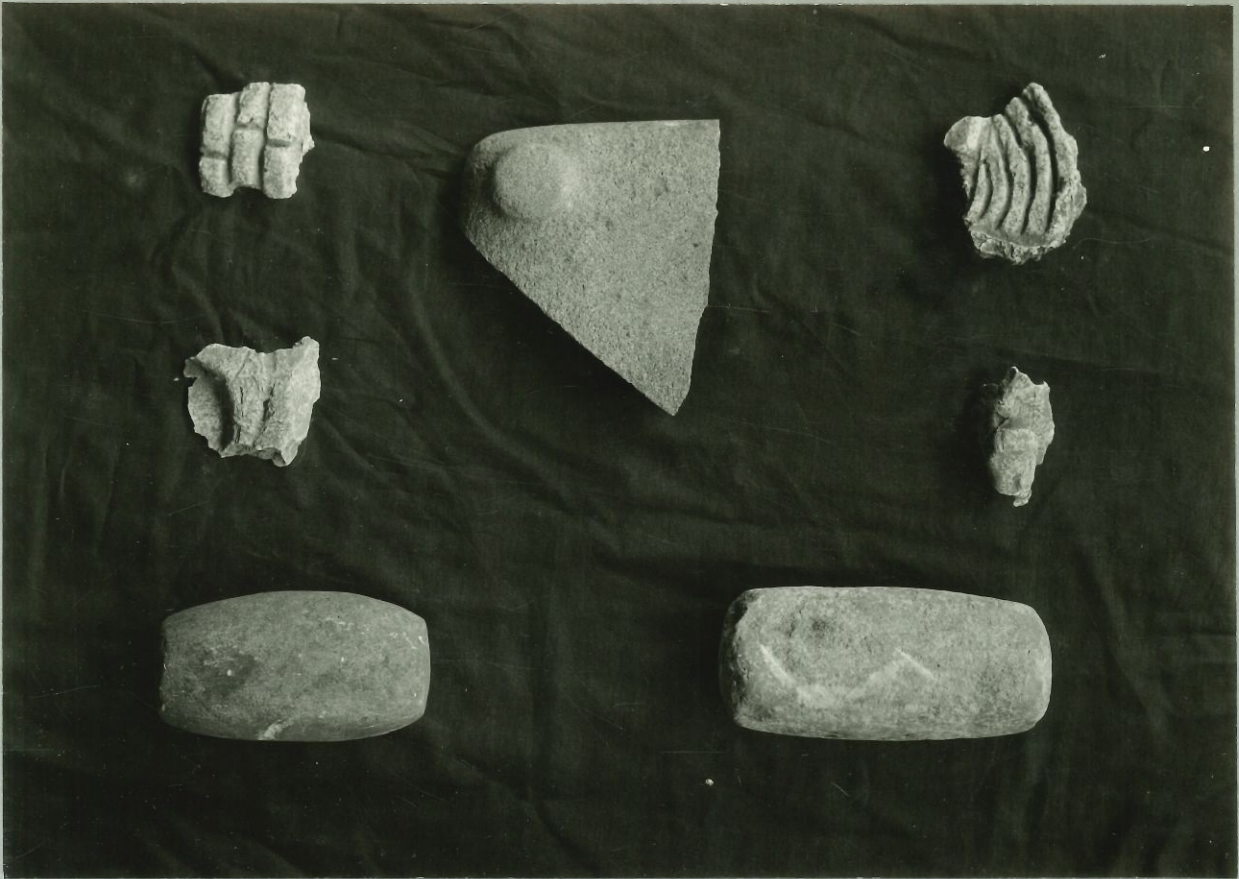
31-325

31-209



213

210



221

222

208

32-M-142



Shells
Bu S

32-M-89

15951