

PIEDRAS NEGRAS GUAT.
CARNEGIE INST, MORLEY



13
Albr
2



21-5-105

altar 2, general view

29-2-47

" 2³, front

PIEDRAS NEGRAS GUAT.
CARNEGIE INST MEXICO



21-5-106

Atlas 2, I.S. or front

29-2-45

" 2, front

PIEDRAS NEGRAS GUAT.
CARNEGIE INST, MORLEY



21-5-109

altos 2, support no. 3

31-3-206

" 2, ~~4~~ heterotypic support #3

PIEDRAS NEGRAS GUAT.
CARNEGIE INST. MORLEY



154
7A



154
7B

31-3-202

Altas 2, 1st hieroglyphic support

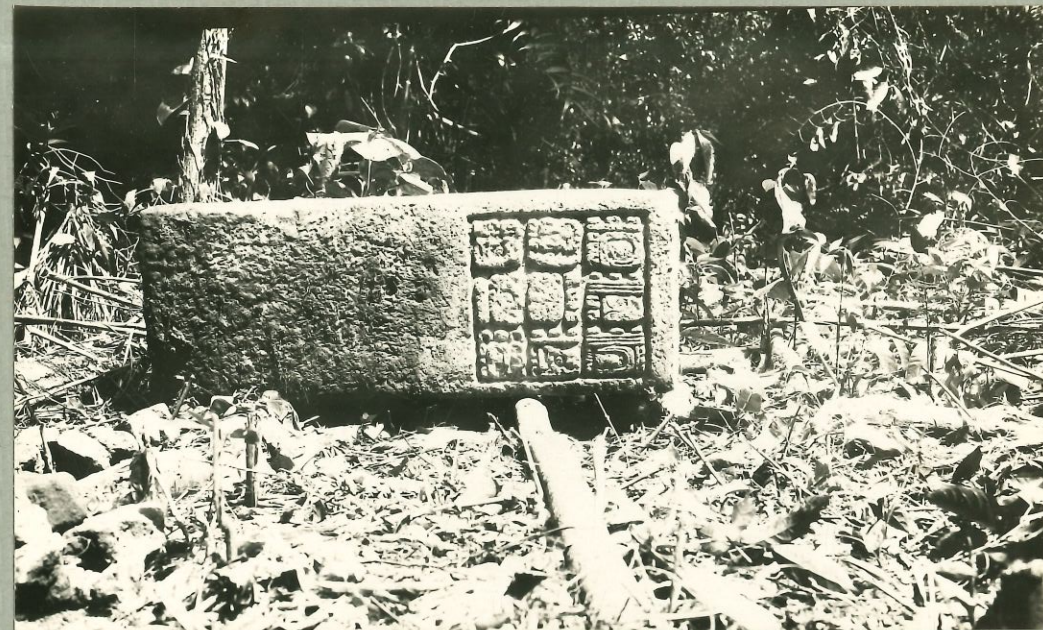
21-5-110

" 2, support no. 4

PIEDRAS NEGRAS GUAT.
CARNEGIE INST, MORLEY



51-2-101



242

21-5-107
altos 2,
sufford 20.1

31-3-203 altos 2, ~~2~~ hieroglyphic sufford #1

31-3-204 altos 2, " " " #1

PIEDRAS NEGRAS GUAT.
CARNEGIE INST, MORLEY,



51-2-108

31-3-205

21-5-108

Atlas 2, 3rd / hieroglyphic supports #
" 2, support no. 2

PIEDRAS NEGRAS GUAT.
CARNEGIE INST, MORLEY



Altar
2 3



29-2-49 actor 3, close up of I.S.

29-2-50 " 3, " " " " "

PIEDRAS NEGRAS QUAT.
CARNEGIE INST, MORLEY



Altar
3 4



29-2-51 Altar 4, showing joint

29-2-53 " 4, corner showing I.S.

PIEDRAS NEGRAS GUAT.
CARNEGIE INST, MORLEY



21-5-111 Atlas 4, general view

PIEDRAS NEGRAS GUAT.
CARNEGIE INST, MORLEY



Lintel
5
Lintel
7



31-3-193

Sintel 5

31-3-196

" 7

PIEDRAS NEGRAS GUAT.
CARNEGIE INST, MORLEY



31-2-77 Sintel →, Structure 42

31-2-77 " ↑, close up of I.S. Structure 42