



33-281



33-280

33-280

Entire personel, Apr. 14, 1933.

33-281

Moving house.



240929

A



B



C

Negatives of David Anson, Jr.  
A

Piedras Negras Exped.  
Guatemala,  
1932.

- A David Anson - Fred Parms 240929  
B Tenosigue  
C Piedras Negras camp after conflagration.

Piedras Negras  
+  
Tenosigue, Tot., Mexico



15978

32-11-116  
15978

SEE: MARY BUTLER LEWIS PAPERS -  
PHOTO ALBUM  
FOR IDENTIFICATIONS OF INDIVIDUALS



'31-115

133

187

330



332

32-M-134

31-75



111

337

32-M-131

339



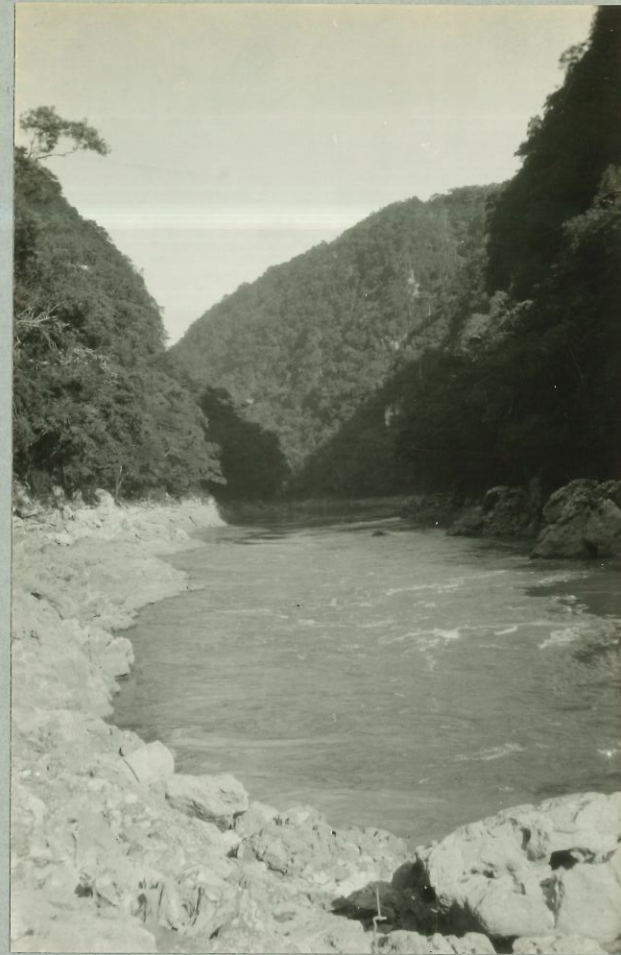
333

344

345

4

✓



343

342

340

341



165

164

338

163



Museum '31-56

'31-85

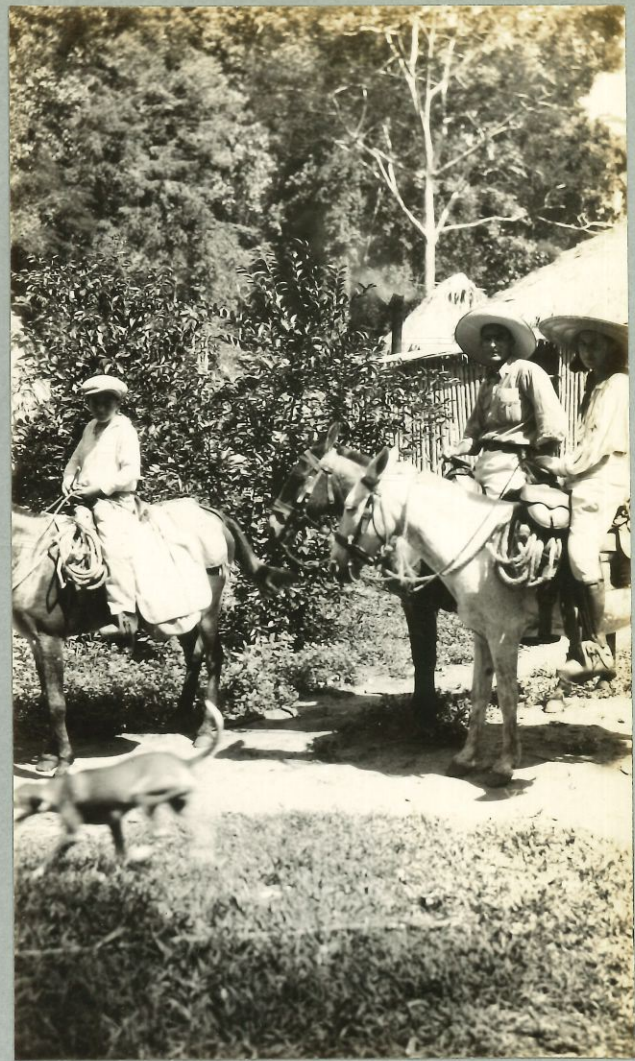


183

'31-110

'31-109

M-32-105

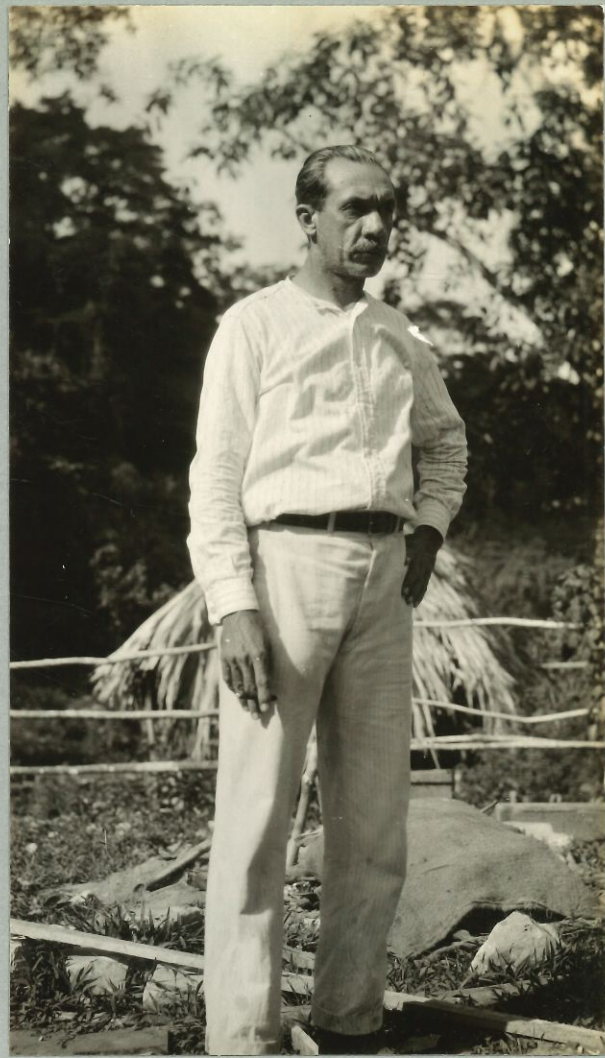
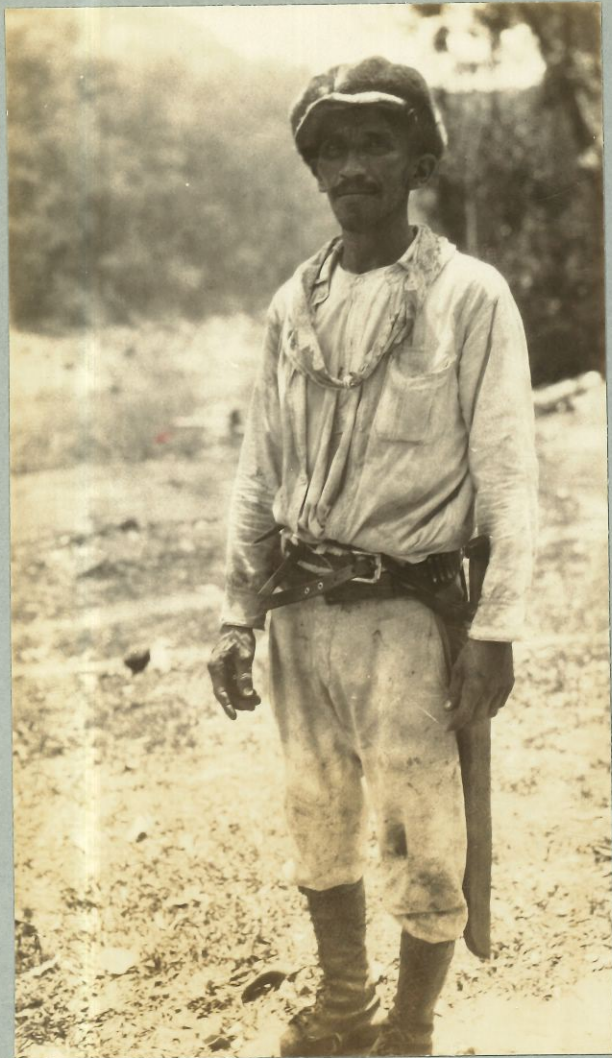


M-32-113

M-32-106

M-32-112

M-32-111



M-32-107

32-M-107

181

180



'31-106

'31-105

103

107



S-2

S-1

32-5-109

S-3