



39-411

PN 39-411
37829



39-4/2

PN 39-425

37829



39-412



39-413

P0139-413
37831



39-413

PN39-413
37831



39-414

PN 39-414
37832



39-414

PH 39-414

37832



39-415

PN39-415
37833



39-4/15

PN39-415
37833



39-416

DN39-416
37834



39-416

PN39-416
37834



39-416

PH 39-416
37834



39-416



39-417 10

PN39-417
37835



39-417 10

PN 39-417
37835



39-417 10



39-418 4211-75

PN39-918
37836



39-418 ~~1871-72~~

PH 39-458

37836



39-419. 1-

PN39-419
37837



39-419.

PN 39-419
37837



39-420

PN 39-420
37838



39-420

PN 39-420
37838



PN39-421

37839



39421

PN 39-421
37839



39-422

PN 39-422
37840



39-422

PN39-422
37840



39-423

PN39-423
37841



39-423

PN39-423
37891



PN301-424a
37842



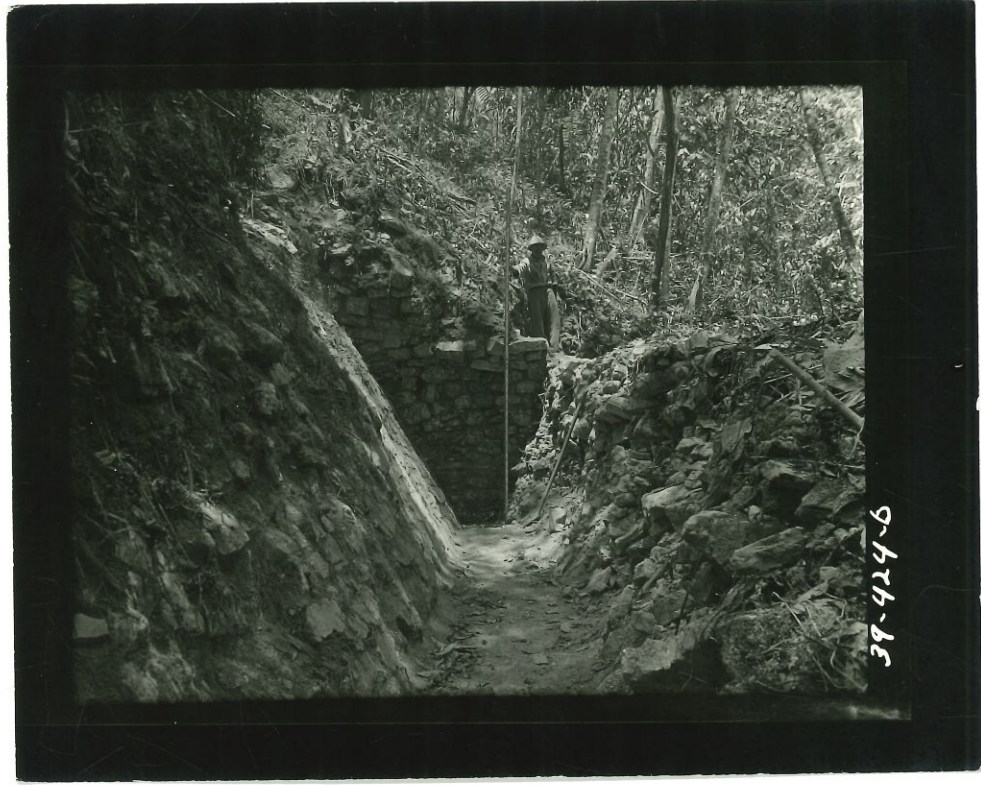
PN39-424a
37892



39-424-a 5'



PN 39-424b
37843



39-424-6

PN 39-1296
37843



39-424-6



39-425

—ИМТЭД—ИЛЛТИИ—КОДАК

JBC

PN 39-425
37844



39-425
— СТАРТИН — КОДЫК
— ИЛЪЯТЪ — ИЛЪЯТЪ — ИЛЪЯТЪ —

39-425

PN 39-425
37844

2



39-426 1

PN 39-426
37845

2



39-426 1

FN 39-426
37895



18
KADOK — СТАРТИН — ИАМТЗА.

39-427

PN 39-427
37846



39-427

ЭТЛИВИ — ИИРЬУГЕ — КОДЫК — ИАНТГА — ИВС

PN 39-427

37846



4

PN 39-428
- 3752
- 334
- 30817



39-428 9

PN 39-428
37846



39-428 9

JN 39-528

32847



39-429 10

PN 39-429
37848



39-429 10

PN39-429
37848



> 39-430 +

PN39-430
37849



39-430 4

PN39-430
37849



> 39-430 +



29-431

6

PN39-431

37850

39-432



10

PNV39-432
37851



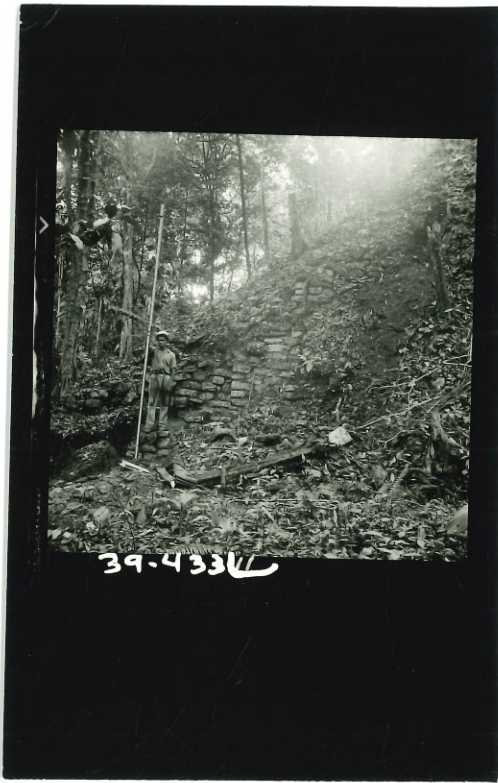
39-432

10

PN 39432
37857



PN39-433
37852



DN 39-433
37852



39-434 12

PN39-434.
37853



39-434 12

PN 39-434
37853



39-435

PN39-435
37854



39-435

PN 39-435

37854



39-436

PA 39-436
37855



39-436

PN 39-436
37855



PN 39-437
37856



PN 39-437
37856



PN39-438
37857



PN 39-438
37857



39-439

JN 39-439

37858



39-439

PN 39-439
37858



39-439

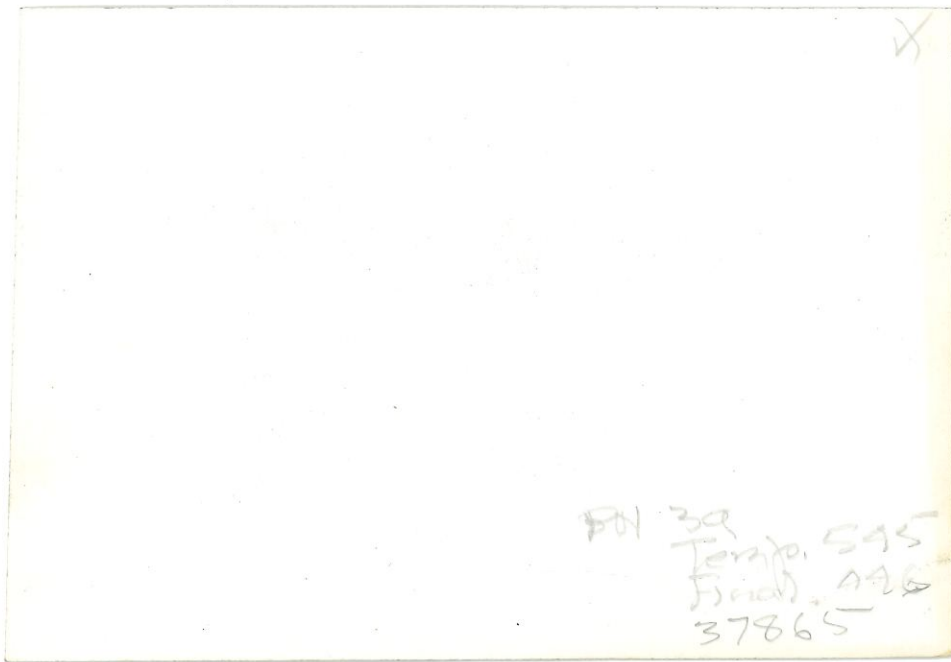


PN 39-443



PN 39-443





PN 39
Temp. 545
Ficial. 496
37865



1911
KABON - TITAH M. S. W. N. T. A.

Richard Nelson
Seattle, Wash.

PW 39-447
37536



39-451

39-451

Report

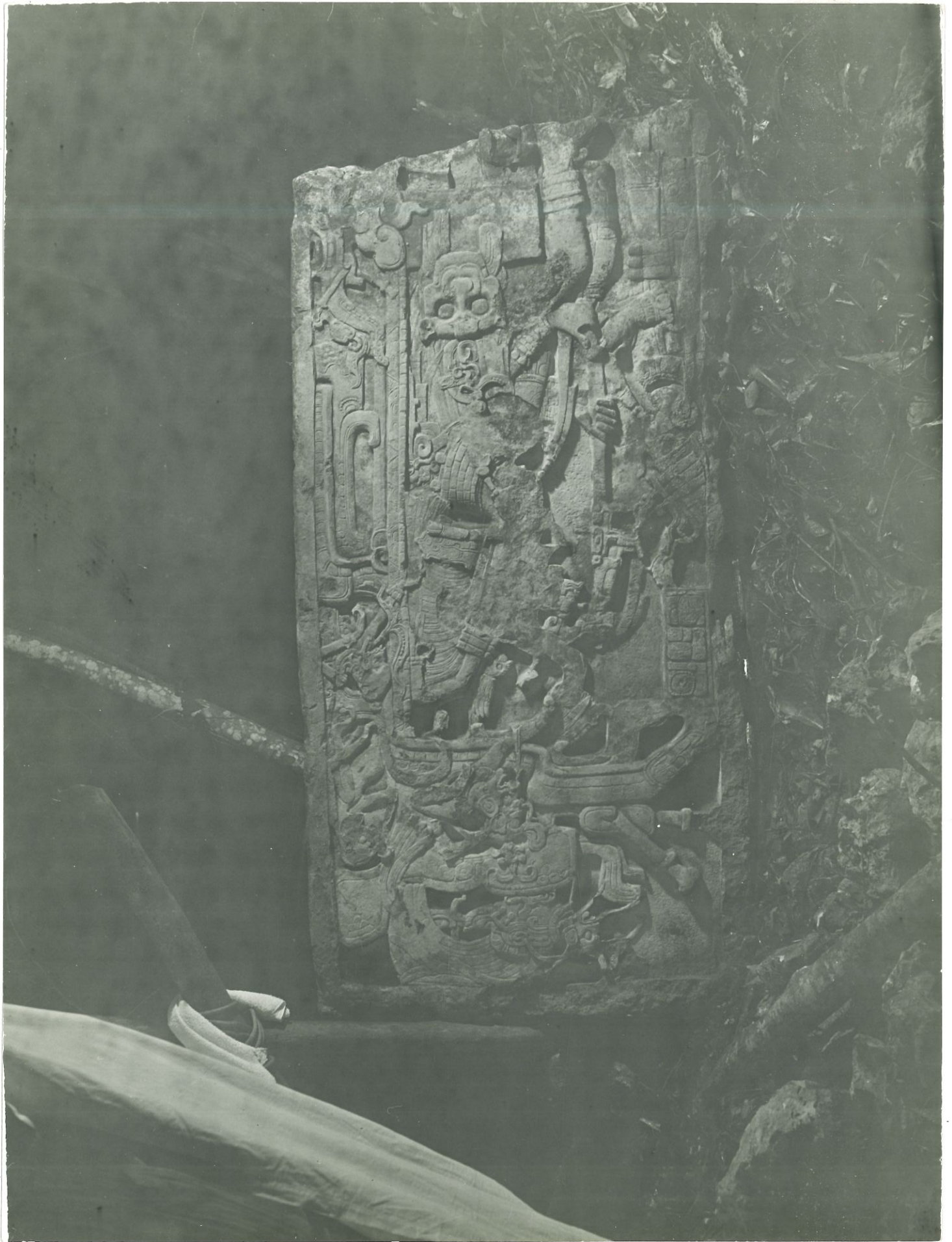
Medras
Medras

Sethuram



PN 39-451

Stela 3



37875

456

5-5 5-2



Stela 5^a

PN 39

Temp.
Final

5467
4573

37876

Stela 1



PN 39-468

37887



PN 39

Stella II

Temp. 520

Final 168

37887



Stela 25 - FN 39
Temp. 542
Final 472
37891



H 12



H73



Stela 25

PN 39
Temp. 58A
Final 473
37892



Stela 25

PN 39
Tempa 584
Rinds 473

37892



Stela 25

PN 39

Temp. 58A
Final 473

37892



474

NEG 37893

PN39-474



475



2176



477



H78



479



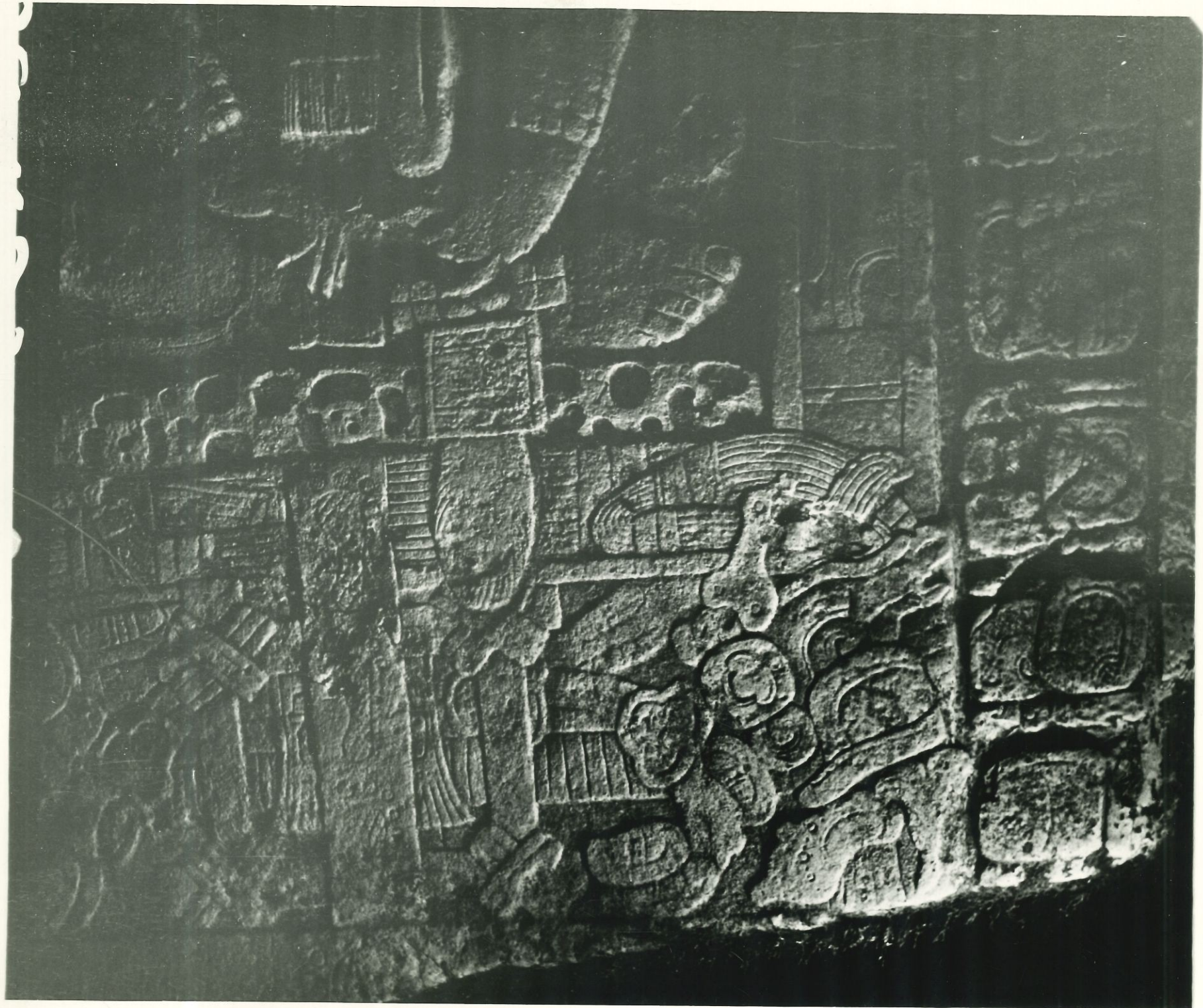
480



184



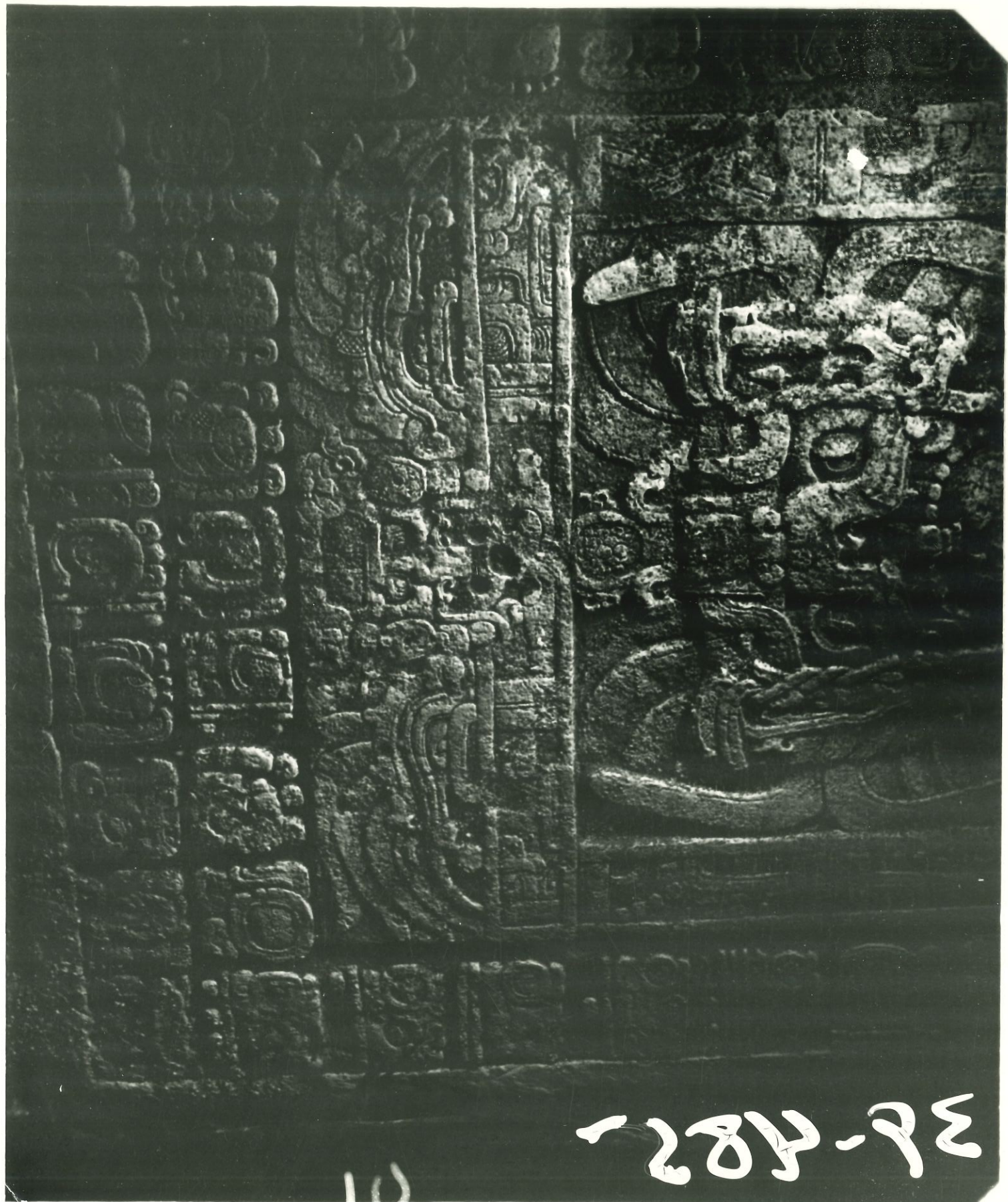
482



483



H8H



36-582

10

H85

neg. # 54-14253A