



214

PN 39-214
37631



39-211

PN 39-211
37628



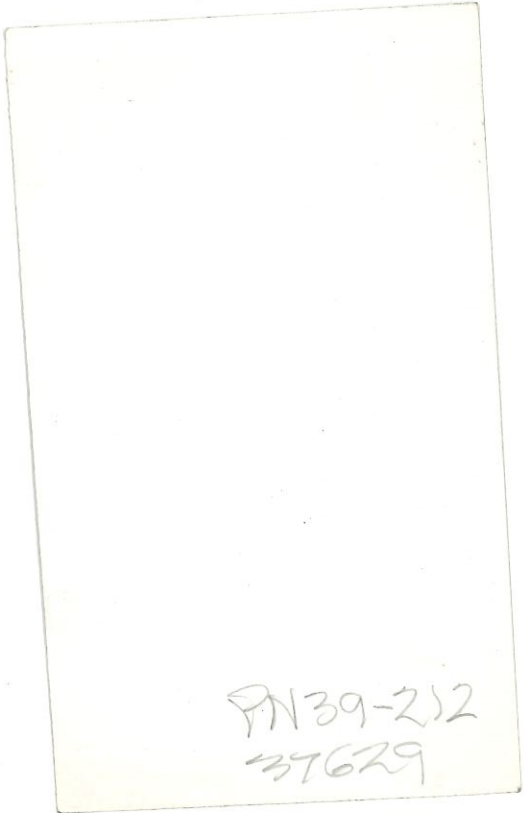
39-211

PN 39-211

37628



39-212



PN39-212
37629



39-2/2

PN 39-252
37629



39-213

PN39-213
37630



39-213

PN 39-253
31630





PN 39-215
37632



PN 39-216
37633



39-218⁵

PN39-218
37C35



39-219 56

PN39-2A
37636



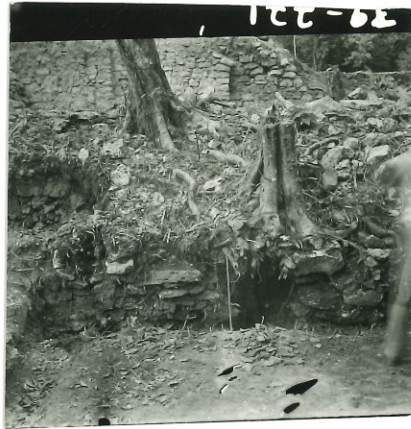
39-220 B4

PN39-220
37637



39-220 B1

PN39-220
37637



PN39-221
37638



39-222

PX39-222

37639



PN39-22A
376A1



PN 39-225
37642



JBC

ALBANY KODAK

39-225

PN 39-225
37642



39-226 1

PN 39-226
37643



39-226 1

PN39-226
57643



39-227

PN39-227
37644



39-227

PN39-227
37644



39-227



39-228

PH 39-228
37645



39-228

PN 39-228

37645



PN39-229
37646



39-229

PN 39-229
37646



39-230

PN39-230
3767



PN39-230
37647



39-231

PN 39-231
37648



39-231

PH 39-231
37648



39-232

PN39-232
37649



39-232

PN 39-232
37649



x

PN 39
Temp. 233
- Final 59
37476



39-59

233

2

PN39-59
37476



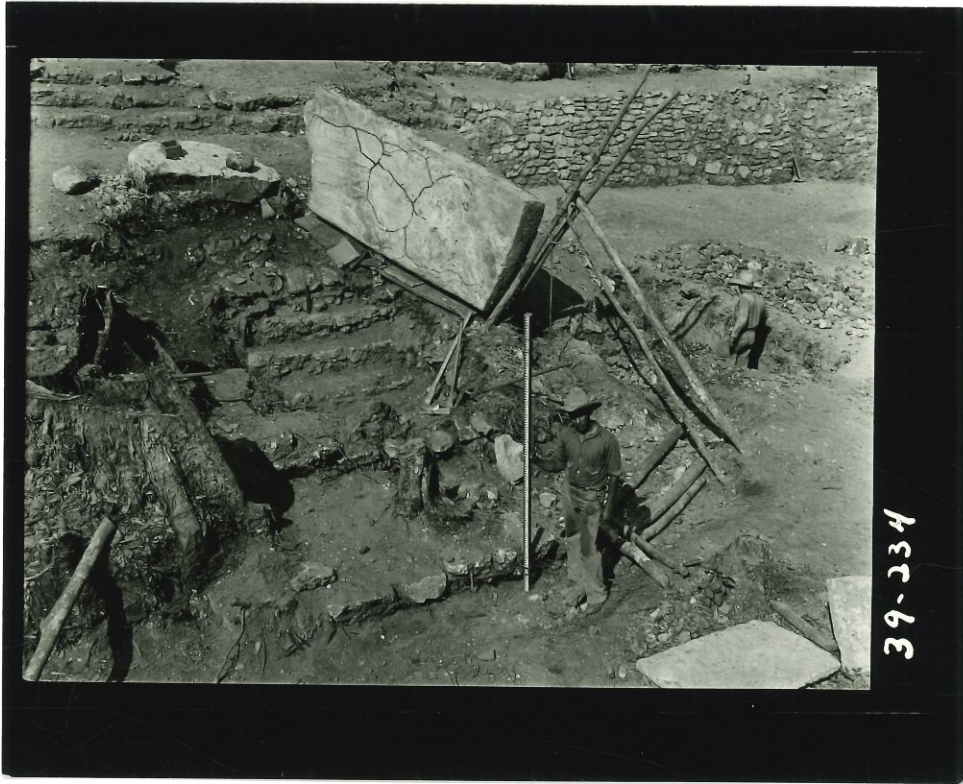
39-233

PN 39-233
37650



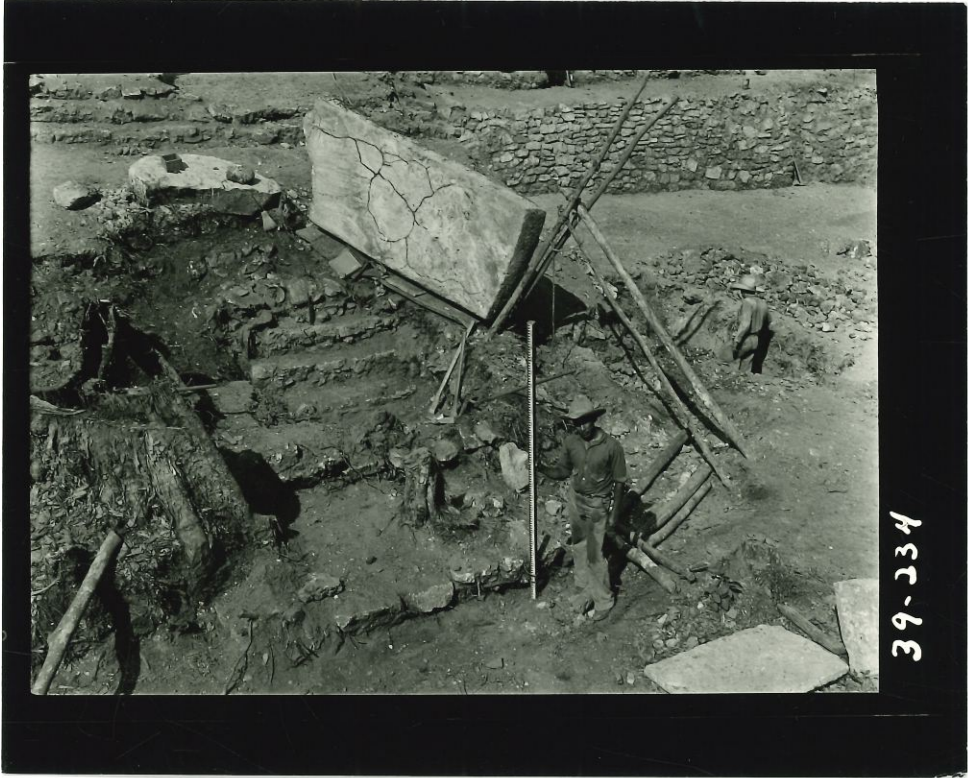
39-233

PA 39-233
37650



39-234

PN 39-234
37651



39-234

PN39-23A
37657



39-235 5

PN39-235
37657



39-235 5

PN 39-235
37652



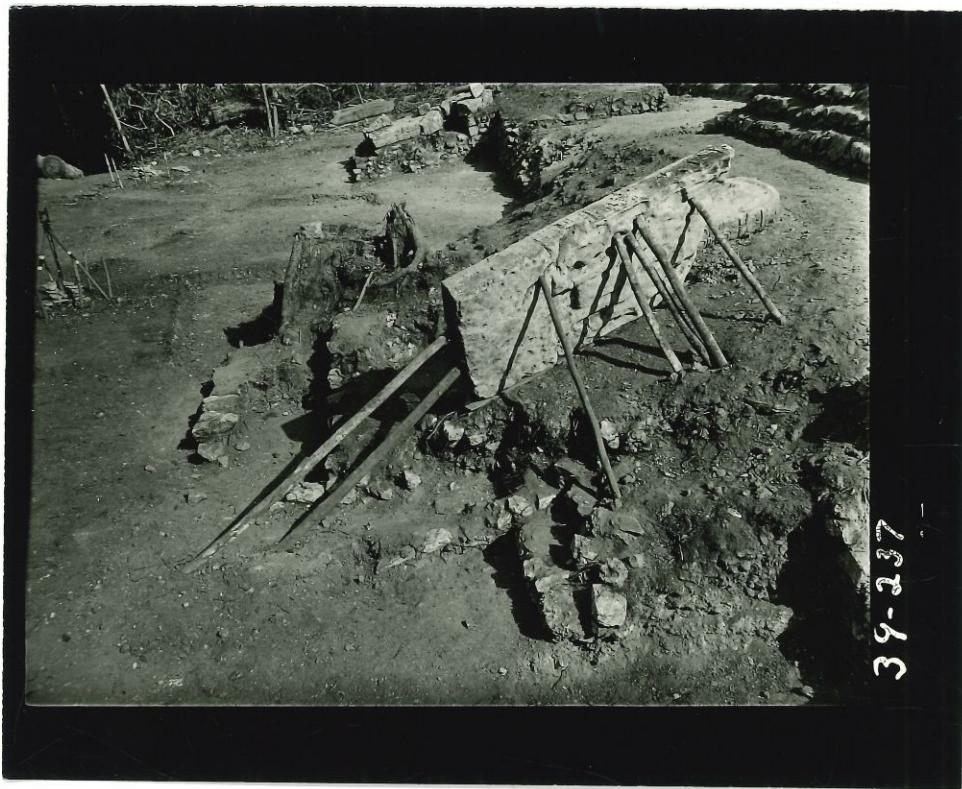
39-236

PN 39-236
37653

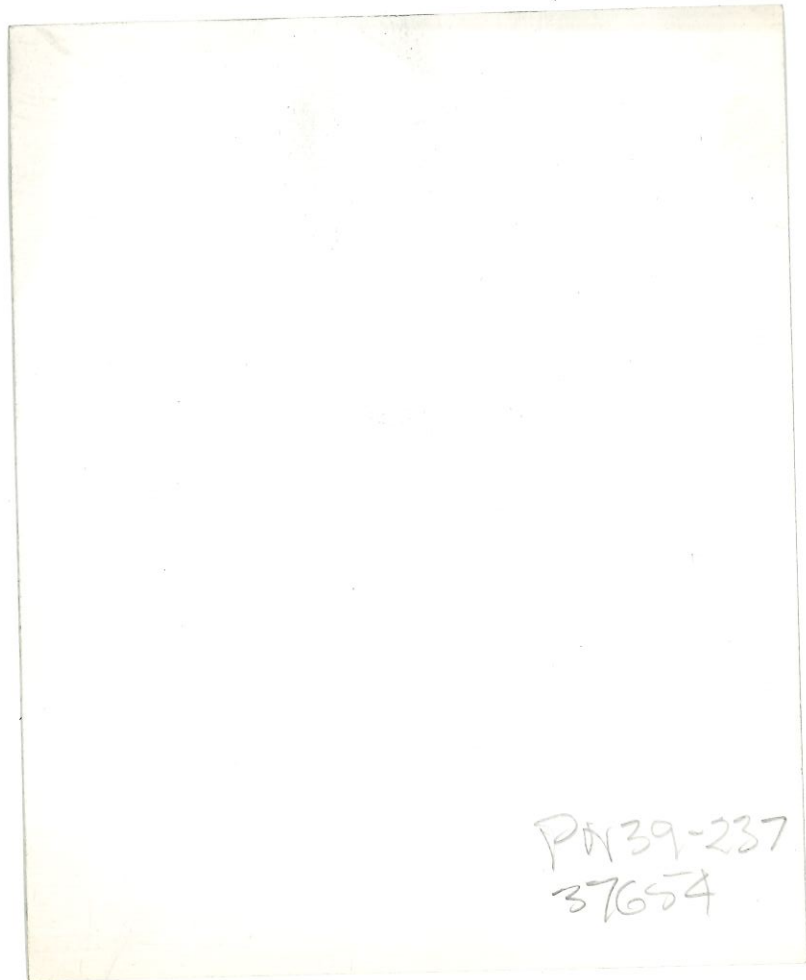


39-236

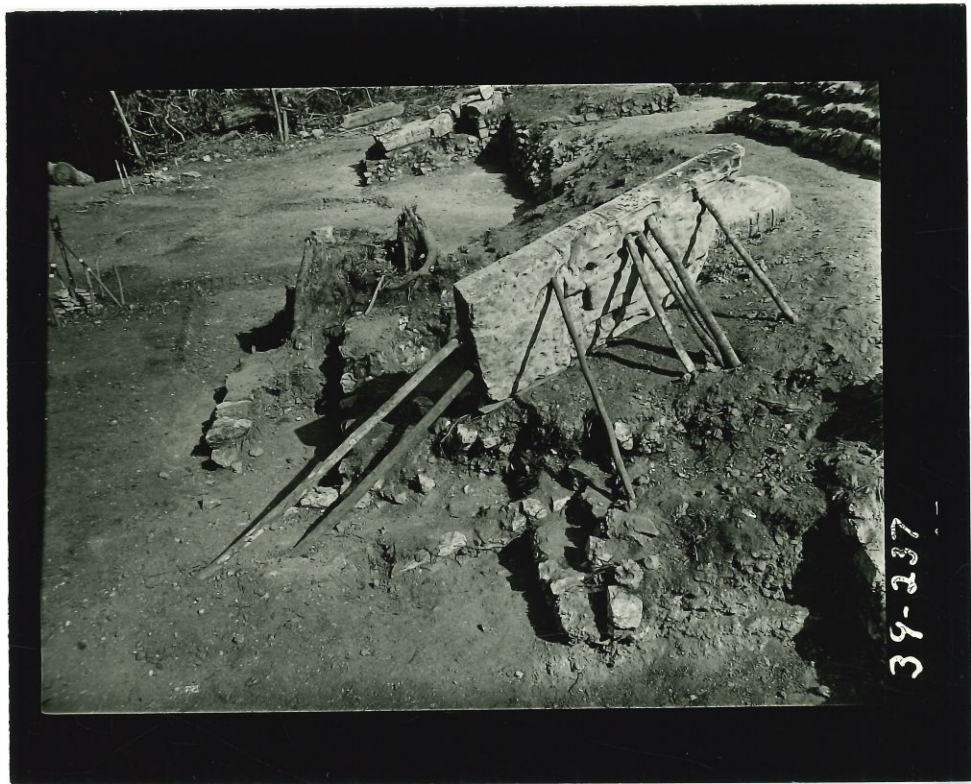
PA 39-236
37653



39-237



PA39-237
37654



39-237

PN39-257
37654



39-238

МАШИНА ИЛИ МАШИНА КОДЫК

182

PN39-23d
37655



39-238
XARXII-37AHTH-1AHTE

39-238

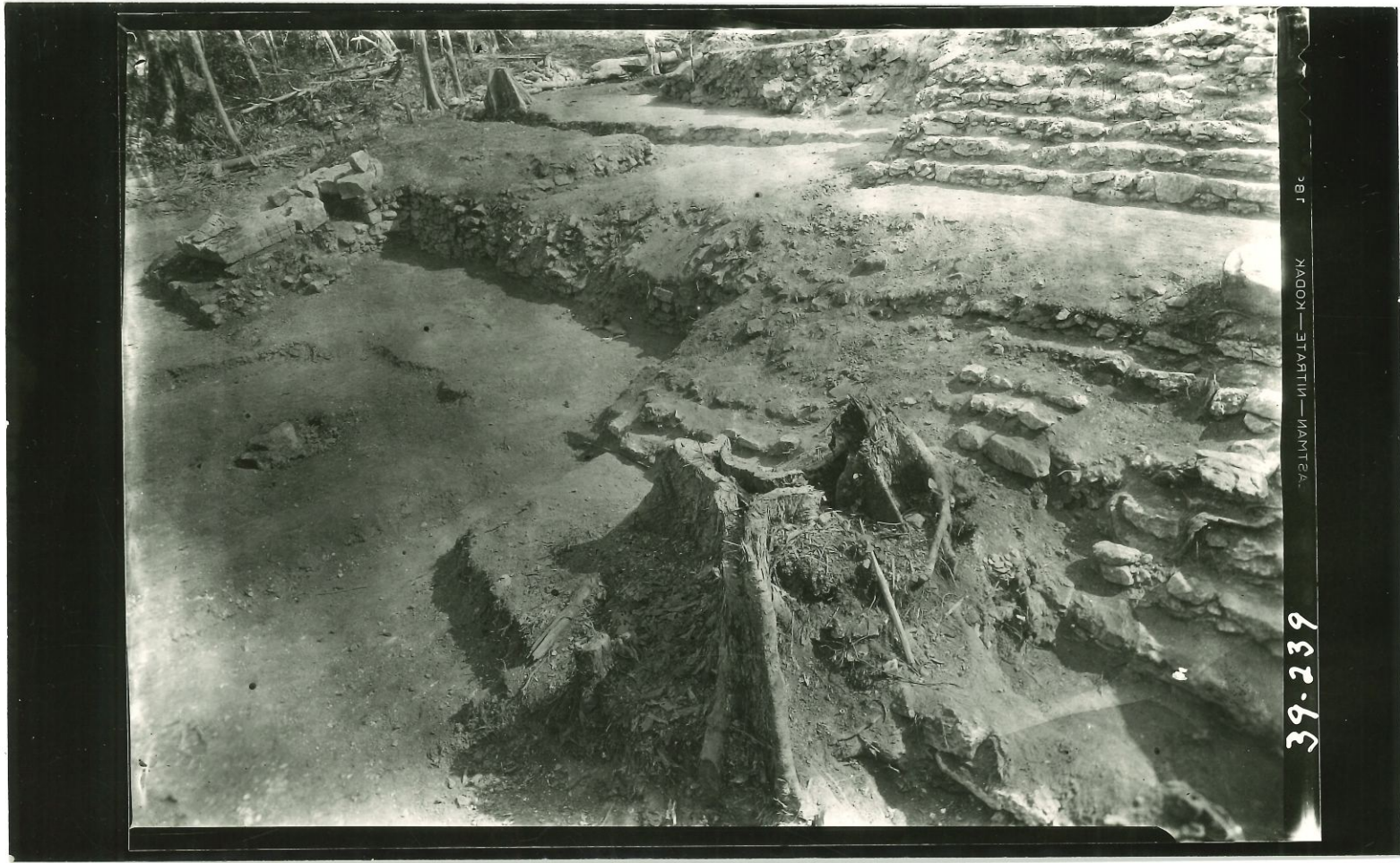
PN 39-238
37855



МАРШАЛ — СТАРТИН — НАМТГАЛ — ИЛБЭГ — КОДЫК

39-239

PN39-239
37656



КАДОК — СТАРТИИ — НАНТЕА
J B 2

39-239

PN39-239
37656



MUSEUM OF THE UNIVERSITY OF CHICAGO

39-340

PN 301-240
37657



39-340



PN 39-240
3765T