



PN 39-61
37478



62

PN39-62

37479



2

PN 39-62
37479



PN 39-65



PN 39-68



39-63

PN 39-63
47480



39-64

PA 39-64
37481



$4\frac{3}{8}$

Plate IV

2

80374

Fig



39-65

MAY 1965

PN 39-65
37482



38-98

40

PH 39-66
37483



PN39-66
37483



PN 39
Temp. 240
Kind 66
37483



00-PE

140

PN 39-66
37883



047

4
1939
Temp. 240
Kilns 66
37463



67

PN39-67
37484



67

PH 39-67
37484



36-98

242



PV39
Temp. 24.2
Final 66
37485



PN39-68
37485



PN 39-68
37485



4

PN 39

Tempo 242

Rindis 68

37485



PN 39-69
37466



PN 39-70
37487



39-71

PN39-25
37488



39-71

PO39-71
37488



PN39-72
37489



39-72

PK39-72
37489



6

39-73

PN39-73
37490



39-73

PN 39-73
37490



249

5

PN 39

Temp. 249?

Prod. 741

37491



10

249

39-74

PN39-7A
37491



249

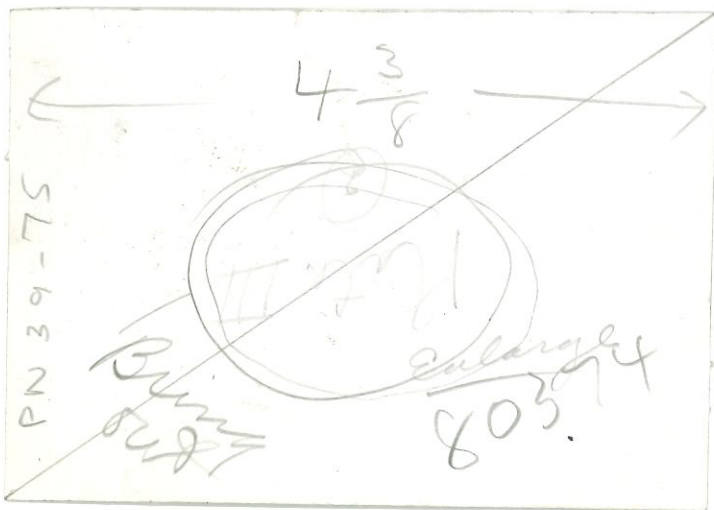
39-74

PN39-7A
37491



3T-7H







39-76

7

PN39-76
37493



39-76

7

PN39-76
37493



39-77

PN 39-77
3749A



PN 39-17
3749A



39.79

—MISVLE—KODAK

J.B.

PN 39-79
37496



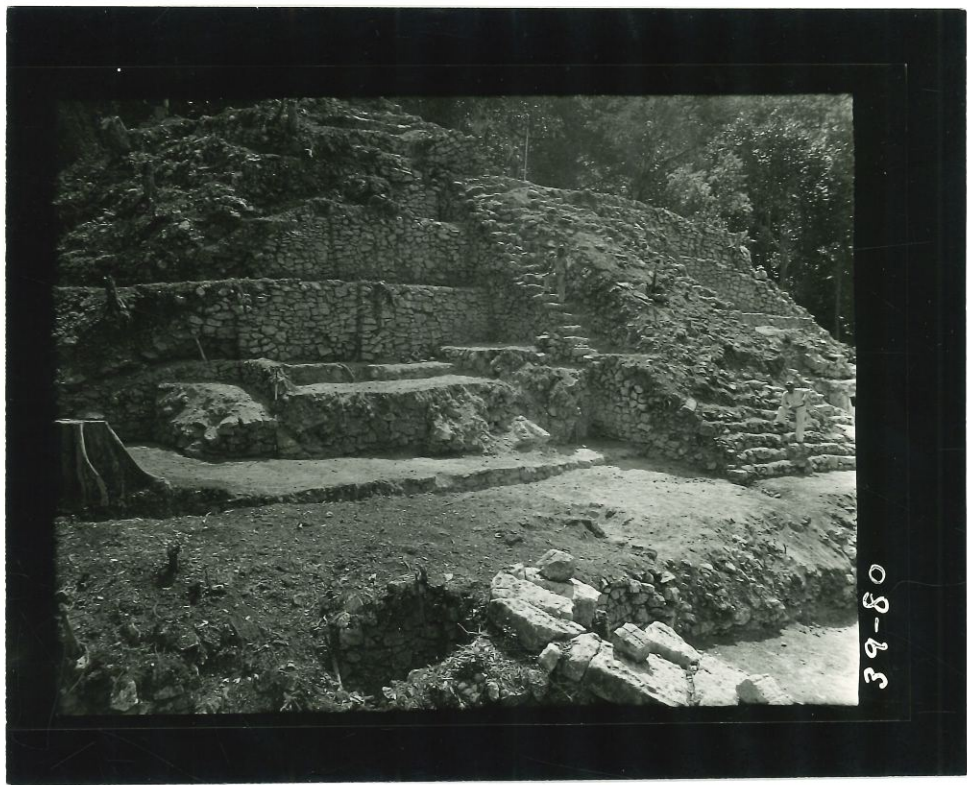
39.79

KODAK SAFETY FILM

KODAK

J84

PN39-79
37496



39-80

PH39-80
37497



39-80

PN 39-80
37997



39-81

PN(39-8)
37498



39-81

PN39-81
37498



39-82

PN 39-82
37499



39-82



8

39-83

PN39-83
37500



39-83

8

PN39-83
37500



39-84

387
KODAK
MANTUA

PK39-8A
37501



PN 39-85
37502



39-86

PN39-86
37503



39-86

PN39-86
37503



39-85

PN39-85
37502



39-87

PN39-87
37504



39-87

PN39-87
37504



PN39-88
37505



39-88

3

PN39-88
37585



39-89

PN39-89
37506



2

39-90

PN39-90
37507



39-90

PN 39-90
37507