



97-301

57-201

FN 37-301

37301



37-302

~~27-202~~

PN3T-302

37302



97-303

500-40

PN 37-303
37303



PN 37-304
37304



© COPYRIGHTED BY:
UNIVERSITY MUSEUM
UNIVERSITY OF PENNSYLVANIA
33RD AND SPRUCE STREETS
PHILADELPHIA, PA 19104

NOT TO BE REPRODUCED WITHOUT PERMISSION

CAB #11, DR 3



37-306

37-306

PN 37-306 ✓

37306



© COPYRIGHTED BY:
UNIVERSITY MUSEUM
UNIVERSITY OF PENNSYLVANIA
33RD AND SPRUCE STREETS
PHILADELPHIA, PA 19104

NOT TO BE REPRODUCED WITHOUT PERMISSION

CAB #11, DN 3



PN 37-307
37307



37-308

PN 37-308

37308



37-308

PN 37-308
37308



PN 37-309
37309



PN 37-309
37309



97-310

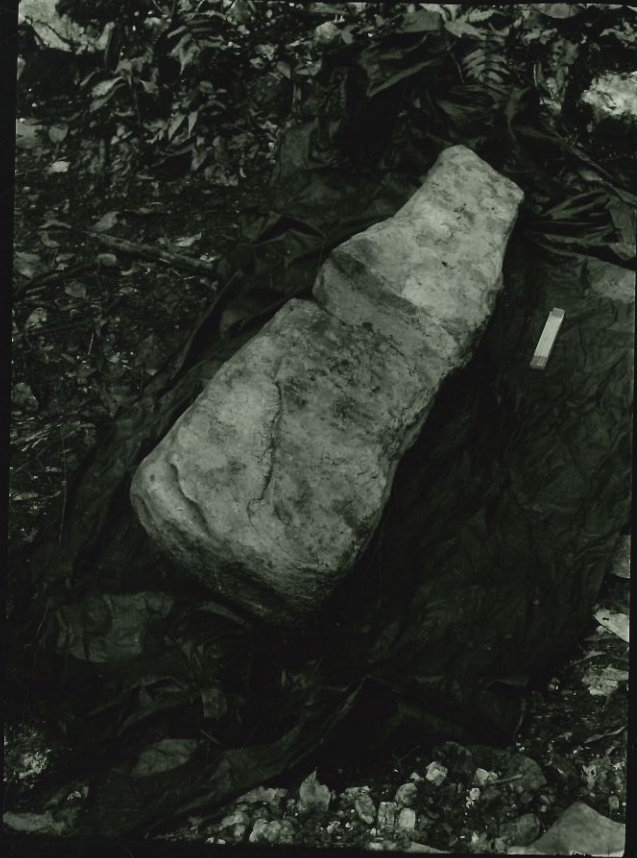
PN37-310
37310



97-311

PN 37-311
37311

37-312



PN 37-312

37312



PA 37-313

37313



S7-314

PN 37-314
37314



Е. С. ТАМЫШ — НИЦЬ ВЪ СЕ — МОДНОМЪ 37 - 315

PN37-315
37315



37-316

PN37-316
37316



PN 37-316
37316



37-316

PN 37-316
37316



PN 37-318

37318



PN 37-319

37319



PN 37-321
37321



37-322

PN 37-322
37322



PN 37-325

37325



37-326

PA 37-326

37326



37-327

PN 57-327

37327



37-329

PN 37-329
37329

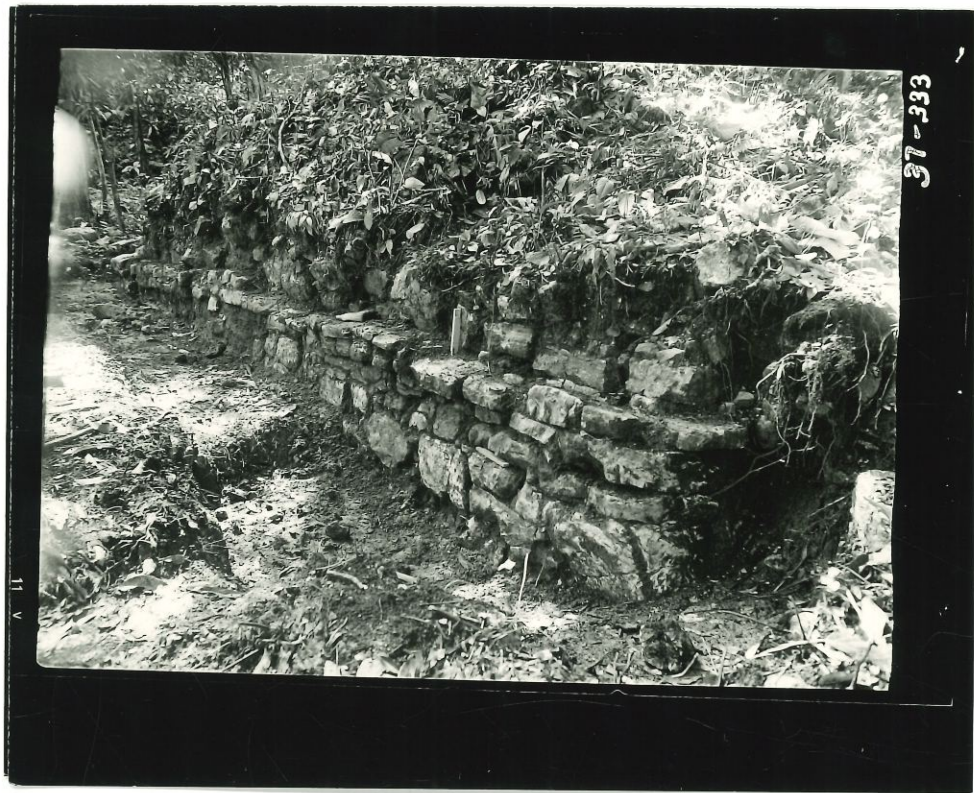


PN 37-331

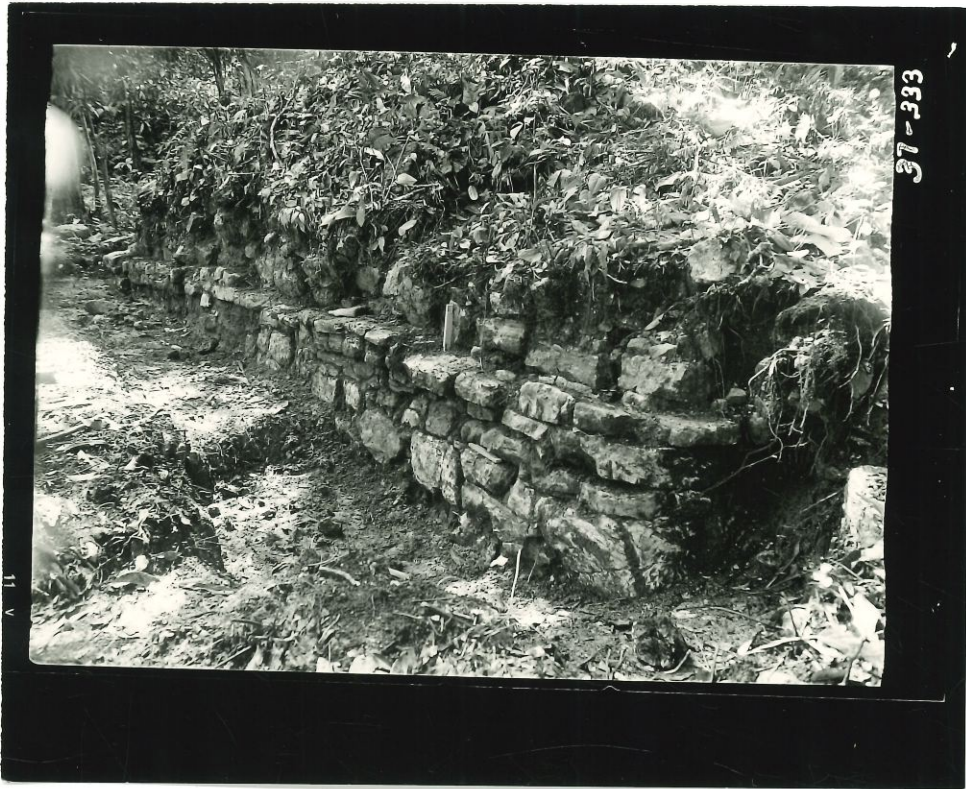
37331



PN 37-331
37331



37-333



37-333

PN 37-333

37333



97-334

PN 37-334
37334



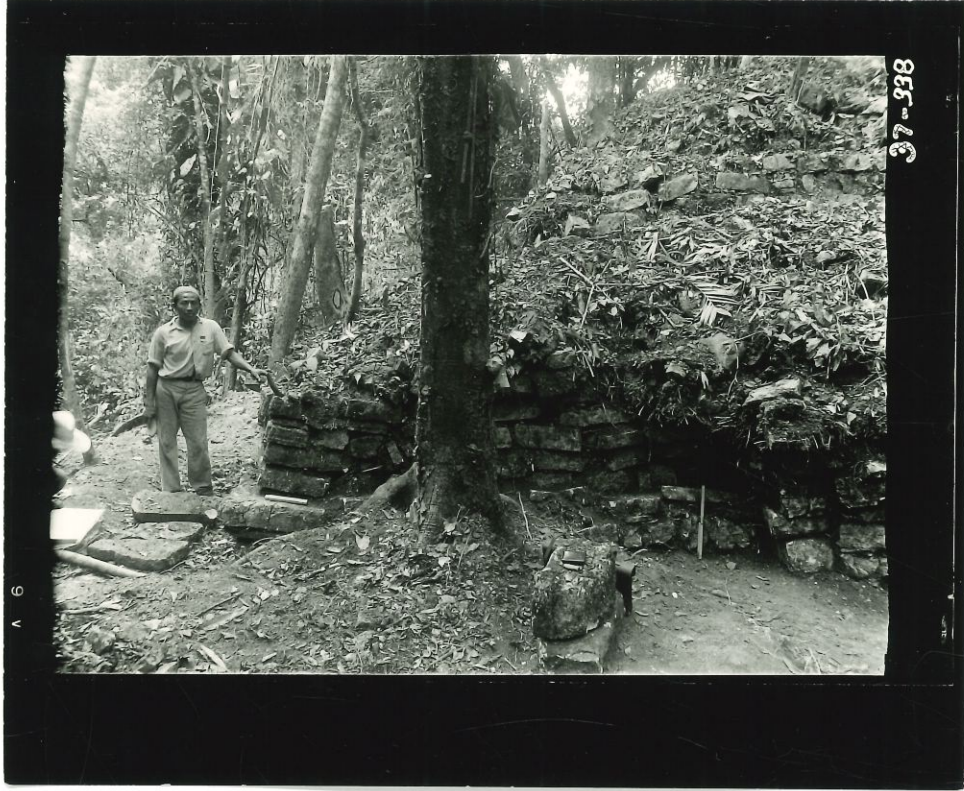
37-336

PN 37-336
-37336



37-337

PN 37-337
37336



PN 37-338

37338



PN 37-339

37339



045-15

PN37-340

37340



37-342

PN 37-3A2

37342



37-343

4
A

PN37-343
37343



37-345

PN 37-345
37345



FAE-52

FN 37-3A7

373A7



37-348

PN37-348

37348



37-350

12 V

PN 37-350
37350



37-353

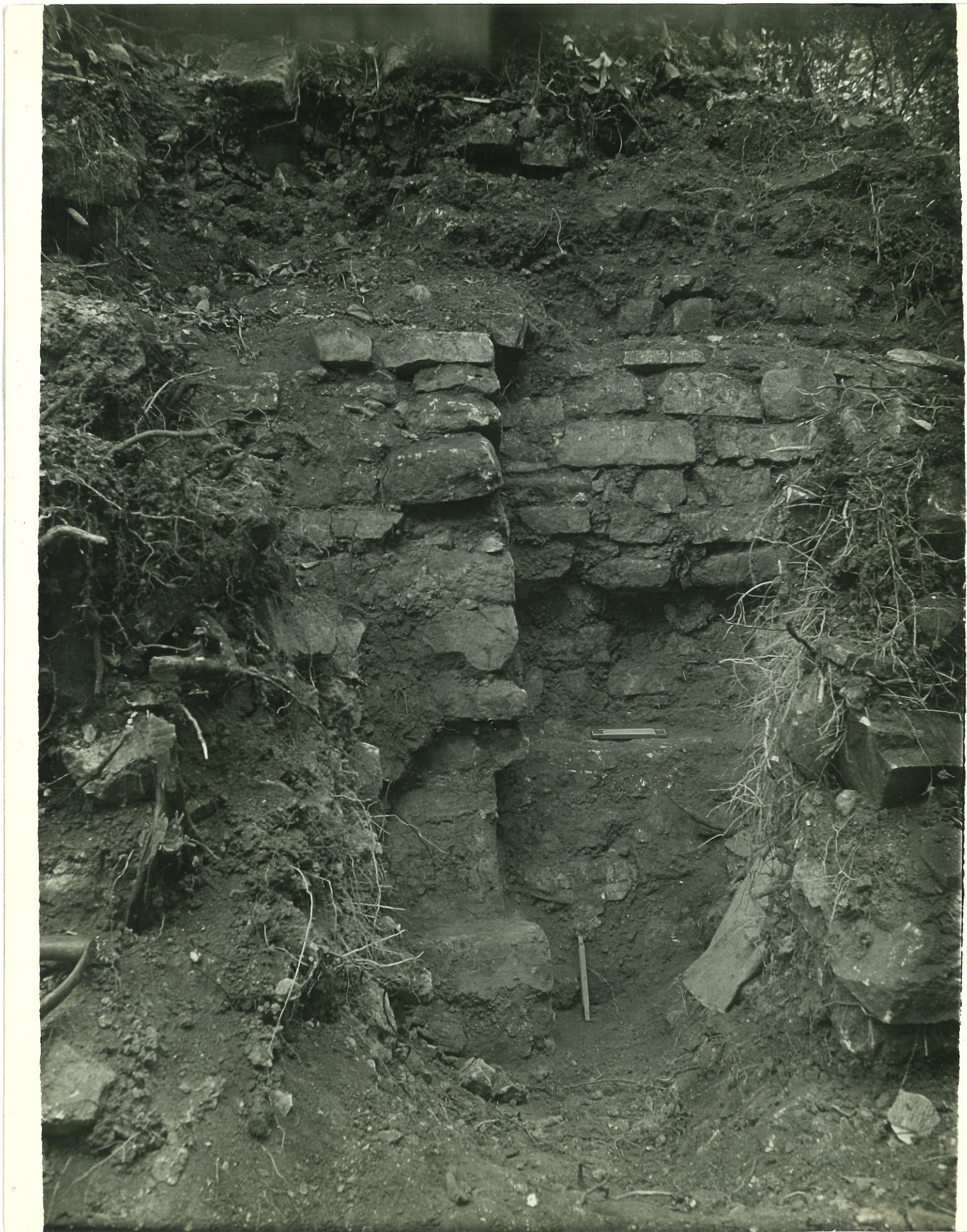
PN 37-353
37353



12 v

426-324

PN 37-354
37354



37-355

PN 37-355
37355



37-355

PN37-355
37355



FN 37-355
37355



376356

2 v

PN 37-356

37356

65E-66



11 v

PN37-359
37359



S-17-21
L4+@ L4+@
L4+@ L4+@



EJE - TC

PN 37-363
37363



17-17

17-17

S-17-17

8-17-17

17-17

PN 37-367
37367



PdE-5E

PN 37-369

37369



W-16-52



07E-52

PN 37-370
37370



PN 37-373

37373



37-315

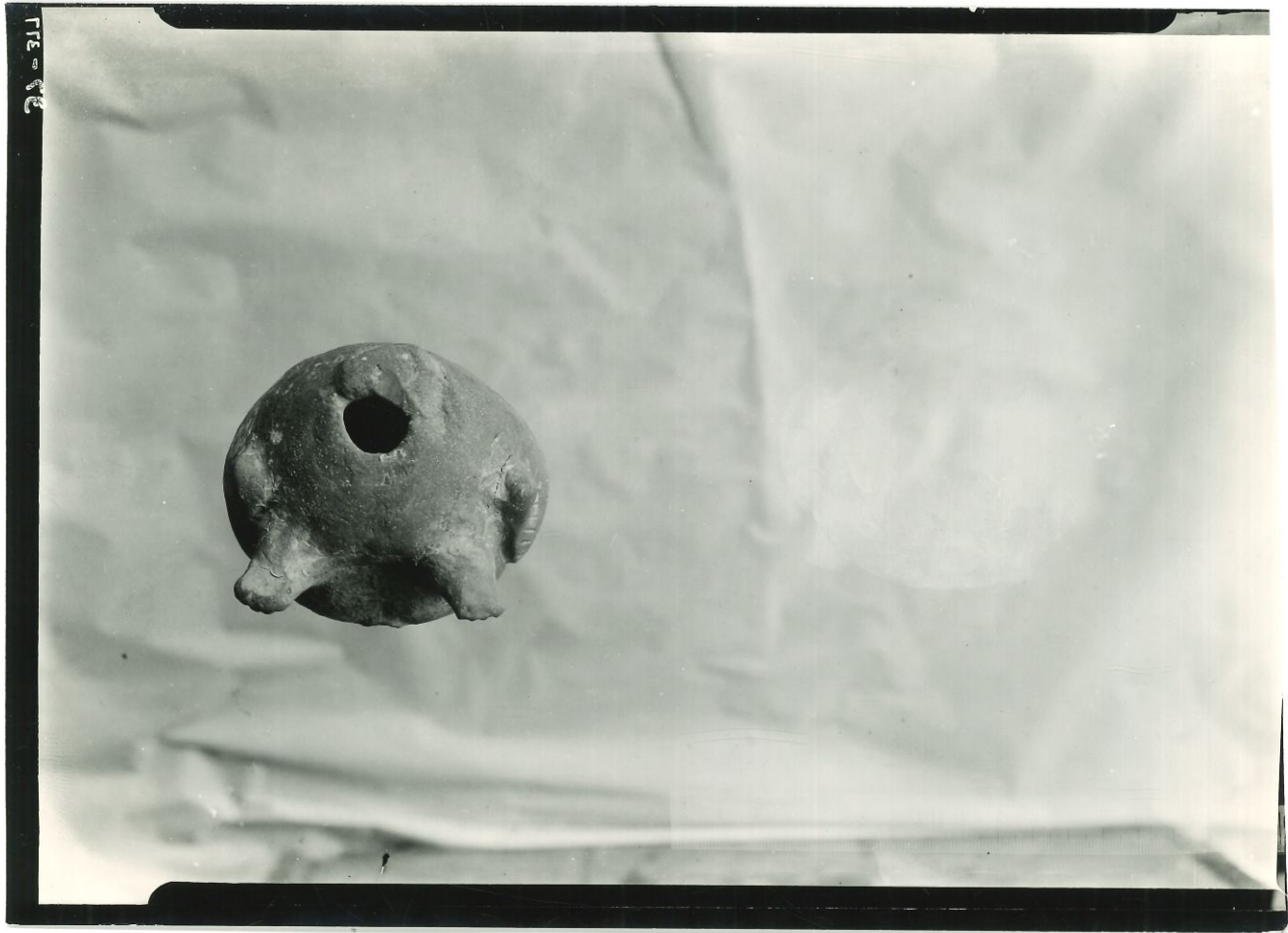
PN 37-375
37375



DPE 5E



FDN 37-376
37376



PN37-377

37377



4 V

METER 0 1 2 3 4 5 6 7 8 9 10 11 12 13 14 15 16 17 18 19 20

PFE-88

PN37-379
37379



97-381

— STIMATI — 1211211 — 1111111 — 1111111 — 1111111 —

PN37-381

37381



54-79



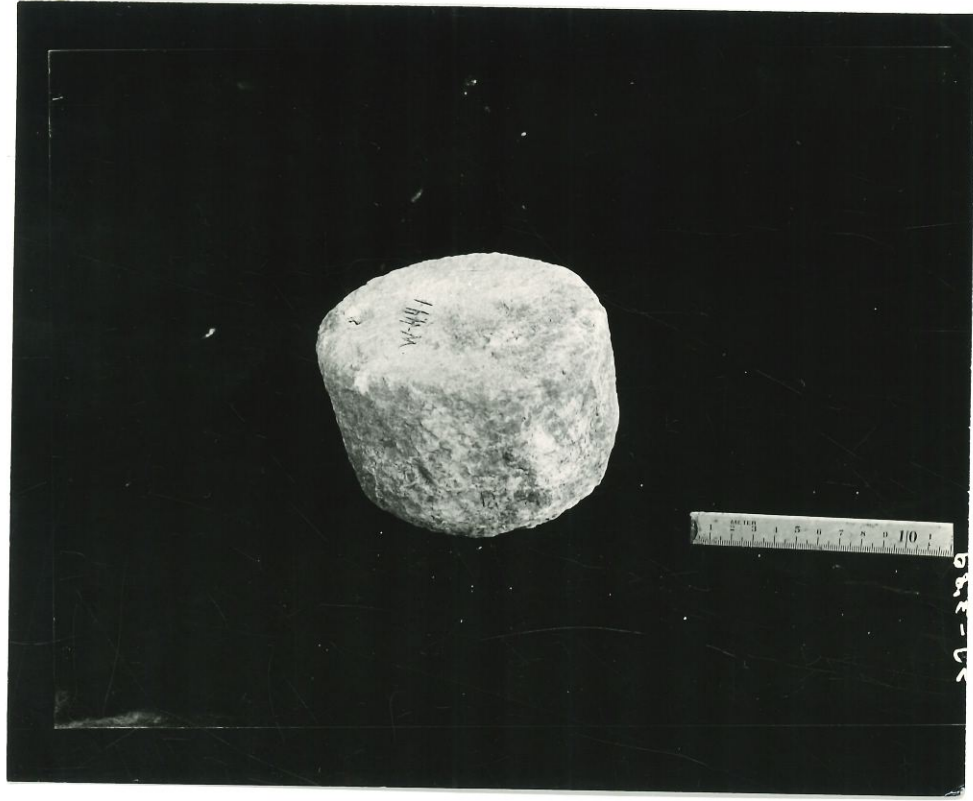
PN37-383

37383



PN37-387

37387



168-24

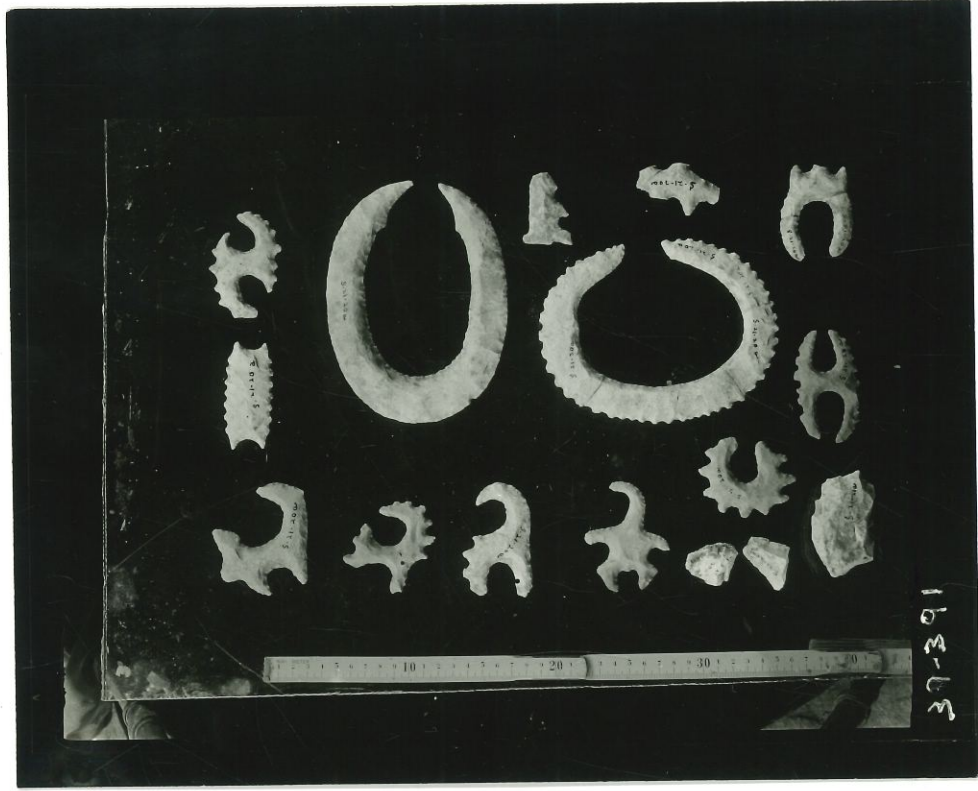
PN 37-389

37389

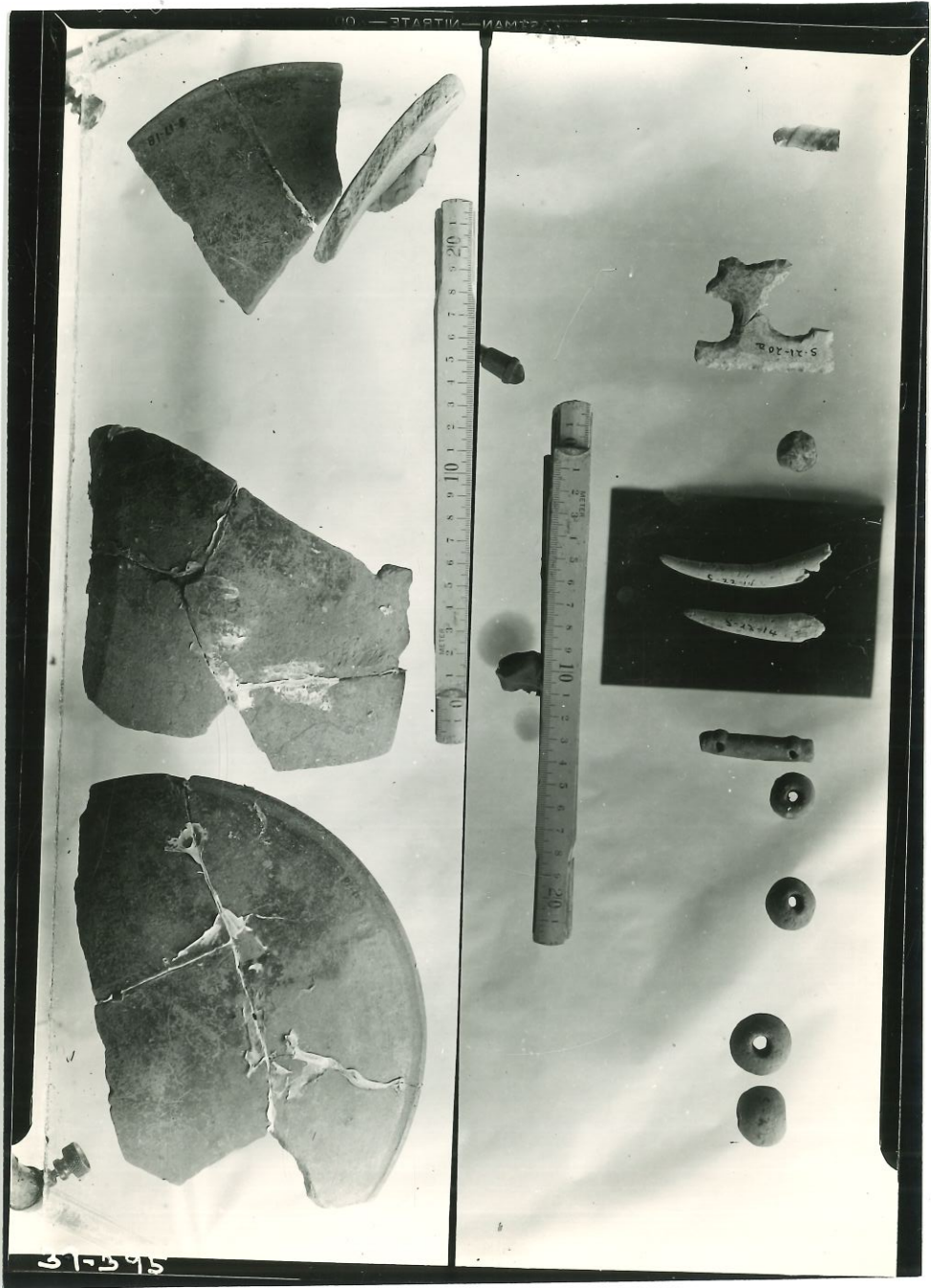


PN37-390

37390







31-595

STAMPA - MAMBA - 10

5-21-208

5-21-208

5-21-208

PN3T-395-

37395-



PN 37-397⁷

37397



57-298

PN 37-398

37398





37-399

21105 17

PN 37-399

37399



37-401

211305

PN37-401
37401



37-403

37403



PN 37-405

Neq. 37405

Photo-Brown B 15
Guatemala