



36-244

FN 36-244
17424



36-245

PN36-245
17A25



36 - 245

PN 36-2A5

17425



36-246

36-246

17426



36-247

PN 36-2A7
17927



36-248

PN 36-248
17428



36-249

DN 36-249

17429



36-249

PN 36-299
17429



36-250

PN 36-250
17430



36-251

PN 3C-251
17431



PN 36-252
17432



RN 36-252
17432



36-253

PN 36-253
17433



36-254

PN 36-254
17434



17435

PN 36-255



36-256

PN 36-256
17436



36-257

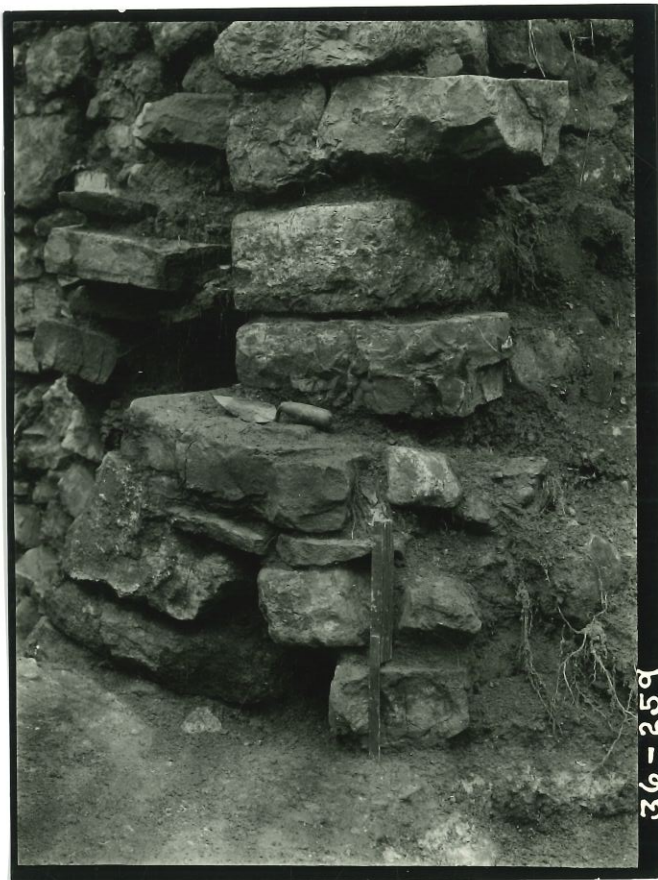
PN 36-257

17437



PN 36-258

17438



36-259

PN 35-259
17439



PN 36-260
17440



36-261

PN 36-261
17447



36-262

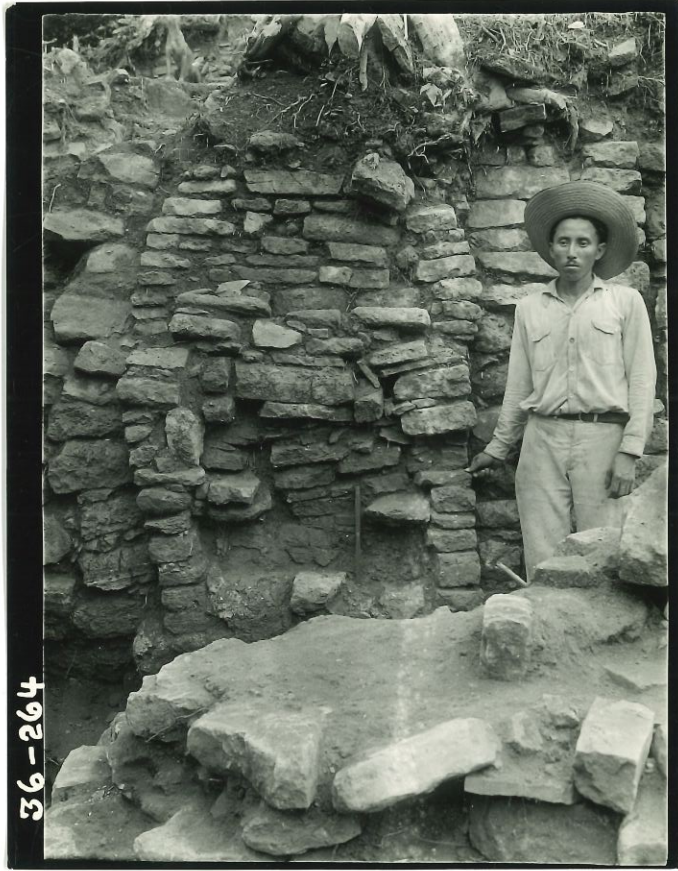
PN 3C-262

17442



36-263

PN 36-263
17443



36-264

PN 36-26A
17444



36-265

PN 36-265
17445



PN 3C-266

17446



36-267

PN 36-267

17447



36-267

12 W

PN 36-267
17447



36-268

PN 36-268
17448



36-269

PN 36-269
17449



PN 36-278
17450



PN 30-271
17451



36-212

PN 36-272
17452



36-213

PN 36-273
17453



36-274

PN 36-274
17454



36-275

PN 36-275
17455



36-276

PN 36-276
17456.



36-277

PN 36-277
17457



36-277

PN 36-277
17457



36-278

PN 35-278
17458



36-219

PN 36-279
17459



36-219

PN36-279
17459



36-280

PN 36-280

17460



36-281

PW 36-281

17461



36-282

PN 36-282
17462



36-283

PN36-283
V7463



36-284

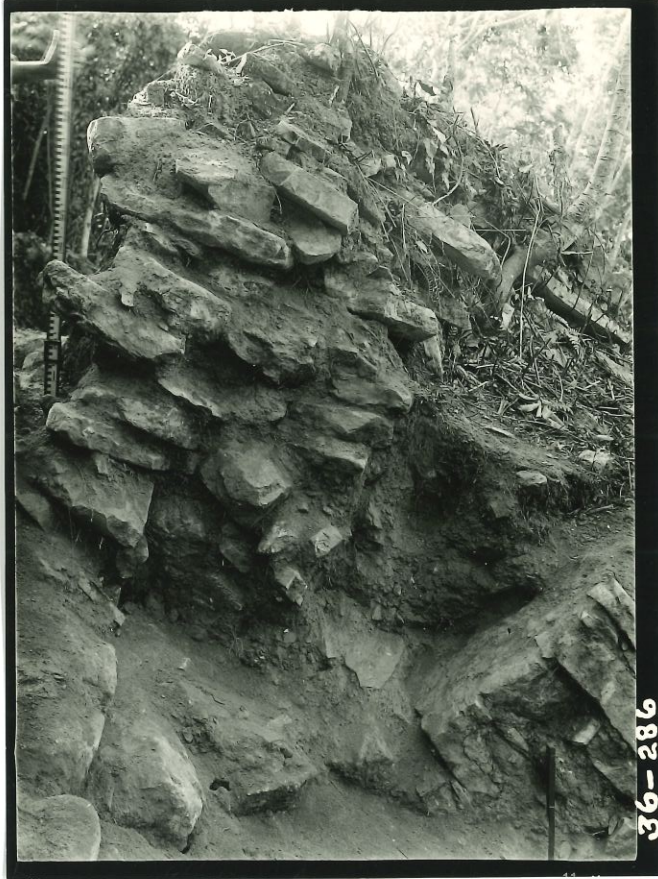
PN 36-284
17464



36-285

PN 36-285

17465



PN 36-286

17466



36-287

PN 36-287

17967



36-288

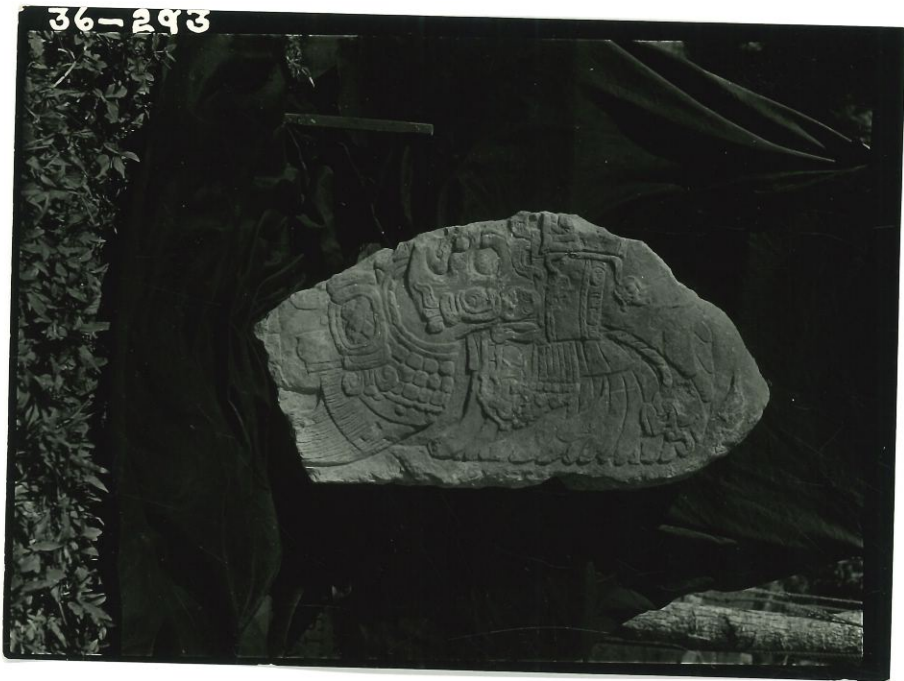
PN 36-288
217468



PN 36-289
17460

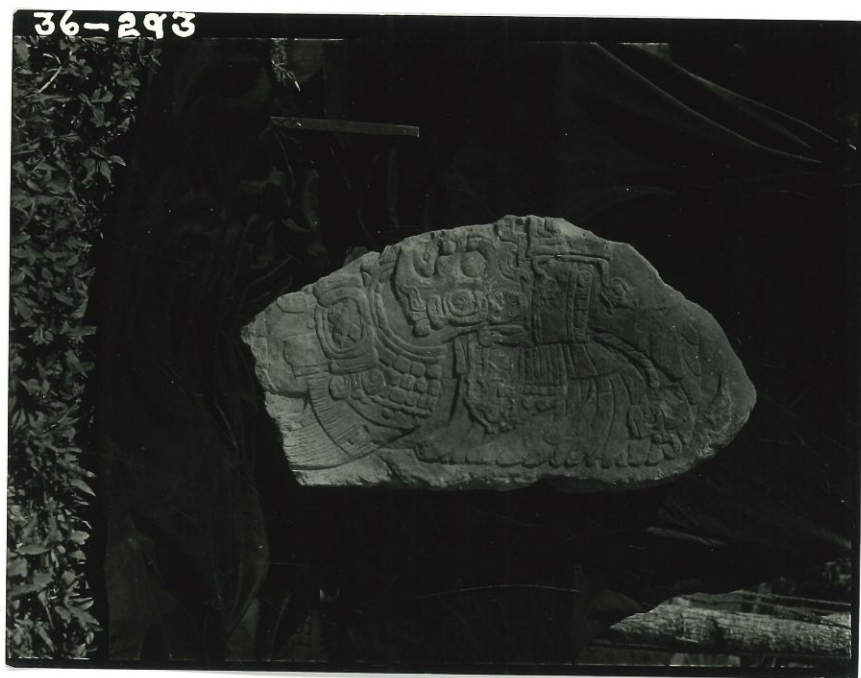


PN 36-240
17470



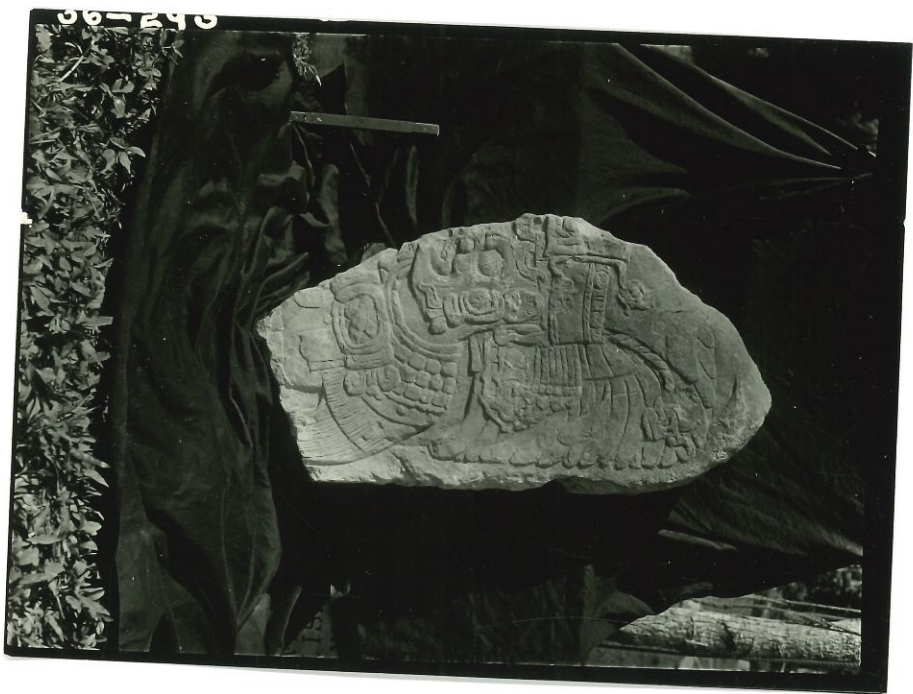
PN 36-273

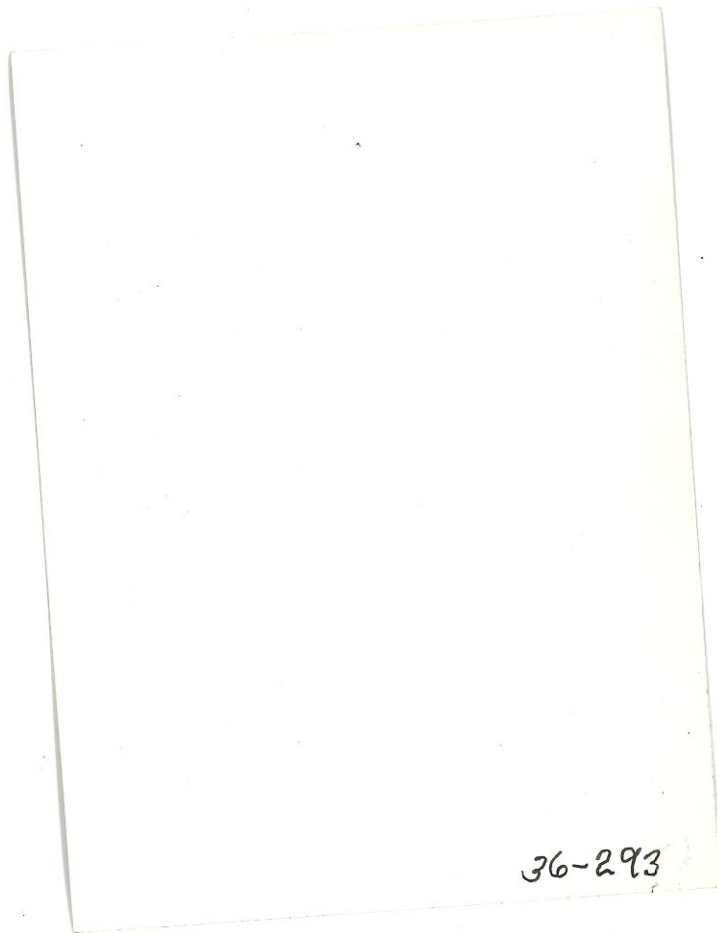
17473



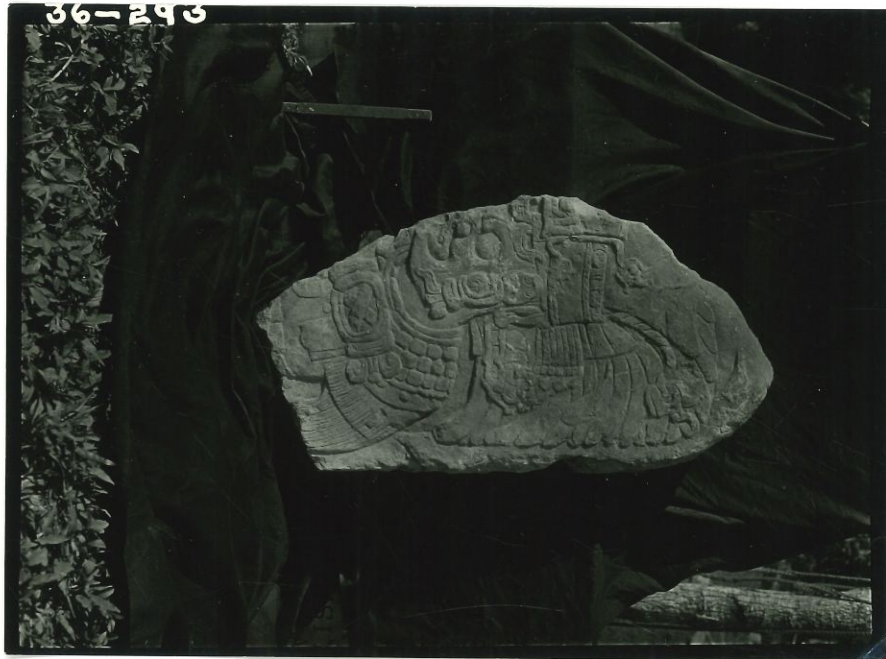
PW 36-293

17473





36-293



17473 PN 36-293



PN36-29A
17474

36-296



PN3C-298
17476



36-201

PN 36-201
17381



36-202

PN 36-202
17382



36-203

PN 35-203
17383



36-204

PN 36-204
17384



PN 36-205
17385



PN 36-298
17478



36-206

PN 36-206

17386



36-207

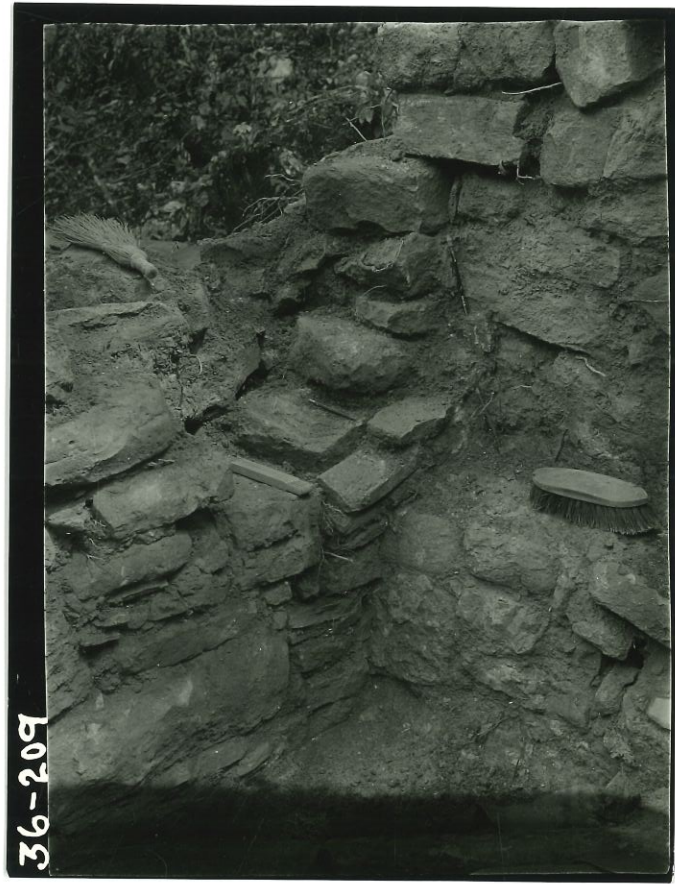
PN 36-207

17387



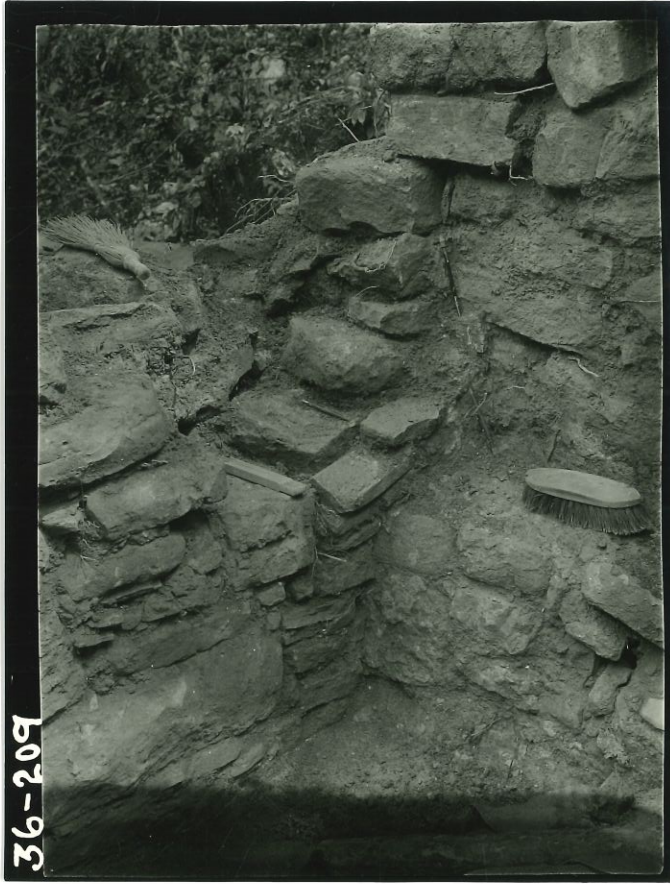
6-208

PN 36-208
17388



36-209

PN-36-209
17389



36-209

PN 35-209
17389



PN 36-210
17390



PN3C-210
17390



36-211

PN 36-251
17391



PN 36-252
17392



36 - 213

PN36-213

17393



136-214

PN3G-214

17394



36-215

PN 36-215
17395



36-215-8

36-215

PN 36-215



36-216

PN36-216

17396



ISO

НАРОК—СТАРИН—ИМАТГАЗ

36-217

PN 36-217
17097



17397

PN 36-217

36-217

The "ayas often buried sacred or symbolic objects in pottery vessels. The picture shows such a pot before removal. A number of superimposed plastered floors have been cut to expose the pot. A band of conventionalized hieroglyphics runs around the rim. This one probably contained food, as it was empty except for a yellowish deposit. An early floor was broken through when it was placed, and then it was sealed in by a new floor.



5-29

17397

PN 36-217



17397

PN 36-217



J50

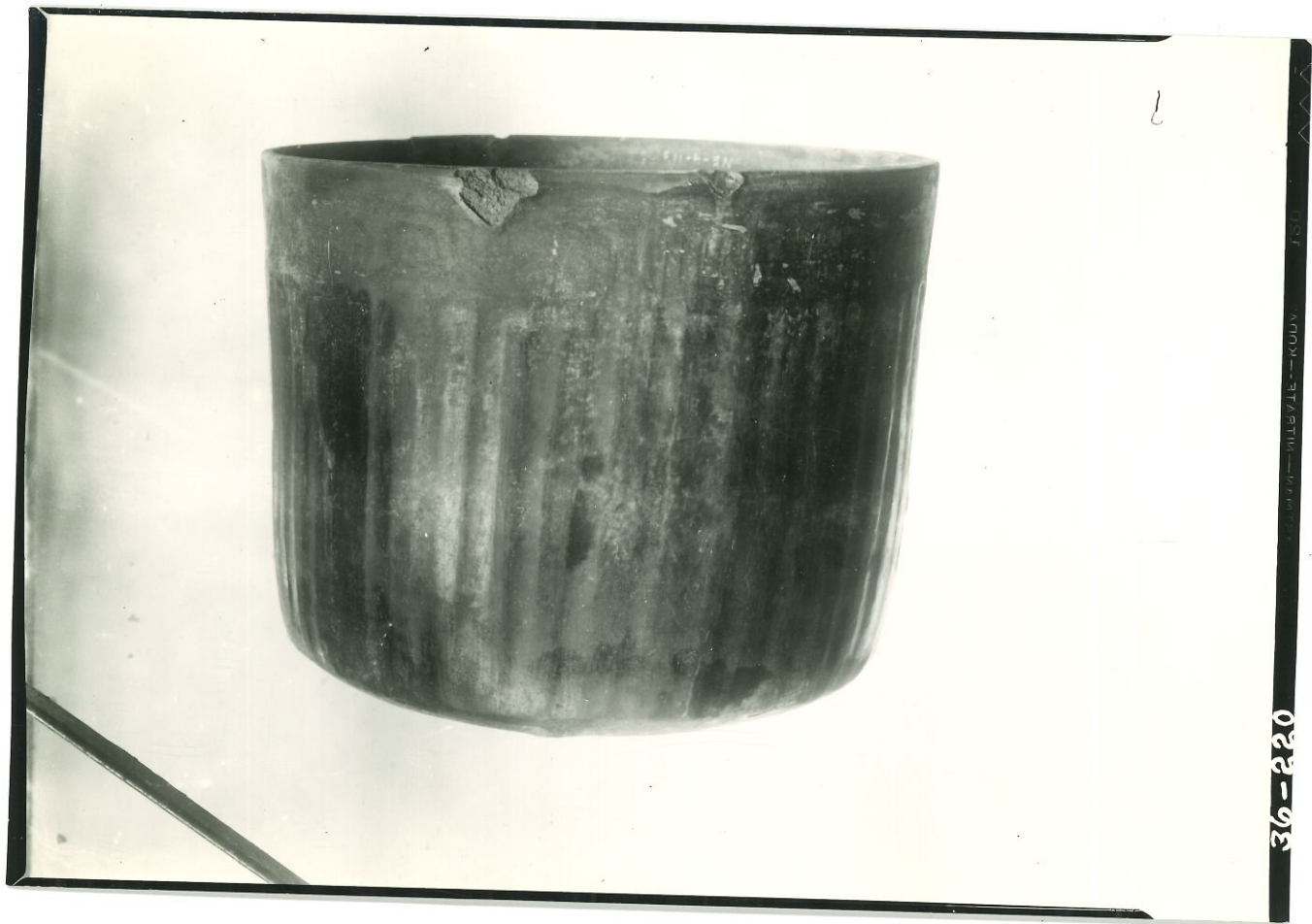
САРМАТ — МИРВАТЕ — КОУДА

36-217

PN 36-217
17397



PW 36-220



2

36-220

MILBYE-KUUV

V7400

PN 36-220



36-221

PN 36-22)

17401



36-222

PN 36-222

17402



36-223

FN 36-223

17403



PN 3C-223
17403



36-224

PN 36-224
17404



36-224

ISF
—MAY 14—KODAK

PN 36-224

17404



36-225

JSD

UNIVERSITY OF MICHIGAN

PN 36-225
17405



36-226

— KODAK SAFETY FILM —

PN 36-226
17406



36-226

36-226

PN 36-226

17406



36-226

36-226

PH

36-226

17486



36-226

36-226

PN

36-226

17406



JSD

EXCAVATION - MILESTONE - KUDVA

36-227

PN 36-227
17407



PN 36-227

17407

5



36-227

PN 36-227
17407

5



36-227

7-11-1941 - MILB 7/1E - KODAK SAFETY FILM - J50

PN 36-227
17407

5



36-228

UNIVERSITY OF CHICAGO

PN 36-228
17408

5



622-92

PN 36-229

17409



PN 36-230
17410



PN 36-231
17411



123-27

36-231

36-231

5

PN 36-231

17411



36-233

S

PN 36-233

17413



36-232

PN36-232

17412

36-232



36-234

PN 36-234
1741A



PN 36-235
17915



36-237

36-237

PN 36-237
17417



OSJ
MAON—STATHI—MANTAS

36-238

PN 36-238
17418



523-92

PN 36-239

17419



36-240

1937 - MUSEUM - KUON - J.S.O.

PN 36-240
17420



36-240

36-240

PN 36-240
17420



36-242

PN 36-242
17422



36-257

PN 36-257
17437

36-257



36-241

36-241

PN 36-241
17421