



35-206

PN35-206



PN35-206



33-207

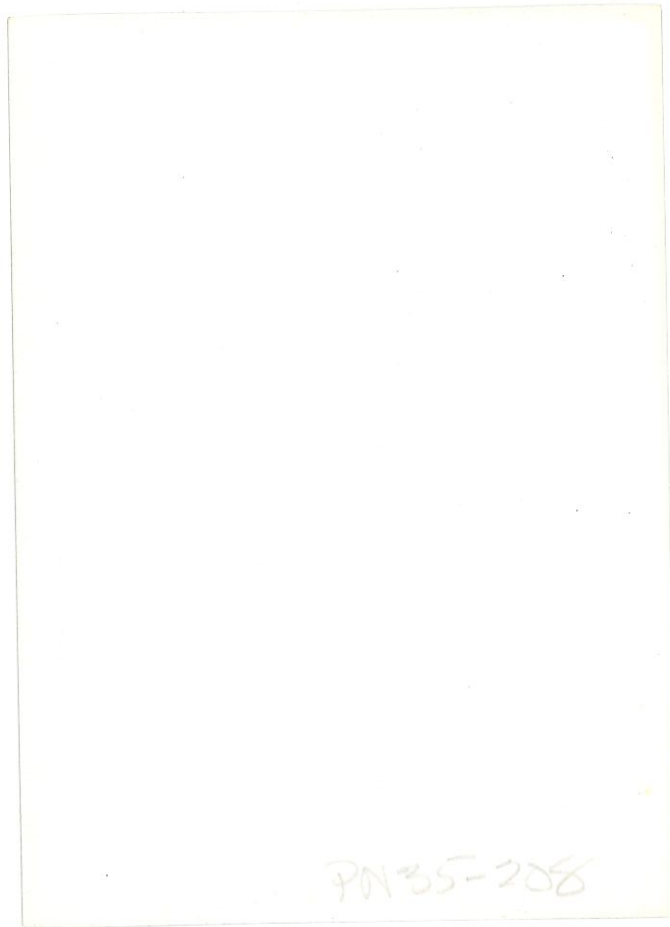
PN 35-207



33-207

PN35-207





PN 35-208



PW35-209



PN 35-210



35-211

5

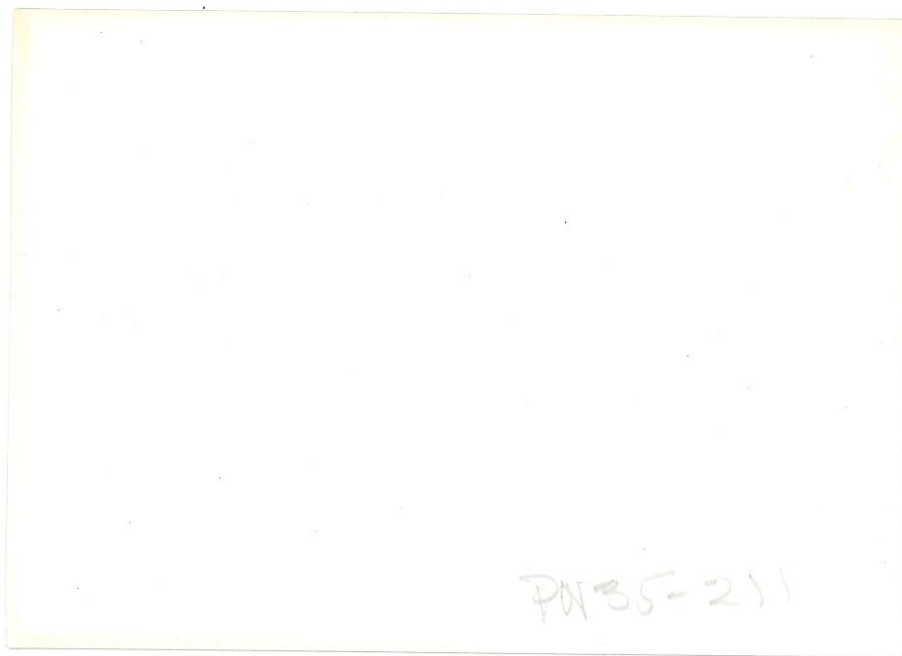
PH 35-211



35-211

PN 35-211





PN 35-211



35-211

PD135-211



PN35-211



35-212

PN 35-252



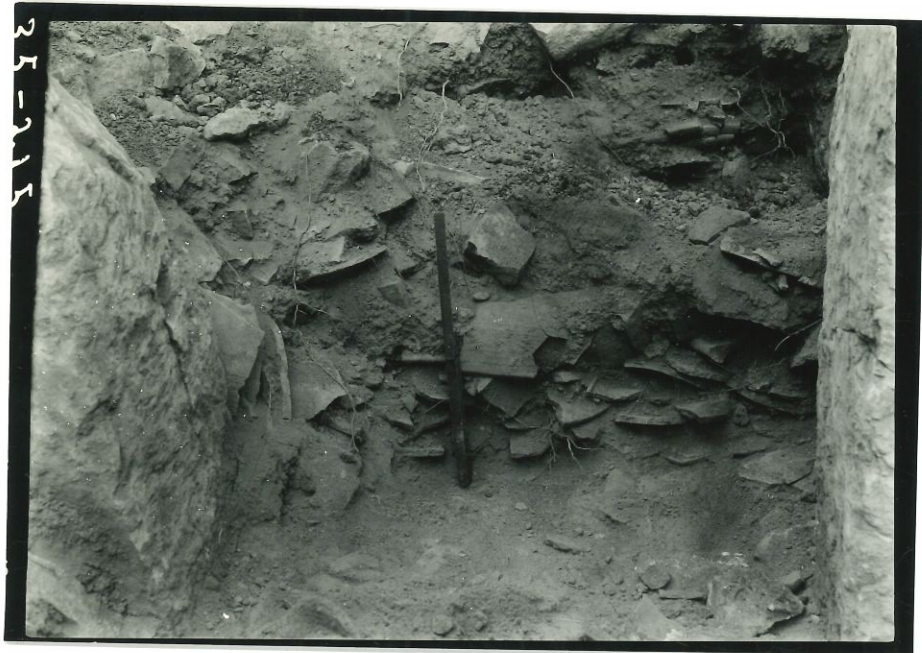
PN35-213



35-214

9

PN35-214



POV35-215



PN(35-20A)

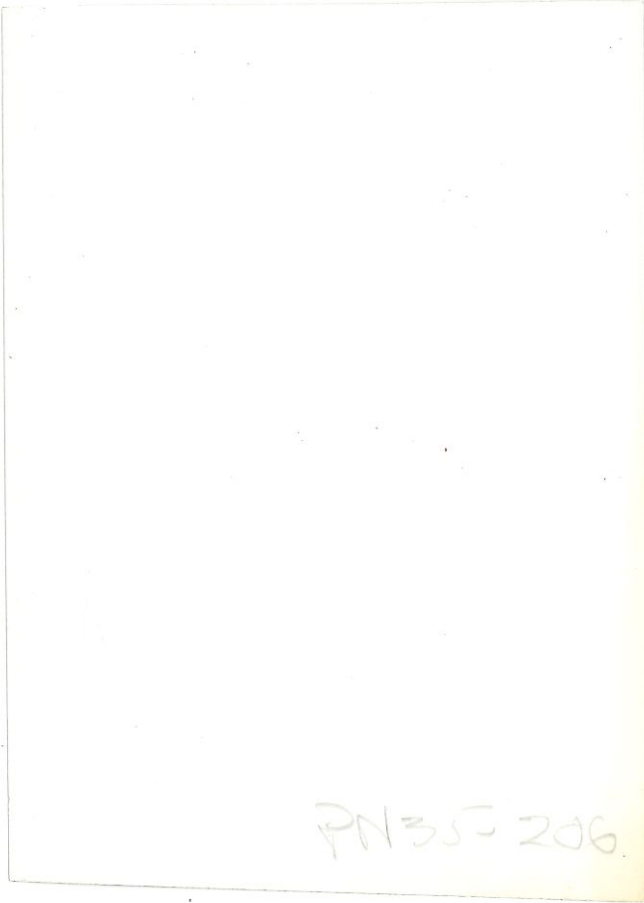


35-2-96

PA35-206



35-2.9b



PN 355 206



35-202

PN 35-202



PN35-201



35-203

PN 35-203



35-211

PN35-211



35-215

PN 35-215



PN 35-256



12

EVJINUM—MILBATE—KODAK

35-240

35-217

PN 35-217



PN 35-218



PN 35-219



35-220

KODAK SAFETY FILM

35

PN 35-220



35-221

PN 35-221



PN 35-221



PN 35-222



25-223  
MUSEUM - KUOYK

PN 35-222



35-223,

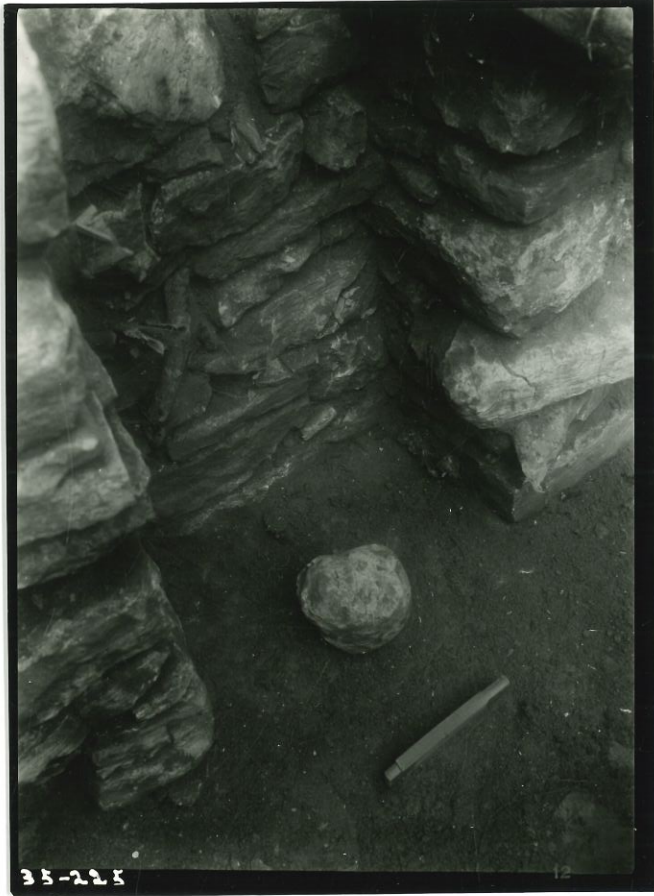
FD 35-223



PN 35-224



PN35-225



PN 35-225



35-225

PN 35-225



PN35-226

Spr. 0-16  
# W-40-13  
Calka, probably sub-antar.



PI KODAK SAFETY FILM

35-229

Spr. 0-16  
# W-40-13  
Cacha, probably sub-olitar.



35-229

PM 35-229



PN35-230



35-237

P. I. NATIONAL ARCHIVES

PN 35-231

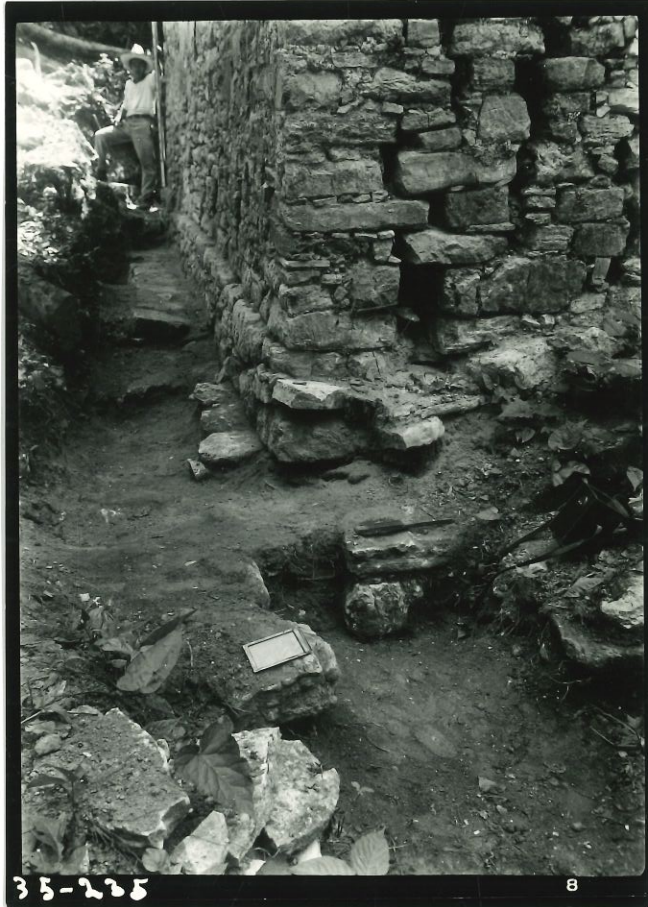


35-231

PN35-231



PA 35-234



PN 35-235



35-236

PN 3J-236



PN 35-237



PN 35-237



PN 35-237



PN 35-237



PN 35-237



PN 35-238



PN 35-239



95-240

PN 35-240



35-241

PN(35-241)



35-241

PN 35-241



35241

PN 35-241



35-242

PN 35-242



35-243

PN 35-243



- 2 : 2

10

POY 35-244



PN 35-245



PN 35-245.



PN 35-246



PN 35-246



PN35-246



PN35-246



PN 35-246

---

~~PW:~~  
MISC. 55 11

photo

1939.241. 5-2-51 catalogued by LSi in 1933

---

1935 252

#

293



FN 35-282



35-252

PN 35-252



35-252

PN 35-252



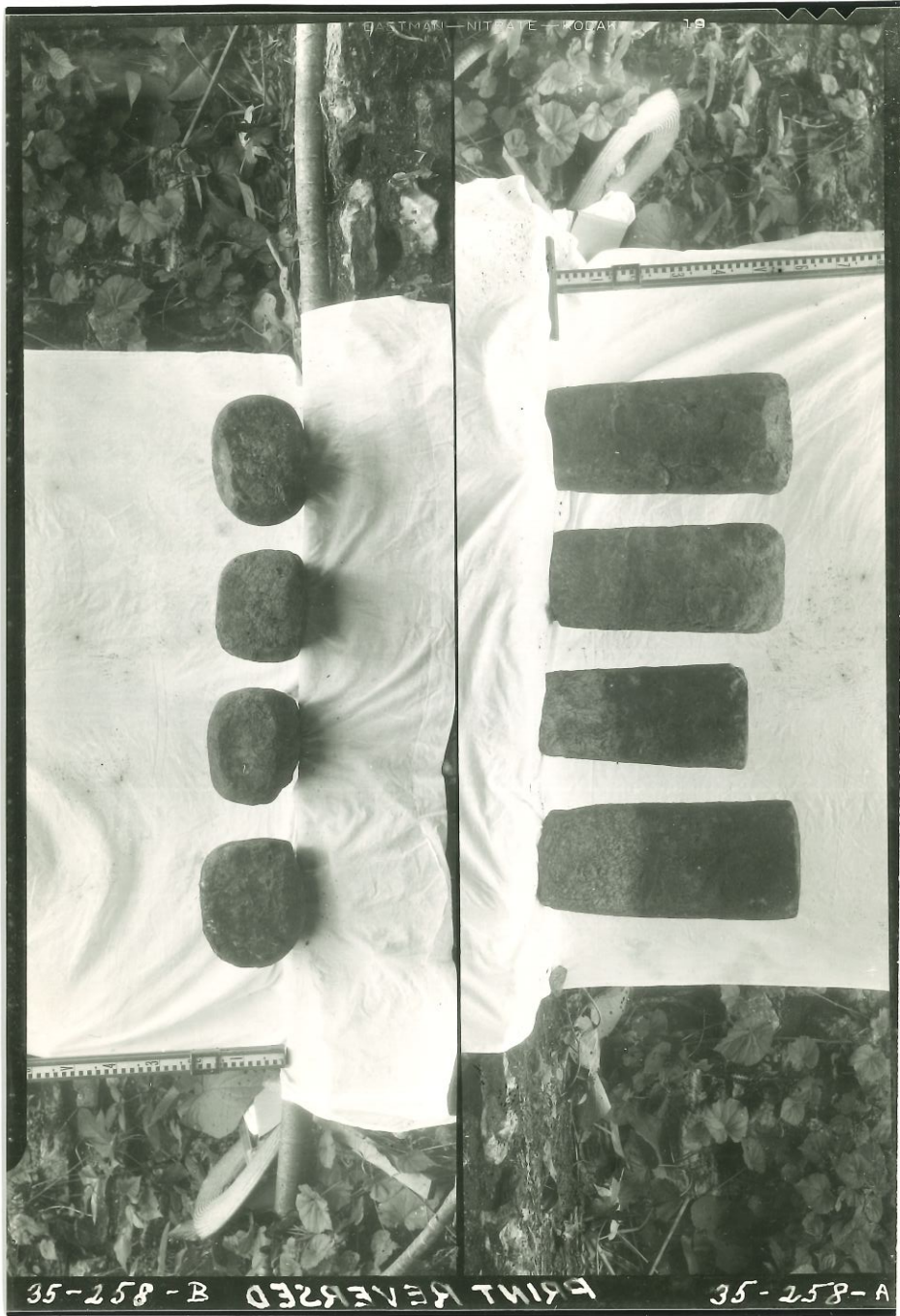
32-528-A

PRINT REVERSED

32-528-B

PN 35-556a

PN 35-258b

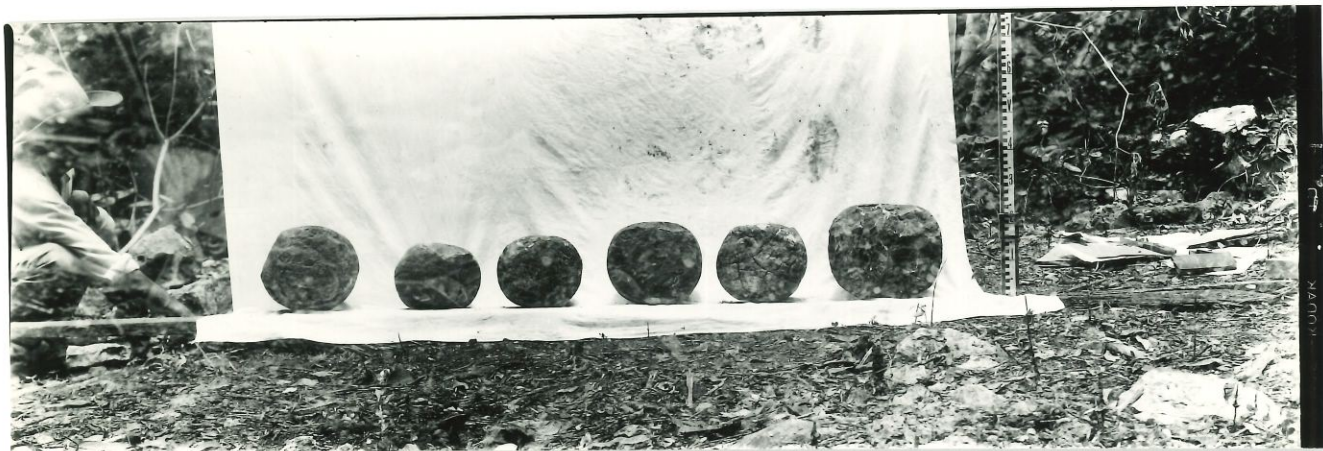


35-258-B PRINT REVERSED

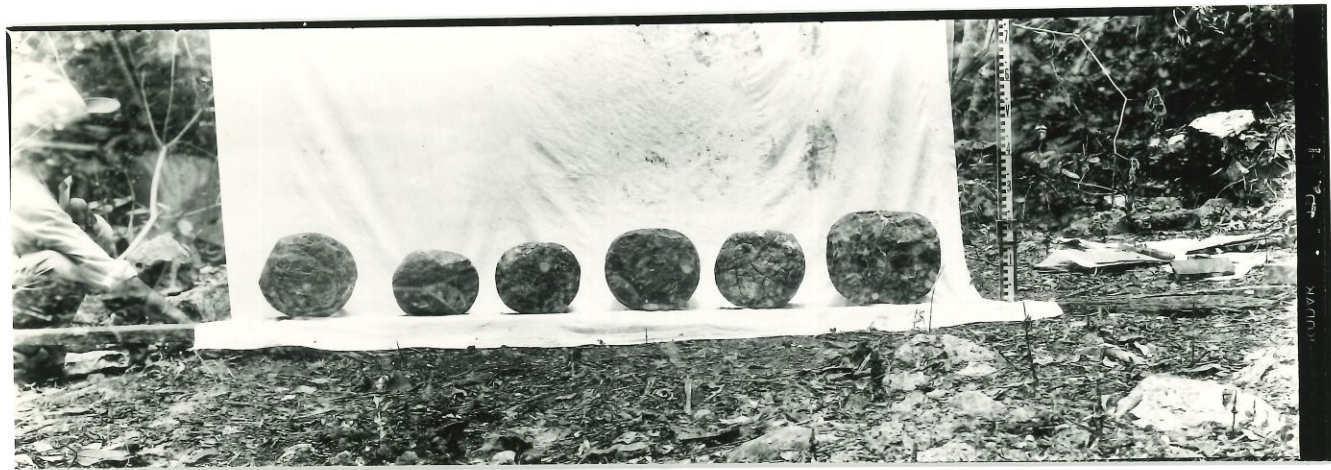
35-258-A

OK

PA 35-258



PN 35-259-6



PH 35-259-6

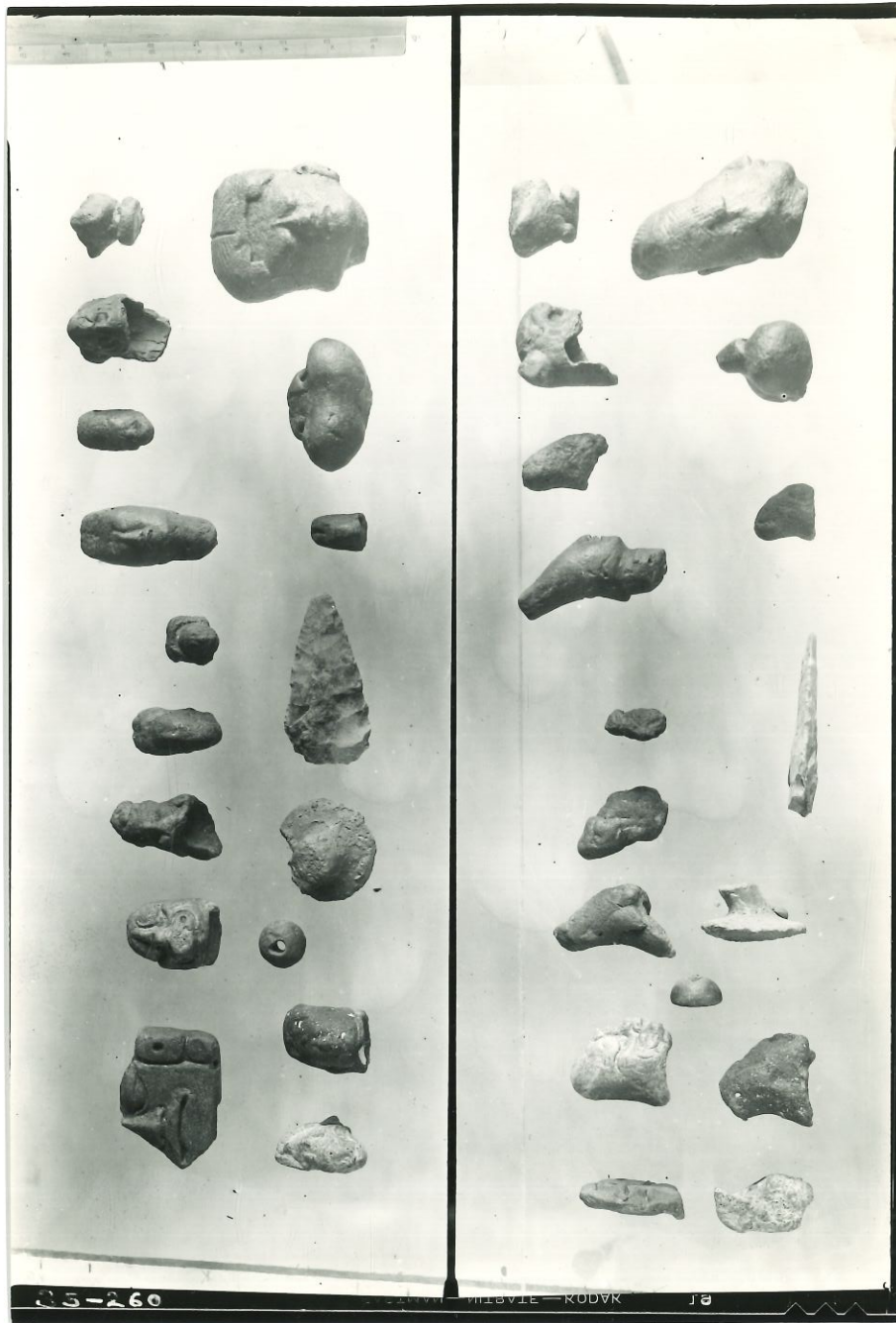


PN 35-259-a



ND

PN 35-259-a



25-260

MILBIE - KODAK

261

PN 35-260



35-261

PA35-261



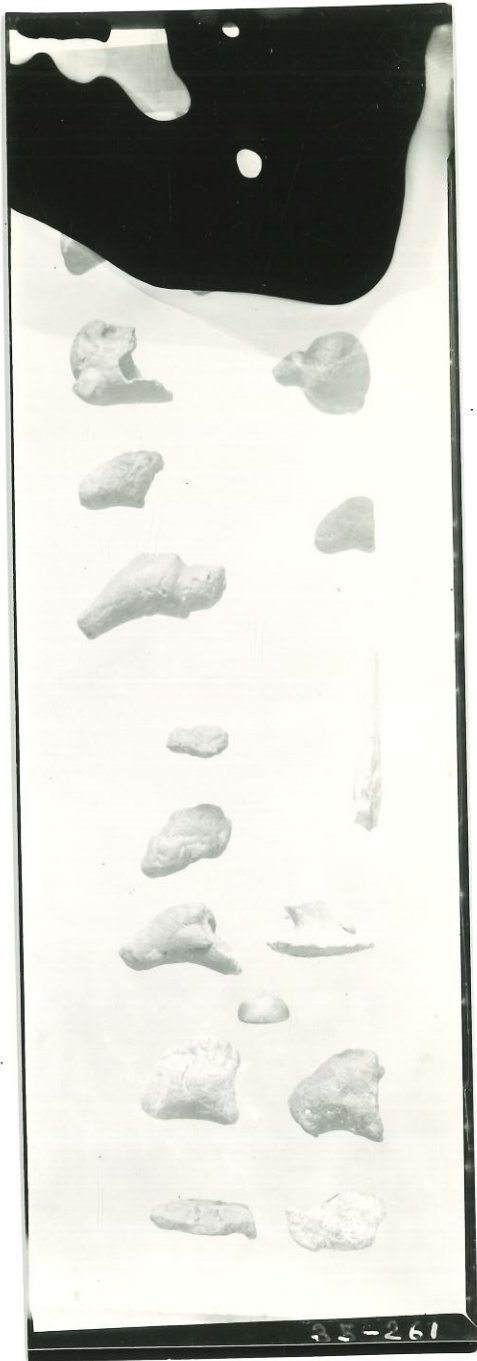
35-261

FN 35-261



35-261

PN 35-261



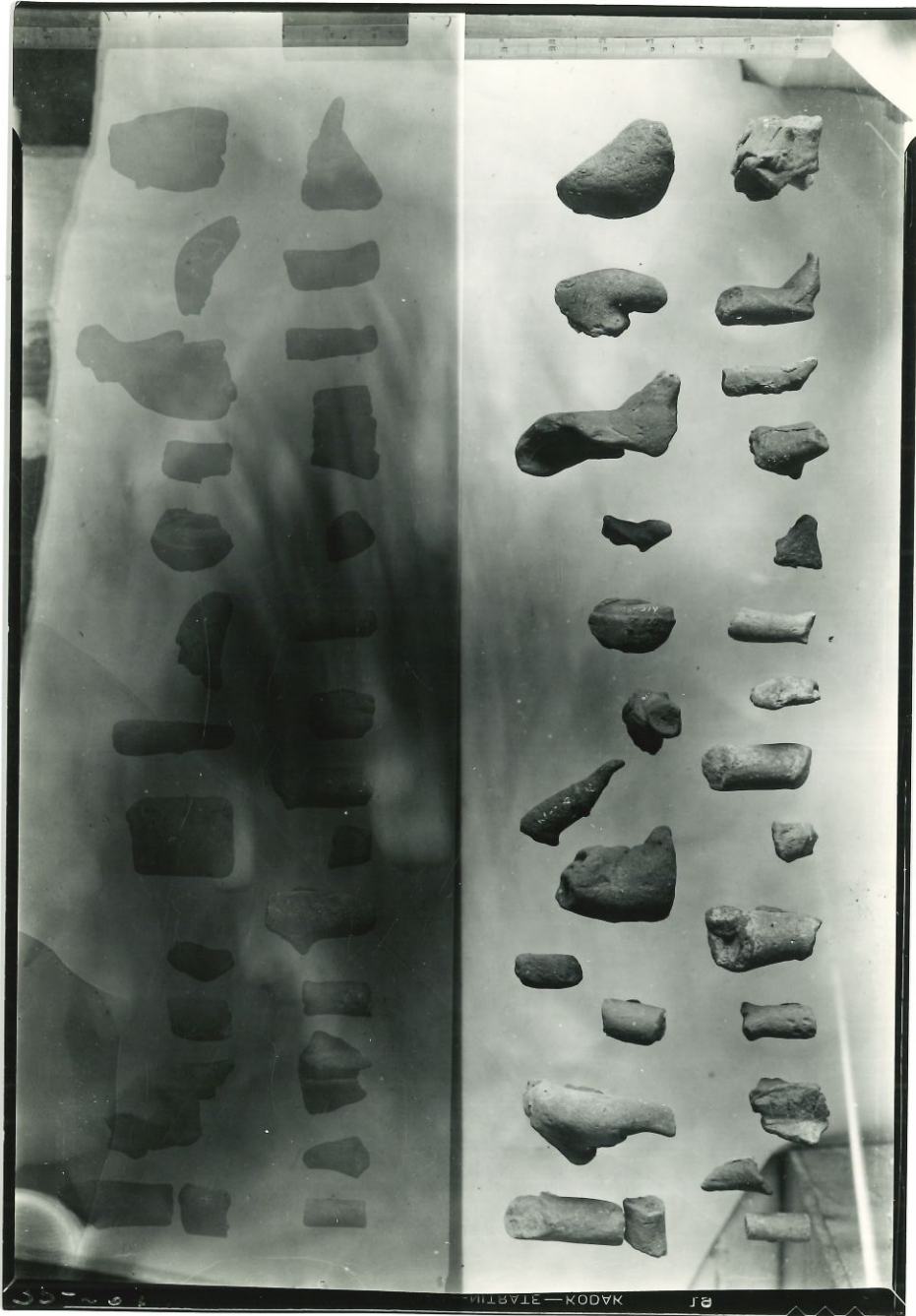
35-261

PN35-261

371 1 6 6

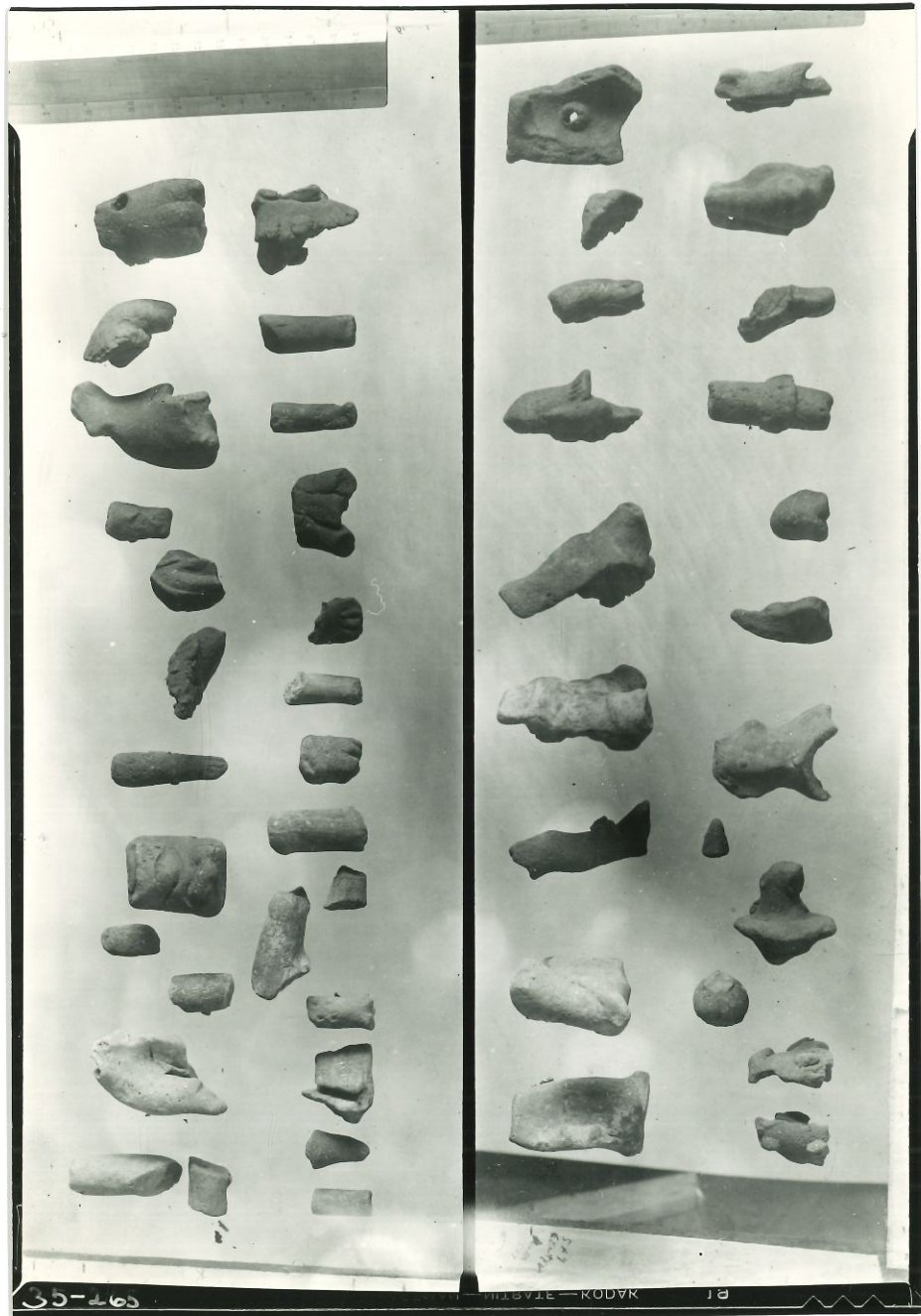


PN 35-262



MAON—STASTIN 21

PN 35-264



35-265

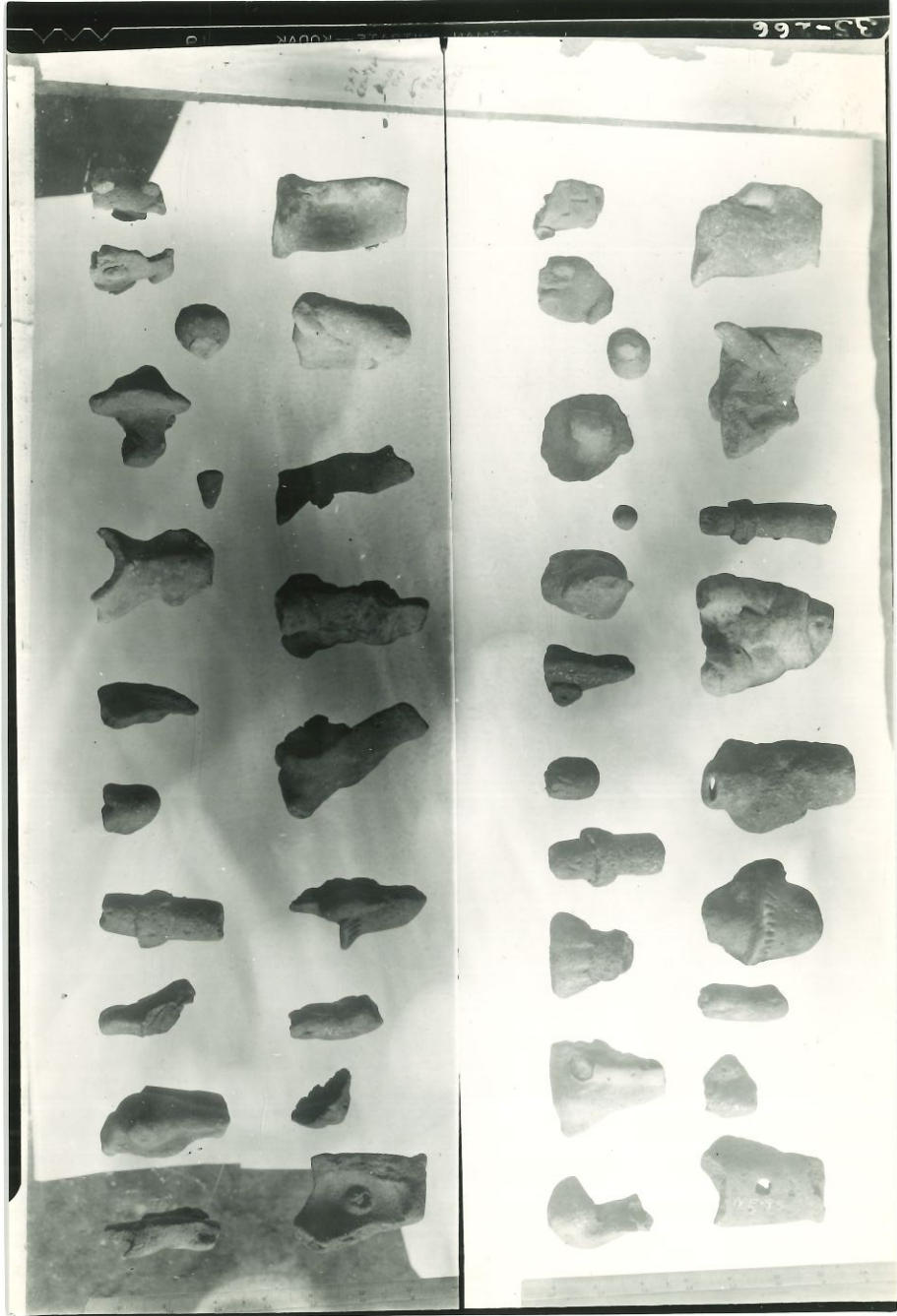
PHOTO — KODAK

12

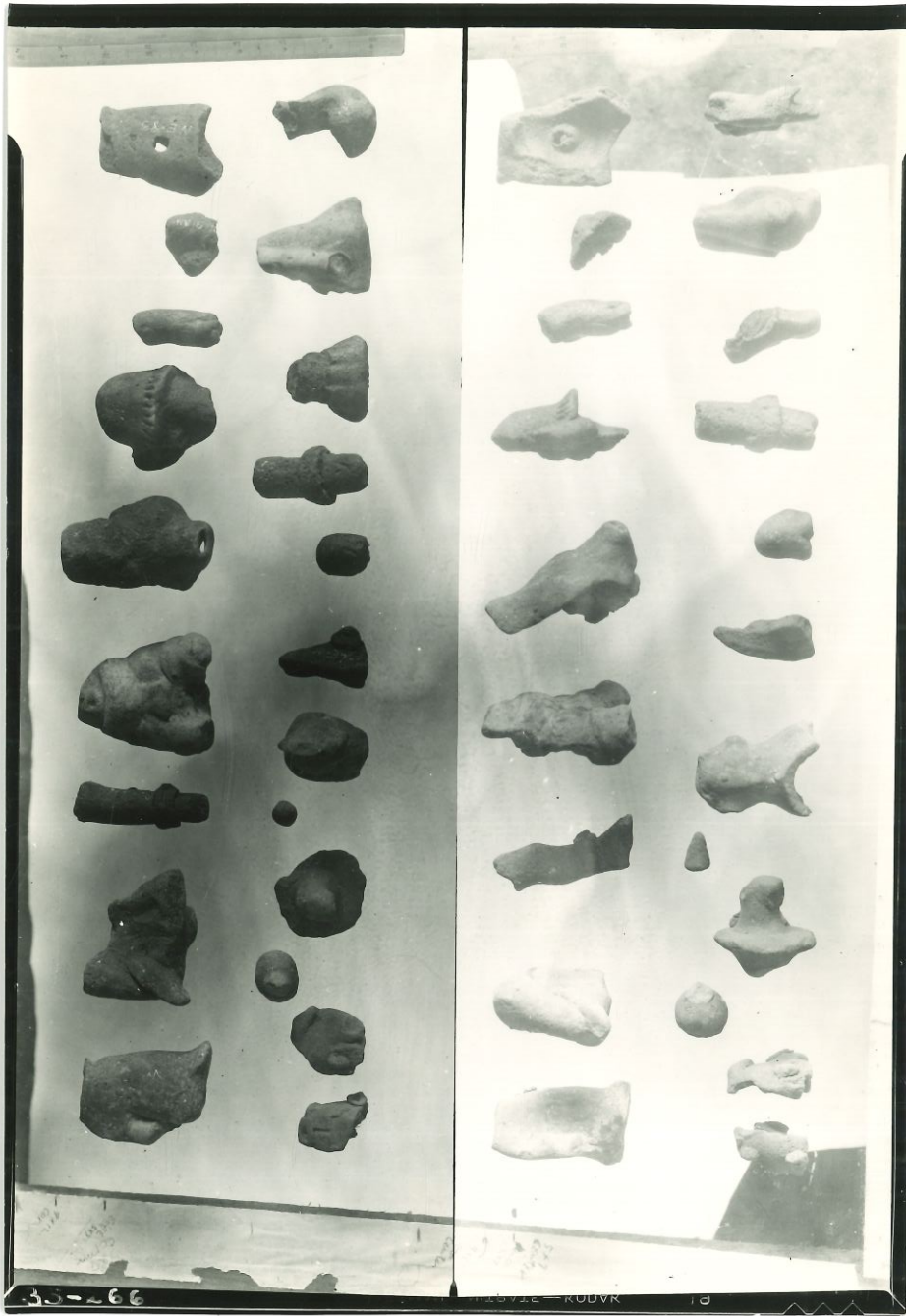
PN 35-265



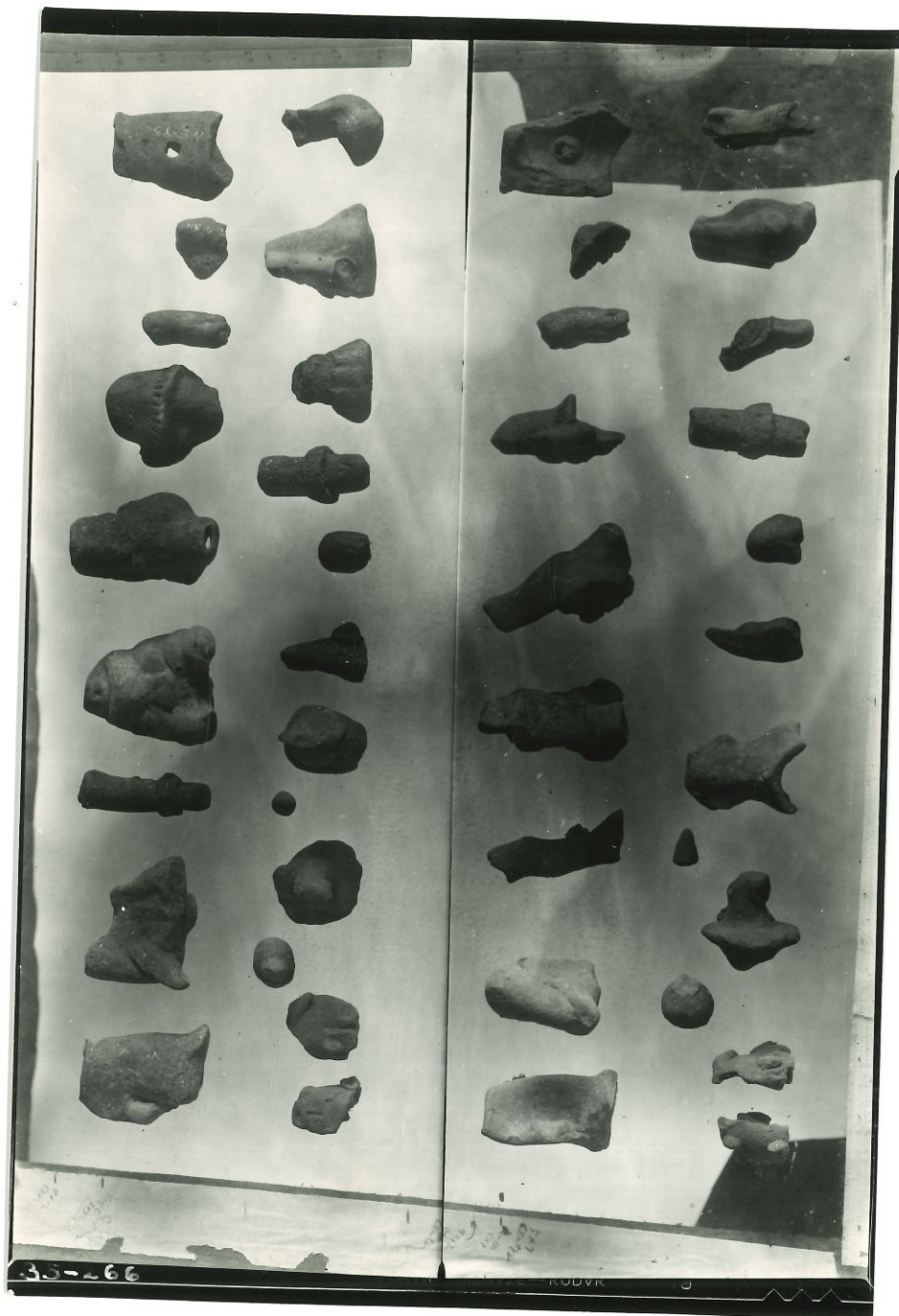
PN 35-265-



PN 35-260



PN35-266



PN 35-266







PN 35-268-6.



35-270-A

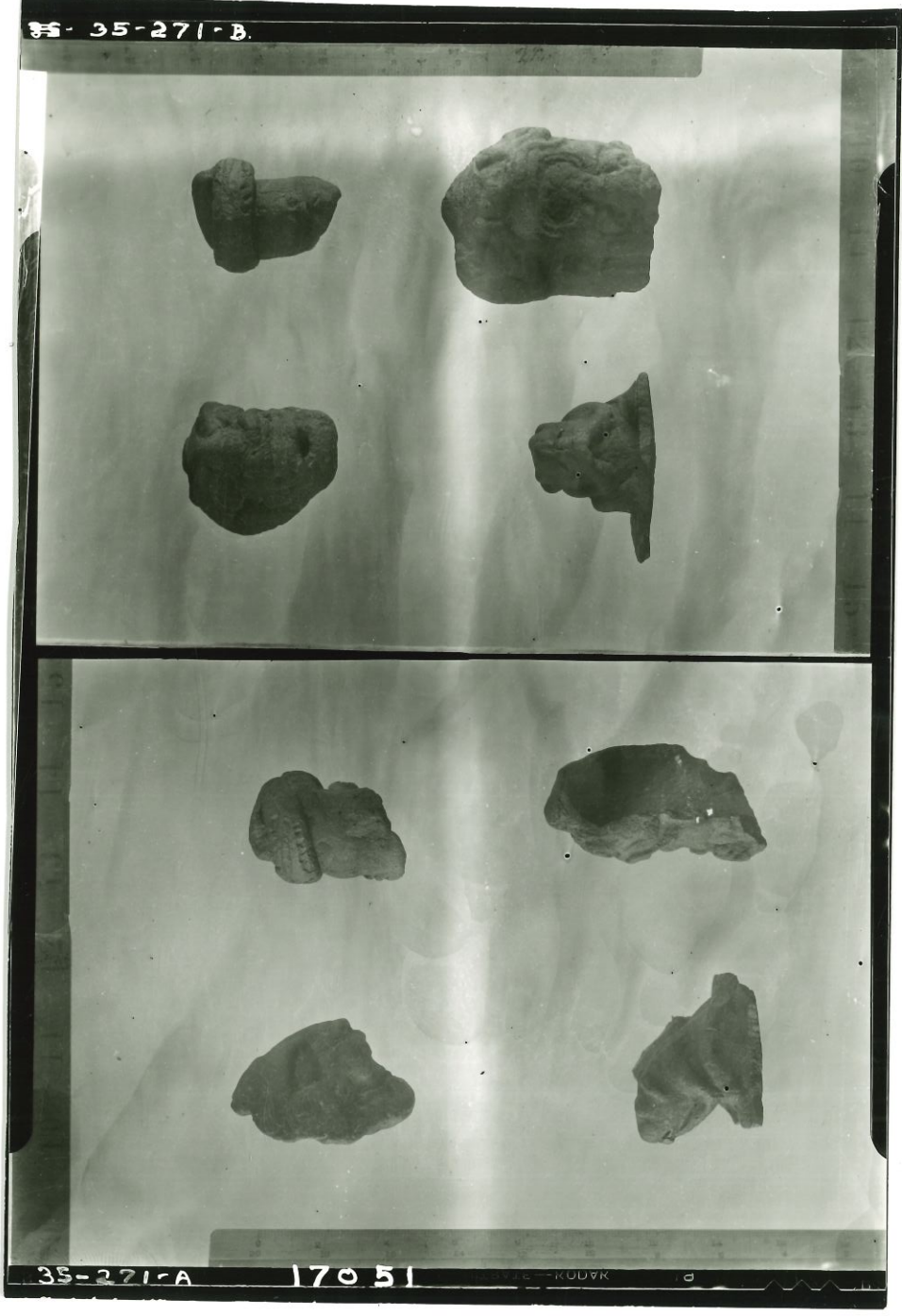
1020-ELABORATION

17050  
PN



PN 35-270-6

35-35-271-B

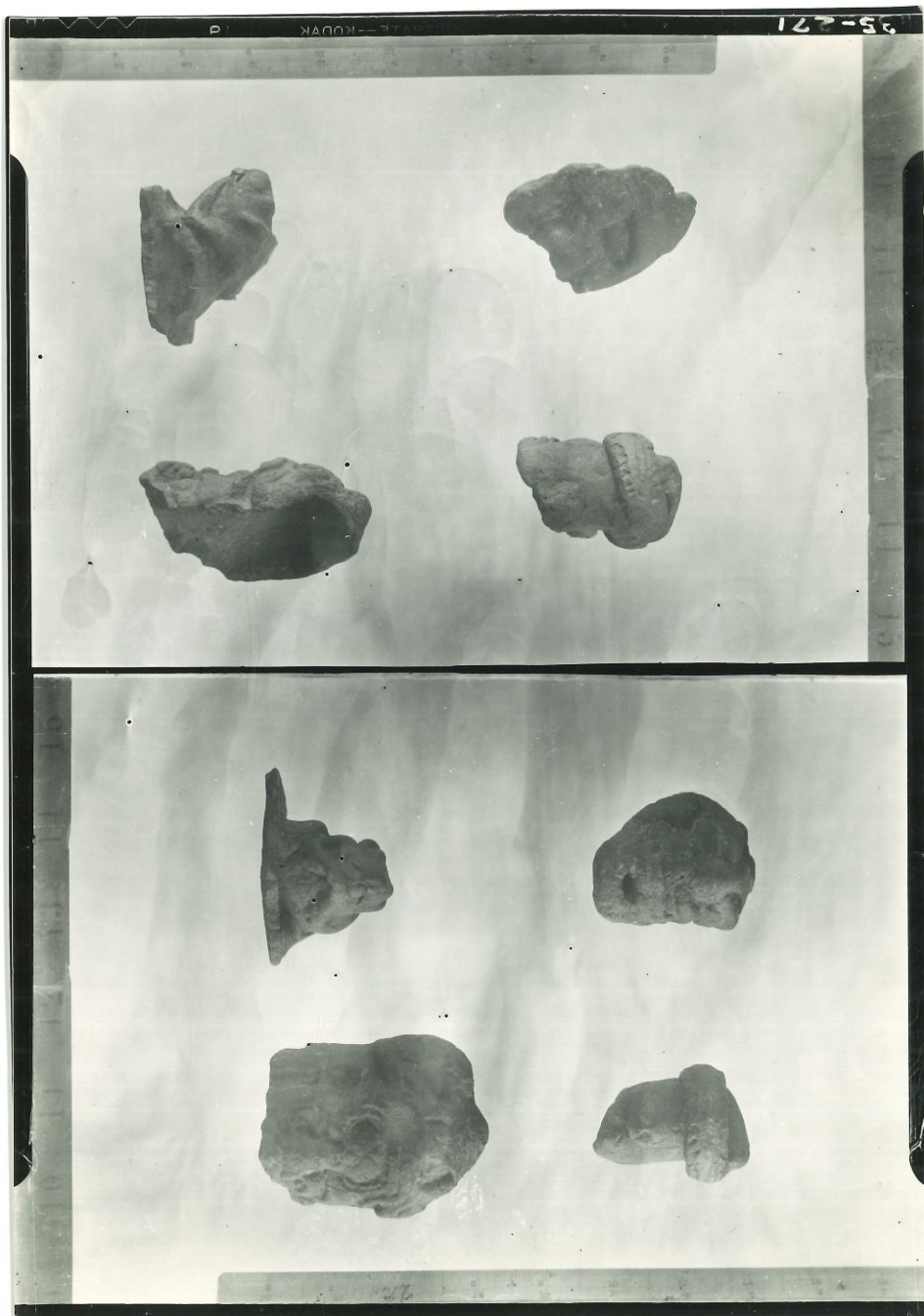


35-271-A

17051

KODAK

17051  
PN



PN 35-271-b

35-271-a



PN 35-268-a



35-268

KADOK—STANTON—MILBATE

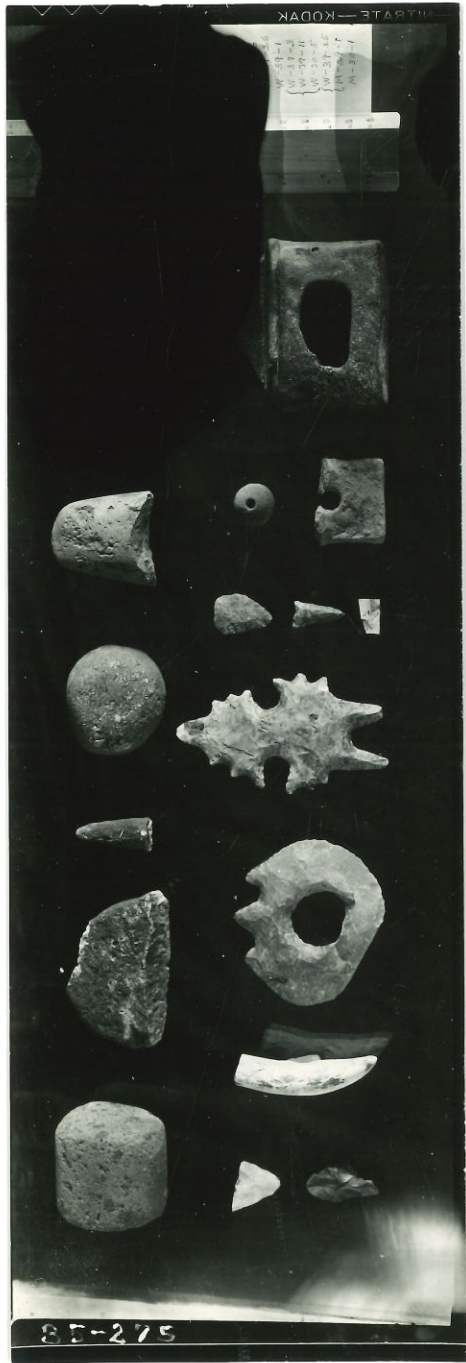
18

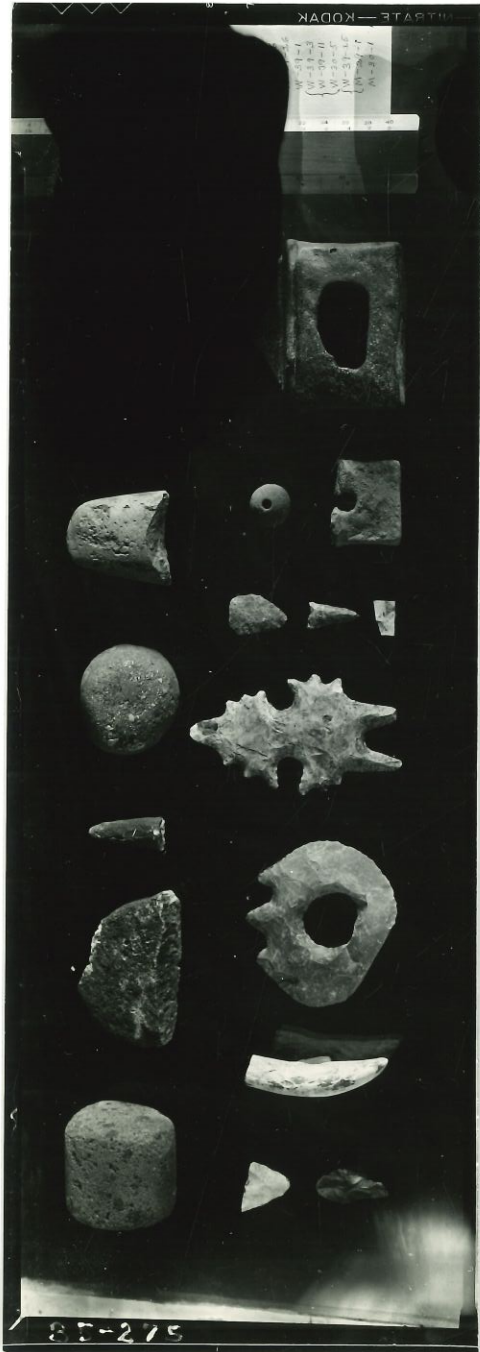
PN 35-268-a





PN35-272



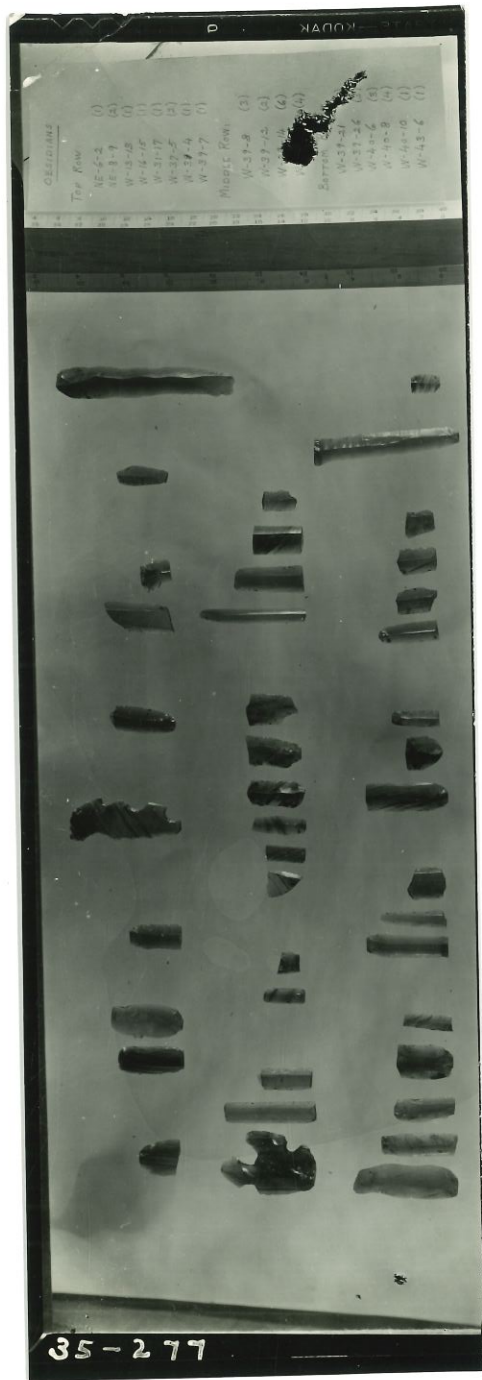


KODAK SAFETY FILM

1-10-37  
1-11-37  
1-12-37  
1-13-37  
1-14-37  
1-15-37  
1-16-37  
1-17-37  
1-18-37  
1-19-37  
1-20-37  
1-21-37  
1-22-37  
1-23-37  
1-24-37  
1-25-37  
1-26-37  
1-27-37  
1-28-37  
1-29-37  
1-30-37

87-279

PN 35-275



KODAK

35-277

0

1 2 3 4 5 6 7 8 9 10 11 12 13 14 15 16 17 18 19 20 21 22 23 24 25 26 27 28 29 30 31 32 33 34 35 36 37 38 39 40 41 42 43 44 45 46 47 48 49 50

CELESTINE

Top Row

W-2-2 (1)  
 W-3-9 (5)  
 W-4-8 (1)  
 W-4-15 (1)  
 W-21-7 (1)  
 W-22-5 (2)  
 W-24-9 (1)  
 W-27-7 (1)

Middle Row

W-31-8 (3)  
 W-37-12 (3)  
 W-38 (6)  
 W-39 (6)

Bottom

W-37-12 (3)  
 W-37-12 (3)  
 W-37-12 (3)  
 W-37-12 (3)  
 W-37-12 (3)

35-277



11

PN 35-281.



PN 85-293