



PT 34-1

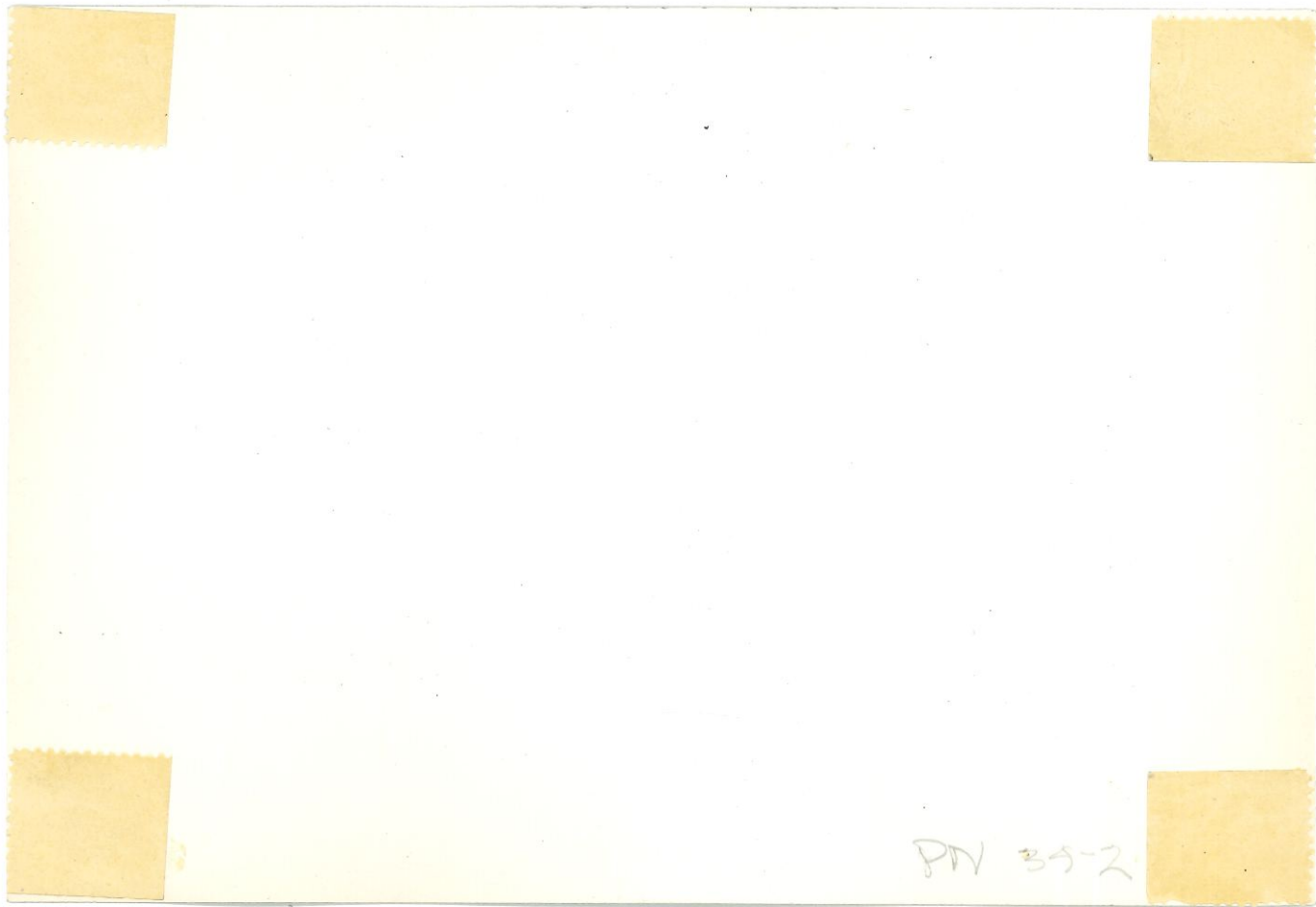


PN 39-1



01 11001-112511

2-48



PN 35-2



PN 34-A



344-4

PN 34-4



PN 39-4



7-14-3

PN 34-4



344-4

PN 35-4



34-4

PN 34-4



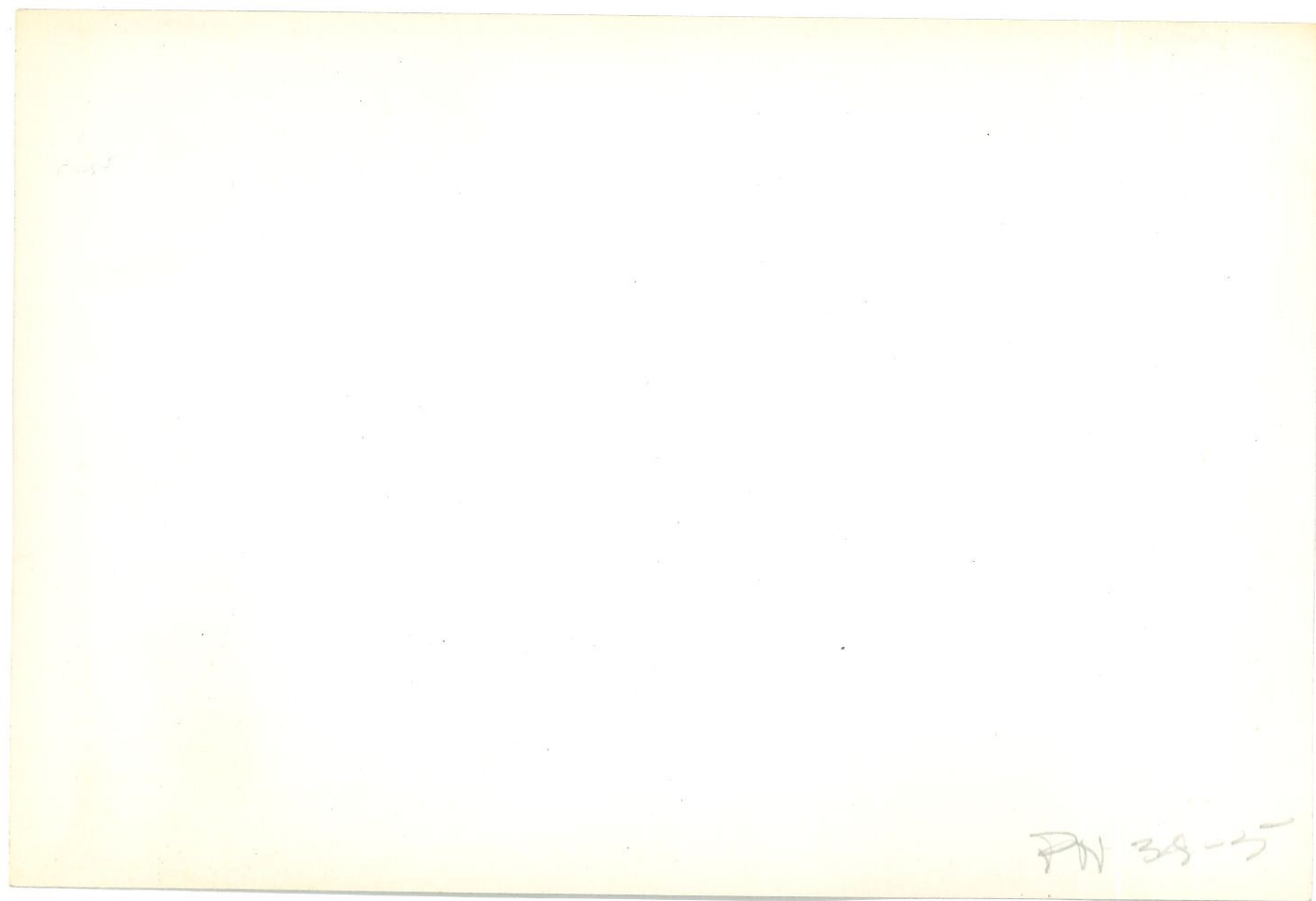
34-4

PN 35-4



PN 33-A





FN 38-5





PN 38-6



PN 3A-7



34-7

PN 34-7



PN 34-7

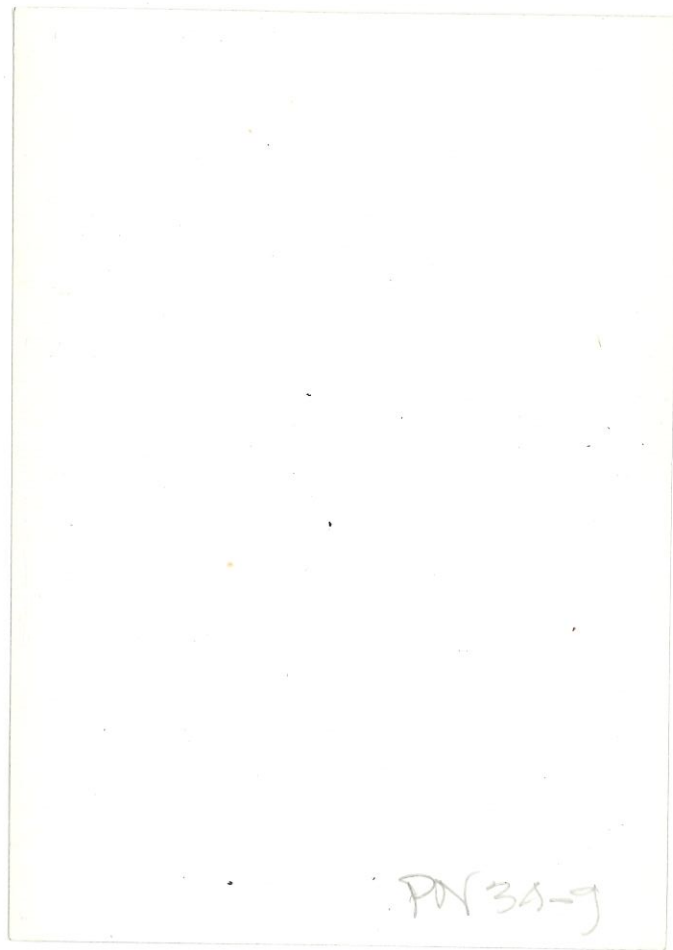


PN 3A-8



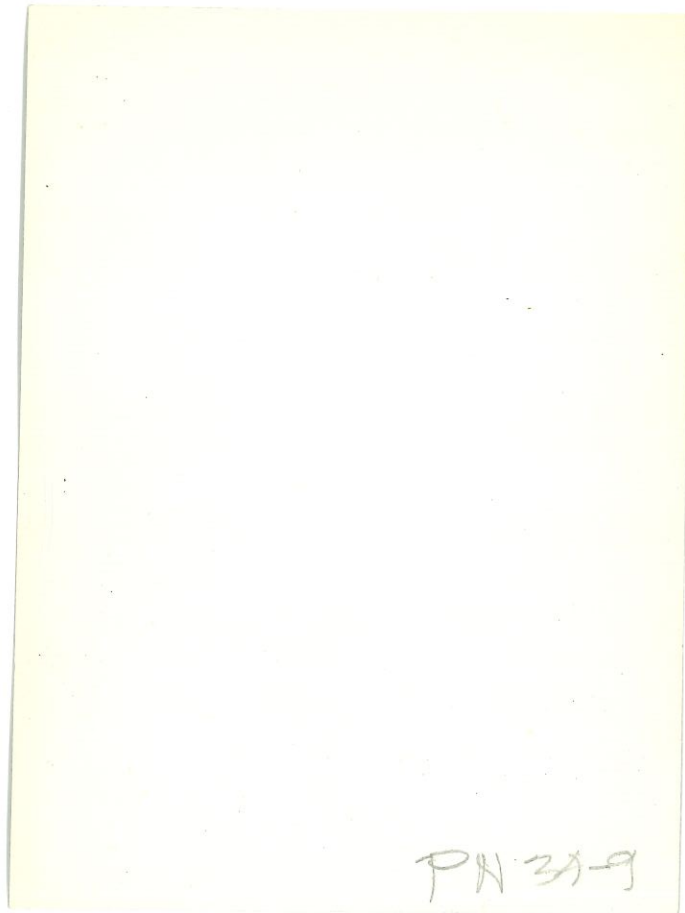
34-9

3



PN 3A-9





PN 31-9



34-9

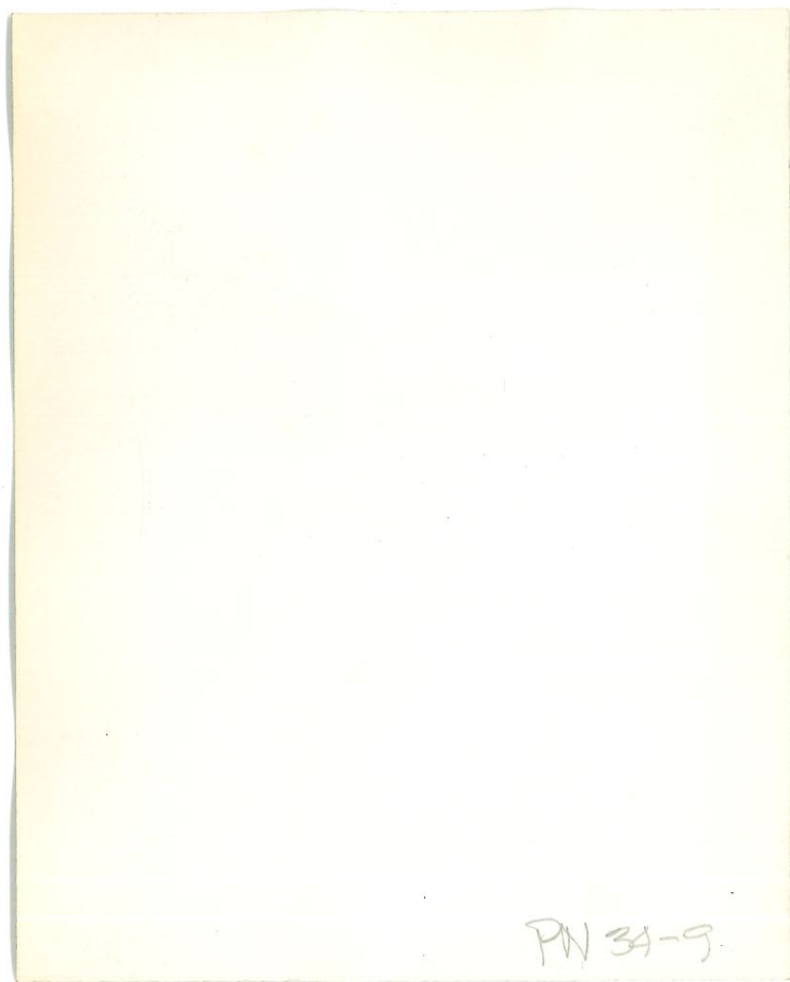
3

PN 34-9



34-9

3



PW 34-9.



34-9

3

PN 3A-9



34-9

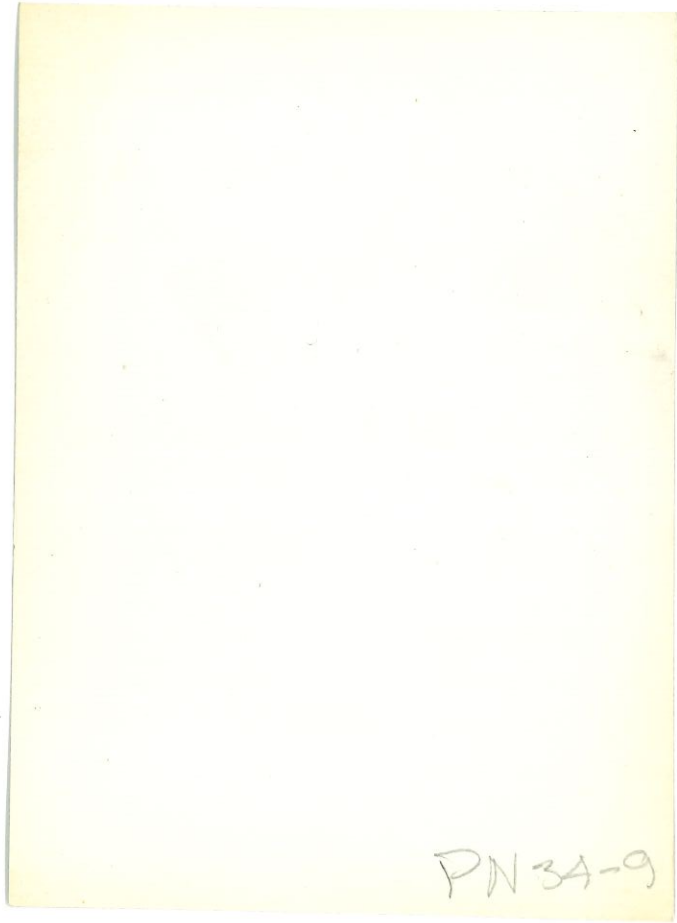
3

PN 34-9



34-9

3



PN 34-9



34-10

PN 34-10



34-10

PN 3A-10



FN 34-12



PN34-13



PN 3A-14



34-15

PN 3A-15



PN 34-16



37-16

PA 34-16



34-17

PN 3A-26





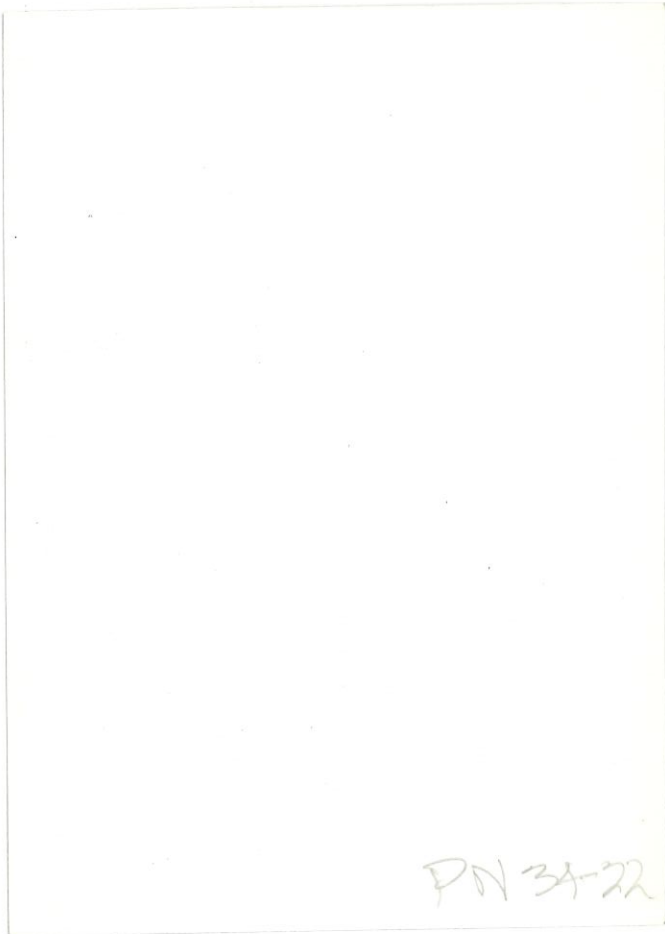


PN-3A-19



PN 3A-22





PN 34-22



PN3A-22



PN3A-22



PH 3A-23



PM 34-26



PN 34-26



34-26

2

PN 3A-26



34-26

PN 34-26



PN 3A-26



PN 34-28



PN 34-29



PN3A-3D



34-30

PA 38-30



34-30

PK 3A-30



34-32

7

PA 3A-32



FN 34-32



PN 34-34



PN 3A-33



37-31

PN 3A-36



34-37

WILSON - WILSON - WILSON

10 - 1

PN 34-37



JO

СЪЗДАНАТА — ПИЛВАТА — КОДЪК

34-28

PN 34-38



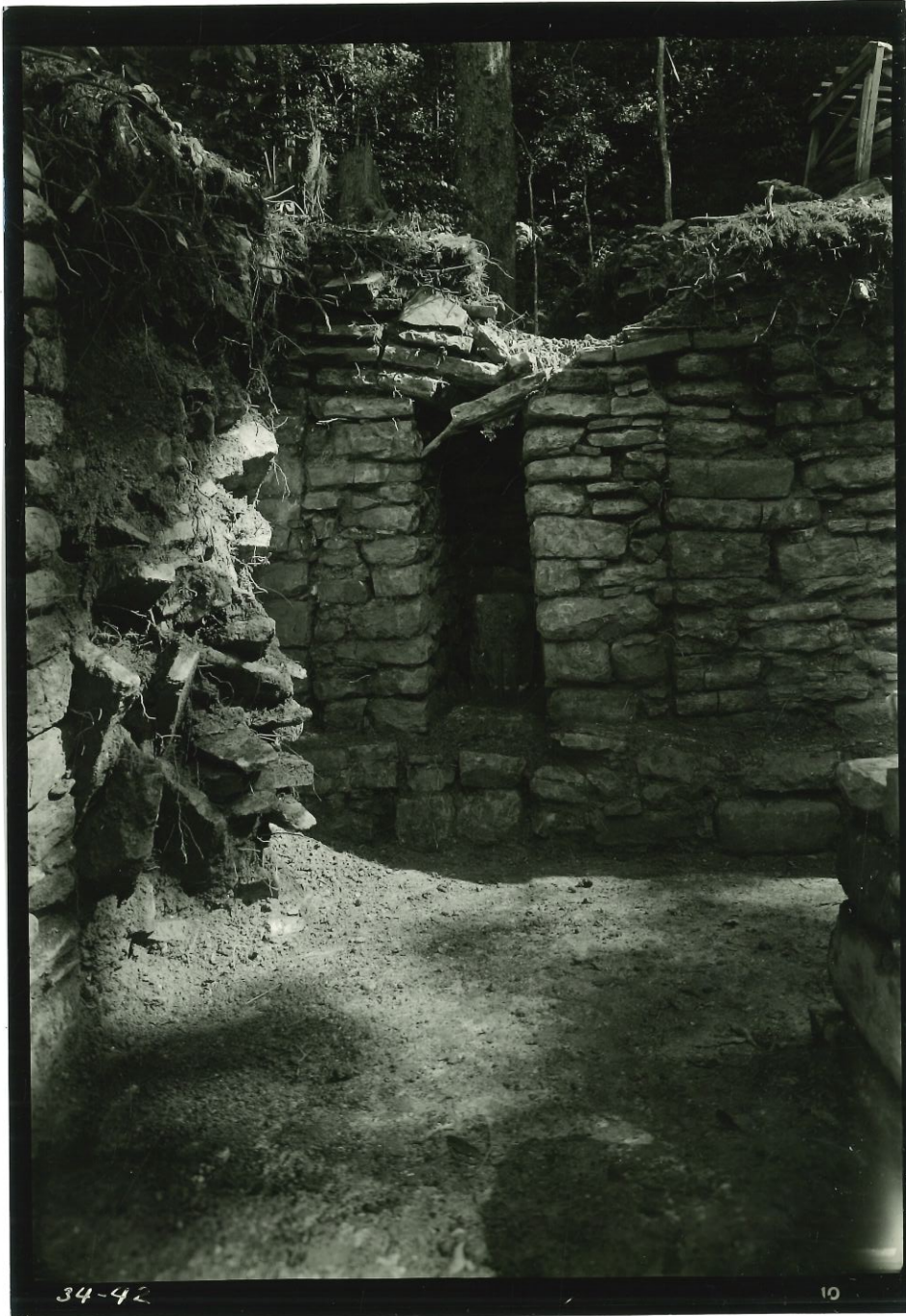
PN 34-40



34-41

12

PN39-41



34-42

10

PN 34-42

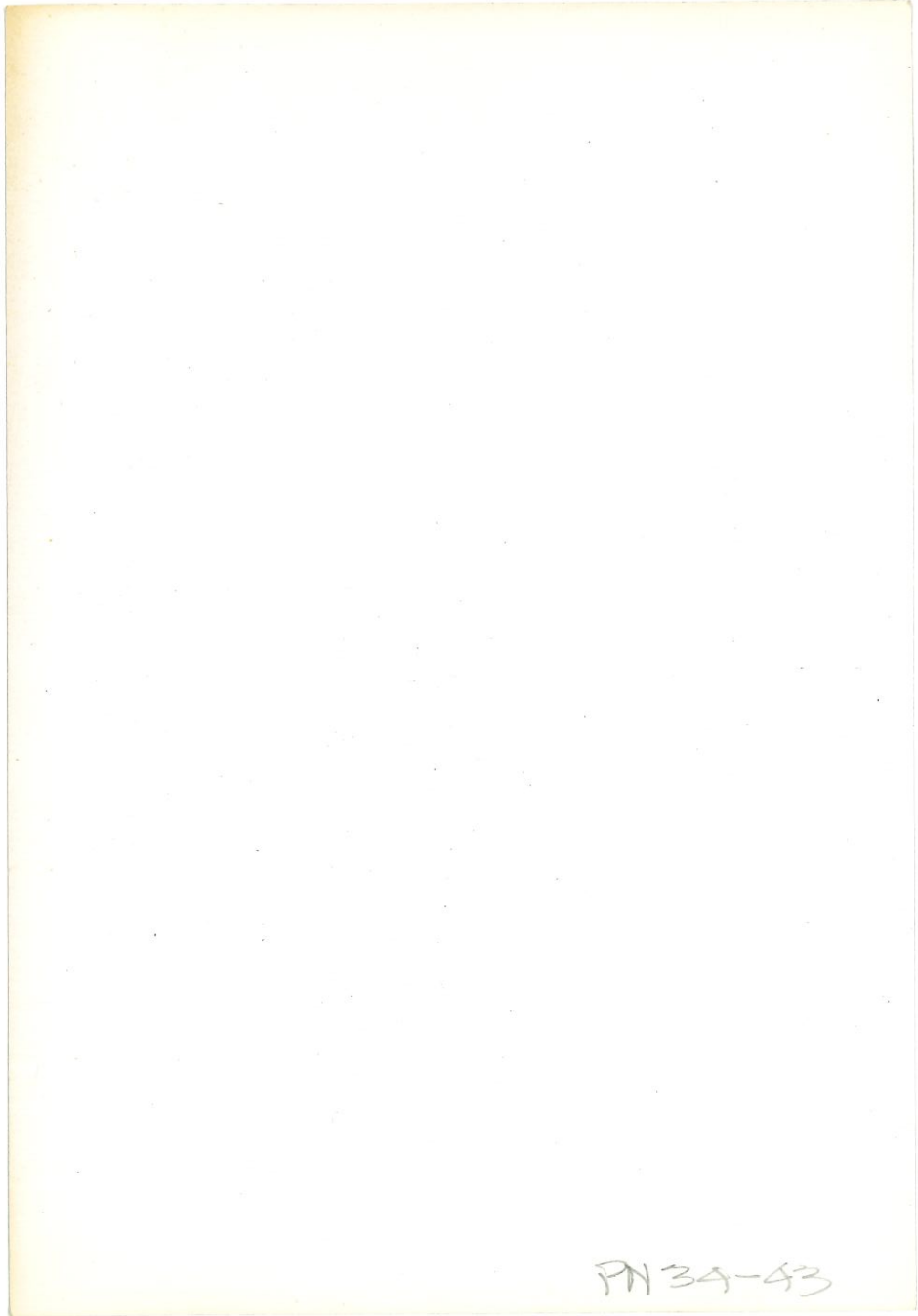


PN 34-53

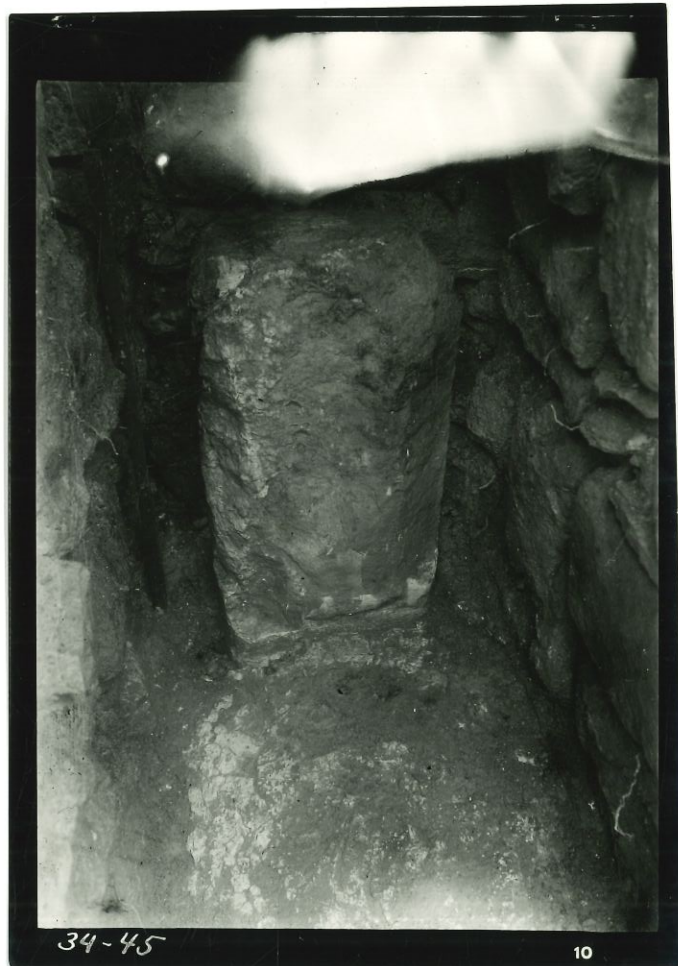


PN 34-43





PN 34-43



34-45

10

PN 34-45



PN 3A-47



PN 3A-47



PN 3A-98



PN 3A-49



PN 34-50



PN 38-50



34-50

PN 3A-50



PN 34-50



3450

1

PN 3A-50



FN 3A-52



PN 3A-53



PN 34-5A



34-57

6

PN 3A-57



34-53

7

PN 3A-58



34-57

8

PN 34-59



34-60

9

PN 3A-60



34-61

PN 34-61



PA 34-63



PW 3A-63



PN 34-6A



34-65

8



RN 34-65



34-97

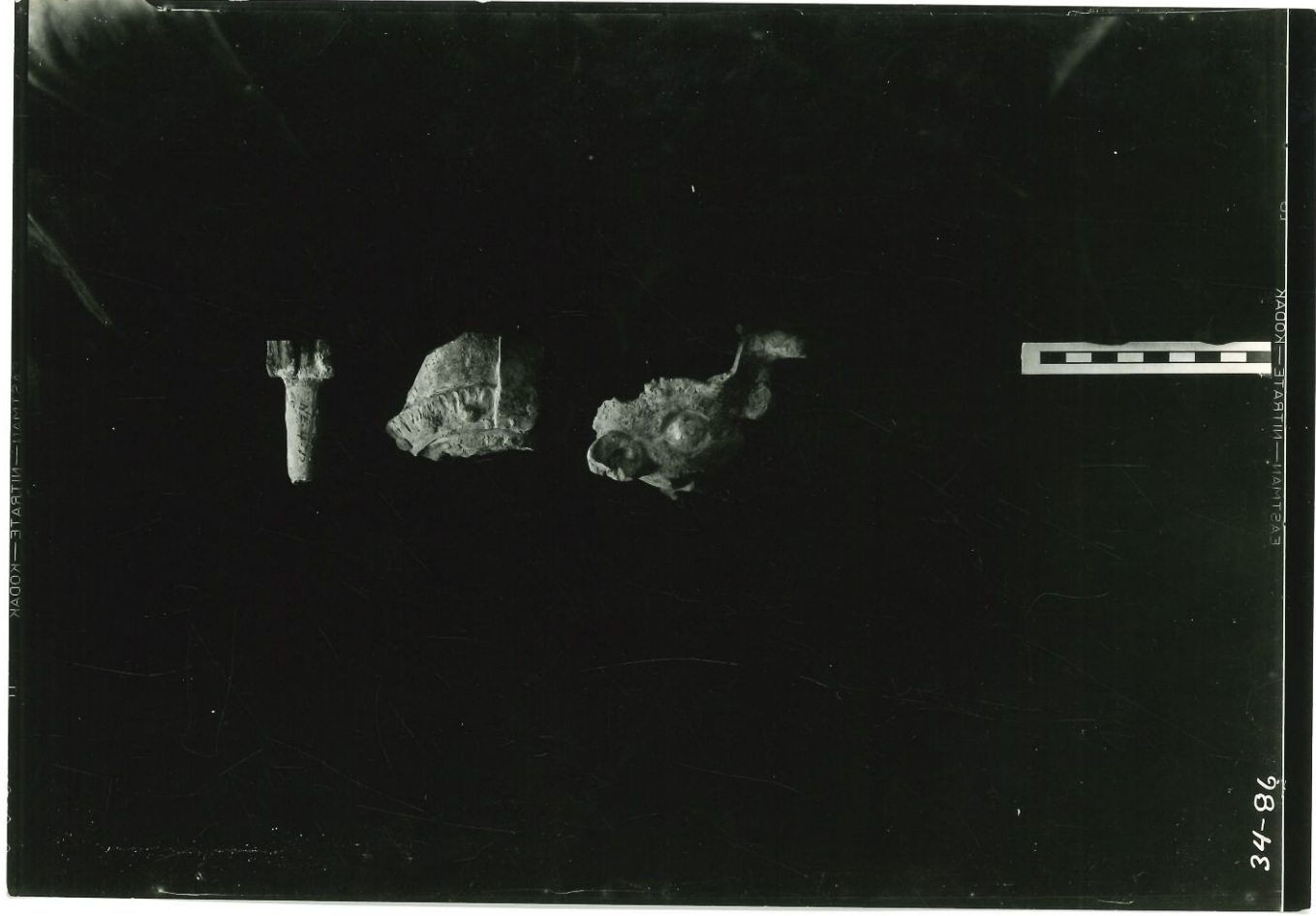
10

PN 34-77



34-78

PH 3A-78



34-86

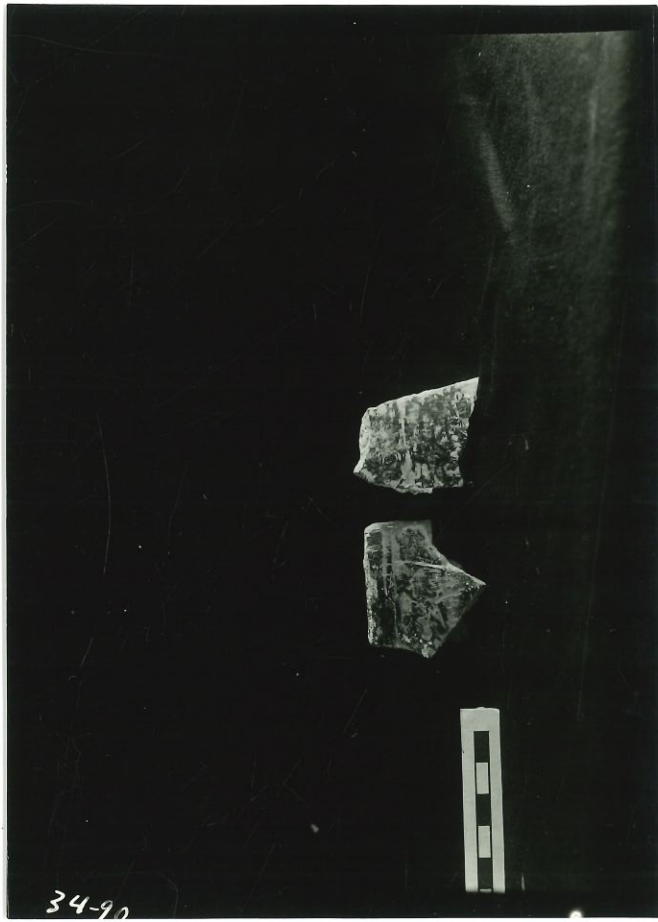
EV21111-111111-KODAK

EV21111-111111-KODAK



34-07

MAJDAK - EL ANASSIR - MARI (25)







PN34-91



PN 34-92



34-93

PN 34-93

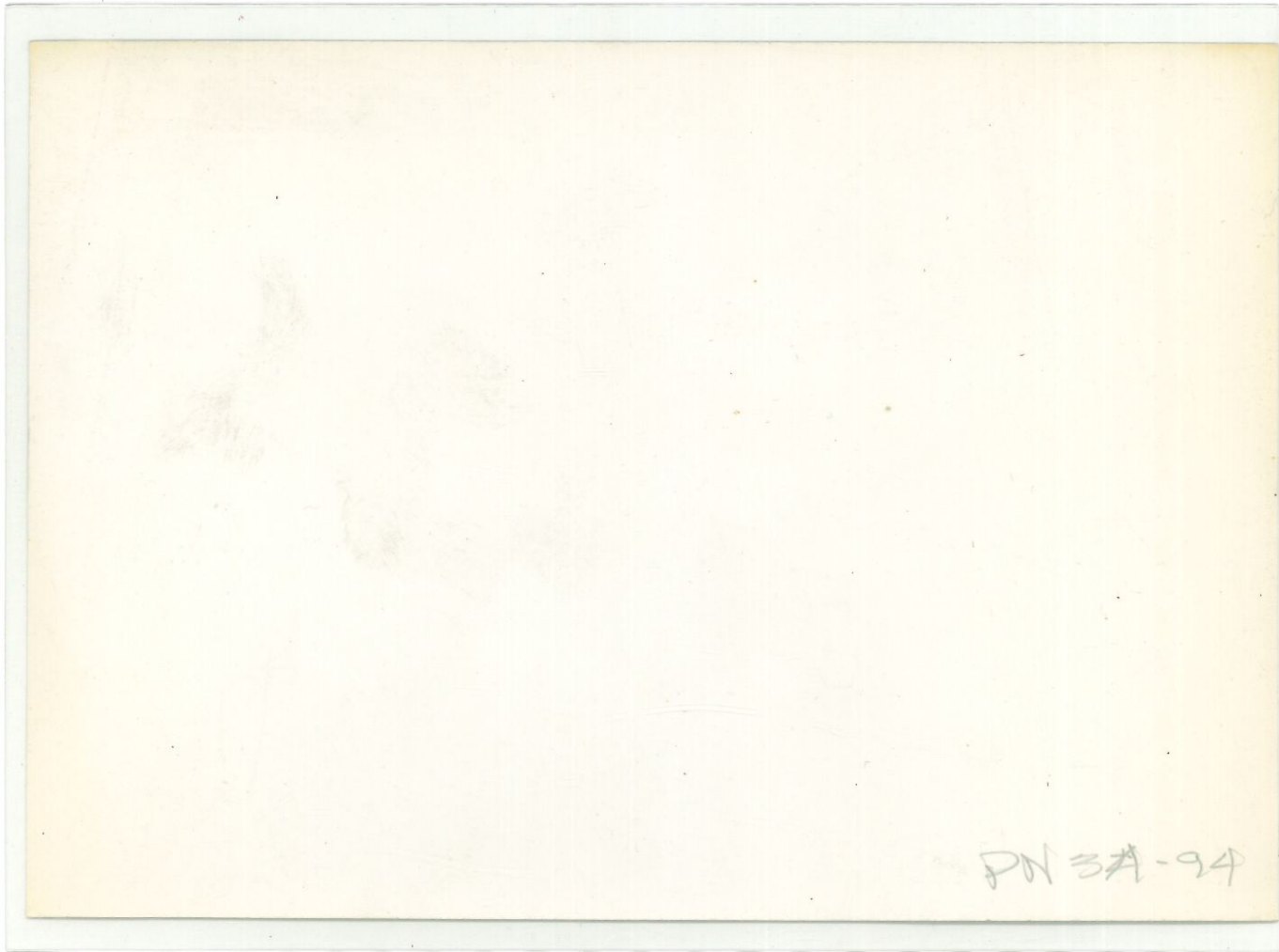






Guatemala





PN 3A-94



PN 34-94
16621



PN 3A-94
16621



PNV 34-95



34-97

PN 34-97



PW 34-97



34-97

PN 34-97



34-159

7. PN 34-1



34-98

PN 34-98



34-98

98

dup.
man

PN3A-98



OF
KADOKY—STATION—LIGHTS

84-73

PN 34-99



JOHANNESBURG — KODAK

34-99

TON-34-99



34-100

EVGENTII—KADOKI—

TO

PN 34-100