



Tikal. Preparing to cast  
replicas of carved  
wooden lintel-beams  
from Temple 1.





Linton Satterthwaite  
with David H. Kolloch<sup>III</sup>

~~holding~~ a check book for  
description of what  
they're doing

president  
of the  
Philadelphia  
Rosins Co.

in Flourtown,  
Pa. Picture  
was made in  
museum. His  
rosins are being used  
in reconstruction of the temple.





200

201

Steps (4, Ragslets does)



15660



15674



15675

158

172

173



175934



175938



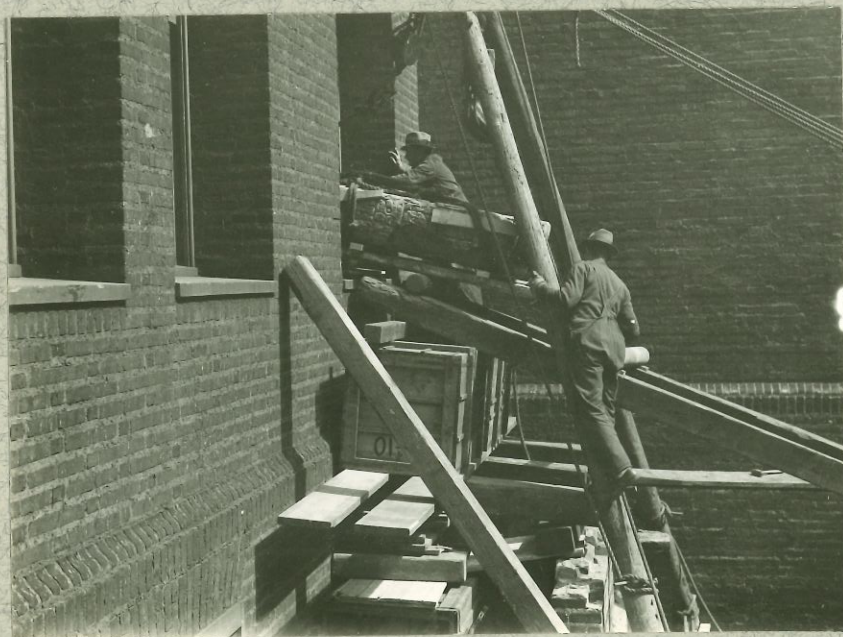
175933

Moving monuments, b. no. 1933

Piedras Negras  
Guatemala.



175935



175937

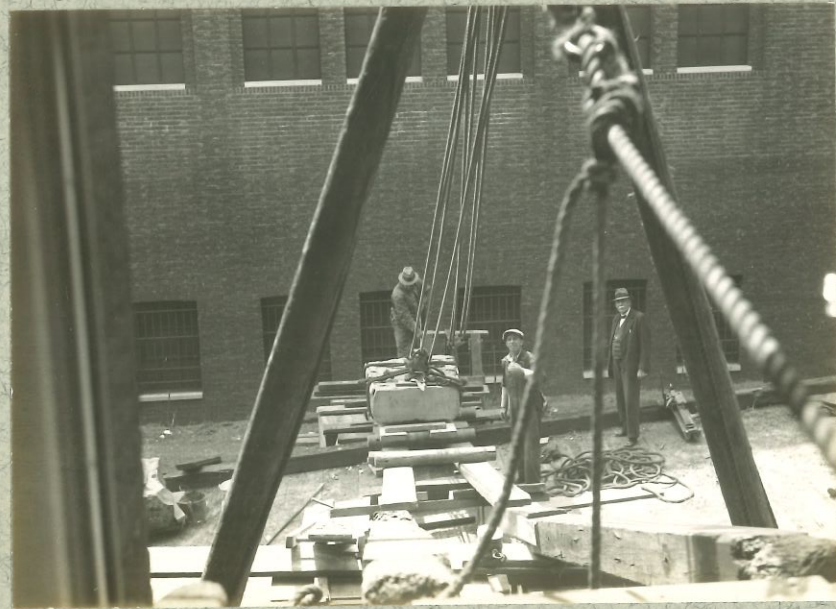


175936

Moving monuments, Pholo, 1933

ALTAR 4?

Piedras Negras  
Guatemala.



Moving monument, Philadelphia, 1933.  
Stela 467

Piedras Negras  
Guatemala



use plus



159

15661

160

15662



178

32-M-117

176

32-M-118



32-M-126

32-M-129

32-M-128

32-M-127



A



B



C

Negatives of David Aronson Jr

- A. Boring lower half of stela 40
- B. Arranging derrick to load stela 6
- C. Lifting large half of stela 40

Piedras Negras

Guatemala

1932

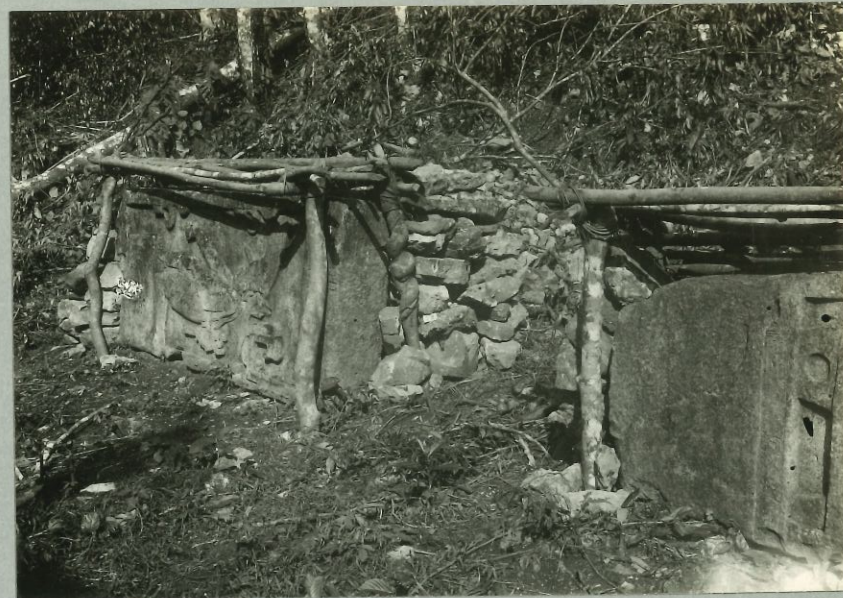


198 197



184 136

167 108



182

262

174

'31-117



'31-98

166

'31-96

'31-97