

52

64



32-5-54



'31-119 ?

5-49

(46)

32-5-81

32-5-172

(46)

(46)



32-M-19



32-M-95

32-M-95

Pyramid K-5, unexcavated side
from west, showing stela 38 to left
and 39 to right.

32-M-19

Steps or great stairway K-2,
connecting East and West Group Plaza



M-5

'32-M-6



32-M-33

32-M-33

Structure K-5-3d, after ~~copy~~ nearly final excavation. Looking north and northwest, from southern corner. From left to right: front steps, plinth, front wall, entrance and pier (only left half of structure was cleared), floor, wall of rock-fill showing opening with pillar-stone, bench and rear wall. At middle height, portion of floor of K-5-2d with pillar stone in place at base of poles. Front pier of K-5 supported by poles and rear wall of K-5 at upper center.



32-M-94



32-S-8



32-S-93



32-S-185

32-M-94

Four pillar or altar-stones from pyramid K-5.
Left two from ~~1st~~ structure K-5, 3d from
structure K-5-2d, 4th from structure K-5-3d.

32-S-8

(Get information from Satterthwaite)

32-S-93

Wall of pure rock fill in structure K-5-3d
showing method of filling older structures
in sections.

32-S-185

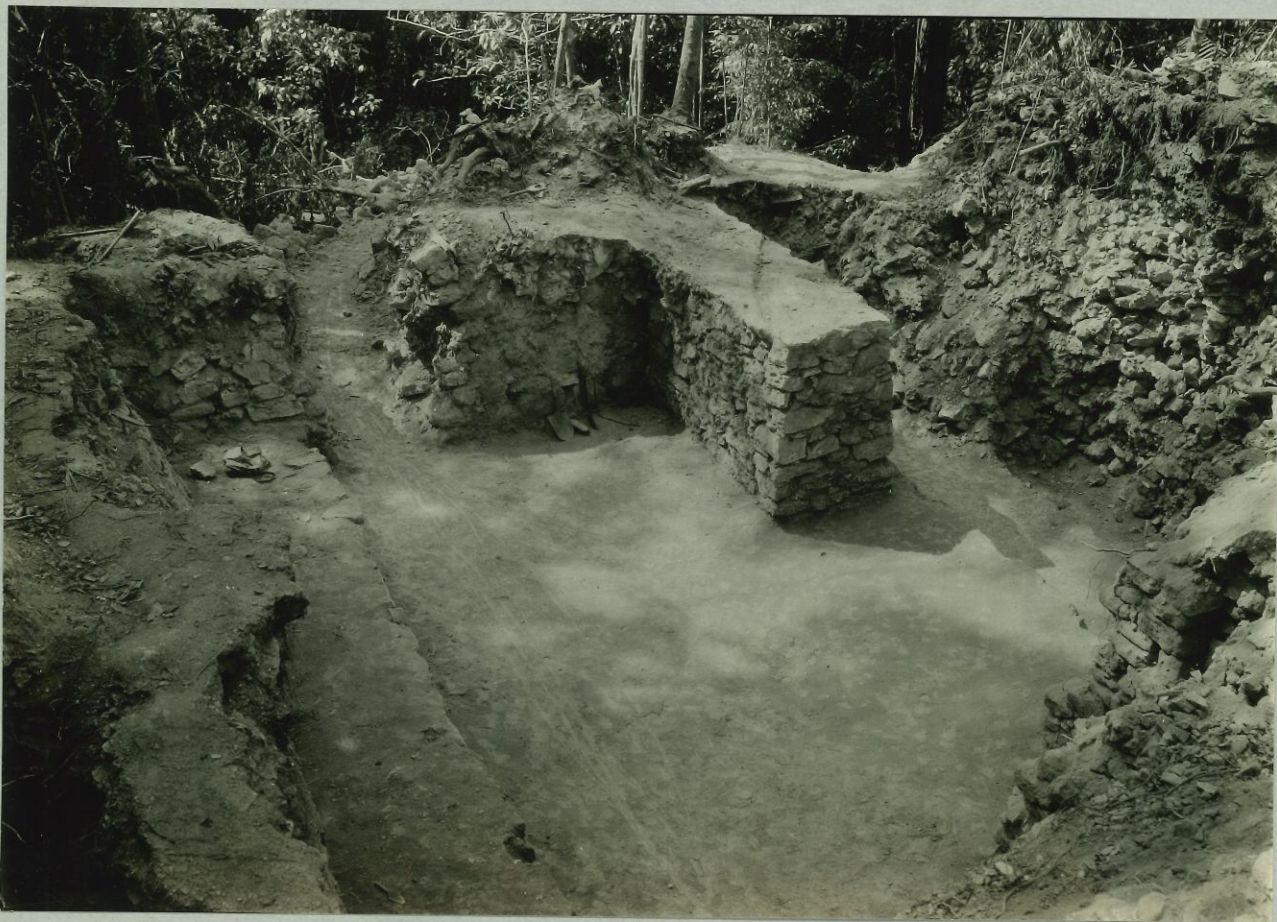
Worked stones from pyramid O-13, utilized in
masonry.



32-14-32



32-M-30



32-M-31

32-M-30

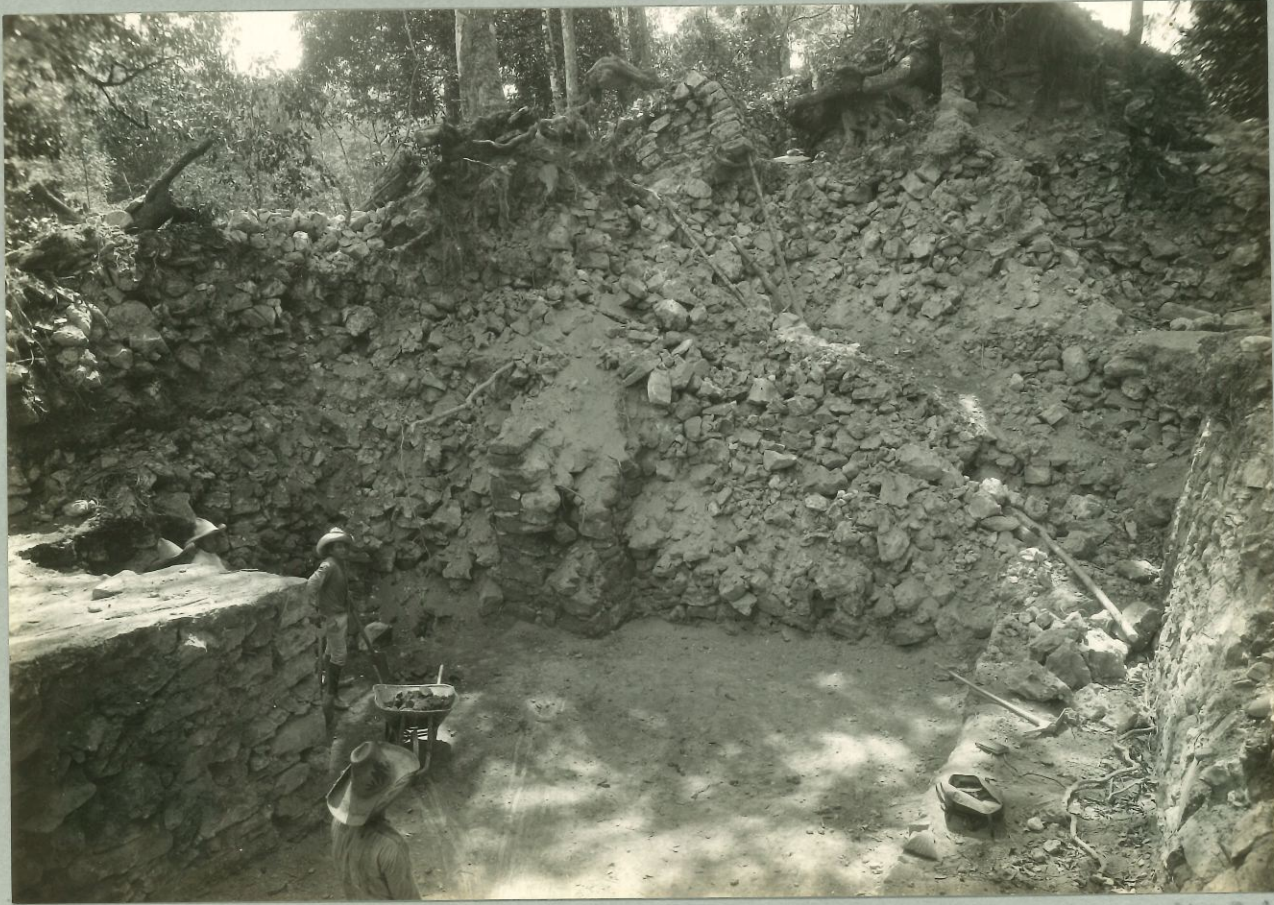
Structure K-5-3d. Rear wall and southe^ast
side wall, and bench before complete exca-
vation.

32-M-31

Structure K-5-3d, after nearly complete excava-
tion. Looking east. Rear wall and bench at
left; side wall with breach made for dispos^al
of debris at left center; ~~left~~ left section
of front wall at center; left entrance with
step beyond it at right center; left pier
at lower right.



32-M-29



32-M-34

32-M-29

Structure K-5-3d from northwest, before complete excavation, showing rear wall, southeast side wall and bench. At lower left, portion of floor of K-5-2d; at upper right, front pier, wall and floor of K-5.

32-M-34

Structure K-5-3d, looking west, nearing final excavation. Left portion of front wall at left; left pier at left center; rear wall and bench at lower right; portion of wall of rock-fill in center; part of floor of K-5-2d at right center; front pier and rear wall of K-5 at upper center.



32-M-96



32-M-97

32-M-96

Structure K-5-3d, looking northwest, showing rear wall at right; bench (not completely excavated) in right foreground; floor of K-5-2d at middle height; rear wall of K-5 in upper center; front pier of K-5 at upper left.

32-M-97

Structure K-5-3d, before complete excavation, looking southeast from summit, showing rear wall, southeast side wall, and bench.

*do not use
in final text*



31-24



31-22

31-24

Temple K-5, looking towards
left or southeast end. Rear niche
at left, left wall in center, piers,
entrances and front wall to right.

31-22

Temple K-5, looking towards
right front. Right pier, right
entrance, right front wall, and
right side wall.



31-23



31-25

31-23

Temple K-5, looking towards
right or northwest end. At right,
niche which contained pillar-stone;
in background, end of room; at left,
two front piers with entrances, and
right section of front wall.

31-25

Temple K-5, looking towards
rear or northeast. Niche with pillar
stone in position.



123

196

P-7



34

35