

Photographs

Piedras Negras
1932
Linda Pallerin
Parsonal

PN (P-2)
1932



32-S-121

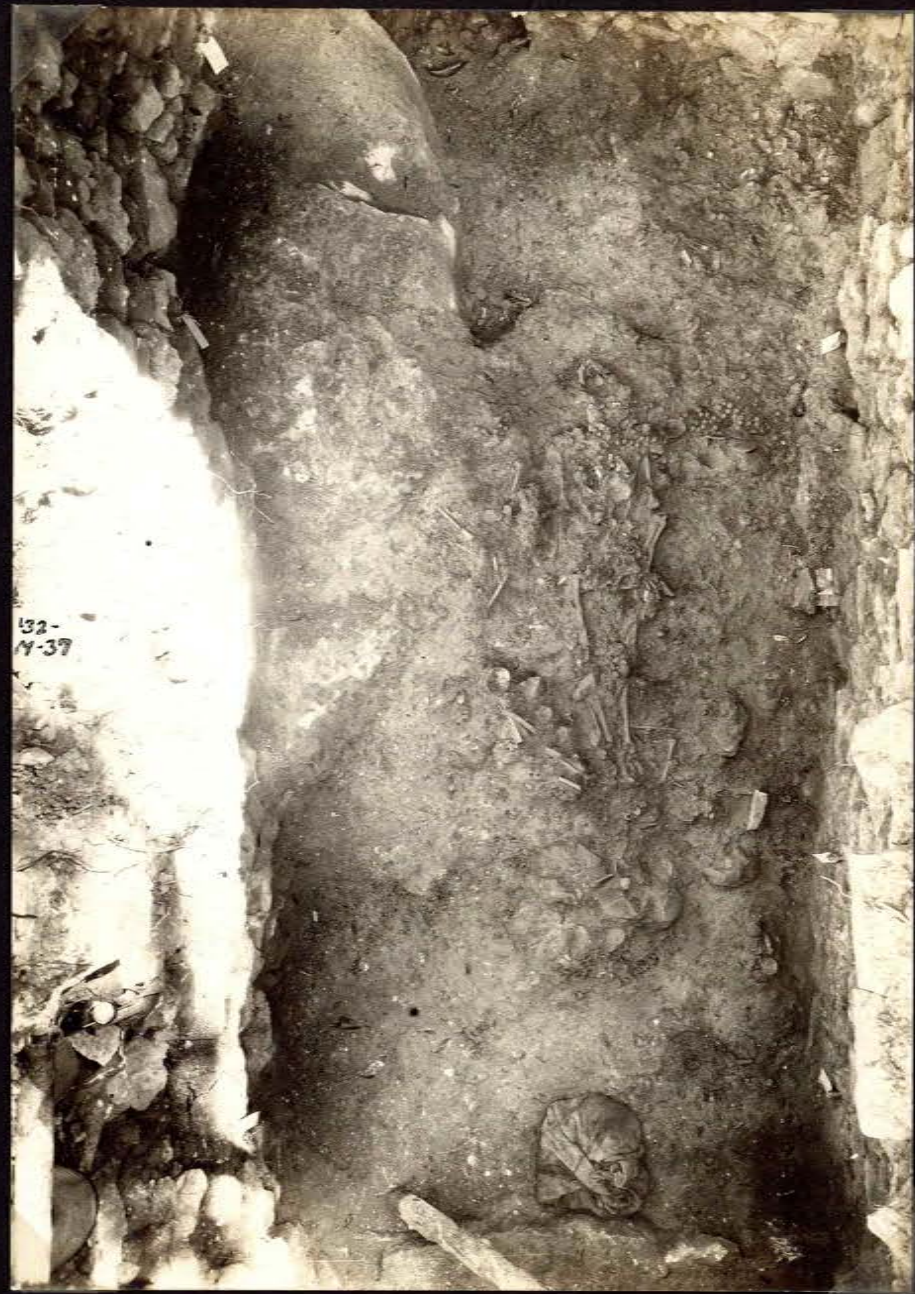


32-S-122



32-M-35

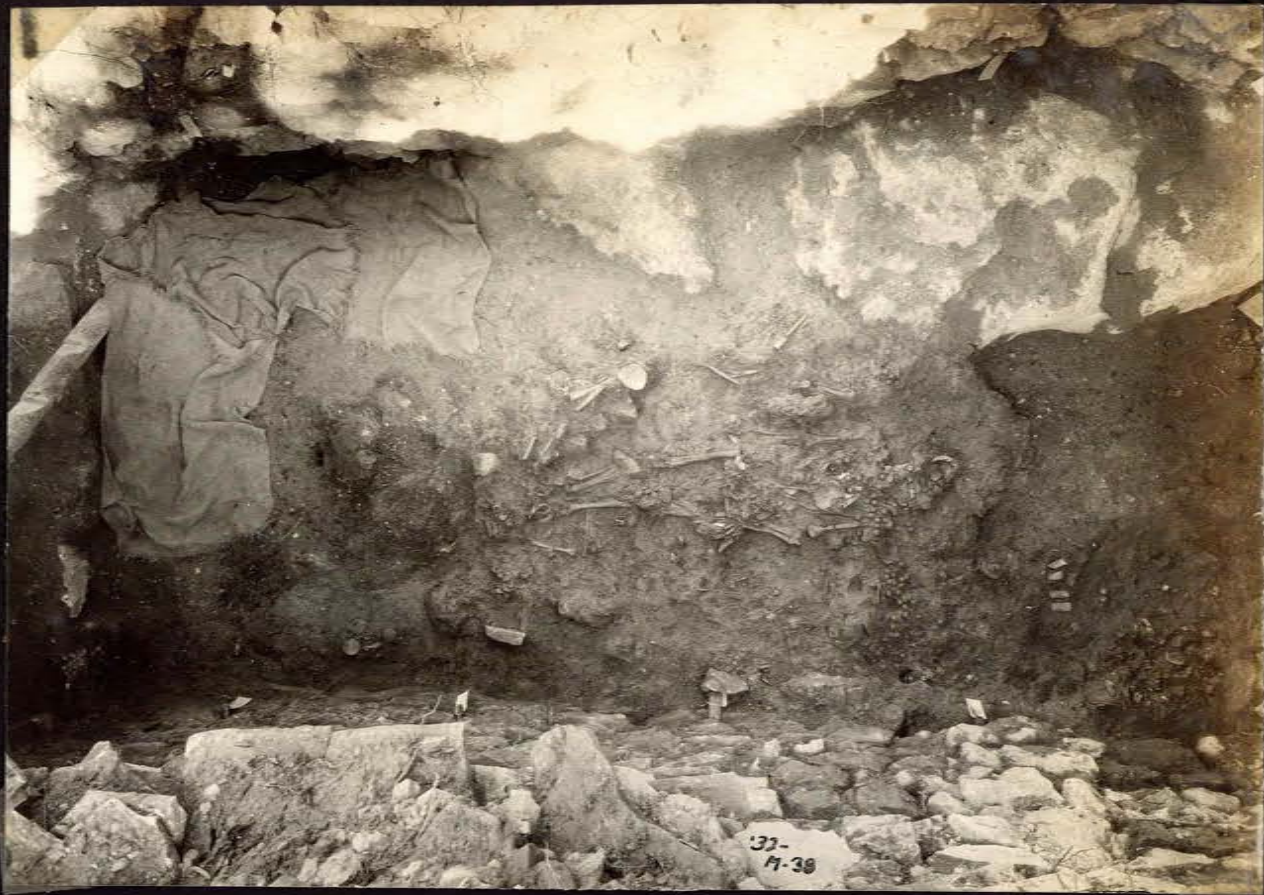




19468

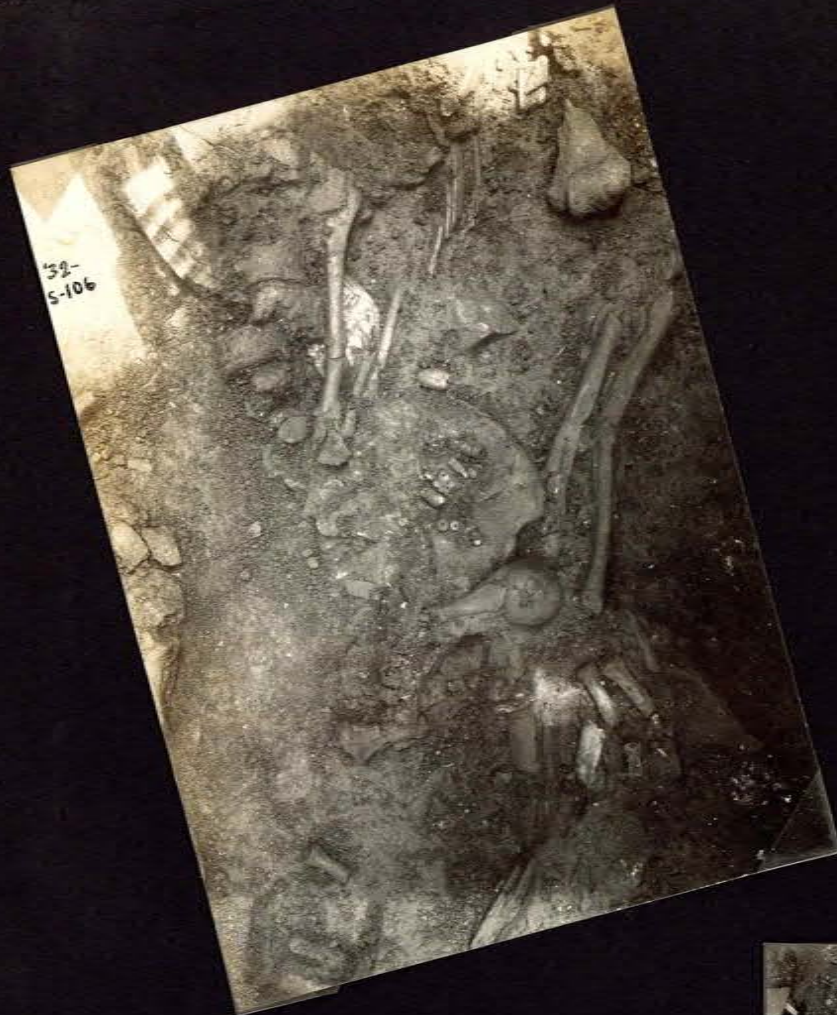


16091 ↑



194107

194111





71



7







32-M-32



32-M-33



M-135



32-M-34





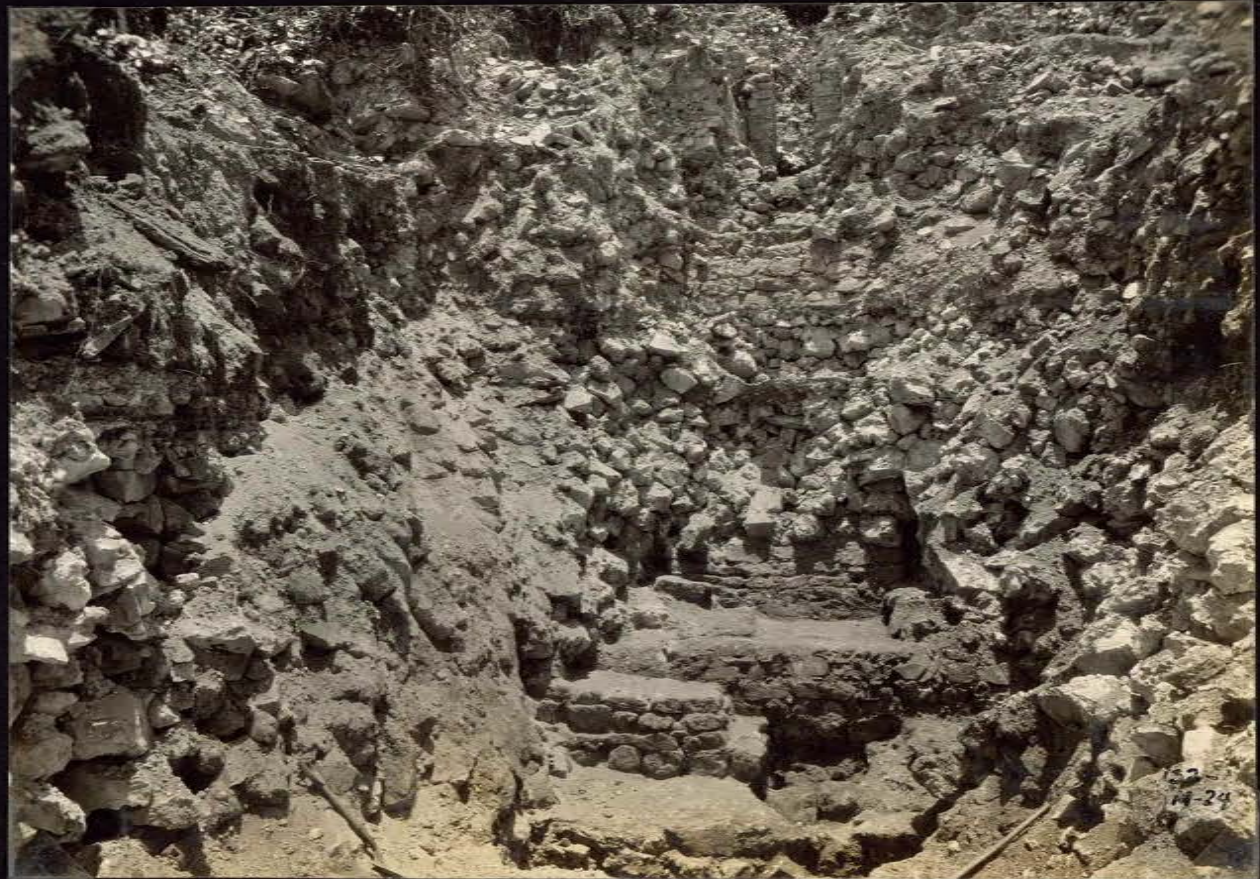
'32-M-21

32-m-23 Pb Stwy
Oud to Tent



'32-M-22

E. of Plaza



'32-M-24



'32-M-25



'32-M-26





Paved Court,
base of Str. 27



32-
S-132



32-S-119



32-S-120



32-S-131



32-S-96



32-
S-128



31-S-129



32-S-130



32-S-91



32-S-90



32-M-17



32-5-116

'32-5-95



152 N. 12

29th S. Court.



132 N. 13





132-M-8



132-S-52





32-A-9



32-A-10



32-A-11

Sip. Ct. St. 24 in foreground





32 M-1



'32

S-182

S-182

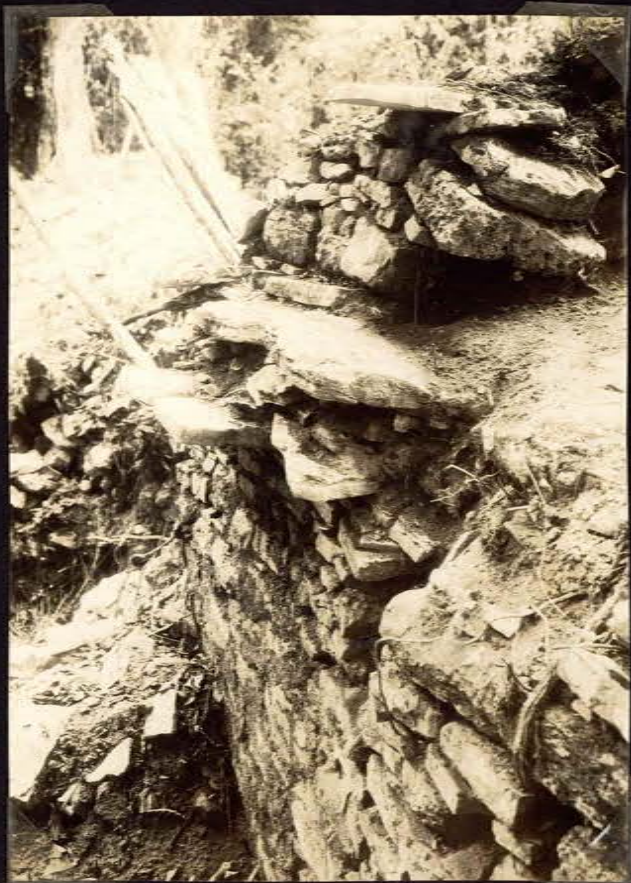


'32 - M-2



'32

S-181





32-M-138
32-M-138



32-S-176
32-S-176



32-S-23



32-S-26





32-
S-20



32-S-58



32-S-172



32-S-171





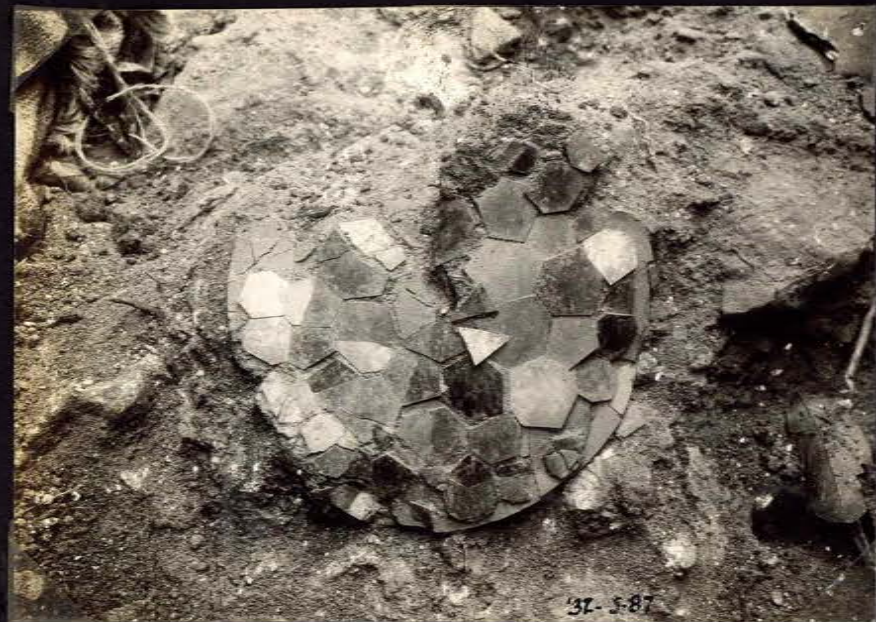


32-S-66



32-S-88

194110



32-S-87

194109



32-S-89



51





Tablet
T. 11. 1. 1.



Left 2.



Right Panel

55







5-22



32-S-24



32-S-25



32-S-28



32-S-31

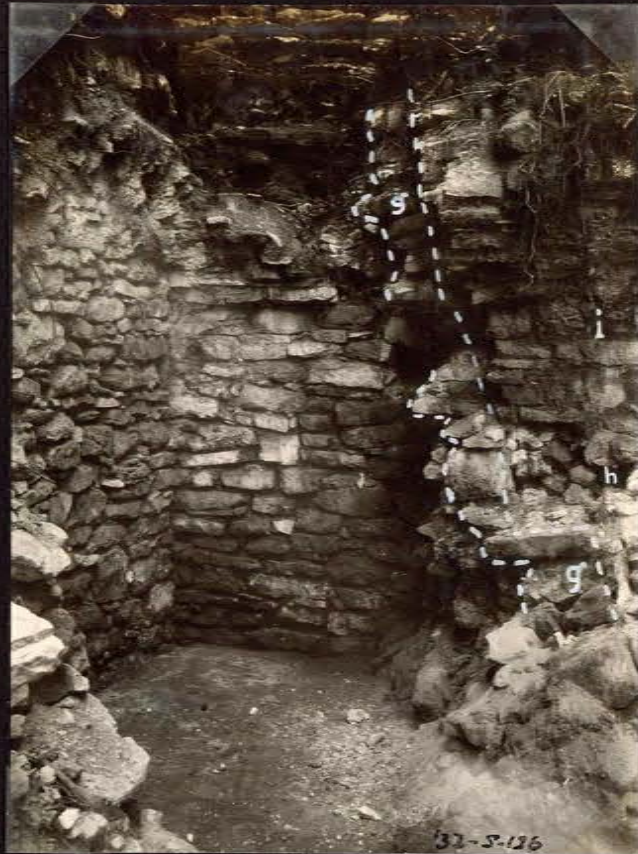


32-S-34





32-S-140



32-S-136



32-S-19

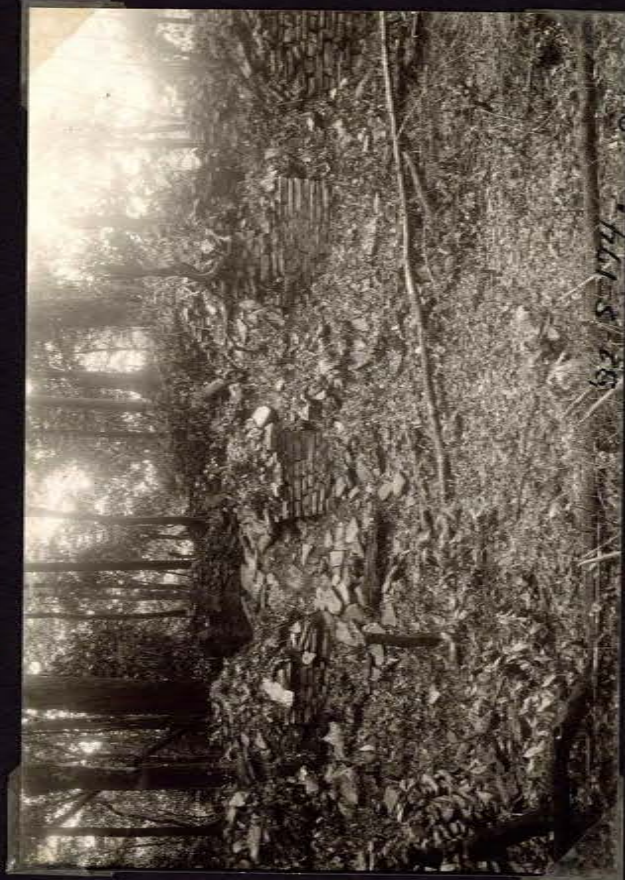


32-S-18



32-S-189

Handwritten red text: "T.M. 1/11/11"





'32-S-153



'32-S-150



'32-S-142



'32-S-149



'32-S-147



'32-S-146



'32-S-148





32-S-145



32-S-144

173
out to
Sawtooths



32-
M-39







39



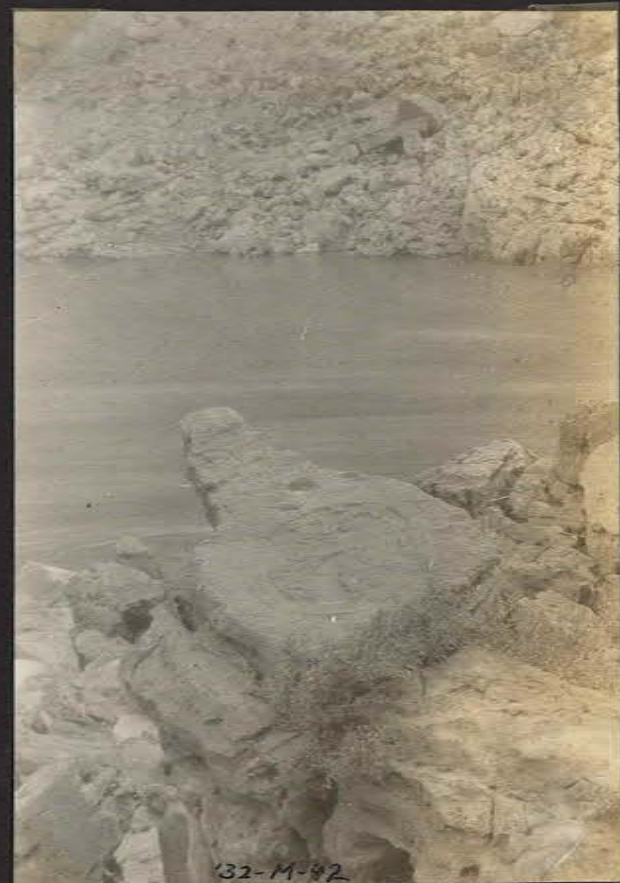
32-M-41

Stela 6, 5 m
background



32-M-43

Stela 5 (110 cm)



32-M-42

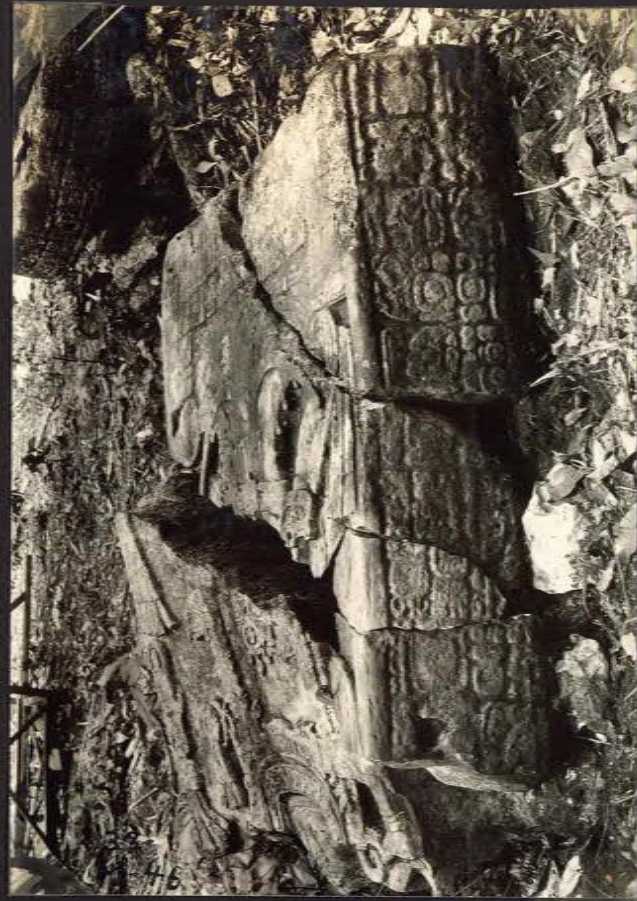


32-M-44

Stela 2, 4 m (110 cm)



Stela 7, left side. (Museum)



Stela 8, upper L. (Museum)



Stela 8 - lower left side (Museum)

32-M-46



Stela 8 upper + lower pieces, right side.

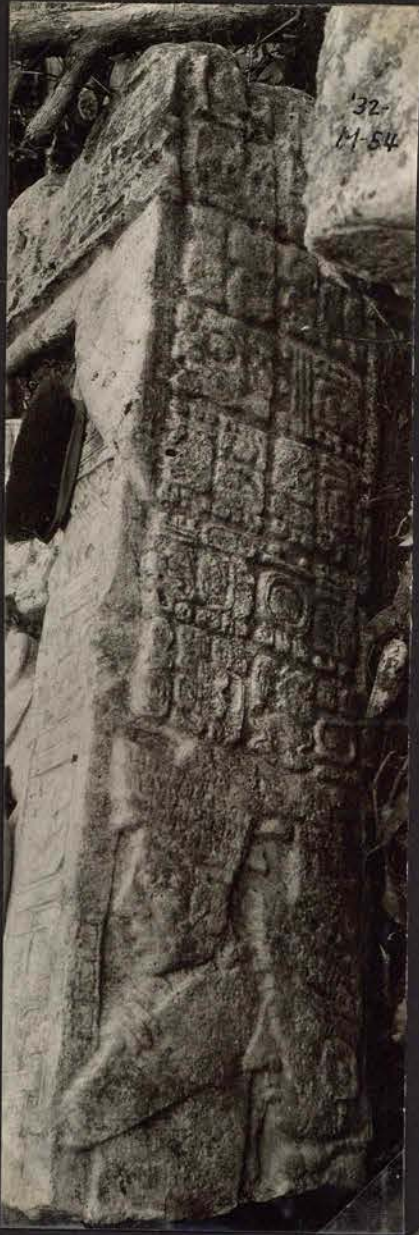


32-M-47

(16)



32-11-52



Stela II,
Upper left
(Mason)



32-11-53

Stela II, right
side (Mason)



Stela II
Lower left (Mason)



Stela 10 (Masmi)

'32- upper left side
M- Stela 10 (Masmi)
50



Head, Stela 15 (Masm)



Stela 16 (M)



Stela 1
L. side
(Masm)



Stela 1
lower part (Masm)



Base of Stela 20 (M)



32-M-61



32-M-136



32-M-136
(15937)
St. 32



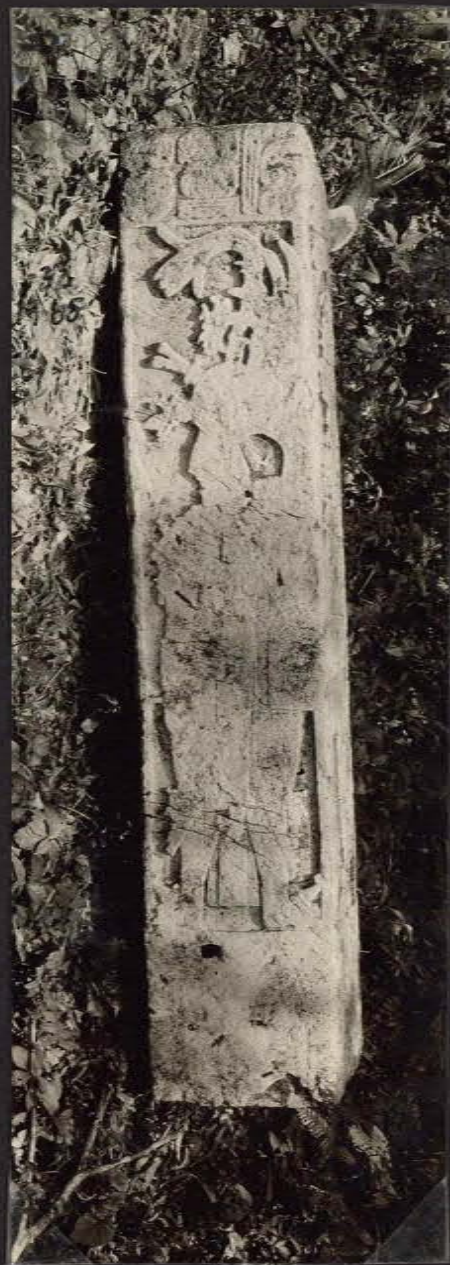
Stela 30 (Muv)
from tower



Base, Stela 31 (Muv)



Stela 32 (Muv)



Stela 32, rev
face (Muv)



Stela 22 (Mason)



Stela 22 (L side) Mason



Stela 23 - base (Mason)



Stela 23 - L side (Mason)

(4)



Stela 27 - cylindrical stone (Mason)



Stela 28 (Mason)

47



stela 33, principal face (Hous)



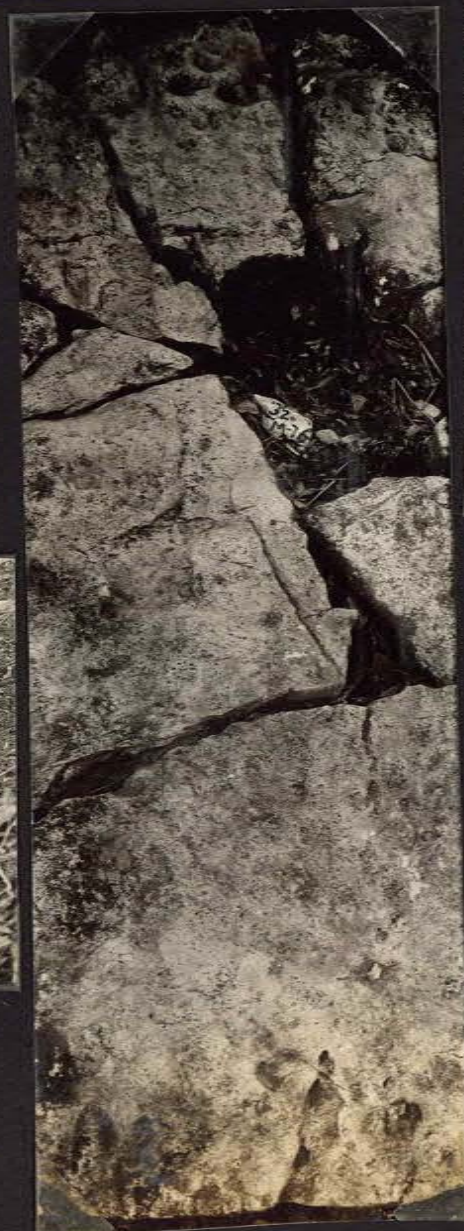
stela 35
(upper right
side - Mason)



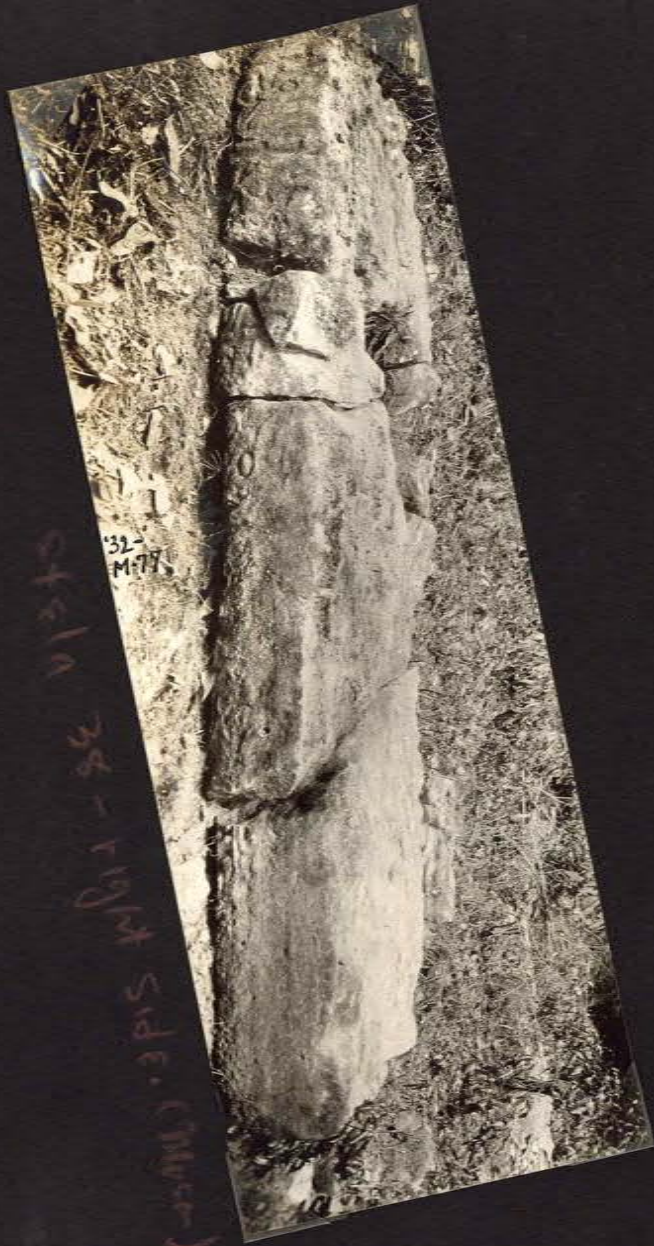
Stela 3 (Mason)



side, stela 38

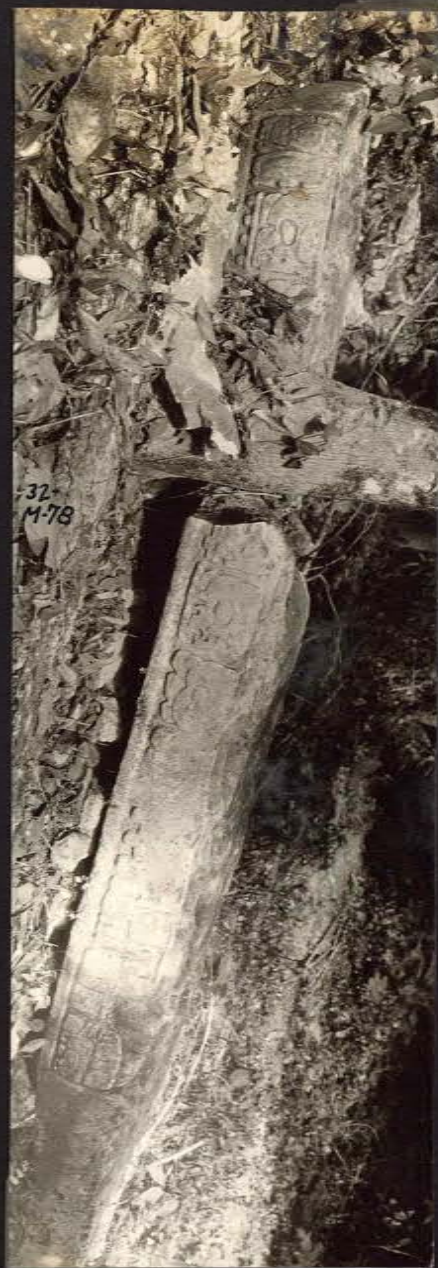


stela
38 (Hous)



(2000) 315 M-11-34 vista

32-
M-77



Stela 39 - right side

32-
M-78



32-
M-79

96



32-
M-80



M-180



M-179

Stela 39 (found) Masara

49



31-157



31-5-34

what was
for



32-S-92



32-M-81



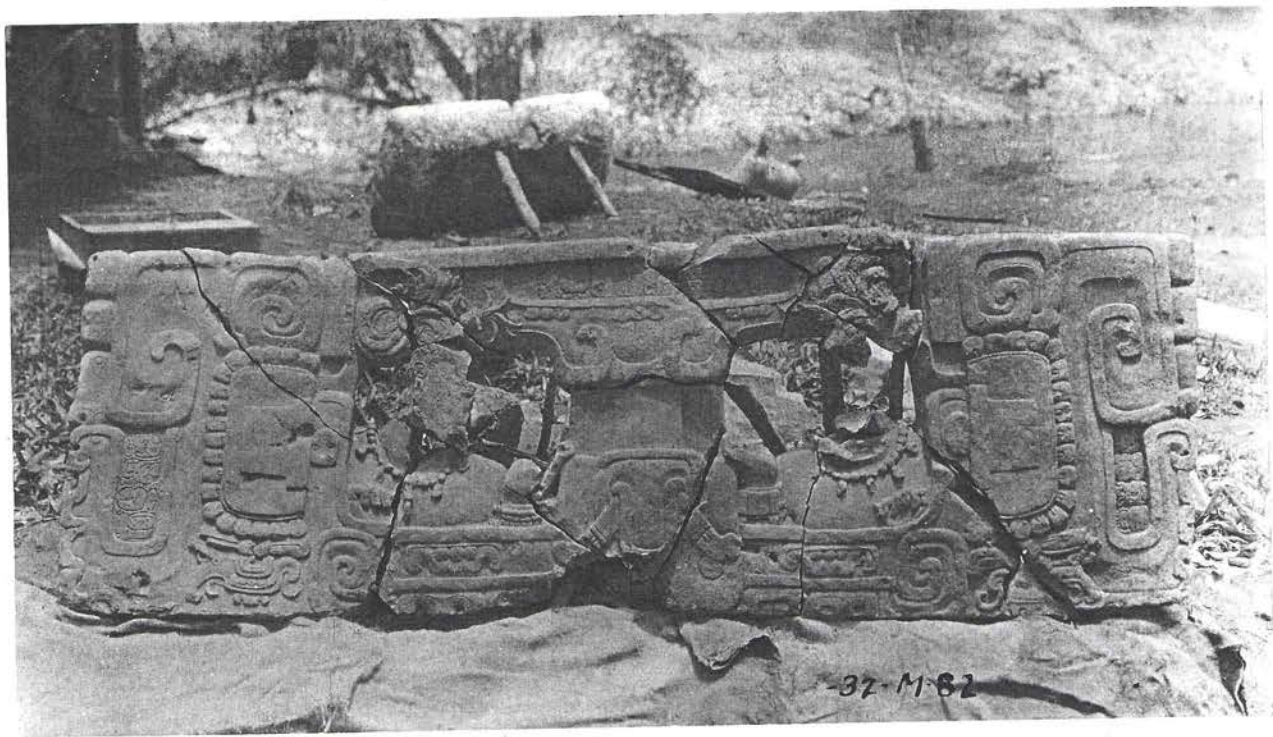
32-S-110

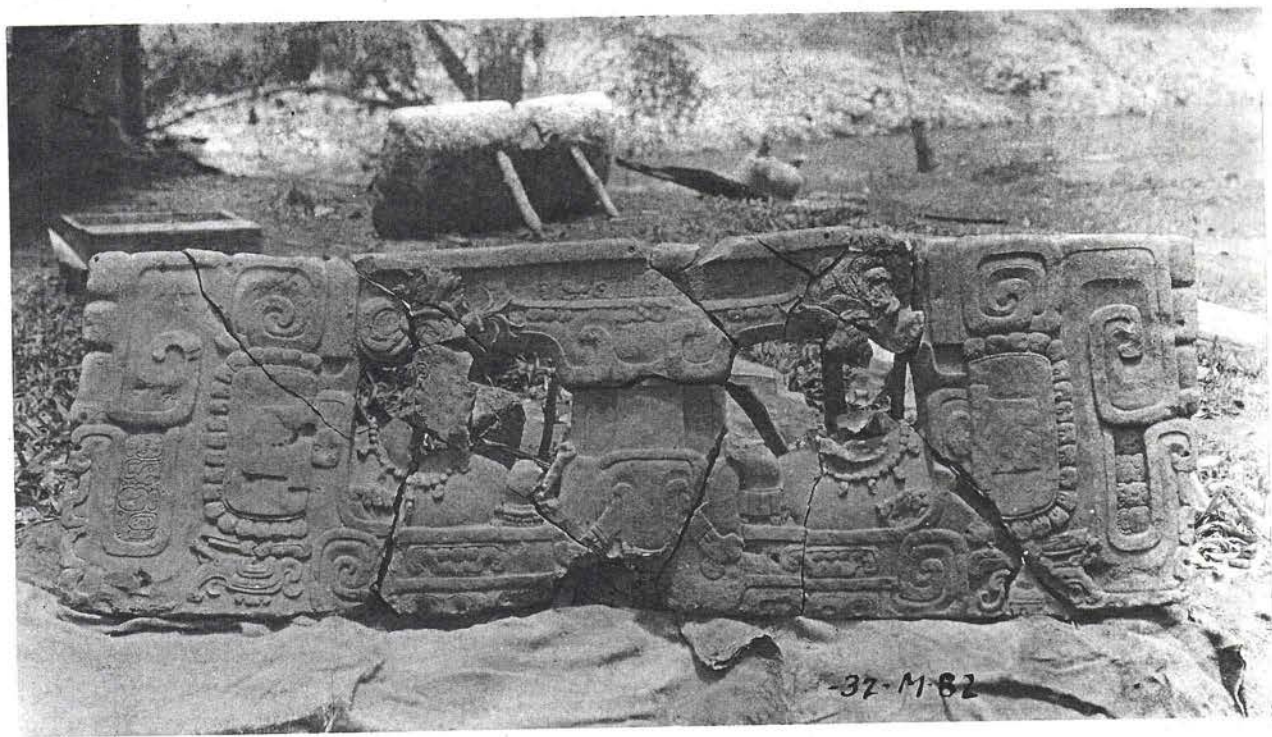


32-S-118

51

32-M-82





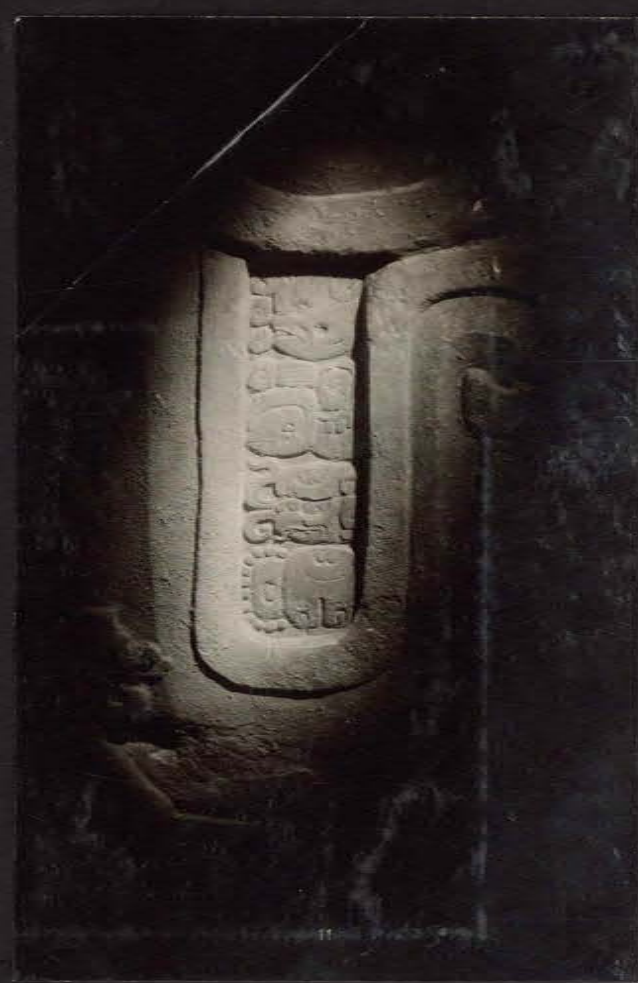
29



-32-M-82



32-S-31





RT leg

Left Leg



L5 Leg

'32-5-46



RT leg, Left side



RT leg - Left side

'32-5-38

Left leg - Left side



'32-M-83



RT leg, RT side

'32-5-42



Left Leg, RT side

'32-5-42



'32-5-63

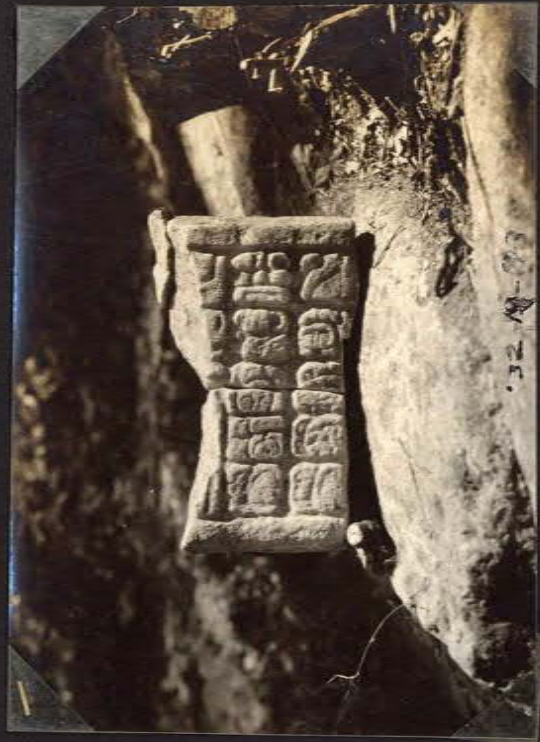


'32-S-186



'32-5-62

①



32-M-67 141



32-2-23

32-S-53 32-S-52

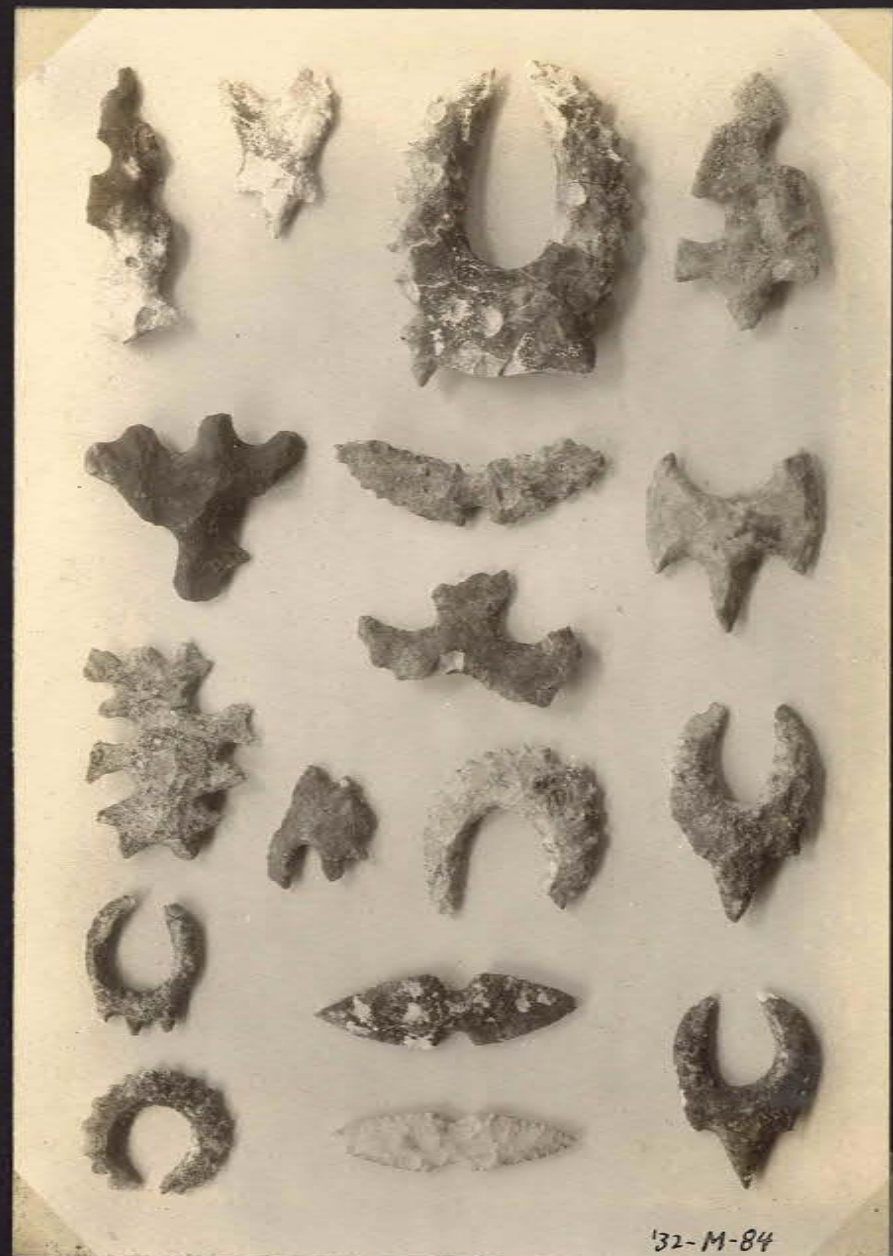


32-S-185



32-S-151

32-S-151





(2 more rows, double by listed)



'32-M-84



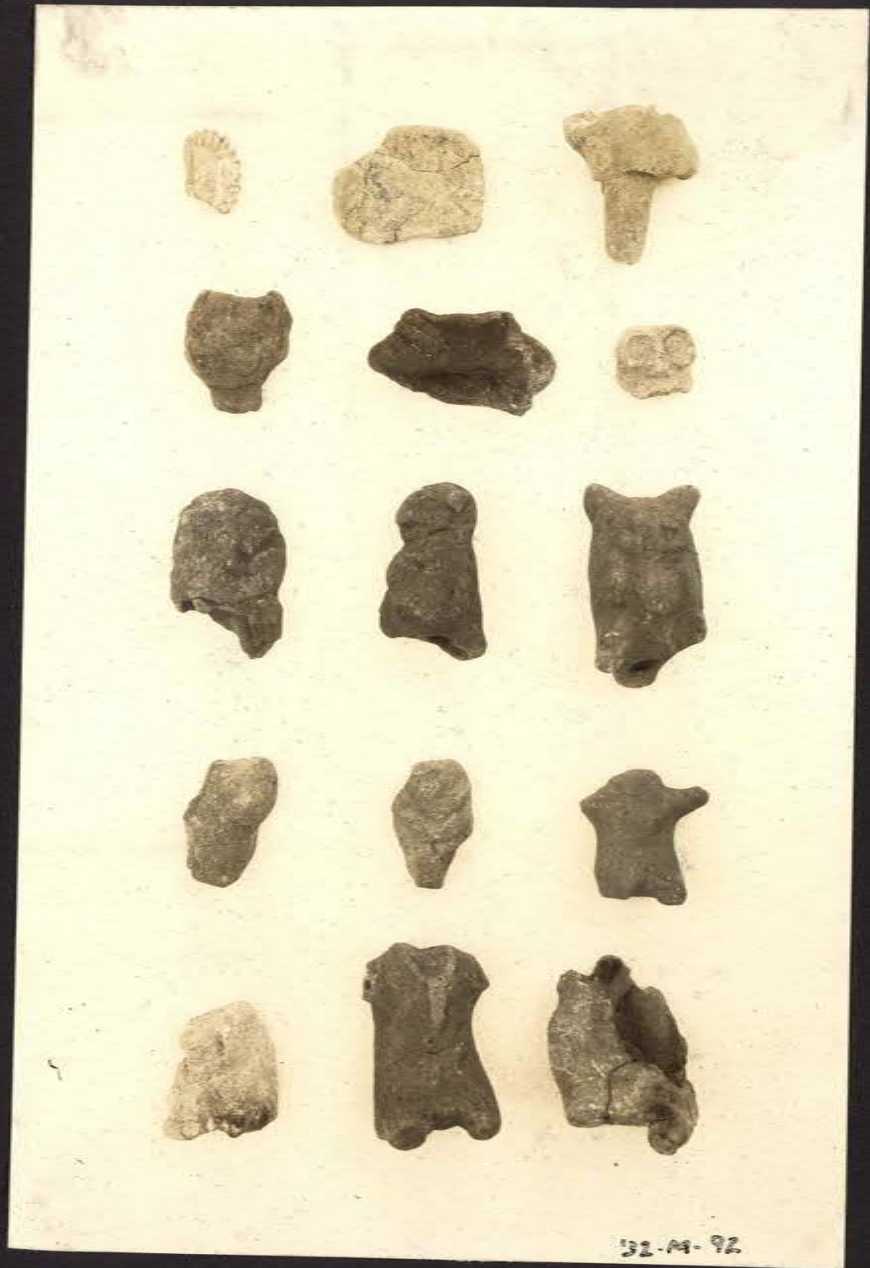
'32-M-89



'32-M-90



'32-M-91



'32-M-92



'32-M-93



