

PHOTOGRAPHS

PIERRE
NEGRAS
1931

Linton Callertwade Jr.
Personal

P.N. P-1
1931



11



12

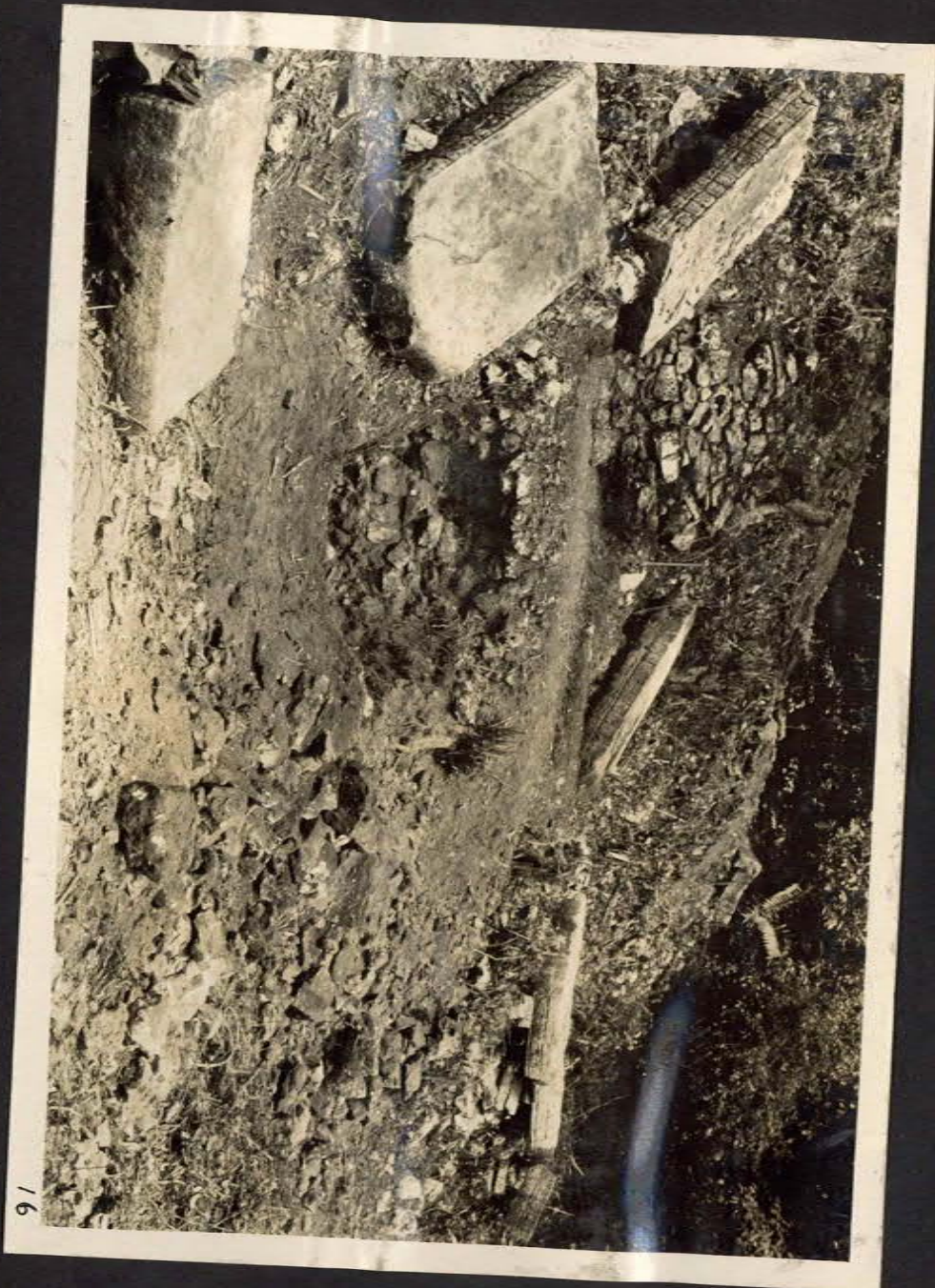


13

1



14



16



15





112



119



(15622) st. 4, butt in situ 120



228



229



313

5



21

6



127



128



230



231



232



233



234



235





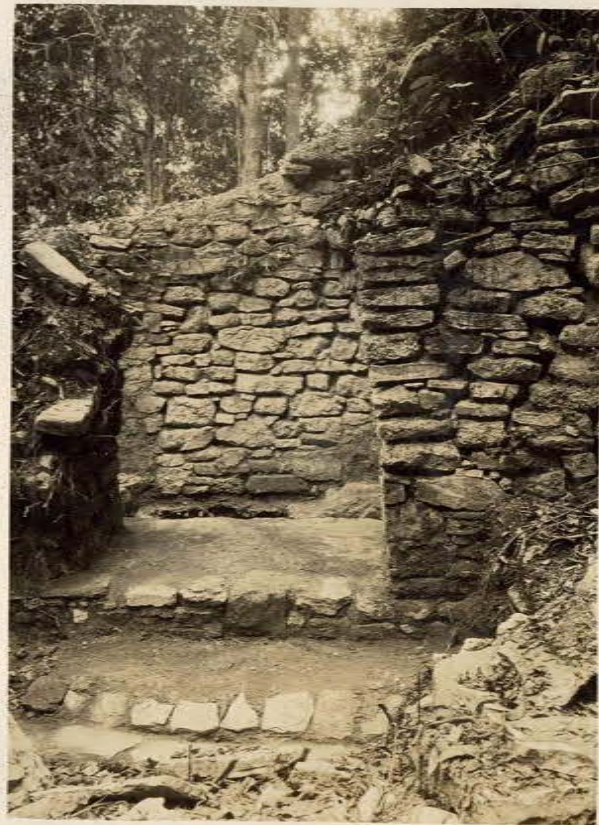
240



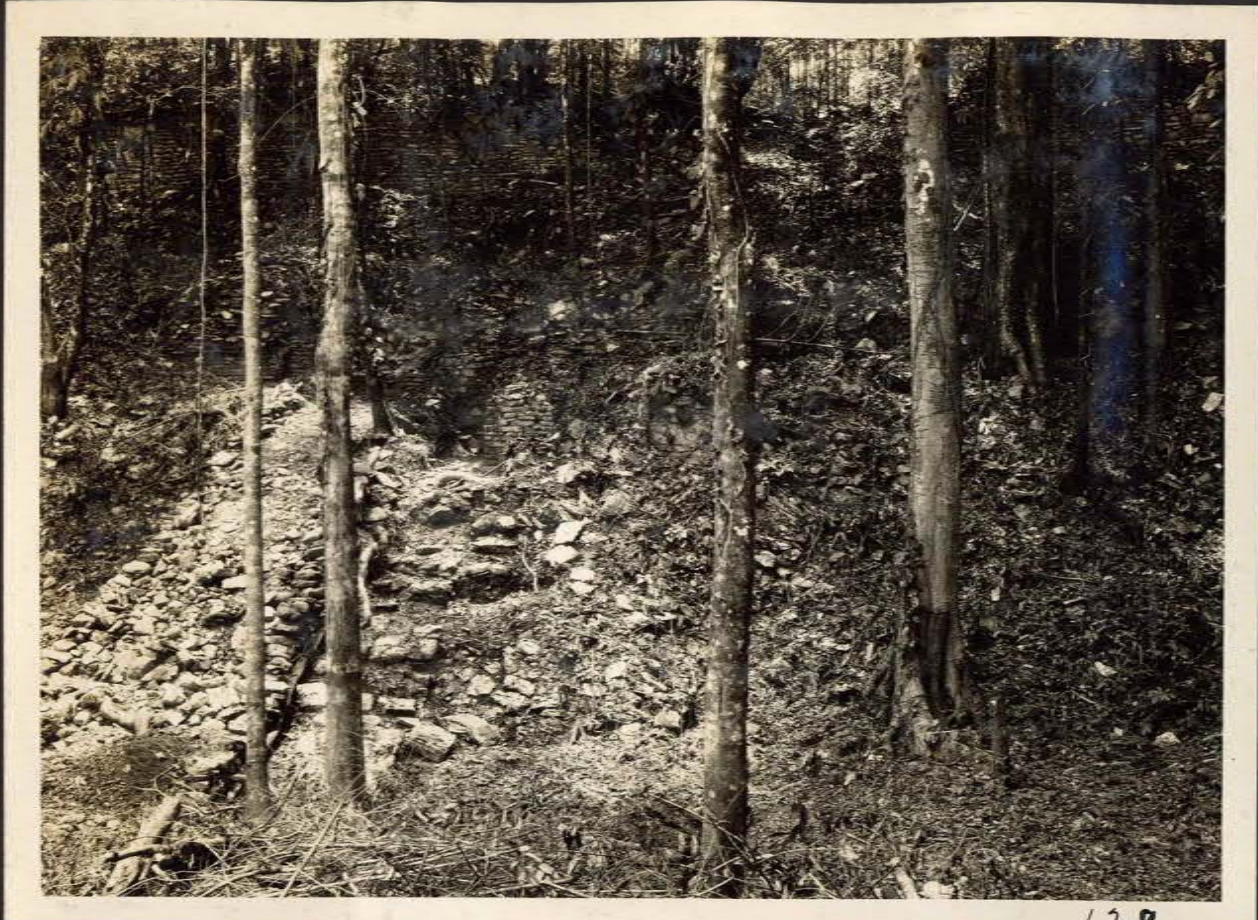
241



242



324



129



130



243



245





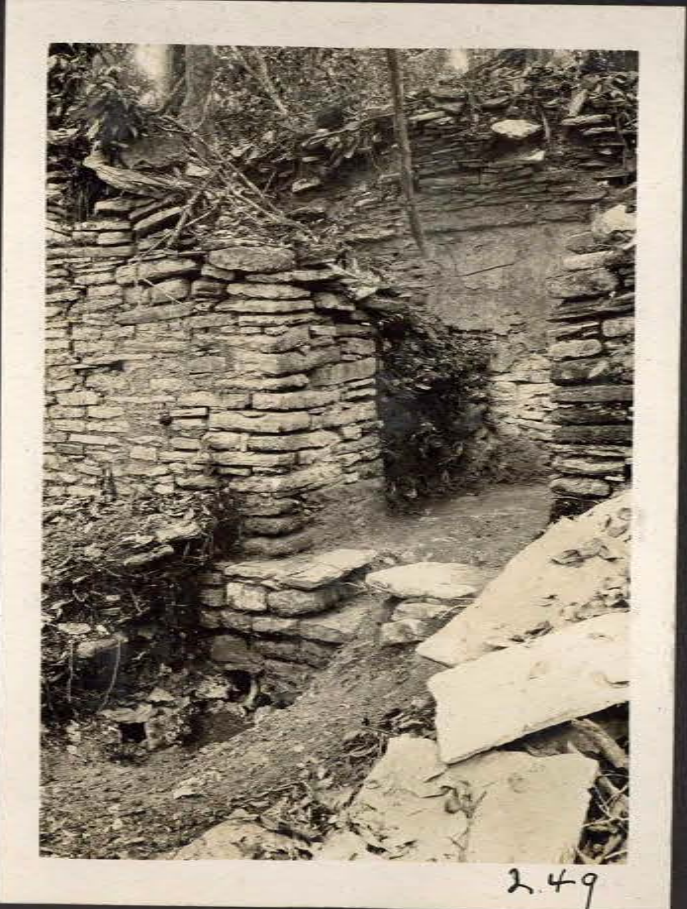
246



247



248



249



251



320



321



250



322



131



323



252



253



132



133



254



255



256



257



258



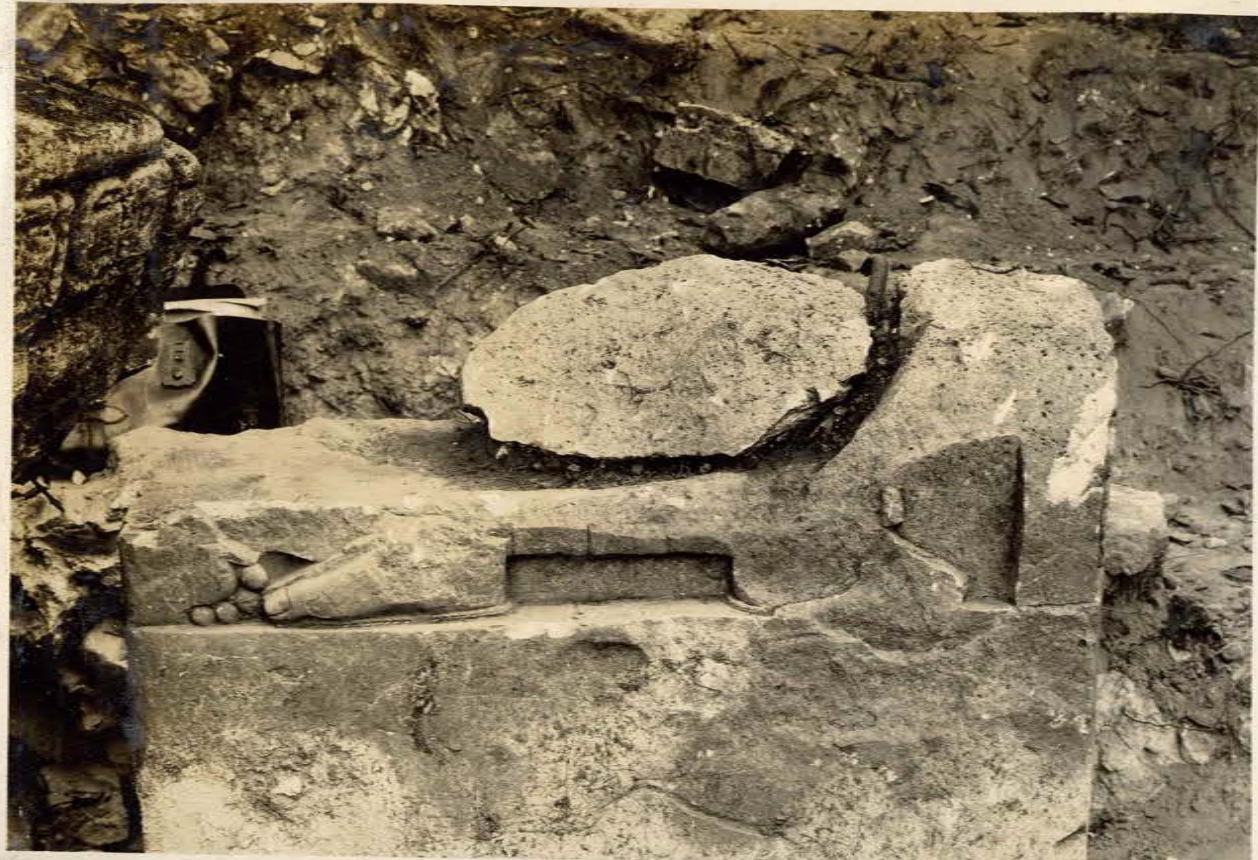
259



St. 9 (15627) 125



St. 9 (15628) 126



15648 St. 9 146



15650 St. 9 148

18



(15051) Stela 9, steps 149



150



260



(15768)

261

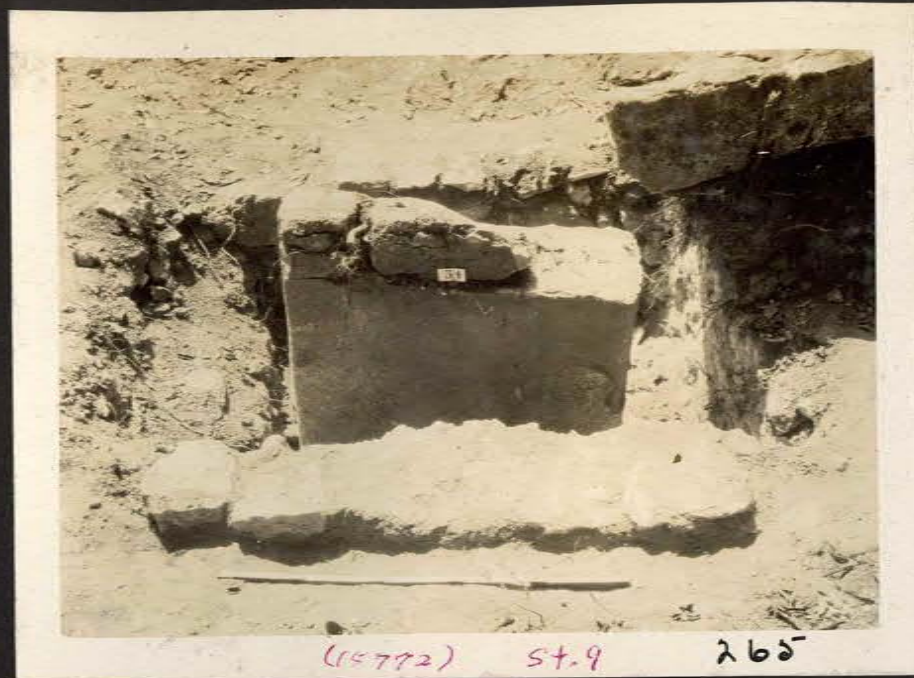


262



(15770) St. 9

263





269



270



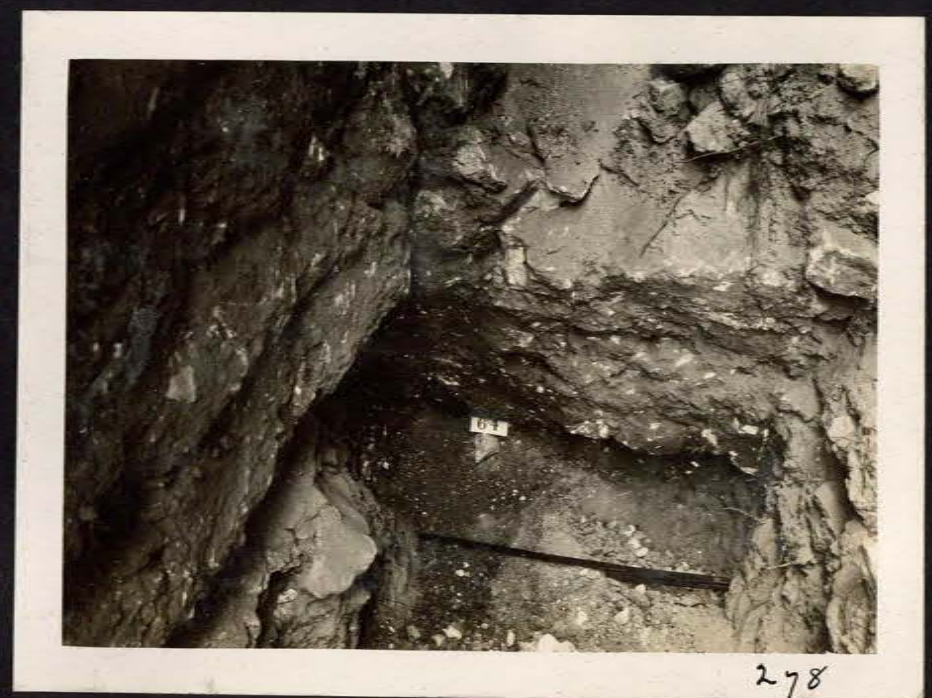
272



271



273





24



283



284



285



286



287



288



289



290



291



292



293



294



295



296



244



22





113



114



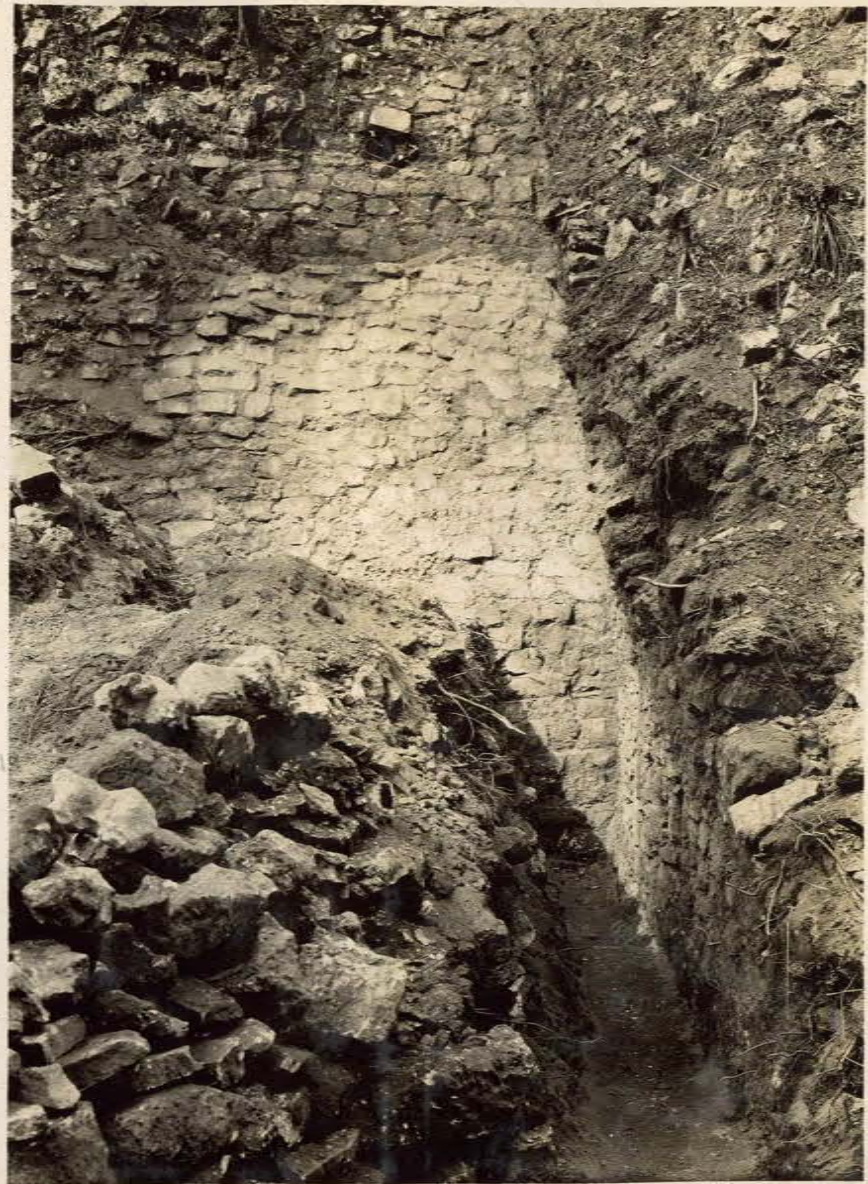
115



116



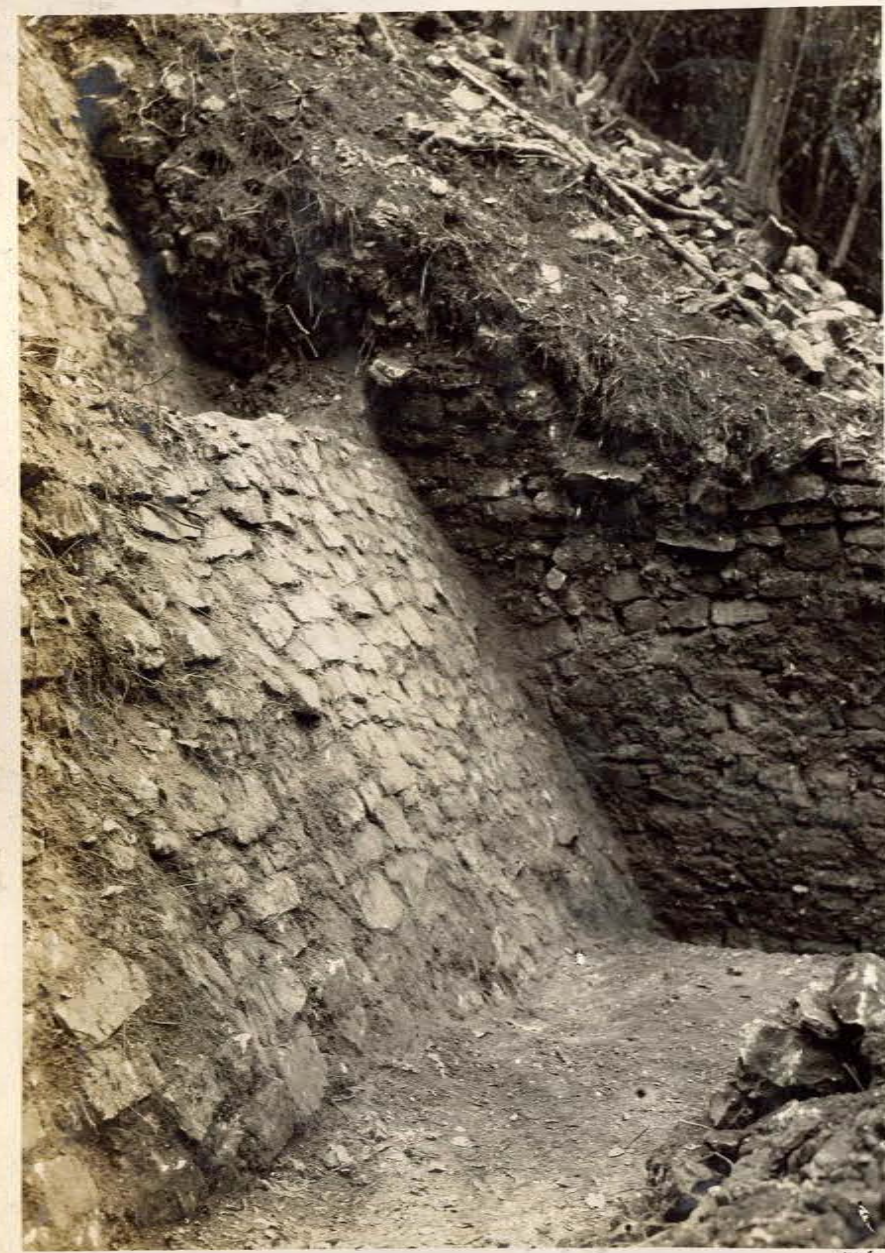
39



75



74



76



77



124



151



152



153

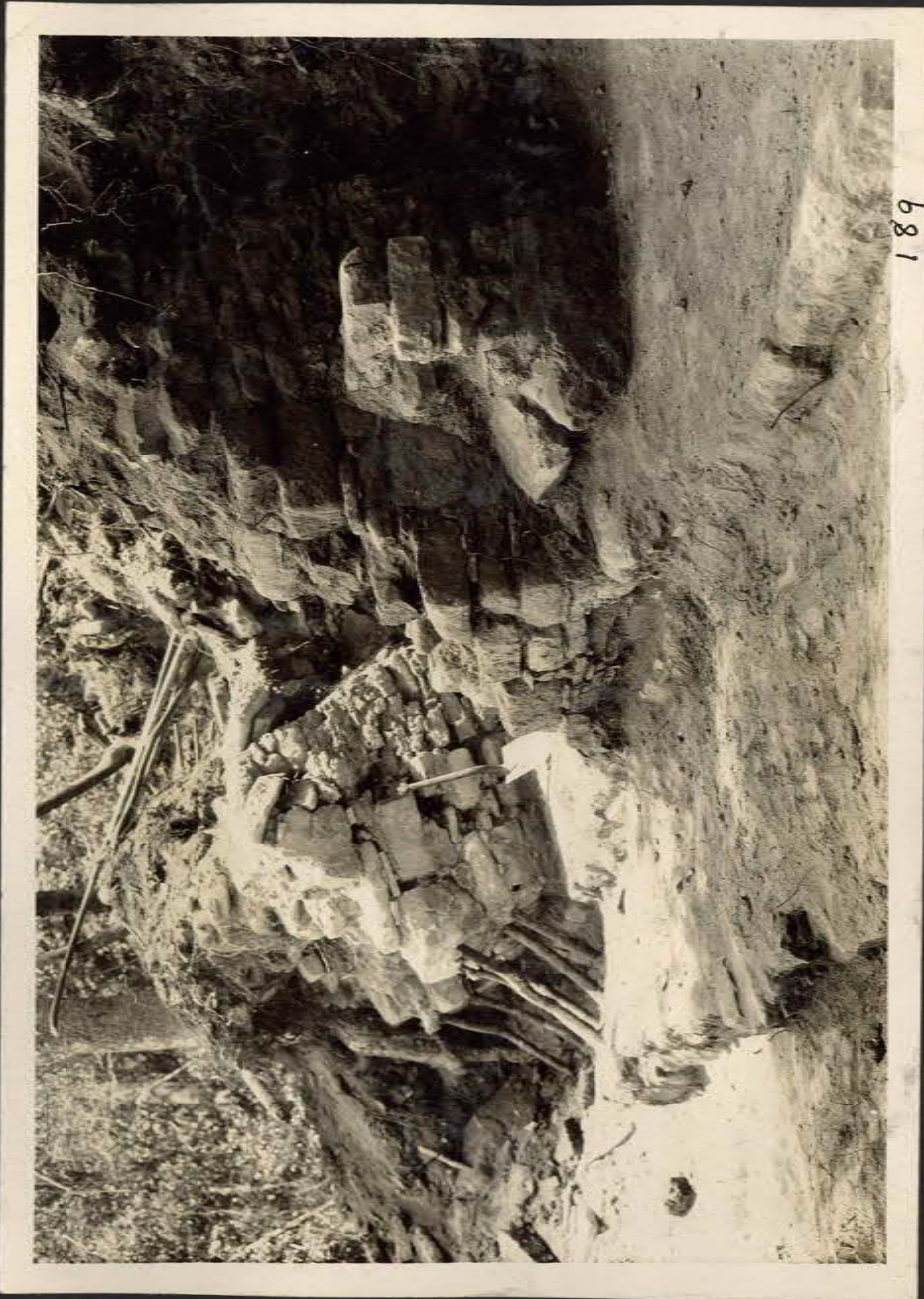




154



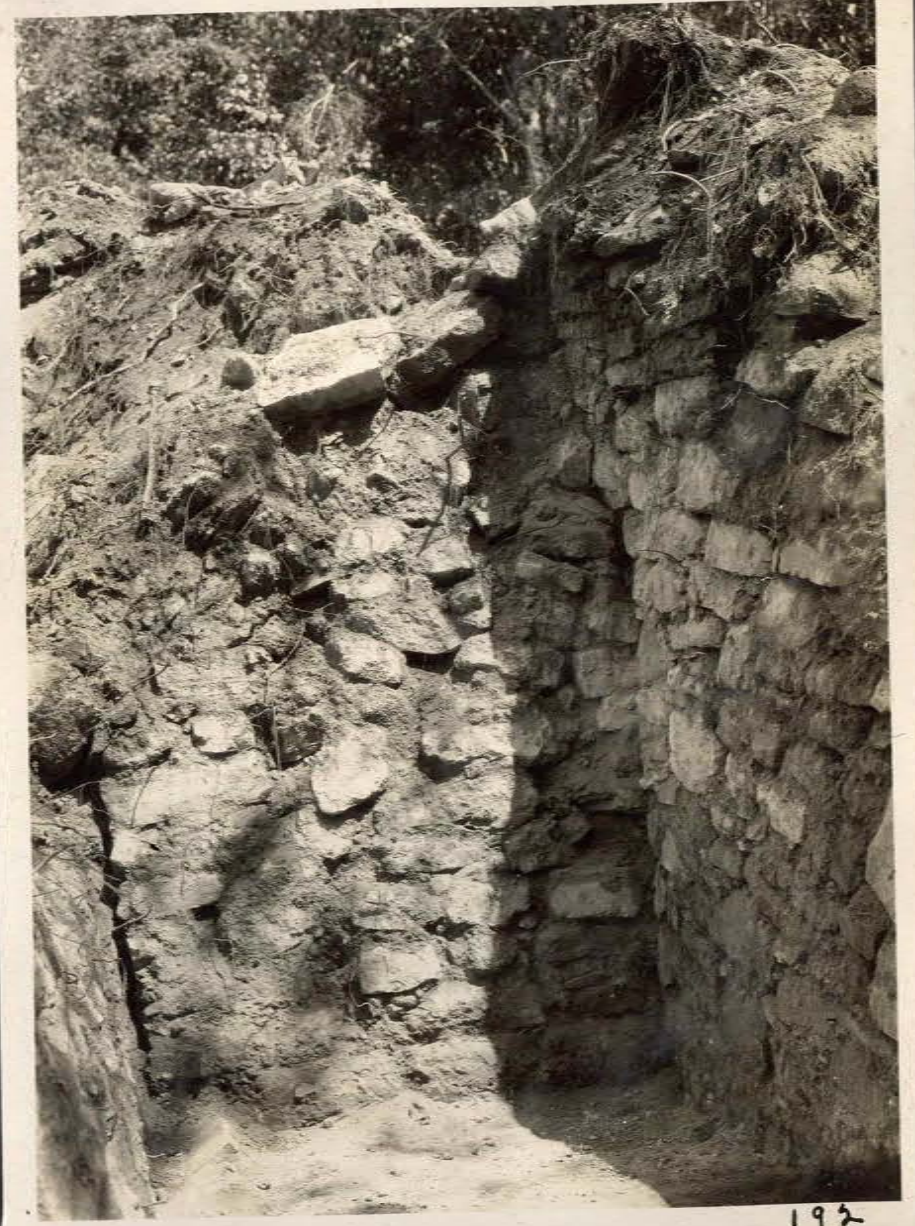
155



189



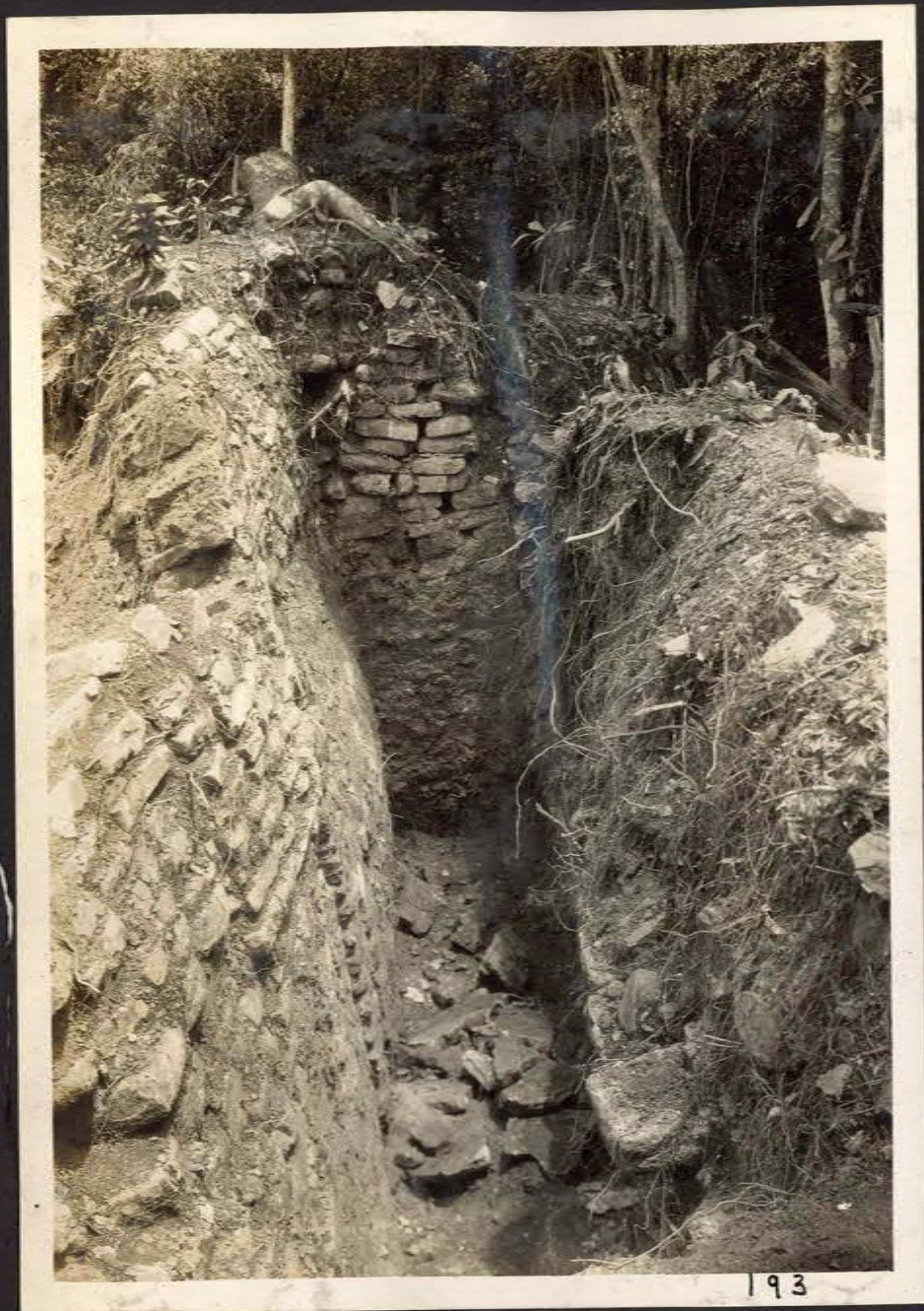
190



192



191

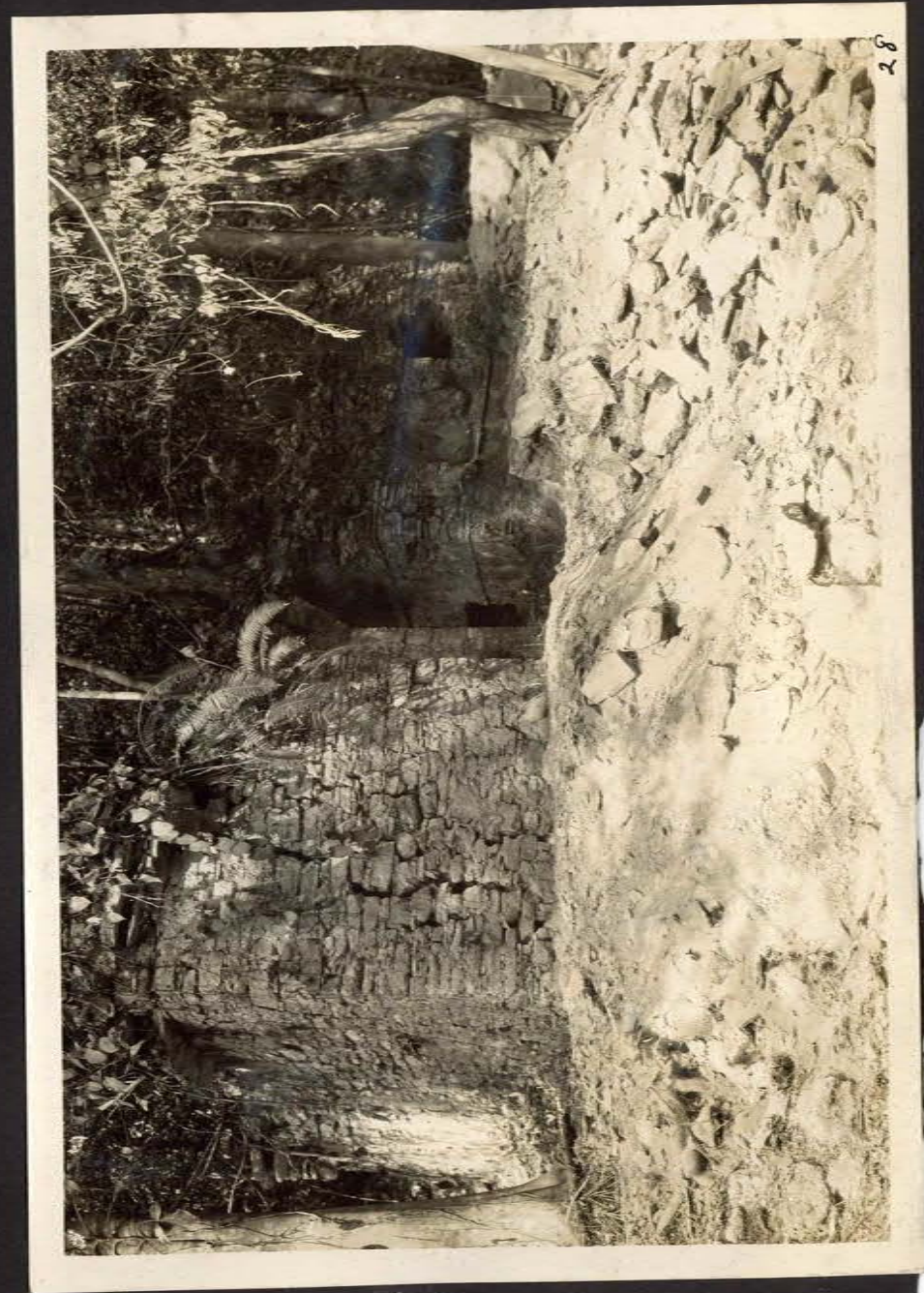




320



27



28



29

15529↑



30



31

15531



31

15532

木

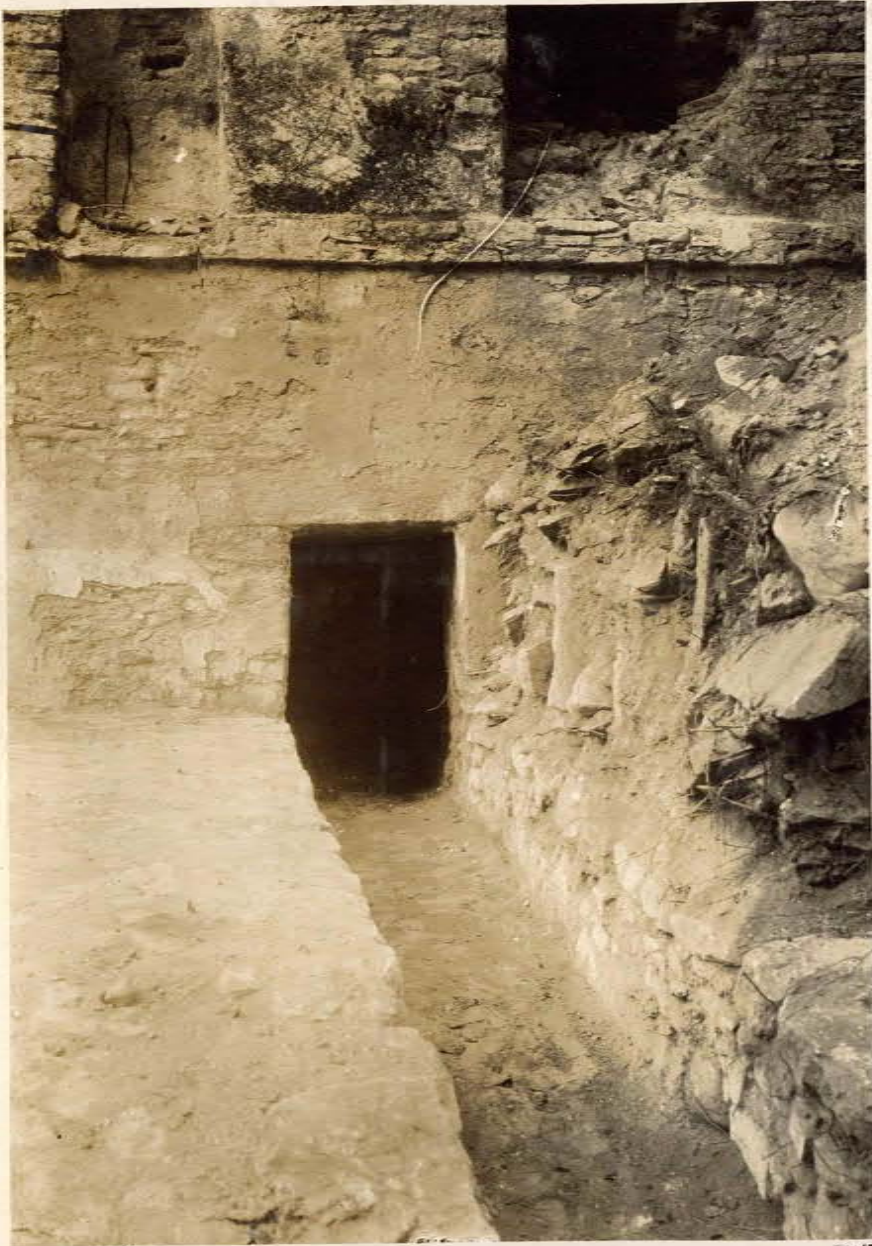


34

15533

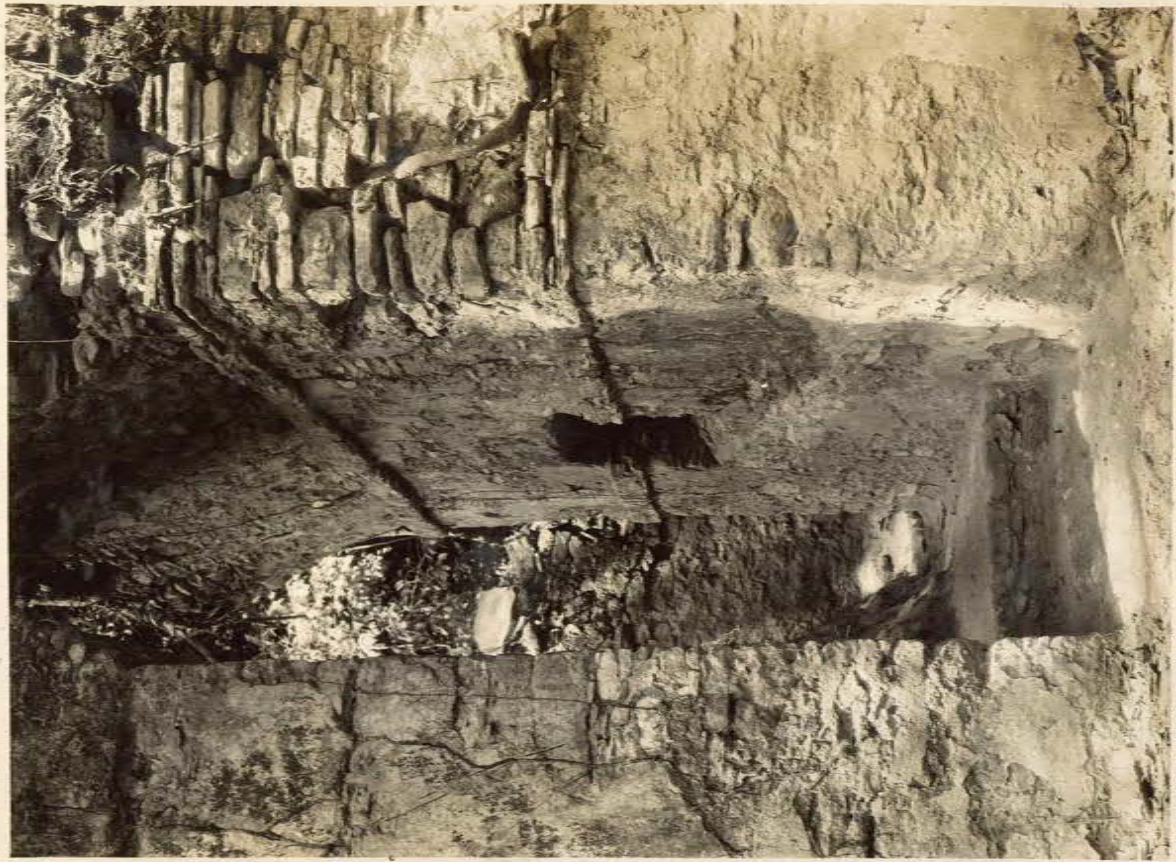


33



35

15535



122

15624



123

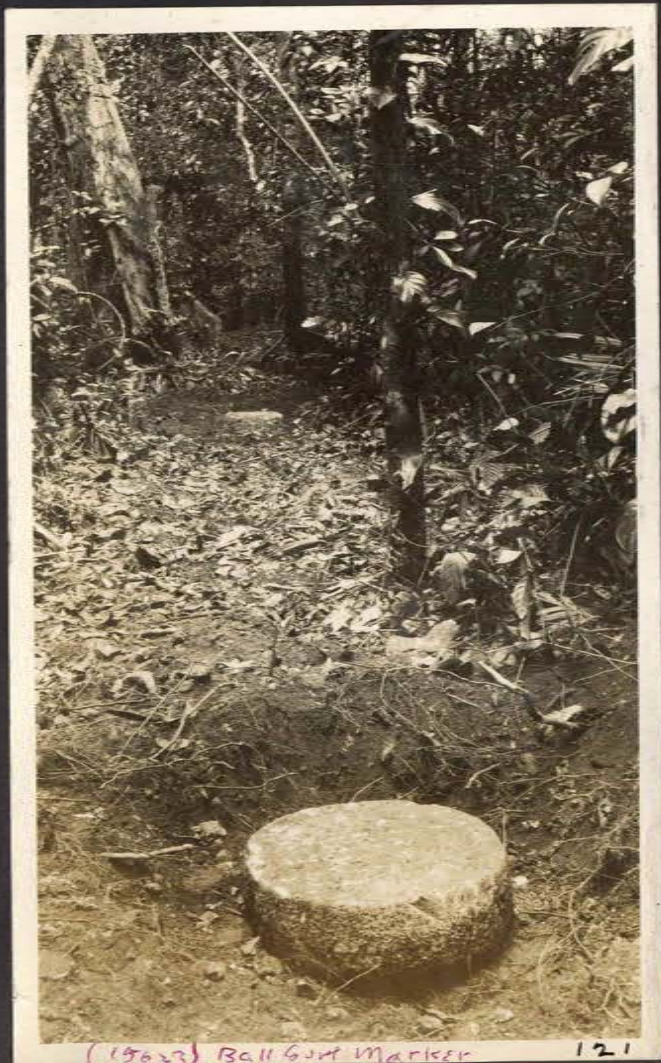
15629



196



202



(1962) Ball Gort Marker 121



203



205



204



314

15861



206



(15862) East B. Court mortar

315

15862

43



316



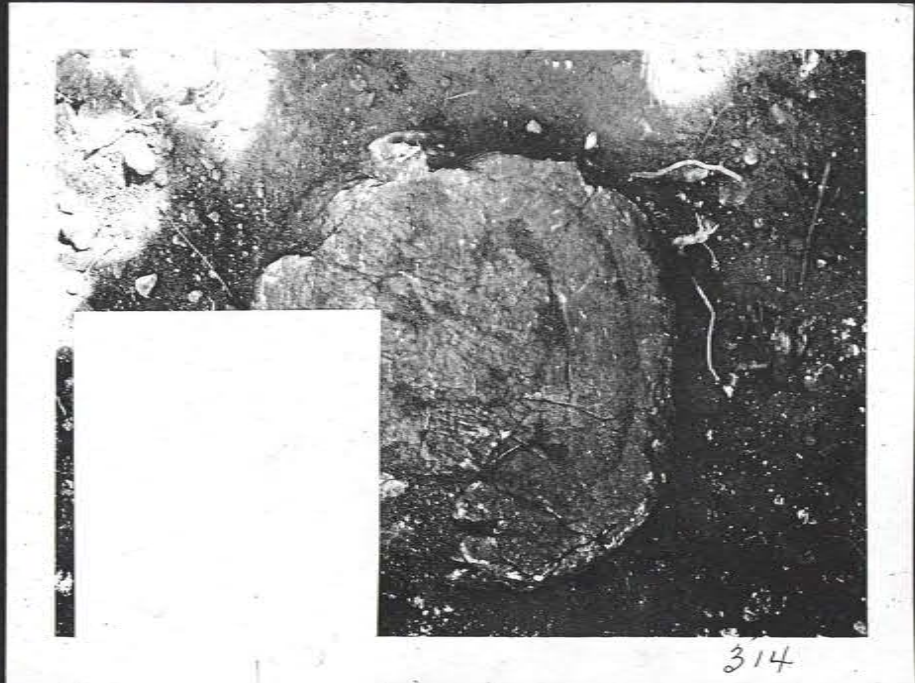
317



318



319



44



44



45



297



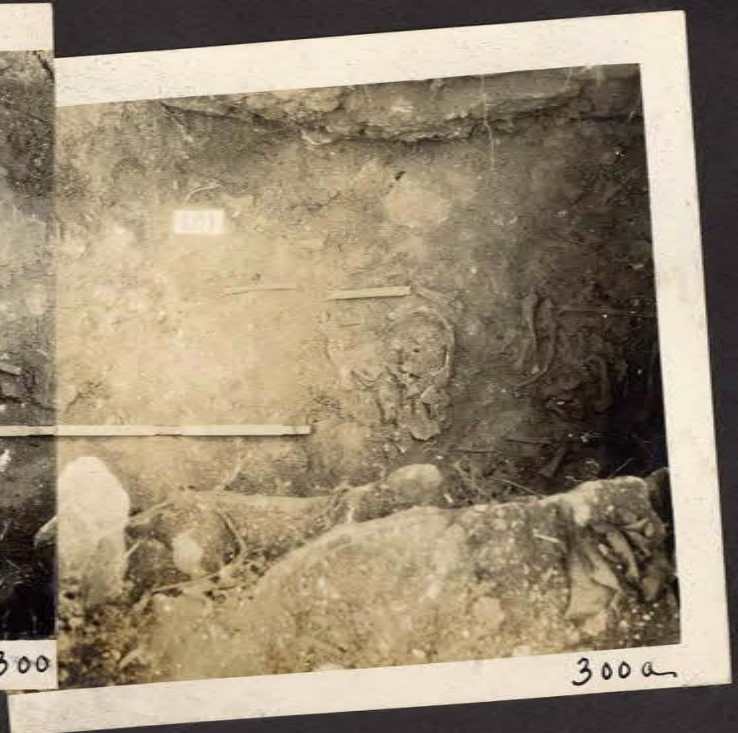
298



299



300



300a



301



302



303



304



305



306



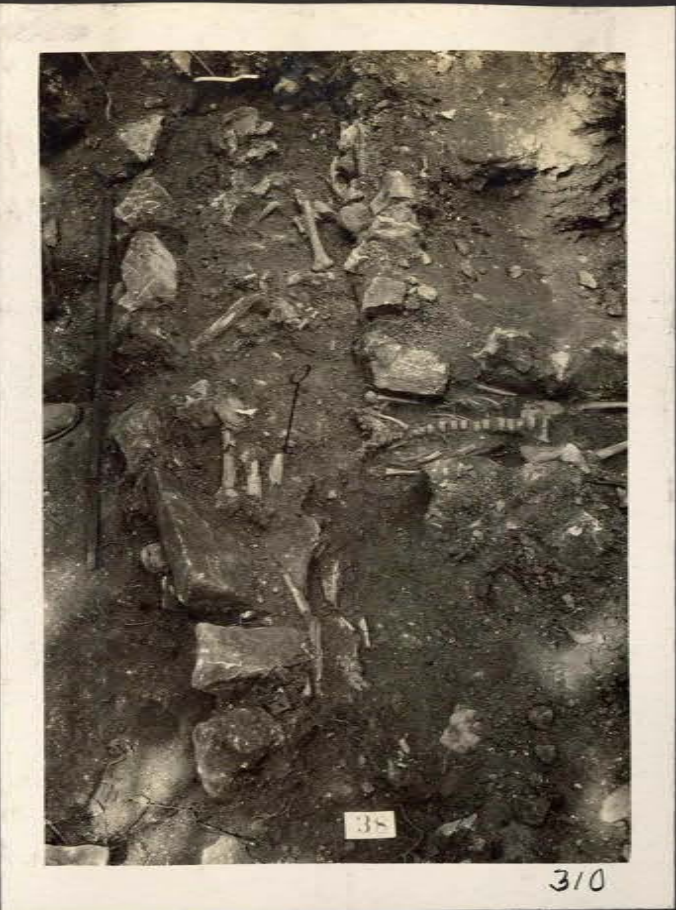
308



Bur. 5

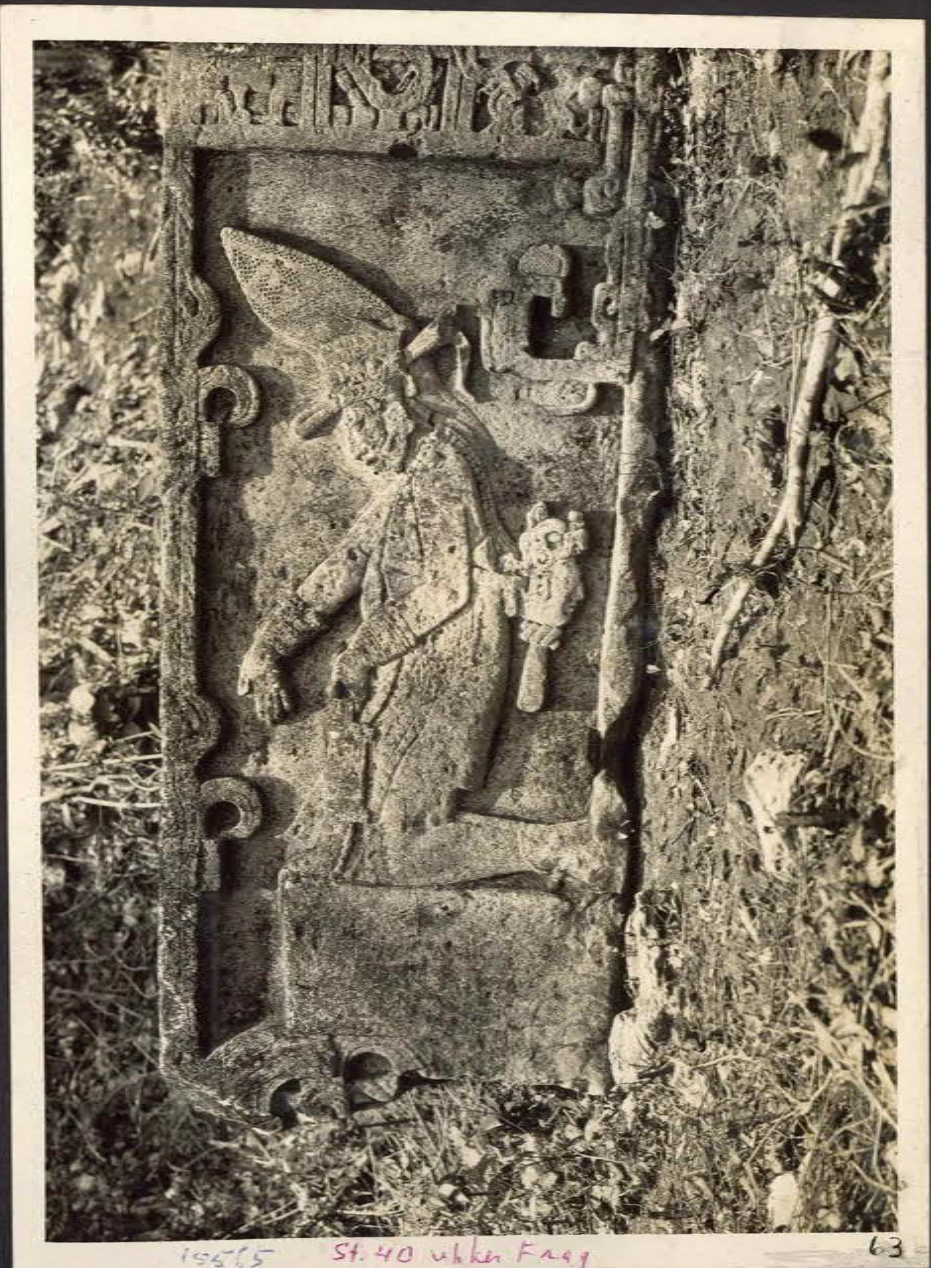
307

47





15564 St. 40 lower Façade 62



15565 St. 40 upper Façade 63

18
 64 (15566) St. 18 ~~right side~~ 3 Figs
 65 (15567) St. 18, ~~right~~ high side
 66 (15568) St. 19, left side

who are
 parents?



(15569) St. 42 (?)

67



15570 Re-used stela 43 68



15571 St. 12 2/over frags. in situ 69



15572 St. 4 Butt frag. Line of glyphs 70



(15649) St. 9 glyphs on side 147



() St. 14 front face up 43

13545



() St. 15, front 42





46



47

53



8



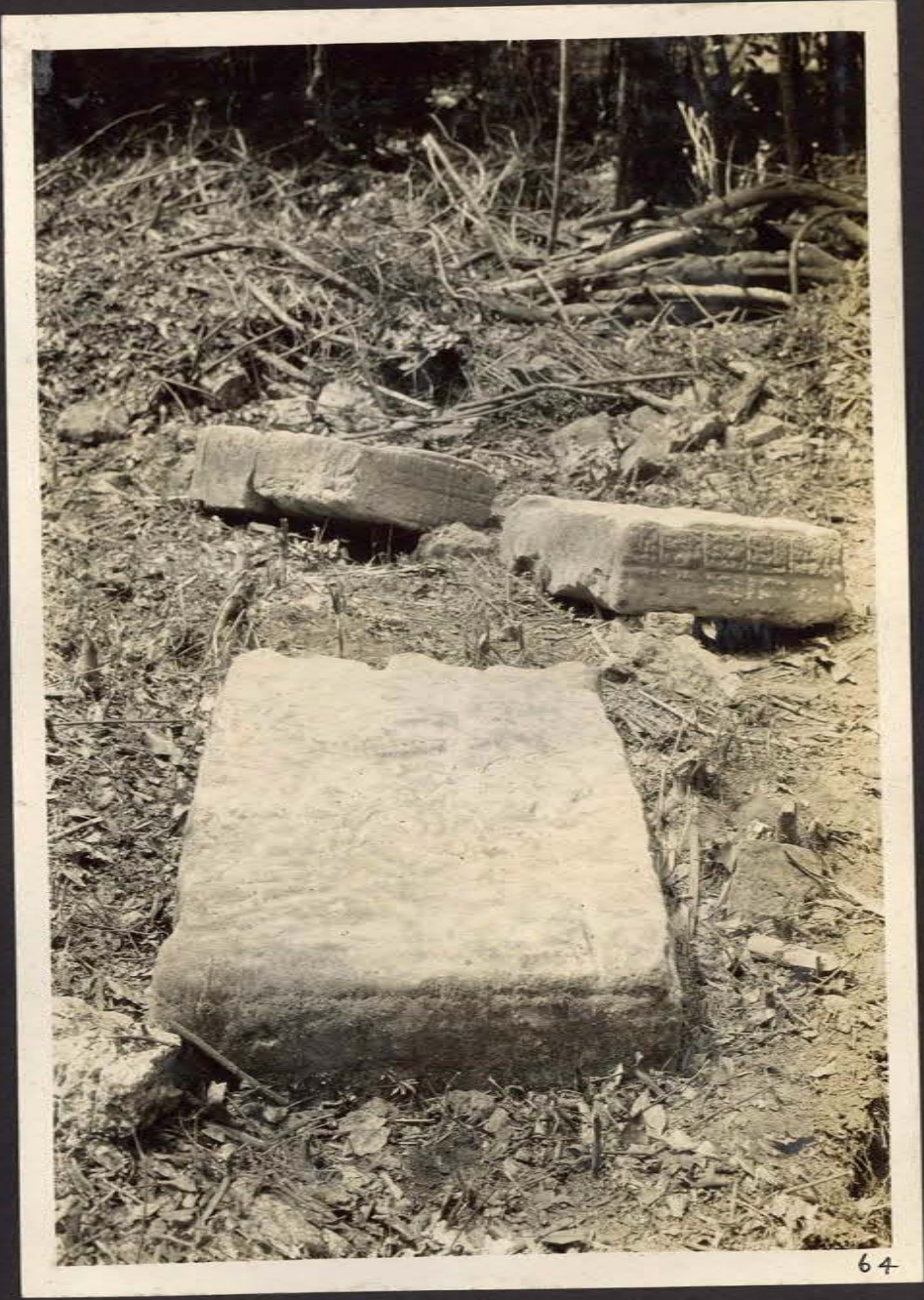
49



50



51





66



40



41

ST36



5



(15576) Alt. 2 73



(15620) Alt. 1 118



(15643) Alt. 2 141

SM-143339

SH-143338



Alt. 2 sublat 142
West side



441
Alt 2 sublat
(East)

Alt 2 sublat



Alt 2 sublat 143

59

54-143341



Alt. 2 subunit 145
North (2g) (marker)



138



54-1433410

53



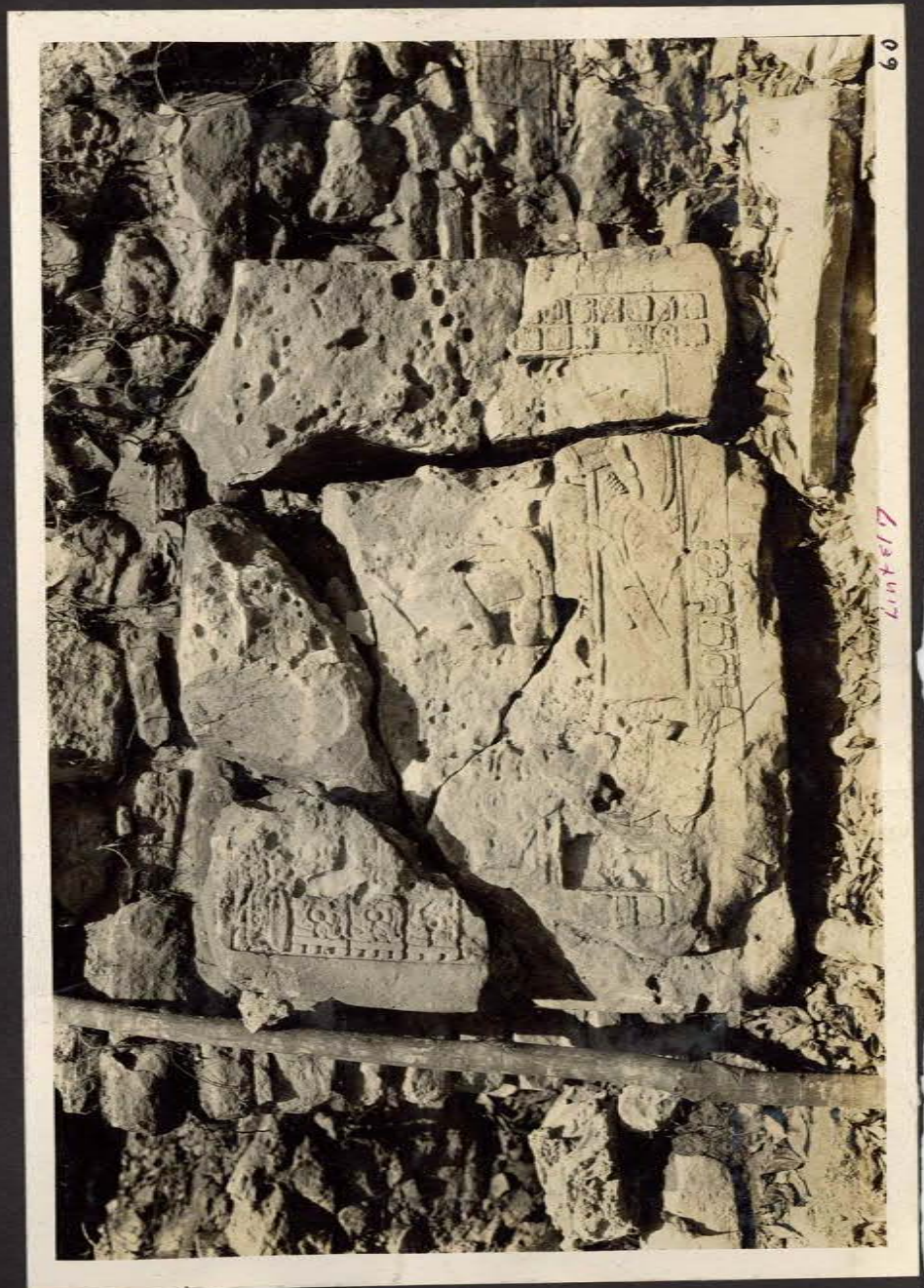


Alt. 53 72

Reversed print (in negative).



Lintell 7 26



60

Lintell 7

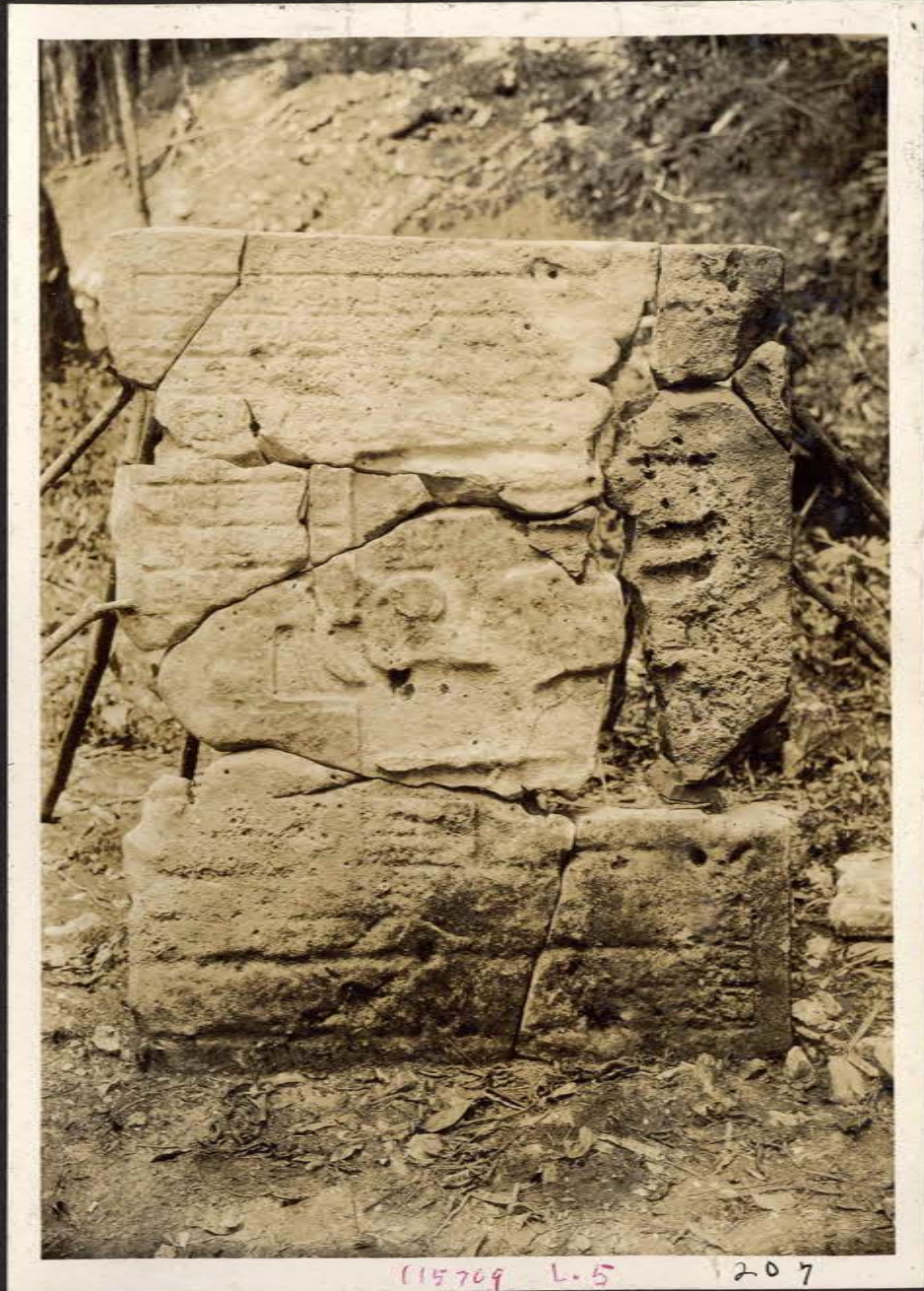
62



(isbul)

Lintel 5

139



115709 L.5

1207



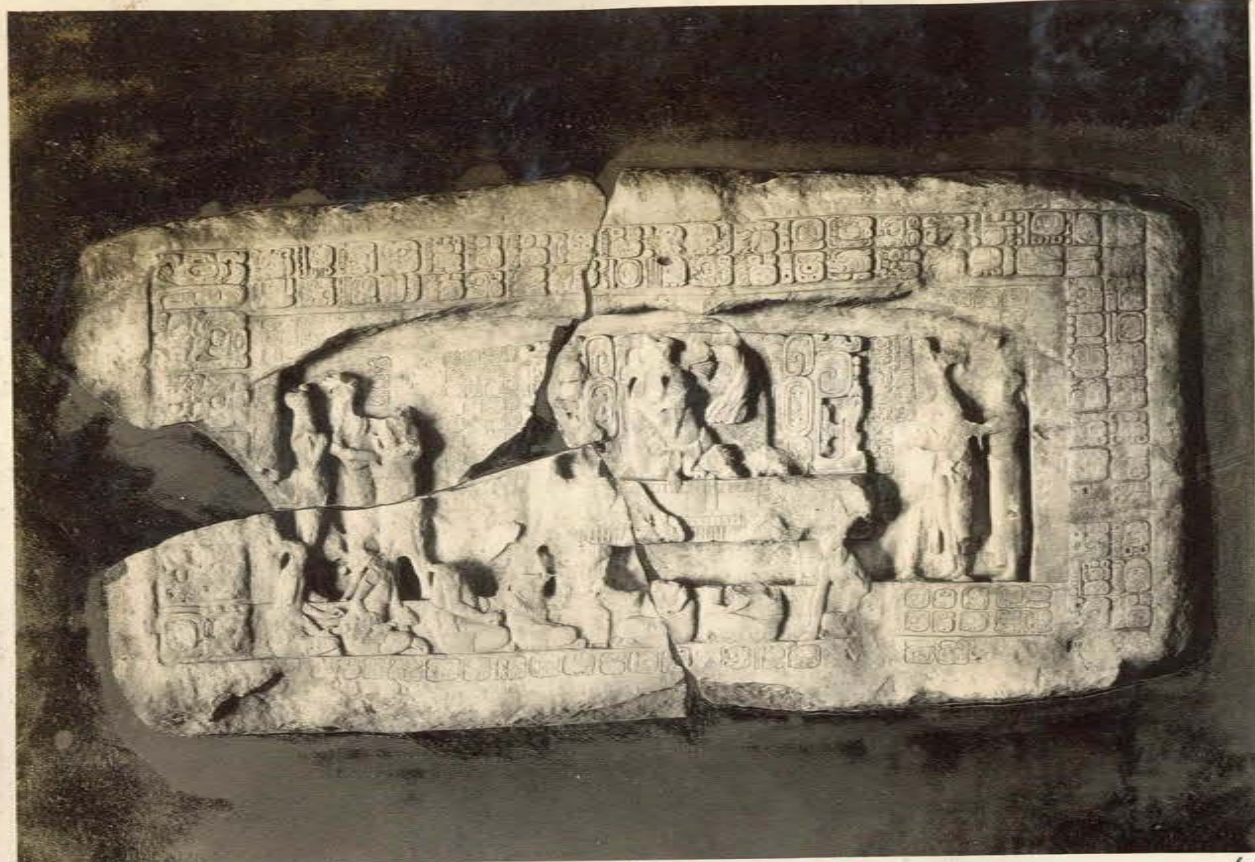
L.3 57



L.3 58



L.3 59



L.3

61



(15644)

f

L.6

140



(15852)

L.8

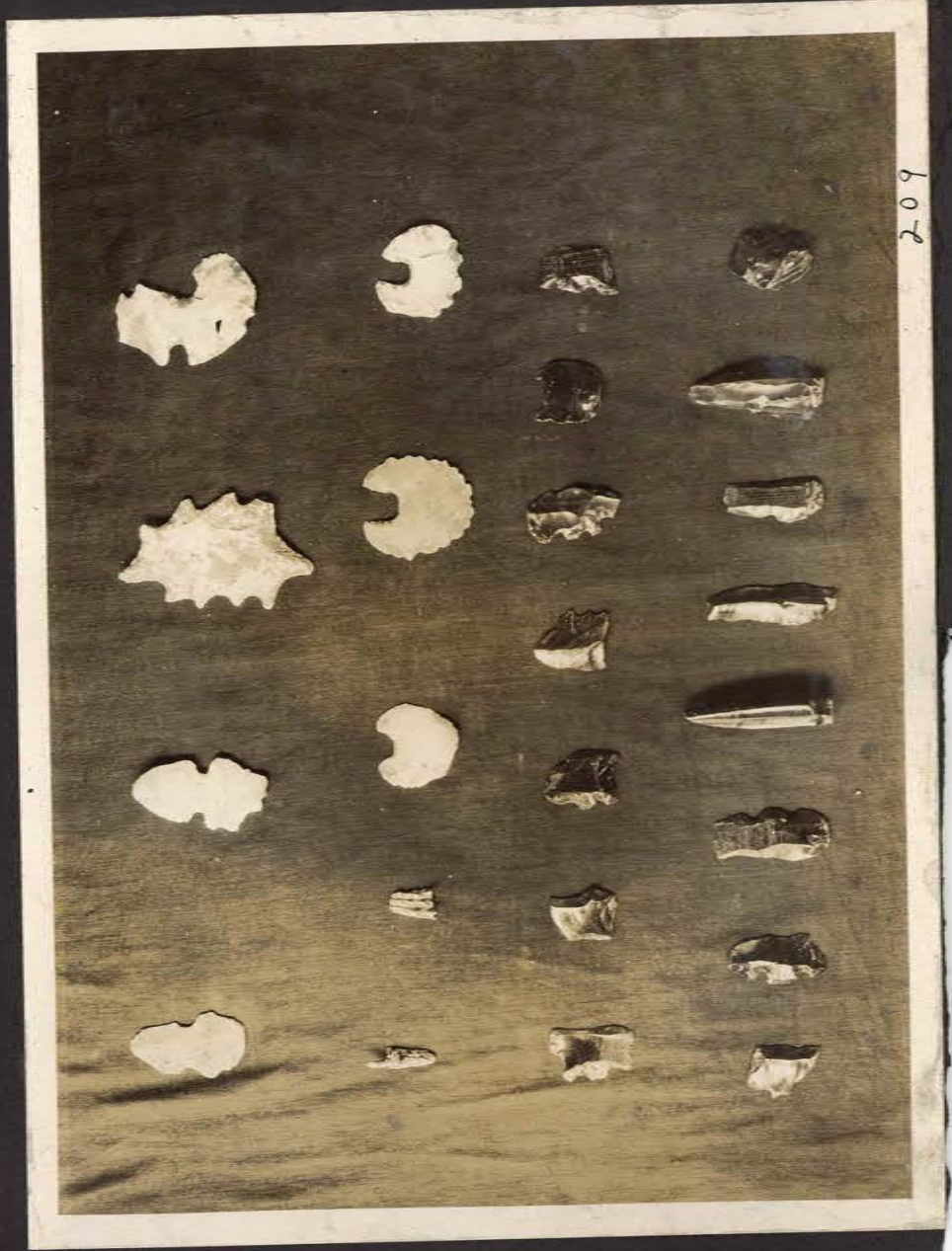
347



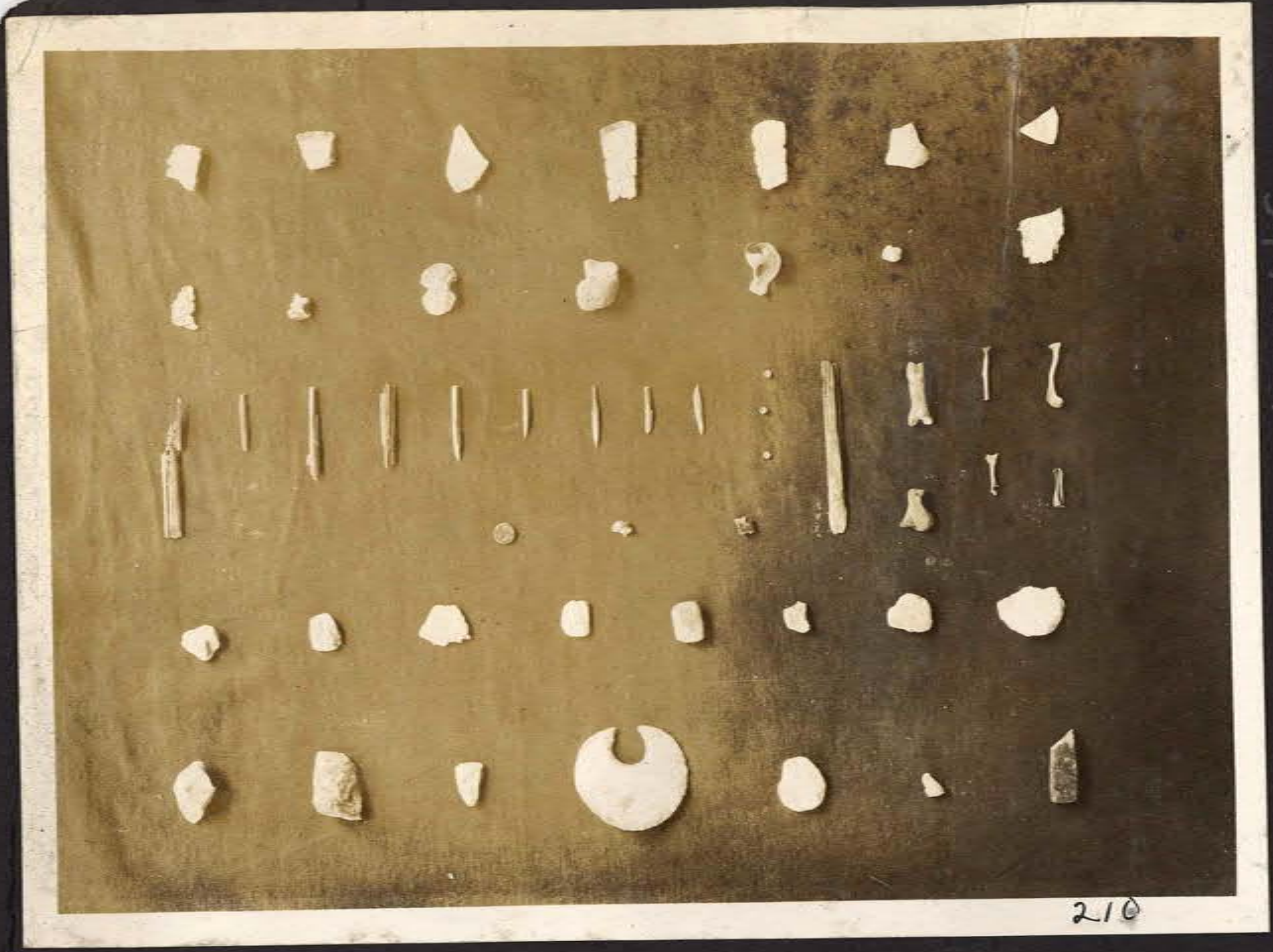
L.9a To Frags. to Guotism Q (15726) (Lints(s) & L.10 223



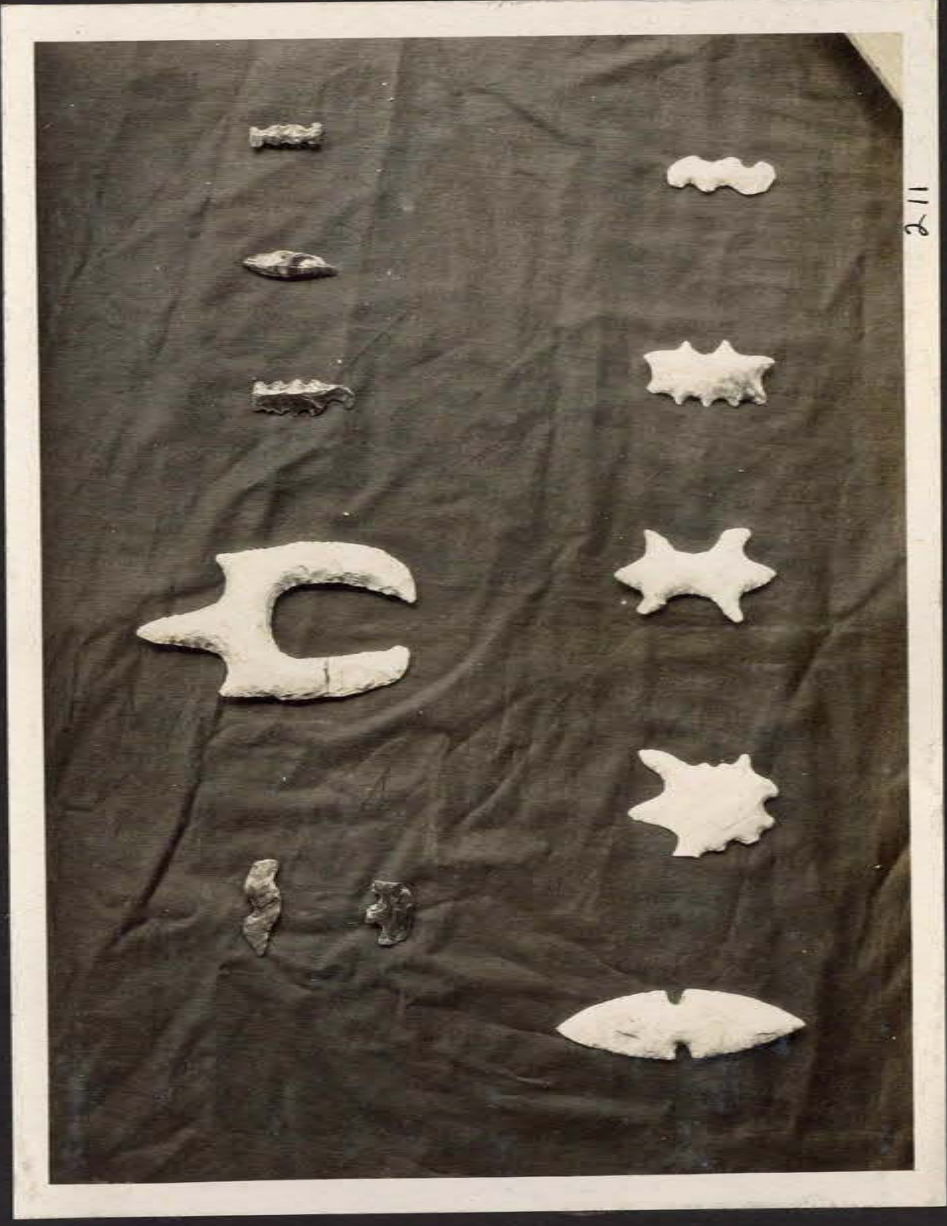
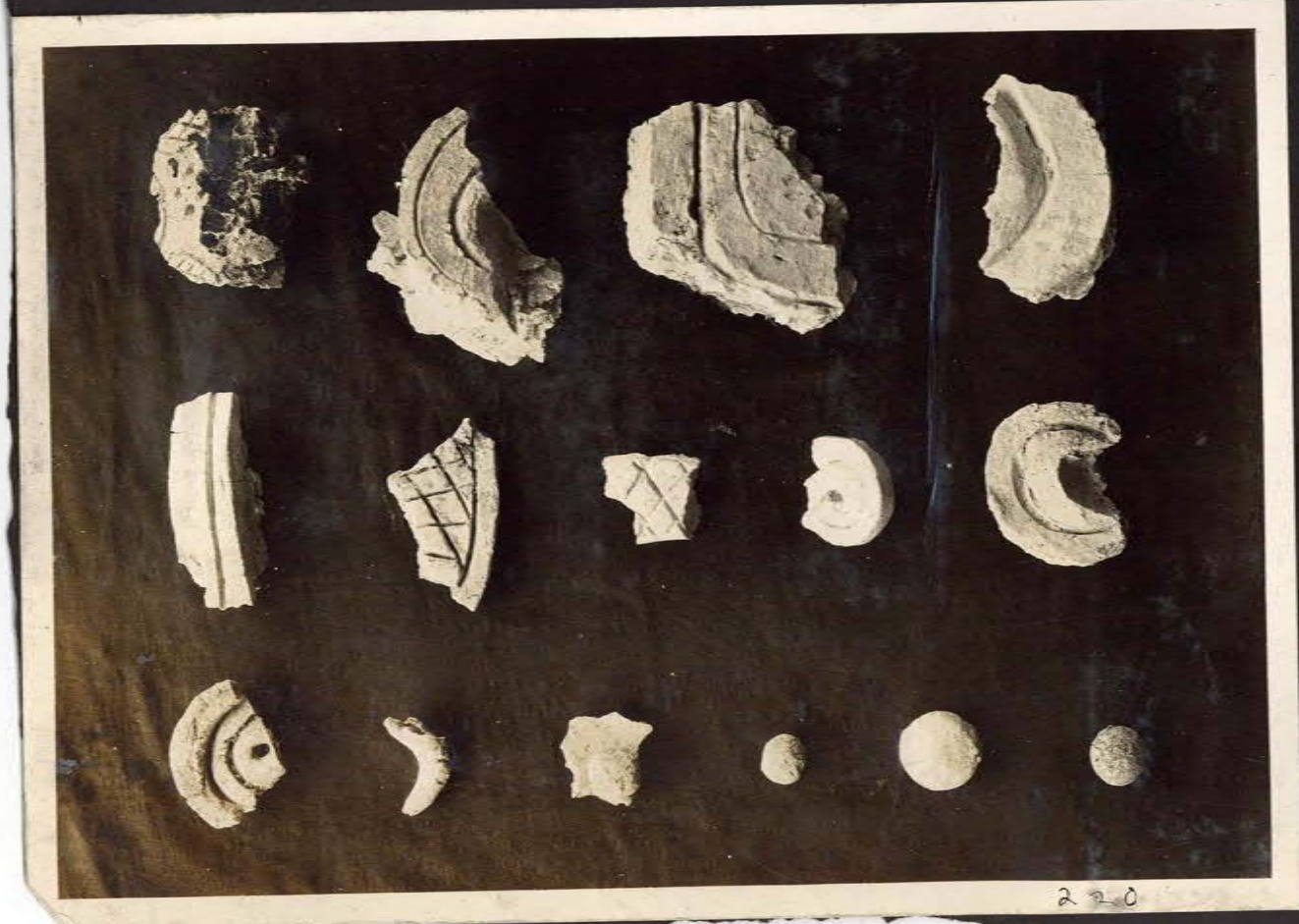
208



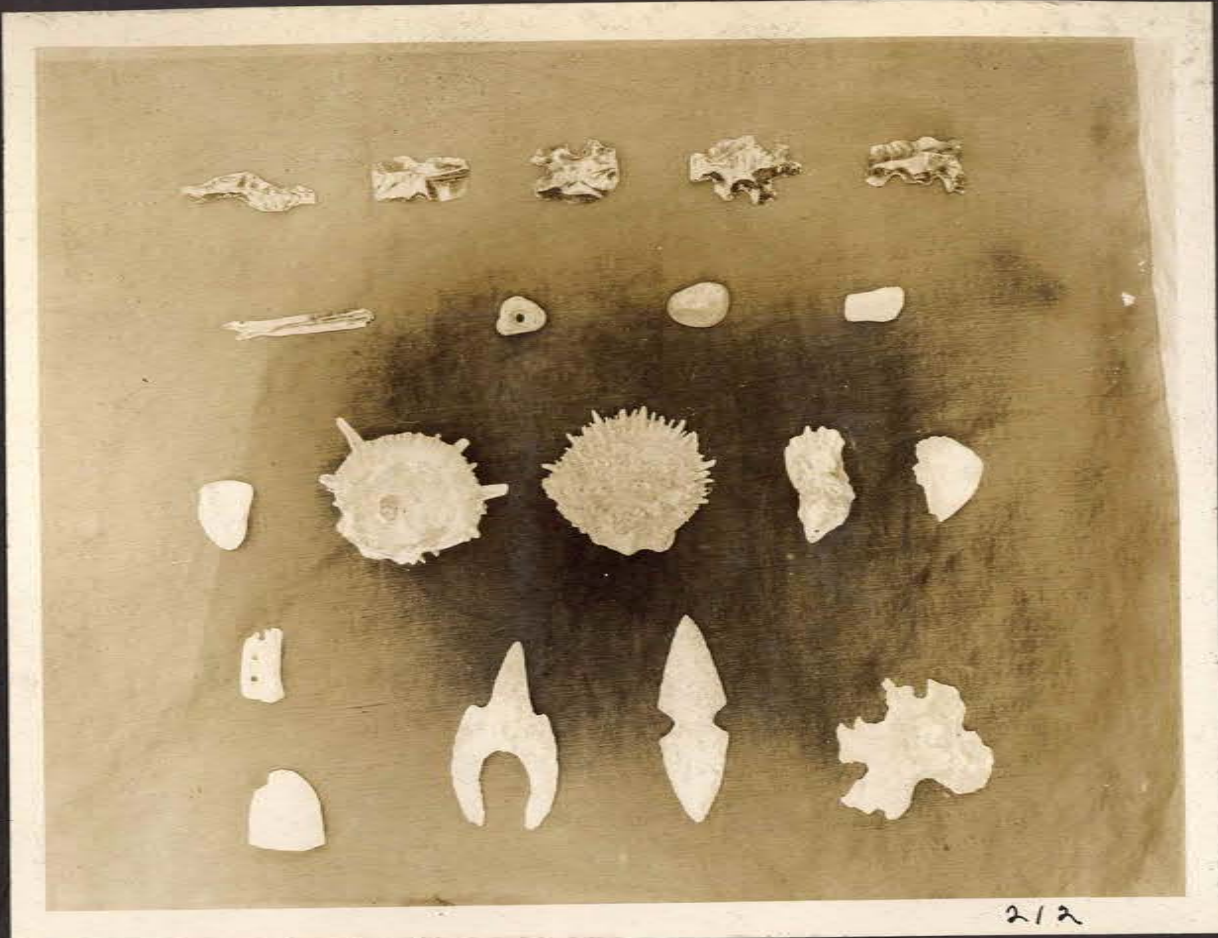
209



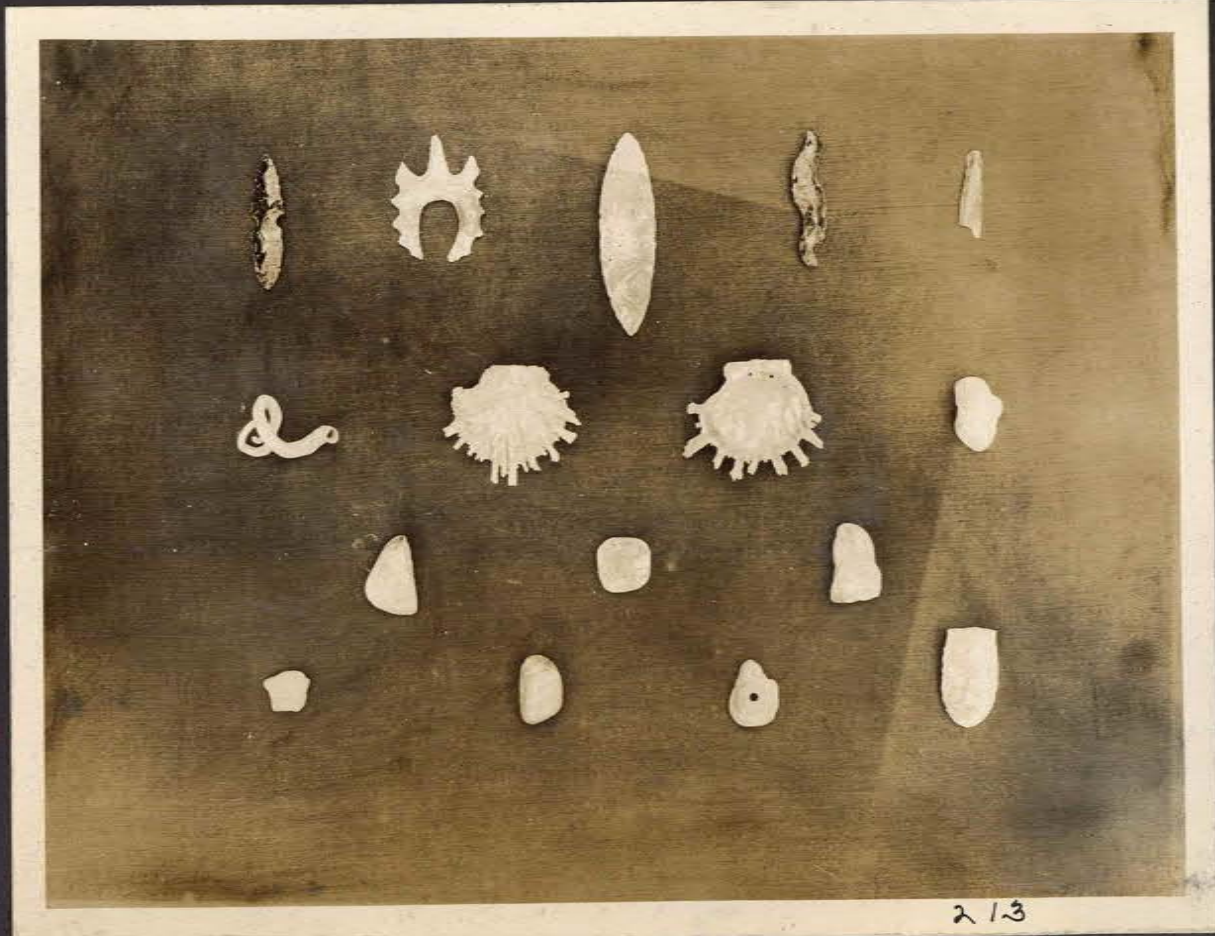
54-14333f



54-14333f



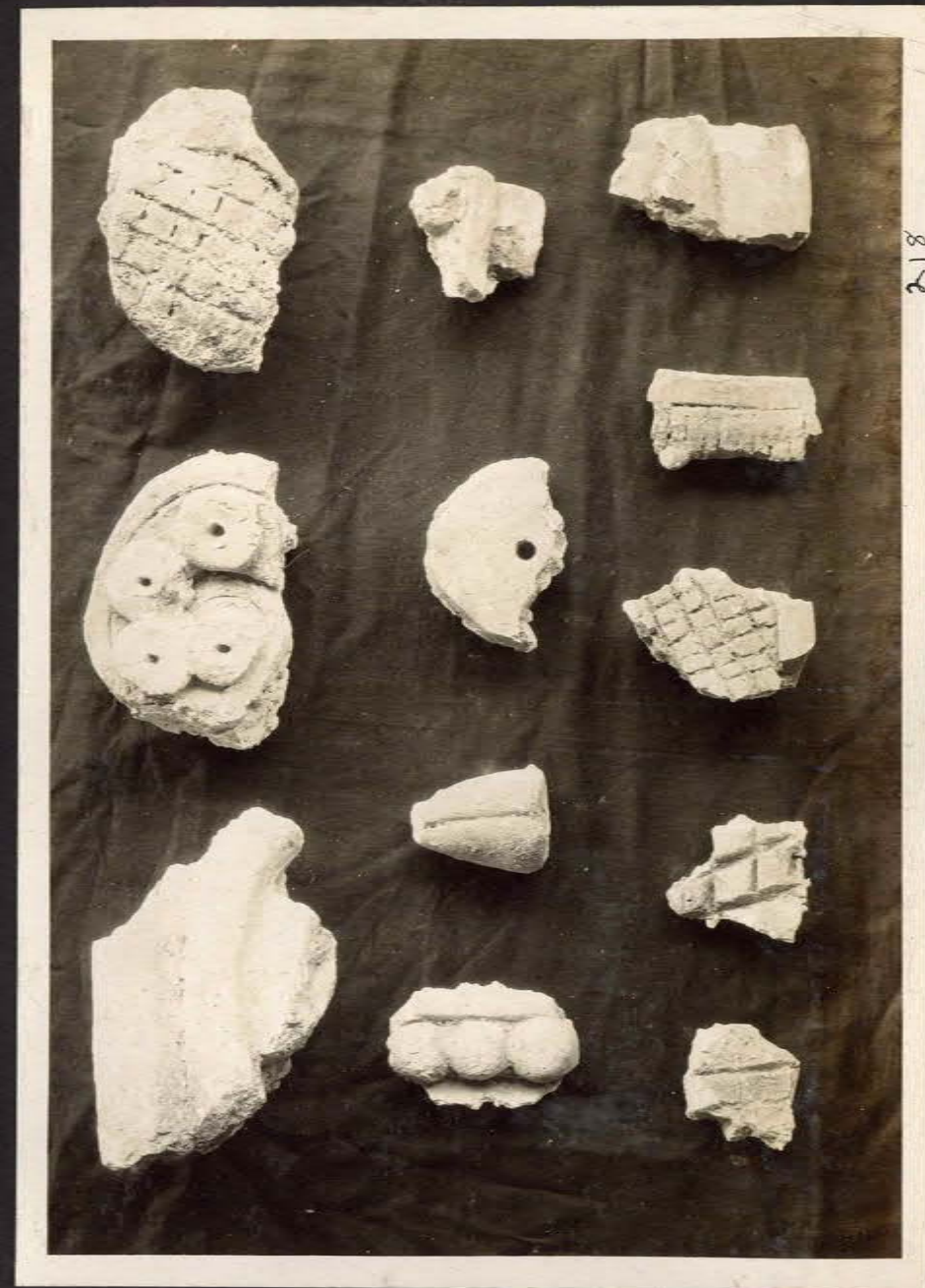
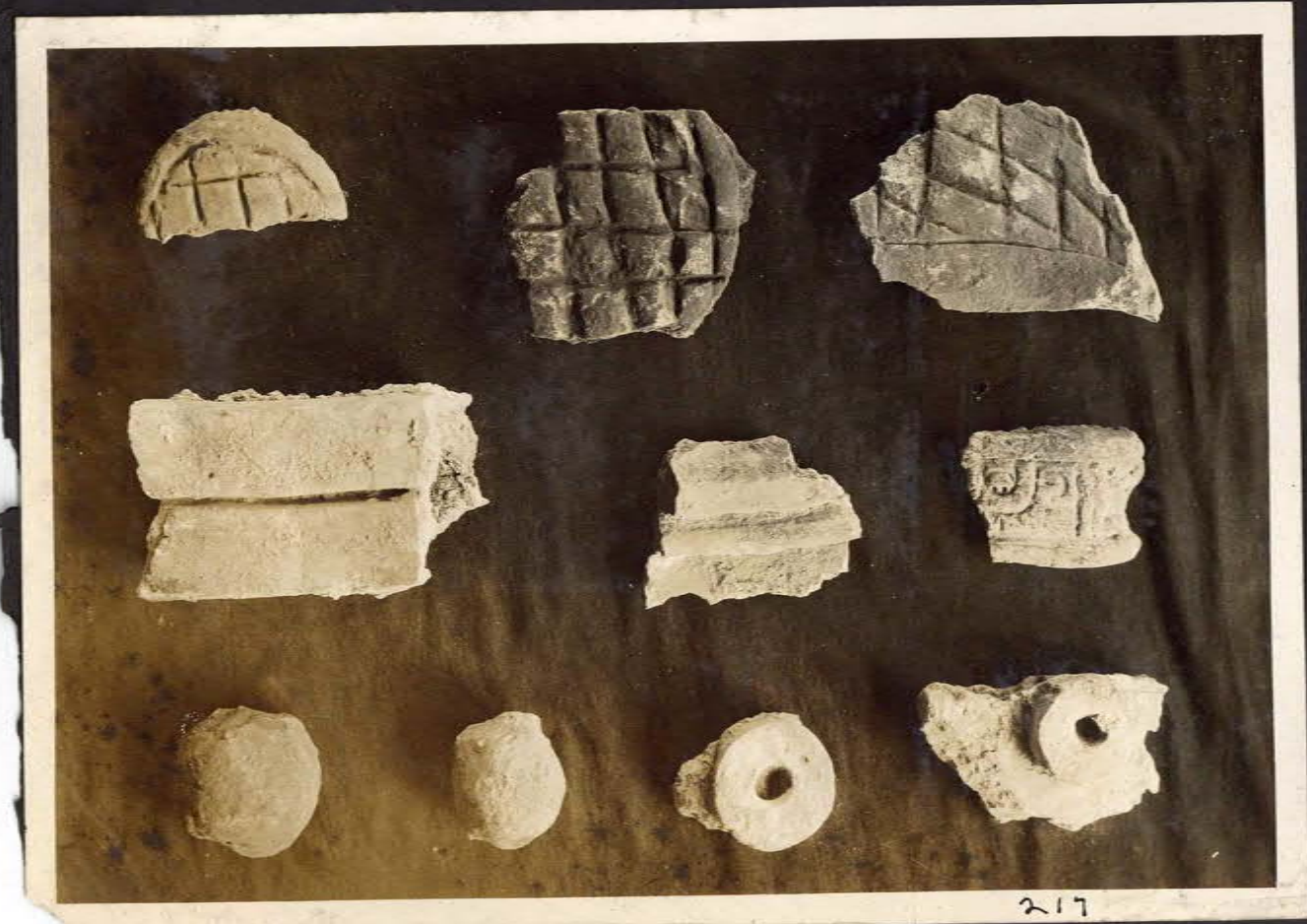
212

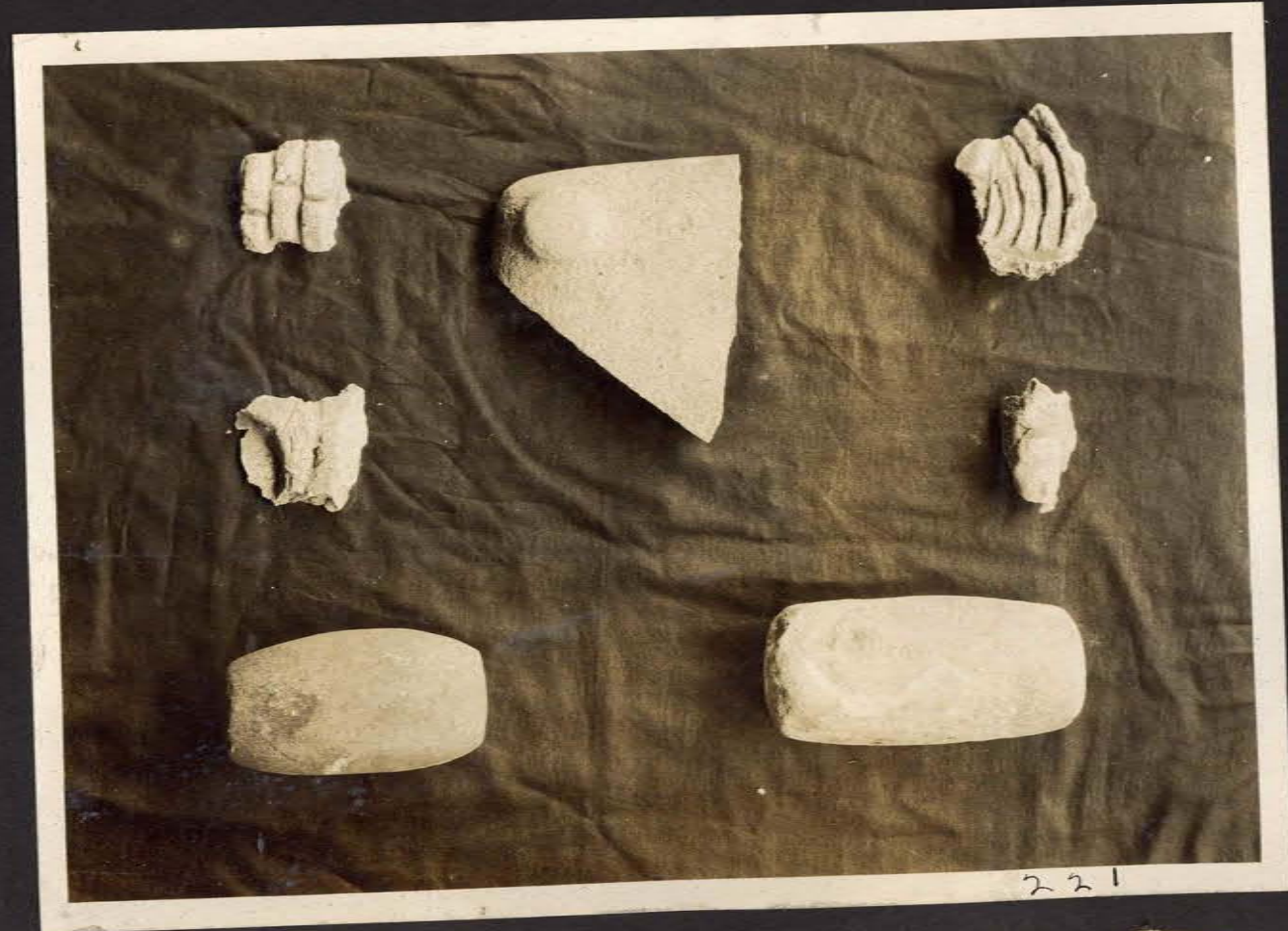


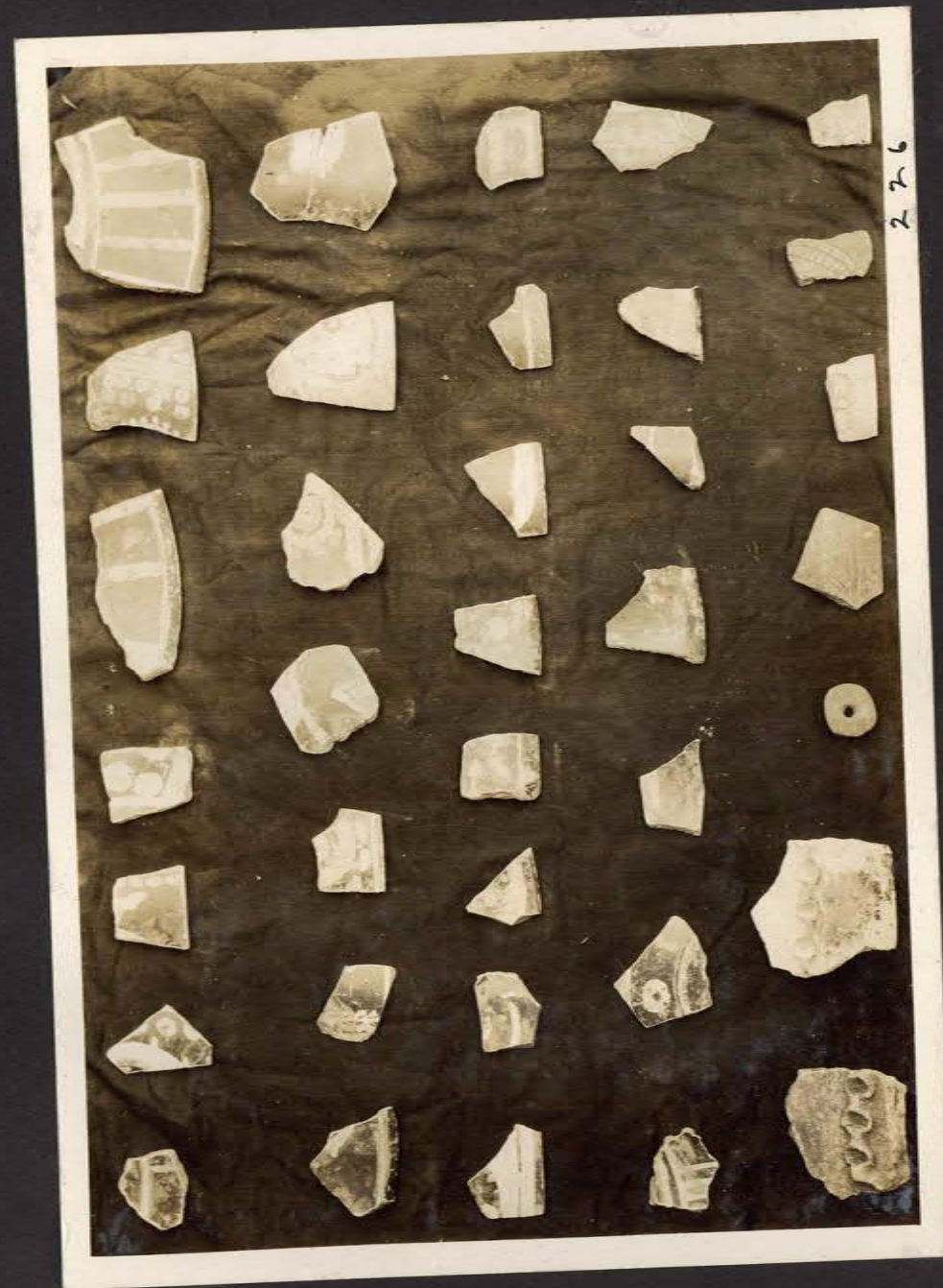
213



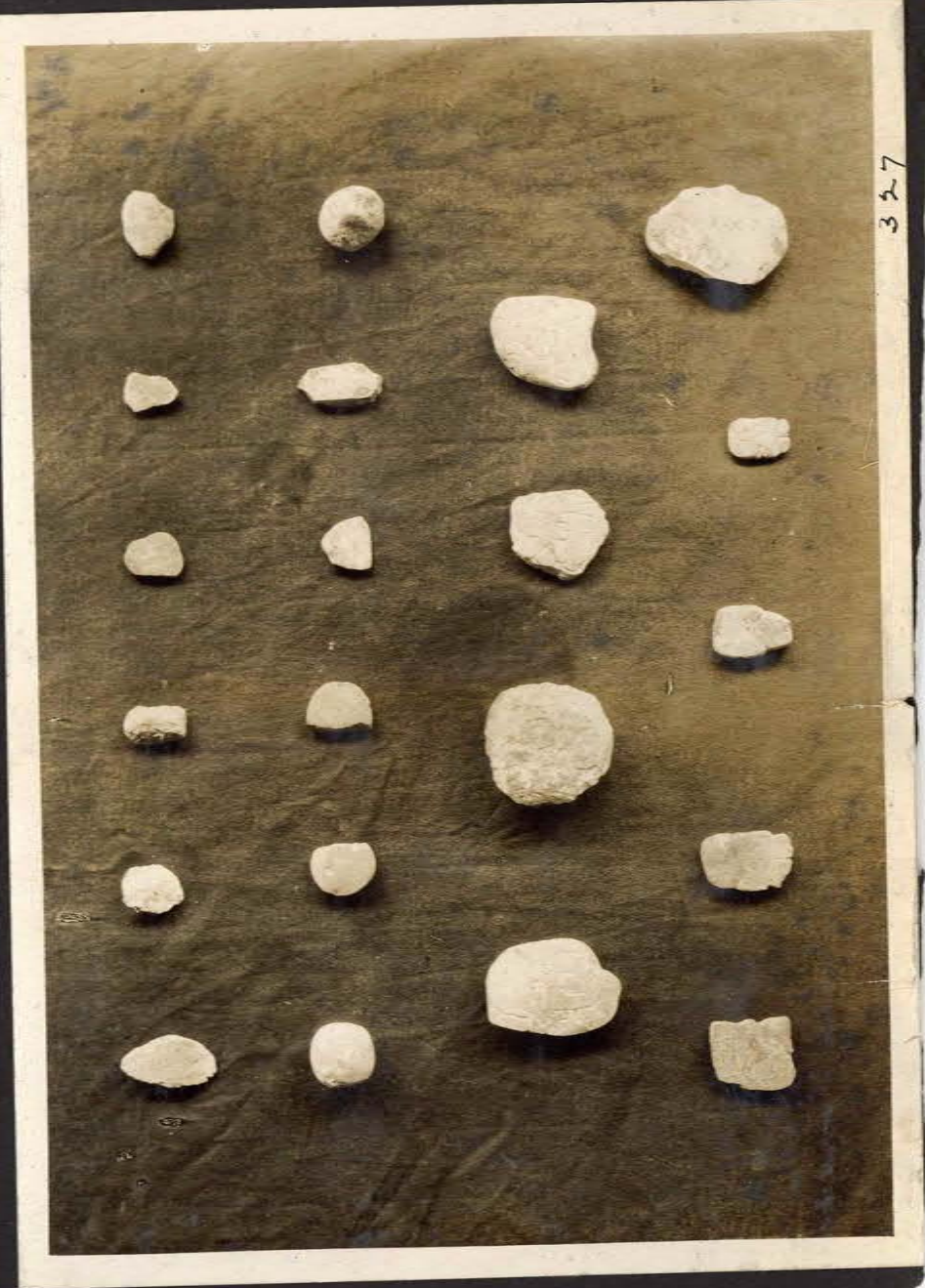
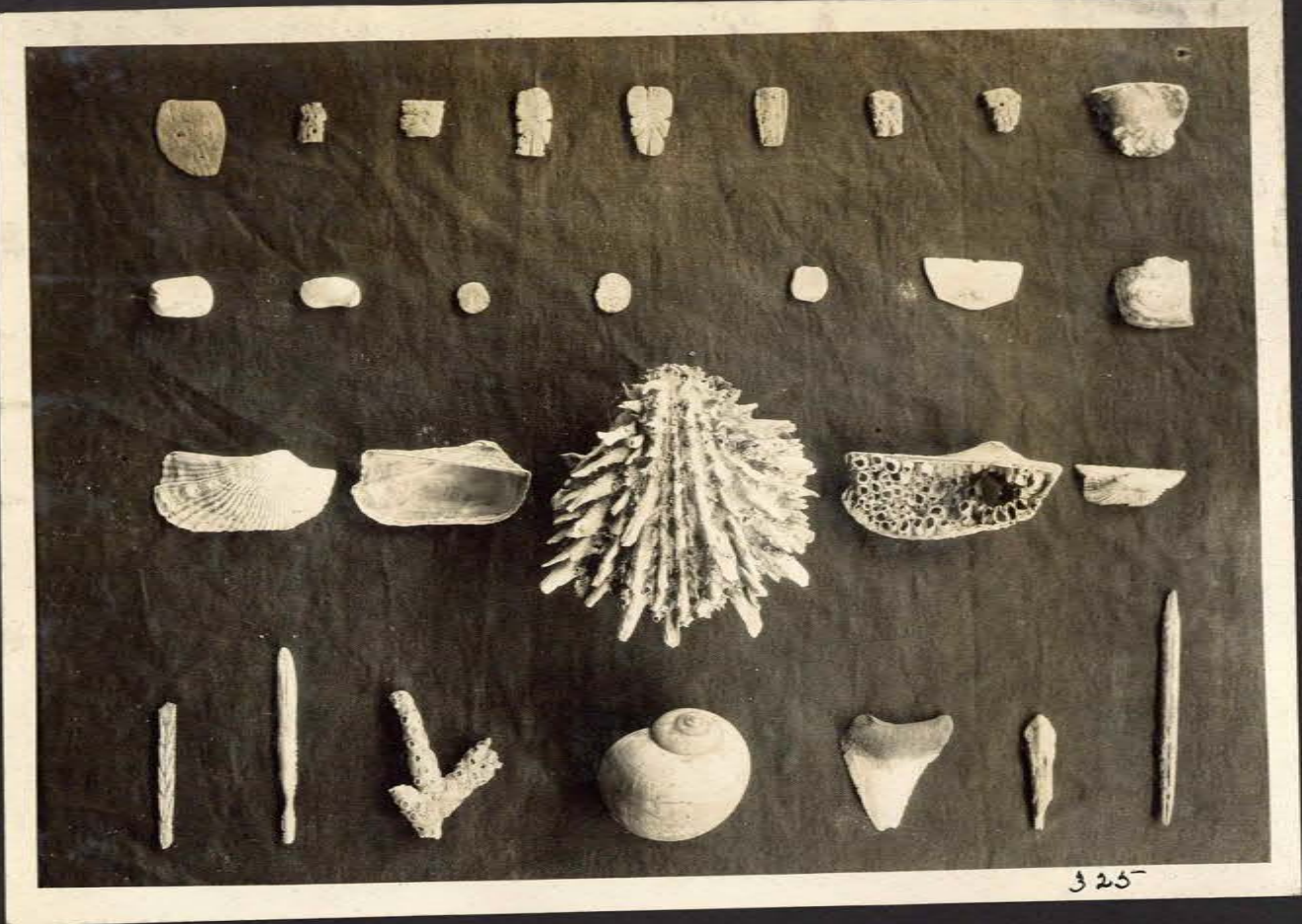
214







71

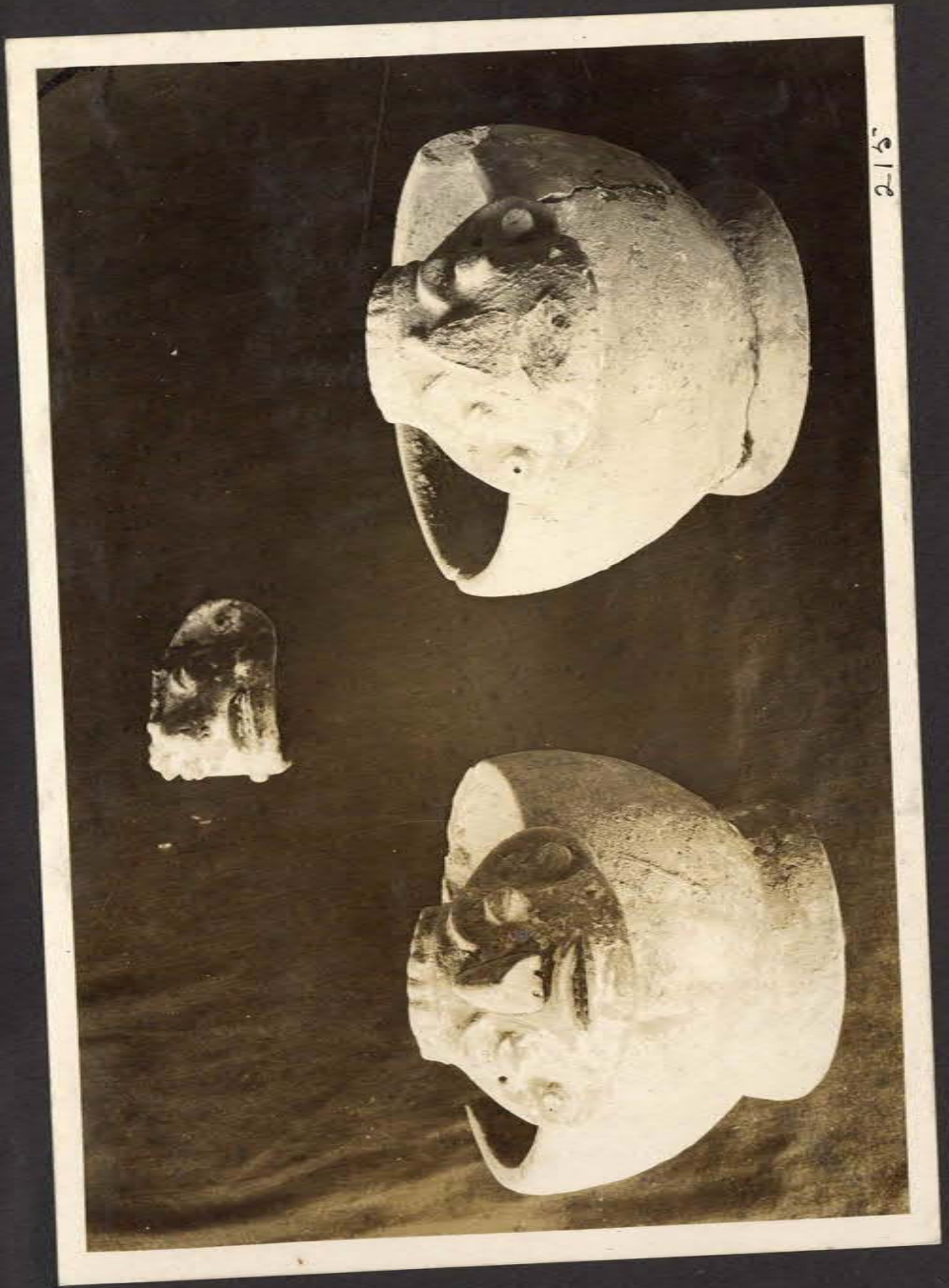




328



329



2-15



227

