

39-251
1st
2nd

39-252



39-251 Chuscut -
prand m. 1906



39-258

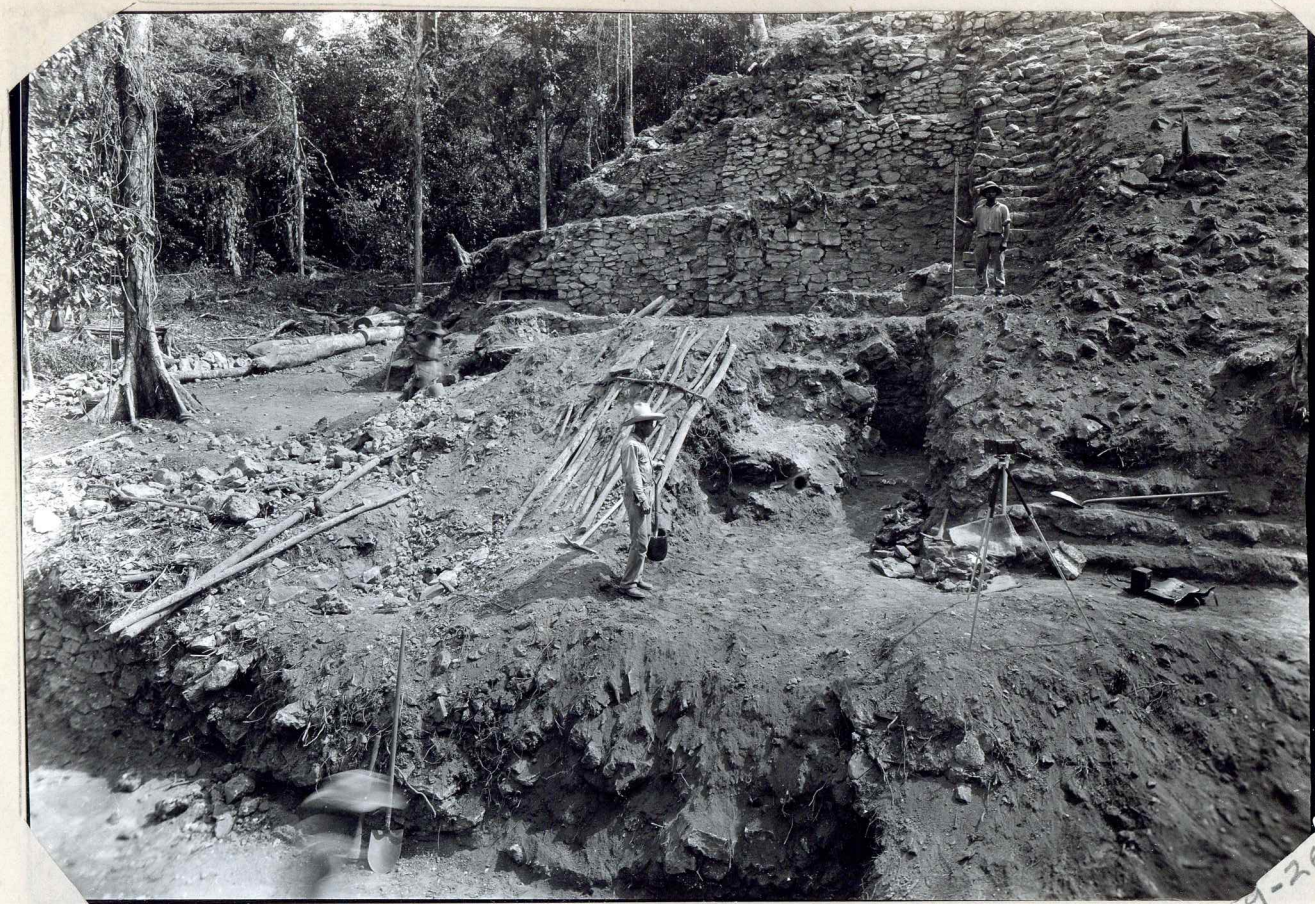
39-258



39-259

39-259

39/253 - neg missing (no neg)
 1254 - neg ok, print missing - (Musk
 1255 - no neg or print
 1256 - neg ok - print missing
 1257 neg ok - " "



39-260

Э. П. МИЛЛЕР — КОДЫК



39-261



39-262



39-263

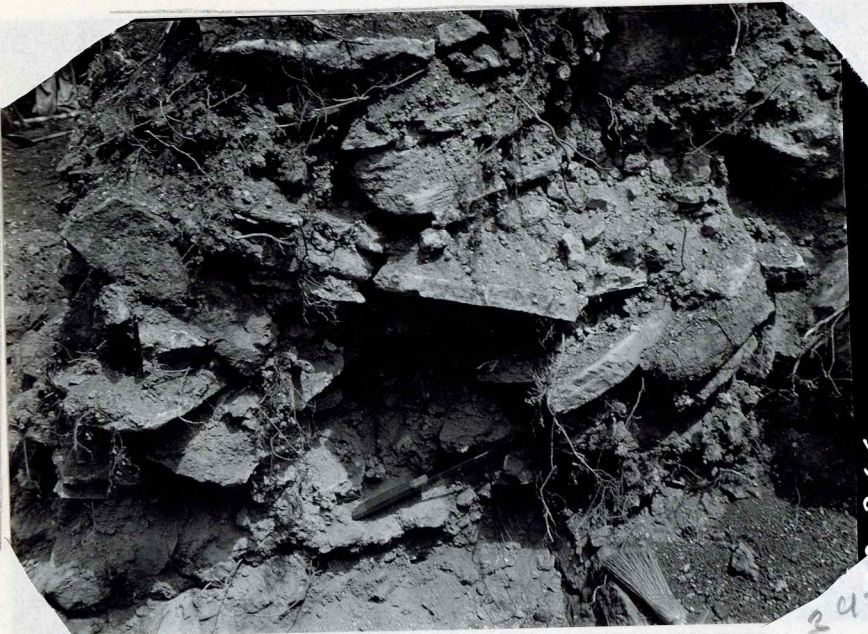


39-264



39-265

39-265



39-266

39-266



39-267

39-267



39-269
39-269



39-271
39-271



39-268
39-268

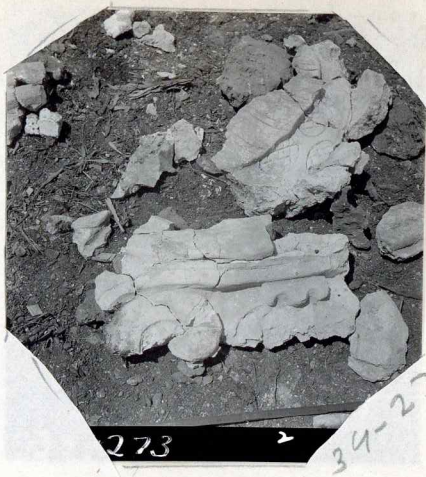


39-270
39-270



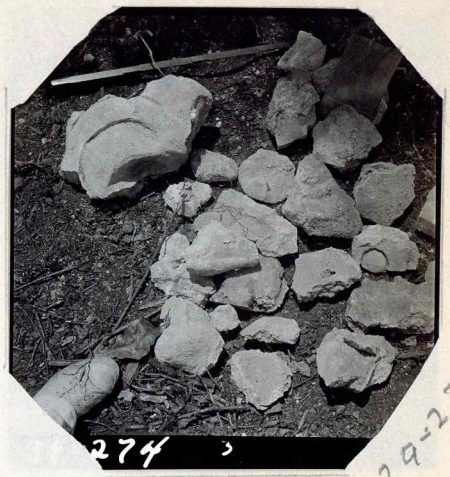
39-272 1

39-272



273 2

39-273



274 3

39-274

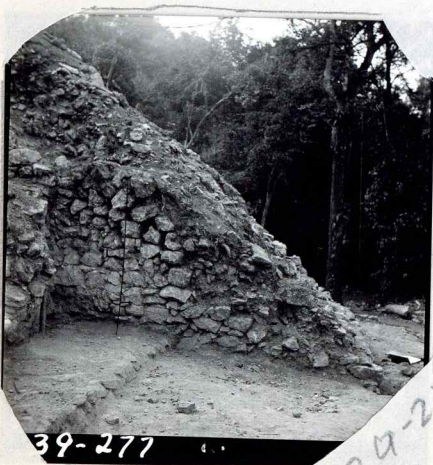


39-275 4

39-275



39-276



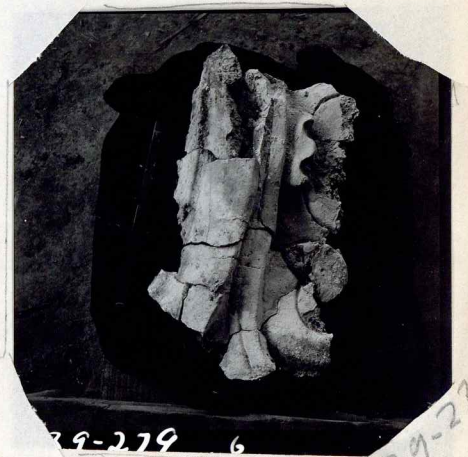
39-277

39-277



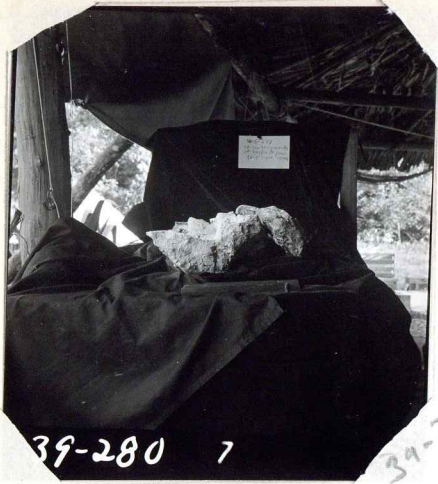
39-278 5

39-278



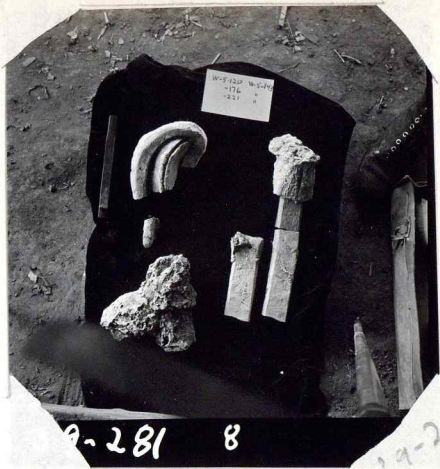
39-279 6

39-279



39-280 7

39-280



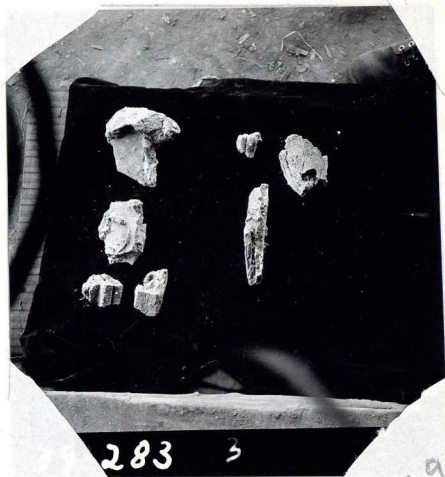
39-281 8

39-281



39-282 9

39-282



39-283 3

39-283



39-284 4

39-284

SPZ-0





39-286

39-286

3-22-26





687-6

595-25



187-10

62-29



887-6

595-25



89-290 (187)

62-29



54-204

293



567-6

54-204
35



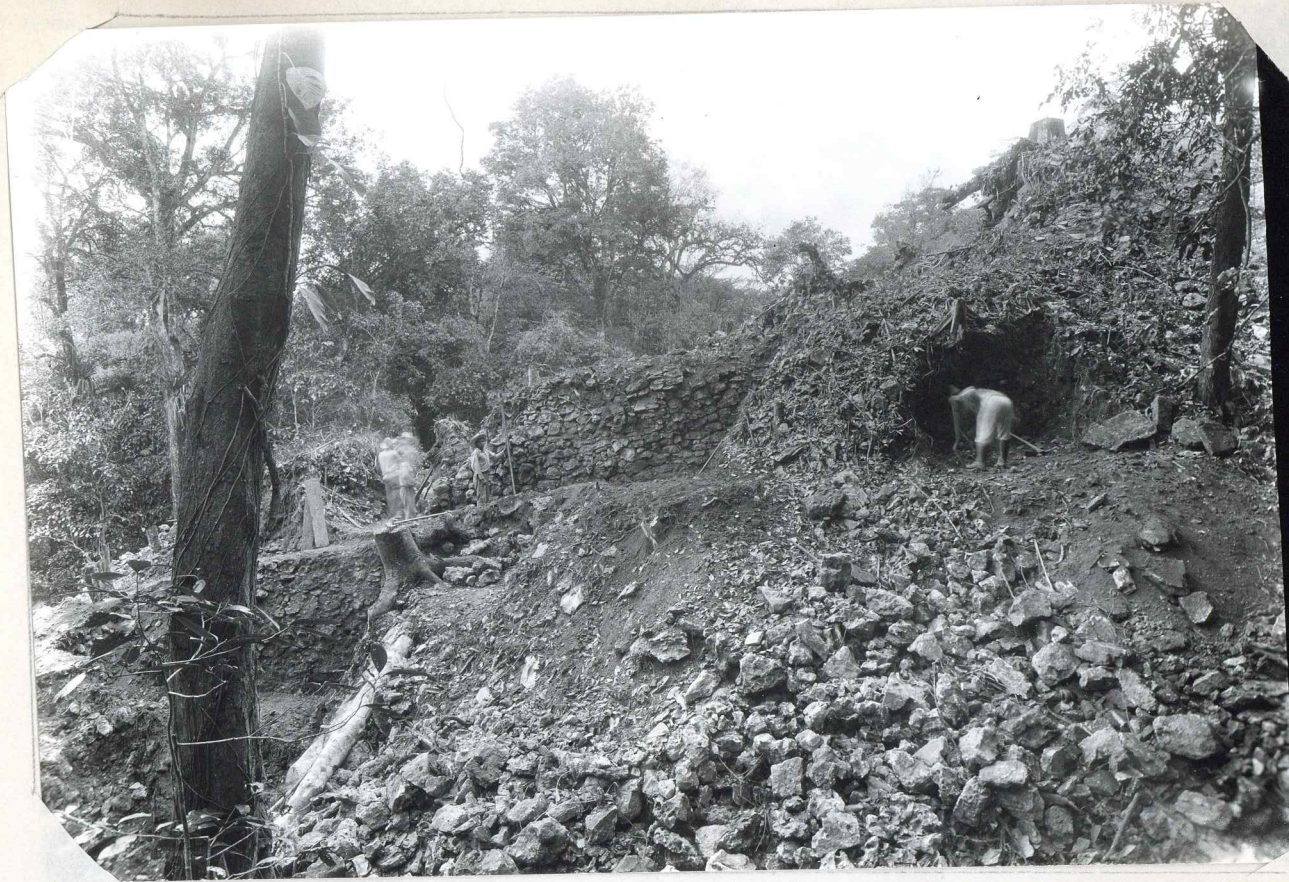
267-6

54-204



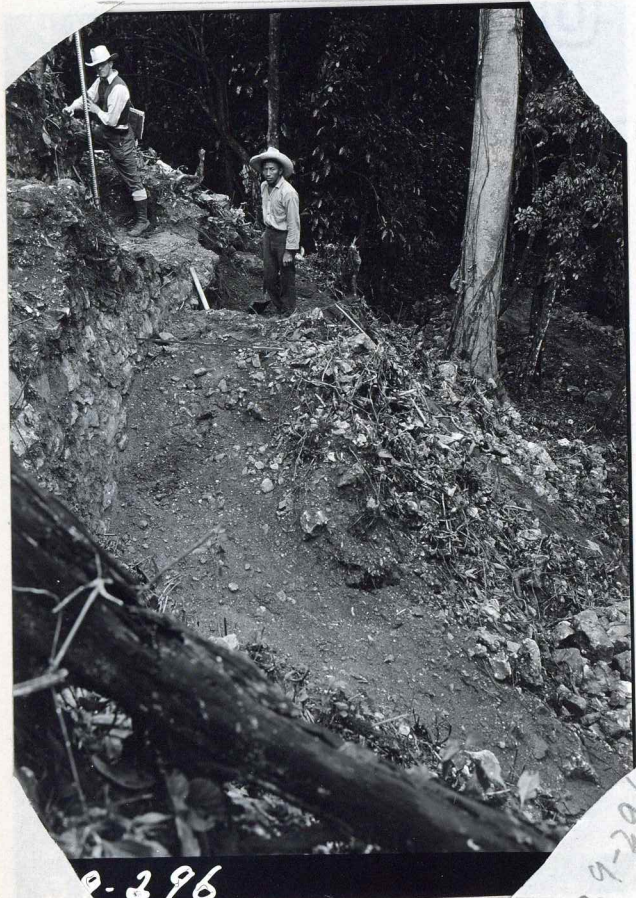
462-6

54-204



39-297

39-297



39-296

39-296

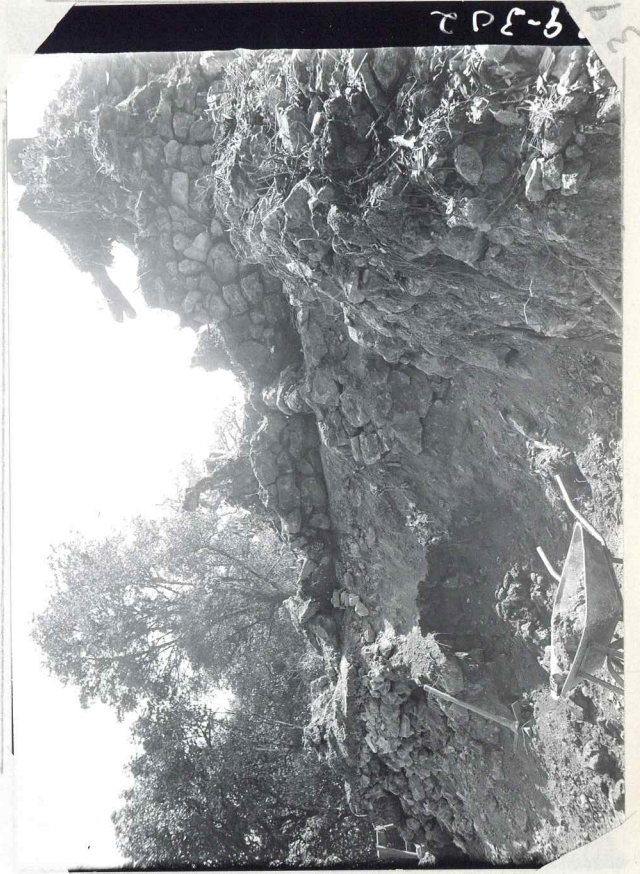


39-298

39-298



29-300
29-300



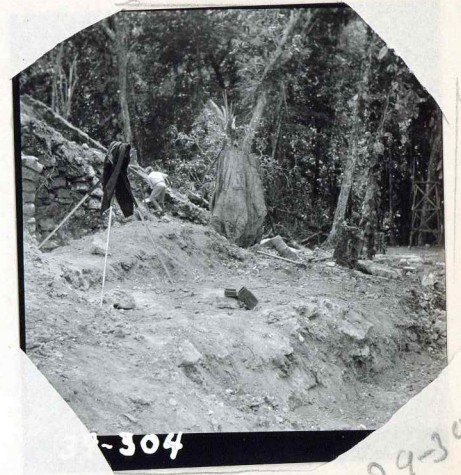
29-302
29-302



29-299
29-299



29-301
29-301



39-304



ASTORIA - ILLINOIS - KODAK 118

39-305



306

39-306



39-307

39-307



39-308

39-308
17



39-309



39-310 2

39-310



39-311

39-311



39-312



39-313

39-313



39-314

39-314



39-317

39-317



39-316

39-316



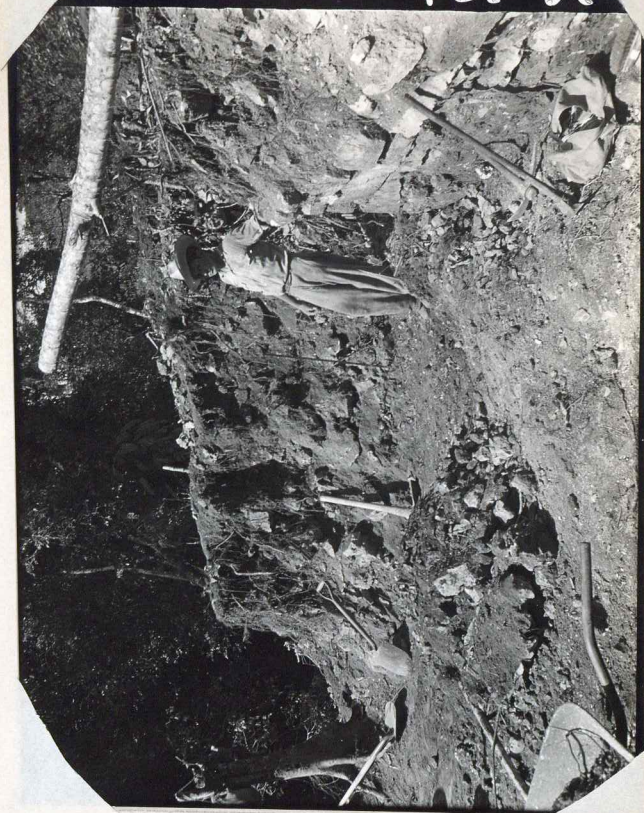
39-315

39-315



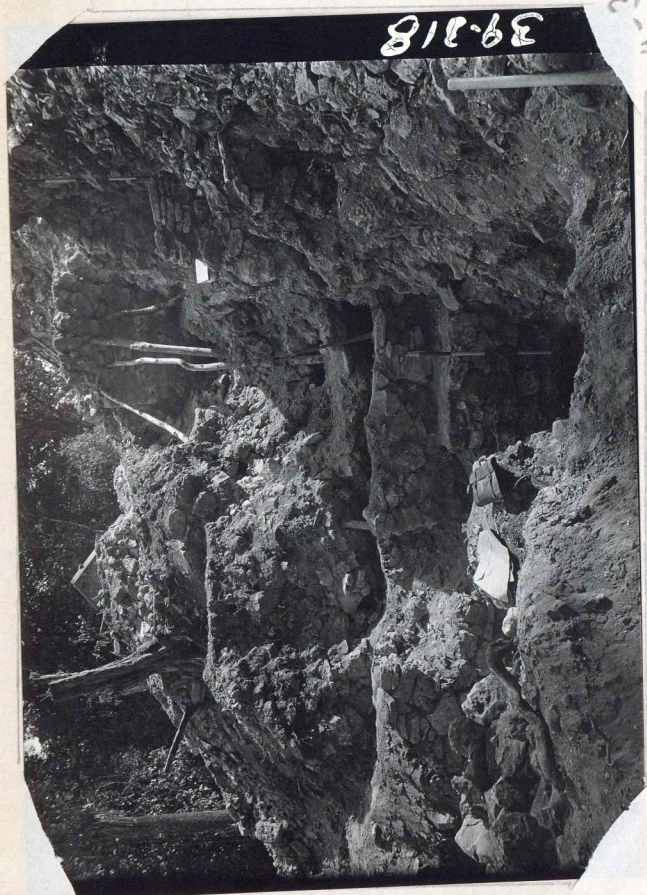
39-319

612-5



39-320

39-320



39-318

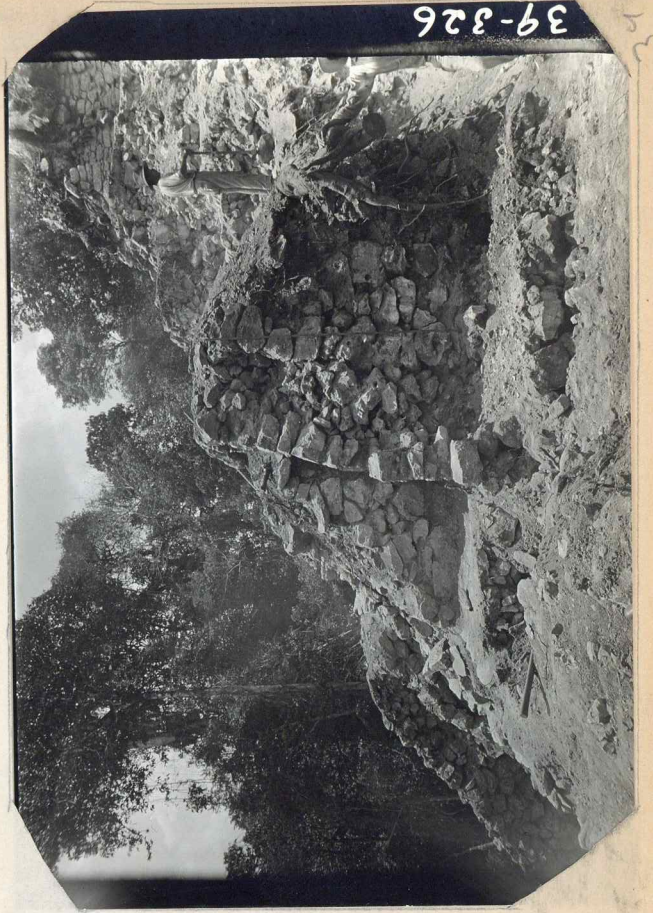
39-318



39-321

39-321

39-326



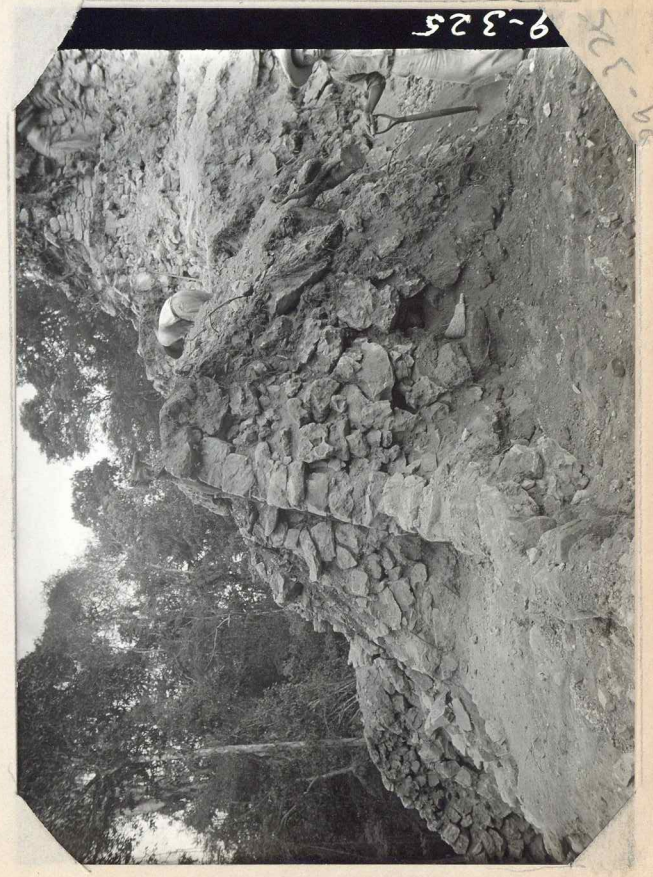
39-326

39-324



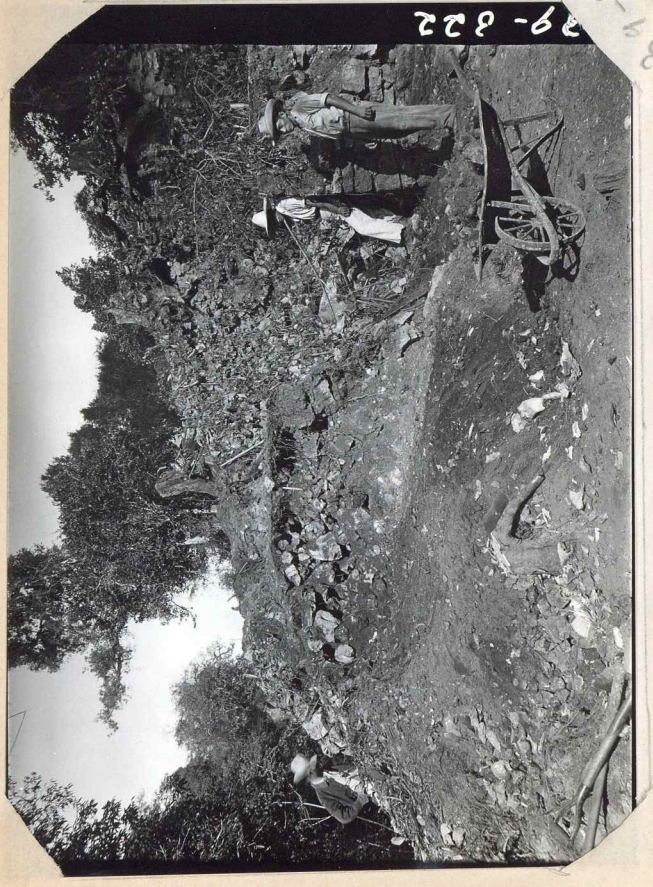
39-324

39-325



39-325

39-322



39-322

29-330



29-330

29-329



29-329

29-331



29-331

29-328



29-328

29-327

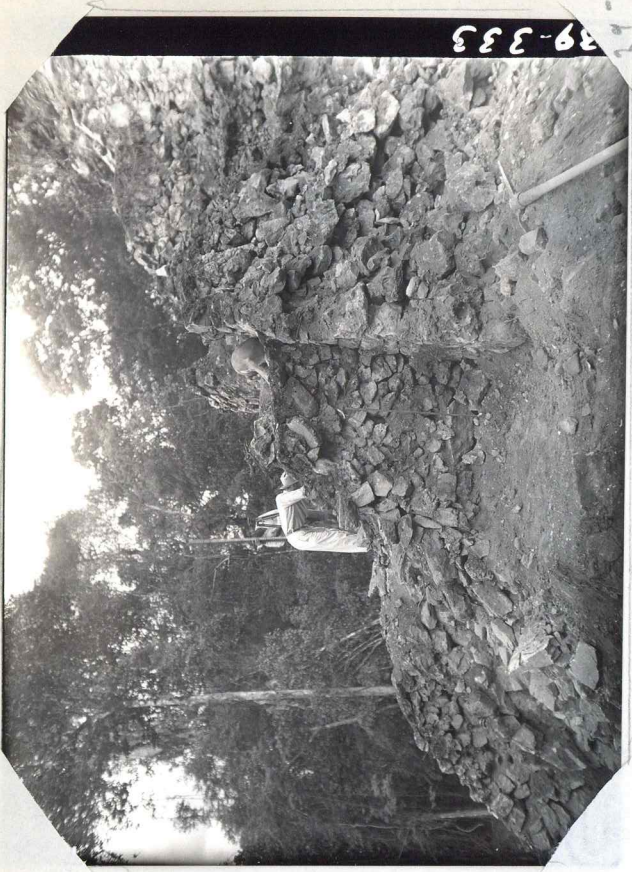


29-327

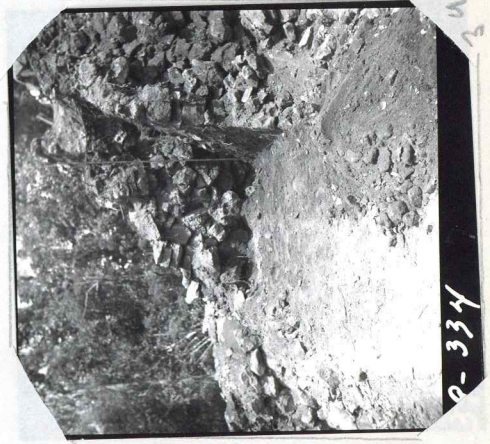
39-335



39-333



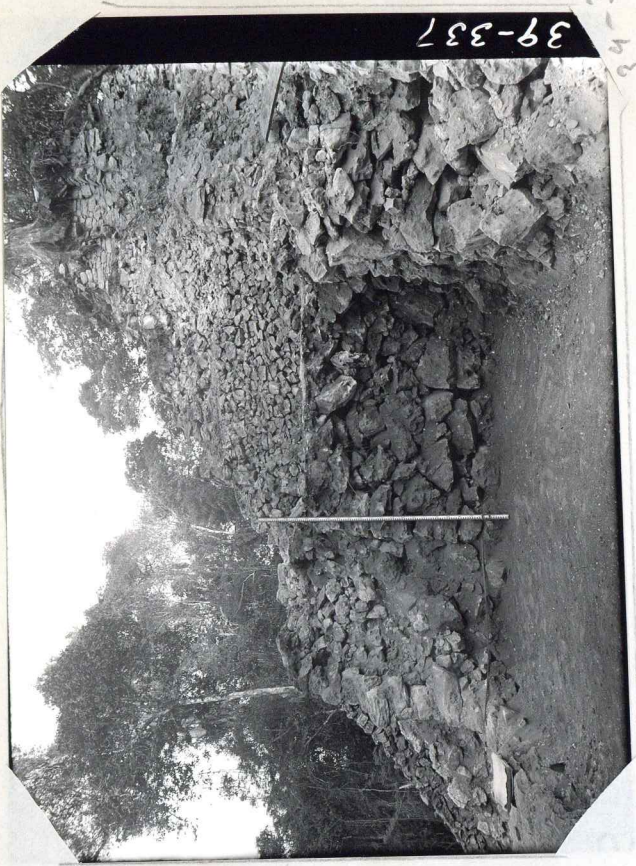
39-334



39-332

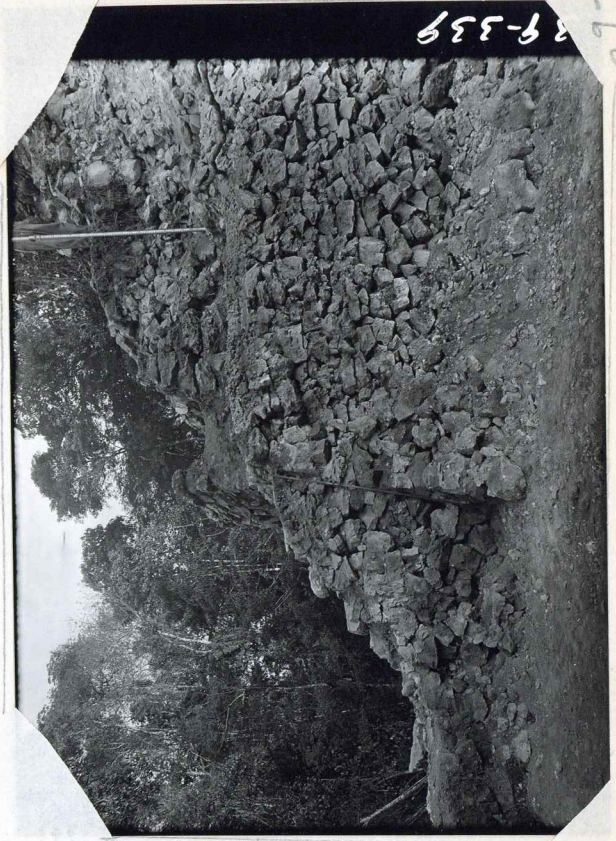


39-332



39-337

39-337



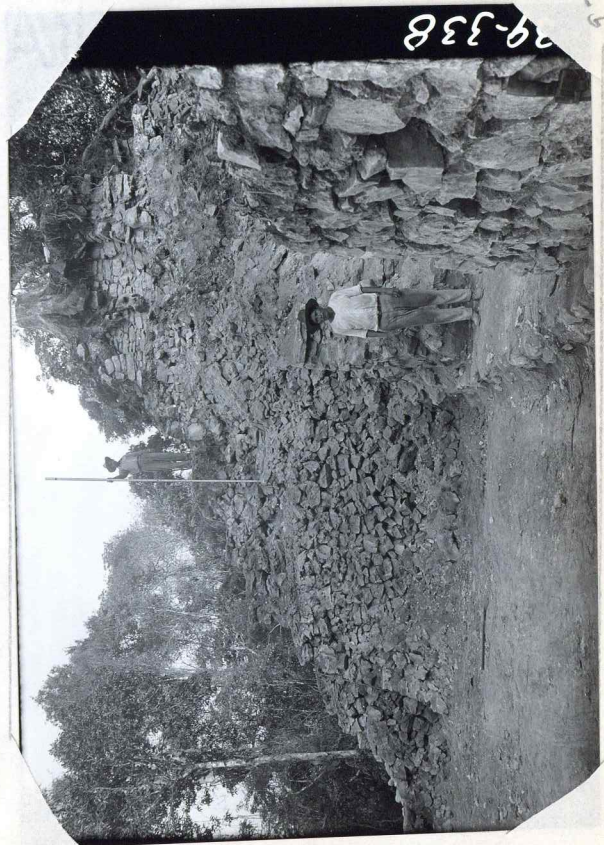
39-339

39-339



39-336

39-336



39-338

39-338



9-347

27-347



9-348

27-348



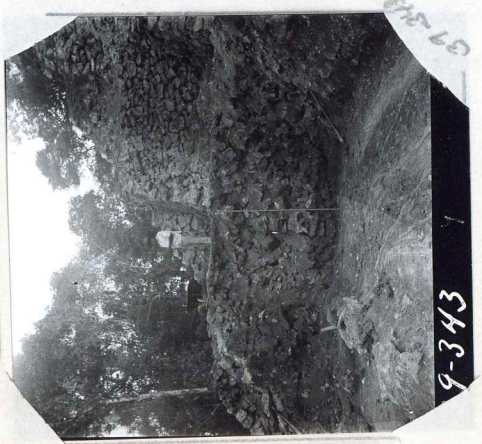
9-349

27-349



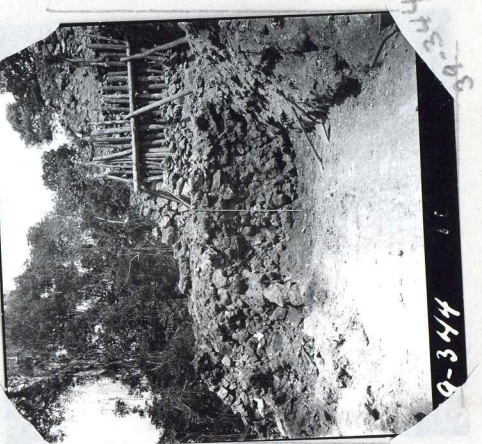
9-350

27-350



9-343

27-343



9-344

27-344



9-345

27-345



9-346

27-346



9-340

27-340



9-341

27-341



9-342

27-342



39-351

39-351



39-352

39-352



39-353

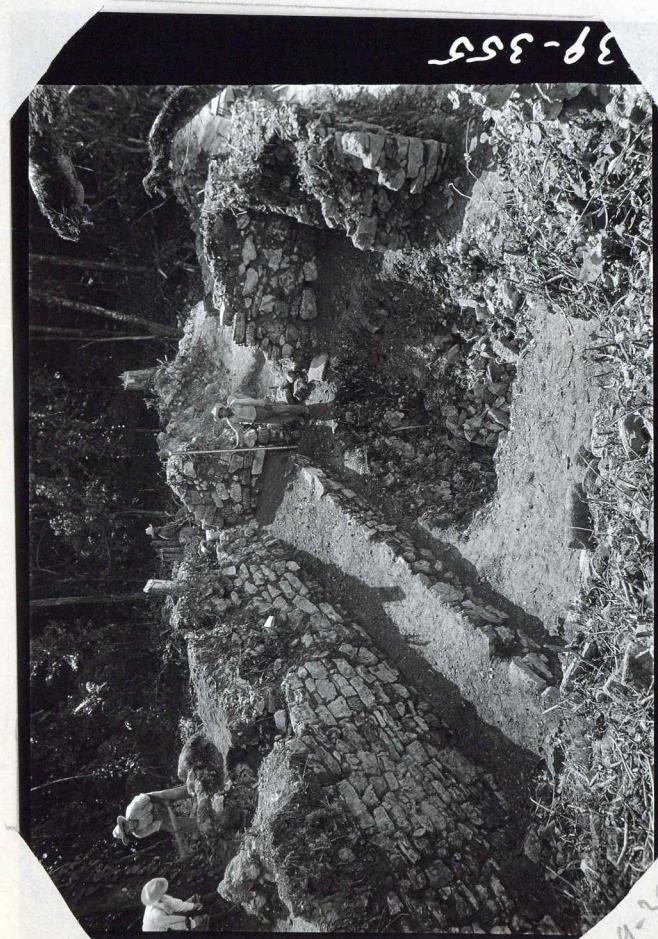


JBC

KADYK — ETATIN — NANTIA

39-354

39-354



39-355

39-355



39-356

39-356



39-367



39-358

39-35



361

39-361



39-359



362

39-363



39-360



363

39-363

39-364 - Pavement
No. 0.1C

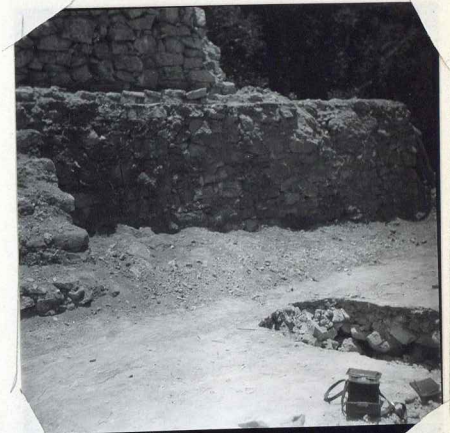


39-365



39-367

39-317



39-369

39-304



39-366

39-368



39-370

39-370



39-368

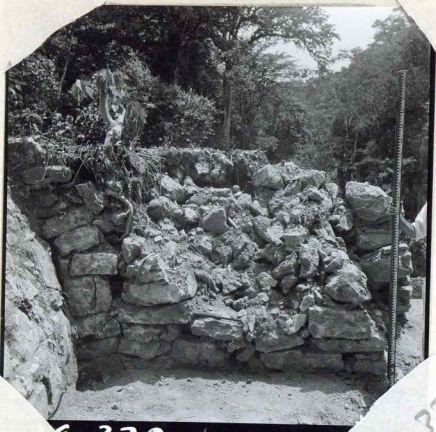
39-368



39-371

39-371

29



34-372

34-372



34-373

34-373



KODAK SAFETY FILM

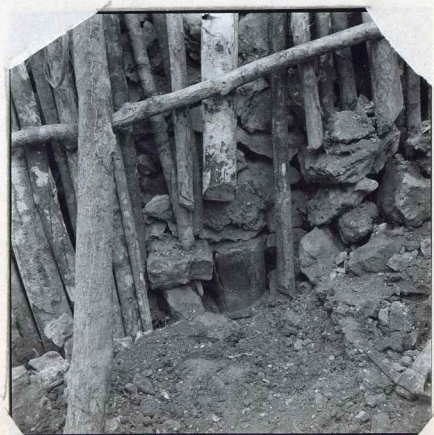
34-374

34-374



34-375

34-375



34-376

34-376



39-377

39-377



381

39-381



9-382

39-382



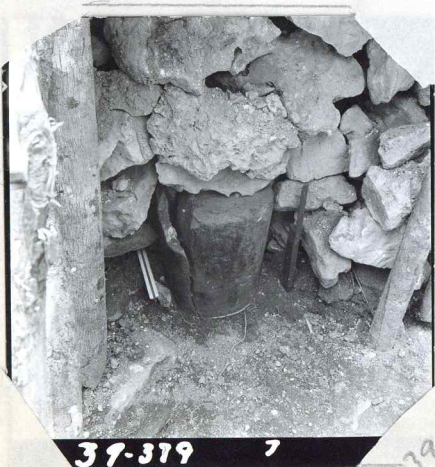
39-378

39-378



3-383

39-383



39-379 7

39-379



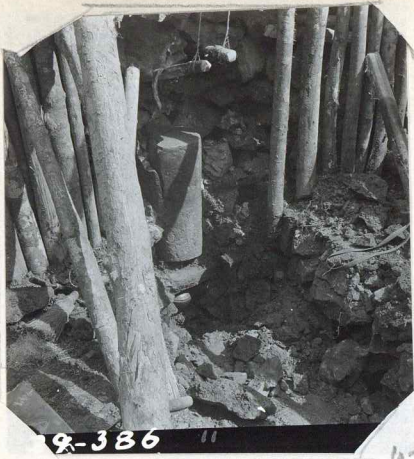
39-380 11

39-380



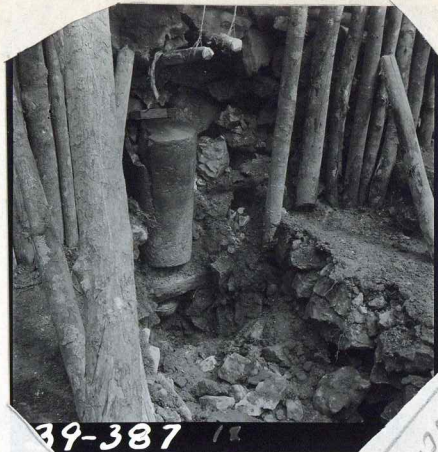
85 4 10

39-385 31



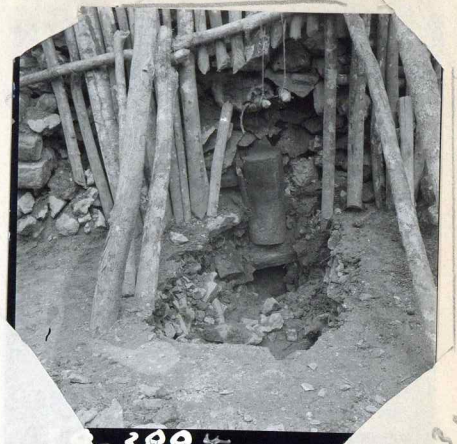
39-386

39-388



39-387

39-387



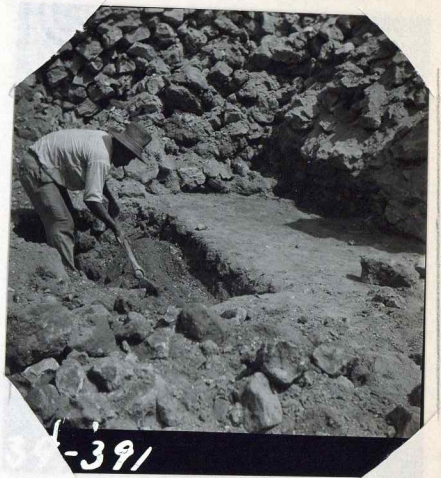
39-388

39-388



39-389

39-389



39-391

39-391



39-390

39-390



39-392

39-392



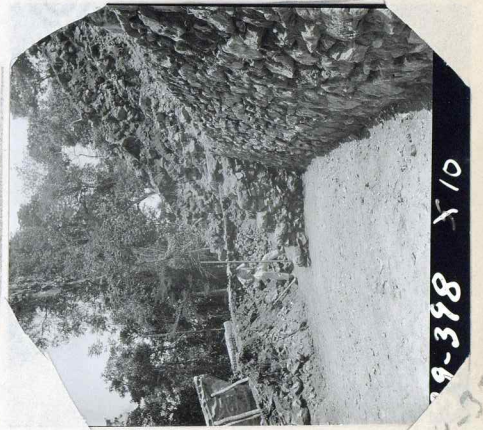
39-393



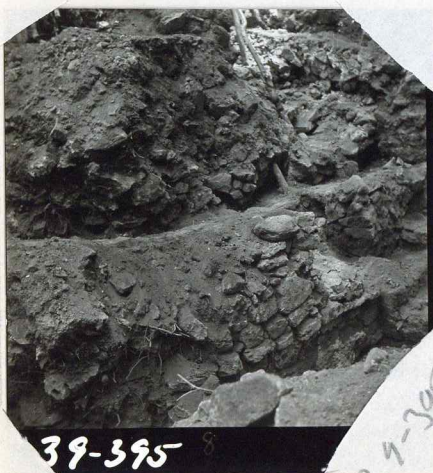
39-397



39-394

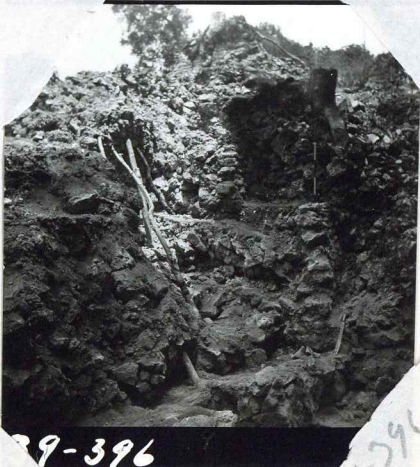


39-398
34-378



39-395

39-395



39-396

39-396



399 312

39-399
33

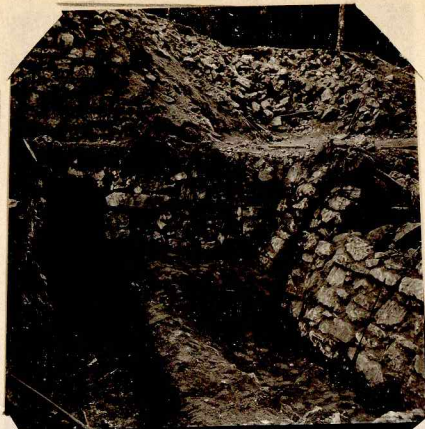
387

Piedras Negras, Stela 25

Photographs taken in 1939, at night, unless otherwise specified, with gasoline lantern, night exposures about 1½ minutes at F.11. ~~Another lantern~~. In addition two flashlights moved about to lighten shadows. Another lantern or better reflection would be better. Verichrome film, 9x12 cms. Results could have been improved with time to develop test film exposures, which was lacking.

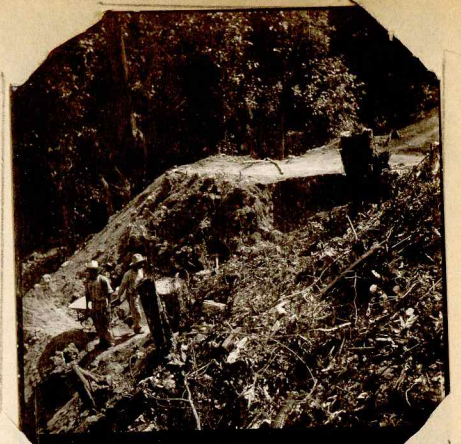
Detail shots of glyphs are overlapping, and repeated with shift in position of light. Content from epigraphists on these detail views, and suggestions for improvement next time, desired.

- 39-472 Complete view, daylight
- 473 Semi-complete view
- 474 Complete view, daylight
- 475 Complete view, at angle
- 476 Glyphs A7 to A12
- 477 Do.
- 478 Glyphs A11 to A15
- 479 Do.
- 480 Lower Design Panel, left
- 481 Do.
- 482 Lower Design panel, right
- 483 Do.
- 484 Upper Design Panel,
- 485 Do., and headdress detail
- 486 Glyphs I10 to I15
- 487 Do.
- 488 Glyphs I6 to I12
- 489 Do.
- 490 Glyphs I2 to I8
- 4901 Do.
- 492 Glyphs F1&2 to I1&2
- 493 Glyphs
- 494 Glyphs A1&2 to F1&2
- 495 Do. and Upper Design panel
- 496 Glyphs A2 to A7
- 497 Do.



39-400

39-400



39-403

a

39-403



39-401



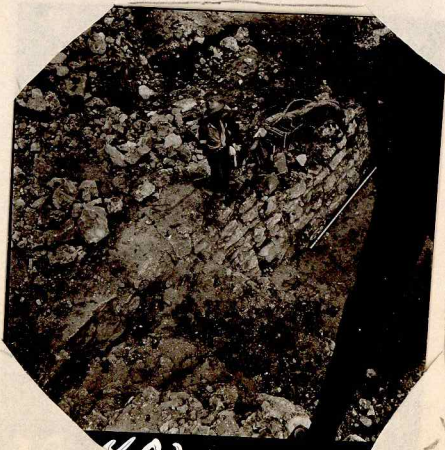
39-404

39-404



39-405

39-405



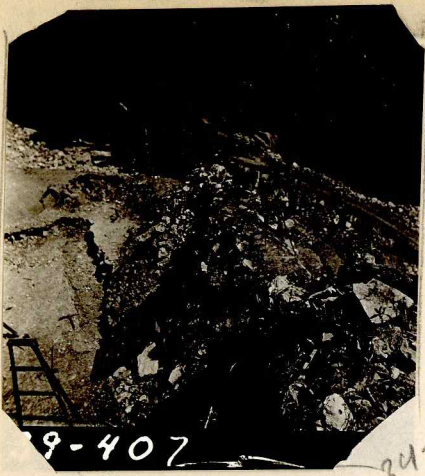
39-402

39-402



39-406

39-406
34



9-407

39-407



39-411

39-411



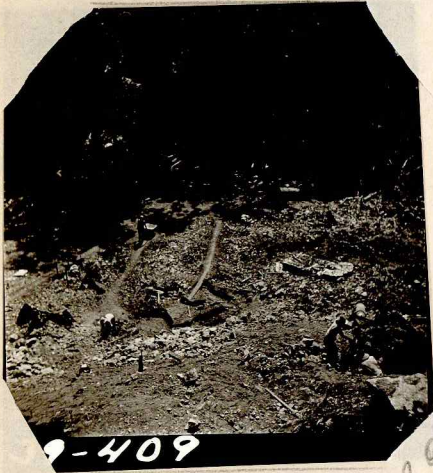
9-408

39-408



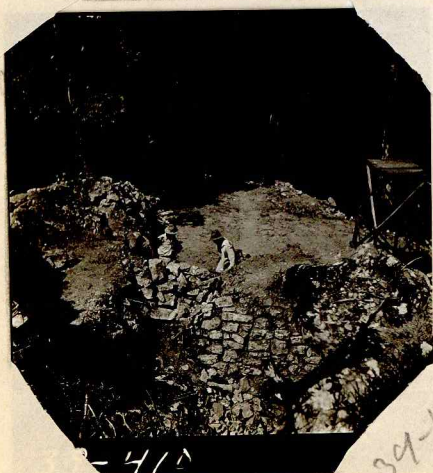
39-412

39-412



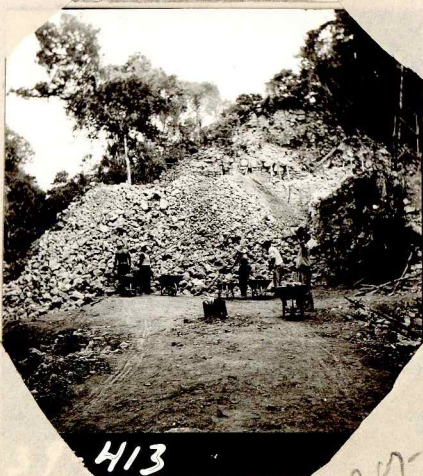
9-409

39-409



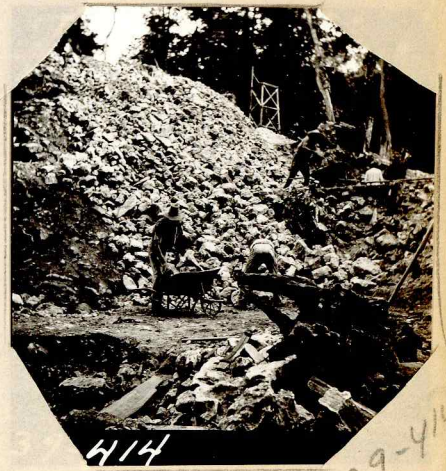
9-410

39-410



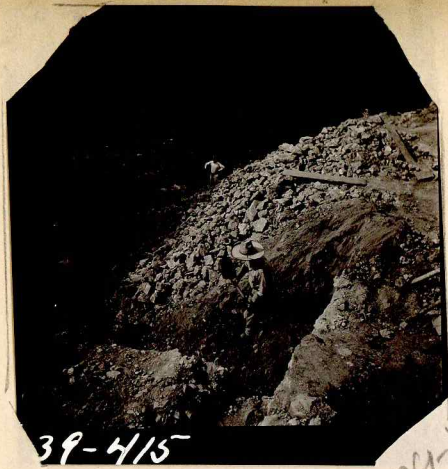
413

39-413



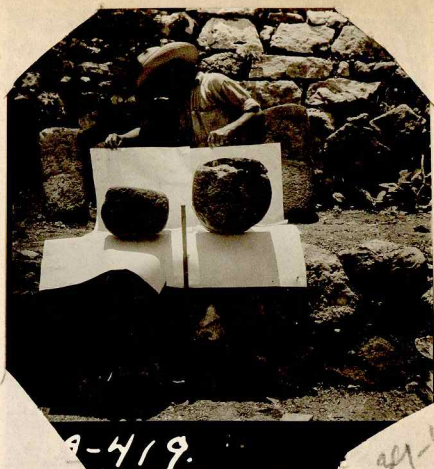
414

39-414



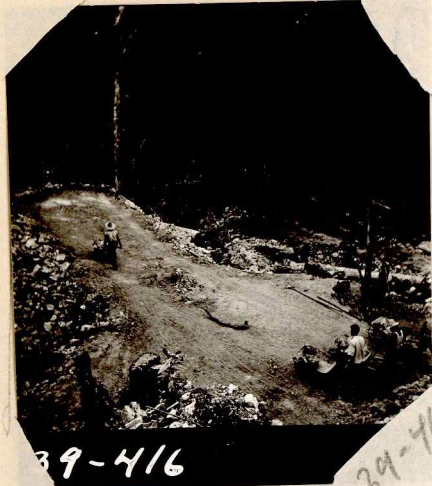
39-415

39-415



39-419

39-419



39-416

39-416

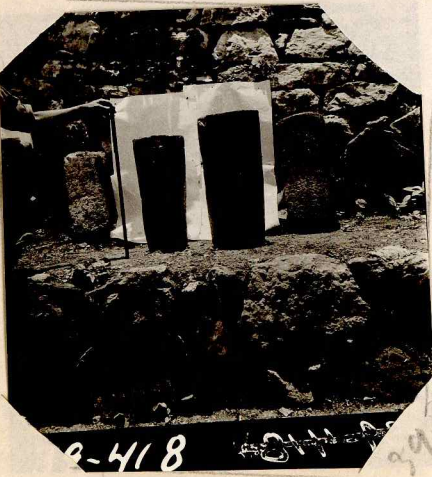


39-420



39-417

39-417



39-418

39-418



39-421

39-421



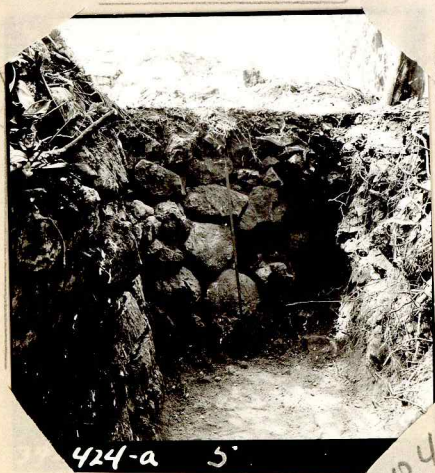
39-422

34-422



39-423

34-420



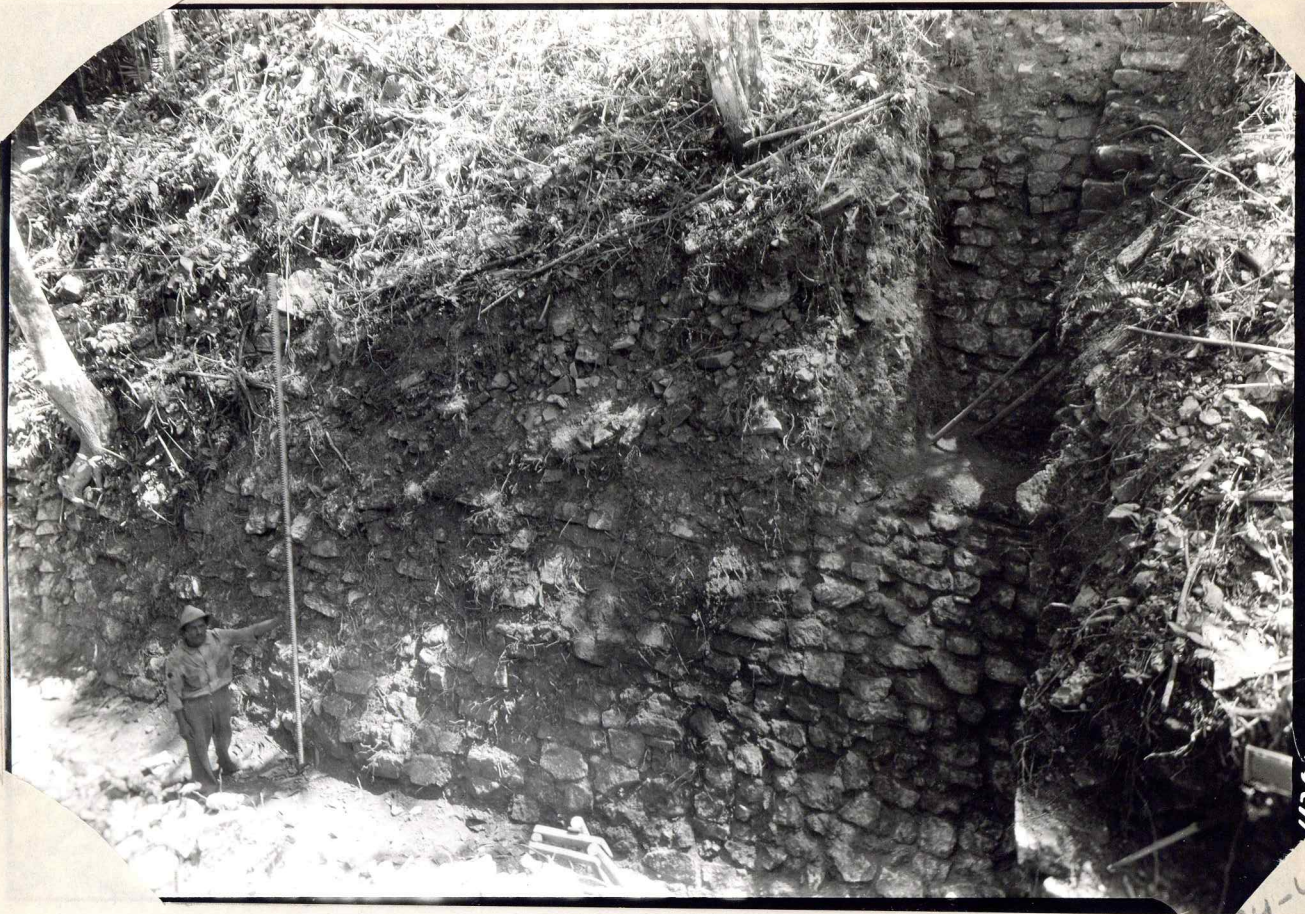
424-a 5'

34-424-A



39-424-b

34-424-B



— АЗІЛАНІ — ПІЛІПІЕ — КОДЯК — 186

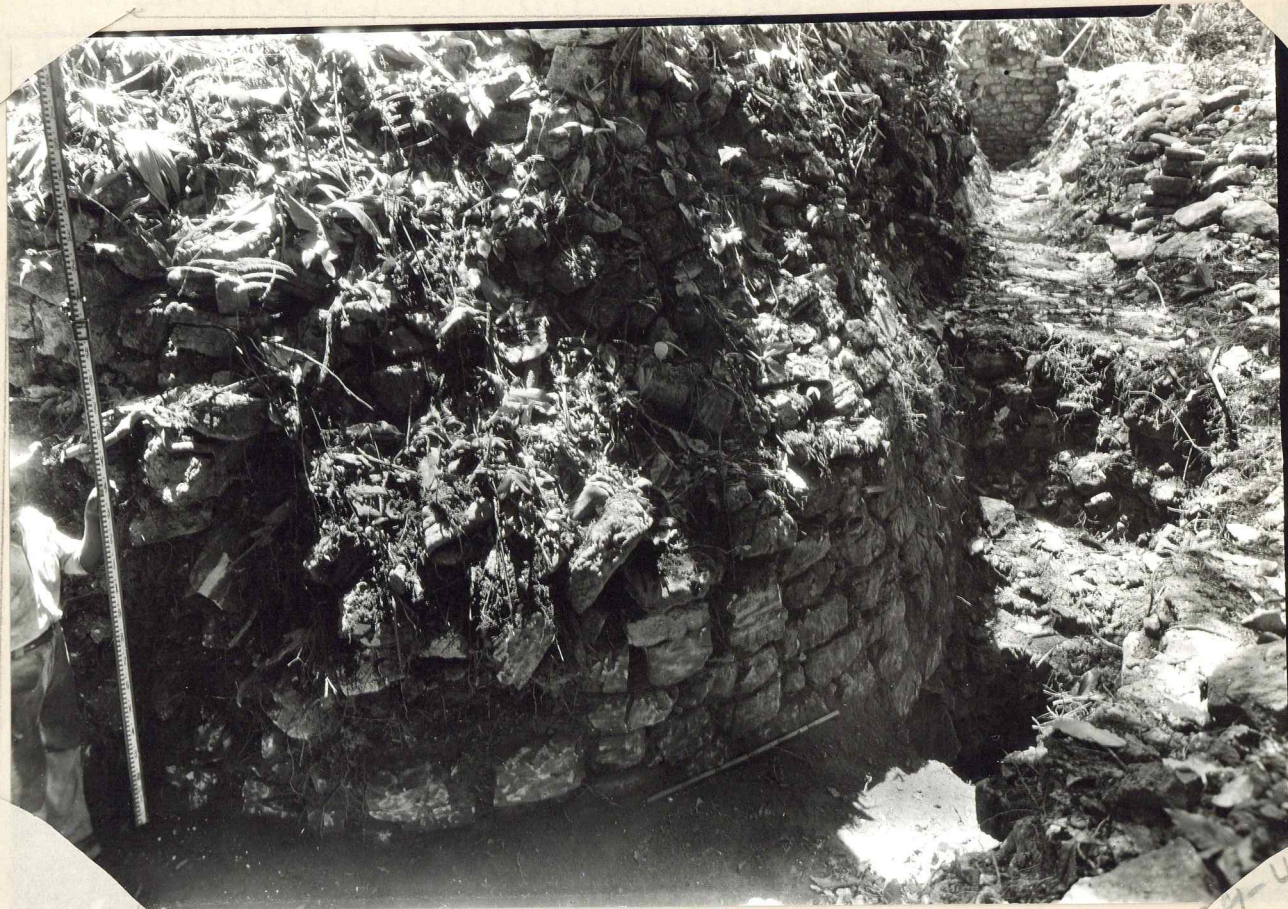
425

34-425



34-426 1

34-426



KODAK SAFETY FILM

427

39-427



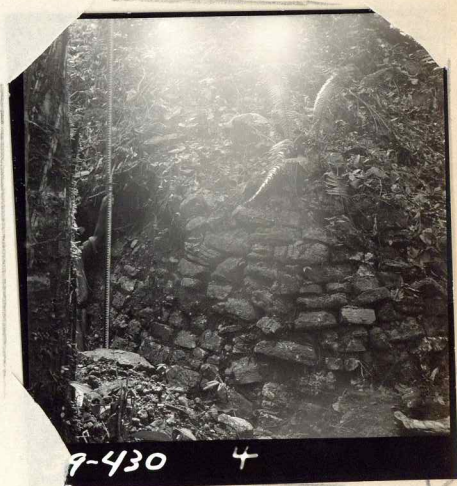
39-428 9

39-428



39-429 10

39-429



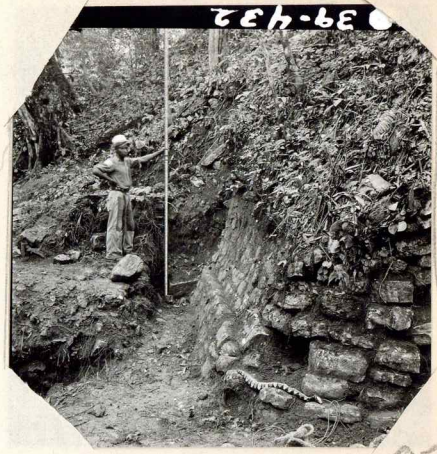
39-430 4

39-430



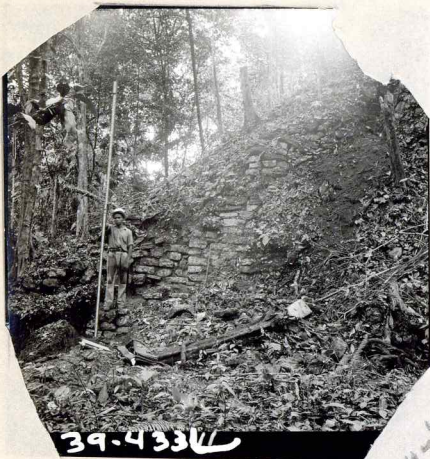
127-b
39-431

39-431



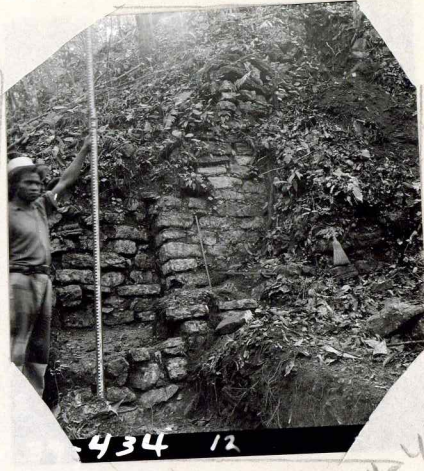
39-432

39-432



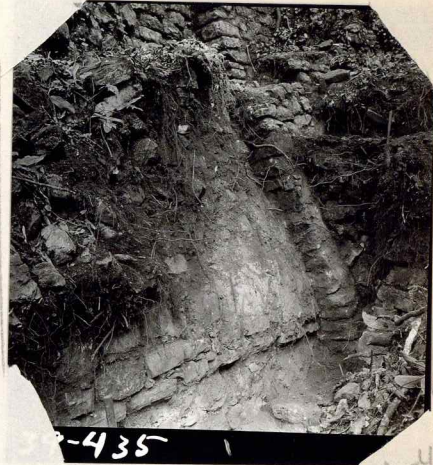
39-433

39-433



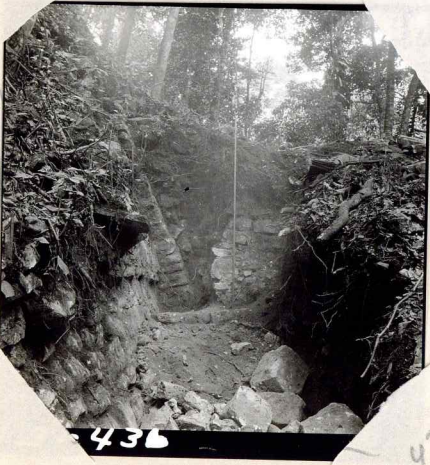
434 12

39-434



39-435

39-435



436

39-436



39-437 (39-437)

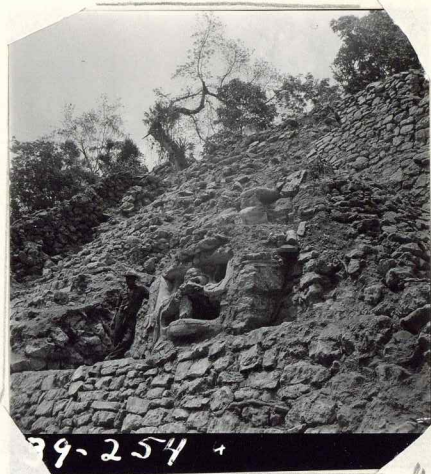
39-437

40

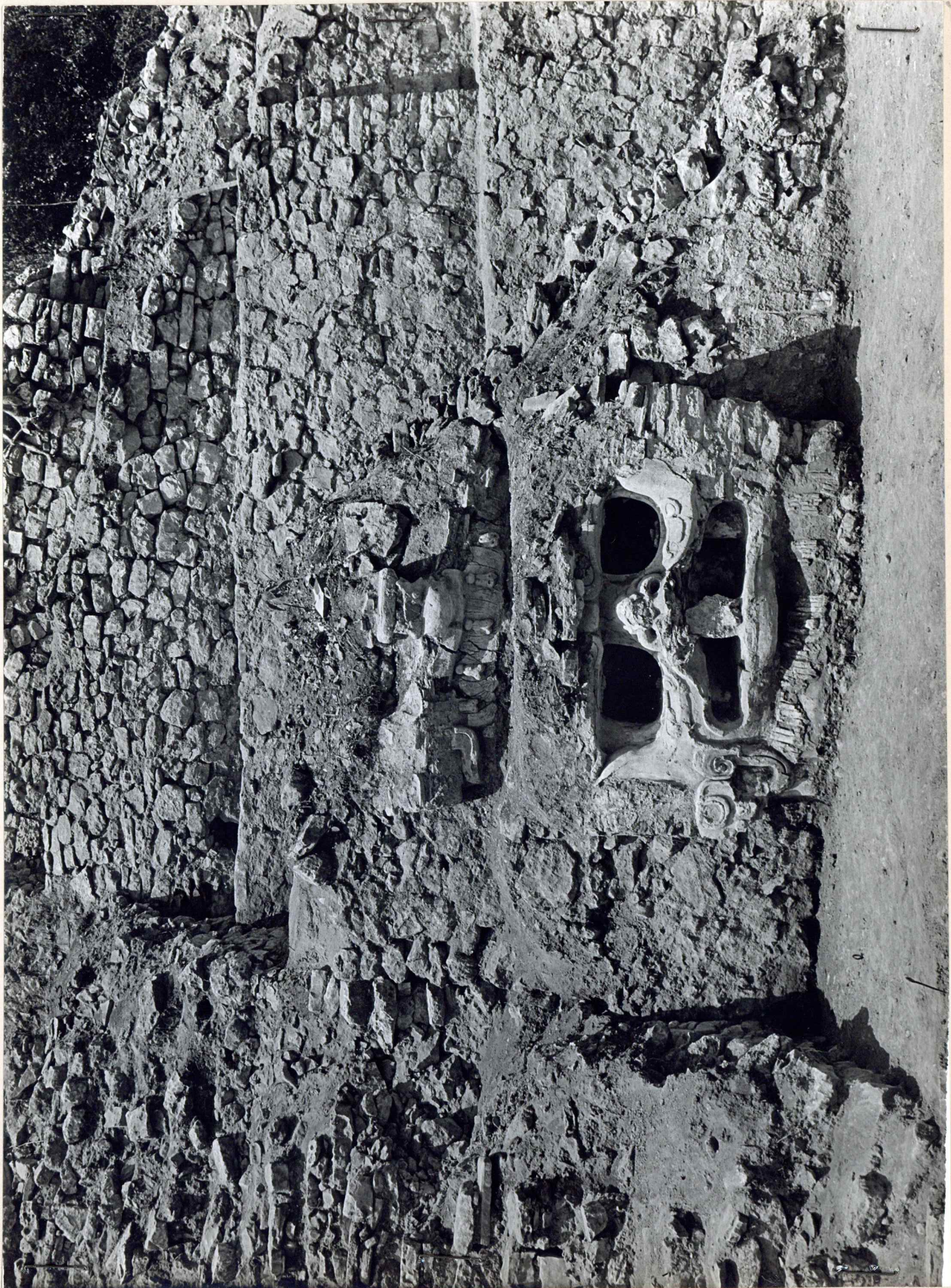


39-438

34-438



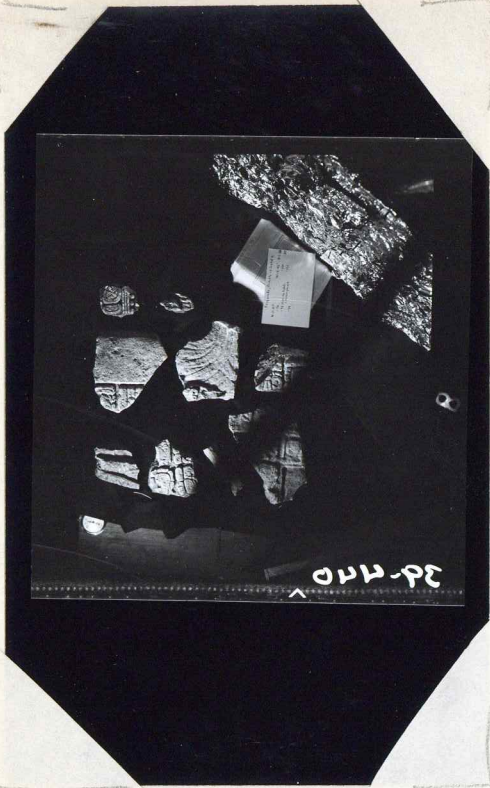
34-254



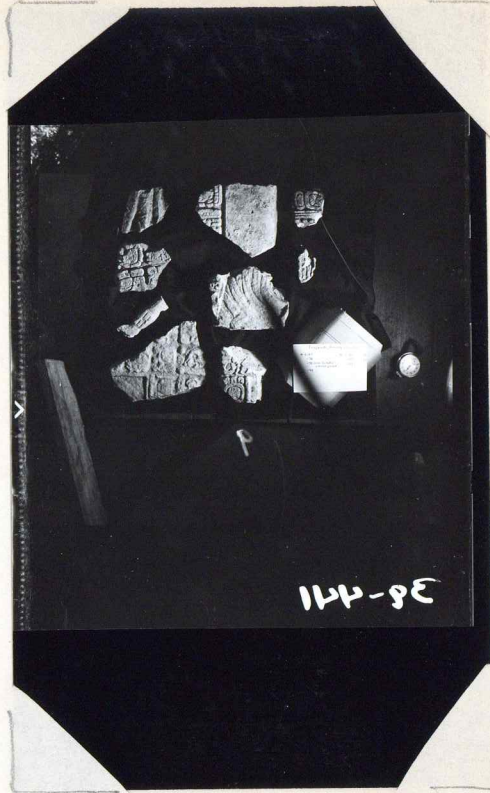
31-25c

43



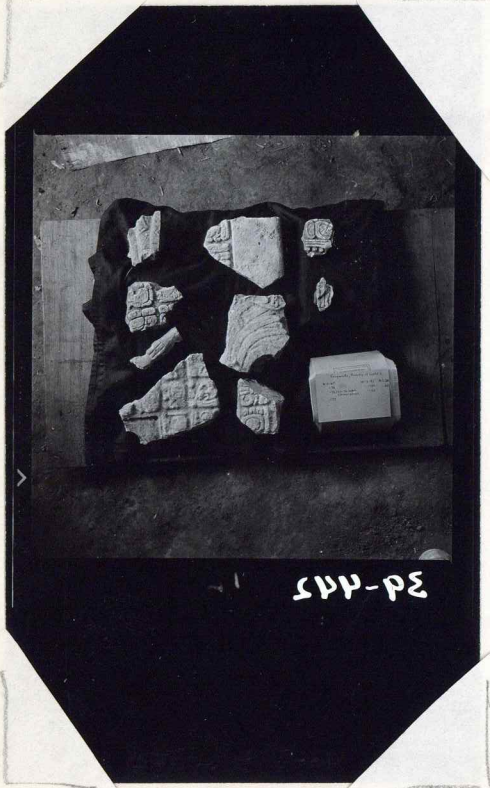


39-440



39-441

Frogs. of Lintel 7.

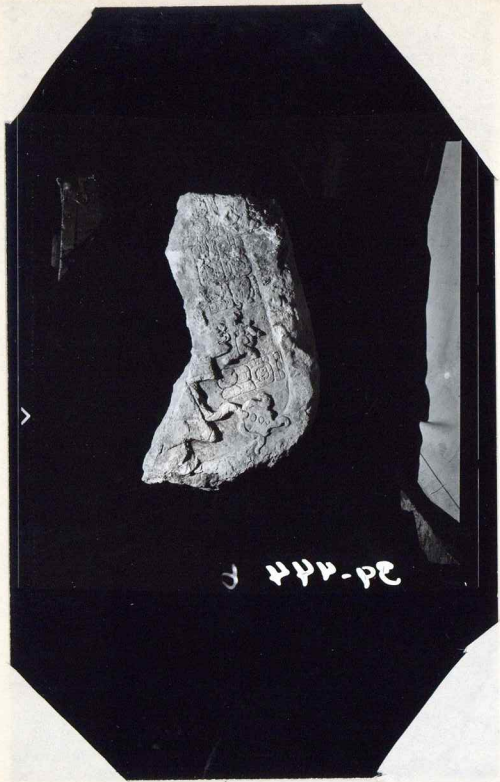


39-442



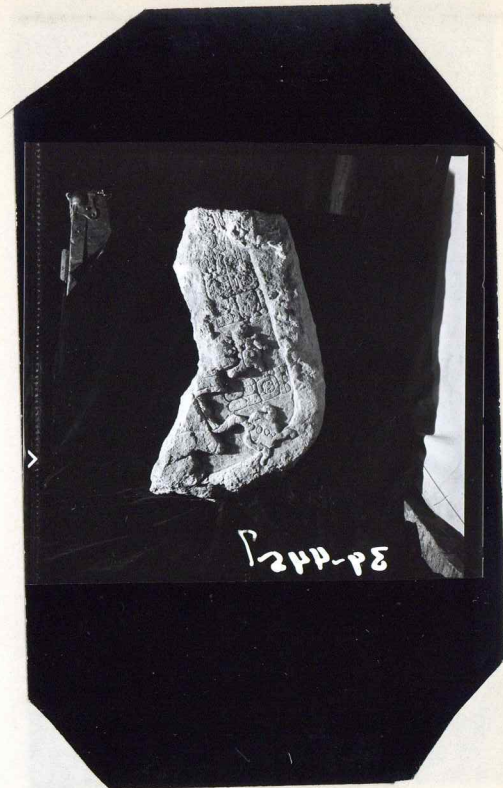
Part of MS. 16

39-443



3 444-PE

39-444



P244-PE

39-445

Part of M.S.S. 16

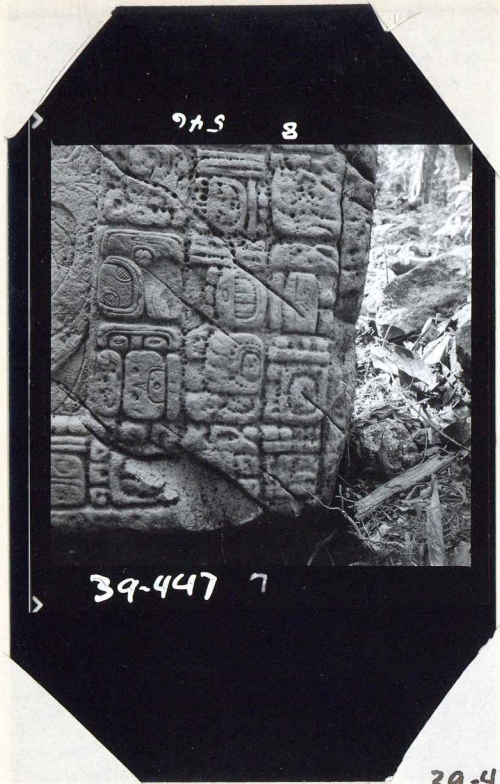


344-PE

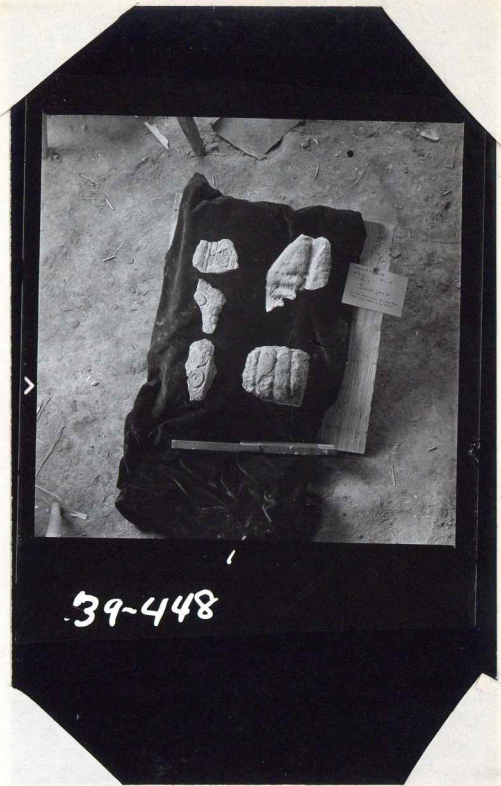
545

39-446

Stela 1, glyph 2



39-447
Stela 1



39-448
Frgs.

39-449

stela 3, bottom 1/2.

39-450

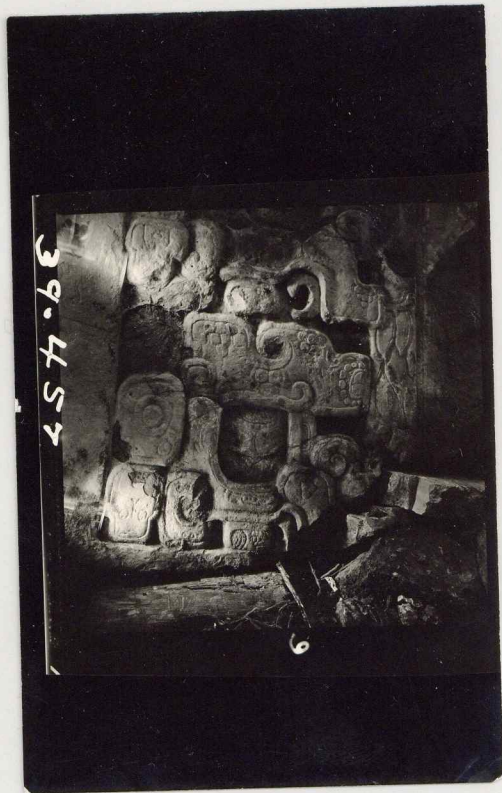
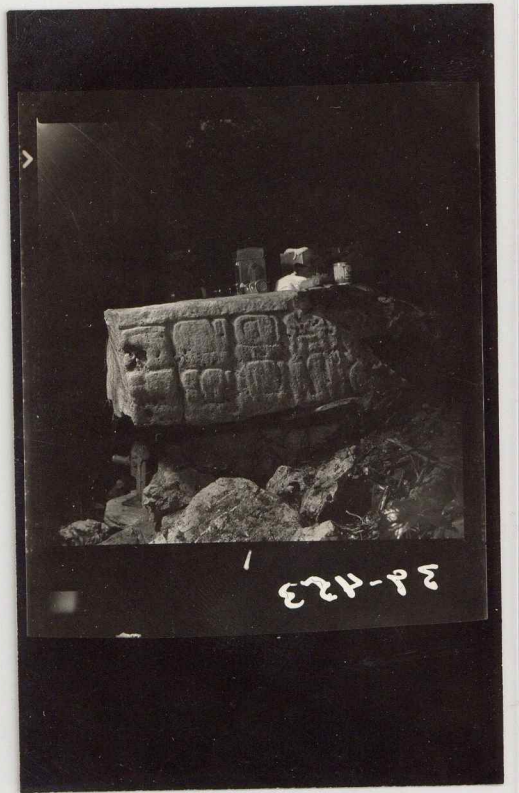
39-451

Stela 3, bottom 1/2.

39-452

same

† 510 455. 49



37873

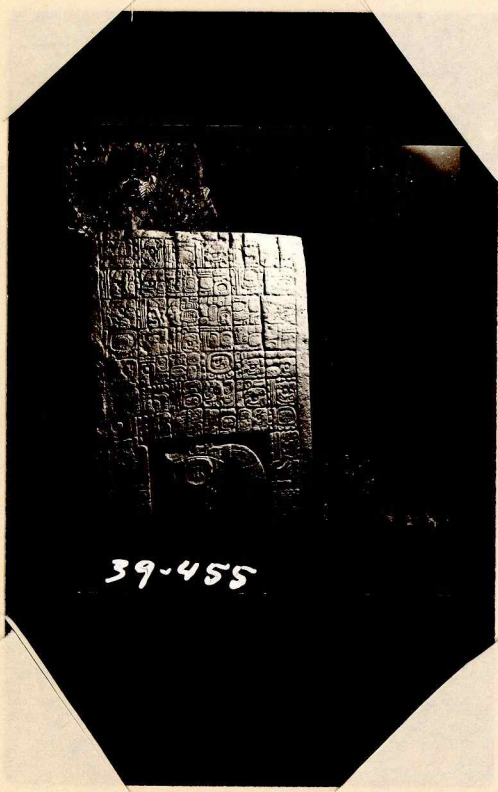
37872

37876

39-453

Stela 5, lower piece

39-454
(37873)



39-455

39-455

Stela 3

39-457

Stela 5, lower piece.

39-456 - ~~false missing?~~ was under exposed, some subject as 457e with hier.



39-459 10



39-458 9

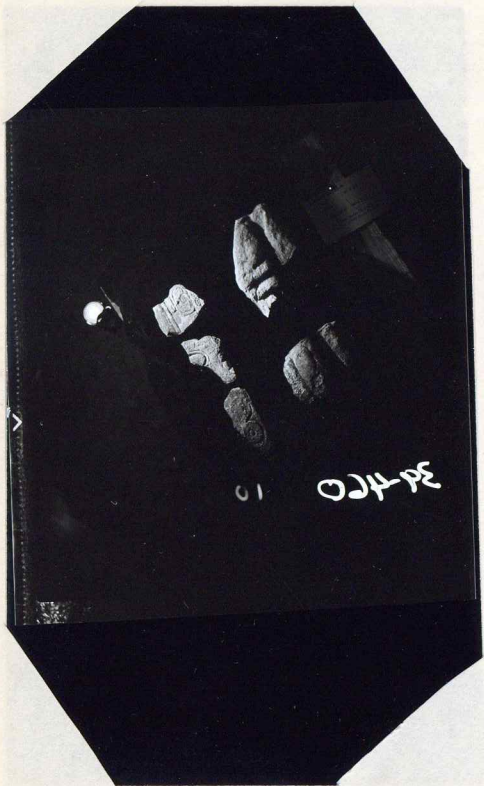
37872

37877

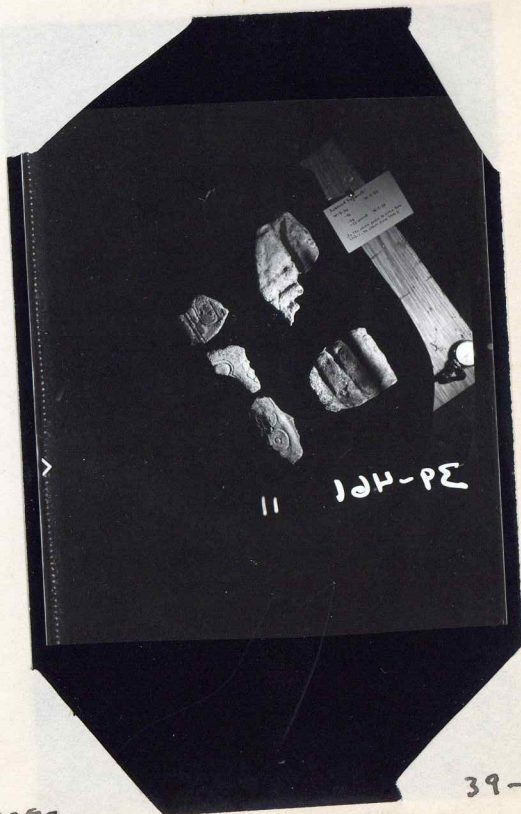
39-458

39-459

Stela 5, lower piece



39-460



39-461

39-460

39-461

Scw. Frags.
from Stelae 1 and 5. (See Cat.)

2 shells skid 8 - Channing



34-424



34-428



Stage 2, lower piece



34-430



Top stage 1 and 2 (2)



39-462

39-462

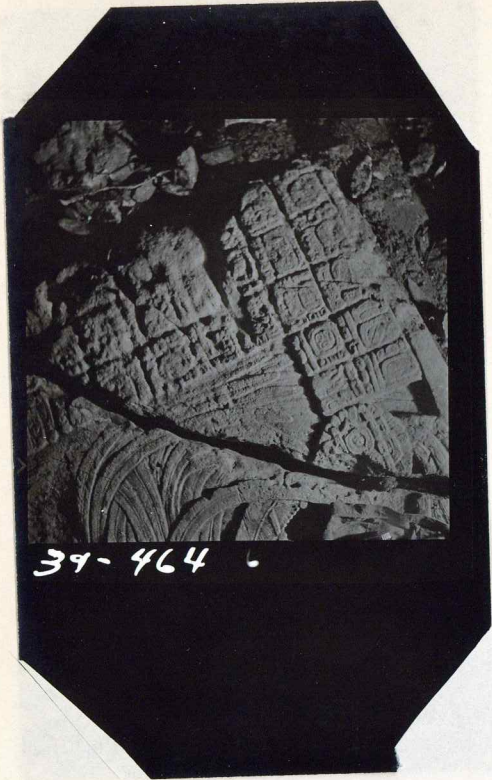
Stela 8,
Top Front.



39-463

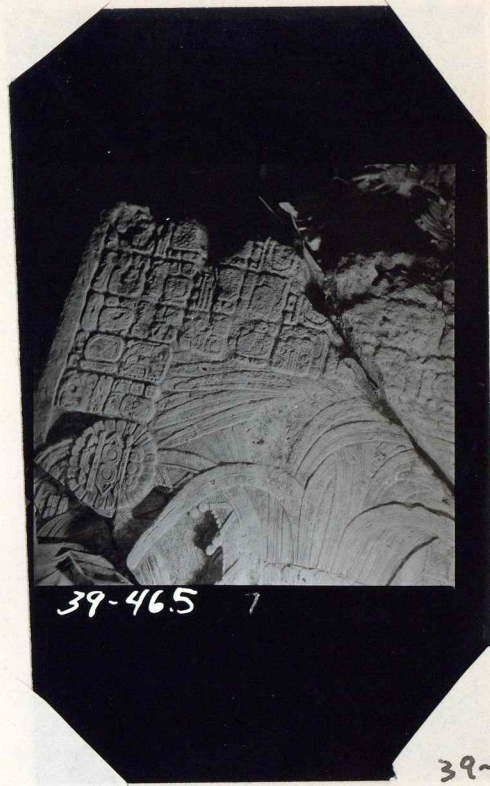
39-463

Stela 8
Top Mount.



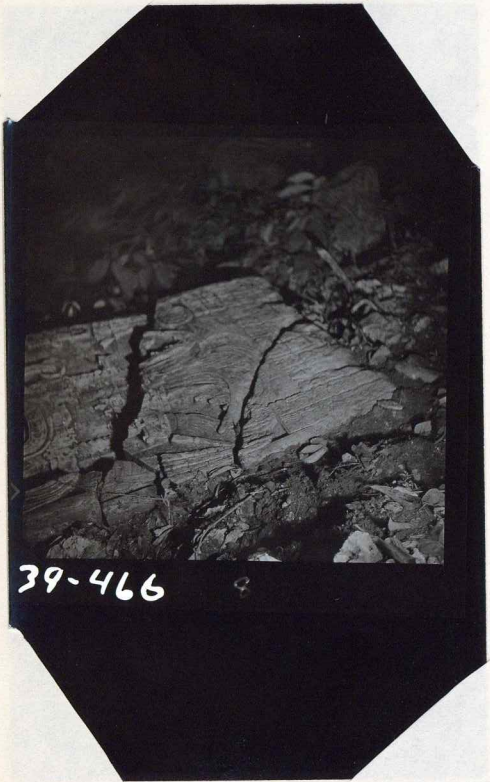
39-464

39-464



39-465

39-465



39-466

39-466



39-467

39-467