



37-299

СТАВРИ—НИЛВАЛЕ—ГОДНА

37-299

299



37-300

37-300

300



37-300



37-31

37-201

301



37-302

37-201

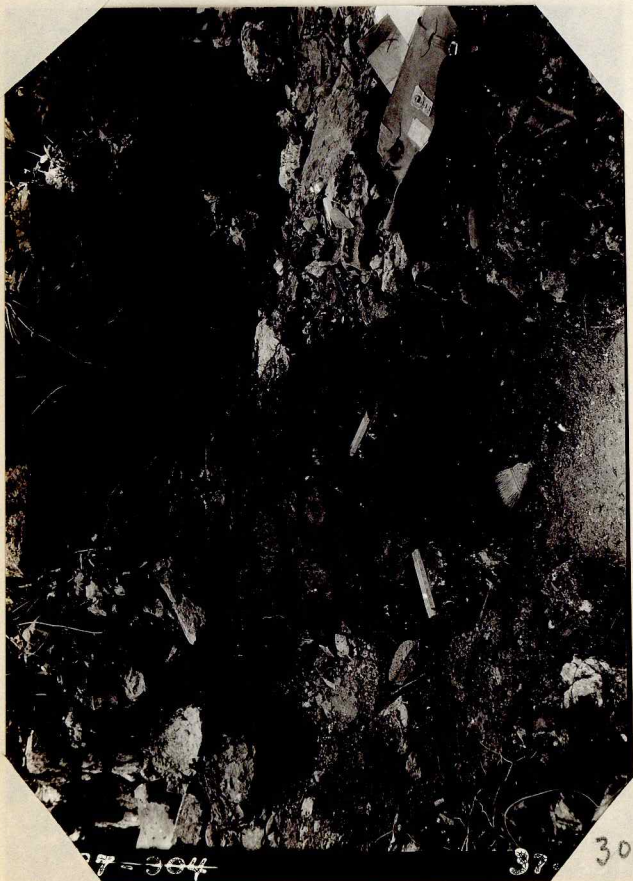
302



37

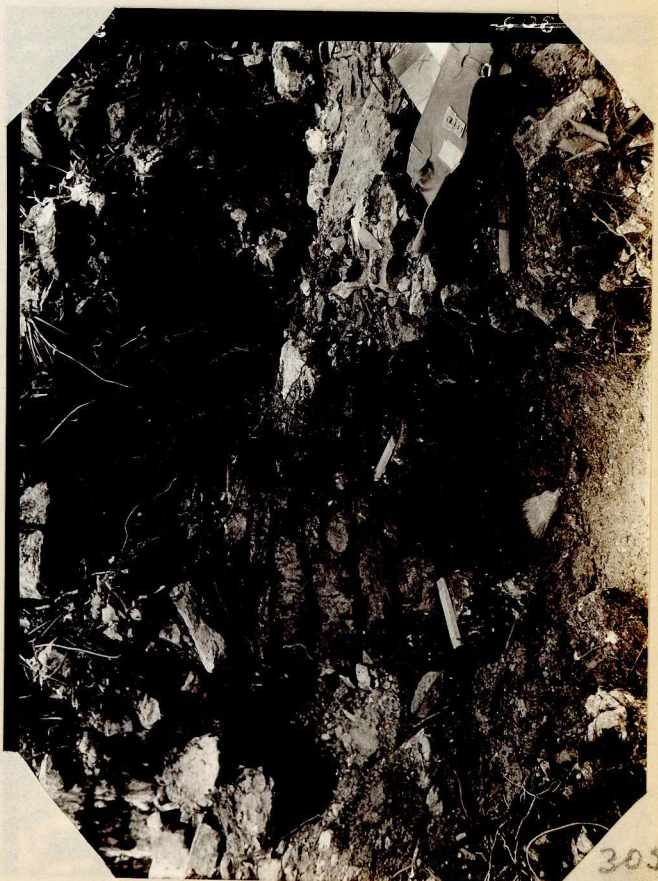
27-269

303

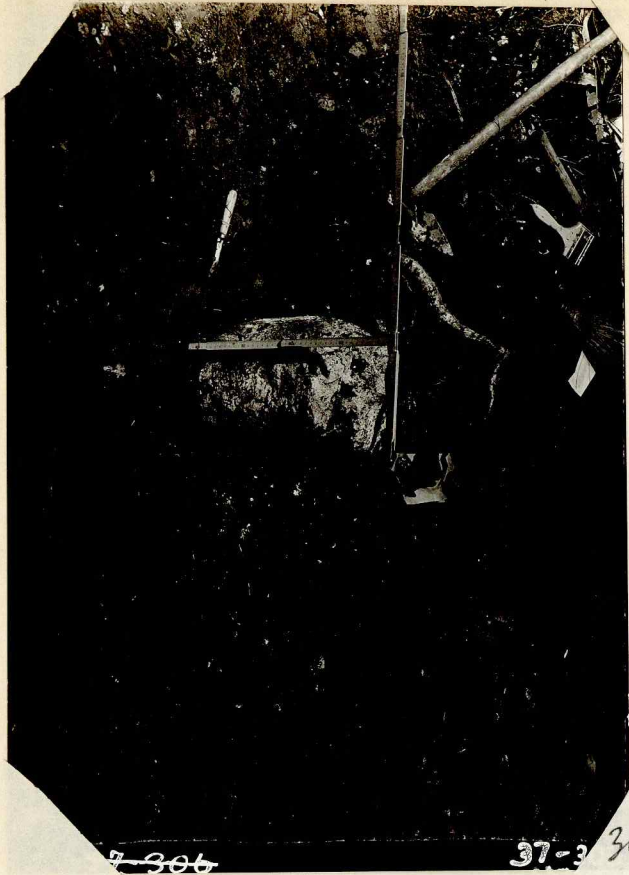


27-304

304



305



306

37-3 306



37

37-307

307



37

308

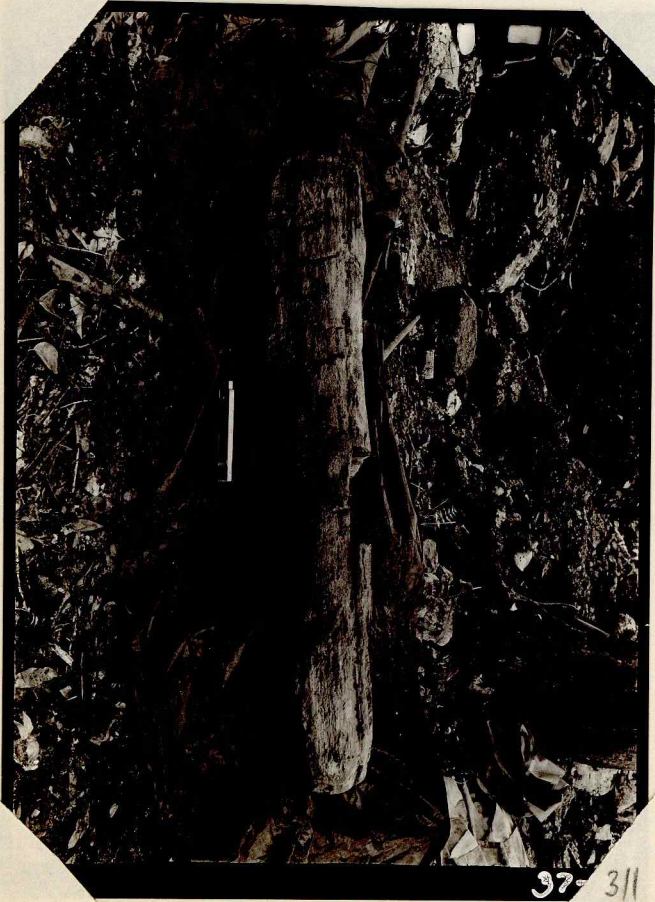


309

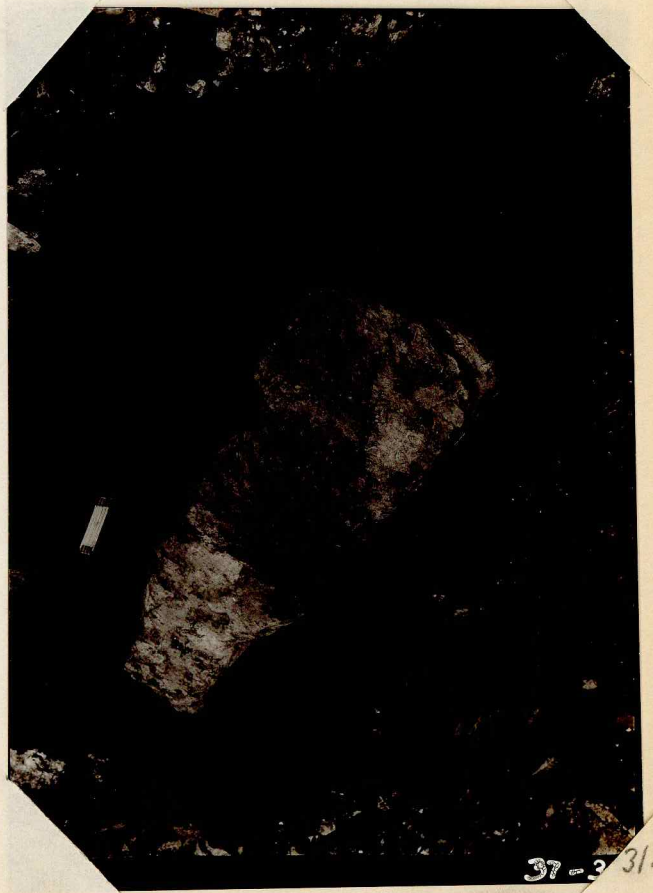


37

310



37-311



37-312



37-3

313



37-31

314

R-10



37-314



37-315

STATION - NAME

315



316



37-316



STANLEY MILBY LE - 317

317



STANLEY MILBY LE - 318

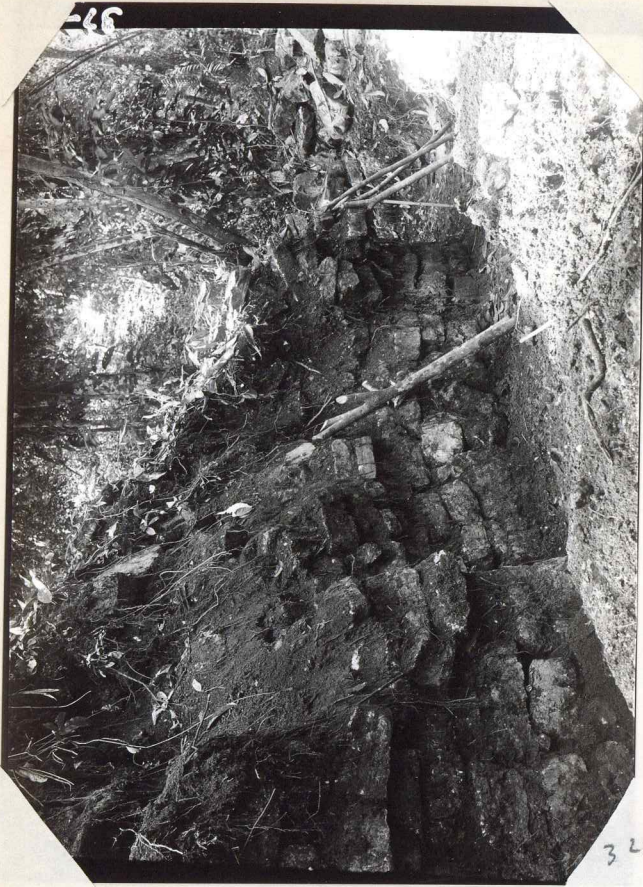
318



319



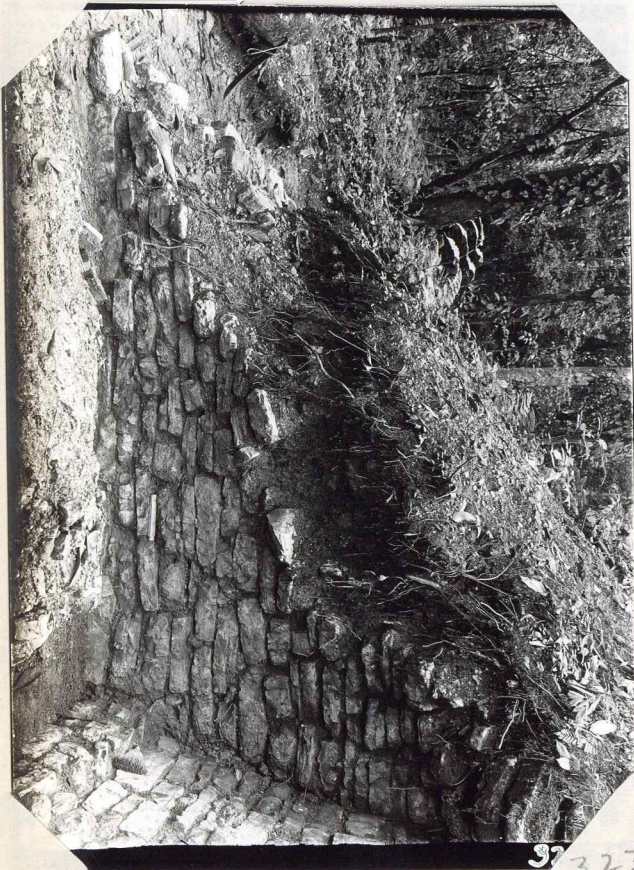
320



321



37 322



37 323



37- 324



325



326



327

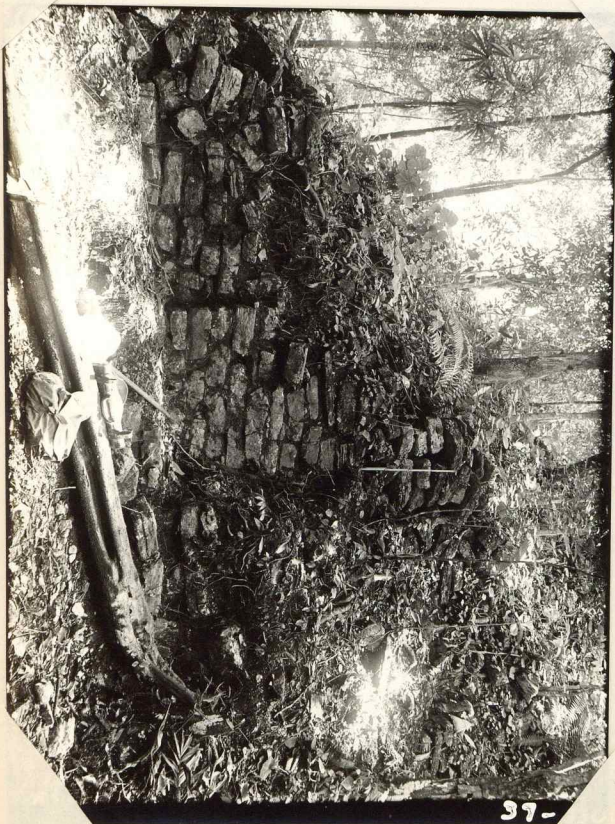


328



37-

329



37-

330



37-231

R-16



332  
37-332  
(str R-16)



333  
37-333  
str S-5



334  
37-334  
str. S-5



37-

335

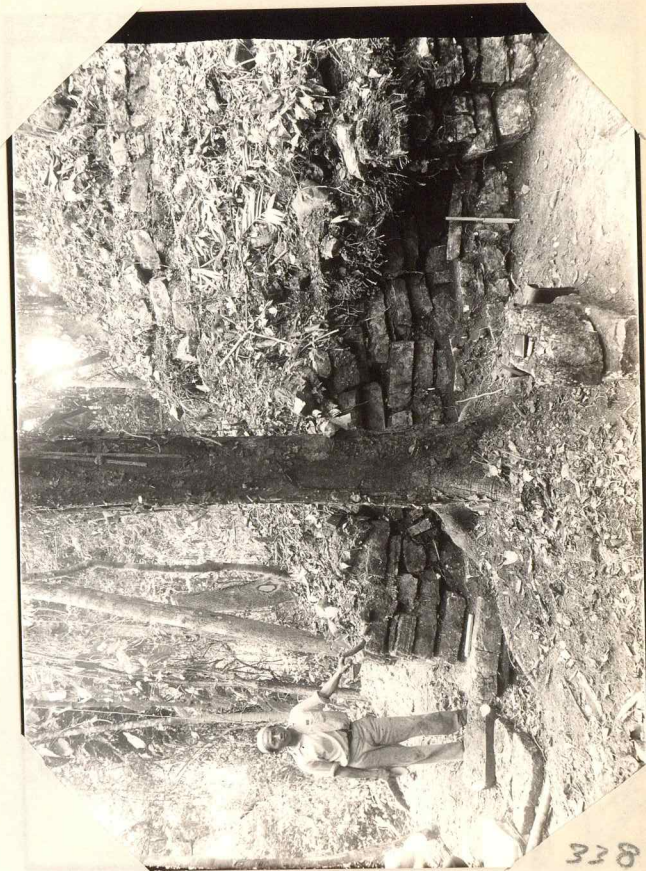


37-

336



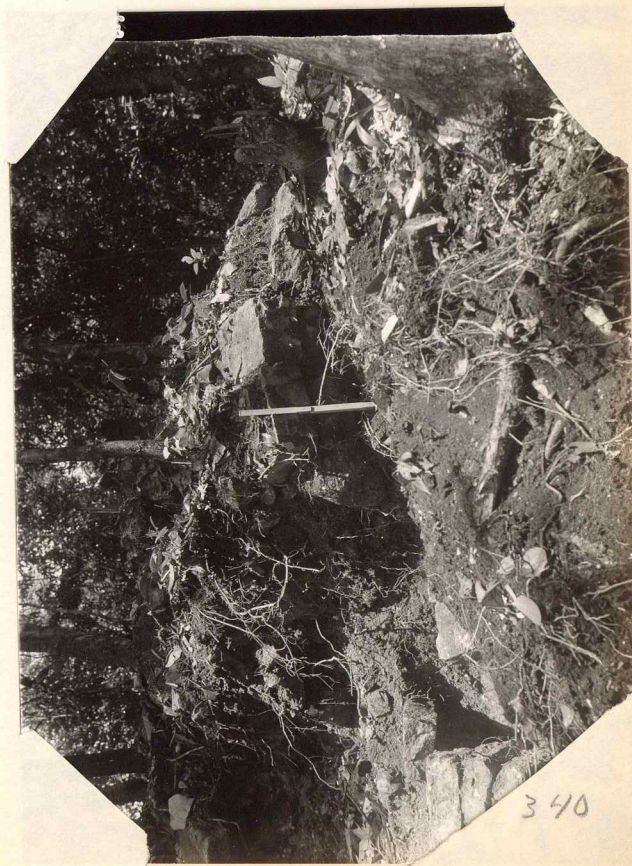
337



338



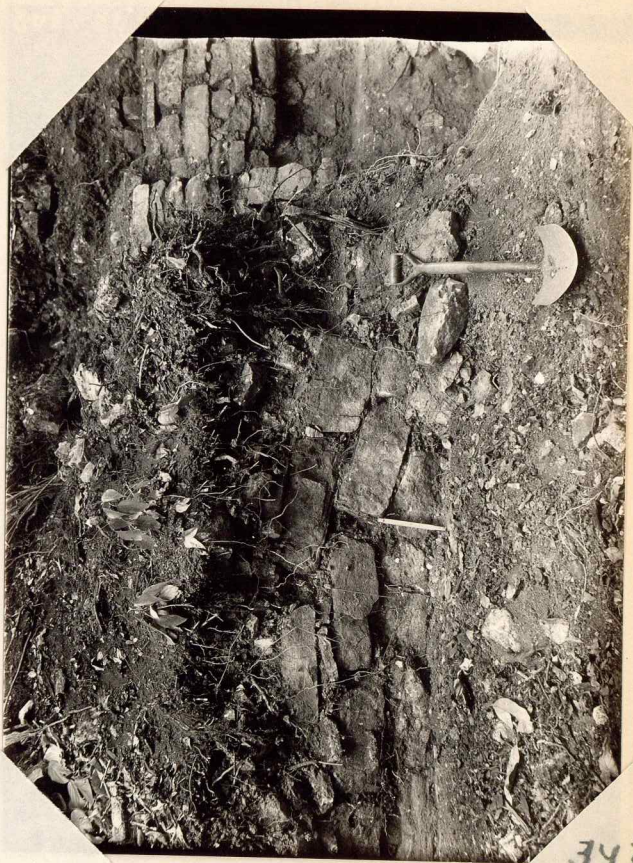
339



340



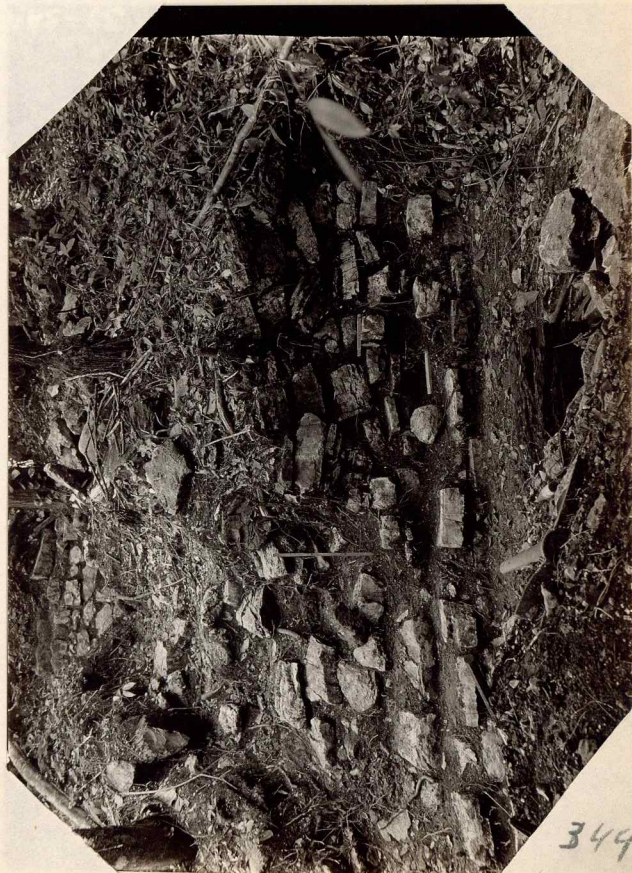
341



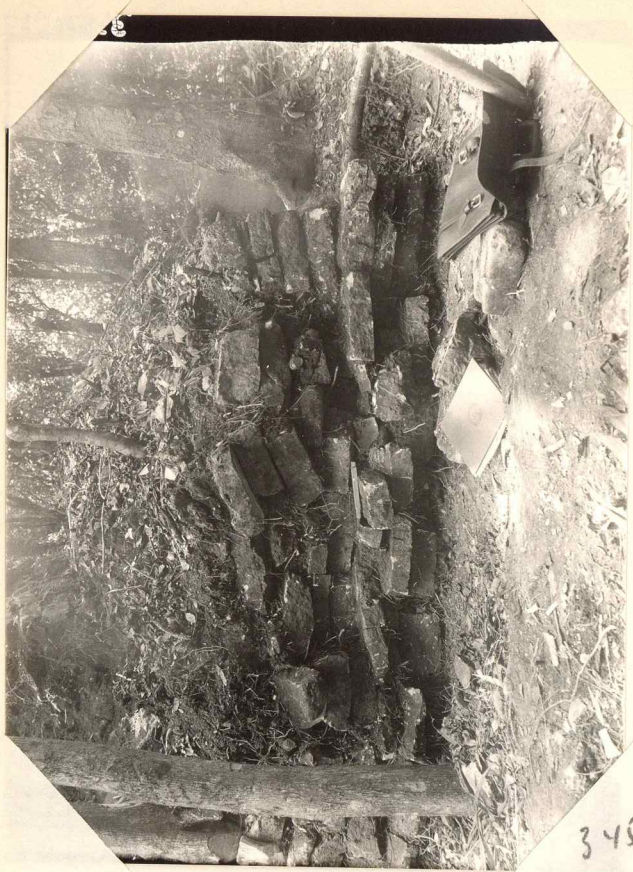
342



343



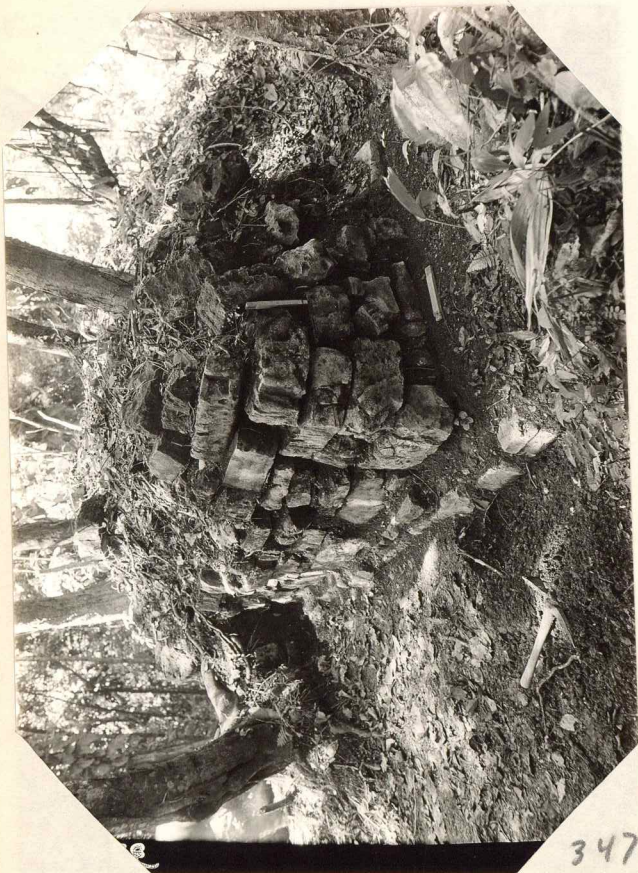
344



345



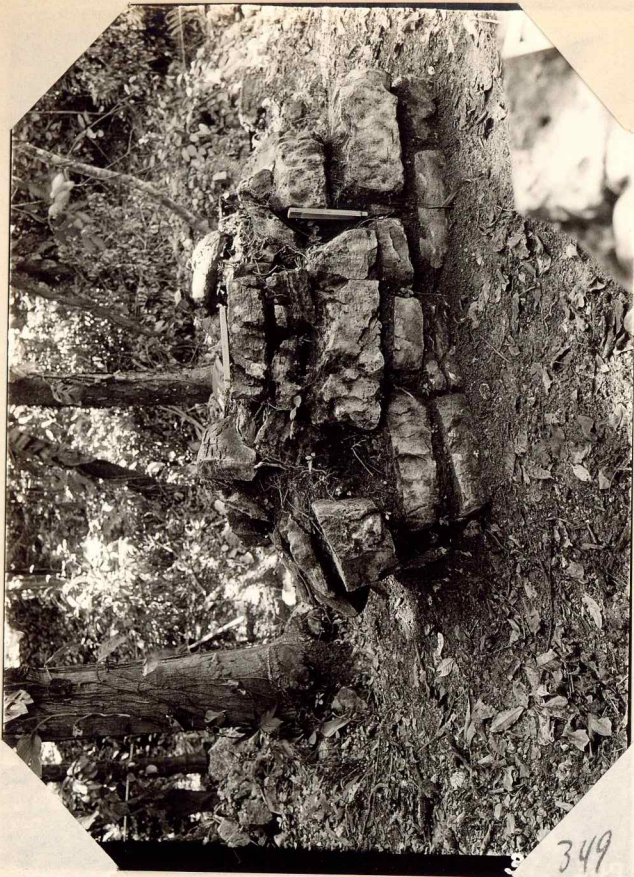
346



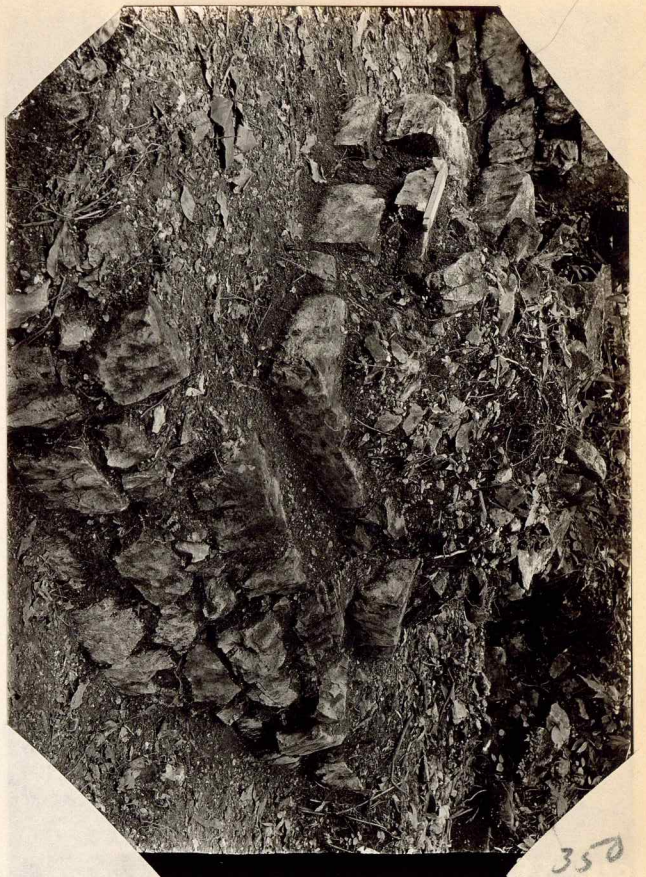
347



348



349



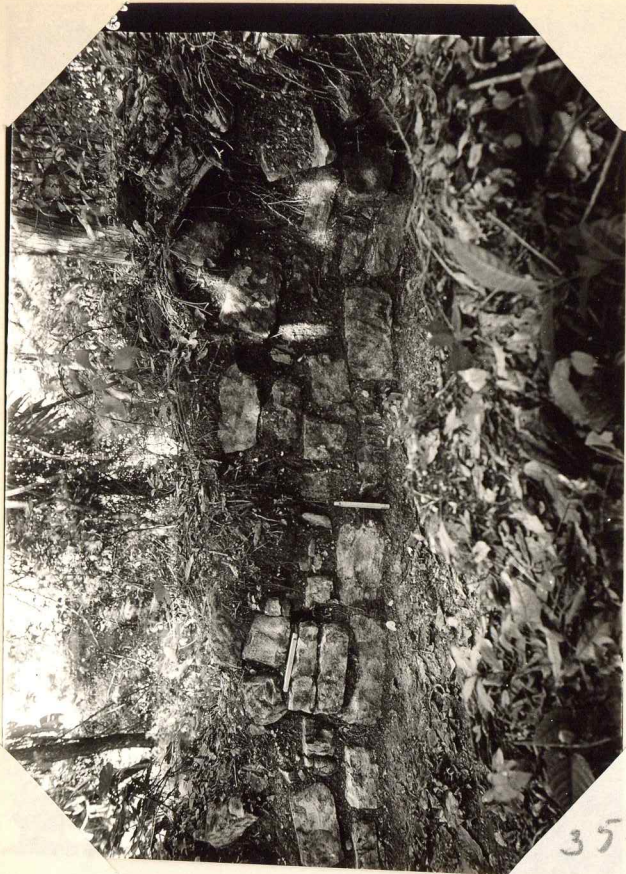
350



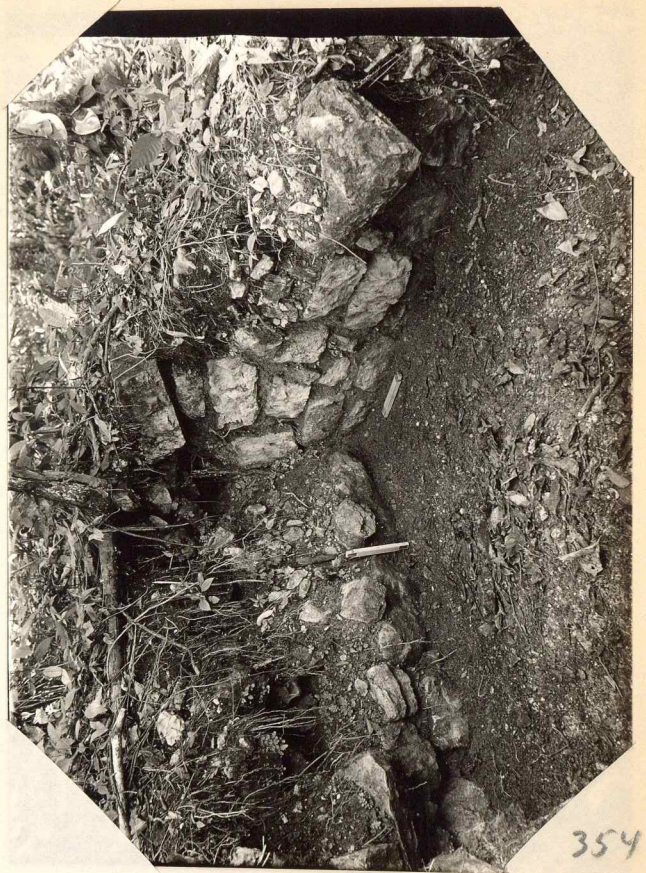
351



352



353



354



355



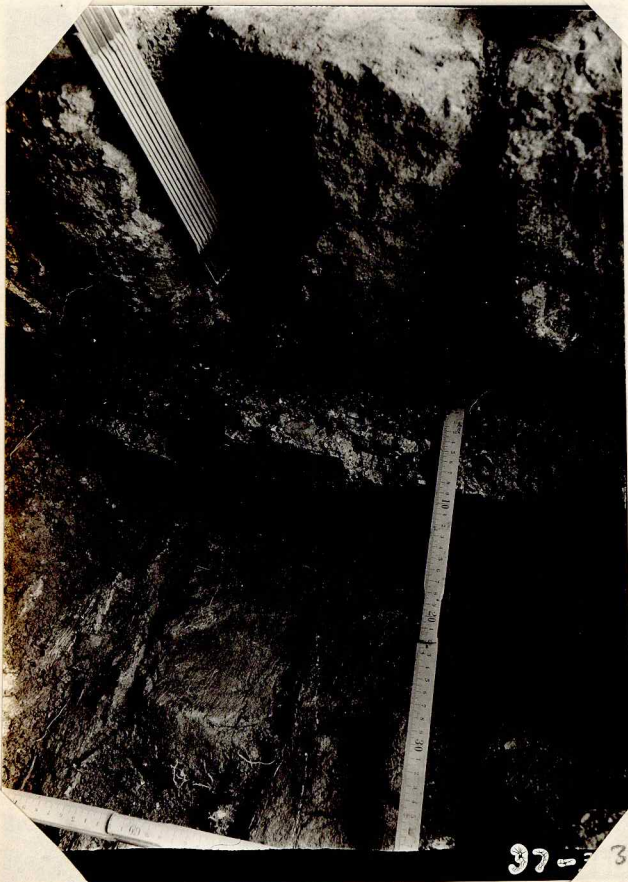
356



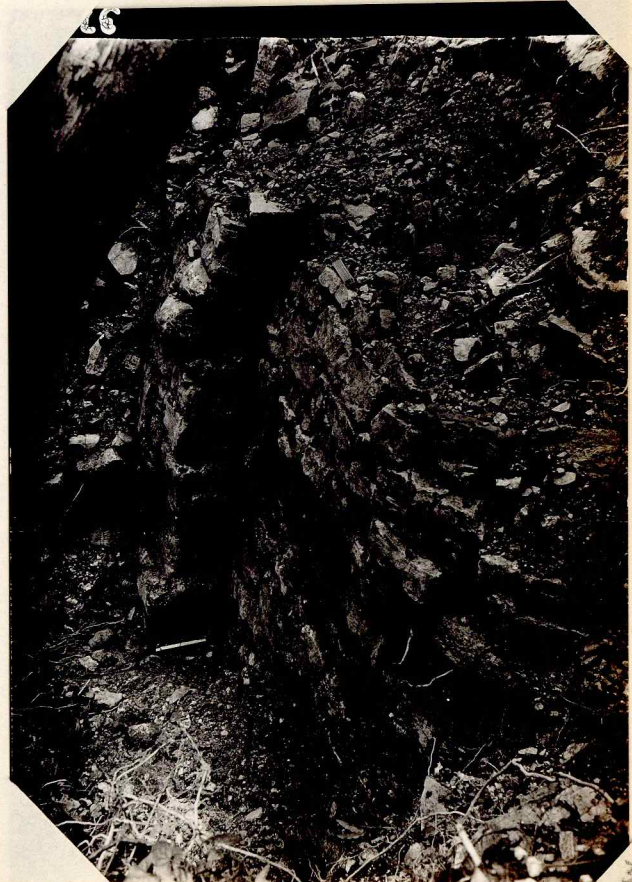
37-355



357



358



359

Stela  
stucco



360



361

—NITRATE—

—NITRATE—

S-17-21  
Lot 6  
Lot 7

S-17-21  
Lot 6 Lot 7  
Lot 8 Lot 9

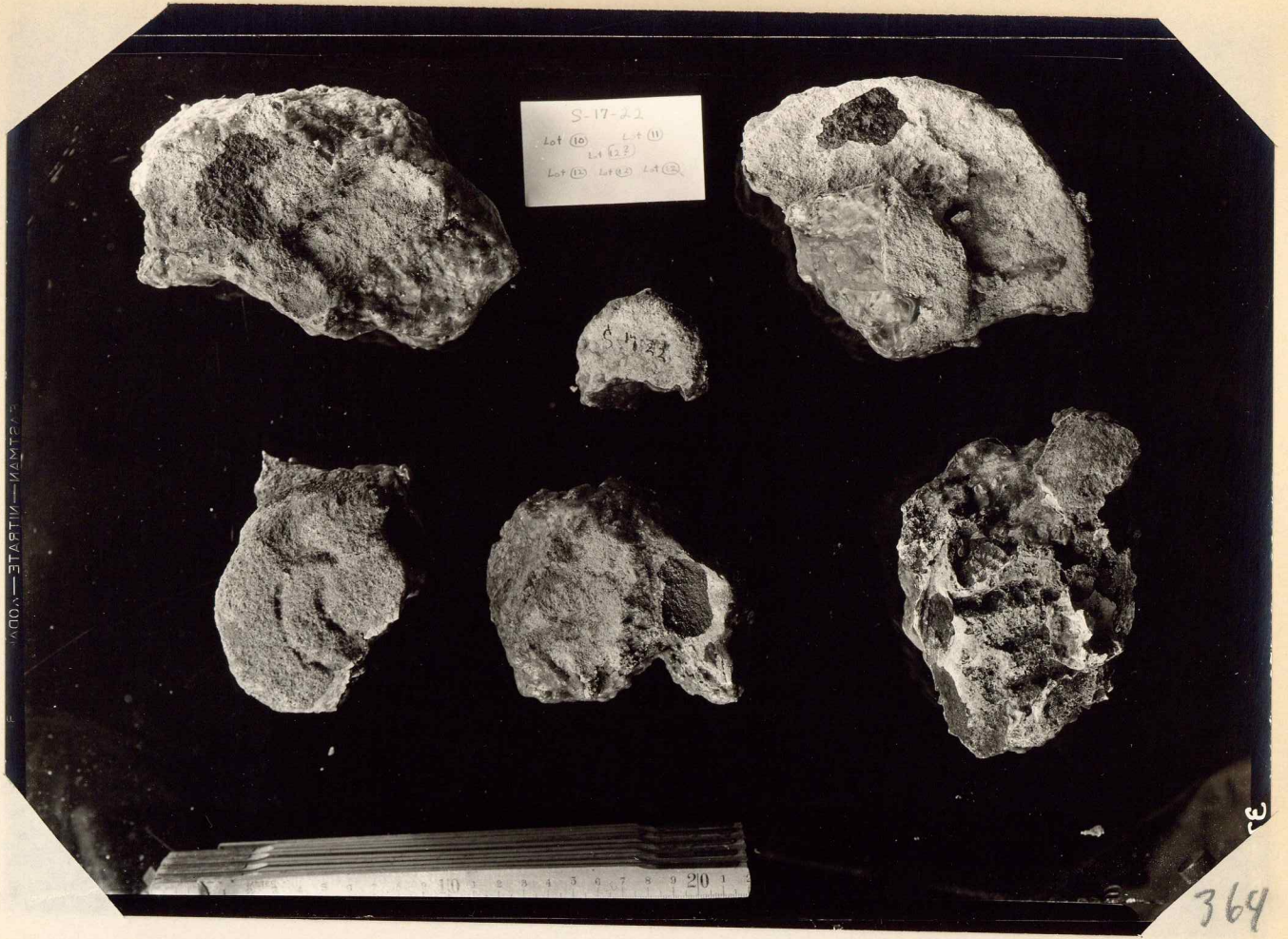


362

363

ГОЛОУ—ТАРТИУ—ИММТРА

3





366



367



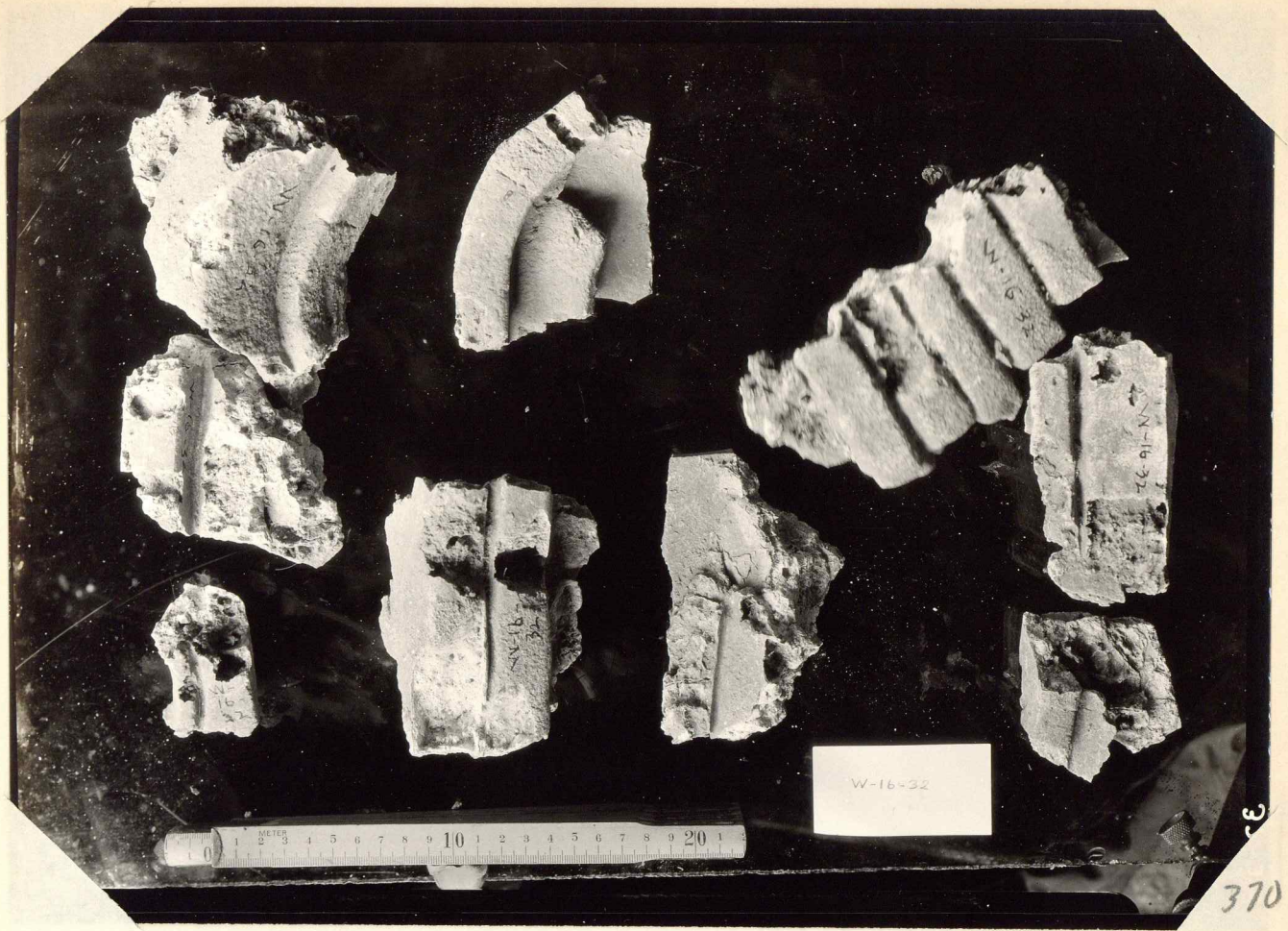
НАДОН—СТАПТИН—НАМТРА

368



S-17-II S-17-10 S-510 S-512  
S-16-3 S-16-7 S-16-II S-16-11

369



370



371

371



372



373

Figs.



374



375

W-8-174 x SE-13-2



376

W-8-174 + SE-15-2  
2-51-35A H-8-M



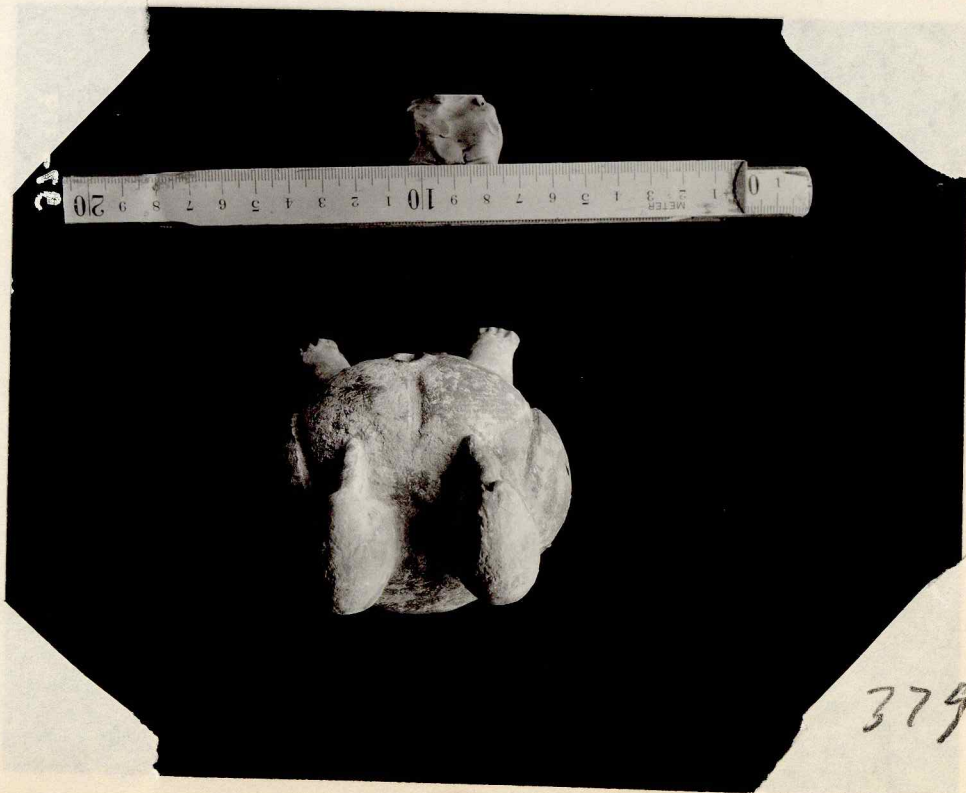
377

Film missing.

Another view of W-8-174

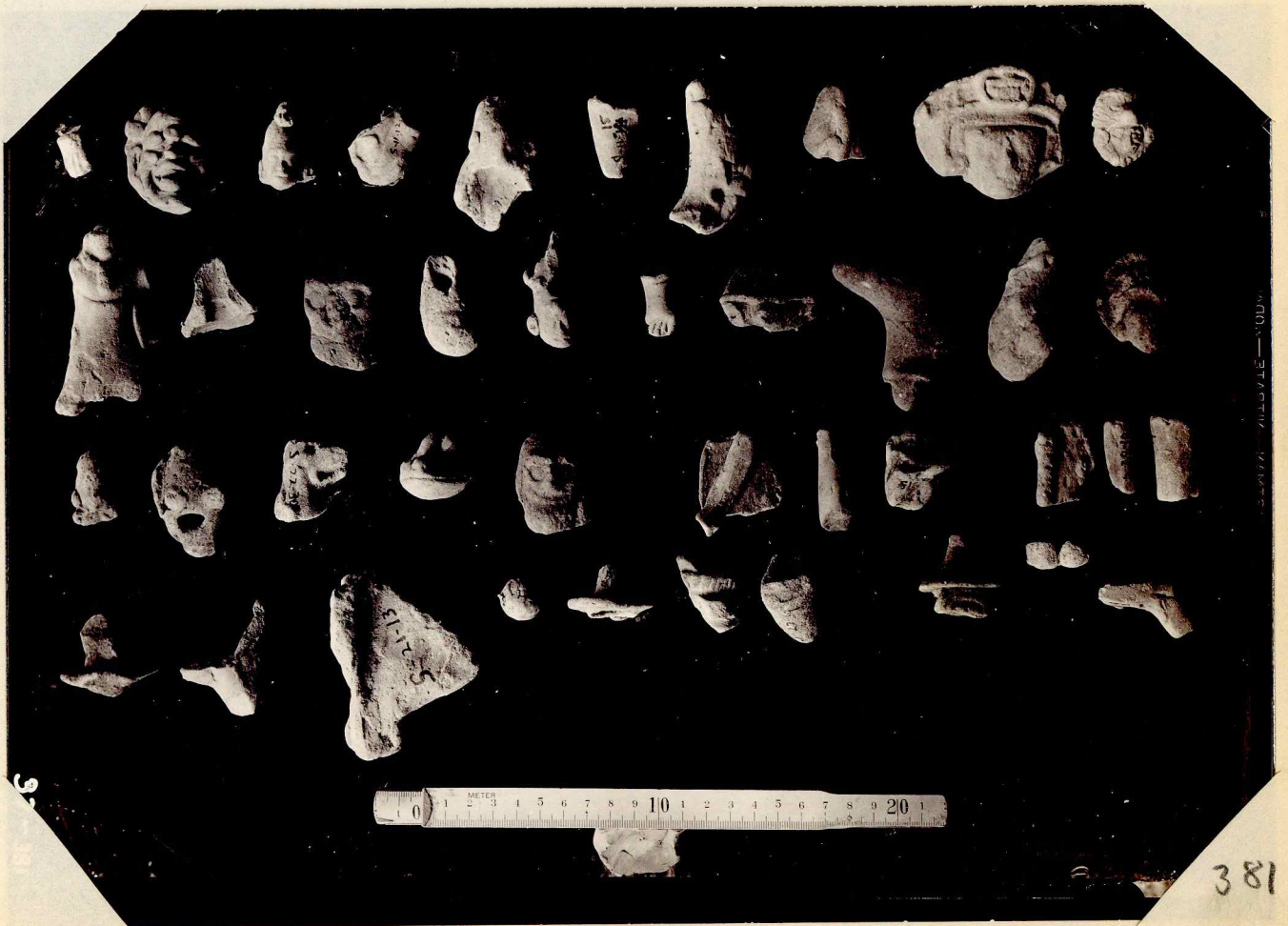
2

378



379

W-8-174





382

"Protist" stone (no photo)  
 Film missing (observed  
 in field).

~~See 285~~

See 37-71

(This found in + also 71  
 assigned to 212  
 with 71 + 285)

no film 383

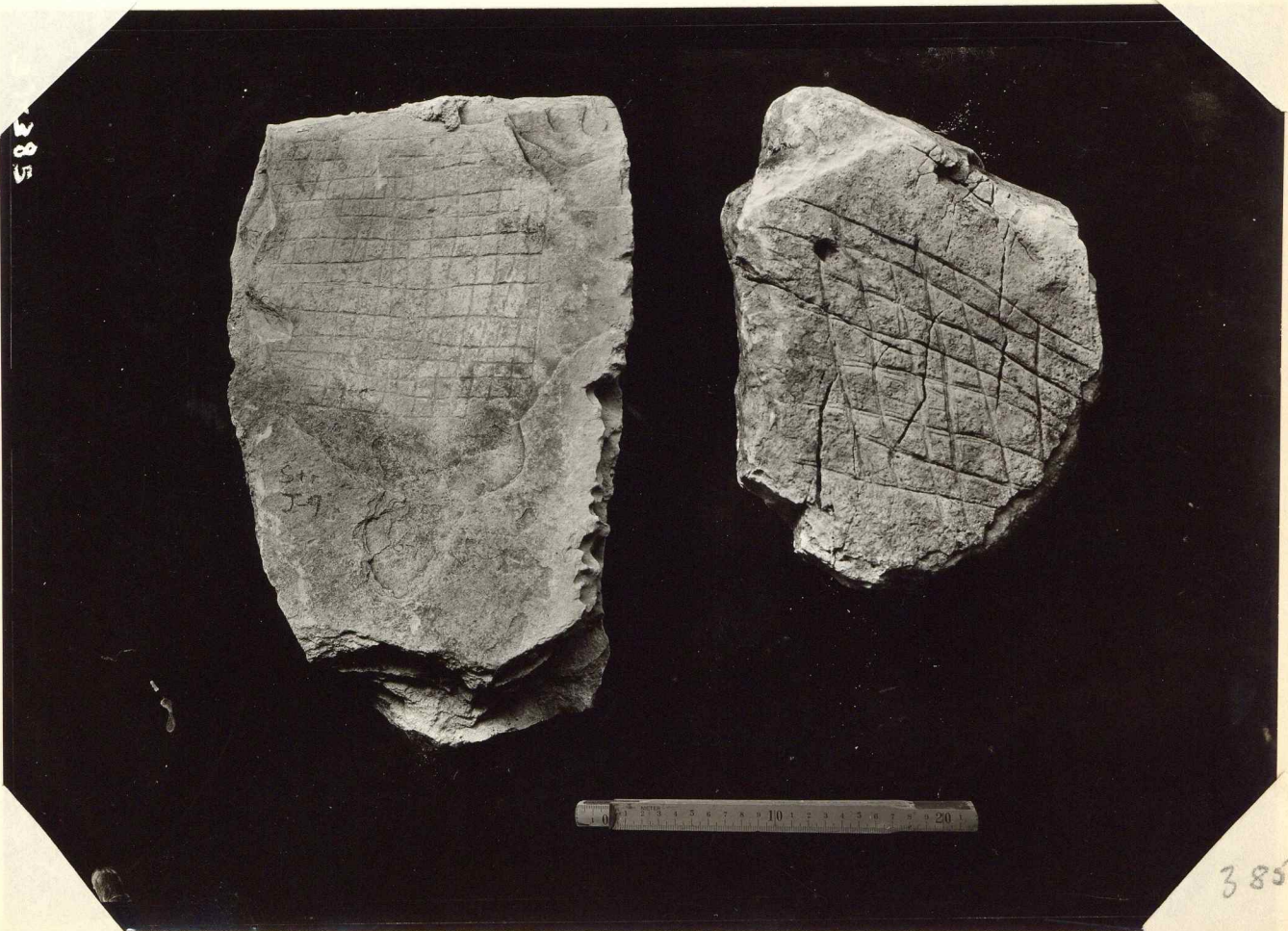
glyphs on J-9 fault stone.  
chosen in field - See 37-72.

This & mal m. assigned to  
Field No 23 twice.

Stone

no films

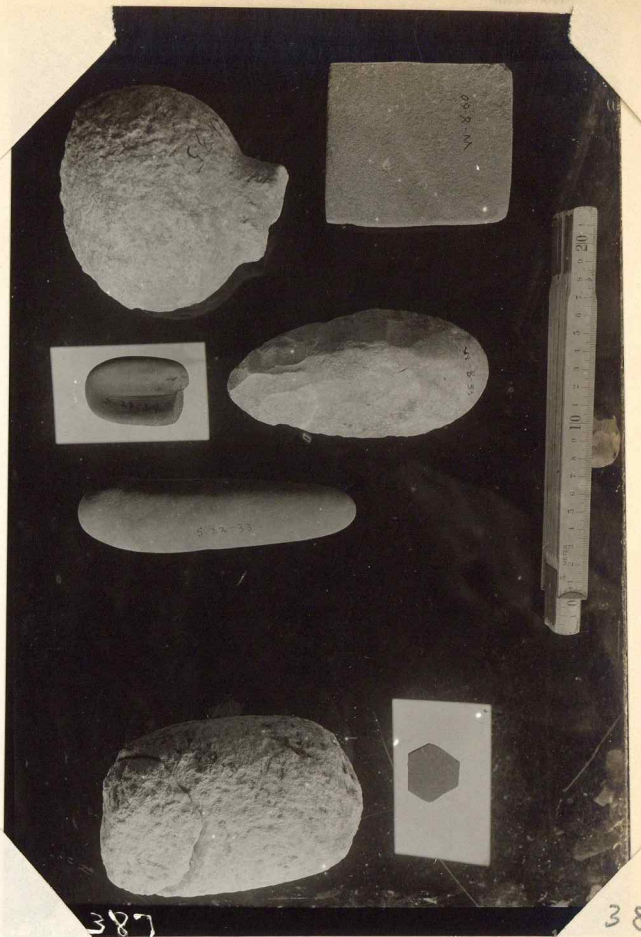
384





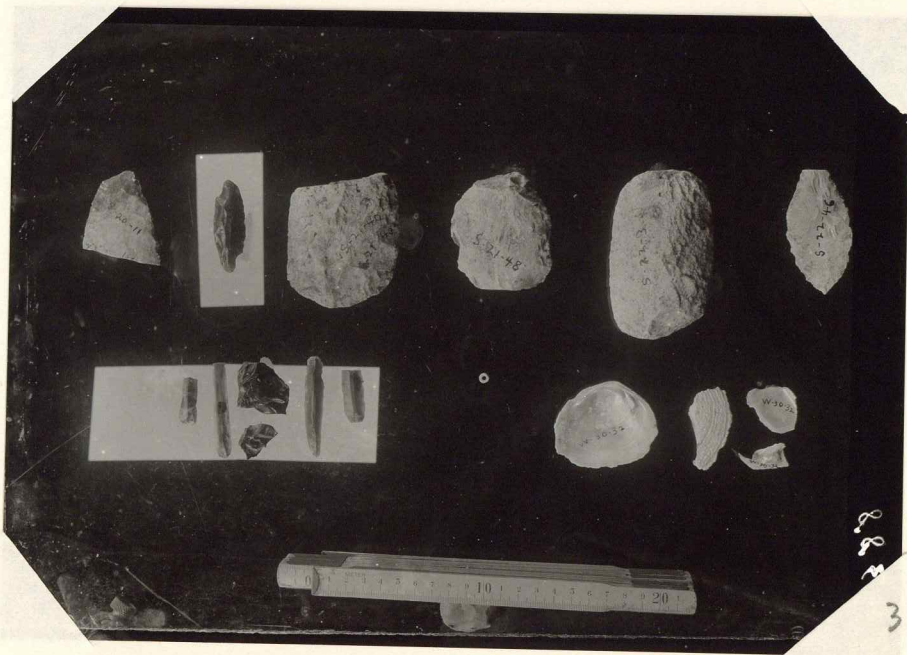
ab

386



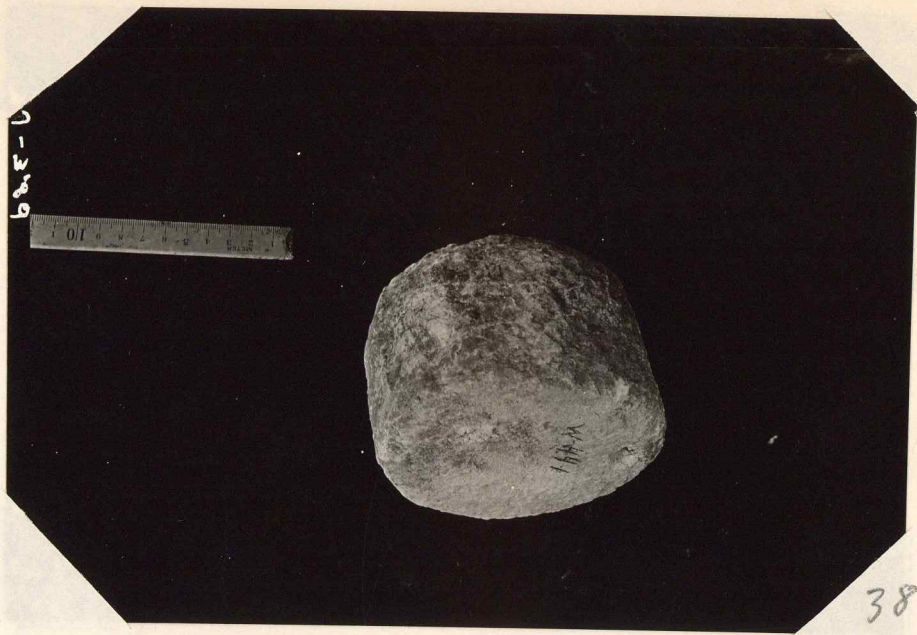
387

387



388

388



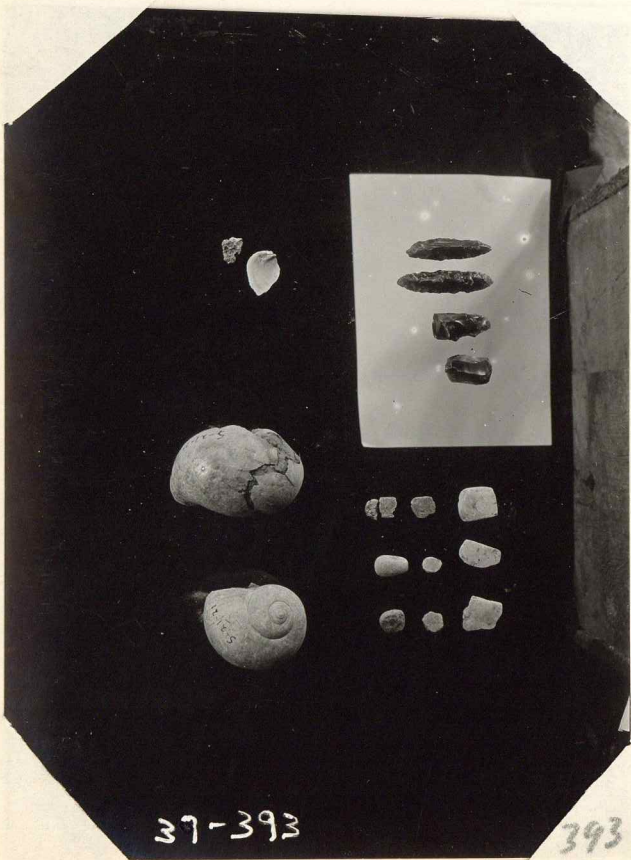
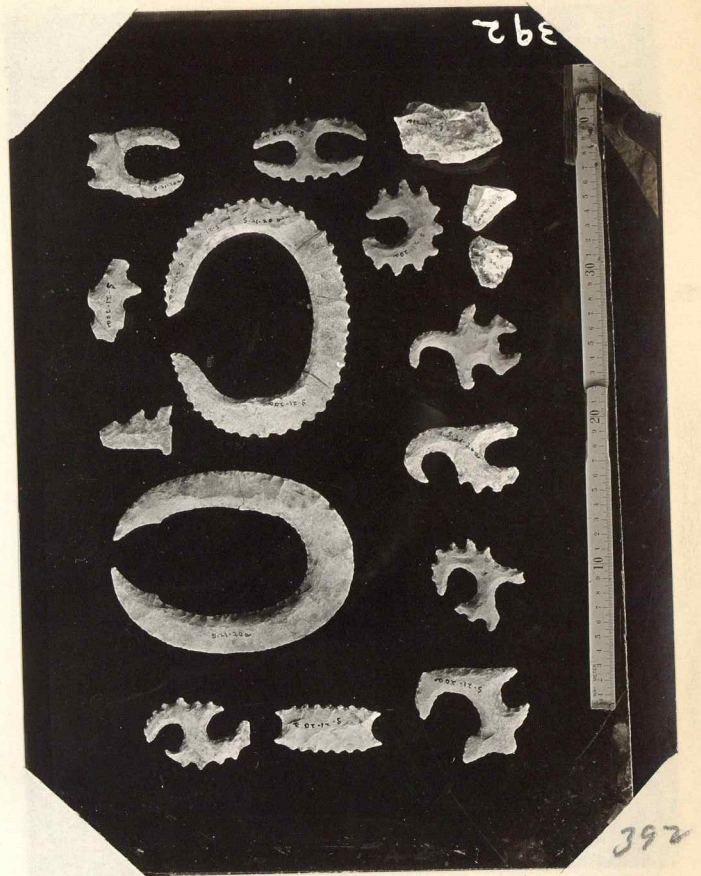
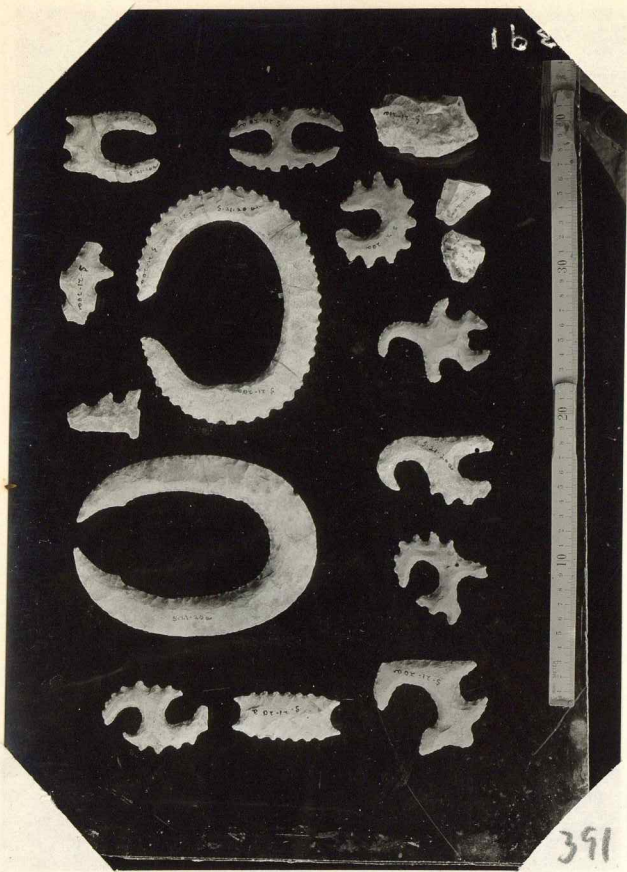
389

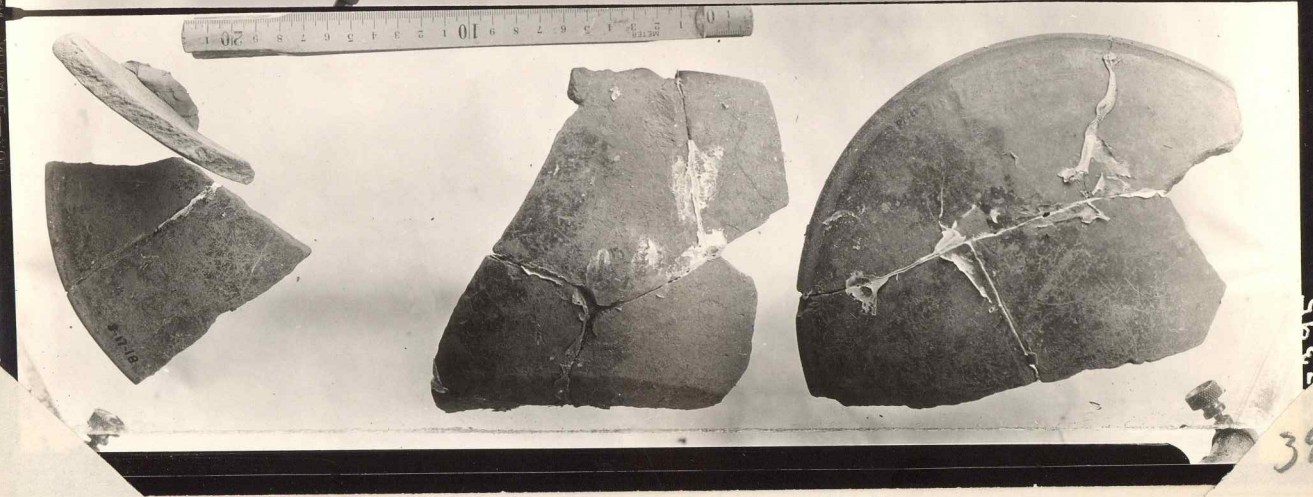
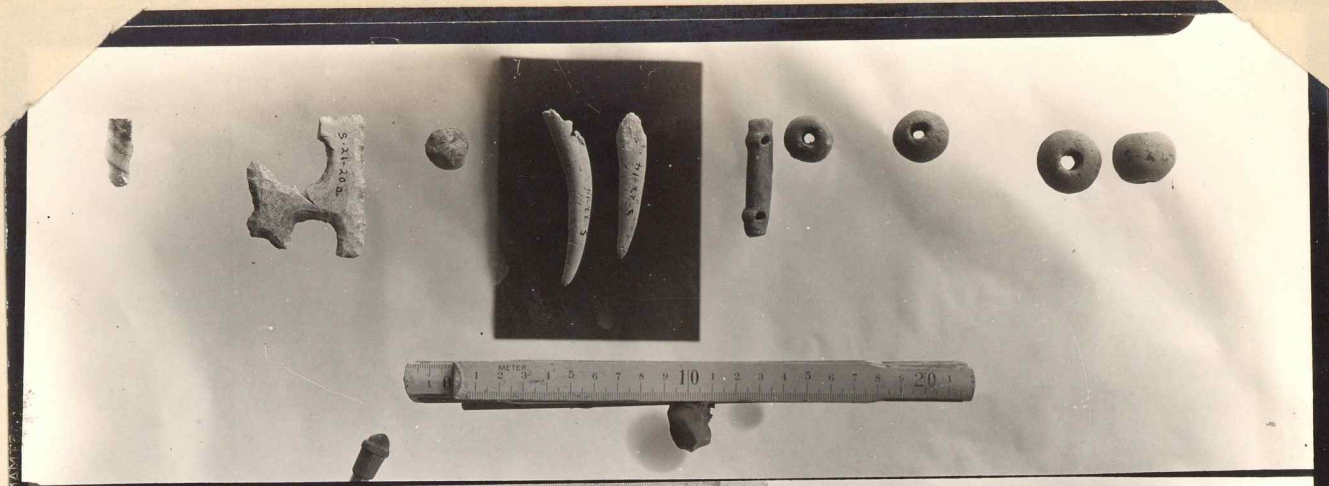
1-389

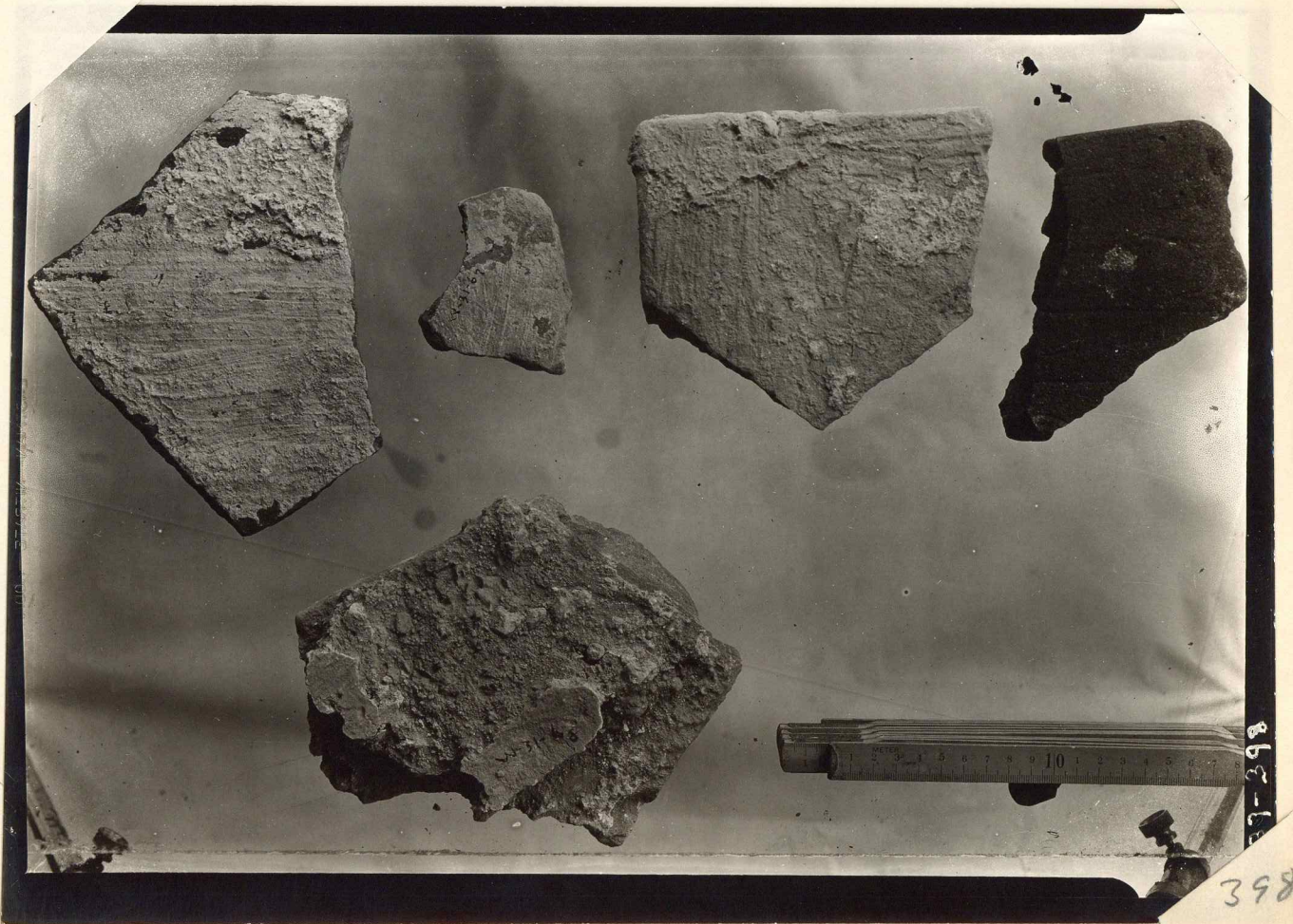


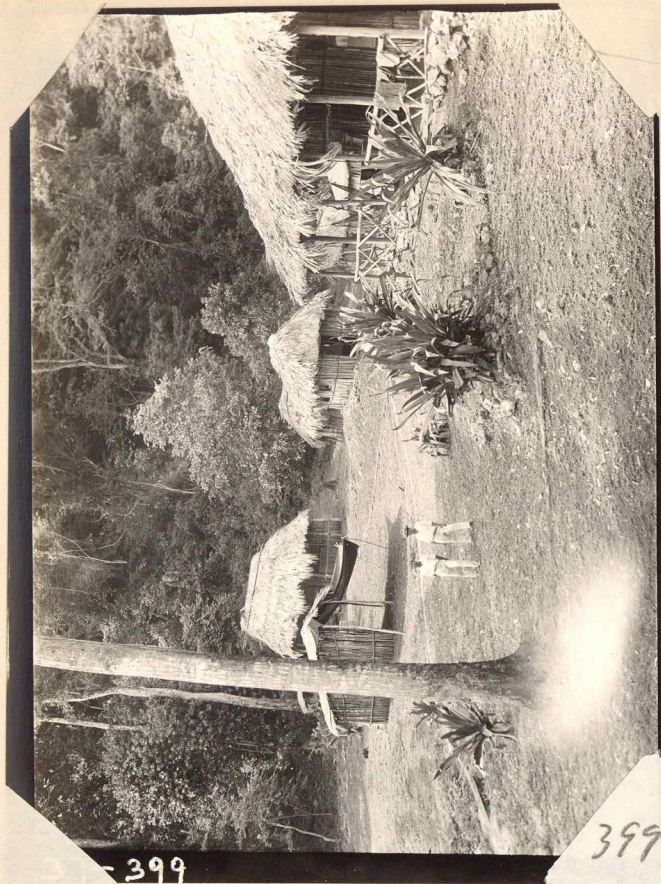
390

1-390









399

399



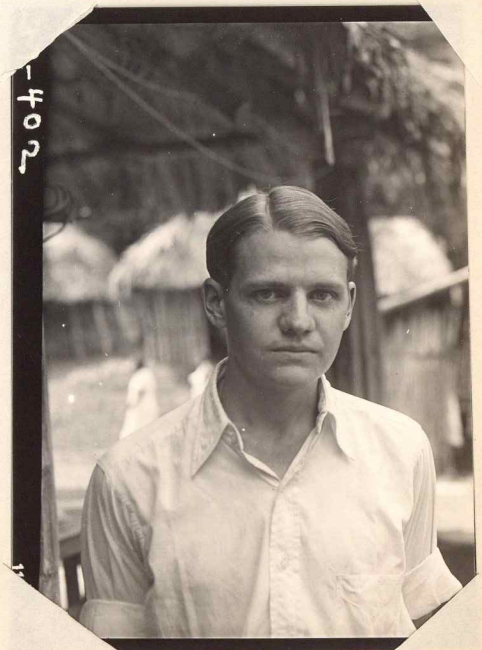
37-400

400



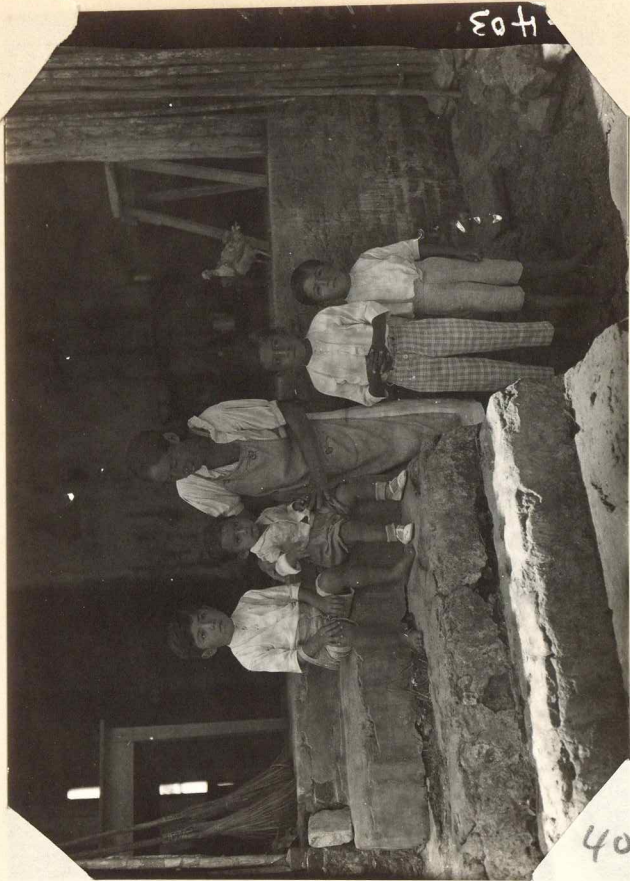
37-401

401



37-402

402

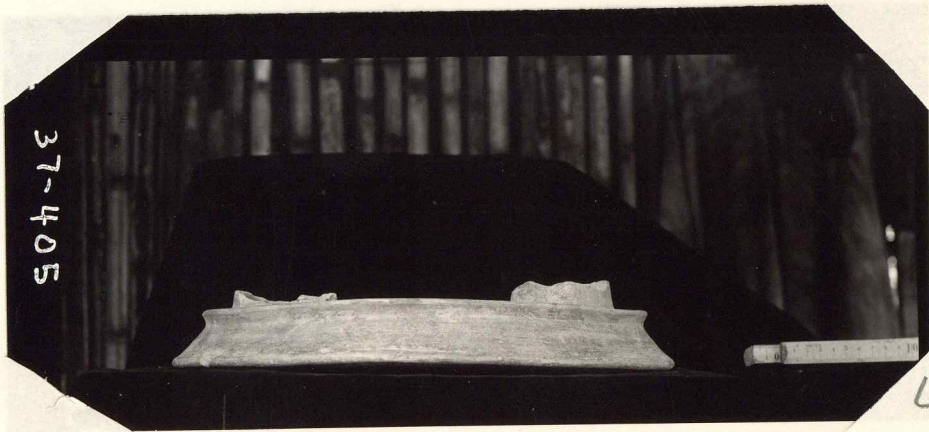


403

403



37-404 404



37-405

405



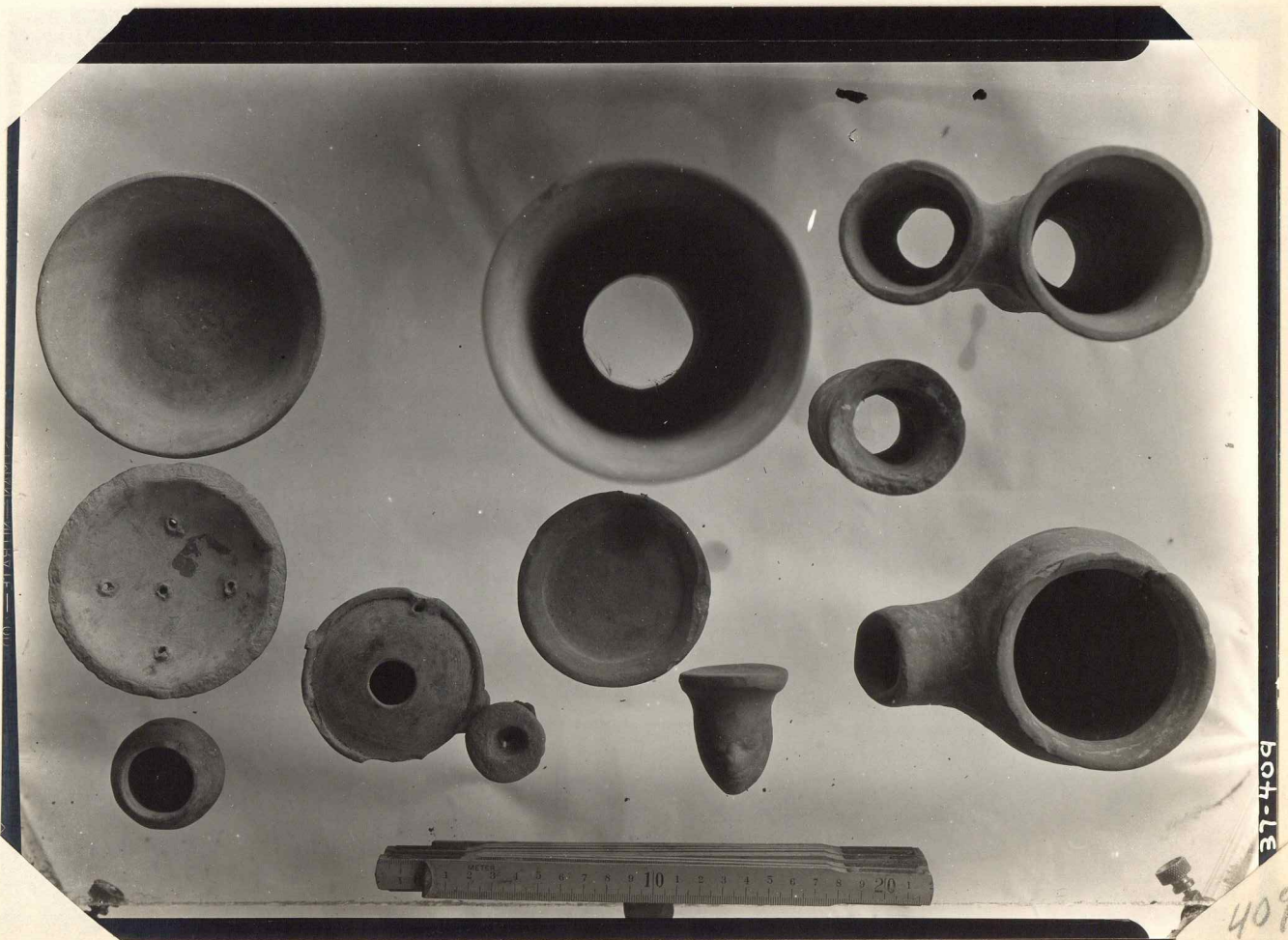
37-406

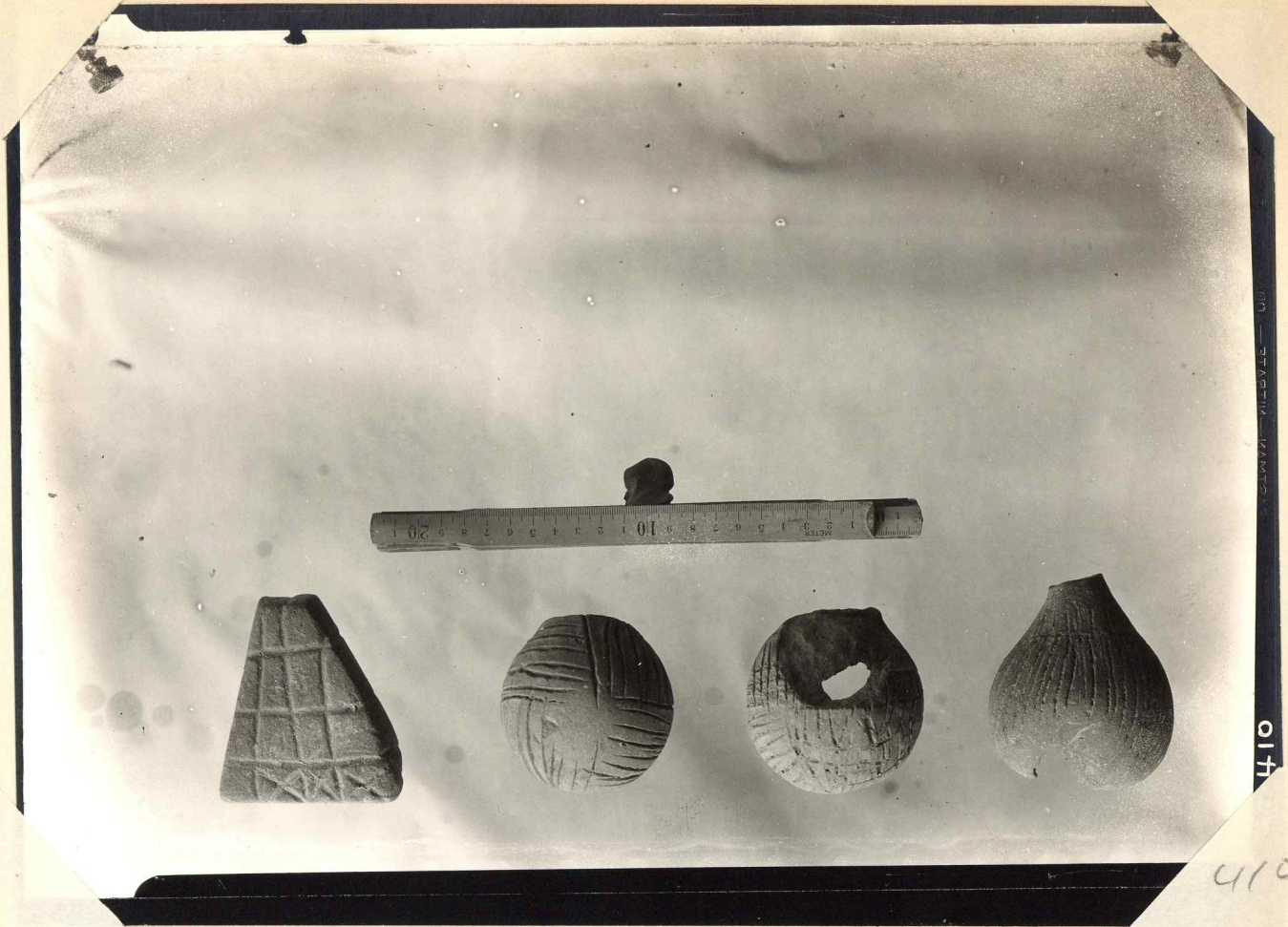
406



37-407

407





410

410

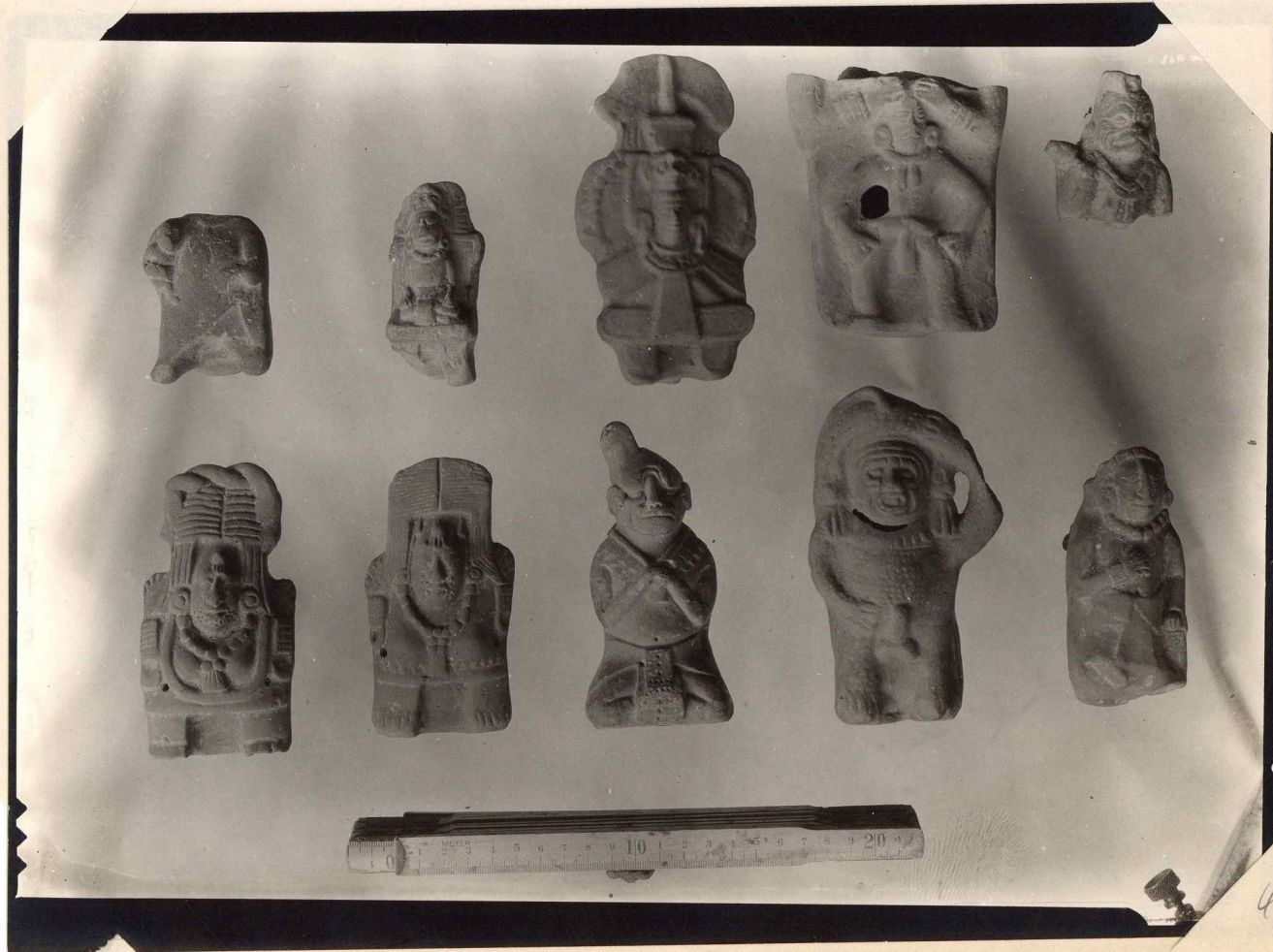


411

411



412



7-9-42 (-413)

413



