

Pics 3-4

5-11



164



Pics 3-4

165



166

whisk = Yanshuo wall.  
went alone ten - vt to  
R. on slope 18 F. 1000, no M. in hand. L-shoko house.



37- 167



37- 168



37- 169



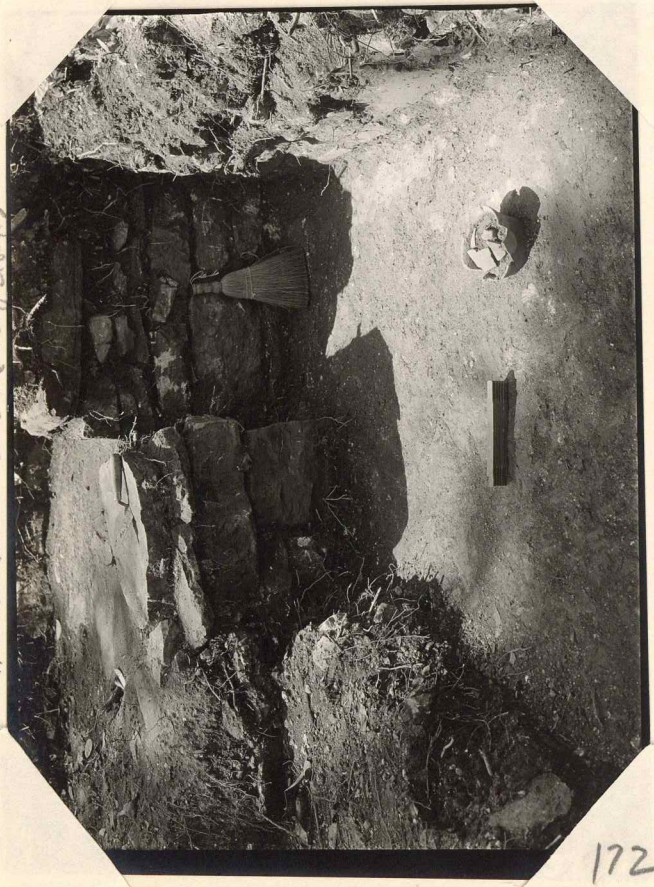
170



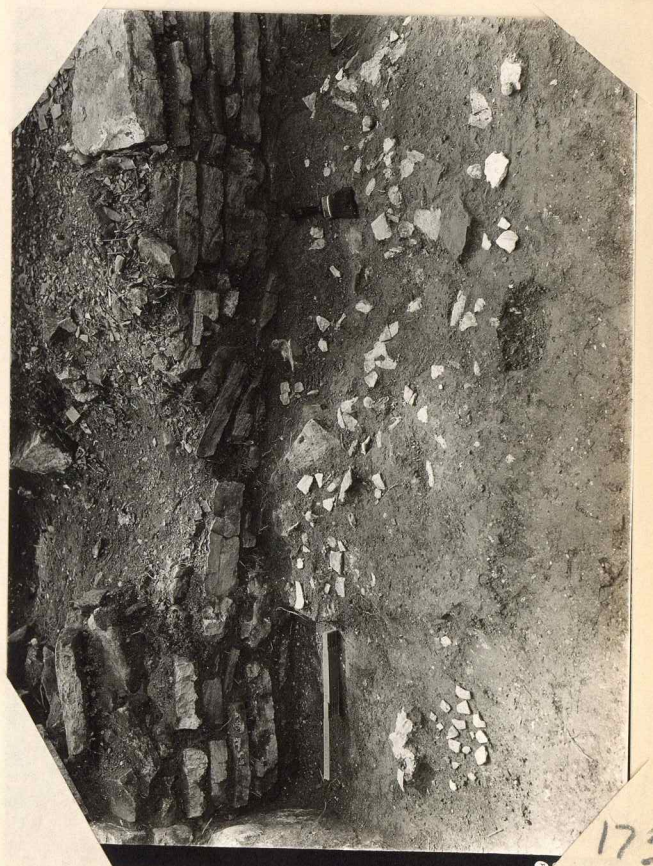
171

Room 5602 with 2 pieces  
of bowl (?). This went to quart.  
Bowl on floor

Small bowl in site in room 12.  
Found in corner of bench, white vs. Pen 12-13.  
Bowl must be W-8-83 (to find)



172



173



37-175



174

J-13



37-15

175



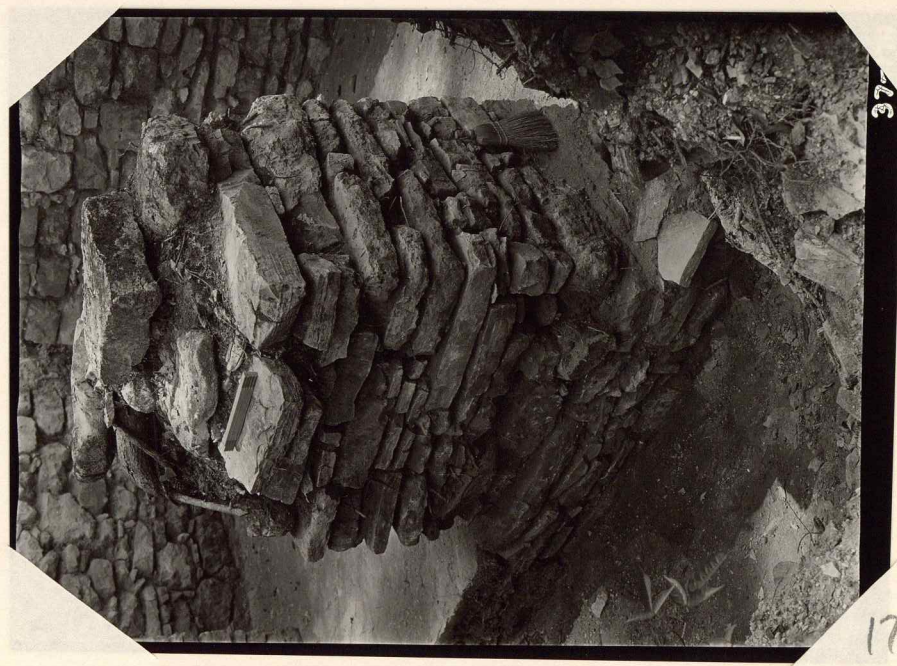
176



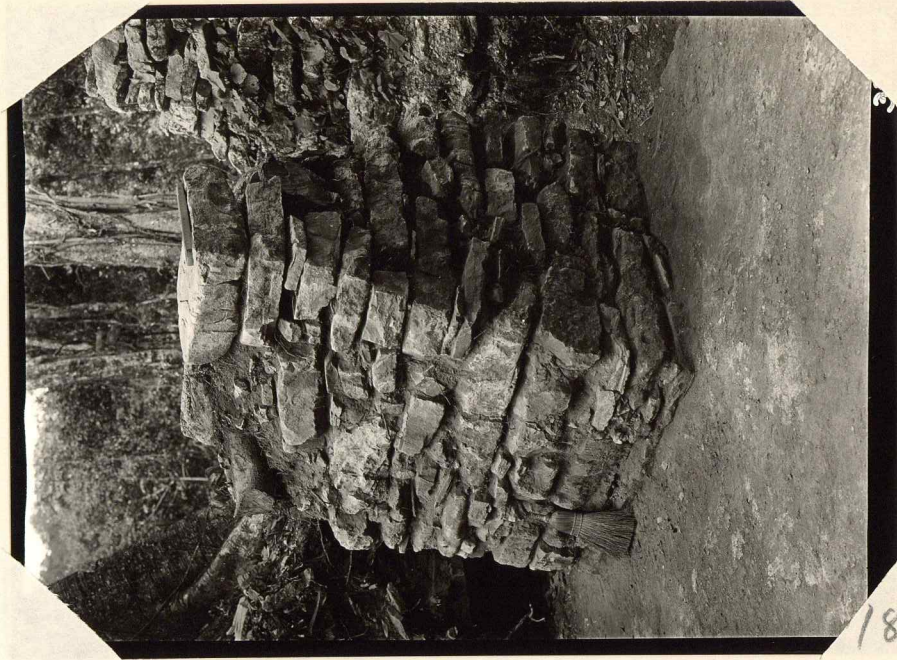
177



178



179



180

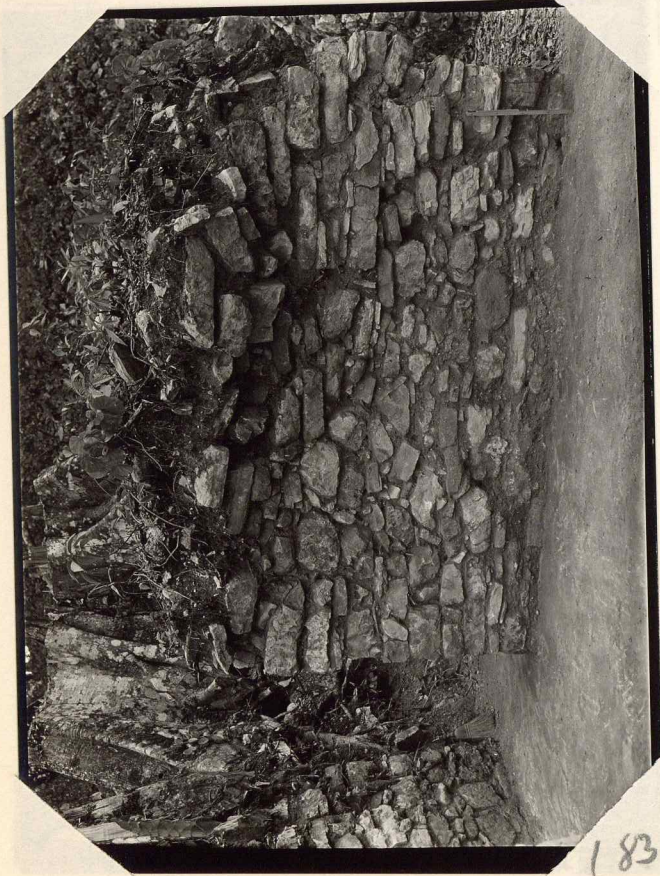


181

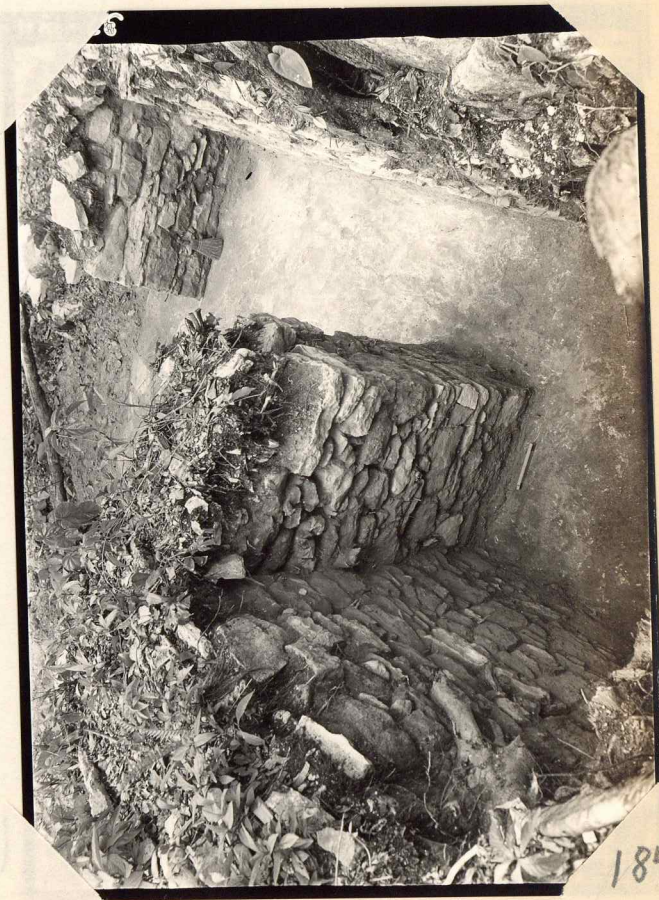


← Welsh (Humen)

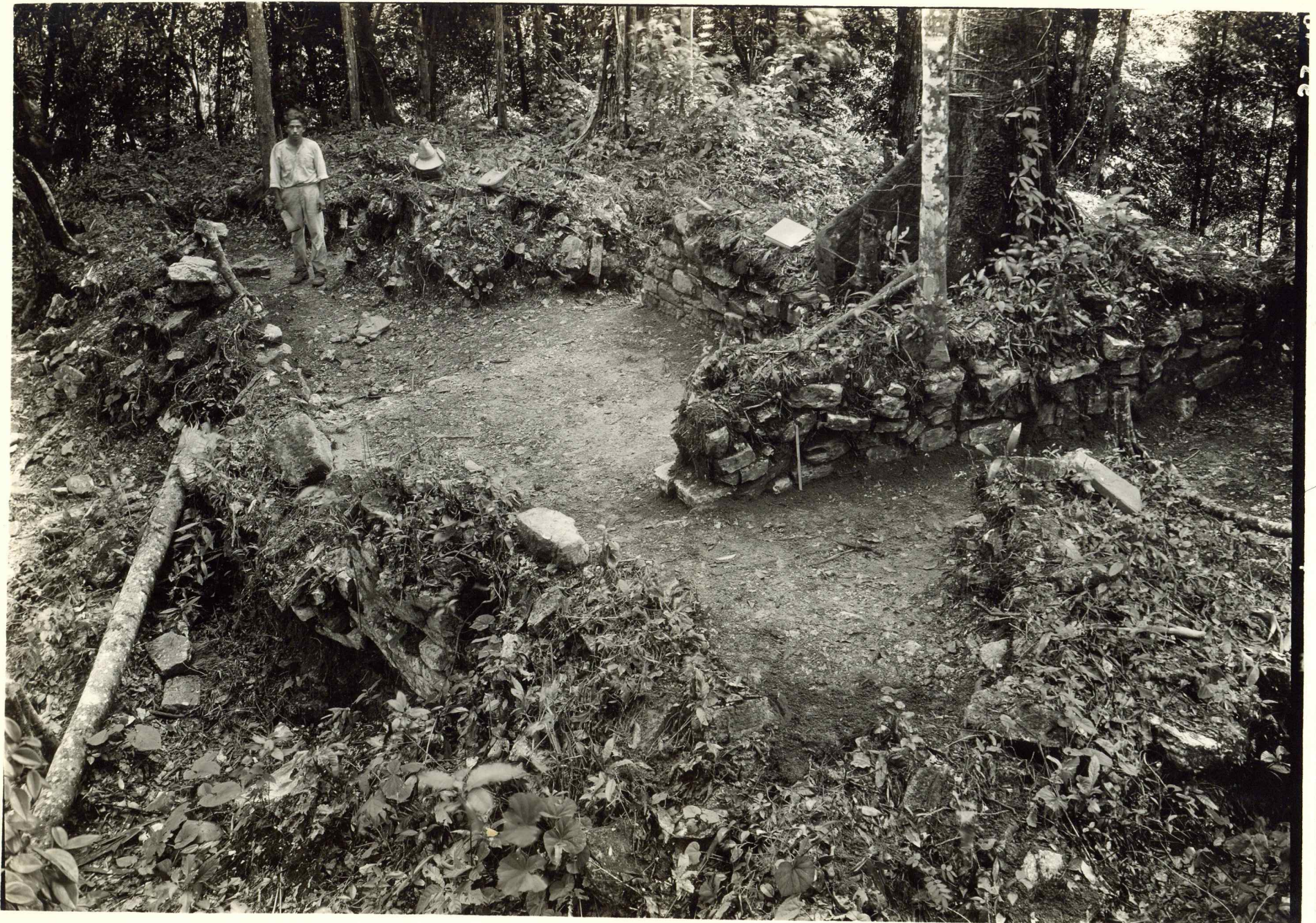
182



183



184



37-185



185

J-20



186



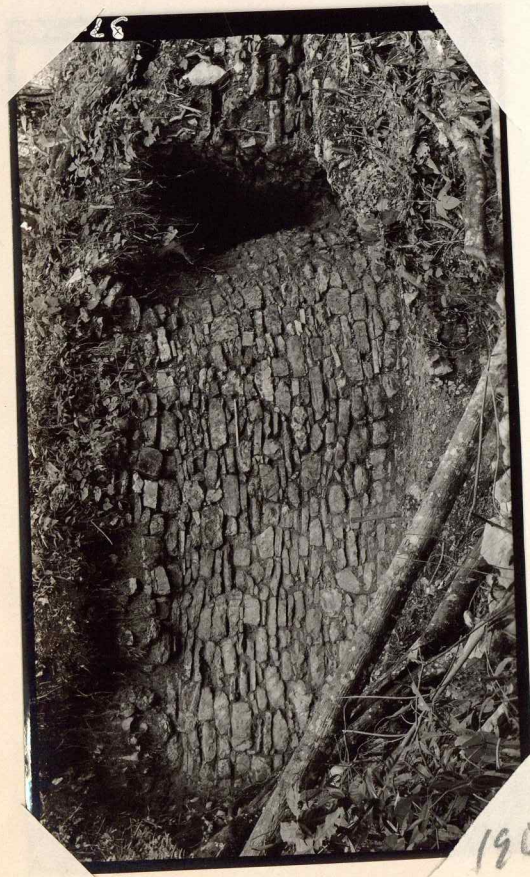
187



188



189

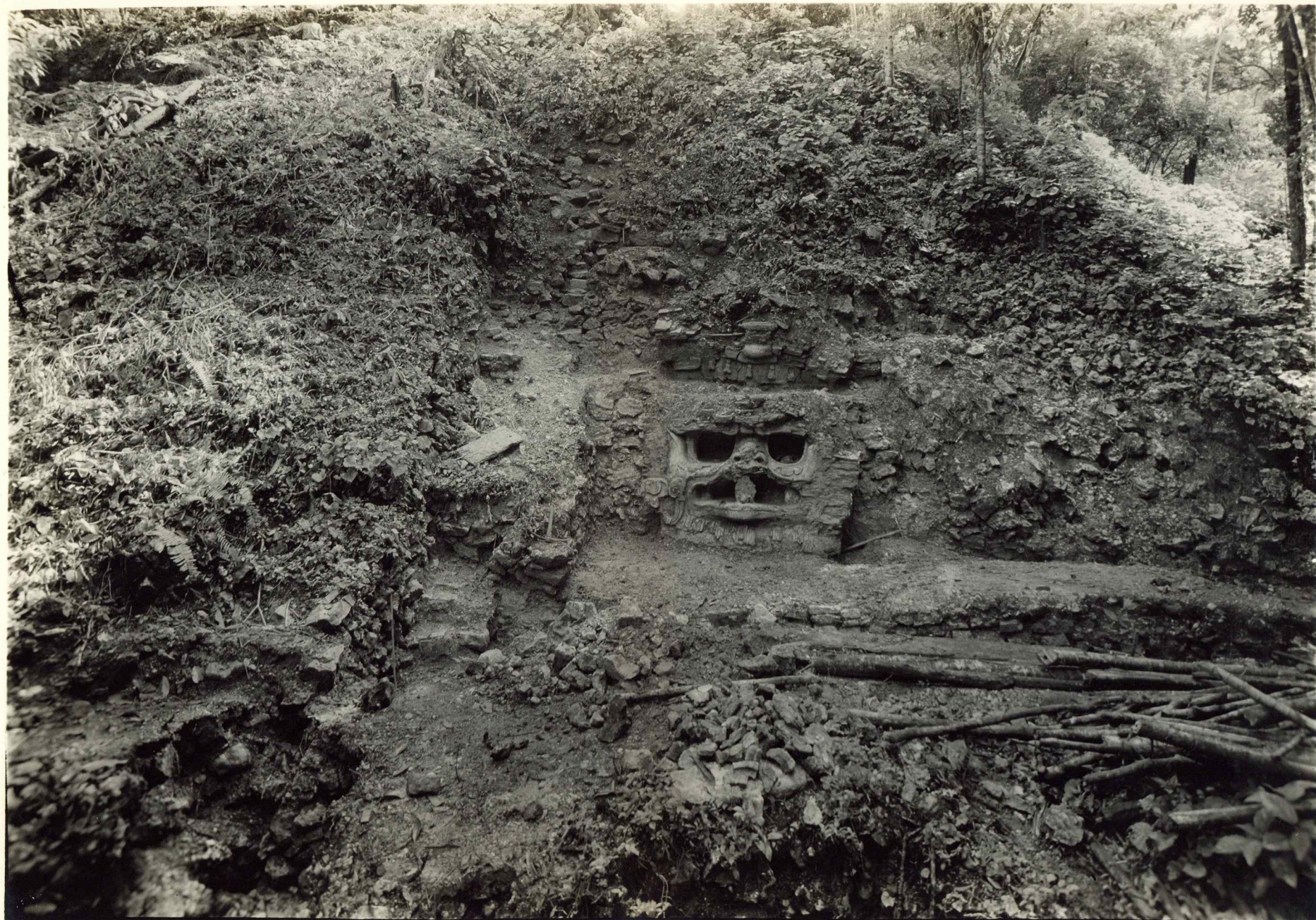


26

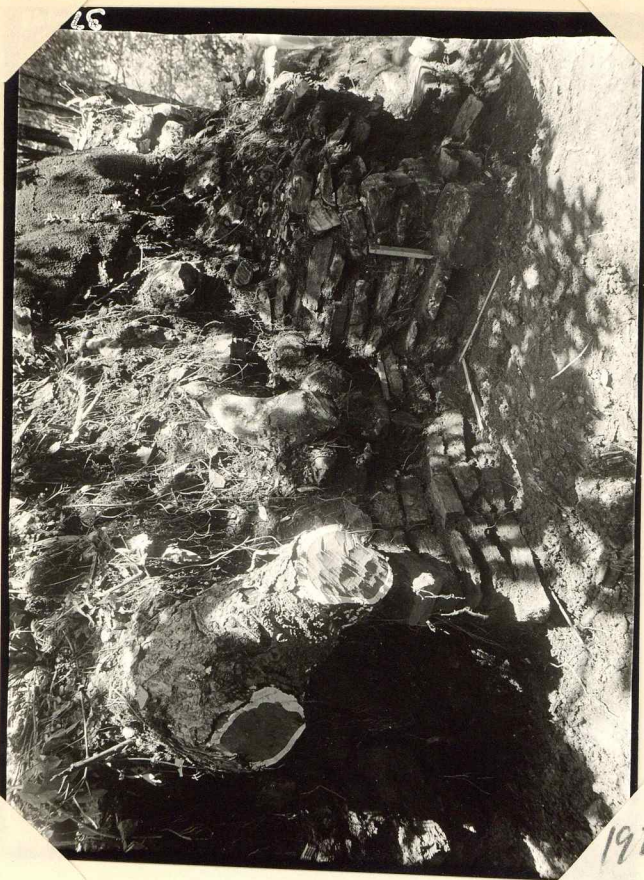
190



191



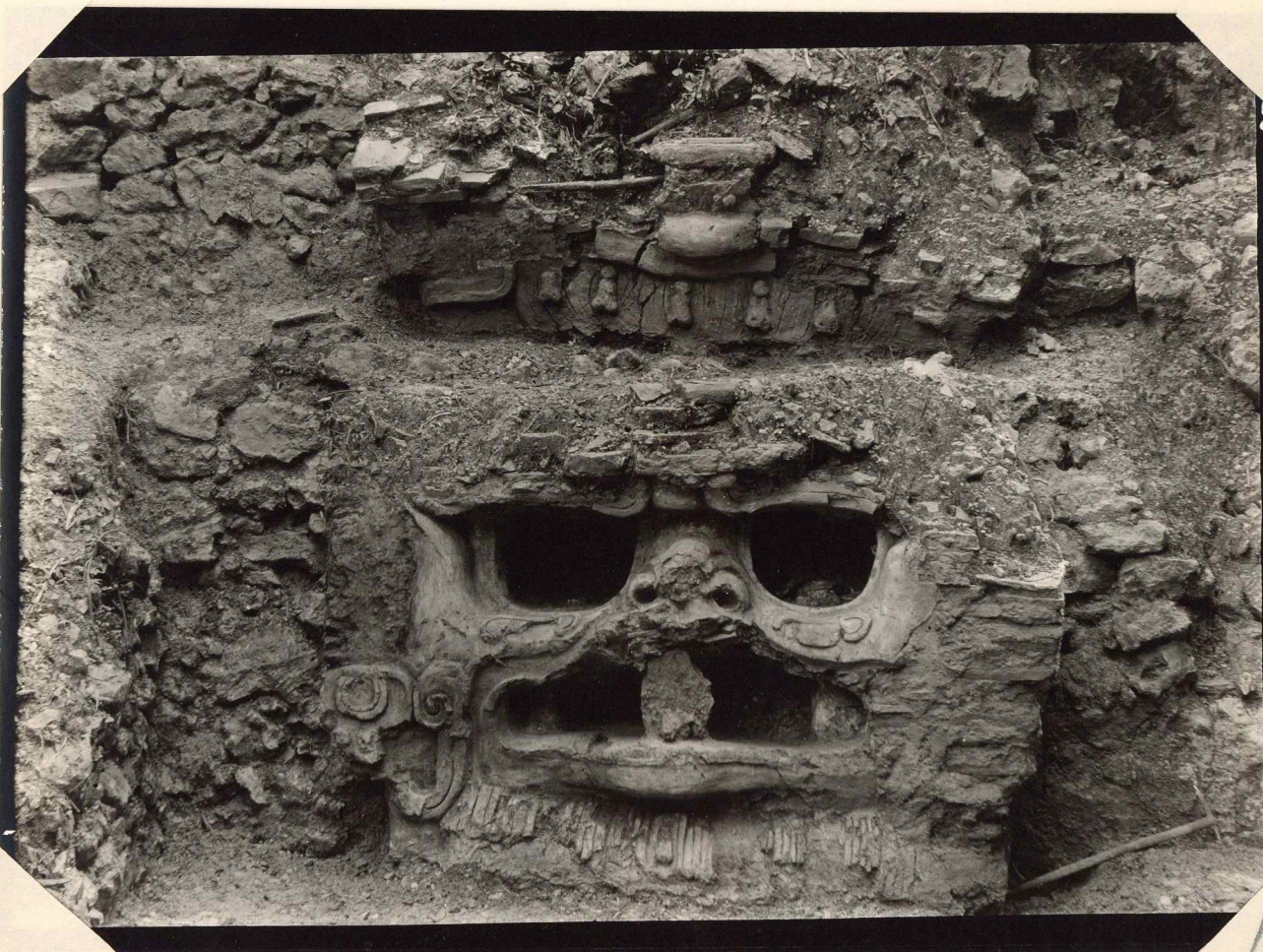
37-194



K-5



195



196



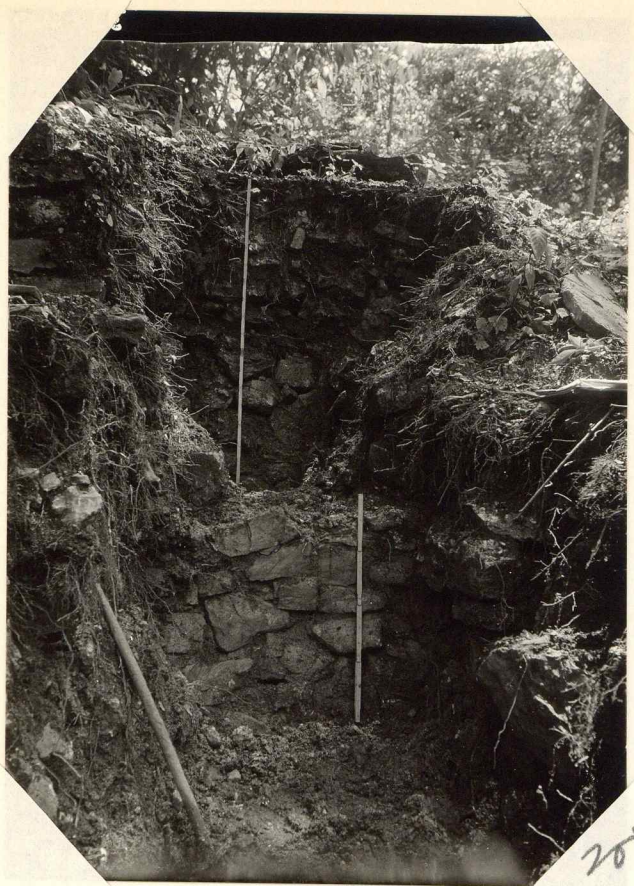
197



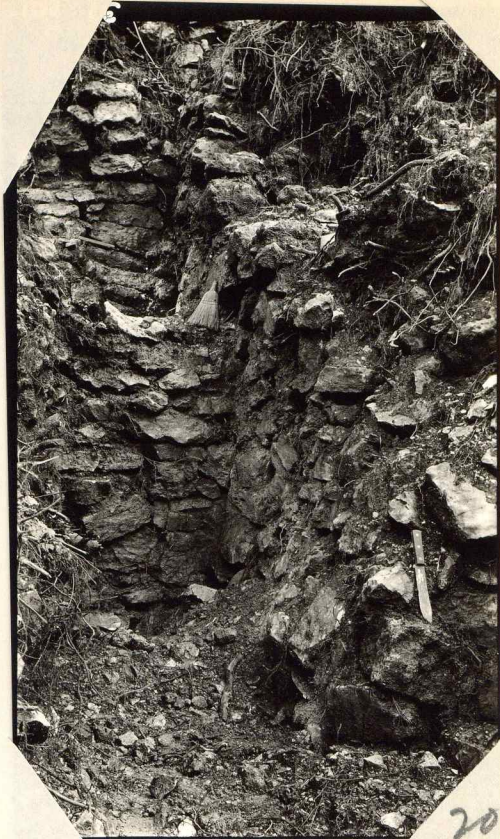
198



199



200

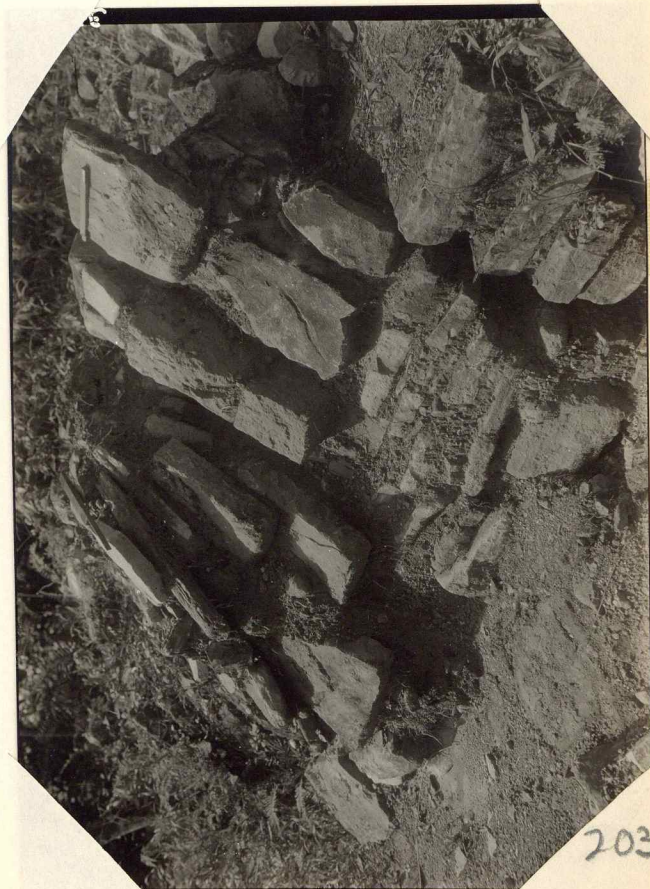


201



37-

202



0-13

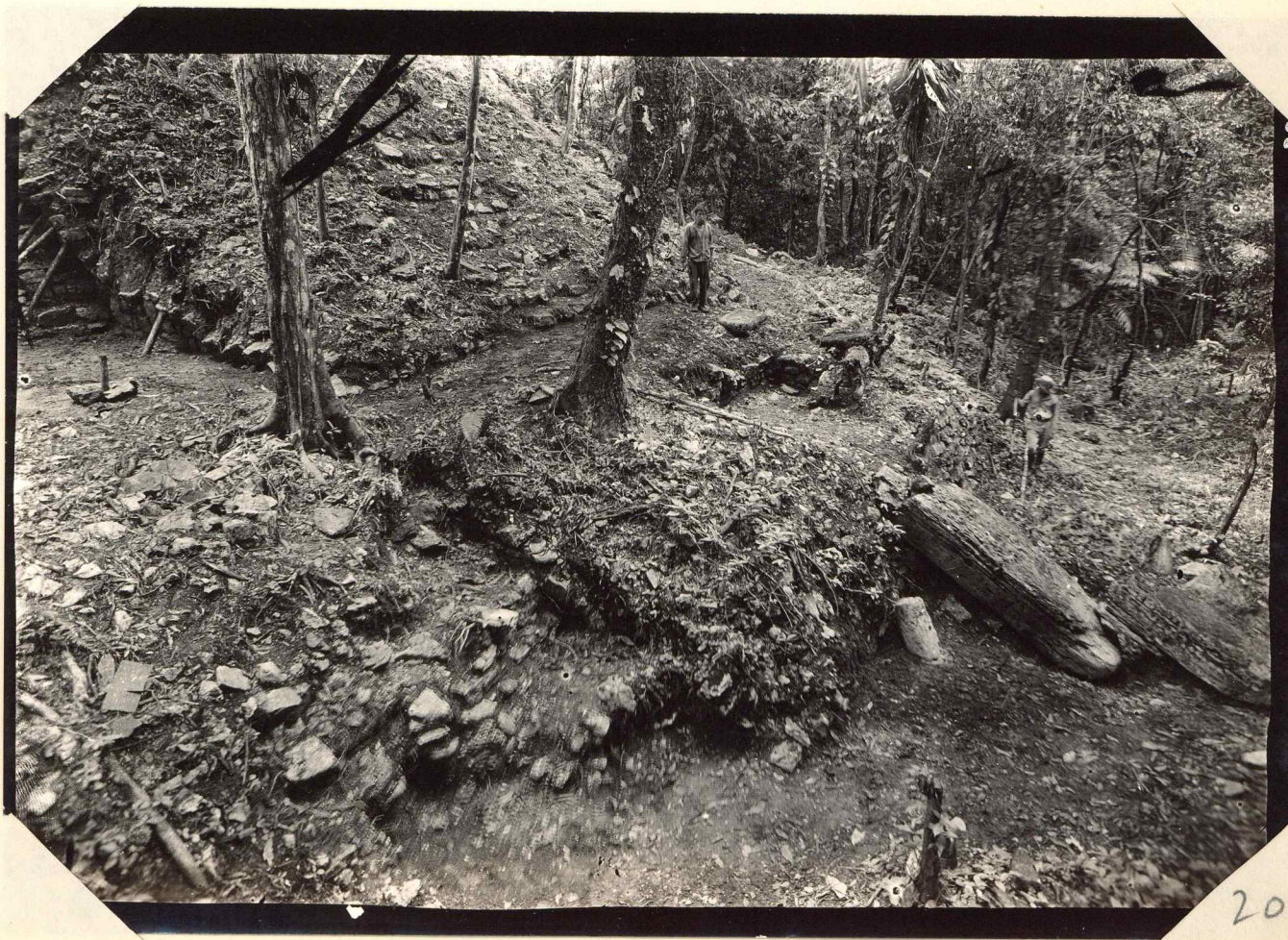
203



37-204



204



205

R-1

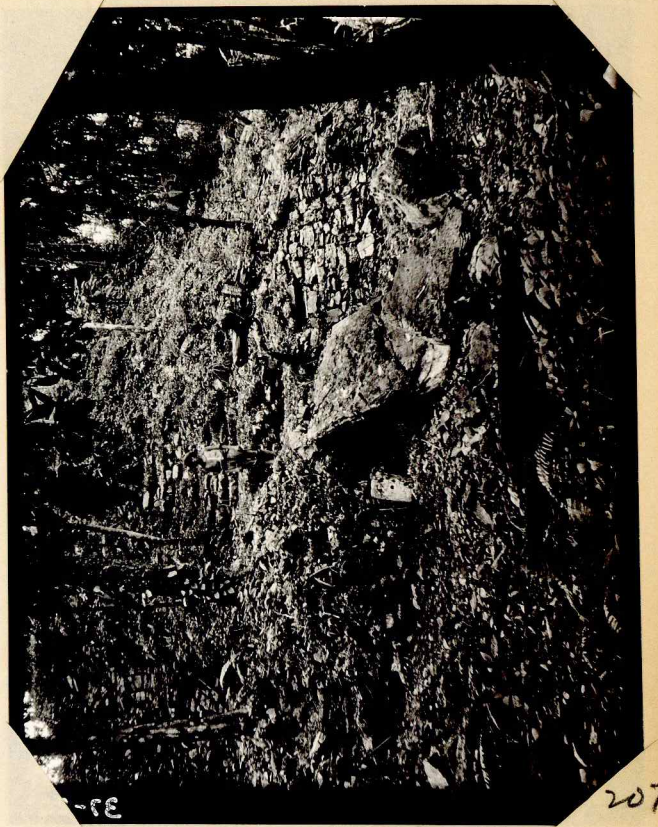
100-100



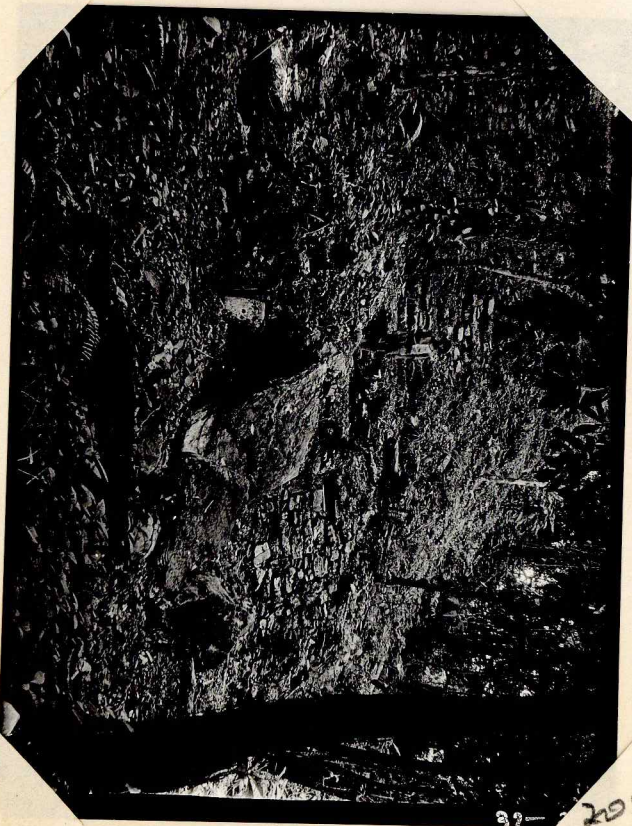
37-207



206



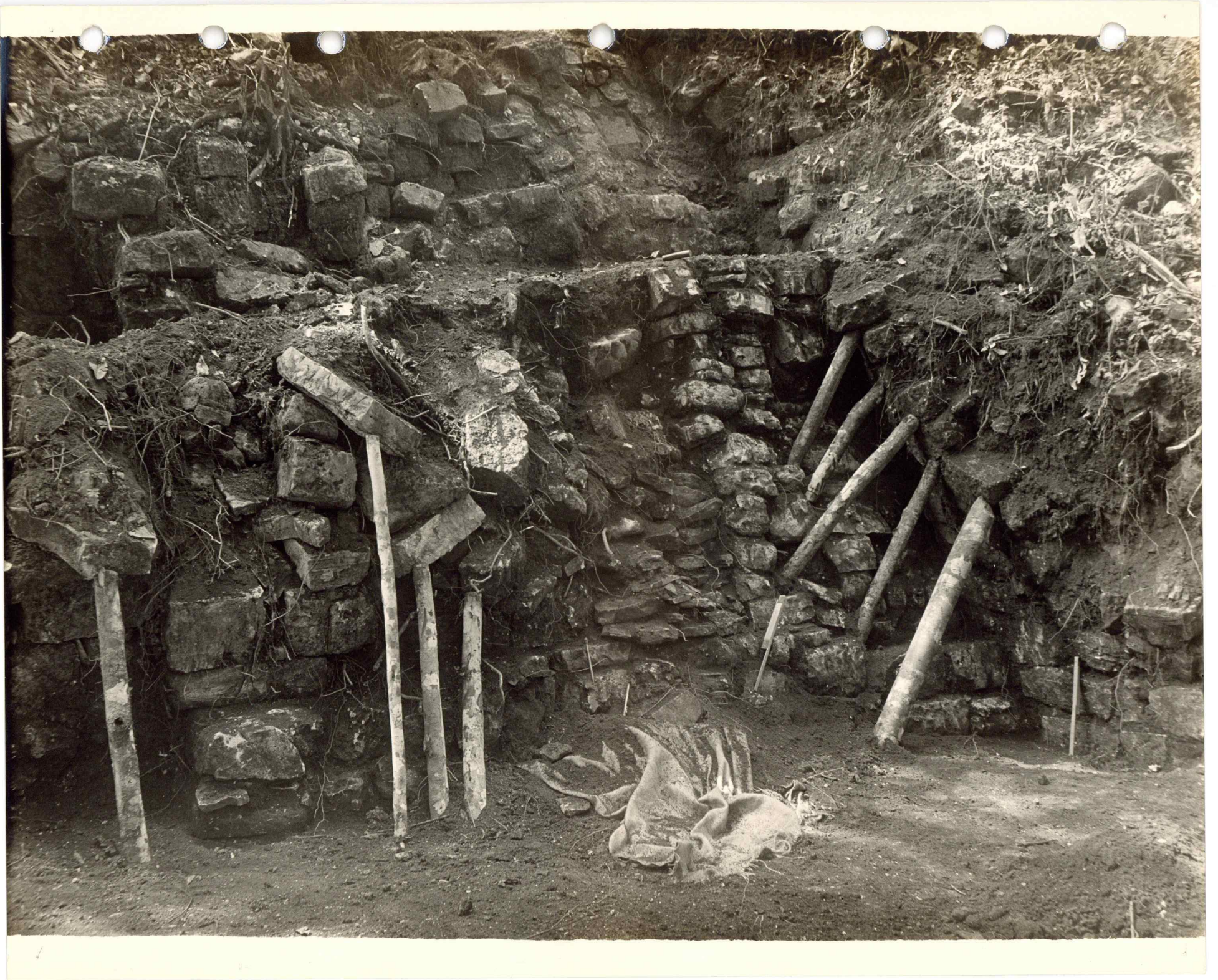
207



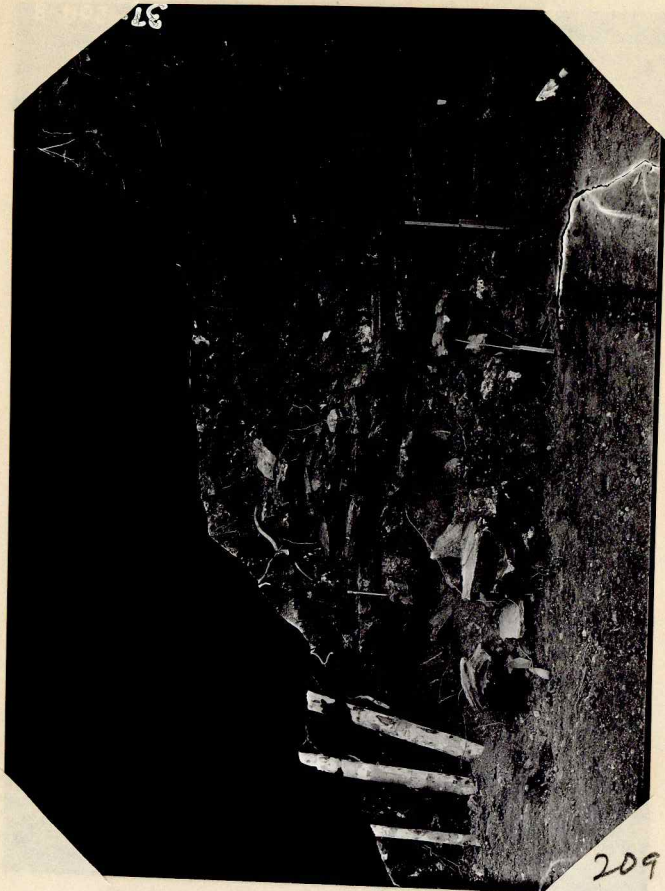
208



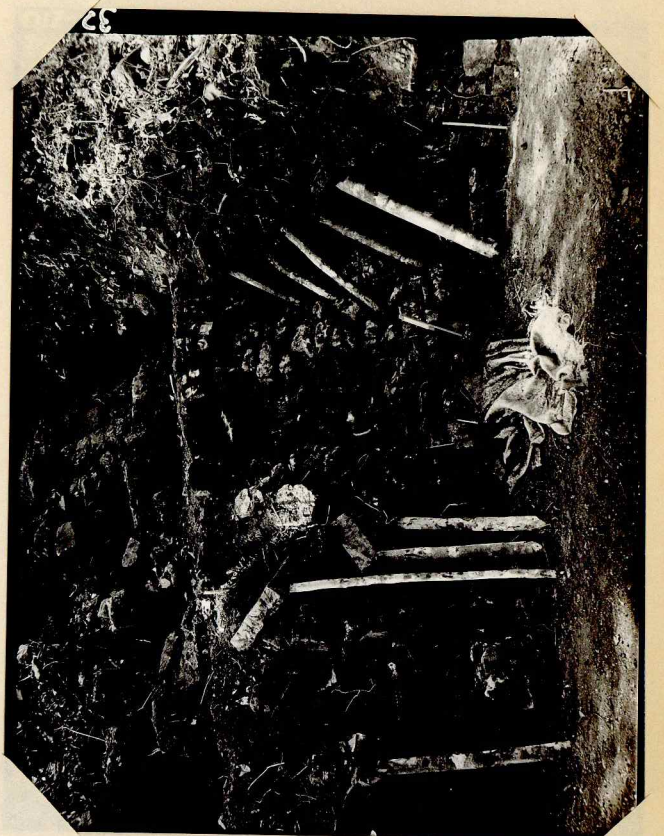
209A



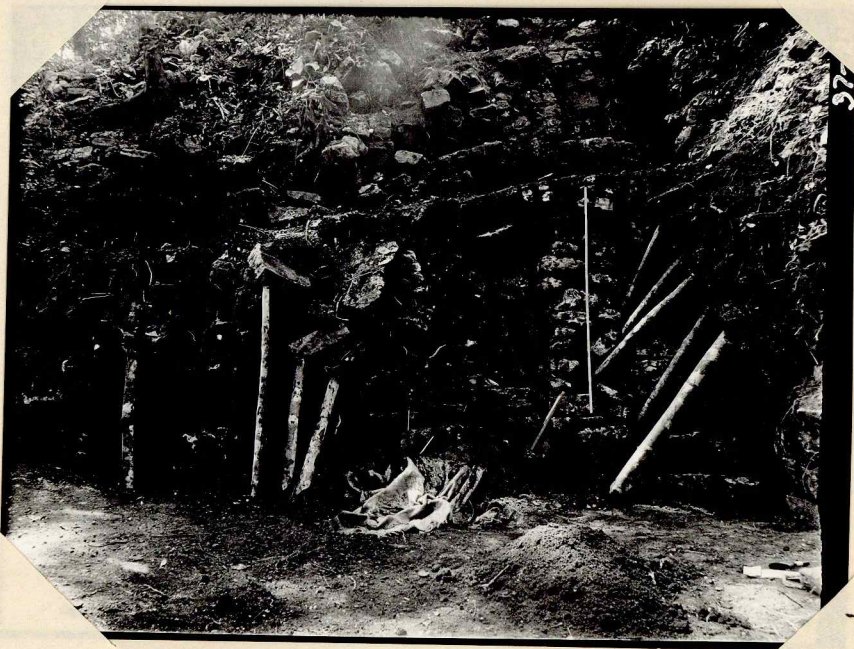
37-210



209B



210



211



212

No photo - no  
checked in field book.  
No see note - round mast  
corner, suggestion of open.

Field 144

213



37 214



215



216



217



37-219

62  
1



218



219



37-2

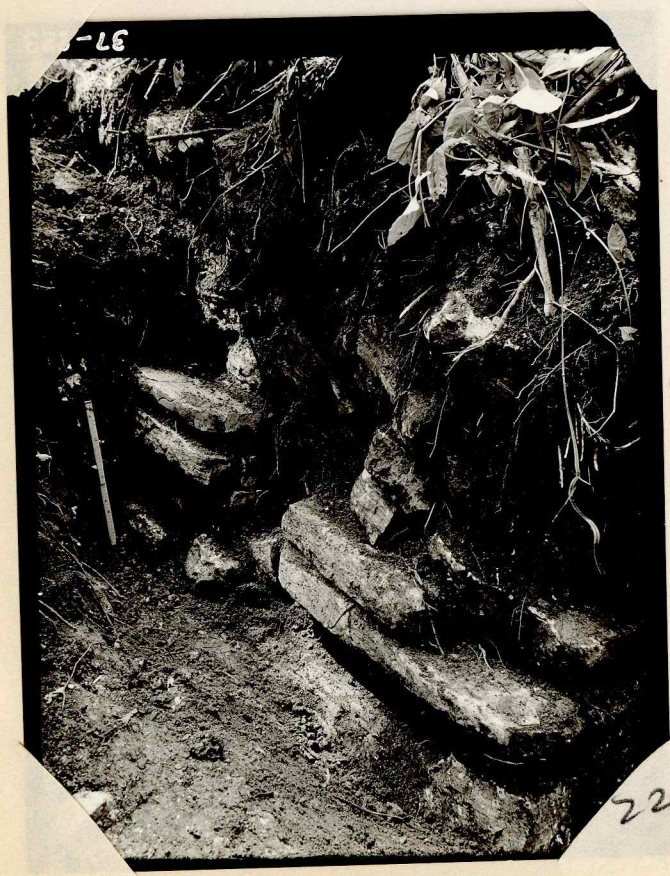
220



221



222



223



224



37-225



225



226



97-2

227



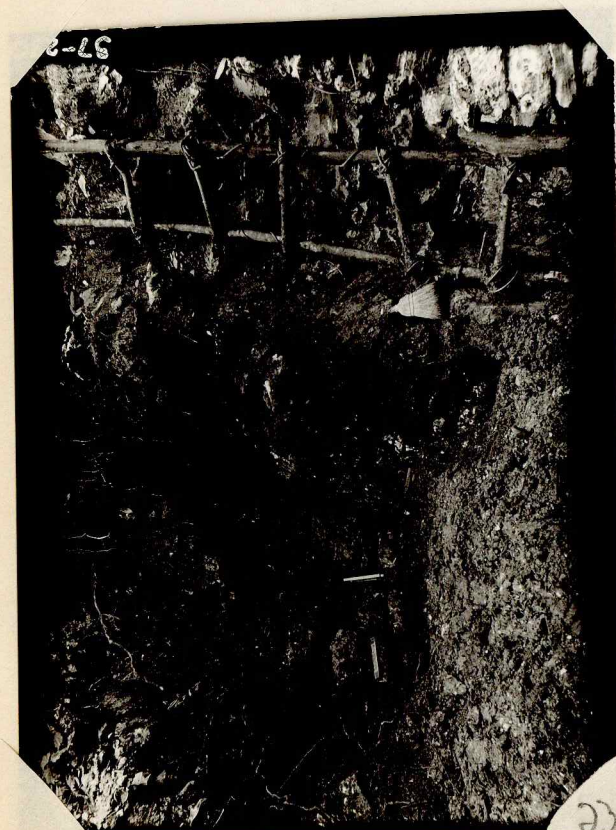
97-2

228



229

229



230

230



231



232



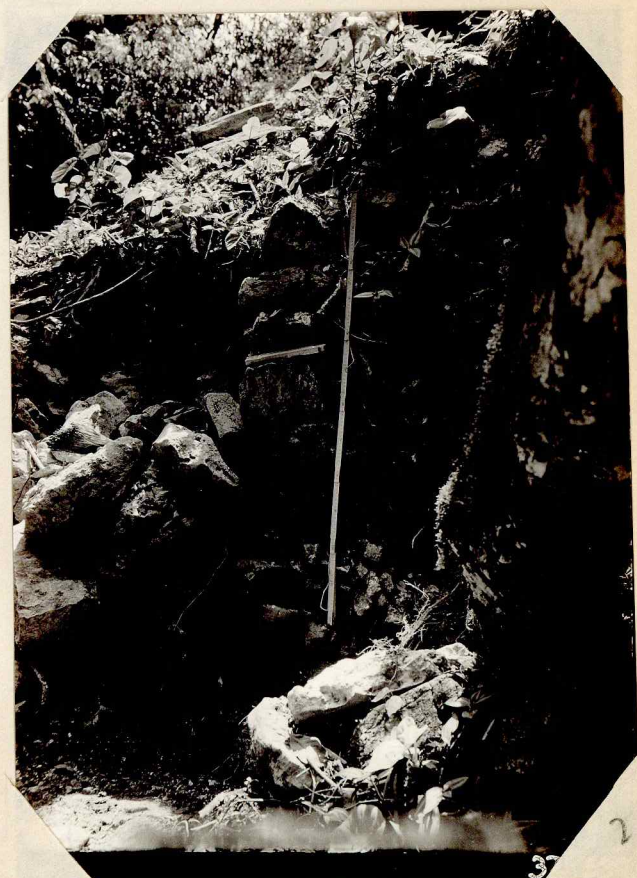
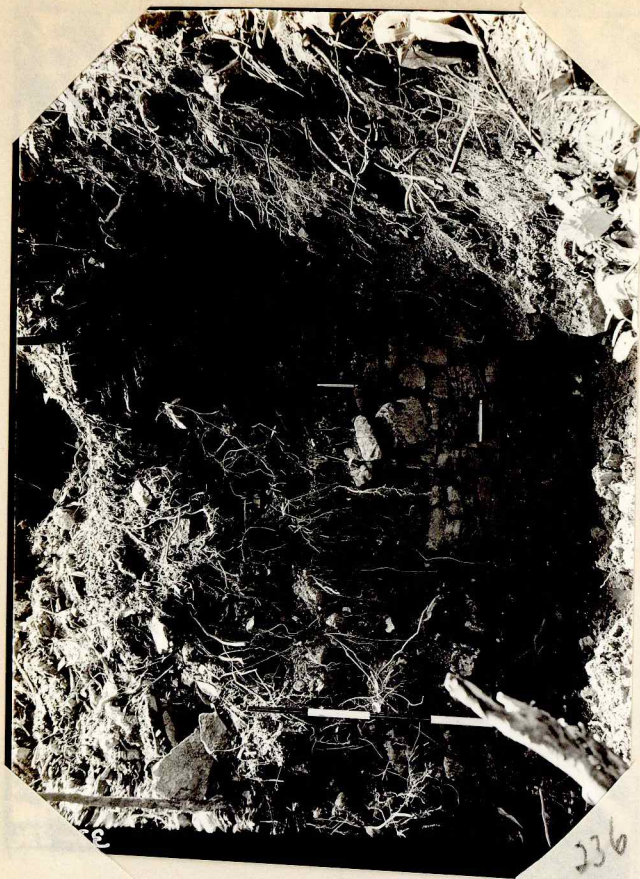
233



234

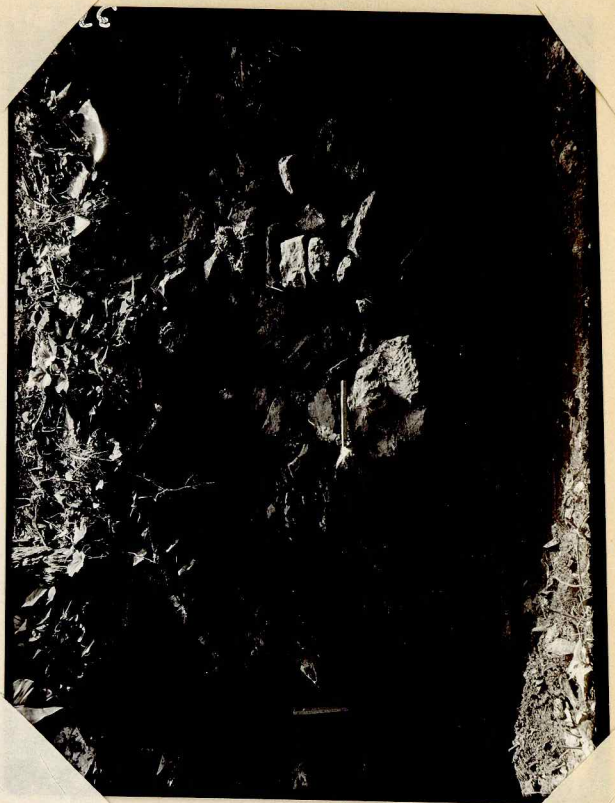


235

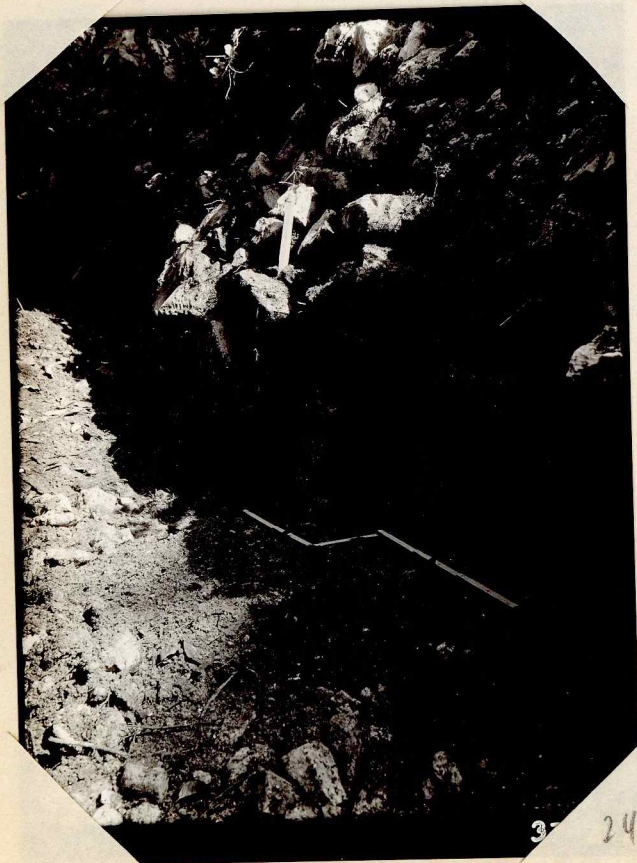




240

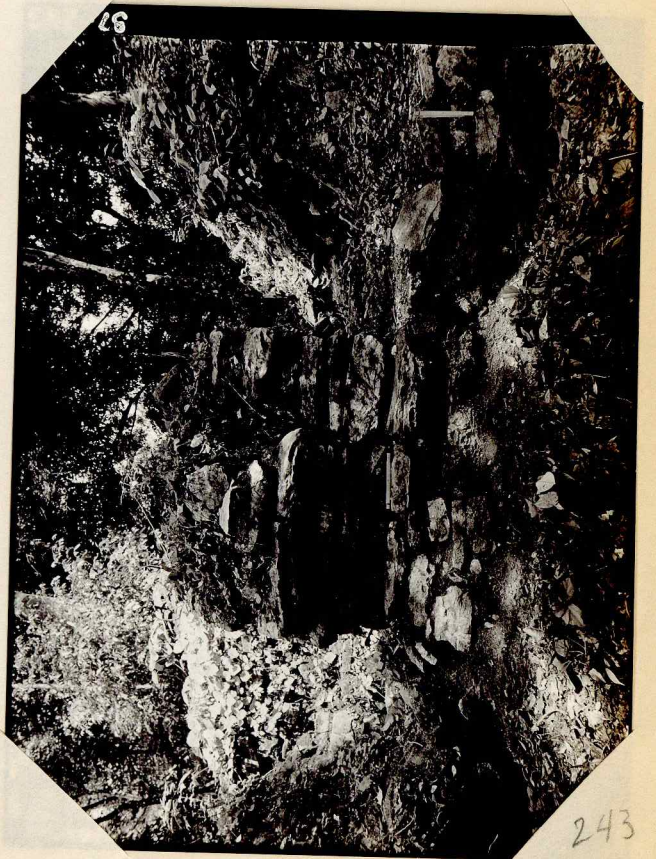


241



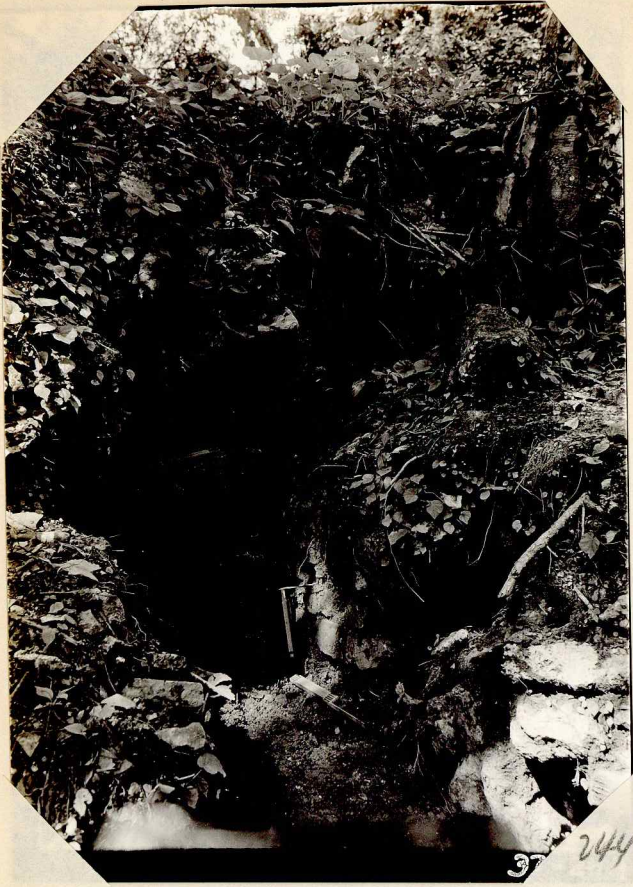
3

242

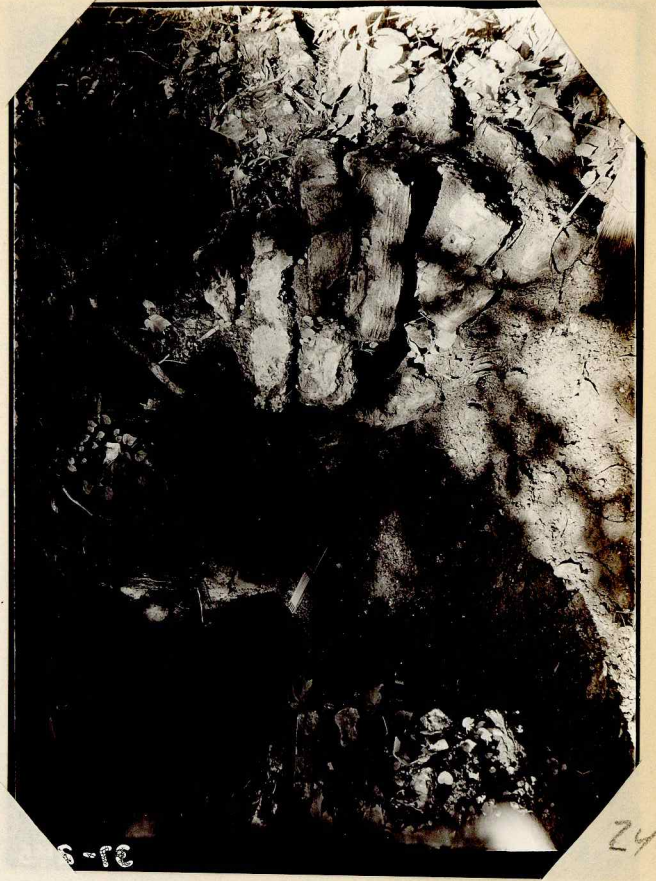


26

243

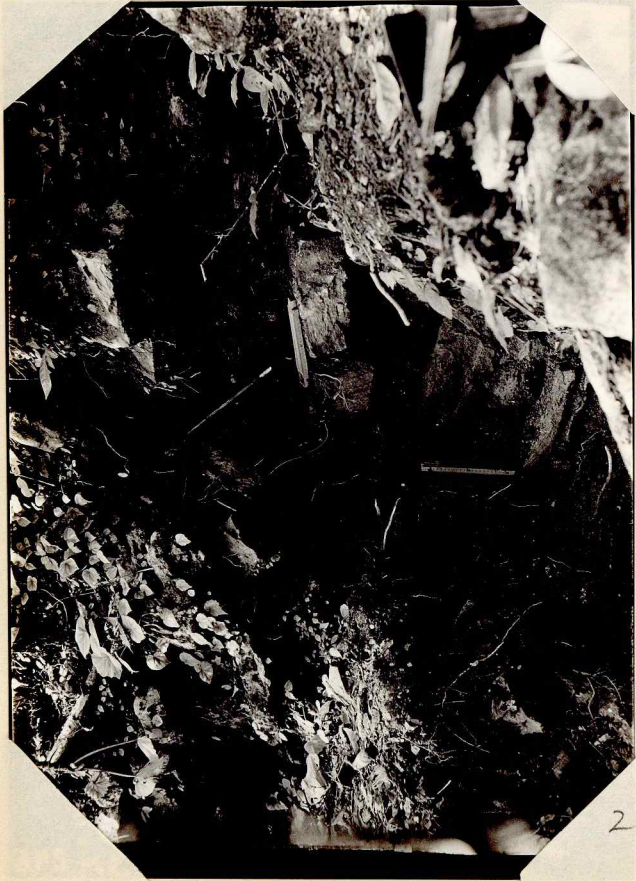


37 244



38-12

245



246

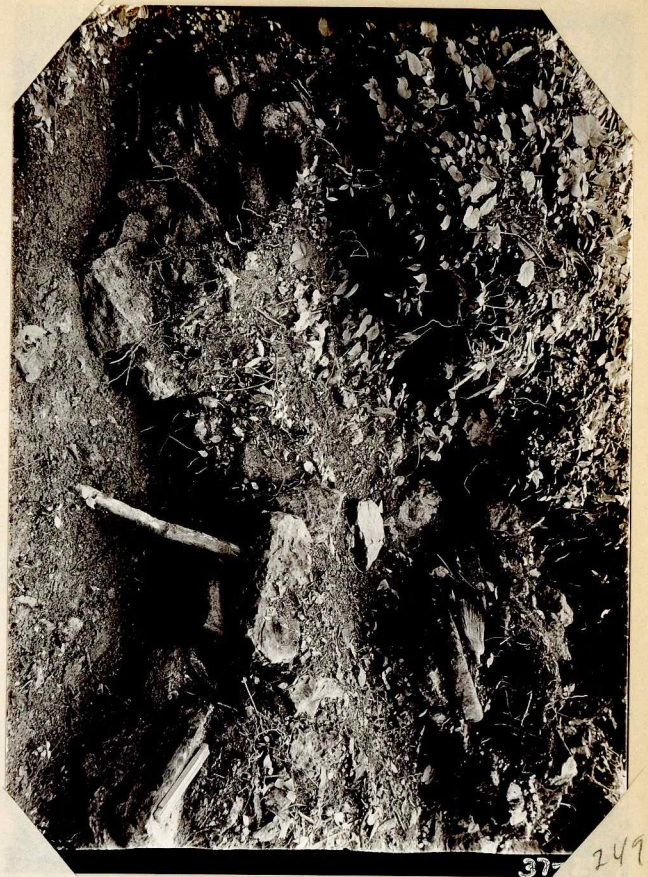


39-27

247



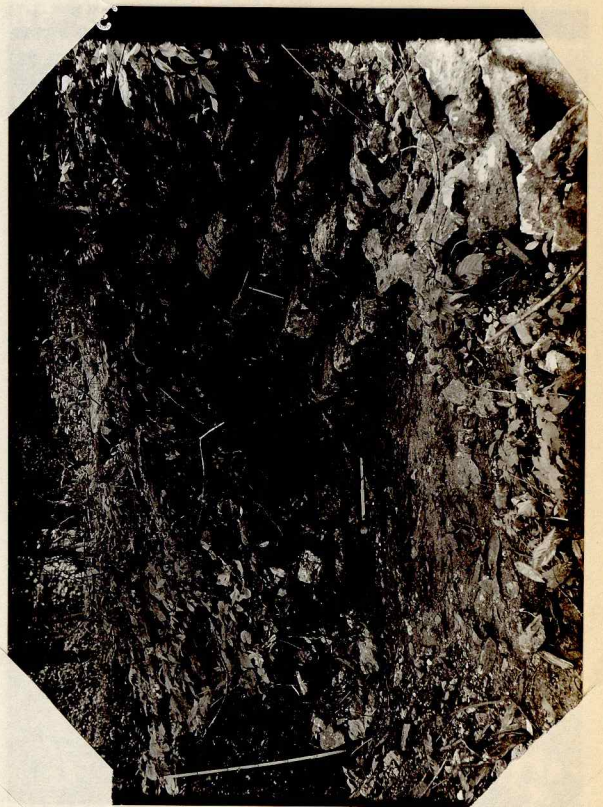
248



37 249



250

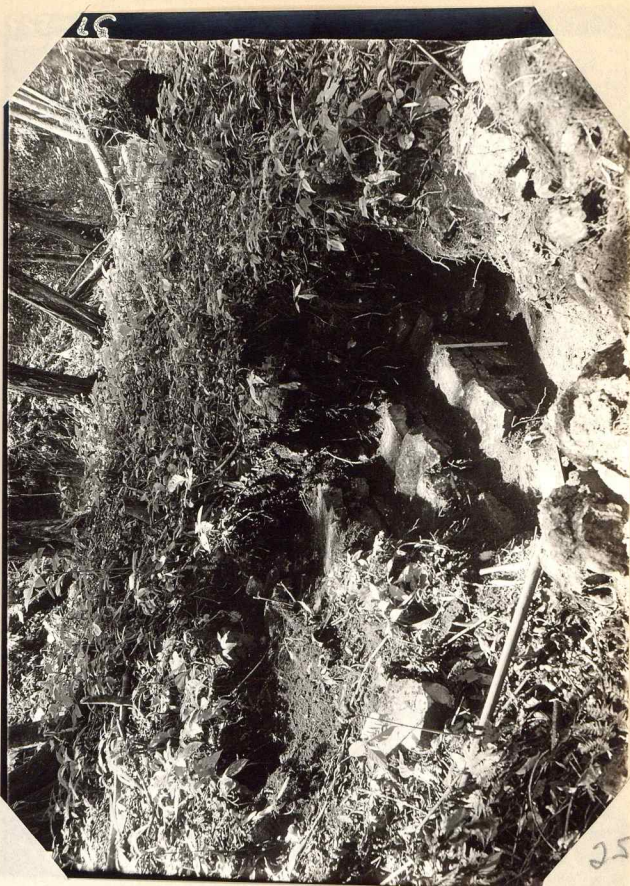


251



252

Str R-5



253

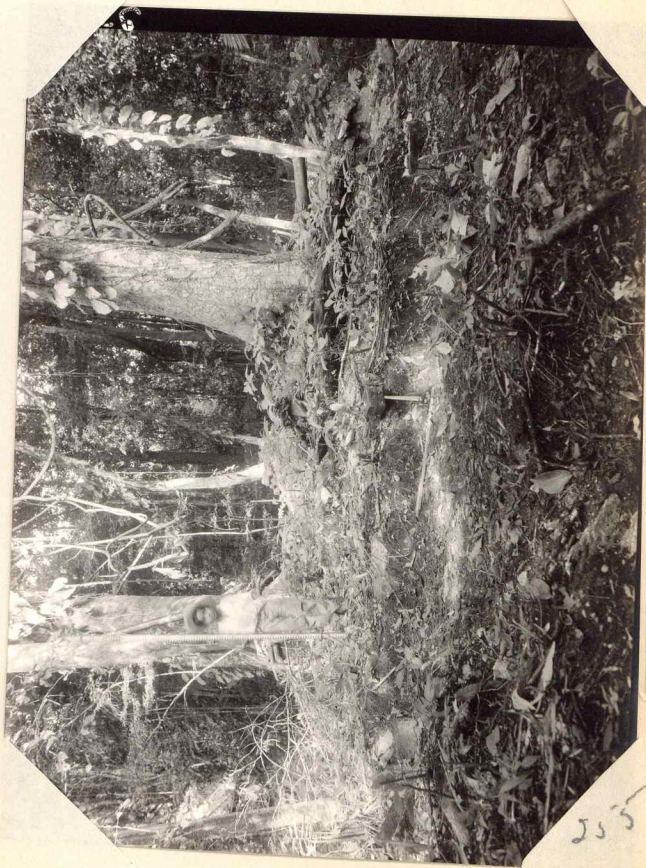
Str R-5



254

Str R-7a

Str R-7a

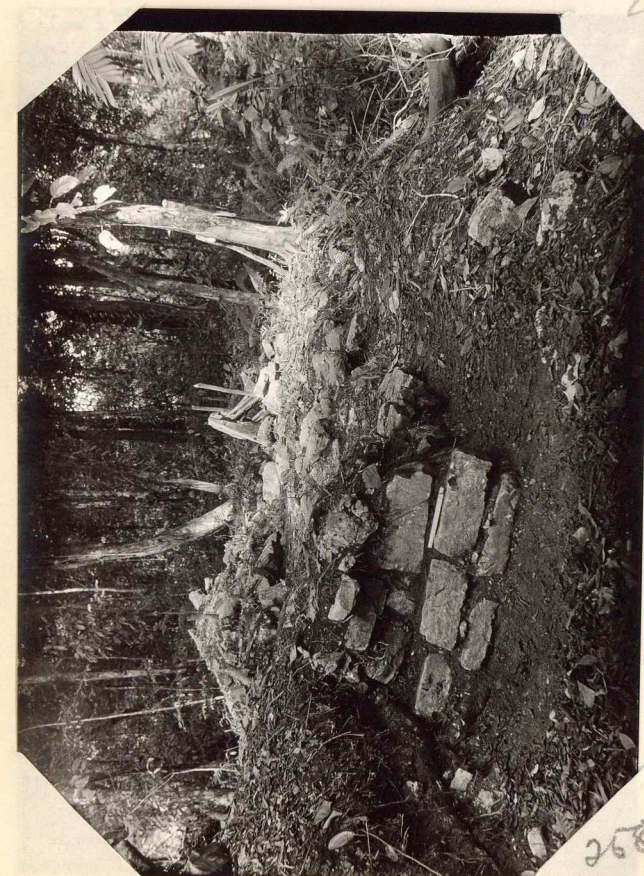


255

Str R-7a

Str R-7a

R-7  
a+b



252

R7b - Rt front corner, plinth & wall-falling back. S41 R-7b wall beyond, thorn logs & sand beyond.



256

R-7b Two pisirs ab left-end of ball-court now (Facing court-end of road well shown at right. Hole tablets & blocks.



257

"Legs of Thron"



257

R-7-b - "2 pisirs ab Ball Court side, near R-7-a end."



260

Site 257



261

"R-76a upper face"



262

↑ ↑ ↑  
 R-76 Thru 200 S + R-76  
 lower face, badly  
 eroded in way shown;  
 note toolled edge"



37-2

Site of "Dog's Sting" - flat form  
T. annua  
R-9

263

(12.1.61)



37-2

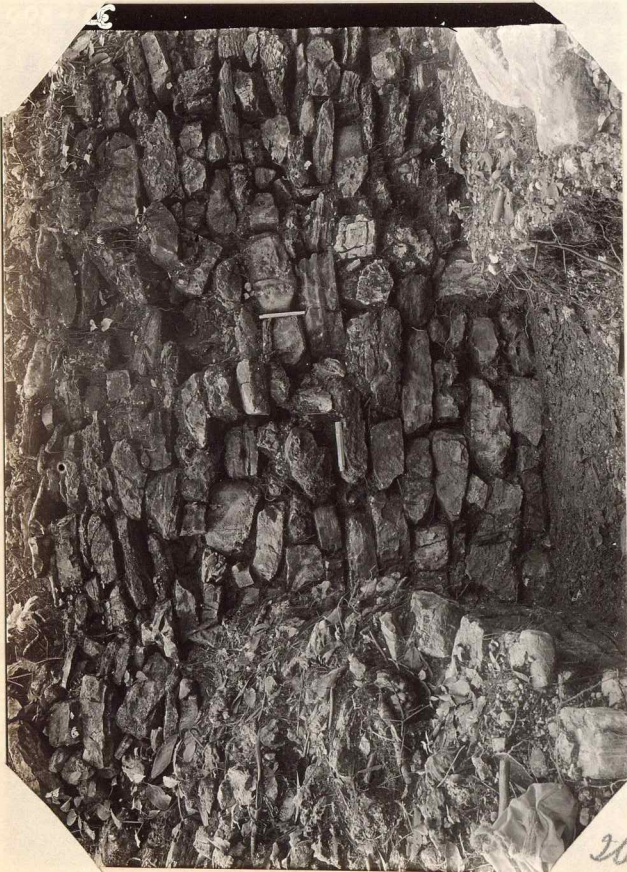
Site R-9

R-9



37-265  
MILBURN—MANNING—CODD

265



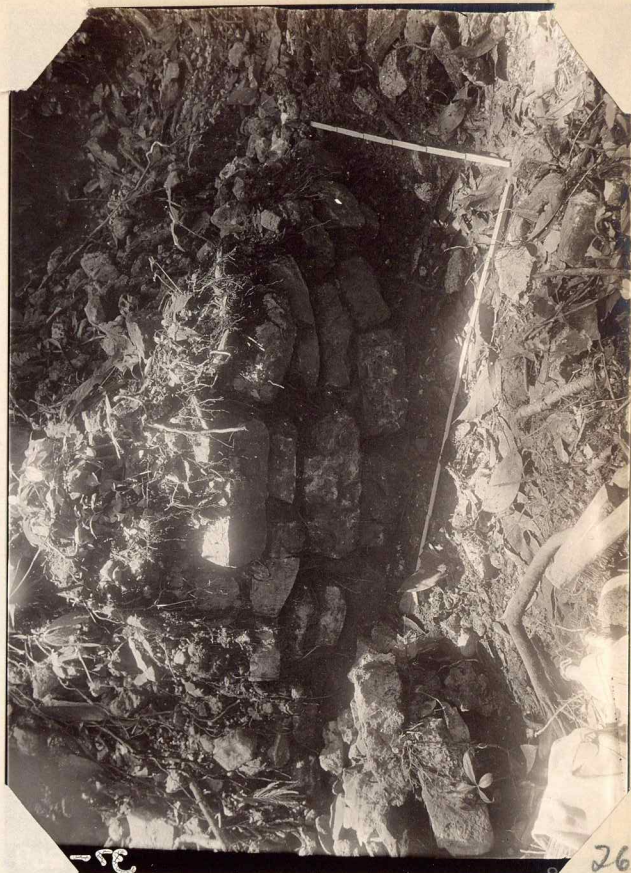
266



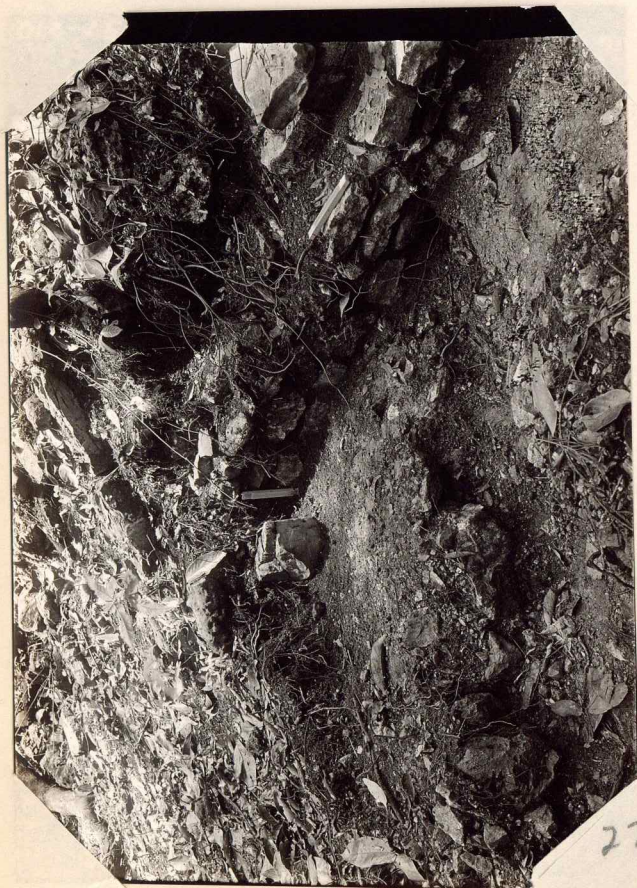
267



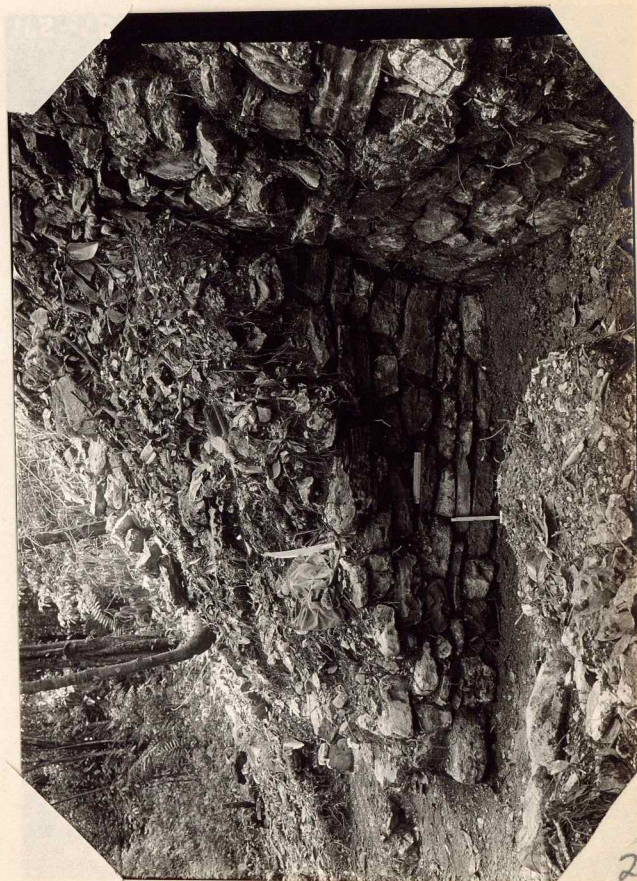
268



269



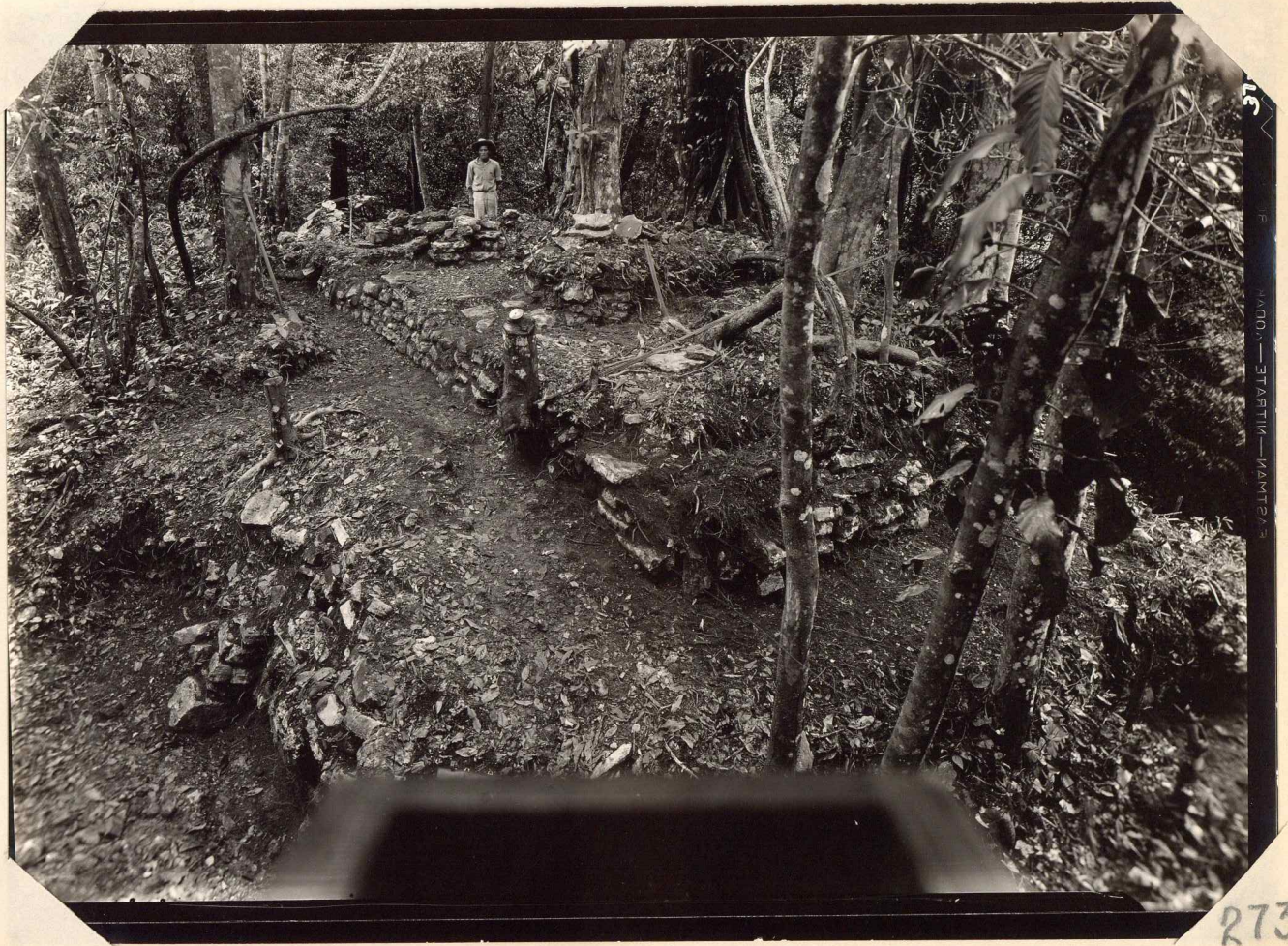
270



271



272



273



37-23  
MILLS FIELD STATION

274



37-24  
MILLS FIELD STATION

275



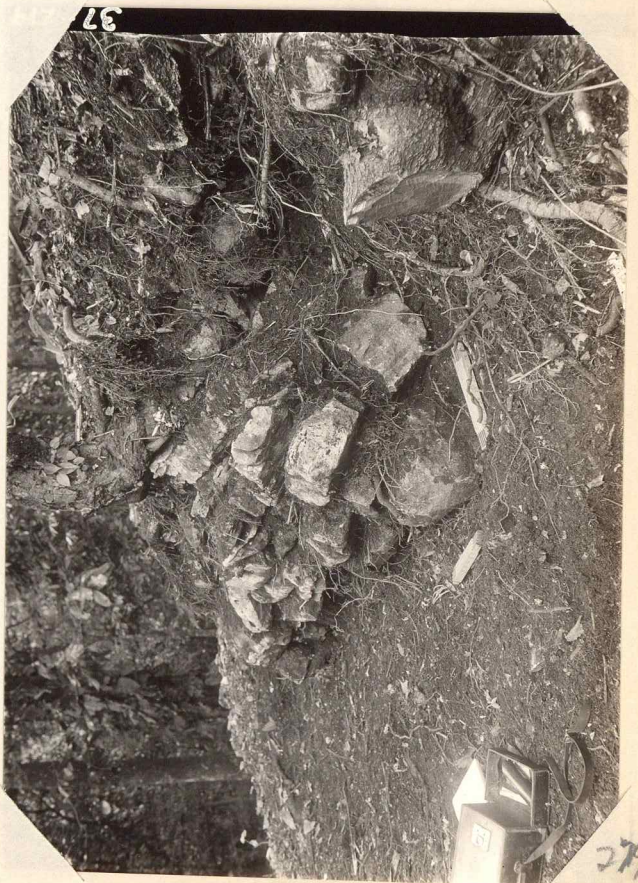
37-276



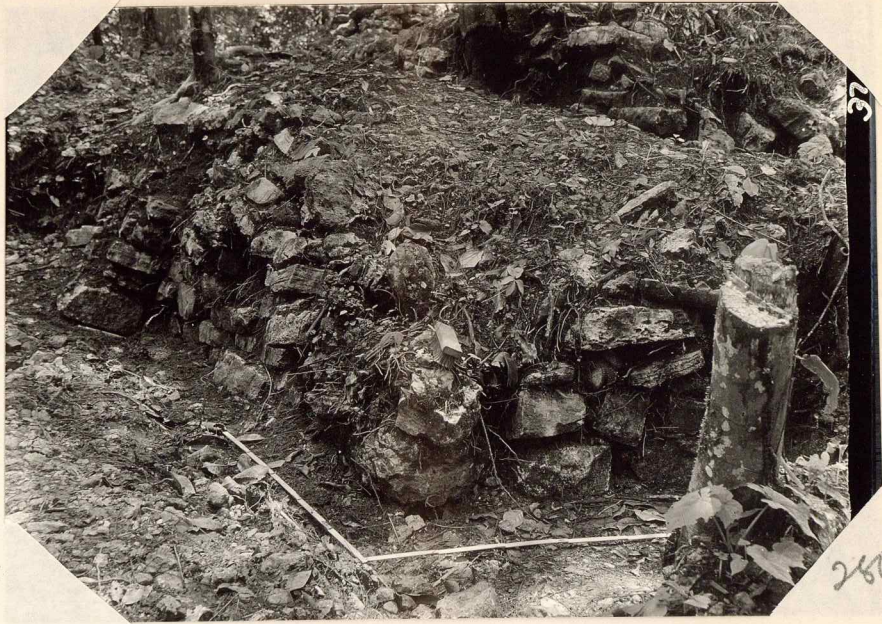
37-277



278



279



37

260



36

281



282



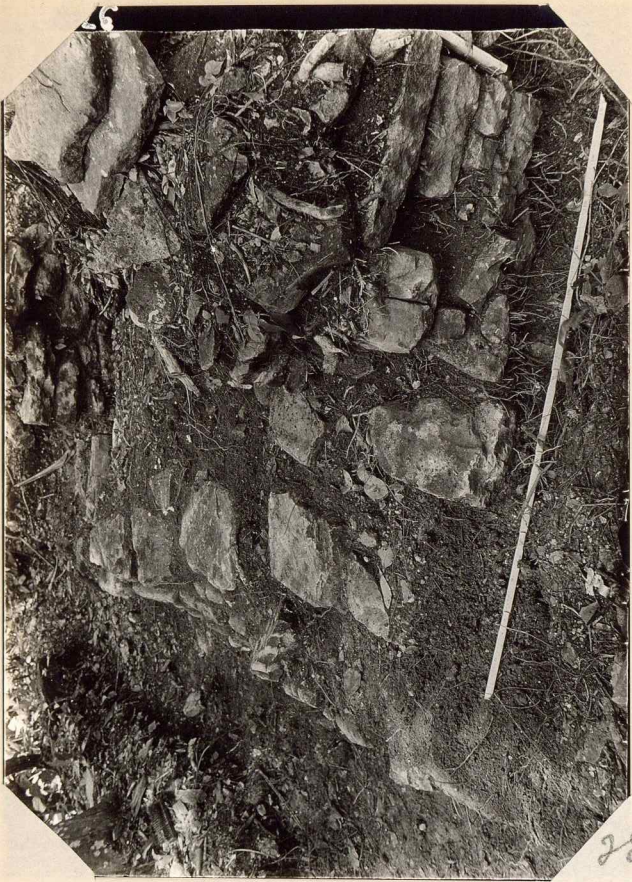
283

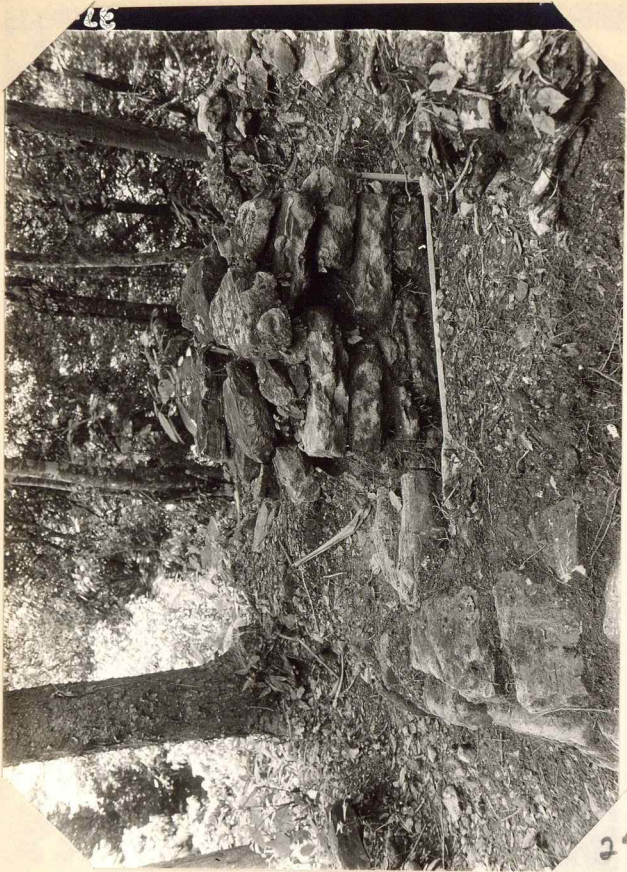


284

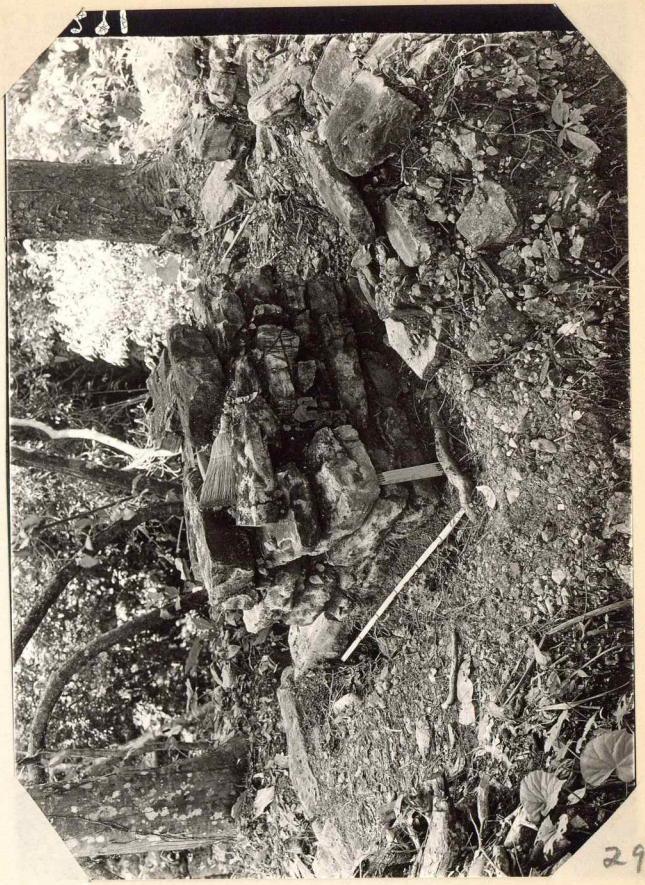


285





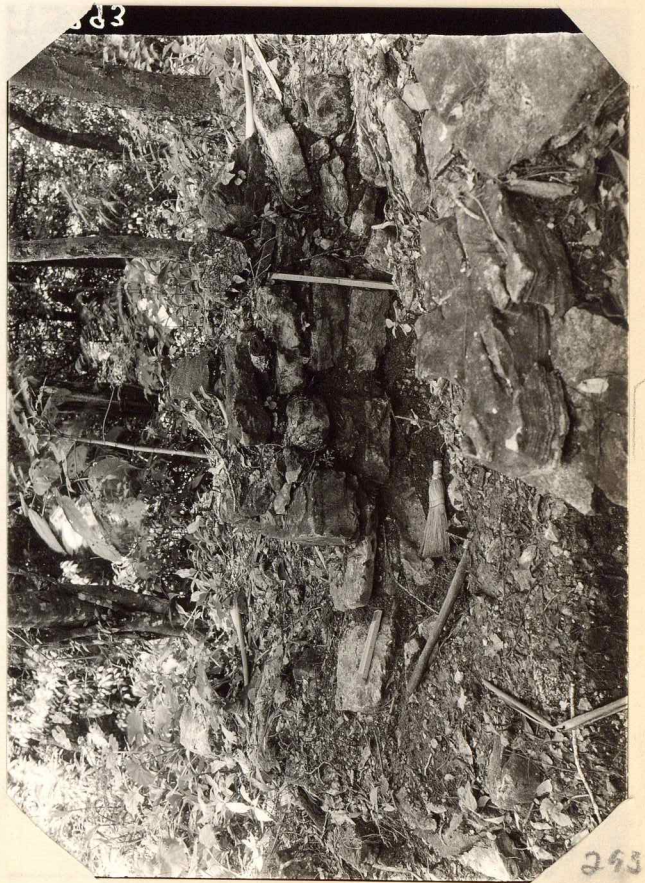
290



291



292



293

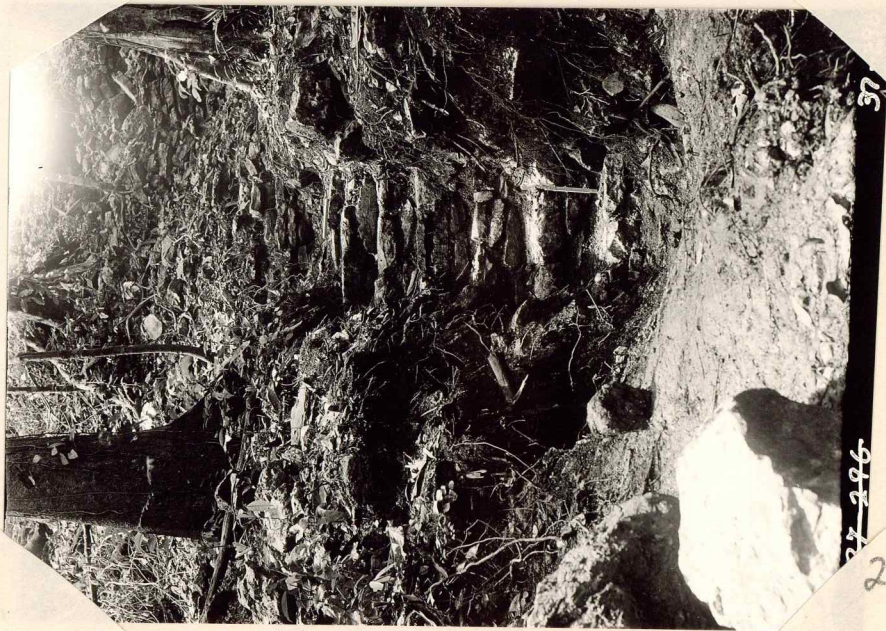


37-294



37-295

37-295



37

37-296

296



298