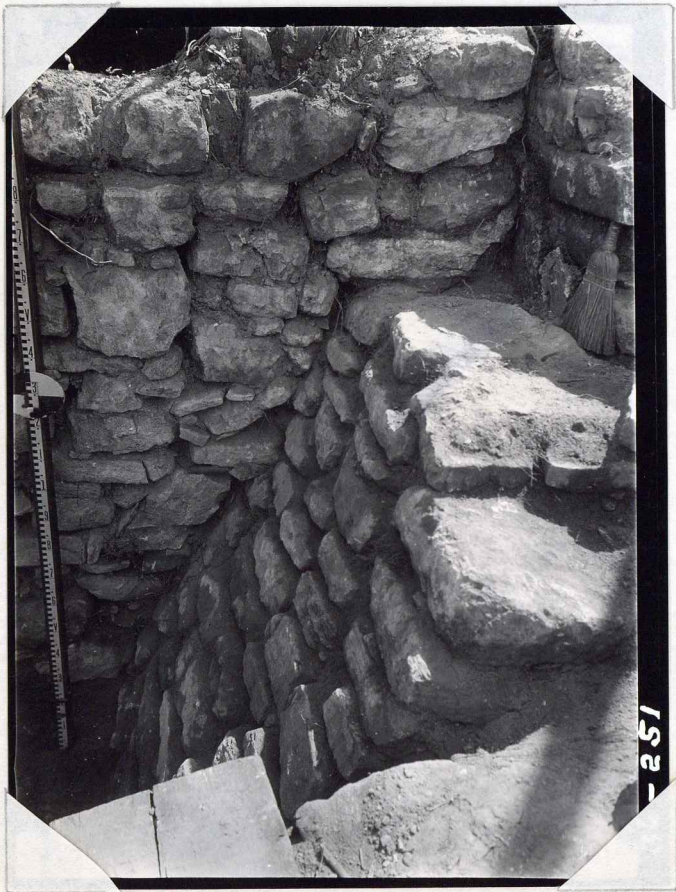




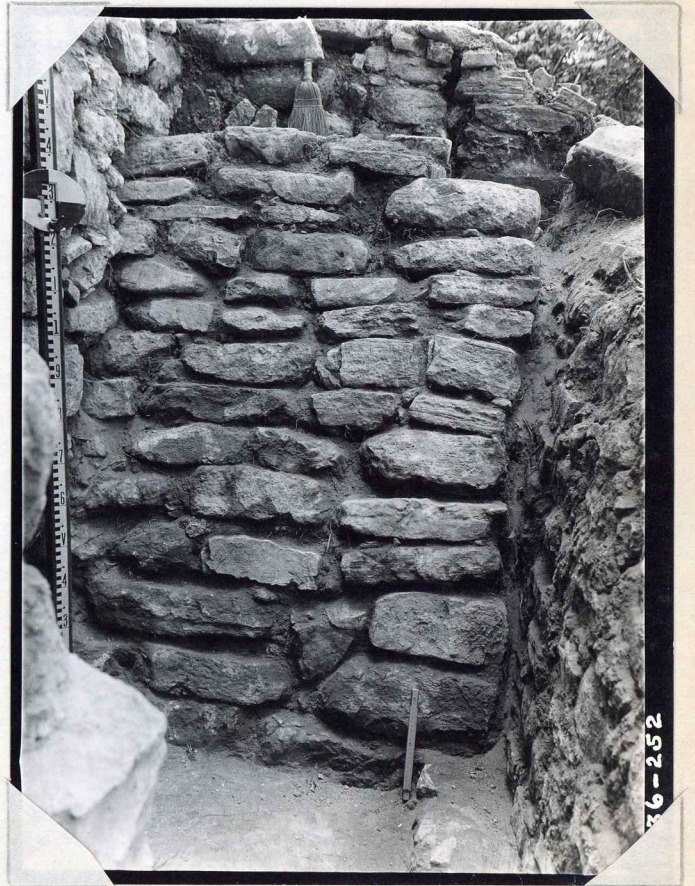
326

36-250



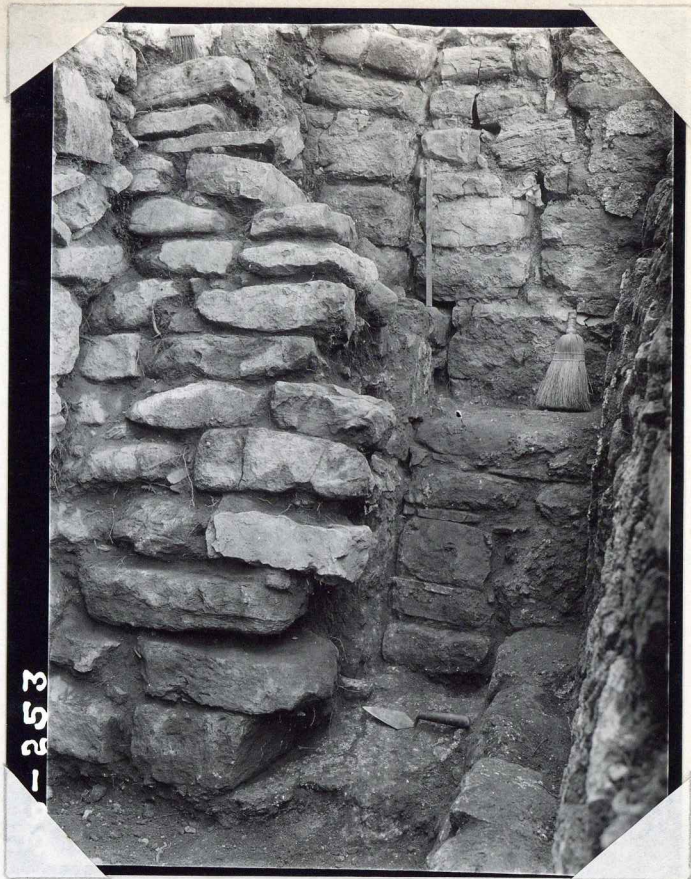
324

36-251



325

36-252



339

36-253



340

36-254



365

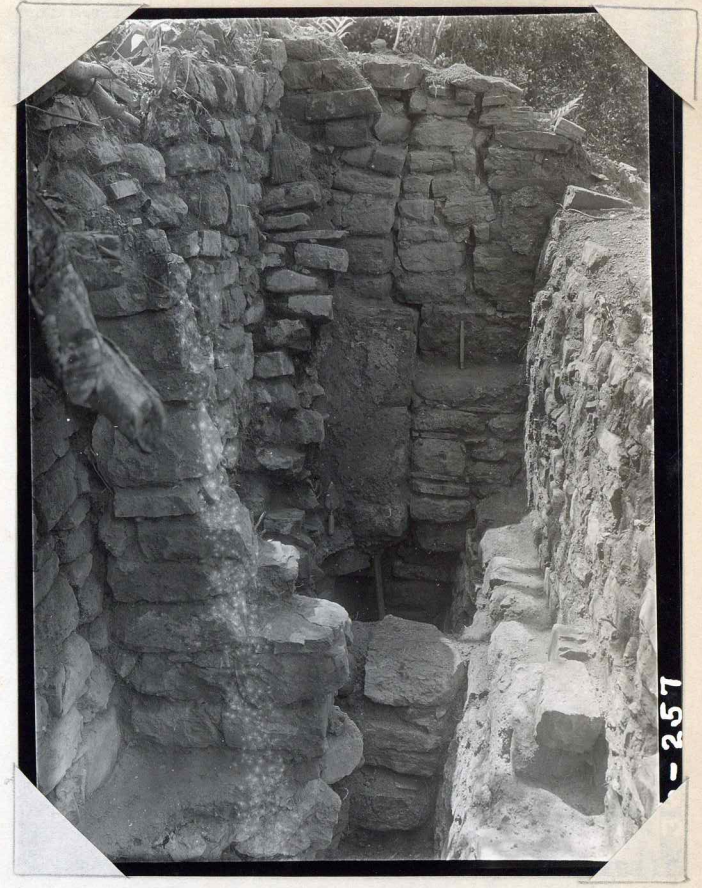
36-255



36-256

376

36-256



36-257

384

36-257



36-258

400

36-258



36-259

425

36-259



424

36-260

36-260



426

36-261

36-261





36-262

367

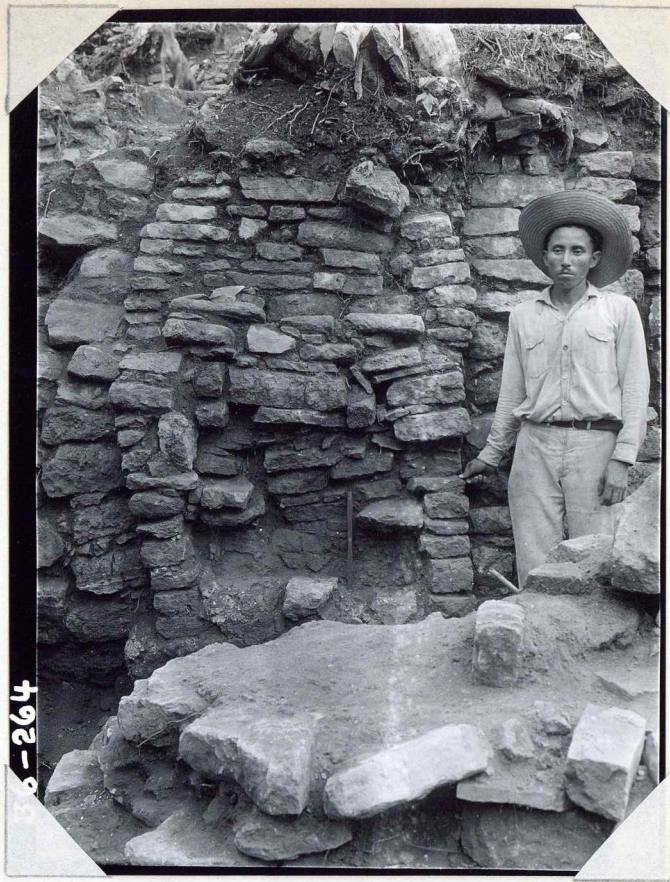
36-262



36-263

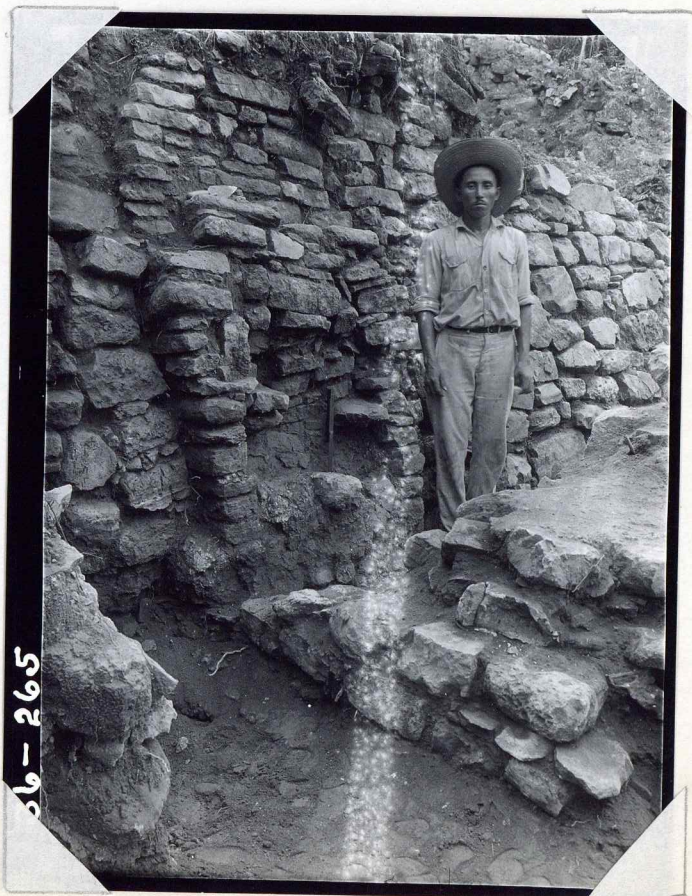
368

36-263



369

36-264



370

36-265



36-266

36-266

371



36-267

329

36-267



36-268

336

36-268



338

-269

36-269



357

36-270

36-270



353

-271

36-271



341

36-272

36-272



342

36-273

36-273



343

36-274

36-274



-275

36-275

373



6-276

36-276

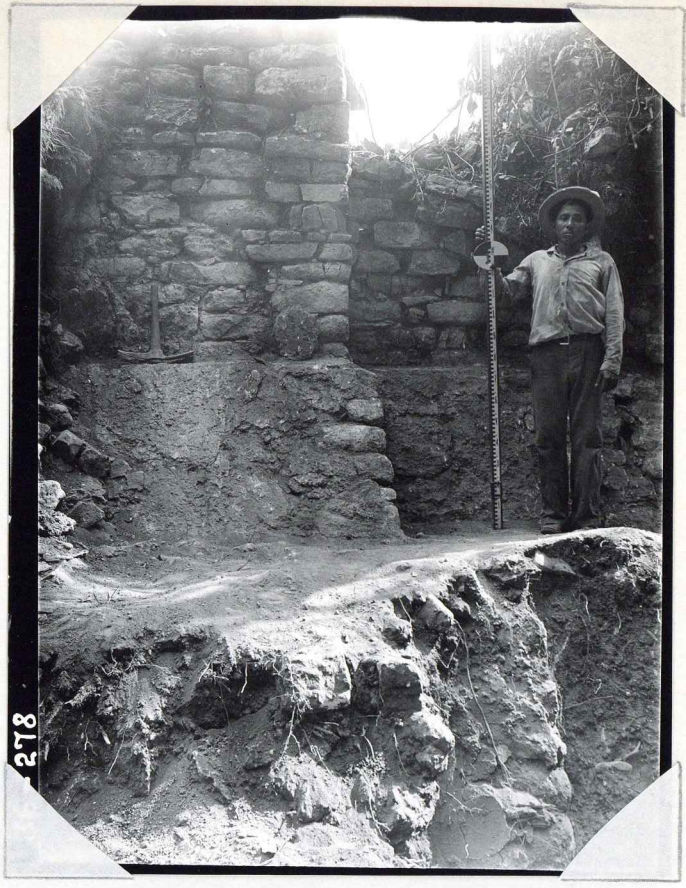
374



-277

36-277

375



278

330

36-278



279

332

36-279



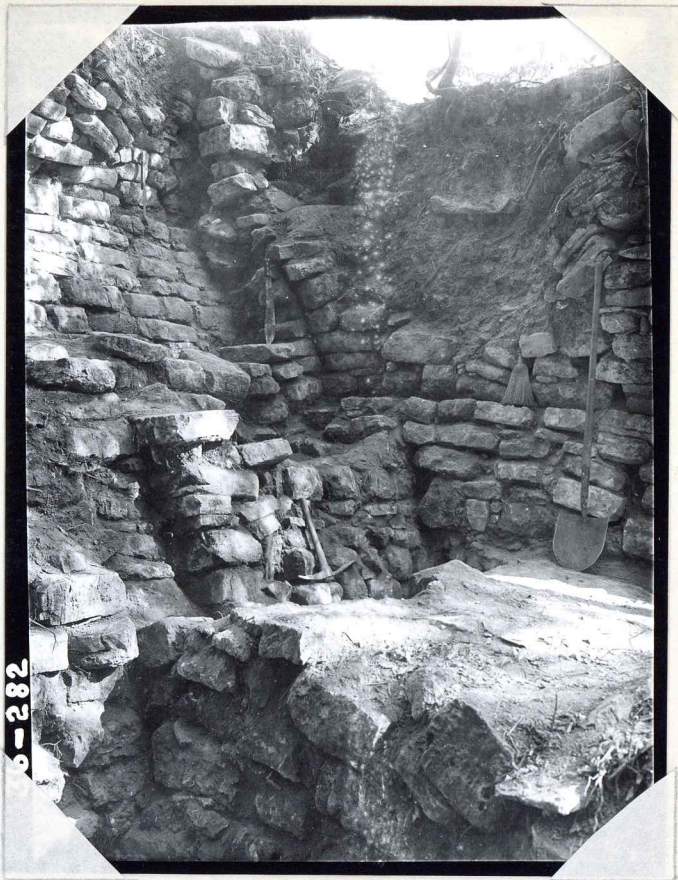
333

36-280



334

36-281



36-282

335-

36-282



36-283

372

36-283



377

36-284



285

323

36-285



328

36-286



6-287

331

36-287



36-288

36-288

350



58

395

36-289



-290

36-290

337



267

36-291

36-291

See next sheet for 36-292



268

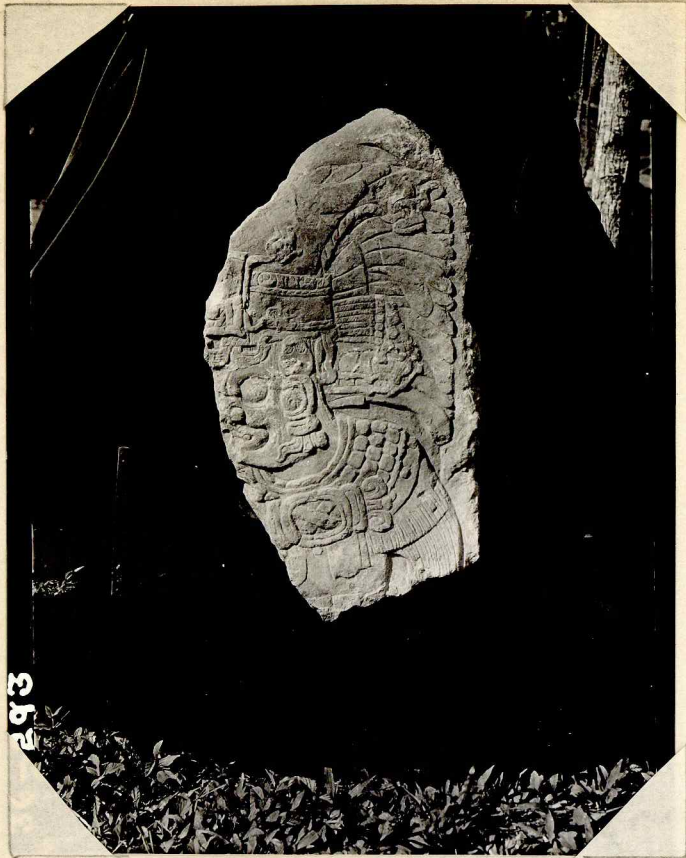
36-292

Miscellaneous Sculptured Stone #16



36-292

36-292



293

354

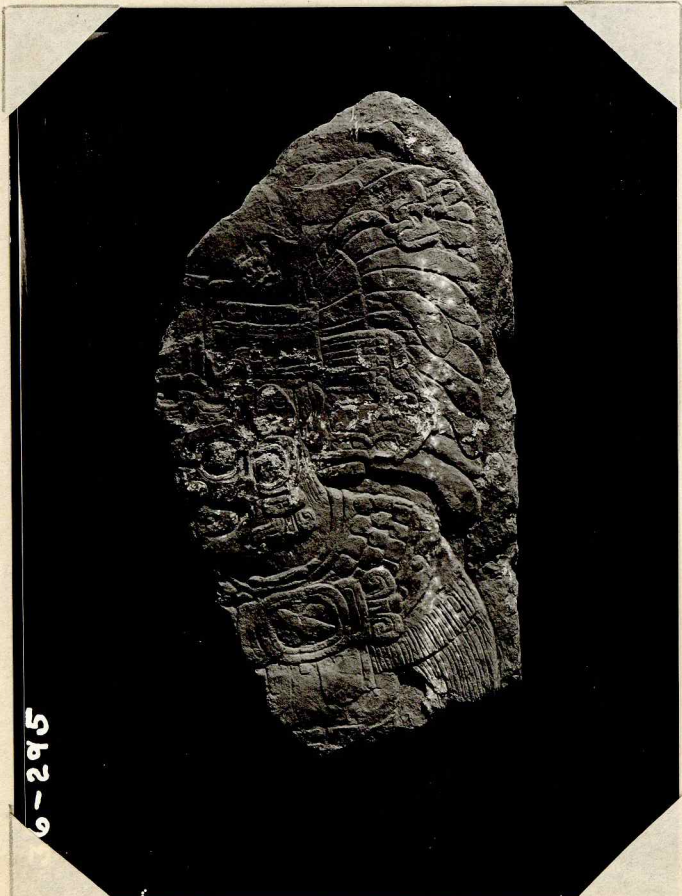
36-293



294

355

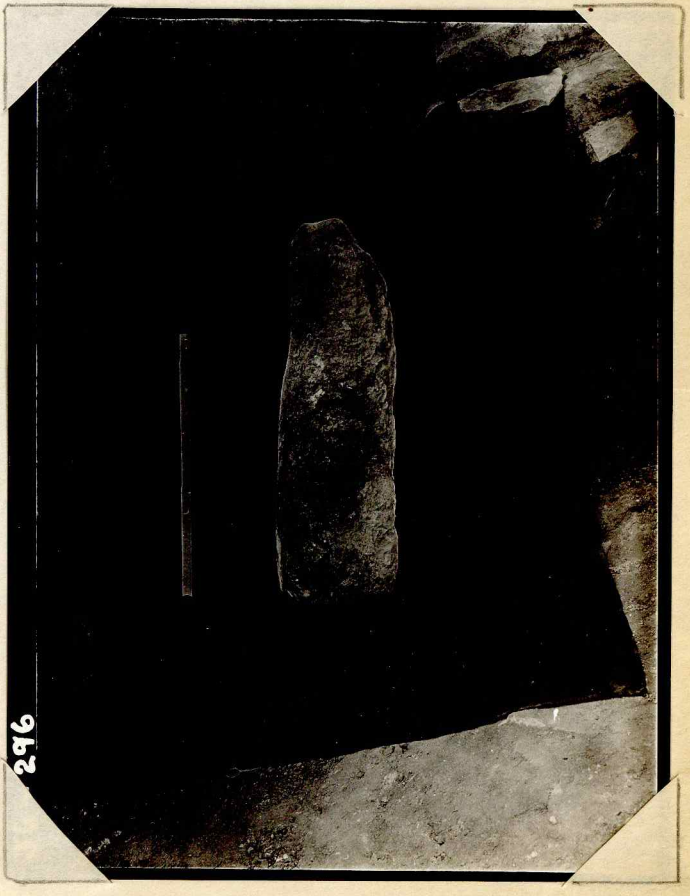
36-294



36-295

362

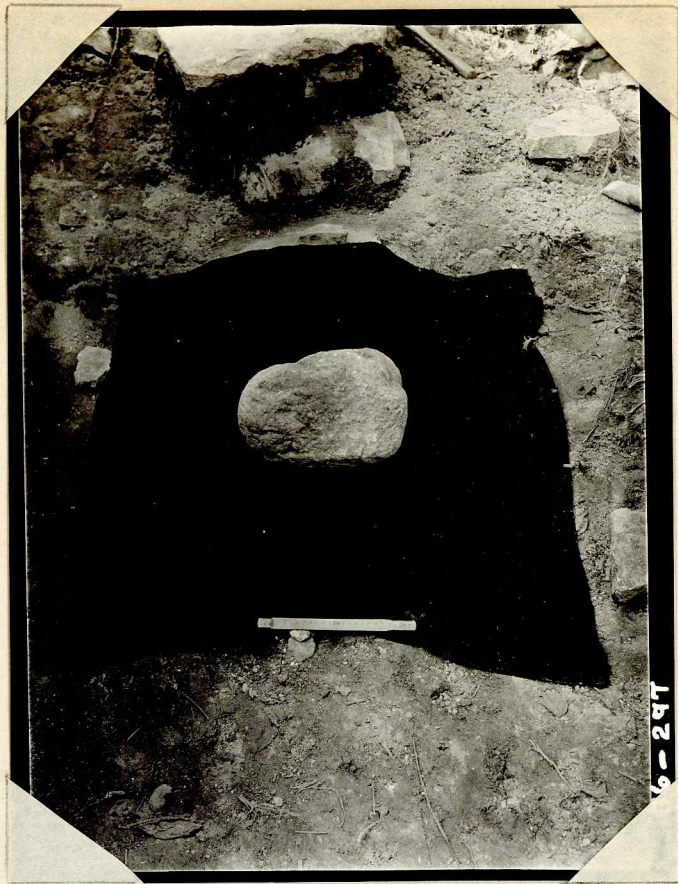
36-295



296

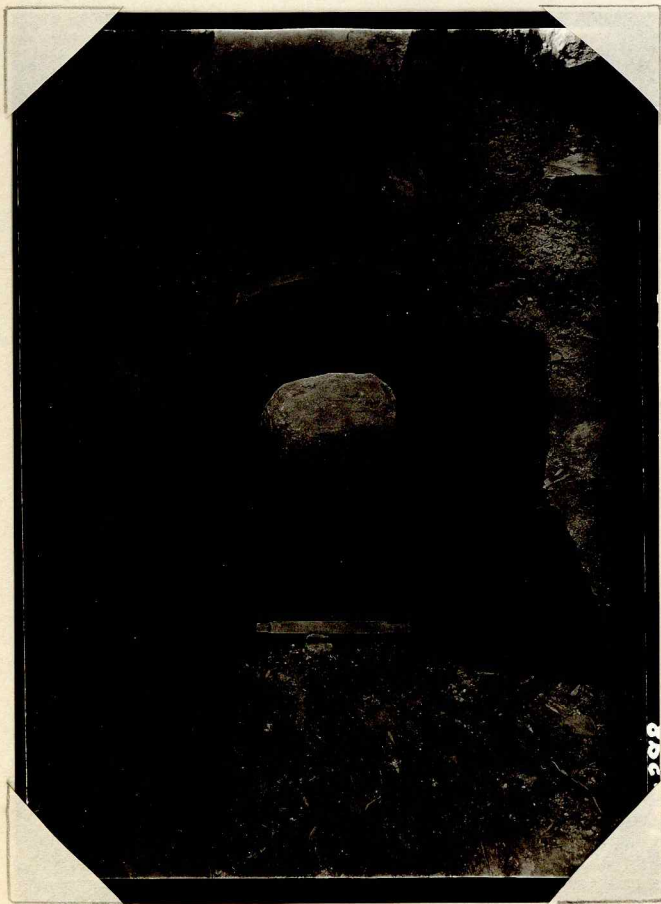
347

36-296



348

36-297



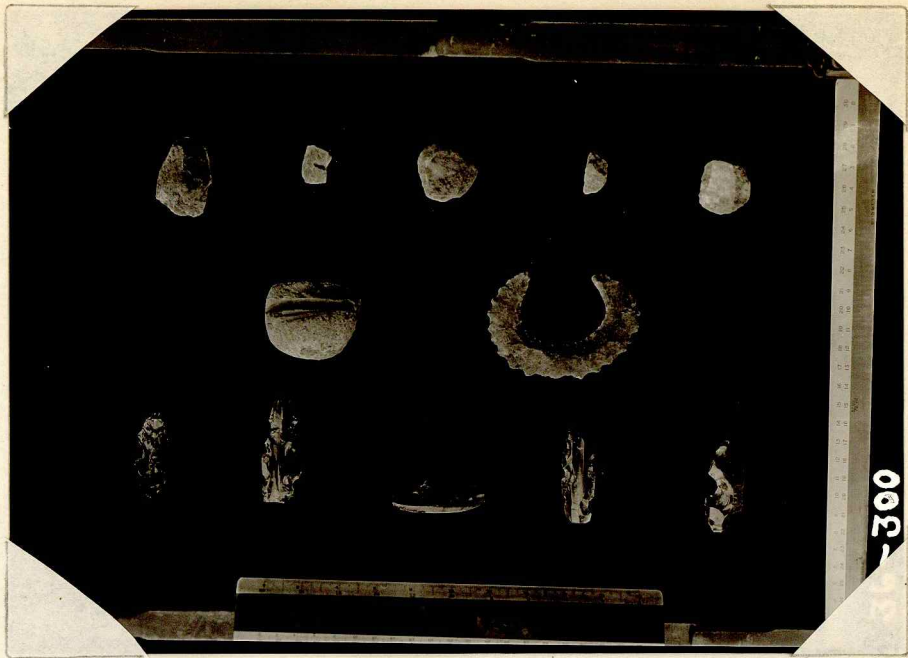
349

36-298



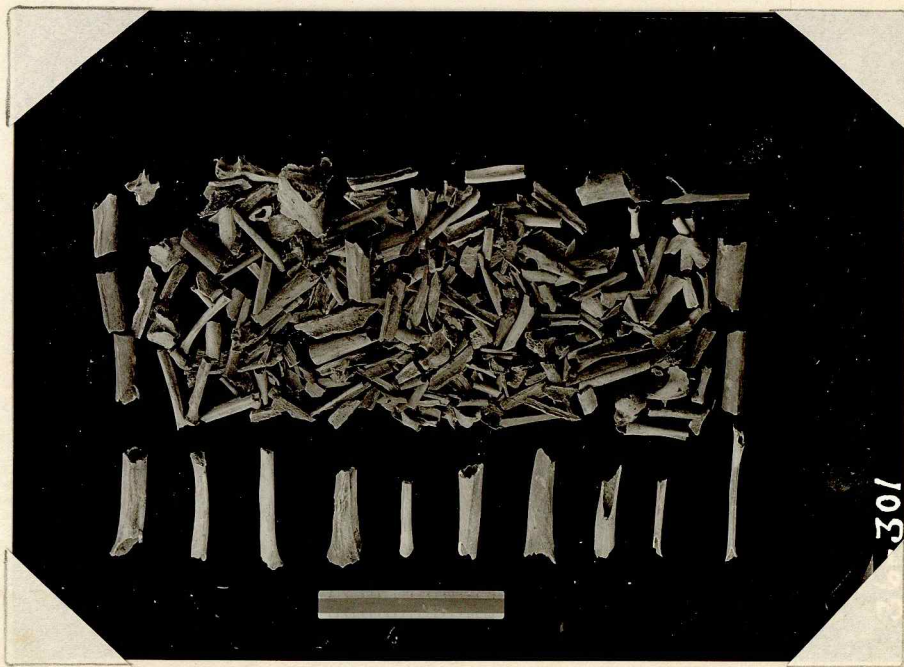
346

36-299



420

36-300



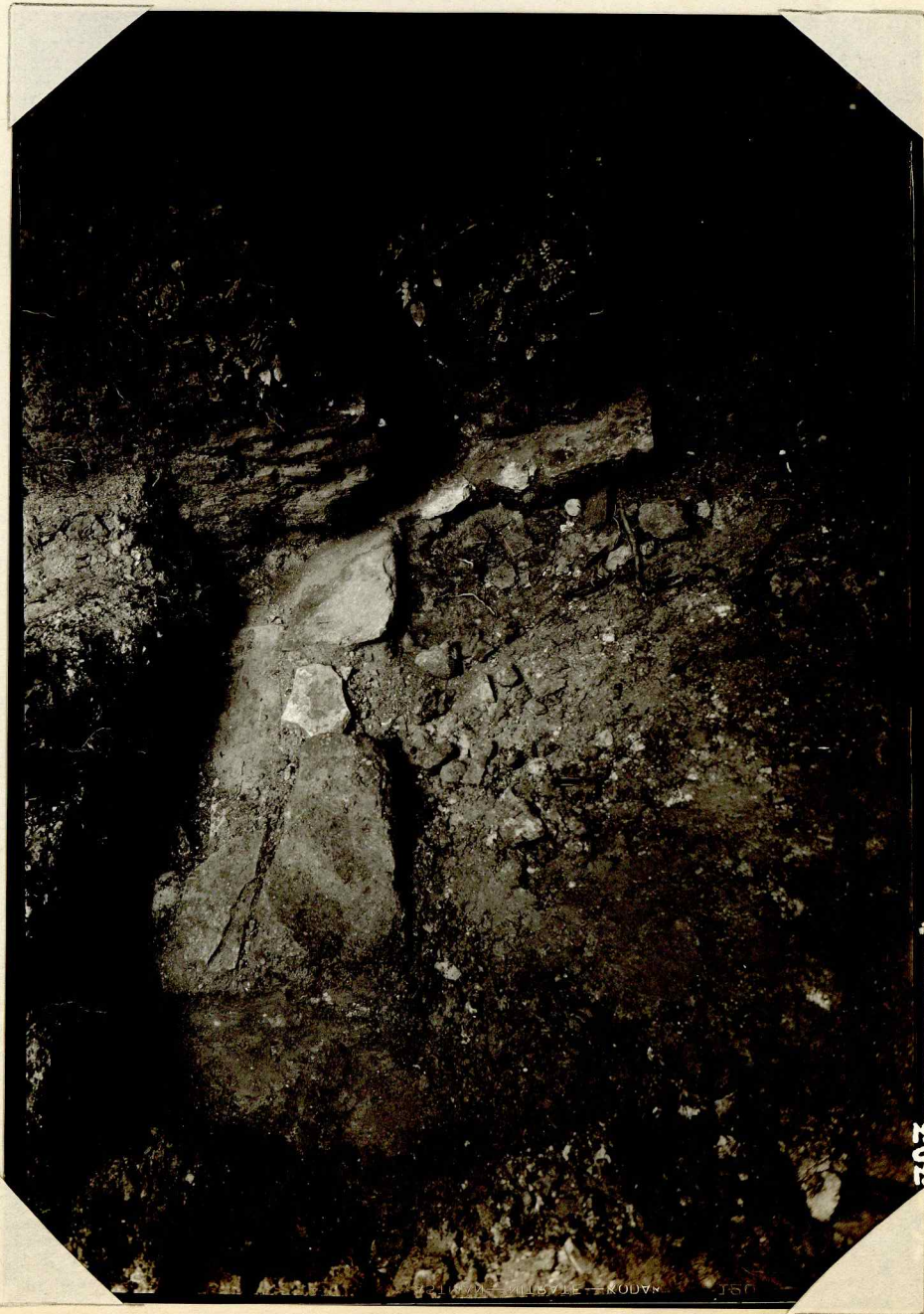
423

36-301



431

36-302



432

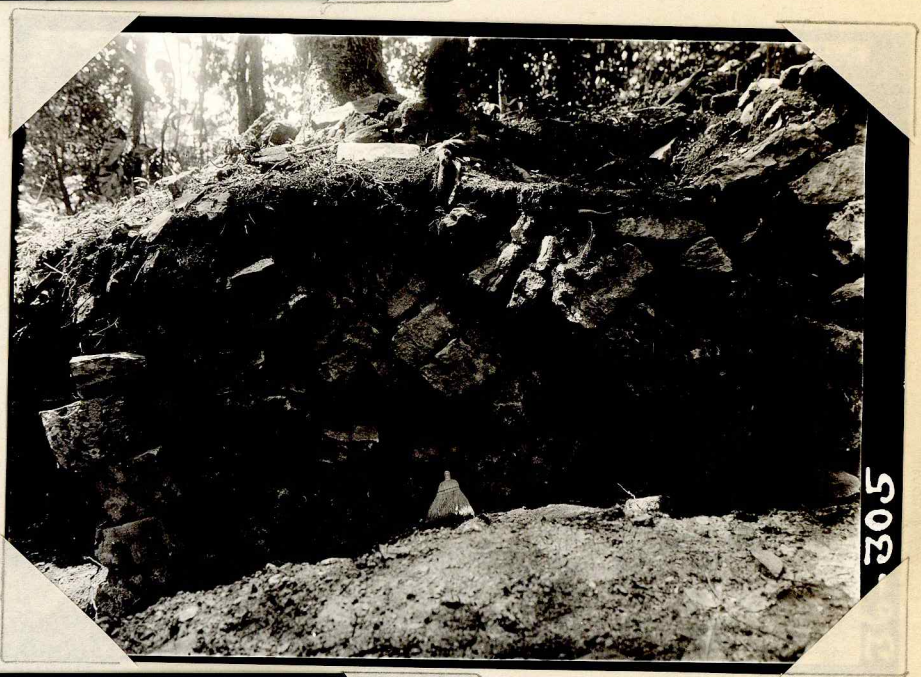
36-303



304

36-304

352



305

356

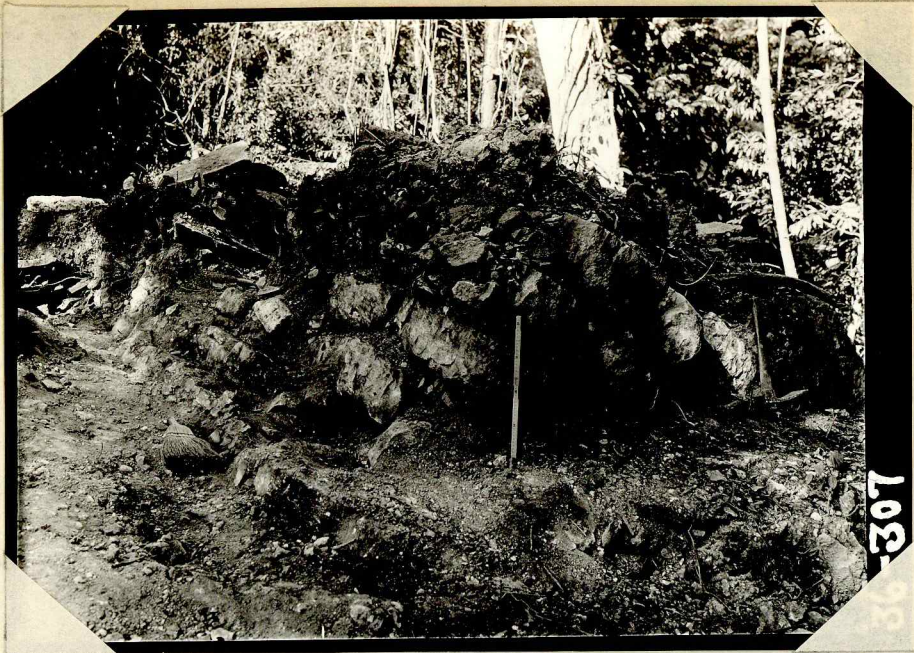
36-305



306

358

36-306



36-307

36-307

360



802-308

410

36-308



36-309

359

36-309



361

36-310

36-310



357

36-311

36-311



150

— KUDVI — VILIS / 12 —

36-312

140

36-312



150

36-313

141

36-313



36-314

142

36-314



36-315

143

36-315



144

36-316

36-316



250

36-317

36-317



318

138

36-318



319

139

36-319



401

36-320



402

36-321



413

36-322



411

36-323



412

36-324



17505  
36-325

36 325

~~143~~ 143

v7505



414



36-325



36-326

403

36-326



36-327

404

36-327



36-328

17508



409



36-328

17508



408



36-329

owd to orig. Text (Sdrs-17)



407

36-330



36-331

36-331



331

406

36-331

17511



36-332

REVERSE FILM

203

36-332



36-333

204

36-333

36-334



205

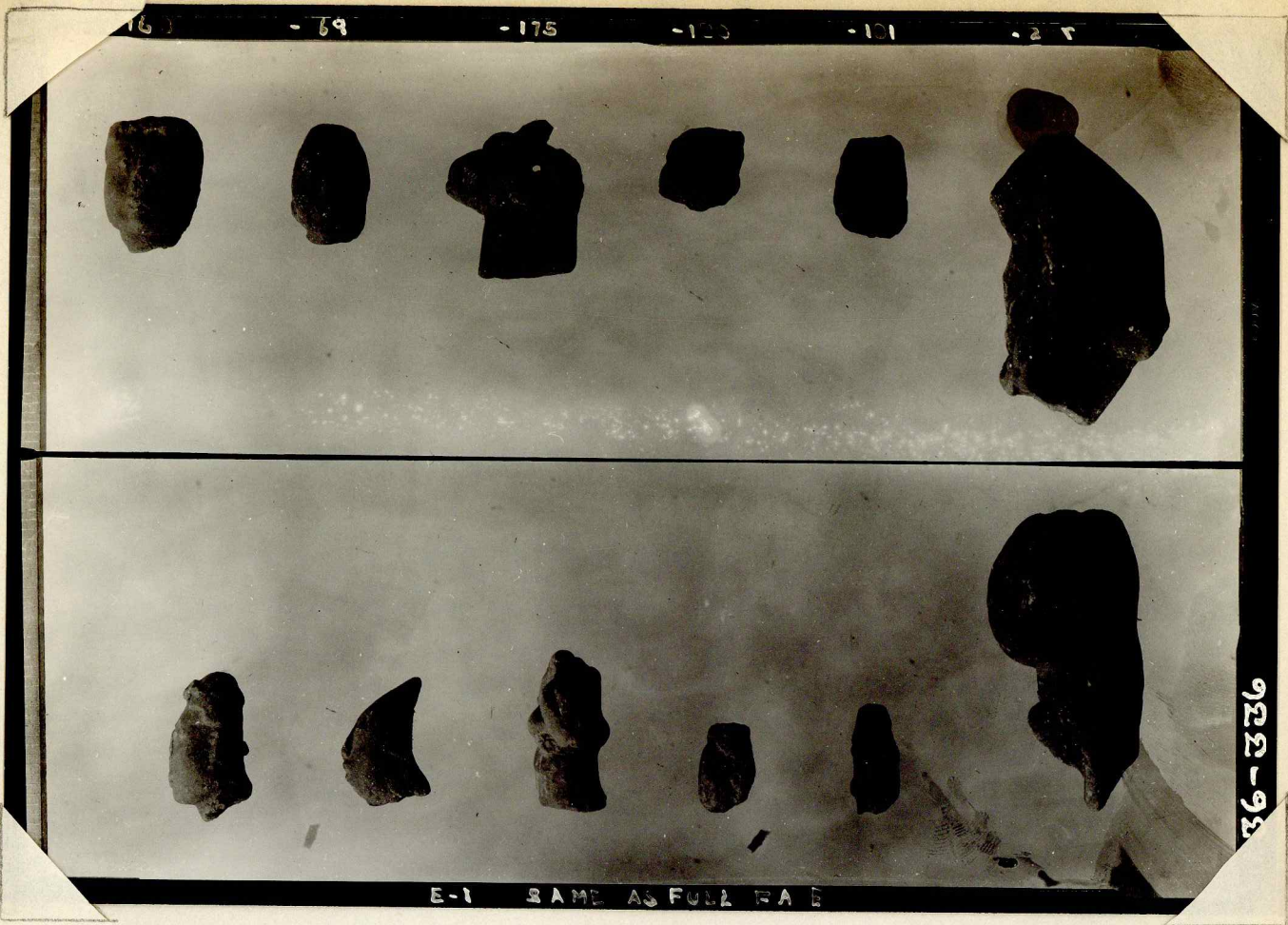
36-334



251

36-335

36-335



16 - 69 - 175 - 100 - 101 - 27

E-1 SAME AS FULL FACE

36-336

253

36-336



4-42 - 41 10 - 32

NE-4 SAME AS FULL FACE

36-337

254

36-337

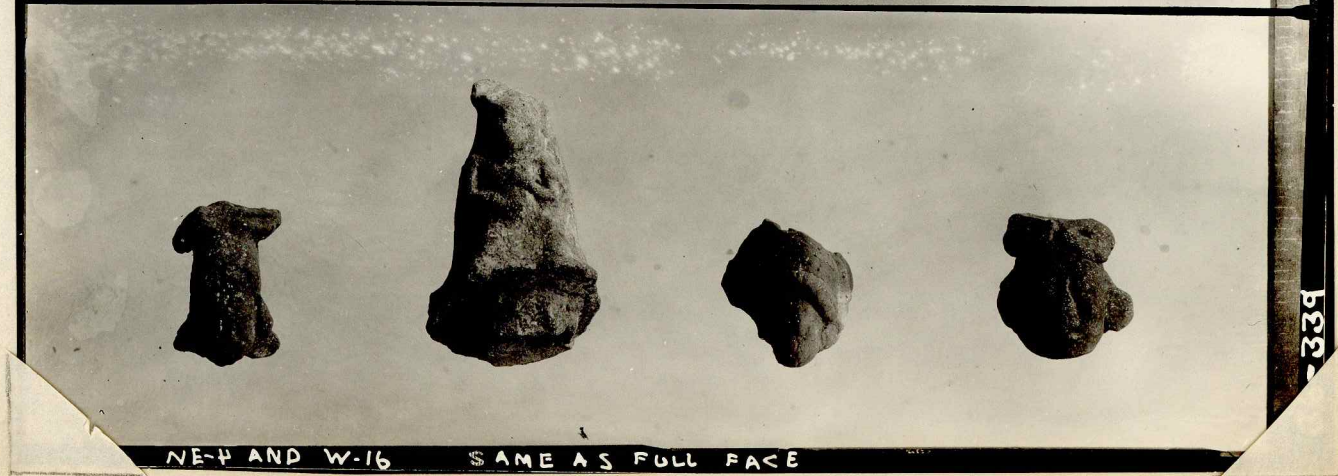
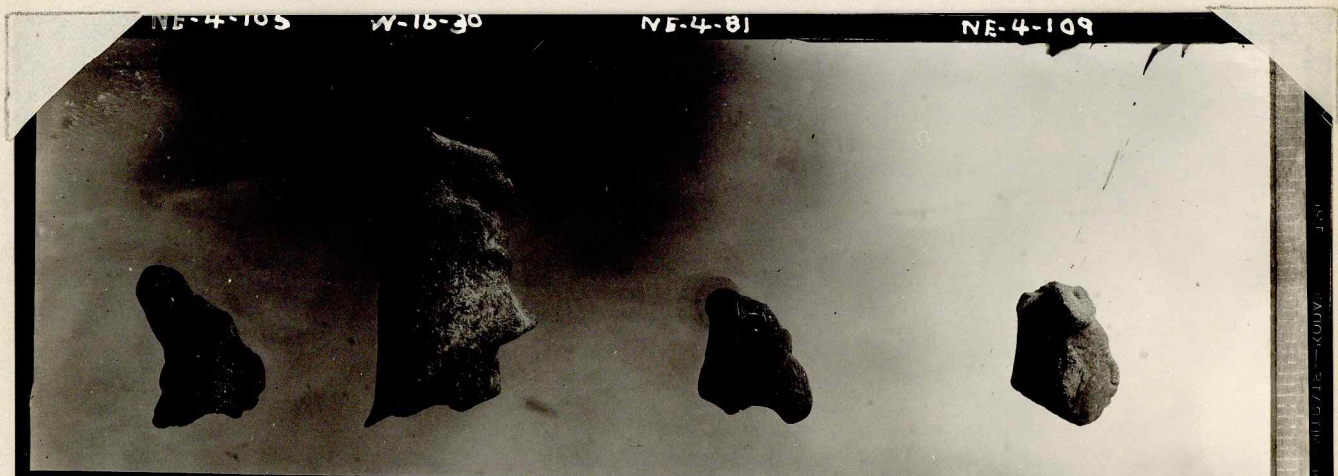


255-

36-338

E-4 SAME AS FULL FACE

36-338



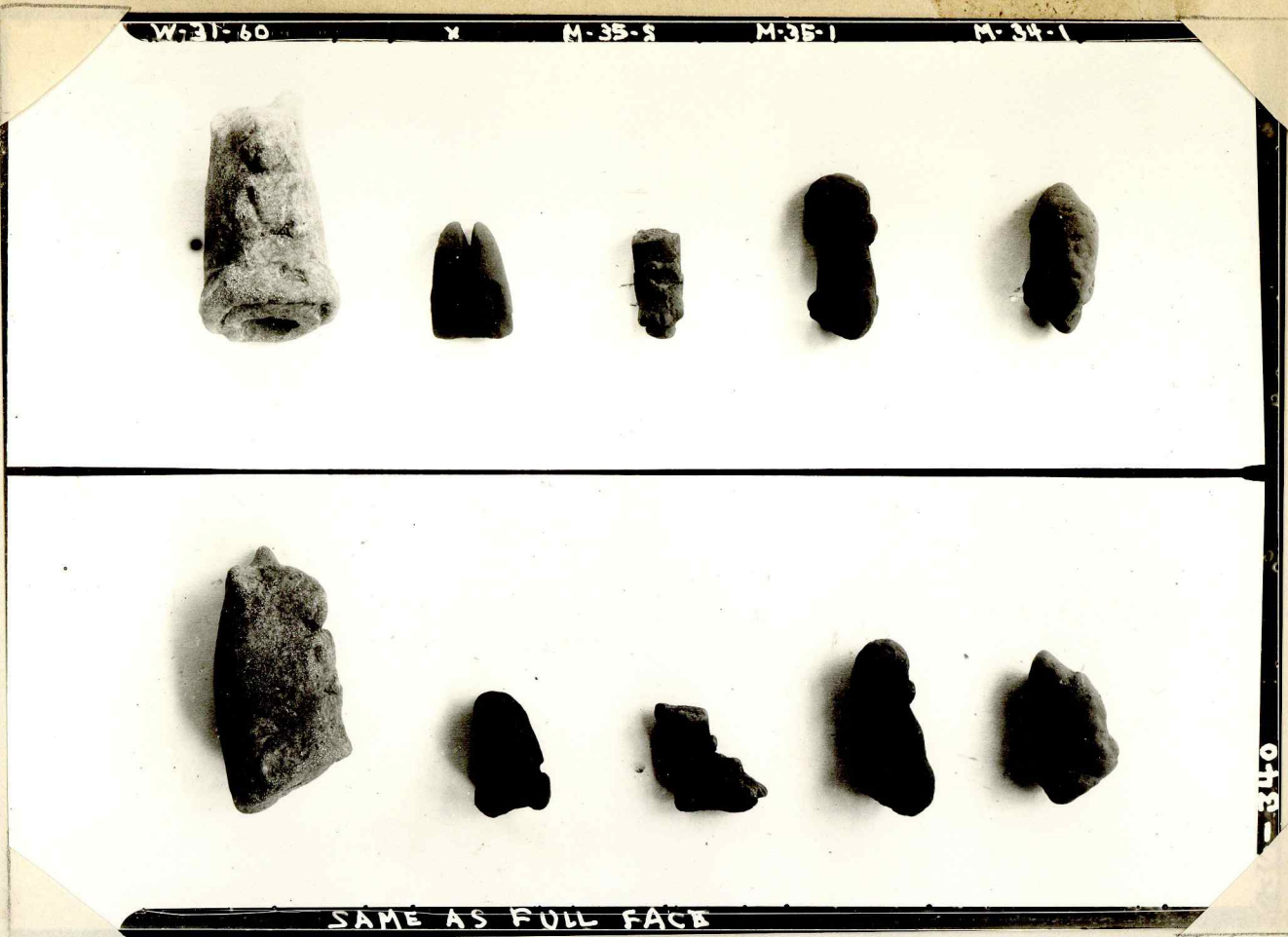
256

36-339

NE-4 AND W-16 SAME AS FULL FACE

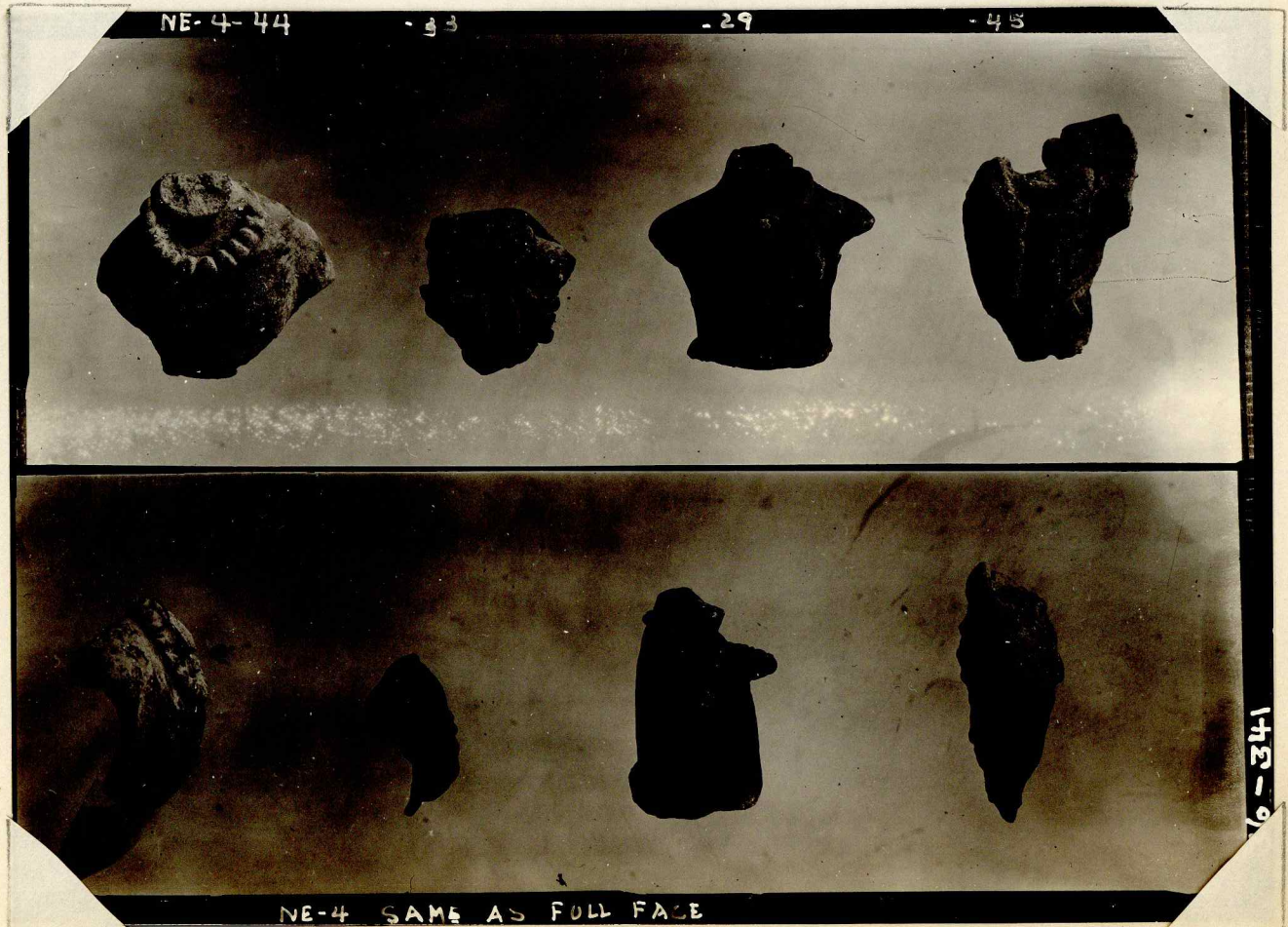
36-339

NE-4-105 W-16-30 NE-4-81 NE-4-109



261

36-340



257

36-341

340

341



258

36-342



259

36-343



260

36-344

NE-4-51

W-8-46



279

36-407

Note: This print is repeated in  
 proper order under JONUTA, fig. + sheet at  
 top of P. Negras.



266

36-345

36-345  
SE-11  
W-34  
U-35  
D-1  
W-34  
SE-11

36-345



36-346

269

36-346



36-347

270

36-347



36-348

265 Top row: w-16-19 w-16-19 E-1-196 E-1-194 E-1-196 w-16-23 36-348  
 Mid row: ? E-1-194 ? W-16-25 W-16-21 checked nos. and  
 Bot row w-16-24 ? S-17-13 E-1-185 shown in drawings.

36-349  
 Missing

Stucco fragments - Crosson failed to  
 w-16-21 e numbers. Film is missing (Cop. 1936) w-16-19  
 w-16-21 w-16-24 ? E-1-194 36-349  
 E-1-185 S-17-13 ? w-16-24

?

L-79-207

E-1-72

z

L-79-211



L-79-209

L-79-208

?

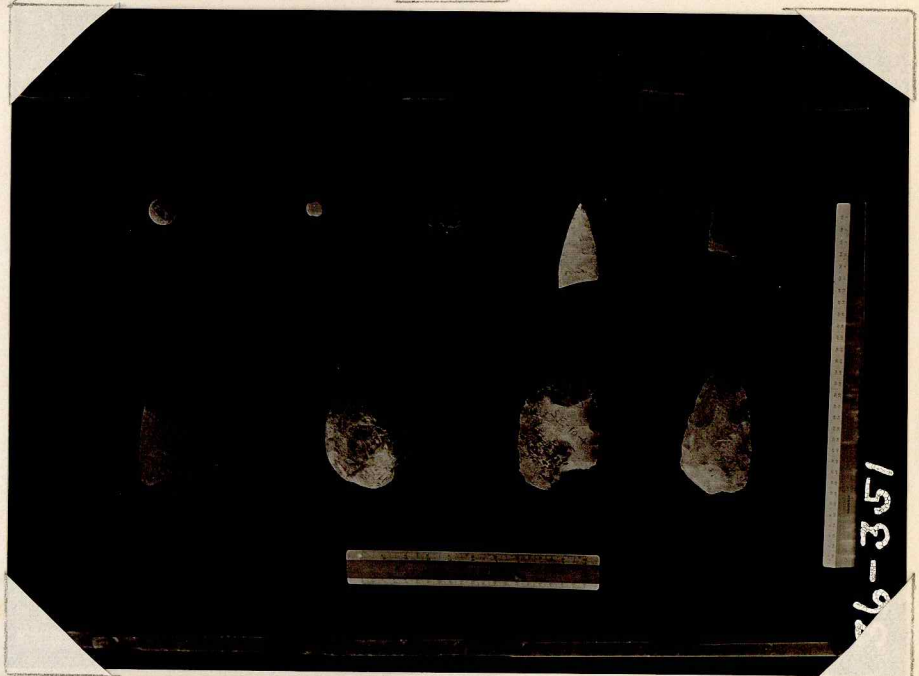


36-351



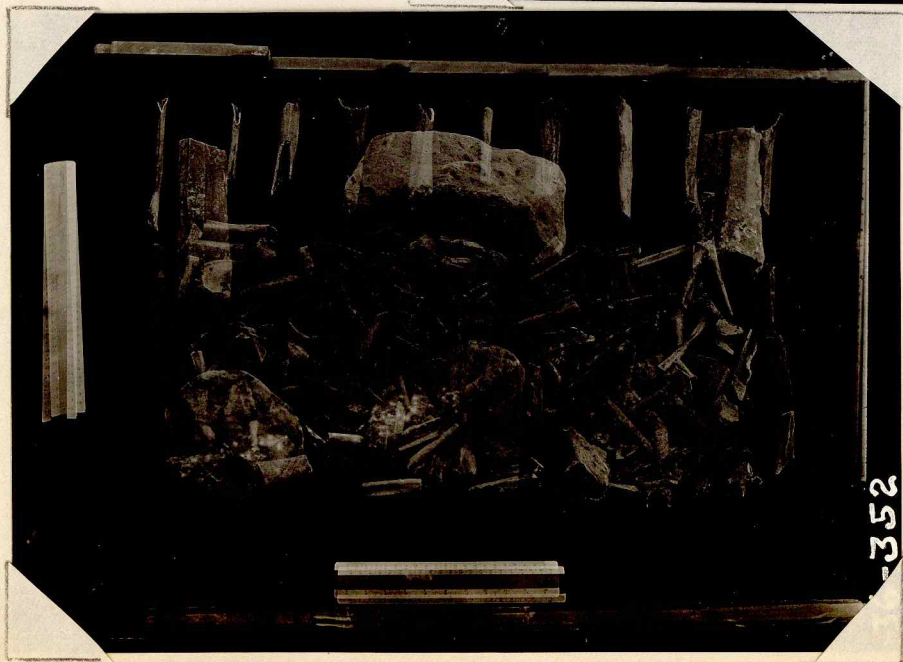
36-350

421



419

36-351



422

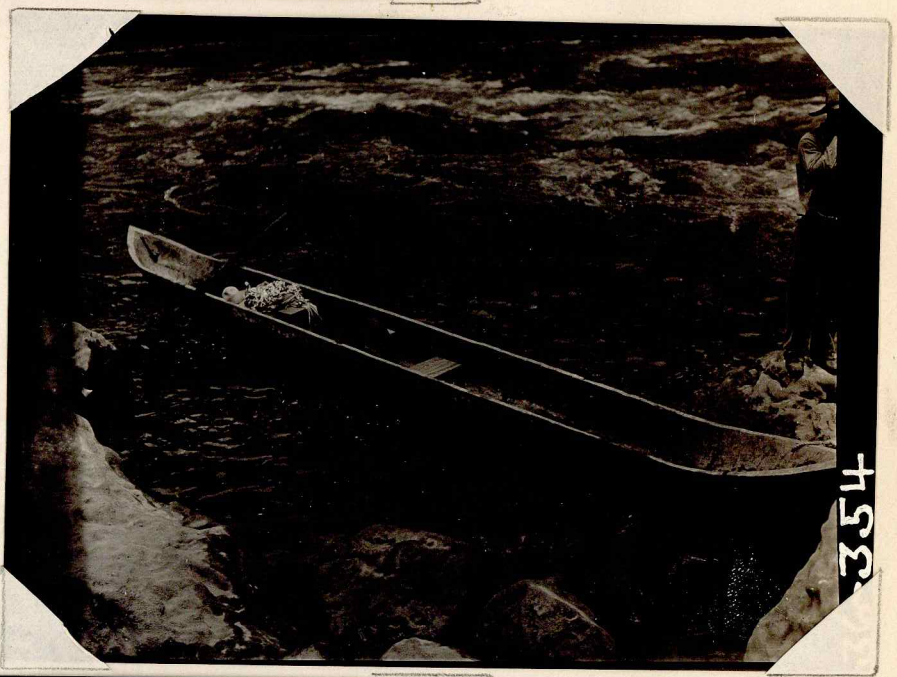
36-352



36-353

36-353

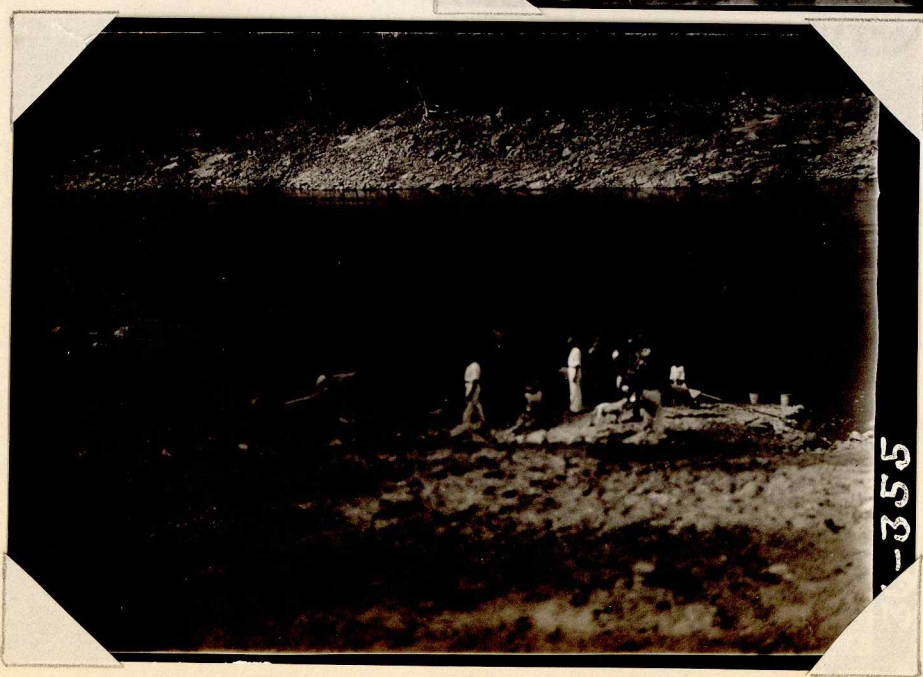
104



36-354

103

36-354



36-355

34

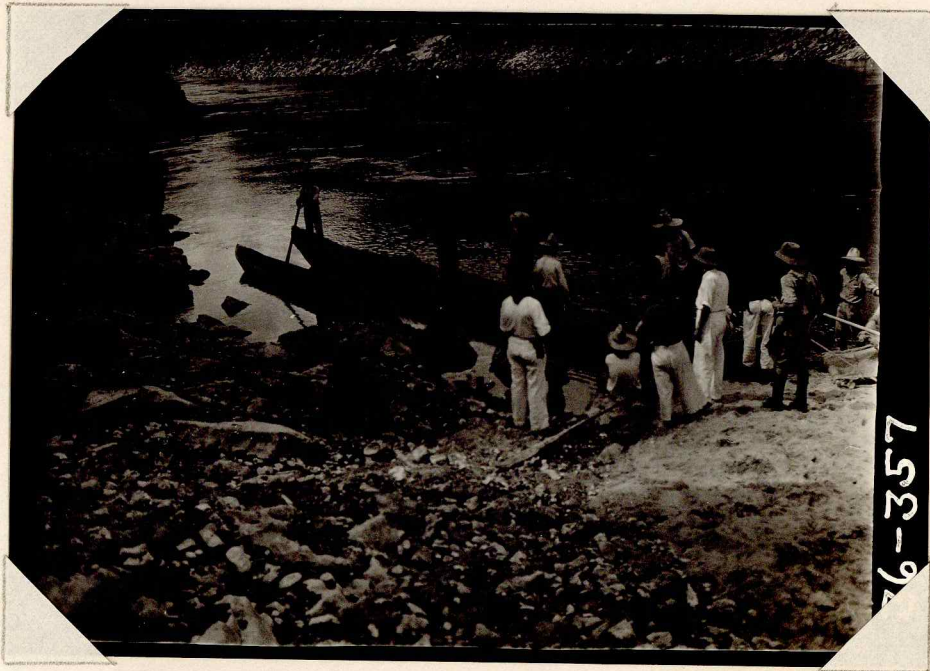
36-355



36-356

37

36-356



36-357

35-

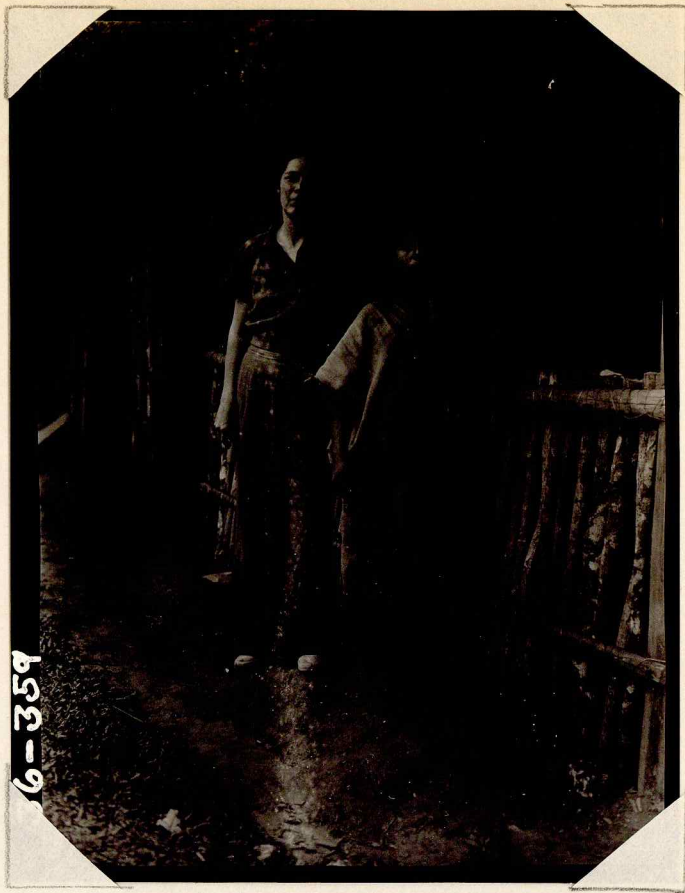
36-357



38

855-358

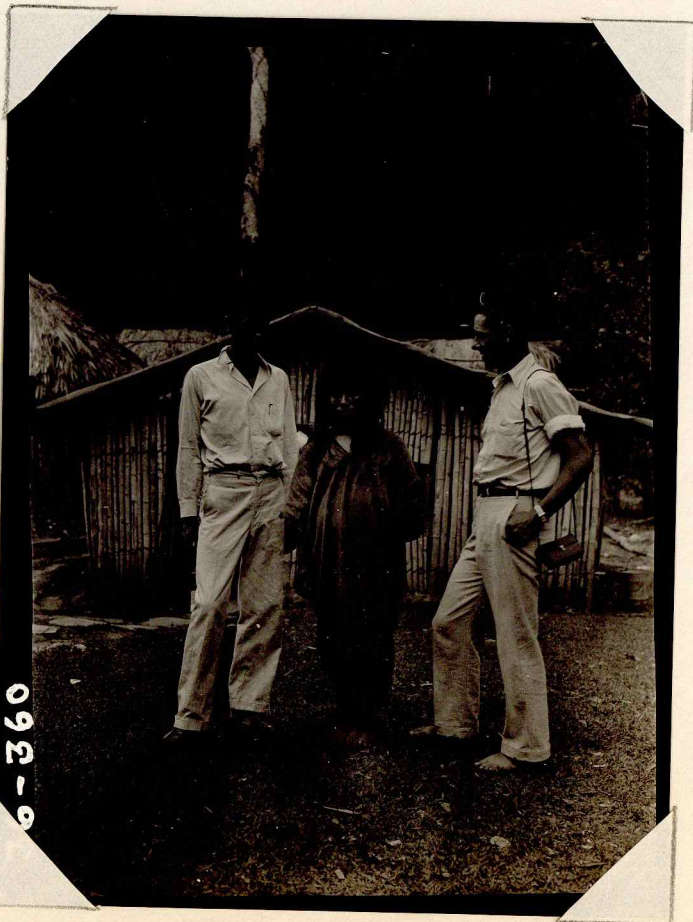
36-358



28

36-359

36-359



29

36-360

36-360



36-361

36-361

59



-362

60

36-362



36-363

36-363

61



36-364

62

36-364

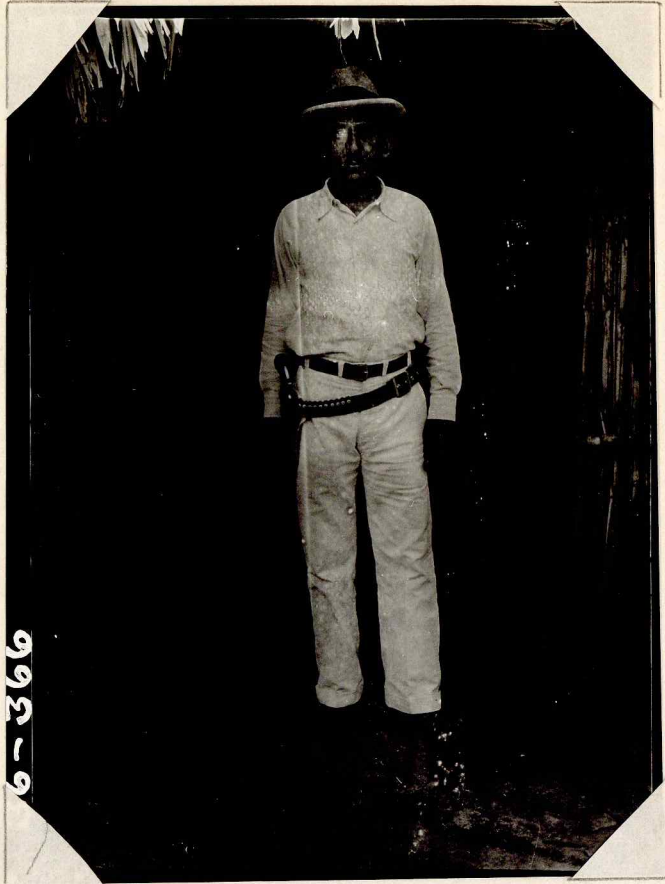


36-365

63

36-365

*[Handwritten red scribble]*

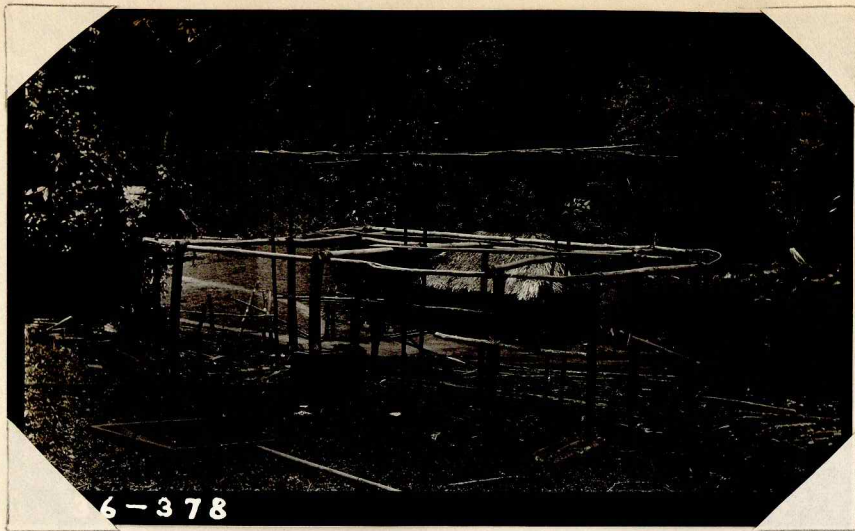


6-366

252

36-366

367-377 are not included here.



6-378

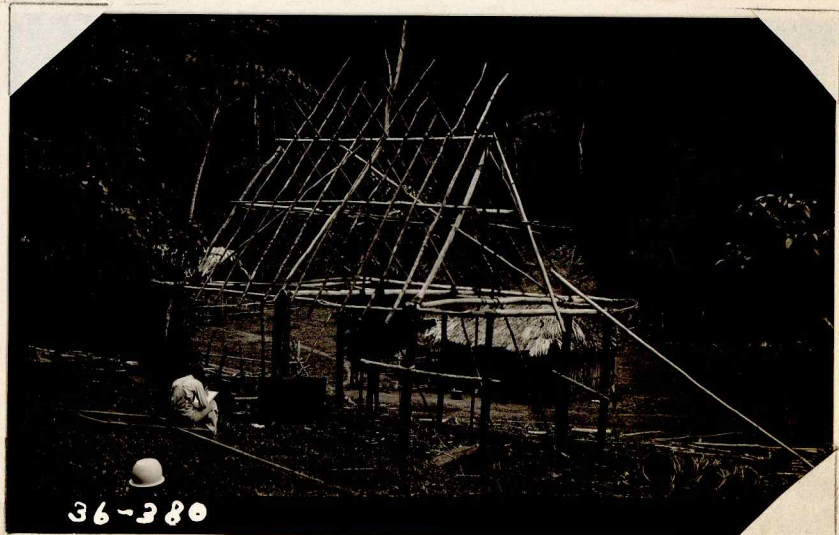
36-378



6-379

36-379

17557



36-380

36-380



381

36-381



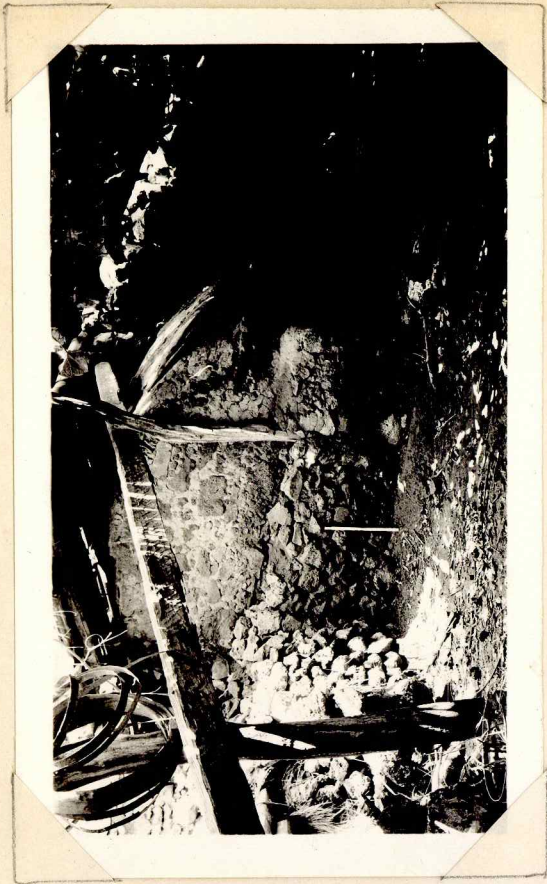
382

36-382



383

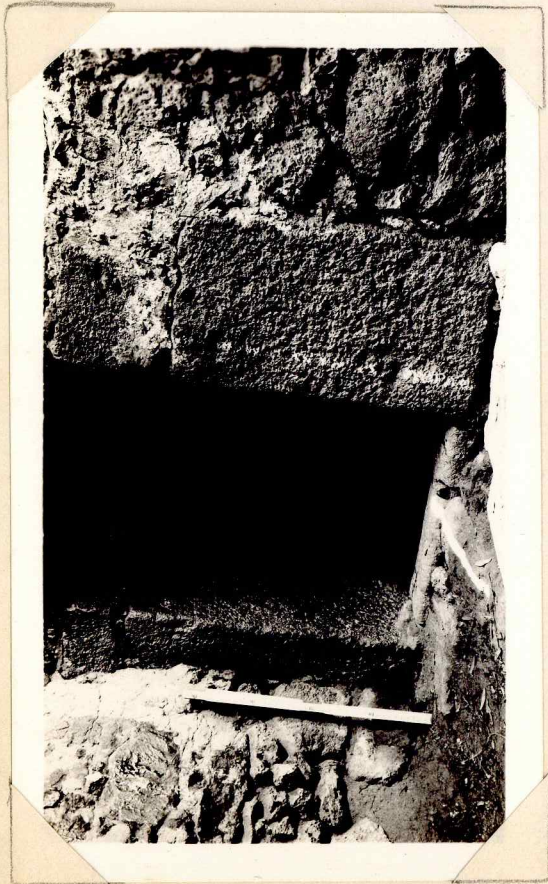
36-383



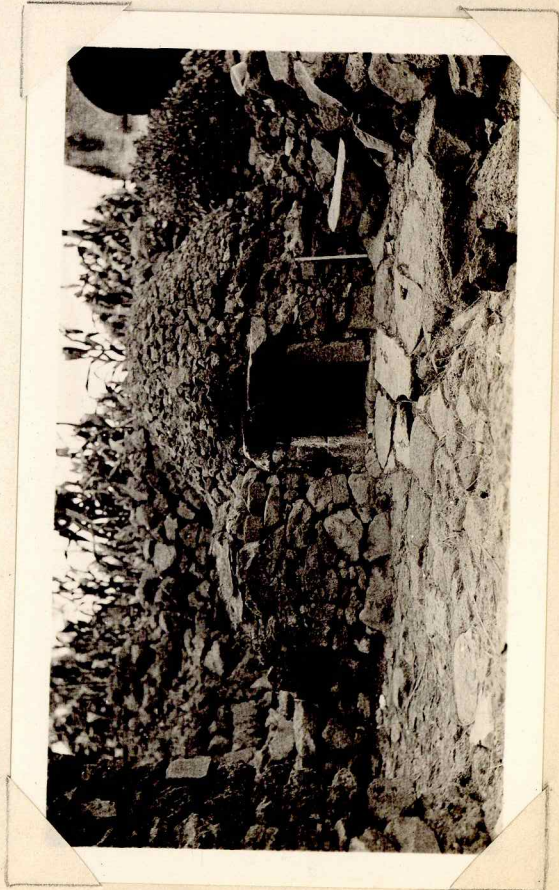
36-421



17600 36-422



36-423  
17601



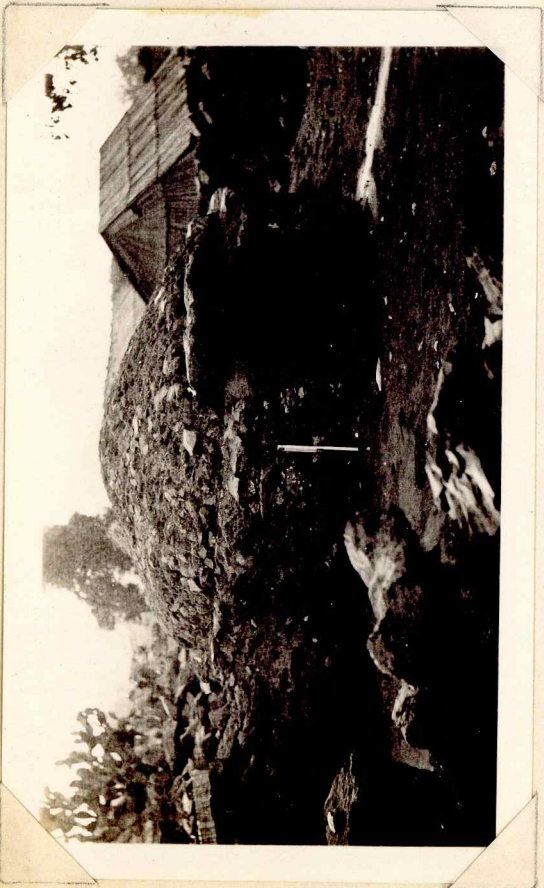
36-424  
17602



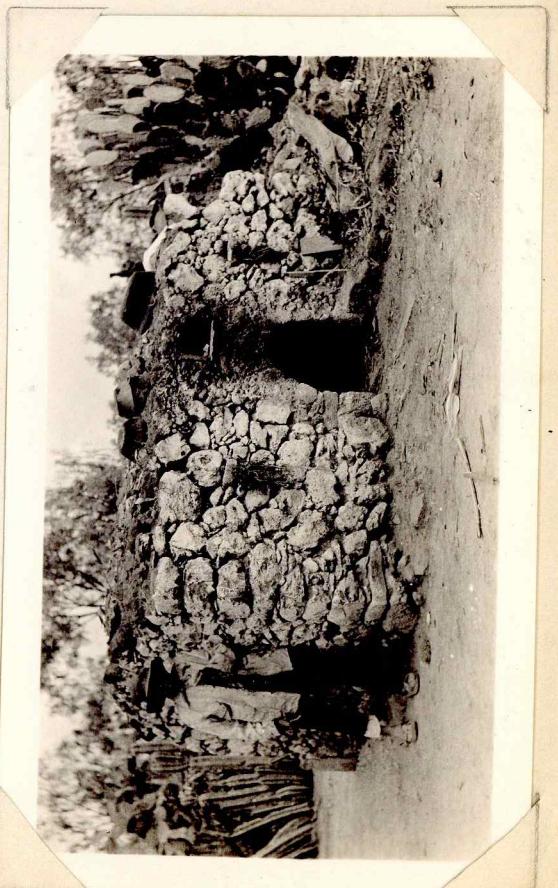
17603 36-425



36-426



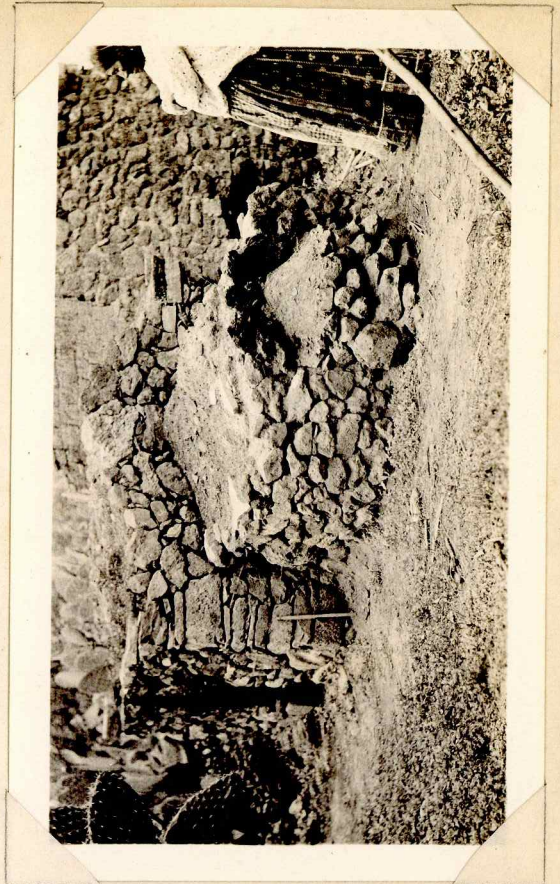
17605 36-427



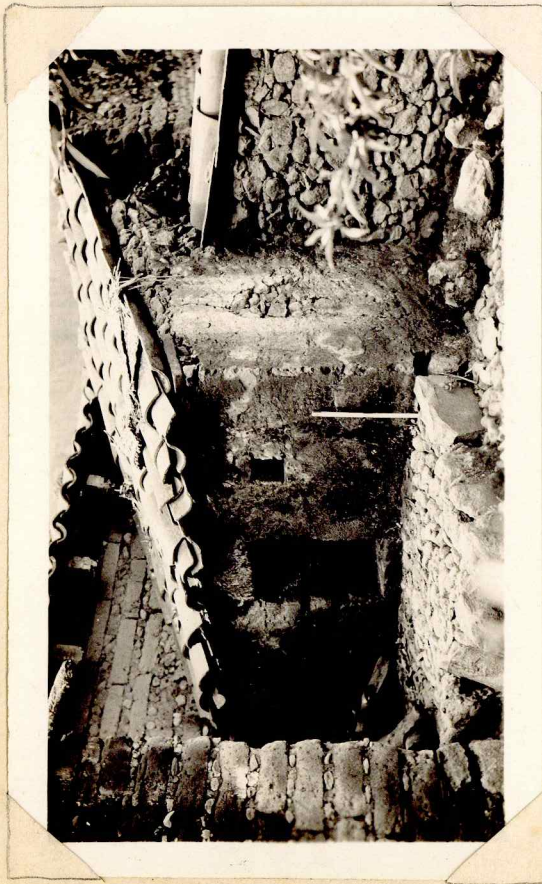
17606 36-428



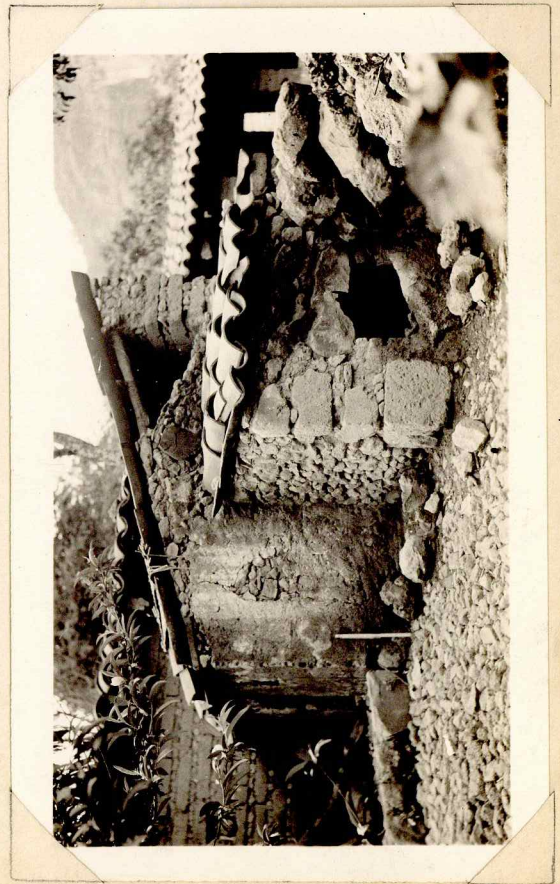
36-429



36-430



36-431 17609



36-432 17610