



154

36-1



36-2

153

36-2



film
 no. 3 is missing. See note in Catalogue
 which describes rt. side wall.

152 36-4

4



158 36-5

5



159 36-6



318 36-7



8-

319

36-8



9-

320

36-9



01-

316

36-10



317

36-11



321

36-12



322

36-13



84

36-14



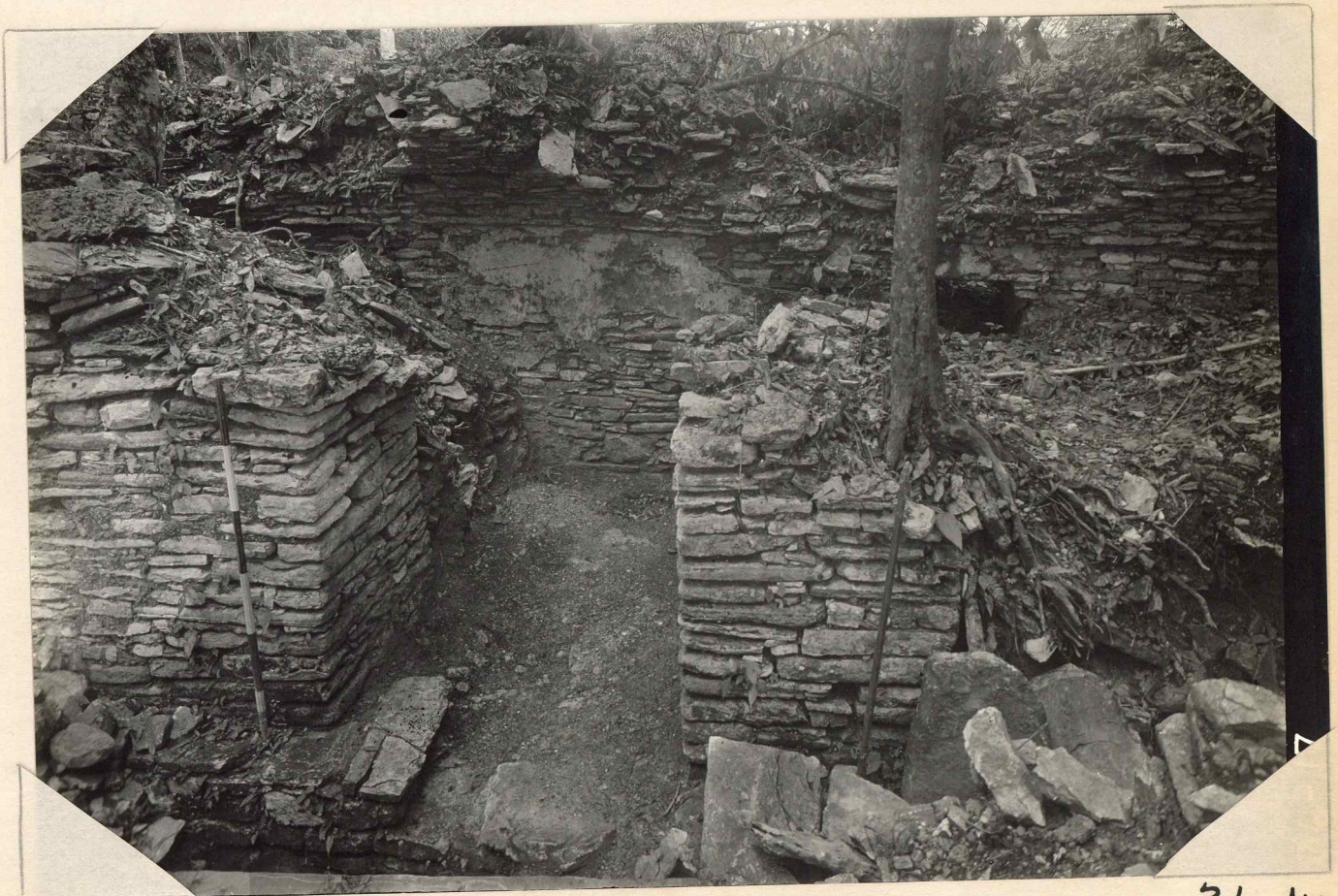
83

36-15



85

36-16



164

36-17



81-

80

36-18



81-

81

36-19



82

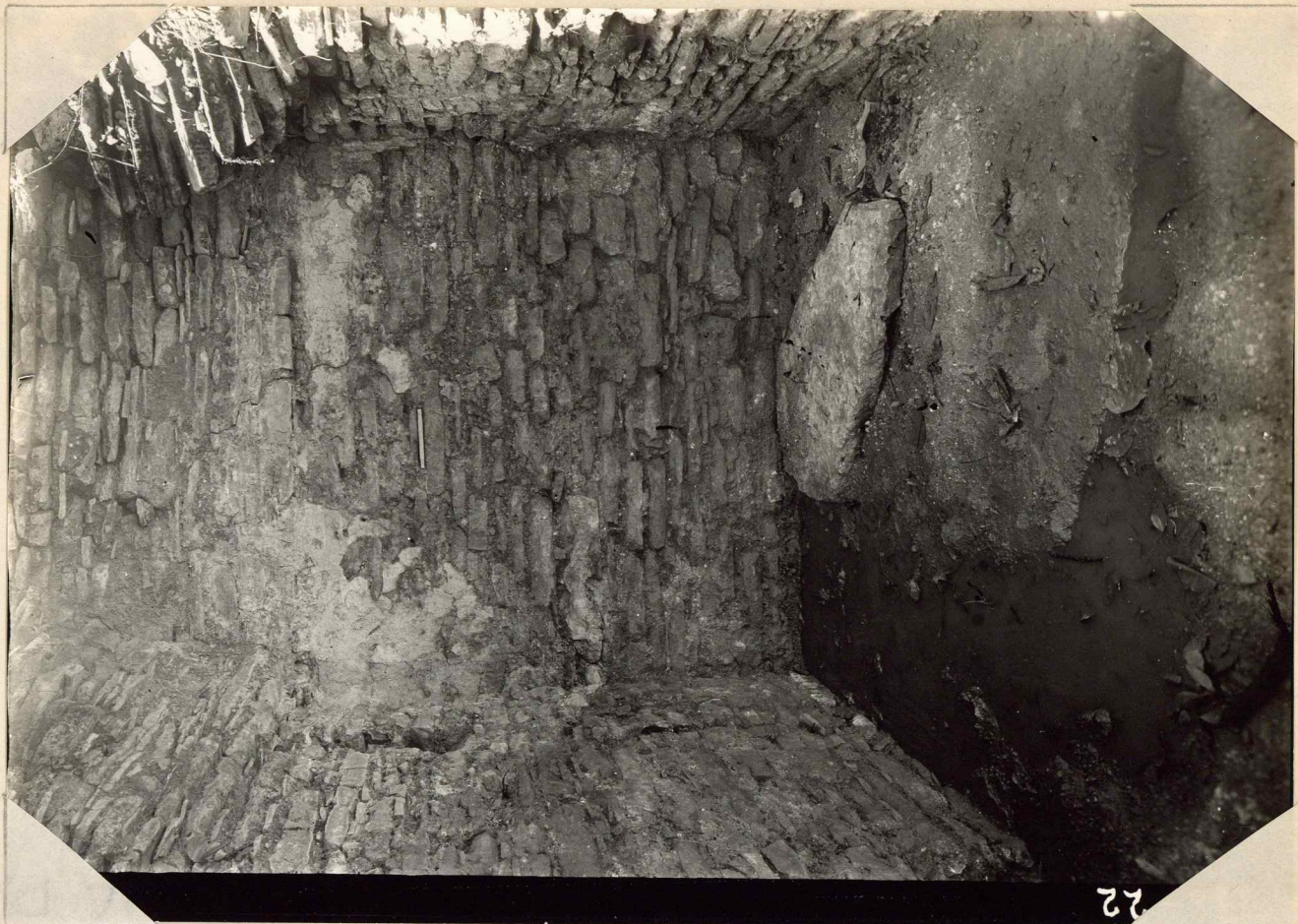
36-20



170

36-21

Slab Masonry (P. Nosos).
Ruosonw 9015
Mawu (P. Nosos).



165

22

36-22



167

23

36-23



36-24

168

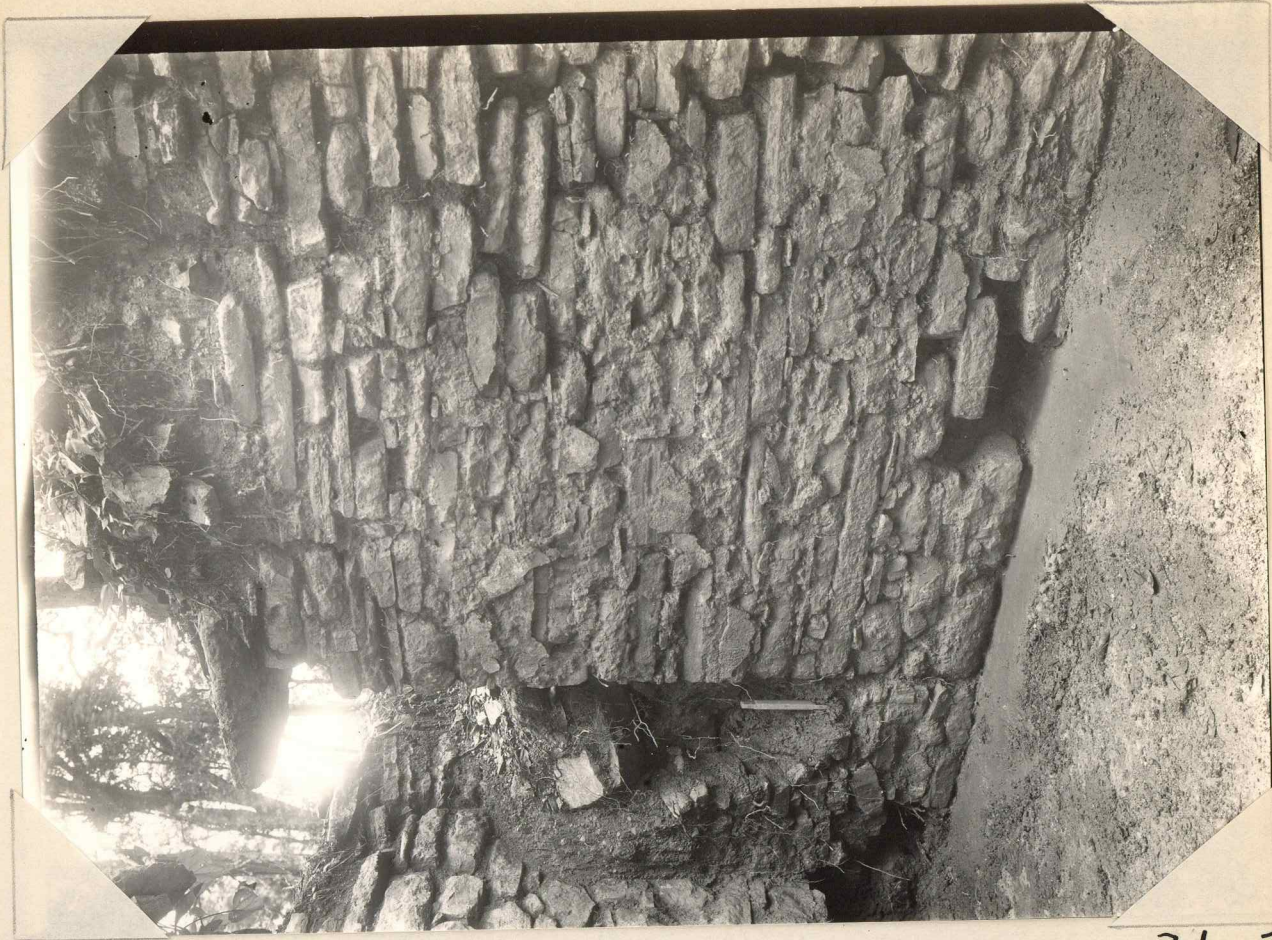
36-24



25

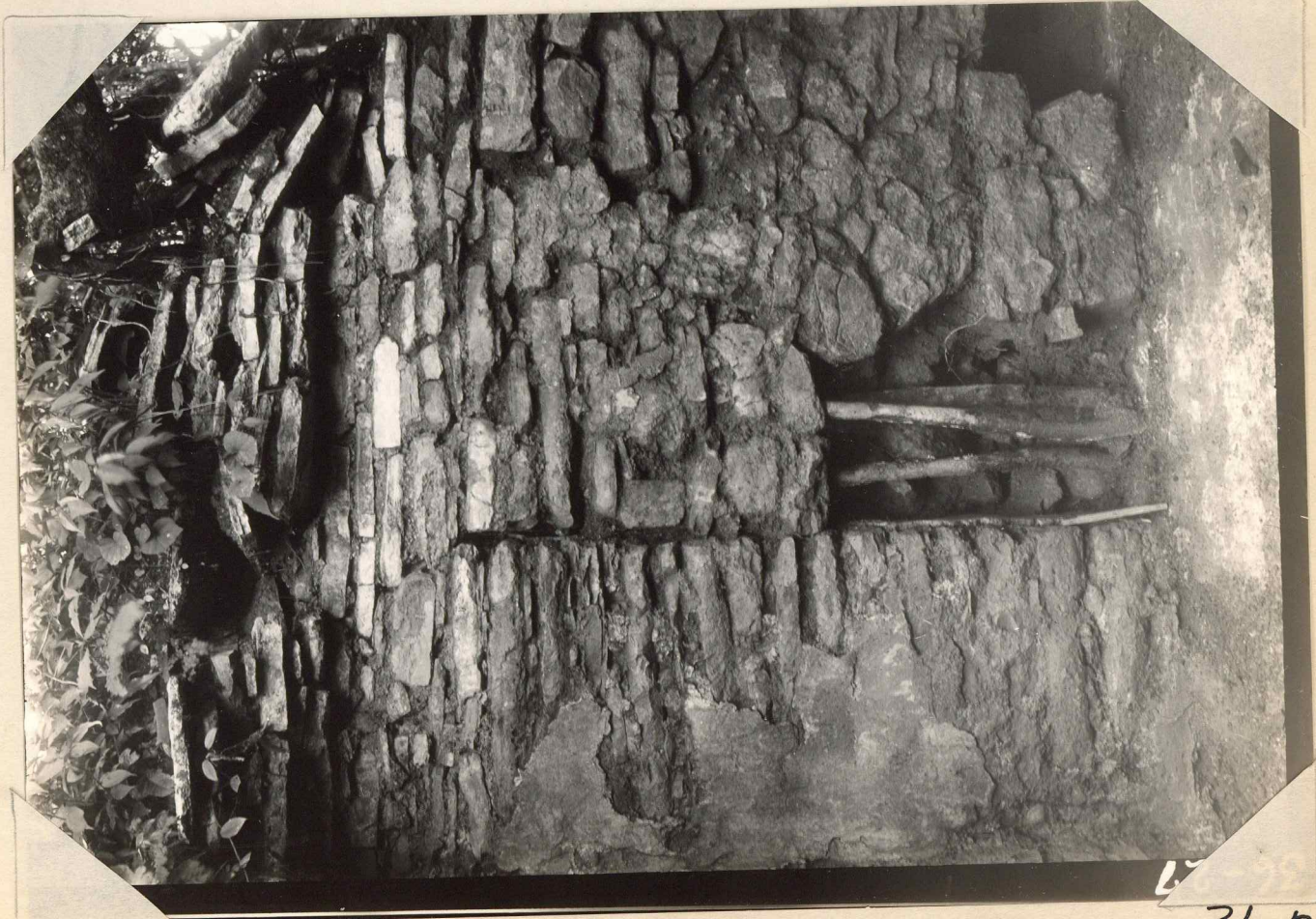
173

36-25



169

36-26



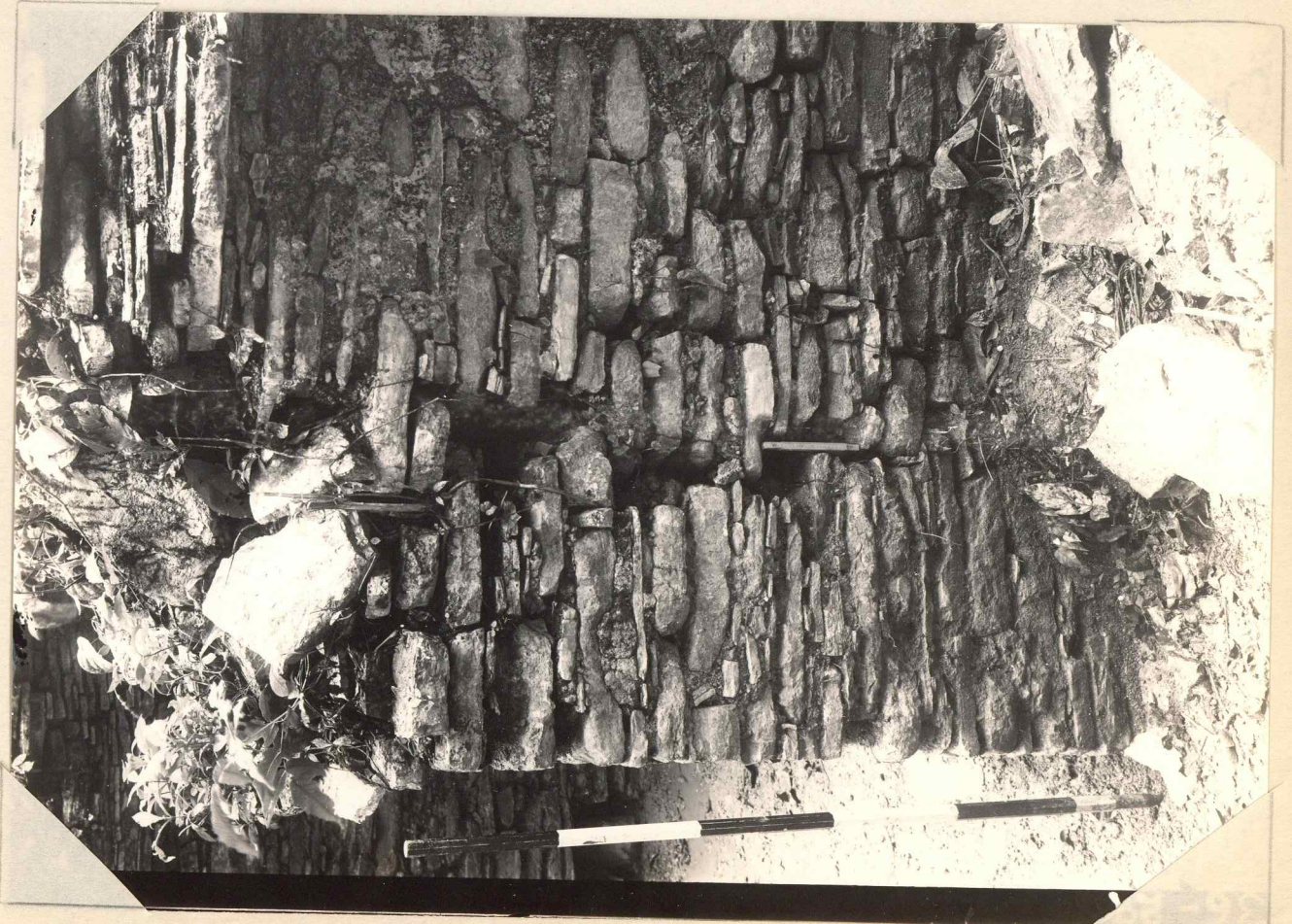
166

36-27



171

36-28



172

36-29



160

30

36-30

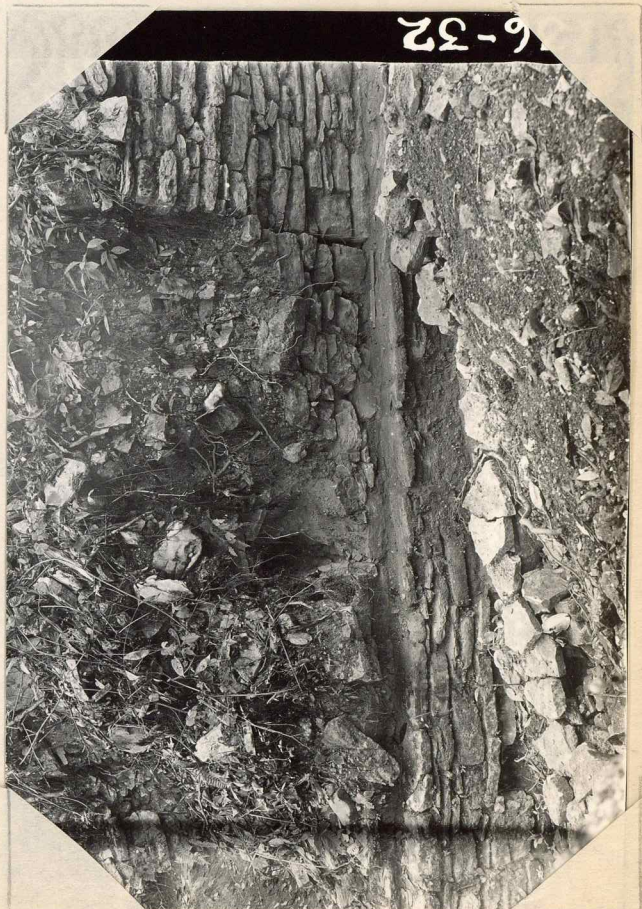


31

31

175

36-31



32

32

86

36-32



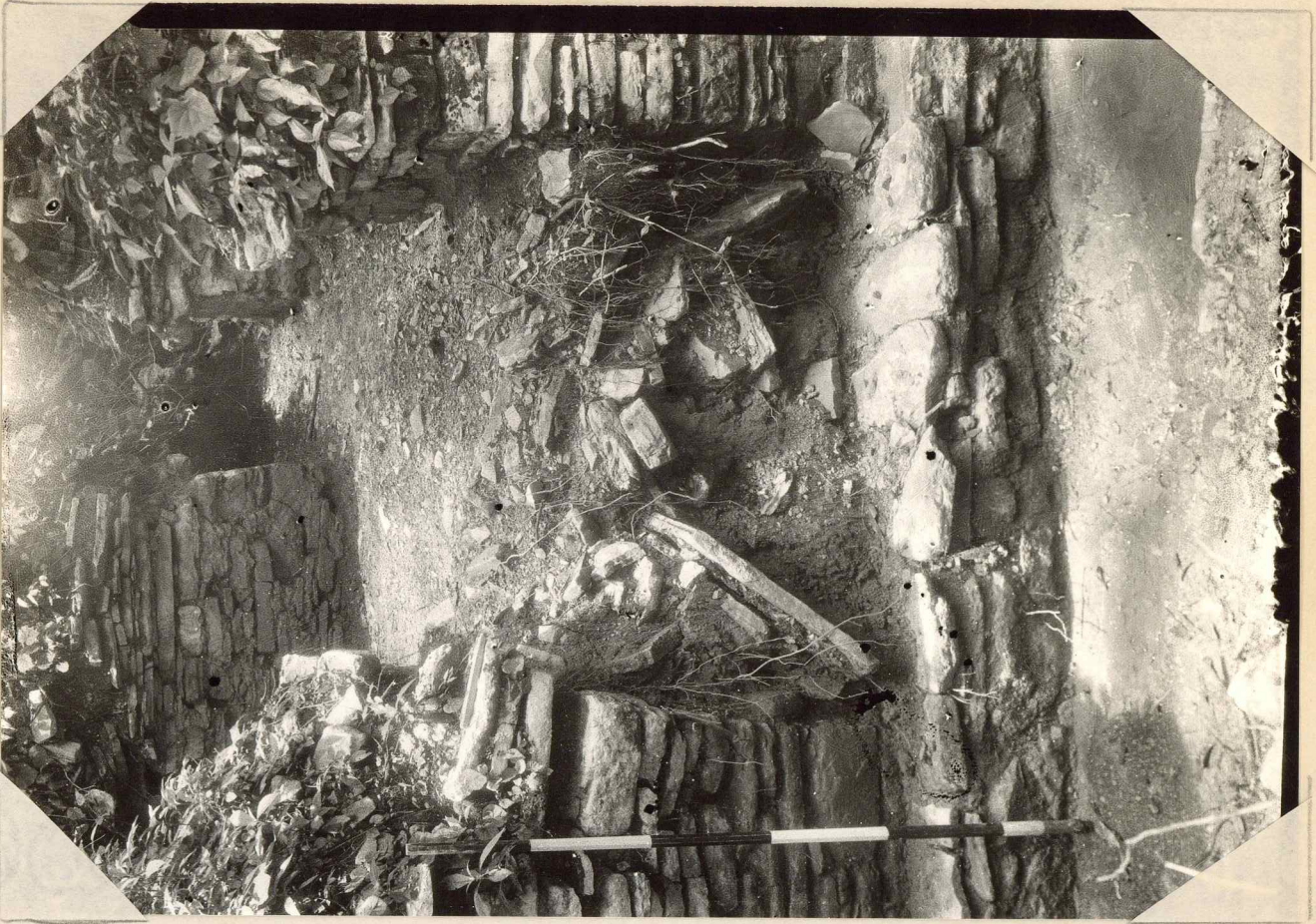
42

36-33



161

36-34



162

36-35



163

36-36

Piedras Negras 1936 PN 36-38
17220



38

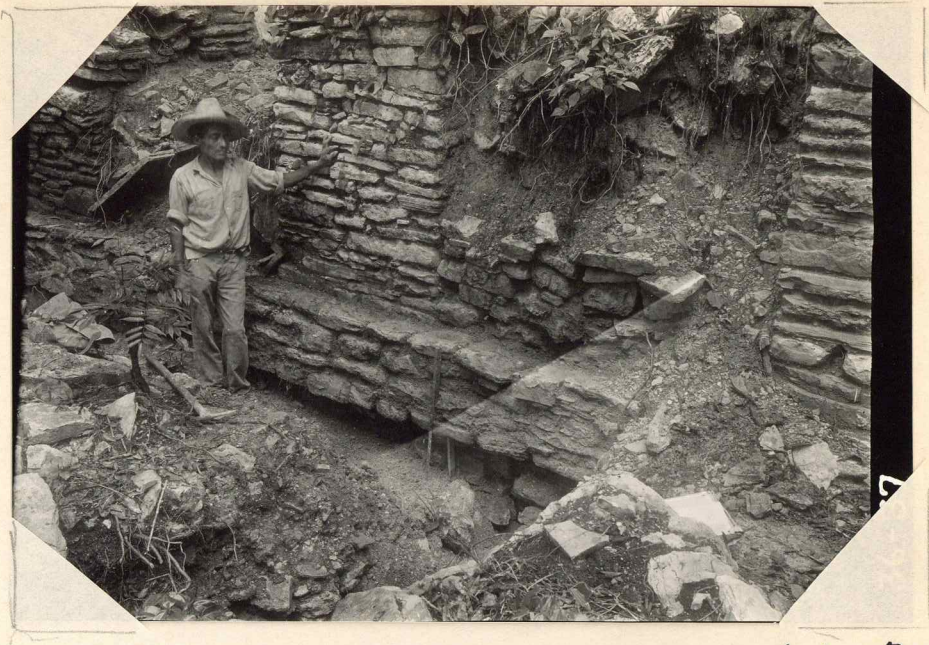
Letter	Double	Short	Long
pw	ppw	pwo (to swell)	ppwo (navigational initiation)
r	rr* (rare)	roong	rorrongorong (to hear) ²
rh	rrh* (rare)	rhik (small)	rrhik (small) ²
ch	cch	kachito (movie)	tipacchem (wise)
t	tt	átikk (to cut out)	áttik (to play)
w		hééw (stage of drinking coconut)	
y		hééy (to trip it)	
ý		hééý (a puffer fish).	

²These examples are borrowed from Elbert's Puluwat Grammar.

Notes on Linguistic Usage and Conventions in the Sea-Lore Transcription:

1. The Semivowels

There are three semivowels in Puluwatan: w, y, ý. The third, ý, is front and partially rounded; the symbol ý has been preferred to the w̄ of the Conference proposal for Lagoon Trukese (Conf. p. 11). In initial and medial position, ý occurs before the rounded vowels: o, ó, u, ú, é. For example: ýop ("to be broken"), ýóó ("fishline"), aýul (a kind of fish), káýúúló ("stop"), kúýéwe ("the porpoise"). In medial position and, in a few words, in initial position, y occurs before the unrounded vowels: a, á, i, e. For example: yaal ("road"), yaaf ("to swim"), láyiláy ("long"), pááyefáng (star name). w is found in contrast with y and ý; for example: wóó ("color") and ýóó ("fishline"), waal ("forest") and yaal ("road").

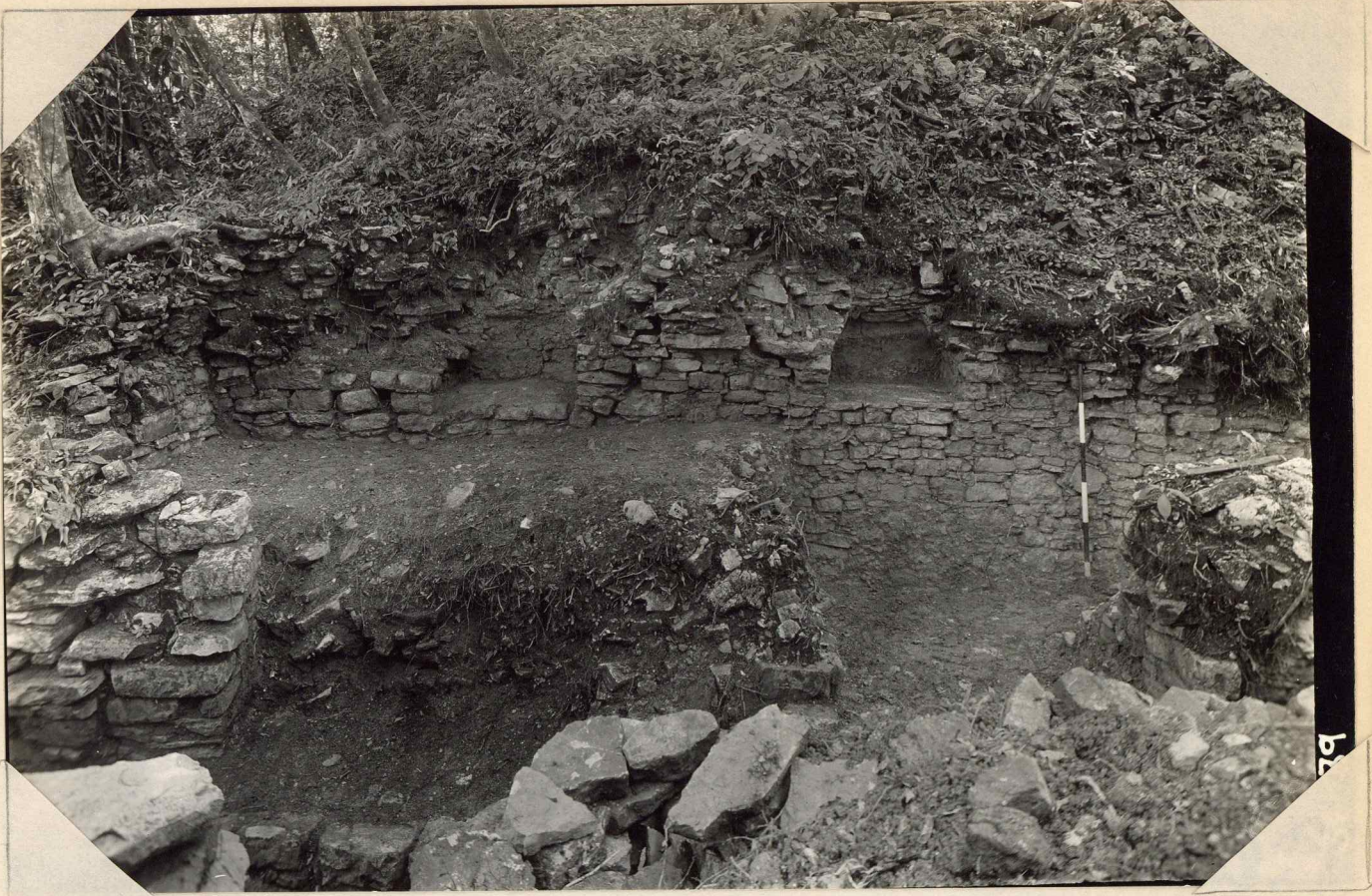


176

36-37

174

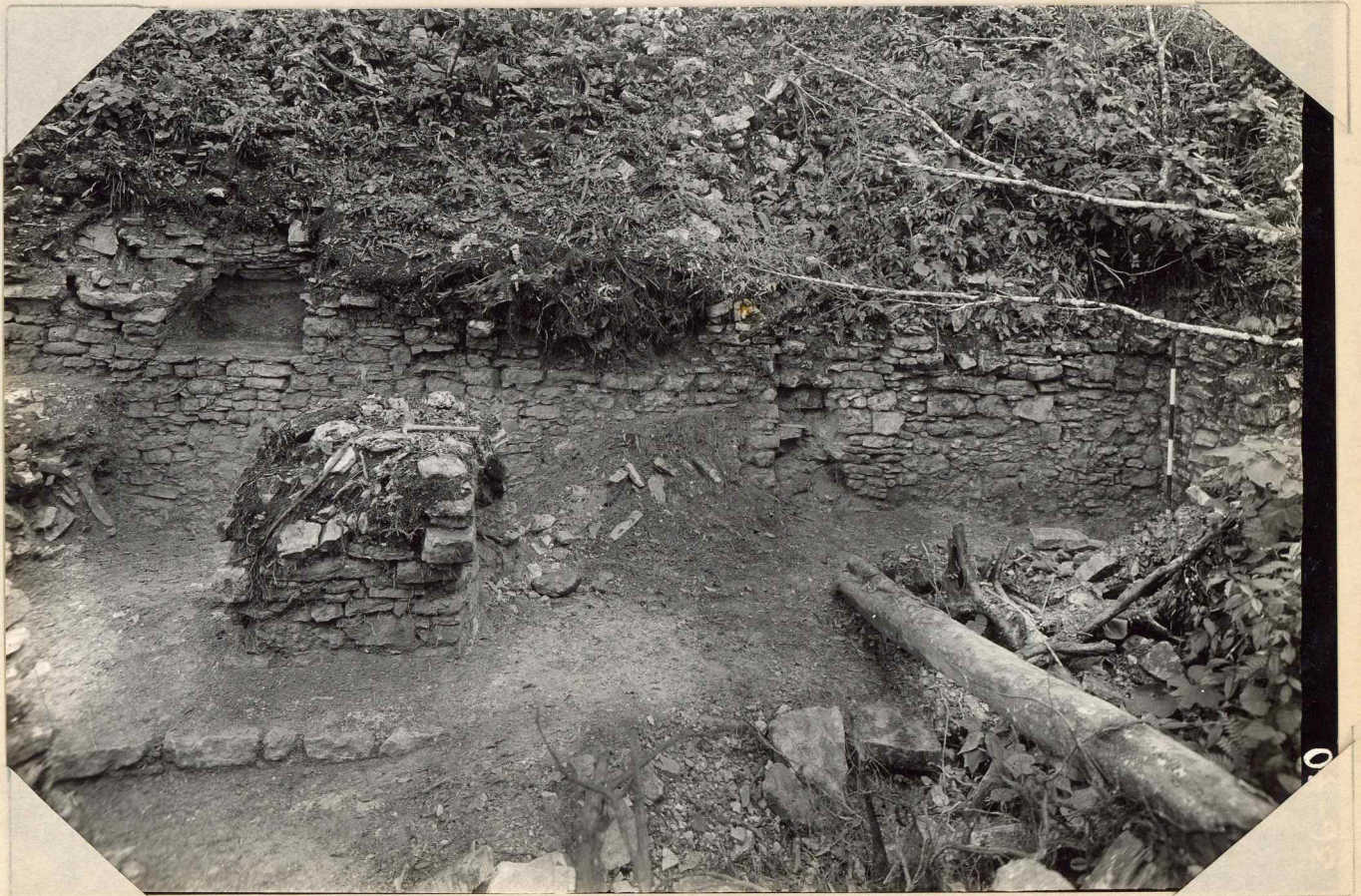
36-38



177

36-39

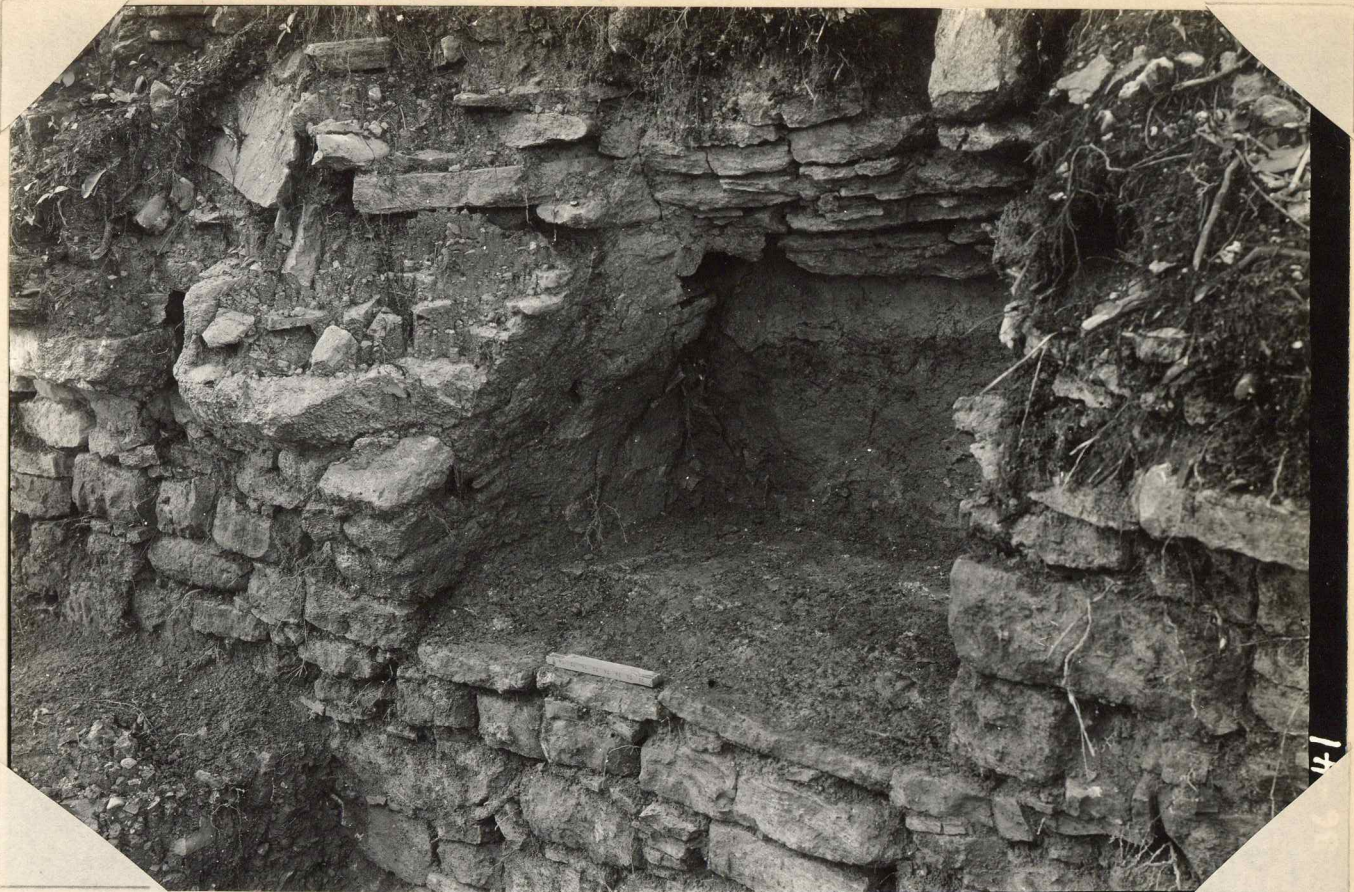
b



178

36-40

c



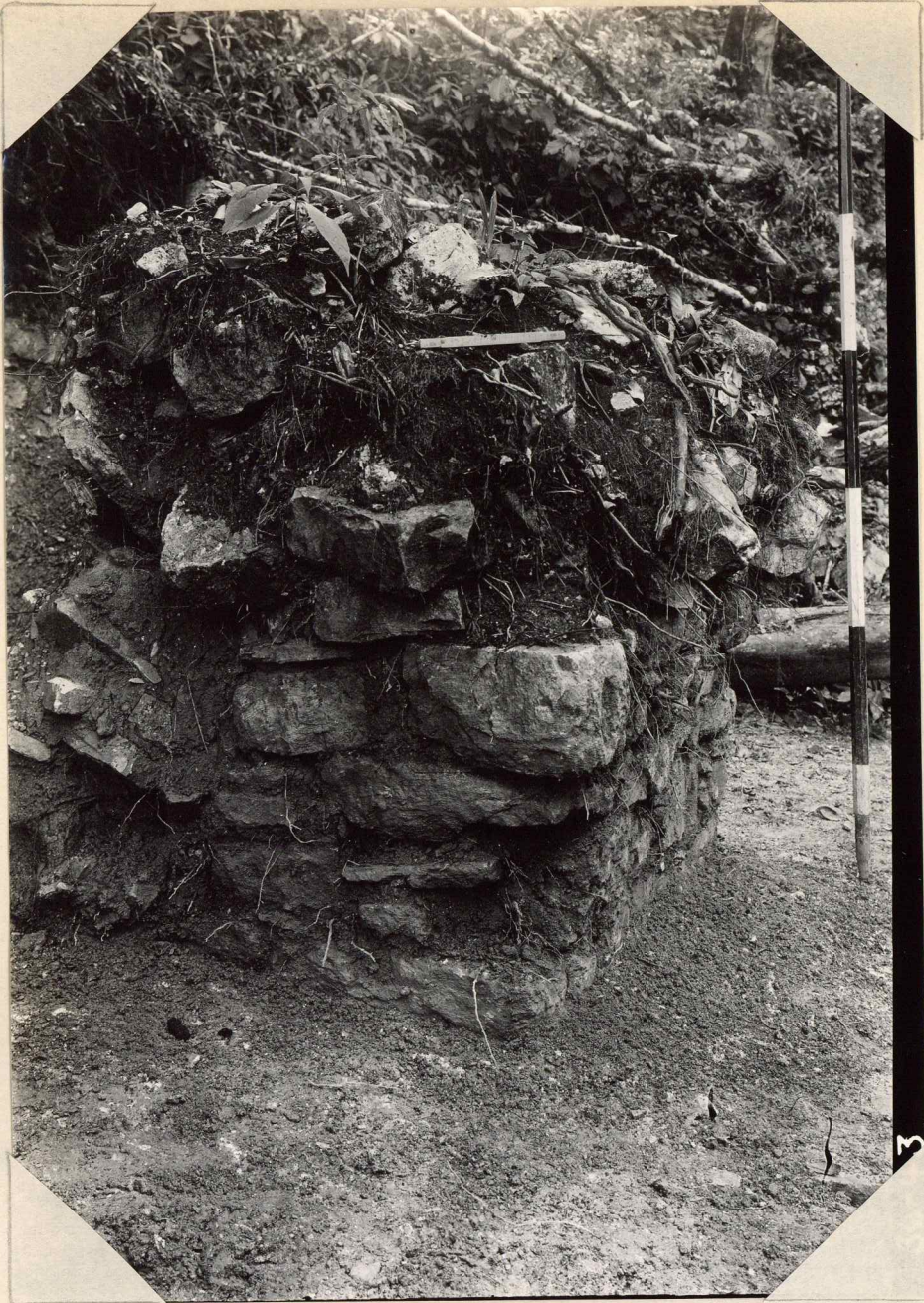
179

36-41



180

36-42



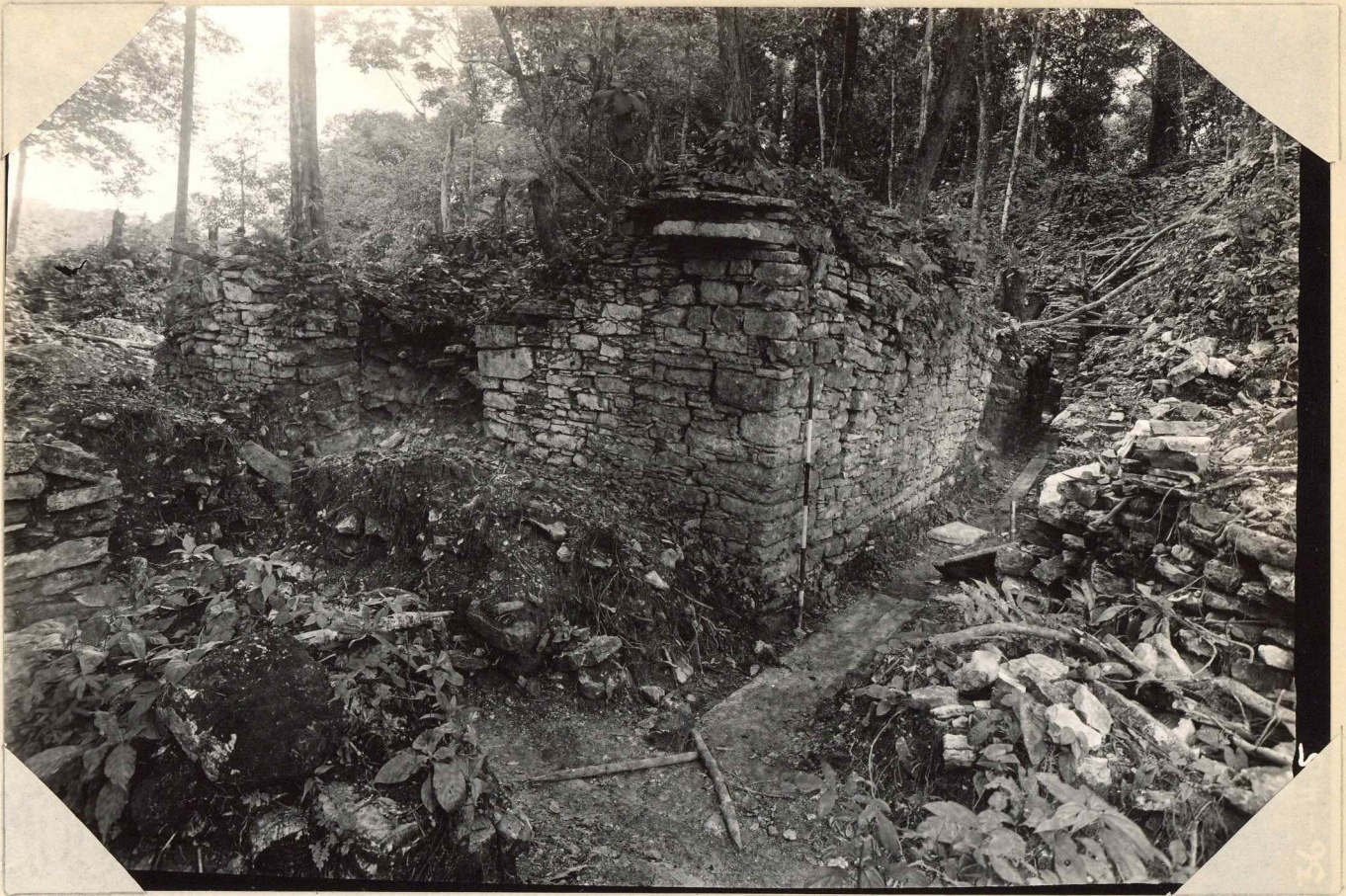
36-43

181



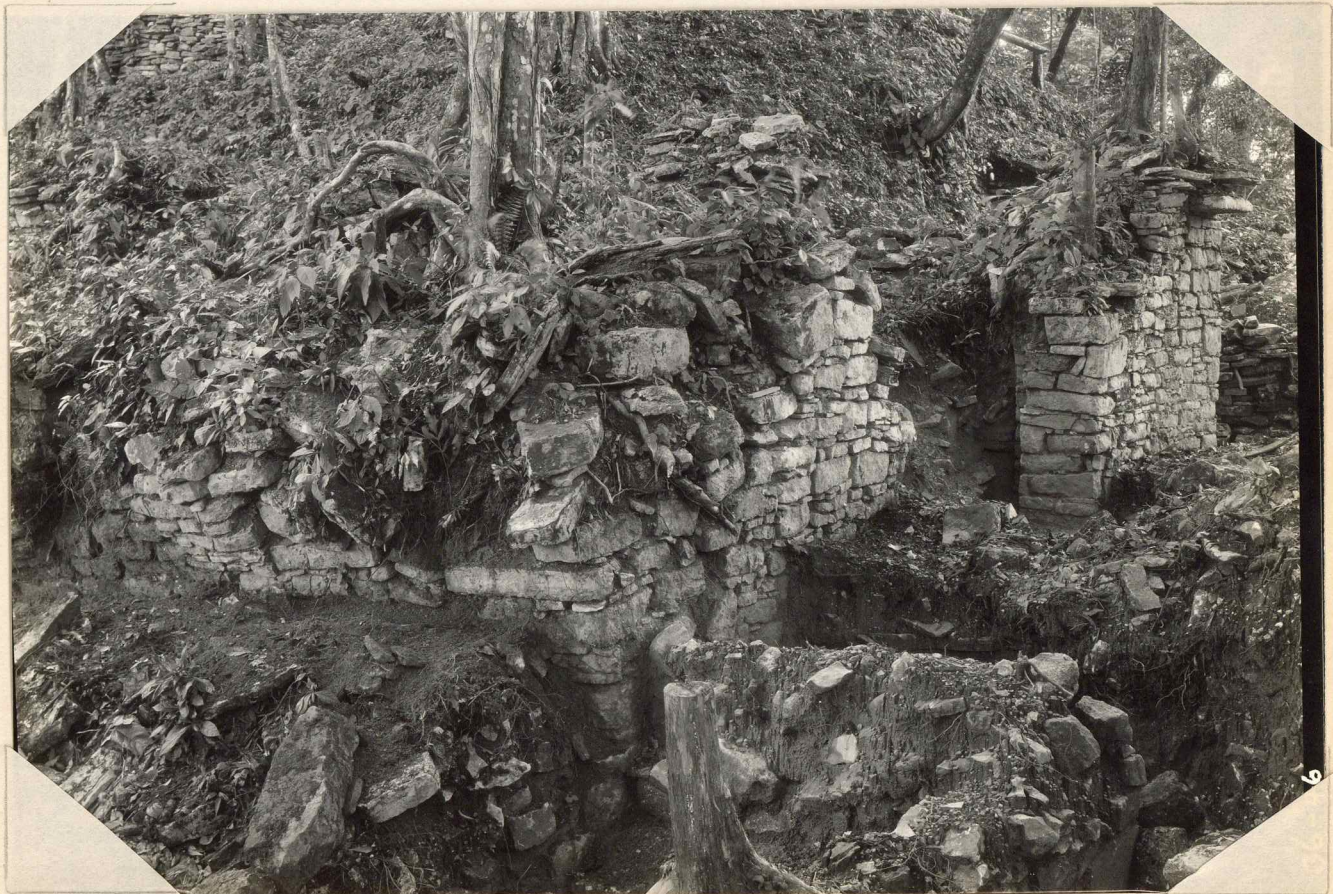
36-44

199



182

36-45



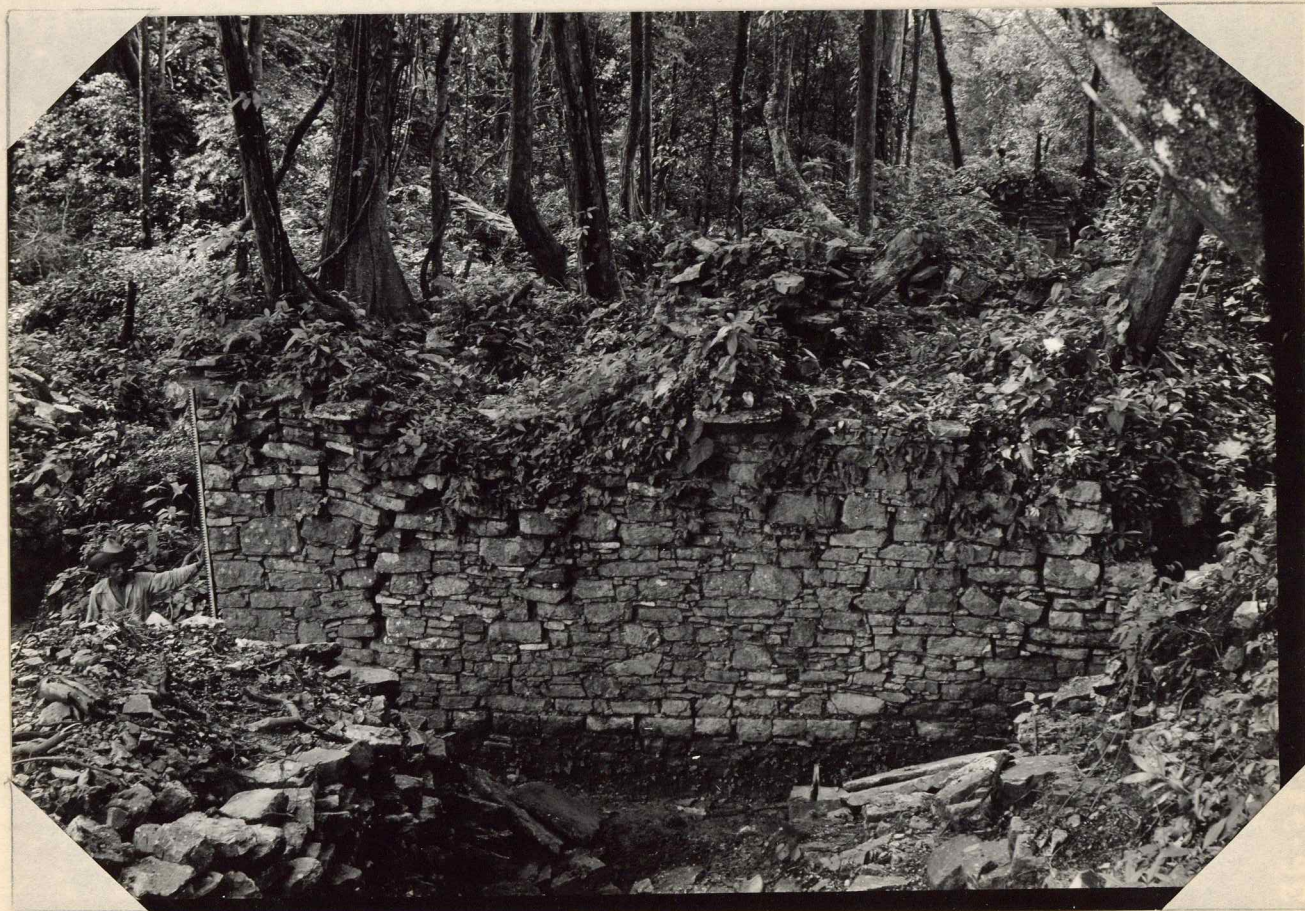
184

36-46



183

36-47



151

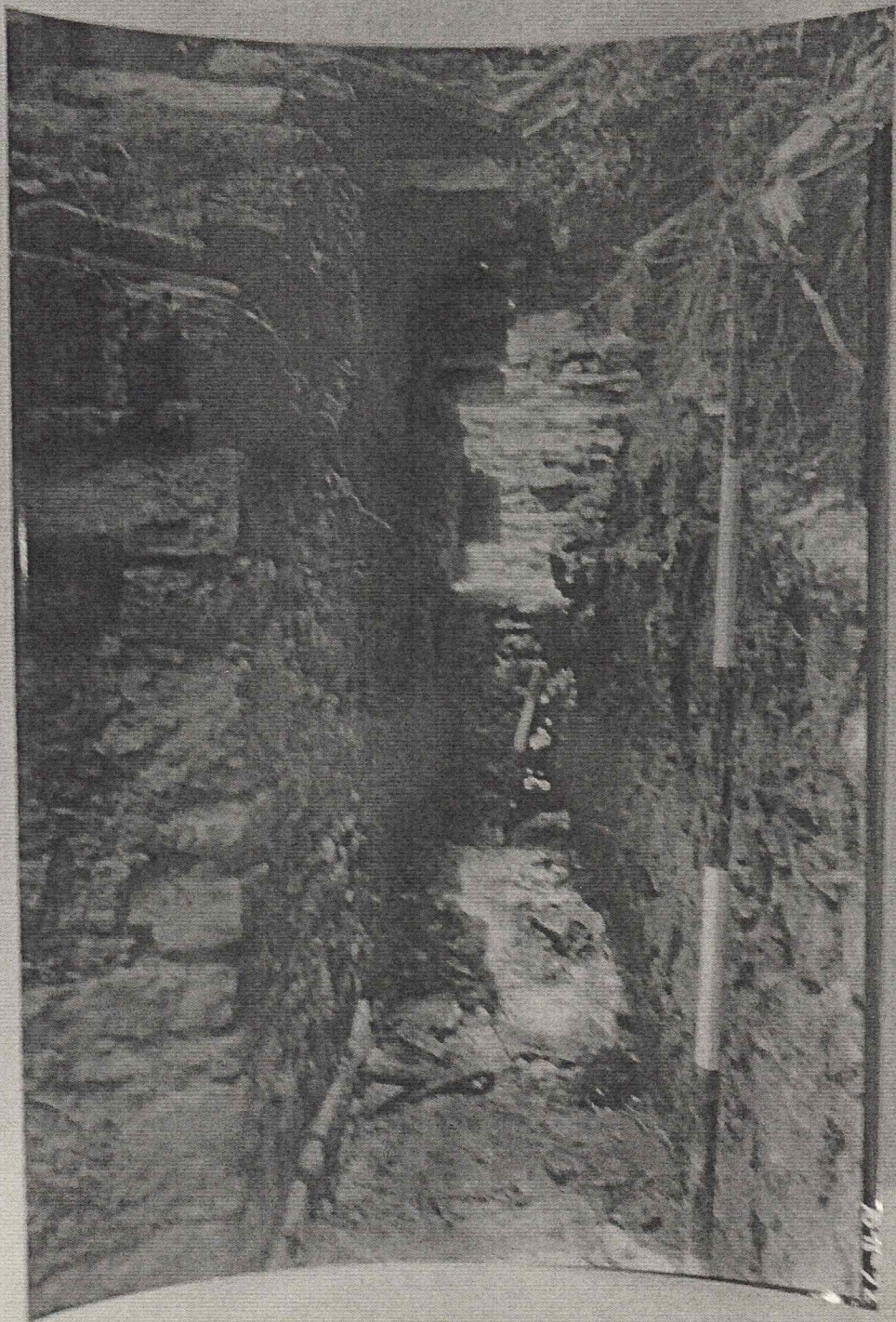
36-48

Piedras Negras 1926

2-90

PH 310-49

17231



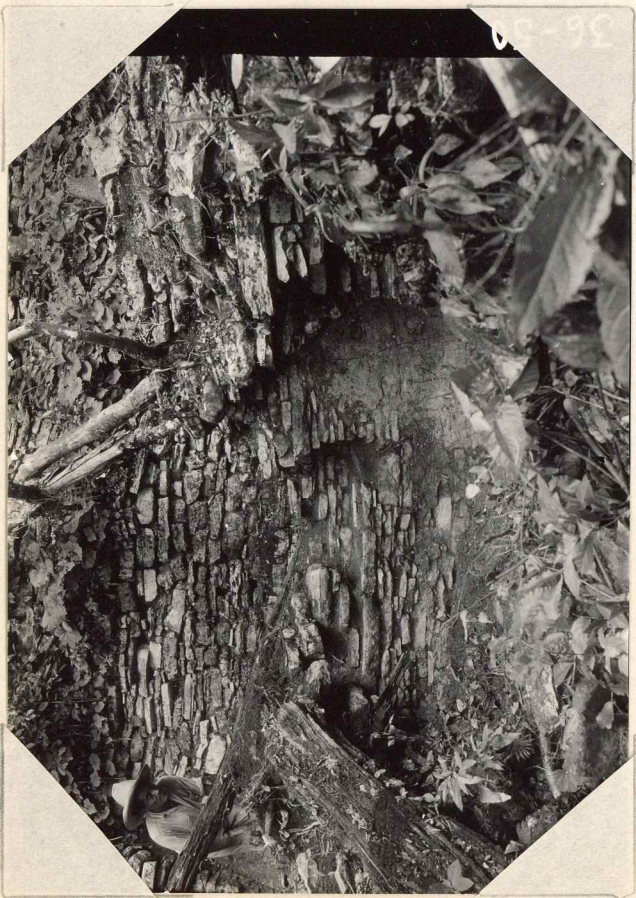
Significant changes from the Conference's proposal for the Western Languages are marked with an asterisk.

ORTHOGRAPHY FOR PULUWATAN

Letter	Examples		
	Double	Short	Long
a	aa	manaman (power)	maan (animal)
á	áá	tá (to fit)	táálong (to fit into)
e	ee	enen (interjection)	een (you)
é	éé	hé (to rest)	héé (color of sunset)
i	ii	kin (thought)	kiin (belt)
o	oo	rongorong (to hear)	roong (esoteric knowledge)
ó	óó	mó (to heal)	móó (taro islet)
u	uu	un (poison)	uun (star name)
ú	úú	ún (to drink)	úún (coconut-bark filter)
f	ff	faafaaló (to push off with feet)	faffalló (to think about)
h	hh*	hó (canoe thwart) ²	hhóó (socket) ²
s	ss	sense (teacher)	kilissow (thanks)
k	kk	áttikiy (to play it)	tiikka (coconut oil)
l	ll	faafaaló	faffalló
m	mm	amanaawa (to exercise)	ammaan (to drift)
mw	mmw	ámwáh (to display sexually)	ámmwán (to disobey)
n	nn	enen	ennán (possession)
n	nng	ngé (but)	nngé (strand tree) ²
p	pp	pé (empty)	ppé (a game)

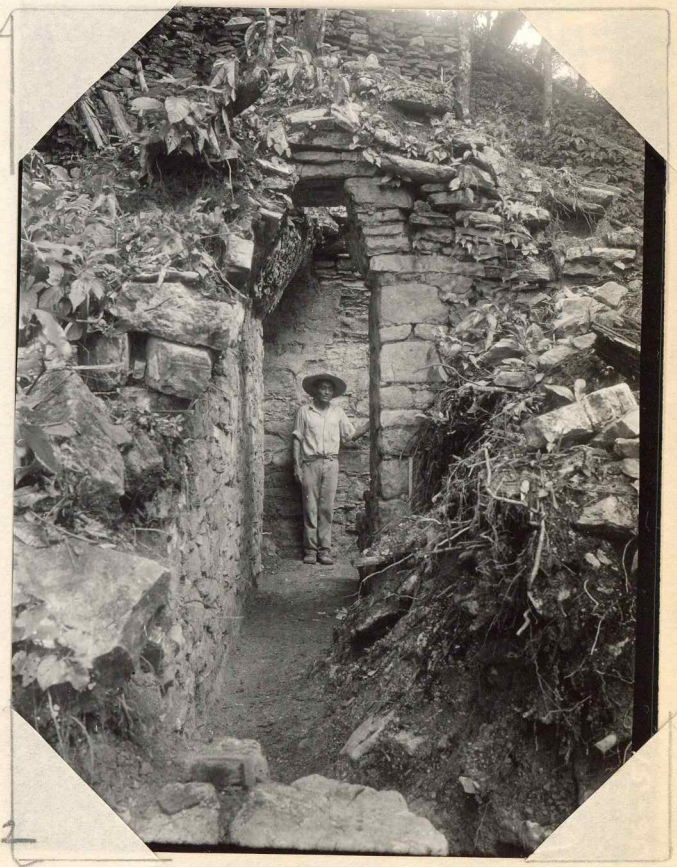
185

36-49



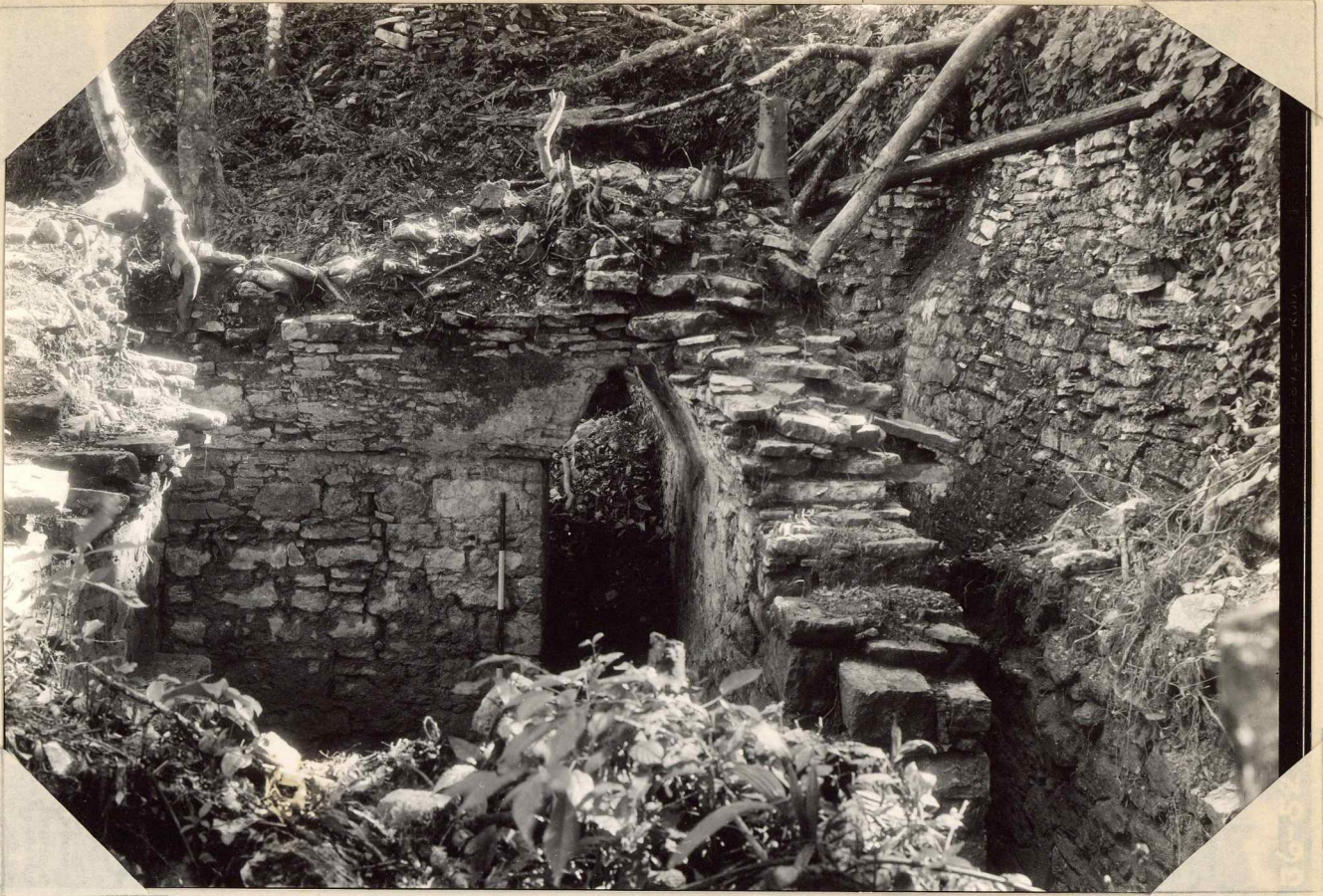
201

36-50



202

36-51



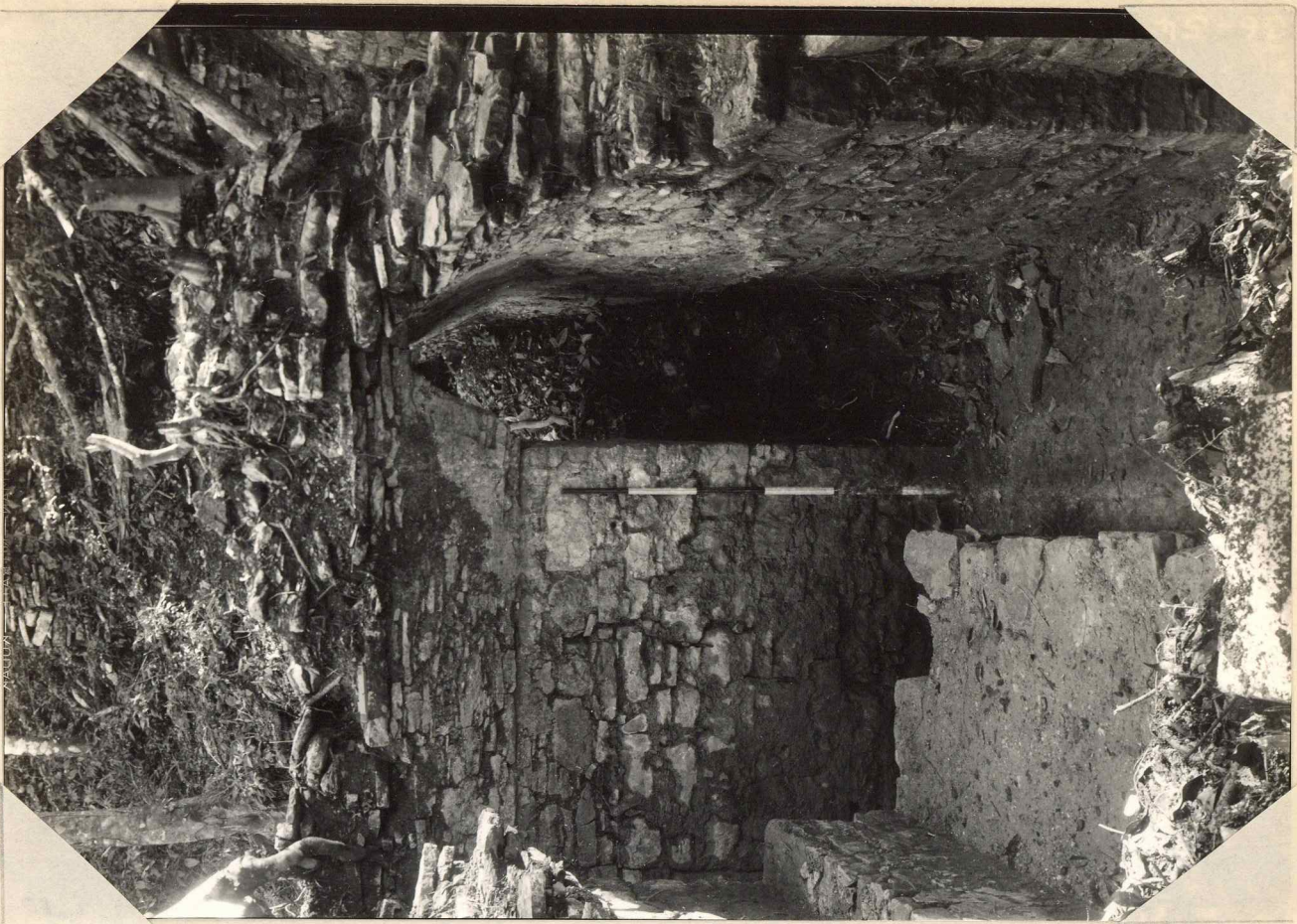
187

36-52



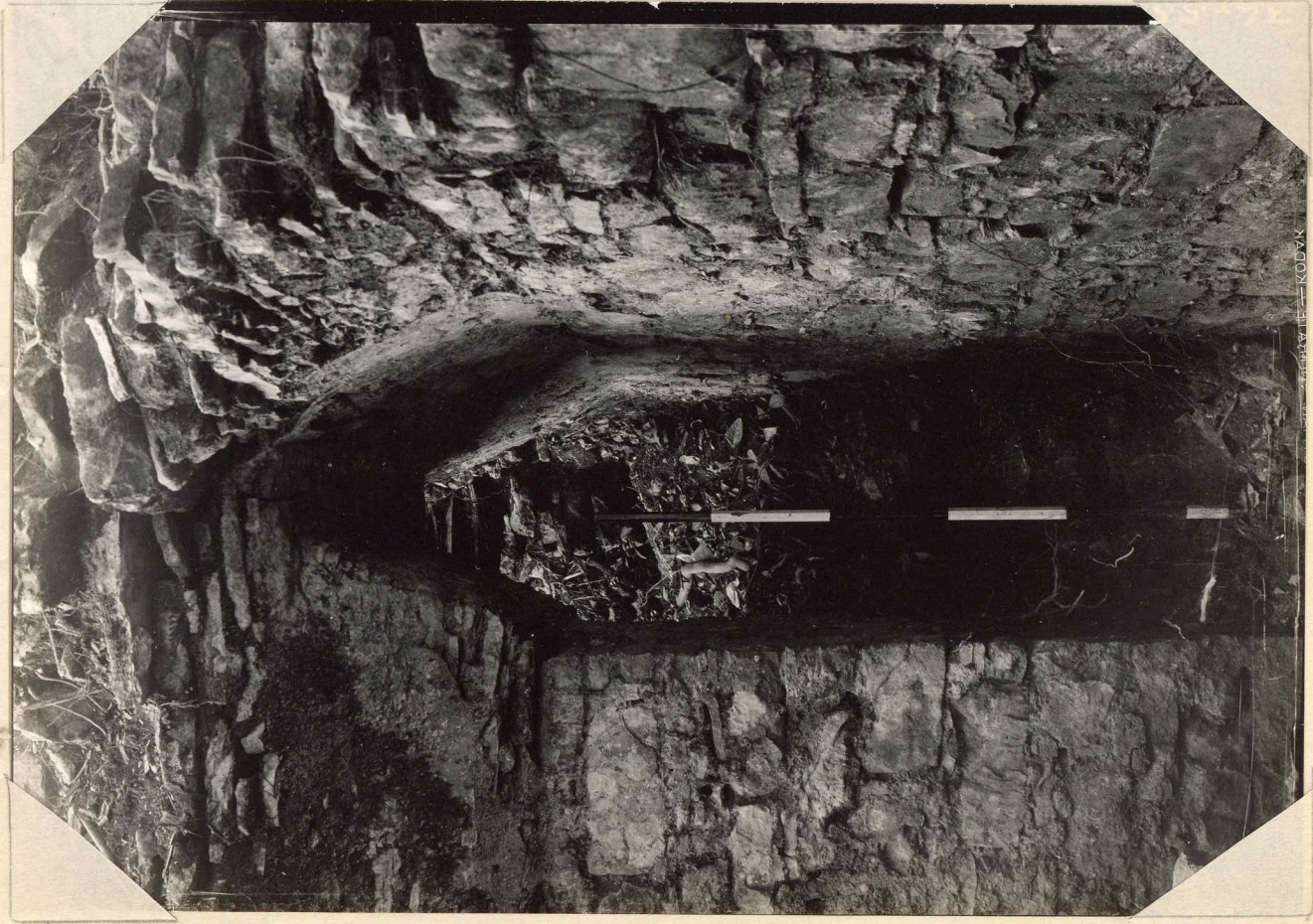
197

36-53



189

36-54



191

36-55

PHOTOGRAPHED BY KOBAYASHI



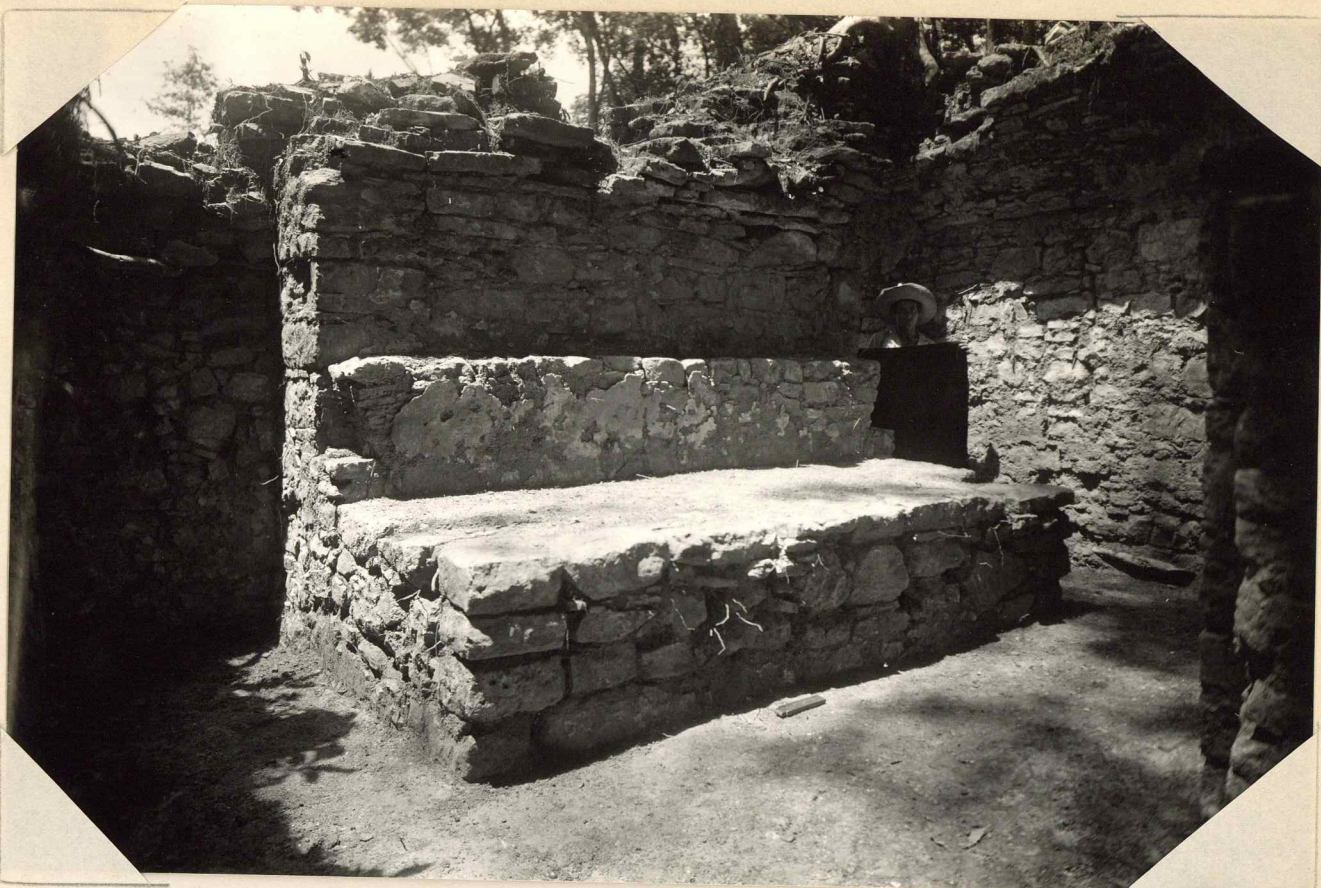
190

36-56



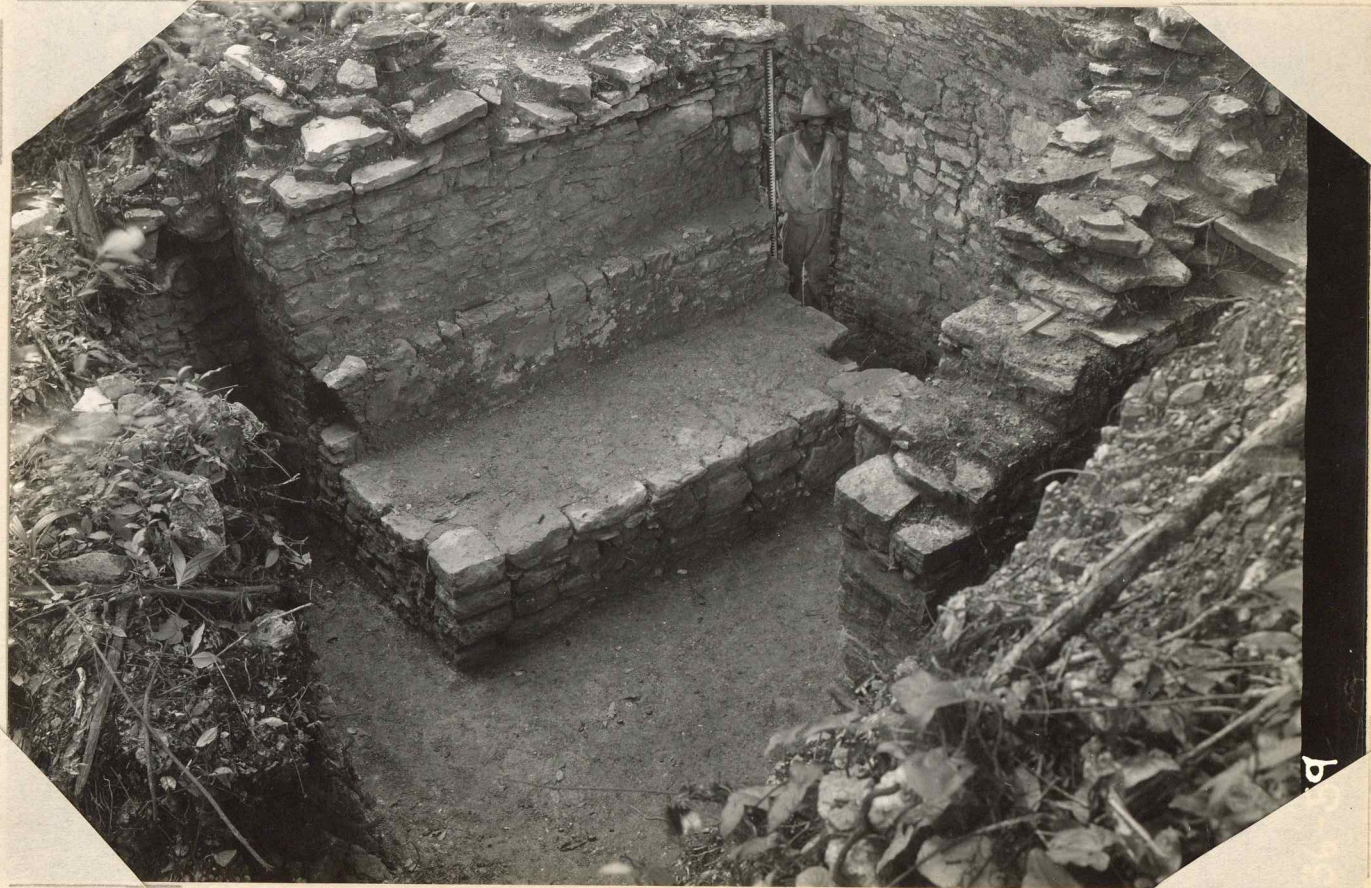
188

36-57



155

36-58



198

36-59



200

60

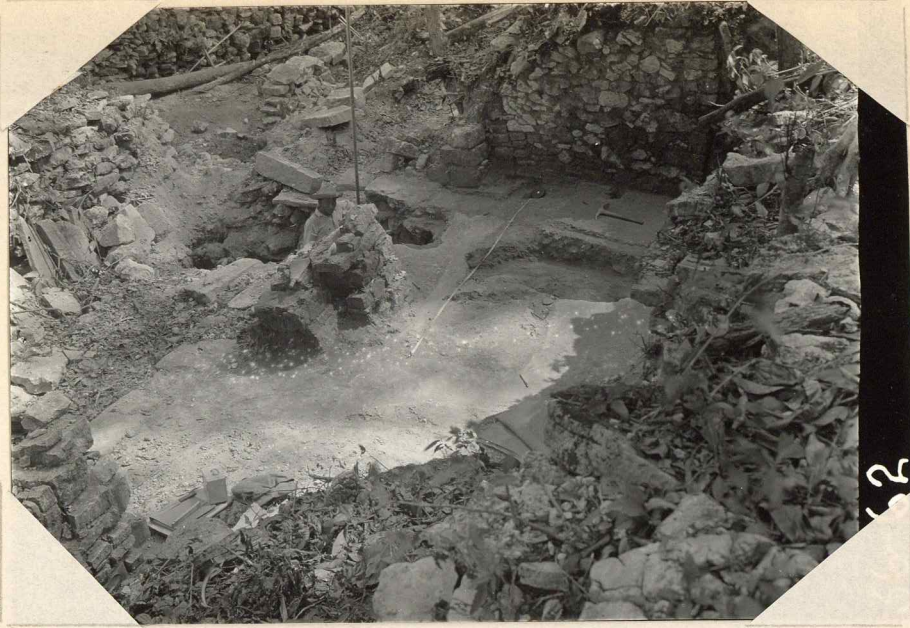
36-60



41

61

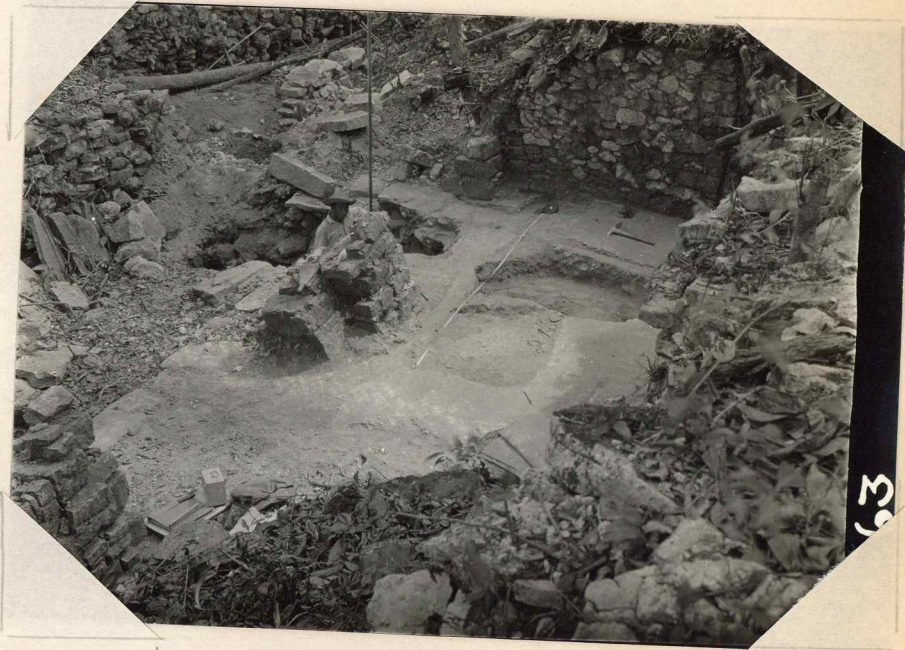
36-61



36-62

36-62

43



36-63

36-63

44



36-64

36-64

45



5

36-65

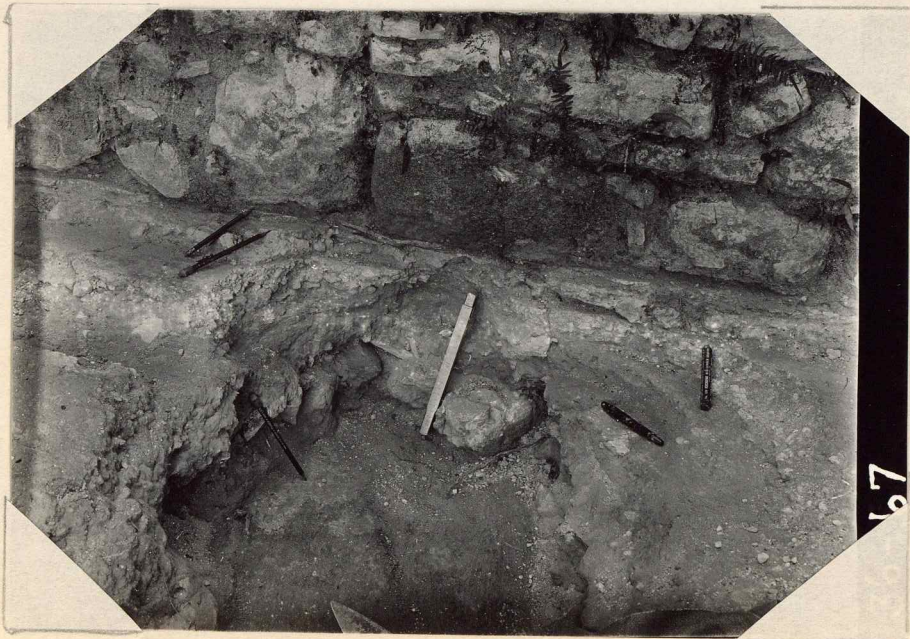
46



66

47

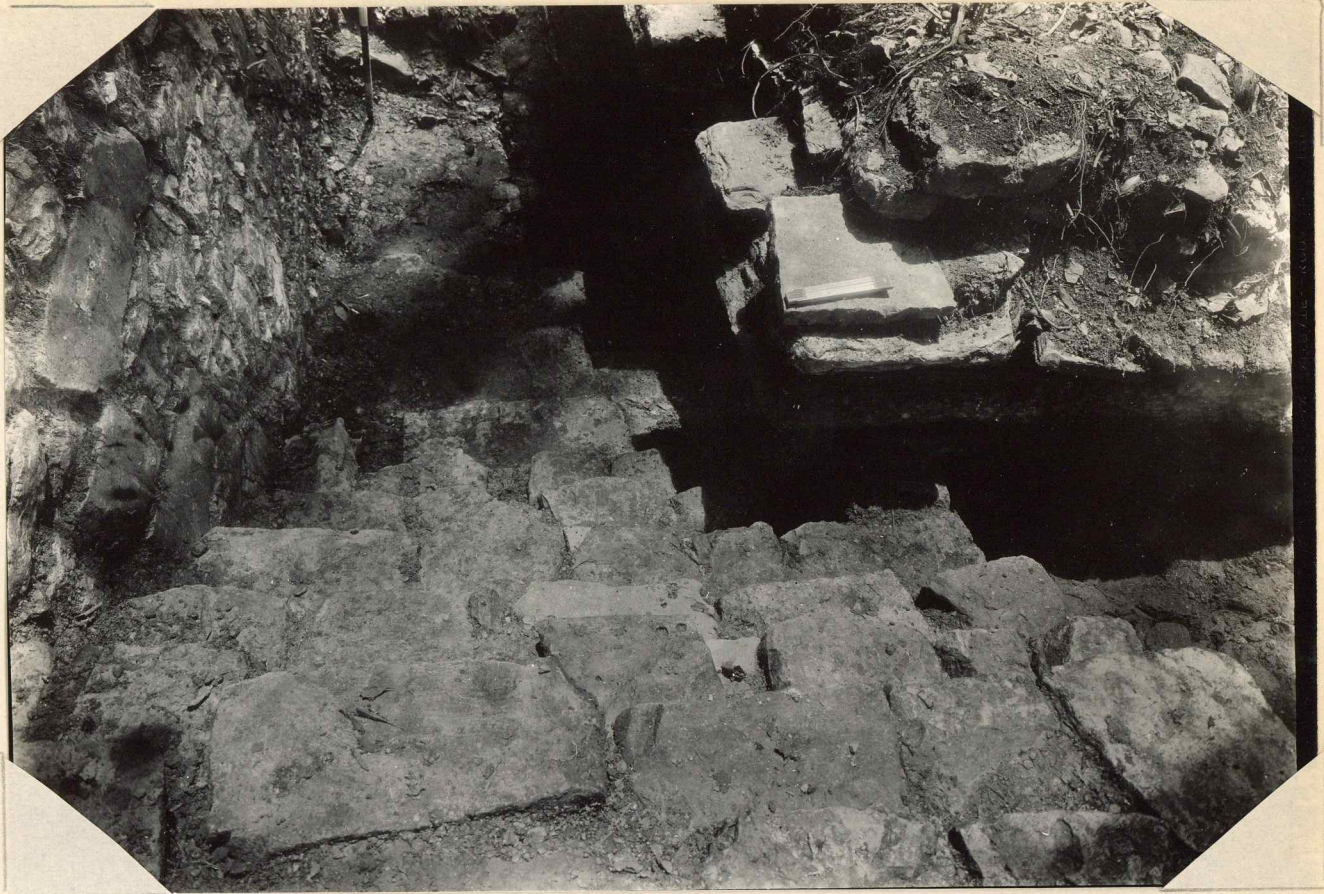
36-66



67

48

36-67



193

36-68



194

36-69



70

36-70

136

137

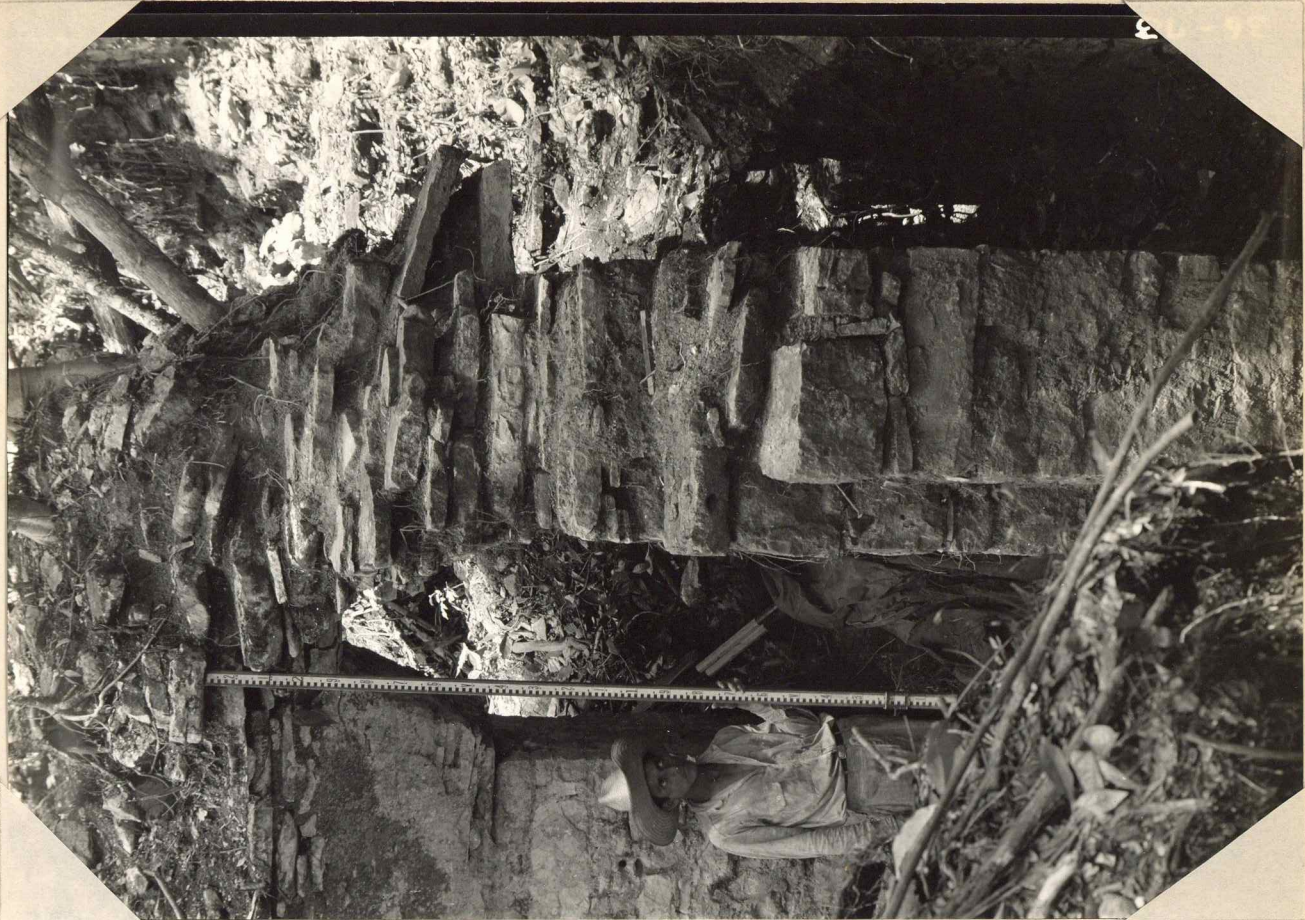
film #71_a is missing. Same as #70.



72

36-72

146



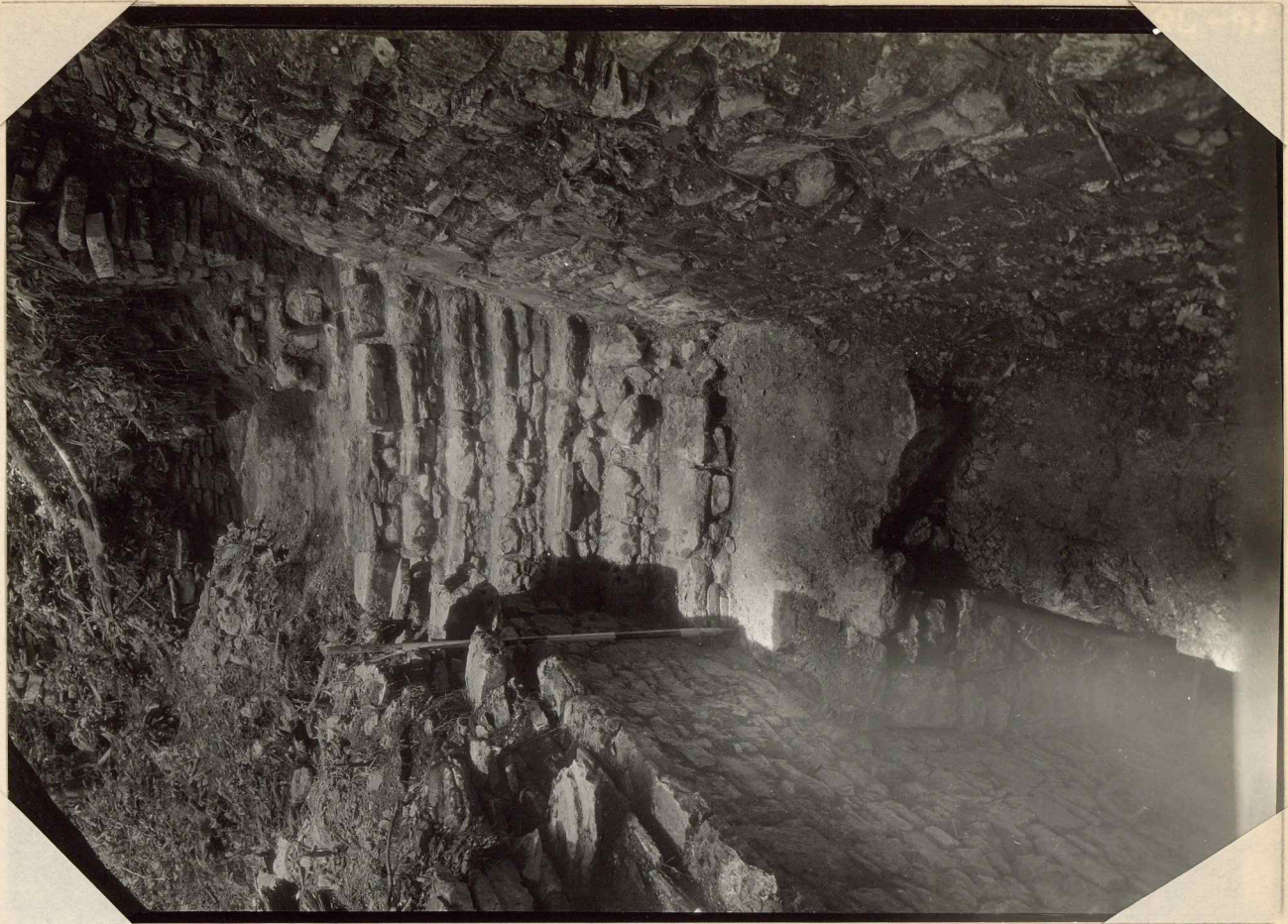
156

36-73



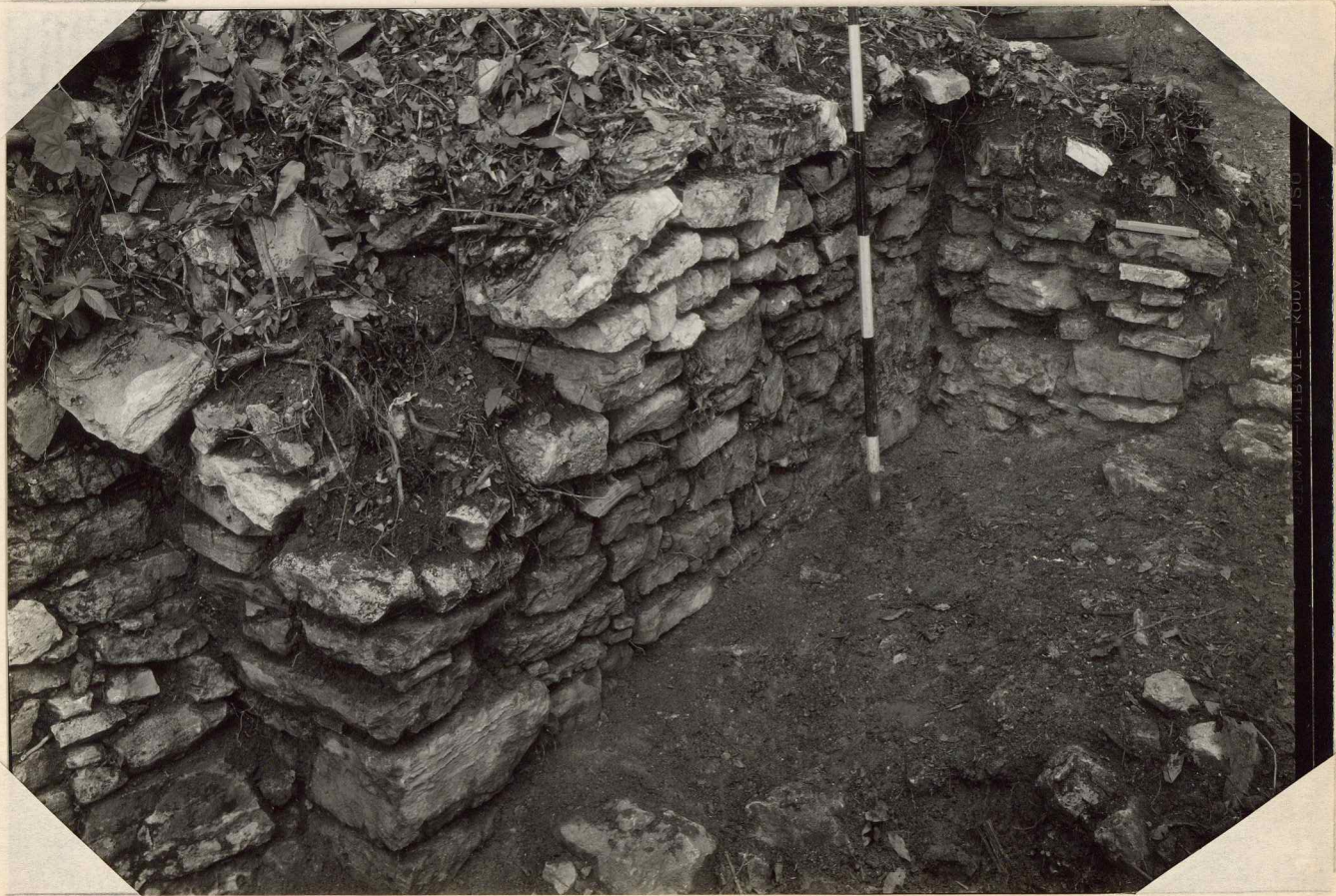
192

36-74



186

36-75



195

36-76



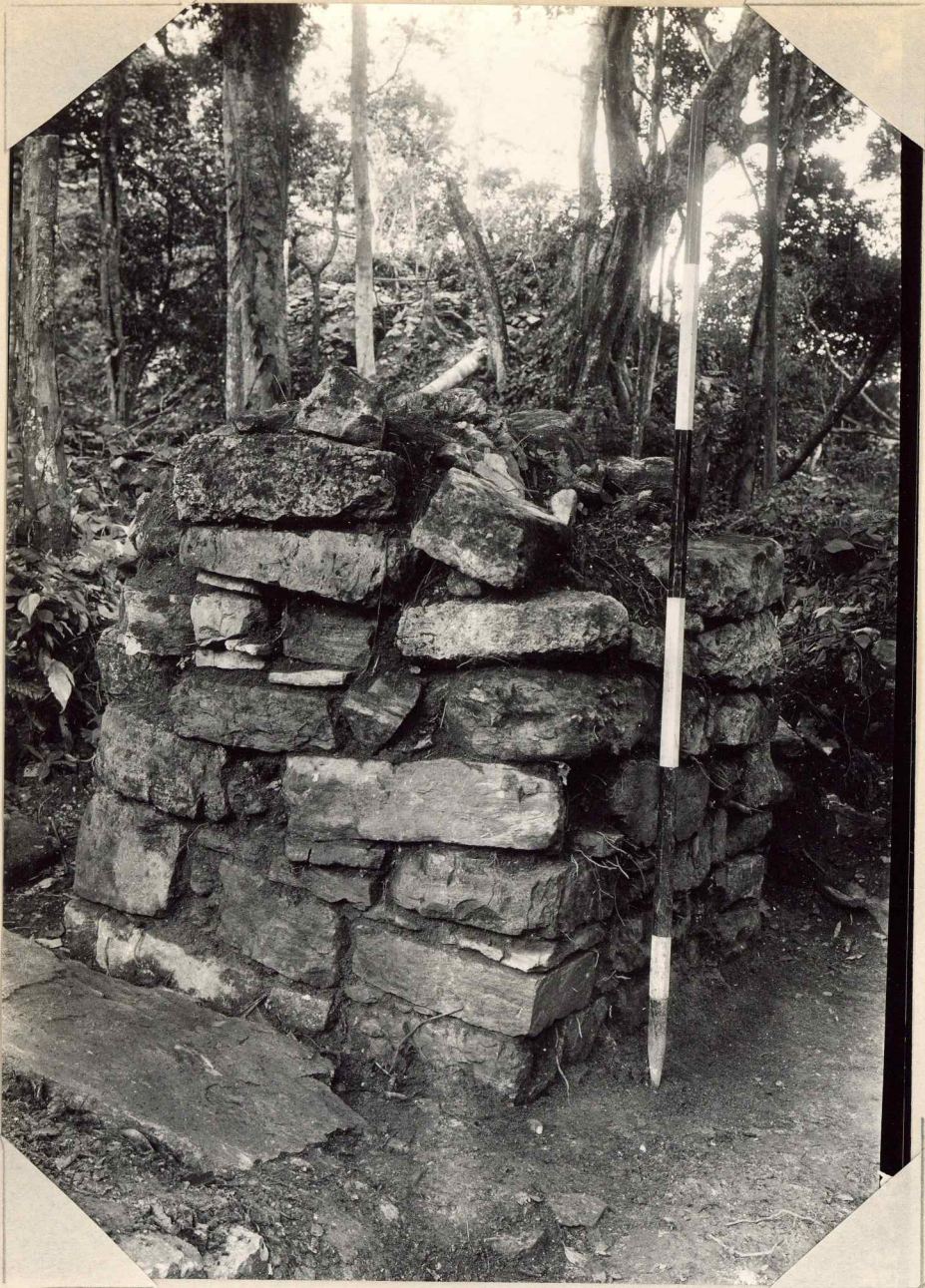
196

36-77



206

36-78



36-79

207



216

36-80



150

36-81



211

36-82



215

36-83



212

36-84



213

36-85



214

36-86



210

36-87

87

87



208

36-89

89

06



reverse film

224

36-90



223

36-91



148

36-92



149

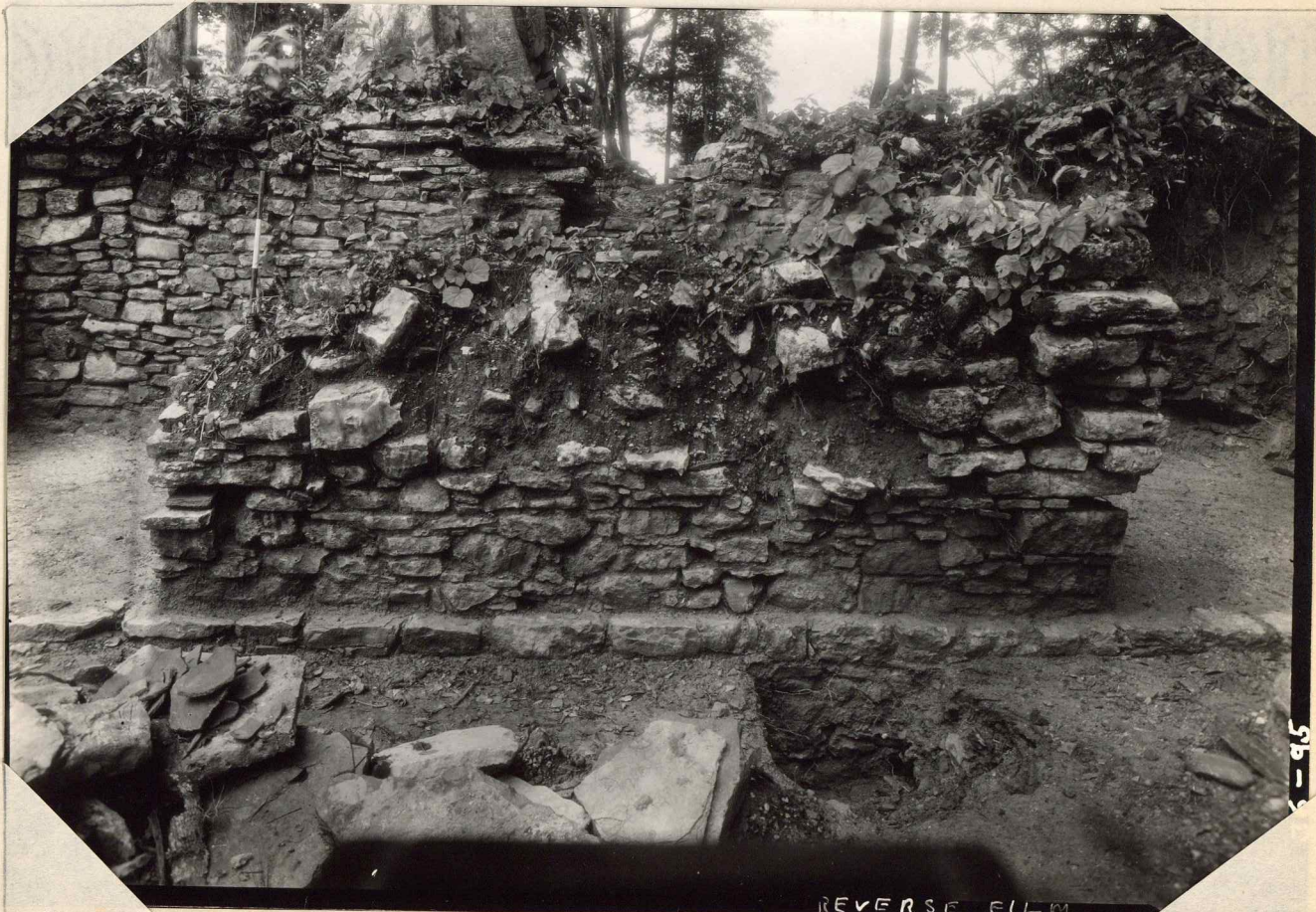
36-93



217

REVERSE FILM

36-94



218

REVERSE FILM

36-95

FASTMAN-NITRATE-KODAK

96-9



220

REVERSE FILM

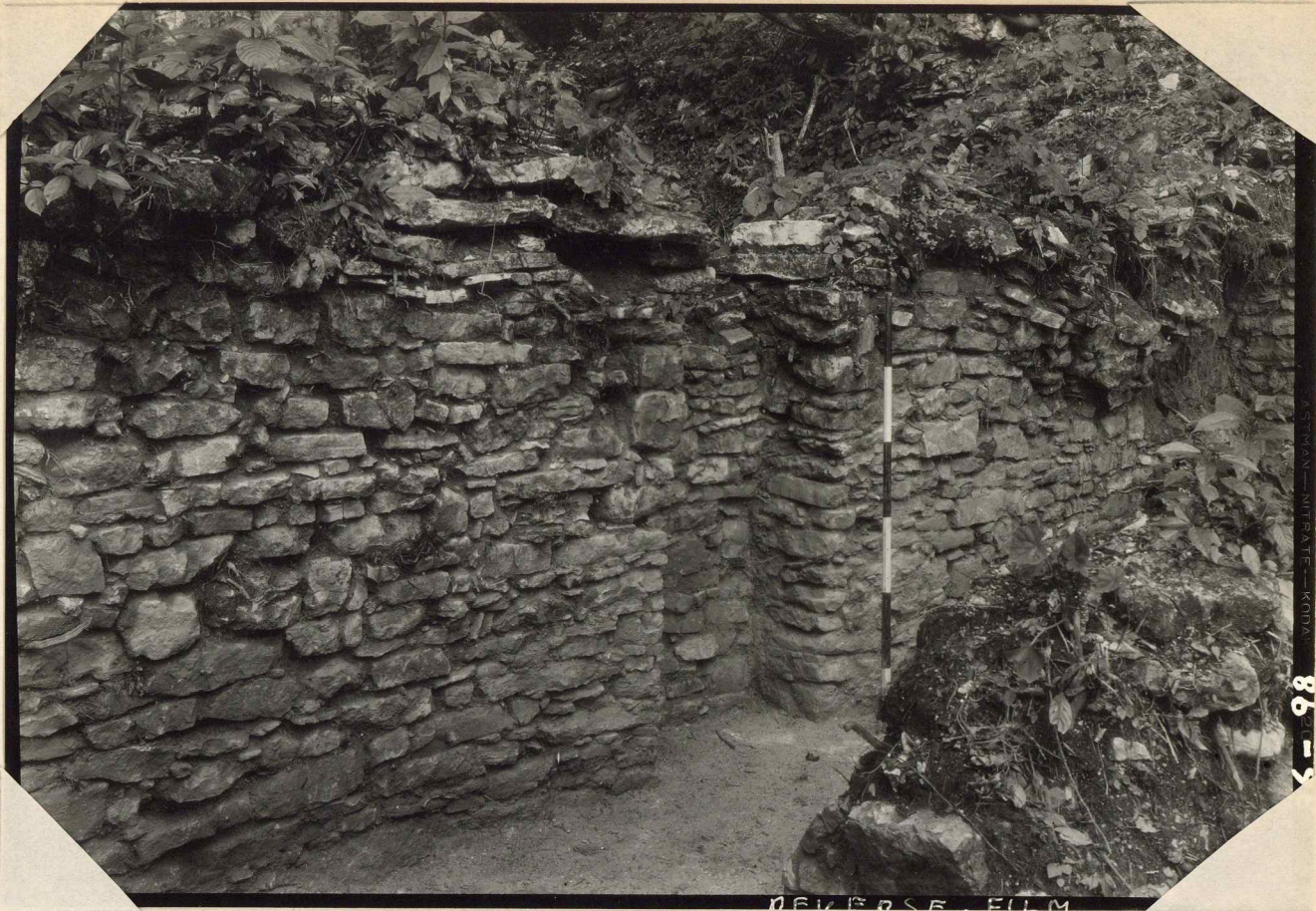
36-96



219

REVERSE FILM

36-97



222

REVERSE FILM

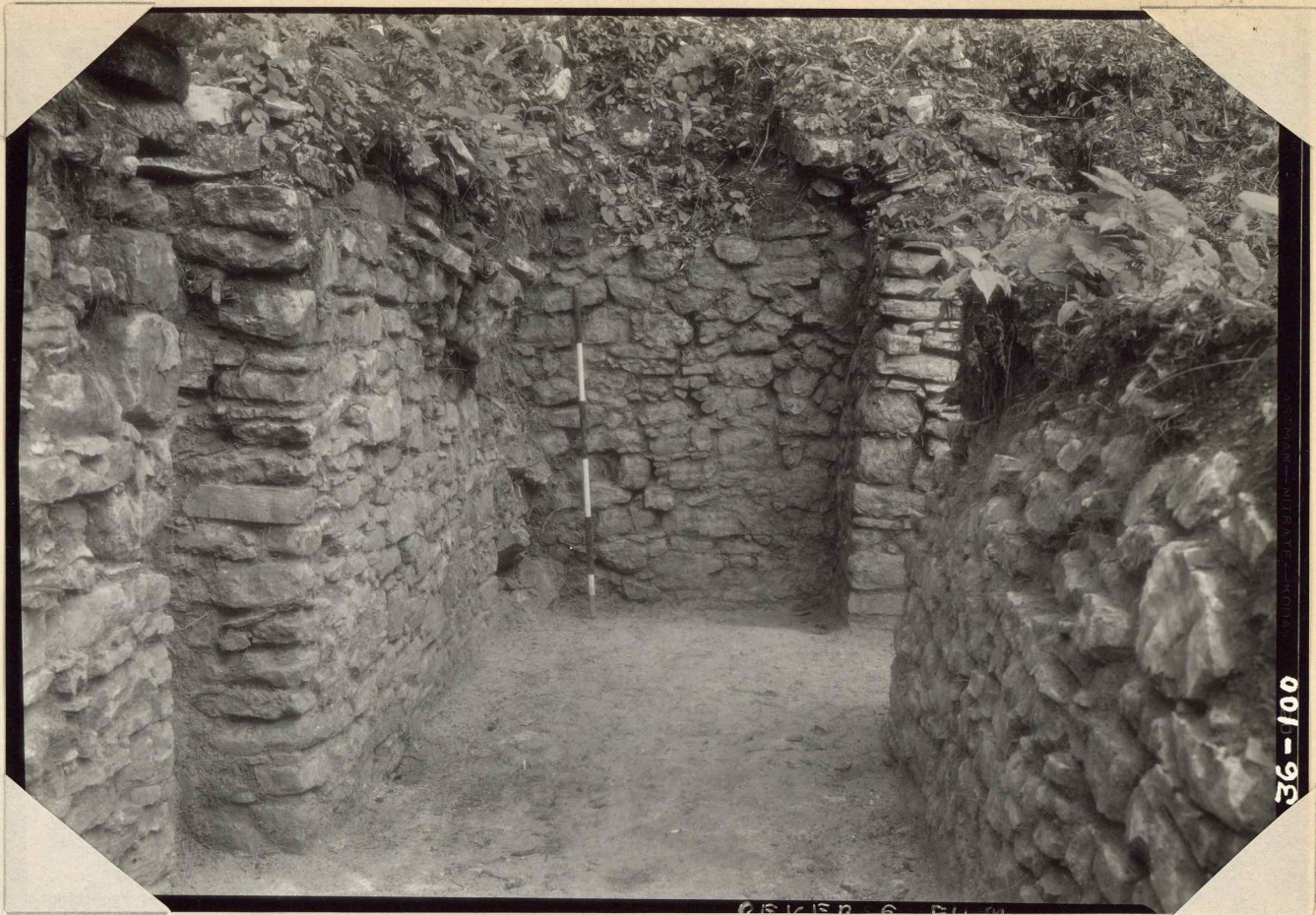
36-98



226

REVERSE FILM

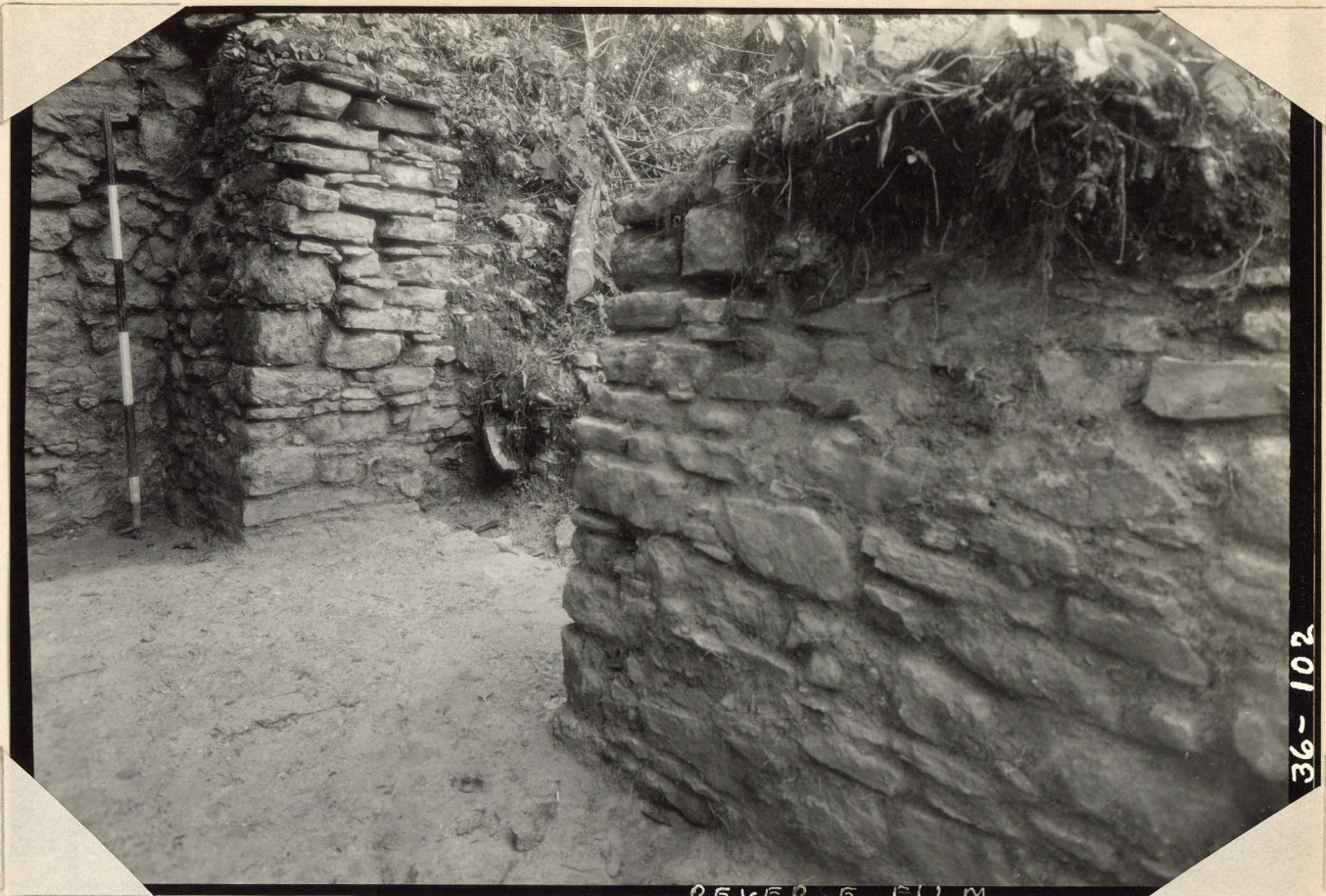
36-99



225

36-100

#101 film is missing. Covered medial wall doorway which is fairly well shown in # 92, 95, 97, 98, 101.



36-102

513

221

REVERSE FILM

36-102



103

5-18 (28)
 J-21
 -thin ex.
 wall

227

36-103

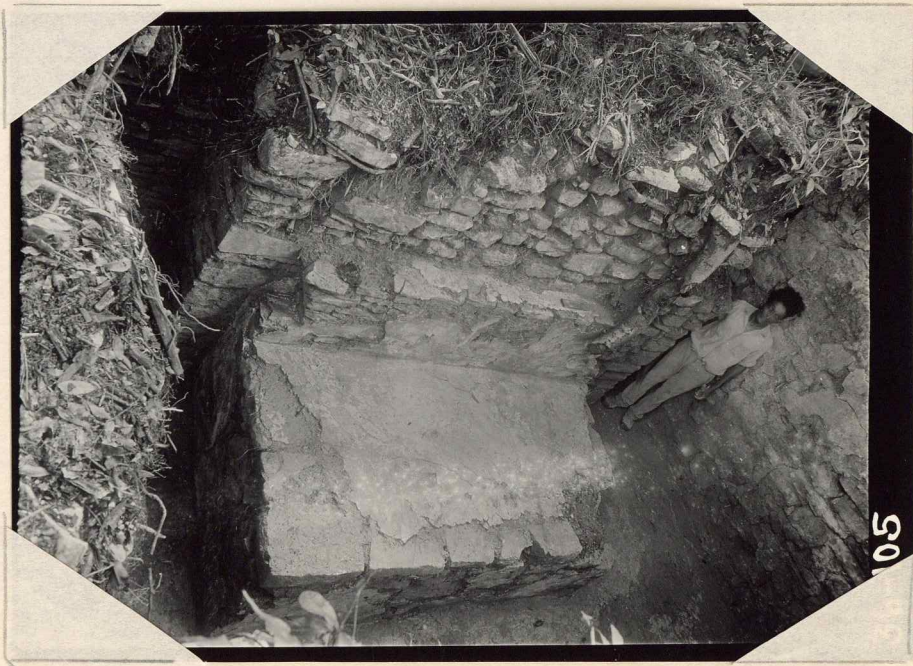


232

104

36-104

f232



238

SH 5-21

105

36-105

f238



240

f 240

106

36-106

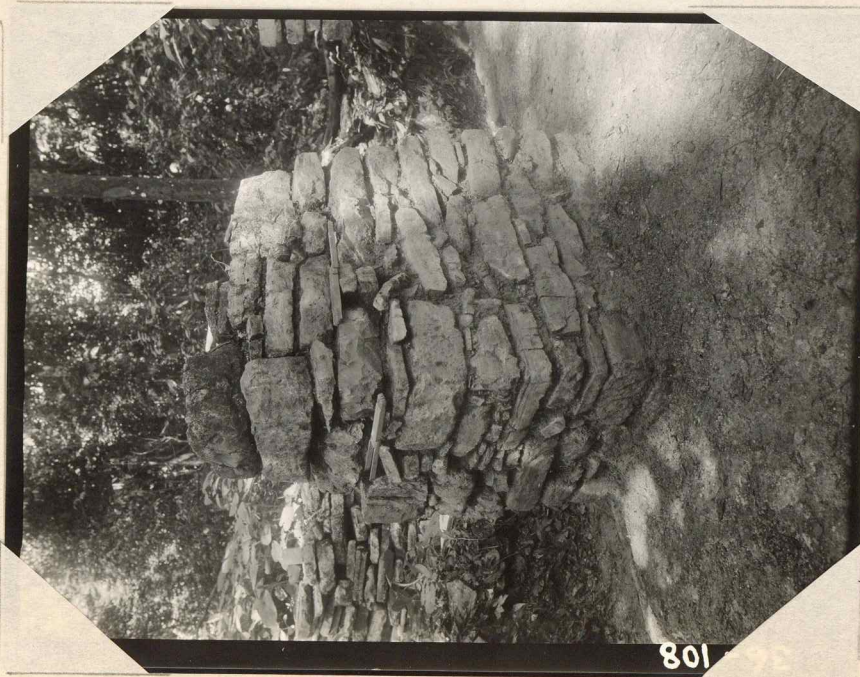


239

107

36-107

f 329



241

108

36-108



109

36-109

234



110

236

36-110

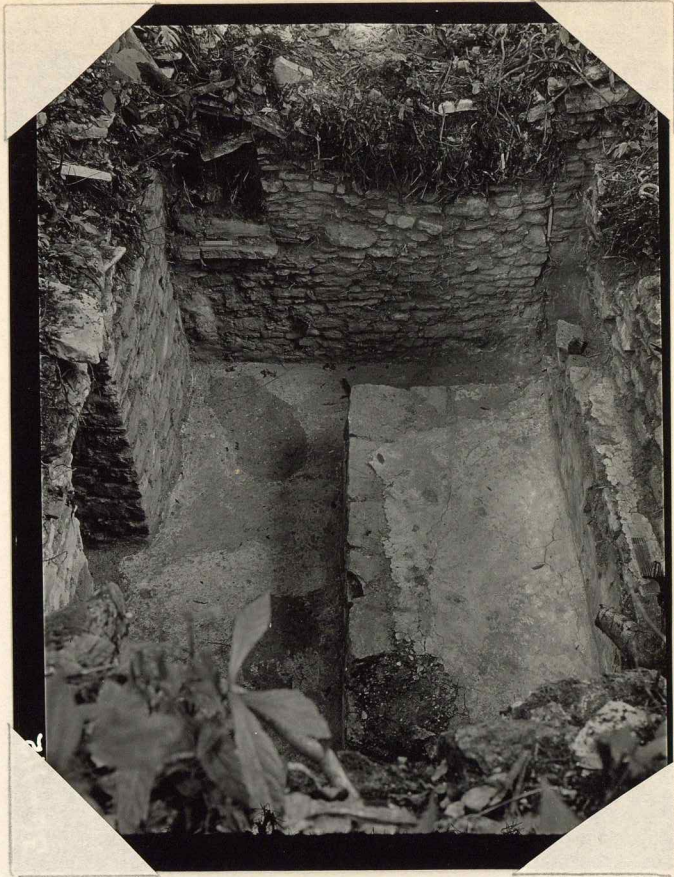


111

F 243

243

36-111



f 235

36-112

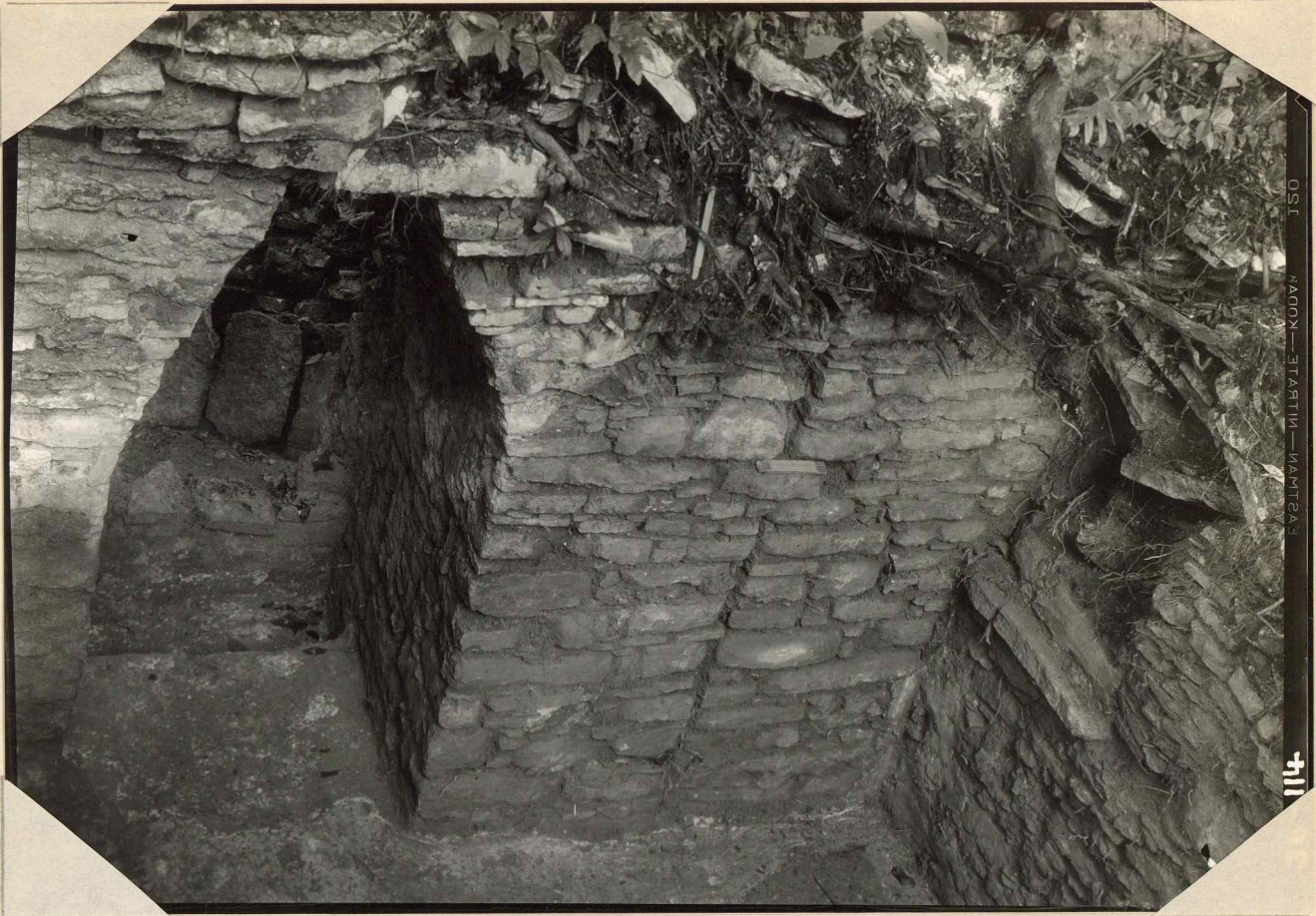


РАСЛІННИ—ПІЛ'ВЯЦІЕ—КОДОН—150

113

228

36-113



ДИС. РАЙОН — ТАБИТИ — ИМАТИГА

114

229

36-114



51

ДИС. РАЙОН — ТАБИТИ — ИМАТИГА

231

36-115



233

36-116



237

36-117

36-117



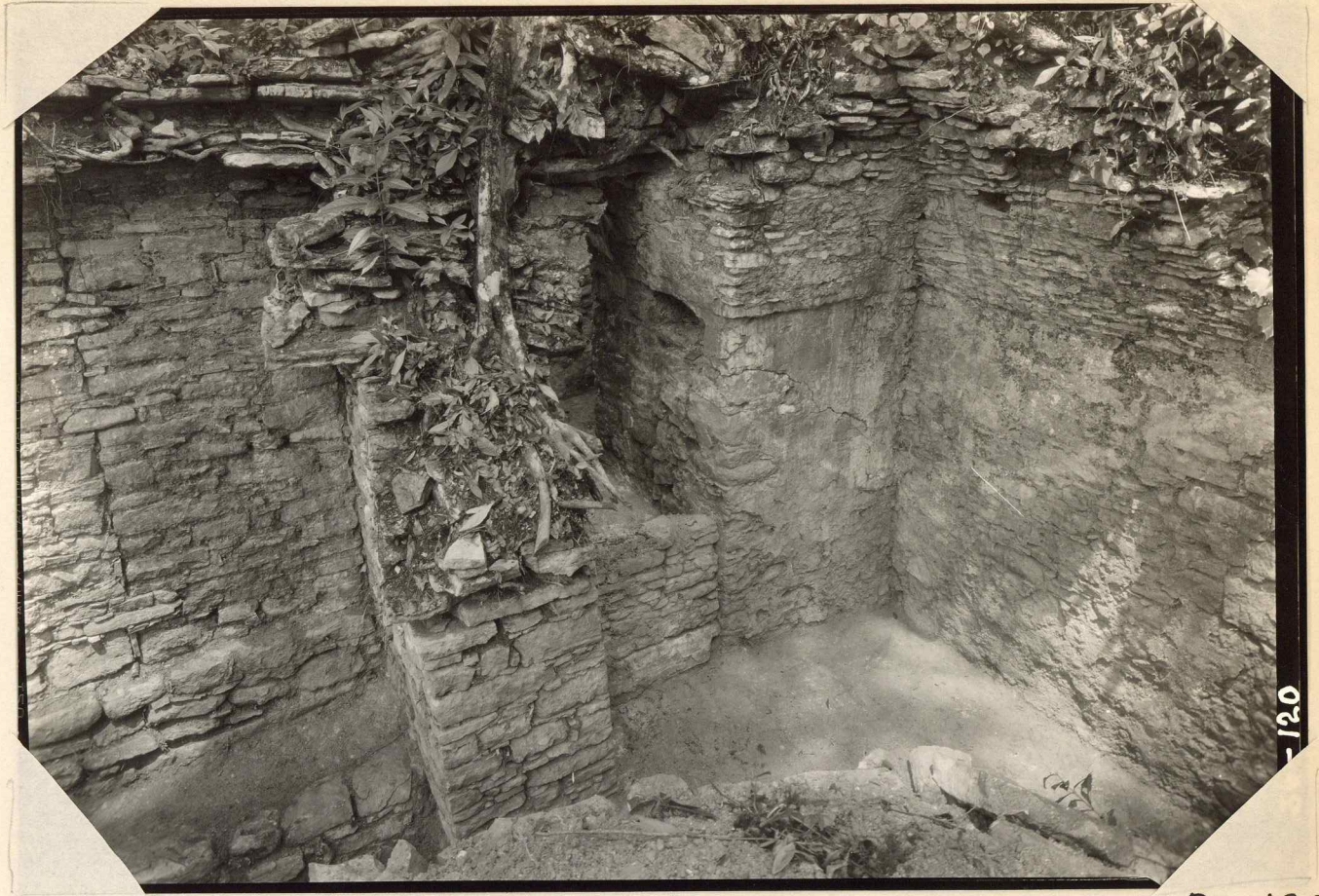
230

36-118



242

36-119



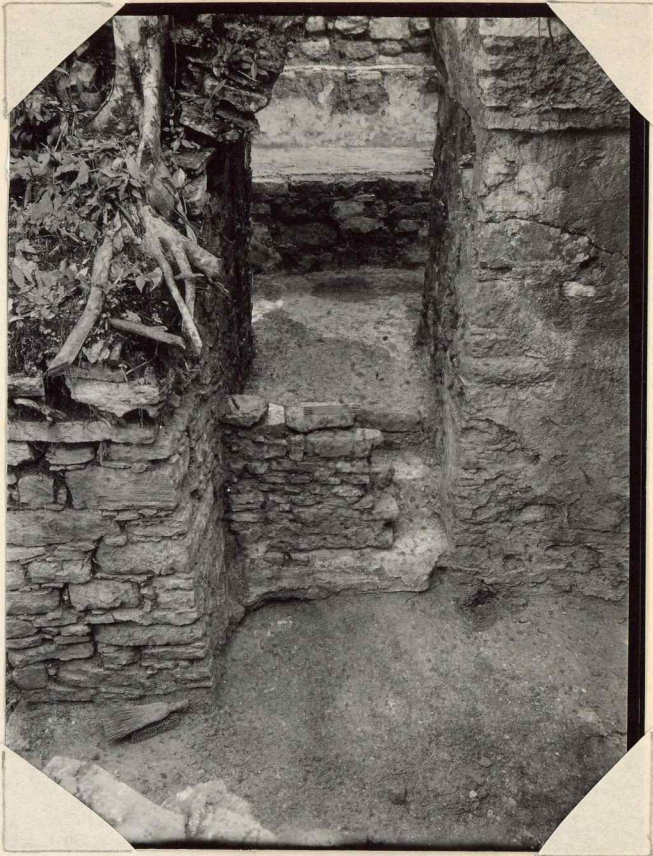
244

36-120



245

36-121



246

36-122



247

36-123