



29133

35-162



13
KODAK SAFETY FILM

16944

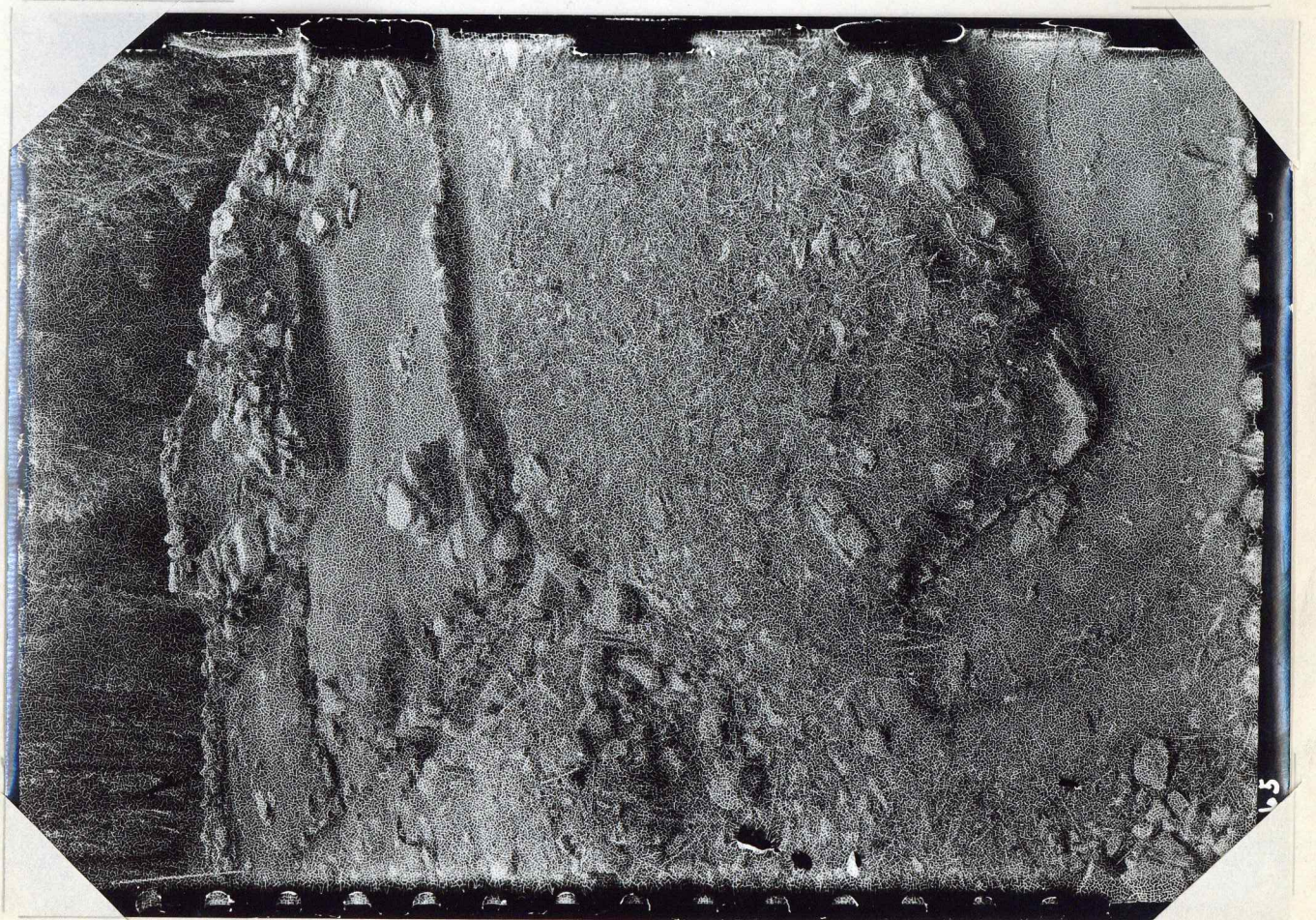
35-163



MILWAUKEE-KODAK

35-164

35-164



35-165

35-165



35-166



35-167



35-168



35-169



35-170



35-171



172

35-172



173

35-173



174

35-174



175

35-175

35-176 not used

35-176-blank
number



177

Fig 21

35-177



178

35-178



16958

35-179



35-180

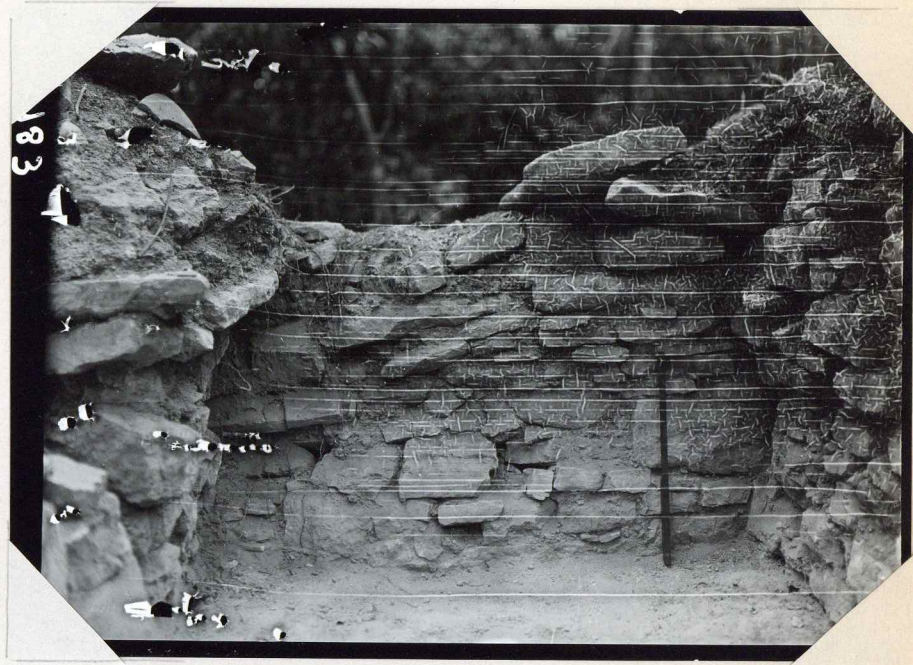


35-181



182

35-182



183

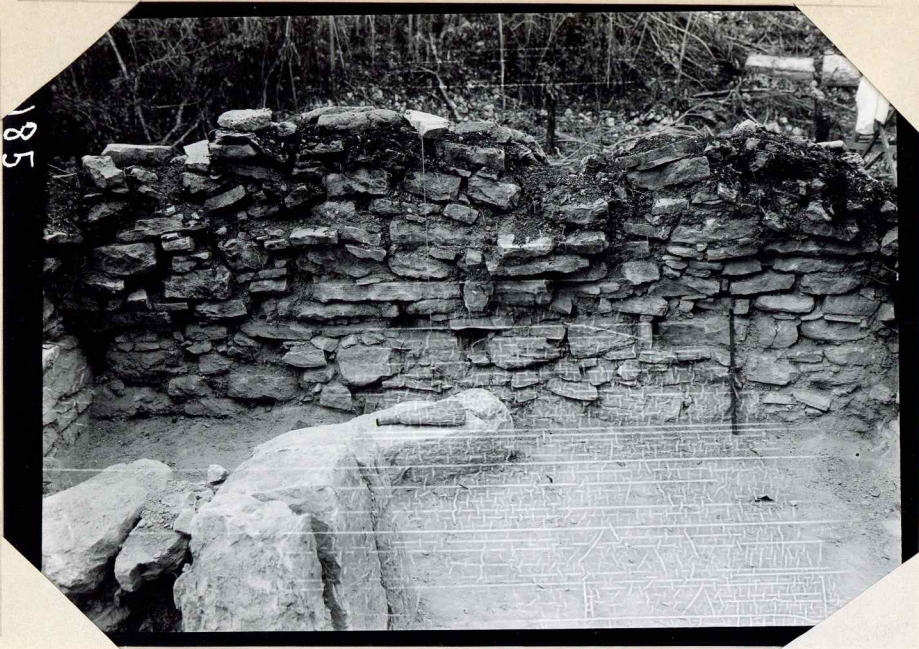
35-183



184

16963
35-184

16963



185

35-185



188

35-186



187

35-187



188

169-68
35-188

R. 19
22



189

35-189



190

35-190



191

35-191

F123



192

35-192



193

35-193



194-

35-194



195

35-195



196-

16976
35-196



94

35-197



95

35-198



99

35-199



35-200



35-201

35-201
16981



-202

35-202



Fig 17

35-203



35-204



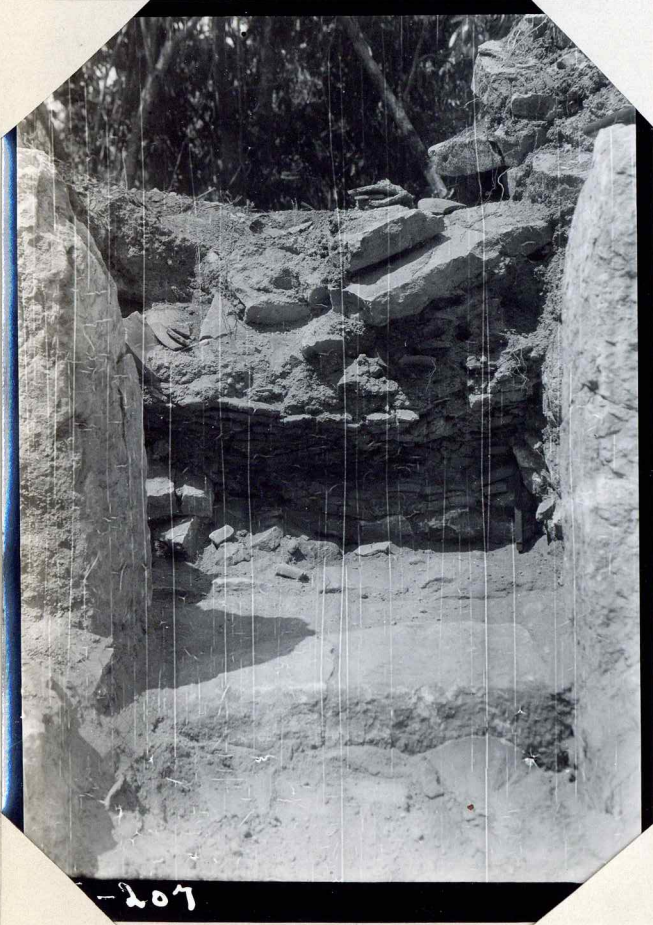
35-205



206

35-206

Fig 20



207

35-207



208

35-208



35-209

Fig 19



35-210



35-211



212

35-212



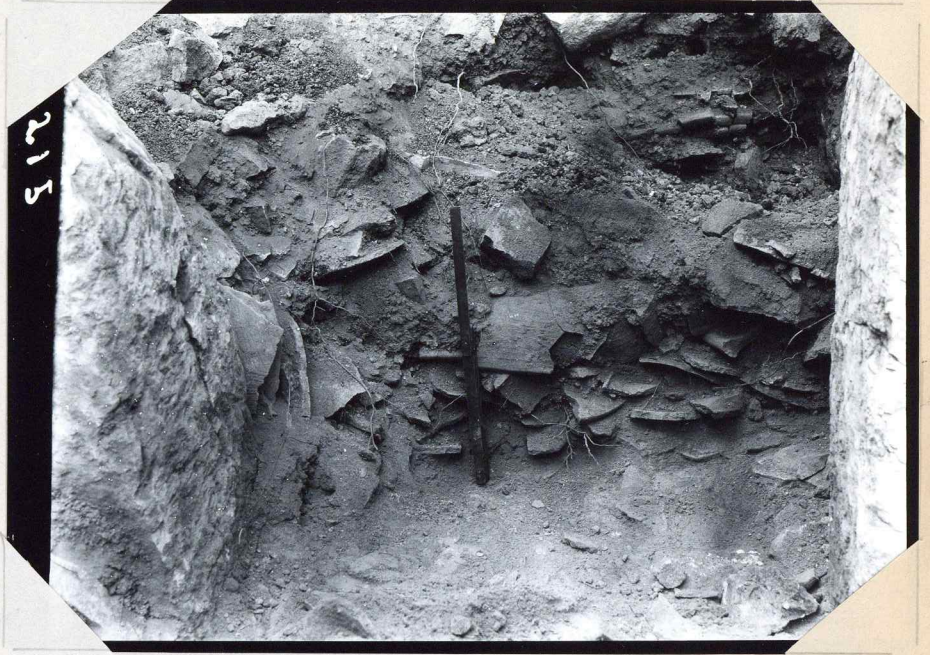
213

35-213



35-214

35-214



35-215

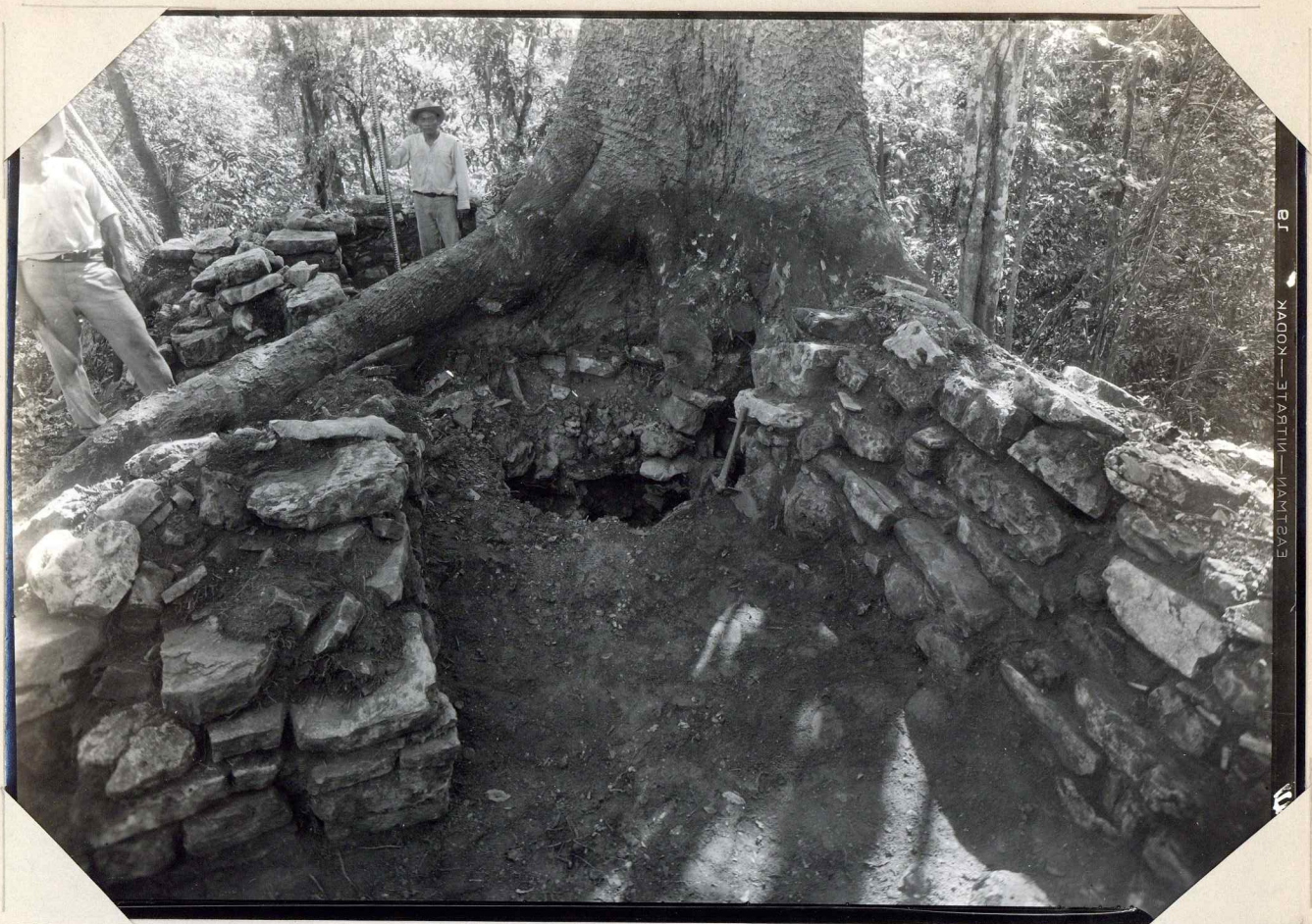
F14
18

35-215



35-216

35-216
16996



35-217



35-218



35-219



35-220



35-221



35-222

NOTES

Film No. Locus From Direction

~~35-11~~
35-12
(LS 177)
J-6 SE

Rear corner of Rm 2 showing portion merging in earlier thin partition which runs against buried vertical wall parallel with J-6.
In latter note thick mortar bet ween stones. It has fleeces of charcoal and of whole lime in it. [means of un-burned limestone?].
Stone is tabular to slabish, with one block showing. Chinking with irregular small stones, not little slabs.
Partition is no very good masonry -
Small slabs (none as long as in rear wall) & fewer blocks: thick mortar, but yellow.
Same type of chinks as side fillers, but no chinking observed for bearing (this occurs 3 or 4 times in rear wall; the exposed areas are about the same. SEE 35-13.

-13
(LS 178)
" SE

Direct view of masonry of rear wall, with post removed. See remarks on ~~35-11~~ 35-12.

14
(LS 53)
J-6+7 NW

From dump in front of Str J-9, 3.00 left of front doorways, and at J-9 level, 1.00 front of tenace. See remarks, 35-15.

-15
(LS 52)
" SE

From Tower. Boy with rod left near corner of "House 1" [~~Acrot~~ = Sub-Acropolis Str 3; ~~Court~~ Sub. Court 1 Level Str 3;]
Range-pole at other ^{rear} corner.
We have buttressed near end of retaining wall at front with rocks, at base. This wall is seen first (?) as vertical section, then as horizontal, then vertical.
Near meter-stick, folded, on floor of Sub-1. Beyond trench [] props rest on same.
Note line of rough stone behind retaining wall just left of stick
the other stick is on transverse tenace of other year - but note at left it rises toward J-7-1st (but not where stick is).

-16
(LS 52)
" "

Similar view to 35-15. Same remarks. Range pole is on line of inner (first) stairway

Film No.	Locus	From Direction	NOTES
35-17 (LS 35)	J-6+7	SW	gen. view. Hammer handle marks outside break of wall. Rod on plinth at left rear corner of "House A" [Sub-acc. Str. 3] + No (= note ³) J-7-Sub-2 floor on top of this corner.
-18 (LS 36)	"	see →	gen. view. Looking down from point on tower 1.00 S.W + about 2.00 m. behind junction of partition between Roms 2 + 3 of J-6 with its rear wall. Boy stands on floor level below + beyond left end of "House A" (off. Acc. Str. 3.)
-19 (LS 408)	"	S	gen. view - terraces under "House A", from tower. [They are over, and under "House A" - they are under Str. J-7] [rod is on plinth near its "left" corner - left front of the originally long platform]
-20 (LS 188)	"	SE	Cut-section of stairway fills over "House A" - with elevation of terraces with J-6 resting on J-7-Sub 2 floor [almost surely this oblique to 35-25]
-21 (LS 50)	"	S	✓ Folded masonry on terrace of J-7-Sub-2 (?) which becomes sub1 above stump (?) Boy stands in front of same, (wall cut by trench) with rod on "house" plinth (at least on house floor level). Rear corner of house at right; see range pole. left for ground: remains of stairways, cut from behind. [outside frame]
-22 (LS 51)	"	SW	Same wall, front view (it is battered).
-23 (LS 55)	"	W	Rod in floor of "House A". Cut out of terrace outer wall, nearly to bottom (trowel) to show rough fill wall which was built first. Note that floor of sub1 (cut machete) runs under base of higher addition, both fill wall and facing. Machete at rear of fill wall. Brush on top of original (lower) terrace facing.

Film No.	Locus	From Direction	Notes
95-24 (LS 187)	I-6+7	N	Cut-section through fill. M-stick on "House A" floor against rear wall rising to S-7-Sub-1 floor; note tenace ad right [outside the frame?]. See cross-section.
95-25 (LS 186)	I-6+7	SE	Cut section through fill of I-7-Subly, on floor of "House A". Solid deposit, mostly debris from demolition of House A (included outside corner of painted plaster (??) rising toward base. [this must mean corner frag. of painted plaster in this deposit]. Stick + brush rest on it. Boy shows position of rear wall of House A. Note floor runs under S-7-1 bolted tenace wall (where it does not, at left front corner.
-26 (LS 187)	I-6+7	S	M-stick on inner face of rear wall [folded, wall of "House A" = Ac Sub-Acr. Str. 3], hammer [white + red handle only shows] behind outer [face]. Note division into three small chambers [as at first believed, when this note was made]. 2 benches at right point to <u>upward</u> and <u>outward</u> curving cluster. This is lost in digging (1933) to the other partition [as then postulated]. Its line is marked by knife. Note also that 2 right chambers [as postulated] are slightly higher than left one.
-27 (Creson, 211)	I-6+7	S	South corner of "House A" under str. I-7, from the inside showing floor, plastered house wall on left and inside of tenace wall on right. When tenace wall was constructed house floor was cut off at brush where stone projects above floor, and house wall was cut off at trowel where stone projects through wall.
-28 (LS 176)	"	NW	M-stick on cross-section of wall of "House A" [traced wall of Ac Sub-Acr. Str. 3]. Red base (?) of bolted wall on which it rests [building platform wall] to right, cross-section of very thick wall, much destroyed on inner side.

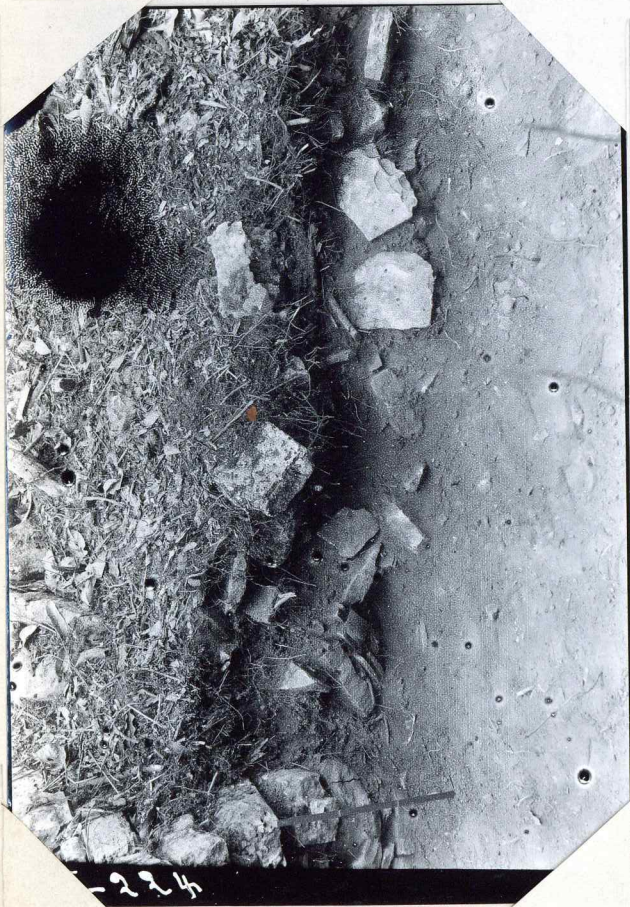


13

KODAK SAFETY FILM

3

35-223



224

35-224



3

35-225



35-226

35-226



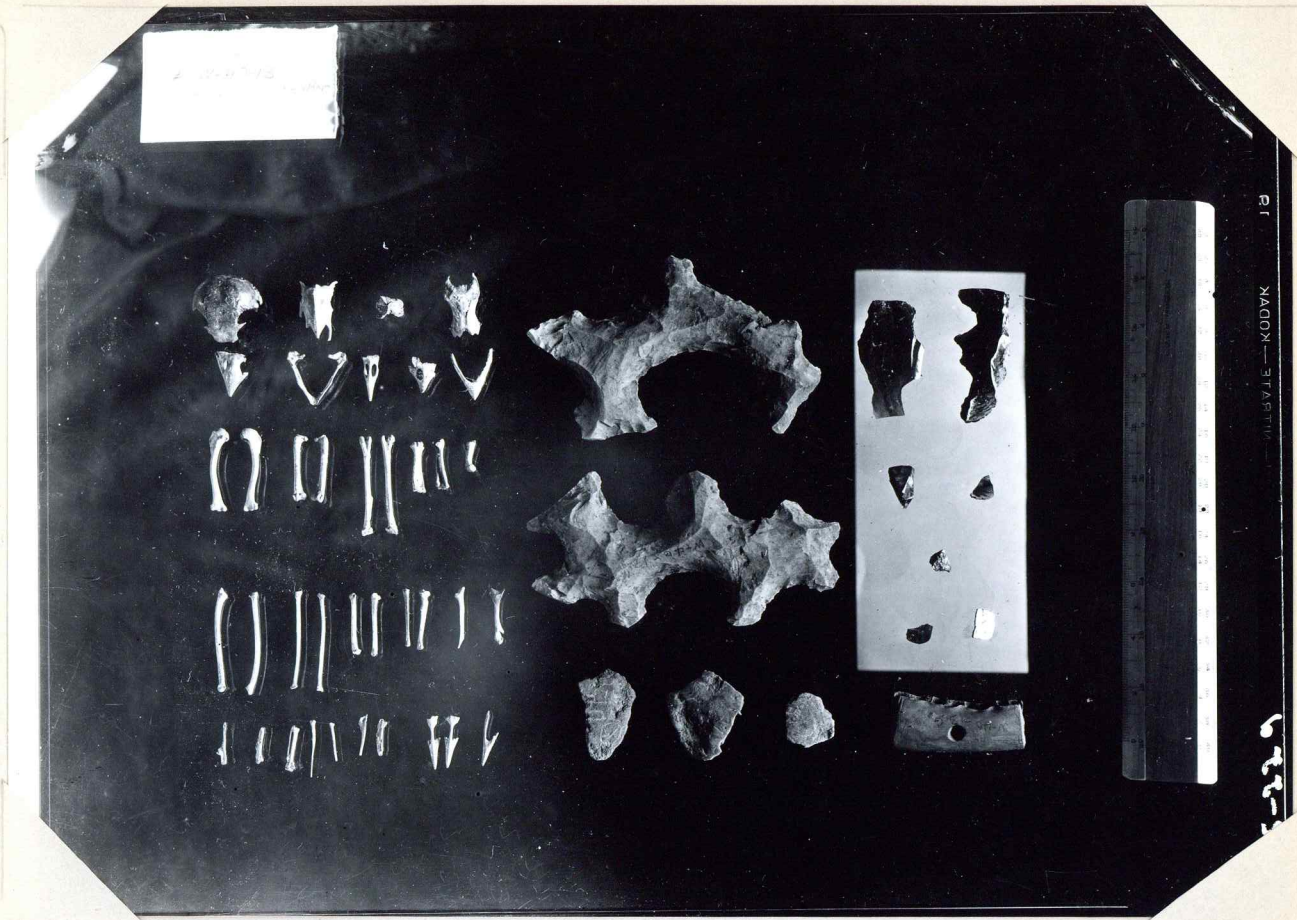
227

35-227



228

35-228



35-229



35-230



35-231



232

35-232



17013
35-233



35-234
(Pambdrenned).
17014



35-235
F586
17015



35-236



35-237



35-238



35-239



35-240



35-241



242

35-242



35-243



35-244

35-244



35-245



35-246



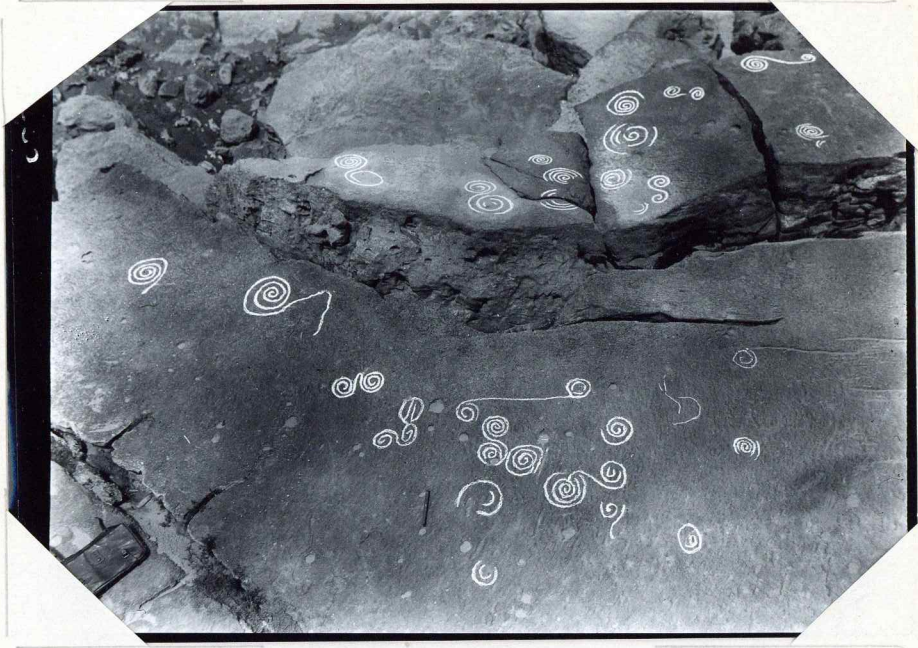
35-247



35-248



17029
35-249



35-250



35-251

17031

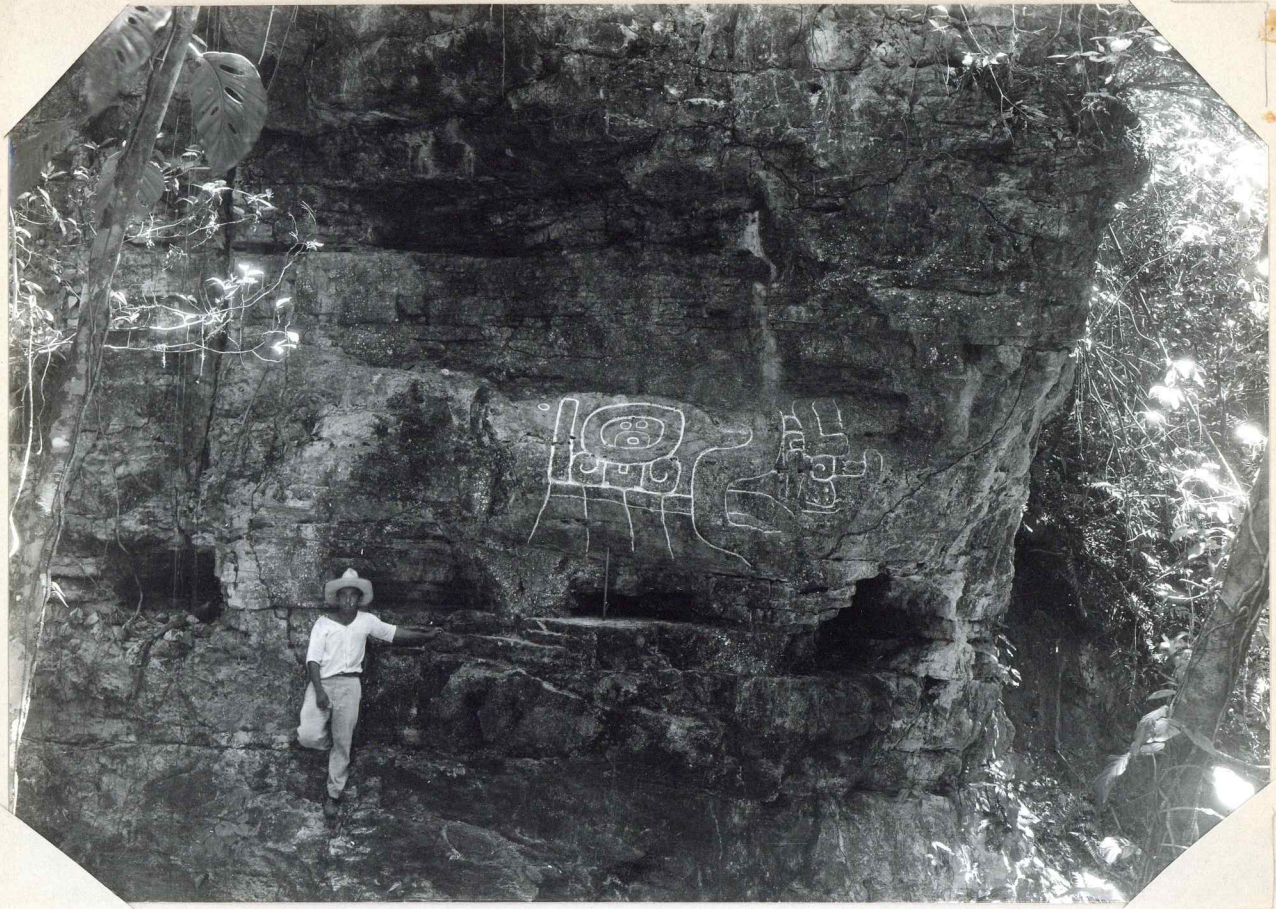


35-252



35-253

99



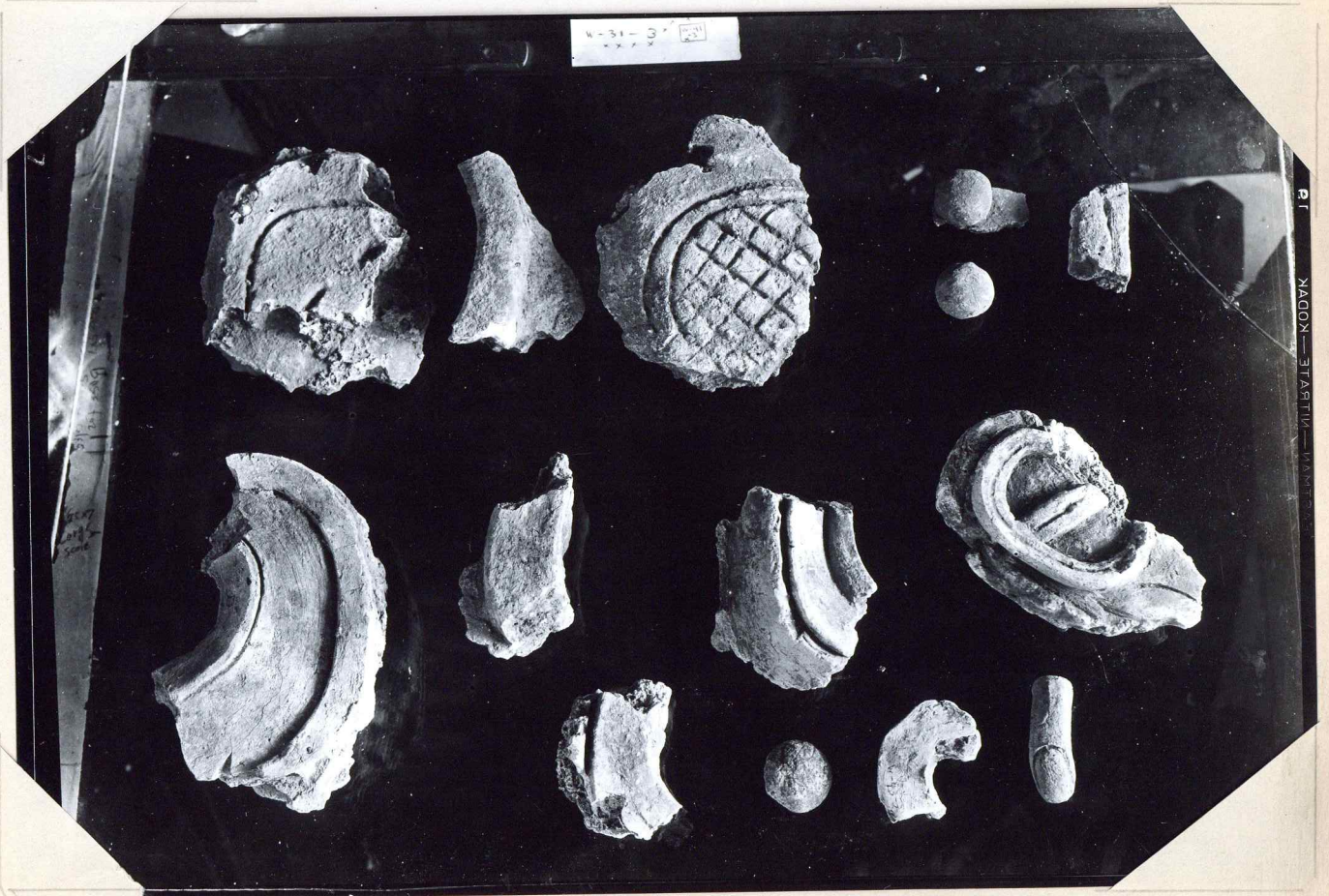
35-254

Handwritten signature or initials

35-255

35-255

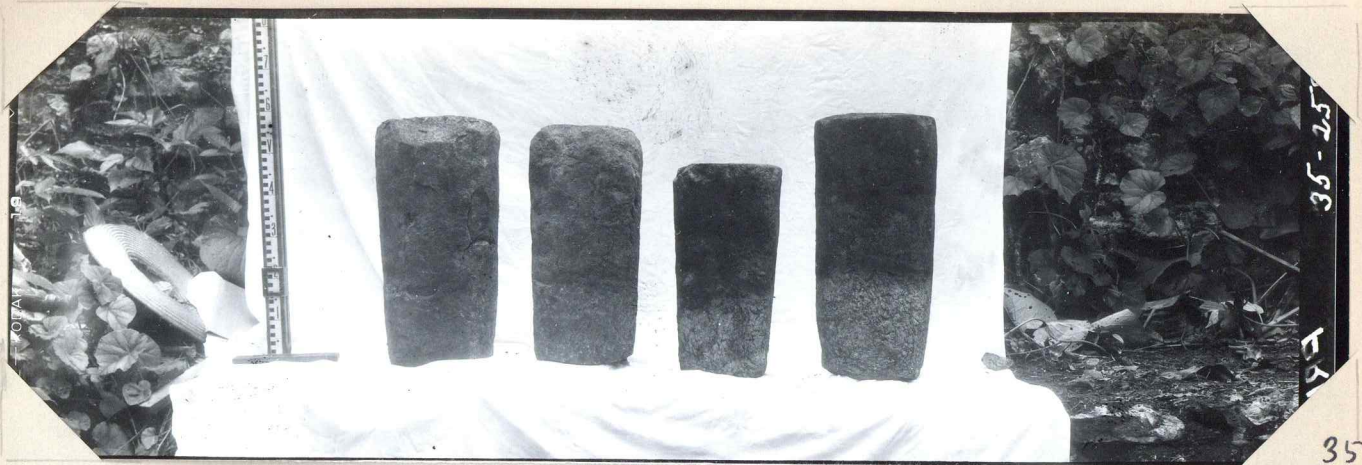
35-256



W-31-57
2272

35-257

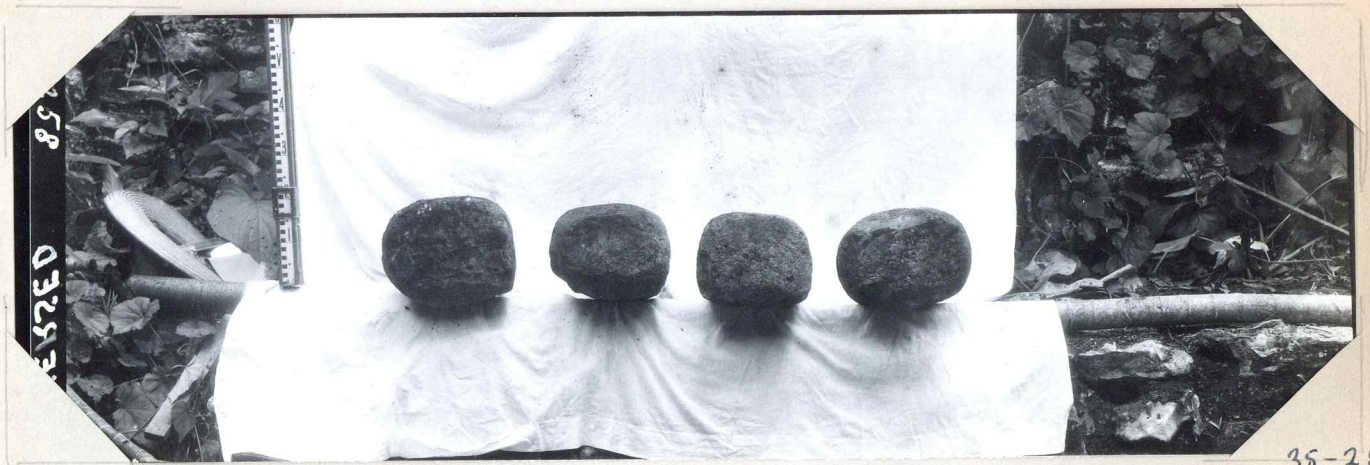
101



35-258

35-258 (a)

K-5-2 rear



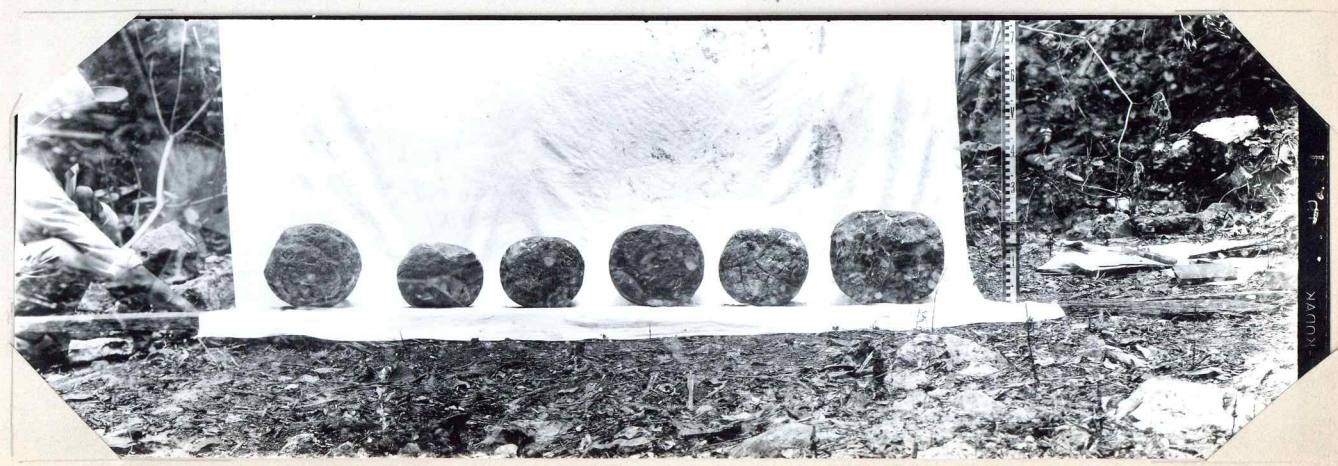
35-258

35-258 (b)

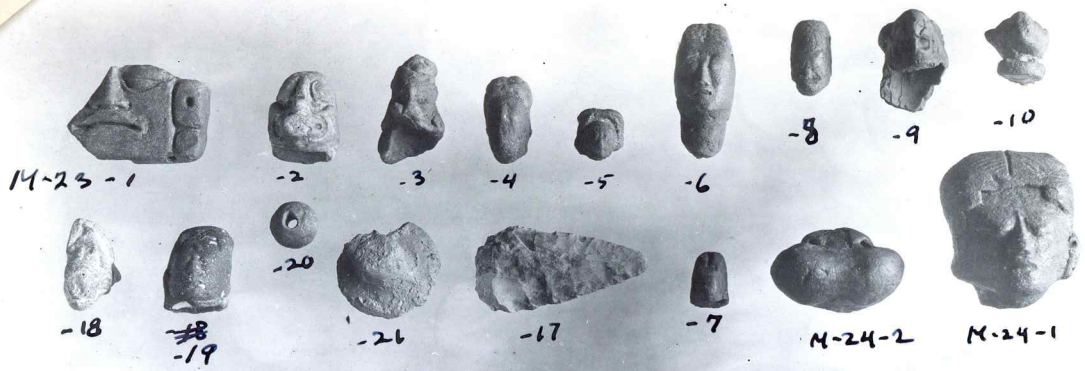


35-259 (a)

R-1 R-2 R-3 R-10 R-16 R-9

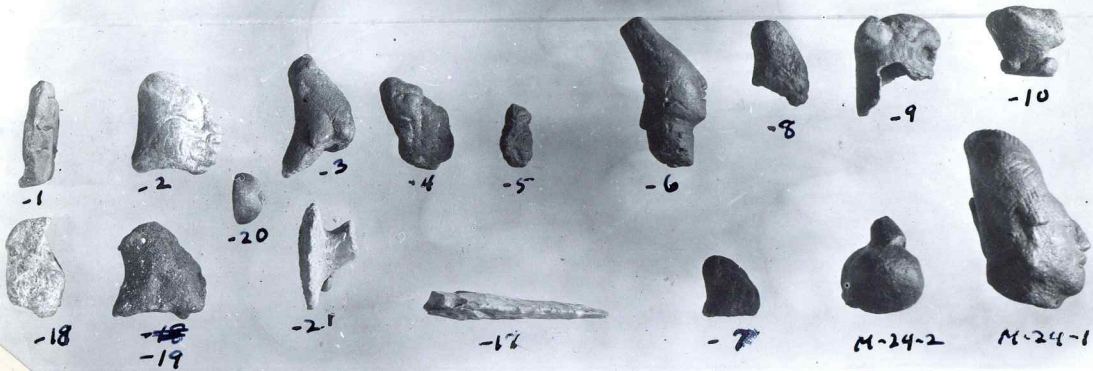


35-259 (b)



Upper row,
M-23

a
Lower row,
M-23 excels
last 2.



Upper Row
M-23

b
M-23
excels
last 2.

Upper row: ~~M-23-1~~; ~~M-23-2~~; ~~M-23-3~~; ~~M-23-4~~; M-23-1 to 6; M-23-8 to 10.
Lower row: M-23-18; M-23-19; M-23-~~20~~ (whorl); M-23-20; M-23-17; M-23-7; M-24-2; M-24-1.

35-260



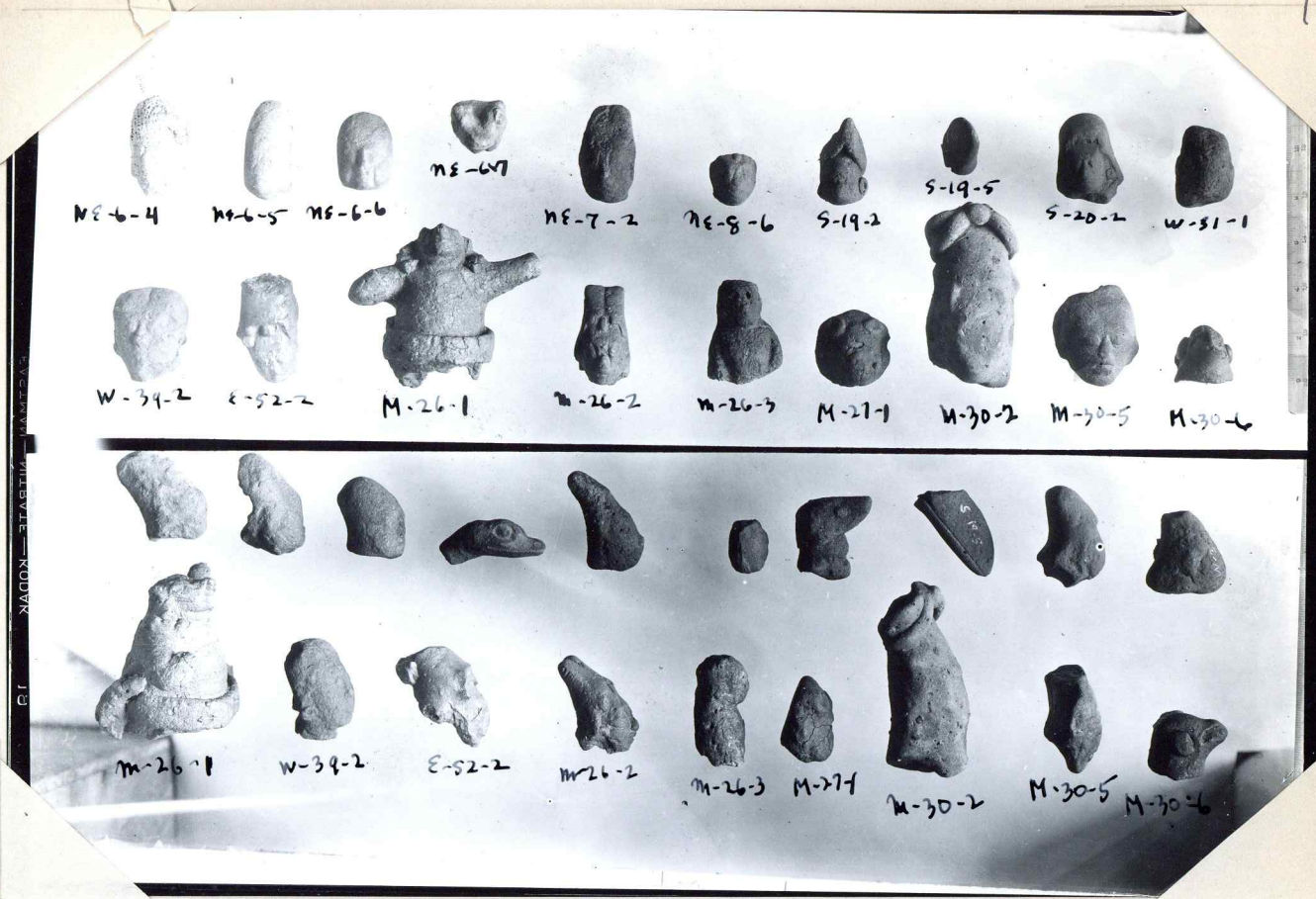
Same as 260 lower half.

35-261



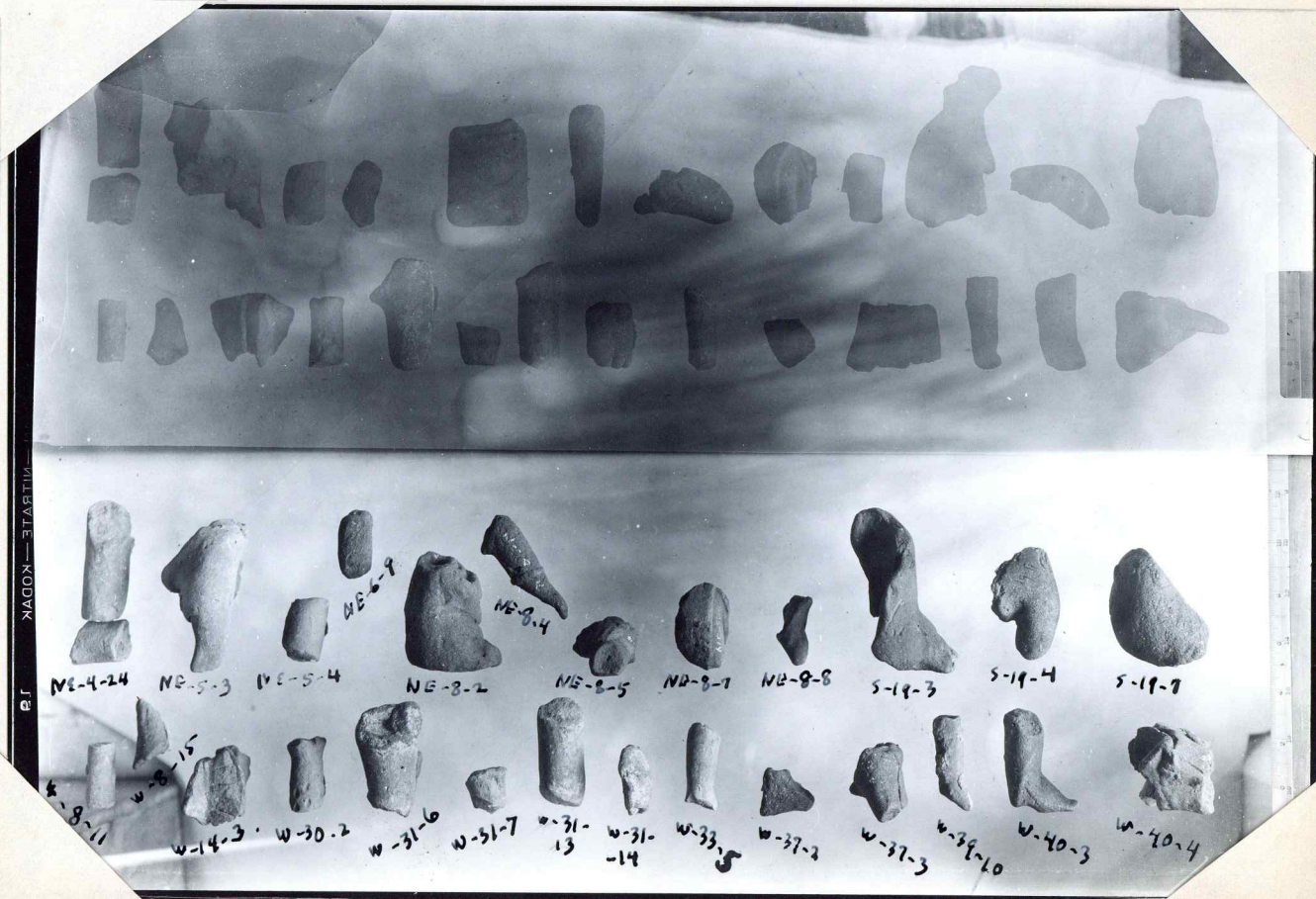
L. to R. upper row: NE-6-4; -5; -6; -7; NE-7-2; NE-8-6; ~~NE-8-6~~; S-19-2; -5; S-20-2; W-31-1.
Lower row: W-39-2; E-52-2; M-26-1; -2; 3; M-27-1; M-30-5; -6.

35-262



Numbers checked - o.k.

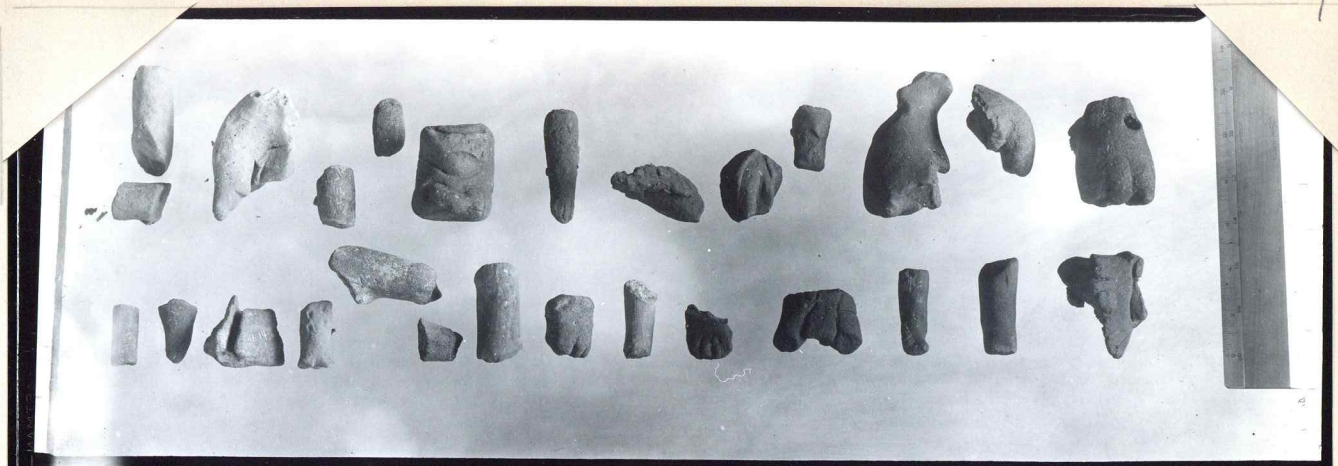
35-263



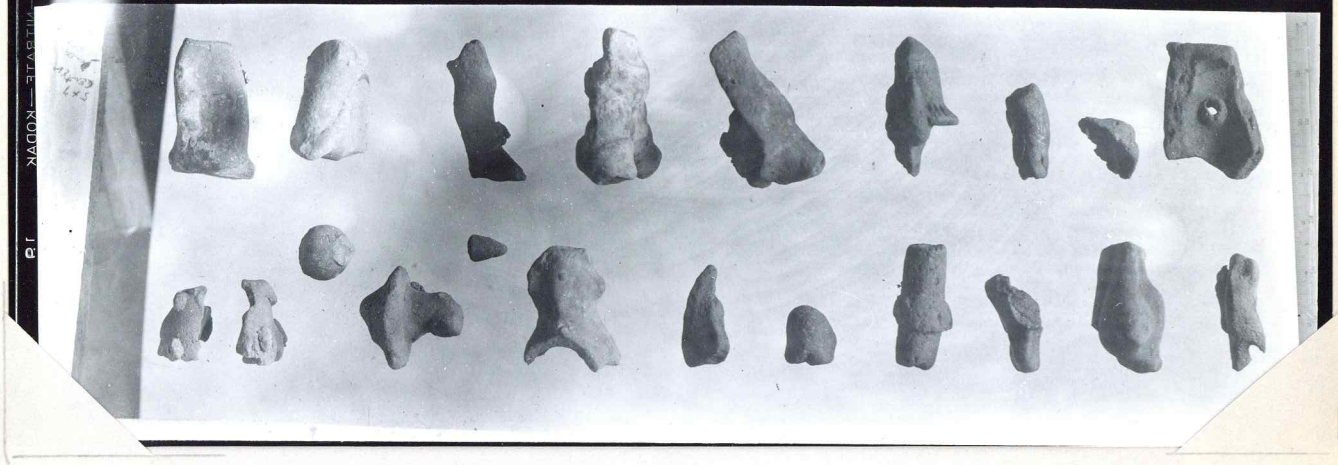
Numbers checked - o.k.

35-264 (see

see 35-264

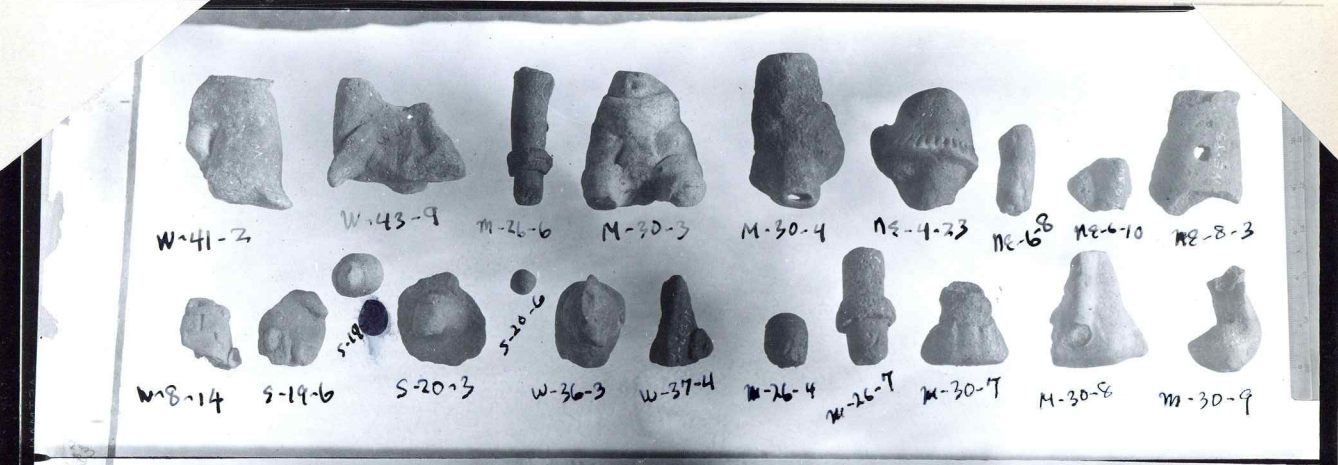


a

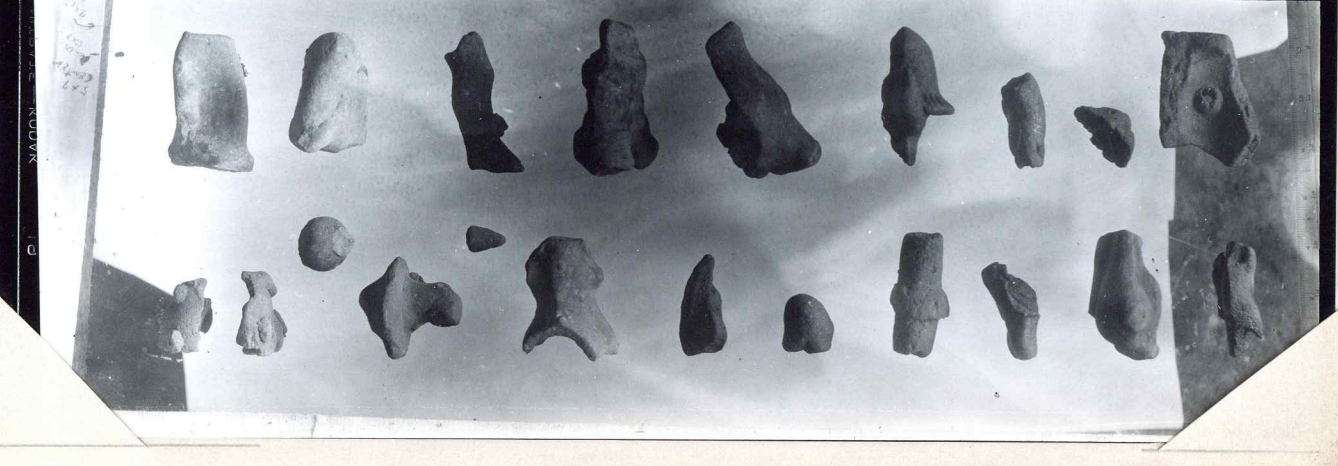


b.

35-265



a



b.

35-266

W-8-18 →

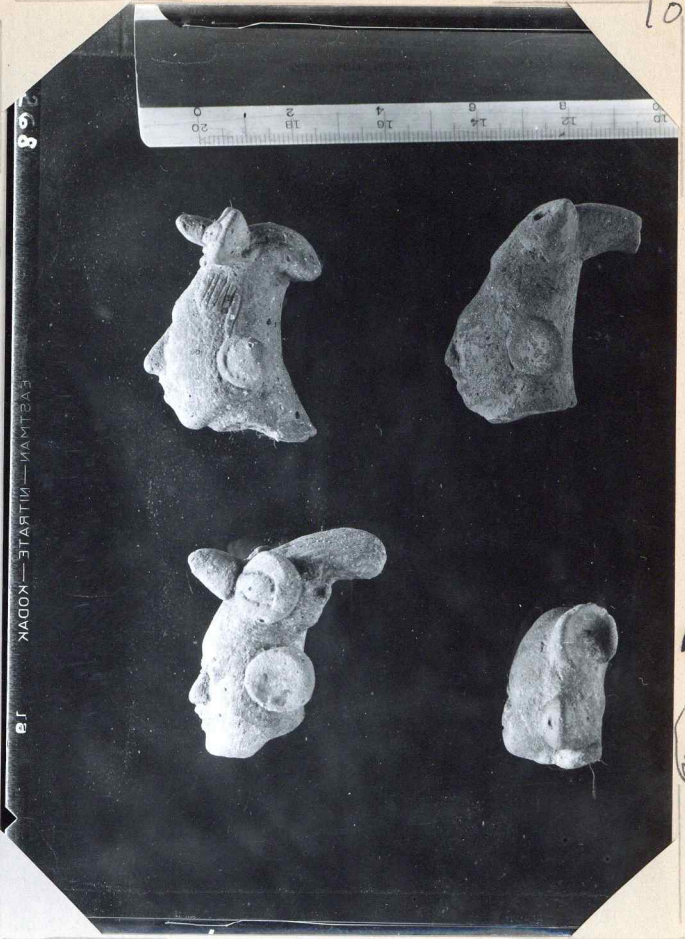
W-8-29 →



81-8-18 →
 61-8-24 →
 62-8-22 →
 14-25-1 →

35-267

105

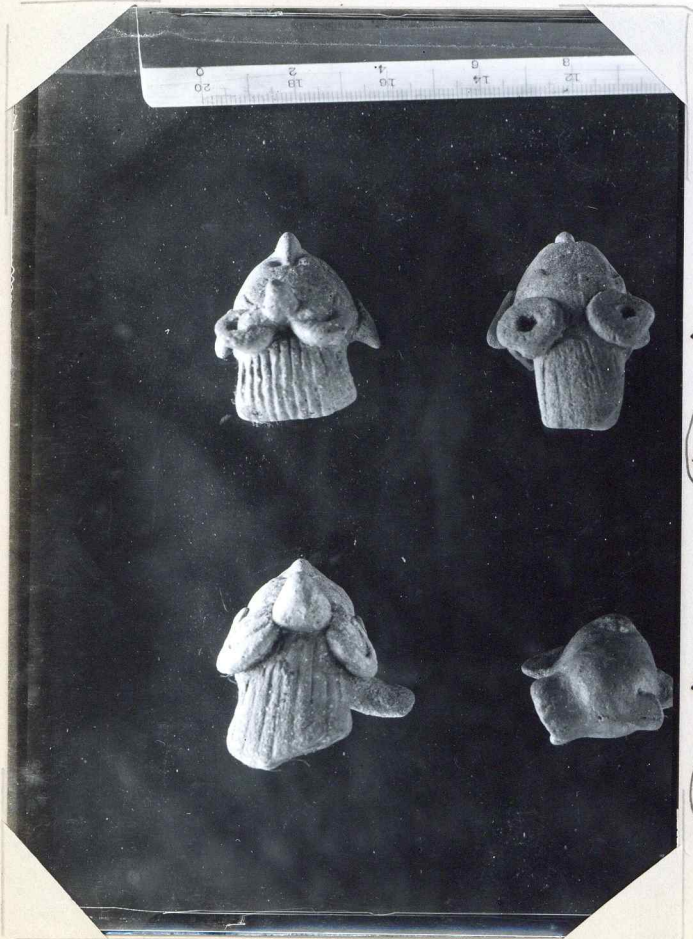


61-8-19 →
 14-25-1 →

35-268-a

W-8-18 →

W-8-29 →



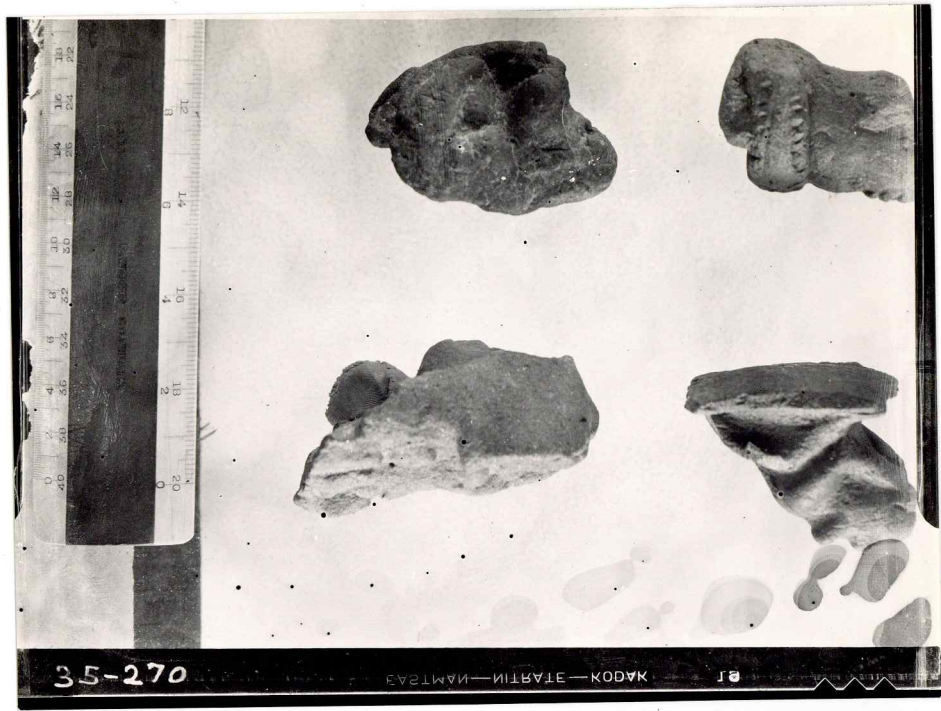
61-8-19 →
 14-25-1 →

35-268-b



61-8-18 →

35-269



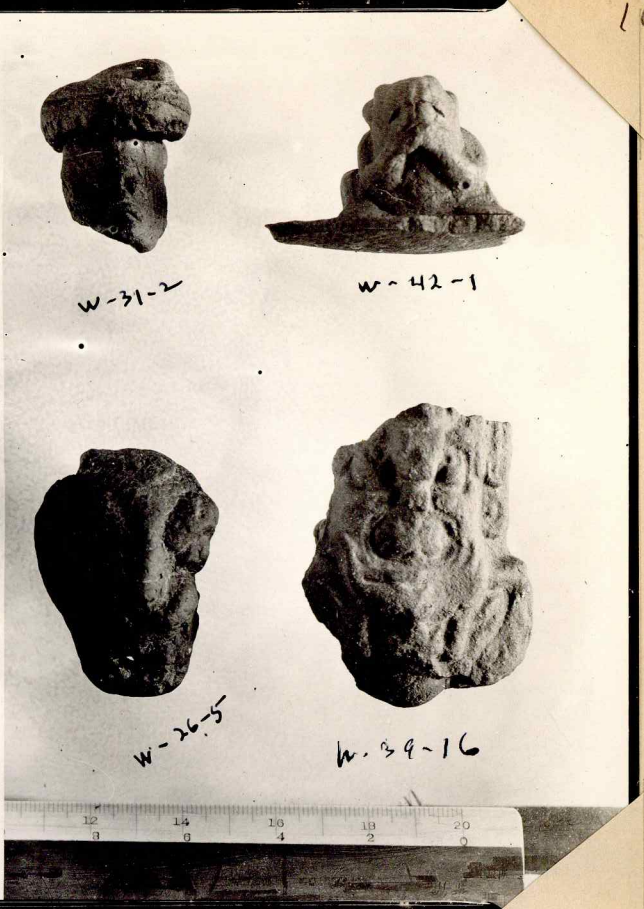
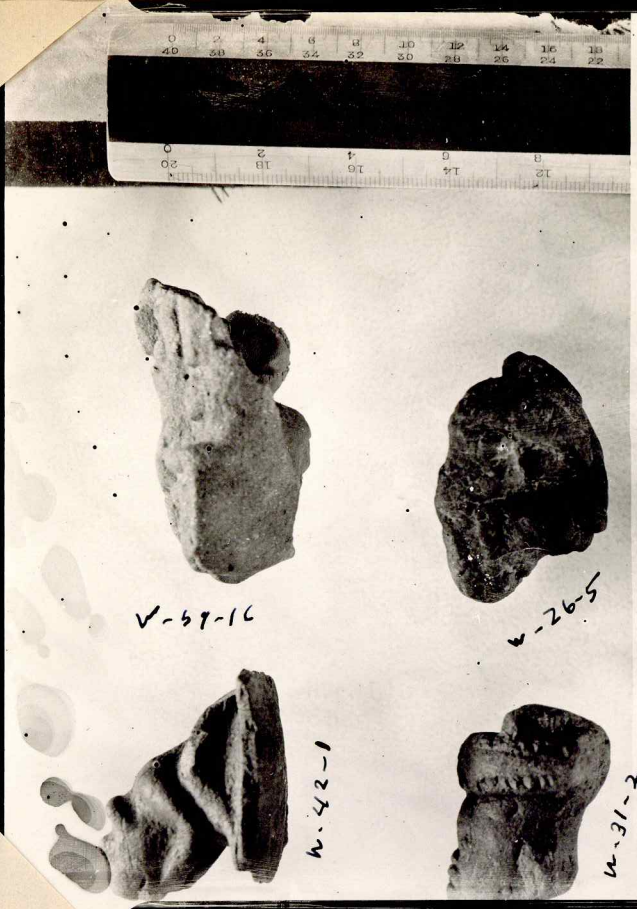
35-270

КАГОК — СТАТИН — НАМТЭЭ

18

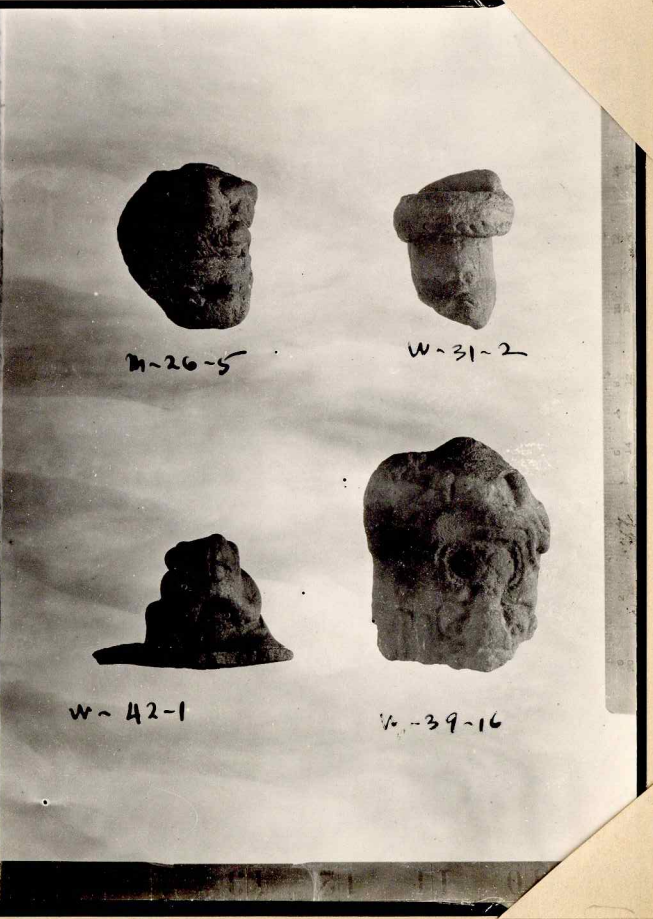
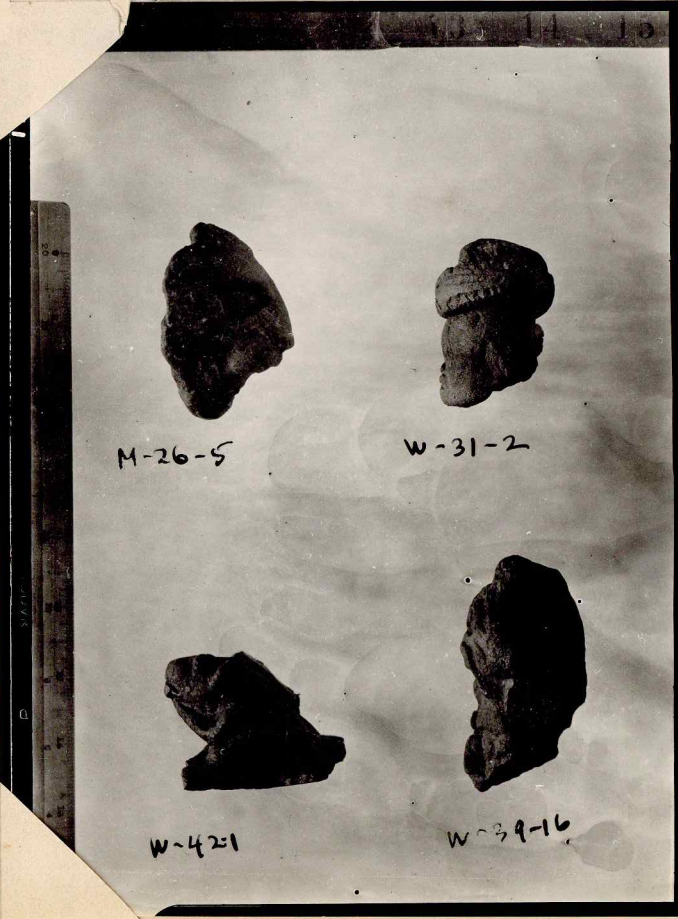
270

SAFARI—NITRATE—KODAK



35-270 a

35-270-b



35-271 a

35-271-b



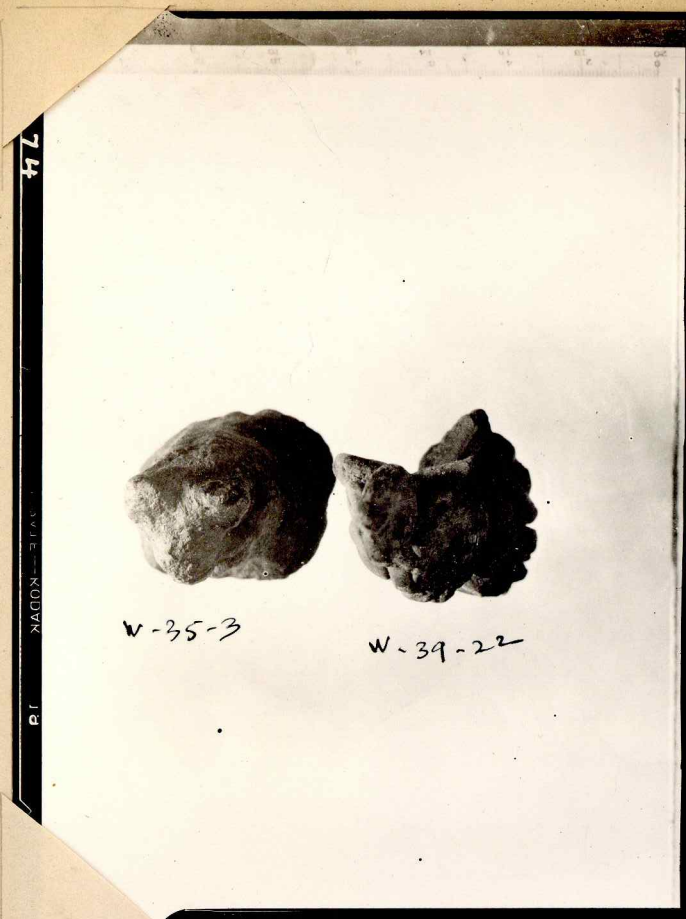
35-272



a

35-273 a & b

b



W-35-3

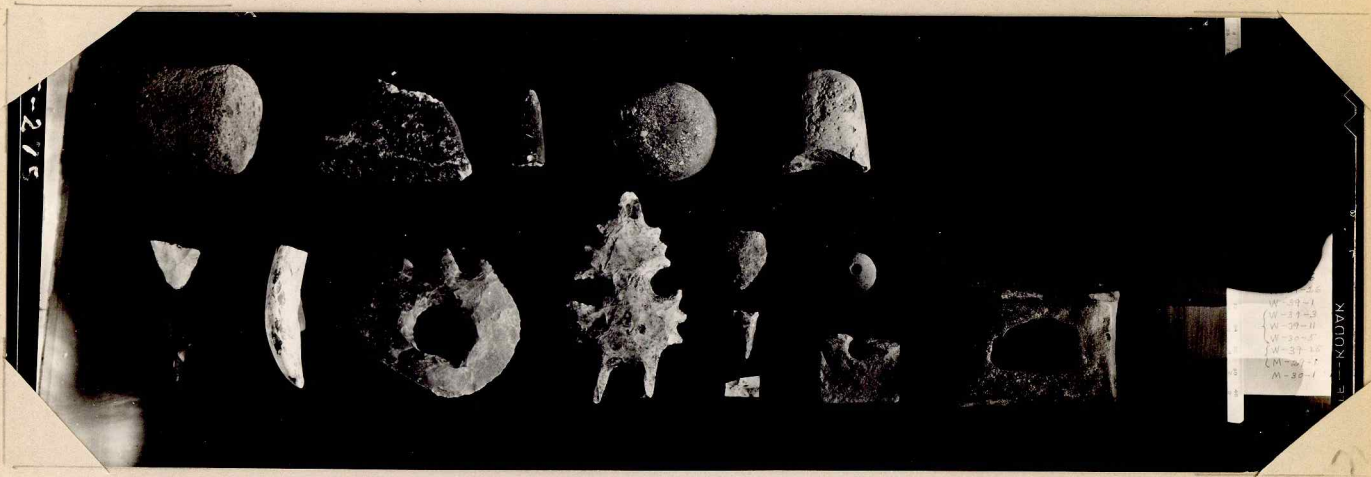
W-39-22



W-35-3

W-39-22

a 35-274 a+b



35-275



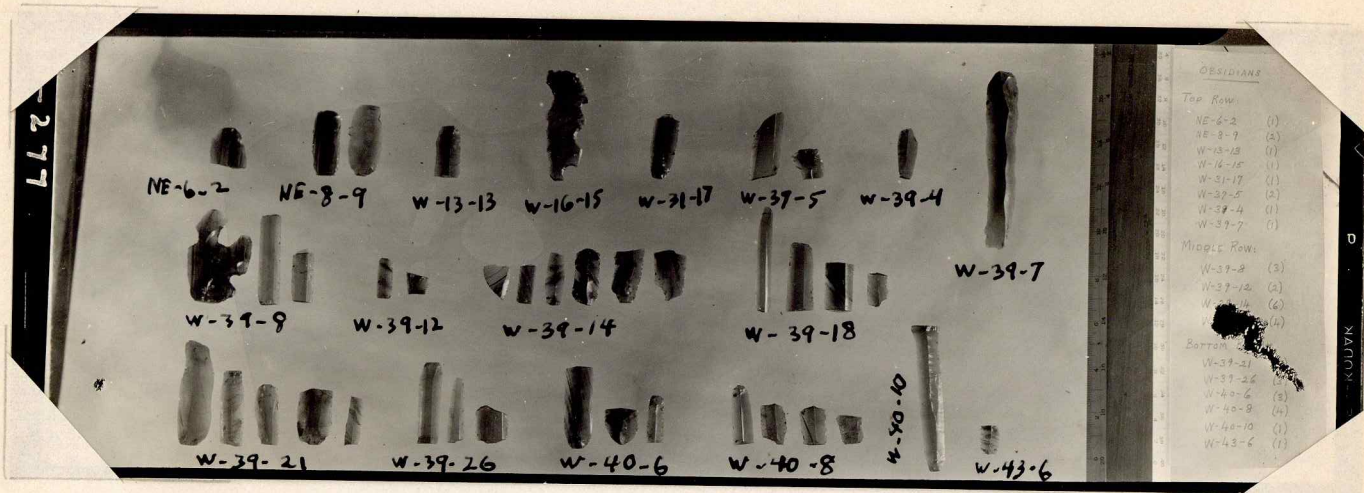
S-276

S-19-9

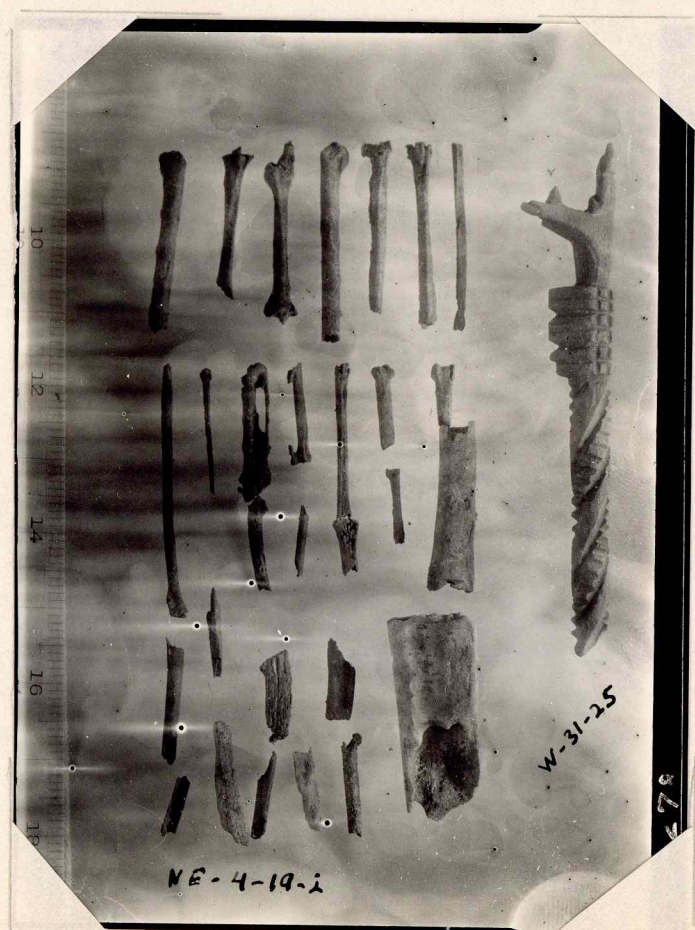
M-281

S-20-5

35-276



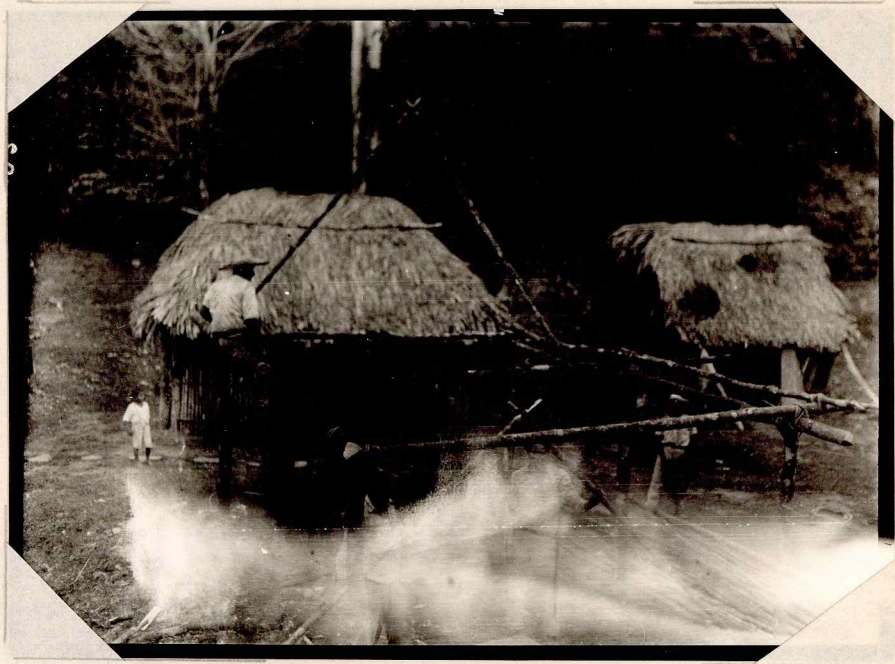
35-277



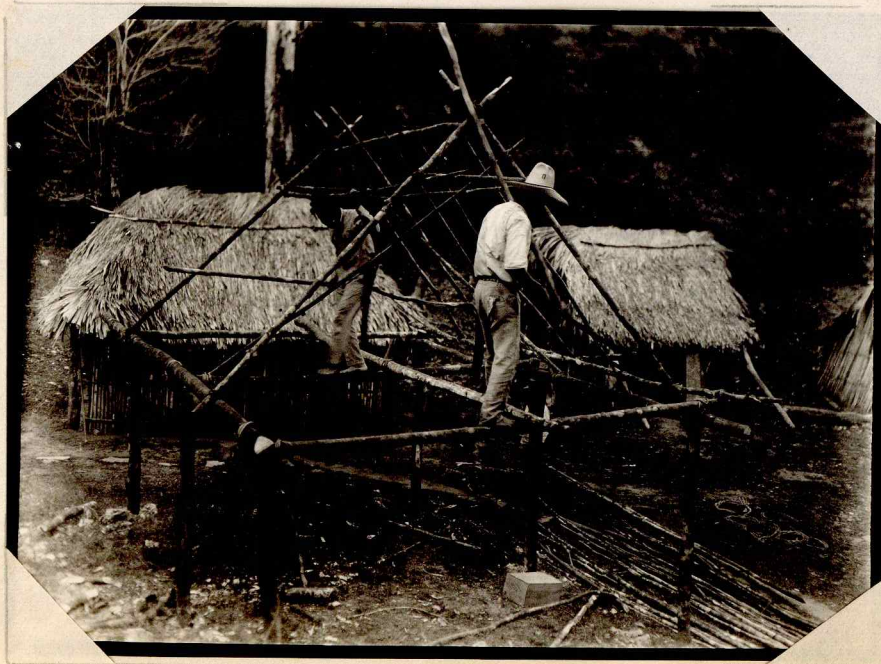
35-278



35-279
17059



35-280
17060



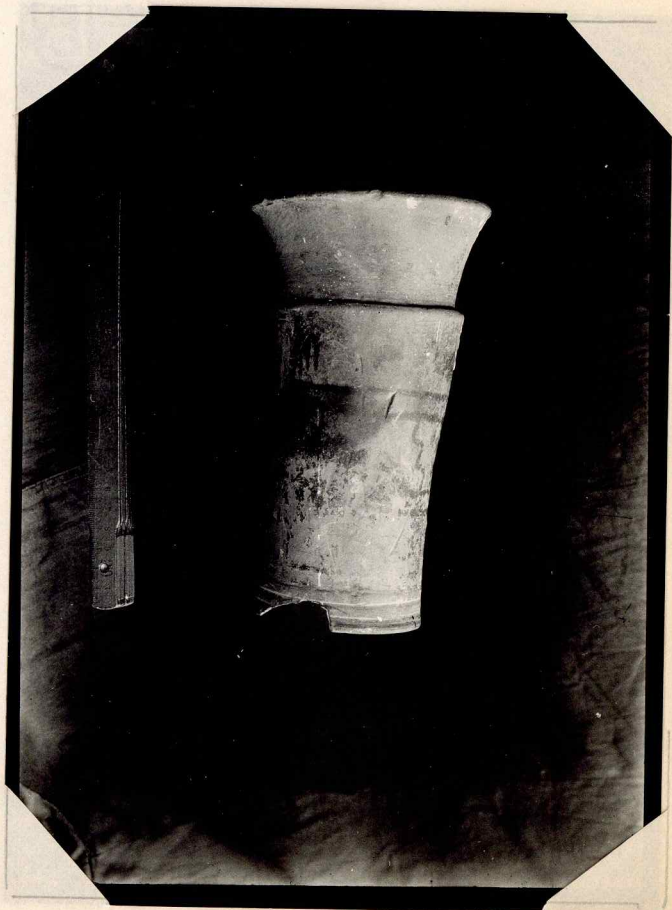
35-281 17061



35-282
17062

= Jomuta

to show collector
~~to~~ Book (Jomuta)



292

293