

183



352



5-3

6

35-3



4

7

35-4



5-5

6

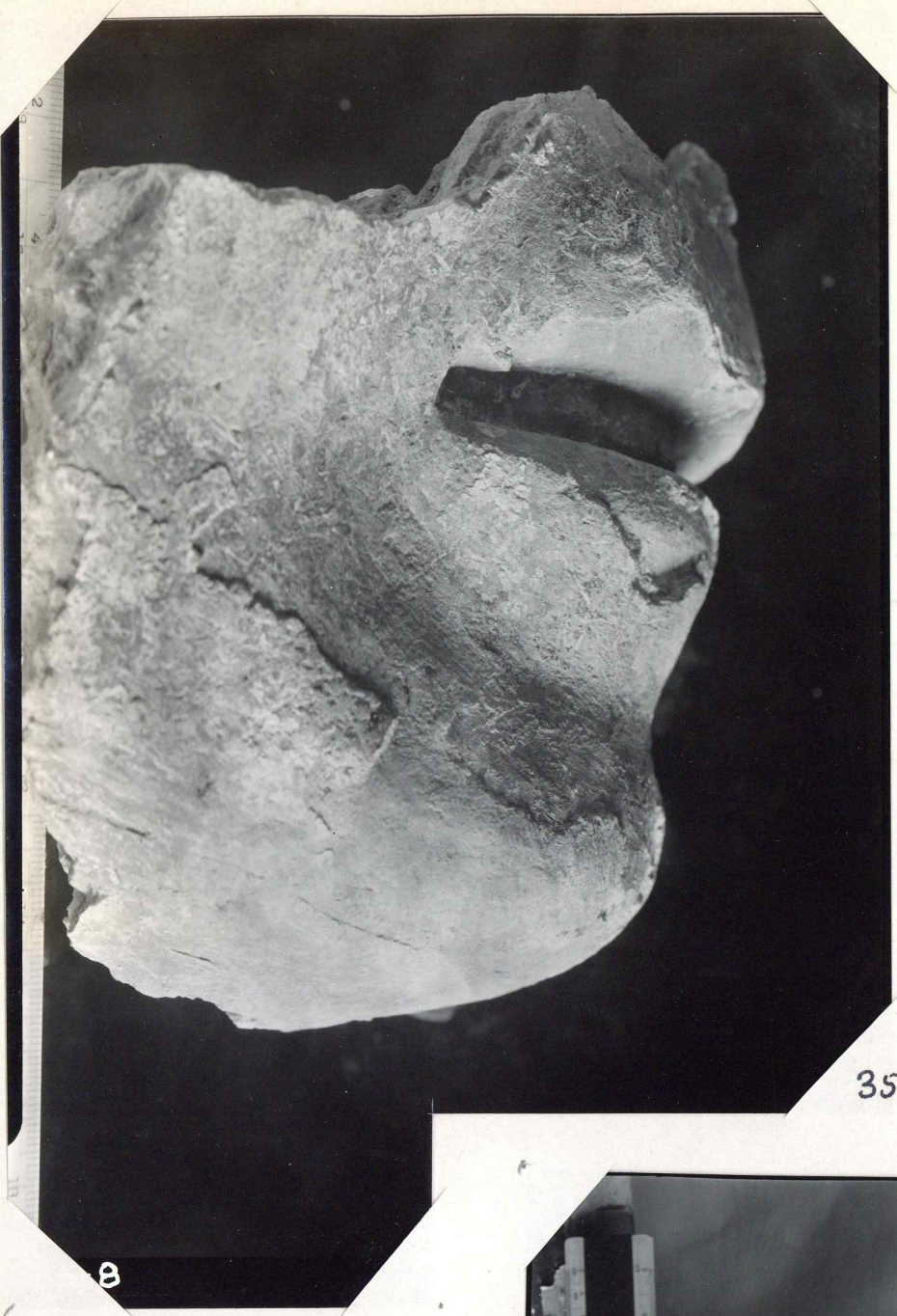
35-5



635-6



35-7



35-8

B



-9

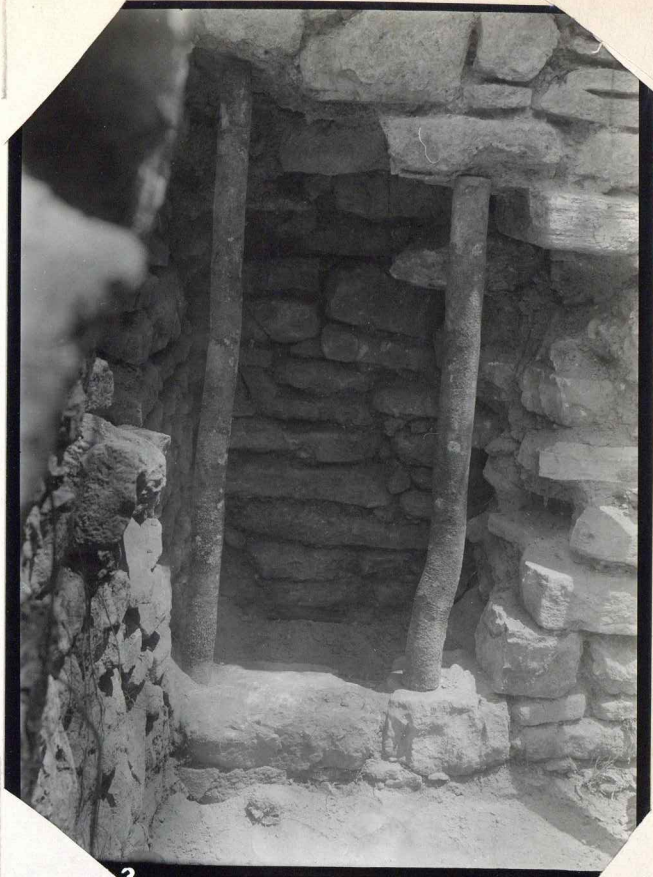
35-9





12

35-12



3

4

35-13

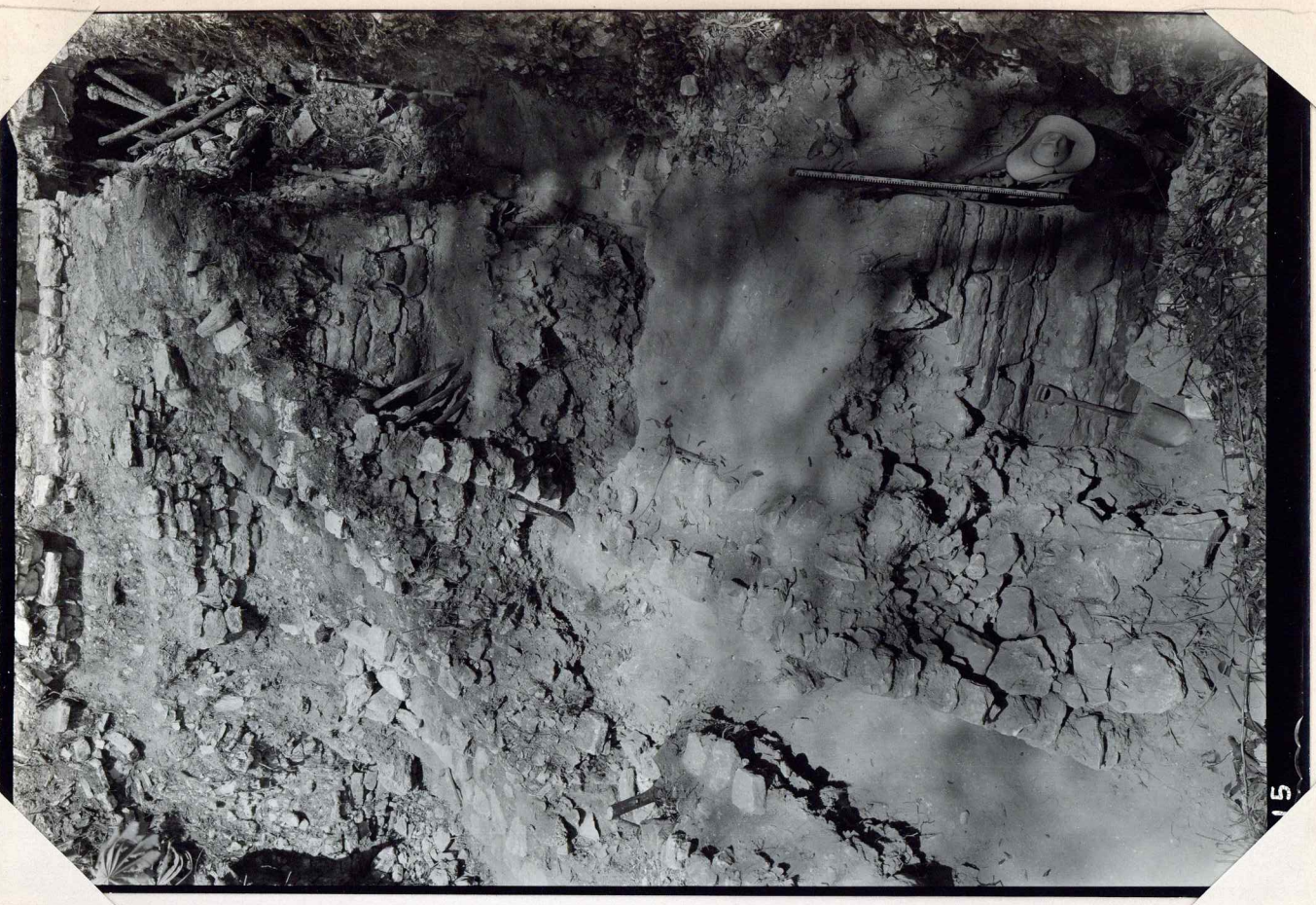


11

35-14

35-15

5



35-16

6

out for use

35-17



18

35-18



19

35-19



35-20

35-20

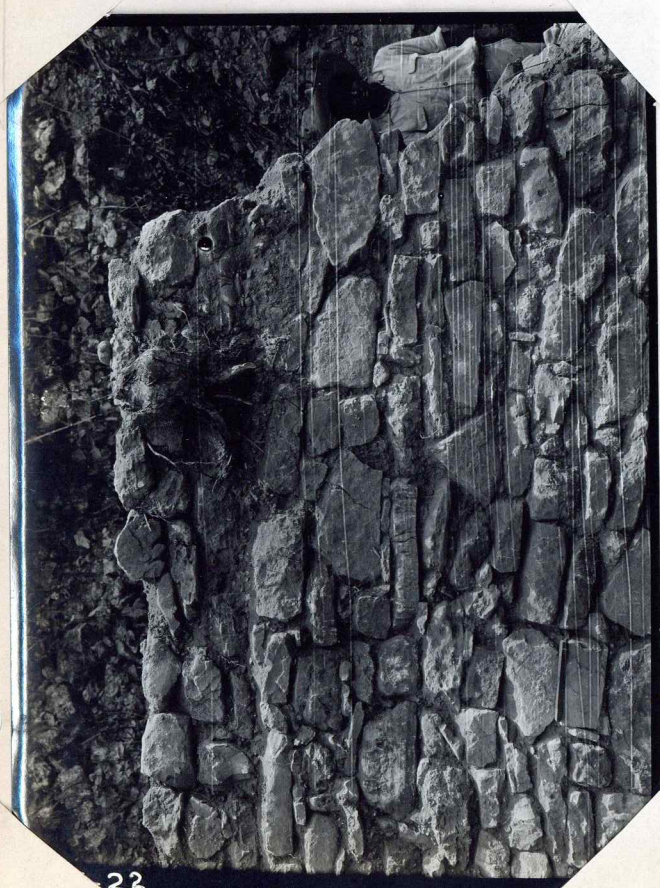
20



35-21

21

5



35-22

22



35-23

35-23

35-23



35-24

35-24



35-25

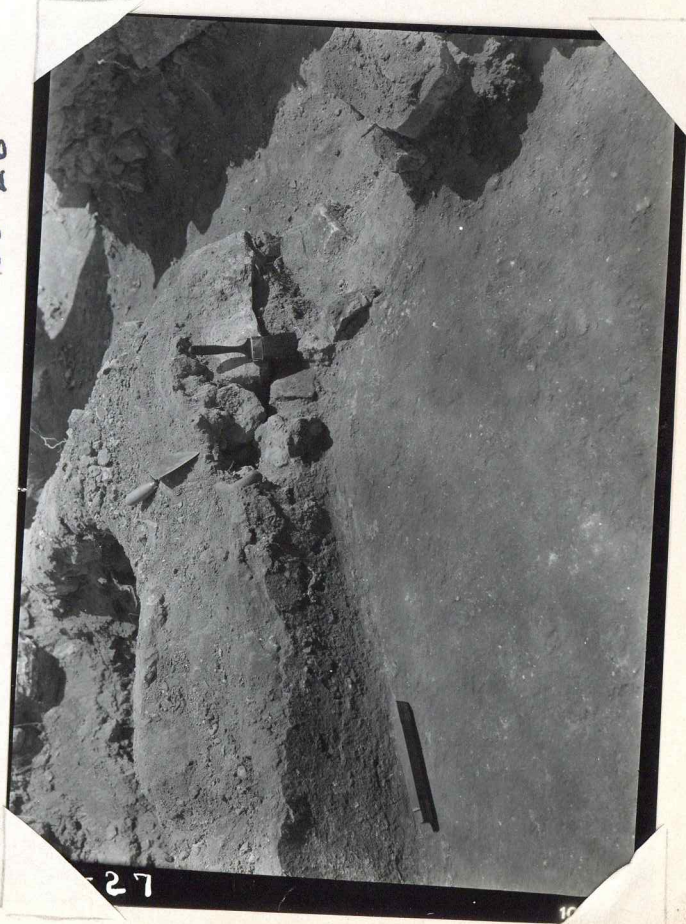
35-25

10



-26

35-26



27

35-27



35-28

-28



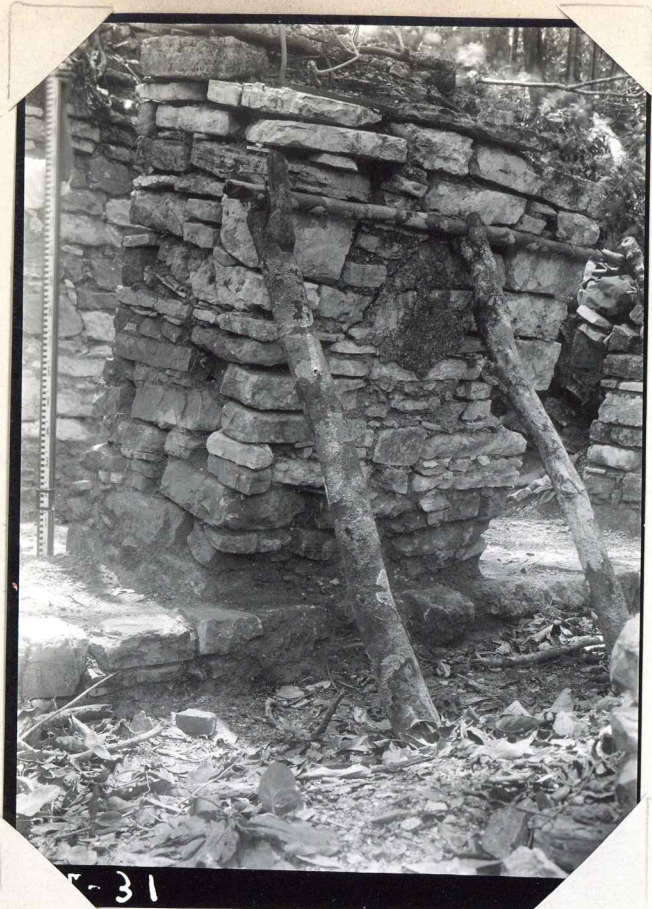
-29

35-29



30

35-30



T-31

35-31



T-32

35-32



33

35-33



T-34

35-34



35

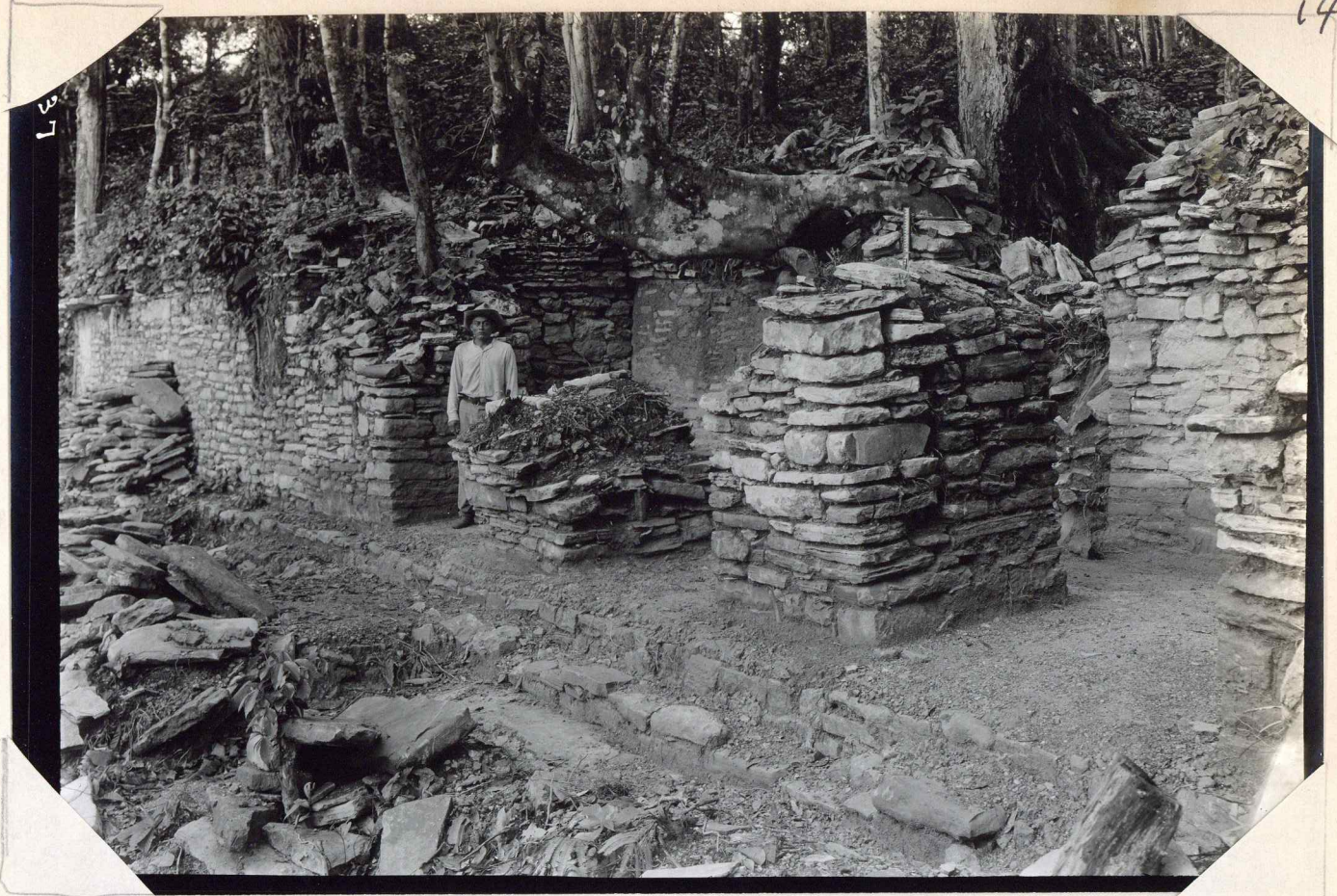
35-35

F. 194



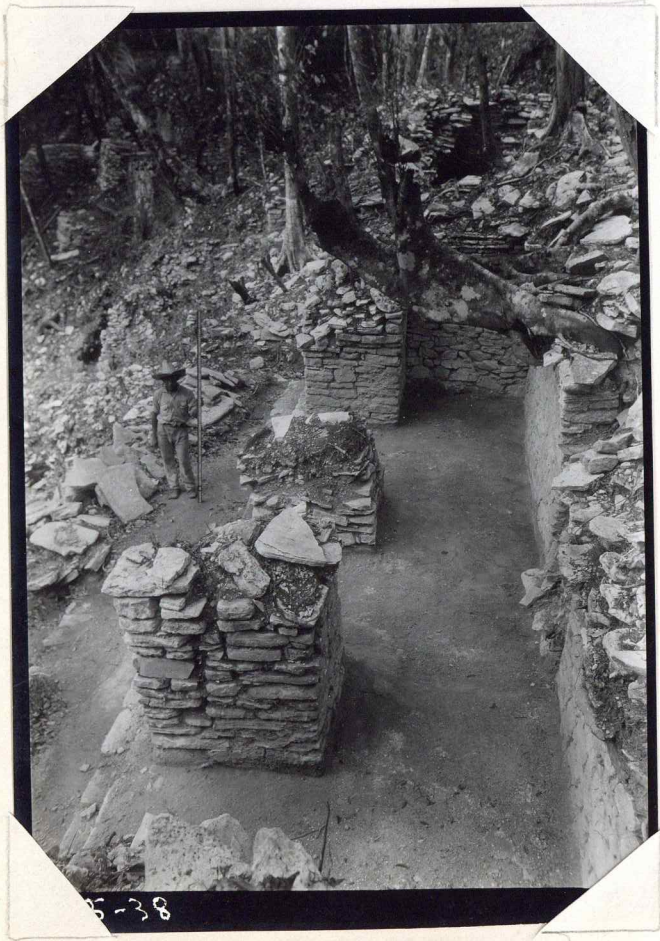
36

35-36



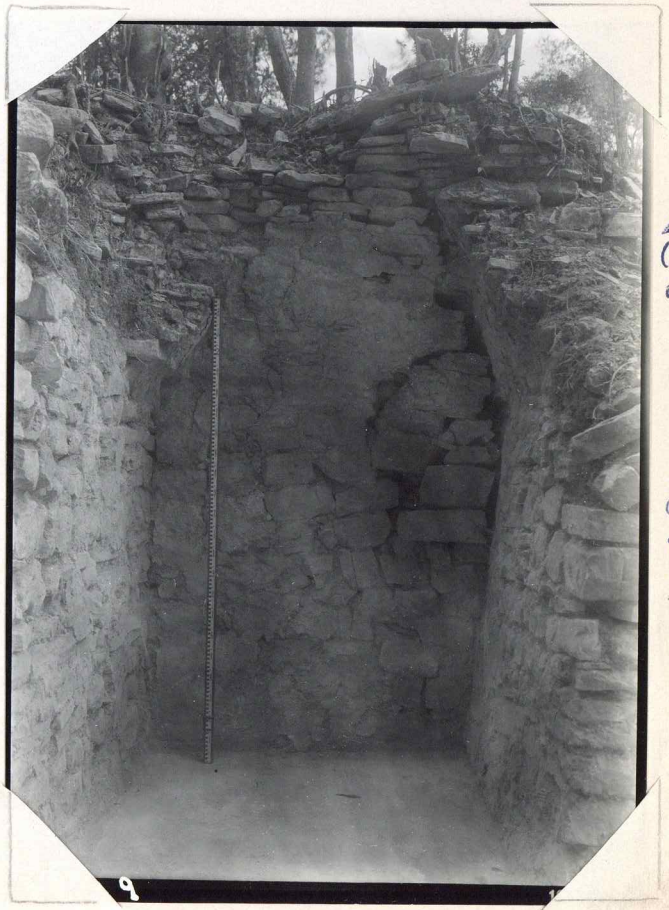
3-29

35-37



35-38

35-38



9

Left
 (NE) end
 of Cent.
 Front
 room.
 (SE side
 of Bldg.
 "End"
 wall
 (Pavilion)
 split on
 right;
 side
 walls
 run
 behind.

Field 213

35-39

PP (13) 14 out
1264
back

15

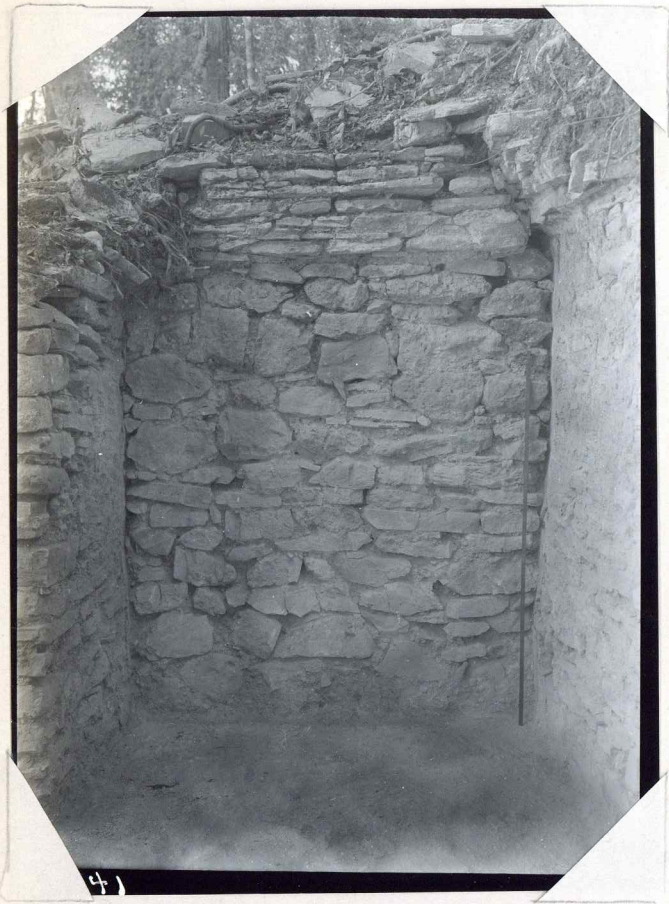


-40

F. 302

35-40
"Left" (NE) "end" (Part. of) wall
same as 213 F.

area 4/10/35



-41

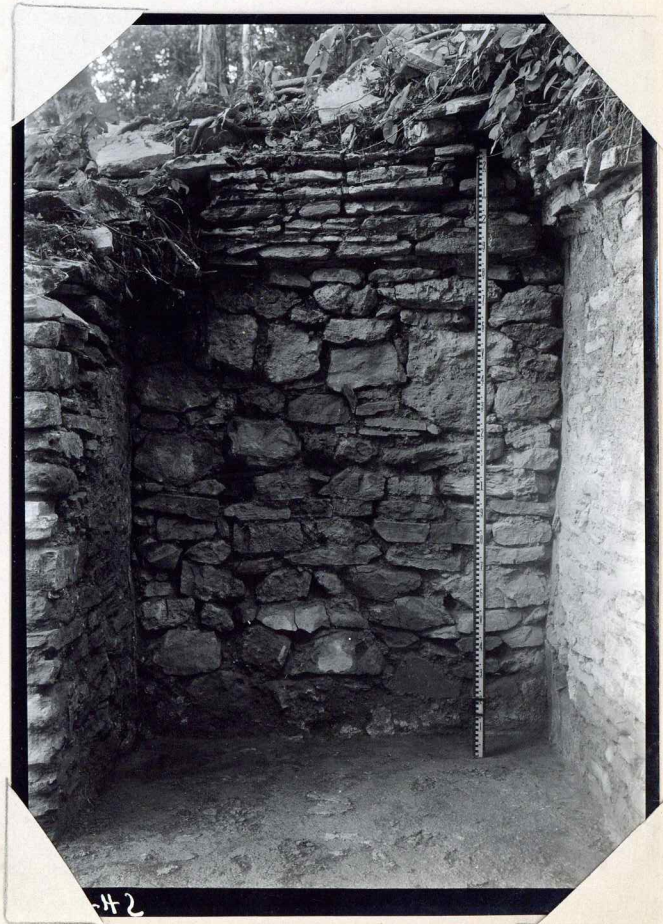
35-41

Field 221

Genr:

4/16 " Right (SW) end wall (part. in)
of central front room:
Mod. front walls less beyond
"end" (part. in) wall

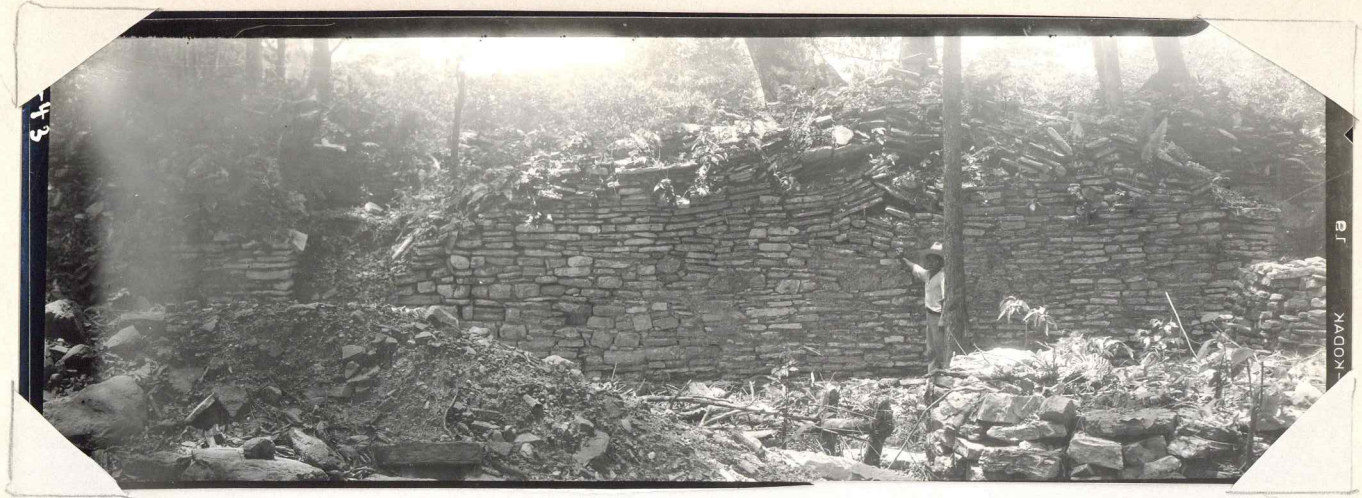
area
6/10/35



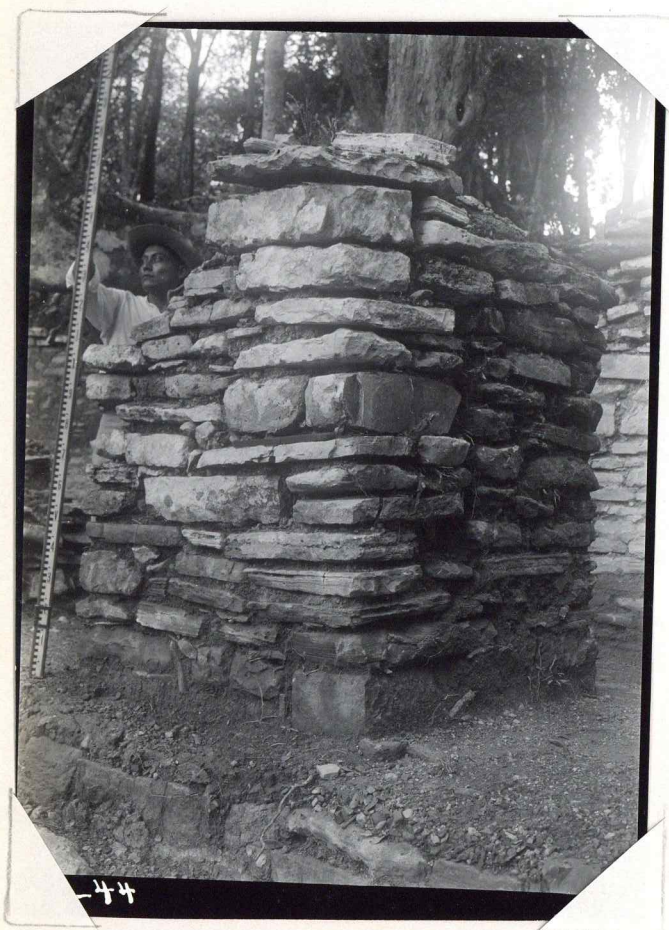
-42

F. 301

35-42



35-43



35-44



35-45



96

35-46



97

35-47



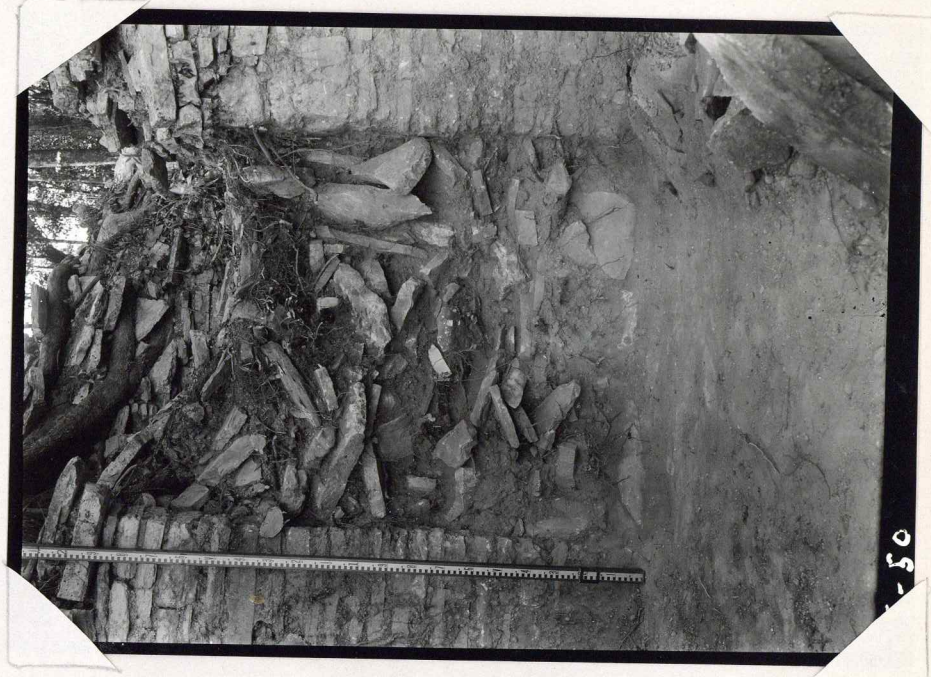
87

35-48



6 ft.

35-49



50

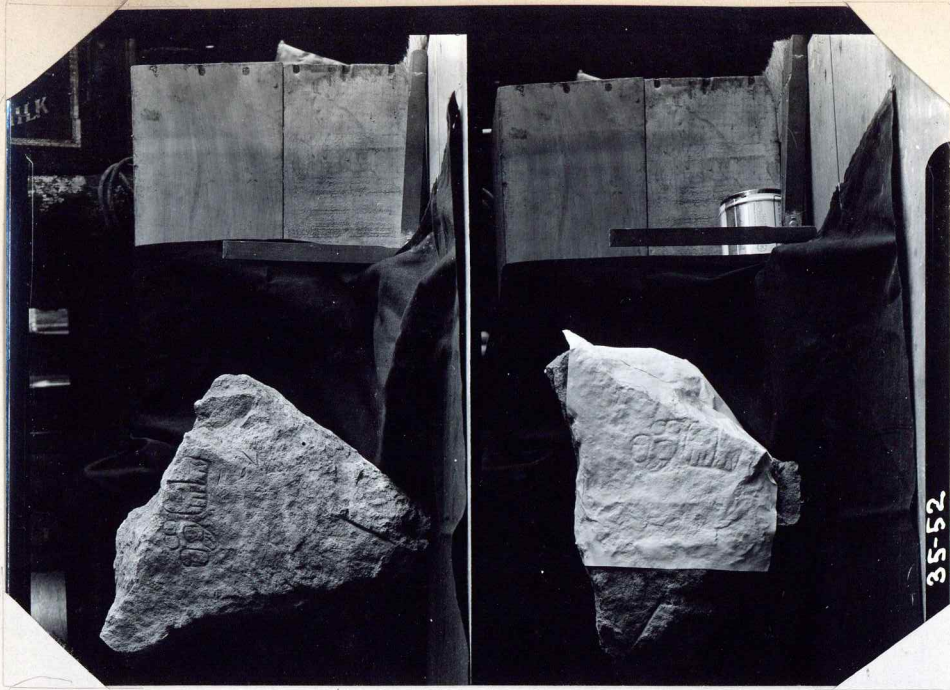
35-50



19

35-51

35



35-52

35-52

M.S.S #14

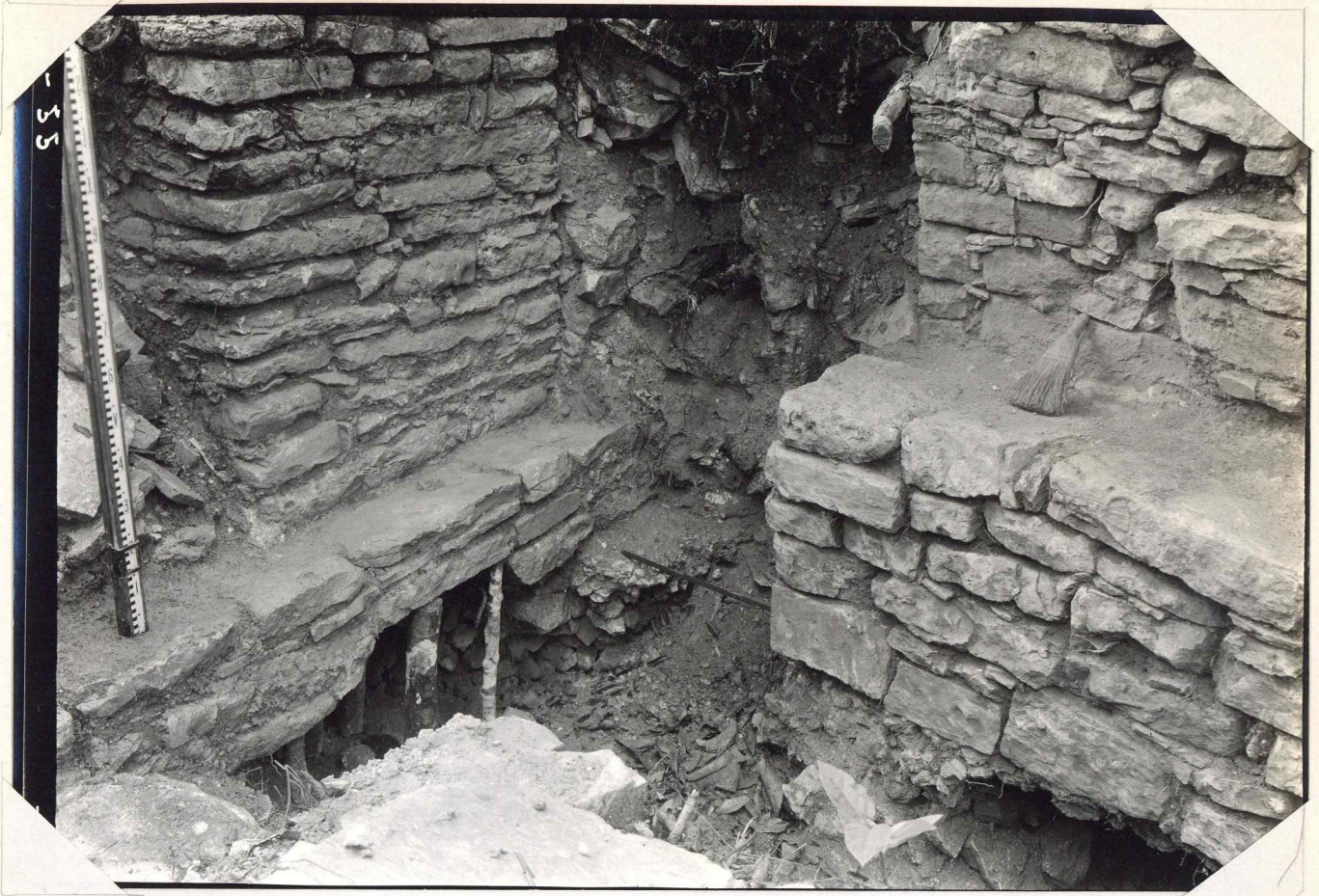


35-53

35-53



35-54



35-55



35-56



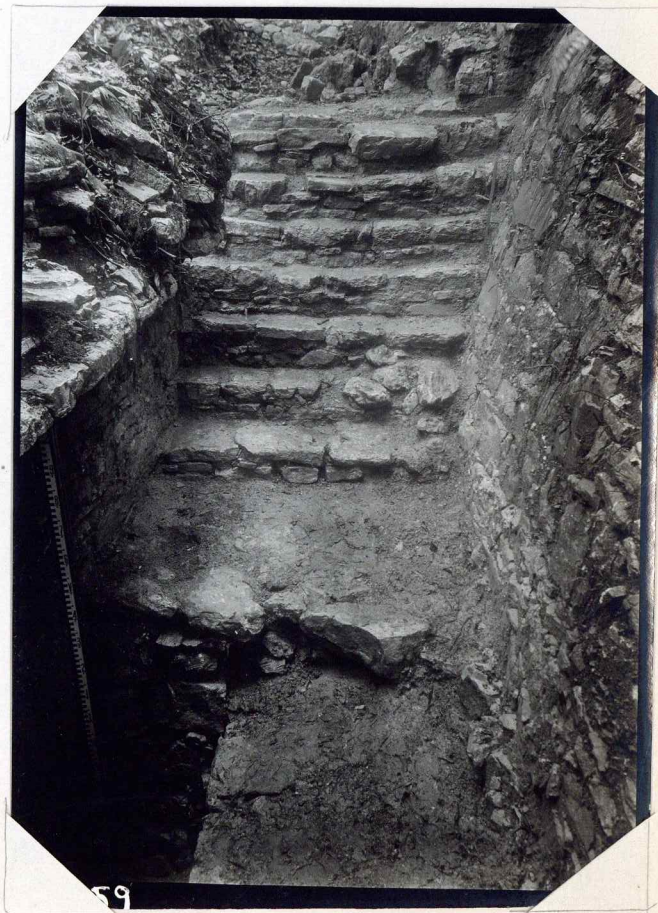
57

35-57



58

35-58



59

35-59



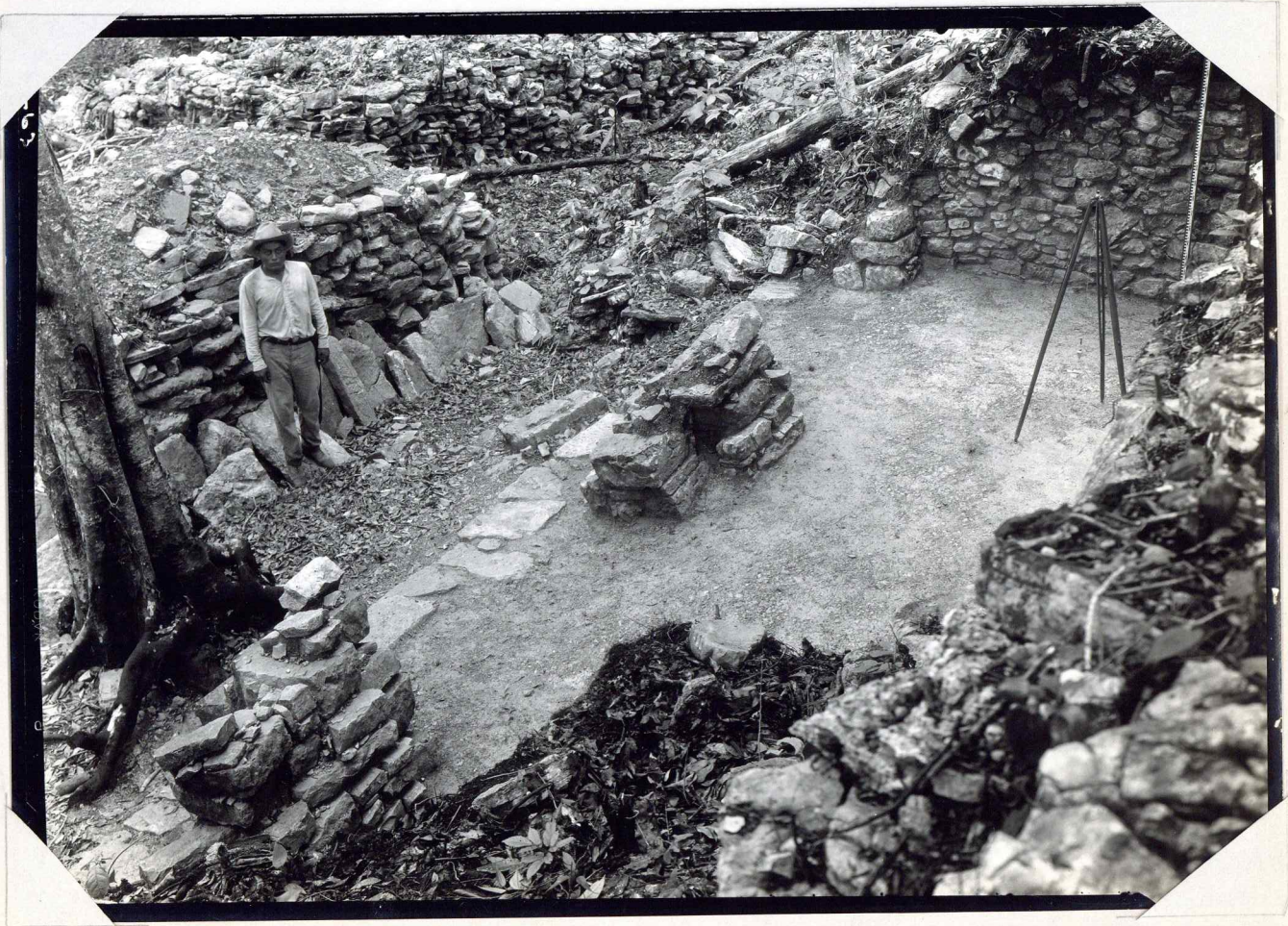
35-60



35-61



35-62

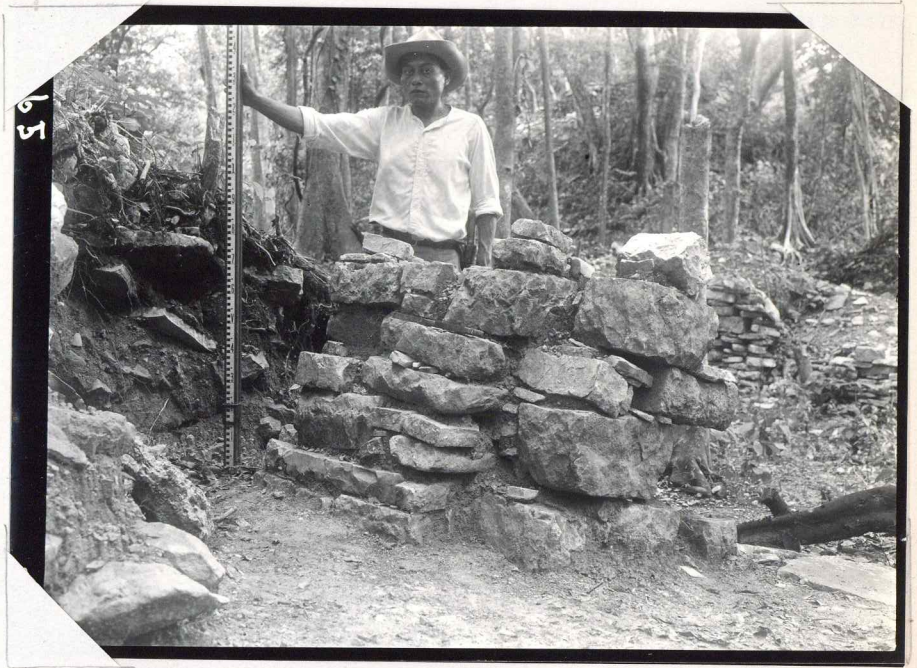


35-63



14

35-64



15

35-65



16

35-66



35-67



35-68



35-69



35-70



35-71



35-72



35-73



35-74



35-75



5-76

35-76



5-77

35-77



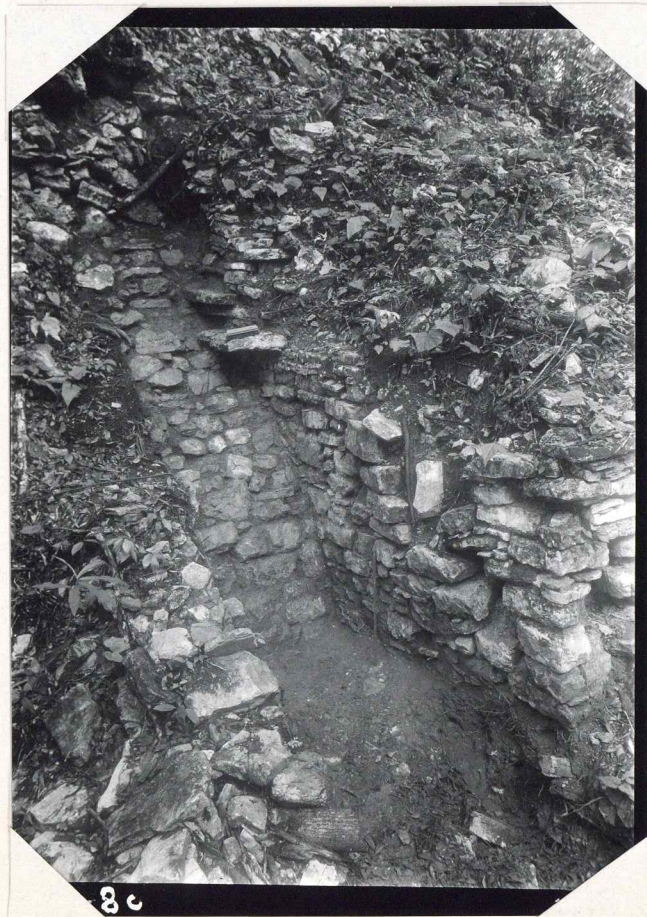
5-78

35-78



35-79

35-79

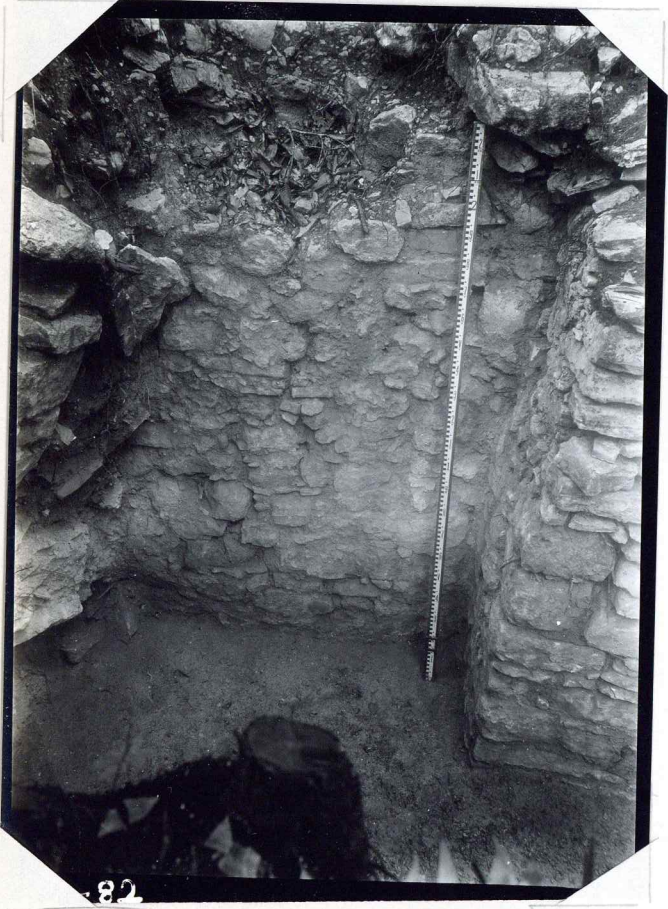


8c

35-80



35-81



35-82



35-83



5-84

35-84

SH 5-13

SH 5-10



KODAK SAFETY FILM

5-84

35-85



35-86



35-87



35-88

35-88



35-89

35-89



35-90

35-90

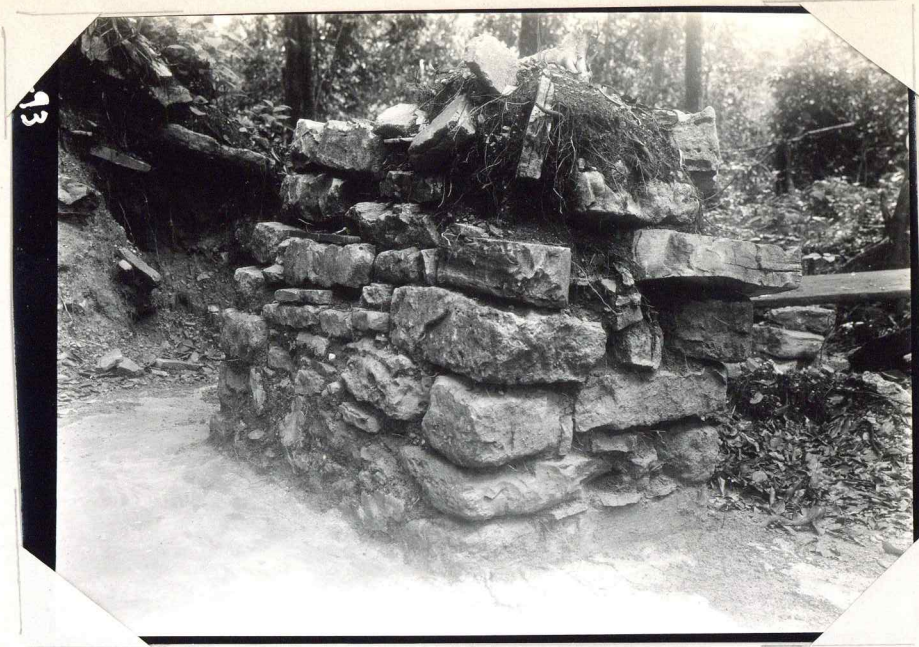


35-91
 = Fl. 216 (here)
 Trawl at top of
 mus screen.



F. No. 260 (here)
 top log stump under
 debris

35-92



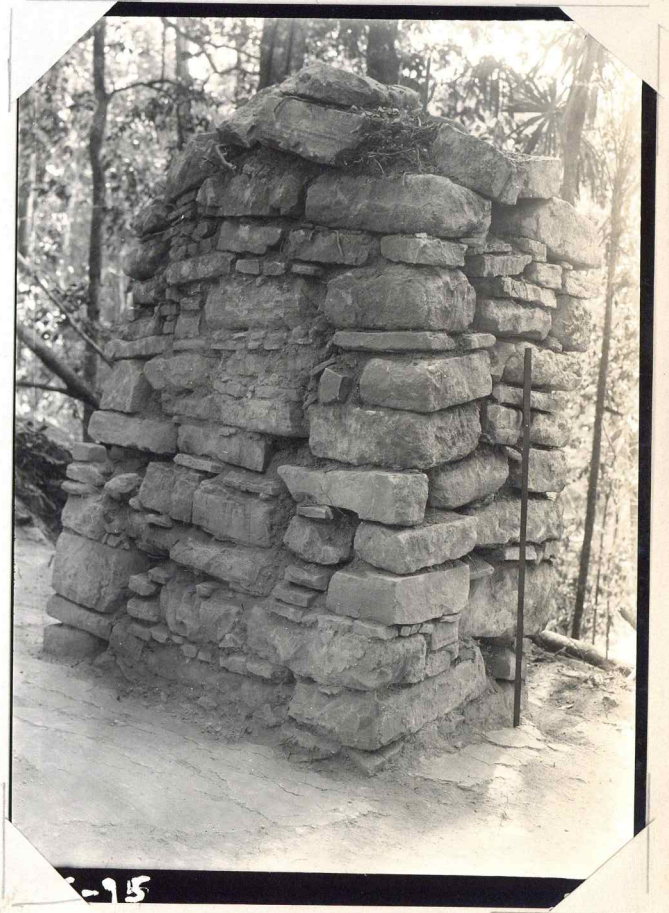
93

35-93



-94

35-94



-95

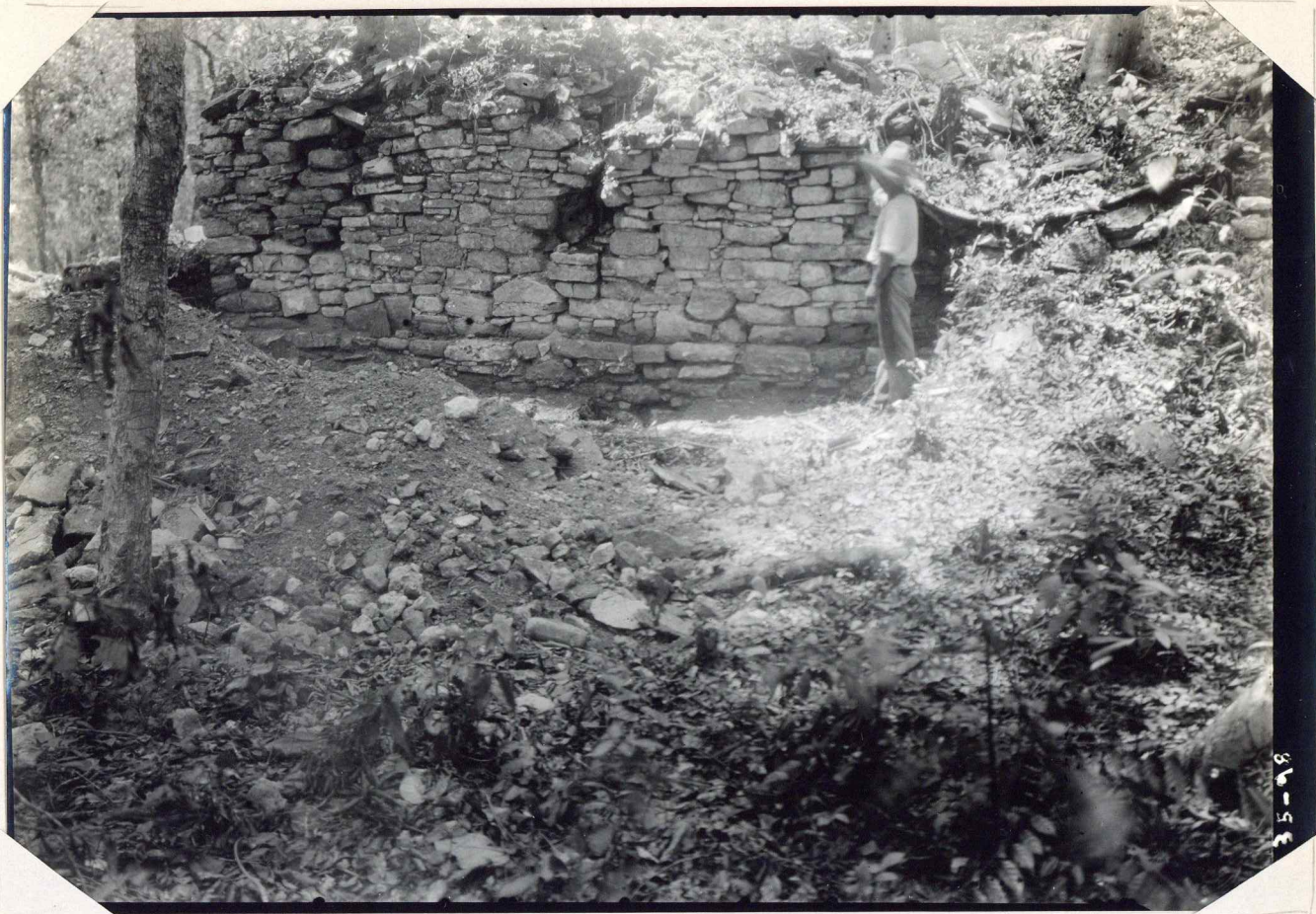
35-95



35-96



35-97



35-98



35-99



35-100



35-101



35-102



35-103

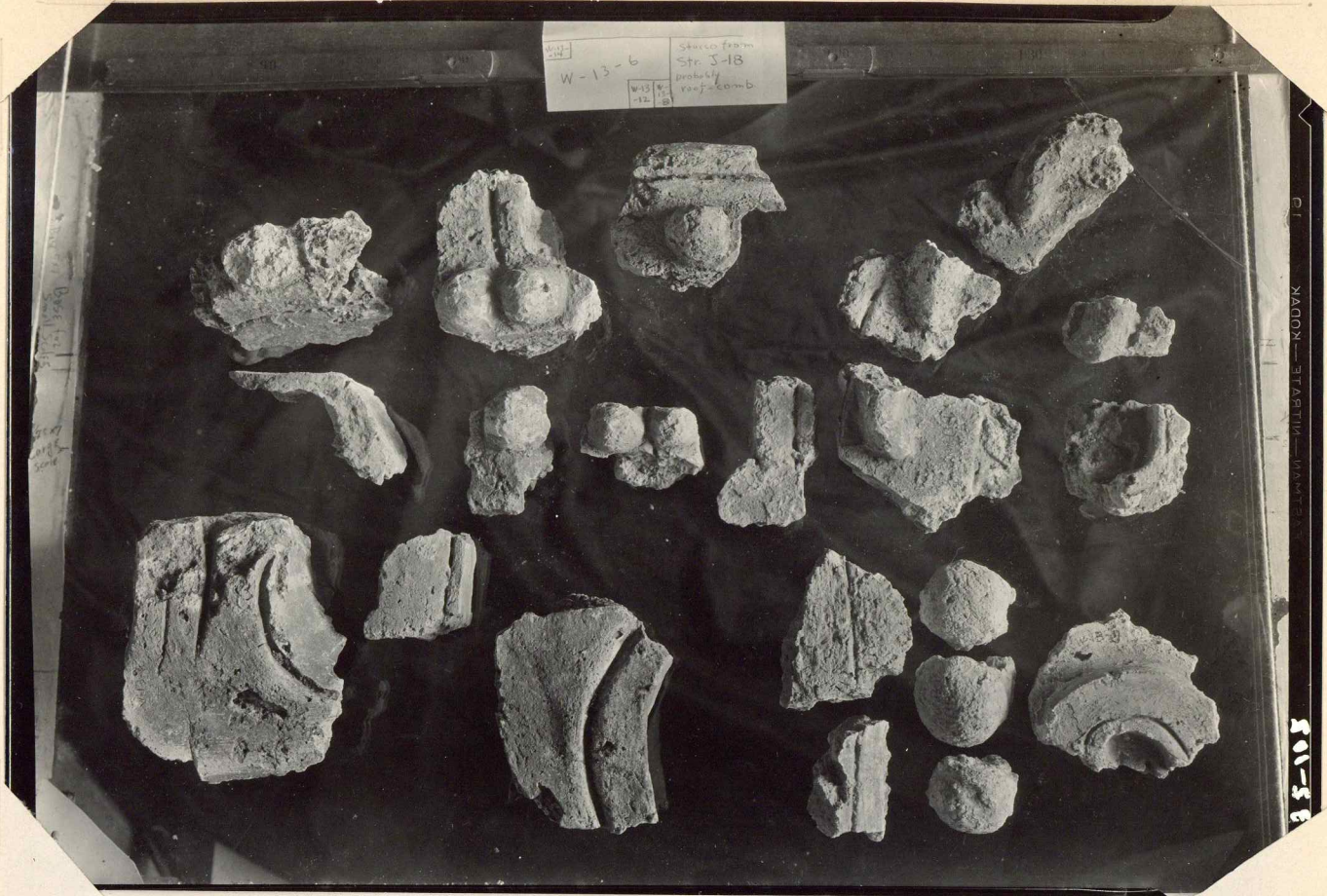
35-103



35-104

Fundt 262 (head)
 m.s.
 stura ~~steps~~
 mod. wall

35-104



W-13-6
 Shells from
 Str 3-18
 probably
 roof-comb

35-105

35-105

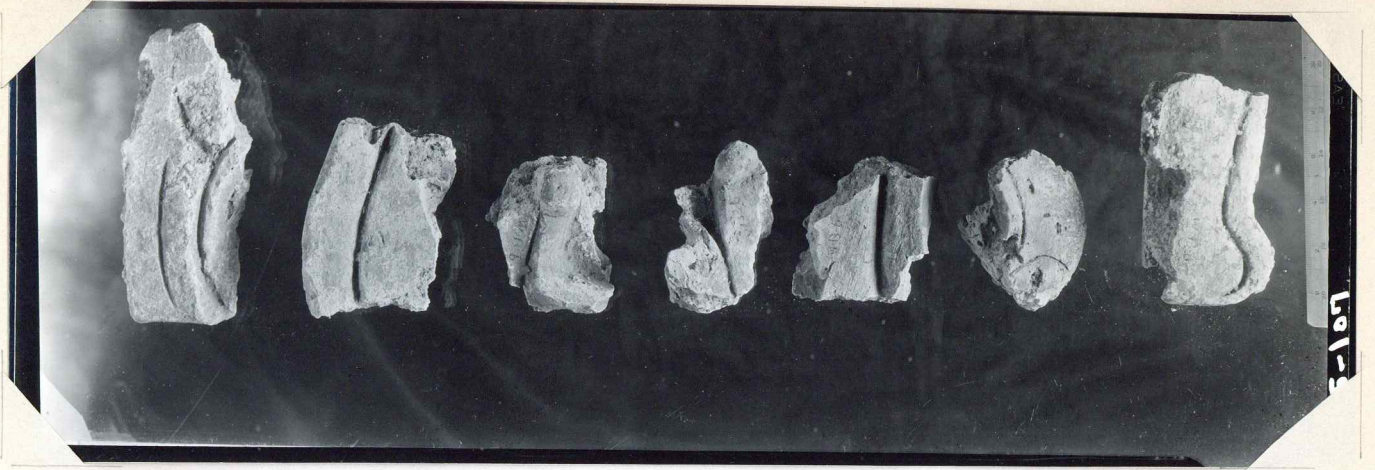
Str 3-18



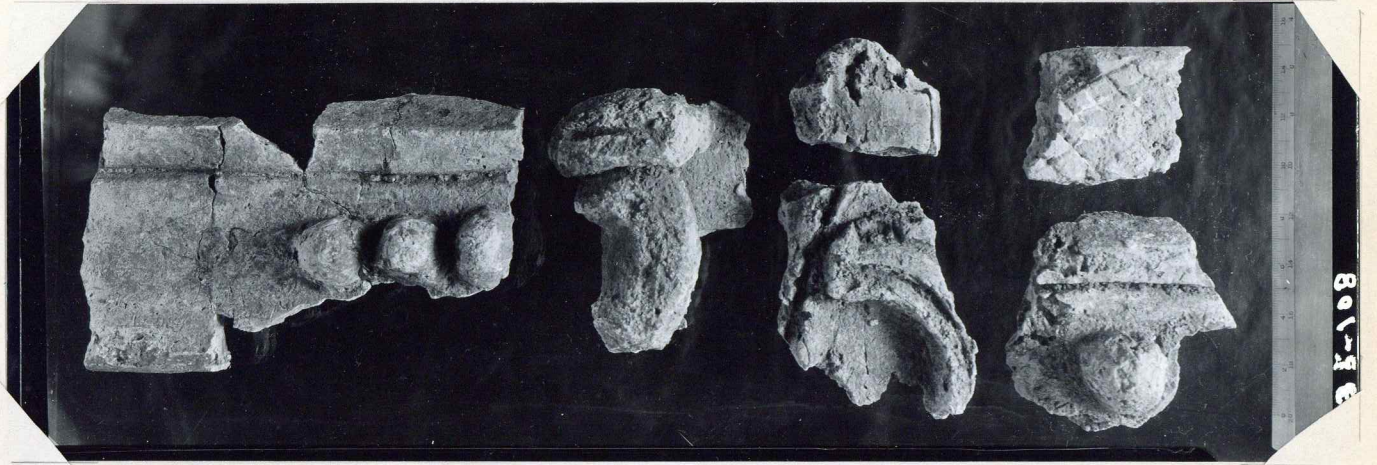
W-13-14

35-106

35-106



35-107



35-108
(546 5-18)



f 406
2.3

35-109



110

500 S-21

v to S-21

f 405 LS

35-110



111

35-111 x 404 LS

7" wall. etc. S-21



112

f "h"

35-112

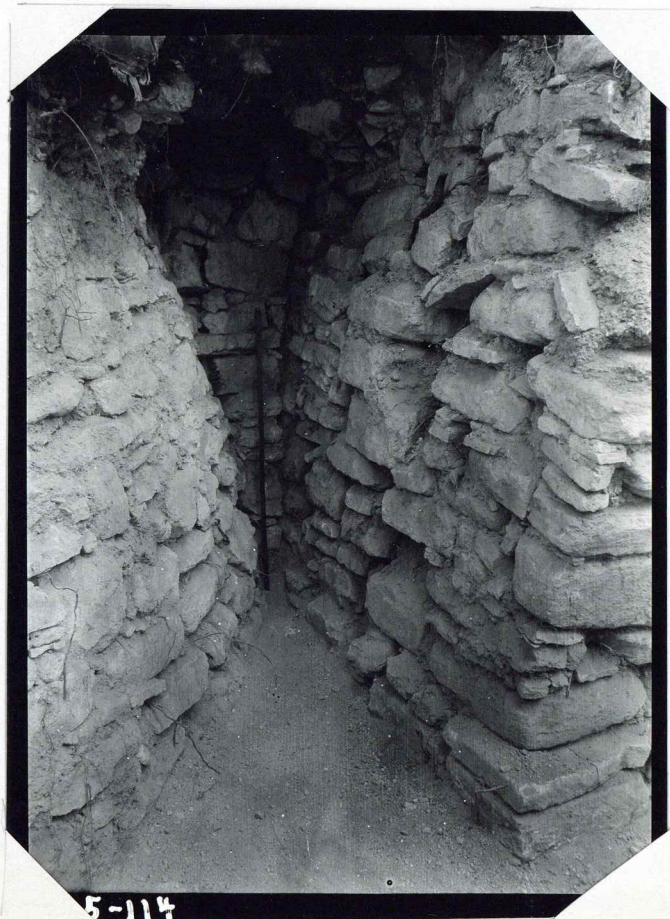


5-113

5-21

f. 258

35-113



5-114

f. 261

35-114



35-115

35-115



35-116

35-116



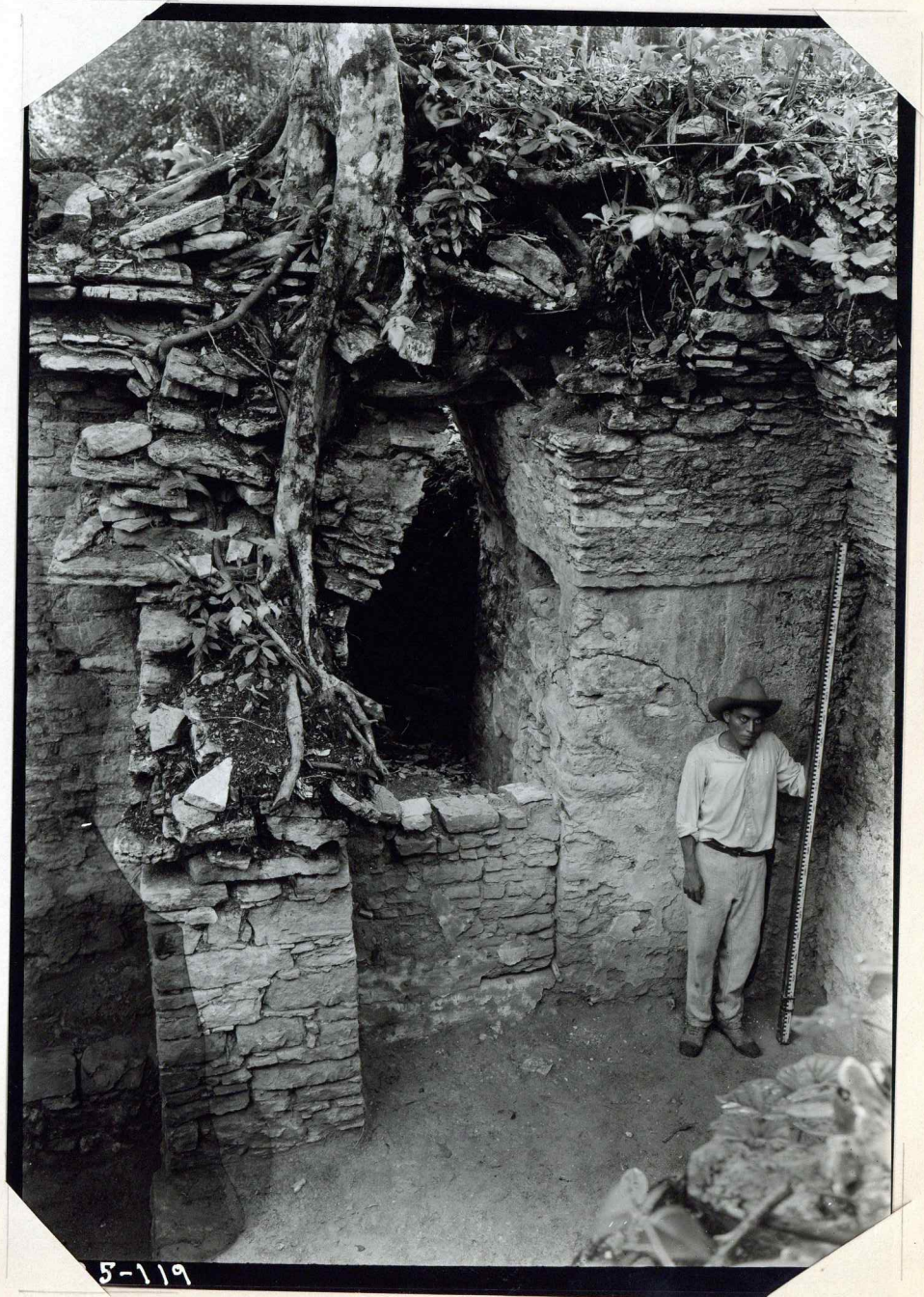
35-117

35-117



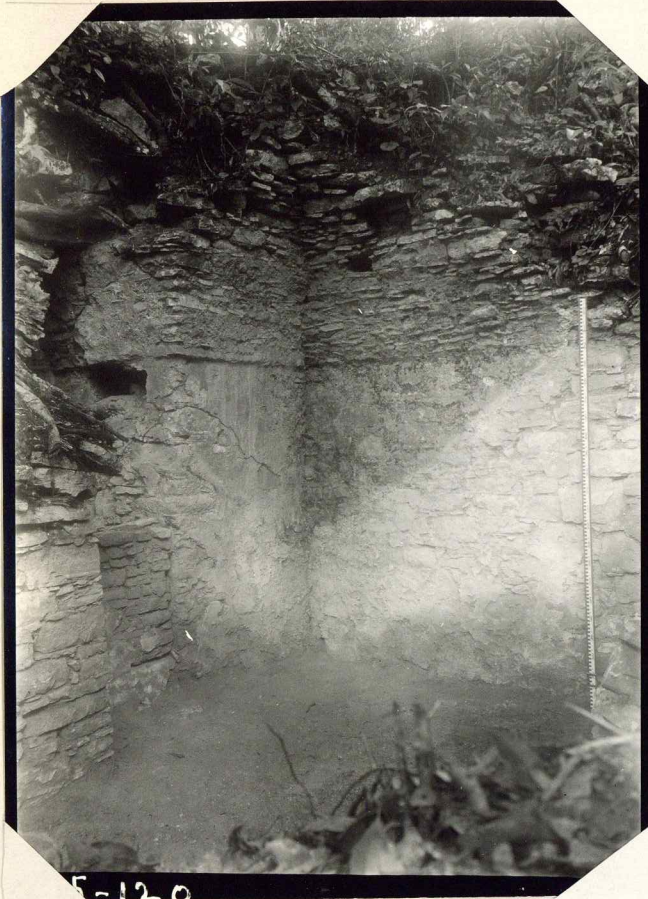
35-118

35-118



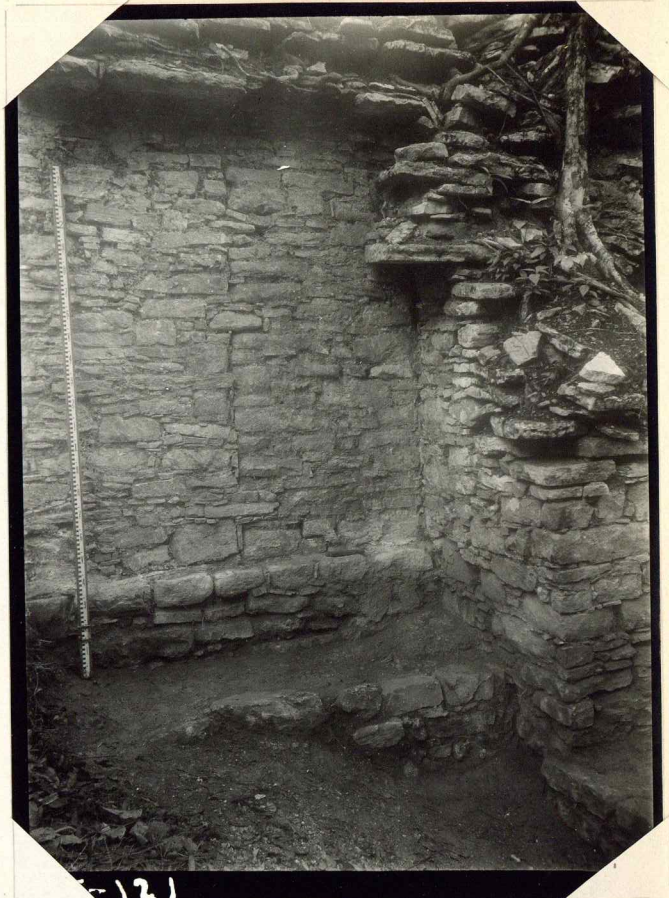
5-119

35-119



35-120

35-120



35-121

35-121

3-27/3-22



35-122

35-122

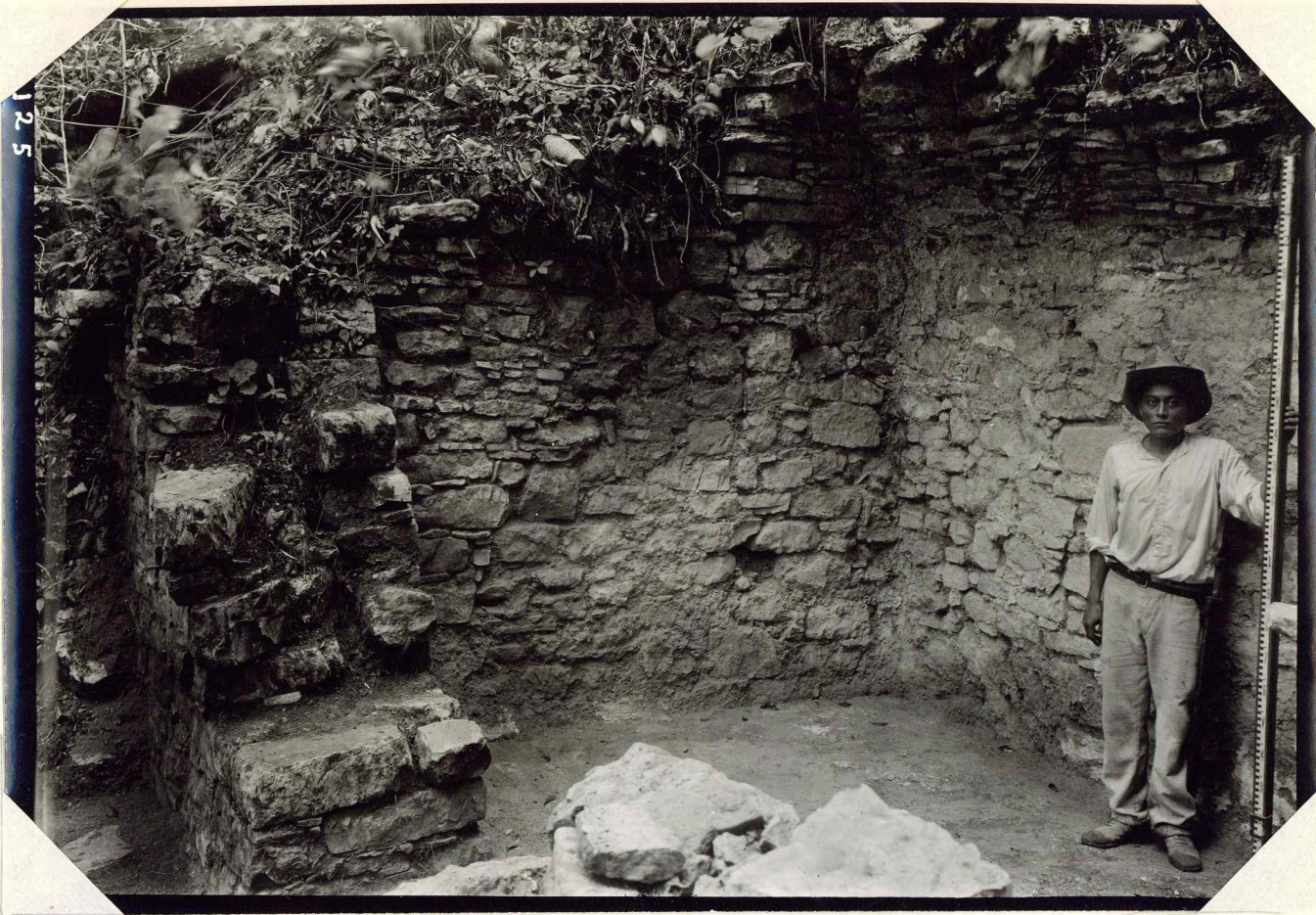


35-123

35-123



35-124



35-125



3-22

35-126



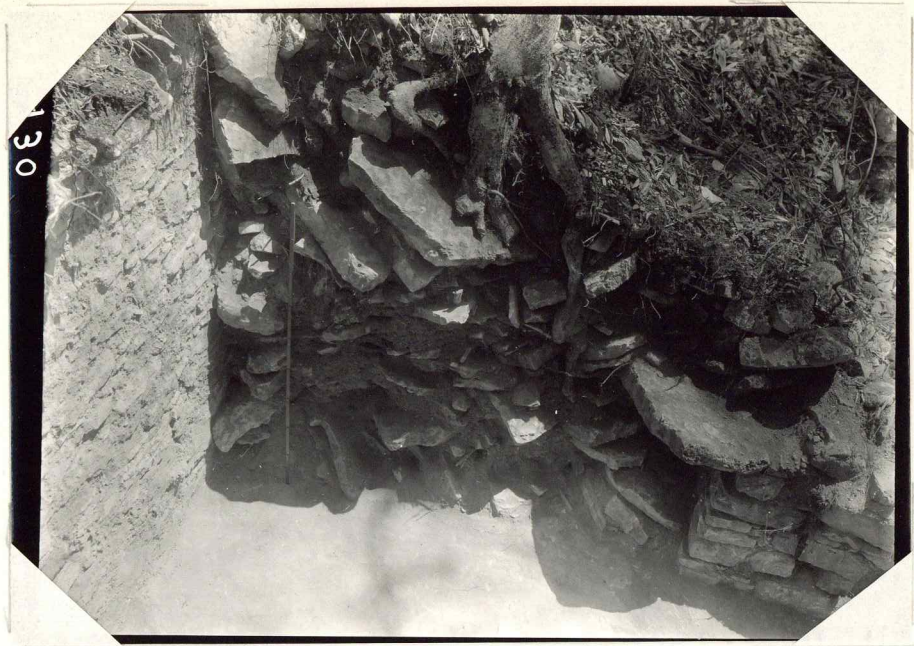
35-127



35-128



35-129



35-130



35-131



132

35-132



133

35-133



134

35-134



35-135



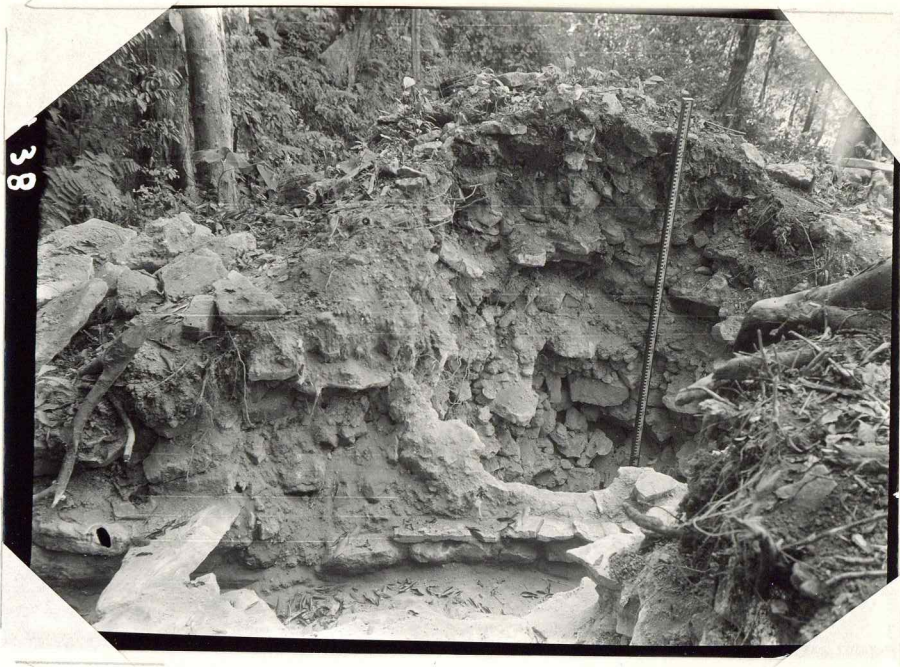
316

35-136

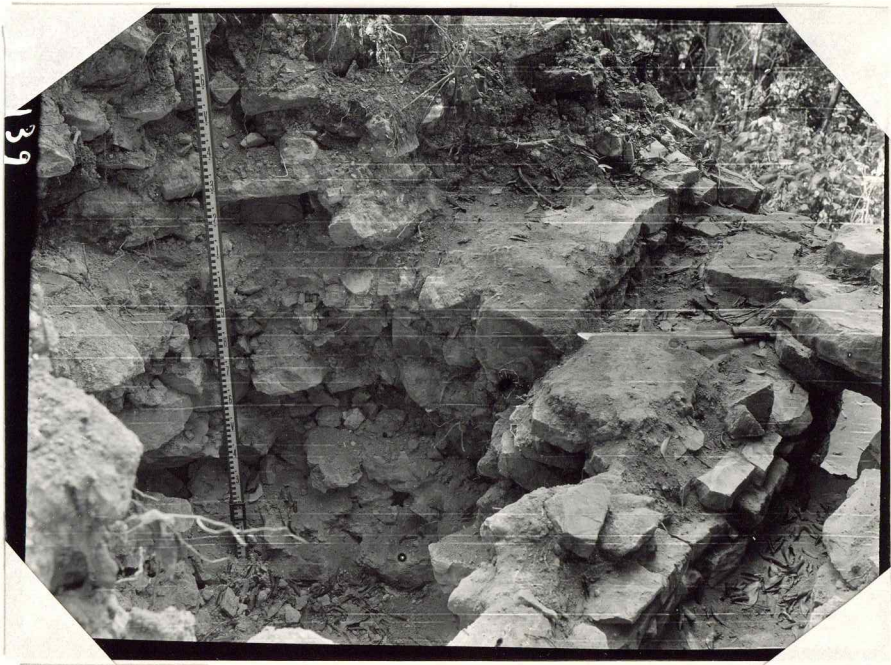


317

35-137



35-138



35-139



140

35-140



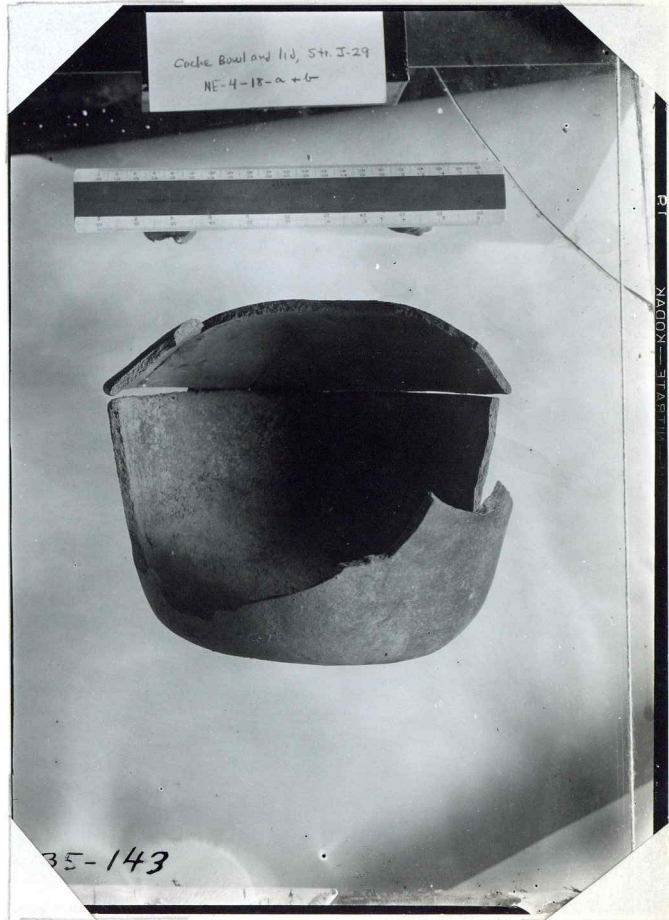
-141

35-141



-142

35-142



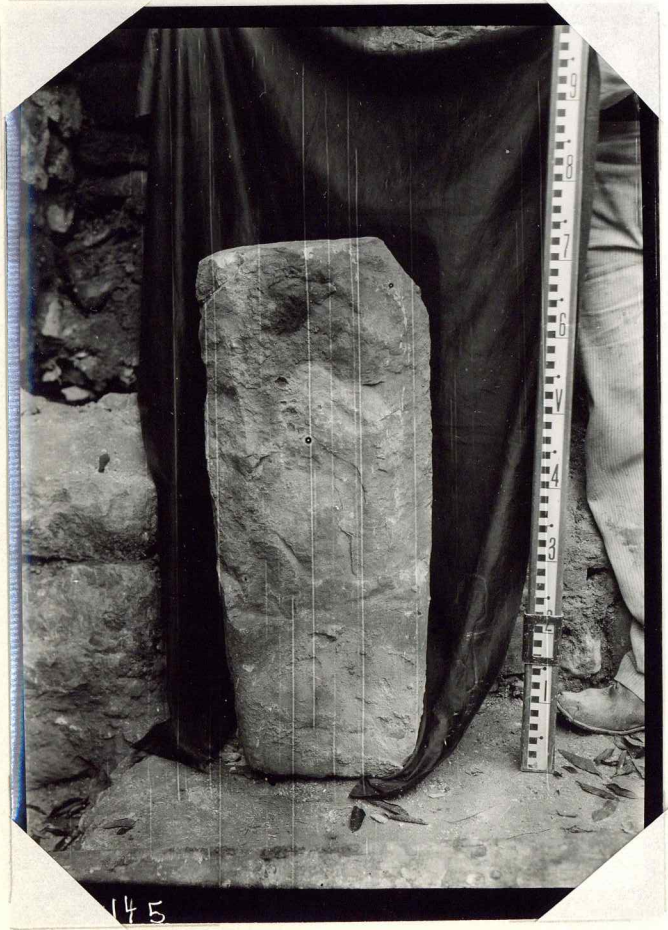
Cache Bouldard 110, Stn J-29
NE-4-18-a-6

35-143

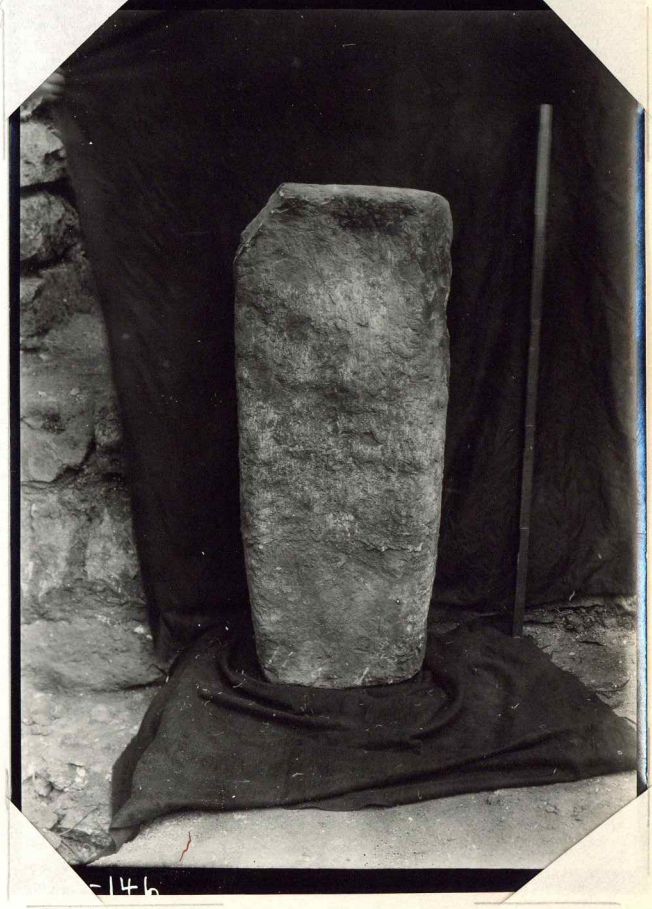
35-143



35-144



35-145



35-146



147

35-147



148

35-148



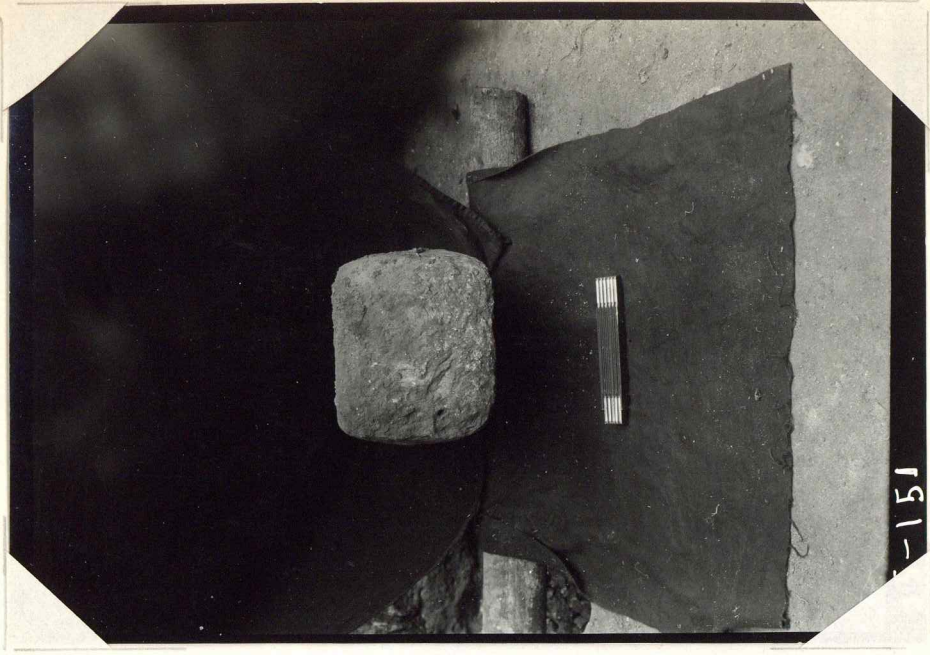
5-149

35-149



5-150

35-150



151

35-151



152

35-152



153

35-153



5-154

35-154



55

35-155

no g.



Fig 16

16937

35-156



Fig 15

16938

35-157



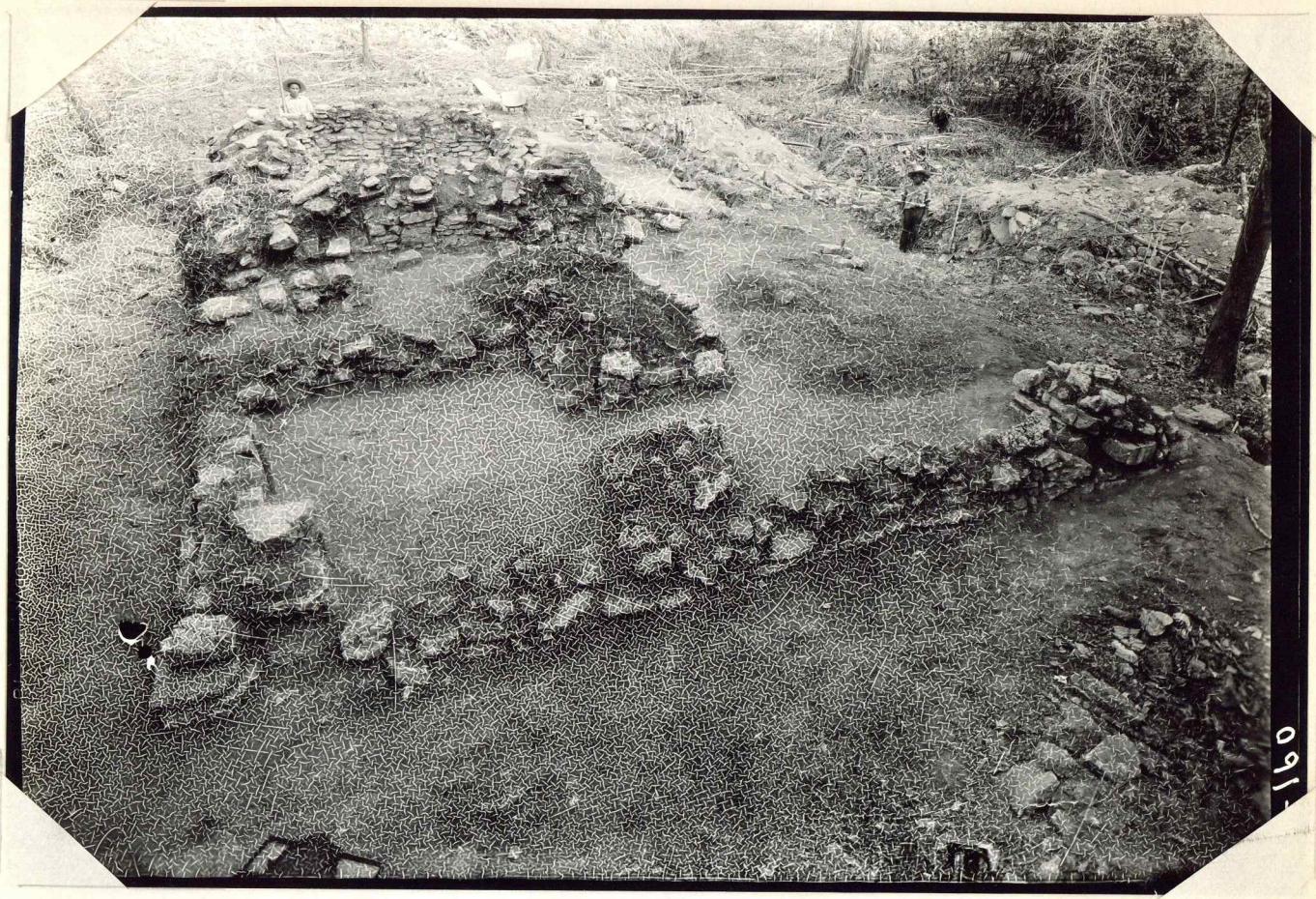
35-158

Fig 14



35-159

159
KODAK SAFETY FILM



160

35-160

F13
13

35-161