

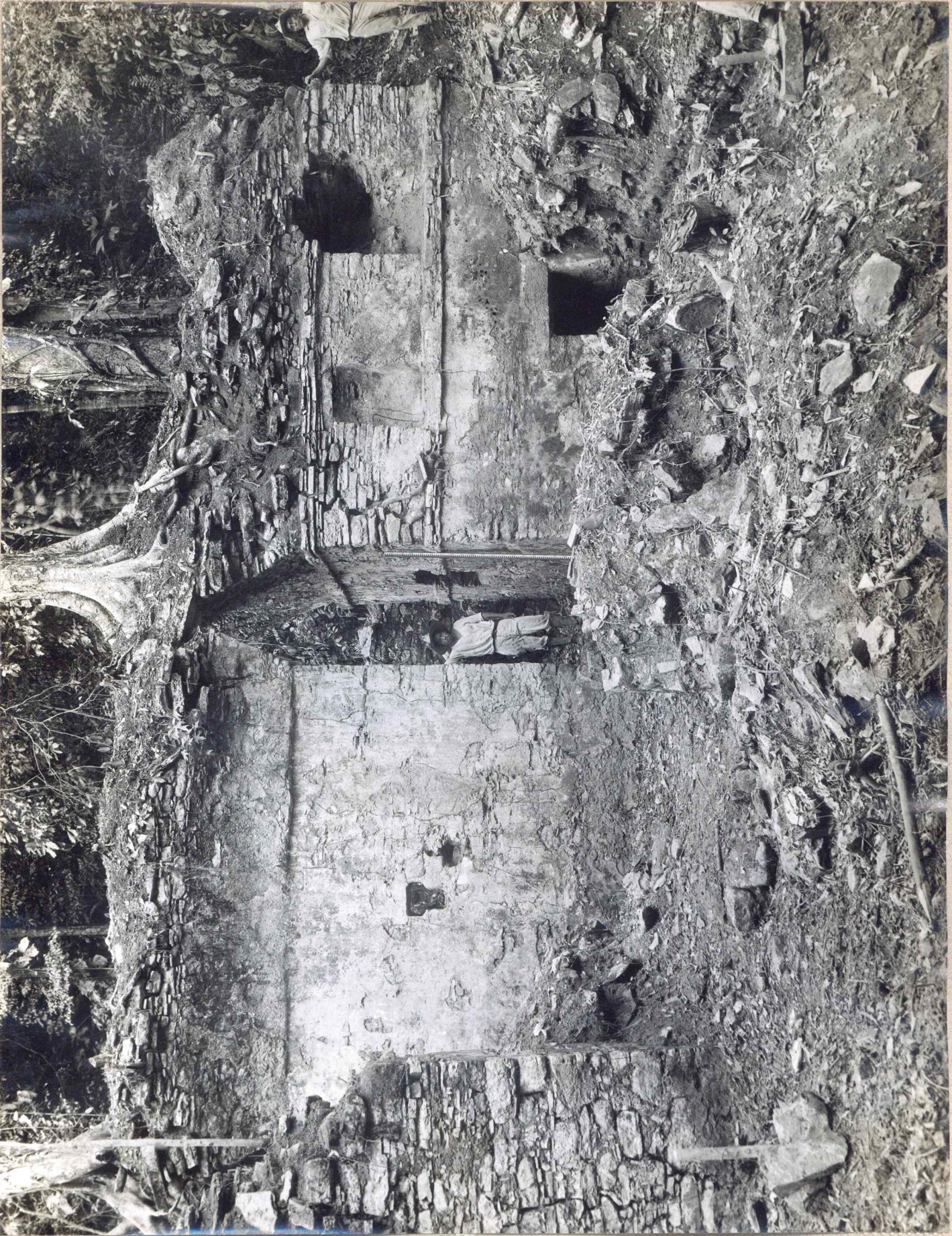
- 91 0-12 E Temple chamber from left front corner. Back wall and sill at right - the leveling rod rests on the sill; the meter stick on debris 9 cms above floor level as determined at front pier (i.e. the bottom of the pier - the floor itself is ripped up); Note that at this level (about 9 cms or less) slabs descend in the debris out of sight, and are present above. The large tree buries the rear part of the center of the chamber, and completely covers the area where a column altar would be looked for. The note book at left lies on the ruin of the left pier, the rear left corner of which is in the picture.
- 92 0-12 Same view.
- 93 0-12 E Close-up of cut section of debris in chamber, left of center (see 34-91). The camera must have moved so that bottom of cut is not shown. Very little is lost, however. Meter stick rests on debris 9 cm above floor level as determined by bottom of pier (therefore somewhat closer than 9 cms) It is extended to 82 cms.



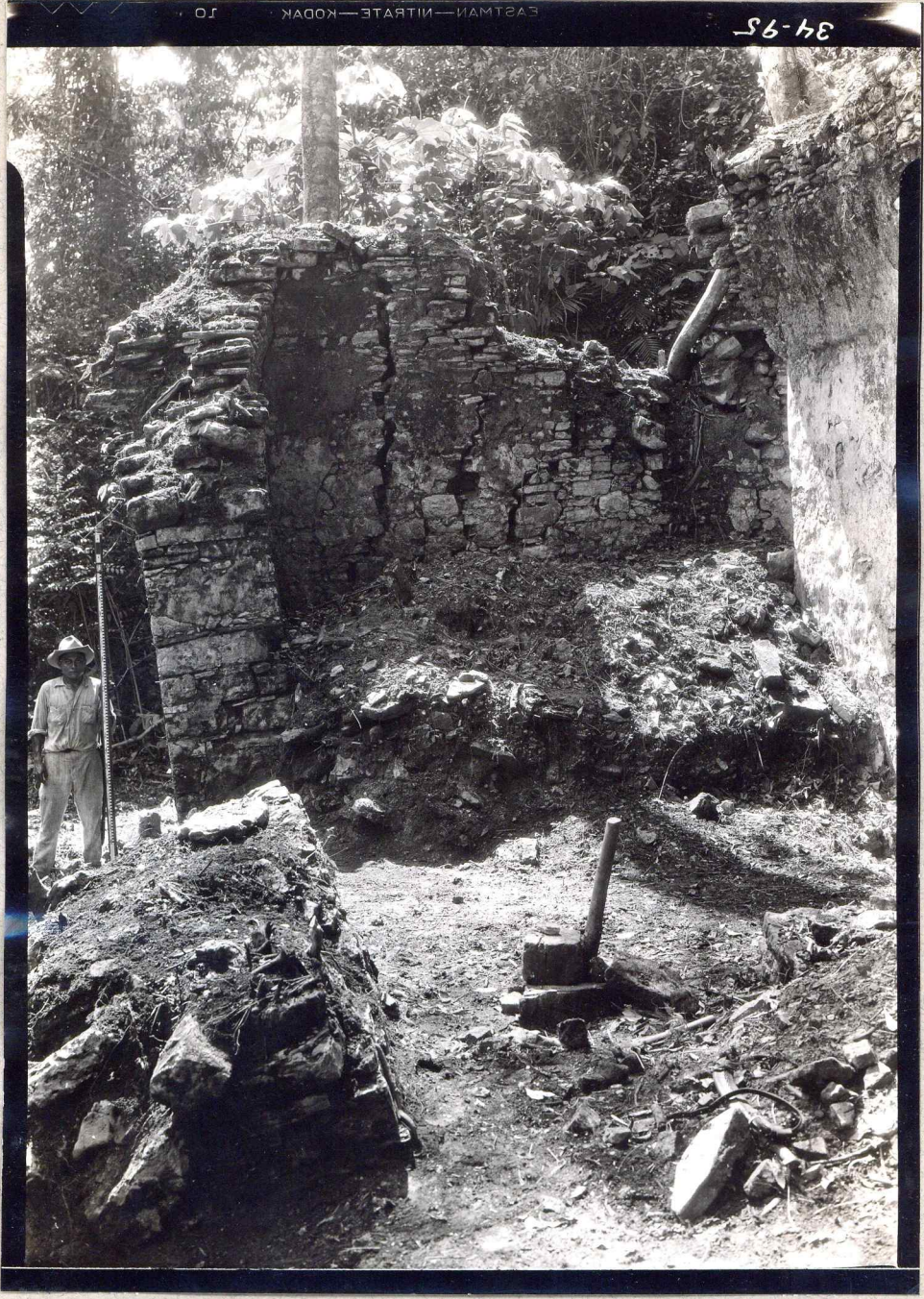
94 P-7 SW

General view from tower in front of right doorway, front.
Foot of boy at lower right indicate boy in front of
exit of depressed passage to sanctuary.

34-94



95 P-7 SE Right wall and anta, inside view, from debris over left end of front chamber. Right pier at left. Debris as left in 1931 (removed in foreground). The leveling rod outside rests on present plinth level there which is below zero (floor at sanctuary - i.e. rear of chamber). The jamb of the anta is intact, though leaning, to height of about 1.50; thereafter in ruins, giving a receding cross-section of anta and superimposed half-vaulting.



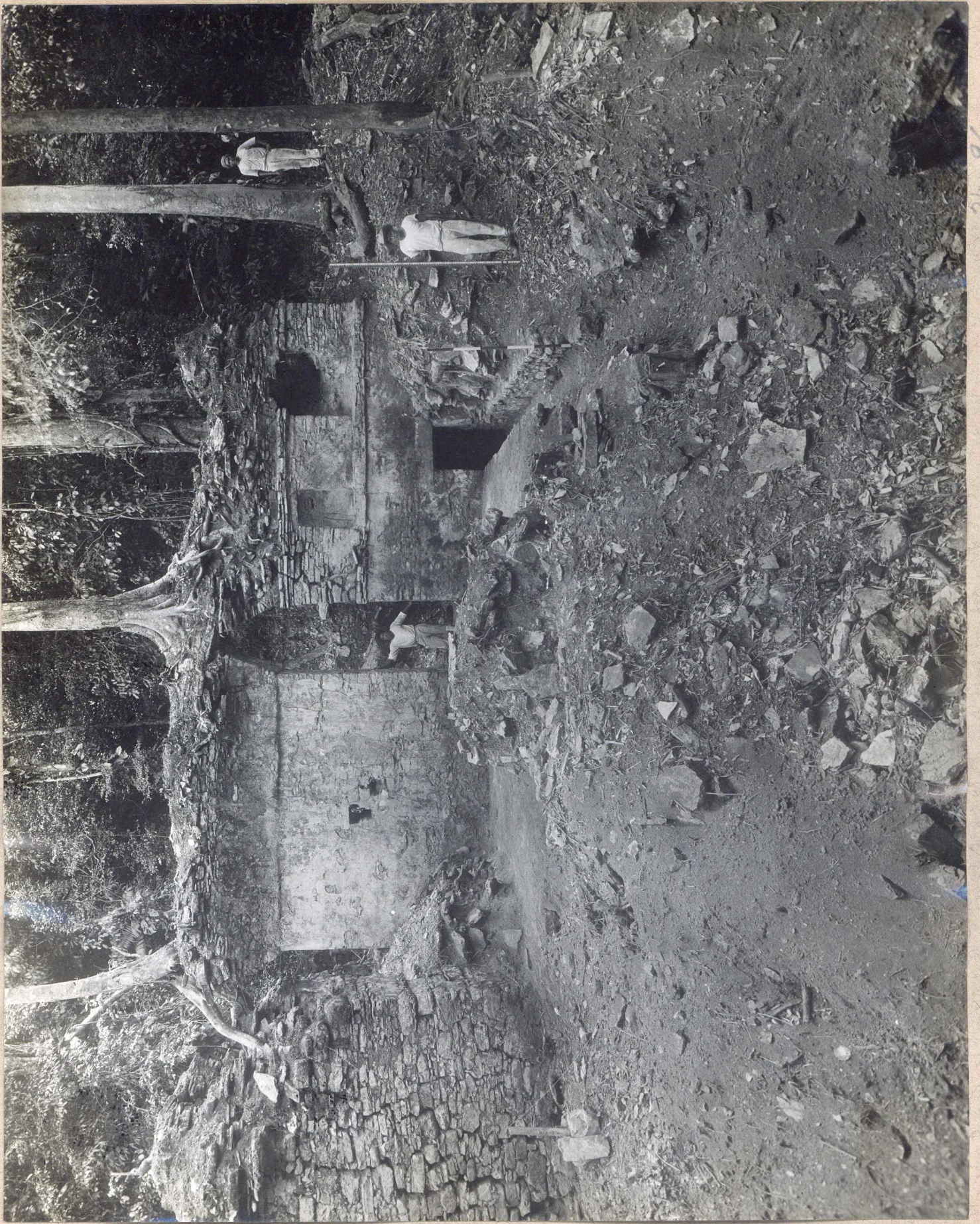
10622

96 P-7 SW

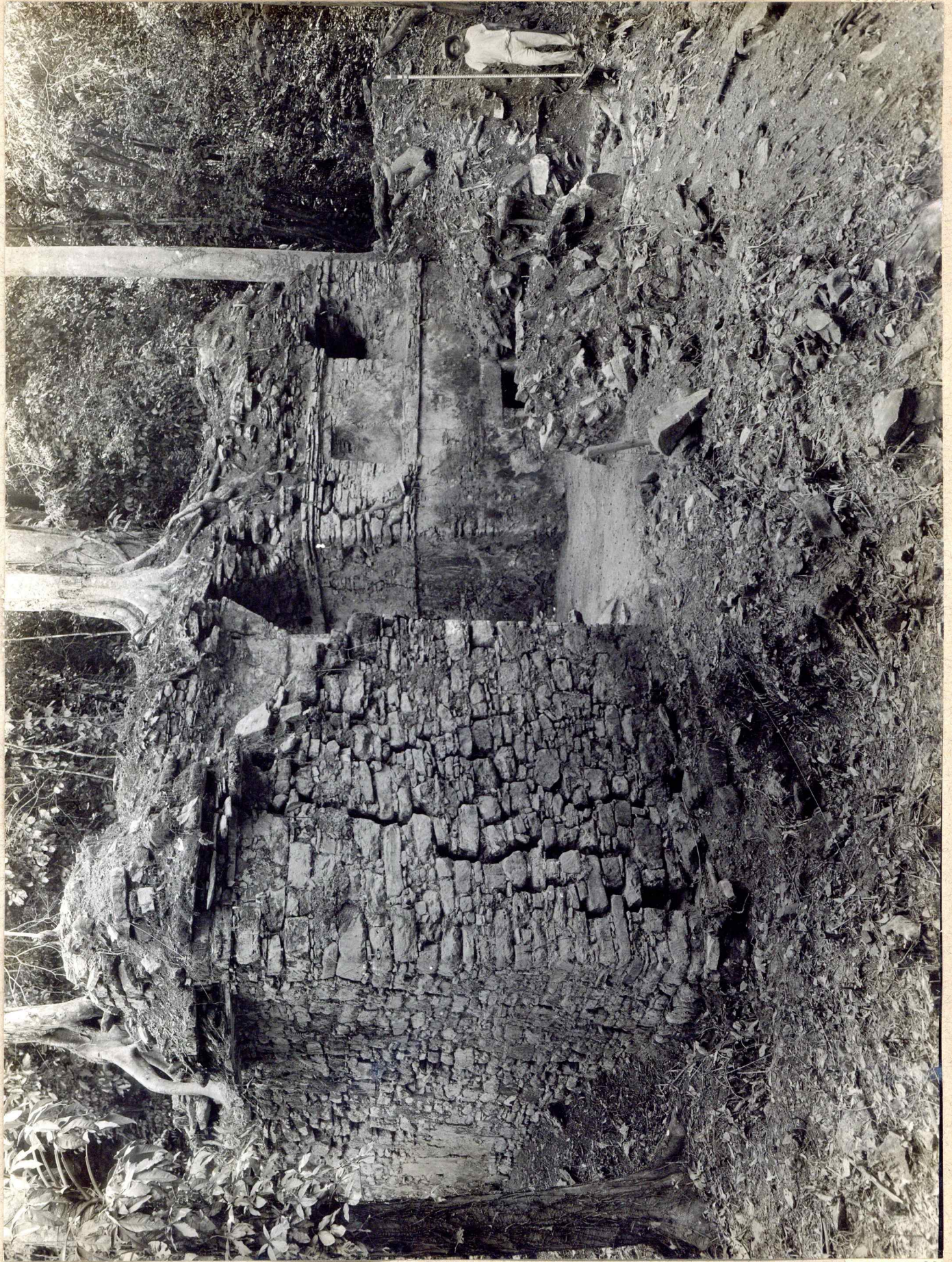
General front view from tower in front of right pier. Similar to 34-94, but from farther to front, with wide angle lens. Debris to left (right in picture) of depressed passage is undisturbed, and slopes up from it. Note dark color at bottom of right medial wall indicating level of debris before removal. Debris at right (left in picture) is undisturbed except that a little has been thrown on it from excavated area. Here it slopes up to end wall.

4
~~51~~ 34-96

34-96



97 P-7 W General view from outside right(W) corner.



34-97

10624

98 P-7 W View similar to 34-97 (light-struck at right).

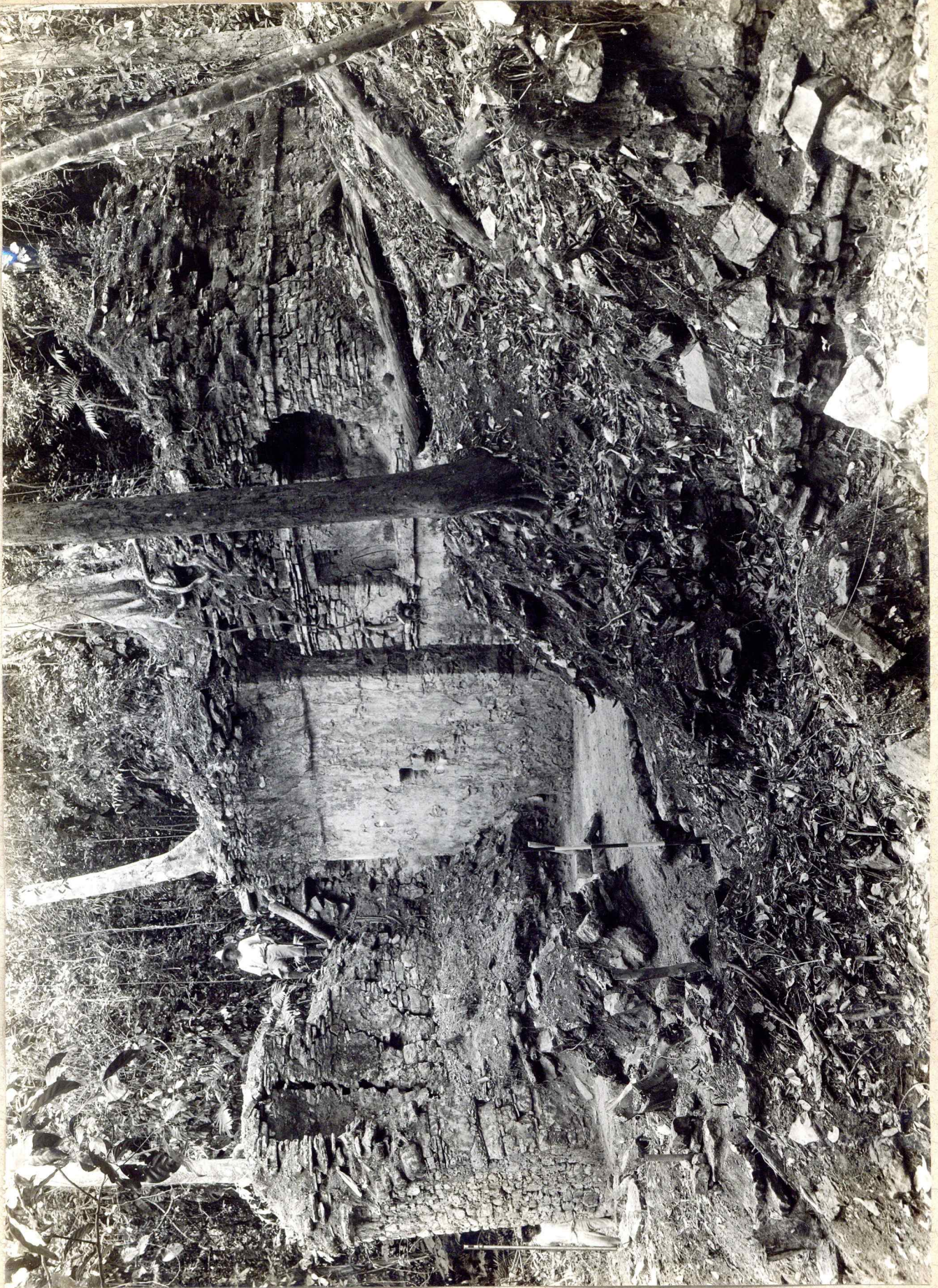


34-98

7

99 P-7 W General view from left front, close to left (S) corner.
Range-pole marks depressed passage; boy with leveling rod
is at outside right (W) corner (well below zero level).

34-99



100 P-7 S Left front corner and left end wall from same point on tower as 34-99; the two pictures can be tied together by noting trees and fallen stones common to both. The left end wall is at right; note ruined front facade, plinth; boy with rod stands on debris about 1.00 m deep - there is no big deposit of debris here and it looks like all wall stone - conclusion, the end vaulting fell in and not out, as at the right end it will eventually do.

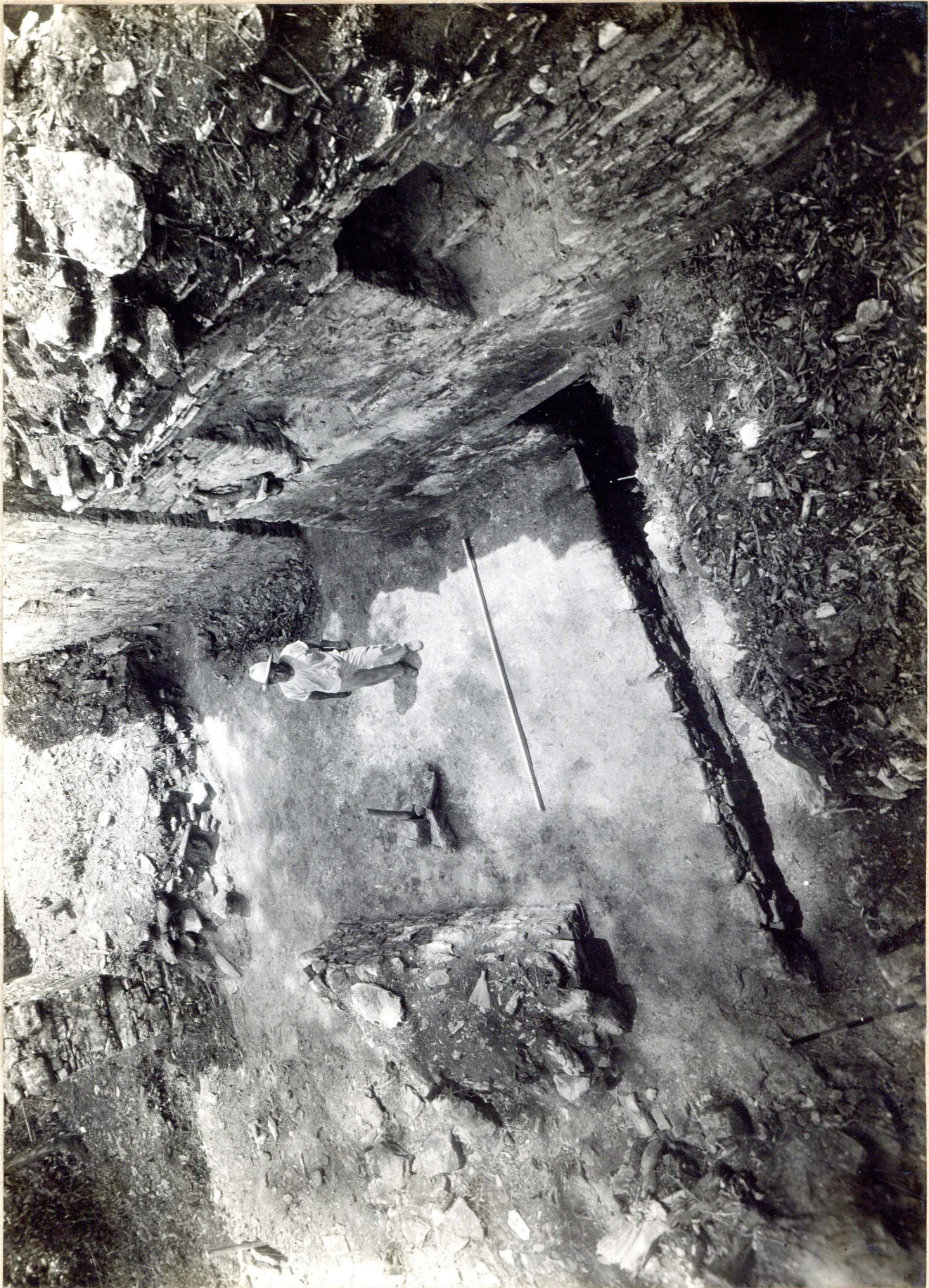


ЕВРАЗИИ — ПИЛТЯИ — КОДЖА

34-100

101 P-7 SE General view of right (NWly) half of front chamber, looking down on same from tower on debris over left end (camera about 4.00 m left of depressed passage, which see in foreground; Note debris left in right end, with meter stick vertical against cut section through it. Its shadow crosses large fragment of smooth surfaced river-pebble concrete believed to come from roof. There is considerable distortion in this fairly close picture made with wide-angle lens.

34-101



102 P-7 SE General view similar to 34-101, but from farther away,
showing roof and left end wall of central sanctuary.

161¹⁰

34-102
16629



103 P-7 SW Close-up of Sanctuary, front elevation view, from end of depressed passage. Note heavy stone lintel in place, with plenty of over-lap at the ends. The floor where boy is standing was taken as zero level for all 1934 notes on this building. Note that it seems to slope down to edge of passage, even after allowing for loss of surface there.

34-103

62



34-103

Fig 6

104 P-7 SE Left elevation (SEly side or end) of Sanctuary, in background; immediate foreground, left (SEly) end of mound. Camera about 1.00 outside left end wall, to the rear. The rod rests on approximate ~~XXXX~~ level (upper floor in left rear chamber) and is closed (i.e. about 2.28 m in length). It is close to the left (SEly) end of the masonry bench or altar of the left rear room.



ГОД — ИЛВАЈЕ — КОДРА

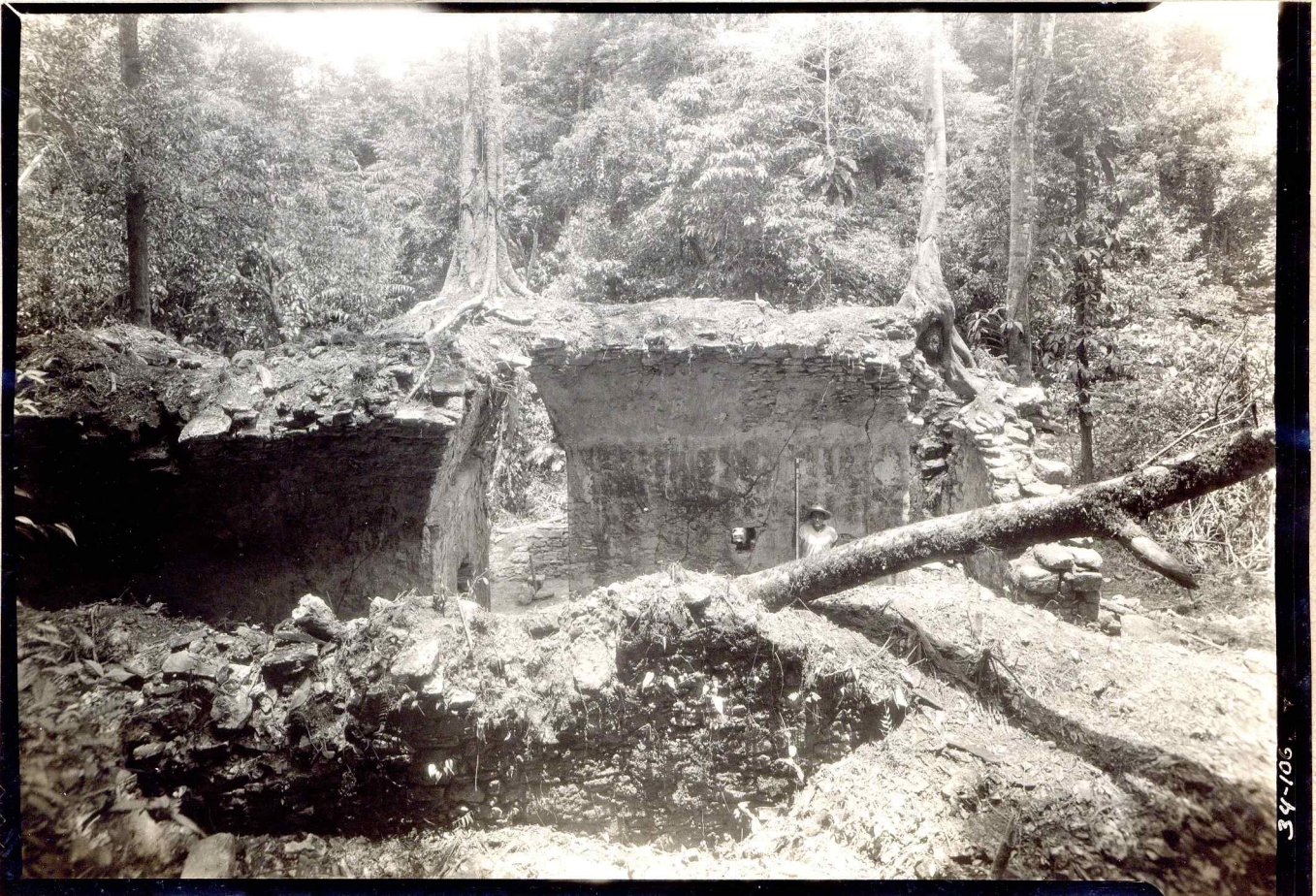
34-104

- 105 P-7 NE General view of right rear room, rear passage to left; in foreground outside of rear wall. From the terrace at the rear. Boy with rod stands on ruined (S^{ely}) part of bench altar, the bottom of rod about .35 m above ~~xxxx~~ rear floor level. Note the level ruined surface of the balanced medial vaulting - the irregular surface of the vaulting on Sanctuary at left. See 34-106 for a better negative of the same view.
- 106 P-7 NE Same view as 34-105, which see for notes. This is the better negative.



GOVERNMENT OF INDIA
MILITARY RECORDS

34-105

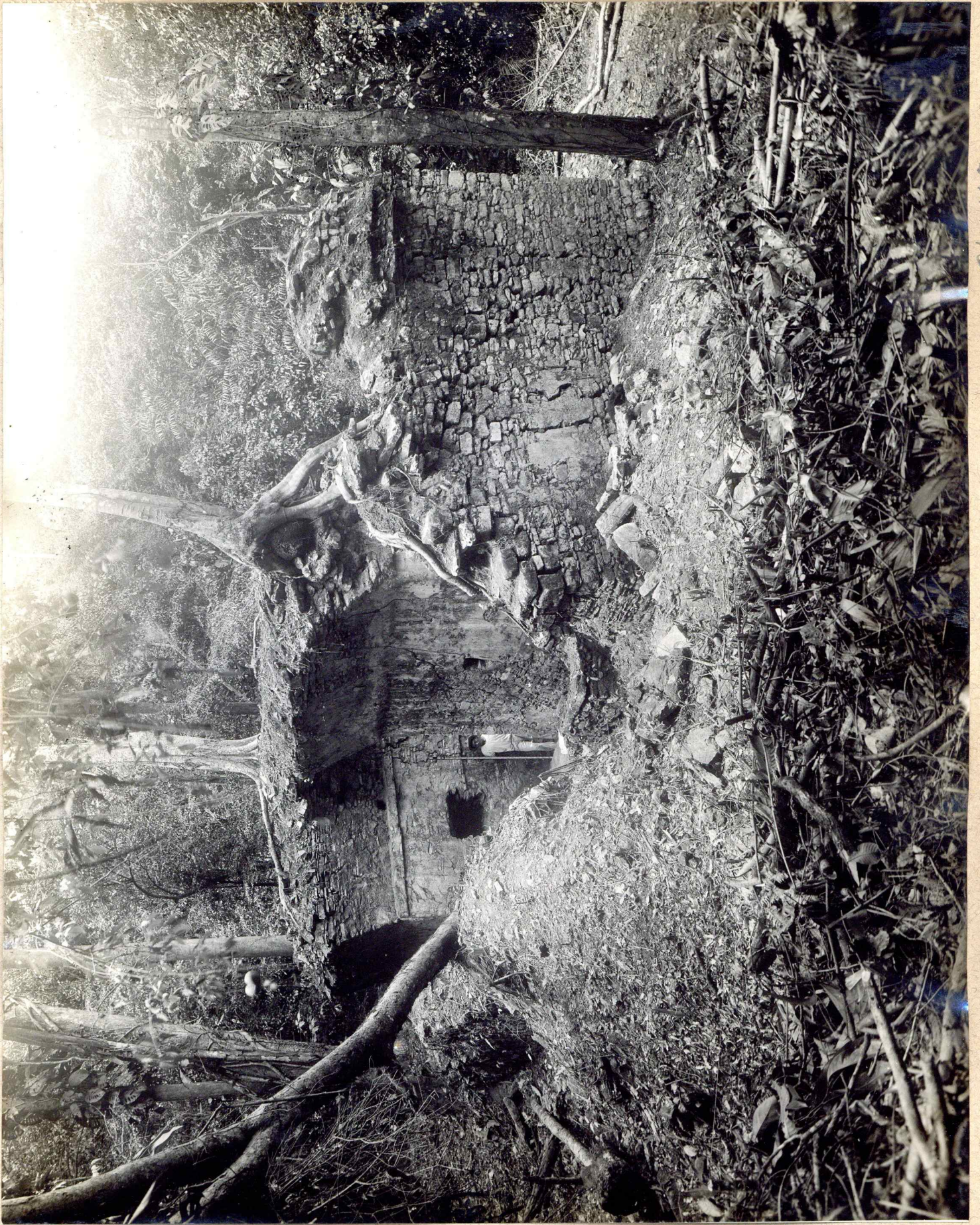


34-105

107 P-7 N General view from outside right rear corner, from the
the terrace or debris mound there; at front, note two-
member apron cornice and part of vertical upper zone
still in place; masonry of end wall; at left, the
plain back of sanctuary (no offset, no bands).

34107

(43)



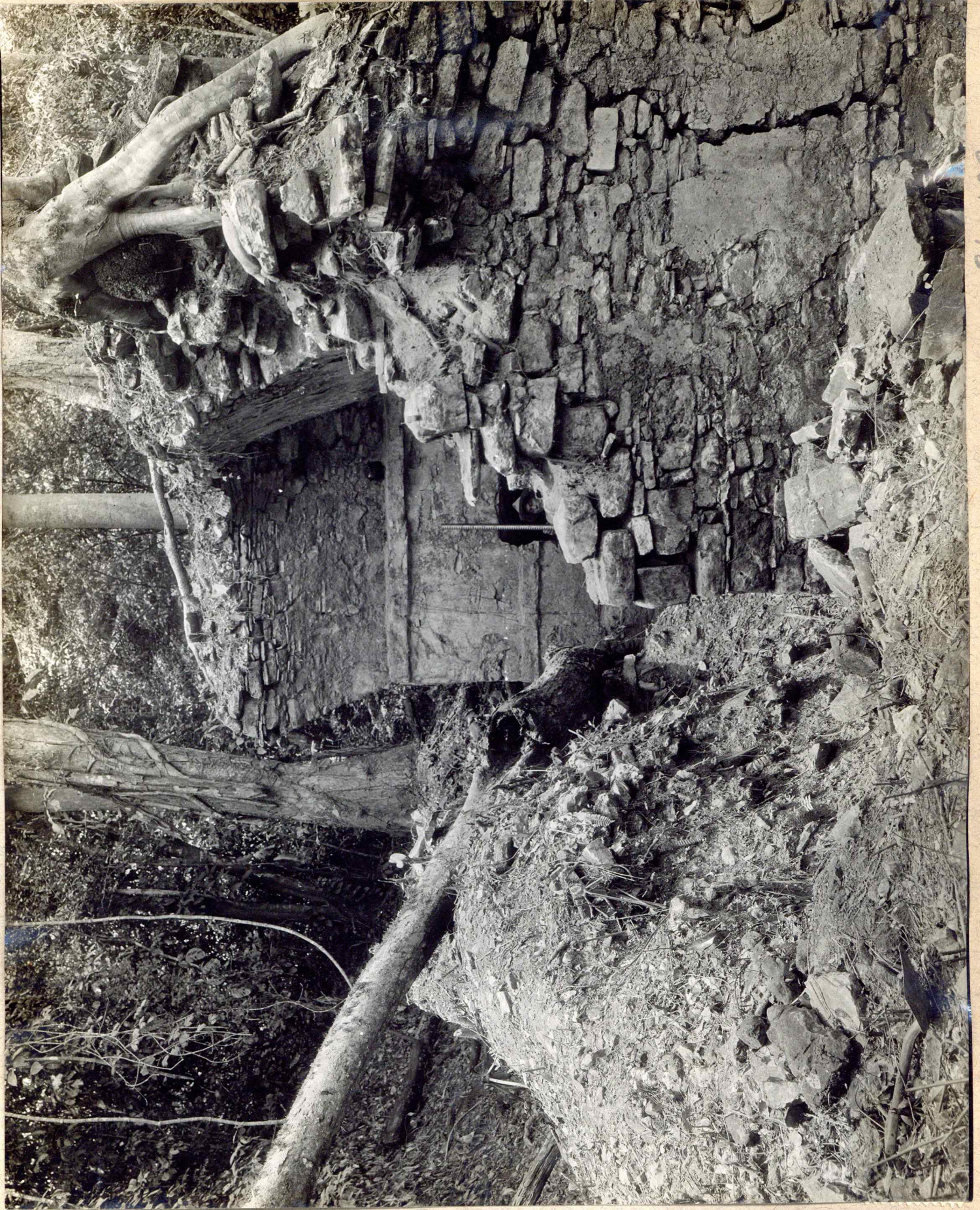
34-107

F343

108 P-7 NW

General view from outside right (SEly) end, at rear. Shows close-up of end wall masonry; slab construction of medial wall vaulting (in section); elevation view of rear part of right side of Sanctuary. Boy stands with rod on rear room floor. Note use of blocks near top of vaulting on sanctuary; opening of drain from otherwise closed chamber at top; remains of plaster on end wall; jamb of doorway in this wall.

34-108 (85)



801-43

F-965

109 P-7 SW Left rear room from tower on debris in left front room.
Upper left - sanctuary; boy stands in rear doorway, with
rod at outer jamb; note sill or "drain" running from
a point a little to right (in picture) of this doorway
toward front. It is below floor level there; upper right,
inside of left rear corner of room.

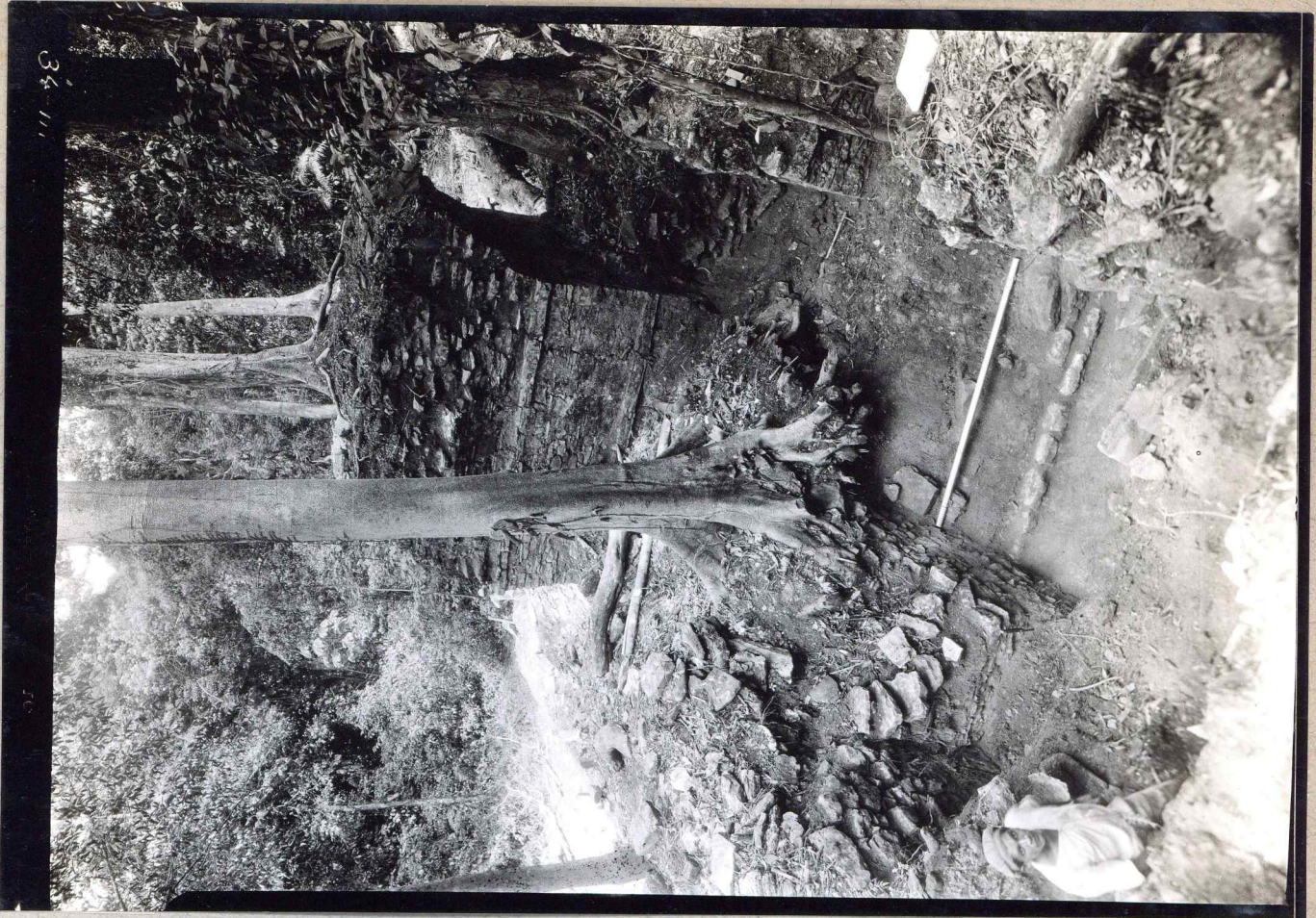


OF COURTESY OF THE

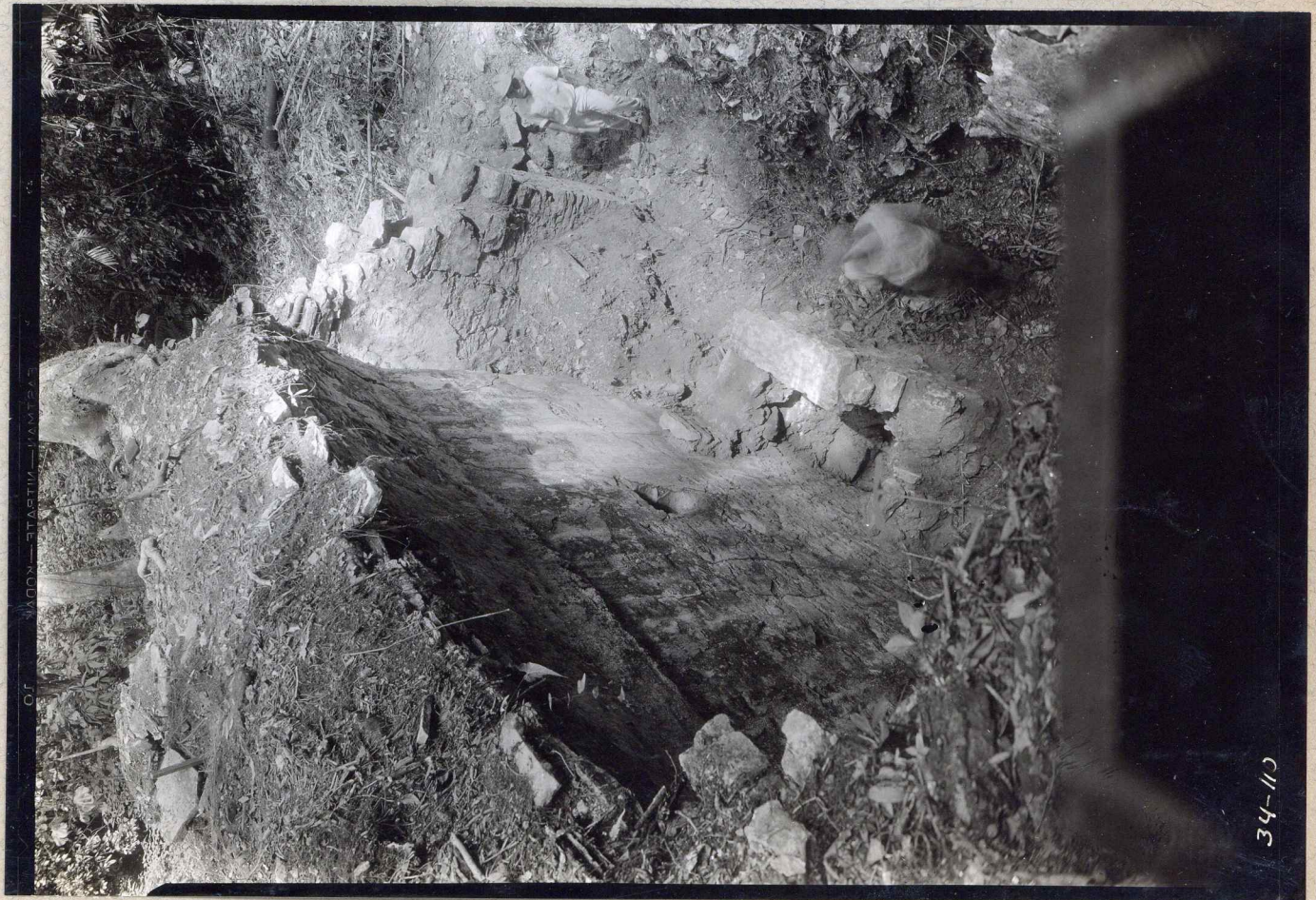
34-109

16631

- 110 P-7 SE Right rear room from Sanctuary roof. Note altar, with remnant of a masonry back or screen; doorway in right end wall; surface of medial vaulting - the ruler rests on river-pebble mortar found under the small slab next it, which was more or less loose.
- 111 P-7 E Left rear room and Sanctuary from tower 3.00 m. outside left rear corner. In background, just left of sanctuary, boy stands in right front doorway of front chamber, behind section of wall which serves as a pier; Just beyond boy in lower left note exposed portion of medial wall, and the SEly end of bench-altar abutting it. The meter stick, doubled to 42 cms., rests on latest floor level, near the corner of this altar. Below this note that a rough wall, in same plain as front of altar, extends beyond altar toward lower left of picture, and overrides the sill or supposed "drain" in front of leveling rod. The latter lies horizontally at about the latest floor level. Note that at the right (in picture) the drain or flue seems to consist of two steps. The large stone above these is fallen from above. Note slab vaulting on sanctuary - no bands or offset at rear (Cp. 34-107). Sizable slabs in the cut section of debris at near end of rear passage; NWly jamb of rear doorway.



34-111



34-112

34-112

- 112 P-7 NW Standing portion of rear wall from outside (this is the rear wall of right rear chamber). Rod at point 75 (on sketch sheets), meter stick at NWly jamb of NWly doorway in rear wall. Rod rests on point 75 level. In distance at left, boy stands in SEly doorway leading from rear to left rear room.
- 113 P-7 S Roof of Sanctuary from above and outside left front corner; Boy holds rod resting on debris a few cms. above floor of closed upper chamber, in which he stands. Shows ruined slab construction of vaulting; looks down into sanctuary niches.



34-112



ЕУСІАНІНІ—КОДАК

34-113

(69)

- 114 P-7 W Outer right front corner, close-up from tower, camera just below cornice level. Note two-member apron cornice, the slabs of the upper member more consistently heavy than the lowest course of the apron; the set-back vertical upper zone; that the upper zone still turns the corner, though little is left at the front.
- 115 P-7 N Right end wall looking forward at sharp angle. This was intended to give section view of cornice for which purpose a piece of canvass is hung out on a stick, like a flag. In foreground, receding crosssection of wall above lower intact portion of doorway jamb. The two white slabs projecting at top of wall (right center) are the lowest and highest courses of cornice. Here the lower is heavy, but upper is heavier, and still tied under an interior slab (see notes.)

out to
+ ext.

34/ 114

- 116 P-7 W Sanctuary from right front doorway of front chamber. Rod is on ~~xxxxx~~ depressed passage floor and passes in front of fallen (roof?) ~~xxxxx~~ concrete of river pebbles, with smooth surface, with vault slabs above (surely from the sanctuary vaulting (~~xxxxxx~~) the front half of which has fallen.
- 117 P-7 Looking straight up at cap-stones of vaulted doorway between front and right rear chambers. Rear chamber is at end of picture with most sky (left). Note here the overhanging slab; slab on edge instead of flat like the others next to the last remaining one at front. See drawings to understand this picture - it is clear that slabs overhung the vaulting of both sanctuary and medial wall. But roof beams were certainly not below this level - could have been at about same or above this level.

34-116



KODAK SAFETY FILM EASTMAN

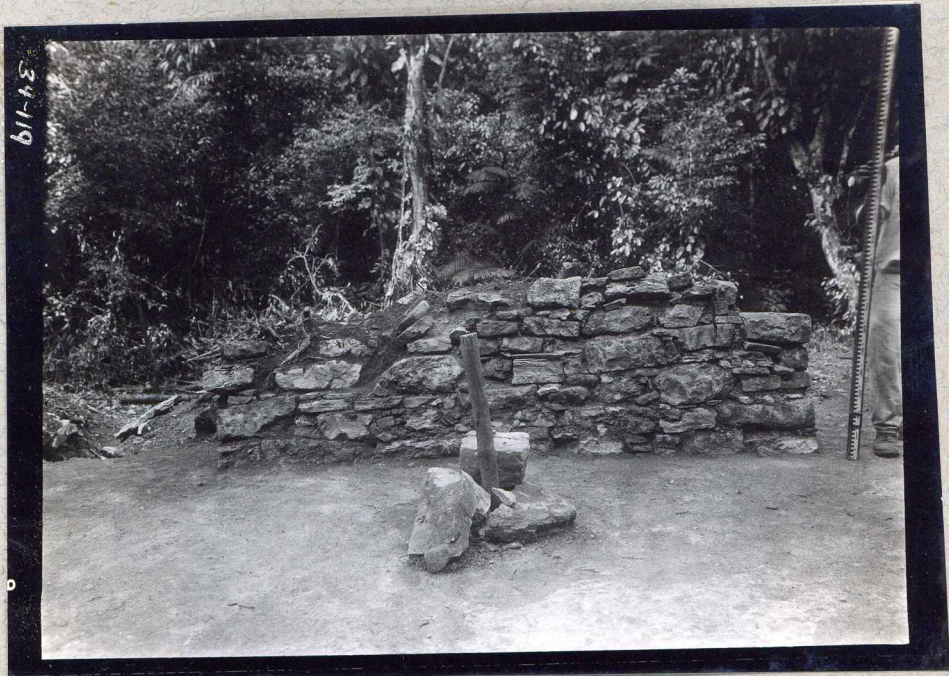
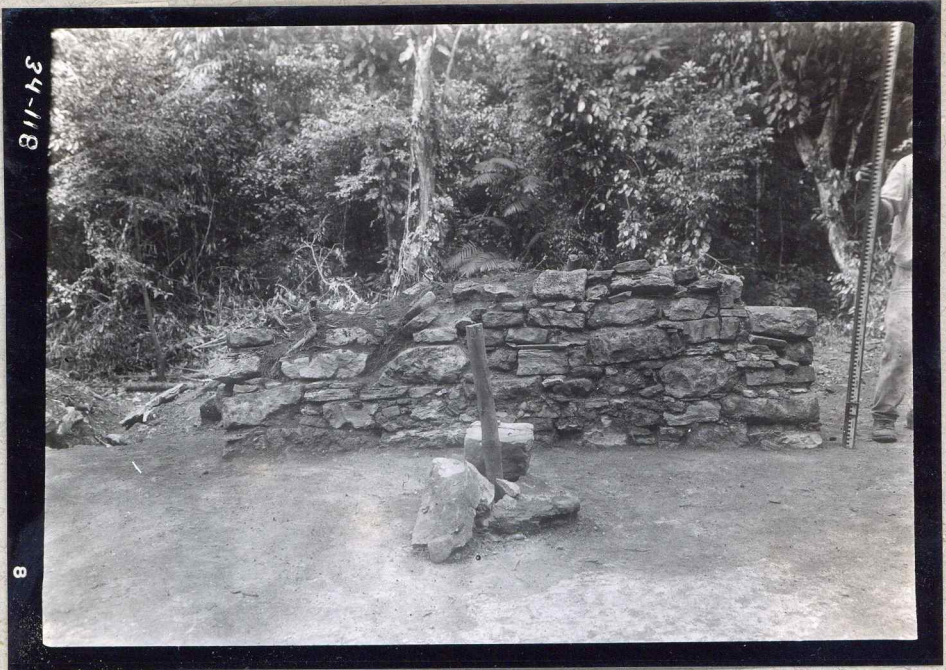
34-117



7

118 P-7 NE Inside of section of wall forming right "pier" of front chamber. Note that stumps indicate present top of this pier was original surface before excavation - they are good hard growth. Meter stick on wall at 22 cms.

119 P-7 Same view, another negative.



- 120 P-7 NW Sanctuary Altar, seen from hole in left wall made by predecessors of Maler. This view shows the inside of the altar. Note that top slab at rear has left the rear wall (wall falling forward; monolithic jamb (the right jamb is fallen, which makes this view possible). This is after excavation in 1931.
- 121 P-7 N Vaulting at juncture of medial wall vaulting with that of right side of Sanctuary. Note stone projecting from Sanctuary vaulting at top - see cross section sketch for its inner end - is at same level as cap-stone-like stone projecting from medial wall vaulting, which is in deep shadow. Tape hangs from corner under slabs projecting from both vault systems.
- 122---P-7

34-120/121 (64)



34-120 KODAK SAFETY FILM

16647

Fig 64



34-121

- 122 P-7 Same view, another negative - no better.
- 123 P-7 S Vaulting, rear right room; tape hangs from under side of projecting slab at point where it passes horizontally outside the plane of the soffit slope (medial wall vaulting). See sketch. Poor negative.
- 124 P-7 SE Left end wall; rod on point No. 51 of sketch notes. Note liberal use of small thick slabs, but of irregular blocks also. For other end see 34-125. (Cp. with 34-127, inside).



34-122



34-123



34-124

- 125 P-7 NW Right end wall including cornice and upper zone. Note generally thick slabs in upper course of cornice. The two flat stones of upper zone are on same level, giving slight indication of total height of entablature. Other data points to this as a reasonable height.
- 126 P-7 S Left (SEly) doorway of rear wall, from left rear room, camera just SE of bench-altar. Meter stick is about .70 m (? - stated as 1.70 in original note) above surface of lower course of "flue" or "drain" stones.
- 127 P-7 NW Left end wall, inside view (Cp. with 34-124). Note irregular blocks.



- 128 P-7 NE Rear wall, from outside, red at point 75 of sketch notes. Note free use of irregular blocks, together with small slabs. Absence of large stones.
- 129 P-7 S Bench altar, etc. in left rear room, looking forward from SEly jamb of left rear doorway. Meter stick stands on lower floor and rests against upper floor, which is here 37 cms above it; Trowel sticks in mortar-like deposit on upper floor. This includes river pebbles and mortar, so that we thought it was the floor, at first. Note that originally the lower floor ran under a wall or bench which runs to left (in picture* of meter stick, beyond the SEly end of the ~~altar~~ altar, and runs in other direction an unknown distance. This same lower floor runs over "flue stones at right, though a little higher, and under the wall there also. If this was a flue, it was below the lower floor. There is no trace of the other side of a "flue" now. The bench and altar appear to be a unit (check notes for later opinion?). Marks of upper floor on its face, at base of altar, could result from later bringing floor to level of bench. Was not able to follow these marks inside and under the bench, as we should be able to do if bench-altar is later than the lower bench. Note: the question of relative age of this lower bench and the altar should not be decided without careful attention to all available evidence, and considering all implications
- 130 P-7 N Vaulting of rear room, medial wall, showing two projecting slabs; also projecting slabs at junction with Sanctuary vaulting. See 34-121 to 123.