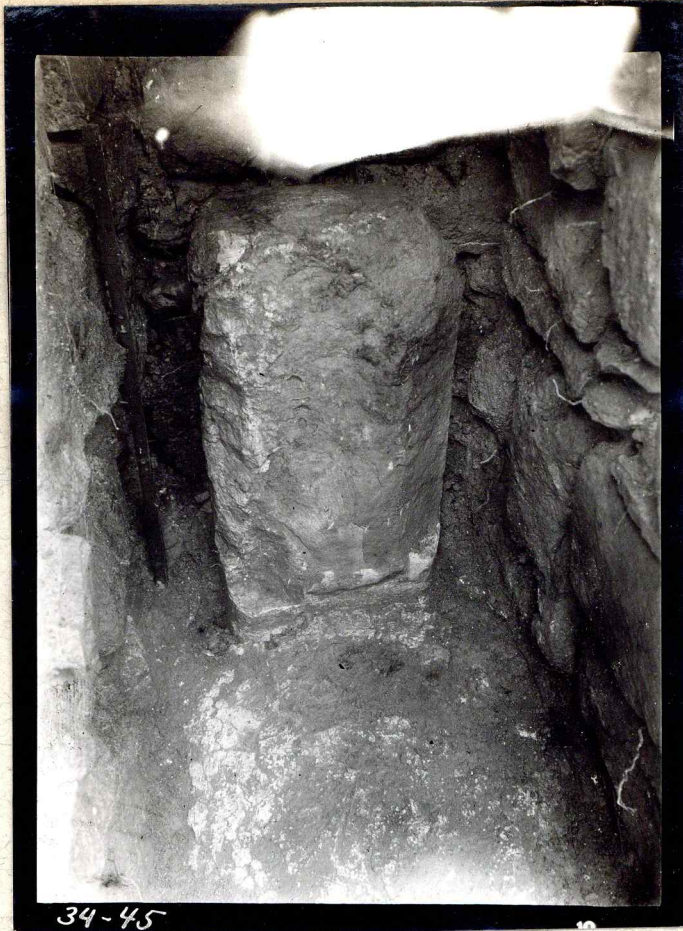




34-43

- 45 J-29 NE Column altar in position in niche, close-up (plate light-struck at top. Note how stone has scaled off in front. Floor is cut away a little at left to show nicely worked surface ~~xxxxix~~ at floor level and below. This shows at the very bottom in front. Note that corners were rounded, but stone approaches rectangular cross-section.
- 46 J-29 NE Very similar view of Column altar (see 34-45) but closer up, with better light. See notes under 34-45.



34-45



34-46

47

J-29

NW

Good view of masonry: left to right - left jamb of right pier; front and left jamb of left pier; rear wall and bench; left anta; in foreground, plinth. See notes for measurements of long blocks at corners.



34-47

27

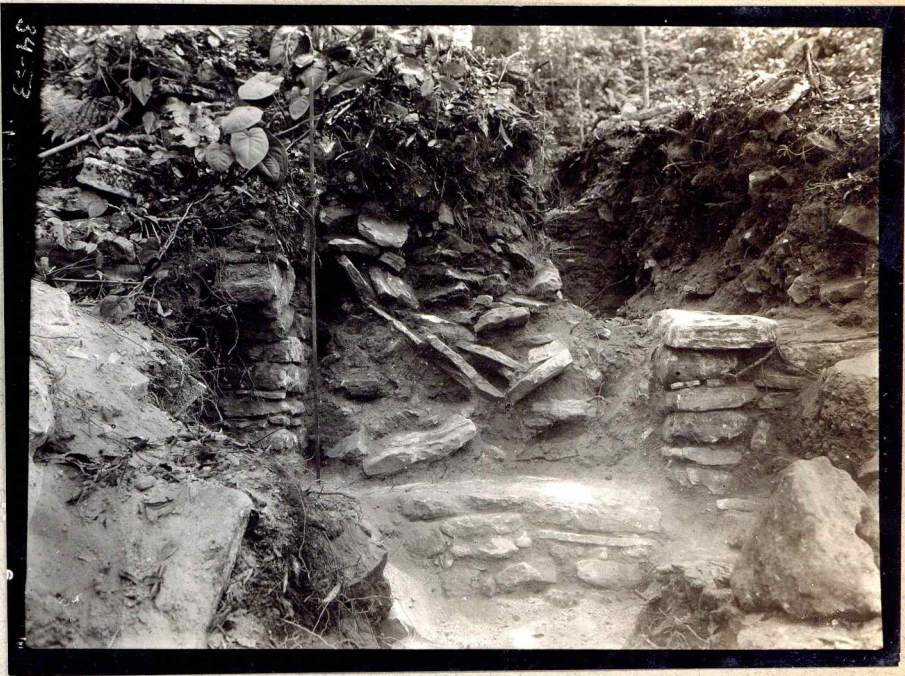
- 48 J-29 SE Detail showing left end wall (inside) and left jamb of left doorway; note that end wall rides over bench, and ends against rear wall without bending, at least at the bottom. There is a possible tie-in or bond between these walls about half-way up; the end wall is poorly bonded to anta at front in two places; note liberal use of small slabs in this end wall, as opposed to piers and rear wall.
- ~~49/1 J-29~~ ~~NE~~
- 49 J-29 NE Masonry of front wall at right (right anta); the right jamb of right doorway shows at right, the doorway filled with debris; this wall just showed above the surface before clearing a little in front, as shown. Stick extended to 22 cm. Wall is of heavy slabs or slab-blocks with occasional small slabs.
- 50 J-29 SE Left side (at top) of supposed original wide niche. Note slabs construction at left, which has been removed at right to show this feature; the whole slab construction must have been integral with the rear half-vault of the chamber, making it a cantilever, such as noted in built-on palaces J-6, J-22. Wire stake is at left rear corner of supposed early niche, ruller on present (after excavation) top of this side wall; note front of stake slabs in position which are apparently rear of early niche; on the right side, here invisible, much clear~~er~~ (34-51) that we are dealing with an early and larger niche.



56 J-29 NW Other side (see 34-50); stick at 22 cm rests on right flue wall at point formerly covered by cap-stone; Note vertical front face both above and below this; black discoloration on this corner (i.e. where flue entered original niche); This colored absent to the left on stones of the secondary niche, which is poor construction, really here mere hearting. It is fairly clear that flue originally served the supposed original niche, the top of which was higher than top of flue. See plans and sections to understand this photo.

52 J-29 S Rear wall of temple, stick extended to 1.62 m. Two or three slabs have been removed from cover of flue; note fallen slab in outer end of flue - the rest were found in place.

53 J-29 NE Cut section, jamb to jamb of central doorway, showing fallen slabs and masses of mortar (the latter darker toward the top, grey at bottom; a cap stone came from the trench at right at this level (70 cm above floor). Stick extended to 1.932 m. See 34-57 for later stage.

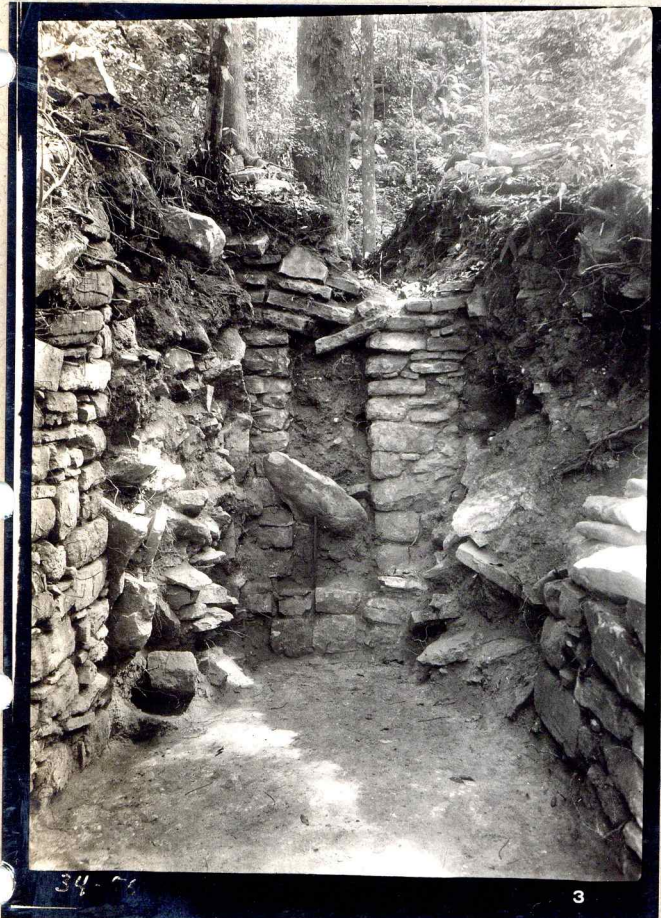


- 54 Same view, another negative.
- 55 J-29 NE Niche, filled with debris, after cutting trench back to it through center doorway; note long slab, probably a cap-stone, partly in niche, partly out side, in position; the end toward front is 1.10 above chamber floor; that at rear about 40 cm above same (i.e. about 8 cm above niche floor; note mass of gray mortar, small slabs toward bottom but practically none above; niche was protected by its lintels, which are broken but still in place.
- 56 Same as 34-55.
- 57 J-29 NE Cut section jamb to jamb of central doorway, on line of inner faces of piers; Note slabs, cap stone supported supported by pick handle, stick extended to 1.02 m. Just behind the stick, on the floor, was a sherd of light on dark orange ware.



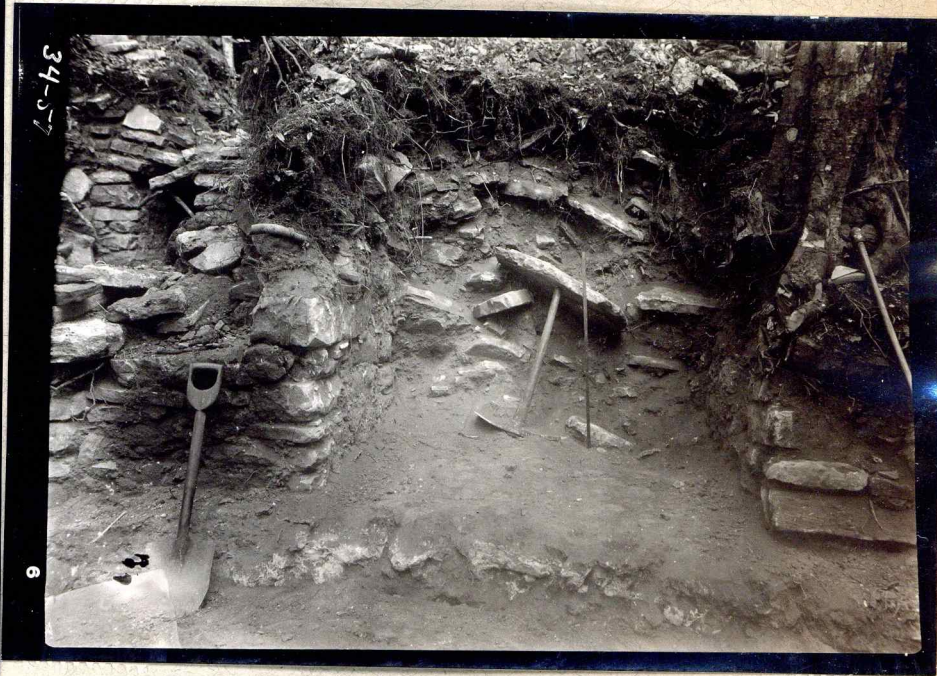
34-54

7



34-56

3



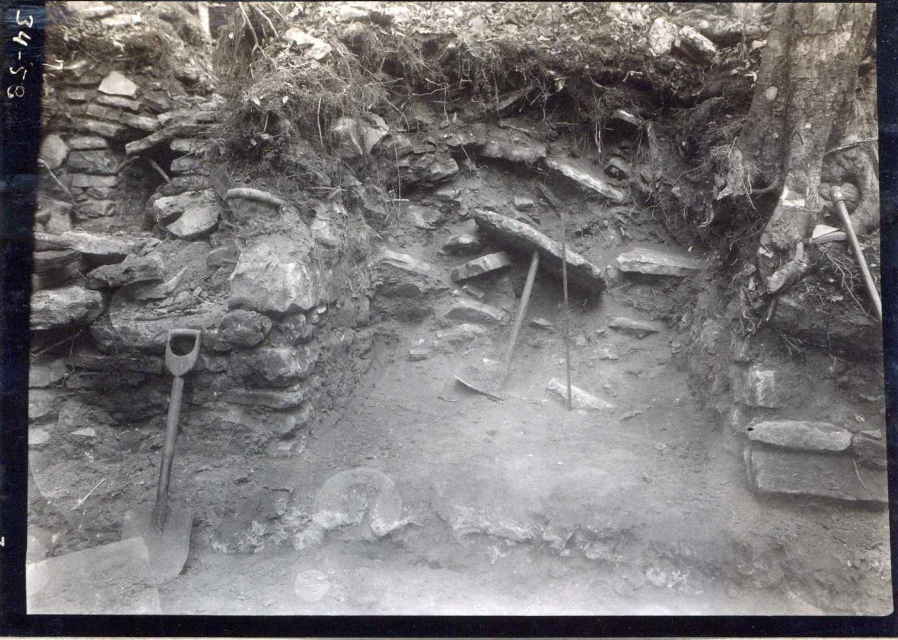
34-57

6

58 Same view, another negative.

59 J-29 NW Center Doorway and cut section through debris from its right jamb to rear wall, seen from an angle. This is the ~~left~~ doorway and shows curved surface of debris from rear to point over rear part of left pier; similar section from rear to point over center pier is also visible - surface there is level or nearly so, showing that left end of building has collapsed more than right, beginning at about the center. Meter stick @ 1.02 rests on floor. Note stone directly on floor, plentiful gray mortar, slabs. One of these has a curved section at edge, marked by trowel just over it; another, a thin slab with worked edges is supposed to be marked by a wire pin.

60 Same view, another negative.



61 J-29 SW Section just right (SE) of flue, showing slab-masonry construction giving way to more nondescript masonry, at least below more or less disturbed level; camera box is just to rear of slab masonry (about 1.50 forward of rear wall which is outside picture to right, and marks approximate location of fragment of M.S.S. No. 13, after removal. It is in a semi-solid fill area, with mortar. Since therear wall (here not visible, rose to height of the slabs at left, this area cannot be result of falling debris, except at the upper levels; therefore the sculptured fragments was placed in the fill and is older than building.

62 J-29 NW Cut section through debris, behind right pier. Note slabs directly on floor. For similar but better view see 34-63.



34-61



34-62

11

63 J-29 NW Cut section through debris, from behind right pier to rear wall of chamber (closer-up than 34-62, and better lighting. Note slabs directly on white plaster-finished floor.

34-63



- 64 J-29 SE Left side of upper trench, and surface of left half of mound behind chamber; Stick lies just beyond vertical left face of supposed original and wider niche (i.e. not of the flue); note the slab construction at left; over the flue this extended clear to rear wall of chamber - it seems to peter out on this side toward the front, probably because building has collapsed more at the left end. Rear wall of earlier niche abuts the visible left side; meter stick extended to 1.22 indicates approximate depth of this original niche.
- 65 J-29 S Cut section of rock fill of upper main pyramid terrace (top of pyramid proper) - the right or SEly depression carried deeper. Stick extended to 1.48 m; the cut went down to 1.50, and pure rock fill could be seen 30 or 40 cms deeper. Fill includes very large stones.



WALSLEY MOUND
34-64



34-65

- 66 J-29 Miscellaneous Sculptured Stone No. 13, light from stone's left. Spotted negative - see next print (34-67).
- 67 J-29 Miscellaneous Sculptured Stone No. 13 light from stone's left. Note legs of reclining figure at lower left, head-dress of principal figure at upper right; Eight columns of glyph-blocks at left, under-cut at bottom to allow for design panel, like Lintels 2, 4, 5 and probably 7. Double-column at right. Meter stick @ 22 cm.



34-66



34-67

68 J-29 Same as 34-67, light from stone's left.

69 J-29 M.S.S.#13, light from stone's right.



34-68

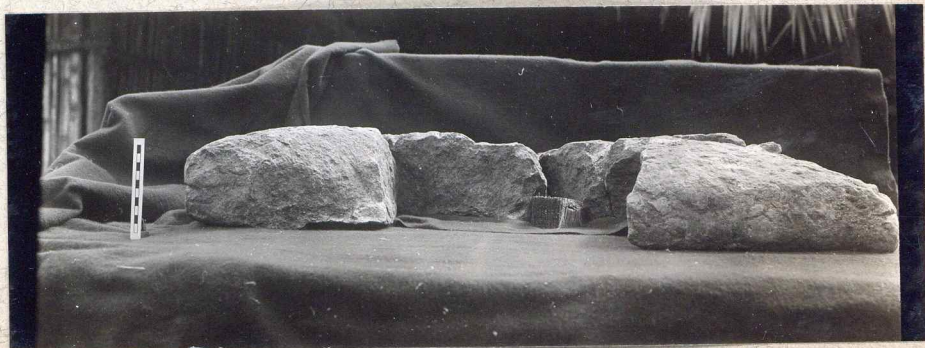
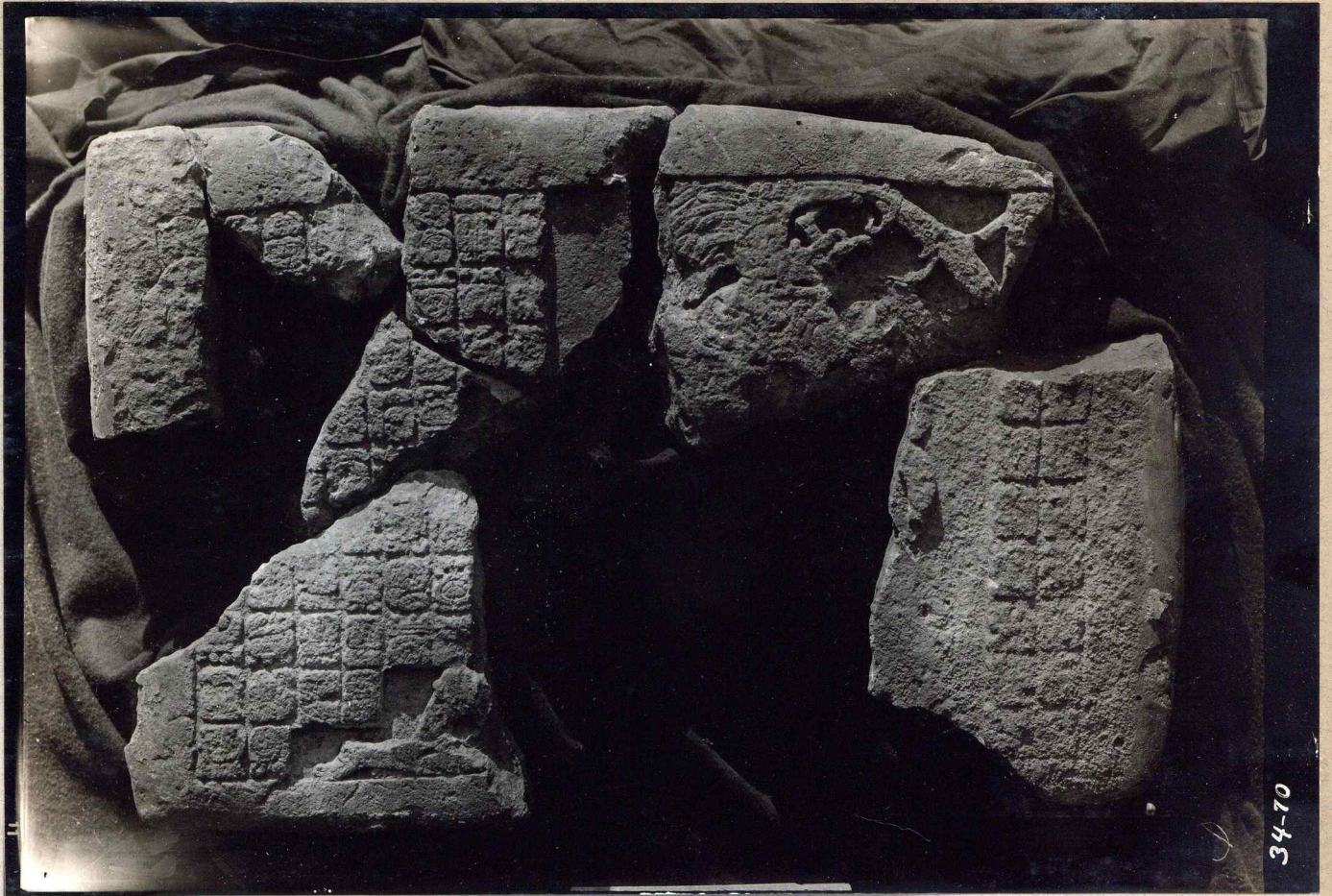
10



...MILSVIE...KOUVK

34-69

- 70 J-29 M.S.S.#13, light from above.
- 71 J-29 M.S.S.#13 - right edge (stone is face down) showing turtle-back - note the ornamental groove. Scale is cms.
- 72 J-29 M.S.S.#13 - bottom edge (stone face down) showing turtle-back - not the beginning of groove at either end, its absence on the bottom edge. Scale is cms.



- 73 J-29 M.S.S.#13 - stone's left edge, (stone face down) showing turtle back, ornamental groove (compare with 34-71 for other end). Scale is cms.
74. J-29 M.S.S.#13 - top edge (stone is face down) - showing turtle back, ornamental groove.
- 75 J-29 M.S.S.#13 - back view (stone face down) from above and at an angle.

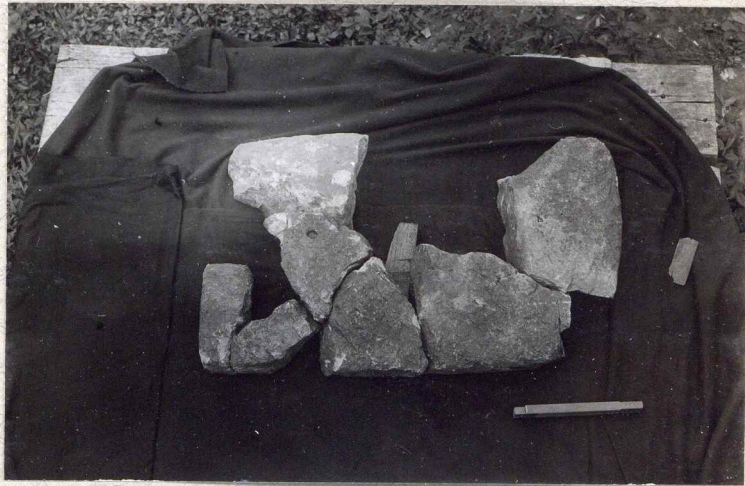
76 J-29 Building stone (slabs) from excavation of front chamber and debris in front of it. Left to right, Nos. 1 to 5 in notes. (See also 34-77 and 34-78.)



34-73



34-74



34-75



34-76

- 77 J-29 See 34-76 - additional slabs, Nos. 5 to 10 in notes. (L.-R)
- 78 J-29 See 34-76 and 77 - slabs Nos. 10 to 13 (left to right) with No. 14 above.
- 79 J-29 Principal fragment of stucco head from debris in chamber, front view. Note large staring eyes, root of nose which is broad, and flat and sunken; enormous overhanging supraorbital ridges; receding forehead; plain head-band or fillet with beads at side and center. See also Nos. 80, 81 and 83 for same view, No. 82 for profile. See also Nos. 84 and 85 for ear-plug, rosette and two fingers, probably from same figure. Scale is cms.

The number of this fragment is NE-4-10.

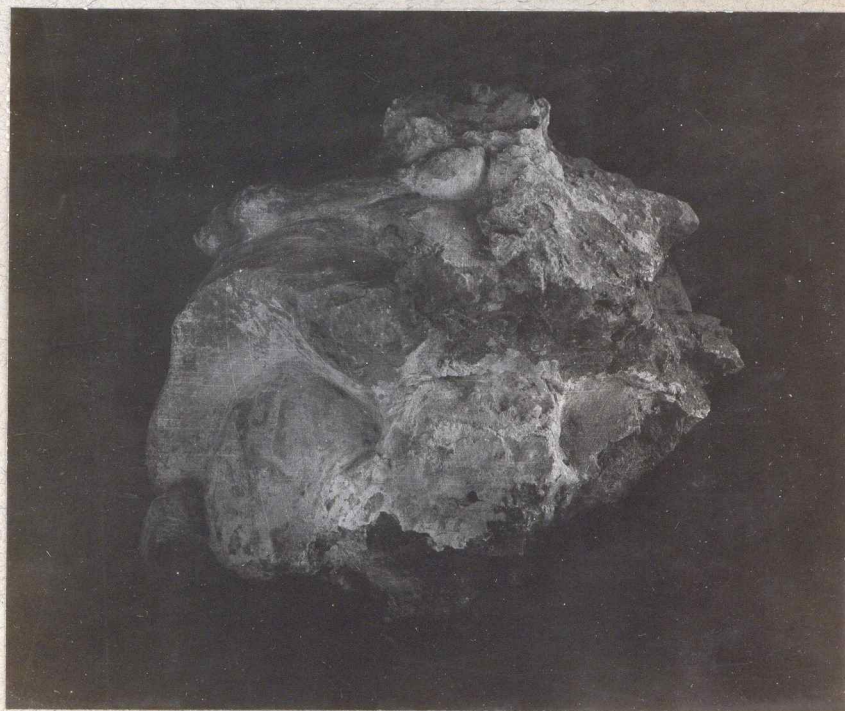


80 J-29 Same view as 34-79.

81 J-29 Same view as 34-79.



34-80



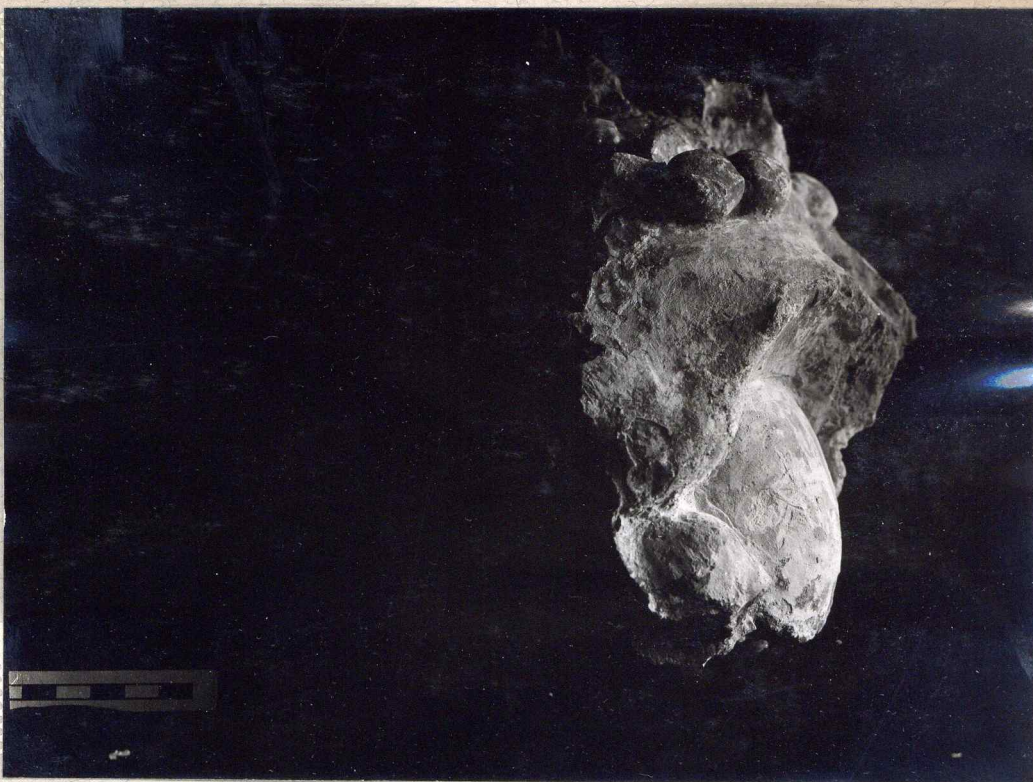
34-81

82 J-29

Profile view of principal fragment, stucco head (Cat. No. NE-4-10). Compare with full-face view in 34-79. Note flat ornament pendant from fillet band on receding forehead, projecting supraorbital ridges, flat sunken root of nose; also that there remain the broken-off base of an ornament or head-dress at center, behind the fillet. The hard white plaster which had been smeared over this piece has been removed from the parts visible in the print. But see it in the full-face views (34-79) on the head's left. Scale is cms.

83 J-29

Same view as 34-79 (poor negative).



34-82



34-83

84 J-29

Left to right; ear-plug, rosette, two fingers seen from above (back of hand), fragment of moulding - from debris in front chamber, probably part of a complete figure of which the head shown in Nos. 34-79 to 83 was a part. Ear-plug rosette and moulding are seen from the front. Cat. No. of all pieces is NE-4-7. Scale is cms.

85 J-29

Same pieces as 34-84, minus border fragment. Left to right; ear plug, rosette and fingers, seen from the side. Cat. No. NE-4-7. Scale is cms. These stucco ~~figures~~ pieces were covered with the same hard white plaster which was smeared on the head (see 34-79 et seq.). Note that the ear-plug stood out from the side of the face as on the R-5 head; that the rosette is on a band; that the fingers are gracefully flexed.

86 J-29

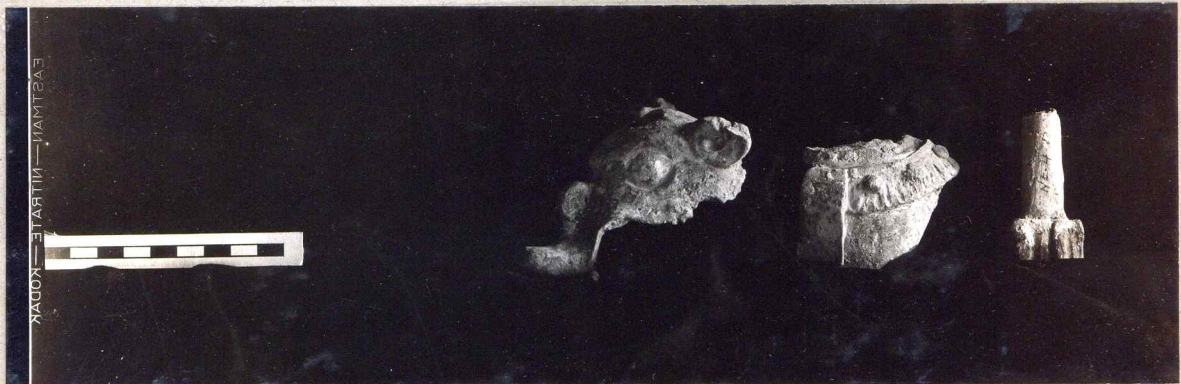
Pottery fragments (Cat. No. NE-4-11) all of which were smeared with white plaster like the stucco pieces of 34-79 to 85. Left to right; hollow head of long-nosed animal; hollow fragment of figurine (left half of chest?); ornament? Scale in cms. See field sketches. Also #4-89 for full-face and 34-160 for top view of grotesque head.



34-84



34-85



34-86

- 87 J-29 Pottery figurines and figurine heads; left to right, Nos. NE-4-11, NE-4-2, NE-4-4 and NE-4-9. Full face. Sca. cms.
- 88 J-29 Same figurines as in 34-87, in same order. NE-4-11 is left profile, the others right profile. Scale in cms.
- 89 J-29 Pottery figurines and figurine heads, left to right, Nos. NE-4-2, NE-4-4, NE-4-9 (the three right pieces of 34-87 and 88, but in left profile); plus the large grotesque head No. NE-4-11 of 34-86 and 160, here seen full-face. Scale in cms.
- 90 J-29 Two glyphoid sherds Nos. NE-4-1 and NE-4-1. Scale in cms.
Scale in cms.



34-87

NE-4-

-11

-2

-4

-9



34-88

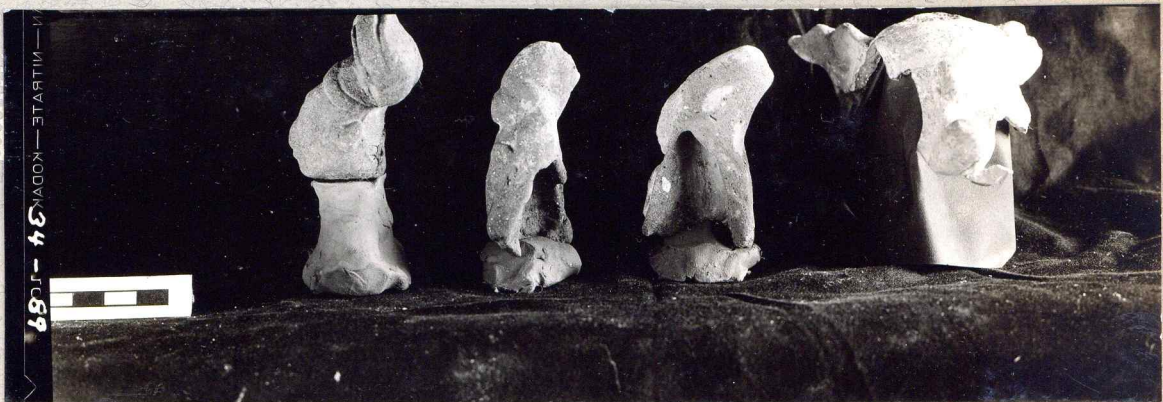
NE-4-

-11

-2

-4

-9



34-89

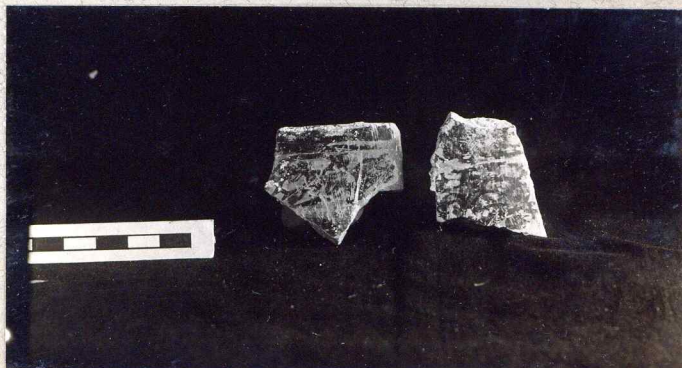
NE-4-

-2

-4

-9

-11 Another piece of this number



34-90

