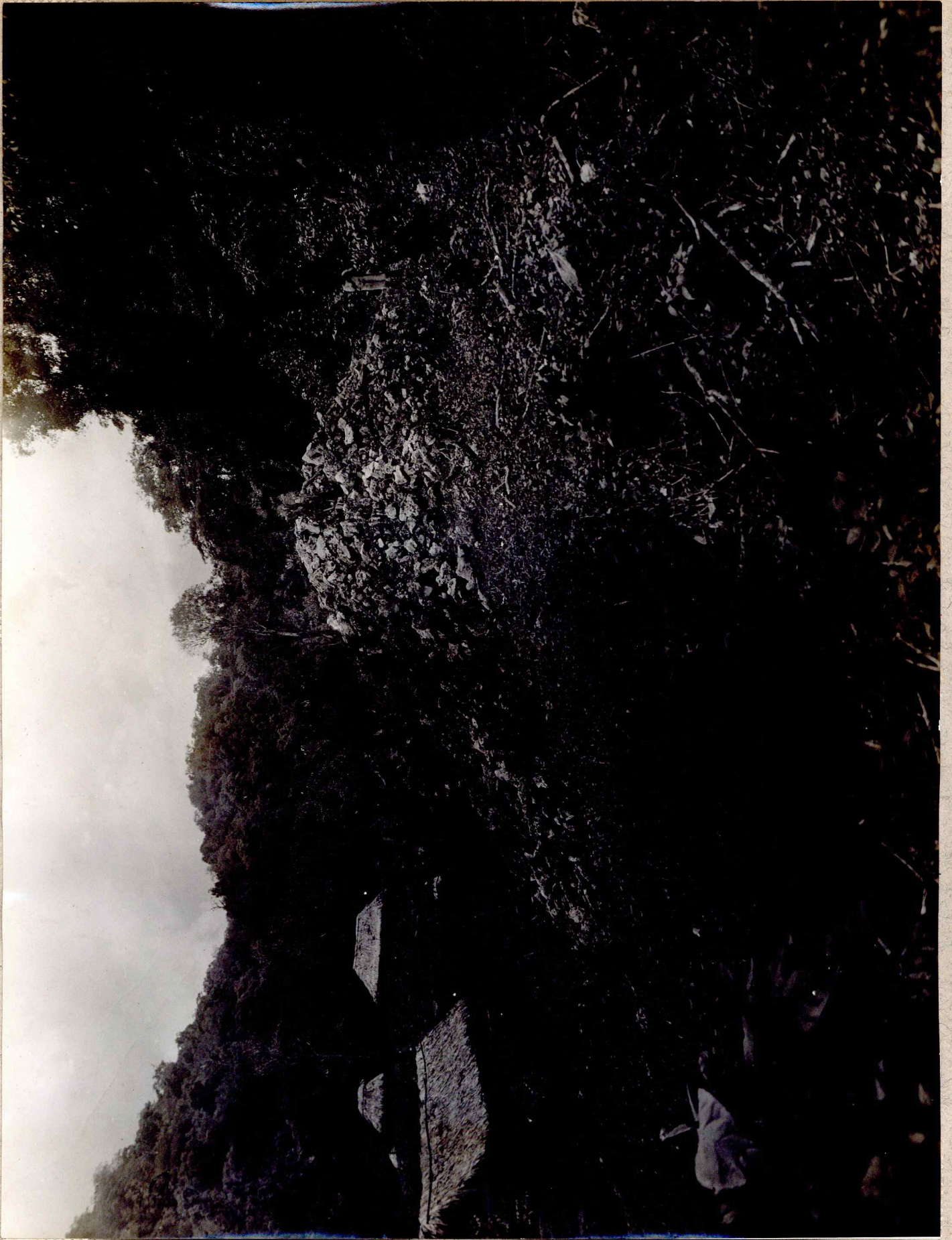


Piedras Negras  
FIELD CATALOGUE - 1934 Photographs.

2 1934.

<u>1934</u> <u>No.</u>	<u>Str.</u> <u>No.</u>	<u>Dir.</u>	<u>Remarks</u>
1	F-2	NE	After clearing bush only - tripod on terrace running NE from Str.F-2.



34-1

- 2 F-3 W Rear Facade - note pit showing platform wall- not so well chinked as free-standing wall above.
- 3 F-3 NE From tower to N. - front facade exposed by trench - Note round stone "portable altar" exposed on floor, right, behind doorway. Meter stick same position as in Nos. 34-9 and 34-10. Note secondary pavement, platform running below.

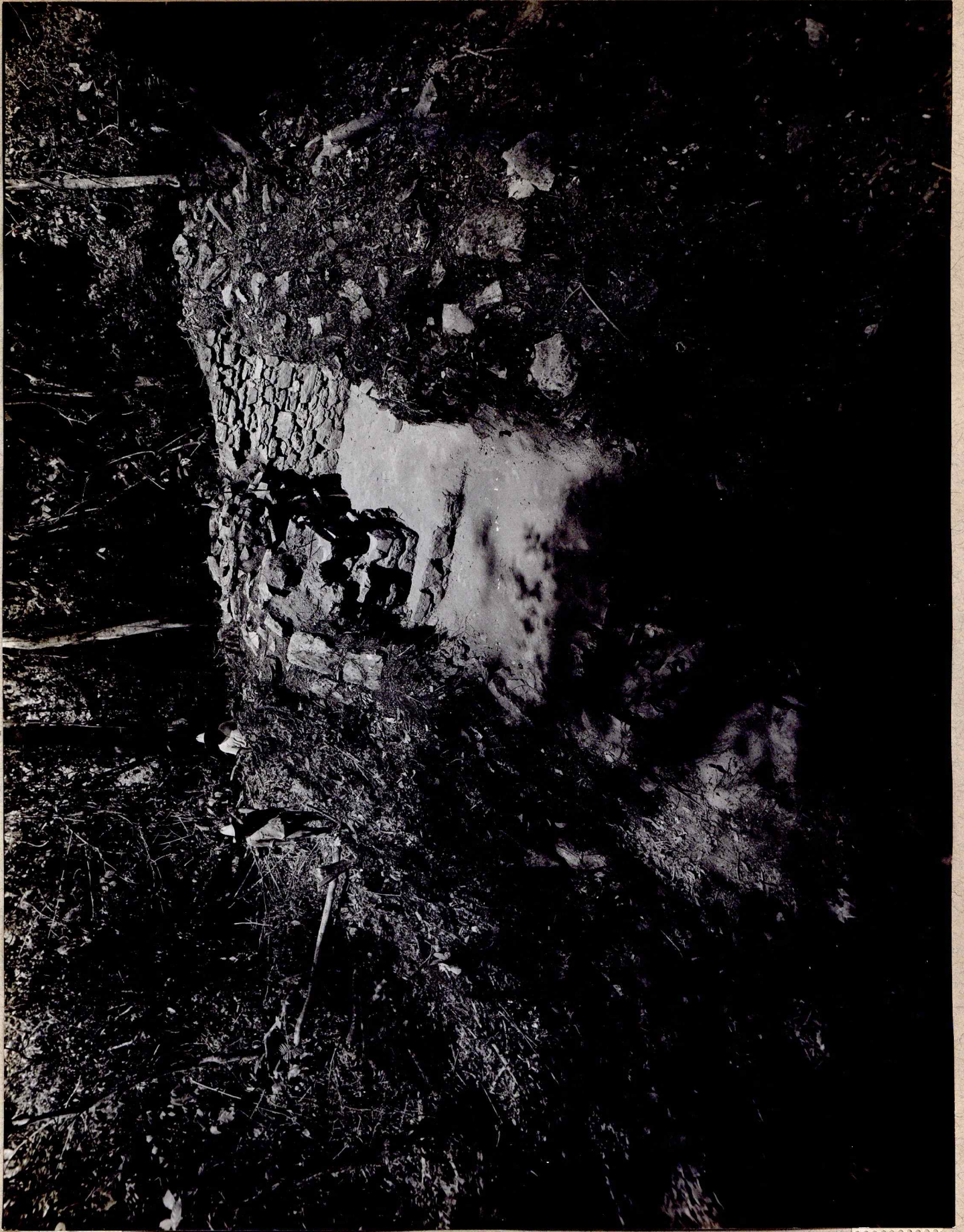


2-4-3



3-4-3

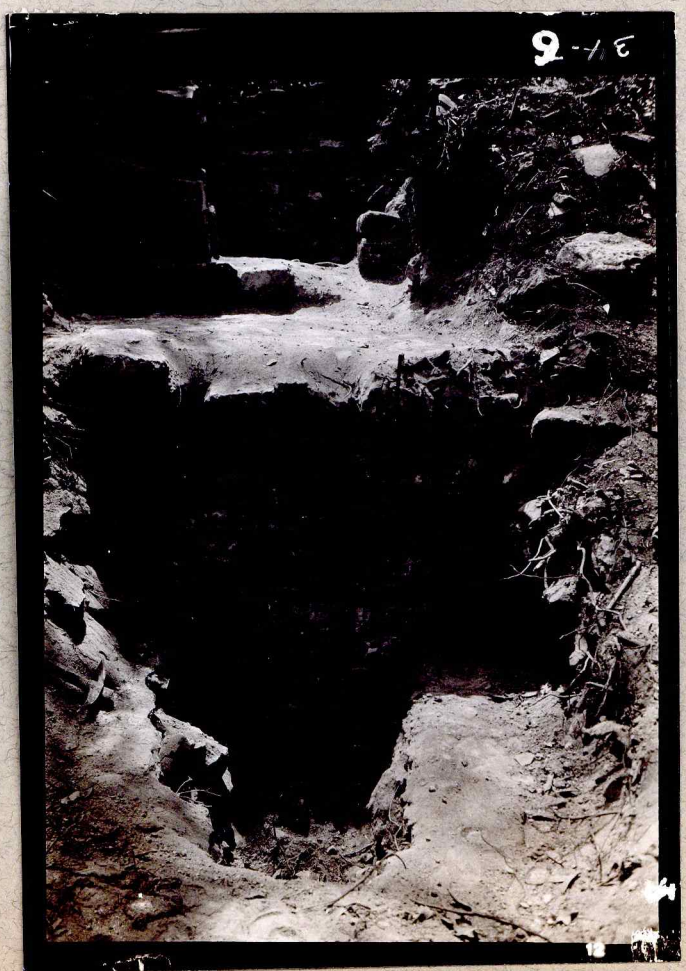
4 F-3 NE Same as 34-3



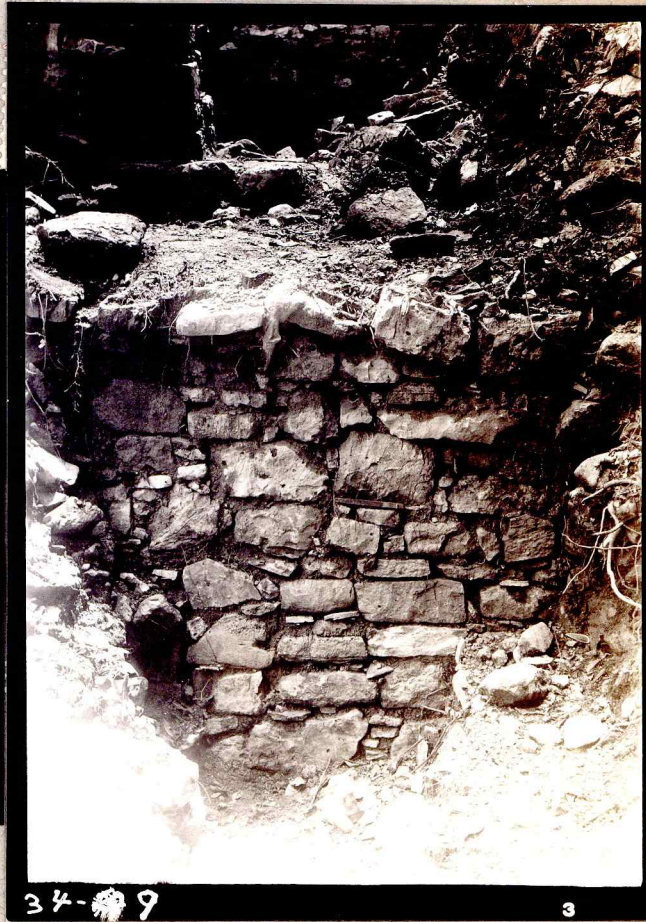
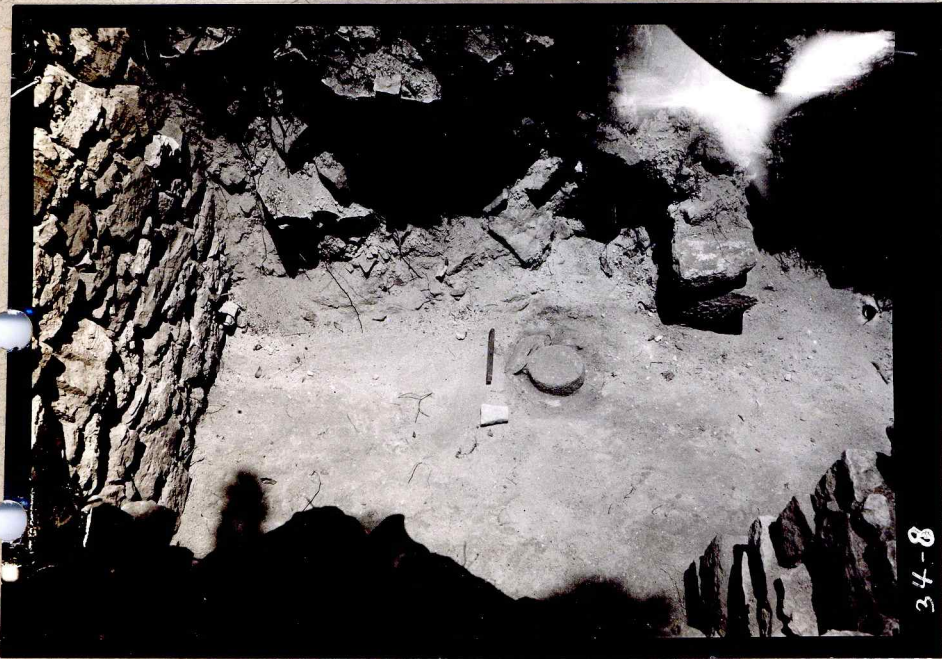
3A-A

3





- 7 F-3 E Inner surface of rear wall of chamber: note use of small slabs, blocks, with chinking and plenty of mortar, which is grayish-yellow; remnants of thick finishing plaster here and there. Wall was pretty rough. Portable altar in right foreground, has not been moved.
- 8 F-3 SE Center trench from above and SE; Note round portable altar; a cut through floor ought to determine finally whether this was set in floor or not. The rough stone leaning against it, plus red color on sides suggests not, though no finished floor could be found under the altar, or immediately around it. The small odd-shaped stone (front of meter-stick) was reported to have been found in about position shown; the altar has not been moved as yet. Doorway at right - front part of left jamb has been torn out, probably by our men.
- 9 F-3 E Masonry of platform, front - see also 34-6



- 10 F-3 N Cut-section through debris in chamber, 50 cms right (SE) of SE jamb of center (and only?) doorway. Jamb appears at left. The large stone on floor to left, and one over-lapping are rough-worked on edges, possibly cap-stones. In general, note slabs and masses of mortar, which is grayish-yellow. Stick extended to 1.40m. Note: Further to the northeast the rear wall stands higher and debris slopes to front (see cross-section drawing in 1934 notes.)
- 11 F-3 Same as above.



34-10

6

- 12 F-3 Cap-stones from center trench. That at right represented by one end only. The holes are probably not artificial.
- 13 F-4 W General view of mound from right end, at court level near juncture of F-2 with court platform; F-3 out of picture on immediate left of camera. The white stones on slope are from excavation but not deep enough to distort shape of mound much. Boy at right is on the plaza level, to which the front of the mound debris reaches. Boy at left on court level, which is higher.



14 F-4 S From tower at front; the wall in foreground retains the narrow esplanade; the next is the plinth of the building; beyond the portable stone altar on the floor; behind this the inner face of the rear wall. Picture is through central front doorway, the jambs of which are badly fallen.

15 F-4 NE From rear, to left, after 1934 excavations; note stump of rear wall, fallen out; portable altar (unmoved); right jamb of front central doorway joining right partition buttress; doorway to right room; right jamb of right front doorway and left jamb of ~~1/2~~ right end doorway.



16 F-4 NW Similar view from rear, but to right; shows left partition buttress (broken down toward rear) with debris-filled doorway to left room in front of it; left jamb of central front doorway; left jamb of right front doorway (the rear half fallen so that the partition appears to stand free at the front, which it does not as appears clearly from other side in #34-15); boy stands in front of right end doorway, facing it.



- 17 F-4 W Similar view from tower, from right of building, looking over and through right end doorway.
- 18 Same view as 34-17.
- 19 F-4 NE D tail view of center room, right partition buttress and portable stone altar. Note white plaster floor, turning up to buttress; meter stick extended to 1.40. The debris on the buttress represents undisturbed original surface.



9

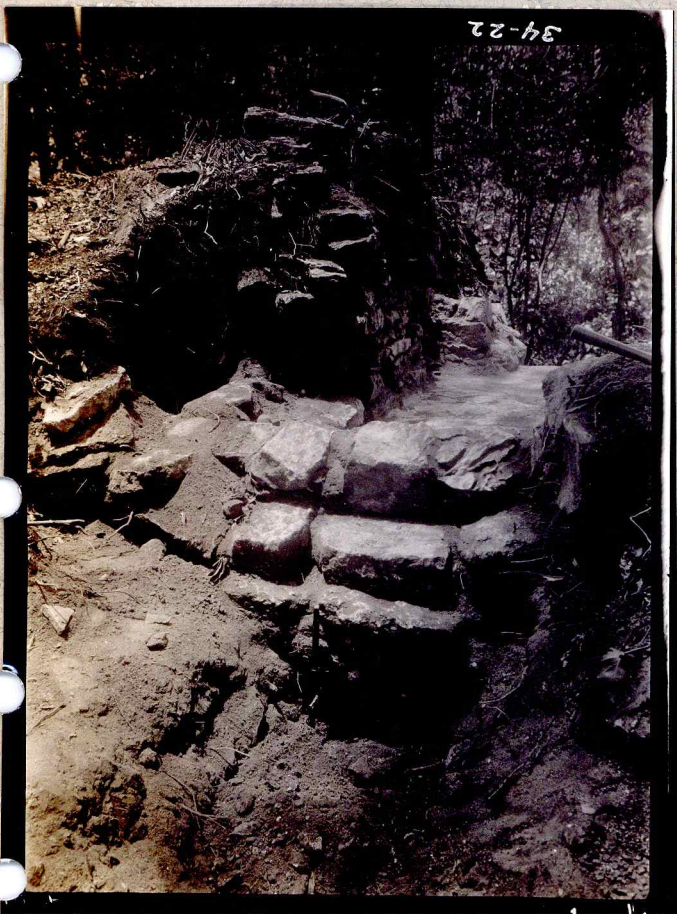
34-17



34-17

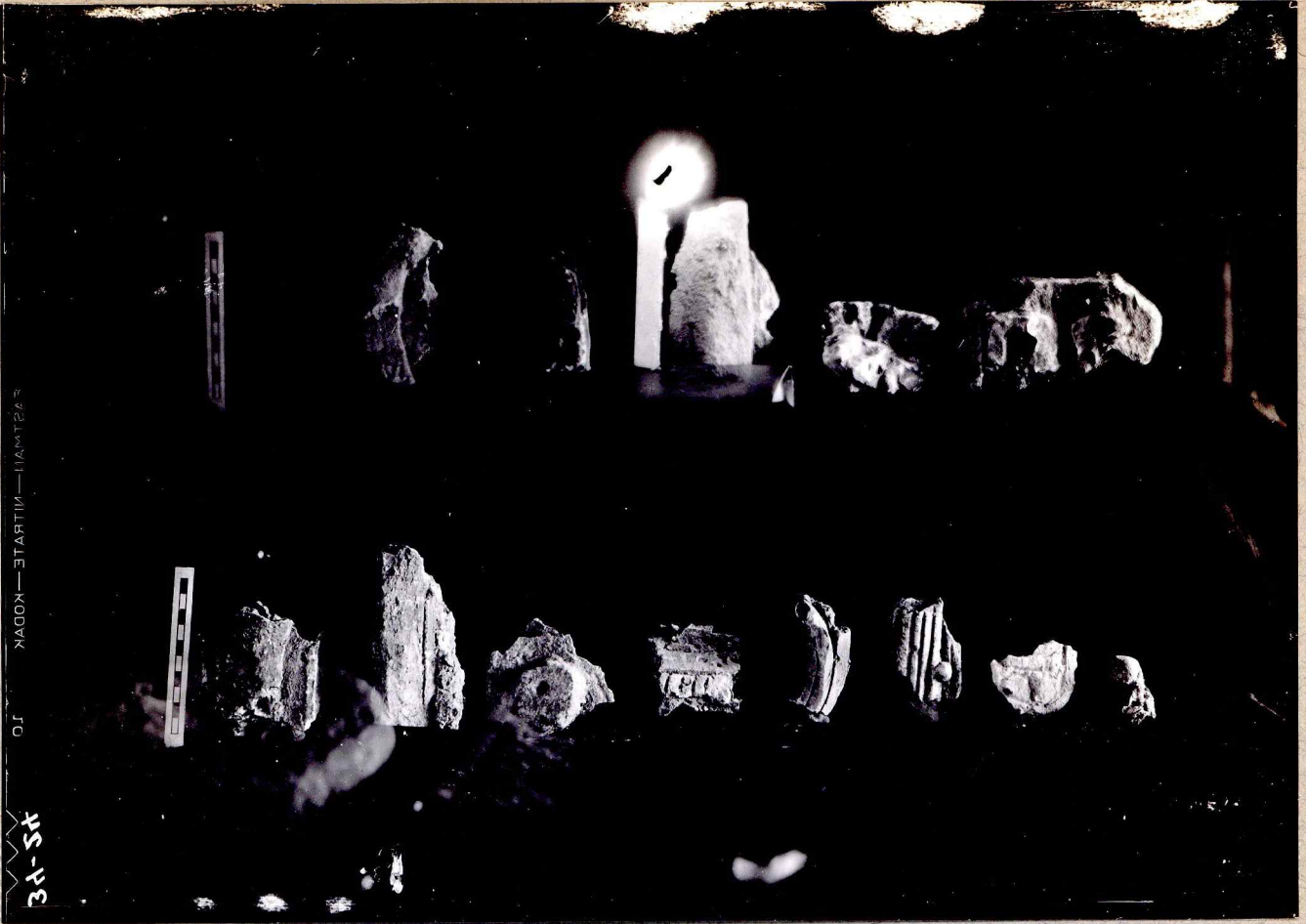
10

- 20 F-4 E Cut section through debris (line A-B in drawing), 50 cm right of center, from front (left) to ~~six~~ altar; thence to rear cut back. Stick extended to 1.20m. At extreme left, section projects toward camera to show fallen wall stones in doorway.
- 21 F-4 Same view as 34-20
- 22 F-4 N Rear wall from outside - lowest course only, plus section of plinth revealed by shallow trench; note left partition buttress beyond, torn out at the rear (near end) except the lowest courses, which run back to the inner face of rear wall.
- 23 F-4 Cap stones from excavation.



24 F-4 Stucco fragments from this building (i.e. in debris);  
all are Cat. No. NE-3-2. Scale is centimeters.

25 F-5 NE A non-vaulted mound, with small hillocks of debris,  
similar to P-6, and Strgs. 5 and 15 at Yaxchilan.  
Camera is on plaza level, the top of mound about  
on eye level; do not be confused by the top of  
Str. F-2 behind the boy on left. That boy stands on  
the forwayd hillock, the boy on right in the little  
valley between this and the next, on the general level  
of the surface.



- 26 J-29 NW View from left, double exposure, same as 34-27 except that it shows sky-line.
- 27 J-29 NW From edge of cliff which carries great stairway (Str. J-28), camera about on level of ~~max~~ eye of person standing on promenade in front of temple, but slightly farther front. Note at right the angle formed by left end wall; to front of this the ruined left corner, the source of all but one of the recovered fragments of Miscl. Sculptured Stone No.13;



- 28 J-29 NW Similar to above, but a little lower and farther front, Besides above features shows part of left and side of middle pier. The boy near center is on terrace level below fronting promenade, behind a line of stones which we put there; the boy at left is on surface of top of pyramid proper. The center boy stands in our trench; behind him and to his left a small hump of debris thrown on the slope by us. Otherwise picture shows untouched debris surface back to the center axis marked by the two range poles. The range pole at extreme right marks rear of building on center axis. The level rod (behind trunk) has base on chamber floor at edge of rear sill or bench, just beyond center axis.
- 29 J-29 NE Front elevation after 1934 excavations, from tower on pyramid top. Note base of wall of "promenade"; plinth, doorways, niche and altar; heavy slab rear wall.

34-28



34-29



30 J-29

Same view as 34-29.



- 31 J-29 N Similar to 34-29&30, but to left a little. Note specialized long blocks in left pier and left jamb of left doorway.
- 32 J-29 NW The chamber from tower just beyond left end, shows original debris in position at right end, with cut section; rear sill or bench; left face of piers.

34-31

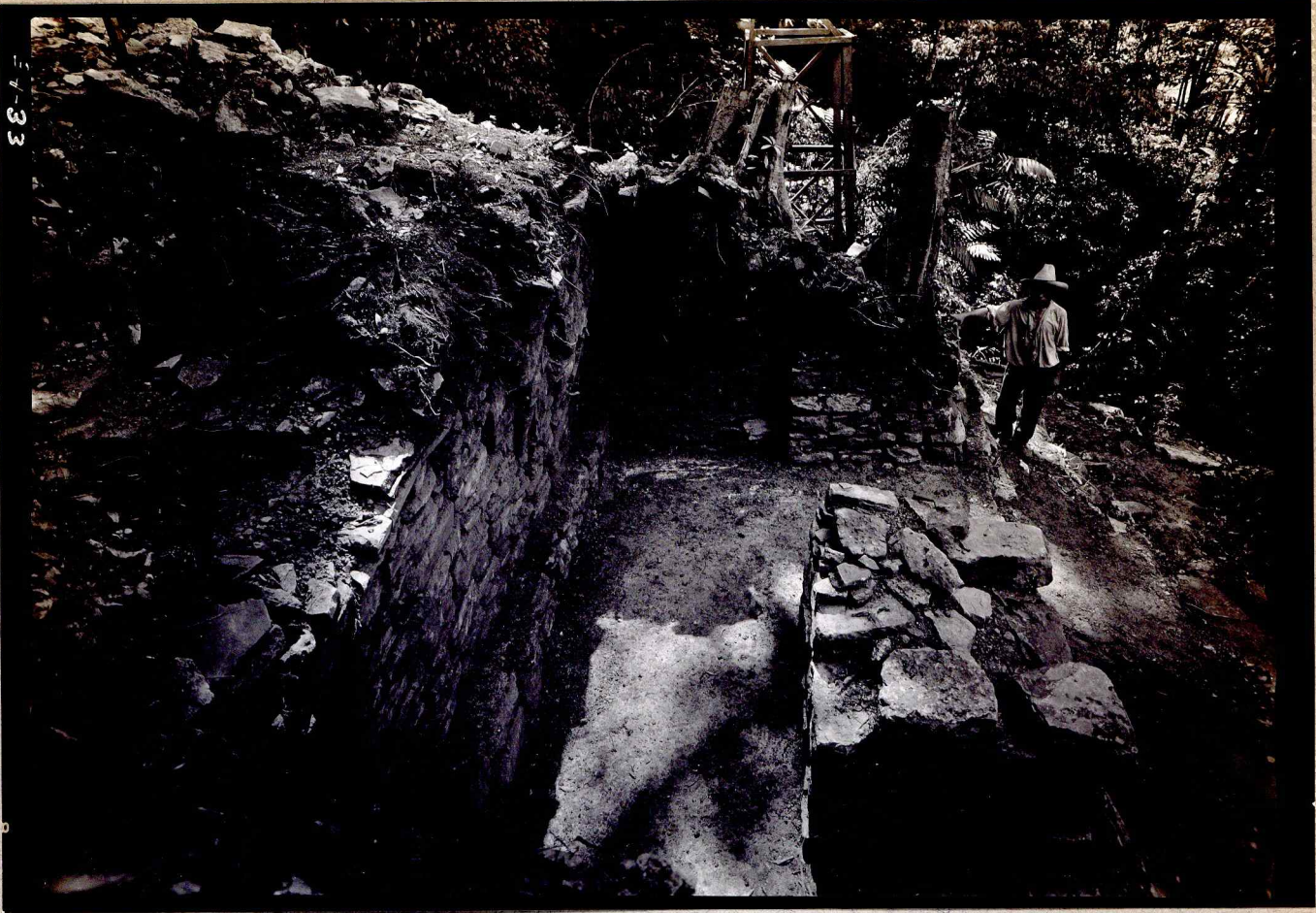


34-32



7

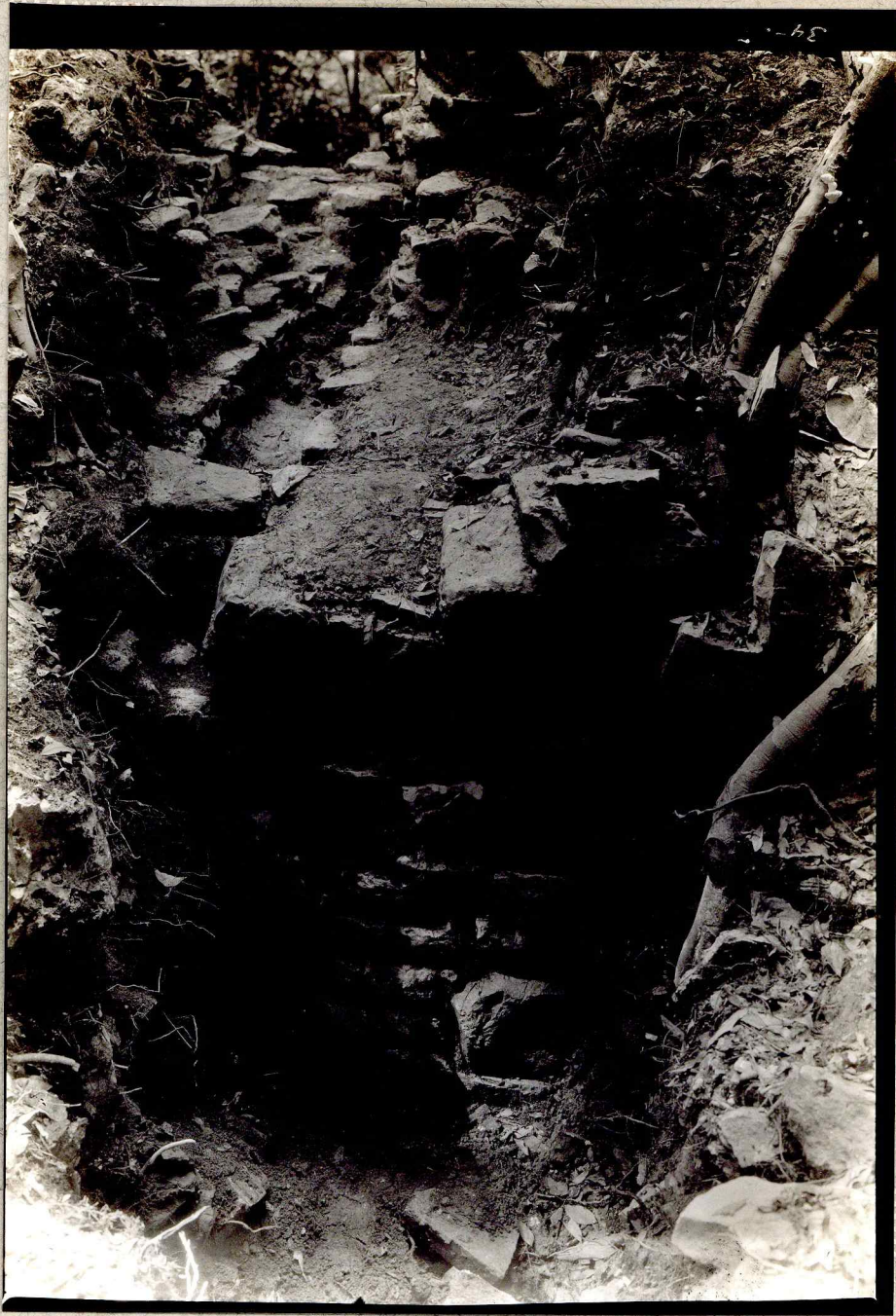
- 33 J-29 SE Excavated area from undisturbed debris over right (SEly) end; Note left end wall built over sill or bench; at left, slab construction shows slightly in area behind rear half-vault, now fallen.
- 34 J-29 SW From debris over rear half; shows left pier and left left jamb of right pier.



- 35 J-29 SE And from almost above (on tower); Looking down on flue, from which all but one covering slab have been removed; Note at left that flue runs outside through rear wall; At right slab construction has been removed to show left side of originally wider niche. The flue disappears at right under slab construction which has not been removed.
- ~~34~~ ~~J-29~~ ~~SE~~
- 36 J-29 SW Mound from slope at rear; in foreground, pit to show rear wall, meter stick at 22 cm; despite apparent slight batter wall looks like a free-standing one of heavy slabs, one block showing; latter probably part of general movement forward - it is very irregular. To immediate left of pit see opening to the flue, and the flue running forward under the single cap slab left at the rear end; Note the slab construction at sides of flue - this crossed over it. This construction extended from front to about 1.50 m from rear wall. At left see original mound surface, thoroughly cleaned of bush only - some slabs, blocks, small irregular stones; Left foreground, large boulders which have rolled down hill behind and stopped against the building after it had become a ruin - did not find these at lower levels in the pit. See 34-37 for close up of wall and flue).



37 J-29 SW Close up showing constructions mentioned above in der  
34-36. Meter stick @ 22 cm.



38 J-29 SW From rear, to left; left end of stick, extended to  
82 cm, points to approximate location of last fragment  
of Misl. Sculptured Stone No.13. Note that slab  
construction is doubtful from here back.



34-8  
MILLSVILLE - ROUVAN JO

39 J-29 S From tower, right to center of rear portion of building; shows corner of left pier; in upper left background, the left front corner of pyramid proper; range poles are on approx. center axis.



40 J-29 SE From same tower position, looking more to left; shows  
left pier and left end plan - poor negative (camera  
moved?)

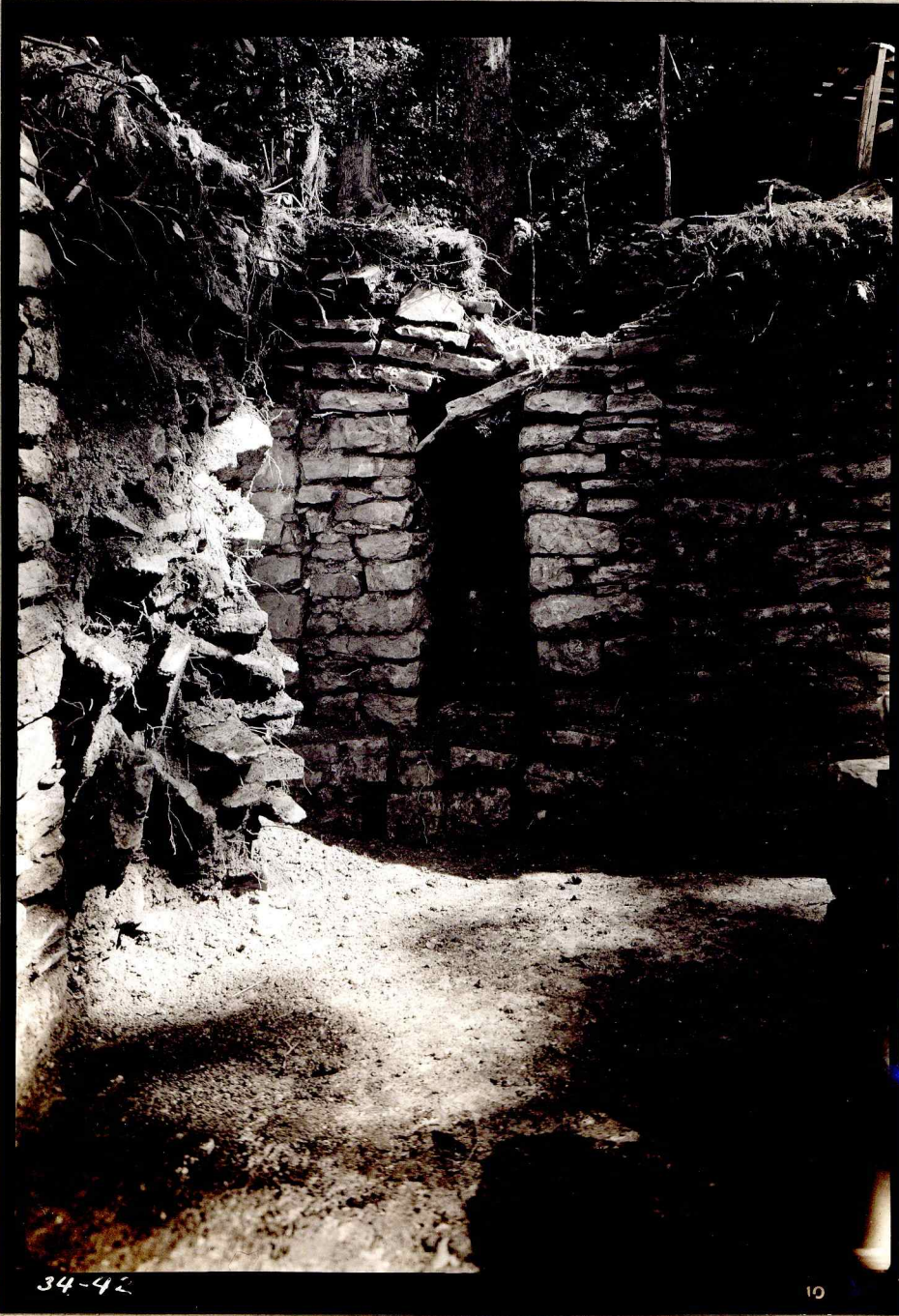


- 41 J-29 NW Retaining wall at left end of basal front terrace; small slabs, slab-blocks, and occasional blocks; no remaining signs of mortar.
- 42 J-29 NE Niche and column-altar in position, close-up; cut section of debris at left; meter stick @22 cm rests against altar; note that niche has been secondarily narrowed.



34-41

12



34-42

13

43 J-29 NW Niche and column altar, close-up; see 34-42; and  
1934 sketch-notes for details of broken slabs  
above, taken from in front of left pier.

44 Same, over-exposed.

