

Field Photo Catalogue
1935: L.S. - str. P. 7 (odd photos)
Nos. 395-461. EC
301-477

LEA

1935 - L.S. -
str. P. 7 (odd
photos).
(no no) d.

1936 - Cresson
Nos 395-461
d.

1937 - Cresson
Nos 301-477
(480)

?

36-
395/461
Cresson

37-
301/477
Cresson



Frank

2nd half of 1936 and

all of 1937 *beginning on p. 52*



PIONEERS SINCE 1851

MINATURE ACCOUNT BOOK

No. S 750

Journal
Record
Ledger

Ledger, S. E.
Cash Book
Day Book

S-750	Size 7 x 4 $\frac{1}{2}$	180 Pages
S-751	Size 7 $\frac{1}{4}$ x 4 $\frac{1}{2}$	180 Pages
S-752	Size 9 x 5 $\frac{1}{2}$	180 Pages

A PRODUCT OF WILSON-JONES CO.
Made in U. S. A.
N. Y.

?

36
395/461
Cresson

37-
301/480
Cresson

June 11. 12 22 8" 8" 8.30 L.C. P7 front

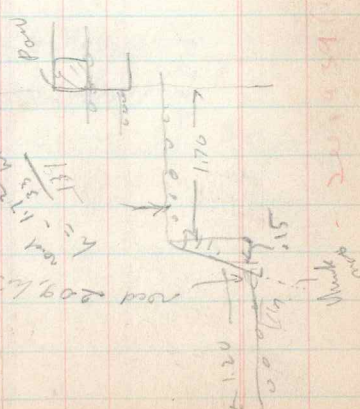
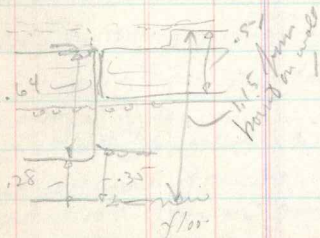
Mud line
237

Old No.
35-237

11 22 2" P. 1.0 P. 2.5. P7.

Left hand: 00 left, corner of burned platform, with
it's plastered floor in hand & running in and
under at side; 00 right, secondary addition
at higher level. Ruler on floor ~~of this~~
instead of this, which has been cut but
reappears at left against platform.

Scan Outlier.



2.09
1.16
1.13
1.09

36-
395/461
Cresson

37-
301/480
Cresson

Jan 18. [7] - upper ^{blacked} ~~upper~~ in glass
low - lens blank

[5] upper - upper nt.
blacked upper

6

7

⑧ 22" 2" L.C. 3.0v W 54
9 started by huddling out screen.

J-9

New wall sunny


J-18

End of new wall. Not plentiful
discrepancy.

C-4.

From debris, 610s. do - 1/20 piece + part wall. Part debris.

J-4

From debris, 610 side, showing at side of niche.
Not follow many of the wall or outside to
see: Heavy stucco members of corn near floor
in corner. (upper lean on one), and do lead by
wall. The  shaped stucco piece was in the
big gap between corner of niche. Floor + dirt is smoke
colored at bottom of our cut near wall, here.

Into the small tiled wall into above. 80 - then
disappear and 51 30 blocks. (610 part of wall)
Central row. 13. 7 blocks at corner - chimney filling
at piece.

36
395/461
Cresson

37
301/480
Cresson

18

19

36
395/461
cresson

37
301/480
cresson

check 1936
 date neg. serial no. film no. stop exposure Rev. time date kind of light structure direction from

O.K. 6/3 395 7 22 30" 15" 4:45 Sun 0-13 N.W.

O.K. 6/4 396 [4] 22 16" 8" 7:15 Sun 0-13 W.

O.K. 6/4 397 [5] 22 16" 8" 7:45 Sun 0-13 S.W.

Description + Remarks.

Group of bones at base of rear terrace of rt. wing. Both meter sticks on floor. Pick against terrace of central part of building.

Interior of right wing from rt. front corner. Boy with rod at base of rear of pier. Small pick on upper floor at rear. Whisk on plinth at end of "wall X". Frowel on sill. Small meter stick on floor.

Same from the front. Boy with rod stands in inset at left rear corner of pier. Other things the same except whisk moved to front at about floor level. Two stones of a step (?) in center of front room.

37-

301/480

O.K. 6/4 398 [6] 22 8" 4" 8:30 Sun 0-13 S.

O.K. 6/4 399 8 22 4" 2" 9:30 L.C. 0-13 S.E.
under-developed

O.K. 6/4 400 9 22 4" 1" 10:30 Sun 0-13 N.
under-developed

Entire right wing of building from the front ^{center} front terrace + steps in foreground. Whisk on top of panel. Boy with rod standing on level of doorway.

Looking along front terrace + down on secondary stairway. Whisk on panel. Small pick at rt. front corner of terrace. Boy at broken end wall of addition to stairway which faces away from camera.

Looking down on the wall junction in the rt. wing, from on rear wall of wing. Brush on plinth 1, whisk on plinth 2, knife on plinth 3 or plinth of wall X. Trowel on floor running under battered wall. Meter stick on floor at base of plinth 3 wall.

37-
301/480
KSS

O.K. 6/5 401 10 22 4" 2" 2:30 L.C. R-5 W.

O.K. 6/5 402 11 22 4" 2" 3:20 L.C. R-5 W.

O.K. 6/9 403 12 22 16" 4" 2:45 Sun R-16 N.
under-developed

Right rear corner of substructure + house wall above it. Small pick at rear, trowel at side, meter stick on terrace floor level in cut-out corner. Whisk against side of house wall with probable corner above meter stick + embotido to left.

Niche in substructure wall at right side of building. Meter stick on terrace floor. Whisk against house wall. Trowel against back wall of niche ^{but above its floor}. Small pick at base of substructure wall to front of niche. Niche had floor at same level as floor outside, to rear of niche.

Left rear corner of substructure. Small pick at probable rear corner. Meter stick at corner where inset corner

37-

301/480
C-100

6/9 404 1 22 30" 8" 3:15 cl. R-16 S.E.

over-exposed
over-developed

6/10 405 2 22 60" (?) - 4:20 cl. 0-4 S.E.

over-exposed
over-developed

O.K. 6/16 406 3 22 60" 15" 10:45 cl. S-19 W.

Begins in side wall. Whisk against secondary wall, which half filled up inset of corner.

Substructure at left front of building, with "panel" + end wall of steps on picture's left. Meter stick on floor level. Small pick in inset "panel". Whisk at front of left jamb of left end doorway. Part of pier at upper left.

Doorway, floor of sunken passageway, + side wall of passage inside left jamb. Meter stick on floor of passage, whisk on floor of room. Other whisk on plinth + other meter stick at base of plinth. Both meter sticks at .35.

Doorway, + passageway outside doorway. Meter stick at base of

37-

301/480
CXC

O.K. 6/16 407 4 22 15" 8" 11:15 Sun S-18 S.W.

O.K. 6/16 408 5 22 15" 8" 11:45 Sun S-17 N.W.

S.U. 6/16 409 6 22 15" 8" 2:30 Sun S-4 S.E.

passage wall. Small pick against possible rough wall in doorway. Whisk against house wall.

Wall + substructure at left end of S-18, with right front corner of S-17 on right. Meter stick at base of S-17 substructure + open to .35. Whisk on plinth of S-18. Left front corner of S-18 covered by tree + root.

Wall + substructure at right end of building, with right front corner in foreground. End wall of front steps at right. Meter stick at base of wall, open to .35. Whisk on plinth. Very finely cut blocks, those at corner being battered.

Doorway + passageway outside. Meter stick against

37-
301/480
CXXV

OK 6/17 410 7 22 4" 4" 10:30 L.C. R-1 S.W.

OK 6/17 411 8 22 30" 15" 11:00 cl. R-10 W.

house wall, on top of passage wall, + open to 50. Whisk on floor level just inside building front corner of passage in foreground.

Small slabs in debris just above floor at right end of building. Meter stick on floor material + open to 50. Knife on surface of debris. Whisk lies on excavated slabs a little larger. Brush is on thick plaster found outside building.

Left front corner of substructure showing rounded corner with upper part (at left) falling. Meter stick at base of wall on side. Whisk, at base of wall at front at level of front terrace.

37-
301/480
CXC

O.K. 6/17 412 9 22 8" 8" 11:15 rain R-10 W.

O.K. 6/18 413 10 22 4" 4" 10:45 cl. R-9 W.

6/18 414 11 22 8" 8" 12:00 cl. R-13 S.

under - exposed

O.K. 6/19 415 12 22 4" 4" 3:00 L.C. 0-12

Substructure wall at front to right of center, also house wall. Whisk against right jamb of central doorway. Small pick + meter stick at bottom of substructure wall.

Substructure wall at front of building, right pier + part of right end wall. Meter stick at base of substructure wall + open to .50. Brush on corner of pier. Whisk against end wall.

Doorway + rt. side of double passage. Meter on floor, open .50. Whisk against house wall.

Substructure on right side of building. (on right), at left is secondary terrace wall, broken off at shovel.

37-
301/480
CRES

6/22 416 [5] 32 5" 8" 8:30 0-13

417 [6] " 1/2" 9:00 0-13

418 [7] 44 8" 10:00 Stucco

6/22 419 1 Misc. Objects

420 2 0-13

421 3 Mud Ob.

422 4 Mud Ob.

423 5 0-13

6/23 424 6 1/2" 0-13

425 7 1" 0-13

M.S.S. 16 in shade

M.S.S. 16 in sun

Stucco fragments

Small stone objects

objects from cache at 0-13

Figurine fragments + sherd

Double L stones + bones.

Bones from behind 0-13.

Split in sill behind rear pier of front room, rt. side of building, being rt. front corner of platform on which gray floor rests, + continuation of plinth 2".

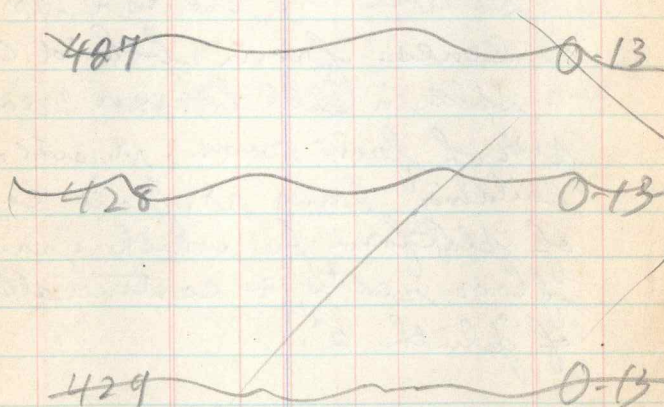
Front of plinth 1 + wall above it after removal of transverse wall above plinth 2. meter stick stands on gray floor.

37-
301/480
C.F.S.

6/23/4268

2"

0-13



Rear of wall X, after removal of transverse wall above plinth 2. Showing how it stops in fairly straight line. Meter sticks on gray floor. Trowel points to line of face of transverse wall above top of plinth 2. Note wall X riding over gray floor.

over h



37-
301/480
CRES

430

013

Notes on Jackson - Jan

431

P.7

432

P.7

~~433~~

~~Notes on~~

~~Records of People~~

434

5

6

7

8

9

440

1

2

443

People.

37-
301/480
cc66

6/- 444

445

446

447

448

449

Building house for Don Victor.
Main framework, from rear.
Poles must be cut after full moon.

Same. Detail of right front
corner from above, showing
curve + extension to front
to carry roof over "porch."

Same. Roof poles in place,
from rear.

Same. Framework for roof
finished. Note rounded corners.
From front.

Same. Guano leaf bling
put on roof. Small section
of wall started at rear.
From front.

Same. From front. House
completed. Roof finished first
then walls finished.

37-
301/480
CRES

7/26 450

7/26 451

7/26 452

7/26 453

7/26 454

7/26 455

Sweat house 1 at Milpa alta.
General view from right end.
Same from closer + lower
down, showing under wooden
roof. In all "temazcal" pic-
tures meter stick is open
to .42.

Sweat house 1 at Milpa alta.
Doorway of steam room,
showing heavy jamb blocks.
Beginning of fire chamber at
left.

Sweat house 2 at Milpa alta.
Fire chamber on left with
doorway plastered up. Note
surface drain in foreground.

Sweat house 2 at Milpa alta.
From its right side + above.
Fire chamber on right.

Sweat house 3 at Milpa alta.

37-
301/480
CX

7/26 456

7/27 457

4/27 458

Fire chamber on right with doorway open. A low fire is burning in the fire chamber, the smoke of which comes out the door of the steam room. On the roof are potatoes, used to cover the floor during a bath.

Sweat house 1 at Santa Ana. Fire chamber on left. Water in front of door is due to a recent rain.

Sweat house 1 at San Francisco. Note passage with wall only on one side outside of doorway. Soap box over door. Ventilator on each side of front wall, plugged with coarse grass.

Sweat house 1 at San

37-

301/480

C. 186

4/27 459

7/28 460

7/28 461

Francisco. Left side of front from above. Fire chamber at upper right.

Sweat house 2 at San Francisco. From its left end. Front door at left. Fire chamber in foreground with bulging walled up doorway. Construction at right background is not a part of sweat house.

Sweat house 1 at Tepoztlán. From front. Fire chamber on right. "Soap boxes" on each side of doorway (not ventilators)

Sweat house 1 at Tepoztlán. From its left end. Fire chamber in foreground with its doorway open. Outside fire

37-
301/480
C26

place in corner between
fire chamber + steam room.
Note end of ridge pole of
steam room.

In all sweat house picture
meter stick is open to .42.

37-

301/480
CFC

50

51

1937

37-
301/480
CRES

check 52

1937
Dateserial
no.film
no.

stop

exposure

Base

time
daykind
light

structure

direction
from

OK 4/1 301 1 22 4" 4" 11:30 Sun J-11 N.W.

OK 4/2 302 2 22 2" 2" 3:20 Sun J-11 N.W.

OK 4/3 303 3 22 4" 2" 10:00 Sun J-11 N.W.

53

Description + Remarks

Section of debris across Room 3.
room. On right side of doorway 6.
Meter stick open to .52 +
stands about .20 above floor.

(of Room 3)

Part of throne with debris still
in front. Large slab, probably
capstone, fallen on bench part
of throne at front. Meter stick
stands on floor + open to .35.
Whisk stands on bench + leans
against back-screen. Wire brush
on top of back-screen. Knife
points to in-sloping side of
back-screen, which has
plaster rounding its edge.

Front of front leg in foreground?

(of Room 3)

Throne half uncovered + half
still covered by debris. Meter
stick on floor + open to .52.

O.K. 4/5 304 4 22 2" 2" 4:00 Sun J-11 S.W.

O.K. 4/5 305 5 22 2" 2" 4:00 Sun J-11 E.

O.K. 4/8 306 6 22 2" 2" 3:00 Sun J-11 N.

O.K. 4/8 307 7 22 4" 4" 4:00 Sun J-12 W.

Whisk on seat. Small pick against corner of doorway on right. Note very large slab on end in center. Front leg in foreground.

Left side of central pier of Room 5 ^{taken} slightly from front. Large stump on top. Note cut-out rear corner.

Rear + right side of same pier. Note cut out rear corners.

(no. 20)

Doorway on left side of throne in Room 3, filled with debris. Meter sticks on floor + open to .35.

Section of debris with bowl in situ on floor

O.K. 4/9 308 8 22 4" 4" 8:15 Sun J-12 S.

O.K. 4/10 309 9 22 8" 8" 11:30 Cl. J-11 W.

O.K. 4/17 310 10 22 1/25 1/25 11:30 Sun J-12 S.

O.K. 4/19 311 11 22 1" 1" 2:45 Sun Court 1 W.

at left end of bench in room space 2. Left front corner of bench on left.

Section of debris across bench, in Room space 2. Meter stick on floor + open to .35.

Section of debris in doorway 19, taken from room 4. Meter stick on floor + open to .52. Large stone directly on floor.

Bowl in position on floor, at left front corner of bench in room space 2. Note what may be two pieces of copal.

Fill walls below floor of Court 1 in front of J-7. Small

4/19 312 12 22 2" 2" 3:45 Sun J-11 E.
Blank

a.k. 4/22 313 1 22 4" 4" 3:45 Sun J-12 N.E.

pick stands on Court 1 floor + against lowest step of stairway to J-7. Meter stick open to .52 + against fill wall perpendicular to fill wall below small pick. At left is slope of terrace wall below J-7-sub. temple.

Doorway 24, seen from room 2. Filled with debris. Lintel broken + falling. Spring of vault ^{of room} may be seen above lintel. Meter stick on floor + open to .52.

Room space 16, cleared to floor level, showing many fallen wall stones, lying on floor or broken thru it. Floor surface plaster broken up in center of room but preserved

O.K. 4/25 314 2 11 $\frac{1}{25}$ $\frac{1}{25}$ 3:00 Sun Camp.

O.K. 4/25 315 3 8 $\frac{1}{25}$ $\frac{1}{25}$ 3:30 Sun Camp.

O.K. 4/26 316 4 22 2" 2" 8:30 L.C. J-9 S.E.

O.K. 4/26 317 5 22 2" 2" 11:30 L.C. J-11 E.

O.K. 4/26 318 6 22 2" 2" 3:30 Sun J-11 N.W.

along medial wall. Implements stand on floor plaster or at floor level. End of bench at left; short secondary wall at right.

Main house to Badega.

Don Victor's, Men's Kitchen, etc.

Very large slab in debris of N.E. end room. Rear wall of room on left. Side of doorway at right. Meter stick open to .52 & stands about .20 above floor.

Same as 312.

Thrown of room 3 from front. Large slab (no. 7 in notes) in position as found, standing on floor + leaning against bench, with bottom toward

OK 4/26 319 7 22 2" 2" 3:45 Sun J-11 S.W.

OK 4/27 320 8 22 2" 2" 3:30 L.C. J-9 E.

OK 4/28 321 9 22 1" 1" 8:30 L.C. J-9 S.

camera. Small stone with well-worked edge (no. 20 of notes) also in position as found, at back of seat, just to left of large slab. Top piece of right leg as found lying on floor.

Thrown of Room 3 from its left side, showing same features as previous picture. Same stones in situ.

Doorway 19 seen from Room 3, showing it filled with debris on this side. Lintel in falling position.

Left front corner of Room 3, and left side of doorway 4. Note hieroglyphs on stone above trowel. Side of filled-up doorway 5 to left of which. Meter stick on floor; open to .35.

O.K. 4/28 322 10 22 2" 2" 9:00 Sun J-9 N.

O.K. 4/28 323 11 22 1" 1" 10:00 Sun J-9 W.

O.K. 4/28 324 12 22 1/2" 1/2" 2:00 Sun J-12 S.E.

O.K. 4/29 325 1 22 1" 1" 8:45 L.C. J-11 S.

Underdeveloped

O.K. 4/29 326 2 22 1" 1" 9:00 L.C. J-11 W.

Underdeveloped

Doorway 18 seen from Room 3, showing it filled with debris on this side. Probably one of lintel stones near top.

Right front corner of room 3, with whisk against right side of doorway 4. Meter stick on floor + open to .52.

Small bowl in situ on floor in doorway 12. Trowel on corner of bench. Whisk against pier 12-13. Secondary wall filling up doorway on right.

Left front corner of Room 3, with small pick against left side of doorway 6.

Right front corner of Room 3, with small pick against right side of doorway 6.

O.K. 4/29 327 3 22 1" 1" 9:20 L.C. J-II N.

Underdeveloped

O.K. 4/29 328 4 22 1" 1" 9:40 L.C. J-II E.

Underdeveloped

O.K. 4/29 329 5 22 1" 1" 10:00 L.C. J-II N.E.

Underdeveloped

O.K. 4/29 330 6 22 1" 10:30 Sun J-II S.W.

Underdeveloped

O.K. 4/29 331 7 22 1" 1" 11:00 Sun J-II S.W.

Underdeveloped

Doorway 20, seen from Room 3.
Compare with 306. Secondary wall
fills up half of doorway. Travel
on top may be on sill of a
window. Part of throne at left.

Doorway 22, seen from Room 3.

Rear wall of Room 3, with
filled-up Doorway 21 in the center.

Left side wall of Room 2.
Looking thru Doorway 20 to
throne in Room 3. Left side of
Doorway 5 on right.

Right side wall of Room 4,
looking thru doorway 22 into
Room 3. Side of Doorway 21
on right.

O.K. 4/29 332 8 22 1" 1" 11:20 Sun J-11 S.W.

Underdeveloped

O.K. 4/29 333 9 22 1" 1" 2:00 Sun J-11 N.E.

Underdeveloped

O.K. 4/29 334 10 22 2" 2" 2:20 Sun J-11 S.E.

Underdeveloped

O.K. 4/29 335 11 22 1" 1" 2:40 Sun J-11 E.

O.K. 4/29 336 12 22 2" 2" 3:00 Sun J-11 N.E.

Secondary wall at right end of Room 5. Whisk against pier at right side of Doorway 8.

Secondary wall at right side of Room 2. Whisk against pier at right side of Doorway 5. Doorway 24 on right.

Rear wall of Room 2. Boy in Doorway 19. Whisk at spring of vault.

Doorway 7 and front wall of Room 4 from Doorway 19. Whisk against corner of bench. "Inset" of terrace wall just outside of door.

Bench in Room 4, + secondary wall at left side of room. at right is pier on left side

O.K. 4/29 337 1 22 2" 2" 3:20 Sun J-11 N.E.

O.K. 4/29 338 2 22 2" 2" 3:45 Sun J-11 S.

4/30 339 1 4.5 1" 1" 10:00 Sun J-11 N.

overexposed

RETAKE ✓

SEE 355

of doorway 7. Doorway 18 on left.

Secondary wall at left end of Room 5. On left is Doorway 25, partly filled up, with probable window to Room 6. End of back screen of throne of Room 6 may be seen beyond. At right is pier on left side of Doorway 9.

Central pier of Room 5, from medial wall, after removal of large stump. Left side of Doorway 9 on left. Terrace wall on other side of "alley."

Bench in Room 4 from outside of building.

O.K. 4/30 340 [2] 22 1" $\frac{1}{2}$ " 10:30 Sun J-11 W.

O.K. 4/30 341 [3] 22 1" 1" 11:00 Sun J-11 N.W.

O.K. 4/30 342 [4] 22 2" 2" 11:30 Sun J-11 S.W.

O.K. 4/30 343 [5] 22 8" 8" 3:15 Sun J-11 S.

O.K. 4/30 344 3 22 4" 4" 3:45 Sun J-11 E.

Looking down into Room 4
from up on terrace below J-22.

Rear wall of Room 5 (medial
wall of building) from terrace
below J-22. Which beside capstone
with lines of plaster, from this room.

Rear wall of Room 7, with
filled-up doorway 13 in center.
Niche near top of ~~meter~~ stick rod.
Meter stick lies in space which
was probably another niche.

Left side wall of Room 7,
with boy standing in doorway 14.
Which at back of niche.

Front wall at right side of Room
7. Meter stick against right
side of doorway 11.

OK 5/1 345 4 22 2" 2" 9:15 L.C. J-12 S.W.

O.K. 5/1 346 5 22 1/2" 1/2" 9:45 Sun J-12 N.E.

underdeveloped

O.K. 5/1 347 [6] 22 1/2" 1/2" 10:15 Sun J-12 S.E.

5/1 348 [7] 4.5 1" 1" 10:45 Sun J-12 N.W.

overexposed

O.K. 5/1 349 [8] 22 1" 1" 11:00 Sun J-12 N.W.

Sherds on floor in front of bench in S.E. end room. Sherds have been white-washed. Brush lies on floor — floor plaster just to left of brush. Trowel against bench below top floor level. ^(extremely right) Pieces of skull bones in front of meter stick. Sherds are in all positions — upside down, etc.

Rear wall of Room Space 11. Machete against wall on left. Brush on right is against end of short projecting wall. (Left out) General view of S.E. end of building from outside Doorway 10.

General view of S.E. end of building, from on medial wall. One boy in doorway 10, other next to end of 1-9. Whisk on throne. Same.

O.K. 5/1 350 6 22 1" 1" 11:30 L.C. J-12 S.W.

Underdeveloped

O.K. 5/3 351 7 22 1/2" 1/2" 9:00 Sun J-12 N.E.

O.K. 5/3 352 [9] 22 2" 2" 9:45 Sun J-12 S.

O.K. 5/5 353 [10] 22 4" 4" 8:30 Sun ^{Court 1} S.E.

O.K. 5/6 354 [11] 22 4" 4" 4:00 L.C. J-12 S.E.

Rear wall + left side wall of Room space 9. Whisk at side of Doorway 26.

Same as 346.

Rear wall of Room space 11, ~~Brush at right, but no machete.~~

General view from tower with wide angle lens from outside south corner of building. End room with throne in foreground.

General view with wide angle lens showing excavation below Court 1, in front of J-7. Note wall one or two stones high on Court level. Boy with rod stands at bottom of old terrace wall. Corner of J-6 stairway at left.

Room space 9 from S.E. end room, shows section of debris, pier at

O.K. 5/8 355 12 22 2" 2" 9:00 Sun J-11 N.

O.K. 5/8 356 8 22 1" 1" 3:30 Sun J-12 S.

O.K. 5/8 357 9 22 1" 1" 3:45 Sun J-12 W.

O.K. 5/8 358 10 22 1" 1" 4:00 Sun J-12 W.

left + cut thru medial wall at right. Meter stick on floor + open to .52. Small pick on floor plaster which rides over line of stones of J-12-2nd (see trowel) Whisk on floor 2 running under medial wall.

Same as 339, Bench in Room 4 from outside of building. Plinth + sides of doorway in foreground.

Secondary wall riding over two steps, opp. N.E. end of J-9. Whisk on court floor + against end of wall.

Other side of same wall. Side of doorway 9 at left. Plinth + steps at front of doorway 9. In order of

O.K. 5/10 359 11 22 1" 1" 2:30 Sun J-12 W.

construction — (1) brush on corner of original platform, (2) small pick against addition to original platform + stands on floor running under this addition, (3) trowel on step running down to same floor, (4) which on later step running down to same floor. Meter stick on latest floor level in doorway.

N.W. side of S.E. transverse wall, after removal of end of medial wall. Meter stick in room space, two stones of medial wall still in place just beyond knife. Medial wall continued as far as which which lies on floor 2. Medial wall was built up against transverse wall. Note fill below floor.

O.K. 5/10 360 12 22 2" 2" 3:00 L.C. J-12 S.W.

O.K. 5/10 361 1 22 1" 1" 3:15 Sun J-12 S.

O.K. 5/10 362 2 22 15" 15" 3:30 L.C. J-9 N.E.

O.K. 5/10 363 3 22 4" 2" 3:45 Sun J-9 E.

Bench throne in S.E. end room. Brush stands on latest floor plaster. Meter stick stands on surface of throne + against back screen - open to .42. Small pick stands against wall of building.

Right side of bench in S.E. end room, showing "side screen". Meter stick on floor against transverse wall, open to .42. Brush against side screen wall + on level of top of bench. Small pick against wall of building. Whisk against back screen.

Doorway 18 from Room 3, filled by secondary wall. Floor plaster runs under wall.

Doorway 19 from Room 3, filled by secondary wall. Floor plaster turns up to wall, at

O.K. 5/12 364 4 22 1/2" 1/2" 3:00 Sun J-13 N.E.

O.K. 5/12 365 5 22 1" 1" 3:15 Sun J-13 N.W.

O.K. 5/12 366 6 22 2" 2" 3:30 L.C. J-13 S.W.

O.K. 5/13 367 [1] 22 1" 1" 2:15 Sun J-11 N.E.

O.K. 5/13 368 [2] 22 2" 2" 2:45 Sun J-13 S.E.

right is left side of filled-up
Doorway 5.

Right end wall of Room 2
Which in Doorway 9. ^{left out on right} Right side of
Doorway 4 on left.

Rear wall of Room 2. Which
beyond Doorway 9, at side of
Doorway 3.

Looking down thru Doorway 9 into
Room 2. North corner of Room 1
at left. Which against right front
wall of Room 2 beyond.

Bench in Room 4 from tower
placed in Room 3. Boy in alley-way
outside of building.

Rear wall of Room 1. Top of
pile in foreground. Brush on



O.K. 5/13 369 22 3 2" 2" 3:30 Sun J-13 N.E.

O.K. 5/14 370 22 7 2" 2" 2:00 Sun J-13 E.

O.K. 5/14 371 22 8 1" — 2:15 L.C. J-13 W.

O.K. 5/14 372 22 9 2" 2" 3:10 Sun J-11 N.

O.K. 5/14 373 22 10 2" 2" 3:20 L.C. J-11 W.

O.K. 5/15 374 22 4 2" 2" 9:00 Sun J-11 N.

stones over lintel (?) over filled-up doorway thru medial wall.

Right end wall of Room 1. Whisk in Doorway 1. Shovel in Doorway 7.

Front and left side of Pier 1-2.

Rear + right side of Pier 1-2.

Left front corner of Room 7. Left side of Doorway 11 on right. Excavation continued thru wall at corner. Pile of debris above.

Filled-up Doorway 12 from Room 7. End wall of room on right.

Throne in Room 3 from front from within room. With slab 7' in position + top of right leg in place. Whisk against filled up Doorway.

O.K. 5/15 375 [5] 22 2" 2" 9:45 Sun J-11 N.W.

O.K. 5/15 376 [6] 22 1" 1" 2:00 L.C. J-11 S.W.

5/15 377 11 8 1/25 - 2:30 Sun J-11 S.E.
over exposed?

O.K. 5/17 378 12 22 2" 2" 3:20 L.C. J-12 N.E.

O.K. 5/17 379 1 22 2" 2" 3:45 L.C. J-12 S.W.

O.K. 5/17 380 2 22 4" 4" 4:00 cl. J-12 S.E.

Throne in Room 3, from front, from tower. Anacelis in doorway.

Throne in Room 3, from left side, seen from Room 2.

Throne in Room 3, from rear, from on wall of building.

Rear wall of Room space 12. Short projecting wall at left. Whisk at back of bench on right.

Front (secondary) wall of Room space 12. Left side of bench + rear of Pier 12-13 on left. Whisk against rear of Pier 11-12 on right.

Bench at left side of Room space 12. Whisk against rt. side of Pier 12-13, with secondary outer wall at right. Meter stick secondary wall at back of bench.

O.K. 5/21 381 3 22 4" 4" 3:15 Cl. J-4 W.

O.K. 5/22 382 4 22 2" 2" 11:30 L.C. J-4 W.

Inset corner at right side of building platform. Wall facing to rear of building + wall facing to side of building are tied above trowel but not ~~not~~ below it. Below it wall facing to side runs thru toward front. Meter stick at bottom of both walls, open to .42. Which stands on good plaster floor about .40 above bottoms of walls. No plaster floor under walls but small stones. Small pick stands on corner of inner side wall of building platform, covered by outer one - corner of outer one at extreme right. Inner wall was destroyed above level of pick, which is about the same level as the trowel.

From same position as previous picture after removal

O.K. 5/22 383 5 22 2" 2" 2:00 Sun J-4 S.W.

O.K. 5/22 384 6 22 1" 1" 2:30 L.C. J-4 S.

O.K. 5/22 385 7 22 2" 2" 3:00 L.C. J-4 S.E.

of all but bottom courses of outer side wall, of building platform. Inner side wall, preserved only below pick, joins rear part of building platform, to which it is tied.

Inner side wall of building platform, to front of inset corner to inset on left, with small pick on lowest course of outer side wall.

Building platform, rt. side of building, to front of inset corner. Outer side wall in foreground + below small pick. Meter stick + rod against inner side wall,

Front of building platform, to right of stairway. Stairway wall on rt. Meter stick on corner of inner side wall.

O.K. 5/22 386 8 22 4" 4" 4:00 cl. J-12 S.E.

O.K. 5/22 387 9 22 4" 4" 4:15 cl. J-12 N.W.

O.K. 5/22 388 10 22 8" 8" 4:30 cl. J-12 S.W.

O.K. 5/23 — 11 8 1/10 3:30 comp

O.K. 5/24 389 12 22 1" 1" 2:30 dm J-12

Small pick against outer side wall at its bottom.

Right side wall of Room Space 2. Doorway between it + medial wall filled with debris. Wall was torn out between whisk + pier. Bench at lower right.

Left side wall of Room Space 2. Trowel opposite edge of filled up doorway. Wall torn out between whisk + pier. Bench at lower left.

Bench + rear wall of Room Space 2. Small pick in doorway on its right. Whisk against sec. wall at left. Paris + Frank.

Large stone slab which was probably a back screen for the bench in Room Space 2.

O.K. 5/27 390 1 22 2" 2" 8:30 L.C. J-9 N.E.

O.K. 5/27 391 2 22 1" 1" 10:45 L.C. J-12 N.

O.K. 5/27 392 3 22 1/2" 1/2" 11:45 L.C. J-12 W.

Section of debris across Room 5 just to right (S.W.) of Doorway 16. Vault slabs numerous, large trunk above. Doorway 16 on left.

Right rear corner of room space 18, showing floors as numbered. Trowel against medial wall. Wing of L-shaped bench against medial wall. Whisk against transverse wall. Knife along turn-up to main part of bench. Two meter sticks on stones of J-12-2nd wall on each side of a doorway. Floors 1 and 2 turn up to bench; 3 is under bench + transverse wall + turns up to medial wall; 4 turns up to J-12-2nd wall + runs under medial wall.

Floors in doorway 18 from within room, Whisk where bench

O.K. 5/27 393 4 22 $\frac{1}{5}$ $\frac{1}{5}$ 12:00 Sun J-12 N.E.

O.K. 5/29 394 5 22 1" 1" 11:00 L.C. J-10 N.E.

5/29 395 6 4.5 $\frac{1}{10}$ $\frac{1}{10}$ 3:45 L.C. J-4 S.
underexposed &
out of focus

5/29 396 7 4.5 $\frac{1}{10}$ - 4:00 Sun J-4 S.
underexposed &
out of focus

(on floor)
was. Meter stick in front of
base of leg for bench. Floor
marked 4 may be floor 5.

Same set of floors in doorway 18
from outside building. Further
meter stick beside black leg base.

Wall + niche opposite doorway 3.
Meter stick on floor + open to 42.
Small pick near split in walls.
Sherd used as chink was found
in wall on observers right, with
rim facing wall to left.

Top terrace of pyramid from
front. Whisk on basal ledge
in inset corner.

Second terrace from top of
pyramid. Whisk on basal ledge
of inset corner. Small pick

5/29 397 8 4.5 1/10 - 4:15 Sun J-4 S.
under-ly
out of foc.

5/29 398 9 4.5 1/10 - 4:30 LC J-4 S.
under-ly
out of foc.

O.K. 6/7 399 10 22 2" 2" 11:30 L.C. J-12 S.W.

6/7 400 11 22 1" 1" 11:40 Sun J-12 S.W.
BLANK

6/7 401 12 22 1" 1" 11:50 Sun J-12 S.W.
BLANK.

against side wall of stairway.

Third terrace from top of pyramid. Small pick against side of stairway. Stairway wall does not tie into terrace wall.

Fourth terrace wall from top of pyramid from front.

Medial wall at rear of Room space 5. Walled-up doorway 25 at right.

Med. wall at rear of room space 4. In this J-12 picture + in J-4 pictures above, meter stick is open to .42.

Med. wall at rear of room space 3, showing J-12-2 not medial wall under floor

6/7 402 1 22 2 2 3:00 L.C. J-12 N.
Slightly over
 6/7 403 2 22 2 2 3:15 L.C. J-12 S.
Slightly over
 O.K. 6/7 404 3 22 2 2 3:30 L.C. J-12 S.

O.K. 6/7 405 4 22 4 4 3:45 C.C. J-12 S.E.

O.K. 6/7 406 5 22 2 2 4:00 C.C. J-12 N.

of doorway 24. Secondary transverse wall on left.

Rear + right side of Pier 4-5.

Front + left side of Pier 4-5.

Secondary transverse wall at right of room space 3. Whisk opposite side of walled-up doorway. Wall torn down on left. Side of doorway 24 on right.

Secondary transverse wall at left of room space 17. J-12-2nd medial wall below floor on left.

Short secondary wall at right rear of Room Space 17. and side of doorway 24. Whisk

O.K. 6/7 407 6 22 4" - 4:15 CL J-12 E.

O.K. 6/8 408 7 22 2 2 8:45 Seen J-12 N.

O.K. 6/8 409 8 22 2 2 9:15 Seen J-12 S.

O.K. 6/8 410 9 22 1" 1" 11:15 L.C. J-12 E.

O.K. 6/8 411 10 22 1" 1" 11:30 L.C. J-12 N.

on J-12-2nd wall below floor
in doorway 24.

Rear wall of Room Space 17
+ doorway 24. Secondary
transverse wall on right.

Whisk on J-12-2nd wall just
below floor, which has the
side of a doorway in the
center of doorway 24.

Front + left side of Pier 15-16.

Rear + right side of Pier 15-16.

Rear wall of room space 16 and
short secondary wall at its left
side.

Rear wall of room space 16
and left end of bench of room
space 15. Whisk on top of bench.

O.K. 6/8 412 11 22 1" 1" 2:00 Sun J-12 N.E.

O.K. 6/8 413 12 22 1" 1" 2:30 Sun J-12 N.

O.K. 6/8 414 1 22 1" - 2:45 L.C. J-12 S.W.

O.K. 6/12 415 2 22 1" 10:30 L.C. J-9 N.E.

6/12 416 3 22 1/2" 10:45 Sun J-9 N.W.

Slightly under.

O.K. 6/12 417 4 22 1" 11:00 Sun J-9 S.E.

O.K. 6/12 418 5 22 2" 11:30 L.C. J-9 N.E.

O.K. 6/12 419 6 22 2" 2" 2:15 Sun J-10 N.

Rear wall of room space 15.
and walled-up doorway 25.

Rear + right side of Pier 8-9.
Brush on J-12 - 2nd wall on left.

Medial wall at rear of room
space 8.

Rear wall of Room 3.

Right (S.E.) end wall of Room 3.

Left (N.W.) end wall of Room 3,
consisting mainly of walled-up
doorway 5.

Section of debris thru left side
of doorway 9. Debris is 1.50
above floor.

Front + left side of Pier 2-3.

O.K. 6/12 420 7 22 2 - 2:30 Sun J-10 S.

O.K. 6/12 421 8 22 2 2:45 Sun J-10 S.E.

6/12 422 9 22 4 4 3:00 Cl. J-10 N.E.
slightly over.

O.K. 6/17 423 10 22 1" 1" 11:15 Cl. J-12 S.W.

O.K. 6/17 424 11 22 1" 1" 11:25 Cl. J-12 S.W.

O.K. 6/17 425 12 22 2" 2" 2:20 Sun J-10 E.

Rear + right side of Pier 2-3.
Trowel where stone has been
removed to see floor running
under pier.

Section of debris thru right side
of doorway 2. Left side of
Pier 1-2 on left. Trowel lies on
a piece of concrete with round
pebbles, surface up, .04 thick,
+ .90 above floor.

Front of "Pier" 3-4. Shows
turn in plinth. Nearest meter
stick¹² opposite break in front of
"pier" + along line where plinth
plaster stops.

Same as 400.

Same as 401.

Outside of right front corner
of building showing newer

O.K. 6/17 426 [1] 22 4" 4" 3:30 L.C. J-9 N.E.

O.K. 6/17 427 [2] 22 2" 2" 3:45 L.C. J-9 S.

O.K. 6/17 428 [3] 22 2" 2" 4:00 L.C. J-9 S.W.

O.K. 6/17 429 [4] 22 2 2 4:15 L.C. J-9 N.

end wall covering older end wall. Inner end wall goes to corner of old end doorway. Meter sticks on outer end wall open to .35 + beside a stone which ties between the two walls. Other meter stick on front plinth open to .42. Note that in front the 2 walls are tied above the 2 bottom stones.

Room 5. Wall 4. Doorway 16 on left.

Room 5. Looking along wall 3 to doorway 8.

Room 5. Wall 2. Doorway 8 on left.

Room 5. Looking along wall 1 to doorway 16.

O.K. 6/17 430 [5] 22 2 2 4:30 L.C. J-9 N.W.

O.K. 6/18 431 [6] 22 4" 4 8:30 cl. J-9 S.

O.K. 6/18 432 [7] 22 4 4 8:45 cl. J-9 S.W.

O.K. 6/18 433 [8] 22 4 4 9:00 L.C. J-9 N.

O.K. 6/18 434 [9] 22 2 2 9:15 L.C. J-9 N.E.

O.K. 6/18 435 [10] 22 2 2 9:30 L.C. J-9 E.

Room 5. Looking in through doorway 8 to wall 1. In these Room 5 pictures, standing meter stick is .42, horizontal one is .21.

Room 2. Side of doorway 17 and wall 3. Offset for lintel at top.

Room 2. Wall 2 + walled-up doorway 18.

Room 2. Wall 1 + right side of throne.

Room 2. Front view of throne. (Taken from room 3).

Room 2. Wall 4 + side of doorway 17. Left end of throne on left. In room 2 pictures

O.K. 6/18 436 [11] 22 2 2 9:45 L.C. J-9 E.

O.K. 6/18 437 [12] 22 4 4 10:00 Cl. J-9 E.

O.K. 6/18 (438) [1] 22 4 4 10:20 Cl. J-9. N.E.

O.K. 6/18 439 [2] 22 2 2 11:20 L.C. J-9 N.

O.K. 6/18 440 [3] 22 2 2 11:35 L.C. J-9. N.W.

standing meter stick is .42.
horizontal one is .21 long.

Room 4. Wall 5 + left side
of doorway 6.

Room 4. Walled-up doorway
7. Fied in above 1.49 above
floor. other side of doorway
.07 in front of back screen
of throne.

Room 4. Front view of throne.
(Larger than other throne picture
because taken from within room.
Water in foreground.)

Room 4. Wall 1 + side of
doorway 17. Offset for lintel
at top.

Looking in thru doorways 6 + 17.

O.K. 6/18 441 [4] 22 2 2 11:45 L.C. J-9 S.W.

O.K. 6/18 442 [5] 22 2 - 11:55 L.C. J-9 S.

6/18 443 [6] 22 4ⁿ 4 2:30 L.C. J-9 S.
Under ex.

6/18 444 [7] 22 4 4 2:50 L.C. J-9 W.
slightly under.

6/18 445 [8] 22 8 8 3:10 cl. J-9 S.W.
Under ex.

showing wall 2 of Room 4 in center, + part of wall 1 of Room 2 beyond.

Room 4. Wall 3 + walled-up doorway 19.

Room 4. Right side of doorway 6, wall 4 + beginning of walled-up doorway 19. In all Room 4 pictures, standing meter stick is .42, horizontal one is .21.

Room 7. Wall 3 + small partition wall against it.

Room 7. Wall 1 + small partition wall against it.

Room 6 from room 7, showing square of low secondary walls.

6/18 446 [9] 22 8 8 3:50 Cl. J-9 S.W.
slightly under.

6/18 447 [10] 22 4 4 4:10 Cl. J-12 S.E.
slightly under

O.K. 6/18 448 [11] 22 4 4 4:25 Cl. J-12 W.

6/19 449 [12] 22 2" 2" 10:00 Sun J-12 W.
slightly under.

Room 7 and Room 6. showing small partition walls + square of low secondary walls. Wall 2 beyond under big stump.

Left side of Pier 3-4, with small secondary wall jutting out toward J-11.

Right side + front of Pier 3-4 + small secondary wall jutting out toward J-11. It had a further addition on the end of a large stone on far side + faced with several small stones on this side. On right is part of wall jutting out from J-11.

General view of Room space 2 with its bench + secondary side walls. Room spaces 3 + 4 beyond.

O.K. 6/19 450 [1] 22 8" 4' 2:30 cl. J-13 S.E.

O.K. 6/19 451 [2] 22 8" 4' 3:00 cl. J-13 E.

O.K. 6/19 452 [3] 22 60" 60" 3:30 ^{very} cl. J-4 S.

O.K. 6/21 453 [4] 22 15" 8" 10:15 ^{very} cl. J-4 S.E.

O.K. 6/21 454 [5] 22 4" 2" 9:30 cl. J-13 S.

Outer wall + step on S.E. side of bldg. near E. corner. E corner at right. Small pick near side of doorway 3. Meter stick is .42.

East corner of bldg. + Room 2. Small pick at side of Doorway 10. Meter stick stands at side of doorway 4. North corner of bldg. torn out by tree.

Terraces with panels near bottom of pyramid to right of stairway. Meter sticks — on right .35, on left .42.

Same terraces from front. meter sticks reversed.

General view of S.E. side of building, with stump.

O.K. 6/21 455 [6] 22 15' 8" 10:45 Cl. J-4 S.E.

O.K. 6/21 456 [7] 22 15' 8" 11:15 L.C. J-4 S.

O.K. 6/21 457 [8] 22 2' 1" 11:30 Sec J-2 E.

O.K. 6/21 458 [9] 22 2' 1" 2:45 Sec J-9 N.

O.K. 6/21 459 [10] 22 4' 2" 3:30 Sec J-9 NE.

Top four terraces of J-4 from front. Horizontal meter stick .42. (is near Rufino)

General view of whole pyramid from rt. front corner.

General view of left front corner of building platform + building. 3rd terrace exposed with stations of 2 outer ones on right. Drain on right. Side of J-7 on right.

General view from N. corner showing rooms 3 and 4. Meter stick .42 on half of lintel stone. Large cornice stone outside door on left.

Looking down into rooms 2 + 4 from room 3, showing thrones.

O.K. 6/21 460 [11] 22 8 4 4:00 L.C. J-12 S.

O.K. 6/21 461 [12] 22 8 4 4:30 L.C. J-12 E.

O.K. 6/21 462 [1] 22 4 2 4:45 Sun J-12 SE.

O.K. 6/21 463 [2] 22 4 4 5:00 L.C. J-12 S.

J-12-3rd(?) end wall of building platform. Meter stick on J-12-2nd wall. Which against rear of pier 11-12.

J-12-2nd & J-12-3rd. Meter stick on left at corner of doorway of addition to J-12-2nd which rides over J-12-3 (building platform wall). Which against pier 8-9.

Looking along room spaces 15, 16, & 17. Which against front of half-removed bench.

Looking along room spaces 4, 3 and 2. Which is filled up doorway

O.K. 6/21 464 [3] 22 8 4 5:10 Cl. J-12 S-E

O.K. 6/30 465 [5] 22 8" 4" 2:15 Sun J-20 S.E.

O.K. 6/30 466 [6] 22 4" 2" 2:30 Sun J-20 W.

O.K. 6/30 467 [7] 22 8" 4" 3:00 Sun J-20 E.

J-12-2nd wall outside
n.e. side of bldg, near east
corner, just inside plinth
step. Whisk on J-12
plaster. Knife on J-12-2nd
plaster.

Medial wall at rear of front
room to left of center.
Doorway on right between medial
+ transverse walls.

Left end wall of central front
room (on left), front wall
+ corner of end room, and
side of left front doorway
(on right). Rufino stands in
end room.

General view from left
front corner + above.
Rufino in front room between

O.K. 6/30 468 [8] 22 8" 4' 3:15 Cl. J-20 N.

O.K. 6/30 469 [9] 22 8" 4' 3:40 L.C. J-11 S.W.

O.K. 6/30 470 [10] 22 30" 15' 4:00 ^{dry} Cl. J-20 W.

pier (?) + remaining debris,

Rear of two front piers, if they are piers. Sides of side doorways on rt. + left, but center "doorway" may be merely cut thru wall, as there are no good sides. Near meter stick .42, further one .22.

General view from J-21 Refine in Room 7. Note capstones lined up against wall in Room 5.

Front of right "pier" at rear of building. Good side on its right but not on its left (in center). Part of medial wall beyond with trench cut thru on right. Meter stick on pier .42, other one .22.

O.K. 7/1 471 (12) 22 2" 1" 11:00 Sun J-6 E.

O.K. 7/1 472 (11) 22 4" 2" 11:15 L.C. J-7 S.

O.K. 7/1 473 (12) 22 8" 4" 11:30 Cl. ~~J-7~~ S.W. ^{J-4}

Left side of left shoulder of central stairway showing steps going up from side. Whisk on old rock just below corner of steps + side of shoulder. Tilted stone on left is corner of shoulder.

Front terrace wall + left side of latest stairway. Terrace wall runs behind stairway. Bottom of side of stairway (whisk) is lower than bottom of terrace wall (meter rod.)

Terrace wall at back of J-7 platform (lowest terrace on right side of J-4) To left of whisk (spectator's left) wall becomes much rougher - like fill wall. Whisk is about 5.80 from rt. front corner of J-4, with no offset. Rod

O.K. 7/1 474 3 22 4 2 2:00 L.C. J-9 S.

O.K. 7/1 475 4 22 4 2 2:15 L.C. J-9 W.

7/1 476 5 22 2:20 cl. J-21 S.W.

DOUBLE EXPOSURE — with side
view of Jomita Plate.

7/2 477 10 22 1² 3:15 Sun 0-13 S.

O.K. 7/3 478 F.M.C. Camera. J-21

O.K. 7/3 479 " " K-5.

stands on about level of J-7
platform.

Front + rt. side of enclosure
in room 6.

Front + left side of same
enclosure.

Round corner of terrace
wall back of end of J-21 —
toward J-20.

Right jamb of rt. front
doorway with two additional
abutments. Far meter stick
.35, near one .24. Far one
on original jamb, near one on
second abutment.

Same as 476.

Terrace walls high up on right
side of front of pyramid. Two
terrace walls at left (which
on top of lower one). Side of
stairway wall on right. Knife

7/3 480 F.M.C. Camera. K-5

VERY
Poor.

on front corner of a step.
Meter stick at .24.

Terrace walls high upon
right side of front. Lower
terrace here is same as
upper one of previous picture.
Meter stick at .42 stands at
bottom. Stairway wall on
right. Which against upper
wall .25 back from lower
one. Horiz. meter stick .24.

