

1935 - Book  
2  
413-440 +  
C

35  
413/440  
3 more

Linton Satterthwaite.

University Museum

33d & Spruce Str.

Philadelphia, Pa., U.S.A.

Si perdido, favor de mandar  
este libro a

Linton Satterthwaite Jr.

7. Sr. Francisco Villanueva,  
Tenosique, Tab., Mexico.

PN.

1935 continued

35

413/440  
+3 MORE

May 28. 413 [8] 22 15° 15" 9.9. M. S. P. 7 South

From above over left to endrom. or  
Rod lies parallel to bimid tenor wall with  
runs under bench against medial wall  
(peridrom); Tenor, apparently the same,  
emerges from under lower (top) benches  
of rear left room, & runs under rear wall.  
Boy stands with hand on left jamb of  
left rear doorway.

or

414

10

22 15" 15"

414 1/2

1

22 30"

11.00 AM

to

12.00 Sun

Upper  
Halves

414 1/2

1

22 30"

Lower  
HalvesKup 24  
(just below  
top = 15")

415

2

22 22 31" 30"

2 P.M. Sun

Upper  
Halves

OK

415 1/2

5

Lower - not when same  
order

5

Lower  
Halves OK

Same time

## Figures &amp; Heads

~~Fig. Fragments~~ - left to right:OK  
unitUpper half: NE-6-4, 5, 6, 7; NE-7-2; NE-8-2;  
1st row NE-8-6; S-19-2; S-19-5; S-20-2. W-31-12nd Row: W-39-2; E-52-2; M-26-1, 2, 3;  
M-27-1; M-30-5, 6;

OK

Some pieces in same order, right profile.  
except M-26-1 which is shifted to left end of  
lower row. Right profile.

## Fig. Fragments

Upper row, left to right: NE-4-24 (2 fragments)  
NE-5-3; -4; NE-6-9; NE-8-2; 4; 5; 7; 8;  
S-19-3; S-19-7;second row: W-8-11; W-8-15; W-14-3; W-30-2;  
W-31-6; W-31-7; W-31-13; W-31-14; W-33-5;  
W-37-2; W-37-3; W-39-10; W-40-3;  
W-40-4; W-41-2Same pieces. Same order; profile (all right)  
except when right is missing.

3 22 1" 1/2"

4.30 S.

(hand off pic)

5 Lower 1/2

Figs. K-10 to right, each row in succession

W-8-18; W-8-19; W-8-29

W-31-2; ~~W-29-29 (at base)~~

~~W-11-1; W-11-26 S.~~

↑ Lower 1/2 - sub face

right - quartz profile.

|   |   |
|---|---|
| 1 | 2 |
|---|---|

416 4 22 4" 2" 8.30 S.  
 office window  
 Upper half - full face Second row  
~~The dig out the clay~~  
4 Hammer half - right half  
 22 30" 5" 9.00 v.l.c.  
 415 1/2 5 Hammer half, notches, same + wire  
 417 6 22 30" 15" 12.00 u.m. S.  
 white half - full face  
 Lower  
7 - Lower  
 417 1/2 10 - Lower  
 22 30" 15" 9.10. Same upper half

416  
 Hammer half  
 white half

Body Fragments:

Upper Row: Upper Row: W-41-2; W-43-9; M-26-6  
 14-30-3; M-30-4; - "Model Fragments:-  
 N-4-23; M-6-8; N-5-6-10;  
 N-8-3; W-8-14; S-19-6; S-20-3;  
 S-20-6; W-36-3; W-37-4; M-26-4;  
 M-26-7; M-30-7; M-30-8; M-30-9.

M-30-9 is notional stone piece.

Same pieces, same as OK

(1434)

M-23-1, 2, 3, 4, 5, 6, 7, 8, 9, 10;  
 M-23-11, 12, 13, 14, 15, 16, 17, 18, 19, 20, 21; M-23-17; M-24-1 + 2.

Same, same as. 1 left staying in!

OK.

Stone flint + pottery objects. Retaken.

O.K.

See no. 427

418 [7] ✓ 72 30' 15" 2.30. Opposite land S.

419 [9] ✓ " " " " " "

420 [11]

retains  
left half  
OK

OK - 2

423

Right - full  
Left - profile

421 [12]

OK left side - full face  
with last side - full

422 [3]

8° 4' 8:30 left side  
8° 4' 8:30 right side

Right half: W-8-18; W-8-19; W-8-29

W-8-29; M-25-1. (full face)

Left half - same, profile shaded. OK

Left half - same, left profile, same order

Right half - " , from above. Same order  
order: M-25-1; W-8-29  
W-8-19; W-8-18 OK

2 x 1/2

W-31-2; W-42-1;

M-26-5 W-39-11

Top view

W-39-22

W-35-3

W-39-22

take over

- Profile, same order

Top view

423 [4] ✓ 22 30' 15" 9:00 semi right side  
left side

1' 9:30 L.C. side

424 [5] ✓ 22 1' 10:00 L.C. right side

✓ 22 8' 10:45 L.C. left side

425 [6] ✓ 22 30" 12:15 Sun

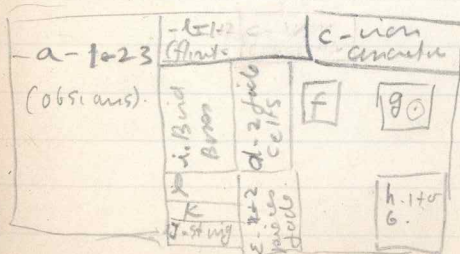
M-26-5; W-31-2 (further) ✓  
W-42-1 (frag) W-39-16  
same side view left profile  
except right profile of M-26-5

same, from above. ✓

Bird bones from Colts of S-29 (NE-4-19-i)  
and carved bone (W-31-25).

Bird bones: all long bones - 26 of 5 small  
bones or birds, 13 of which are fragments  
without articulating ends, 13 with. Plus  
2 fragments of large bird long bones.

NE-4-19 - S-29 sub altar cache. ✓



f: crystalline  
substance  
h: end shell  
pieces  
k: 2 fish teeth  
l: 3 small  
shells (4  
last)

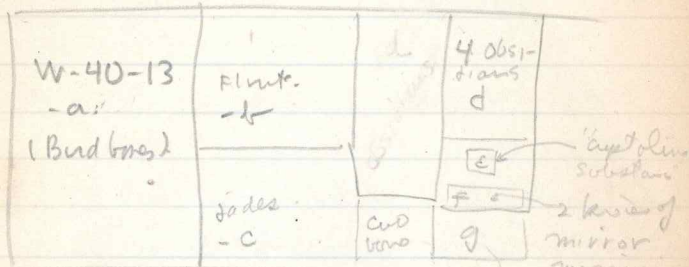
426 7

Str. O-16

Cache Objects, 9

va

22 1' 1" 4 P.M. office window



Right  
~~side~~ have pieces of "p" turned up at left to  
 flash light; <sup>left</sup> side is flat on  
 glass

427 8

22 1' 30" 10:00 Sun.

upper  
half

Stone, flint, + pottery objects. upper  
 half of 41 1/2 retaken. Upper row  
 left to right: nos. S-19-9, S-20-7, NE-5-5,  
 NE-8-10, -11, W-13-20, W-39-13; lower  
 row, left to right + upper to lower where  
 necessary: M-28-1, S-20-5, W-31-16,  
 W-31-26, W-39-1, -3, -11, W-30-5, W-39-25,  
 M-29-1, M-30-1.

22 1' 10:30 Sun.

Lower  
half

Stucco fragments W-13-6  
 7 pieces

OK

428. 1 22 1' 30" Sun 3:00 upper half.

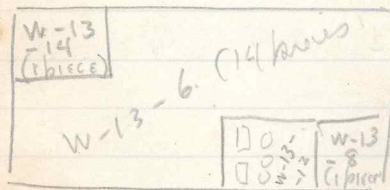
22 1' Sun 3:15 Lower half

429. 2 22 1" Sun + L.C. 2:15 whole Plate

Obsidians. Left to right: Top row: NE-6-2 (1 piece), NE-8-9 (2 pieces), W-13-13 (1), W-16-15 (1), W-31-17 (1), W-37-5 (2), W-39-4 (1), W-39-7 (1); Middle row: W-39-8 (3), W-39-12 (2), W-39-14 (6), W-39-18 (4); Bottom row: W-39-21 (5), W-39-26 (3), W-40-6 (3), W-40-8 (4), W-40-10 (1), W-43-6 (1).

Stucco fragments W-13-6  
6 pieces. Large piece with three dots on left.

Stf. J-18- Stucco fragments.



(and 14 are)  
W-13-6  $\frac{1}{2}$  from  
South east side  
(fwd) of Bly.

W-13-8, ~~12~~ + 12  
are from throne  
room.

See sketches.

430 [3] ✓ 22 4.P.M.S

431 10 ✓ 22 1" 10.00 L.C. (Ranchman)

11 } slits & pulled with 10.  
+  
12 }

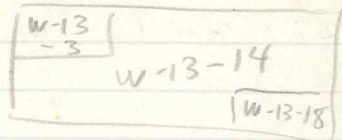
432 [4] ✓ 22 1" 12.30 S. &

433 [5] ✓ 22 8" 1.30 L.C.

434 [6] ✓ 22 2' 4.00 C.

J-18 Stucco

all bud 2  
pieces are  
W-13-14.



OK

J-4 - stucco head... <sup>sly under.</sup> before thorough cleaning  
and removal of parts of secondary and  
third coats of painted stucco.

5/4 Same, after cleaning.

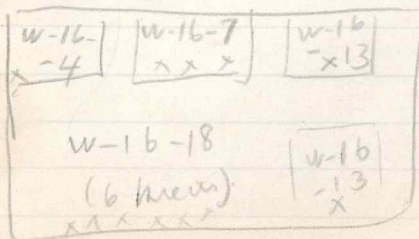
OK

5/4 Long focus - same, profile.

OK

5/4 Stucco fragments.

OK



435

2

22 1' 10.30. Sun.  
off the window

436

1

22 1" 4.10 Sun, window

437

8

(235)

P-7

438

7

(234)

P-7

439

15 min. absented  
in the office. Sun  
22.00.00 just 5 min.

?

1934 Stucco.

Top row NE-3-2.; also 1st 4 of  
second row; last of second row, 2 last 2  
of 3rd row, NE 3-4; 1st 3 of last  
row, NE-3-6.

See not sketch on this plate

Stucco: <sup>do row:</sup>  
left to right W-14-4 (3); W-31-18 (2);  
R-0 is W-43-3 or whd lower right

corner, 1 piece (W-41-3)

Note: W-43-13 is incorrect number W-31-3  
in the photo.

\* incorrectly numbered W-31-18 on photo and  
on piece, which was corrected.

R-0 hand corner, beam joint. Rod & bag at  
left jamb of R-side doorway.

Rt outer wall, plumb & slip, rod at  
head corner (has been printed  
reversed).

Fig 1 head - to be identified here with photo as

440 - Left. 22 1 S. 2 P.M. of J.C.

Rt. 22 2' " " "

[6] 22 2" other.

Seven

~~3-29~~

5-4 - Stucco head, profile

5-29 - Cocks bowl & lid.

OK

OK

Column Altars, left to right. R-1; R-2 (larger - x)

R-3; R-9, R-16, R-10. (Note, Oct 35 - head is R-9, with  
missed R-10 or R-1)

Shallow tops, flared sides up (except R-1, which  
has none)

Flared faces of above, in same order, photo  
inverted.

Note all but R-1 stand on their base -  
R-1 partly broken off & may have been  
as high as R-9. R-16 has a head in both.  
But almost surely this is head of bottom  
left.

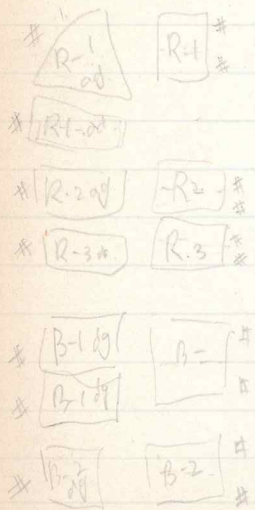
Note taken on R-2; possibly R-3; reverse  
taken of any thing on R-9. Little on nose on  
R-16; striking on on R-10.

Note scaling.

⑤.  $\frac{1}{2}$  @ 22 21 2.00. Sun. 5-11

Mod. wall Mung. Not small regular  
stones (no small tablets) flocking  
down ways. The part, well odd  
is same.

Sept 6



July 21st to 1st

382/2

Booker's - 24 So. 15 St.  
45  
Philadelphia

