

Original Photo. Record
Peabody Negroes Exp.

1932-1933

See final typed catalogue
for 1932-1933
(Peabody Negroes Photos).

CASH
x 150

32

188

PEABODY NEGROES EXP.

60

Bryopsis
L
P

bs.
L.C.
P

walls
Under Trees

- 6"
- 3"
- 1 1/2"
- 3/4"
- 1 1/2"
- 3"
- 6"

walls (Brushed down, fairly white)

- 7-8 7 1" 2"
- 8-9 A.M. Brushed wall in Sun. 1/2 @ US 32 = V22
(Heavy fire ground + RW)
- 9-10 1/4
- 10-2 1/8
- 2-3 1/4
- 3-4 1/2
- 5- PM. 1"

32
1-188

Mul x6 for Roome, under trees.
" x4+ " merely very dark objects

Aug 10 Sun - Normal Ob.
Pan - 1/5 @ 22 or us 32
Ver. 1/10 @ 22 or

Photograph Record 18

Satterthwaite - Voghtlander 9x10

Pietras Negras 1932.

AB. Kodak film pack unless
otherwise noted under remarks.

3

It on
elopment

1/4
1/2

der

1/2
1/4

"

"

1/2
1/4

on

ser.

1/2
1/4

1/2

?

54

1/2
1/4

1/2
1/4

Date	Roll No.	Film No.	Stop	Exp.	Beam	Direction (from)	Subject
3/22	10	45	1/50	3.6			
"	11	45	1/50	3.6			Unloading mules,
"	12	45	1/50	3.6			loads, do., each
3/23	3	1	22	1'10"	1"	SW	Str. XIX - showing
3/26	4	2	22	1"	1"	NE	Str. XIX debris, seen at left.
3/26	5	3	22	1/2"	1"		Same picture as #4.
3/26	⑥	4	12	1/50	1/50		L.S. 'gang' minus
3/26	7	5	22	1"	1"	E	number still visible - Str. XIX - Masonry of doorway. Str. XIV 1/3. The above 4: 2nd loop - 3rd
3/27	8	6	22	1"	1"	S	Pyramid 42 - show
3/25	9	1	Followed	Beam			Str. XIX - Sly end 30 cm further
3/28	9	7	22	1"	1"	N	Str. XVIII - north wall at left. - Masonry -
3/28	10	8	22	1"	1"	W	Ps: 1 jam of doorway at corner - bonded. Not above floor

& Remarks.	Result on Development
pat patch.	
group = 1 mule load.	
debris in sly room ^{not cleared to floor (.302)} room, to left.	
debris, sly side of central front doorway	Slightly under
smooth plaster floor shows 00 right	—
	Under
Jesus. Bright sunlight at 11.30. Lead	Slightly under
plain but dim - after 2nd trial considerable work. # 11.	
medial wall behind central part (E or "S")	
in bright sun, 3.00 P.M.	Slightly under
Read as high as possible - getting higher reading on	
top of 1st reading; highest <u>plainly seen</u> number.	
of Christ's feet, with worked stone at base cut upper of	
corner. - Read last clear number, immediately	
room - debris W of end doorway - floor above	?
down.	
around the corner. Foreway from E range	S4
holding fill behind.	
at left. - for masonry. Note blocks, squared, + chunks	
small (cylindrical?) stone, 2nd from edge, about .95 high W	

Pit. E. Jm. Stop
 21' 6" W direction from

3/29	11	9 ⁽¹⁰⁾	16	4"	4"	N	Str. LI - west room, south end; level of end wall now is about .90; floor is at top of debris .130 N of end wall; debris level there is about .60. End door way to right.	SU
3/29	12	10 ⁽¹¹⁾	22	4"	4"	S	Same room - masonry of N. wall.	CH
3/30	13	12	22	8"	8"	SE	Str. LI - 3 ^d N pier (counting from W end room) - with secondary wall, 4 th pier at 7' left - doorway in sec. was in debris in front. Note difference in size & shape of wall stones.	SU
3/30	14	12	22	30"	30"	W	Str. LI - SE corner of W end room - inside of part at right, in plaster (white) floor. Broken white or pink plaster on the whole floor. This was broken by pick as shown. Small stone wall above broken out wall by man.	over
3/31/32	15	18	22	30"	30"	W	Secondary wall between masonry - use of long blocks in pier - masonry appeared in 12' pier (doorway) end of Room B - showing altar (?) at left + right floor at rt. Note use of long, but irregular blocks in piers.	over SU
3/31/32	16	18	22	4"	4"	N	Str. LI - Middle wall, E. end through to earlier compared with worked ones	SU
3/31/32	17	3	22	4"	4"	W	Same as 15, better exp.	SU
4/1/32	18	4	22	4"	4"	N	Str. XLVI - Niche - No 29 underneath behind & under 16 - floor-like construction with slabs behind - remains of projecting altar. (Note - packed earth - no construction)	very good

4/5/32	(19)	22	1' 1" N	Str LI. - Rng slides over floor - at lower end, roof slab directly on	OK
				Fragment # 19. (sculptured as open surface, but can see it back edge)	
5/5/32	(20)	22	4' 4" S	Str. XLIV. - note red brick edge	from tower in front of niche of XLVI
	(21)	16	1' 1" W	Str XLV	OK
				NO Sketched Aug. 8+9 by not pulling out slide. What beam of 6+7?	
#1	22	22	4" 4" E.	Str. XLVI - Carved niches step in position on at + plaster surface is on over-rippled up. Note third over lower h. to rd lower steps - 50;	firm in front - note fallen carabeas in center, of panel ± so on left. Fragments of stucco above former, better (fragmentary) mod as much fallen as turned over does not seem to follow through at center to either, - 61
4/6/32	23	22	8" 4" IV. 8.15 L.C.	Str. XLVI - sly of 1st no record by	piece of arched doorway, front of niche. Plancher carabeas not working - 2 a double exposure. 2nd #7
5/6/32	24	3	22 8" 8" S 10.46 L.C.	sly corner of niche, Str. XLVI. - masonry.	OK
	25	4	22 8" 8" SE 11.0 L.C.	Nly "	OK
	26	5	22 15" 15" S 3.00 S	Str. XLVI. - nly brick	front of niche - fallen #2
	27	6	22 15" 15" N 3.15 S	" "	Same as #2
4/6/32	28	7	22 4" 4" NE 9.45 S	" " - Pad under masonry, 5' end of niche (bound ±).	OK
	#29			Missed making record. Str XLVI - Stone of throno complex in position - see Mason's log photos. (2 July)	OK even.

3	4/13/32	50	3	22	8"	8"	9.45	pull	N	W-17	S+V. XLIII Siding	fallen fill, gravel + earth, S side of 1 1/2' pit: top of section about 0.75 to low surge - see sketch of same.
3	4/13/32	51	5	22	2"	2"	10.15	pull	E	W-17	W. section of exterior in passage	both pits: note line of slabs on top (slab floor?) - which toward camera, fallen lower, between the pits (there are)
3	4/14/32	52	1	22	1"	2"	9.14	S	W	8' over temple	East end surge at upper floor	of temple - rule is level, at upper floor level - surge at left + right, pretty close to end wall. - surge .50 above as high as anywhere - lower in center? Same says photo.
3	4/14/32	53	2	22	1 1/2"	1 1/2"	10.00	S.	"	"	slings, vs	near wall (rod in place)
3	"	54	3	22	1/2"	1/2"	10.00	S.	"	"	E hard of E front	Lintel - note archaic glyphs.
3	4/13/32	55	2	22	1 1/2"	1"	33°	S	N	"	Fall Lintel bottom course	to easterly front - face down at left; face at. at at. of pier stones left of lintel
3	4/14/32	56	4	22	4"	4"	3.15	NE	XLVI	"	steps + platform	to S of niche - transverse wall ad brick -
3	"	57	5	"	"	"	"	"	"	"	po, with lens	of platform, floor of niche chamber and right lower corner
3	4/13/32	58	6	22	1"	1"	12.00	S	SW	XLIV	Side Platform at = stairway	- few towers on XLVI, front of niches steps - 1st bench to E wall; 2nd goes between "houses"; 3rd, left, hunting house 50 over

Job of
 Balcony in
 West
 High work
 by hammering
 10' nothing
 nothing at all

Date No. Floor No. Top Time Re. Win. Poy. T. of Day Sum. Position Structure

4/19/32	59	7	22	4"	4"	2:20	S	E	XLVAI
4/17/32	60	8	22	4"	2"	11:00	S	N	Ob W-17
	61	9	22	2"	2"				
4/17/32	62	10	5.6	about	20"	of ribbon			Table of XLVI
	63	11	5.6	"	"	"	"	"	"
4/19/32	64	12	22	2"	2"	7:30	E	N	XLVI
	65	1	22	1"	1"	7:30	E	NE	"
	66	2	22	2"	2"	11:30	S	SW	Ob W-17

Remarks

Note cornice - stone masonry. Arches in Picture. OK
 Vault - Step at back - Cap stone etc on bottom. Long base just in front of envelope; skull under vault, and steps, under extended to .42 is at its left, 1 on its level. Long shell about .75 x 1.2 a little bit of long base. Poles is about 1/2 inch from top of (under for shadows) OK
 all supplied fragments - can't light so long a thing properly with ribbon - over one end, under the other. OK
 Right hand fragments (spacing) closer up, light for it. OK
 Light a little nearer (about 1 m.).
 Stairway + platform, transverse wall, S of niche.
 " " " " " - note part of vault to right.
 Haemite(?) mirror (many pieces) - partly under inclined slab fragment at it + fallen stone at back - lies at angle about 30°, up to right, + slightly up at rear end to front. OK
 too slopy under for this.

90 F. 100
S 5 22 30 30 2 PM S
W. 17 - H2, albas

4/29/32 84 5 5 22 30 30 2 PM S

W. 17

H2, albas to knees. Note joints over long cylindrical side head about
hips - do one long square vertebrae do. 00 190 hips; rosette (⊙) (dep-
side down. Below femur end (upper); phalange below hips
& between femur; large apical clay head left of left
femur; pile of joints below left knee (if visible); teeth
above left hip; got of apical (?) and inside left knee; small
jade heads on left ulna

4/30/34 85

5

4(10)

22/30 1.45 S

W. 17

Po. knees to ankle & beyond; note femur of #1 showing partly in
lower left. for center, other bones of #1 - 2 large clay
heads with small vertebrae between (at). Mass of
vertebrae + c. over ankle; 2 large clay heads 10 from pile
of phalanges, ribs here & there (showing?)

11

86

10(11)

11

Po. - body
left -
bones

#1. hips (?) to ankle + shell - note good bones, lower
when lower center - broken & displaced long

5/1/31 87

86

12

11 22/30 30 1.05 S

Po - large

Mina, S. end. Po, before removing bones nearby.

5/1/31 89

86

12 22/4 4 1.30 S

Po - cache
oyster shell
hiding 2
in front

S. of skull of #1. Note handle munt (single piece); strong
smooth shells; couple of spines; phalange (?) 10 to 12, partly
pieces of jade at end; joints bones (3 in package, one loose)

5/4/32 90 22 1" 1" 3.5" S S. X+X1

Boundary

long blocks

blocks in

" 91 16 1" 3.0" S E X+X1

(Parker stones

3 or four

" 92 22 1" 1" 4.5" S

Lintel re. used in XXIII

Plaster rem

half; also

at half

worn off

in 10. //

5/7/32 93 4 22 1" 1" 7.5" S N. XLII

3^d floor level

on Gated

1.85: Floor

falls away

5/7/32 94 5 22 4" 4" 5.5" S 5th Str XI

Section thr

ough floor,

1.0

stone next

relax.

line, southern field; special construction in center; note
at right, on slabs (a few) walls; angle blocks at left; falls
center, higher.

- sun shadow: note central slabs fallen to south,
behind (originally under) them.

and from top row, right half + part of row at left of this
at left Parker corner of top half; in upper rt. corner of
fracture panel: Note hard smooth plaster on later - possibly
showing out line of feathers; "hush" marks in yellow
- thick - several layers on other parts

- Medial (or front?) wall at left: Poor way, with
wall passing through center; leaning out about .15 cm on
is dirty - good plaster on it in places. Embod at left
from it + is larger



Note that floor covers lower
lines of slabs + laps over the upper: made obviously over it - here
when thickness over the sand .02. Floor of very small
on rubble + earth (now at least) fall - bed rock very
relax.

Sketch of wall
B W 700 SW

5/4/32 95 6 22 $\frac{1}{2}$ " $\frac{1}{2}$ " 93° S N St X Sly half of
of wall
ruler
+
7 (6 shaded by other steps +
1" instead of $\frac{1}{2}$).
stair

" 96 6 22 $\frac{1}{5}$ " $\frac{1}{5}$ " 130° S NW St XI From N of X, at
place w bottom
plate form
Rounded top

" 97 9 22 $\frac{1}{2}$ " $\frac{1}{2}$ " 200° S N St X N wall -
wall has

5/10/32 98 10 22 8" 8" 100° S S Opw-17 Shell plates
curved
in upper
20 - holes

5/11/32 99 11 22 8" 8" 80° S NE of w-17 (BW M of 3)
Ver below 80
stone on

top, cleaned, nothing moved beyond 1931 trench? Note remains
at left (inside) edge; it does not continue to S; floor in front of
(plaster, but not smooth; small stones among blocks, especially
in foreground)

top. Note slots of plate form + of sloping wall. later in
left - much fallen higher up - at right, but set out in
by tree (2). Ramp, but at S end in line with base of slope
stone in center; no slots w top of slope, instead, blocks

Buttress (?) partly fallen, filling set back (?) Note has
fallen here - buttress was for strength?

at N.E. Corner: Note where one 20 along E wall,
line on level in foreground (2 deep & right) 18
level are rock face - rise to corner, about
about 5 below skull of B.

- Skull in A - note lies on rocks which lie on level of B.
over feet of Muroy of B. 2 head sheds left & right
w. thro of B.

100
F.A.M.S.

B^W good gully str.

5/11/32 100-122-4" 4" 1045 S.N. W-17

Same as
sk A of new
~~site~~ S of
bones
by, are on
of B is no
hips + thigh
the good
up small
no bones
a pelvis,
be the
No location

99, after removing 4 vertebrae + ribs fragments. Note that
"hips" down, is higher than B, as noted; but the ~~bone~~ ~~to~~
+ the forehand + vertebrae + ribs s.s. of A is feet: but the
supposed to be human s.s. which + ribs fragments near
same level as A + (very slightly higher). NB. Skull
higher (at base) than ankles: but A slopes down from
pelvis continues + would make the head actually higher.
bones of A, instead of following this angle, turn up
stone + earth. There were no large stones under A here - and
except vertebrae + ribs fragments. and the slight traces of
not of more than 4 vertebrae, between what ought to
upper end of femur (it appears to be) + what ought to
of elbows i.e. for .40 s.s. of end of femur, toward head.

5/11/32 101 101 22 2" 2" 100 S SW W-17

Skull in A
Note how
other bones

after removal central pits of bones: cleaning skull bones, &
foot of B clear space which was occupied by the pits. no
of A removed

102 102 " " 2" " " SW

103 103 " " 2" " " SW

104 104 " " 2" " " W

5/12/32 105 22 15" 15" 7:00 S 10⁰⁰ Apr 17105
6

SK. B - hood
- collar bones
over one
vertebrae
of side,
1 bead at
2 with holes
chin, other
"rosettes"
nose + eye

105 7 22 30" 30" 9:30 S 10⁰⁰ "

over 8 should

Close up of
7 incisors

3/12/32 106 9 22 15" 15" 10:30 S 10⁰⁰ "

Region of
left part of pel
from this
intimately
small beads.
Prob along
caudal vert
Remnant

shoulders & chest. Note line of "rosettes" & furrow
both on "V-shaped" - broken hollow scalloped hatched,
bead - 1 clay bead b/d of string which crosses it.
from chin to long bead (& beyond pendant, 1 large pro
keg bead 2 or more times its angle with small cylindrical
end of chin; ~~the~~ ~~bead~~ ~~is~~ used with - 4 with j. (? below)
for it; small bead bead just above balls at top of
was 2 just above shoulder, 2 present of
- under 76 + above (2 on) 374. Red hand on teeth, on
rosettes is very plain.

beads part of chest. - teeth cleaned a little better;
reflection from sun on side wall. Taken in 5 to 6 sec.

plus - into more of small jobs & shell discoidal beads on
vis, with 1 molar & 1 incisor; on envelope, 3 small shells
general region, beads, 6 molars & one incisor - the latter
associated with beads, but with remnants of jaw: here we have
undoubtedly in line, but not mixed - j. & skull line.

bone (small (c-1) + 2 smaller long bones over & beside long
long bone transversely below pelvis (end only survives
of ad pelvis at arm (rosettes here could break it

5/18/32 H 01
3 22 4" 4" 7.05 LC etch. 5th altars

altars
to
(tower)

Not
right
was
app
over
the

" H 00
13 4 22 8" 8" 1.3 Pull S+above "

(tower)

60

Wend or east of slots 50 left: "apartment" east end
including Mallic stone (later replaced in position) its
ala; the big slot at rd was over its present position,
apparently had been a "cover"; the small slot
it, on edge, is replaced, in very different location
as were slots on this side on edge. Big full
stone behind this east is in position; note another
a near end of east - later called level on large
fill of the mound.

at angles to above, but with more horizontal angle: altars;
a lower foreground: sides/points between 2 which have
fell over edge onto slot (rd on edge, left & no) beyond
slot (upper, background) 3 more, 1 on edge. The whole
stones either side of slot on the edge of slots. Ex here
lower foreground, stones including slot on edge are
about .50 E of E end of "apartment" east: broken
slot 7 in of this should check in both pictures
Not how altars have fallen or been the way: 2 in line

" 114 ⁰¹/₅ SW exp. W 10 (tower) " W by first row seen +

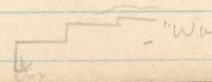
" 115 ⁰⁸/₉ SW exp. S ¹⁰/₁₀ (tower) " S

" 116 ⁰⁸/₇ 22 2" 2" 9.5 mm del NW XXI W by

line of altars - 6 ± inches + 1, badly weathered, lower, beyond 21 1/2' has ended. (this may not show - see plan) no step on edge of steps; in is at about 50 N of wall line continued - of base preserved, they are hidden by the long tree roots.

side showing of altars in line, very closely small, starting at SW corner + running close to what I think a stairway began - probably used to be - not here well preserved the wall is to ad of it, altars: there was debris here, & still is a section, which looks like a badly ruined stairway - have a damaged side wall further and (see plan). The altars is set in further; possibly this is an offset in the wall, under the tree. No. 6 has been covered the whole central rear part of S building.

side: center at stairway: left side wall about 40 beyond plastered wall of earlier lower structure of which follows lowest step: to left (N) of step, not a wall (partly cut away); 2nd terrace wall (mostly broken out, "steps" behind it) - "Wall" of center section



" 117 ^{ag} 8. 22 - ?? E str X From

117 ^{ag} 9. 22 1" (K. m. 25m). L.C. 28 str X XI South

117 ^{ag} 10 22 1" 1" 8" S. N. W. 250 str XI Center

" 120 00
" "

S. W. 250

" "

shows slab of smaller, from behind. a glimpse of XI left upper?

top str XI, center note long expanded slab. absence of slabs & presence of blocks above level of its top. Remains of wall at top, under

playing field - top of house & tower - fallen part near center: showing these parts in either side of North ground.

to southern end: slabs as end pulled over by trees - have been removed from platform (see prior picture). Not round topped stone in center of slope - altar - no slabs left up

to northern half: note falling slabs; bit of floor left at north end, with concrete in place on slope of platform behind it (see sketch-section); concrete floor in place on platform with slope between this section & halfway to center - broken remains elsewhere.

5/27/32 121 ^{ag} 22 1/2 1/2 S | E OpW-17

Wly

niche. Note rougher construction below niche, but the lines
 all side do not carry down to indicate a secondary walling
 up; note fallen slabs + absence of any which look like parts
 of a single lintel; probably niche is shallow; note
 hematite pieces in earth above floor of niche, +
 full stones above this level (fallen presumably).

" 122 ^{ag} 22 4' 4" ^{2nd floor} S | (cont) OpW-17

P. of standing partly, note hematite band. h. bar
 at of it; two of heavy shell just beyond middle of
 band

" 123 ^{ag} 2 " 2' ^{1st floor} N.

S. end - bench: wily niche at left - not protruding
 bed rock out of bench; appears in correspondence of
 corner of niche. Note mosaic - white deep plane
 above: cement having glass cover.

5/27/32 124 ^{ag} 22 15' 15' 10' ^{1st floor} L.C.

W-H.

Hematite mosaic (bands in position in wily niche)

as to top more disturbed - } white plaster
 - shatter, only shag } close up } dark streaked
 layer sly " } around

" 125 ^{ag} 5 " "

" 126 ^{ag} 6 " "

1/30/32 125 ^{at} 7. Same time. 2, 3 ^{at} Sun. W. 17 N.

^{at} 8
Same time

1/21/32 126 ^{at} 9 | 22 | 1" | 1" | 2. ^{at} 27 | S | East S/E XLVI

end, & floor: into wall as left level over 2 projections of hard rock: mark & angle in by wall - mine would follow in end. Like D level in back - grass into embankment of grass which looks like top of a rock shelter: outside on level A & G.

Same view, from bench.

Southern end, (E) right: is then of batter wall as seen, above level of ~~closed~~ class 0 & rising to surface above; beyond its top, the stairs of road elevation leading from roof of XLVI. To right of batter wall, end of why wall of class 0, with part of wall 0 - the end following the batter of the 15' mounded wall, which has fallen & is further back. This why wall resting on small fill against the batter wall, at level of floor of closed - & does not go down as expected. Center: rear wall with/and of vault, end off by transverse wall at left which runs to front, but rises straight above of level (secondary?) This rear is 50' further back than that of closed, which lines up with throne room in general.

No. 127
 5/23/32 127 10 16 16" 1" 8³⁰ S. N. 5th of
 alley

5/24/32 128 11 22 4' 4" 8³⁰ S. N.E. ST XI
 (tower)

5/25/32 129 12 22 15' 15" 8³⁰ C.E. NE ST XI

C.S. #2: The 1100 slabs at bottom are heavy blocks, .20 in
 thickness: slabs at top are in limestone (slabs on edge)
 slabs at N (front) are new and.

Str. E by side. At left, barely felt in vertical wall runs
 to our cut exposing water-wall immediately behind
 it: back up again (to 3 courses only) & runs behind
 a bench: appears between this & only remains of
 another, or an addition to it: bench: runs N from
 this and sized under diagonal mound.

Above all this & 200 back - a very rough
 vertical wall to cut at right.

Behind this low upper wall to a low center
 then, further back (front / rear here) to of a
 better wall, exposed deeper in right-hand
 cut. This runs to Nly end (apparently).

High better wall, at my (?) wall at sample (left) - section
 jam? - checked missing apparently with hard mortar.
 Still "yellowish" plaster found in corner. Strong
 wall better also - this is continuation of cut shown
 in 128 - N of "altars".

5/25/32 130 $0^{\circ} 4'$ | 22 | 8" | 15" | 9.00 | S | from SE. | Str XI

(Chisel said probably a
little long.)

" 131 $0^{\circ} 8'$ | 22 | 5" | 1/2" | 23" | NW | Str XI

" 132 $0^{\circ} 3'$ | 22 | 1" | 2" | 3.00 | E | Str XI

5/26/32 133 $0^{\circ} 4'$ | 22 | 1" | 2" | 11.00 | S | South | Str XVI

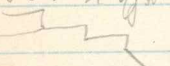
Sly end showing offset (left) - horizontal top of offset
with vertical wall behind it (remains only) -
Most sly inclined slot shows over road to left -
Note level of top of offset drops 15' just behind
bottom of slot, which is about level of platform
top. Note masonry

²¹⁵
Chops Photic:


X from tower on top of X1.

X + hand of X1, sly ends, from tower in
S/playing field.

X from center of top of X1.

Not terrace of hood's top at top, running around
end  Plus 50-30 of junk on top

Long "slot" in sloping wall

Nly end of thermo room - L-shaped bench - plaster on
all surfaces - some plaster base  was pink (trace of
in white).

5/26/32 134 ²⁹ S | 22 | 15 ³⁰ | 15 ⁴ | 30 ⁴ | S | SET above
 9 W
 ST. XLVI

5/27/32 135 ⁰¹ S | 22 | 3" | 4" | 1.30 | S | WNW ST. XLV

Southern end - after partial excavation: - wall @ 22 is on
 slope of boiler wall, or level just below bottom of rear wall
 of law chamber which ends vs the boiler wall, has ear of
 left, partly torn out, 2 ft behind, exposing end of
 above mentioned rear wall, which stood up + s to
 follow it. - Camera is high + would surface hidden
 but it's an overhang - part of floor of chamber to
 right, broken + showing fill under it + under its
 rear wall (mentioned above) Rear wall (original)
 at south end shows as left, about .50 behind
 the above: + broken off at this level, apparently
 to make way for boiler wall (see sketch to
 be made). Boiler wall rises to level of roof
 (probably could see no high in picture).

Southern end - interior vaulted (to be airway - half)
 would be right, in to full height, through the N-S
 vault, against the E-W vault (at left).

Note absence of offset.

6/3/32 136 ⁶²7 | 22 | 2 1/2 | 2 1/2 | 45° | S | SW +
on inner | 57r
LIX

" 137 ⁶²5 | " | " | " | SE at
lamin | LIX

6/6/32 138 ⁶²9 | 22 | 1" | 1" | 23° | S-E | XLV

6/6/32 139 ⁶²10 | 22 | 2" | 2" | 2.45 | SW | XLV

2 wly central piers: not small vaulted doorway
right center (between gables): part of n
vault of sly end room, extends right; sly
part of small doorway connecting this
with wly gallery: note Masonry - liberal
use of small slots: well squared blocks
at corners; Plinth; pascas.

Sly end room: 4 doorways inside, chosen in good
total vaulted: wly part of near doorway just
turns for the vault: note part of main
sly end (end) doorway. Plaster on inside of
sly wall near floor (floor very clean)

Small gallery at N end: note pier
probably pier to pier
full of up doorway
note of base

whisper zone just north of SW corner -
note apron cornice, sloping whisper zone (slight)
projecting stone (to support stone) - well in
building below

6/6/32 140 ⁰⁷/₁₁ 22' 8" / 8" 13 1/5 / SE XLVI

N. end; 3 steps still in place and right in line
 behind them the rear wall of the room
 coming to an unfinished end (this is head
 of ~~the~~ ^{the} ~~corridor~~ ^{corridor}: has removed the ~~corridor~~ ^{corridor} as
 at rear of "chamber", which reached only to
 third floor; the (h) of later (by) steps (as
 at ~~end~~) & there remains in position,
 being in road air: with ~~rears~~ ^{rears} ~~of~~ ^{of} ~~steps~~ ^{steps}
 leading down & back (the rubble under
 which has just rolled out: same as
 a m or so thick. Note rear wall of
 original end chamber (dark red) broken
 off by ~~steps~~ ^{steps} bottom courses. This is head
 of ~~was found~~ - to ~~rears~~ ^{rears} ~~of~~ ^{of} "trench" -
 but bottom courses following N. looking
 rear wall of throne room. The plan is to
 have ~~been~~ ^{been} ~~left~~ ^{left} ~~of~~ ^{of} ~~chamber~~ ^{chamber} ~~wall~~ ^{wall} (same
 as rear of throne room) - the trench is
 opposite it against the original rear wall

8. N^o 1. N^o 5^o 2^o B. W. gang 5^o 8^o water
 Structure

6/7/32 141 1^o 2^o 30" 30" 7^o 8^o NE L1

" 142 2^o " " " " NW L1

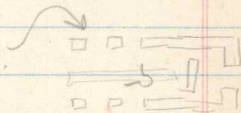
" 143 3^o 2^o 25" 30" 7^o 8^o NW L

" 144 4^o " 30" 30" 7^o 8^o NW L11

" 145 5^o " " " " SW L11

L11 length - 4^o 3^o, 2^o and 1^o 15^o pieces (counting
 numbered W to E) of N. side; secondary walls;
 Room B in background: Probably can just see
 doorway, thence to end room. Note general
 debris level.

slightly pieces, opp. #2 on N.



See outside corner - mud masonry, bonding - masonry
 plenty - large coramic stones

Subj coram - mud coramic & upper zone, running
 into battered tenaces (only one level shown).



"bit of 3 small rectangular
 waked slots, vs what was
 tenace - some kind of
 stone vs on L11 less green,
 but smaller

Why side; through Nly doorway to mached wall is small
 doorway leading to end room; plenty + wide steps
 lower left - masonry mud so hot

147 132 146 6 22 30 30 5.45 8 wall W

L

" 147 7 " " " " S

L

" 148 8 " " " 8.30 " NE

L


" 149 9 22 8" 8" 5.45 8 wall S

L

- Nly small door through medial wall. Looking down Jesus' bench - note vaulted arch, filled out; nice floor pilaster turns up (no niche - not ~~low~~ rather no bench? cap stone at top is still there, but falling.

Vaulted small curved doorway, w gallery to N end room. note opened as right - there is none on left, so small it is hidden by plaster (down) when well here. The stone as right are upper of various - on left a section.

Vaulted doorway, w gallery to S end room: note 1 side of doorway in the wly main wall; other the end of transept wall (which in turn runs by the end of medial wall, forming another vaulted doorway in house - have 3 + the gallery now which is \pm complete.

Same as 147 - with cut through which is left of wly half of w gallery vault. Note the in of corner stone . That vertical band of volcanic stone and glass (1.8. was built to wind 1.2? (cf. 12.1))

6/7/32 150 10 22 15" 15" 9" 8 E

Str L

" 15/ 11 22 8" 8" 9" 8 X

Count 2:
+ error.

" 152 12 22 8" 8" 9.5 P S

Str XLVIII

gly area on East side: note chunking

stones: left to right

A. Large "metals" from surface of NE corner of Str. L III (also on ^{near} corner at this level of XLIV) - typical hollowed out rectangular block - broken as 1978.

B. - "Metals" - in debris at NE corner of Str L. - this is in a slot only of structure.

C. - Frag. of slot from level to XLIX - marked off in glyphs by slightly incised lines - like one from L1 last year. Line not penciled.

D. - Cornice stone (?) - from Nly doorway of gly side of L - note hole drilled at upper left corner. (see sketch above).

Transverse wall & vault, gly gallery, masonry division wall: Secondary probably. Note absent use of mortar. Upper left. Vertical masonry walls of blocks. show

4-1/2 153 1 2" 4" 4" 10.5° 8 N SW XLIX


" 154 2 2" 2" 2" 10.5° 8 NE SW LVIII

" 155 3 2" 1" 1" 10.5° 8 E SW LIX

156 4 2" 1/2" 1/2" 11.05° 8 X SW LIX

" 157 5 1/2" 1" 1" 11.10° 8 NW SW LVII

Small: rear wall broken and behind meter which (at 1 meter) - appears to be a ^{break} ~~break~~ line to its left; in center of dist of head wall, forming door jamb (but could not find this either side for 2.5 meters: edge of head step (in particular of plumb) lower fragments - from tower at steep angle 45° - rear wall probably retaining wall - 1.0 m. etc.

complex midway, on Ely range: possibly should be called end of LVIII, beginning of LVII. Is it a cornice stone or remnant of vaulted doorway at upper level?  Slide @ 20.

Sly doorway between galleries - note large cap-stones - identified with some which appears to be cornice stones (as at 16' end of XLVIII; ~~to~~ are on L.

Stucco - top of group from Ely end, at Ely end of S room + odd pieces probably from Ely gallery.

Junction of niched kaseva (end room) wall - showing latter as part of narrow doorway between ~~to~~ + small piece in lower left - 1.5 or 1.0 above floor level

47/32 158 6 16 1" 1" 11.29 LC E

Sdr. LVII

47/32 159 7 16 1" 1" 11.30 LC E

Sdr. LVII

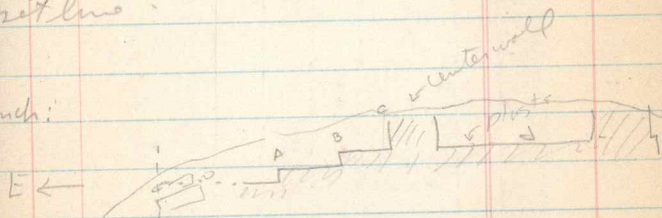
" 160 8 22 4" 4" 1.45 LC NE

Sdr. LVI

Looking down ply gallery (had well above floor level) to concave wall (hanging) - also to 45 degree face of "tanks" - the line of them from N. broken down wood window; line plain at rd foreground

With in W. end wall, room W of gallery mounting gallery (originally a continuation of it - not to triangular (Palengas) shape - is above offset line.

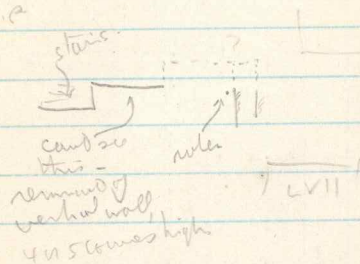
Trench:



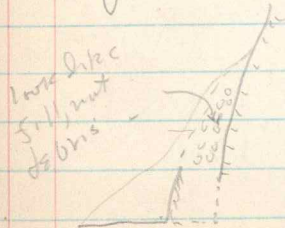
A - same left - from closed in line - 2 stairs only showing; to right is B, 1st stair showing
 at C - under, or to 1 meter, partly behind stones filling down sly face of winter wall. Total depth above floor d (can not - draw show here), about .90. No more slots

4732 16.1⁹ 4' 4" 2.10 L^c 9 Court 3

Terrace behind W end of LVII - i.e. part of
substructure of LX. Rule, i.e., rests on Plaza
floor level - * terrace rises probably about 1.50
(mid center about 1.00) - second, much higher,
rises down behind it as shown by cut through
195 terrace. Rule is a few cm south of
inner corner of St V. LV I stairway, and
wall of that substructure appeared to run thro'
for 1.0



* Probably there was an adobe, or adobe wall



6/7/32 162 10 22 4" 4" 2.85 LC S

Str. LVII

6/7/32 163 11 22 3" 2" 2.40 LC W

Str. LIV

164 12 22 4" 4" 2.50 LC SW

Str. LV

Trench - through 3rd/4th doorway on S side, running W to E. Note Reinold's - probably same as right - ruler stands on floor, rests against debris in position: to right of debris, narrow trench leads back to medial wall, forming wly part of small doorway, other side not visible. Note plinth and broad step leading to court level. Masonry.

Two trenches; Pair at left, in plinth leading directly to Court 3 floor. Medial wall at end of trench, ruler = 1.00; Pair in position at E of narrow part of trench; in front of it on clott.

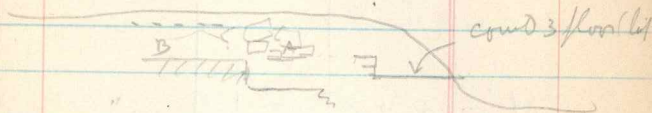
A (left) - piece of large stucco moulding found at surface .50 E of medial wall, opposite this trench - surface then .25 to 30 below wall (about spring of court level).

B (right) - small slot, irregular, with irregular angles, with bored hole, almost certainly - turned out in clearing along top of medial wall, near X.

Why (left) wall at N end - masonry. Blocks & slots - cleared only.

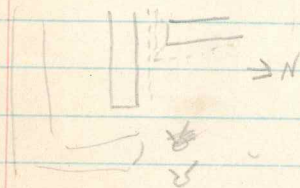
6/7/32 165 ⁰⁹ 9 22 4" 4" 31° LC EStr. LIV" 166 ⁰⁹ 7 22 10" 8" 32° LC EStr. LIV" 167 ⁰⁹ 3 22 5" 5" 34° LC NEStr. X2VII

Trench, near Nly end.



A = white smooth plaster floor with rollers @ 2.0
 B = 0.0 NW of A
 Same near 60° off horizontal - see slab 5

Sly small doorway between gables: Nly wall of
 end room at left: into vault over doorway (left
 side is end wall vault, with very thick cap. stone
 - filled up as mch (cf 2)



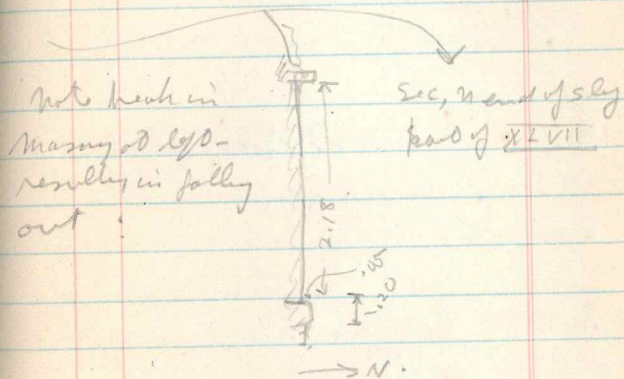
North end wall of left, rear wall in background - note
 2 rectangular openings - beam holes? in vault - sly
 of vault = offset out, coming to very little at left.

4/7/32 168 ⁰⁹ 4 22 8" 8" 4" LC E 57r XLVII

" 169 ⁰⁹ 5 22 30" 30" 4 1/2 LC N 57r XLVII

" 170 ⁰⁹ 6 22 1' 1' 4.30 C E 57r XLVII

to pier; bench to ~~right~~ As right leading to rear wall
with another pier on rd side of bench; masonry
working well in foreground hides floor & plinth.



Cut (Section) ^{A-B} across vault where bluntness comes +
runs E+W.

Carbeling? - Rule @ 20 is on top of vertical
head of wall.

6/8/32 177⁰⁸⁸ 22 8" 8" 9.15 P. N (NW) E. St. XLIV (Ch)

" 178⁰⁸⁸ " " " " " St (level E)

" 179⁰⁸⁹ " 2" 2" 11.0 P ME. St. ZIII

" 174⁰⁸⁸ 10 22 8" 8" 11.30 P. W (from plot of L) St. XLVIII

slightly part of hand (ch) central (probably only) doorway
 side as 1.60 stands in plan (R) 1.9 as floor
 level & just about measure depth of debris
 at center. Follow plaster (stucco) just behind
 wall, about .30 high - slabs above.

High part of rear (wily) central (d only?) doorway
 - torn out - showing only 2 courses (about 30 above
 floor is level of chy level) - Secondary wall
 running from it.

Stucco as noted was found above which
 is, as in corresponding passage in level
 large piece looks like a rock - long moulding
 probably.

Central room (S.W. corner) - into subterranean
 entrance - Stucco - max height of
 mound about 1.60 - doorway at right: note
 masonry - is N.E.S. wall secondary? - is there
 a piece at N, west facade - solid wall
 begins at right.

6/8/32 175 ⁰⁹/₁₁ 16 1" 1" 11.95 J. N. St. XLVI

" 176 ⁰⁹/₁₃ 22 8' 16" 11.95 S. SE XLVI

" 179 ⁰⁹/₄ 22 30" 30" 2.15 S. S. S. Platform XLIV

4/9/32 178 ⁰⁹/₅ 16 7" 15" 7.15 LC - Finds stone
w. g. megalithic
Stairway.

" 179 ⁰⁹/₆ 22 1" 1" 7.70 LC Altar 1

Edge of partition walls. Above construction
This is the one which may run out further
the 'round' being as in fig. 1
Vareo crushed: this is
only a half round, against the hill.

North end - now come. Plumb line lies in
beam hole. (see sketch - Vareo
Masonry.)

N. E. corner, curved structure of the
square blocks - Masonry. Note all cut stones
at corner - a little binding.

Slabs at bottom are just under small
stone of floor. See Plumb Construction.

- 10 glyphs + heads of 5.



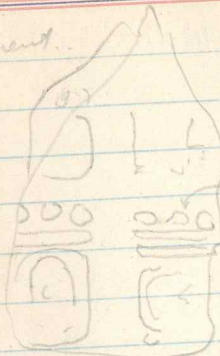
- 4 pieces replaced in position on ground marked
with chalk - but it was done.

~~6/9/22~~ ~~28~~ ²⁹ ~~7~~ # 22 30' 1" 8.00 LC - altar: 1

" ~~74~~ ⁸¹ ~~8~~ 16' 1" 1" 8.40 S NW Platform edge
Str. IV

" ~~138~~ ¹³⁹ ~~9~~ 16' 1" 1" 8.50 S NW "

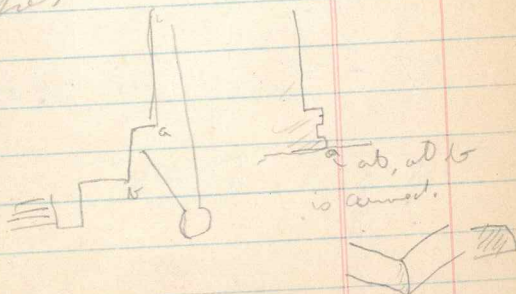
Small fragment.



little lower -
mythical
a crescent.

- Stairway, N.E. end: made of balustrade symmetrical &
better on one end - when it comes up to top
of 3rd step at least.

W. by facade: offset - panelled plinth (comes
around offset).



6/1/32 183 $\frac{29}{10}$ 22" 1" 95° S. - Lintel 12 on S $\frac{1}{2}$ IV

" 184 $\frac{29}{11}$ 16" 1" 110° LC E St. of No. 183

" 185 $\frac{29}{12}$ 22" $\frac{1}{3}$ " $\frac{1}{4}$ " 112° S. - 2 stones on XXVI

186 - + hms. table edge - head photo (XKVI)

187 - Large Masai mura " " (XLIII)

188 - Lintel #8 (XXVIII)

at at piece which was vertically vs Ely part of Ely doorway. ad left 6 pieces as fitted by Pava - below corner & that they don't fit the other (had little time to try). the 3 left pieces certainly do fit.

Lintel, near XXVIII. Note doorway under, at top, wall stones in pretty good position & long. They lean out slightly.

Note curved sections - both are good/aligned corners as under sides. See sketches.

1933

2/13/33

4

Masore, 58

corner of Iglesia, Chichen Itza - corner stones
end - squared blocks, no coursing, cherted
plaster covered.

"

5

E. Cannon,

Monyus, Chichen Itza - end doorway & wall S of Jan
Thin joints on end - marks elements tied into
"faked" rock & mortar - window wall is heavy
squared blocks tied + into same - the backs of
these blocks show next to jamb. This is
pretty good

Coursing on the
inner wall, but



backs of inner wall
blocks had ~~no~~
tools

blocks are ± square, not long. Seams
similar to front walls in Str 48.

The surge blocks are "veener" but
thick enough to add strength



shankling

1933-
1-317

1933

6 - Sparta

7

Chichenalpa
Munja's- court S of Munja's Annex from E end of
- note benches in S rooms & hall.

7/1/33

8

Chichenalpa

- Prof. Pineda's 'Old Chichen' - saddle
square column - section of front wall
+ bold - banded stone - heavy 'veneer'
level for top, Munja's chicken

2 (?) rooms S side, 2 x 9

2 others W side

1 pack of 100 boxes - sections
fallen
other- Mexican, Turtles, 2 Governors, piece of
Jade, governors, view of fallen decoration +
side etc.

7/4/33

1 - Tenor abandoned building

2 - Chinks on opp side

3

to

10

} structure on route to Yarchilan, etc.

on bank, adjacent side to Hotel Chichenalpa

145
 Mar 27 ✓ 2 K-3 32.03 | 1/2 | B 1/2
 W 1/2 | Sun | 10.50 | J-6-2 | S E

146
 27 ✓ 10 4 | 22 | 1" | W 1/2 | Sun
 (under
 tree) | 11.30 | J-6-2 | NE

147
 28 ✓ 11 K-4 | 32 | 1/2" | B 1/2
 W 1/2 | Sun | 8.45 | J-6-2 | NE

28 ✓ X K-5 S powdered
 12 ✓ 12 K-6 | 32 | 1/2" | B 1/2
 W 1/2 | Sun
 (under
 bushes) | 11.30 | J-6-2 | SW

97 ✓ 13 1 | 22 | 4" | B.4" | S
 under
 tree | 3 P.M. | J-6 | S

checked
 cat

Masonry fill wall - extends to right to travel,
 meeting fill; probably extends to left behind
 J-6-2 under rear wall, go to left. Note part of
 vault on later, corner over third end wall.

Masonry walls; masonry fill on "floor"; the
 later a lot of fill wall (also reaches to
 under side of masonry fill, which rises to
 surface ±, above: OK

End of rear walls - note vault carrying
 through at rear. - consistent use of slabs
 near top of end wall, less & larger below.
 Same as #10. OK

On side of front wall, fly end (break at rd, door on
 left. note slabs. OK

Rear end of Room 1 - note slab's "binding" OK

Mar 29 ~~14~~ 2 | 22 | 1" B $\frac{1}{4}$ " | S (slab) | 5-6 NE
 W = $\frac{1}{8}$ " under (crossed out)

98

" 15 3 | 22 | 2" B-1 | S. under | 9.15 | 5-6, SW
 W = $\frac{3}{4}$ " Room 3

135

~~MISSING~~

" 16 4 | 22 | $\frac{1}{2}$ " B $\frac{1}{4}$ " | S, under | 9.30 | 5-6 NE
 W = $\frac{3}{4}$ " (light) Room 3

134

Mar 30 17 K-9 | 45 | $\frac{1}{5}$ " B $\frac{1}{4}$ " | Sun | 9.45 | 5-6+ SE
 W = $\frac{1}{2}$ "

MISSING
 18 K-8 | 45 | $\frac{1}{2}$ " B $\frac{1}{4}$ " | Sun | 9.45 | 5-6+ SE
 W = $\frac{1}{2}$ "

99

Foot

" 29 19 5 | 50 | $\frac{1}{50}$ " | Sun | 10.15 | 5-2 NW
 Shad

39

" 31 20 K-9 | 45 | $\frac{1}{2}$ " B-1 | Sun | 10.30 | 5-6+ S
 W = $\frac{1}{10}$ " (light)

100

Checked
 100

Nly. doorway of Room 1 (note pier masonry-slots, with "banding" See W1)

Large washed slab left exposed, & behind centered doorway - cap stone beyond direction of over debris (not slabs).

Large stone (same as #13, + 2 cap stones found just this side of it, also on edge. The large one is in original position. The corner opp. over broken by the fall.

17 + 18 = same view. - the only red work of 5-5, is S. end (another id #1). - runs into 5-6 2nd - possibly a break at id end of meter sticks - not so plain as ^{upper} ~~lower~~ side of slab for ab. No slab any way. OK

Men pulling trunk stump out of muck 10 to 15' under

cut section through load wall - see drawing. Pencil points to finishing plaster running under. touch in foreground (solid fill under floor. Plinth on right - steps to Room 1-a, from rear, at left. OK
 Doubled W exp. for shadow bet 4 & 5 o'clock

Robert #7
Plaster under 5-6

Tom 8/2

Mar 31	✓ 21	6	22	$\frac{1}{2}$ "	B- $\frac{1}{4}$ "	Shed in	11.	5-6	S
	✓ 22	7	22	$\frac{1}{2}$ "		Sm		(2nd?)	
"	✓ 23	8	22	?	?			5-6	NE

April 2 ✓ 24 K-10⁴⁵ 32

145

(R. 10' x 11' 1/2' x 11' 1/2')

11 ✓ 25 5 22 $\frac{1}{2}$ " B- $\frac{1}{2}$ " S. 2. Mist. 7.45 5-6 2nd S

104

April 4 ✓ 26 K-11 45 32 $1\frac{1}{2}$ " B-1" S. 2. Shed. 7.45 5-6 E

67

Shelley
Catalogue

OK
MAY 1964

Same as 20, but lower, for cut end only. S. 2. Under
ruler on left shows angle & height. 6-1/2" Under
pushed 7-OK

5-6 - cut section through ~~the~~ vaulted niche of
Throne I. (Room 1). Note masonry hearting,
running from slabs to block. sly and for
dark

Same as #7 - with trench cut through sand
wall into floor running under - extreme left
is slab pilaster (?) which is built against
5-6-2nd. OR

Shaving rear wall of 5-6, full under stairway of
Room 1-a, resting directly on plaster floor of R.
5-6-2nd; rear wall of latter running behind,
to N.E. UNDER
REPAIR

Room 3: from rt front corner of J-4, 2nd terrace
front of rt whet background - terrace below J-8 shows
blocky; left big tree over Room 2 + beyond Room 1.
platform floor (J-) in front of Room 3. Note 2
piers; plinth. S. 2.

	No.	Film No.	Stops	Meter	Light	Temp.	Str.	Prot.
4	27	K/2	45	1"	B- $\frac{1}{4}$ " W- $\frac{1}{3}$ "	Sun (hard) Shed on.	8.45	3-6-2nd SE
	105							
"	28	9	22	1"	B- $\frac{1}{2}$ " W- $\frac{3}{4}$ "	Sun (hard) Shed.	11.30	3-6 NE
	106							
"	29	10	22	1"	B-1" W-1"	Sun (hard) (normal subjects)	1.30	3-2 NE
	57							
"	30	11	26	1"	B-1" W-1"	Sun (hard) dark object	1.45	3-6-2nd + 2nd NE
	107							

~~Checked~~
~~Calculated~~

Whiter terrace wall - masonry (in foreground) ~~OK~~

Sly end wall, Room 3. On this side end wall
axis behind rear. Does the front end of end
wall sluff forward? ~~OK~~

Bones that shows on rd terrace (bottom of 250
" ~~bottom~~ of door to Room 5. Bone points to
via fragment, with long bones in front; transition
to fragmentary long bones. Note shards beyond
latter, in rd foreground. Right - human +
animal bones found to left + on terraces
below. Note suggestion of plinth just
left of pencil (corner, filled up?) - to right,
no plinth. ~~OK~~

Old terrace 1 m. behind latest. Trench begins ^{2.00} from
S. end (corner) of latest terrace; 1.60⁺ from end of
3-6-2nd room. ~~OK~~

Apr 6 ✓ 37 4 22 1/2" B 2 1/2" S under
 base. 10.3 5-7 NE.

12/1

" ✓ ~~38~~ K-3 ^{US} 3 2" B 2" W 1 1/2" " 2.15 5-2 NE

" ✓ ~~39~~ K-4 ^{US} 3 2 1/2" " 2.3 5-2 NW

" ✓ ~~40~~ ^{5 shorter} 5 22 4" B 4" S u.tr. 3.10 5-2 SE

11/1

Apr 7 ✓ 41 7 22 1" B 3 1/2" S u.tr. 8.45 5-7 SE.

12/1

Checked
 Catalogued

Same as 36, from lower angle: note loose fill
 under 2nd floor; masonry of terrace (or see
 prior picture) - much is on 3rd level bldg. wall. OK

Room 6, looking through doorway to Court I.
 Missing, hands rear walls. Brushes on
 front walls, meter stick base of rear wall.
 Drain runs under. Spotted
 paint.

Same, from tower; note old corner in rear
 wall, about 45° from SE corner of room. Show
 spot.

Fill wall ^(front of) ~~terrace~~ passage, downways - much farther
 down (under stairway). OK ~~spot~~

Lowest level (foreground) - 3rd level base, brush on wall
 SW of corner; to its right terrace wall, which ~~ended~~
 against it; wall of later addition to this in front (in
 red of trench, with 2nd level floor running to foreground) OK
 Behind, add. to 2nd terrace at right - original
 2nd terrace behind, white plaster covered. Floor
 of addition rest on this, as does ruler.

Chm 7	42	8	22	1"	B 1"	S untr.	9.45	5-7	S E
	128								
"	43	K-5	42	$\frac{1}{2}$ "	B $\frac{1}{2}$ "	S un.	9.50	J-2	SW
	3	44	K-6	$\frac{1}{3}$ "	W $\frac{1}{4}$ "			"	"
"	45	K-7	42	$\frac{1}{2}$ "	B $\frac{1}{2}$ "	S un.	10.30	J-2	NW
"	46	K-8	42	$\frac{1}{2}$ "	B $\frac{1}{2}$ "	S un.	10.45	J-2	SW
"	47	9	22	$\frac{1}{5}$ "	B $\frac{1}{4}$ "	S un.	11.15	J-2	
	58				W $\frac{1}{20}$ "				
"	48	10	22	1"	B $\frac{1}{2}$ "	S und Wes	11.25	J-2	E
	45								
Ap 16	49	11	22	1"	B 1"	S und Wes	9.50	J-2	E

Chalky

cut

2nd level, terraces C + D (later with plaster removed.)

OK

On tower, - doors to shade lens.

cut tall diff.

OK

Sketched page

On corner on S + r. 5 - Room 6 to ground.

Sketched page

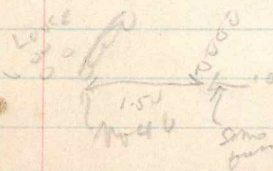
Cap stones; flat faced stone, with rounded neck. face plain.

OK

Room 6. Note line of corner stones above walls, note gaps walking to top; end wall red background.

over

Same as No 49 / plan



plan

Note
found to
near
fill with
left of
plaster

OK

163
 " 11 ✓ OK-1 ^{US} 32 3" B 2" W 4" S, L.C. 830 K-6-9 SW

" 4 ✓ 51 K-2 ^{US} 32 1/3" B 1/4" W 1/5" S (W=L.C.) 1030 3-2 SW

" 5 ✓ 52 K-3 ^{US} 32 1/2" B 3/4" W 1/5" S (W=L.C.) 1100 3-2 NW

" 6 ✓ 53 K-4 ^{US} 32 1" B 1/4" W 1/5" S 1130 3-2 N

" 7 ✓ 54 K-5 ^{US} 32 1/3" S 1145 3-2 NW

checked
 OK 87

Below 1933 excavations. Sixty. Rugs stand on ~~board~~ debris over bench. 3 or 4 meters from the far end.

gavel view from tower on S-S. Room 5 5+6 in lane foreground - 2 st. ls across later. Plain in left foreground. Ed. in Room 2, hand on corner of central passage door.

Wly end, from tower in Court 2. Left doorway + exterior wall. Note patched-up junction with Room 6 (ad right) - note corner line in SW wall of Room 6 - under (?) masonry from here forward.

Room 4 at extreme left. Room 2 extends thru to R. 6 in rt. background - from tower + table.

Looking through passage from tower in center of court I (tower on 1/2 m. of dirt

OK

OK
 slightly for J&B
 OK

OK

OK

OK

Apr 11 ✓ 55 K1 ⁴⁵/₃₂ 1" BW 2 S 2.00 J-2 S
for heavy
forged

✓ 56 K7 ⁴⁵/₃₂ 1" BW 3 S 2.15 J-2 S-E

✓ 57 K8 ⁴⁵/₃₂ 3" BW 3 S 2.45 J-2 S
10

✓ 58 K9 J-2 J-2
11

✓ 59 K10 ⁴⁵/₃₂ 3" S 3.00 J-2 J-2
12

Apr 10 ✓ 50 K11 ⁴⁵/₃₂ 6" W-3 sum
this 3.30 J-2 N8.
13

checked
col 99

Pier & walls, Refined ^{near} sly dir of sly under
medial wall. (Room 3) ~~OK~~ ~~100~~ ~~OK~~
for shadows

Room 5 - ~~to~~ 6 through doorway - note
end of overlapping wall of Room 6 to you of OK
doorway.

Pier, passage doorway (left). Bag stands in
part (SE) of last pier, nearly gone. Slides and
mudstone cr.osing of trench. (Beyond of trench) ~~OK~~

Tower: clear end, Room 1; 2; wall of 5 in background ~~OK~~
filled up doorway. ~~OK~~

Nly end of Room 1 - wall of Room 4 ^{end} or less
at - bag stands in reach through front ~~OK~~
(Nely) wall of Room 4. ~~OK~~

Pier nearly removed in foreground & trench
at left (slides). Line of filled up doorway, ~~OK~~
Room 4, background.

am) 6) 12 16 $\frac{14}{53}$ $\frac{6-2}{W-10}$ LC 10.15 J-2 NE

14

" 62 KR $\frac{45}{32}$ $\frac{1}{3}$ S 11.30 J-2 NE

15

am) 63 KR $\frac{45}{64}$ $\frac{1}{2}$ B- $\frac{1}{2}$ " S 2.15 J-2 SW

16

" 64 KR $\frac{45}{72}$ $\frac{1}{2}$ B- $\frac{1}{2}$ " S 2.30 J-2 SE

17

1 65 KR $\frac{45}{72}$ $\frac{1}{2}$ B- $\frac{1}{2}$ " S 3.00 J-2 NE

33

am) 66 KR $\frac{45}{72}$ $\frac{1}{2}$ B- $\frac{1}{2}$ " S 3.00 J-2 NE

Checked
Colophon

Room 5 - sly wall, end of front rd left. Wall seems to follow through rd top (near) by to be bound lower down. Note thickness of front wall.

OK

Room 4, sly wall (transverse to main w/g 2 abuts rear main & front walls. (Pub is tied to end of medial wall).

OK

Nly end, Room 2 - Piers on left - pillar (?) cent. Note banding.

OK

Nly end of medial wall, front (sly) side) Passy, doorway about 1.00 to left of picture frame.

OK

Sly side wall of Room 4 - made up of end wall of palace proper with doorway filled up - note finish of corner stones. Possibly it was as the a? - note subtle slope of the filling wall, both starting at same height

am) 67 KR $\frac{45}{72}$ $\frac{1}{2}$ B- $\frac{1}{2}$ " S 3.00 J-2 NE

OK

Apr 12 66 8 12 $\frac{1}{25}$ " B $\frac{1}{25}$ " Sun. 10.45 S-2 S-2

~~34~~

" 67 9 22 " " " 11.00 S-2 S-E

~~35~~

" 68 10 " " " " S-2 W

~~36~~

" 69 11 22 $\frac{1}{5}$ " B $\frac{1}{5}$ " " S-2 N-E

~~37~~

" 70 12 " " " " S-2 S-W

~~38~~

" 71 K-5 ^{US} 32" 2" B-1 ^{1/2}" Sun. S-2 E

~~39~~

" 72 K-6 ^{US} 32" 6" " " (Same view)

~~40~~

" 73 K-4

~~290~~

~~checked~~ ^{gone to 10,}
^(only better)
Catalpa

Appl right D - only side of doorway S beyond, end
of wall S. of doorway K. Note appearance
of pier behind rule, extended to 1.22 (pier is 1.22)

Same thing through passage doorway in
arched wall, pier ¹¹ in background.

Piers 6 (~~at foreground~~) & 7, background. rule
extended to 2.20, pier is 2.20.

Pier 6 Note "binding" chinking with shells
& small slabs - roughly worked corners.
Pier 7 - large blocks & thick slabs

Nly end & substratum. Note round corner, lower
course only (large slabs) from Benj. (left lower)
to stairway to St. J-7, & ground which the
later is built above, and wall inside
this rises to floor steps - like hand terrace
Ramp hole is ~~on~~ on st. way of St. J
Entire seasonal, Apr. 14, 1933.

Pat. 3
Mont ✓ 74 6' at base of Jhu

48

J-2

Apr 17 ✓ 75 1 56 50

25

Camp

" ✓ 76 2 " "

25

" ✓ 77 3 22 1/2

39

B 1/2" Sun-
W 1/2" and f.d. trees
all on (darker) trees
high shrubs (darker)

J-2 SW

Room 2, pier 13 & corner of "palaster" note "bundling" sly over

Apr 19 ✓ 78 4 22 1"

49

B 1" L.G. - under
W 1/2" hand. open trees 9.00

J-2 N.E

NE end of substructure strung on line of inner sides, front piers of Room 1. Foreground - round corner runs from left, then to be built stairway of J-7, & in front of outer wall rising to outer "step" of series before (end of) building. OK

Checked
C.A.

Room 5 from Room 6 - Eduardo's beyond arch - into vaulted w/ left rise from former outside end of palace - wall of Room 5 overlaps later w/ left fragment.

Moving launch (man Ross) house roof. Note "scissors" of sticks ~~X~~ to support roof as posts OK are cut & beams laid in them

Roof being carried up street by 12 men/beams in holders! Ross carries rest of rope, which was used for cross-bracing while moving.

Ah 20 79 5.22 4' B 4' Sun 2.30 J-2 S/E
 W 3" and trees Room 6

5/

" 18 80 27 " " " " 3.30 "

Ah 21 81 7 22 1/2 B - 1/2 Sun - 4.30 J-2 SW
 W - 3/4 Sheds.

5/

checked as

Nos indicated:

1, 2, 3 - floors 1, 2 + 3

4 - small pits, 11 under 3. #6 discarded.

5 - slabs over drain.

6 - cut rations through waly wall of room

7 - original end of same.

8 - Plinths of original palace, J-2.

9 - Top of large pure rock fill piling under old palace. Tight south (with some mortar) under floor 1 here extends from wall (7) to top of fill (9).

Note: floors 1 & 2 E, tend under swaly wall, both portions (and line of corner stones left side of plate.

In distance, floor 1, cut to floor 3, floor 2 not found there (as yet).

Same, from above + S.

OK

Pit head, inner end of tunnel under passage.
 Note fill wall in background (brick + taboagand etc.
 Jsh that about 2. or. Shoney

OK

Apr 22 ✓ 82 8 22 $\frac{1}{5}$ " $13 \frac{1}{4}$ " Sun (dark) 10.45 S-2 NW
 52/

" ✓ 83 9 " " " " S-2 NW
 19/

" ✓ 84 10 22 $\frac{1}{10}$ " $13 \frac{1}{10}$ " Sun (shaded) 10.45 S-2 E
 20/

" ✓ 85 " 22 4" B 4" (over) timber 11.15 S-5 N
 65/

" ✓ 86 12 22 $\frac{1}{5}$ " $13 \frac{1}{4}$ " Sun (shaded) 2.45 S-2 S
 40/

✓ 87 1 22 1" B $\frac{1}{2}$ " S. Misty 7.15 K-6-a+b SW
 169/

checked
 Catalogued

Wall base of doorway K - note old pier OK
 incorporated in wall. (width: 1.20 same as others.)

Junction of old palace with new Room 6 at right - but OK
 plinth of latter carries over former. Slightly under
 shadow desired

Outer wall + plinth of Room 5; junction with OK
 side wall of stair, S-5.

Vaults of Burial's. Slightly corner, with heads to SE,
 a hand end of vaulting - fill behind. OVER

Pier 12 - note comparative absence of tiny blocks -
 they appear on the opp. corner. - 1.0 size is not
 absolutely consistent. Chipping marks here. But the
 second stone is 1, broken. 1.2 1.2 3 are good but OK
 ones, probably "bound".

W. group, well covered before excavation; small
 humbs between mounds as per superficial OK
 digging in 1932.

4/26 88 2 7L $\frac{1}{2}$ " B $\frac{1}{2}$ " 5 in wide
light wood
darkish
stems. 1.30 K-6-a SW

172

" 89 K-8 ⁴⁵/₃₂ 2" B $\frac{1}{2}$ "⁵/₂" L.C. - 3.00 J-2 NE

67

" 90 K-9 ⁴⁵/₃₂ 3" B $\frac{1}{2}$ "⁵/₂" L.C.
under
light
wood
shard 3.15 J-6
Room 3
+
S-7-
stage S

68

" 91 K-10 ⁴⁵/₃₂ 2" B $\frac{1}{2}$ " L.C. 3.30 " S

69

" 92 K-11 ⁴⁵/₃₂ $\frac{1}{2}$ " B $\frac{1}{2}$ " C (rock
chip) 4.00 S-6 SE

70

checked

C/O

C/O section (center) - left of mound
w/loping photo; back rests on floor running
under car floor level \pm . - Fine layer of
medium fill - homogeneous - no signs of
loose floor left - a mass of stem wood for
outer walls and base. OK

Substructure, NE end - not round cone, from stage
side wall (left) to F7 stage (right) old seems to
be continuous with a stepped wall (has in
place and to head of stage) OK

Room 3 - in trench. Not lined up left
of room ~~left~~ of dumb pile. OK

Same as 90, from tower

Badly over -
must have left
stop ops in

Room 3 - in trench of tunnel - not masonry
Work irregular stems. OK

4/27 93 ✓ 3 22 1/2" B 1/2" Sun 10.00 J-6 SV

" 94 ✓ 4 22 1/2" B 1/2" Sun 10.10 J-6 SV

" 95 ✓ 5 22 1/2" B 1/2" Sun 10.18 J-6 NE

" 96 ✓ 6 22 1/2" B 1/2" S 10.45 J-6 NE

97 R-1 (also shutter in time) Sun 1.55 J-6 S
 K-2 1/2" B 1/2" W 1/2" Right side

" 98 ✓ 7 22 2" B 2" Sun 2.45 J-7 S
 B 1 1/2" (Huss)

Checked
 Cephalopod

End (NCP) of Room 3 - water remains from ceiling
 (3 ways - "slot" - probably accidental.) OK

End of free front wall (ly/D) - contains corner of
 pier (right). Slot @ 1.02 (th. of pier front to
 rear) .95 OK

Piers on either side of central doorway,
 Room 3 (in view corners - slot @ 1.22. OK

Room 3 - nely pier & floor wall - missing OK

J-6 end of ly/D - shows Room 1, 2 & 3. Grass OK
 They stacking center; stay to S-7 beyond
 bridge to Jump tower. over

Corner (NE) - on high but fixed plinth (trace of hand on
 traces of plaster on latter). Plinth has the angle of
 pencil - but latter more crushed corner to do
 eye. Apparently a staining (2 steps below the
 plinth level & floor descended toward camera. OK

110
 ✓
 100 9 22 1" 1 3/4" Sun
 Sheds 3.15 5-6 S

74
 " 100 9 22 1" 1 3/4" Sun
 Sheds 3.25 5-6 SC
 5-7

111
 ✓
 101 10 22 1 1/2" 1 3/4" S.
 9.45 5-6

112
 ✓
 102 11 22 1 1/2" 1 3/4" S.
 Sheds 2.30 5-6

21
 ✓
 103 K-3 32 2" 1 1/2" S.
 Sheds 3.30 5-2

113
 ✓
 104 12 22 1 1/2" 1 3/4" S.
 Sheds 1.40 M.S.S. 9

175
 ✓
 105 11 " 1 1/2" S.
 Sheds 1.45 "

176
 ✓
 106 12 " 1 1/2" S.
 Sheds 1.50 "

checked
 Colatoyne

Recessed wall, end section, Room 3 - behind
 central doorway

Study 3-7 main to rt, against 5-6: rt. wall
 of latter, b/d foreground (end of bench which
 had a narrow terrace in front of it)
 probably low - not small pile of things
 for check - or was this a volutaria? OK

114
 ✓
 Entrance to adjacent tunnel - part of 11 behind -
 mortar + stone above. (plenty of small mortar
 with medium - quite loose. OK)

115
 ✓
 Room 2 - N. S. by partition wall - not definitely by
 roots. OK

116
 ✓
 Grand staircase, NE side - note stones simple steps
 (volutaria destroyed? - 1/2 to bottom. OK)

117
 ✓
 Best preserved (end) - ending + Kolan (?) OK

118
 ✓
 Long edge (ca 1 m) declared - 11 above 15 (Mac?) OK
 there = how high sand
 method in description "

May 3 ✓
 115 K-6 ^{Dus} 32 $\frac{1}{3}$ " B- $\frac{1}{4}$ "
 W- $\frac{2}{3}$ " S.L.C. 10.30 J-6 + NE

" 116 K-7 " " " " 10.70 J-6 SE

" 117 10 22 $\frac{1}{10}$ " B $\frac{1}{10}$ " S.L.C. 10.50 J-6 NE

" 118 11 22 $\frac{1}{10}$ " " " 10.55 J-6 NE
 J-9

" 119 12 22 $\frac{1}{5}$ " B $\frac{1}{5}$ " " 11.00 J-2 NW

" 120 1 8 $\frac{2}{60}$ 65 " Under
 J-6

May 4 ✓
 121 2 22 1" B 1"
 W $\frac{3}{4}$ " S.L.C. 10.16 J-6 -
 Room 3 NE

checked

OK

From tower on dump - Room 1.

OK

" " " " " - bench marks
 in J-7 which tunnels under upper tunnel
 mouth. (not)

OK

Stair way, from tower on dump

OK

- showing J-9 above & behind (SE corner)

OK

From same point as #118.

OK

Tunnel showing floor following under
 terrace in front of floor of hard holes - over
 Arnoldo Aguirre, Cepitas, digger of bad
 tunnel pits at limit & points to 196 film
 hard hole. (11.16 n2 @ f16. notes)

Terace wall immovably behind rear wall
 of room 3 - rough plaster in position
 noted

OK

May 4	120	K-4	US 32	1 1/2"	B 5/8"	S.L.C.	10/30	J-6 + NE	
	81	22	K-5	"	"	"	"	J-6 - 2nd	
	82	3	K-8	US 32	"	"	"	J-6 + 3-6-2nd	
	83	124	B 22	"	"	"	"	J-6 + 3-6-2nd	
	113	4	22	1/10"	B-1/8"	S.L.C.	11/15	J-6 N	
		5	(descended 4)						
	132	22	10"	B-7/8"	S.L.C.	270	J-6 - Room 3	NE	
		(descended room 4) #7)							

Checked
Collected

Remains from tower in Room 2. OK

From Prof. - was any of Room 2 or 3 near wall - lower in court. OK

Room 2 - Missing of wall. OK
- lower in court

Outside details SW end, from tower no ~~counts found~~ in court. OK

End of pie wall (i.e. doorway - steps to room 1) at right. OK
1 left due for 4? yes.

Second rounded terra encountered in upper ~~land~~ tunnel. - Day laid thick slabs + good blocks. - no surface plaster. Arbitrarily line marking some (10 left). Stones are not especially large - slabs especially not long. OK

Nov 4 (127) 8 22 $\frac{1}{2}$ " $1\frac{1}{2}$ " S.L.C. 1045 J-6 N.E.
Room 2.

11 128 9 22 $\frac{1}{2}$ " $1\frac{1}{2}$ " " 3.0 J-6 S
Room 2

" 129 10 22 $\frac{1}{2}$ " $1\frac{1}{2}$ " " 3.15 J-6 SW
Room 2

" 130 11 " " " " 3.20 J-6 SW
Room 4

" 131 12 " " " " 3.3 J-6 SW
Room 3

" 5 132 1 22 15" B" S.L.C. 1048 J-6 SW
Room 3

~~Checked~~
~~collected~~
MISSING
RETAKE

Traversed wall separating rooms 1 + 2. ~~pic taken~~
left. - from Room 2. Note would ~~not~~
through, so does pier. (Same as other ~~pic~~).

Particular wall between Rooms 2 + 3 - note ~~OK~~
would appear to carry through here (see
when below spring) but walls are
tied

Some wall & pier from Room 2 - bench nearby ~~OK~~
all removed (remains id 1/4 ft). Note photos in pier
N side pier of Room 3.

Two piers before north of Room 3 - the
only one (background) fallen. ~~OK~~

When tunnel - pure, loose small fill behind ~~Brick~~
2nd inner ^(i.e. 1st dry) wall & vs original ~~good~~
sidewall of latter (see standing at left.) ~~stop~~
No order of outline of the 2nd line. ~~open~~

May 5	133	2	22	1 1/10"	B to	Sluc	1130	S-Br	S
	118							5-6 2nd	
	179	3	22	1/5"					
	180	4	22	1/5" (?)					
	181	5	22	1/5"					
May 6	151	6	22	1"	B 1/2" W 1/2"	S, L.C.	900	J-2 Room 6	SE
	41								
"	138	7	22	1/2"	B 1/2"	S, L.C.	1020	J-2 on 5-6	
	59								
"	139	8	22	1"	B 1"	S, L.C.		S-L+ 7- under.	SE
	134								

Checked
Categorized

End of J-6 near wall Room I - sun
view as #2s, g. vide. OK

W group date - dry } main insubst. OK
M.S.S. #9 wet } under

" " - ending of Katakun glyf around under

Cut section through drain. (see drawing).
Rule on lowest floor (floor ③) on drawings. OK

Slab from building debris, found J - mixed
spiral design. OK



Broken end of wall which carries down turned.
(crossed out) - lower foreground drain below OK
Its level - Katakun fill under the wall (big + small
stone (including blocks) + light. This floor
runs under wall (small stone + gray earth)
Number is in position of wall stone of drain
remained - Rule stands on bottom of drain

140 9 22 2" 132" S, L.C. 11.5 I-7- NW.
under:

135

141 10 22 1/2 137" S, L.C. 11.25 " 8 W.

136

checked

AD

NW corner of house of 19 1/2 1932 trench - not worked corners. No rest in outer floor, partly a OK
plinth - this is cut (as noted) to show bottom of house wall. Foreground, below, drawn with ruler on bottom, same position as in picture #139. Taken from top of wall which runs under tunnel (red). No. 139 in photo should be 140.

2nd hammer head of 1932 - proposed - under rest in pit (cut out) near to foundation wall bottom, OK
level of concrete floor (top) - thin wall, plaster rises to "plinth" on which is number; this reflects to bottom of inner wall and visible behind the "plinth wall" is broken edge of floor of the "house" which runs back (lower than "plinth level" to sea wall corner, so to inner side of sea wall of house (stones with either side, & white streaking wall plaster, cut, between them. 3 general levels of fill of 5-7 visible behind all - this the lowest high layer on that plaster floor of "middle" plinth of the tunnel, here

90/142 - No inserted after 121									
May 7	143	11	22	$\frac{1}{5}$	BW $\frac{1}{8}$	S, L.S.	330	Sherts,	
	60/							5-2	
								P.F.	
"	8	144	12	"	"	"	"	"	"
"	9	145	1	22	8" B8"	Sum of Tunnel, 10, 8	477 in.	5-6	Tunnel
May 10	146	2	22	$\frac{1}{5}$	B $\frac{1}{5}$ "	S. v.l.c.	1100	5-6	Room 3 SE
"	147	3	22	$\frac{1}{2}$ "	B $\frac{1}{2}$ "	"	1100	5-6-24	NE

~~Checkbook~~
Catalogued

Lower by the height of tenaces.

W-2-58

OK -
color don't show
well.

W-2-58 + W-2-59

OK.

Rough standing face of heavy slabs + blocks, OK
4.30 behind Room 3 near wall.

NE end of outer wall: nat. tenaces (about 50. high) ^{slightly}
built inside of 5-4 (Pyramid) + vs 5-6 wall, up ^{over}
under medial cornice slot, which shows broken
+ slightly out of place. irregular stones in masonry
of Room 3.

Vertical partition wall mostly ripped out, showing
heavy blocks plus slabs, laid in plenty of mortar.
Fair amount of cherting. Full bed of - median ^{OK}
irregular stones, with scattering deposits of
poor mortar - many spots open, but surely
some mortar was dashed here and there.
Pockets white plaster at base to ~~with~~ main walls

May 10 148 4 22 $\frac{1}{10}$ $\frac{1}{10}$ " S. 1120 I-6
Room 1 NE

283

" 149 5 22 $\frac{1}{5}$ $\frac{1}{3}$ " " " " SE

283

" 150 6 22 $\frac{1}{5}$ $\frac{1}{3}$ " " 1130 I-6
Room 1 N

114

" 151 7 22 $\frac{1}{5}$ $\frac{1}{3}$ " " 1140 " S

120

" 153 8 " " " " 1145 I-6,
Room 2 NE

914

" 153 9 22 $\frac{1}{10}$ $\frac{1}{10}$ "

283

10+11 - Personal photos. $\frac{1}{50}$ P 5.6.; 2 PM.

" 154 12 5.6 $\frac{1}{25}$ 2 PM

284

Checked
Cats

Theme I. mch, bench clear out -
masonry

OK

Posharing large sample slab, mch side
which caused the side opened (compare with
other side, when corresponding slab is
still in position.)

OK

Pier at SW side of NE by doorway, Room 2 - rear
corner. Note slab masonry (Striped by reversing
shd 2)

Retaken - See of r. #160

over

Some hair, opp. direction, & 1/4 m low ev, on
main stairway.

OK

Pier & parallel wall, S.W. end of Room 2. Note its
secondary character - pier falling out. Pier +
would carry through

OK

Armadillo - size of small dog - dug out of hole
in South group, killed for food by man.

OK

Mexican bank of river from Wagon Buttes - over
Sollent house.

over
2. similar

May 11 155 I 22 1" B1" S±
 2 1/2" : : TRES. 7.30 R-5-3 L-

✓ 156 5 22 1/2" 1 1/2" S and
 here. 7.10 R-3 NB

✓ 157 B 22 1" 1 1/2" S and
 here. R-3 NB

✓ 158 4 22 1/2" 1 1/2" S and
 here. J-2 NE

checked

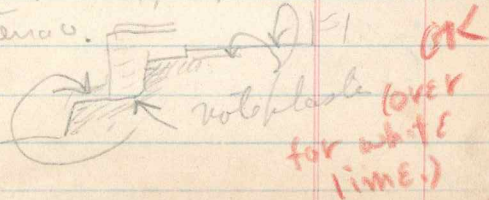
Cao

NE outer corner. Note large heavy silt blocks OK
 "Attobury" of very thick mortar between
 stones (into crushed stone in 1. and OVER
 chunking. Probably a collapse of plaster,
 partly removed, leave it. (See small fill
 behind its stone. Large piece fill below.

Begin of trench to front stairway. Note
 that layer of small stones & earth (remains of
 mortar?) on piece fill, but with traces of
 mortar here & there in the latter. all slips
 in outer layers. The whole is plaster
 floor remaining under. Rule is at inner
 "corner" of trench. R-1 NB

Front stairway - mostly cleared, trench entering OK

End section through north pier, Room I - top
 follows found trench.



May 11 159 6 22 $\frac{1}{5}$ 2 ^{high} S. 11.40. 3-2 S.

" 160 7 " " " " " "

" X 8 No 150 KETAKEM

" 12 161 9 22 $\frac{1}{2}$ 13 $\frac{1}{2}$ S 10.50 K-6-b W
and
TAKEM

" 162 10 " " " " 11.30 K-6-a SE

checked Ad
Facade SW of Room 5. Lower foreground, OK
low terraces, with balustrades staining to
their right - rising to espalade in
front of 5-2, which is torn away to
reveal (left quarter) top of terraced
battered wall (old terrace or pyramid?).
Note behind this a big pier forming part
of the vertical wall. Note Break in
Plinth at end of old original palace
crypt in photo. Also exit (addressed
at least) of drain from Court 1.

Same, vertical ~~new~~ plinth OK

Angle formed by late terrace (?) addition, SW side.
note masonry. Some good blocks. OK

Corresponding angle of K-6-a. Note smaller
stone in original wall. OK

May 183 11 22 $\frac{1}{10}$ " B 70" S. 1.45 K-6

152

" 164 12 " " " S. 1.50 "

153

May 183 165 K-1 $\frac{1}{32}$ " 2" B 2" L.C. 7.30 S-2 N9
end

54

" 166 K-2 $\frac{1}{32}$ " $1\frac{1}{2}$ " S 8.30 K-6 a SW
+ b.

165

" 167 1 22 $\frac{1}{2}$ " B $\frac{1}{2}$ " S 8.35 K-6 b SW

166

" 168 2 22 1" B 1" L.C. 8.40 K-6-a "

167

Checked
Catalogued

Central panel fragments - in shadow. See in plank frame. OK

But the
1 ht. less

above stone, in frame, from rear: oblique
M.S.S. stone #9 - upper surface. Puler lies
on long sculptured edge. Pt. edge worked
& probably unbroken part of bottom edge.
Note curved cornered left. OK
retaken -
stone no.

Showing bolted round-corner lens on
prepared with walls blood against it.
At right-angled corner of 5-7, no side of
slanting out set. OK

after cleaning, with secondary round end
additions in place. OK
(sky?)

Same bound as tower as #166, same time. OK

Scaly end, K-6-a - part of alby upright. Note the
renewed top - which has been hand-cleaned
(vegetation) only. OK

May 13 ✓ 169 K-3, 22, 1/2" B 1/2" Sun 12 K-6-b —

184-a

" 14 ✓ 170.3 22 1" B 1/2" Sun 3.0 K-6-b

185

✓ " ✓ X 4 22 7/10" A 1/10" " 3.0

" 15 ✓ 171 K-9 22 1" B 1" Sun 9.30 K-6-b NW

165-a

Retaken - OK

" 172 ✓ K-10 " " " 9.45 K-6-a SW

169-a

Retaken - OK

Choked

M.S.S. #10 (Ball Court Panel) - Sun at class angle, stone wet. OK

M.S.S. #10, set in frame; with tracing paper skeleton + cuttings made. Note frame to lead paper at left - get smoother sheet & less trouble in end. Paper attached with ad tape, wet & allowed to dry. RO, cutted with soft pencil only RO - with pencil red crayon, gone over with black pencil. Both with photograph as guide.

Slip over

#16 of. taken over. OK

From about center of K-6-a - same top end on top of mound, about original top floor level. Retake OK

Same as #166, after removing all but bottom of additions. at right, note observed heights of K-6-b caused by removal of outer shell of the original wall. Retake OK

173 K-12-22 R-3 N

174-95 22 $\frac{1}{2}$ " $1\frac{1}{4}$ " S $1\frac{1}{4}$ R-3 "

173 K-1 US 32 $\frac{1}{2}$ " $1\frac{1}{2}$ " S. c. 1100 R-3

179-a
+ b
↑ over

174-86 22 $\frac{1}{2}$ " $1\frac{1}{4}$ " S $1\frac{1}{4}$ R-3 SW

175 7 " " R-3 SE

to be taken over (1/2 half block.)

Retaken
See below
OK - but
- must

Center tends to pyramid walls behind
stairs way. Note thick black-like slabs.
They are roughly aligned by "stepped"

Taken over: Trench at center shows same as
#174, plus 'substructure' on right. Ruler on zero
floor, beams vs first terrace.

Right found corner, from left rear. Ruler stands on
stone same level as rear line - 11.8-10 above earl
floor. Note remains of late floor on it. Also that
found wall appears to be only about the front
half of this hump. Middle "pier" at left.

Middle "pier" is stone in line, same level as
rear line, finish with those in #174, as
left. It cannot be between line of stones, but lanes
(probably upper corner rubbed off) - they are in line with
band of building.

May 18 ✓
 176 8 22 1" 1 1/2" 15 7.30 R-3 NE

203

" 177 R-2 3 1/2" 1/2" B 1/2 W 1/3 L.C. 8.50 R-3 Plaster found corner

203

178 ✓ 9 22 1/5" 1 1/2" 3 1/2" 8.45 R-3

221

179 ✓ 10 " " " " L.C. 8.50 R-3 found

204

222

180 ✓ 11 " " " " " " 11.1 R-3

check ~~ap~~

Center trench: and wall over 3rd terrace removed, showing basement, same day as above below, which may connect with them (it follows same, but can't say is yet). Above, the part of R-3 terrace resting a couple of floors, supported by gill lying on plaster floor which connected with the basement, the top course being missing (or possibly connected by a step).

OK

in terrace - upper structure - note subtraction - hand line etc.

OK

Some showing trench to the upper level. Note where plaster ceases (old wall removed).

Head of trench: top to bottom: upper foundation (R-3) - ground wall - founded on old floor: in tight block (2) fill) on another floor, with finishing plaster at head. - here level of latter.

OK

The inner edge of plaster on above floor - shows behind - indicating frame found wall.

OK

May 18 181 12 22

185

K-6-b
(M.S.S.#10
drawing.)

" 19 182 1 22 $\frac{1}{10}$ "

205

$B\frac{1}{16}$ " S 11:30 R-3 +
R-3-2nd

" 20 183 2 22 1"

238

B" SE 7:00 R-5

Choked
Catalog

Photo of museum tracing, M.S.S.#10. This is coincidental. ^{scribbles} Differs slightly from tracing, which should not ^{OK} be followed.

And Cochran through center of R-3. No 3 is on front tena (ol?) wall, which was found under ^{OK} or (vision to front, now removed (at center at least). No 2 is at rear line of stones, on the well defined finishing plaster floor. No 4 is on 2 wly stone of the sub base of piers. No 4 on floor of R-3-2nd, at base of fill for R-3, which is loose at top, tight at bottom. No concrete under piers + wall at right - over R-3-2nd, but extending back only about 1.00.

stone head in position. Wood ruler lie on stone ^{OK} fill. No 1 is on a fragment of plaster floor in position. Head is in the floor.

✓
 194
 No. 20 184 > 22 $\frac{1}{2}$ " $13\frac{1}{8}$ " L.C. 9.10 R-1 front

✓
 195
 185 4 22 2" $13\frac{1}{2}$ " L.C. 9.30 R-1

✓
 200
 No. 21 186 5" $13\frac{1}{2}$ "
 6" *Queen-Parris*

✓
 202
 22 187 7 2.5 $\frac{1}{50}$ "

R-3

checked ad

with
 No. 1 is at hard corner of doorway, No. 2 at rear corner, both the right side of porch right (rather than central) doorway facing same way as building. No. 3 is on the same line, at floor level + at bottom of cut (.50 below surface). Note small slabs, with remains of mortar intermixed - but too small to see for working, except with larger ones, which are obscure - also too few. Section is .30 behind hard wall. // with front of building & cuts highest part of mound. see later, No.

NEly s. side of trench: ramp hole is at inner corner of doorway: No. 1 is at above floor level, under on OK bottom of trench. Note the slabs, but crushed stone - but absence of many slabs, and no piece of working intact. Crushed stone is scarce in archaic vaults.

Parris, Fred P. architect.

Tower-looking dam or trench through stonewall
 (see notes of R-3 2nd + 3rd, Bay cleaning and repairing cuttings and focus on mound OK)

1822 188 8 2 1/2" R-3 S 1080 R-3 (E) (V) ✓

216

189 9-22 2" R-1/2 S 1100 R-11-a near ✓

260

23 190 10 22 1/2" R-1/4 S 1130 R-5 ✓

236

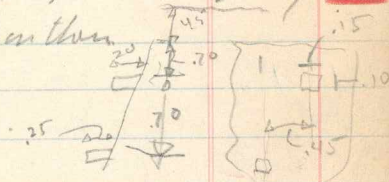
191 11 22 2" R-1 S 1145 R-5 ✓

237

Checked
Out of record

been drawing subsidiary tenae on recent tenae, correspondingly with 12 with which 20 is continuous - exposed by removal of upper wall of R-1. Third tenae is minor one 2 courses - belongs with floor of R-3 - 31. Reemination above base fill. Rocks on it are being thrown out. ✓

15' rear wall, apparently dry - and projecting ✓
5' over (Nos 1 & 2 read on them)



Section cut through debris on line through center of rt doorway. Rear wall at left. Slabs from dig lie on surface. Note on rd right, with surface plaster rd angle to slab. ✓

Cross-section on line of left side of left doorway. (See corner of rear + front doorways - ruler starts slightly below floor level. Nos 1 2 + 3 are large worked slabs. Note slabs + mortar. ✓

266
 M 23 192 K-3 ^{us} 32 1" B 1/2 of Sun 130 Bin #10 S/E

267
 193 12 22 1/2" B 1/2" Cl. P. 20 11 NG

268
 29 194 1 R1

269
 195 2 R1

270
 197 3 22 4" 4 or 2 L.C. 11 R-5

271
 197 4 2 " " " 4 S. West

272
 198 5 " 1" (±) " " 11:30 "

273
 199 6 " 2" " " "

274
 200 7 " 1/2" B 2nd Sun

275
 8 - blank

276
 201 9 - 22 1/2" B 2nd Sun 11:45 P-5 - 1/2" head

Checked
 Catalogued

#1 - shell fragments, ^{shell} small head, #2 small jade base
 #3 - shell, jade beads; #4 jade beads #5 - large
 jade head; #6 - jade beads - all above OK
 same level, 19 between head of bottom south
 side. Note for blackness across in center, toward
 S.W. side - 1/2 in. - shell + plate in an
 all right, other are cleaned - from
 + above. - with 10 strands. 0.0. and ←

Same ins as above, from end, on surface OK

Note of head and fallen wall (a corner) OK
 as there occurred only on the side.
 head found as left - with 10 strands OK
 of column.

5. lower head of ins were less 5.95 from rearward OK
 point. OK

" without respect as left. OK
 sly under

Right Profits OK

<u>244</u>	202	10	22	4"	B1508"	LC	R ₂₃	R-5-6	R-6 ft. Sun
<u>245</u>	203	11	"	8"	"	"	"	"	head.
<u>246</u>	204	2	"	4"	B8"		R45		
<u>247</u>	205	I	"	2"	B1508"	"	230	"	"
<u>248</u>	206	2	"	1"	"	S ₁₁	2.3	"	"
<u>249</u>	207	3	"	4"	B1508"	LC	24	"	"

29 208 4 22 15" 3 30" L.C. R₂₀ R-3-32-4 vnd.
223

209 5 22 1/2" B1 1/2" S R₂₀ R-4 E
233

210 22 1" B1" A R-5 N
234

(6 are)
 8 (5 are) (191 retaken, 8 v.)

211 9 22 1" 1/2" S 100 R-5
 (no found down)

Checked
Colony

1/10 Profile

"

3/4 view

"

"

" , from slightly above, with prominent unfilled fragments.

Fill under floor of R-5-34 - pure earth with packets of iron mortar (had 2 or 3 meters only. This may be behind a fill wall, to be ascertained later down.

5 rows column of left room, original level with bricks. See plan & section. OK

Center pier, ad doorway + swly wall. OK

← OK

Rear wall - off-center room door 20 m/18
 wall corner or end of room 20 m/18

OK

OK

OK
 (2/3 view)
OK

OK
 See under
OK

OK

OK
 See Jones
OK

June 1 ²¹² ~~210~~ 22 8" B 15" ^{pull} cloud 4 4/10 S-2 -
sticks
fragments.

June 1 ²¹³ 11 22 15" B 15" ^{pull} 4/15 S-2 -
sticks.

June 2 ²¹⁴ 12 22 2" B 2" L.e. 1/4 R-9 <sup>Five or
six found
common</sup>

²¹⁵ 1 22 4" B 4" L.e. 1/2 R-9 <sup>found
rare</sup>
no time to retake.

" ²¹⁶ 2 " " " R-9 <sup>20 sides
found
near</sup>

**Checked
Catalogued**

Top row, L to R: ^{W-2-44} W-2-44; ^{W-2-44} W-2-44; ^{W-2-44} W-2-44
Bottom, W-2-44; W-2-47.

Top row, all are W-2-58; left contains 2 clay
nuttles. Middle - L to R, 10, 15, 3 are W-2-58.
The rest of middle & all bottom row are W-2-59
red fragments.

Foreground, right side - beyond, stone col. in position ^{OK}
as found (occupy hole behind it). Water slide is ^{light}
at floor level between pairs (of just behind them)
extended to .62 (at low range surface).

Foreground left of evidence wall is t. piece cloth ^{OVER}
behind it, with hole, which is at surface (same level
as top of pair. Hole at .62. Stone col. in position
at background, with range hole behind it.

Stone column in position as found. Range hole is level
& lies on floor between pairs, running from across
with stone is partly above, partly below floor level.

**Fair
(large)**

227	6	22				R-5
228	7	22				slued wood
253						
224	5	22	^{W-7} 4'2"	4'	Dull 10w	R-3-31 <small>from head W.</small>
	9	22	1/5"	1 1/5"	L.C.	3.30 J-6
	10	"	"	"	Su.	4.20 "
	11	same				
	12					4.45 J-6 + R-16

~~Checked~~
Calculated

Stucco/terracotta from above OK - sly
" " OK sly OK tho

Rough Block wall. Ruler on level of center (floor?) of R-3-4th. wall begins about 1.50 above 7. OK
No floor area. 10 m to 100. Stone. Card in insufficient amount of water, rain so/s (wet).

Catch #2 - W-12-15 - ~~15~~ B-1 to B-13. OK
Top row, L. to R. B-11, 13, 4
Middle - the hand belongs with B-6 (p. 1)
3rd Row B-9, B-10, B-2, B-5, B-3
Bottom - B-6 - B-7, B-8, B-1, B-12 red line
L. of B-6, with tip - .163; max width .048 - result 66.5 with brown angle

Top Row Catch #4 W-12-17, L. to R. - B-2, B-1, B-3 OK
OK sly over

Bottom " #3, W-12-16, L. to R. C-1, C-2, C-3, C-4

Left Group Catch #5 J-6 - (W-12-18). Top W-12-8 (s. above)
Bottom W-12-18 D-1, D-4 (up side) D-3 (lower), D-2. OK

Right Group Catch from Str. R-16 (S-18-2 (flint 3)
& S-18-3 (obs. dump) - not talked yet.

254 ✓
 June 234 1 22 $\frac{1}{5}$ " B $\frac{1}{5}$ " L.O. 1000 R-5

255 ✓
 " 235 2 " " " " R-5

226 ✓
 " 236 K-4 432 $\frac{1}{5}$ " B $\frac{1}{5}$ " R-3

206 ✓
 237 K-5 22 " " " " R-3 Nests

207 ✓
 238 K-6 45 $\frac{1}{2}$ " B $\frac{1}{5}$ " L.O. 11/16 R-3

from
 it
 or
 from
 the
 side

208 ✓
 239 K-7 45 $\frac{1}{32}$ " " " 11/35 R-3 Nycena

~~check~~
~~Cholepog~~

Stela (old "alla 6") - on pro s. 1150 - probably
 built at left, which can be factored OK
 Bud from left wing to rear.

Saw stime from ends - end of built
 of "alla 6" - st. - done from left wing at left OK
 Puc in foreground from alla 6.

Antel 11 - signs twice for the relation

Notes 2 no, 3d + more 4 to terrace - showing
 side wall. Aludo in his hand through relation
 (Chulic lens)

relation

relation
 Megalitha showing, could be from pilot for of
 R-2, R-3 + R-4.

✓
 No. 6 240 3 22 $\frac{1}{5}$ " $1\frac{1}{5}$ " Lc $1\frac{1}{4}$ " R-3

209

✓
 241 4 " " " " " "

210

✓
 " 242 K-8 $4\frac{1}{2}$ " $\frac{1}{2}$ " $1\frac{1}{2}$ " Lc $1\frac{1}{4}$ " R-11-a

261-a

261-b

✓
 " 243 5 22 $\frac{1}{2}$ " $\frac{1}{4}$ " S. $1\frac{1}{5}$ " R-3

217

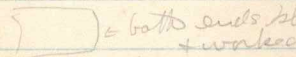
✓
 " 244 6 " $\frac{1}{2}$ " $3\frac{1}{2}$ " Lc $2\frac{1}{4}$ " R-3

218

checked
 Catalogued

Mogalek's Coy - end wall, from NW. - Bed
 as at bottom. OK

So - looking straight down lower slope from
 NW. to show slope & small amount of
 displacement of stone. Camera is level & steady,
 & its lens axis is || with slope. Boy is
 standing evenly. OK

Stela 45.  = both ends slightly rounded
 & worked (beveled nicely).
 Back is smooth & rounded - smoothed at
 top - 2 cracks/plans as usual, no tool marks.
 Note ~~on~~ concave inner part from
 which stone now lies.

Pyramid masonry - 2nd offset from NW end left
 No stone with 1 white & 1 brown face - worked
 (nicely) corner stones at offset. OK

at offset to rd (000 of picture) concrete mortar near
 corner, is about .05 thick. No bits of color.

NE corner - masonry - built of slightly rounded blocks
 (slab - blocks even with
 out chisel) OK

sub 245 7 (blank?) (no) ✓
 8 22 1" 13 1/2" L.C. 1230 R-3
 219
 216

" 246 9 22 1" 13 1/2" S.R. 15 R-3
 219

249 10
 28 6 " 12 1/2" not used

" 7 248 I 22 1 1/2" 13 1/2" S 9.00 R-3 -
 211
 found: m. slugs

" 248 2 22 1 1/2" 13 1/2" S 9.10 R-3
 212

" 250 3 " " " 9.20 R-3
 213

Checked
 COB

Nubby cone of R-3 is 1/2" (round) - exposed wall
 of lower (6?) lens of R-4 in background - is
 follows below our cut (i.e. below 2nd floor
 of plot form) - note plinth effect (panel) +
 heavy moulding above. Main same
 type as R-3.

Same cone, + plain slab —

Parnis & Nicina.

Remains for acade. no similarity of stones
 to J-6, not to J-1.

Left side wall of Slug (NW side) - as hollow
 slab @ 1.02. Camera level.

From tower - 1st + second tenor
 walls
 of Slug, off path
 in shadow

251 4' 22" $\frac{1}{5}$ " R $\frac{3}{8}$ " S 9.25 R-3

254

252 5' 22" 4" B 4" S 9.35 S-4 toward

265

253-6 " " " " 9.45 S-2 "

264

254 7' 22" $\frac{1}{10}$ " L.C. 11.30 B wall 10

255 8' 22" $\frac{1}{10}$ " B $\frac{1}{10}$ " S "

256 9' 22" $\frac{1}{2}$ " " " "

264

257 10' 22" 1" mt" L.C. 11.45 R-3

225

258 11' 22" $\frac{1}{25}$ " B $\frac{1}{25}$ " S 12.45 B wall 10.

272

259 12' " " " " " "

271

checked
code

Wly corner, 1st corner terrace, Blain's lab. Under
looking down from tower. In shadow

Marginal level in place - slope in down behind
OK - eye
in hyperover-
night.

Very poor lighting - rain & dirty Sec plant OK
sectors. "Shrine" ad back - depressed
parrye program.

Cashed flint chips, Neko 3. Note circular form
1st 10 program - a number remaining of type
Sly under

Center bench - and wall just behind 1st terrace wall
enclosed under stairway. OK

Prong flint chips - horizontal view of and ceiling
through surrounding earth + stone remains
In 5' hole

Same flint in, showing any knife in 1st 10 center -
Under to show

260 45 - 2" B 2" S 9.50 Bin #10
 261 22 3" " " " "

268 262 K-9 22 1/3" B 5" S 10.20 Bin #10 Sully
 K-10 236" ^{W 1/2} relocation

269 K-11 22 1" B 11.00 R-3 237" relocation

K-12 - 238 relocation

K-1 231 " (double?) into B# 261

263 269 22 2" B 11.35 R-9

251

K-2 Sled 45 relocation
 #242 relocation

checked
 catalog

Skull, ribs, & bone Descended. over

Fault

Miles 1 (1/2) + 2 (1/2) OK

OK

OK

OK
 OK (double
 but will do)

Oblique line (Sela) about (NW) end of front
 platform - partly under sled at this end (Sela) OK

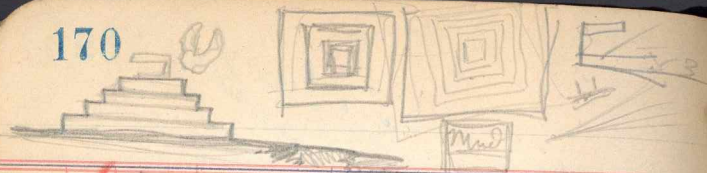
Length - 1.00 + 1.05

Plat. 50 x 40 - 100m on side - hinges of
 covering, but both ends of this side was up.

But end of left is worked as are round sides
 of sleds & do not have hinges of wire
 But probably 40m in length - no sign

(Sela)

OK



Jan 5 264 K3 - 32 - 1/2" B 1/5" S 3.00 Figures to
guide

277

278 265 K4 - 2" Scrup hand

279 266 K5 - 2" " of files

193 267 K6 - 2" - MSS. #9 (shown 2)

Jan 7 268 I 22 3/2" B 1/10" S 9.20 K6-4

175

" 269 2 22 4" B 2" S 9.30 K6-6

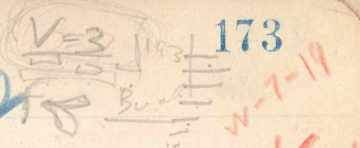
170
171
172

270 3 22 1/5" 1/10" S 9.40 K6-a

271 4 22 1/5" " S 9.40 K6-y

K7 46 32 1 1/2" 6 2" S 7.50 K6-a Sw (in
+ b 100)

checked
add



Profiles

L.R. (W-29-56) (W-29-31) (W-7-16) (W-17-19)
(-24) (W-29-42) (E-50-46) (W-7-12) (S-14-6)

L.R. (W-29-32) (S-14-10) (S-2-33) (W-29-73)
(S-2-20) (W-29-1) (W-2-62)

m.L.G.K. (S-14-7) (S-2-52) (W-17-96)
(-13) (W-29-45) (S-14-14) (W-29-65)

0 of S-14-7 (lower 1/2) is .09.

under
under

and description

OK

near showing remains of secondary addition
near with double wall construction. Both
have been examined from the beds (above) to

under

In corresponding corner of K-6-b the
along with a kind of distinct from corner

and support features as about 268.
found in the same

then slope of K-6-b - looking a little north on
south

22 rotators)

OK - see 172

Aug	x	K-8	$\frac{45}{32}$	$1\frac{1}{2}$ "	B-2	S. 10.00	K-6-6
151	272	K-1	$\frac{45}{16}$	$2\frac{1}{2}$ "	B-2	S 10.50	K-5
153	273	8	22	$2\frac{1}{2}$ "	B-2	Q. 11.00	K-5

227	274	6	22	8"	B-4	11.20	R-3-5
151	275	✓	22	1"	B-2	12.45	5-6

Jan 10	276	Ag. 4	22	1"	B-2	11.20	5-6
--------	-----	-------	----	----	-----	-------	-----

123	277	Ag. 5	21	"	"	"	5-6
155	278	Ag. 6	22	2"	"	"	5-2

153 279 Ag. 7

part 7 again

checked
C

#171 adobe - OK see #171

Part 7 - 2 unsorted fragments
Fragments of part 7 (C) found over SW edge of Fund
slung, about 1.50 / in line with part of
lines of the 2nd mark. - 2 in surface
was slung; ? Found on top of down way, not
right.

Each in bed rock off on K-5.5 - OK
Part 7 in wall behind most south, down
shaving, when of way old masonry - R-2nd
following through, 1.00 behind.

Dividing wall between Rooms 1 + 2 -
2 + 3 -

NE end - sham (old) - behind
dam (broken off) - behind early round corner
which time corner (with plaster) running behind
terrace then (down) then it runs lower behind
later lower terrace. Beyond this, behind
dig over slips, early terrace wall of J-7,
with handles



213	10980	98	72	$\frac{1}{5}$ "	R $\frac{1}{8}$ "	L.C.	Bund 10
		v. 8?					
218	281	9	22	$\frac{1}{5}$ "	R $\frac{1}{8}$ "	L.C. 285	R-3-5 ^{WA}
221	282	10	"	$\frac{1}{10}$ "	"	Sum	"
230	283	11	"	"	"	"	"
231	284	12	"	"	"	"	"
	285	09.9.	22	$\frac{1}{5}$ "	W $\frac{1}{2}$ "		Bund 10.
234	0910	16	1"	$\frac{1}{10}$ "	W 2"	L.C.	11-30 ^{WA} 12-3-5 ^{WA}
		11				4.3	
	286	8 (June)					3-2
275	287	09.2	22	3"	2"	50	Bund 10
276	288	" 2	"	2"	"	"	"
277	289	" 3	"	$\frac{1}{10}$ "	W $\frac{1}{10}$ "	Sum	"
278	290	" 4	"	$\frac{1}{10}$ "	"	"	"
279	291	5	Sum				
154-9	292	6	-overhead	3"			K-5
154-6	"	7	22	2"	B 2"		"
155	293	8	"	$\frac{1}{5}$ "			"
294	294	K2	11572	2"			"

Hand chisels + knives (L.C. S-15-11, St. S-15-12)
 from Niche 3 OK

2 cache bowls - broken sections (S-2-63 L16 (copy)
 -62 - right) OK

" " " - hollows - note make of feet. OK

" " " - from above. OK

" " " - all holes. OK

Jade + shell objects from Bund 10. OK

Cache bowls (284 retaken) double.
 bottoms.

P.W.D section through center wall, 1.50 OK
 south of Sly medial doorway - note
 similar to I-6 wall; bedstones do not
 overlap - thicker wall plenty of mortar

S-15-2 - face face - front OK - no block
 " " - back. OK - hole

Potato from I-2 debris - Main from Survey OK
 " " " - bottom OK

Shred mesh ^{from St. 150} - note OK - better than 2" OK

" " " OK

from to right side of St. 150 OK

" " " OK - sly mesh?

Take again.

Jan 11	295	K-3	US 32	6"	88"	Sin.	11.15.	K-5	Succo mark, fwd, close.
									ok. See under?
Jan 12	296	K-4	US 32	1 1/2"	81"	L.C.	3.15	K-5	Succo mark
	297	K-5	"	1"	"	IS	3.20	K-5	"
	298	Ag. 9	"	22"	1"	"	3.25	K-5	Front
	299	Ag 10	"	22"	1"	"	3.30	K-5	extreme close
	300	Ag 11	"	22"	1"	"	3.35	K-5	close

Remind nos:

285	Stm cell - chipped & hole shot	Choble
289	wall Section. Turbul.	Washed
290	Doorway	Muzas
291	Facade, upper parts	Muzas
292	Roofing	"
293	Group SE of Muzas, down	"
294	Corner, Iglesia	"
295	Eagles - worked slots,	"
296	wall section, Old Church	"

photos to make.

Metals on decap, n. side.
 Succo on LIX
 " on LIV(?) - big piece
 couple of dent holders.
 LI pier.
 Medical warts, piers, XLV, XLVIII,

- Front view from tower.

" - close up

- with Paris working on drawing.

297	San Juan. good view	Sayfen
298	Section Muzas	W. wall
299	" "	"
300	Human da. almost Mag.	"
301	Fallen shell	"
302	Gov. from foot of Mag.	"
303	Fallen mass of facade. Gov.	"
304	Core + Pac. Facade, gov.	"
305	" "	"
306	Colonia. Twitter.	"
	over	

180

307 - Havana - loamy harbor

308

feeding cattle, Chumbeque

309

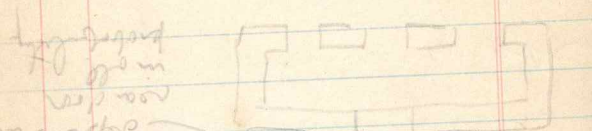
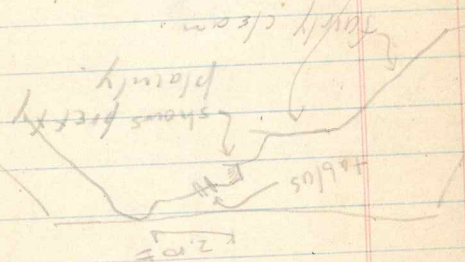
M.C.S.

311 - L.S. 3r.

151

158
154
150
141
137
122
113
104
96

the soil is very dry
Lima must be
fairly clean



4/22/32
S.T. 6 Sugar estate
I saw temple about 3/4
day, but it probably the
central one. I can't get the
a tower (?) or something than
could be Mier's hand charbe
disparan
non den
in all
probably

33-312 - ascending Robins of Anaité

313

314

315 Cayuca + party at Yarechilan

316 Unloading mules, Piedras Negras

317 Small captive iguana (large lizard).

EXPOSURE

Table C.—LENS APERTURES

To avoid confusion, only the stops generally in use are marked on the Calculator disc; the Table below indicates the position of those which are omitted:—

Stops F values	Relative Ex- posures	U.S. Nos.	Positions on Exposure Calculator
f 1.9	1/16	0.25	} as indicated by f/4 divided by four
f 2			
f 2.9	1/8	0.75	} as indicated by f/3
f 3.2			
f 3.5			
f 4	1/4	1	} as indicated by f/6
f 4.5	1/2	1.5	
f 5.6	1/2	2	
f 6			
f 6.3	5/8	2.48	} as indicated by f/7
f 6.8			
f 7	3/4	3	} Between f/8 and f/11
f 8	1	4	
f 9	1 1/4	5	} Between f/11 and f/16
f 10	1 1/2	6.25	
f 11.3	2	8	} Between f/16 and f/22
f 12.5	2 1/2	10	
f 14	3	12.25	
f 16	4	16	} Between f/22 and f/32
f 18	5	20	
f 20	6	25	} Between f/22 and f/32
f 22.6	8	32	
f 25	10	39	
f 28	12	49	
f 32	16	64	

The exposure with any particular stop may be calculated by multiplying the exposure at f/8 (U.S. 4) by the figure in the second column of the Table above.

NOTE.—When necessary to ensure ease in calculating, approximate figures are given.

For lens cameras with stops marked 1, 2, 3, 4, 5, 6, 8, 11, 16, 22, 32, 45, 64, 90, 128, 180, 256, 360, 500, 720, 1000.

Film Values
 Vericrome 1/16
 Par 1/8

Jan 12
 158
 154
 150
 146
 142
 138
 134
 130
 126
 122
 118
 114
 110
 106
 102

3/12
 1/4
 2/5
 5/5

LIGHT TABLES FOR THE TROPICS

The Light Table given below is suitable for use in the Tropics, *i.e.*, between about 20° N. and 20° S. latitude, all the year round.

LOCAL MEAN TIME	Sun shining un- obscured	Sun obscured by light clouds or slight mist	Dull or misty	Very dull
10 a.m. to 2 p.m.	1/12	1/6	1/3	3/4
9 a.m. and 3 p.m.	1/8	1/4	1/2	1
8 a.m. and 4 p.m.	1/6	1/3	3/4	1-1/2
7 a.m. and 5 p.m.	1/4	1/2	1	1 1/2

† These figures must be used with caution. They may safely be doubled from October to February between 10° and 20° North, and from April to August between 10° and 20° South. Unless orthochromatic plates are employed, they must certainly be increased from 5 to 10 times when the light is yellow or

