

Str. K-5 Section. Pencil on tracing paper.

Removed to:

Piedras Negras—

Oversize Plans and Drawings—

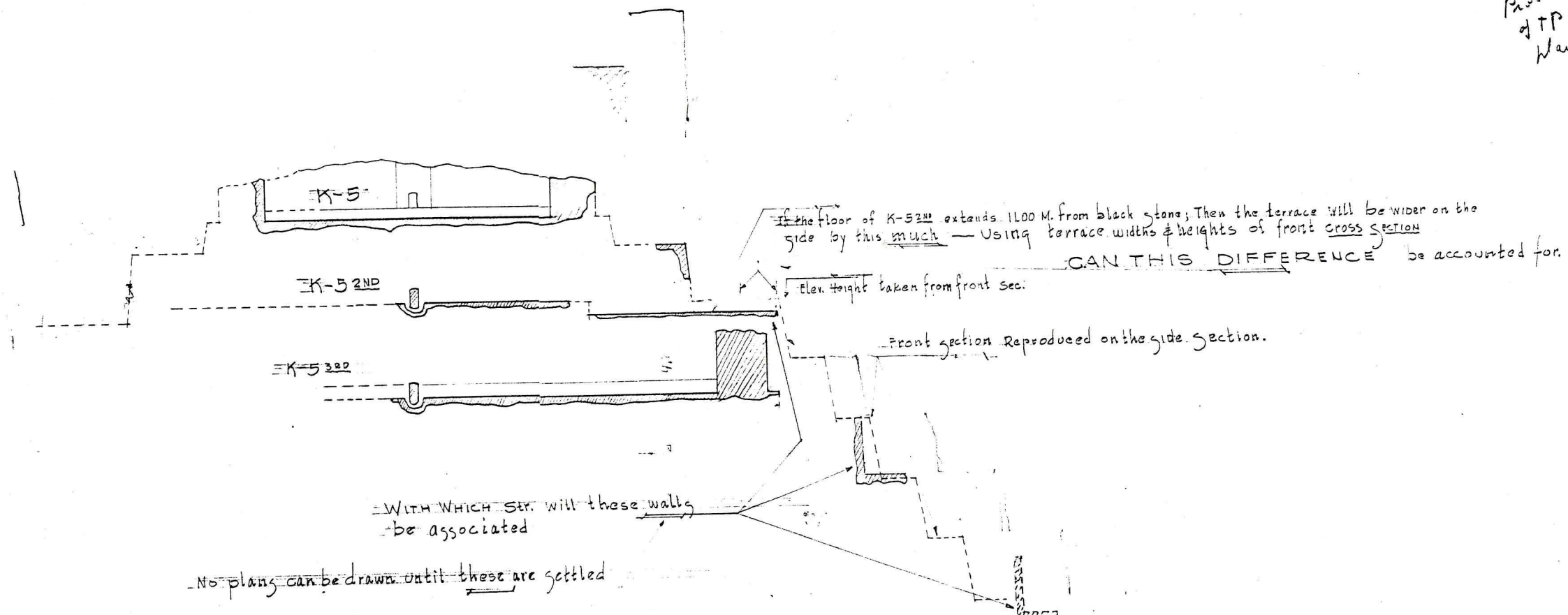
Str. K-5 Sections—

M-61-9

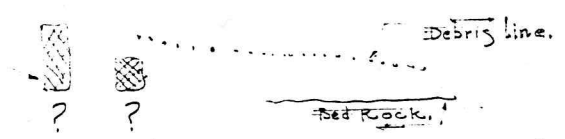
STR. K-5
SECTION

? Paris' overcut

? ?
Probably remains
of TP before showing
Man on the PN map



LONGITUDINAL SECTIONS LOOKING NORTH



Piedras Negras

Notes, lists, etc - Acropolis Periods: Palaces.

(occasionally work-book in writing up P.N. Architecture.)

See also folder of tracings: Acropolis Section.

(summarize drawing to Rands (1973))

" folder - Temples (II no. 1)

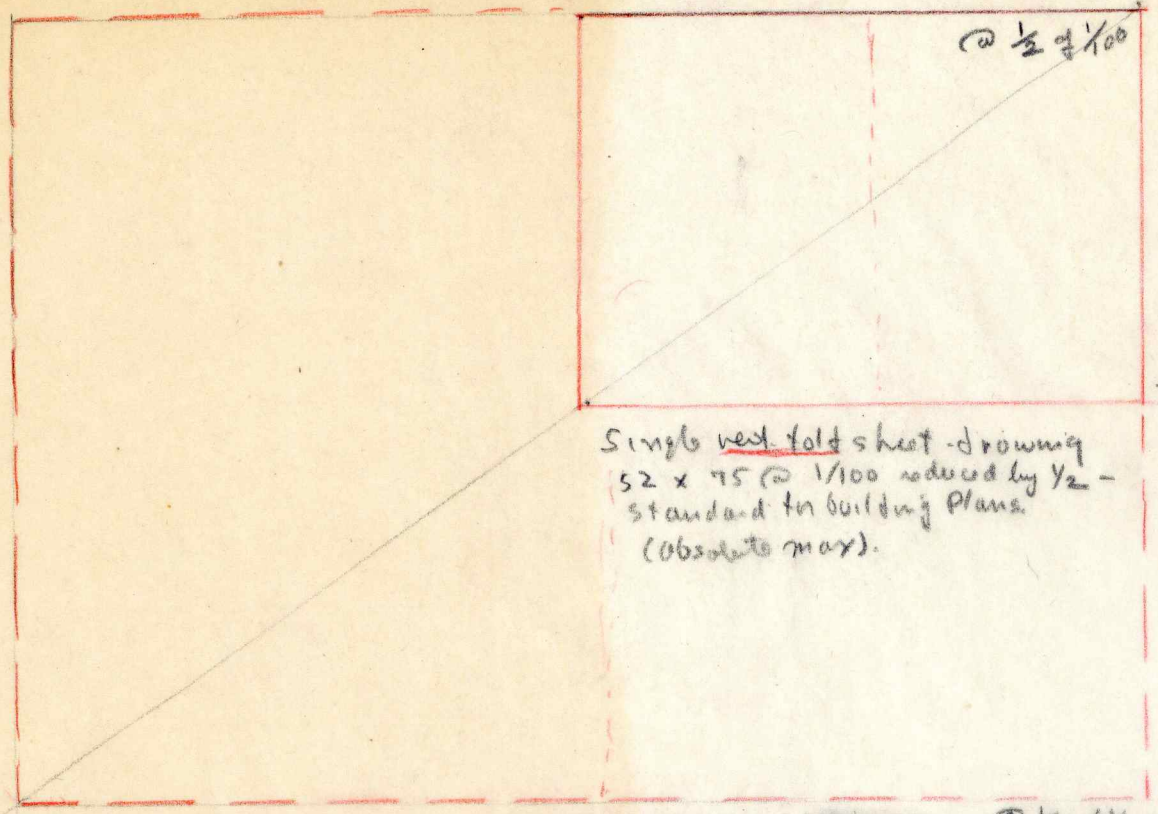
" folder, tracing of K-5 Section (longitudinal).
- Godrey or Proskoviatoff

" Folder, comments on P.N. Arch. publication.

Finding Aids

Drawings
List 5

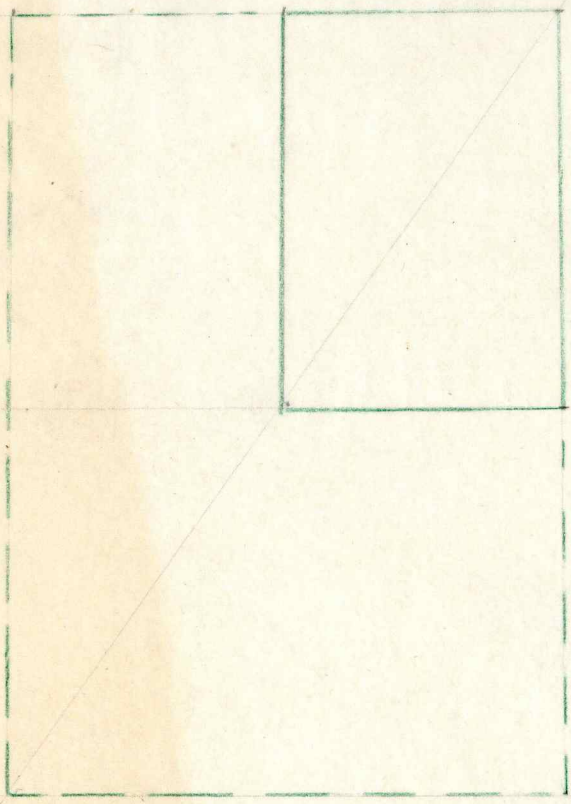
Coverage of Published Map @ 1/1000 (1mm = 1 meter).



@ 1/2 of 1/1000

Single west fold sheet - drawing
52 x 75 @ 1/100 reduced by 1/2 -
standard for building plans.
(absolute max).

@ 1/4 of 1/1000



Reg page. vert. 26, horiz. 18 (max).

Conts
-notes

Oversized item not scanned

Court I Notes
Contents.

- 31-1 Section; Trench through Court I; plan of also.
(Row 5)
- 37-1 Plan; some Section data; - on str "I-Y"
+ old basal terrace; fill wall (in
this fixed Record I
- 37-2 Details "I-Y" + its platform: earliest
Court I floor.
- nd-1
- nd-2 Section thng. 5-6 Rm 1 Stairway;
+ through connecting trends to left.

(See also 5-2 and,
especially, 5-6 + 5-7.

56:37- measurements + levels on
str. Acr. I-X

56nd-37 - Section through
floor

56(59): 33 - Section above tunnel
end, to Str. 9.

56(Tunnel)³³ - Section of Acr IX

56(Rm 3 + Tunnel). 33 -
etc. tunnel

Cont's
Drawings

Oversized item not scanned

Group Drawings: Acropolis Group Drawings

Plans

Parris: AG 1 Court 1. Plans of Strs. See also Plan of I-6 (Parris) + Section - Plan of I-7 set (Satt) + Sections.

Parris: AG 2a Court 2 - superseded by AG 2b

Prosk. AG 2b Court 2 Plans of Strs.

" AG 2c Court 2, Plans of Strs. I-11 + I-13

} See also Prosk. Plan of I-4 + adjacent strs.

Parris. AG 3 Court 3 Plans of Strs.

Sections

Prosk. AG 4 Sections, Courts 1 + 2

Prosk. AG 5 Sections, Courts 1 + 2.

AG

Elevations

oversize drawings

AG 6 (I. Court 1) Elevations: Str. I-4 - with adjacent parts of Strs I-3, I-7, I-8, K/m 3, I-9.

AG 7 " Strs I-2 + I-9. (front).

System 1
use

this sheet does not cover
5-6-2nd level - does for
early main periods, 1933 photos.

photos
Acropolis Sub-Strs.
and Court I
early periods

32-177 - Corner of "House A" = Sub Ac. Str 3.

33- (outer entrance to tunnel)

33-42 Cut Section through Pier 8 - earlier "Terraces" Str 5-2

-44 Trench to tunnel (trench) (Trench 1")

45 Same, later.

46, 47 left (NE) end of 5-2 (47 is same).

49 " "

51 Pit, tegomy - f. A wall.

53 left (NE) end of 5-2

54 - similar.

55 left (NE) end of 5-2

60 slabs, 5-2 Court I Pit (to quot)

61 "

63 "

System 2 { 68
69 } - even views showing 5-7 - R'm 3 trenches + tunnel.
70
72

- 73a - even view, show "trench 3" - neg. string.

- 80 - " " " " "Trench 4" (right end, 5-6-2nd).

- 84 - " " " " "Trench 2b" (upper level, below R'm 3 of 5-6)

89 - right end of 5-6 - before cutting Trench 4

95 - end of 5-6. P2' wall

33-100 - Trench 4 (right end of 5-6)

107 - ~~end~~ Trench 4 - earlier wolo (H. 11?)

110 - Trench 2b (upper level) - + Sect. through R'm 3 room wall.

111 - " looking in

104+118 - 5-6 + 5-6.2nd relations

124 - Trench 2c (lower, leading to Trench 1) - shows tenues

125 - same, class-ups

126 same system, class-ups

127

128

129 Masonry, Str. 3; kind of sect. through Str. 4 (cp. 35-19)

130

131

132

133

134

135

136

137

Trench - Trench 2 system

35-12 } - Trench 26 (upper)
35-13 }

5472

35-14 - gen view, No 2 system structure

15 "

16 "

System 2

17 " Profile head angle view

18 "

19 - Detail.

21 - " (Masonry)
22 - " (Masonry)
23 - " (Masonry) } same wall

20 Semi-genl view - shows end of mod. wall, Acr Sub-6

26 - " end of mod wall Acr Sub-6

27 - plaster turn-ups, "

25 - Semi-genl; cross section fill; masonry No 2 system

28 - " " - cross " of Acr-Sub 6 end wall; 1 of Acr Sub-5

36 - nothing

37-7 5-2 left (SE) end

2 "

3 "

4 "

5 " (drawn)

6 gen view from front

over

System 2

- 37- 7 Gen View, Pit 2 (Across 6 + Terrace. } from
- 8 " " " " " " } from
- 9 " " " " " " } rd angle
- 10 " " " " " " } rd sharp angle
- 11 " " " " " " } down rd angle - show's relat. to top step
- 12 Curved side view of Terrace, Pit 2.
- 13 Pit 2, early stage - fill wall

39-7 } J2 + J-7 Junction

-8 }

Fig 2

Palace and Platform Assembly of the Oaohalis: Major Periods

Status

@ 1/2 PP Fig. 1 (fold)	Plan of Court 1 and associated balconies with building plans of I-2-1st-A I-6-1st-A I-8 " hatched " " (I-9)
@ 1/2 PP Fig 2 (fold)	Plan of Court 2 and associated balconies with building plans of I-9-1st-A I-10 I-11 I-12 I-13 with hatched " " of (I-18, I-20, I-21, I-22, I-23)
@ 1/2 PP Fig 3 (fold)	Plan of Court 3 and associated balconies. with build plans of I-18, I-19, I-20, I-21, I-23 I-19 I-20 I-21 I-23 with

@ 1/4 PP Fig 4. Schematic partial Plan of Oaohalis showing locations of group-sections.

over

Solcon's

Status

PP Fig 5

Read

PP Fig 6

Read

AB Figs 5+6 between them clearing AG 4x5 or up to Comb 2.

?-Fig showing "Trench 3" (right end of STA J-6-2nd (Pho 32-80

(Ac) Polt + Plotanus
Figs to do

Long. Section of I-2 tunnel - see note p 32-6 +

Find (??) better section showing I-2 b. plod. a unit with Period 2 fill.

= Fig 7, 8

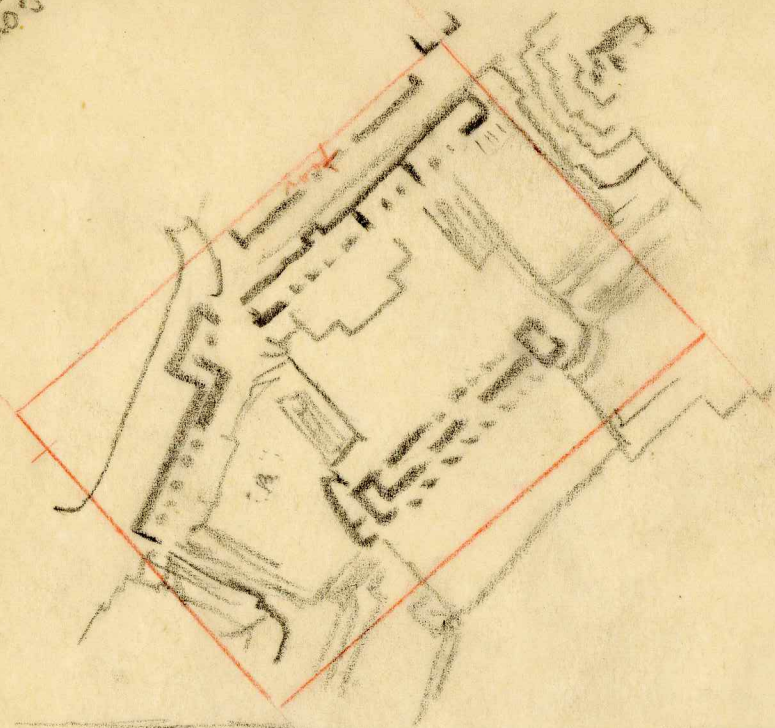
Main Section Series: add - continuation of trend - something I-7 looks full

- look up with I-2 junction

- with I-1 + Skelne.

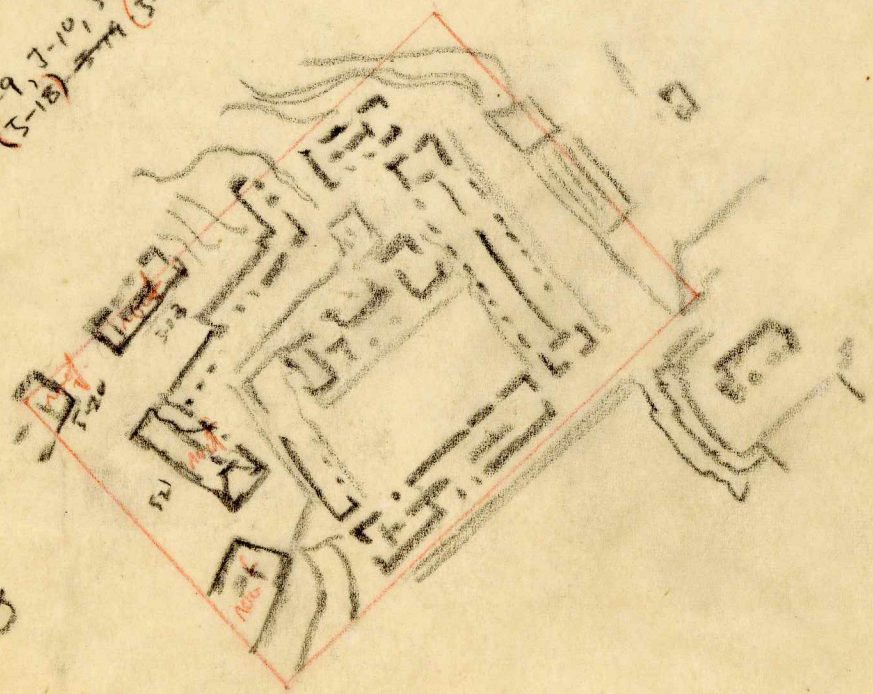
Single fold
(remember to show
AP & I-4?)

Fig 1
From AG-1
Plans of J-2, J-5, J-6, J-7, J-8



Partial sheet
1/200
(reduce 1/2)

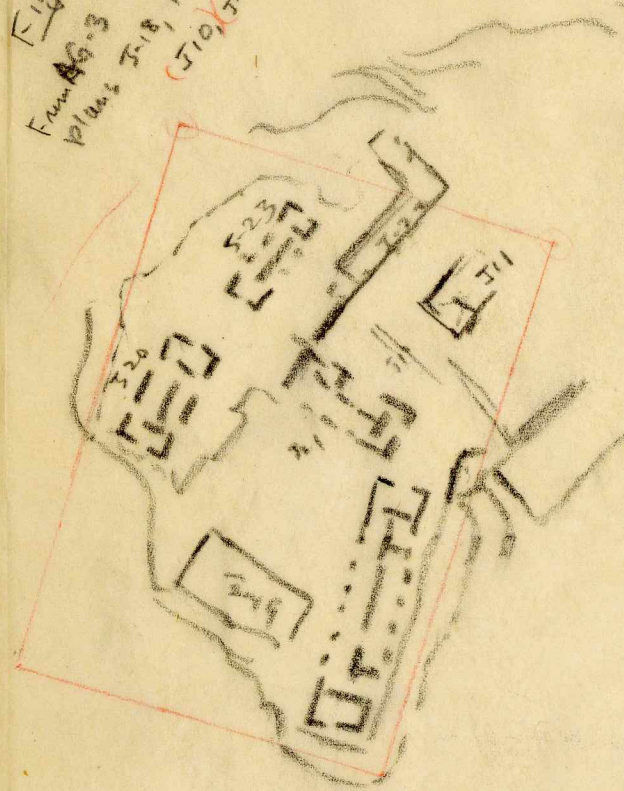
Fig 2
From AG-2
Plans of J-9, J-10, J-11, J-12, J-13
(J-20), (J-21), (J-22) (overlapping)



Partial sheet
1/200
(reduce 1/2)

(H). 2nd floor plan

Fig 3
From AG-3
Plans J-18, 19, 20, 21, 23
(J-10), (J-11), (J-22) (roof top)



Partial sheet,
(Reduce 1/2)

Fig 4
Stabilization (roof) plan,
for East in series.
Single sheet, 1/400
(reduce 1/4)

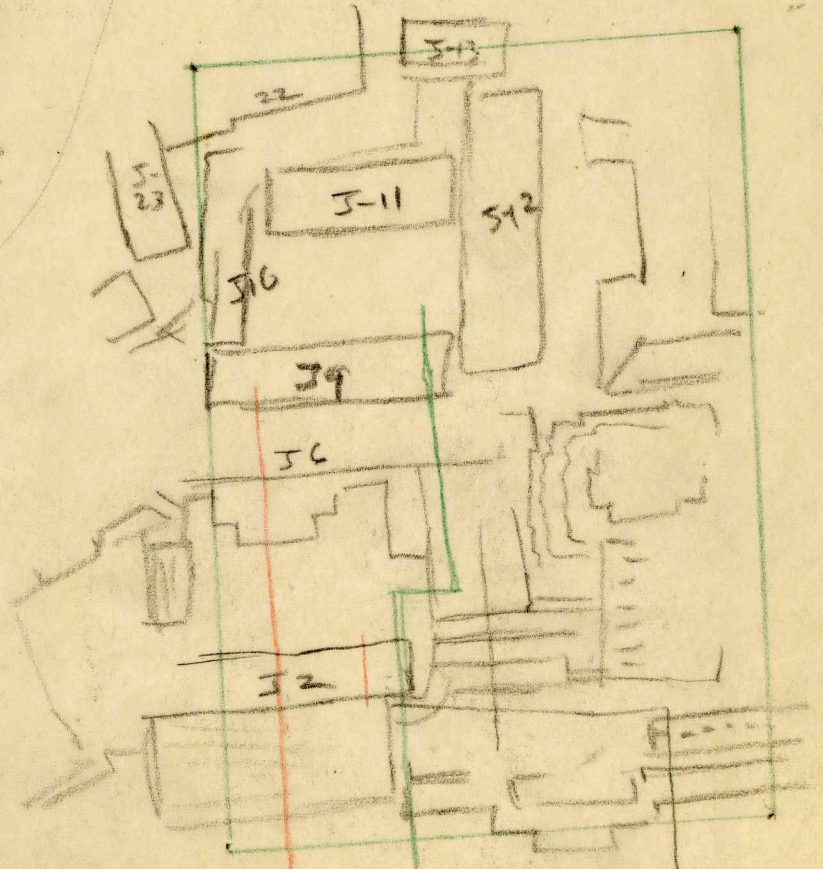


Fig 5 Fig 6 Fig 7 Fig 8

Oversized item not scanned

"Ideas"

See also "Figs"

Basal Platforms ~~of~~ ^{of} Periods
of the acropolis.

misc. Unit Ideas
and suggestions.

Basis for round corner reconstruction

Photo 33-53 (old end of I-2; - I-7 junction).

Stairways, Ct 1.

I-7 - Pho. 33-68

Tunneling

56 Rⁿ 3; 57: Photo 33-70;

33-110; 111

33-130 (skrong).

33-131

33-132 - fill wall (or dry. mud

7-encr wall?) in Tunnel.

33-133

137.

505
Facts

"House A" = ~~Sub~~-Acrop. Str. 3 (the chaps all off (valued)).

J-7-Sub-1 floor = the middle level: see photo 35-23 + note -
The moche is stuck in it

∴ Sub-2 = level of Sub-Acra Str. 3

∴ Str. J-7 (late)

J-7-Sub-1

J-7-Sub-2 (early)

et.
Tunnels J-2 + J-6/7 in 1933 (see photos). - with Pit no J-2.

Calls these ~~Trench, Pit, Tunnel~~
Trench, Tunnel, Pit No 1.

Trench 2a, 2b etc., Pit + Tunnel 2a, Tunnel 2b.

Trench 3 - think Moq. stairway.

Trench 4 - right end of J-6

System 1 (Trench, Tunnel, Pit) - dug in 1933

System 2: Trenches + 2 levels of Tunnel - dug in 1933

- cleaned up + whitened (any more dig?) in 1935

"Pit 2" dug in 1937, after removal of 1933 dump.

Trench 3

Site Nomenclature: "Sub

Sub Acc Str 3 ("Palace")

after raising at corner. = 84

Full height old. Plot wall 1.35
at corner (1935, head = 1.01
- 900.40 below terrace top *

Sub Acc Str 3 - Slope is .10 in .60 (exposed height):
max surviving length: 13.20 at exposed base; 6.60 of this beyond 5-7 story in count (AK Plot)

Caches, 1933, in Count 1 floor - could have been in Str Acc Sub 6?

See basic 150 (1944)

of 1.00 from corner of step, double that:
if from shoulder, is in right place, or perhaps, so *

* Acc. Sub - 6 Old. Plot. survived to within 50 cm. or
so of front of corner of shoulder

The caches were in floor material of this platform,
or of sub-material if not in excavation in it,

C&D:

W-12-15 }
16 }
17 }
18 } - Par

Four caches: Center of group
1.00 NE, .50 N.W. of N.E. corner of
Mag. stairway, 5th 5-6.
Under floor and on lower rock
fill of Count 1.

down to
ground

unslipped
small
banded shape

Mag

orange
bar die.

(too many bottom
pieces - probably
another of same
type need to quit.)

- 4 ft; 5th count
then go in - tanks
clear terrace on third

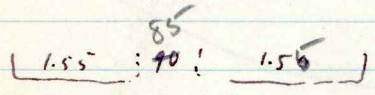
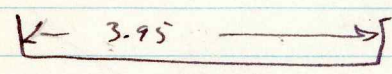
Decided the platform extend about
further to SW than its surviving front
face. The cache was well within front
& rear faces projected therefor.

3.95
85
370 155

157
85
158
390

4159 11
79
20

155
85
155
395



2 about right,

Sub Acc G. A

R.w. 1st - 3.95

Pub mod. wall in - .90 thick

5:12 = 43% ±

3.95
90
305
150
155

1.55 | 85.0 | 7

1.55 | 70.0 | 45%
620
800
775
25

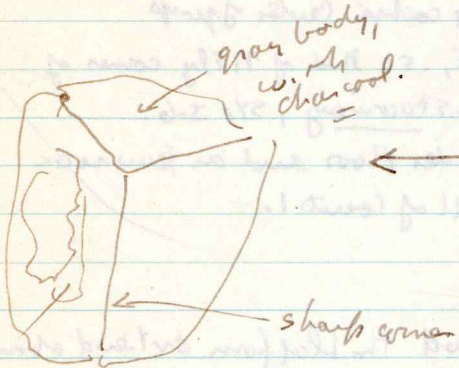
* Possibly terrace top raised at some time? - no likely

✓ Fray. of painted plaster (outside corner) in fill of Acropolis —
 (as ruin of Ar. Str. 3) — see note, Photo 35-25)
ck up in cat.

✓ House B wall thickness: 1.30 m — solid "block" masonry.
 Apparently no good photo — but a new search image shows one
 I seem to remember.

✓ These wall blocks — Str. 3

On floor of Str 3 (debris on): Worth clay — L-70-195 with
 steric inclusions & white plaster
 surface.



Painted Plaster surface, on face
 & rear corner L-70-196 (W-12-56)

L-70-197 (W-12-57)

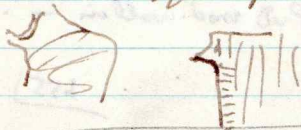
L-70-198 (W-12-58)

L-70-

✓ This white line coat
 not found on this
 with shochels.

A similar block (same material)
 found in L-70-194 (W-12-49)
 from fill on 5-7-2nd, above Str. 3.

This one shows rounded outside corner
 pulvis curves suggesting steric wave.



Dimensions Tables -
Potatoes.

Str. 1

	Height	Platform Units		Slopes
		Lengths	Depths	
High Terrace.	3.30	?	?	70°
Bldg. Plat. Str. 3	.60	0m 13.50	5.85	84°
" Str 1	.80	?	?	?

Building of Str 3, Section Table.

Str 2

$\frac{W}{155^+}$	$\frac{R}{85^+}$	$\frac{W}{155^-}$
-------------------	------------------	-------------------

Str 3

High Terrace . h slope.

chron

Pit 2 Sub-floor: complete resurface - 13 cm of chie's.

PD I - no noted (check out).

3 floors ad near to account for - see also sunny on big shed. 1999.

- earliest is top of terrace of Ac Sub-6.

- about 20 thick.

- next about 10 cm - surface, no plaster ident. / note.

- both run under May. Stair; earliest needed to connect ^{with terrace inside}

- the 2nd might (= 2nd of Pit 2 in time;

or equal to original raising of count floor).

May. Stairway flows 2nd floor: and must be no earlier than raising of Count, since it is too near edge of early terrace to make any sense w. th it.

B-3

B-9

B-10

Oversized item not scanned

Oversized item not scanned

Oversized item not scanned