



after Waldsee pl. 42

Retouched for Mrs. Weir

Throne Types

~~Tables~~

Flat Surfaced

1. with Back Screen

Tables - 4 legged

- 2 "

- 1 "

Benches

- Broad

- Narrow

2. without Back Screen

Tables.

Benches.

Legs

Straight

Tapering

Serpent head.

Dates Wanted - (Thrones + throne (?) Sculptures.

Atlix de Sacrificios,

Stela 3. (Moler vol 4 p. 7, no photo)

El Cayo

Stela 2 (Moler vol 2 no 2 Pl. XXXV, 2.

Cancuen

Stela 1 (pl. 13, Moler vol 4

2 (pl 12, 2. - legged?)

x Chicozacote

Lintel 4 (Moler pl. XXXVII, 2. (top leg).

Lintels 1

" 2

" 3

x? Chimikihá

South edge, Moler vol 2 no 1 pl. XI

Naxum - date range

Naranja

Stela 22 ("cushion")

x(?) " 32 (legged?)

x " 19 (legged?)

Palenzue

Tiger throne, H. of Tigers
" " of House E

Tikal

Wooden Lintel (Temp A?) - Moler pl. 71

x? " - leg, seat, gap etc - pl 78

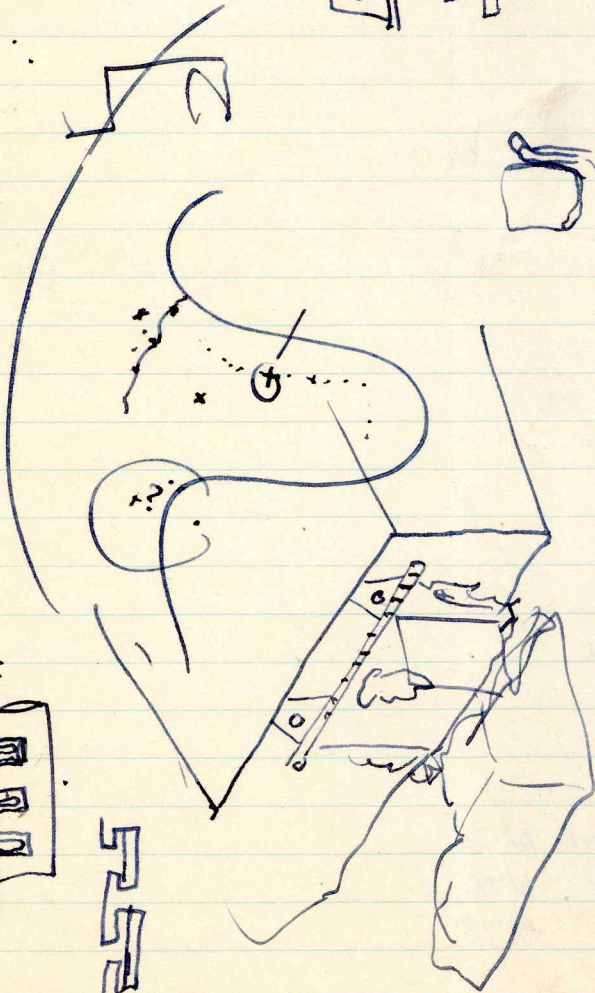
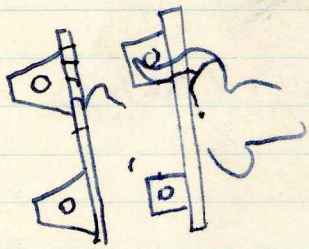
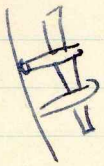
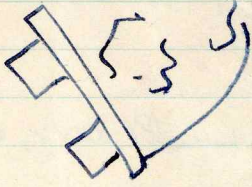
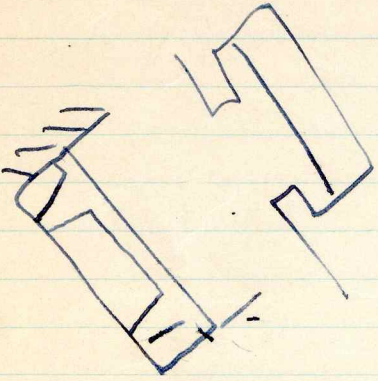
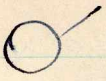
" " cushion - pl 73

Toniná

- south edge - (Moler vol 2, p. 119)

Yucatan

Chocmultun - range of dates



Two Contemporary Types of Maya Ceremonies.

An Analysis of Temples, Palaces and Baths at Piedras Negras.

- 1 - Very brief sketch of history of distinction between Temples & Palaces.
- 2 Brief Descriptions of each building
 - depending largely on plans, sections and perspectives.
 - Temples
 - Palaces
 - Baths

3 The manner of using the Temples.

a - The prohibitions.

The Secondary temple - censers, ^{leads censer} copol.

- the feeding of ~~idols~~ "gods" through induction of clay basins idols

Early Spanish authorities for same type of ceremony

- in Yucatan

Archaeological distinction of the censers and of copol

classically in Yucatan.

- East coast
- Br. Forest.
- Yucatan
- Chiapas
- Tabasco?
- Campeche?

Absence of other idols.

Occurrence at P. IV.

- last fig fragments.
- lid of a stone censer 9.15.0.0.0.
- Lead censer.

The time - goes chronology

- Thompson correlation
- Volter's suggestions

is possible to suppose there were numerous clay idols, (censers) & much burning of copol.

b - Structure of P. IV. Temples.

- the sill in the censers
- the column altar - as God in its own right (the gods of Jac. was of a kind
 - or as pedestal for chief God.
- the ~~pedestal~~ to carry off smoke.
- the altar as found as God or pedestal for the evil God of the Secondary.

Identification of Thrones ad P. IV.

Lintel 3 pictures reologically a ceremony in which a dignitary sits "Buddha" fashion on a throne.

Throne one is a replica in all essentials, and is therefore the type throne from which a new stand can be made.

Two of its features are very unusual, but appear in realistic art of the Uucumtá as follows:

The back screen, ~~seen~~ ad + Piedras Negras^x in ~~two~~ ^{check up} ~~cases~~ - on Lintel 3^x + ~~thrones~~ ^{which} ~~found in the~~ ^{ceremony}; possibly at Palenque in ~~Panel 5~~; and ad ~~frontal~~ ^(figuring)

The tapering leg; ^{On Lintel 3 + Lintel - ad PN)} on Lintel - and Ray/Cordy St 33 ad Yaxchilan, on pier of House ad Palenque, on two figures ad ~~frontal~~; on stela ad _____.

In all these cases a dignitary is pictured sitting on a table supported by the legs ^(what there is no) and, ~~before~~ ^{behind} the back screen^x if ~~there is one~~.

Neither the Tapering leg nor the back screen is shown anywhere in the art without the seated figure^{xx}; and neither is found in actual existence ^{reliably} except behind and/or under a ~~single~~ ^{several} ~~of~~ ^{of} ~~several~~ ^{height and size for} use as a throne similar to the known cases from the art ~~as~~ ^{above} cited.

Therefore we are safe in using either, when so found, as criteria of the function, when so found.

On this basis Nos 1 on the account led identifying by both tapering leg and screen plus ~~clearly~~ ^{decorative} design of screen almost identical with that on Lintel 2 scene.

Nos 2, 3, 4, 5, 6 and seven on basis of screen.

* Px There is (in ~~no~~) ^{shown} probably a base screen on the eroded Lintel —, in which tapering legs are certain and a seated figure probable.
xx On St 40 a large scale head & shoulders is established in the full figure on a tapering legged table.

found 14: IP 2

Out door Tables

(1)

Only evidence for outdoor altar function in Uxuntu is placement of ~~drum~~ stone drums before or behind stela (Yasuhara).

Small drums are found at P.N. ("Portable Altars"),

a. in buildings which may be main temples or (more likely) minor ~~temples~~ residences.

b. Buried at bases of stela.

c. Never before stela, on the surface.

∴ these stones, while mostly altars, were not outdoor altars in the usual sense, for use before stela.

Normal sized drums are found

a. concentrated in one mound (25 at Str. 0-7), without stela association.

b. one or two in south group, probably associated with stela; no others known.

∴ the concept of round drums was known and accepted at P.N. at least as early as 9.10.6.5.9(?) (MSS#1) but probably to a very limited extent as stela altars.

P.N. stela fall into ^{several} groups, apart from scattered examples.

of these the groups before Str. R-3 + R-4 (9.5.5. to 9.10.5);

before Str. R-5 (9.10.10. to 9.11.15.0.0)

Str. R-5 (9.12.5 to 9.12.10)

Str. R-3 (9.15.0. to 9.15.15.)

Have no subsidiary stones associated with the groups, what ever.

the group "before" Str. R-4 began 9.12.15. and consisted of 10.0.0.0. without associated stones, other than buried ^{here} portable altars.

∴ In general, from early to latest times stela, ^{here} could function without altars; any presumption that the tables were altars must arise from their form and position in relation

P.N. Throne Types

Table - M.S.S.? - small

Throne 1 - 2 leg (stake) - rectang. outline screen

~~Throne~~ 3-18 - 2 leg rectang. screen - mosaic

Bench

LINTON SATTERTHWAITE, JR.
ATTORNEY AT LAW
137 EAST STATE STREET
TRENTON, N. J.

to known altars.

Form: The tables are much larger than known stela altars in Usumacenta.

3 out of five are rectangular.

+ they have legs

∴ They may represent a new form of altar but may just as well represent a different function.

Position

Altars 1, 2, 3, 4, though in general neighborhood of stelae, are said to be centered either with ref. to specific stelae, or to groups of stelae.

∴ the presumption is they were used independently of the stelae.

The same group of 5 fail to be centered before buildings, though this would have been easy. + Altar 5 is centered with ref to O-13, a temple, altar 2 is ± centered before a palace, though it fails by —.

∴ the presumption is they were used independently of specific buildings, though always in neighborhood of both buildings + stelae - i.e. in ceremonial centers.

LINTON SATTERTHWAITTE, JR.
ATTORNEY AT LAW
100 EAST STATE STREET
MAYAGUEZ, P.R.

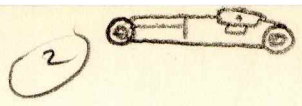
Final Conclusion

There is no specific evidence for an altar function to be derived either from form or ^{specific} position - the way is clear to give full value to any evidence of a different function, so long as it is consistent with position in ceremonial plazas surrounded by temples, palaces and sweat houses, and the presence of canyals and waterways in the areas themselves.

Make an altar # - being altar #.

QUESTIONS TO JAM

Outdoor Tables



Altar function is ~~found~~ + ~~more~~, ~~sub~~:

~~None in Temples~~

~~None directly associated with stelae, thrones, or thrones.~~

5 ad P.N. all in ceremonial groups, all heavy, same general height + size.



Almost unique in Usumtuta + Maya area.

∴ of same general function.

None in South Group, S.E. Section nor Acropolis Courts, nor ∴ not essential to Temple or Palace operation, nor use of stelae - a subsidiary and late (mainly readings) function.

- Altar 5 plain.
- " 3 plain.
- " 4 God of legs
- " 2 glyptic legs, edges
- " 1 " " " and top plus design on top.

∴ Function pertains to religion (Altar 4, priestly inscriptions scene similar to Sac. rock) or at least to the priesthood.

Altar 5 is centered ad base of Temple stairway
 4 + 5 - do not centered before Temples or Palaces
 1 + 2 might easily have been, but are not centered before Temples; 2 is not + might have been centered before Palace.

∴ not connected specifically with ceremonies in temples or palaces - their use had ^{nothing} ~~no~~ ⁱⁿ ~~no~~ ^{connection} with the buildings near which they are found.

all are on legs to Druis plaza floor, with no elevating platform, as is throne 1; altar 2 has perforations + glyphs in same loc. general location as throne 2; Throne 2 could be ~~substituted~~ placed in the Sintel 3 same if we straighten the legs of that throne + remove the back screen. The screen is impracticable here (no wall); straight leg thrones are shown on House C ad Palenque, and scre

Straight legged and a few low thrones are shown at Palenque, and straight legged & 5 clearances do to be occur there in the palaces.

∴ final conclusion

∴ lacking positive evidence, the proper working hypothesis is that these served same functions as thrones, but outdoors in the plaza.

The Outdoor Position

(3)

The Tapering leg table is depicted ^{in use} ~~in use~~ at Palengue (Hauso E) at Yarochilam (Lintel — or St 33) at Piedras Negras (Lintel 3) and at Jomata (St. 19). In all cases it is used as a seat; there are no representations in use which do not show this as its principal function, though offerings may have been placed on it also (Lintel 3 - a jar).
∴ The tapering leg when found indicates a throne

The tapering leg occur on a four-legged ^{and at Palengue a round table} ^{and side of of item F;} inscribed table at Yarochilam, where also its use is indicated; it occurs actually at P. V. within the building.

PHOTOGRAPHED BY THE UNIVERSITY OF MICHIGAN

∴ Therefore the presence of thrones ^{outside in blocks and courts} ^{ceremonies, whatever they are, is} are not improbable and the last ^{solid} objection to their identification with similar outdoor tables vanishes.

If the similarity of designs on top of the altar 2 & Saucy rock mean identical function, the weight of evidence requires the rock to be considered a throne; but identity of function need not be assumed since the use of a table top for sculpture is very conventional (see Molen —) although common on stelae altars. The round form of the throne may have invited the application of a familiar design seen elsewhere (as at Yarochilam?) on altars, stelae "altars".
Further

- Pates - 2 Merly - M5549 - 9.11.10.0.0. (Same as stela 35).
- alt 2 - 9.16.0.0.0 (d. possibly Lintel 5 ???)
- thru 1 - 9.17.15.0.0
- alt 41 - 9.18.0.0.0

Tapering leg - Chiczapote - shown under throne.
 Jaina (??)
 Tonota " " "
 Naranjo " " "
 x Palenque " " "
 x Piedras Negras " " "
 Uaxutun - shown on stone bench.
 Yaxchilan - shown under throne.

No containing representations.

Occurs once as P.N. inside.

" as Yaxch, outside (free, in plaza).

" as Palenque - " (against outside of palace).

Conclude:

Belongs to Thrones exclusively?

If so, they occur outdoors as well as inside.

Interim
Tables

Straw logged
Yakim logged.
Atlantic and Bsga.
Ser S & M
Frings

Berches

Screen.
Red angles.
L. shaker.
U. shaker.
Anns.

Caban - Cluney in "Joat wings".
Chicken Canal
- Benth + nicher + allan?
Warrior, Washboard.
+ 1 yr 1 cr
- DN, Pse. Chiller

Small
seats

02

Ex Interim

Tables - ~~For~~ ~~Straw~~ logged
Yakim logged.
Red.
Round.

Type B. Combination Table-and-Bench

No.1 Throne 1 in R'm 1 of Str. J-6, Acropolis, Court 1.

Tapering legs
Seat rectangular
cord holders
Back screen low rectangular
cord holders
Supporting rear bench
(lengthened to fill niche).
Seating area (reconstructed) 1.82 x 1.27 x .65m high.
Bench .50 deep
Stone (slab) legs, seat, screen; masonry bench.

Position: Palace room centered on small court
Behind central doorway of room, rear (bench)
part built into special vaulted niche
Small raised room to right, connected by doorway
reached by steps
Most prominent ~~position~~ interior
position possible in secluded court.

Decoration: Legs, seat edge carry inscription; screen
carved as serpent mask.

No.2 Throne^A of Str. J-18, Acropolis, Court 2.

Legs probably straight.
Seat # rectangular
cord holders? (seat destroyed).
Back Screen low rectangular
cord holders? none at base
Supporting rear bench slightly shorter than screen
Seating area (reconstructed) 1.88 x 1.00 x .55m high

Small slab and ~~xxxxxxx~~ mortar masonry throughout
(roof comb technic).

Position: Palace room centered on small court
Behind ~~central~~ doorway, central of original
~~xxxxxx~~ gallery and facade on court
Associated rooms possible on either side.
Most prominent interior position possible
on small secluded court

Decoration: Sunken panel legs and screen, seat unknown;
paint?

Bench
Type C. ~~Миникухонных~~

C-1 with back screen.

No. 3 Throne A of Structure J-21.

Seat rectangular- no cord holders (probably)
Screen - modified rectangular (low)
~~Seat~~ - no cord holders (probably)
Seating area 2.34 x 1.10 x .61 high.

Regular masonry bench, masonry screen.

Position: In secondary palace room at end, off-court side
Centered in room behind secondarily narrowed
doorway with steps leading to interior of
another palace; this doorway later walled
up in part at least.
Small room to right, connected by window from
the beginning (i.e. of the room which
is secondary.
Most inconspicuous position possible.

Decoration: paint? otherwise plain.

No. 4 Throne A of Str. J-11.

Identical with preceding except size.
Seating area 2.86 x 1.13 x .62 high.

Position: In secondary palace room at end, off-court side
off centered in room but off-center with
reference to doorway which faces narrow open
alley, all view cut off by terrace beyond alley

Small(?) room to right, connected by narrow
doorway later filled up to form window.

Most inconspicuous position possible.

Type C-1 continued (bench with back screen)

No.5 Throne A of Str. P-7. (right room)

Seat ~~xxxxxxxx~~ identical with above except size.
Screen - probably unmodified rectangular.
Seating area 1.76 x .84 x .63 high

of Sweat bath

Position: Centered in rear room/facing blank wall
Room connects with second throne room to
right by narrow passage.

Most inconspicuous position possible.

Masonry throughout

Decoration: paint? otherwise none.

No.6 Throne B. of Str. P-7 (left room)

Identical with above in all respects. (reconstructed).
Seating area (reconstructed): 1.76(x) x .92 x .59 high.

Position: same, connecting ~~xxx~~ with A at left; off center
behind rear doorway opening on alley.

No.7 Throne A of Str. J-12

Built-in seat and screen:

seat: rectangular

screen: rectangular (reconstructed)

Position: across end of transverse end room; facing
blank wall but with doorway to exterior close
at left; small doorway connects room to
court side gallery; possibly window connects
with room to right.

Masonry through.

Decoration: paint? otherwise plain.

Seating area 2.25 x 1.07 x .54 high; height later
reduced by raising floor to .42m.

Probable additional ~~Thrones~~ at P.N.

Type B. Throne pictured on Lintel 3.
Practically identical with Throne 1.

(Destroyed) probable throne of M.S.S. No 9 (9.11.16.0.0)
with which Peabody leg may belong???

Seat rectangular with rounded front corner

If reconstructed with .50 cm bench, ~~xxxxxxx~~
and 18 cm screen, seating area ? x 1.03 x ?

If Peabody leg is added, height approx. .47 to .59m
Decoration - glyphs on seat edge, leg.

Type ~~xxx~~ C-1 or C-2 (without screen)

Left bench of Str. N-1

Seat probably rectangular

Seating area (reconstructed 3.40(?) x 1.20 x (.60?)m high

Position- one side (reconstructed as) built in; left side
of outer chamber, faces open front; prominent
position for this building.

Right bench of same

Seat rectangular

Seating area 2.80 x 1.70 x about .60m high (surface gone).

Position: one side built-in; faces blank side wall,
with open front to left; in right side of outer
room. later modified by asymmetrical extension
to left and to front at left, apparently of same
height.

Less prominent position than was possible.

Possible thrones.

Type B. Str. J-12 gallery. bench part 2.15 x .25 x over .25 high
(Cp. with J-18 bench part, 1.88 x .50 x .55
J-6 " " 2.40 x .50 x .65 high.)
Faces outer doorway, slightly off center, one
end of gallery.

Type B (or A) Throne of Stela 40. (tapering leg with circle).

Type C-1 or C-2 Bench in J-17 sweat-house ?



