

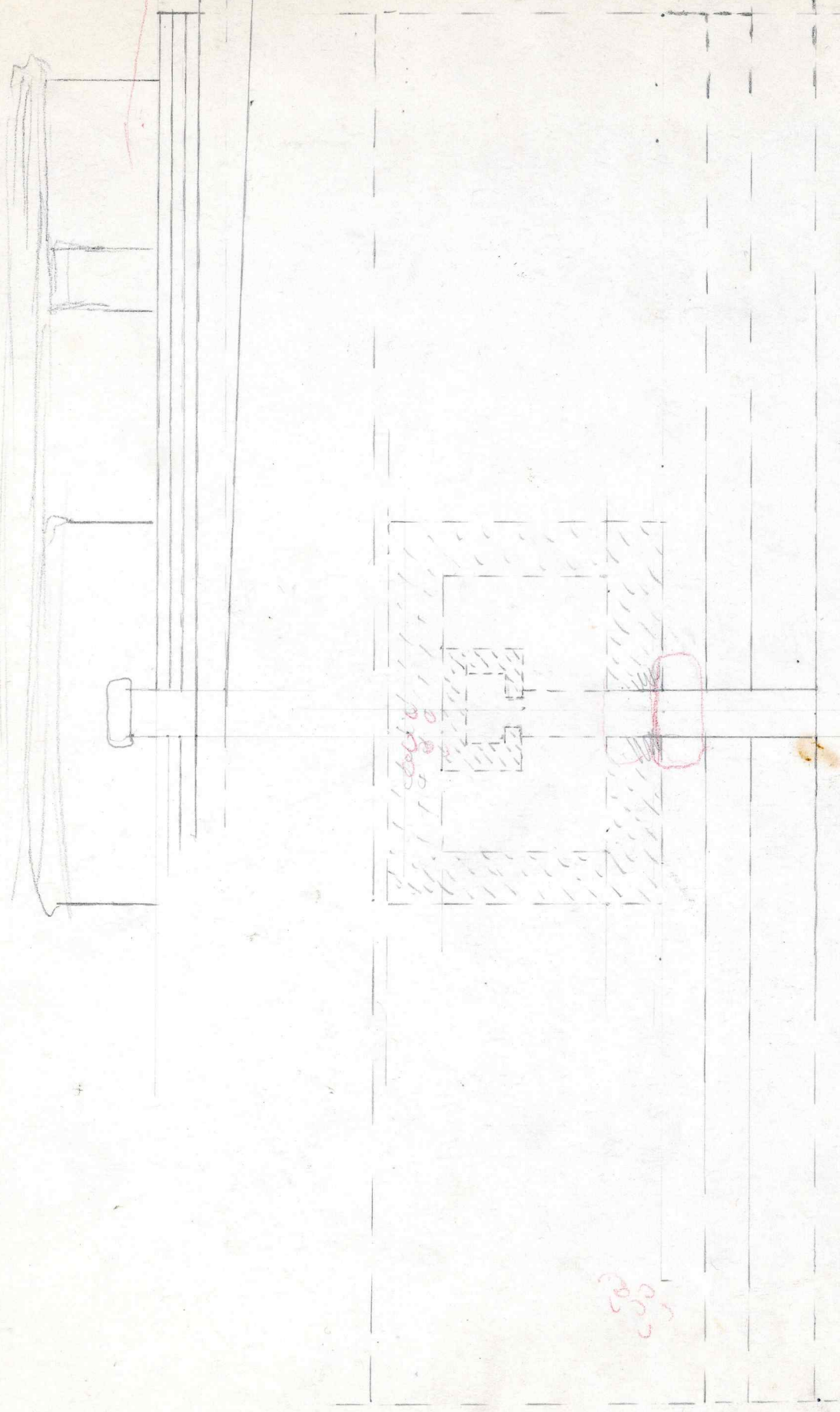
S-19

S-19

S-19

Revised

Based on  
Palmis  
(LS 1934)  
+ N-1 +  
R.C.



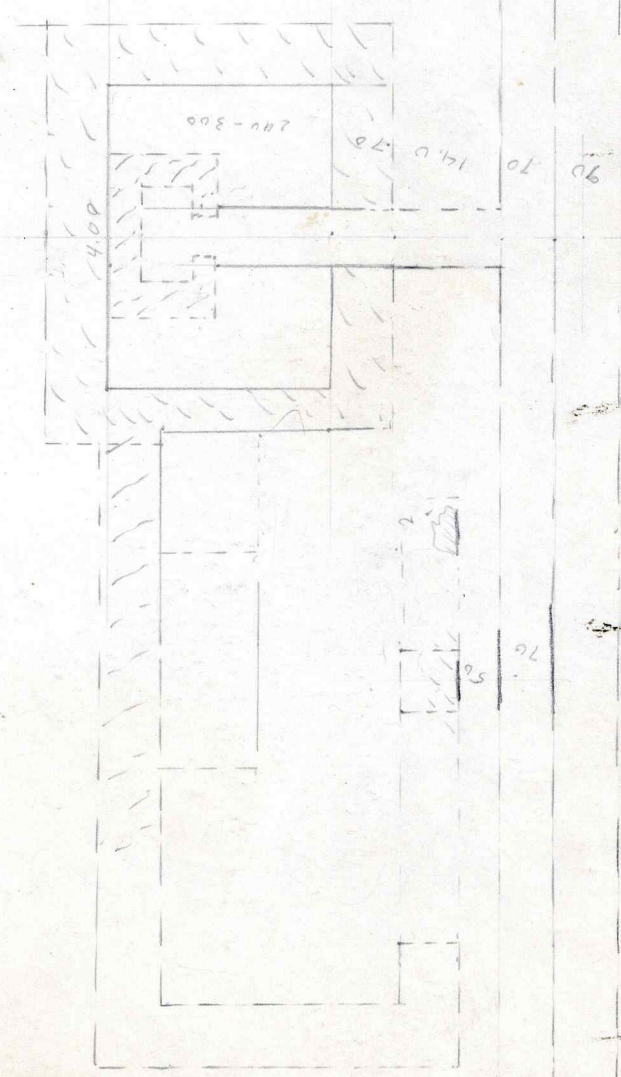
Handwritten notes in the central area, possibly '100' and '100'.

Handwritten notes at the bottom center, possibly '100' and '100'.

N-1 Five  
At least  
from  
arrangement  
doubtful.

6.85  
20  
2.95  
70  
14.0  
70  
90

6.00  
70  
2.95  
70  
1.46

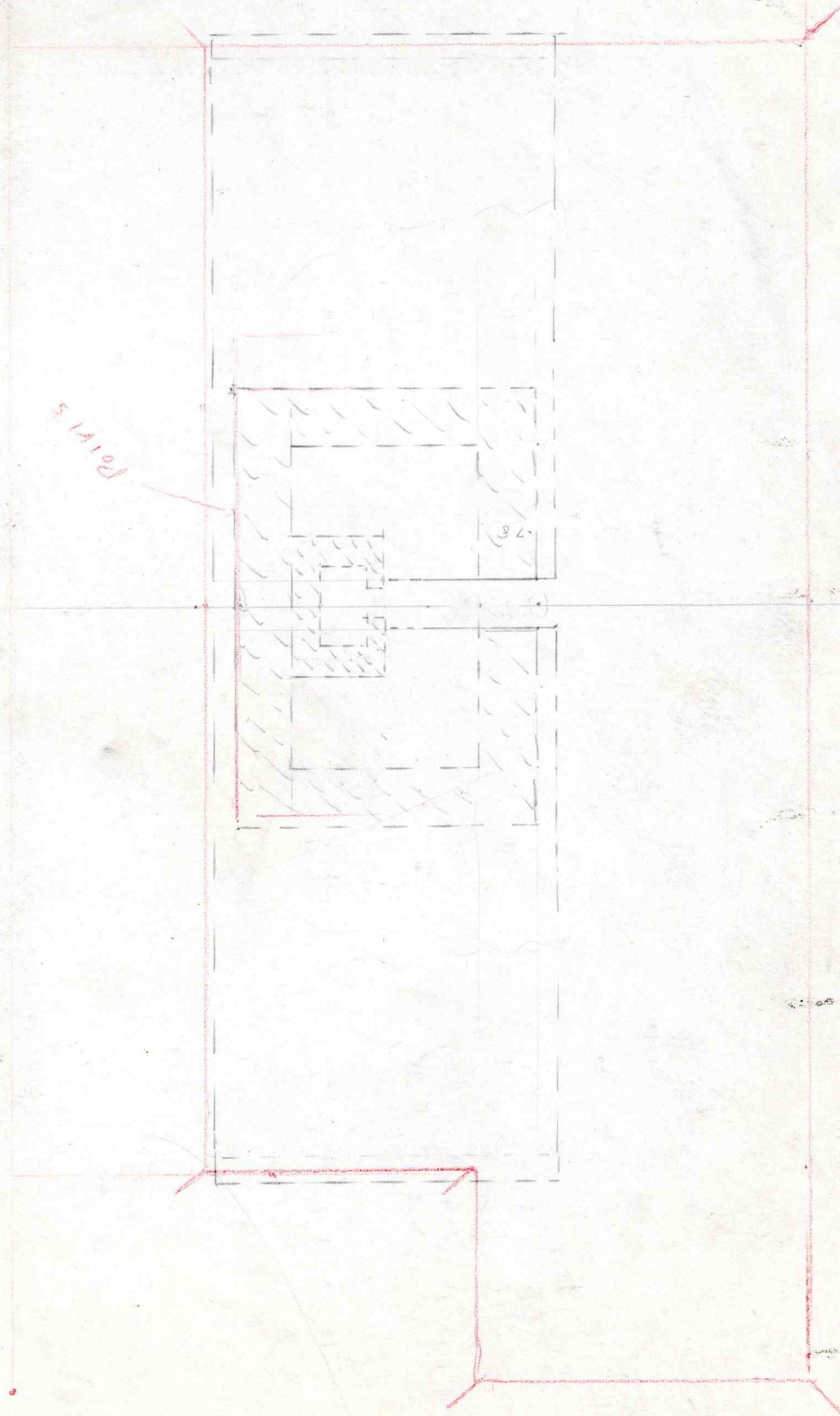
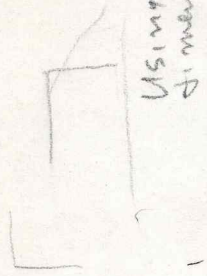


1.00  
5.66  
7.10  
14.2

04

0-4

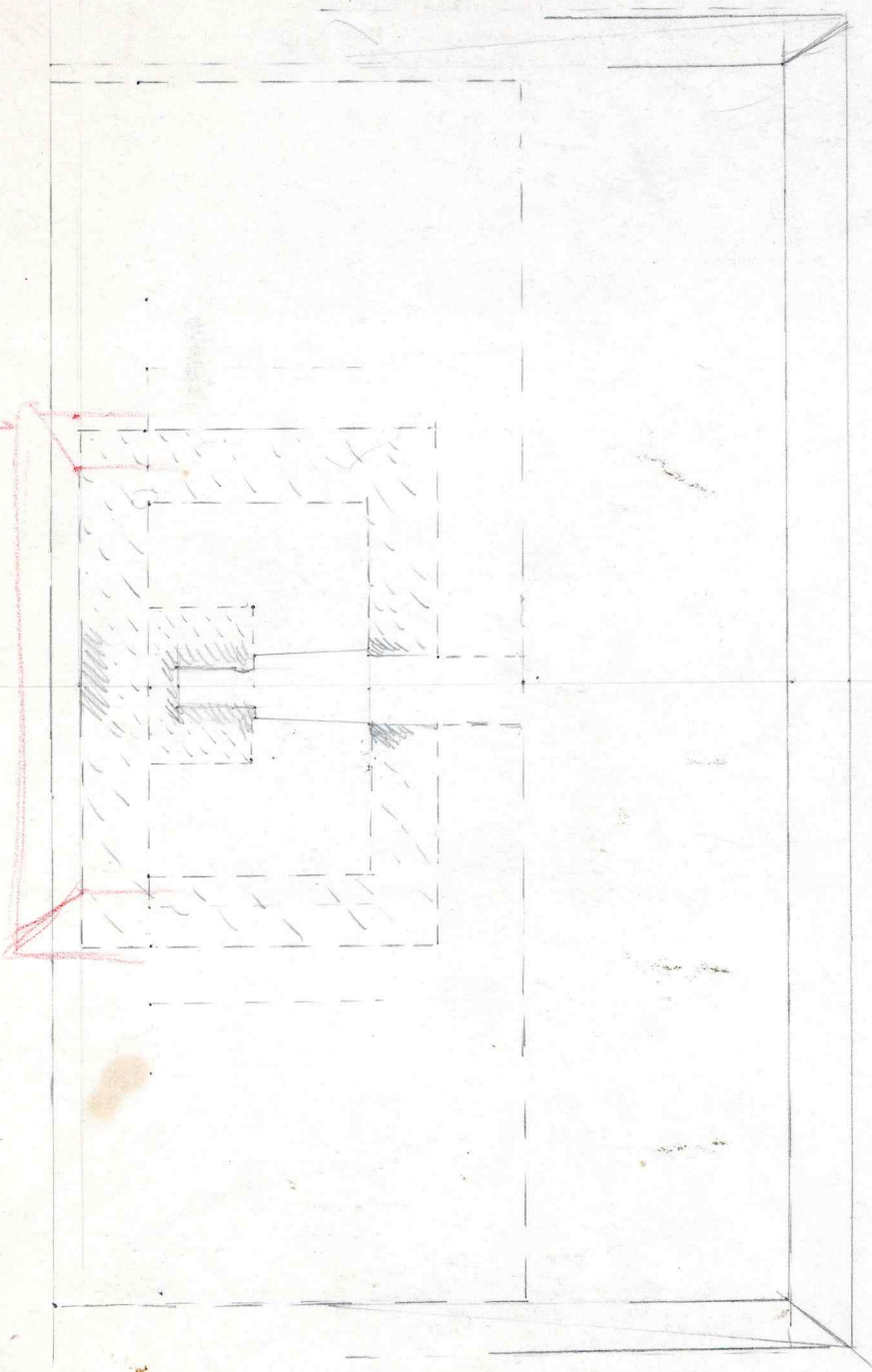
Using N-1  
Dimensions +  
STOVE.



S-2 S-2

S-2  
Recent  
1940

Parry's mound



Basis:

- N-1 Fire box extension dimensions
  - " duct vacuum length (width = N-1)
  - S-4 wall thickness (AV, 90)
- Parry's mound contours.

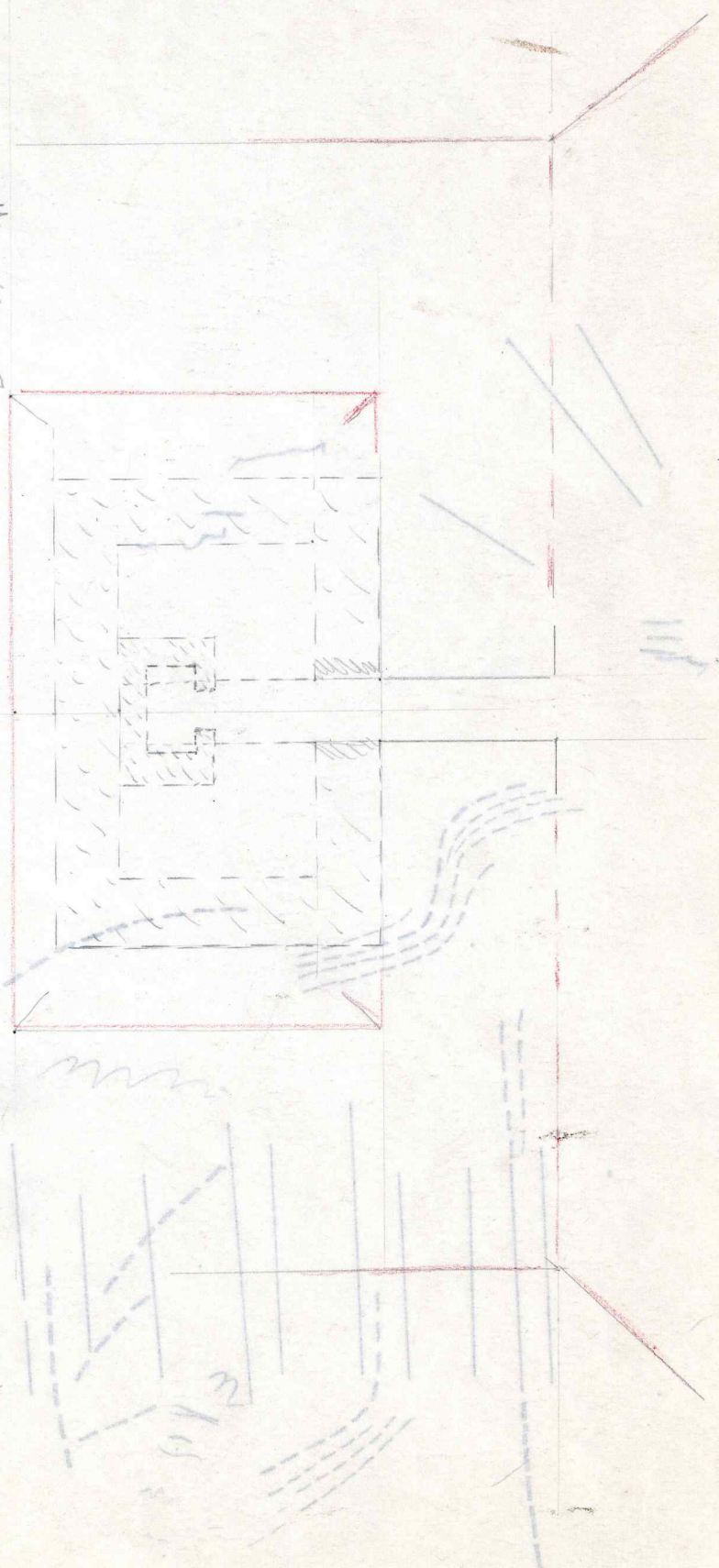
290  
 1450  
 1760  
 128  
 34  
 220  
 340  
 17  
 20340  
 340  
 17  
 1731

S-4

S-4  
Recent  
1940

Some assumptions,  
what needed, as for S-2,  
(15. N-1 dimensions for  
steam room. fit the  
ground very well

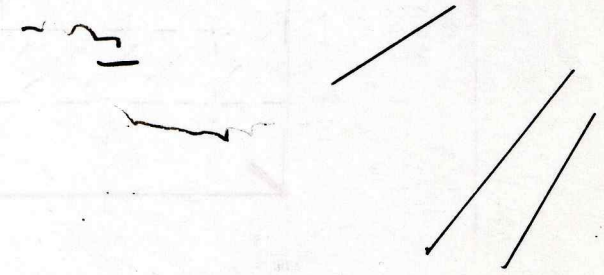
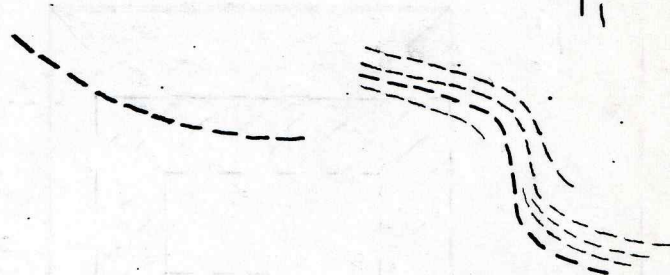
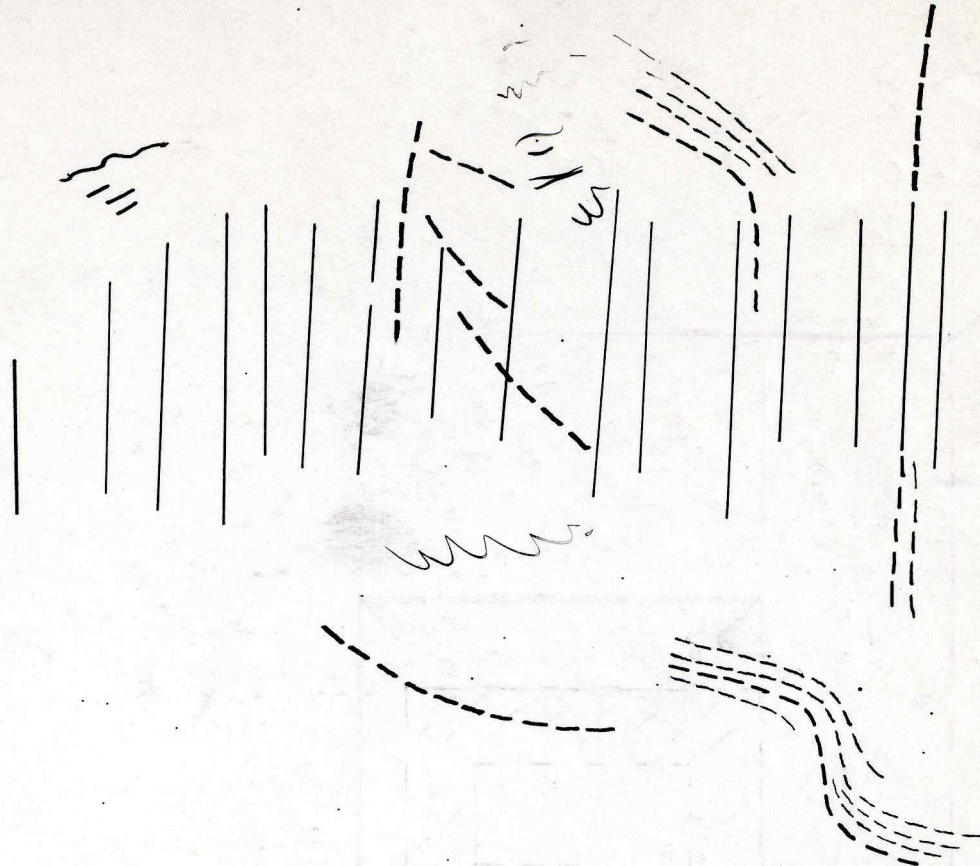
Point's  
Pumped  
Steam



111  
2-11

111  
1-11

(contingency center)  
at 2 of 10, between 100 and 110  
adjacent to 1-11 (111)  
sub 7.8 - above 100  
How far from 100



100  
111  
2-11

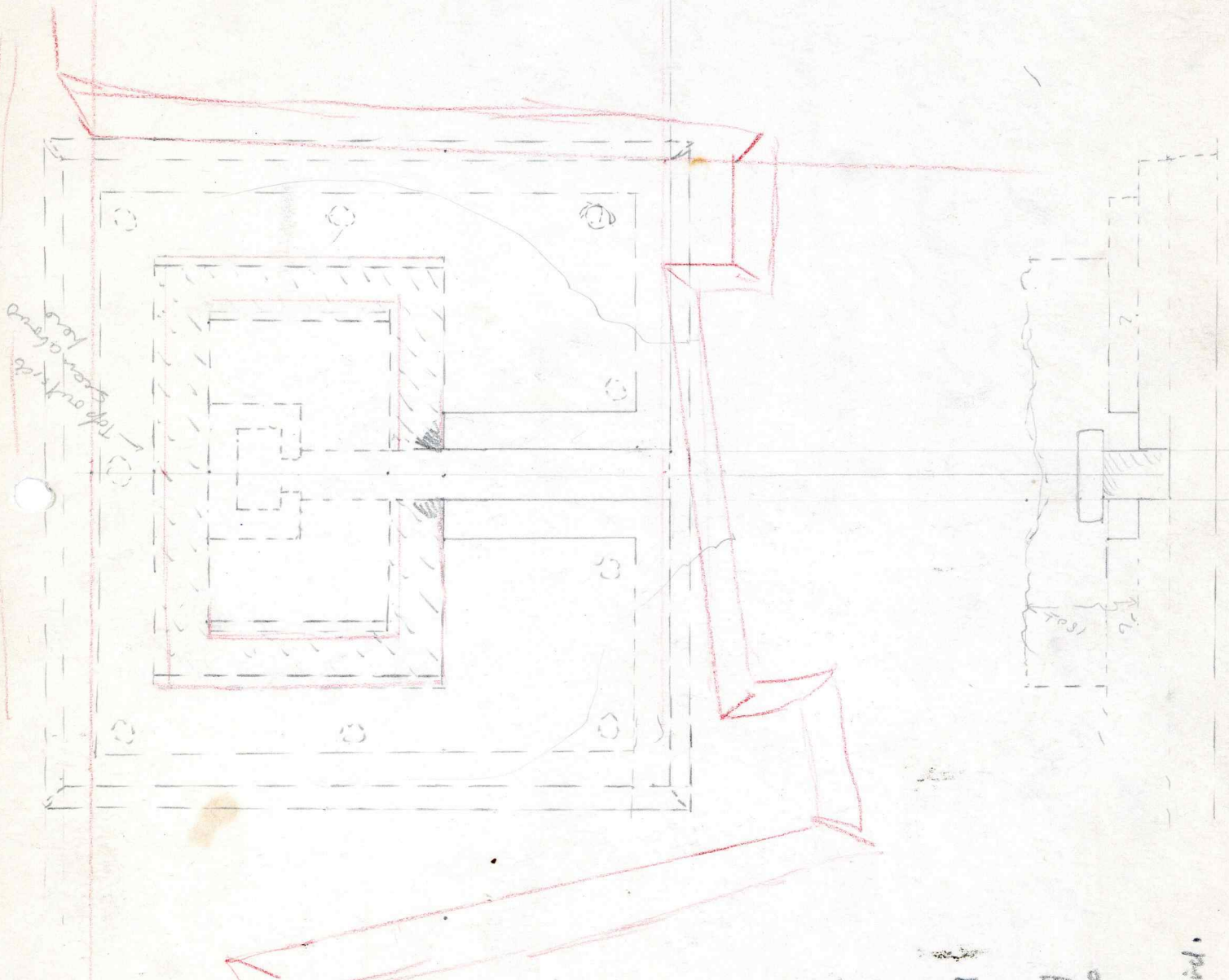
R-13

Using N-1 stove,  
N-1 room dimensions  
(fits nicely with  
Parris's oblique mounds  
from debris.

Thickening Parris  
walls to 2.90  
(as in S-4

Parris mound  
shows no room  
for side chambers,  
had plenty to  
front one.

R-13  
Recon. Plan



Top of trench  
over  
Parris mound

Fairly clean from  
Parris debris mound  
that there was no  
side rooms probably  
so called, but there  
was a front one  
cp. P. 7 early period.