

Near Ludden:

The following things are still to be done on the map:

- 1) Indicate modern grave
- 2) Locate stela 33 (?) in front of R-5
- 3) Locate stela 24 in front of R-9?

(I don't know if there are standing or fragments & have not put them in)

- 4) Draw grid lines, N, scale etc.

$$\begin{array}{r} 26 \\ 14 \\ \hline 40 \end{array}$$

$$\begin{array}{r} 78 \\ 18 \\ \hline 96 \end{array}$$

7

16

55

19

46

1330

11

16

2

9

4

54 Garfield St.,
Cambridge, Mass.
December 8.

Dear Lizan,

Thank you for getting my check through so promptly. I'm sorry I had to dash away hurriedly Saturday afternoon without getting every thing put back in place. There were several items I neglected to do on the map and afterwards meant to jot down for you, but in case I didn't leave you the record, here they are:

1. The modern grave in the N. group.
 2. Two small mounds in front of U-1 indicated in dotted lines which I think I omitted in tracing.
 3. Stelae shown on the Mackley map and not appearing on mine:
 - 1- In front of R-9 on the axis ^{SOME NO} 24
 - 2- Third of the right row in front of R-5. ^{SOME NO} 33
- There are doubtless other omissions.

which I hope I'll have the chance to
correct when I'm in Phila. again.

I hope you are feeling better
than when I last saw you. I feel guiltily
responsible for keeping you up and
about when you should have been
resting and I hope you have since
been taking better care of yourself.

Very sincerely,

Laticia

Final Check Sheet - June 23.

S group + SE Section, E group

W end group

NE Section

8. ~~V-1~~ ~~Photo hind V-1~~ } meas.

~~Plug Pit -~~ " " }

~~Meas P-7, with level~~ ~~keep over~~

~~Fig R-16: ^{meas. steps} ~~yellow brass lambusol mold, 2nd tenor.~~~~

~~meas. altar - lower for cash.~~

~~Fig O-12 - chairs under 3rd tenor?~~
Yes.

~~✓ I-6 end meas.~~

~~✓ I-29 - meas.~~

~~Fig ✓ S-2 + 7~~

~~✓ Count 1 floors.~~

~~✓ S-12 - thens cleaned?~~

~~✓ S-3 bldg Plumb - chaw.~~

~~✓ S-1 - swing cists~~

~~Fig ✓ S-4 - 90 in over top tenor.~~

~~covered to bottom in this avail. lobb. tried last day.~~

~~* Fig K-5 - ~~Fig for Floors at music.~~~~

~~✓ Busul tenor steps~~

~~✓ - Poly. stand on K-5 - 3rd? yrs.~~

~~↳ Measure many extent of white K-5-2 tenor, right now. (from 3 K-5 stones)~~

~~↳ Note in debris east right side left photos~~

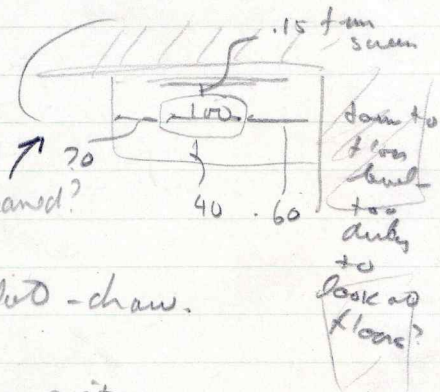
~~Chr. 3.80 right of the 3 stairs~~

~~7:20 + 5 pm inner outset.~~

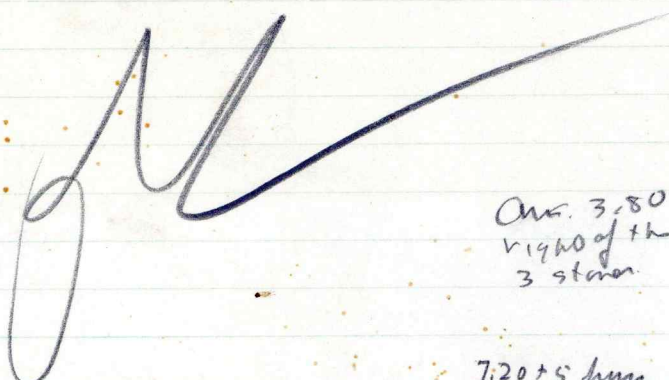
~~✓ Meas. for angle of K-5 - 2nd stairway, 2nd tenor. (locate the angle 1 way & another)~~

~~✓ - Draw masks.~~

~~↳ Power altars~~



Two calipers in P m



Choice kind of Map changes. → hnd 1

LS 1939

Sta 0-2

Jan 22 1939.

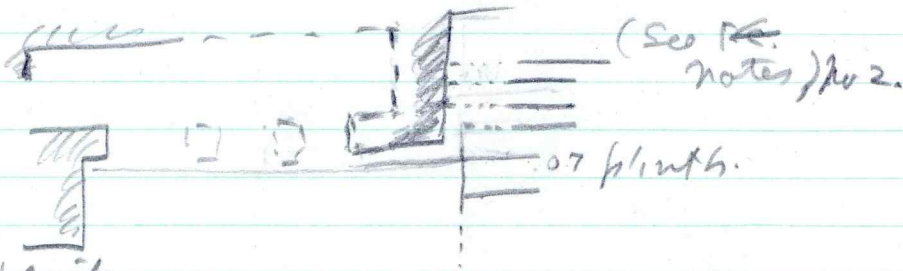
J-2 - + J-7 : Stairway - carry across.
fix junction line.

J-2 - R'm 5 - plinth.

✓ J-6 - Restore two pieces in R'm 2.

566
561

J-8. - added hachi;



J-11 - narrow plinth
at rear

J-12 - gets narrow plinth.

J-13 - plinth runs all way around, in dots

J-10.



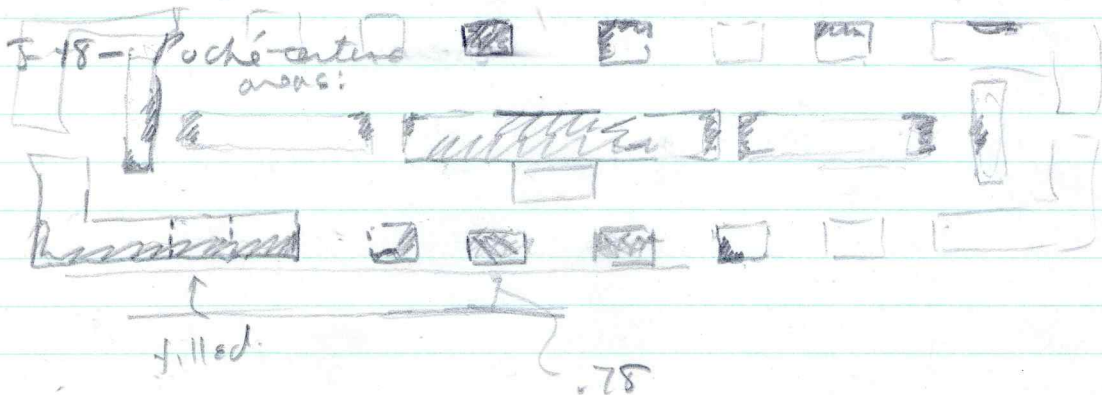
← none of this should be locked ends as
shown. See Hanson f. plaster note, J-10 1937 (Vol. 2)

found ←

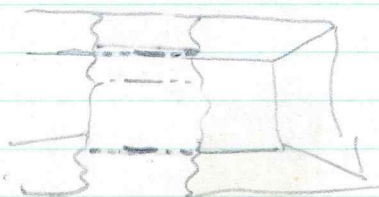
J-20 - plinth at rear (horiz lines)

J-21 - PuD in throne.

J-23: Poché is in corner places. - : add second "plinth"
at gets a very narrow plinth



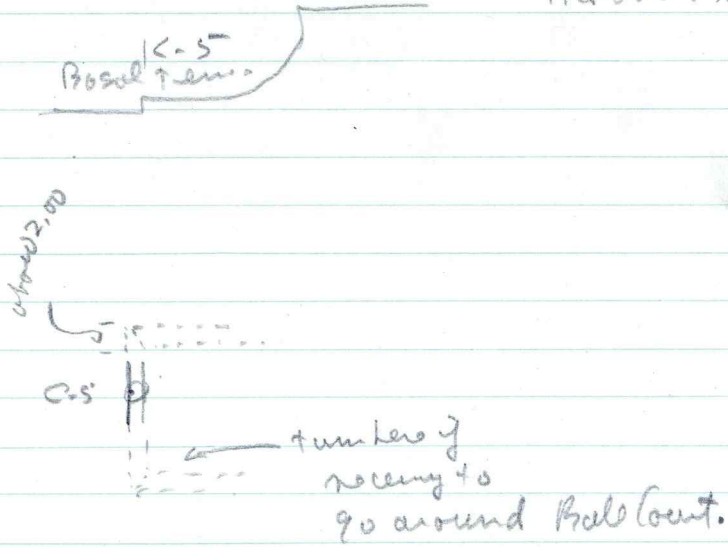
J-24 - See how sockets in vol 3. - PuD it in cut out, about
middle



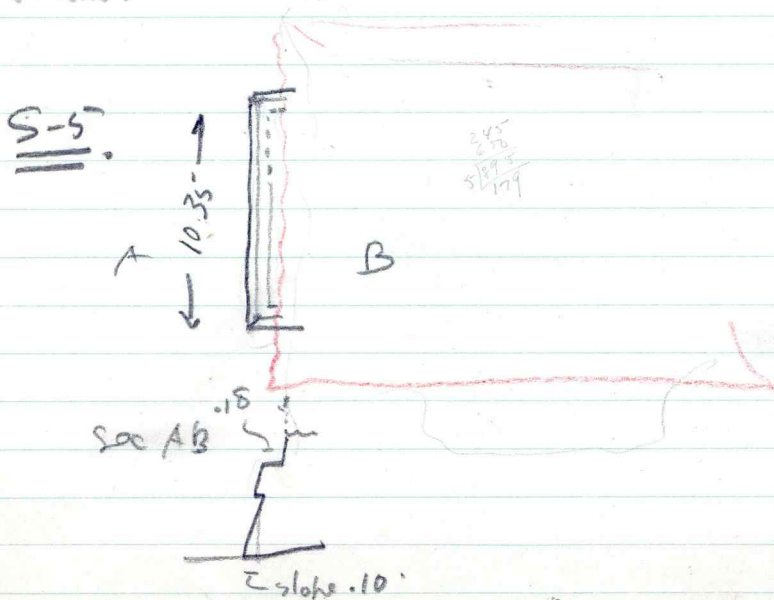
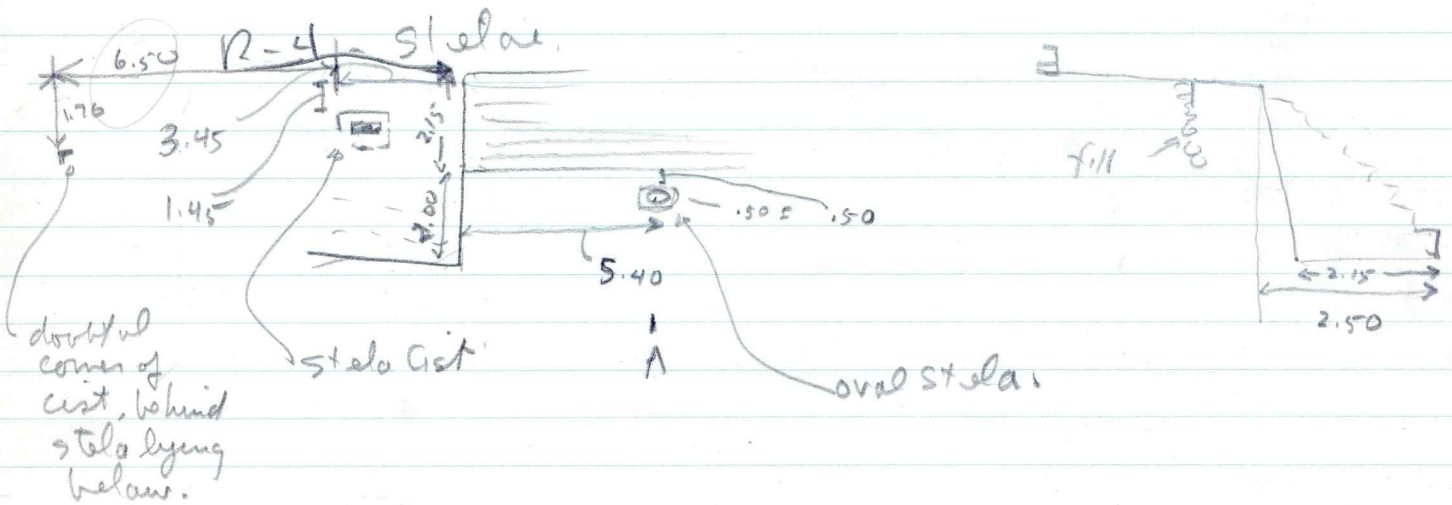
→ Z. $\frac{195}{975}$

chock List of Map changes Sheet 2.

K-5 - locate Wsg Pond c-5. (als, the other 2 if not much trouble: but they are hidden.)



O-15 } turn around this face NE.
O-16 }



075
135

Memo to TAP Changes in Map Sheet 4

420
424
460
132

Swood Baths:

- | | | | |
|------|--|---------------------------------------|----------------|
| S-19 | Reconstructed Steam Room | Pltto Platform (?) | See Rec. sheet |
| S-2 | " " " | " Plinth in front of it only (?) | " " |
| S-4 | " " " | | " " |
| R-13 | " " " | " Double Passage, opening into mound. | |
| O-4 | " " " | " (?) | " " |
| J-17 | " Passage and front of Platform at center cut out detail organised Steam room (not surely understood - probably a bench) | | " " |

R-7 - OK.

N-1 - OK.

Mogalithic Stairways

P-6 Reduce Mex. steps to 9.85 wide; center on shoulders as they are.

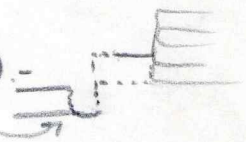
O-2 ~~so~~ OK.

T-1 OK.

R-7 OK.

R-3 - vertically cut better for wings; same width as R-7 (dotted) - run into mound? - or cut it like this?

J-6 - OK.



J-9 - complete except for steps in front.
if end walls corrected - checks in position of 1 with J-12.
Amendations checks.

J-13 - Bldg checks in position of 1 with J-9 but not with
pts ΔB_1 & ΔR_1 . Piers located (evidently from these
pts. connected to check with position of Bldg corner.
Note - wear of .95 in distance J-12 to J-13.
∴ Either J-11 & J-13 or J-9 & J-12 must be moved to
make the correction.

Correction - Force error here must be in direction -
J-9 & J-12 are allowed to stand as drawn. & J-13, J-11
pt B_1 & R_1 are moved to conform. E. corner of J-11 is
moved .25 cm S. - J-13; .95 S., B_1 = .45 S.E., R_1 = .30 S.

N.B - plinth around J-12 in complete - check also
J-11 & J-13 plinths.

J-11 - complete - check plinths.

J-10 - complete - Should niche be indicated?

J-13 - moved 1 m. South. - complete - restore sewers.

J-21 - checks approx. in position.

J-2 - Parvish et al = .65 wide N-W-SE than nine!

15/10/53
57/2.29
15/9/53
33

LS to geo data.

S. 3 - Borden Platform (1939).

$$22.7 \times \cos 20^\circ 43' + .3 \cos 20^\circ 43' = h \text{ dist.}$$

$$\begin{array}{r} .7245 \\ 50 \\ \hline .227 \end{array}$$

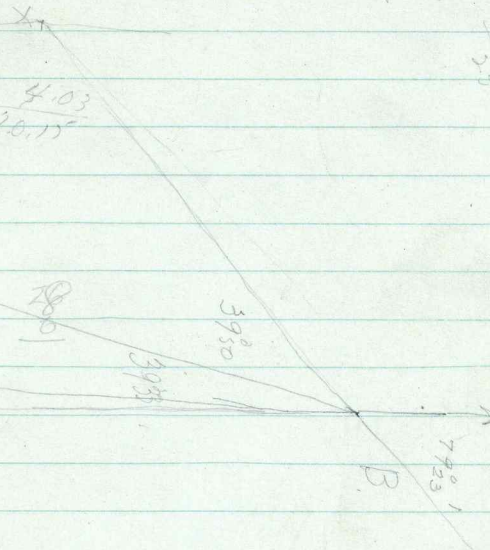
$$\begin{array}{r} 1.25 \\ 25 \\ \hline 3475 \end{array}$$

$$\begin{array}{r} .65 \\ 20 \\ \hline 130 \end{array}$$

$$\begin{array}{r} .3457 \\ .3457 \\ \hline 24299 \\ 19285 \\ 13828 \\ 10371 \\ \hline 11.930849 \\ 22.7 \\ \hline 83513943 \\ 23861698 \\ 23861698 \\ \hline 290.8302723 \end{array}$$

$$\begin{array}{r} 4.03 \\ 120.15 \\ \hline \end{array}$$

N 37 1/2 E



1.10
6.50

$$\begin{array}{r} .9356 \\ .9356 \\ \hline 26136 \end{array}$$

$$\begin{array}{r} 46986 \\ 28068 \\ 84204 \\ \hline 89534836 \\ 22.7 \end{array}$$

$$\begin{array}{r} 79 \\ 79 \\ \hline 158 \\ 158 \\ \hline 316 \end{array}$$

$$\begin{array}{r} 612741952 \\ 175069492 \\ 175069472 \\ \hline 19870383692 \\ 20.15 \end{array}$$

$$\begin{array}{r} .9356 \\ .3 \\ \hline 28068 \end{array}$$

$$\begin{array}{r} 22 \\ 20 \\ \hline 42 \end{array}$$

$$\begin{array}{r} .012 \\ 210 \\ \hline 211 \end{array}$$

$$\begin{array}{r} 57552 \\ 210 \\ \hline \end{array}$$

Stelo Placements

Not indicated times

L. 5
~~44~~

South group.

Not indicated.

Lintel 11 ✓

- ✓ R-9 NE to SW. 24 25 26 ; Lintel 11 not indicated. 4 ✓
- ✓ R-10 27 (+15)
- ✓ R-1 28 45
- ✓ R-3 SE (42) Over (29) NW (44) Lintel 11 not indicated "44" "45"
- ✓ R-35 SE to NW. ~~30~~ ~~31~~
- ✓ R-5 SW to NE 32, 33, 34; 46; 35, 36, 37; Lintel 4 not indicated.
- ✓ R-16 41
- ✓ R-11 MSS 4 + 5 (and manichs); str. 45 not indicated.
- 0-12 22
- 0-13. NW to SE, top 15, 12 } no shun. Lintel 1, 2, 3, 12, MSS 1.
- Basal female 14
- Ball of string 18

2
OK with
25
mud
17
OK
with
mud

E. group Plugs.

- NW to SE 13, 16, 17, 19, 20, 21.
- NW of Str 012 23.

Wood group

- Str. J-3 SW to NE 40, 9, 10, 11
- J-4 " " 1, 2, 3, 4, 5, 6, 7, 8; not shun 43; Lintel 13, "than" 2.
- K-5 NW to SE 38, 39. theme 1. "Lintel" 8, 9.

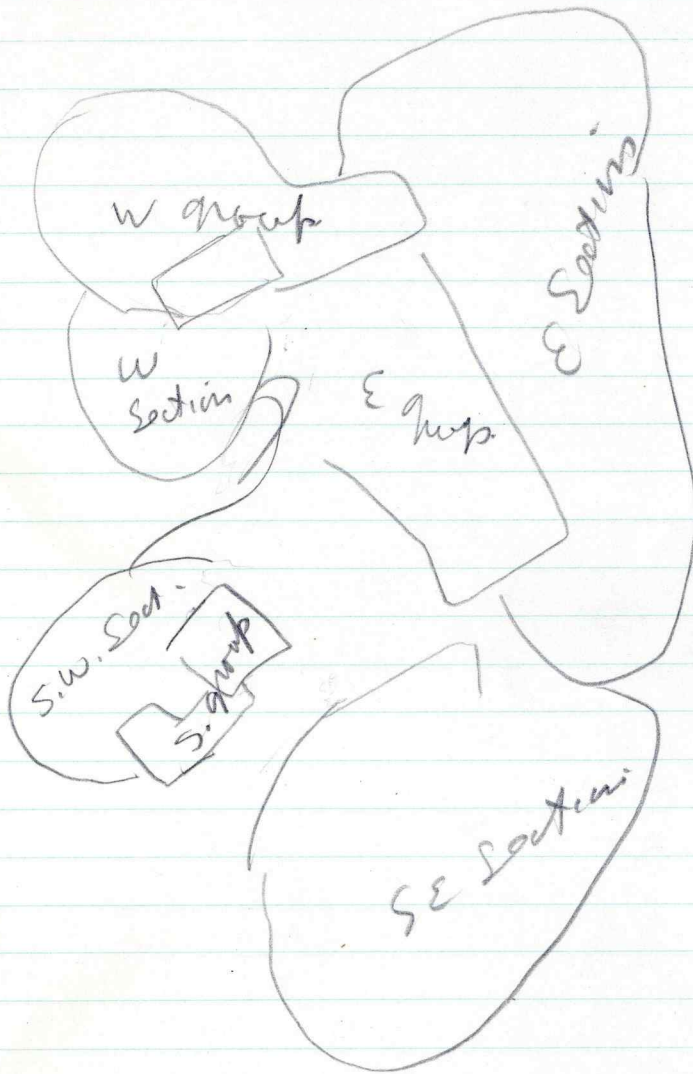
21,
OK with
59 m.

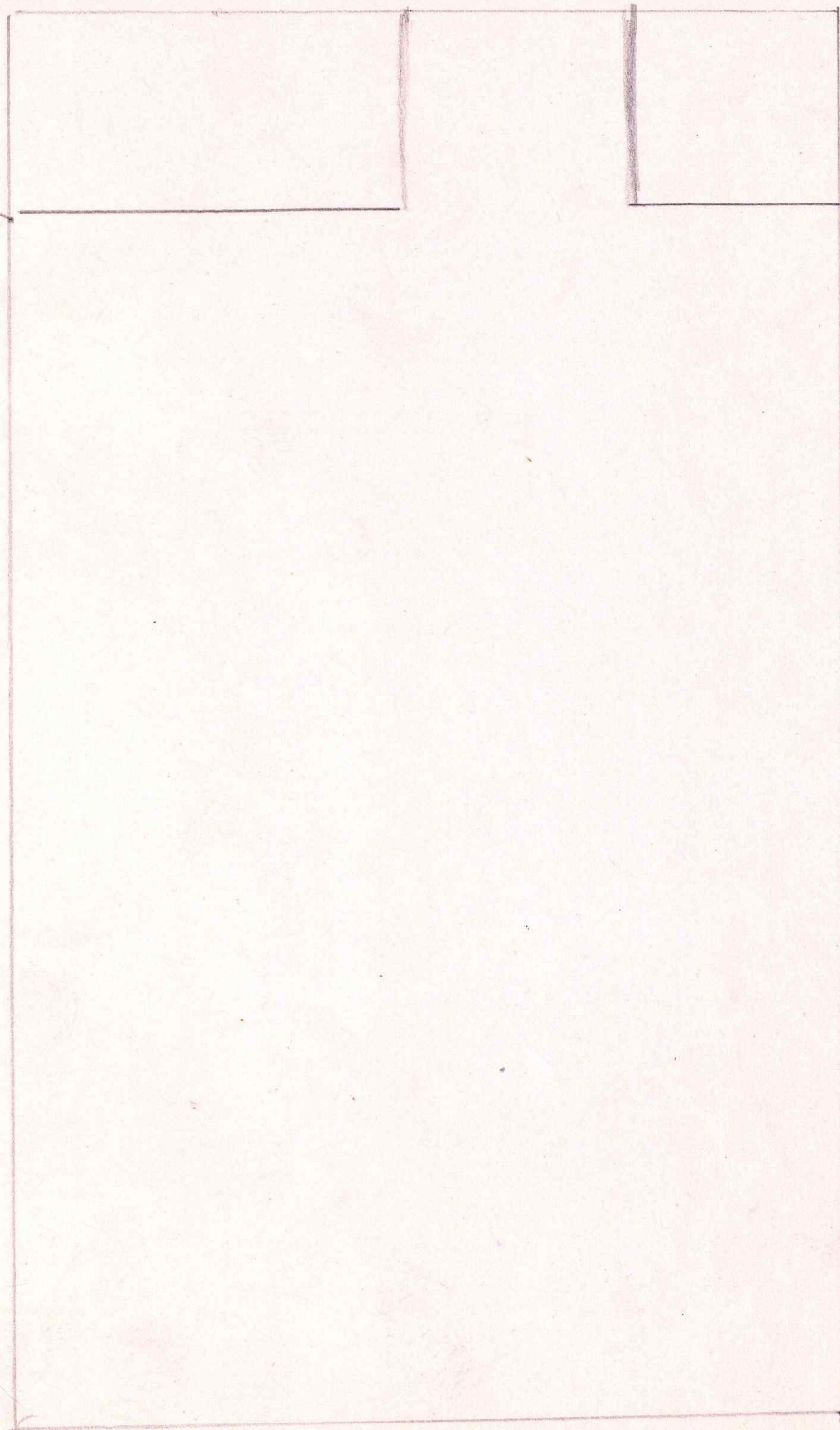
3
1
8
1
1
4
1
1
1
1

allan 1 to 5 to be numbered.

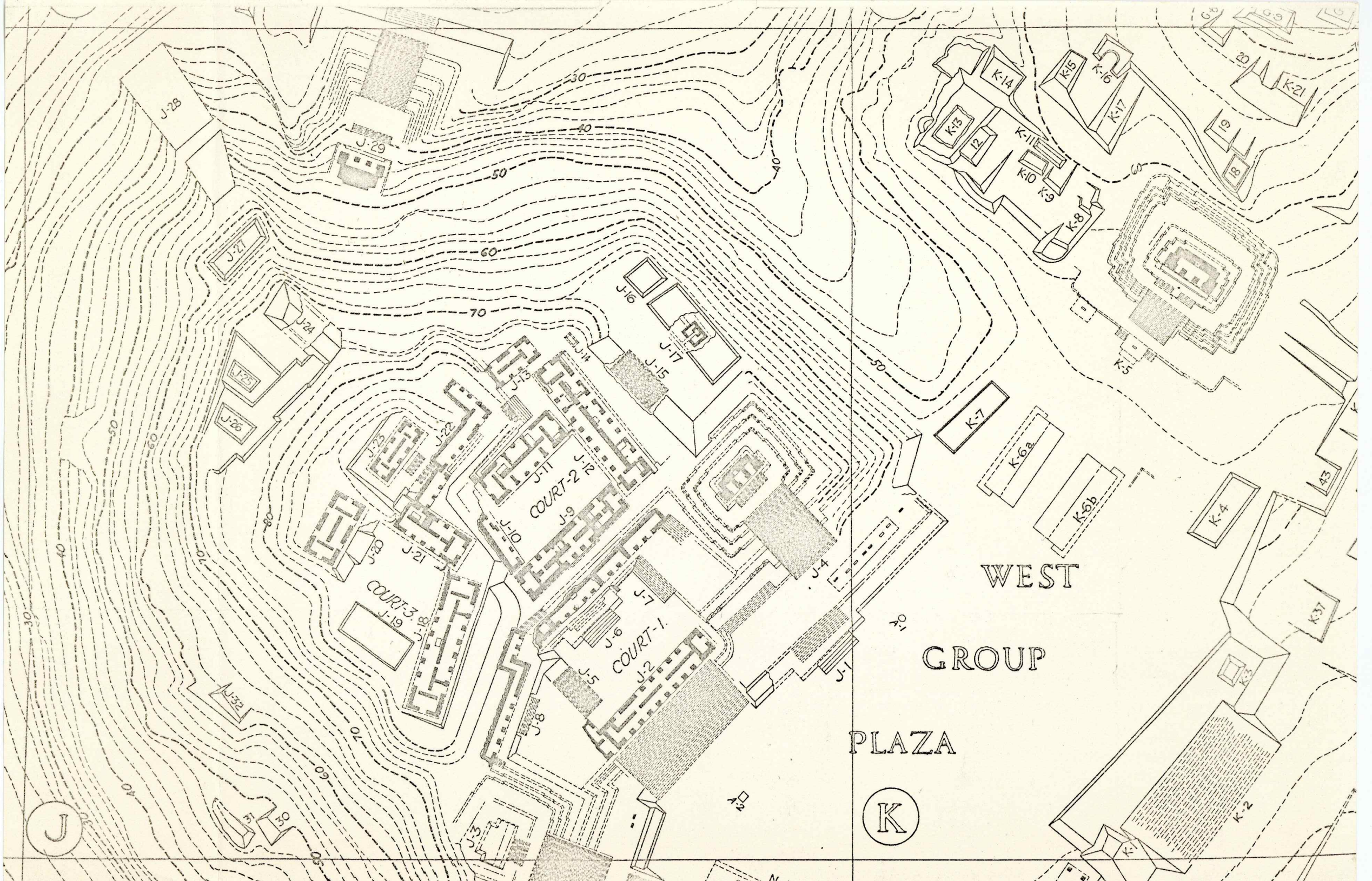
23

Nalectinis





5 Sequence of
200 Meter (656+foot) Squares.



WEST

GROUP

PLAZA

K

J

COURT-2

COURT-1

COURT-3

J-28

J-29

J-27

J-24

J-25

J-26

J-23

J-22

J-19

J-21

J-32

J-31

J-30

J-33

J-16

J-17

J-15

J-13

J-11

J-9

J-10

J-7

J-6

J-5

J-2

J-8

K-7

K-6a

K-6b

K-4

K-37

K-2

K-14

K-15

K-16

K-17

K-13

K-12

K-11

K-10

K-9

K-8

K-19

K-18

K-21

K-20

K-22

K-23

K-24

K-25

K-26

K-27

K-28

K-29

K-30

K-31

K-32

K-33

K-34

K-35

K-36

K-38

K-39

K-40

K-41

K-42

K-43

K-44

K-45

K-46

K-47

RUINS OF PIEDRAS NEGRAS

DEPARTMENT OF PETEN
GUATEMALA

PARTIALLY COMPLETED PLAN OF PRINCIPAL GROUPS
ELDRIDGE R. JOHNSON EXPEDITIONS, 1931-1932
THE UNIVERSITY MUSEUM UNIVERSITY OF PENNSYLVANIA

SURVEYED and DRAWN by FRED R. PARRIS ARCHITECT

A	B	C	D
E	F	G	H
I	J	K	L
M	N	O	P
Q	R	S	T
U	V		

— SEQUENCE OF
200 METER SQUARES —



TRUE
NORTH
DECLINATION - N 0° 01' E - BY OBSERVATION ON POLARIS
JUNE 3 1932. WITHOUT MERIDIAN CORRECTION -
CONTOUR INTERVAL - 2 METERS -

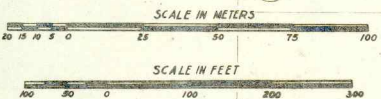


TABLE OF EQUIVALENT STRUCTURE DESIGNATIONS
USED BY MALER, 1901, MORLEY, 1920, AND
BY UNIVERSITY MUSEUM ON THIS MAP

MALER	MORLEY	UNIV. MUSEUM
TEMPLO DE LAS 8 ESTELAS	I	J-4
TEMPLO DE LAS 3 ESTELAS	II	J-3
TEMPLO DE LAS 10 ESTELAS	III	O-13
TEMPLO DE LAS EST 22, 23	IV	O-12
ENTRADA DE LOS APOSENTOS	V	P-7
TEMPLO DE LAS EST 24-27	VI	R9 & R-10
TEMPLO DE LA EST 28	VII	R-1
TEMPLO DE LA EST 29	VIII	R-3
TEMPLO DE LA EST 30	IX	R-4
TEMPLO DE LAS EST 32-37	X	R-5
LA CASA GRANDE		J-9

— KEY TO GROUND PLANS OF BUILDINGS —
 - - - - - HYPOTHETICAL - DESTROYED
 OR NOT EXCAVATED -
 ———— OBSERVED IN
 POSITION —

Refuse Pit for M.B.

(K) north of ...



(R) ... of ... (not the ...)

(S) ...

South M. ...

oval base of stela (?) - 3 m ± E of
- present location of stela 26
- in rubble fill. stands with
broken white surface at or near level
with floor. 15 cm below horizon.
45 x 33 cm, sides rounded.

all P.A.

Polychrome ...
...
...
...

Central ...

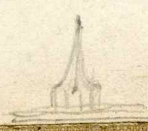
...
...

Storage ...

Inta:

...


...



Memo to Draughtsman, new 'Third Edition) Piedras Negras Map.

The "Third Edition" ^{drawing} is on linen, and is what we are now completing. Called simply "drawing".

Sources for the stuff to complete are:

- 
- A. A rough pencil tracing, incomplete, of the above, with things added on it.
 - B. A linen tracing, the Parris drawing, for the second edition. This has some old notes on it to be disregarded, and others to be used. The latter are initialed "L.S.".
 - C. A published proof of the 2nd edition at 1/2 scale, which is ~~is~~ from the Parris drawing. This is the scale to which we will reduce again.
 - D. The large Original Drawing in pencil, from which the Parris drawing was traced and then, after additions and changes, the pencil tracing and third edition drawing were traced. (*WMO be needed, I hope.*)
 - E. This set of notes of what is to be done, usually referring to one of the above. There are some ⁽⁸⁾ small special tracings at the end, identified by Structure (same as "mound") number, to make clear a few corrections. I would like to see these in pencil on the drawing, if possible, before inking.

Note: A good deal of lettering can be traced directly from the Parris Drawing, though not always in the same place; the Parris drawing fixes the lettering sizes and styles, which should be followed, unless changes are first suggested and approved.

~~I think a good deal of the Parris lettering was with a mechanical guide, which we have in the museum, and where this is so, the guide should be used. This is a new edition of an already published map and we don't want to change our style except for good reason.~~

First thing to do: Add the grid, cutting the area into squares. A good deal of this can be traced directly from Parris drawing, but additional squares must be constructed. In doing this take a look at the pencil tracing and break-off square lines to leave plenty of room for legends.

and in red on pencil tracing.

Omit the letters in the squares, shown on Parris and 2nd edition. Make sure the grid lines come out about as they do on pencil tracing, with reference to the mounds; but exact correspondence isn't ~~expected~~ expected. Mounds are to be numbered by the squares they are mostly in, or at least partly in. If a correctly constructed extension of the grid makes any significant change in this respect, check with me before proceeding with mound-numbering.

Second thing to do. Add the mound numbers. Many of these can be traced directly from Parris drawing, but in doing so, check with pencil tracing; a few have been moved slightly. Follow pencil tracing in this respect when it differs.

Get mound numbers not on Parris drawing from pencil tracing, placing them about as indicated. There won't be mounds on our Third Edition for three of the numbers in Square V. Add two of them from Parris drawing and a third oval one from Original drawing. They are indicated on the pencil tracing and were omitted by mistake. (v-24, v-25, v-23). Where space calls for it, the letter in front of the mound-number is simply omitted. Pencil tracing should be followed in this respect.

Special
Tracing
v-23

Squares I, J, K and L.Lettering

- ✓ "Bur.6", Square L, as indicated on drawing (i.e. final 3d Edition drawing we are completing)

Line-work

- ✓ Add omitted mound lines per pencil tracing, on mounds J-1.
- ✓ Fill in rest of stair reconstruction with broken-line steps, Str. J-8.
- ✓ Add stela platform (out of line), per special tracing, Str. J-3
- ✓ Complete platform at top (in broken lines) per special tracing, J-3 top.

Squares M, N, O and P

- ✓ "Spirals", Square N, per pencil tracing.
- ✓ Add omitted mound line, Str. N-18, per pencil tracing; same, Str. P-18.
- ✓ At Str. O-14 take out part of mound lines and complete contour lines as indicated in red on Special tracing O-14.

Squares Q, R and S

- ✓ "Cut Stone Block" per pencil tracing
- ✓ "Mounds", in Square S per pencil tracing.
- ✓ Add monument outlines near Strs. R-5 and R-9, as indicated on drawing, I.E. draw over my pencil lines.
- ✓ Add stela platform, per special tracing R-4
- ✓ Complete contour line northeast of Str. R-11, as indicated in pencil on drawing.
- ✓ Change part of heavy contour line to light solid mound line per special tracing R-22.
- ✓ Change step, front of building, per special tracing R-3 and notes made there; erase stela outline at bottom and move to top between new step and stairway, per same.

Squares T, U, V

- ✓ "200 meters to Cliff Carving", with arrow near V-1, per pencil tracing.
- ✓ "Maler's Caves", with arrows east of U-20, per pencil tracing
- ✓ "Mounds", in Square V near V-1, per pencil tracing.
- ✓ Arrow, southeast of Str. V-1, per pencil tracing
- ✓ Arrows, near U-20, per pencil tracing.

Main Legends for Map .(In placing be sure not to widen or lengthen the rectangle which would enclose all the drawing. Such a

Upper Left , per Pencil tracing.

rectangle would be about 53 inches, east to west. Try to keep the legends about 2 inches inside these limits, so drawing could be trimmed that much without loss of legend.)

" // Ruins of Piedras Negras

Department of Peten, Guatemala
1st, 2nd & 3d Eldridge R. Johnson and subsequent expeditions, 1931 - 1939
The University Museum, University of Pennsylvania
Third Edition, as of end of 1939 season.

Contour lines and schematic mound forms after Parris
Restored structure plans after Cresson, Godfrey, Mason,
Parris, Proskouriakoff and Satterthwaite.
Drawn by Proskouriakoff // "

NB. See Parris drawing for letter styles and sizes; much of this legend can be traced from that.

" Key-to-Structure

Upper Right, per Pencil tracing.(See note above respecting placement).

" Key to Structure plans

Hypothetical - destroyed
or not excavated

Observed in position

Key to Stelae Positions

Probable Maya Positions

Sure ^Maya Positions

Approximate Positions of
Stelae 24 and 32 in 1931

See text for Stelae numbers.

Contour Interval 2 Meters or
6.56 feet.

Key to Sequence of
200 meter (656 foot) Squares

(diagram of squares
here; Squares A to V can be
traced from Parris drawing;
but add Square Z above C,
and W, X, Y at bottom. Same
style and size of letters).

Fund
OK

Fund
OK

Main legends - continued.

Lower Left

Can all be traced from Parris drawing, with omissions noted:

~~Omit~~ "contour interval" etc. which is moved to upper right.

~~Omit~~ "Key to ground plans" etc., ditto.

Include the rest, to wit:

Compass bearing ^{and} true north, line-work and lettering.

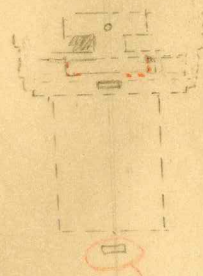
author note ~~Scales~~ Scales in feet and meters, line work and lettering.

~~Table~~ Table of Equivalent Structure Numbers (legend for it and the table itself, which includes line-work.)

All notes thus far refer to the map. There is also a Parris linen drawing of 2 cross-sections.

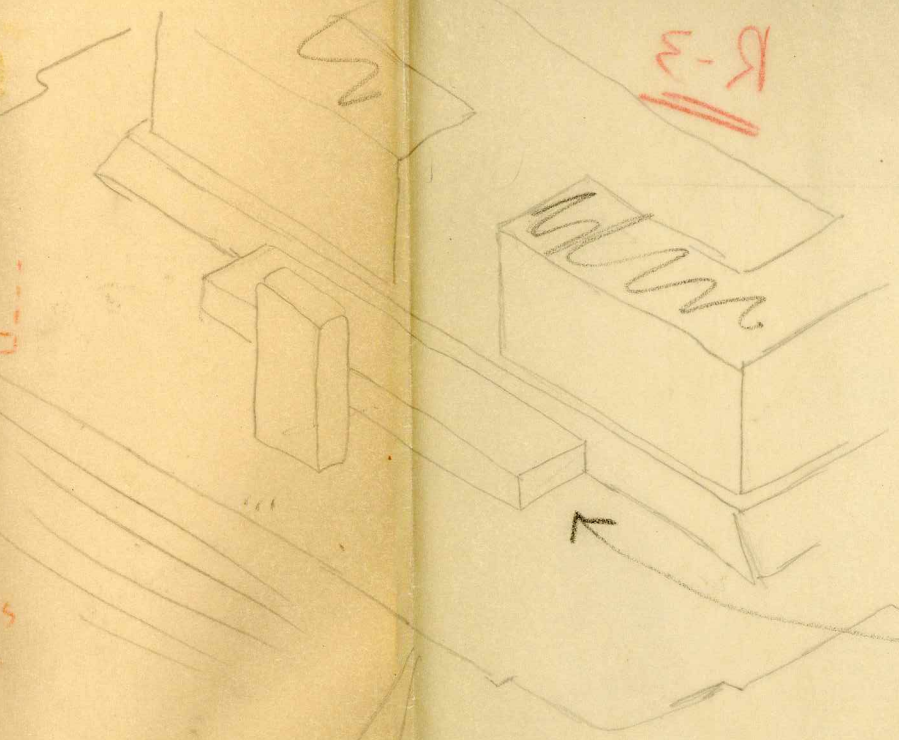
Add to the legend at lower left, last line, so it will read as follows: "Line Drawings are elevations of mounds or buildings as of 1932 season".

R-3



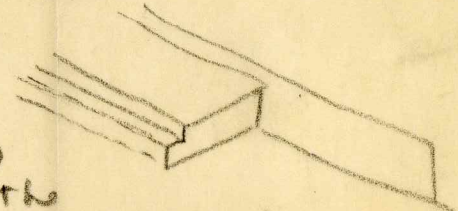
white out and
move to
top as
indicated, between
new step and
edge.

white out
red part and
finish with
lines a+b,
moving them
opposite
end walls
of room.



R-3

Must change present plan
of double steps in front of
temple which is now
reflecting this:
by eliminating
the lower step
and starting the
whole (with broken lines)
to this

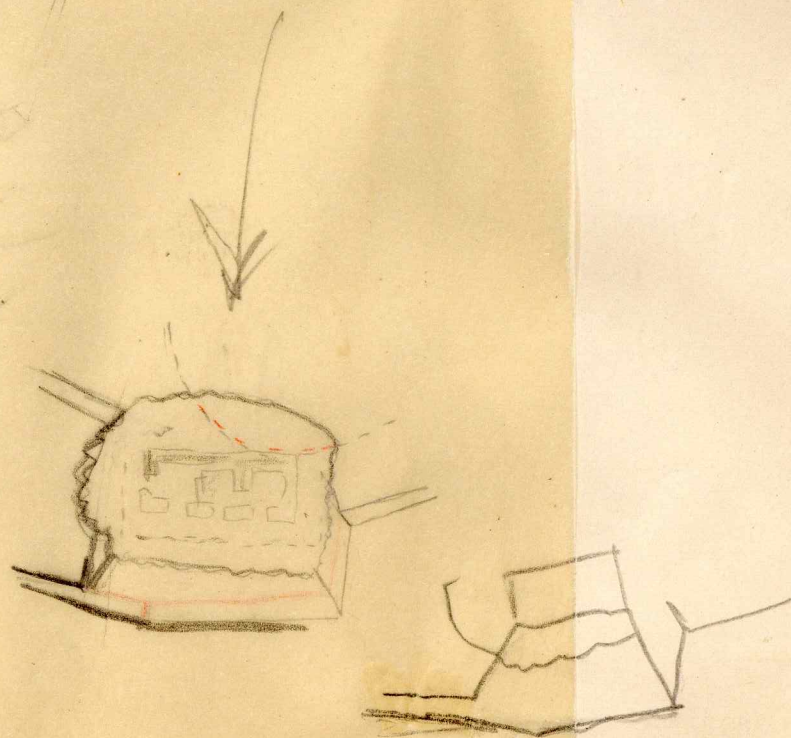


then must place stela
in front of this simple
step, instead of at the
bottom.

White out what is
shaded in red.

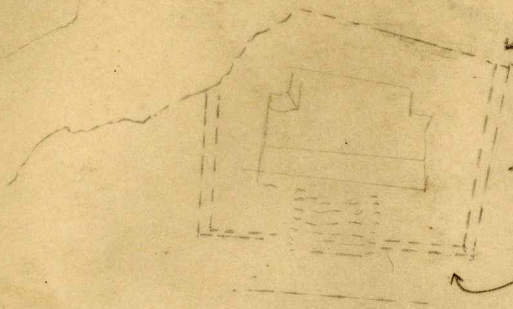
add wavy line
and construction
lines to it to
show height of
the reconstructed
plan.

F-4



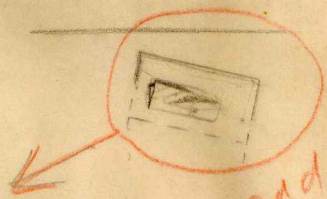
J-3 (top)

Finish off
omit the
blot from
lines

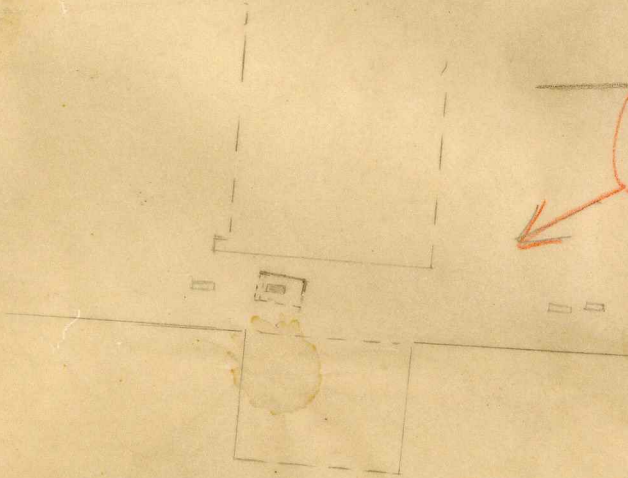


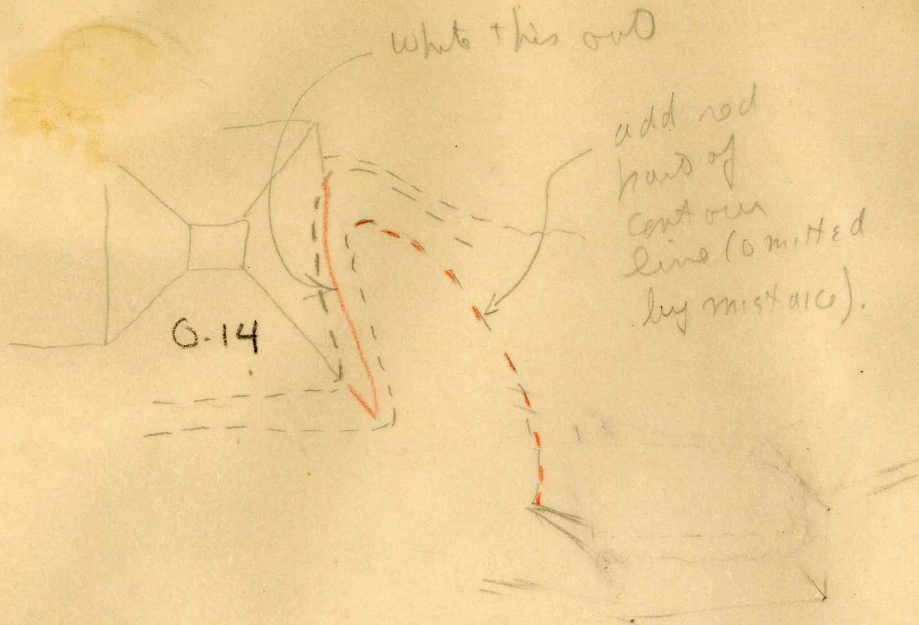
J-3

J-3

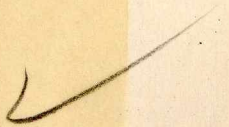


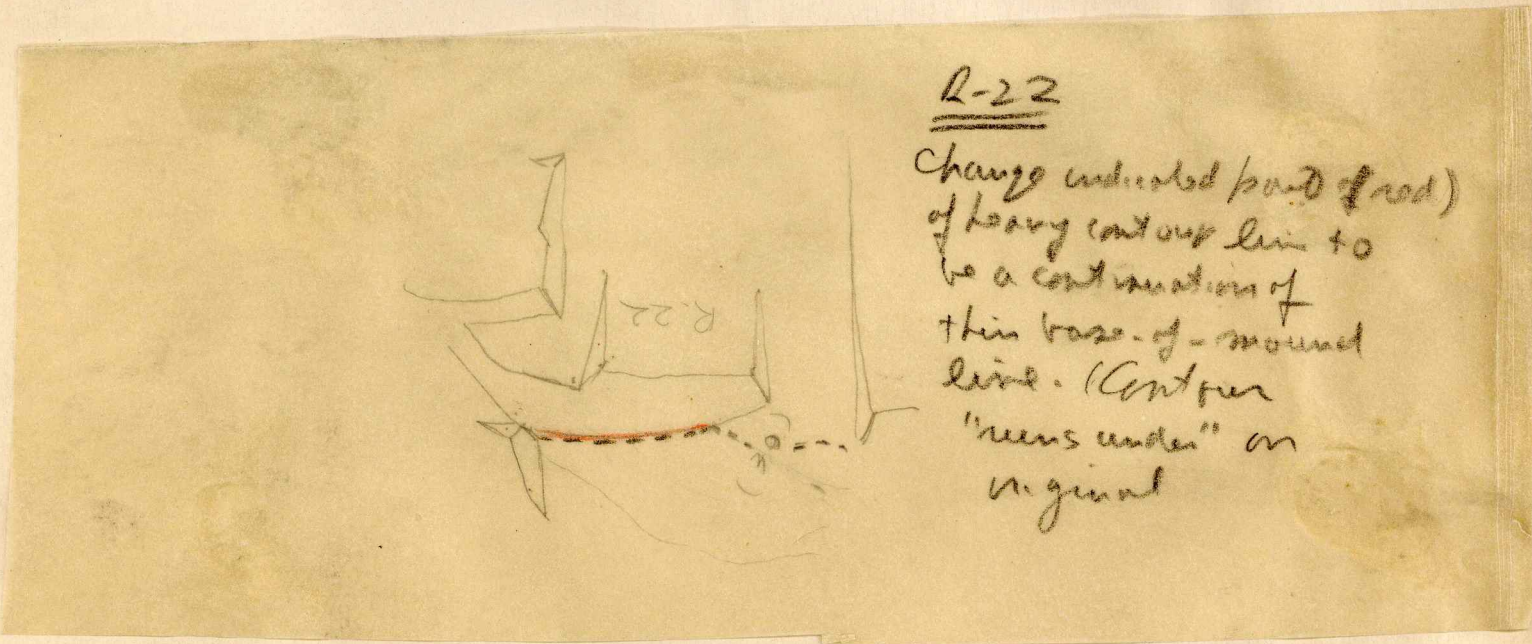
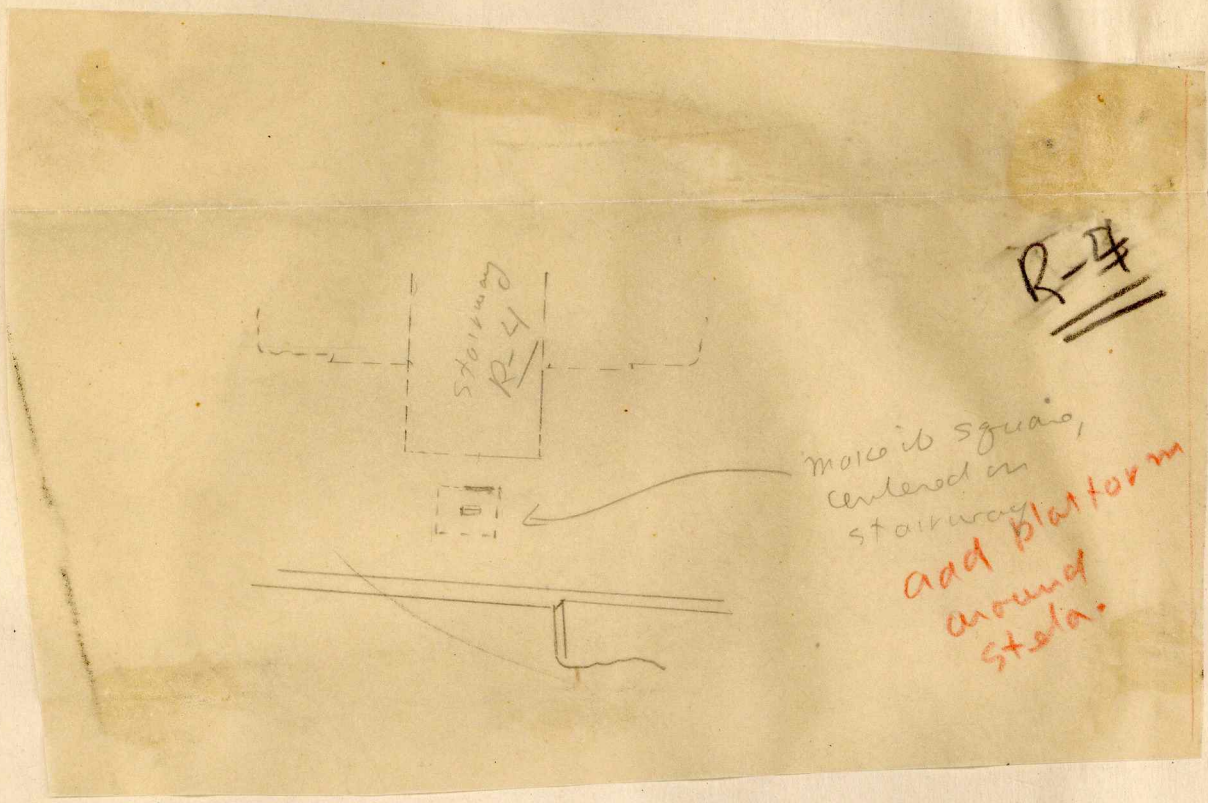
add
platform
around
stela.
It is
copied
as shown



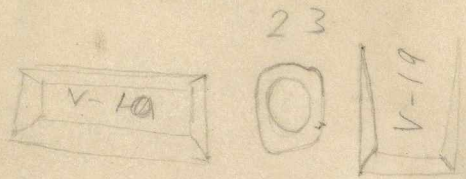


0-14





V-23



add mount v-23

Pen 6529 (Monday)

Dr. Patterthwaite

Structure Names

Square Z.

- Z-1
- Z-2
- Z-3
- Z-4
- Z-5
- Z-6
- Z-7

OK to no.

total on orig. + ink tr.

Square A

name.

checked with original.

Square B

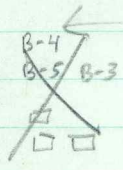
- B-1
- B-2
- B-3
- B-4
- B-5
- B-6

OK to no.

Try to indicate ref. to 3 little ones.

total of 3, checked with original + ink

Had to check original ~~here~~ my



Square C

- C-1
- C-2
- C-3
- C-4
- C-5
- C-6
- C-7
- C-8
- C-9
- C-10
- C-11
- C-12
- C-13
- C-14
- C-15
- C-16
- C-17
- C-18

OK to no.

months of hand. trans. checked with orig.

must add a no. - y so "Pasquetta"

Square C - cont'd.

- C-19
- C-20
- C-21
- C-22
- C-23
- C-24
- C-25
- C-26
- C-27
- C-28
- C-29
- C-30
- C-31
- C-32
- C-33
- C-34
- C-35
- C-36
- C-37
- C-38

add 1

check with line in front OK h.p.

check line to rear OK h.p.

total 38, OK on orig + transys.

Square D

- D-1
- D-2
- D-3
- D-4
- D-5
- D-6

no of nos, (6) checked with original. OK M No.

Square E

- E-1
- E-2

no of nos (2) checked with orig.

OK M No.

Square F.

- / F-1
- / F-2
- / F-3 mds
- / F-4 checked
- / F-5 with
- / F-6 orig.
- / F-7
- / F-8
- / F-9
- / F-10
- / F-11
- / F-12
- / F-13

check with mds.

add way line + checked.

OK to no.

Square G.

- / G-1
- / G-2
- / G-3
- / G-4
- / G-5 mds
- / G-6 checked
- / G-7 with
- / G-8 nig.
- / G-9
- / -10
- / G-11
- / G-12
- / G-13
- / G-14
- / G-15
- / G-16
- / G-17
- / G-18
- / G-19

checked with mds.

group.

OK to no.

Square H.

- / H-1
- / H-2
- / H-3
- / H-4 mds
- / H-5 checked
- / H-6 with
- / -7 nig.
- / H-8

checked with mds.

OK to no.

Square I.

OK true. No mds checked with nig.

Square J.

- 14 } J-1
- 22 } to
- 31 } J-29
- 32 } J-30
- 34 } J-31
- J-32

See Published Map.

OK for mds.

mds checked Chen-Pan Pros.

Squares K,

published map

K-2

- / K-1
- +0
- / K-7
- / K-8

Gen. OK with
Parisian
demands.

K

- / K-9
- / K-10
- o K-11
- / K-12
- / K-13
- / K-14

- / K-15
- / 16
- / 17
- / K-18
- / K-19
- / K-20
- / K-21

OK
to
no.

22

- / K-22
- / K-23
- / K-24
- / K-25
- / K-26
- / K-27
- / K-28

- / K-29
- / K-30
- / K-31
- / K-32

wrong line.

- / K-33
- / K-34
- / K-35
- / K-36
- / K-37

- / K-38
- / K-39
- / K-40
- / K-41

OK
OK

- / K-42
- / K-43

Squares L,

- / L-1
- / L-2

mascha,
Gen-Pan-
Prusk

OK to
no.

Square m

No Mounds

Squares N,

- / N-1
- / N-2
- / -3
- / -4
- / N-5

Mds
check,
Gen with
mig;
with
Prusk.

- / N-6
- / N-7
- / N-8

OK
to
no.

- / N-9
- / N-10
- / N-11
- / N-12

- / N-13
- / N-14
- / N-15
- / N-16
- / N-17
- / N-18

No Mounds
(15)
check

Square O

- ~~0-1~~ to ~~0-18~~ *Inds down, here with Paris orig. with Pros.*
- Note shift "0-4" to front of platform, on the court.*
- ~~0-19~~
- ~~-20~~
- ~~0-21~~
- ~~-22~~
- ~~23~~
- ~~0-24~~
- ~~-25~~
- ~~-26~~
- ~~-27~~
- ~~-28~~
- ~~-29~~

OK to No.

Inds down

Square P

- ~~P-1~~ to ~~P-7~~ *Per P. 1. Map.*
- ~~P-8~~
- ~~P-9~~
- ~~P-10~~
- ~~P-11~~
- ~~P-12~~
- ~~P-13~~
- ~~P-14~~
- ~~P-15~~
- ~~P-16~~
- ~~P-17~~
- ~~P-18~~
- ~~P-19~~
- ~~P-20~~
- ~~P-21~~
- ~~P-22~~
- ~~P-23~~
- ~~P-24~~
- ~~P-25~~
- ~~P-26~~
- ~~P-27~~

Gen. P. 1. Inds down; Gen. Pros.

OK to No.

Inds down 27, checked.

Square Q

- / Q-1
- / Q-2
- / Q-3
- / Q-4
- / Q-5

choard,
Germ + Pans;
& Pans.
OK to Mrs.

Square R

R13

- / R-1
- / R-16
- / R-17
- / R-18
- / R-19
- / R-20
- / R-21
- / R-22
- / R-23
- / R-24
- / R-25
- / R-26
- / R-27
- / R-28
- / R-29
- / R-30
- / R-31
- / R-32
- / R-33
- / R-34

Per hbl: dca
mup: maw
"R-2" to R-4
to near

OK for Mrs.

Mds chow;
Germ + Pans;
& Pans.

no mds
chow (34)

Square S

- / S-1
- / S-4
- / S-5
- / S-6
- / S-7
- / S-8
- / S-9
- / S-10
- / S-11
- / S-12
- / S-13
- / S-14
- / S-15
- / S-16
- / S-17
- / S-18
- / S-19
- / S-20
- / S-21
- / S-22
- / S-23
- / S-24
- / S-25
- / S-26
- / S-27
- / S-28
- / S-29
- / S-30
- / S-31
- / S-32
- / S-33
- / S-34
- / S-35
- / S-36
- / S-37
- / S-38
- / S-39
- / S-40
- / S-41
- / S-42
- / S-43
- / S-44

Per hbl: dca,
shifting S-2 +
S-4 to near.

Mds chow;
Germ + Pans;
& Pans.

S1 to S4
who make d
big Pans
- dca with
Phil + dca.
Keep them.

OK to Mrs.

not chow
S44.

S-32

S-34

Square T

- T-1
- T-2
- T-3
- Soc. Rocks.

Miscellaneous
Came with
Pass. & Per.

OK to
No.

Square U

- U-1
- to
- U-9
- U-9
- U-10
- U-11
- U-12
- U-13
- U-14
- U-15
- U-16
- U-17
- U-18
- U-19
- U-20
- U-21
- U-22
- U-23
- U-24
- U-24
- Centroll-26
- U-27
- ~~U-28~~
- Coiba Trce.

RePublished
maps, with
changes
indicated
for U-6, 8 & 9.

Miscellaneous
A. with Pass.
& Perms.

OK
to
No.

Square V

- V-1
- to
- V-3
- V-4
- V-5
- V-6
- V-7
- V-8
- V-9
- V-10
- V-11
- V-12
- V-13
- V-14
- V-15
- V-16
- V-17
- V-18
- V-19
- V-20
- V-21
- V-22
- V-23
- V-24
- V-25
- V-26
- V-27
- V-28
- V-29

Republished
maps (shift
V-1 as
indicated).

A. & Pass. chd.
A. & Pass.
add one
more
to Passk.

and 2
sub
mes,

OK
to
No.

Pub
on
✓
✓

V-30

V-30 (omitted to
number)

Square W

- W-1
- W-2
- W-3

OK
to
No.

Tyhol

Final Check List of Work on Map Lines.

①

Lettering: Map

- ✓ Number Mounds - from published edition and/or Pencil Tracing.
- ✓ Number Altars 1 to 5 from Published edition + Altars 5, which is the round altar front of S.V. 0-13.
- ✓ Stelae - done number.
- Number Contour lines - from published edition as far as it goes; from orig. pencil maps for the rest. per pencil on drawing (Proof)
- ✓ Letter † in Sq. C. - "Modern Burial." *
- ✓ Letter "BUR. 6" in Sq. L. (indicated on line tracing).
- ✓ Letter arrow in Square V. per pencil tracing.
- ✓ "200 Meters to Cliff Carving."
- ✓ Letter "Mole's Cave" per Pencil
- ✓ Letter "Spirals" in Sq. N. per pencil tracing
- ✓ Letter "Cud Stone Block" in Sq. Q. per pencil tracing.
- Letter "Northwest Group Plaza, South Group Plaza" per pencil tracing; "West Group Plaza," "East Group Plaza" South Group Court,
- * NB Quotation marks for us - had to be put on map.

- add monuments. (outlines).
- ✓ Near S.V. R-9 } as indicated in
- ✓ " " R-5 } pencil on tracing.
- add Mounds
- ✓ From Published edition and 2 Broken-line mounds front of S.V. V-1. (v24+25 on pencil tracing).
- ✓ From Orig. Pencil map:
 - ✓ 1 oval mound (v. 23 on pencil tracing)
- ✓ Add bars in Square C. †
- ✓ Add arrow in Square V per pencil tracing.
- ✓ add arrows in Square
- ✓ grid - from original map. Suple
Compass bearings

Southeast Section per published map.

✓ Letter "mounds"
in Square S, her
pencil tracing

✓ P. No, Square V.

✓ Add Stela Platform, Str J-3
her special tracing.

✓ Finish top platform, her special tracing
Platform, Str. R-4.
her same.

✓ Change steps front of Temple,
move stela, her
special tracing + notes
thereon, R-3.

✓ J-1 - add omitted tenac line.

✓ J-8 - finish horizon stain lines to top.

✓ Near G-13 " " " lines

✓ G-17 " " " "

✓ P-18 " " " "

✓ M-18 " " " "

✓ O-14 Add " " Contour line, white
out indicated hand of mound
lines, her special tracing.

✓ Square R - complete outline near S & R 11
her pencil on Proj. drawing.

✓ R-22 - Change hand of heavy contour
to light mound-line, her
special tracing.

✓ F-4

Legends: Lower left.

Copy from Orig. Map:

✓ Compass Bearing.

✓ Scales (feet & meters).

✓ Table of Eggar's Structure Nos.

Lower
left.

Cortez Planonij (3)

Add to legend:

Line drawings
and elevations of mounds
or buildings as of 1932
Season

Key Legends

Upper right.

Labeled Key to Squares.

✓ Add Square Z, above
Square C.

Label it: "Sequence of
200 meters (656 foot)
Squares"

(See published Map. (reduced 1/2).

Key legends,

Upper left.

Map of
Redras Negras ^{See Hansen}
Peten, Guatemala. ^{Tracing}

Second Edition, as of 1939 Season.

✓ Contours and Mounds after
Parris, ^{Restored} Ground Plans after
Proskopyakoff, Godfrey,
Satterthwaite and Muson.

- sure positions of stelae
- ▬ restored stelae positions
- approximate present stelae positions.

see Hansen
Tracing

Remaining work on the Map - sheet 1 (also sheet 2).
additions + changes

Line work

Two mounds ~~of~~ v-1 group.

Stals 3 ~~1~~ + 2 ~~1~~

→ Sod lines (from original).
~~no - text.~~

Correct Stal ~~Plot?~~ ME

St. J 1 - add line

St. J 8 - fix ~~base~~ dist (?)

R-3 - Move ~~stals~~ 29 to comp
top fund.

Change Cont. Line
not running ~~from~~ 0-15?
(white out lines?).

Do something with way lines
at I-20. no

Sections

add to elevations ~~to~~ "as of
1932 season, not as
known later".

~~"Carved cliff" area
herbert tracing~~

~~Mohr's line.~~

~~Bill's tunnel~~

~~Wade's cut.~~

Yellowing

Nos. to be assigned.

Nos. ~~0-19~~ ✓

R- (last no. for Plot of R2-4).

South Group ~~Plot~~

~~North~~ Section

South Edge Section

Northwest Group. ~~Plot~~.

Remaining Work on Map: (sketch in this).

Locate and indicate modern grave, NW Group (from Parris Orig. map)

Squid
letter. D

Locate Stela 23 (fallen) LS to indicate
" " 24 (fallen) "

Two small mounds front of V-1 (Trace from Parris original). (draw them from orig).

add 0-19
add R- (?)
add

Structure Nos. (between 200 and 300 letter-numbers) as J-1, J-2, etc.)

Altar Nos. (A-1 to A-5)

Contour interval nos. - locate + put in.

Grid lines

Grid diagram

Scale

Oriantation (True and Mag. N.)

Stela Number Table (to be worked out by LS and lettered on map).

No-Text.

Preliminary Necessity

(1 cm = 10 m.)

Determine scale of reproduction: Should remain 1 to 1200, as used by Morley. This is as small as practicable if details are not to be lost; It appears to be more or less standard for Carnegie, with whose numerous maps it will most often be compared; and permits scaling without proportional dividers.

The length, but not the width, is much longer than the first edition.

We should check with printer on

- a. Size and proportions, and foldability of available sheets. The width as well as length of sheet should be known in laying out legends etc.
- b. Additional cost, if any, of using this scale.

- c. Consider possibility of (and possible desirability) of printing two plates, one at 1/2000 covering ceremonial groups; another at 1/500 covering whole map. This would require somewhat larger lettering, and appropriate placing of explanatory lettering.

1 cm = 5. m (orig)
1 " = 10 m (1st ed)
= 1 to 1000

Notes on Scale for P.N. Map.

— strictly $1.36 = 53\frac{1}{2}$ "

The Prosk. Map measures about ~~1.20m~~ 2.80 x 1.40 , the scale being 1/5000

At 1/1000 it would require a sheet 1.40 x .70 (or greater in width, as desired).

Morley uses 1.00 x .90 in his Plate 179
" 1.15 x .50 " " " 181.

The last plate folds in and out with great ease.

The Morley ed. of P.N. Map, at desired scale, is on sheet 1.06 x .73.
Using same borders and scale, new ed. would be 1.45 x .75 (apprx.)

Two extra folds, vertically, would do it for his page-size.

$8\frac{1}{2} \times 11$ "

Folds at ~~8x11~~ (letter size), surely the minimum page-size we will use:

1.40m = 55"; 5x11 = 55; no allowance for edges; 6" folds ample. (vertical).
.73m = 28.75"; 4x $8\frac{1}{2}$ " = 34"; over 4" " " ; 4" " " (horizontal).

Conclusion: I think it is clear that the entire map can be published at 1/1000, and folded into an $8\frac{1}{2} \times 11$ " or larger publication without undue inconvenience:

5 instead of 3 horizontal creases as in Morley
3 vertical creases as in Morley

He used 3 and 4 creases in his Plate 179; we need 1 more than that.
Dr. Mason agrees the ~~29~~ 29x55" (approx.) plate would not be unduly clumsy: it is needed to avoid sacrificing details shown in relation the whole surveyed area.

Legend should be placed for the narrow size.

Only question is whether plate of this size is prohibitive in cost.

Map as done is 53" x $115\frac{6}{8}$ "

Reduce 1/2 26 1/2" x $57\frac{7}{8}$ " call it 58"

J.A.M.

Satterthwaite

May 21, 1943.

Plates for Introduction, P.N. publication on Architecture.

Final drawing is
115 3/4" =
58 1/4 @ 1/2
5.3"
25 1/2 @ 1/2

I think there is no question but that the proper scales are as follows:

Map: Line Drawing, now at 1/500, to be printed at 1/1000 (see attached memo as to desirability and practicability of this scale.

On sheet about 29 x 55 inches, to be folded in with 3 vertical, 5 horizontal creases.

Finished Map
1.34 = 52 3/4"
by
2.942 = 115 3/4"

Map-Sections: One Line Drawing, now at 1/500, to be reduced to 1/2000

On sheet about 15 inches by longer dimension of the text page, to be folded with one vertical crease. This will scarcely stand further reduction. It is a great aid in trying to understand the Maya problems and solutions of assemblage, and should not be omitted. Not published by Morley.

It corresponds with the 1852 map, not with that now to be published; but with suitable notation serves its purpose just as well.

Present 5.13"
w 5 5/2"
x 3 1/4
@ 1/4 = 4 1/8 5/8 1/4 + 1 = 14 5/8"
4 3/2 1/16 1 8/16 1/4 = 4 1/8"

or a little larger

Acropolis Restoration One half-tone plate, full-page (frontispiece?). 5x7 inches/

It is time we published this. It belongs with the map because it vitalizes an important part of it; reading the map permits identification of particular buildings in the restoration. It also belongs in the Introduction as a visual statement that the structures we must describe one at a time were parts of an organized whole.

I have written Kidder asking the size of their editions of Maya stuff; I think the answer will be 500 or 750. Suggest we ask the office to get rough estimates on these three plates at above scales for editions of 500 and 750, to see if this Introduction as now planned is within the realm of the possible or not.

L.S.Jr.

2 | 52 6/8 = 26 3/8"
2 | 115 6/8 = 57 1/4"
10/15 10/8 = 1 1/4
14/14 = 1
1/2 = 4/8
10/8