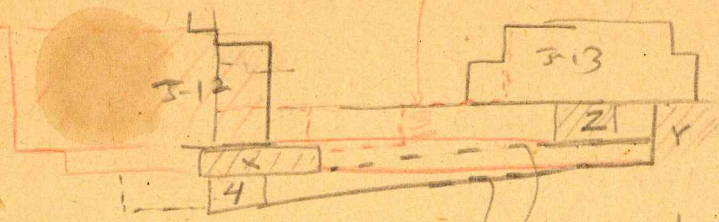


times of miss low



If 5-12 end is an additon, it still is red floor, cont with 1 to (min)

"y is both higher + lower than x. \therefore floor 3 + 4 may be cont with each other + y.

\therefore x must follow y. make x end with 5-12 (red floor) The 4 must precede red floor (= 5-9 sub) (1 period)

In start of y being lower, max
 x ext = x (= 5-12 (1) as above)
 y ext = 5-12 extension (min)
 4 precedes x = 5-12 (1)

If 5-12 end = wall (1) := red floor.

x } both precede. The levels
 4 } make this likely.
 $x + z$ can = $4 + x$ (min).

or $x = x$ } 2 periods
 $z = 5-12 (1)$ } precede

Conclusion: Assembling a double extension of original 5-12 plants, periods prior to red floor period may be reduced to one. This violates prohibition in levels.

Step down again + make 4 cont with (1)
 $4 = 5-12 (1) = x$
 x is inserted before extension = z
 Extension a period is added.

or $4 = 5-12 (1)$
 $x = x$, must = all be inserted
 Extension = z (min)

J-12 - 13 - No. 5 Ent

Units

with step (min levels)

J-13 - plus a necessary floor 6' below J-12 plinth.

Poss b This corresponds with green floor of P on 3 level (a bit lower)
- floor (here)

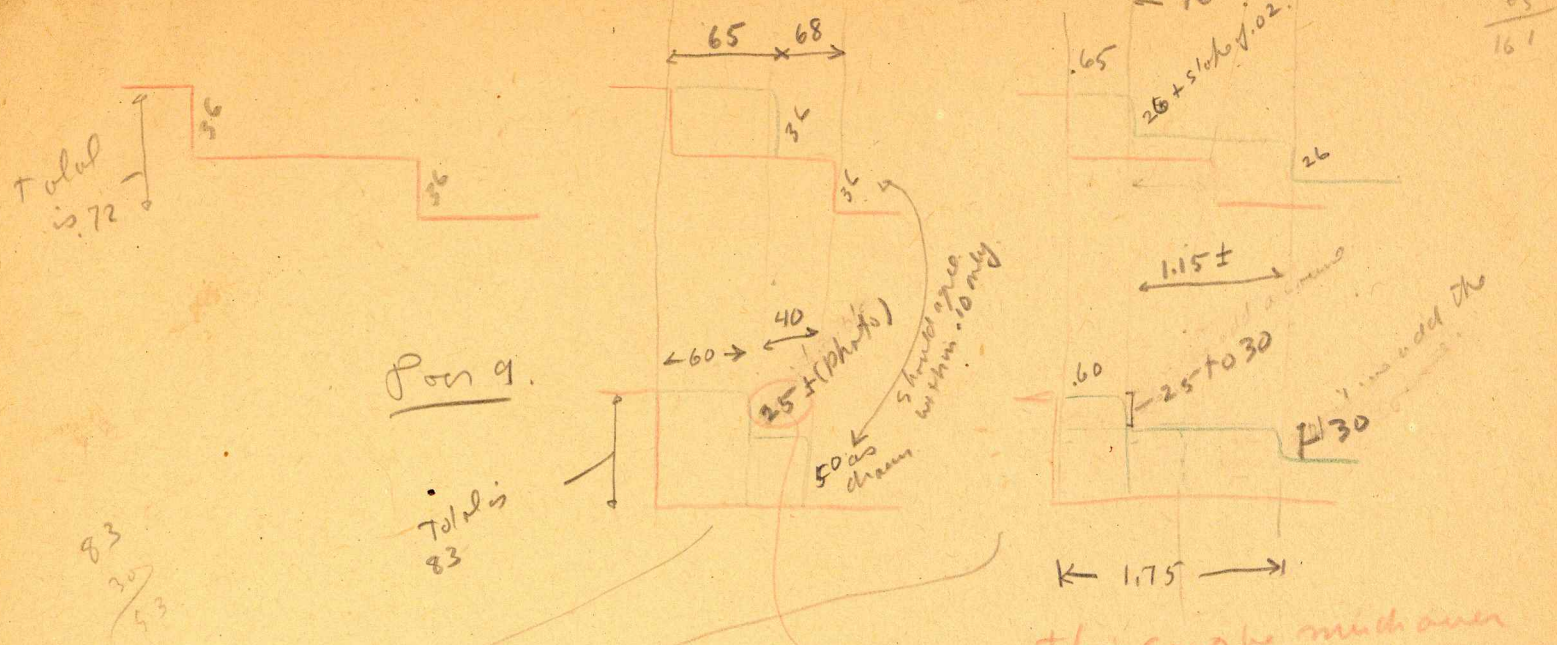
run a - Could be with down 3 blue floor period, lower level here.

J-12 wall 1c + 3c (min levels) - This corresponds with floor "2" in level, though was not considered in digging. They were hard to find.

This is based $\frac{69}{16}$ 85 below J-12 plinth - ten deeper than than red $\frac{85}{85}$ + floor elsewhere.

Poss. a If this is green floor it is a whole step lower here.
- add 1c + 3c to 1a + 3d = 1b + 3e (min).
b If red, it is only .10 lower than rd down 1.
- this

Poon 5 (horizontal is Poon 3)



Working Backward

The green steps correspond within .19 horizontally: .05 of this could be in shrinkage of upper step.

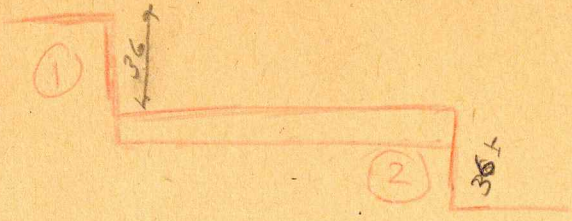
They correspond vertically only to raising the wall as found in upper step, which increases discrepancy for lower. As they look, 2 steps of 30 each seem probable as door 9, against about .25 at Poon 5. This would not be noticeable in the facade.

- OK ???

understand better correspond within .05. "addition" to lower step within .28 (~~too~~ too much?) The heights are uncertain - lower probably higher - but there is no greater length to reach. Upper not much over 25 - see photo 35-74.

- If these do not correspond, extremely strange results ~~would~~ ensue - they are too close to make sense as anything else. The length between the sections is considerable and accounts for some differences.

pm 5



52
-38
-14
22
52

pm 9



Pis S-12 plinth 1 levels

- red floor (Pon 3) - top seen well below wall 1

" (Pon 3) - levels call for it - not reached

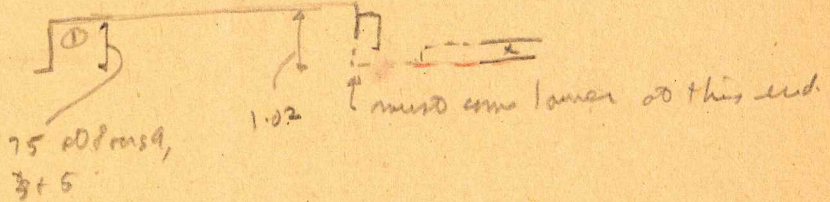
" (Pon 9) - ends - end of wall 1 plinth rests on this level. (consistent, no more)

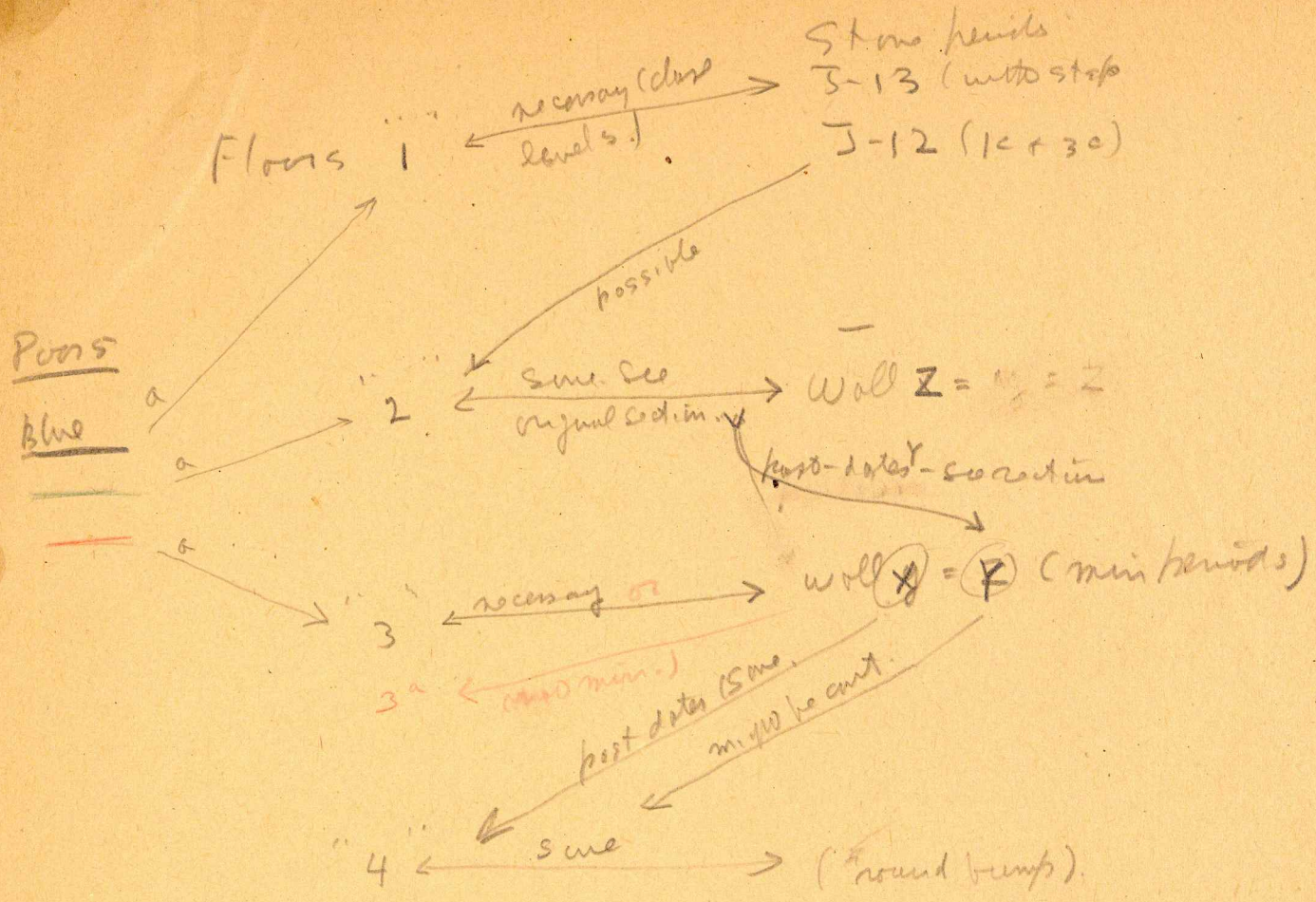
NE end: must be as simple as possible: wall x on red floor.

- wall (X) on red floor, this predates this end of S-12.
 Either predates wall ① at Pons 3 & 4. - puts mosaic with other red floor.

or this end was added to wall ① - same time as ①-a) do.
 which case wall x may be contemporary with ①

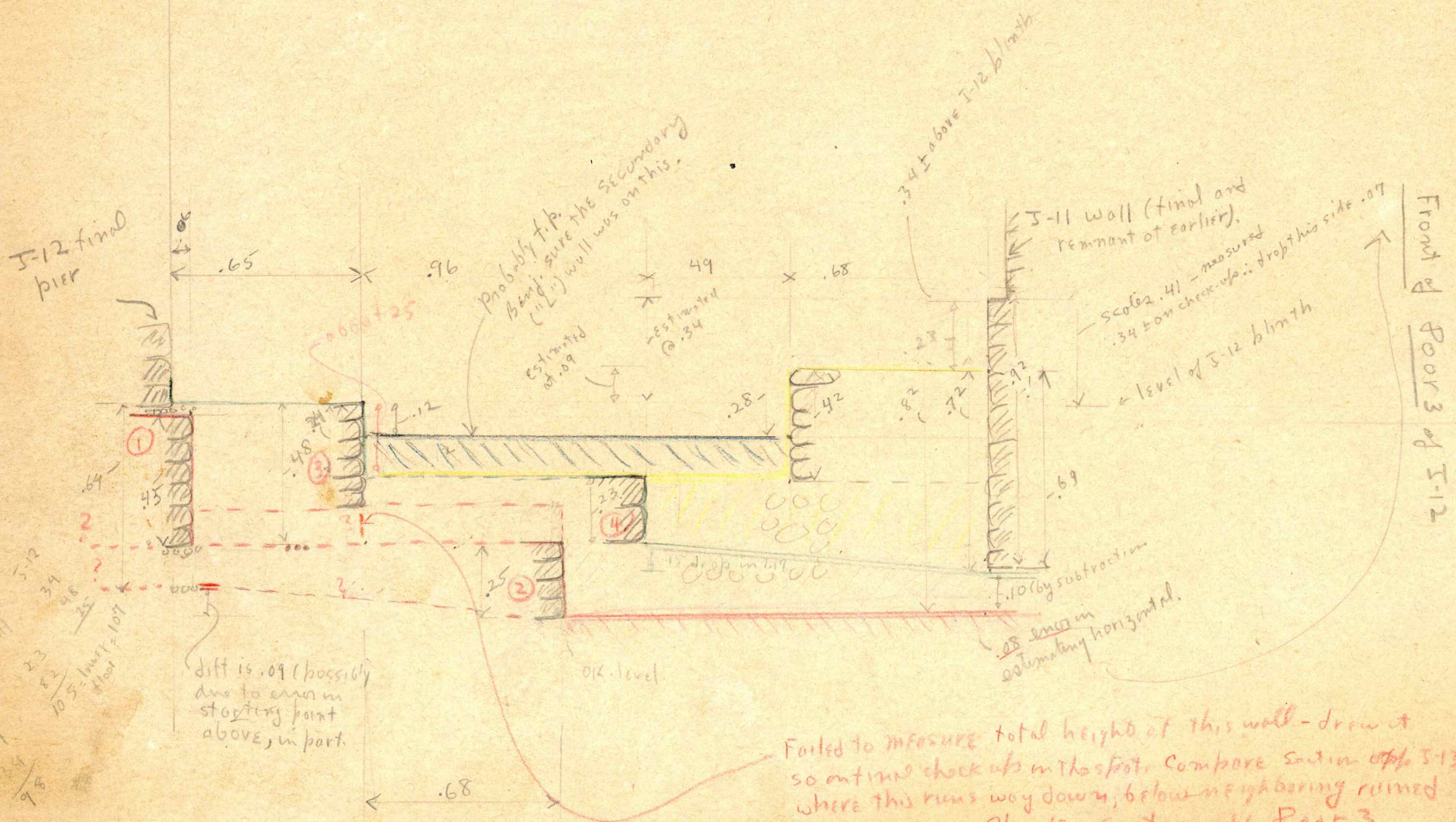
- unlikely:





Possibly a - Building activity is associated with red floor
 - On Min basis - contemp with a shad of plinth; later extended same time as 1-6.
 - Must add

Door 3 of I-12



I-11 + I-12 Plinth
 Sections, 1937.
 Drawn from sketch sheet.

Failed to measure total height at this wall - draw it so on time check ups in the field. Compare section opp. I-13 where this runs way down, below neighboring ruined construction. Cp. also section opp. Door 3

diff is .09 (possibly due to error in starting point above, in part)

Probably f.p. being sure the secondary wall was on this.
 estimated at .09

drop in level
 OK level
 .28 error in subtracting horizontal.

J-11 wall (final and remnant of earlier).
 scored .41 - measured .34 ± on check-ups; drop this side .07

level of I-12 blmth

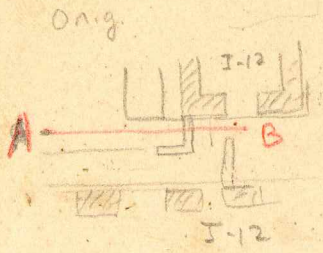
J-12 final pier

Front of Door 3 of I-12

34
64
98

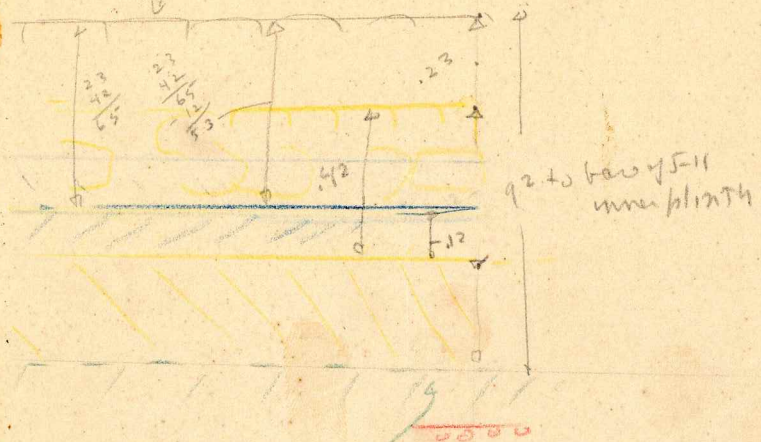
5-11 5-12
23/82/105
64/23/41/98

2072
65



This dip from
Door 3 section.
assuming given
floor level in this
direction.

5" plinth



or happened to
word found about
& could run
right under
ending "L" wall.

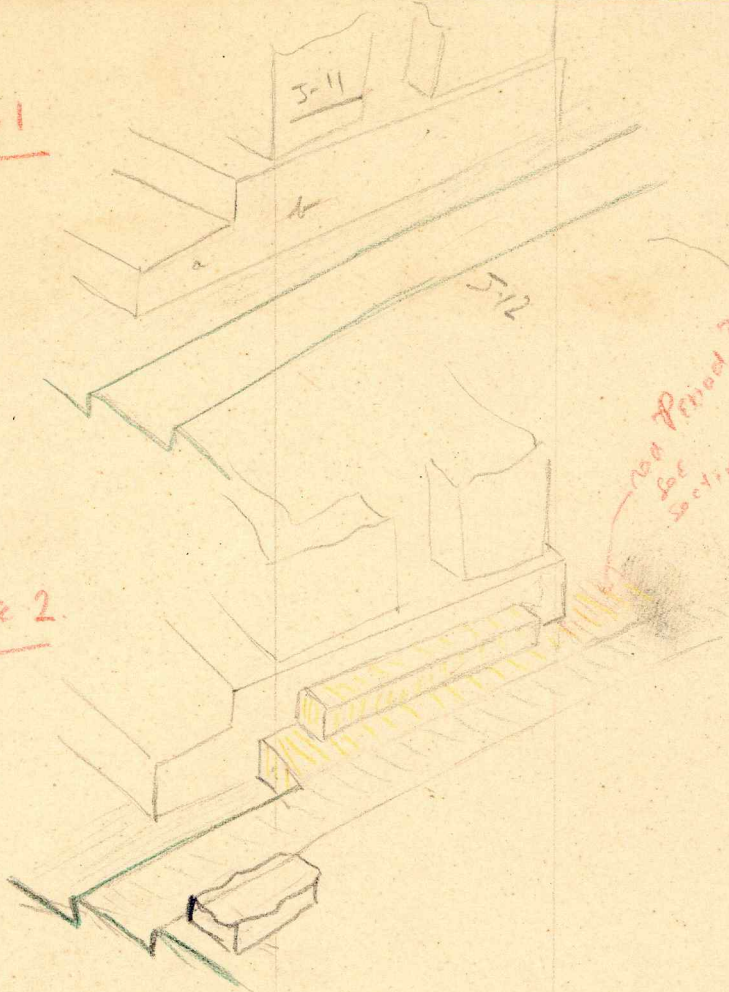
assume level
floor

TAP any levels on J-11 & 12
plinth to help - a system of
them including J-11 plinth at corner +
stand door, J-12 & Door 3 + 5 would do it.

23
42
65

J-11

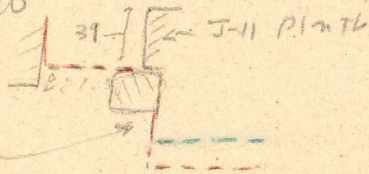
Phase 1

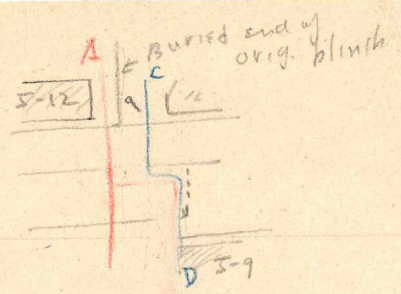
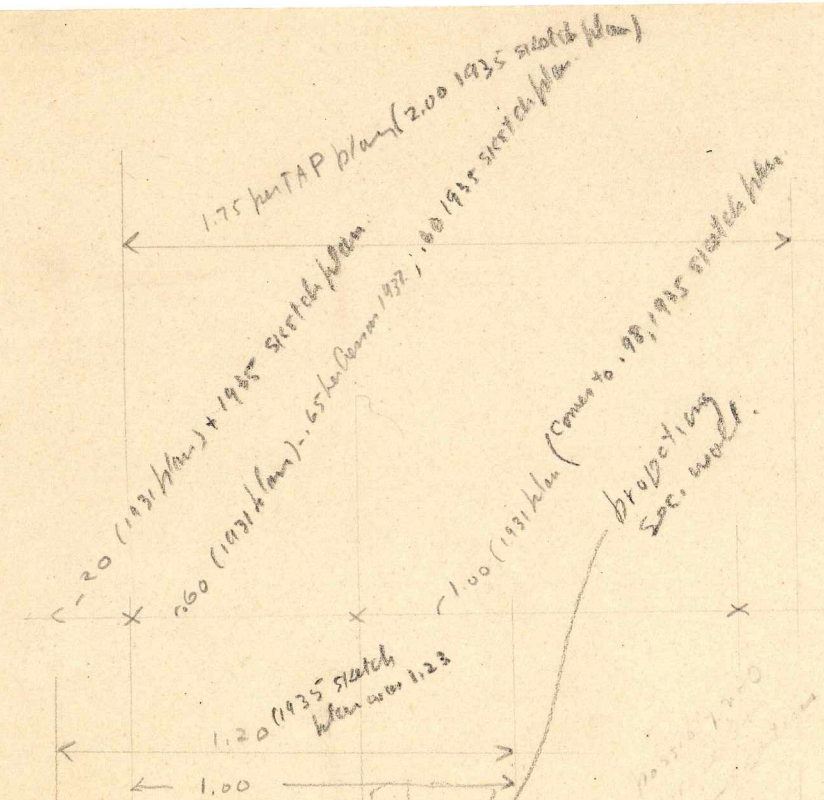


Phase 2

a+b parts are a unit - See Sec A - J-11
 + 1936 Sect through throne room - the
 plinth step runs down on neither.
 (Cp. J-12 to 2nd phase 1, which is
 thus reasonable.

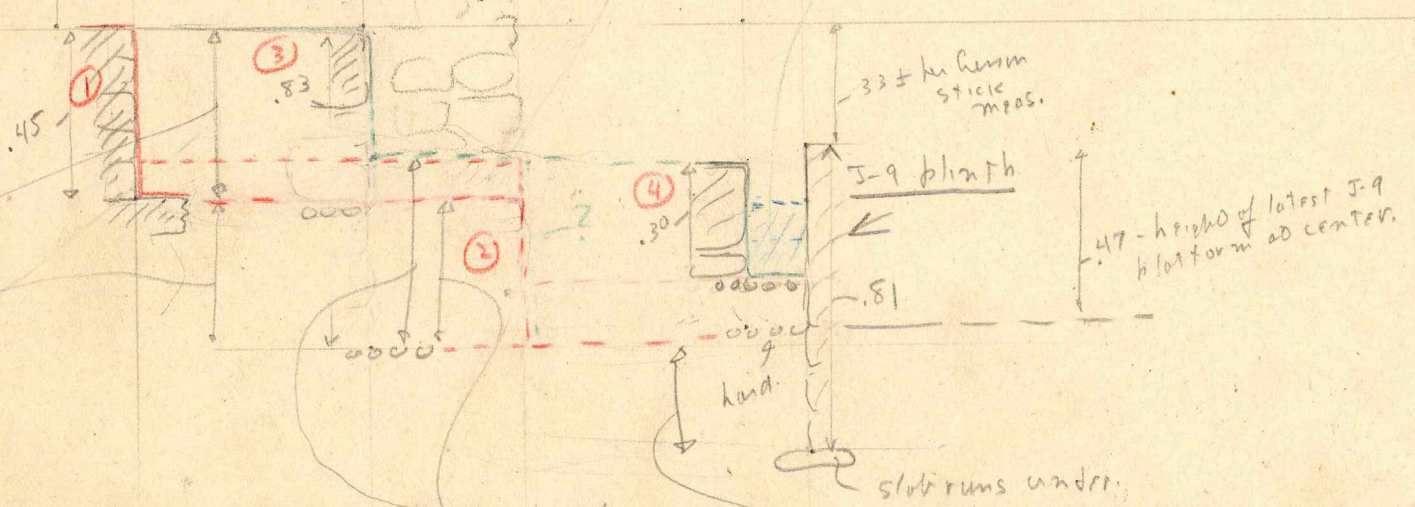
Query: Is this a structural
 prelude to Phase 2? - reason for thinking
 so: the plinth at rear (1936 throne
 room) is only .39 high, against .9200
 + his end. etc
 very likely
 rides over
 a tenace
 at the rear;
 which perhaps
 initiates this
 reasoning





Poor 9 of 5-12
Section A-B

Heights? could find them - I-9 plinth is hemm's approx. 2nd green step a little below that - estimated from 1931 drawing

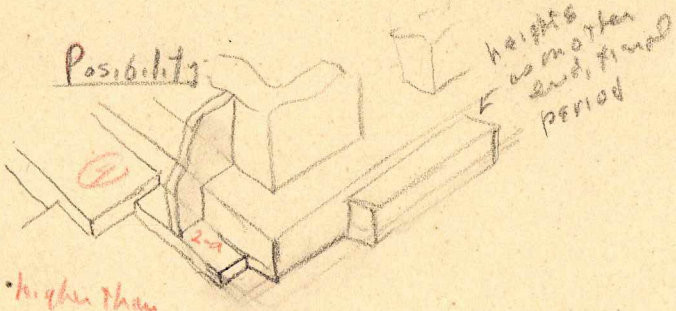


Not measured -
shown as shown
Photo 35-74 centimeters
83
45
48

This height depends on guesses for relative heights of 5-9 + 5-12. 10 error in guess will make ② open up other sections.

This is too much, I am sure.

I-9 + I-12
1935 Section AB
SEE next sheet for Sec C-D
Section AB
1935 Section 1.5. Drawing 9



4. higher than
2-a as in
3 + 4 sections

Door 9 of J-12
Section C-D

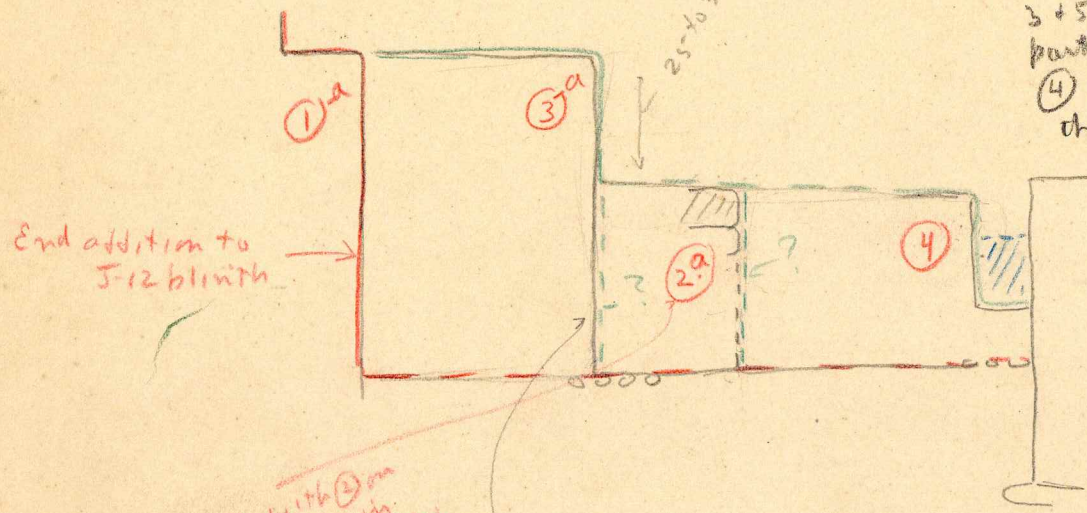
Is ④ not higher than ②-a?

Not as dry - see photo 35-74, in agreement with non-leveled drawing. But top course may be missing. However

Note this wall stops against a large transverse stone - about in line with end of arch of J-12-13. Here is where plaza level rose? Cp. film 37-358. This position is in approx. agreement with end of step ④ which may be later than the blue ridge in level. (?) . It could still be earlier. But in either case did not run around the end.

J-9 + J-12
Section C-D
Based on Sect AB plus
Cresson 1937 data.
Subject to errors in
levels.

photo 35-74 indicates step of 3-a very little over 25; corresponding step at doors 3 + 5 was 36. To partly bury it with ④ would reduce the final step here to less than there.



End addition to J-12 blinith

agrees with ② in other sections in horizontal position; not in level (step) but follows ② instead of preceding

goes all the way down just after passing to the addition - See photo 37-358 + Cresson notes in the photo.

where is (6)?

(7)

58
82
76
218

Chimneys with
.45 on J-11
Section
J-12 Blg wall
wrong?

Chimneys well enough
with J-11 section -
but not in height

J-13 Blg. wall.

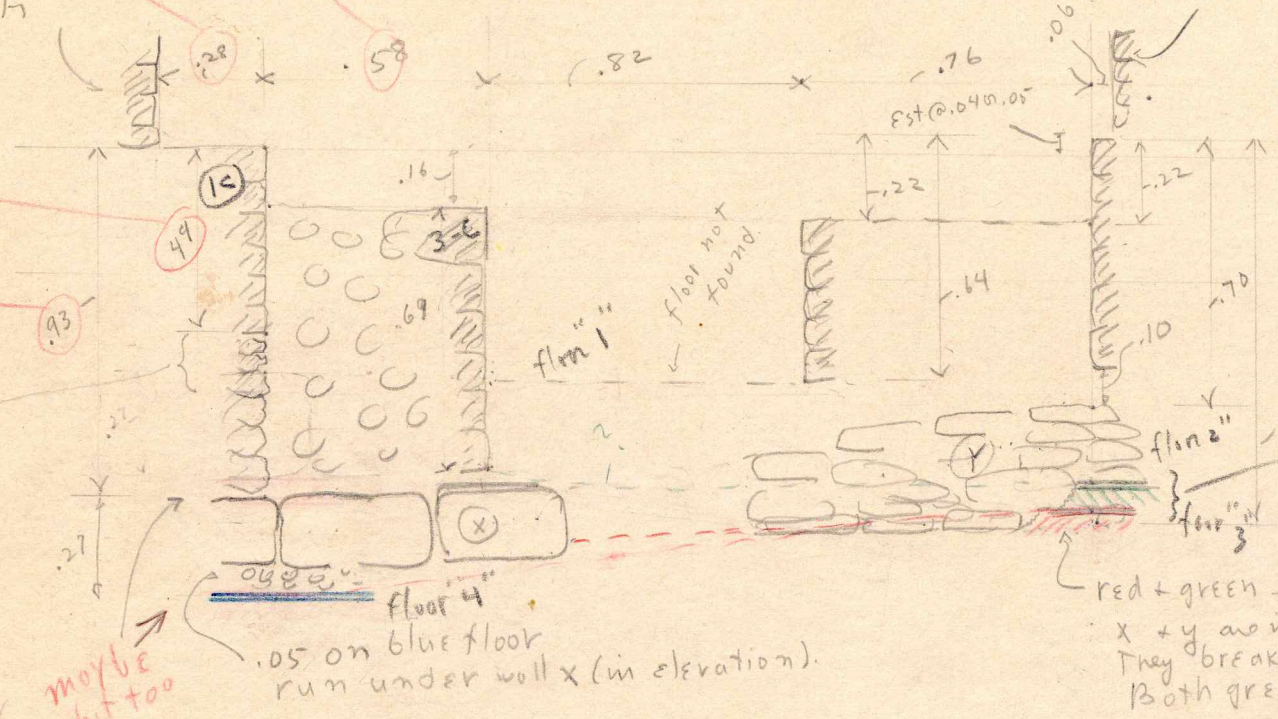
Runs to
lower floor
in sketch

Plinth is
crude
full wall
below .49

99
27
66

93
27
120

maybe
abit too
low



S-11 J-12 + J-13
Plinth Sections
From sketch sheet.