

Cuaderno Escolar

de

Pennsylvania

PERTENECIENTE

a

Packing Book - 1932

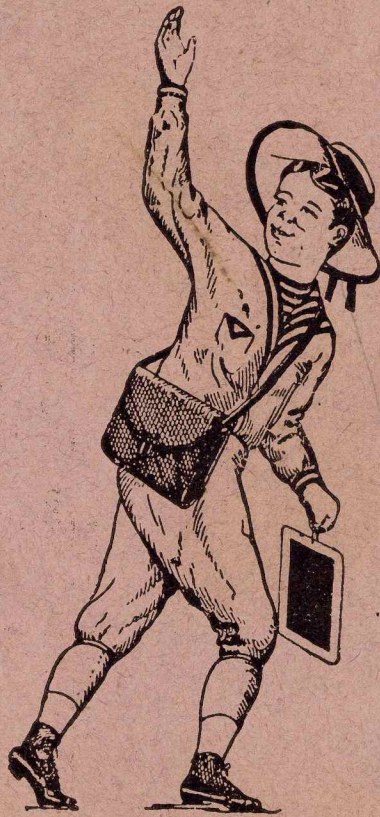
JUSTO DIAZ DEL CASTILLO.

LA CASA QUE SIEMPRE VENDE BARATO.

Gran surtido constante de
Lencería en general,
Calzado, Medicinas paten-
tadas, Ferretería
y Abarrotes.

Fábrica de hielo, Paletas y
Aguas Gaseosas
con agua pura de lluvia.
Concesionario de la deli-
ciosa bebida
SINALCO.

Tenosique, Tab., Méx.





Box - P1 (weight ?) Catalogue No
 Screen piece # A W-12-11
 " " " N

Box - P2 (weight ?) W-12-11
 Screen piece # M

Box - P3 (weight 50KT) W-12-11
 Screen piece # J
 " pieces sub-numbered 1 to 24

Box - P4 (weight 54 1/2K) W-12-11
 Screen piece C
 " " D
 Legs " A1
 " " B
 " sub-numbered 1 to 24
 3 pieces not lettered (1 from table top?)

Box - P5 (weight 60K)
 Screen piece B
 " " H

(over)

Box - P-6 (weight 51K)

Catalogue No

W-12-11

Screen piece K1

" " K2

" " S

" " T

" " R

" " W

" " D

" " Q

" " F

" " E

✓ S-2-17 24 sherds (tripod bowl)

✓ S-2-16 13 sherds (2 vessels)

✓ S-2-23 1 sherd

Box P-7 (weight 53K)

W-12-11

Table Top Piece H

" C

" J

" I

" G

" A

Box P-8 (weight 52K)

W-12-11

Leg pieces A

" " B

Table Top " E

" " " K

" " " M

" " " N

Box P-9 (weight 50K)

W-12-11

Leg pieces C

" " D

" " E

" " F

(over)

✓
Box P-10 (weight 54K)

W-12-11 Table Top ^{pieces} B
" " D

4 Fragment, not fitted, no glyphs - two
show top surface - numbers effaced
probably including A, P, and O

Box P-11 (weight 47K)

W-12-11 Table Top, pieces O
J

- ✓ W-9-8 Sample of cement to be analyzed
- ✓ W-9-9 " " " " " "
- ✓ S-1-38
- ✓ S-1-48
- ✓ S-1-42
- ✓ E-7-4

TABLA DE SUMAR

1 y 1 son 2	4 y 1 son 5	7 y 1 son 8
1 . 2 . 3	4 . 2 . 6	7 . 2 . 9
1 . 3 . 4	4 . 3 . 7	7 . 3 . 10
1 . 4 . 5	4 . 4 . 8	7 . 4 . 11
1 . 5 . 6	4 . 5 . 9	7 . 5 . 12
1 . 6 . 7	4 . 6 . 10	7 . 6 . 13
1 . 7 . 8	4 . 7 . 11	7 . 7 . 14
1 . 8 . 9	4 . 8 . 12	7 . 8 . 15
1 . 9 . 10	4 . 9 . 13	7 . 9 . 16
1 . 10 . 11	4 . 10 . 14	7 . 10 . 17

2 y 1 son 3	5 y 1 son 6	8 y 1 son 9
2 . 2 . 4	5 . 2 . 7	8 . 2 . 10
2 . 3 . 5	5 . 3 . 8	8 . 3 . 11
2 . 4 . 6	5 . 4 . 9	8 . 4 . 12
2 . 5 . 7	5 . 5 . 10	8 . 5 . 13
2 . 6 . 8	5 . 6 . 11	8 . 6 . 14
2 . 7 . 9	5 . 7 . 12	8 . 7 . 15
2 . 8 . 10	5 . 8 . 13	8 . 8 . 16
2 . 9 . 11	5 . 9 . 14	8 . 9 . 17
2 . 10 . 12	5 . 10 . 15	8 . 10 . 18

3 y 1 son 4	6 y 1 son 7	9 y 1 son 10
3 . 2 . 5	6 . 2 . 8	9 . 2 . 11
3 . 3 . 6	6 . 3 . 9	9 . 3 . 12
3 . 4 . 7	6 . 4 . 10	9 . 4 . 13
3 . 5 . 8	6 . 5 . 11	9 . 5 . 14
3 . 6 . 9	6 . 6 . 12	9 . 6 . 15
3 . 7 . 10	6 . 7 . 13	9 . 7 . 16
3 . 8 . 11	6 . 8 . 14	9 . 8 . 17
3 . 9 . 12	6 . 9 . 15	9 . 9 . 18
3 . 10 . 13	6 . 10 . 16	9 . 10 . 19

TABLA DE MULTIPLICAR

1 por 1 1	4 por 1 4	7 por 1 7
1 . 2 2	4 . 2 8	7 . 2 14
1 . 3 3	4 . 3 12	7 . 3 21
1 . 4 4	4 . 4 16	7 . 4 28
1 . 5 5	4 . 5 20	7 . 5 35
1 . 6 6	4 . 6 24	7 . 6 42
1 . 7 7	4 . 7 28	7 . 7 49
1 . 8 8	4 . 8 32	7 . 8 56
1 . 9 9	4 . 9 36	7 . 9 63
1 . 10 10	4 . 10 40	7 . 10 70

2 por 1 2	5 por 1 5	8 por 1 8
2 . 2 4	5 . 2 10	8 . 2 16
2 . 3 6	5 . 3 15	8 . 3 24
2 . 4 8	5 . 4 20	8 . 4 32
2 . 5 10	5 . 5 25	8 . 5 40
2 . 6 12	5 . 6 30	8 . 6 48
2 . 7 14	5 . 7 35	8 . 7 56
2 . 8 16	5 . 8 40	8 . 8 64
2 . 9 18	5 . 9 45	8 . 9 72
2 . 10 20	5 . 10 50	8 . 10 80

3 por 1 3	6 por 1 6	9 por 1 9
3 . 2 6	6 . 2 12	9 . 2 18
3 . 3 9	6 . 3 18	9 . 3 27
3 . 4 12	6 . 4 24	9 . 4 36
3 . 5 15	6 . 5 30	9 . 5 45
3 . 6 18	6 . 6 36	9 . 6 54
3 . 7 21	6 . 7 42	9 . 7 63
3 . 8 24	6 . 8 48	9 . 8 72
3 . 9 27	6 . 9 54	9 . 9 81
3 . 10 30	6 . 10 60	9 . 10 90

TABLA DE RESTAR

1 para 1 faltan 0	4 para 4 faltan 0	7 para 7 faltan 0
1 . 2 . 1	4 . 5 . 1	7 . 8 . 1
1 . 3 . 2	4 . 6 . 2	7 . 9 . 2
1 . 4 . 3	4 . 7 . 3	7 . 10 . 3
1 . 5 . 4	4 . 8 . 4	7 . 11 . 4
1 . 6 . 5	4 . 9 . 5	7 . 12 . 5
1 . 7 . 6	4 . 10 . 6	7 . 13 . 6
1 . 8 . 7	4 . 11 . 7	7 . 14 . 7
1 . 9 . 8	4 . 12 . 8	7 . 15 . 8

2 para 2 faltan 0	5 para 5 faltan 0	8 para 8 faltan 0
2 . 3 . 1	5 . 6 . 1	8 . 9 . 1
2 . 4 . 2	5 . 7 . 2	8 . 10 . 2
2 . 5 . 3	5 . 8 . 3	8 . 11 . 3
2 . 6 . 4	5 . 9 . 4	8 . 12 . 4
2 . 7 . 5	5 . 10 . 5	8 . 13 . 5
2 . 8 . 6	5 . 11 . 6	8 . 14 . 6
2 . 9 . 7	5 . 12 . 7	8 . 15 . 7
2 . 10 . 8	5 . 13 . 8	8 . 16 . 8

3 para 3 faltan 0	6 para 6 faltan 0	9 para 9 faltan 0
3 . 4 . 1	6 . 7 . 1	9 . 10 . 1
3 . 5 . 2	6 . 8 . 2	9 . 11 . 2
3 . 6 . 3	6 . 9 . 3	9 . 12 . 3
3 . 7 . 4	6 . 10 . 4	9 . 13 . 4
3 . 8 . 5	6 . 11 . 5	9 . 14 . 5
3 . 9 . 6	6 . 12 . 6	9 . 15 . 6
3 . 10 . 7	6 . 13 . 7	9 . 16 . 7
3 . 11 . 8	6 . 14 . 8	9 . 17 . 8

TABLA DE DIVIDIR

1 entre 1 a 1	4 entre 4 a 1	7 entre 7 a 1
1 . 1 1	4 . 4 1	7 . 7 1
2 . 1 2	8 . 4 2	14 . 7 2
3 . 1 3	12 . 4 3	21 . 7 3
4 . 1 4	16 . 4 4	28 . 7 4
5 . 1 5	20 . 4 5	35 . 7 5
6 . 1 6	24 . 4 6	42 . 7 6
7 . 1 7	28 . 4 7	49 . 7 7
8 . 1 8	32 . 4 8	56 . 7 8
9 . 1 9	36 . 4 9	63 . 7 9
10 . 1 10	40 . 4 10	70 . 7 10

2 entre 2 a 1	5 entre 5 a 1	8 entre 8 a 1
2 . 2 1	5 . 5 1	8 . 8 1
4 . 2 2	10 . 5 2	16 . 8 2
6 . 2 3	15 . 5 3	24 . 8 3
8 . 2 4	20 . 5 4	32 . 8 4
10 . 2 5	25 . 5 5	40 . 8 5
12 . 2 6	30 . 5 6	48 . 8 6
14 . 2 7	35 . 5 7	56 . 8 7
16 . 2 8	40 . 5 8	64 . 8 8
18 . 2 9	45 . 5 9	72 . 8 9
20 . 2 10	50 . 5 10	80 . 8 10

3 entre 3 a 1	6 entre 6 a 1	9 entre 9 a 1
3 . 3 1	6 . 6 1	9 . 9 1
6 . 3 2	12 . 6 2	18 . 9 2
9 . 3 3	18 . 6 3	27 . 9 3
12 . 3 4	24 . 6 4	36 . 9 4
15 . 3 5	30 . 6 5	45 . 9 5
18 . 3 6	36 . 6 6	54 . 9 6
21 . 3 7	42 . 6 7	63 . 9 7
24 . 3 8	48 . 6 8	72 . 9 8
27 . 3 9	54 . 6 9	81 . 9 9
30 . 3 10	60 . 6 10	90 . 9 10

Cuaderno Escolar

de

PERTENECIENTE

a

Pennsylvania Books
JUSTO DIAZ DEL CASTILLO.

LA CASA QUE SIEMPRE VENDE BARATO.

Gran surtido constante de
Lencería en general,
Calzado, Medicinas paten-
tadas, Ferretería
y Abarrotes.

Fábrica de hielo, Paletas y
Aguas Gaseosas
con agua pura de lluvia.
Concesionario de la deli-
ciosa bebida

SINALCO.

Tenosique, Tab., Méx.



Librería y Encuadernación de Jorge Burrel.

Objects for Pennsylvania

Box P-12 (weight 40K±)

- W-17-24 - Pyrite mirror ✓
- W-17-86 Juley hematite band ✓
- W-17-42 ♂-4 Long shell with glyphs ✓
- ♂-3 " " " " " ✓
- W-17-71 Jadeite jaguar head ✓
- W-17-8 Jadeite & Coral beads (2 string jadeite 1" size) ✓
- W-17-64 Jadeite ear plug (left ear) ✓
- W-17-68 Long jadeite bead ✓
- W-17-85 Coral animal bead (moon bird) ✓
- W-17-67 6 shell ornament ✓
- W-17-402 2 piece Jadeite ^{+ Blank = 3 (shell beads)} ^{no pendants in C. la Coque (Oregon)} ✓
- W-17-32 1 jadeite palette ✓
- W-17-65 1 jadeite bead ✓
- W-17-4 Jadeite disk (perforated) ✓
- W-17-72 Jadeite long bead ✓
- W-17-43 Jadeite earplug ✓
- W-17-56 Jadeite cylindrical bead ✓
- W-17-70 Jadeite string figure ✓
- W-17-58 6 jadeite beads ✓
- W-17-62 Shell ornament (beater) ✓
- W-17-402 One pair of jadeite prothematic forms ✓
- W-17-828 Jadeite insect ✓

left page

✓ Box P-12 Continued

- W-17-66 - Large curved jadeite breast ornament ✓
- W-17-82 - 29 teeth ✓
- W-17-55 Jadeite plecter ✓
- e " ✓
- t " ✓
- o " ✓
- s " ✓
- M " ✓
- Q g " ✓
- 2 " ✓
- y " ✓
- a " ✓
- e " ✓
- W-17-49 - Steungray spine with glyphs ✓
- W-17-42 A to P, excluding S-3 and 4 ✓
- W-17-40 A, B, 7 shells ✓
- W-17-75 Large shell ✓
- W-17-47 clay shell ✓
- W-17-40d P halauge ✓
- W-17-34 clay ornament ✓
- W-17-20 shell ornament, broken ✓
- W-17-60 " " unbroken ✓
- W-17-58 Large clay bead ✓

Continued Page 13

Box P-13 opened

Box P-13

- S-1-11 35 sherds ✓
- S-1-12 1 miniature olla ✓
- S-1-15 1 sherd ✓
- S-1-16 52 sherds ✓
- M-18-3 1 sherd ✓
- M-18-5 1 figurine ✓
- W-28-1 2 sherds ✓
- W-28-5 2 sherds ✓
- M-18-9 1 sherd ✓
- W-25-4 1 sherd ✓
- W-25-2 37 sherds ✓
- W-17-91 1 fragment of (totilla 2) gourd ✓
- W-25-3 47 sherds ✓
- W-17-1 25 sherds ✓
- W-25-1 26 sherds ✓
- W-22-2 29 sherds ✓
- W-12-10 1 fragment of stone ✓
- W-6-17 3 sherds ✓
- W-6-18 3 sherds ✓
- W-6-19 3 sherds ✓
- W-12-12 9 sherds ✓
- W-27-2 9 sherds ✓
- W-27-1 1 sherd (next page) ✓

Bk P-13 Continued

W-22-7	1 sherd	✓
W-22-5	1 sherd	✓
W-22-4	3 sherds	✓
W-26-1	5 sherds	✓
W-24-1	6 sherds	✓
W-17-10	14 sherds	✓
W-6-20	4 sherds (1 large piece consists of small sherds mixed)	✓
E-3-16	5 sherds	✓
E-3-17	6 sherds	✓
E-1-129	1 sherd	✓
E-6-1	5 sherds	✓
X E-2-1	1 sherd (1931) In catalogue of 1931	✓
W-6-14	1 sherd	✓
S-2-1 (3)	2 handle to incense	✓
W-8-4	Bottom of tripod	✓
W-11-2	1 sherd	✓
W-8-2	1 sherd	✓
W-13-2 (1)	1 sherd	✓
W-11-5	1 sherd	✓
W-10-5	1 sherd	✓
S-2-2	9 Fragment of cylindrical stone	✓
W-6-21c	4 small sherd	✓
W-6-21c	20 sherds	✓

Bk P-13 continued on Page 10

Bk P-15 - opened

E-1-150	Dirt	✓
E-1-149	13 sherds	✓
S-7-4	38 sherds	✓
S-7-5	1 sherd	✓
	1 carved bone	✓
S-7-7	28 sherds	✓
S-7-3	94 sherds	✓
S-7-6	25 sherds	✓
S-7-2	36 sherds	✓
S-7-5	1 sherd and carved bone	✓
E-1-156	22 sherds	✓
E-1-157	1 sherd	✓
E-1-155	8 sherds (Prach, Pat)	✓
E-1-155	13 sherds " "	✓
E-3-12	9 sherds	✓
E-1-153	1 sherd	✓
E-1-143	1 sherd	✓
E-1-142	3 sherds	✓
E-3-15	15 sherds	✓
E-3-14	8 sherds	✓
E-7-1	8 sherds	✓
W-17-10	26 sherds	✓
no number	11 sherds	✓

(over)

Box P-15 Continued

✓

- E-5-1 7 sherds ✓
- W-17-7 6-1 clay balls ✓
- E-5-2 5 sherds ✓
- E-3-9 5 sherds ✓
- E-3-10 1 sherd ✓
- E-3-11 1 sherd ✓
- E-6-2 7 sherds ✓
- S-2-20 Figurine torso ✓
- E-7-11 Head and torso of figurine ✓
- S-7-4 Figurine ✓
- S-7-3 Figurine head ✓
- S-7-7 Figurine torso fragment ✓
- S-1-37 Pottery disk ✓
- M-18-8 4 fragments of stela #5 ✓

Box P-16 - sherd

✓

Box 16

- S-1-19 47 sherds ✓
- S-1-19a 20 sherds } ✓
- 1 obsidian } ✓
- S-1-19b 41 sherds ✓
- S-1-28 14 sherds ✓
- S-1-39 3 sherds ✓
- S-1-40 10 sherds ✓
- S-1-46 Pottery disk? Looks like a stela ✓
- S-1-47a 5 sherds ✓
- S-1-47b 7 sherds ✓
- S-7-1 30 sherds ✓
- S-2-23 10 sherds ✓
- S-2-14 12 sherds ✓
- S-2-12 11 sherds ✓
- S-2-23 46 sherds ✓
- S-2-6 10 sherds ✓
- S-2-7 1 sherd ✓
- S-2-18 handle of incense ✓
- S-7-8 26 sherd ✓
- S-1-11 } Large number of ✓
- S-2-23 } sherds ✓
- S-1-2 } ✓

next page

Box P-16 Continued

✓

- S-7-11 5 sherds ✓
- S-8-1 4 sherds ✓
- S-8-2 5 sherds ✓
- S-8-3 13 sherds ✓
- S-8-4 65 sherds ✓
- S-9-1 3 sherds ✓
- S-10-1 15 sherds ✓
- S-10-2 19 sherds ✓
- S-10-3 10 sherds ✓
- S-12-1 3 sherds ✓
- S.E.-6-2 19 sherds ✓
- S.E.-6-1 62 sherds ✓
- S.E.-7-4 1 sherd ✓
- S.E.-7-2 11 sherds ✓
- M-18-5 2 sherds ✓
- M-18-6 1 sherd ✓
- S.E.-8-3 7 sherds ✓
- S.E.-8-2 4 sherds ✓
- S-1-11 1 Figurine Fragment ✓
- No number 31 obsidians ✓
- S-2-15 Figurine head ✓
- S-2-19 Figurine head ✓
- S-2-13 Figurine head ✓

(next page)

Box P-16 Continued

- S-2-12 Figurine torso ✓
- S-11-1 Figurine head ✓
- S-11-2 Figurine owl ✓
- S-1-49 Figurine head ✓
- E-3-1 Figurine head ✓
- E-1-130 Figurine head ✓
- E-1-155 Figurine hand ✓
- E-1-157 Pottery object ✓
- S-7-8 Figurine whistle ✓
- E-7-2 base Pottery Rosette ✓
- No number 9 objects including - Figurines, ✓
Figurine fragments, Pottery fragments
and 1 figurine whistle

Box P-13 Continued

- E-1-159 1 sherd ✓
- E-1-153 1 jadeite ✓
- S-2-13 granite pendant ✓
- E-7-9 Pottery Rectangle ✓
- S-1-31 arrowhead ✓
- S-1-30 Flint knife ✓
- W-6-21d 1 jadeite ✓
- W-6-21d 1 eccentric flint ✓
- W-6-21d 1 obsidian piece and 1 fragment ✓
- W-6-21g 3 shell fragments ✓
- W-6-21k Sturgeon (bone) spine ✓
- W-6-21f Stone fragment ✓
- W-6-21g Shell head ✓
- W-6-21N=H 2 fragments of crystalline substance ✓
- E-7-3 2 eccentric obsidians ✓
- E-1-153 3 obsidians ✓
- E-1-154 2 obsidians ✓
- E-1-151 1 obsidian ✓
- E-1-? 2 obsidians ✓
- S-1-16 2 obsidians ✓
- S-1-33 2 obsidians ✓
- S-1-19 1 obsidian ✓
- S-2-27 1 obsidian ✓

Box P-13 Continued

- S-2-23 1 Obsidian ✓
- W-17-88 1 Figurine ✓
- W-6-13 1 Figurine fragment ✓
- W-17-10 1 Figurine fragment and
1 animal head-figurine ✓
- M-18-2 1 Figurine head ✓
- W-25-2 Figurine fragment ✓
- W-25-1 2 Figurine heads ✓
- S-1-11 Figurine head ✓
- S-1-14 Pottery disk ✓
- S-1-13 Spindle wheel ✓
- W-20-1 1 Figurine fragment and
1 Pottery fragment ✓
- S-1-25 Figurine head ✓
- S-1-26 Figurine head ✓
- S-1-44 Figurine head ✓
- S-1-45 Pottery disk ✓
- S-2-14 Figurine head ✓
- E-7-1 Figurine fragment ✓
- S-1-27 3 Figurine heads ✓
- S-2-23 1 Figurine head and
1 Pottery Ear-plug and
4 pieces of Figurine mold ✓

Box P-12

W-17-48 - Part of pottery lid with handle or effigy ✓

W-17-45 - clay shell ✓

W-12-11 Screen piece P ✓

Table top piece S ✓

W-6-9 Large stone head (3 pieces) ✓

Box P-14

opened July -

- | | | |
|---------|------------------|---|
| W-17-54 | Skeleton B | ✓ |
| W-17-41 | Bones | ✓ |
| W-17-59 | Bones | ✓ |
| W-25-3 | Bones (skull) | |
| W-22-4 | Bones (skull) | |
| W-12-25 | Bones (not W-12) | |
| E-7-8 | Tooth | ✓ |
| S-1-29 | Bones | ✓ |
| S-2-13 | Bones | ✓ |
| S-7-1 | Bones | |
| S-7-2 | | |
| S-7-3 | | |
| S-7-4 | | |
| S-7-5 | | |
| S-7-6 | | |
| S-7-7 | | |
| S-7-8 | | |
| S-7-9 | | |
| S-7-10 | | |
| S-1-41 | Bones | ✓ |
| S-2-6 | Bones | ✓ |
| S-8-2 | Bones | ✓ |
| S-8-3 | Bones | |
| S-8-4 | Bones | ✓ |

(mm)

Shenando

Guatemala

E	{ 99 5 vessels
W	199
S	427
SE	8
N	15
<hr/>	
	747
	5 vessels

Pennsylvania

E	{ 98 3 vessels
W	{ 232 3 vessels
S	{ 464 10 vessels
SE	101
N	4
<hr/>	
	800
	16 vessels

10	10	10	10
10	10	10	10
10	10	10	10
10	10	10	10

Boss

~~W-6-11 fine~~

~~W-6-11 f~~

~~W-6-11~~

~~W-8-5~~

~~W-8-8~~

~~W-2-8-2~~

~~W-2-8-2 f~~

~~E-1-3-7~~

~~E-2-7~~

~~E-7-8~~

~~E-4-6 f~~

59 ✓

58 ✓

~~58~~

1 ~~58~~

158-11-11

~~S-1-10 ✓~~

~~S-1-29~~

~~S-1-41~~

~~S-2-1 f~~

~~S-2-13~~

S-2-21

S-2-20

~~S-7-9~~

310	
780	
1090	780
	691
70	70

S-p/28
S√2-1

changes

✓ W-17-10 84 to G instead of 76

✓ W-6-21 One level - list to P

✓ W-28-1 2 sheets to P
17 " " G

✓ W-28-5 2 to P

✓ 0 to G

✓ E-1-145 + 147 to G

W-17-91 to P

TABLA DE SUMAR

1 y 1 son 2	4 y 1 son 5	7 y 1 son 8
1 . 2 . 3	4 . 2 . 6	7 . 2 . 9
1 . 3 . 4	4 . 3 . 7	7 . 3 . 10
1 . 4 . 5	4 . 4 . 8	7 . 4 . 11
1 . 5 . 6	4 . 5 . 9	7 . 5 . 12
1 . 6 . 7	4 . 6 . 10	7 . 6 . 13
1 . 7 . 8	4 . 7 . 11	7 . 7 . 14
1 . 8 . 9	4 . 8 . 12	7 . 8 . 15
1 . 9 . 10	4 . 9 . 13	7 . 9 . 16
1 . 10 . 11	4 . 10 . 14	7 . 10 . 17

2 y 1 son 3	5 y 1 son 6	8 y 1 son 9
2 . 2 . 4	5 . 2 . 7	8 . 2 . 10
2 . 3 . 5	5 . 3 . 8	8 . 3 . 11
2 . 4 . 6	5 . 4 . 9	8 . 4 . 12
2 . 5 . 7	5 . 5 . 10	8 . 5 . 13
2 . 6 . 8	5 . 6 . 11	8 . 6 . 14
2 . 7 . 9	5 . 7 . 12	8 . 7 . 15
2 . 8 . 10	5 . 8 . 13	8 . 8 . 16
2 . 9 . 11	5 . 9 . 14	8 . 9 . 17
2 . 10 . 12	5 . 10 . 15	8 . 10 . 18

3 y 1 son 4	6 y 1 son 7	9 y 1 son 10
3 . 2 . 5	6 . 2 . 8	9 . 2 . 11
3 . 3 . 6	6 . 3 . 9	9 . 3 . 12
3 . 4 . 7	6 . 4 . 10	9 . 4 . 13
3 . 5 . 8	6 . 5 . 11	9 . 5 . 14
3 . 6 . 9	6 . 6 . 12	9 . 6 . 15
3 . 7 . 10	6 . 7 . 13	9 . 7 . 16
3 . 8 . 11	6 . 8 . 14	9 . 8 . 17
3 . 9 . 12	6 . 9 . 15	9 . 9 . 18
3 . 10 . 13	6 . 10 . 16	9 . 10 . 19

TABLA DE MULTIPLICAR

1 por 1 1	4 por 1 4	7 por 1 7
1 . 1 . 1	4 . 1 . 4	7 . 1 . 7
1 . 2 . 2	4 . 2 . 8	7 . 2 . 14
1 . 3 . 3	4 . 3 . 12	7 . 3 . 21
1 . 4 . 4	4 . 4 . 16	7 . 4 . 28
1 . 5 . 5	4 . 5 . 20	7 . 5 . 35
1 . 6 . 6	4 . 6 . 24	7 . 6 . 42
1 . 7 . 7	4 . 7 . 28	7 . 7 . 49
1 . 8 . 8	4 . 8 . 32	7 . 8 . 56
1 . 9 . 9	4 . 9 . 36	7 . 9 . 63
1 . 10 . 10	4 . 10 . 40	7 . 10 . 70

2 por 1 2	5 por 1 5	8 por 1 8
2 . 2 . 4	5 . 2 . 10	8 . 2 . 16
2 . 3 . 6	5 . 3 . 15	8 . 3 . 24
2 . 4 . 8	5 . 4 . 20	8 . 4 . 32
2 . 5 . 10	5 . 5 . 25	8 . 5 . 40
2 . 6 . 12	5 . 6 . 30	8 . 6 . 48
2 . 7 . 14	5 . 7 . 35	8 . 7 . 56
2 . 8 . 16	5 . 8 . 40	8 . 8 . 64
2 . 9 . 18	5 . 9 . 45	8 . 9 . 72
2 . 10 . 20	5 . 10 . 50	8 . 10 . 80

3 por 1 3	6 por 1 6	9 por 1 9
3 . 2 . 6	6 . 2 . 12	9 . 2 . 18
3 . 3 . 9	6 . 3 . 18	9 . 3 . 27
3 . 4 . 12	6 . 4 . 24	9 . 4 . 36
3 . 5 . 15	6 . 5 . 30	9 . 5 . 45
3 . 6 . 18	6 . 6 . 36	9 . 6 . 54
3 . 7 . 21	6 . 7 . 42	9 . 7 . 63
3 . 8 . 24	6 . 8 . 48	9 . 8 . 72
3 . 9 . 27	6 . 9 . 54	9 . 9 . 81
3 . 10 . 30	6 . 10 . 60	9 . 10 . 90

TABLA DE RESTAR

1 para 1 faltan 0	4 para 4 faltan 0	7 para 7 faltan 0
1 . 2 . 1	4 . 5 . 1	7 . 8 . 1
1 . 3 . 2	4 . 6 . 2	7 . 9 . 2
1 . 4 . 3	4 . 7 . 3	7 . 10 . 3
1 . 5 . 4	4 . 8 . 4	7 . 11 . 4
1 . 6 . 5	4 . 9 . 5	7 . 12 . 5
1 . 7 . 6	4 . 10 . 6	7 . 13 . 6
1 . 8 . 7	4 . 11 . 7	7 . 14 . 7
1 . 9 . 8	4 . 12 . 8	7 . 15 . 8

2 para 2 faltan 0	5 para 5 faltan 0	8 para 8 faltan 0
2 . 3 . 1	5 . 6 . 1	8 . 9 . 1
2 . 4 . 2	5 . 7 . 2	8 . 10 . 2
2 . 5 . 3	5 . 8 . 3	8 . 11 . 3
2 . 6 . 4	5 . 9 . 4	8 . 12 . 4
2 . 7 . 5	5 . 10 . 5	8 . 13 . 5
2 . 8 . 6	5 . 11 . 6	8 . 14 . 6
2 . 9 . 7	5 . 12 . 7	8 . 15 . 7
2 . 10 . 8	5 . 13 . 8	8 . 16 . 8

3 para 3 faltan 0	6 para 6 faltan 0	9 para 9 faltan 0
3 . 4 . 1	6 . 7 . 1	9 . 10 . 1
3 . 5 . 2	6 . 8 . 2	9 . 11 . 2
3 . 6 . 3	6 . 9 . 3	9 . 12 . 3
3 . 7 . 4	6 . 10 . 4	9 . 13 . 4
3 . 8 . 5	6 . 11 . 5	9 . 14 . 5
3 . 9 . 6	6 . 12 . 6	9 . 15 . 6
3 . 10 . 7	6 . 13 . 7	9 . 16 . 7
3 . 11 . 8	6 . 14 . 8	9 . 17 . 8

TABLA DE DIVIDIR

1 entre 1 a 1	4 entre 4 a 1	7 entre 7 a 1
1 . 1 . 1	4 . 4 . 1	7 . 7 . 1
2 . 1 . 2	8 . 4 . 2	14 . 7 . 2
3 . 1 . 3	12 . 4 . 3	21 . 7 . 3
4 . 1 . 4	16 . 4 . 4	28 . 7 . 4
5 . 1 . 5	20 . 4 . 5	35 . 7 . 5
6 . 1 . 6	24 . 4 . 6	42 . 7 . 6
7 . 1 . 7	28 . 4 . 7	49 . 7 . 7
8 . 1 . 8	32 . 4 . 8	56 . 7 . 8
9 . 1 . 9	36 . 4 . 9	63 . 7 . 9
10 . 1 . 10	40 . 4 . 10	70 . 7 . 10

2 entre 2 a 4	5 entre 5 a 1	8 entre 8 a 1
2 . 2 . 2	5 . 5 . 1	8 . 8 . 1
4 . 2 . 2	10 . 5 . 2	16 . 8 . 2
6 . 2 . 3	15 . 5 . 3	24 . 8 . 3
8 . 2 . 4	20 . 5 . 4	32 . 8 . 4
10 . 2 . 5	25 . 5 . 5	40 . 8 . 5
12 . 2 . 6	30 . 5 . 6	48 . 8 . 6
14 . 2 . 7	35 . 5 . 7	56 . 8 . 7
16 . 2 . 8	40 . 5 . 8	64 . 8 . 8
18 . 2 . 9	45 . 5 . 9	72 . 8 . 9
20 . 2 . 10	50 . 5 . 10	80 . 8 . 10

3 entre 3 a 1	6 entre 6 a 1	9 entre 9 a 1
3 . 3 . 1	6 . 6 . 1	9 . 9 . 1
6 . 3 . 2	12 . 6 . 2	18 . 9 . 2
9 . 3 . 3	18 . 6 . 3	27 . 9 . 3
12 . 3 . 4	24 . 6 . 4	36 . 9 . 4
15 . 3 . 5	30 . 6 . 5	45 . 9 . 5
18 . 3 . 6	36 . 6 . 6	54 . 9 . 6
21 . 3 . 7	42 . 6 . 7	63 . 9 . 7
24 . 3 . 8	48 . 6 . 8	72 . 9 . 8
27 . 3 . 9	54 . 6 . 9	81 . 9 . 9
30 . 3 . 10	60 . 6 . 10	90 . 9 . 10

Cuaderno Escolar

de

PERTENECIENTE

a Guatemala Book

JUSTO DIAZ DEL CASTILLO.

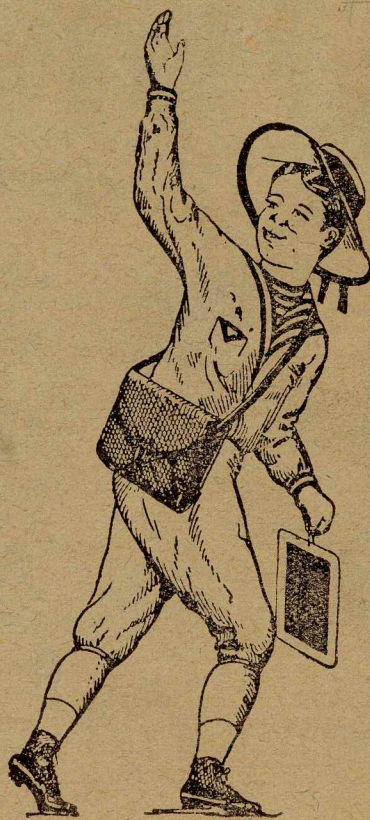
LA CASA QUE SIEMPRE VENDE BARATO.

Gran surtido constante de
Lencería en general,
Calzado, Medicinas paten-
tadas, Ferretería
y Abarrotes.

Fábrica de hielo, Paletas y
Aguas Gaseosas
con agua pura de lluvia.
Concesionario de la deli-
ciosa bebida

SINALCO.

Tenosique, Tab., Méx.



Objects for Guatemala
Box G-1

- S-1-11 42 Shards ✓
- S-12-1 7 Shards ✓
- S-2-18 Cascade Foot ✓
- S-1-18A 13 Shards ✓
- S-18-180 18 Shards ✓
- S-1-24 51 Shards ✓
- S-2-6 1 Figurehead ✓
- S-1-28 41 Shards ✓
- S-1-44 11 Shards ✓
- S-1-46 7 Shards ✓
- S-1-39 4 Shards ✓
- S-2-10 8 Shards ✓
- S-2-12 3 Shards ✓
- S-2-13 1 Sherd ✓
- S-2-14 3 Shards ✓
- S-2-15 1 Sherd ✓
- S-2-7 4 Shards ✓
- S-2-23 Large No. 7 Shards ✓
- S-2-28 3 Shards ✓
- S-7-1 4 Shards ✓
- S-7-2 11 Shards ✓
- S-7-3 49 Shards ✓
- S-7-4 20 Shards ✓

next Page

Box G-1 Continued

- S-7-7 18 sherds ✓
- S-7-8 18 sherds ✓
- S-8-2 4 sherds ✓
- S-8-3 4 sherds ✓
- S-9-1 4 sherds ✓
- S-10-1 2 sherds ✓
- S-10-2 9 sherds ✓
- S-10-3 10 sherds ✓
- S-7-11 3 sherds ✓

Box G-2

- W-22-2 4 sherds ✓
- W-25-2 14 sherds ✓
- W-24-2 4 sherds ✓
- W-22-4 5 sherds ✓
- W-22-5 3 sherds ✓
- W-22-7 5 sherds ✓
- W-25-3 23 sherds ✓
- W-28-6 2 Figurine Fragments (Dhruv) ✓
- W-25-4 3 sherds ✓
- W-28-1 17 sherds ✓
- No. number-before fire 2 obsidians ✓
- " " " " 13 sherds ✓
- S-2-3 " " 2 sherds ✓
- S-2-1 1 conc. fragt. ✓
- W-9-5 " " 1 sherd ✓
- W-17-1 1 sherd ✓
- W-17-11 " " Fragments of conc ✓
- E-3-2 " " 1 sherd ✓
- W-6-14 " " 2 sherds ✓
- M-19-4 " " 1 sherd ✓
- W-14-1 " " 1 sherd ✓
- W-11-2 " " 1 sherd ✓

(over)

Box G-2 Continued

- S-7-6 1 Figurine head ✓
- S-10-2 1 Figurine head ✓
- S-2-24 1 Figurine head ✓
- M-18-7 1 Figurine head ✓
- E-7-6 1 Figurine head ✓
- S-2-15 1 Figurine head ✓
- S-7-2 2 Figurine heads ✓
- S-2-24 1 Figurine head ✓
- E-3-8 Figurine fragmt ✓
- S-1-11 3 Figurine heads ✓
- S-11-2 2 Figurine heads ✓
- W-22-2 1 Figurine head or fragment ✓
- W-17-1 1 Figurine fragment ✓
- S-7-3 1 Figurine head ✓
- E-1-130 1 Figurine head ✓
- No number - 4 figurine fragments ✓
- " " 2 Figurine heads ✓
- W-17-10 29 Shards (numbered W-17-102) ✓
- W-17-10 8 " ✓
- S-1-22 Fragment of morn stone ✓
- S-1-21 Fragment of morn stone ✓
- E-7-10 nucleus of haemitite ✓
- S-7-10 1 large (piece of) mitate ✓

n

- E-1-155 8 Shards ✓
- E-3-14 3 Shards ✓

- 8 Shards ✓
- 3 Shards ✓

Box G-2 Continued

- W-28-25 - Bone fragments ✓
- W-6-17 7 Shards ✓
- W-6-19 8 Shards ✓
- W-17-10 8 Shards ✓
- W-17-1 20 Shards ✓
- W-17-36 52 Shards (large dish) ✓
- W-17-79 3 Shards ✓
- W-17-84 Sherd ✓
- W-17-28 1 piece of burned clay ✓
- W-17-29 Fragment of bone awl ✓
- W-17-51 1 Sherd ✓
- W-17-33 1 Shell fragment ✓
- W-6-9 1 piece of strucco ✓
- M-18-5 10 Shards ✓
- M-18-3 8 Shards, 5 obs. clear piece (small) ✓
- S.E-6-1 9 Shards ✓
- S.E-8-3 1 fig head fragment ✓
- E-7-1 8 Shards ✓
- E-1-142 4 Shards ✓
- E-6-2 15 Shards ✓
- E-7-1 8 Shards ✓
- E-3-15 8 Shards ✓
- E-3-16 5 Shards ✓
- E-3-17 5 Shards ✓
- E-5-2 6 Shards ✓

See next page

Box G-3

W-17-55b - Jadeite rosette ✓
 " N - " " ✓
 B - " " ✓
 C - " " ✓
 V - " " ✓
 =W M - " " ✓
 H - " " ✓
 P - " " ✓
 J - " " ✓
 =U C - " " ✓

W-17-42 (S-2) Shell plate (glyph) ✓
 W-17-42 (S-1) " " " ✓
 W-17-69 Long jadeite bead ✓
 W-17-73 Jadeite cylindrical bead ✓
 W-17-35 Clay ornament ✓
 W-17-67 6 shell ornaments ✓
 W-17-63 Jadeite ear plug (right) ✓
 W-17-8 Jadeite beads (2 strings) ✓
 shell beads (1 string) ✓
 W-17-61 Shell ornament "labrets" ✓
 W-17-37 Broken jadeite bead ✓
 W-17-74 Jadeite small cylindrical bead ✓

Box G-3 Continued

W-17-78 - Two spherical jadeite beads ✓
 1 cylindrical bead ✓
 1 fragment ✓
 W-17-81 Two spherical jadeite beads ✓ ?
 W-17-48e One of a pair of preformal forms ✓
 W-17-57 Jadeite carved pendant ✓
 W-17-40d 4 pieces of jadeite ✓
 W-17-32 1 jadeite rosette ✓ sh.
 W-17-65 2 jadeite beads ✓
 W-17-58 6 jadeite beads ✓
 W-17-87 Shaly haemite band ✓
 W-17-40c Flint knife ✓
 W-17-60 Unworked shell ornaments ✓
 W-17-46 Artificial clay shell ✓
 W-17-50 1 large clay bead ✓
 W-17-52 Large shell ✓
 W-17-40g One piece haemite ✓
 E-1-145 1 dish - piece broken ✓
 E-1-146 1 dish ✓
 W-12-6 Jar ✓
 W-17-40h Hip up - stungay spine ✓
 W-17-7 Spherical clay beads ✓

next page

Box G-3 Continued

- W-17-11 Fragment of Pottery Cover ✓ *check on the 1st*
- W-17-42 104 Shell Plates ✓
- W-17-40A Shell of bivalve shell ✓
- W-17-40B half of thorny oyster shell ✓
- W-17-40f " of bivalve shell (2 pieces) ✓
- W-6-21a 4 flints ✓
1 fragment ✓
- W-6-21e 1 eccentric obsidian, 9 obsidian fragments ✓
- W-6-21i 2 pieces of unced jadeite ✓
- No number 31 obsidians ✓
- " " 8 flints ✓
- E-1-151 5 flints (few?) ✓
- E-1-152 1 flint ✓
- E-1-153 2 flints ✓
- E-1-154 1 flint ✓
- E-1-155 1 flint ✓
- S-1-33 1 flint ✓
- S-1-36 flint knife ✓
- E-1-153 4 obsidians (with question as to no) ✓
- E-1-154 1 obsidian ✓
- E-1-155 4 obsidians ✓
- E-1-2 1 obsidian ✓
- E-7-3 2 obsidians ✓

next page

Box G-3 Continued

- S-1-19 16 banded core ✓
- S-1-33 20 obsidian flake (questioned whether obsidian) ✓
- S-2-23 1 obsidian ✓
- S-2-27 1 obsidian ✓
- S-1-16 2 obsidian ✓
- S-2 1 obsidian ✓
- W-28-8 1 flint knife ✓
- S-11-5 1 flint knife ✓
- W-28-4 flint fragment ✓
- W-28-3 2 small pieces of greenstone ✓
- M-18-3 2 flint chips ✓
- No number 17 jadeite pieces, broad, 5 fragments ✓
figurines ✓
- E-1-2 2 jadeite pieces ✓

(over)

Box G-4

- E-1-158 10 sherds ✓
- E-1-156 9 sherds ✓
- E-1-147 1 pot ✓
- E-1-155 1 pot ✓
- E-1-148 1 pot ✓
- E-3-8 1 sherd ✓
- E-3-12 10 sherds ✓
- E-3-10 2 sherds ✓
- E-3-9 4 sherds ✓
- E-3-12 1 sherd ✓
- S-2-13 2 Figurine Fragments { 2 in catalogue no fragments listed } ✓
- S-1-40 1 shell ✓
- E-1-154 2 Marine or Shery Oysters (broken into ^{bone}) ✓
- E-7-5 shell ✓
- No numbers - 11 shells, 1 stingray spine ✓
- S-7-8 1 figurine whistle ✓
- W-19-2(?) 2 Figurine Fragments ✓
- S-2-11 Figurine (torso?) ✓
- S-1-13 1 Figurine whistle ✓
- S-4-3 2 Figurine torsos and 2 Figurine Fragment(?) ✓
- E-1-157 1 Figurine Fragment ✓
- S-1-13 1 Figurine torso ✓
- S-1-11 1 Figurine whistle ✓

Box G-4 Continued

- W-25-1 1 Figurine Fragment ✓
- S-2-23 1 Figurine head ✓
- No number 1 Figurine torso ✓
- " " 1 Figurine head ✓
- " " 9 Figurine Fragments ✓
- S-7-1 3 Fragment of Fig leg (1 may just be a fragment) ✓
- W-26-1 1 Figurine Fragment ✓
- S-7-4 Duped Ford - Labeled Fig Fragment ✓
- S-10-3 Figurine Fragment (Labeled Fig head) ✓
- W-22-7 2 Figurine Fragment (not in catalogue) ✓
- S-2-17 Speciale shell ✓
- S-1-37 1 pottery disk ✓
- S-1-23 1 pottery disk ✓
- S-1-45 1 pottery disk ✓
- S-7-7 Figurine foot (in catalogue fig. fragments) ✓
- S-10-1 Figurine fragment ✓
- S-7-1 Figurine fragment (in cat. legs) ✓
- W-6-13 1 Figurine fragment ✓
- S-7-7 2 Figurine fragment ✓
- No numbers - (Some numbers but not read ✓)
- " " 1 Figurine hand ✓
- " " 11 Fragments (Some may be legs) ✓
- S-2-11 1 sherd
- S-7-11 1 sherd
- S-2-9 1 sherd
- S-7-4 1 sherd

(over)

Page 12

Book G-4 Continued

S-2-14 1 sherd

W-17-1 1 sherd

21 members 1 sherd

TABLA DE SUMAR

1 y 1 son 2	4 y 1 son 5	7 y 1 son 8
1 y 2 son 3	4 y 2 son 6	7 y 2 son 9
1 y 3 son 4	4 y 3 son 7	7 y 3 son 10
1 y 4 son 5	4 y 4 son 8	7 y 4 son 11
1 y 5 son 6	4 y 5 son 9	7 y 5 son 12
1 y 6 son 7	4 y 6 son 10	7 y 6 son 13
1 y 7 son 8	4 y 7 son 11	7 y 7 son 14
1 y 8 son 9	4 y 8 son 12	7 y 8 son 15
1 y 9 son 10	4 y 9 son 13	7 y 9 son 16
1 y 10 son 11	4 y 10 son 14	7 y 10 son 17

2 y 1 son 3	5 y 1 son 6	8 y 1 son 9
2 y 2 son 4	5 y 2 son 7	8 y 2 son 10
2 y 3 son 5	5 y 3 son 8	8 y 3 son 11
2 y 4 son 6	5 y 4 son 9	8 y 4 son 12
2 y 5 son 7	5 y 5 son 10	8 y 5 son 13
2 y 6 son 8	5 y 6 son 11	8 y 6 son 14
2 y 7 son 9	5 y 7 son 12	8 y 7 son 15
2 y 8 son 10	5 y 8 son 13	8 y 8 son 16
2 y 9 son 11	5 y 9 son 14	8 y 9 son 17
2 y 10 son 12	5 y 10 son 15	8 y 10 son 18

3 y 1 son 4	6 y 1 son 7	9 y 1 son 10
3 y 2 son 5	6 y 2 son 8	9 y 2 son 11
3 y 3 son 6	6 y 3 son 9	9 y 3 son 12
3 y 4 son 7	6 y 4 son 10	9 y 4 son 13
3 y 5 son 8	6 y 5 son 11	9 y 5 son 14
3 y 6 son 9	6 y 6 son 12	9 y 6 son 15
3 y 7 son 10	6 y 7 son 13	9 y 7 son 16
3 y 8 son 11	6 y 8 son 14	9 y 8 son 17
3 y 9 son 12	6 y 9 son 15	9 y 9 son 18
3 y 10 son 13	6 y 10 son 16	9 y 10 son 19

TABLA DE MULTIPLICAR

1 por 1 1	4 por 1 4	7 por 1 7
1 por 2 2	4 por 2 8	7 por 2 14
1 por 3 3	4 por 3 12	7 por 3 21
1 por 4 4	4 por 4 16	7 por 4 28
1 por 5 5	4 por 5 20	7 por 5 35
1 por 6 6	4 por 6 24	7 por 6 42
1 por 7 7	4 por 7 28	7 por 7 49
1 por 8 8	4 por 8 32	7 por 8 56
1 por 9 9	4 por 9 36	7 por 9 63
1 por 10 10	4 por 10 40	7 por 10 70

2 por 1 2	5 por 1 5	8 por 1 8
2 por 2 4	5 por 2 10	8 por 2 16
2 por 3 6	5 por 3 15	8 por 3 24
2 por 4 8	5 por 4 20	8 por 4 32
2 por 5 10	5 por 5 25	8 por 5 40
2 por 6 12	5 por 6 30	8 por 6 48
2 por 7 14	5 por 7 35	8 por 7 56
2 por 8 16	5 por 8 40	8 por 8 64
2 por 9 18	5 por 9 45	8 por 9 72
2 por 10 20	5 por 10 50	8 por 10 80

3 por 1 3	6 por 1 6	9 por 1 9
3 por 2 6	6 por 2 12	9 por 2 18
3 por 3 9	6 por 3 18	9 por 3 27
3 por 4 12	6 por 4 24	9 por 4 36
3 por 5 15	6 por 5 30	9 por 5 45
3 por 6 18	6 por 6 36	9 por 6 54
3 por 7 21	6 por 7 42	9 por 7 63
3 por 8 24	6 por 8 48	9 por 8 72
3 por 9 27	6 por 9 54	9 por 9 81
3 por 10 30	6 por 10 60	9 por 10 90

TABLA DE RESTAR

1 para 1 faltan 0	4 para 4 faltan 0	7 para 7 faltan 0
1 para 2 faltan 1	4 para 5 faltan 1	7 para 8 faltan 1
1 para 3 faltan 2	4 para 6 faltan 2	7 para 9 faltan 2
1 para 4 faltan 3	4 para 7 faltan 3	7 para 10 faltan 3
1 para 5 faltan 4	4 para 8 faltan 4	7 para 11 faltan 4
1 para 6 faltan 5	4 para 9 faltan 5	7 para 12 faltan 5
1 para 7 faltan 6	4 para 10 faltan 6	7 para 13 faltan 6
1 para 8 faltan 7	4 para 11 faltan 7	7 para 14 faltan 7
1 para 9 faltan 8	4 para 12 faltan 8	7 para 15 faltan 8

2 para 2 faltan 0	5 para 5 faltan 0	8 para 8 faltan 0
2 para 3 faltan 1	5 para 6 faltan 1	8 para 9 faltan 1
2 para 4 faltan 2	5 para 7 faltan 2	8 para 10 faltan 2
2 para 5 faltan 3	5 para 8 faltan 3	8 para 11 faltan 3
2 para 6 faltan 4	5 para 9 faltan 4	8 para 12 faltan 4
2 para 7 faltan 5	5 para 10 faltan 5	8 para 13 faltan 5
2 para 8 faltan 6	5 para 11 faltan 6	8 para 14 faltan 6
2 para 9 faltan 7	5 para 12 faltan 7	8 para 15 faltan 7
2 para 10 faltan 8	5 para 13 faltan 8	8 para 16 faltan 8

3 para 3 faltan 0	6 para 6 faltan 0	9 para 9 faltan 0
3 para 4 faltan 1	6 para 7 faltan 1	9 para 10 faltan 1
3 para 5 faltan 2	6 para 8 faltan 2	9 para 11 faltan 2
3 para 6 faltan 3	6 para 9 faltan 3	9 para 12 faltan 3
3 para 7 faltan 4	6 para 10 faltan 4	9 para 13 faltan 4
3 para 8 faltan 5	6 para 11 faltan 5	9 para 14 faltan 5
3 para 9 faltan 6	6 para 12 faltan 6	9 para 15 faltan 6
3 para 10 faltan 7	6 para 13 faltan 7	9 para 16 faltan 7
3 para 11 faltan 8	6 para 14 faltan 8	9 para 17 faltan 8

TABLA DE DIVIDIR

1 entre 1 a 1	4 entre 4 a 1	7 entre 7 a 1
2 entre 1 a 2	4 entre 4 a 2	7 entre 7 a 2
3 entre 1 a 3	4 entre 4 a 3	7 entre 7 a 3
4 entre 1 a 4	4 entre 4 a 4	7 entre 7 a 4
5 entre 1 a 5	4 entre 4 a 5	7 entre 7 a 5
6 entre 1 a 6	4 entre 4 a 6	7 entre 7 a 6
7 entre 1 a 7	4 entre 4 a 7	7 entre 7 a 7
8 entre 1 a 8	4 entre 4 a 8	7 entre 7 a 8
9 entre 1 a 9	4 entre 4 a 9	7 entre 7 a 9
10 entre 1 a 10	4 entre 4 a 10	7 entre 7 a 10

2 entre 2 a 2	5 entre 5 a 1	8 entre 8 a 1
4 entre 2 a 2	5 entre 5 a 2	8 entre 8 a 2
6 entre 2 a 3	5 entre 5 a 3	8 entre 8 a 3
8 entre 2 a 4	5 entre 5 a 4	8 entre 8 a 4
10 entre 2 a 5	5 entre 5 a 5	8 entre 8 a 5
12 entre 2 a 6	5 entre 5 a 6	8 entre 8 a 6
14 entre 2 a 7	5 entre 5 a 7	8 entre 8 a 7
16 entre 2 a 8	5 entre 5 a 8	8 entre 8 a 8
18 entre 2 a 9	5 entre 5 a 9	8 entre 8 a 9
20 entre 2 a 10	5 entre 5 a 10	8 entre 8 a 10

3 entre 3 a 1	6 entre 6 a 1	9 entre 9 a 1
6 entre 3 a 2	6 entre 6 a 2	9 entre 9 a 2
9 entre 3 a 3	6 entre 6 a 3	9 entre 9 a 3
12 entre 3 a 4	6 entre 6 a 4	9 entre 9 a 4
15 entre 3 a 5	6 entre 6 a 5	9 entre 9 a 5
18 entre 3 a 6	6 entre 6 a 6	9 entre 9 a 6
21 entre 3 a 7	6 entre 6 a 7	9 entre 9 a 7
24 entre 3 a 8	6 entre 6 a 8	9 entre 9 a 8
27 entre 3 a 9	6 entre 6 a 9	9 entre 9 a 9
30 entre 3 a 10	6 entre 6 a 10	9 entre 9 a 10

SHERDS NOT PACKED FOR PENN

W-14-1
W-17-2
W-17-11
W-17-36
W-17-51
W-17-79
W-19-2
W-20-?
W-24-2
W-28-6
E-1-144
E-1-145
E-1-146
E-1-147
E-1-148
E-1-158
E-1-130 -- only one head packed and received
E-3-13
E-3-8
E-7-6
E-8-1
S-1-27 -- only 2 figurines received; 1 miss^{ing}
S-1-18
S-1-20
~~S-1-23~~
S-1-24-2
S-2-2
S-2-3
S-2-8
S-2-9
S-2-22
S-2-24
S-2-25
S-11-3
S-11-4
S-11-5
M-18-7
M-19-4

OK E-2-1 received; not on list -- from last y

SHERDS PACKED BUT NOT FOUND

W-25-2 (the figurine fragment is here)
E-1-159
E-3-9
~~E-7-9~~
S-8-2
~~S-1-106 (?) - not specifically listed for Penn~~

Missing

~~W-6-51c - sherds~~

W-8-2 - sherd

W-17-36 sherds - ?

W-20-2 sherd

E-7-2a - 3 eccentric obsidians

E-7-4 - flint knife

E-7-7 - bone

S-1-29 - bones

S-1-43 flint knife tip

S-2-7 sherd

S-2-20 figurine lost

	Jade	Flint	Obsidian	Pyrite	Stone	Shell	Bone	Human bone & teeth	Stones	Shells	Vessels	Figurines
W-6-6		*	*			*				*		
W-6-7					*	*				*		
W-6-8					*	*				*		
9									*			
10										*		
11	*	*	*				*			*		
12										*		
13										*		*
14								*		*		
15								*		*		
16								*		*		
17										*		
18										*		
19										*		
20										*		
W-8-1										*		
2										*		
3										*		
4										*		
5							*			*		
6										*	*	
7										*		*
8							*			*		*
9										*		
W-12-1										*		
2						*				*		
3					*					*		
4		*								*		
5										*		
6										*	*	
7	*	*			*	*	*			*		*
8										*		*
9										*		
10					*			*		*		
11					*					*		
W-9-1										*		*
2										*		*
3										*		*
4										*		*
5										*		*
6										*		*
7										*		*
W-10-1										*		*
2										*		*
3										*		*
4										*		*
5										*		*
W-11-1										*		*
2										*		*
3										*		*
4										*		*
5										*		*
6										*		*
7										*		*
W-19-1										*		*
2										*		*
3										*		*
W-20-1										*		*
2										*		*
3										*		*
4										*		*

Jade Fli. Obs Pyr Sto Shell Bom Hum Stuc Sher Pot Fig

W-21-1

*

W-13-1

*

W-14-1

*

W-15-1

*

W-16-1

*

W-17-87

IN SAFE

- W-17-4 - only one of this type. (1)
- W-17-8 (3 stings) (1)
- W-17-32 - 1 (only 2 of exact type) (1)
- W-17-37 (1)
- W-17-40 d, e, g (1) *or at least one - problematical form*
- W-17-42 (some pieces) (1) *or 2*
- W-17-43 (1)
- W-17-55 a, b, c, d, e, f, g, h, i, j, k, (l transferred to W-17-70) m, n, o, p, q, u, r, s, t, v, w (1) *10 D F v*
- W-17-56 (1)
- W-17-57 (1)
- W-17-58 (6)
- W-17-63 (1)
- W-17-64 (1)
- W-17-65 (2)
- W-17-66 - or should be repaired here will crumble. (1)
- W-17-68 (1)
- W-17-69 (1)
- W-17-70 probably unique - very delicate work & not showy (1)
- W-17-71 inscription - balanced by delicate figurine. (1)
- W-17-72 (1)
- W-17-73 (1)
- W-17-74 (1)
- W-17-78 (4)
- W-17-81 (2)
- W-17-82 probably unique - can restore whole jaw. (1)
- W-17-85 - unusual if not unique - use of natural shape of bone to achieve result. (1)
- W-17-86 (1)
- W-17-87 shorter, but surer of restoration. (1)

43

39

BOXES

- W-17-1 (25) (6) W-17-67 (6)
- W-17-3 bone (1) (1) W-17-75 (1)
- W-17-7 (61) (6) W-17-76 for identification - copal? (1)
- W-17-10 (41) (104) W-17-77 bone (1)
- W-17-11 1 of 2. (1) W-17-79 (1)
- W-17-17 bone (2) (1) W-17-80 leather for identification (1)
- W-17-20 (1) (1) W-17-83 paint for identification (1)
- W-17-24 (1) (1) W-17-84 (1)
- W-17-25 (1) (1) W-17-88 (1)
- W-17-28 (1) (1) W-17-89 bone (1)
- W-17-29 (1) (1) W-17-90 " (1)
- W-17-30 bone (1) (1) W-17-91 rare here. (1)
- W-17-31 (1) (1)
- W-17-33 (1) (1)
- W-17-34 (1) (1)
- W-17-35 (1) (1)
- W-17-36 - almost a plate (1)
- W-17-38 for identification (hair) (1)
- W-17-39 (1) (1)
- W-17-40 a, b, c, f, h, i - bone for identification (10)
- W-17-41 bones - skeleton C. (1)
- W-17-42 - please let me show types. (104) (104)
- W-17-45 (1) (1)
- W-17-46 (1) (1)
- W-17-47 - has to be restored (1)
- W-17-48 (1) (1)
- W-17-49 (24) (1)
- W-17-50 (1) (1)
- W-17-51 (1) (1)
- W-17-52 (1) (1)
- W-17-53 bones - skeleton A (1)
- W-17-54 " B (1)
- W-17-59 (10) " C (1)
- W-17-60 (2) (2)
- W-17-61 - or 62 - position is evidence for calling these labrets - many from cenote at Chichen (1)
- W-17-62 (1)

do together

LOST IN FIRE

W-17-5

~~W-17-6~~

W-17-9

W-17-12

W-17-13

W-17-14

W-17-15

W-17-16

~~W-17-25~~

W-17-26

W-17-27

(ON DESK READY FOR GUATEMALA

W-17-2

W-17-10 (more)

DISCARDED

W-17-19

W-17-21

W-17-23

TRANSFERRED

W-17-18 transferred to W-17-53

W-17-22 " " " W-17-86

W-17-44 " " " W-17-32

W-17-55L " " " W-17-70

(W-17-70 " " W-17-8)

W-17-6 " " W-17-42