

SURVEYOR'S NOTE
BOOK

C.
L("#"
1932

(No. 1, of 1932)

Fred P. Parris

KEUFFEL & ESSER CO.

DRAWING MATERIALS

AND

SURVEYING INSTRUMENTS.

NEW YORK.

CHICAGO. ST. LOUIS. SAN FRANCISCO. MONTREAL.

TABLES FOR EXCAVATIONS AND EMBANKMENTS.

DISTANCES FROM CENTER OF ROADWAY FOR CROSS-SECTIONING.
ROADWAY 18 FEET WIDE. SIDE SLOPES 1 TO 1.
FOR SINGLE TRACK EXCAVATION.

"Copyright, 1895, by Keuffel & Esser Co."

	0	.1	.2	.3	.4	.5	.6	.7	.8	.9	
0	9.0	9.1	9.2	9.3	9.4	9.5	9.6	9.7	9.8	9.9	0
1	10.0	10.1	10.2	10.3	10.4	10.5	10.6	10.7	10.8	10.9	1
2	11.0	11.1	11.2	11.3	11.4	11.5	11.6	11.7	11.8	11.9	2
3	12.0	12.1	12.2	12.3	12.4	12.5	12.6	12.7	12.8	12.9	3
4	13.0	13.1	13.2	13.3	13.4	13.5	13.6	13.7	13.8	13.9	4
5	14.0	14.1	14.2	14.3	14.4	14.5	14.6	14.7	14.8	14.9	5
6	15.0	15.1	15.2	15.3	15.4	15.5	15.6	15.7	15.8	15.9	6
7	16.0	16.1	16.2	16.3	16.4	16.5	16.6	16.7	16.8	16.9	7
8	17.0	17.1	17.2	17.3	17.4	17.5	17.6	17.7	17.8	17.9	8
9	18.0	18.1	18.2	18.3	18.4	18.5	18.6	18.7	18.8	18.9	9
10	19.0	19.1	19.2	19.3	19.4	19.5	19.6	19.7	19.8	19.9	10
11	20.0	20.1	20.2	20.3	20.4	20.5	20.6	20.7	20.8	20.9	11
12	21.0	21.1	21.2	21.3	21.4	21.5	21.6	21.7	21.8	21.9	12
13	22.0	22.1	22.2	22.3	22.4	22.5	22.6	22.7	22.8	22.9	13
14	23.0	23.1	23.2	23.3	23.4	23.5	23.6	23.7	23.8	23.9	14
15	24.0	24.1	24.2	24.3	24.4	24.5	24.6	24.7	24.8	24.9	15
16	25.0	25.1	25.2	25.3	25.4	25.5	25.6	25.7	25.8	25.9	16
17	26.0	26.1	26.2	26.3	26.4	26.5	26.6	26.7	26.8	26.9	17
18	27.0	27.1	27.2	27.3	27.4	27.5	27.6	27.7	27.8	27.9	18
19	28.0	28.1	28.2	28.3	28.4	28.5	28.6	28.7	28.8	28.9	19
20	29.0	29.1	29.2	29.3	29.4	29.5	29.6	29.7	29.8	29.9	20
21	30.0	30.1	30.2	30.3	30.4	30.5	30.6	30.7	30.8	30.9	21
22	31.0	31.1	31.2	31.3	31.4	31.5	31.6	31.7	31.8	31.9	22
23	32.0	32.1	32.2	32.3	32.4	32.5	32.6	32.7	32.8	32.9	23
24	33.0	33.1	33.2	33.3	33.4	33.5	33.6	33.7	33.8	33.9	24
25	34.0	34.1	34.2	34.3	34.4	34.5	34.6	34.7	34.8	34.9	25
26	35.0	35.1	35.2	35.3	35.4	35.5	35.6	35.7	35.8	35.9	26
27	36.0	36.1	36.2	36.3	36.4	36.5	36.6	36.7	36.8	36.9	27
28	37.0	37.1	37.2	37.3	37.4	37.5	37.6	37.7	37.8	37.9	28
29	38.0	38.1	38.2	38.3	38.4	38.5	38.6	38.7	38.8	38.9	29
30	39.0	39.1	39.2	39.3	39.4	39.5	39.6	39.7	39.8	39.9	30
31	40.0	40.1	40.2	40.3	40.4	40.5	40.6	40.7	40.8	40.9	31
32	41.0	41.1	41.2	41.3	41.4	41.5	41.6	41.7	41.8	41.9	32
33	42.0	42.1	42.2	42.3	42.4	42.5	42.6	42.7	42.8	42.9	33
34	43.0	43.1	43.2	43.3	43.4	43.5	43.6	43.7	43.8	43.9	34
35	44.0	44.1	44.2	44.3	44.4	44.5	44.6	44.7	44.8	44.9	35
36	45.0	45.1	45.2	45.3	45.4	45.5	45.6	45.7	45.8	45.9	36

Calculated by Julien A. Hall, M. Am. Soc. C. E.

SURVEY OF PIEDRAS NEGRAS

FIELD NOTES.

1932

Base Number 1

1932 Expedition. 1.4

26.6 x Riv Cors + .3 x Riv x Cors.

⌘ at A.

Rod reading on A	-	1.442
" " B	-	1.702
		<hr/>
diff in Elev.		.260

⌘ at B

Rod reading on B	-	1.388
" " A	-	1.720
		<hr/>
diff in Elev.		.432

.260
<hr/>
432
<hr/>
2 692
<hr/>
3.46

+ perpendicular

B: 1.388
<hr/>
346
<hr/>
1.042

+ Subtract 4 mi
- Add 4 mi

T.A. INSTRUMENTS

T.A. D.R. Pencil & leads

WATER colors 7.50 * BB 3.00

SLIDE RULE

2 TRIANGLES

HOKISS STAPLER. $\frac{1}{2}$ LAY STAPLES

PENCILS

①

SURVEY of RUINS A PIEDRAS NEGRAS
ACROPOLIS.

STA.	DIST	AZ. ANG	BEAR	VERT. ANG	DIF EL.	ELG. 200
at A.		0° on Mag. N.			HI 1.42	
at B.	1.14 1.725	58.5	143° 30' - 13'	- 37'	1.69	201.69

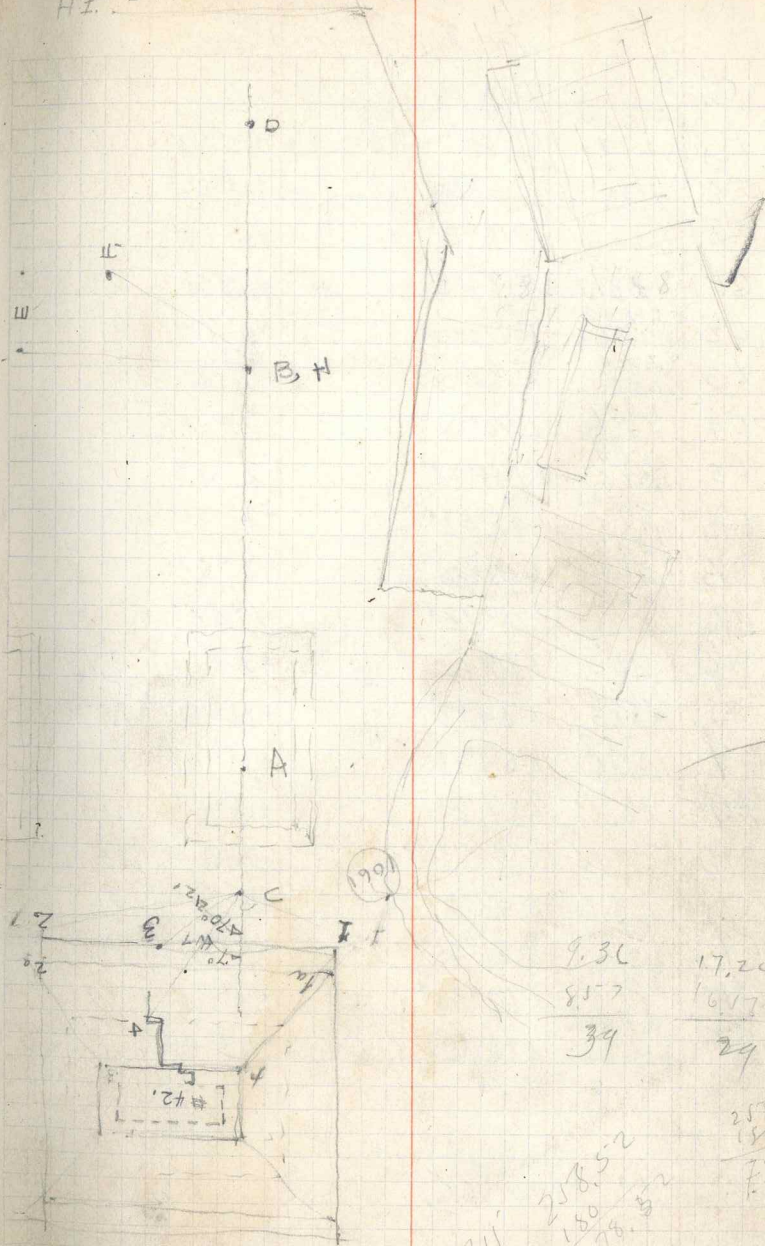
X

②

SEE PAGE 71

LOWER PLAZA.

Point	DIST	HORIZ L.	OBS. BEAR.	VERT L.	H.I. ^(M)
At A	1.870				1.142
H ₁ /B	0.975	0°		-1°55'	
C	1.580 1.255	180°	N28°30'E	-3°49'	
At C.		60° SW	LINE AC.	N28°30'E	
A	1.560 1.255	0°	N28°30'E	+4°33'	
42-4	1.560 1.280	R. 7°40'		+24°25'	
42-5	1.788 1.458	R. 10°3'		+25°14'	H.I. 1.62
42-6	2.145 1.775	R. 11°19'		+26°0'	H.I. 1.96
42-2	1.580 1.262	R. 70°22'		-0°15'	H.I. 1.42
42-3	1.485 1.350	R. 39°3'		+7°15'	
42-1a	1.333 1.31	L. 28°30'		+9°52'	
42-2a	1.580 1.260	R. 54°23'		+5°15'	
At G	3.80 3.71	height only.		-14°29'	H.I. 3.8
Dr 7		height only 2.5 M.			
Mason 8		2.5 + 2.86.	5.36 = check.		
At B, H		0° ON A.	N28°30'E		H.I. 1.42
A	1.870 0.975	0°		+2°10'	1.42
pg. 11 x 29	1.755 1.09	L. 9°40'		+5°6'	
28	1.578 1.246	L. 23°38'		+9°36'	
4	1.66 1.18	L. 64°02'		+17°12'	
A ₁	1.95 0.90	L. 94°42'		+18°15'	
11	1.680 1.60	L. 120°0'		+16°42'	
D	1.65 1.19	L. 180°0'		+0°3'	
E	1.91 0.93	L. 258°50'	S 50°30'E	-2°14'	
F	1.624 1.217	L. 241°33'		-0°41'	

H.I. ^(M) = MEASURED H.I. at T

24215
180
22115

25852
180
7052

③

	DIST	HOR. ANG	OBS BEAR	VERTL	H. I.
At C ₁		0° 0' A.			
A ₁	1.555 1.289 1.578	0° 0'	N39°30' E	+3°10' ± 12	1.42
58	1.3135	R6°14'		+1°50'	
59	1.52 1.321	R16°5'		+5°16'	
61	23.2 1.48	R97°5'		+5°0'	2.00
62	1.366	R110°0'		-0°42'	1.42
63	1.468 1.375	R.66°30'		-0°30'	
64	1.456 1.384	L90°25'		-2°10'	
65	1.264 1.377	L144°28'		-2°33'	
67 ₁	1.539 1.305	L45°58'		-1°50'	dig out floor
67 ₂	1.528 1.314	L51°10'		-2°8'	"
67 ₃	1.527 1.315	L11°42'		-1°27'	"
56	40 1.18	L40°15'		+11°16'	1.75
E.	0.823	L44°0'		+12°35'	1.00
69	1.552 1.285	L64°16'		+11°0'	1.42
70	28.2	L87°21'		+8°5'	1.75
At 70	facing North	0° 0' on N39°30' E		M.H.I. =	1.45
C.	28.2 1.474	R92°39'		-8°5'	2.00
69	1.365	R21°45'		-8°20'	1.42
71	1.71 1.13	L62°35'		-17°5'	
72	2.18 0.62	L147°32'		-37°41'	1.42

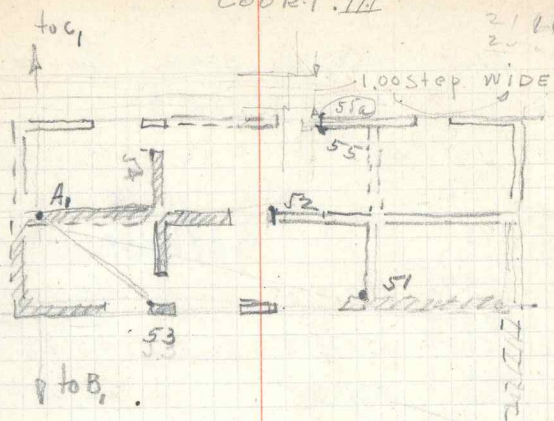
SEE page (66)

SEE page (14)

COURT. III

2/16

2

142
1.83 171
29

On N39°30' E

not a 0.70

asumacencia

BZ.

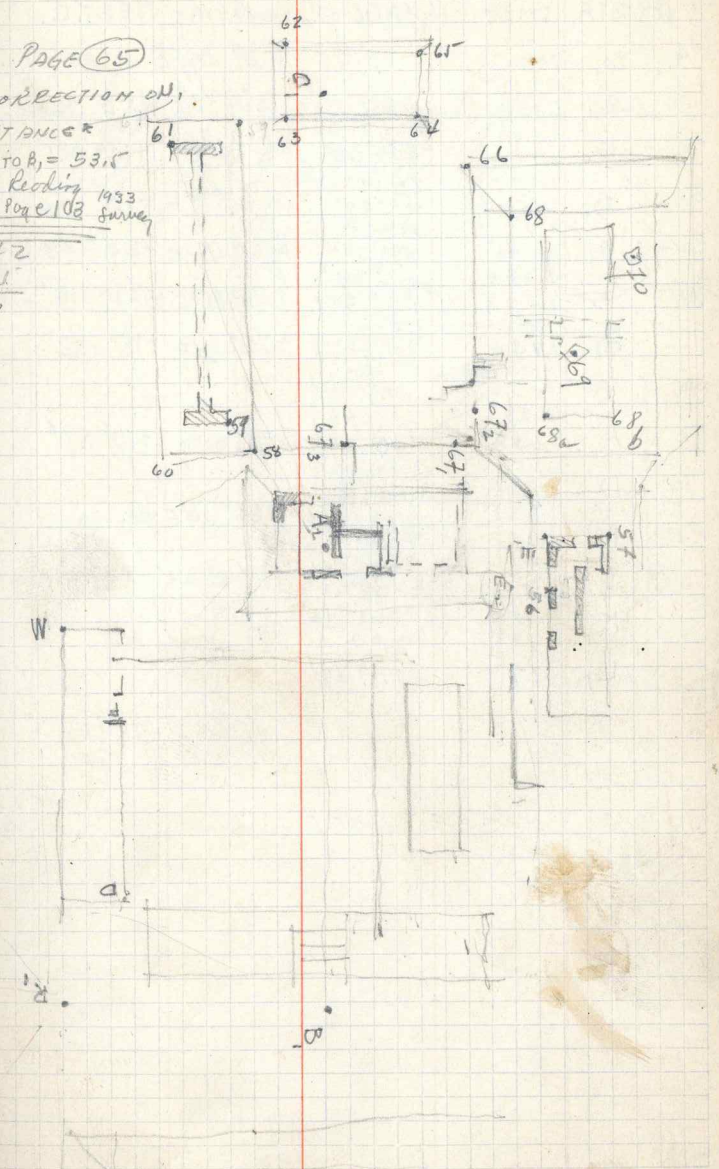
STATION	DIST	HOR. ANG	OBS. BEAR.	VERT. ANGLE	H.I.
0° ON LINE A, B,					
at A,			π above stake	130	
B.	1.68 1.11	0°	N 39°30'E 10°59'		1.42
R.	1.690 1.155	R 21°10'		-11°13'	
D.	1.635 1.215	R 17°15'		-13°26'	
F.	1.54 1.30	R 39°25'		+24°45'	
E.	1.544 1.296	L 94°00'		+14°45'	
51.	1.553 1.29	L 82°46'		+13°55'	
58	1.726 1.674	L 205°4'		—	1.70
60	1.65 1.55	L 253°50'		—	1.60
53	2.02 1.98	L 55°25'			2.00
51	3.349 3.253	L 81°6'		+10°41'	3.30
54	1.315 1.287	L 140°19'		—	
52	3.130 3.0709	L 105°29'		+4°10'	3.1
55	2.190 2.110	L 123°30'		0°	2.15
67 ₁	3.799 3.603	L 120°27'		0°	3.7
67 ₂	3.450 3.245	L 127°55'		0°	3.35
66	2.140 1.815	L 170°11'		0°	2.00
67 ₃	2.042 1.958	L 127°58'		-4°30'	2.0
59	1.466 1.375	L 216°27'		+4°10'	1.42
61	1.600 1.239	L 219°25'		-1°0'	1.42
65.	34.	L 172°12'		-2°36'	1.42

219.20
180
3928'

COURT III
↓

238
218
17
118
117
135

SEE PAGE (65)
CORRECTION ON DISTANCE*
from A, to B, = 53.15
ON Rod Reading 1953
also See Page 108 Survey
142
121
19

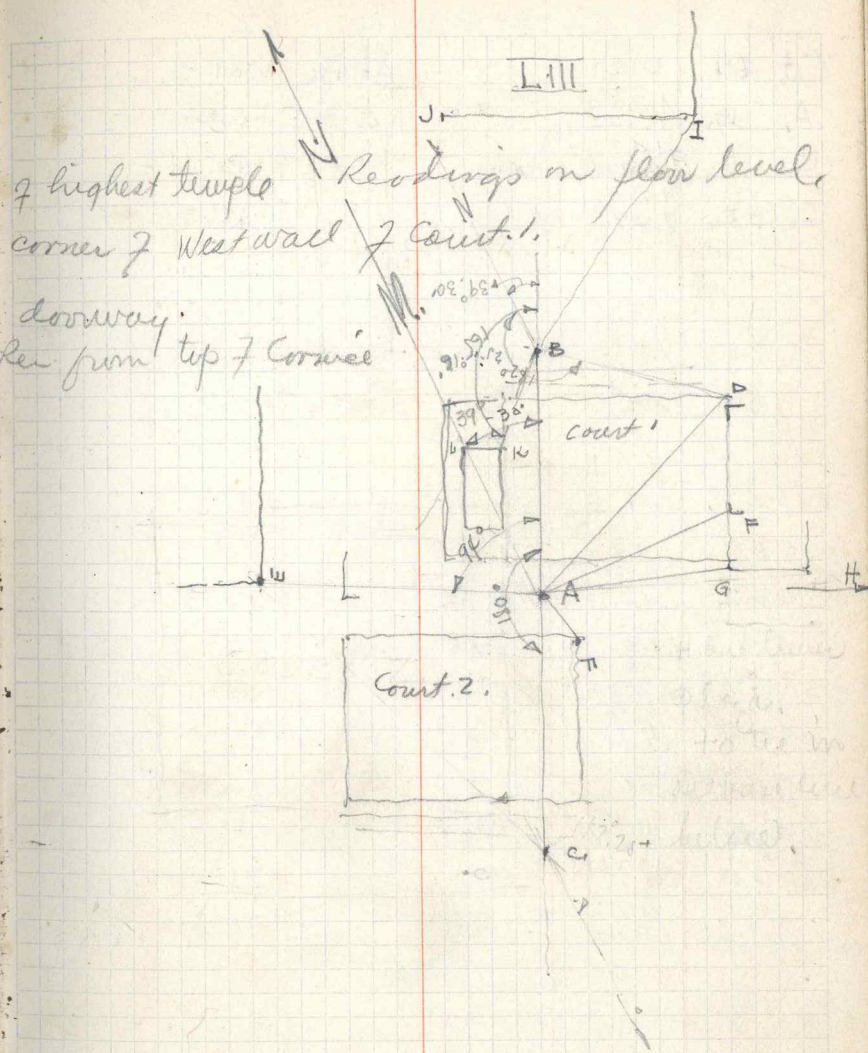


⑤

ON TOP of ACROPOLIS

Point	STA	DIST	ANGLE	OBS bearing	VERT. L. H.I.
A, B,	1.116	1.688	39° 36'	N 39° 30' E - 10° 59'	14.2
C,	1.288	1.572	180°	S 39° 30' W - 3° 36' 13"	corner
E,	1.293	1.250	+234° 30'	N 54° 30' W + 14° 39'	"
D,	1.200	1.600	65° 19'	N 63° 19' E - 13° 30'	
F,	1.3	1.545	81° 6'	N 81° 6' E - 24° 49'	doorway
G,	1.332	1.505	39° 30'	S 76° 25' E - 25° 3'	reading taken from top of corner
H,	1.940	1.940	118° 9'	S 66° 50' E - 18° 12'	
A,	1.158	1.688	-39° 30'	S 39° 30' N + 10° 59'	
D,	1.275	1.56	140° 30'	N 63° 10' E - 13° 0'	
I,	1.295	1.55	182° 15'	N 34° 52' E - 13° 37'	
K,	1.355	1.488	165° 16'		
L,	17.		139° 19'		

SEE PAGE 6A



⑥

PYRAMID 42

Lat	DN	DIST	OBS BEAR.	VERT L.	HI
A ₂	B ₂	1.300	N 20° 30' E	+ 34° 35'	1.4
		1.555			
C ₂	B ₂	6.7 MEAS. TAPE		0° 51'	
		1.395			
C ₂	D ₂	1.491		- 35° 51'	

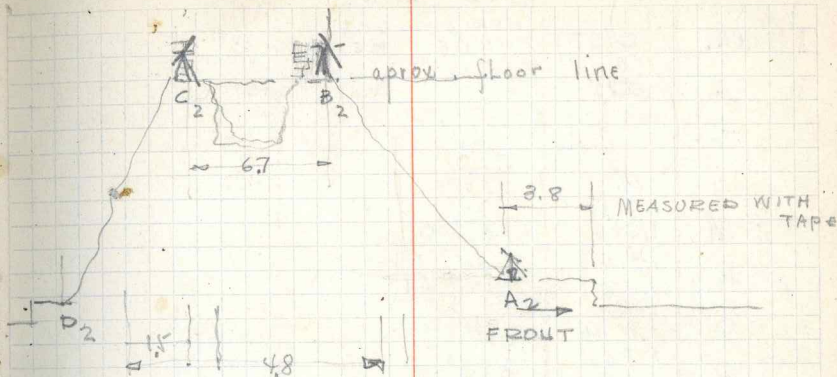
June 4-32
SEE DR MASON'S NOTES

Lat	DX	0° ON C	MAS. H. 1/2		
A.C.	1.73	0° 0'	S 39° W	- 24° 37'	1.55
	1.37				
1050	1.498	160° 3'		- 4° 10'	1.55
	1.502				
1059	1.497	151° 30'		- 47° 0'	"
	1.503				
1051	1.622	123° 55'		- 21° 45'	"
	1.478				
1052	1.6215	118° 14'		- 24° 32'	"
	1.4785				
1053	1.92	101° 15'		- 22° 45'	1.85
	1.78				
1056	1.6115	100° 31'		- 31° 5'	1.55
	1.4885				
1054	1.611	93° 5'		- 30° 35'	1.55
	1.489				
1057	1.902	88° 25'		- 34° 0'	1.85
	1.793				
1055	1.602	98° 40'		- 44° 8'	1.55
	1.498				
1060	1.628	95° 16'		- 21° 40'	1.55
	1.472				
1058	1.57	R 138° 30'		+ 38° 35'	"
	1.53				

Lat	AC	0° ON X.	MAS. H. 1/2		
ΔX	1.905	0° 0'	N 39° E	+ 25° 5'	1.72
	1.535				
Δ88	1.581	R 62° 42'	S 78° 30' E	- 1° 55'	1.32
	1.509				
ΔA.	1.486	R 69° 43'	S 28° 30' W	+ 4° 14'	1.32
	1.104				
1061	1.3785	123° 10'		- 0° 45'	"
	1.2615				

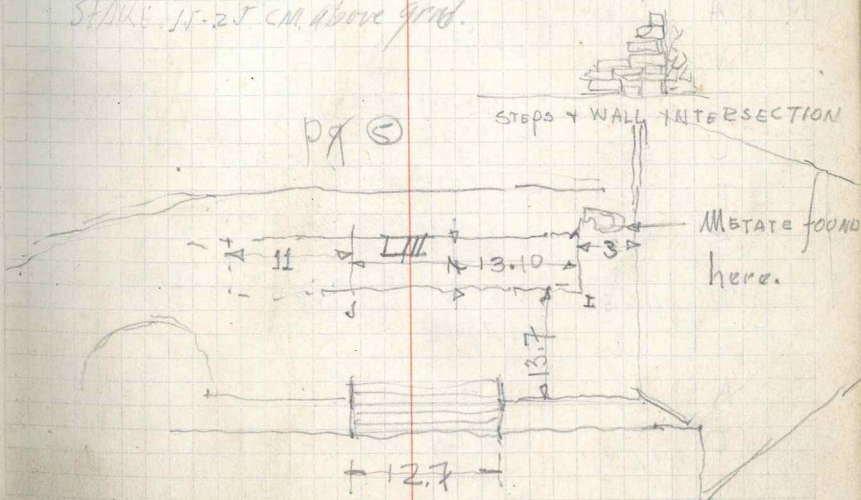
SEE page 70

Σ 20
Σ 10.5



1056. - 1.85 height of wall above floor level.

STAKE 15-25 cm. above grad.

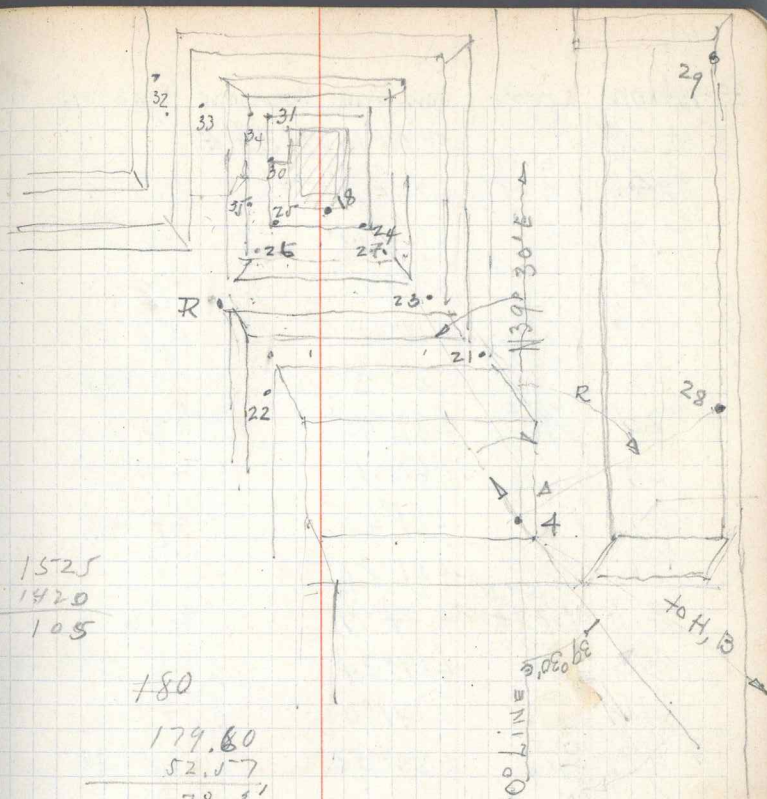


B.

Station	DIST.	Hor. ANG	OBS BEAR	VERT. ANG	H.I.
At II	1.68 1.16	R 47° 49'	N 39° 30' E	-16° 40'	1.42
H.B.		L 70° 0'			
At 4.					
18		L 37° 12'	N 2° 12' E		
24	1.560 1.280	L 32° 38'		+31° 26'	
25	1.588 1.260	L 49° 11'		+26° 15'	
26	1.565 1.271	L 51° 42'		+25° 21'	
27	1.520 1.320	L 30° 35'		+25° 38'	
23	1.493 1.342	L 24° 39'		+21° 45'	
28	1.570 1.270	R 52° 57'		-15° 0'	
29	1.691 1.150	R 20° 52'		-8° 14'	
At R		0° 0' N	N 39° 30' E		
21	No Reading	L 270° 31'	90° 31'	-6° 10'	
23	1.53 1.313	L 276° 46'	96° 46'	+1° 42'	
27	1.526 1.315	L 286° 19'	106° 19'	+17° 10'	
24	1.525 1.377	L 291° 16'	111° 16'	+21° 0'	
25	1.507 1.335	L 302° 26'	122° 26'	+24° 05'	
26	1.492 1.352	L 298° 8'	118° 8'	+23° 49'	
30	1.532 1.308	L 333° 15'	153° 15'	+18° 26'	
31	2.035 1.775	L 336° 31'	156° 31'	+15° 0'	1.90
B	Check.	L 80° 18'			1.42
32	1.535 1.310	L 3° 8'	3° 8'	-8° 34'	
33	2.1	L 357° 30'	177° 30'	-2° 23'	
34	1.532 1.312	L 342° 44'	162° 44'	+12° 0'	
35	1.500 1.340	L 336° 38'	156° 38'	+16° 42'	

Check from R. - A + B₁

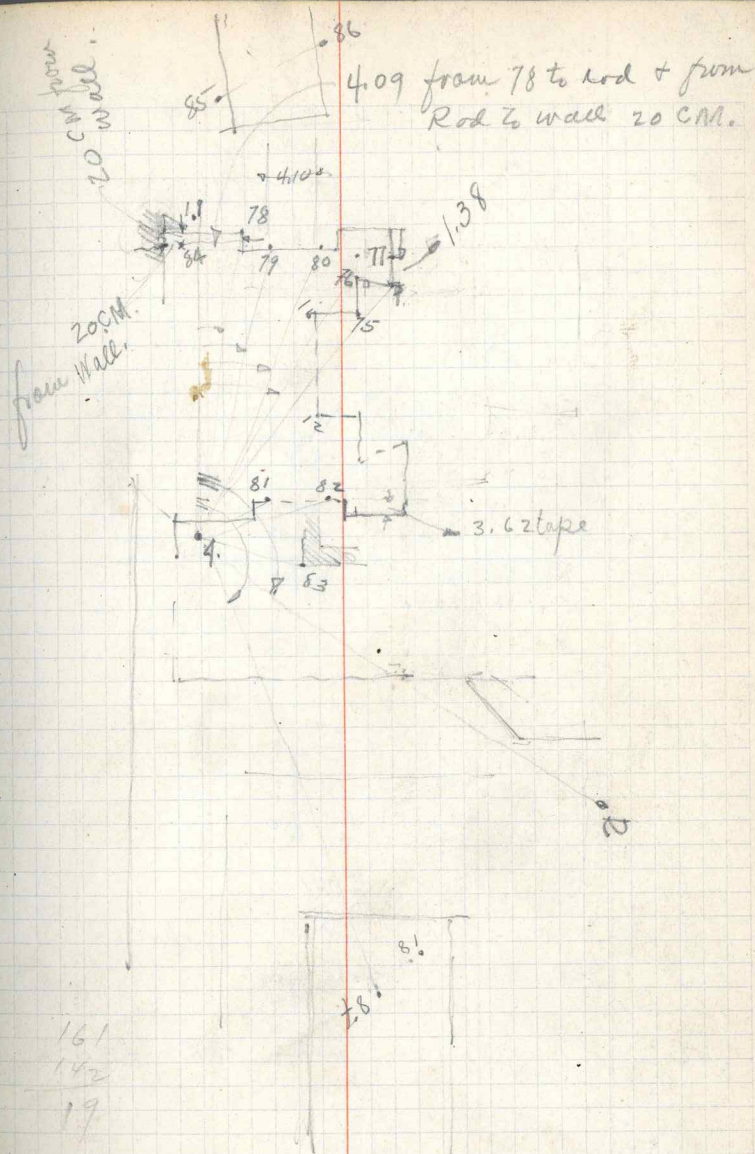
cont.



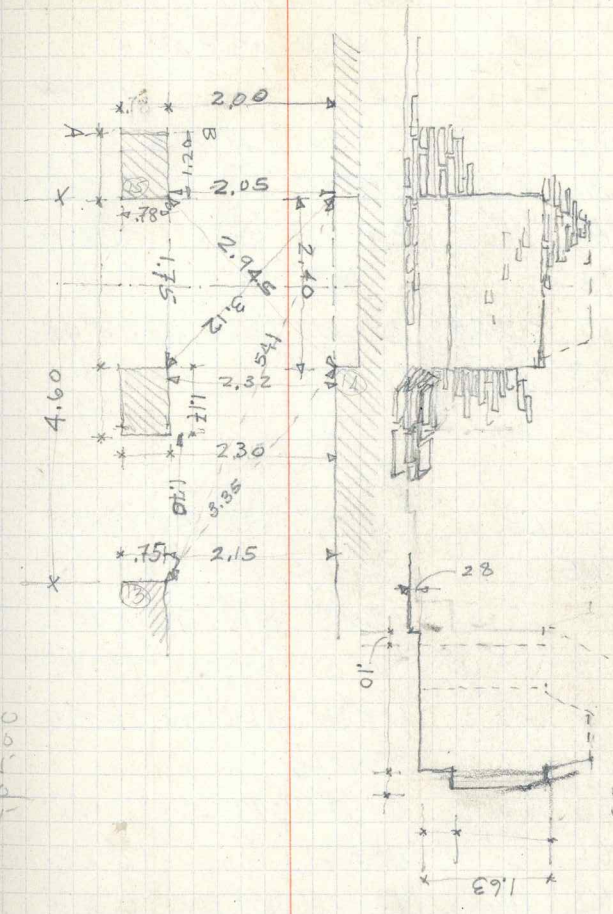
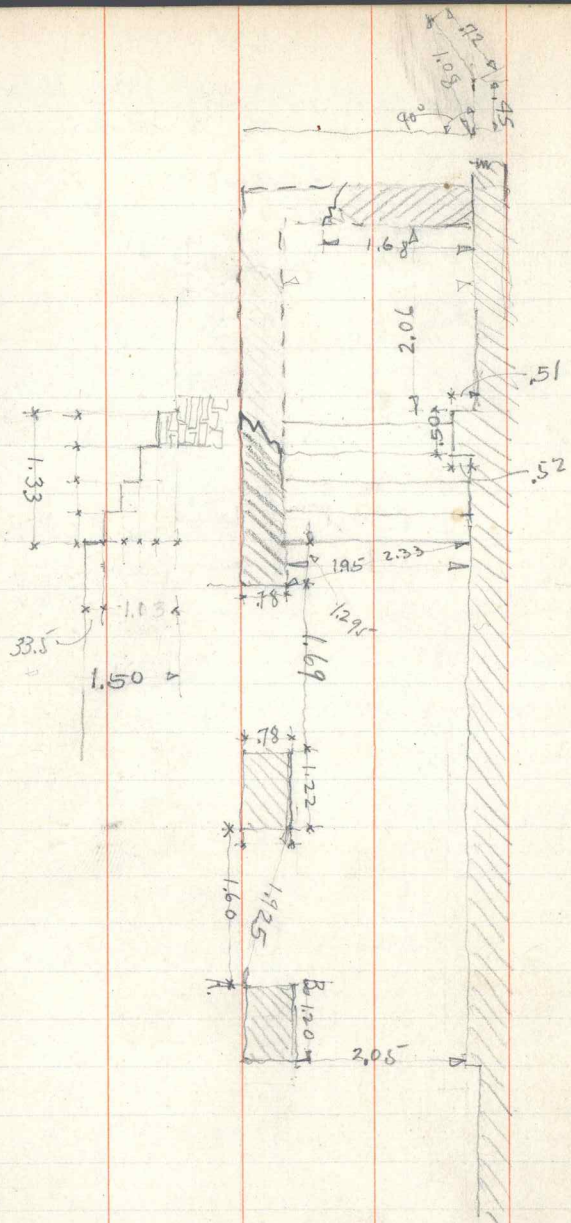
(12)

Station	Dist.	Hor. Ang. obs. bear.	Vert. Ang.	H.I.
At 29	1.75			
B, H,	1.095	L 200°16'	-4°42'	
At 4,		0°0'N 11		
11	1.64 1.20	0°0'	N 31°45' E +1°52'	1.42
R	1.17 0.83	R 118°30'	+13°10'	1.00
83	3.5-14 3.40	R 90°50'	0°0'	3.46
81	4.73	R 51°30'	0°0'	4.225
81.	1.477 1.363	R 51°31'	-12°58'	1.42
82.	1.095 1.341		-9°30'	1.42
82	3.837	R 63°56'	0°0'	3.90
75	1.578 1.265	R 32°2'	-4°30'	1.42
76	1.590 1.250	R 30°14'	-4°8'	1.42
77	0.68 0.32	R 32°51'	-3°35'	0.50
84	1.625 1.22	L 0°10'	-3°37'	1.42
79	1.590 1.242	R 15°14'	-4°45'	1.42
80	1.60 1.240	R 21°35'	-4°21'	1.42
85	1.670 1.1715	R 7°37'	+2°16'	1.42
# 8	1.683			
86	1.16	R 11°30'	+2°25'	1.42
87	1.01 1.23	R 153°20' N 5°0' E	+30°44'	1.42

50



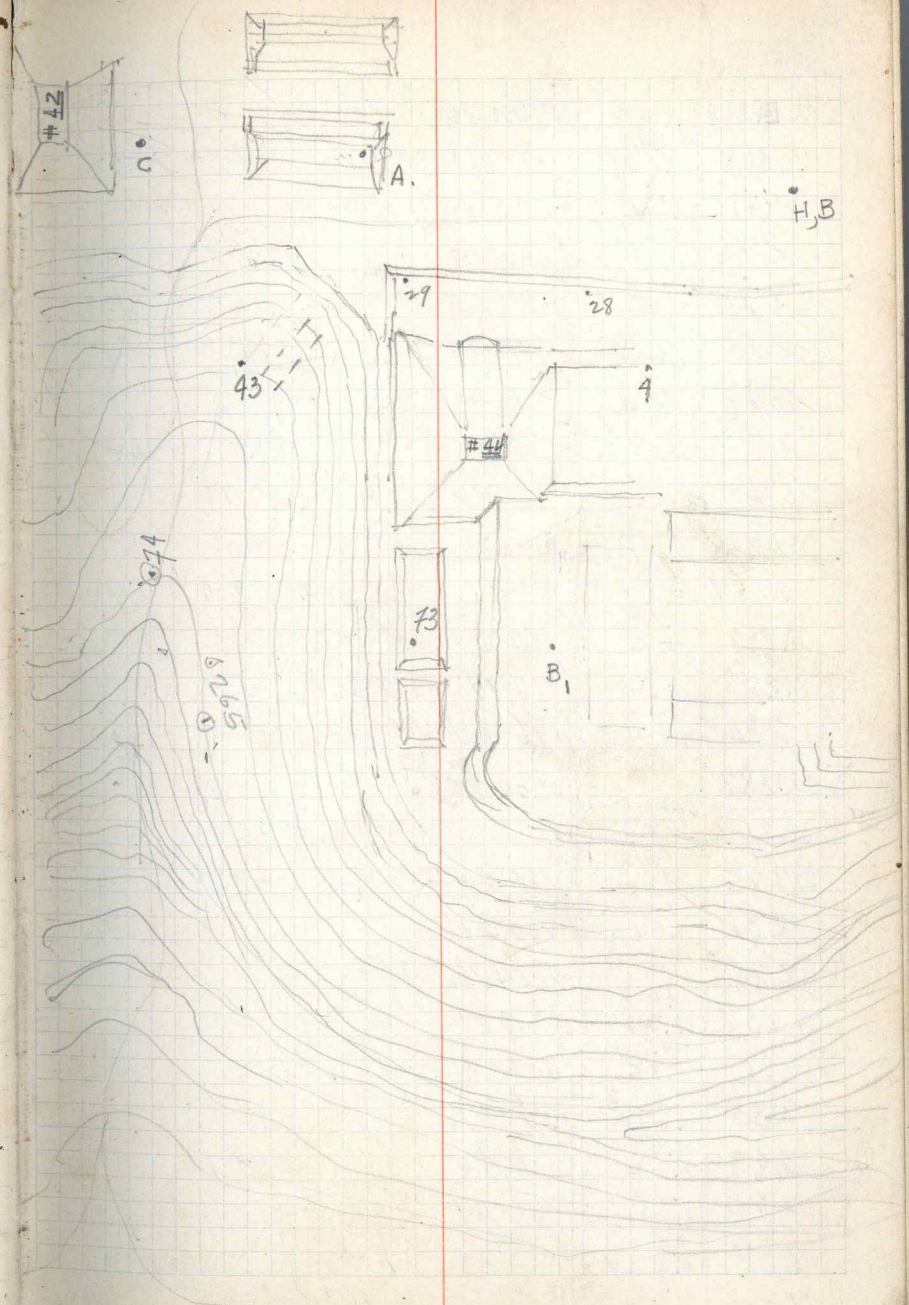
161
142
19



2.30
 .10
 7.1
 1.70
 4.35

⑭ SEE PAGE 3

STATION	DIST.	Obs HOR ANGLE	OBSERVED BEARING	VERT ANGLE	H.I.
At B,			0° 0' ON N 39° 30' E.	ON BASE LINES, B, A, C,	
B A	1.280	L 180° 0'			1.42
R		L 260° 30'	R 99° 30'		
73	1.56 1.280	L 1° 17'		-12° 27'	1.42
At 73			0° 0' ON N 39° 30' E.		
B	1.560 1.280	R 181° 17'		+12° 30'	
74	1.700 1.145	R 3° 38'	N 43° 30' E	-32° 30'	
At 74					
73	555	0° 0' ON 73	N 43° 30' E	+32° 43'	
43	1.615 1.225	L 103° 37'		+7° 30'	1.42
43	1.615 1.225	L 103° 37'		+7° 19'	1.42
A 73		0° 0'			
Δ 265	1.508 1.332	R 64° 49'	N 72° 15' W	-7° 57'	1.42
At Δ 265			0° 0' ON 74		
Δ 74	1.508 1.332	0° 0'	S 72° 15' E	+7° 58'	1.42
Δ 267	1.794 1.041	L 130° 0'	N 22° 0' W	-13° 43'	1.42
Δ 266	1.685 1.155	L 127° 45'	N 19° 45' W	-16° 50'	1.42
At Δ 267			0° 0' ON 265		
A 265	1.795 1.045	0° 0'	S 22° 0' E	+13° 44'	1.42
A 266	1.532 1.31	L 40° 57'		+6° 23'	1.42
A 268	1.655 1.19	R 171° 21'	S 30° 30' W	-0° 25'	1.42
At 266					
265	1.685 1.155	0° 0'	S 19° 45' E	+16° 54'	1.42
269	1.69 1.15	R 97° 40'	S 78° 0' W	-30° 28'	1.42
268	1.765 1.075	R 170° 18'		-2° 22'	



(15)

π at $\Delta 269$		$0^{\circ}0'N 266$		
$\Delta 266$	1.69 1.15	$0^{\circ}0' N 78^{\circ}0' E$	$+3^{\circ}34'$	1.42
$\Delta 281$	1.68 1.16	R $91^{\circ}10' S 89^{\circ}W$	$+1^{\circ}33'$	1.42
276	1.67 1.18	R $152^{\circ}15'$	$+23^{\circ}53'$	1.42
274	1.63 1.21	R $131^{\circ}53'$	$+28^{\circ}25'$	1.42
275	60	R $131^{\circ}12'$	$+27^{\circ}22'$	1.42
272	20	R $117^{\circ}30'$	$+18^{\circ}15'$	1.42
271	1.575 1.361	R $87^{\circ}6'$	$+17^{\circ}15'$	1.42
270	1.405 1.325	R $68^{\circ}41'$	$+9^{\circ}15'$	1.42

π at $\Delta 268$		$0^{\circ}0'N 267$		
$\Delta 267$	1.655 1.17	$0^{\circ}0' S 30^{\circ}30' E$	$+0^{\circ}24'$	1.42
$\Delta 282$	1.795 1.045	R $107^{\circ}27' S 76^{\circ}30' W$	$-0^{\circ}45'$	1.42
$\Delta 283$	1.812 1.032	R $117^{\circ}04' N 31^{\circ}30' E$	$+1^{\circ}20'$	1.42
284	1.23 0.77	R $176^{\circ}44' N 27^{\circ}30' W$	$+4^{\circ}5'$	1.00

π at 282		$0^{\circ}0'N 268$		
$\Delta 268$	1.795 1.045	$0^{\circ}0'$	$+0^{\circ}46'$	1.42
$\Delta 285$	1.68 0.325	R $178^{\circ}30' S 75^{\circ}W$	$+1^{\circ}20'$	1.00
281	1.695 1.145	R $100^{\circ}57'$	$+1^{\circ}57'$	1.42

π at 285		$0^{\circ}0'N 282$		
$\Delta 282$	1.68 0.325	$0^{\circ}0'$	$-1^{\circ}20'$	1.00
$\Delta 286$	1.692 1.15	R $95^{\circ}53'$	$-3^{\circ}55'$	1.42
288	1.617 1.225	R $78^{\circ}17'$	$+0^{\circ}4'$	
287	1.59 1.25	R $78^{\circ}57'$	$+0^{\circ}2'$	
290	1.632 1.211	R $56^{\circ}10'$	$+0^{\circ}15'$	
289	1.615 1.235	R $53^{\circ}42'$	-	
296	1.603 1.237	R $69^{\circ}20'$	$+1^{\circ}56'$	1.42

296 highest point on mound.

1.42
1.12
30

365
42
~~115~~
55
11.0

575
42
15.5

291	1.482 1.358	R 88°14'	-1°30'	1.42
292	1.67 1.532	R 101°24'	-	1.6
293	1.465 1.375	R 128°32'	+0°45'	1.42
294	6.4	R 109°22'	-	-
at 286		0°0' on 285		
285	1.692 1.15	0°0' N.9°W	+3°55'	1.42
72	1.38	R 166°52' ^{32'} S 22°E	-4°10'	2.85
297	1.648 1.192	R 152°00'	-2°00'	1.42
298	2.60 2.24	R 166°40'	-10°50'	2.42
299	1.61 1.235	L 41°49'	-2°5'	1.42
300	1.67 1.17	L 115°30'	-22°0'	1.42

293 highest point on mound,

Mound left 7' add 7' to Right
Subt 7 from left,
at Set up on 286

352
285
69
138

18

Ata Δ 112					
Δ 90	1.712 1.128	0° 0'	N 26° 15' W	+ 5° 56'	1.42
Δ 113	1.652 1.188	R 165° 3'	S 41° E	+ 16'	1.42
Δ 27	1.671 1.169	R 108° 31'	S 82° 30' E	+ 12° 30'	1.42
Δ M.	1.812 1.022	L 42° 50'	N 69° W	+ 12° 50'	1.42
Δ E	1.258 0.982	L 89° 17'	N 75° 10' W	+ 8° 20'	1.42
E-3-8	1.516 1.320	L 106° 20'	S 47° 45' W	- 0° 52'	1.42
Ata Δ 113		0° 0' N 90			
Δ 90	1.94 0.90	0° 0'	N 32° 30' W	+ 3° 10'	1.42
Δ 112		L 8° 19'			
Δ 27	1.66 1.18	R 55° 41'	N 23° E	+ 13° 8'	1.42
Ata Δ 27		0° 0' N 113			
Δ 113	1.658 1.182	0° 0'	S 23° W	+ 13° 8'	1.42
Δ 112	1.67 1.17	R 59° 29'	N 82° 30' W	+ 12° 30'	1.42
27d	1.466 1.374	R 175° 16'	+ 9.44	+ 10° 50'	1.42
27e	1.475 1.365	L 176° 52'	+ 10.99	+ 5° 55'	1.42
27b	1.462 1.378	R 149° 25'	-	+ 16° 0'	1.42
27f	1.525 1.315	R 167° 31'	-	+ 20° 40'	1.42
27h	1.509 1.331	L 165° 41'	-	+ 20° 38'	1.42
27g		Can't get to 27g			
27a	1.54 1.30	R 163° 12'	-	+ 31° 37'	1.42
27c	1.446 1.38	L 160° 9'	-	+ 18° 30'	1.42

1516

1.324

19.2

19.3

19.3

84

3

8.7

164.63

108.31

56.32

55.41

8.19

11992

17960

12032

12032

59.28

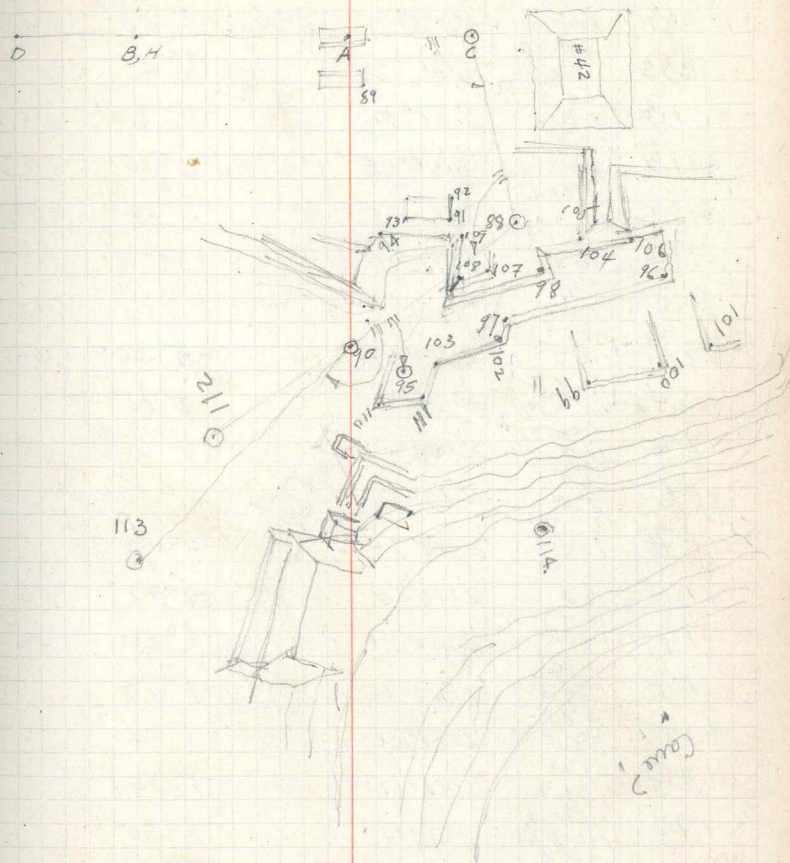
59.29

0.0

19

STATION	DIST	HOR. ANGLE	OBS. BEAR.	VERTICAL ANGLE	H.I.
At Δc					
BA	1.585				
	1.255	0°0'NA.	N28°30'E	+4°33'	1.42
1588	1.683	107.5'	N77°45'W	-1°43'	1.42
	1.16	28°30'			
89	1.568	L51°42'		-0°44'	1.42
	1.271				
At Δ88		0°0'NΔC			
use this ΔC	1.682				
	1.16	0°0'	N78°30'W	+2°0'-1'	1.42
90	1.788	L114°52'	N12°30'W	-7°24'	1.42
	1.050				
96	2.145	L226°25'		-3°50'	2.00
	1.853				
98	2.915	L217°12'		-3°40'	2.00
	1.905				
97	3.410	L166°30'		-2°40'	3.30
	3.190				
102	3.400	L160°57'		-5°0'	3.30
	3.150				
99	3.20	L194°10'		-3°20'	3.00
	2.80				
100	1.640	L214°5'		-2°35'	1.42
	1.855				
106	3.715	L235°50'		+3°0'	3.60
	3.465				
104	1.49	L233°18'		+4°5'	1.42
	1.35				
105	1.50	L245°32'		+10°0'	1.42
	1.34				
107	1.491	L160°36'		-2°30'	1.42
	1.35				
108	1.502	L140°8'		-1°45'	
	1.338				
109	1.485	L122°0'		-3°0'	
	1.355				
91	1.50	L75°40'		+2°0'	
	1.337				
92	1.51	L56°37'		+2°15'	
	1.33				
93	1.585	L75°40'		-3°0'	
	1.254				
94	1.640	L87°45'		-3°0'	1.42
	1.200				

LOWER PLAZA & EAST GROUP.



(20)

STATION	DIST	HOR. ANG	OBS. BEAR	VERT. ANG	H.I.
At A90		0°00'88"			
Δ88	1.795 1.000	0°0'	N12°30'W	+7°28'	1.42
Δ95	1.537 1.305	R31°		+8°4'	1.42
110	1.535 1.315	R82°30'		-2°20'	1.42
Δ113	1.90 1.90	R160°15'	N32°30'W	-3°10'	1.42
Δ112	1.711 1.13	R169°24'		-5°50'	1.42
114	.68	R76°0'	N62°30'E	+12°0'	.85
Δ88	1.795 1.05	0°0'		+7°27'	1.42
122	1.57 1.27	R119°57'		-5°30'	1.42
124	1.630 1.205	R128°35'		-5°45'	
126	1.652 1.19	R133°0'		-4°0'	
116	1.69 1.15	R138°35'		-5°10'	
117	1.658 1.185	R128°24'		-4°55'	
115	.62 1.07	R142°40'		-4°10'	1.00
119	1.27	R142°51'		-6°25'	1.42
118	1.582 1.208	R147°26'		-7°28'	
125	1.575 1.275	R137°30'		-5°55'	
127	1.53 1.313	R142°12'		-7°32'	
121	1.522 1.298	R130°15'		-5°30'	
120	1.52 1.32	R132°37'		-6°8'	
123	1.57 1.27	R104°39'		-2°13'	
At Δ95		0°00'90"			1.42
90	1.535 1.305	0°0'	N17°30'E	+7°56'	
103	1.53 1.31	R155°3'		+3°10'	1.42
102	1.542 1.253	R165°40'		+2°55'	

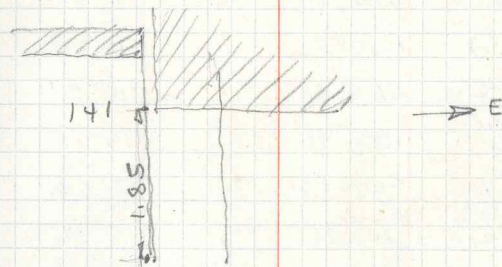
168.84
164.45

2°39'	
8°19'	179°60'
10°58'	10.58
4	169°2'
13.5	8
	165°2'
	165°3'

21

STATION	DIST.	HOR. ANG	OBS.	VERT ANG	H/I
At B95					
111	1.90 1.70	R225°43'		-3°0'	1.80
129	1.895	R204°30'		+30'	2.00
128	1.501 1.339	R211°48'		-0°30'	1.42
139	1.585 1.259	R46°10'		+15°5'	
135	1.602 1.242	R43°52'		+12°48'	
137	1.59 1.254	R53°43'		+17°32'	
136	1.57 1.285	R54°58'		+18°10'	
138	1.582 1.26	R61°23'		+16°40'	
130	1.58 1.26	R74°35'		+2°10'	
94	1.600 1.245	R83°55'		+8°6'	
132	1.493 1.347	R58°27'		+1°15'	
134	1.459 1.357	R74°53'		+4°40'	
133	1.48 1.36	R142°0'		+3°45'	
At A113		0°0'N A90			
A90	1.94 1.90	0°0'	N32°30'W	+3°10'	1.42
A112	1.652 1.188	L8°19'		-0°16'	1.42
139	1.515 1.325	R6°31'		-3°35'	1.42
144	1.644 1.496	R16°11'		+0°7'	1.42
140	1.794 1.606	R108°8'		-0°5'	1.70
142	1.645 1.195	R85°23'		+3°0'	1.42
141	33	R79°45'		+2°16'	2.42
143	3.170 2.83	R70°38'		+3°50'	3.60
149	1.733 1.113	R55°3'		+14°57'	1.42

2585'
242
165



Line 7 steps out foot of terrace
#42.
approx N66°0'W

(22)

STATION	DISTANCE	HOR ANG	OBS. BEAR	VERT ANG	H.I. 142
Max Δ113					142
148	3.33	R 48° 20'		+17° 10'	2.70
147	2.373 1.940 0.655	R 51° 20'		+18° 38'	1.00
145	70	R 42° 56'		+15° 42'	3.40
150	54.5	R 53° 4'		+14° 5'	1.42
151	1.74 11	R 55° 47'		+16° 10'	1.42
154	69.4	R 52° 17'		+17° 34'	3.14
153	3.710 300	R 60° 35'		+17° 38'	3.35
155	65	R 63° 45'		+16° 10'	1.6
152	172 112	R 63° 33'		+15° 49'	1.42
Δ 90	1.94 0.90	0° 0'	N 32° 30' W	+3° 11'	1.42
Δ 156	1798 1042	R 123° 15'	S 89° 30' E	+2° 19'	1.42
Δ 157	1812 0.99	R 206° 57'	S 5° 35' E	+8° 34'	1.42
Max Δ 157		0° 0' ON Δ 113			
Δ 113	1.852 9989	0° 0'	N 5° 35' W	-8° 35'	1.42
Δ 158	51 1.071	R 74° 22'		-3° 24'	1.42
Δ 161	1.732 1.11	R 122° 30'		+1° 35'	
Δ 159	1.751 1.09	R 91° 27'		-0° 13'	
Δ 160	1.998 0.952	R 174° 30'	S 0° 35' E	-2° 57'	1.42
Max Δ 158		0° 0' ON Δ 157			
Δ 157	51	0° 0'	N 68° 36' E	+3.25	1.42
162	1.55 1.29	R 68° 22'		+0° 30'	1.42
164	1.508 1.334	R 63° 50'		+1° 53'	
165	1.508 1.334	R 40° 2'		-2° 10'	
166	1.45 1.35	R 110° 15'		+3° 20'	1.40

147 highest point on pyramid
145 point most to front.

142	37.5	
115	34	
27	35	
374		1691
34		115
16		1675
1275	32.5	1165
32.5		510
65		
612		
1675		
1420		
255		
6088		

172	
142	
30	
12	60
30	
3	
142	
30	
8	1803

← see page (29)

← see page 32

← see page (29)

forward see page (54)

70	
19.65	
17.63	

(23)

STATION	DIST.	Horz ANG	Obs. Bear	VERT ANG	H.I.
at 158					
163	1.511 1.331	R 118° 18'		+3° 18'	1.42
168	1.542 1.298	R 122° 37'		+1° 8'	
167	1.463 1.337	R 130° 29'		+0° 10'	1.40
169	2.415 2.325	R 157° 18'		-4° 30'	2.42
171	2.499 2.341	R 160° 42'		-1° 15'	2.42
170	1.48 1.36	R 154° 40'		-2° 10'	1.42
173	1.469 1.371	R 172° 8'		+3° 47'	
172	1.491 1.349	R 178° 20'		-4° 35'	
199	1.526 1.270	R 102° 30'		+14° 43'	1.42
198	1.558 1.288	R 89° 41'		+12° 26'	"
197	1.552 1.283	R 86° 10'		+11° 24'	"
196	1.547 1.293	R 104° 1'		+3° 44'	1.42
188	1.524 1.316	L 6° 12'		-2° 32'	1.42
189	1.537 1.303	L 15° 8'		-2° 55'	
191	1.56 1.28	R 0° 59'		-1° 42'	
192	1.551 1.292	L 27° 3'		-3° 40'	
193	1.57 1.275	L 33° 17'		-3° 26'	
194	1.72 1.472	L 47° 34'		-3° 28'	1.60
185	1.55 1.29	L 68° 20'		-3° 50'	1.42
184	1.554 1.292	L 76° 22'		-3° 40'	
186	1.507 1.333	L 65° 45'		-3° 54'	
187	1.515 1.325	L 79° 24'		-3° 26'	
176	1.52 1.32	L 95° 42'		-3° 15'	
201	1.492 1.31	L 64° 0'		-2° 50'	
202	1.492 1.31	L 88° 15'		-2° 0'	

199 floor level on top of #25 bldg floor level

196 } corners of bldg approx
198 }

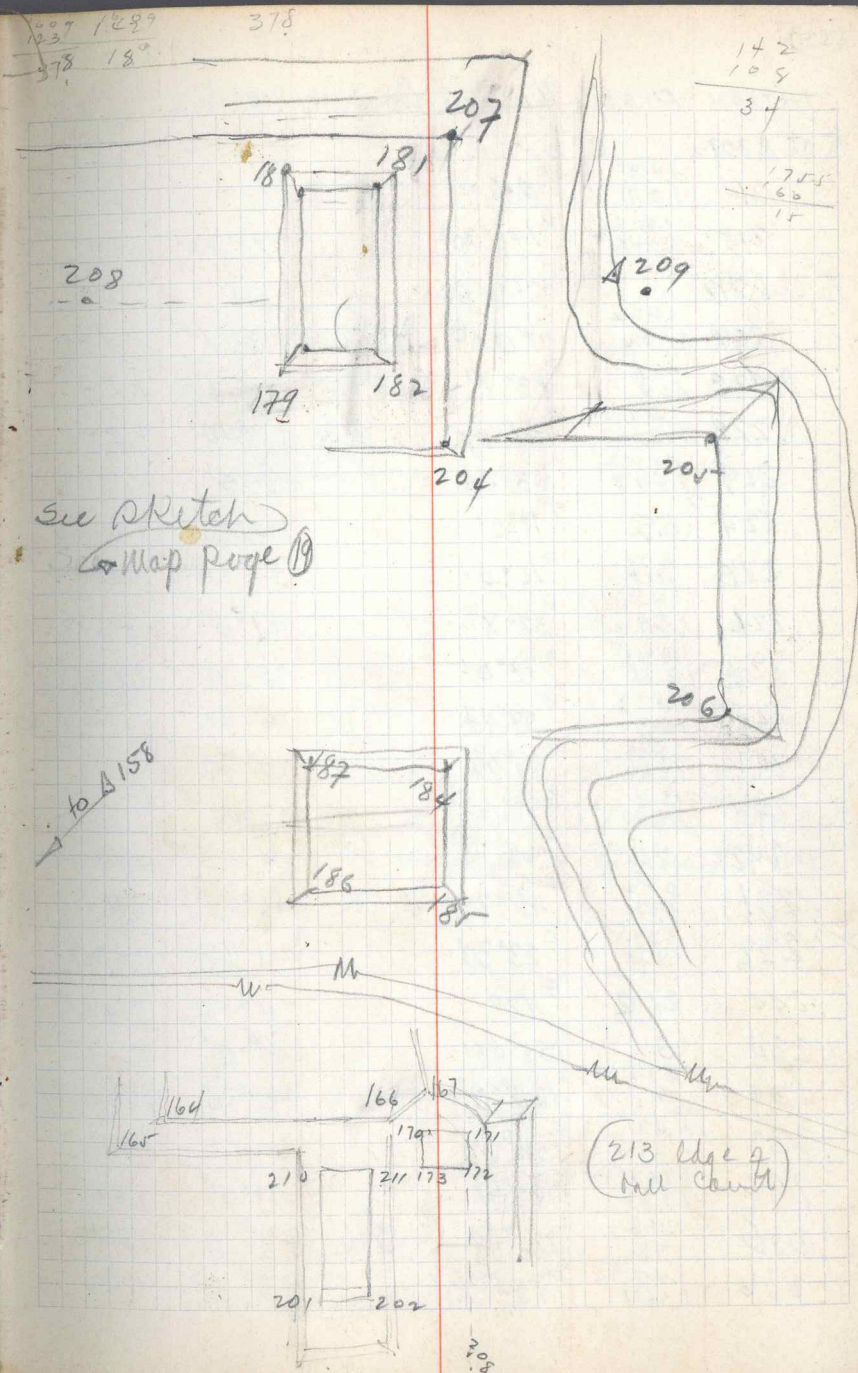
197 edge of terrace in front of bldg.

190 behind tree not shot

195 not shot Seems to be level,
only a terrace

(24)

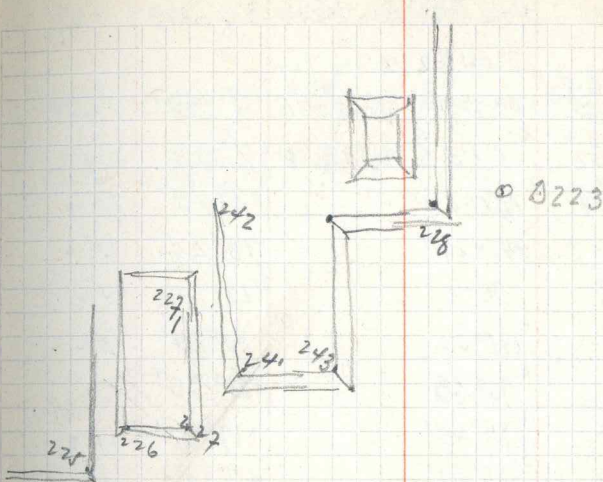
STATION	DIST	HOB ANG	Obs BEAR	VERT ANG	H.I.
T at Δ158					
182	1.565 1.275	94°45'		+2°36'	1.42
204	1.575 1.265	92°19'		+3°15'	1.42
206	1.595 1.245	80°23'		+4°0'	
205	1.605 1.235	90°50'		+3°10'	
207	2.263 2.22	120°18'		-2°0'	2.42
181	1.61 1.23	120°22'		-1°55'	1.42
180	0.89 0.55	126°15'		-3°45'	0.72
208	1.62 1.30	122°52'		-3°50'	1.42
179	1.54 1.30	102°24'		-2°25'	"
Δ 209	1.614 1.226	95°27'		-4°5'	1.42
210	2.7	R44°20'		-	-
211	3.2	R165°30'		-	-
174					
175					
T at Δ209					
Δ157	68 1.614	0°0'	N56°15'W	+5°0'	1.42
Δ158	1.226	49°21'	N7°0'W	+4°0'	1.42
Δ212	1.702 1.138	199°55'	N36°30'W	-12°55'	1.42
213	1.609 1.231	258°36'		-2°40'	1.42
220	1.544 1.299	R246°20'		-21°0'	1.42
221	1.545 1.295	R258°0'		-15°35'	1.42
217	1.522 1.268	R228°0'		-19°30'	"
216	1.754 31	R226°30'		-17°10'	1.60
218	1.590 1.245	R215°0'		-17°10'	1.42
219	0.925 0.475	R228°40'		-11°30'	0.70



(25)

STATION	DIST.	HOB. ANG	Obs. BEAR.	VERT ANG	H. I
at $\Delta 209$		0°	ON $\Delta 197$		
214	1.43 1.37		R 241°	-17°	1.40
215	1.455 1.345		R $196^\circ 30'$	$-9^\circ 30'$	1.40
at $\Delta 212$		0°	ON $\Delta 209$		
$\Delta 209$	1.702 1.138		$0^\circ 0'$	N $36^\circ 30' W + 13^\circ 4'$	1.42
$\Delta 223$	1.65 1.19		R $83^\circ 1'$	N $46^\circ 45' E + 53'$	1.42
$\Delta 222$	1.565 1.275		L $136^\circ 57'$	N $6^\circ 45' E + 9^\circ 40'$	1.42
219	1.552 1.288		L $53^\circ 45'$	$+9^\circ 5'$	
224	3.5		L $77^\circ 0'$	$+12^\circ 30'$	1.40
225	3.7		R $16^\circ 01'$	$+7^\circ 30'$	1.40
226	1.45 1.29		R $37^\circ 81'$	$+7^\circ 0'$	1.42
227	1.455 1.285		R $72^\circ 0'$	$+5^\circ 10'$	1.42
227 ₂	1.513 1.33		R $59^\circ 47'$	$+4^\circ 45'$	
241	1.500 1.320		R $67^\circ 35'$	$+3^\circ 30'$	
243	1.518 1.325		R $83^\circ 6'$	$+2^\circ 35'$	
242	24		R $60^\circ 45'$	$+4^\circ 15'$	1.75
231	0.92 0.68		R $45^\circ 25'$	$+8^\circ 0'$	0.70
232	1.565 1.278		R $23^\circ 30'$	$+11^\circ 25'$	1.42
244	21.2		R 112°	$-4^\circ - 0'$	1.42
234	3 1.471		L $151^\circ 45'$	$0^\circ 0'$	0
239	1.371		L $167^\circ 53'$	$+15^\circ 25'$	1.42
238	1.46 1.35		L $154^\circ 55'$	$+17^\circ 5'$	1.42
237	1.465 1.375		L $179^\circ 52'$	$+13^\circ 0'$	1.42
235	1.46 1.38		L $216^\circ 44'$ R $143^\circ 16'$	$+8^\circ 0'$	1.42
236	1.473 1.367		R $137^\circ 30'$	$+3^\circ 0'$	1.42

244 true elev.

$$\begin{array}{r} 1426 \\ 142 \\ \hline 106 \end{array}$$
 $\Delta 212$ \odot

at 239, a broken plain lentil
was found & turned over
by L.S.-

239 highest point of body structure

26

STATION	DIST	HOR ANG	Obs BEAR	VERT ANG	H.I.
At Δ222		0°0'N Δ212			
Δ212	1.565 1.275	0°0'	N 6°45'E	-9°30'	1.42
Δ250	0.559 0.251	157°33'	S 5°30'E	-7°33'	0.42
252	1.493 1.347	166°44'		+2°40'	1.42
258	1.535 1.305	142°27'		+18°24'	1.42
253	1.515 1.325	136°0'		+22°15'	1.42
254	1.50 1.34	111°0'		+30°10'	1.42
259	2.00 1.80	94°35'		+21°35'	1.90
260	1.532 1.31	84°45'		+17°35'	1.42
261	1.19 0.914	85°31'		+17°20'	1.05
255	1.484 1.356	109°10'		+30°20'	1.42
256	1.476 1.364	103°35'		28°38'	1.42
240v	1.49 1.35	15°20'		+9°0'	"
246	1.514 1.326	R 50°0'		-14°30'	1.42
242					
241v	1.47 1.37	R 22°21'		-15°05'	1.42
249	1.572 1.268	R 143°0'		-10°7'	1.42
248	1.558 1.285	R 141°53'		-12°20'	
266	0.76 0.443	R 153°0'		-9°20'	0.60
265	0.95 0.65	R 162°3'		-9°21'	0.80
248a	1.537 1.303	R 155°8'		-10°30'	1.42
257	1.525 1.315	L 166°30'		+1°20'	1.42
247	1.502 1.337	R 66°20'		-18°5'	"
247a	1.475 1.365	R 53°31'		-22°25'	"
245	1.50 1.34	R 24°8'		-9°30'	"
267	1.620 1.220	R 141°		-11°20'	"

258 head of Slavi Case.

254 E Corner of hedy on pyramid -?

259 West Corner of hedy -?

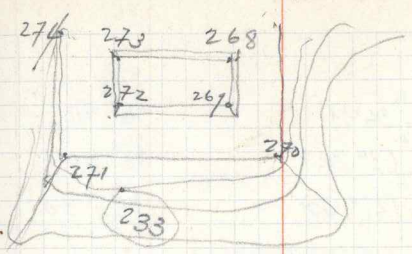
SEE page 60 for Δ323

$$\begin{array}{r} 300 \\ 190 \\ \hline 10 \end{array}$$

(27)

STATION	DIST.	HOR. ANG.	OBS. BEAR.	VERT. ANG.	H.I.
At Δ 222					
268	1.33	55° 40'		+4° 30'	1.41
269	1.61	49° 30'		+4° 45'	1.70
270	2.0	45° 39'		+2° 30'	2.00
273	1.36	51° 26'		+6° 00'	1.42
- 272	1.357	41° 10'		+6° 00'	1.42
271	1.362	26° 30'		+3° 00'	"
274	1.378	49° 30'		+6° 30'	"
233	1.365	18° 10'		+0° 30'	"
At Δ 250		0° 0' N 222			
Δ 222	0.252	0° 0'	N. 15° 30' W	+7° 6'	0.42
Δ 447	1.105	95° 29'	S 68° 45' W	+13° 5'	1.32
Δ 671	1.054	158° 8'	S 6° 5' W	-6° 50'	1.42
681	0.531	165° 28'		-7° 45'	0.72
672	1.270	R 172° 10'		-13° 00'	1.42
680	1.334	R 172° 30'		-16° 25'	"
264	1.338	164° 9'		-14° 5'	"
675	1.3607	123° 37'		-8° 00'	"
676	1.3875	120° 15'		-9° 35'	"
677	4.505	121° 35'			
677 _u	4.95	170° 6'			
678	6.60	177° 40'		-13° 25'	1.42
679	1.36	R 178° 21'		-11° 30'	"
267	1.33	R 113° 30'		-15° 00'	"
673	1.32	R 47° 00'		-11° 00'	"
672	1.251	R 46° 00'		-7° 35'	"

Δ 222.



677 SAME ELEV. AS 250

(28)

SEE PAGE 57 FOR A

At Δ 250

674.	1.570 1.270	R 36°14'	-6°45'	1.42
263c	1.53 1.31	L 62°22'	+8°50'	"
457w	1.641 1.199	L 121°30'	+21°30'	"

At Δ 671

0° ON 250

Δ 250	1.781 ✓ 1.059 ✓	0° 0' N 6° 5' E	+6° 50'	1.42 ✓
Δ 597	1.742 1.298	L 61° 52' N 56° W.	+21° 33'	1.52
Δ 682	1.62 1.22	R 177° 52' S 4° W	-2° 5'	1.42
683	1.518 1.322	L 141° 30'	+12° 10'	"
685	1.5415 1.2985	L 143° 10'	+11° 50'	"
505	1.615 1.225	L 104° 0'	+15° 35'	"
688	0.76 0.48	L 95° 0'	+16° 35'	0.62
690	1.581 1.259	L 77° 47'	+18° 50'	1.42
687	1.431 0.870	L 79° 7'	+26° 45'	1.15
689	1.531 1.309	L 74° 40'	+15° 0'	1.42
686	1.47 1.37	L 77° 22'	+5° 30'	"
684	1.4865 1.3535	L 160° 45'	+35'	"

At Δ 682

0° ON 671

Δ 671	1.62 1.22	0° 0' N 4° E	+2° 3'	1.42
Δ 691	1.4325 1.0175	R 92° 54' S 83° E	+7° 35'	1.22
Δ 548	1.694 1.143	L 145° 23' S 36° 30' W	+7° 6'	1.42
692	1.871 1.529	L 120° 45'	+13° 36'	1.70
693	1.5465 1.2935	L 127° 35'	+14° 10'	1.42
694	1.53 1.31	L 150° 20'	+1° 40'	1.42
? 695	0.23 0.81	R 167° 45'	-4° 40'	1.02

457w checks elevation of 457. AVERAGE both
687 & 492 SAME elev.
$$\frac{1.4}{6.2}$$

(29)

SEE page (22)

STATION	DIST	HOR ANG	Obs. BEAR	VERT ANG	H.L.
At D157		0° on 113			
✓ 301	1.46 1.37	40°38'		-7°43'	1.42
302	1.425 1.292	11°45'		-5°24'	
303	1.443 1.343	R 40°54'		-5°10'	
✓ 304	1.532 1.305	R 165°58'		-7°0'	1.42
✓ 305	1.535 1.305	R 158°4'		-12°30'	1.42
✓ 306	1.525 1.317	R 168°0'		-8°10'	
✓ 307	1.46 1.38	R 128°0'		-25°37'	1.42
308	1.439 1.401	L 140°7'		-15°35'	
✓ 309	1.535 1.305	R 167°40'		-7°15'	
✓ 310	1.53 1.31	R 175°40'		-6°45'	1.42
✓ 311	1.625 1.215	R 178°0'		-3°55'	
✓ 312	1.632 1.212	R 172°14'		-3°50'	
313	1.698 1.14	R 172°18'		-4°0'	
✓ 315	1.645 1.198	R 178°18'		-3°25'	
At D160		0° on 157			
Δ 157	1.98 0.952	0° 0'	N 35° W	+2° 55'	1.42
Δ 318	1.68 1.158	158° 2'	S 21° 30' W	-5° 57'	1.42
Δ 319	1.455 1.045	59° 3'	N 59° 0' W	+3° 57'	1.25
320	1.48 1.36	736° 45'		-6° 25'	1.42
321	1.523 1.27	136° 45'		-8° 45'	1.42
314	1.67 1.17	R 10° 15'		+2° 10'	"
316	1.554 1.286	R 12° 20'		+3° 25'	"
317	1.56 1.28	R 22° 00'		+3° 10'	"

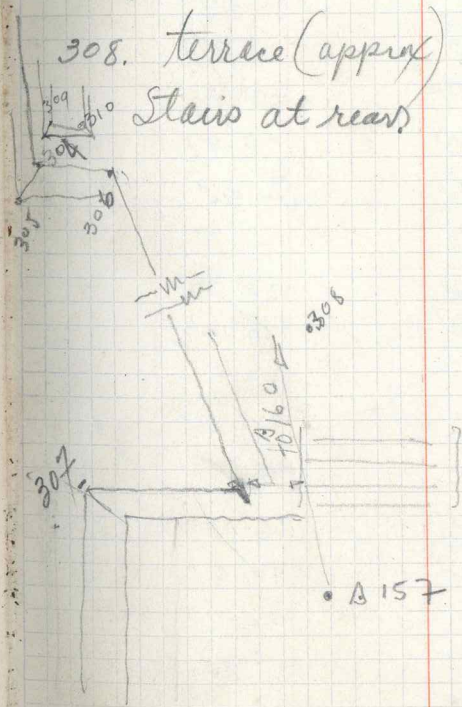
Mound of Round Columns

301 } Range poles that L.S. had
302 } stuck in at edges of structure for
Measurements.

303 N.E. Corner of Structure

307. bottom of Mound when trail goes
by.

308. terrace (approx) level back of
Stairs at rear.



309 cur?
parallel with
other side.

309, 310
Mound
1/2 meter high

1.98
21.30
18

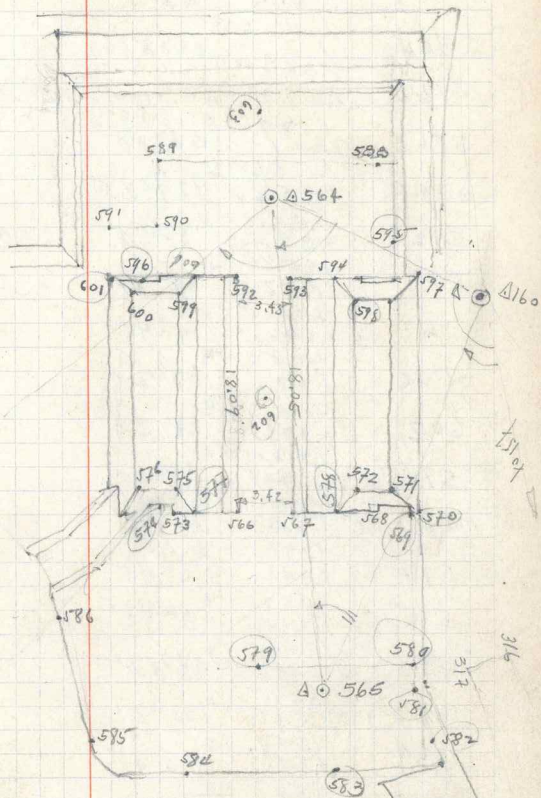
(30)

At 160	89.8	0°0'N 7'			
Δ 157	1.988	0°0'	110°25'W	+2°55'	1.72
Δ 319	1.455 1.045	259°3'		+3°57'	1.25
Δ 318	1.68 1.159	258°1'		-5°56'	1.42
Δ 564	1.547 1.293	R 140°15'		-4°26'	"
Δ 565	1.5995 1.2415	R 54°57'		-2°28'	"
At 565		0°0'N 160			
Δ 160	1.5995 1.2415	0°0'		+2°20'	"
Δ 564	1.631 1.211	236°53'		-0°39'	"
566	1.5065 1.3335	254°8'		-0°55'	"
577	1.5185 1.3215	264°53'		+0°47'	"
573	1.628 1.412	271°26'		-52'	1.52
574	1.534 1.306	273°33'		-51'	1.42
575	1.545 1.295	267°16'		+7°30'	1.72
576	1.551 1.289	271°38'		+7°15'	"
567	1.50 1.34	243°8'		-30'	"
548	1.499 1.341	229°5'		+1°38'	"
572	1.395 1.235	219°0'		+6°5'	1.30
571	1.400 1.200	209°27'		+6°15'	"
570	1.409 1.331	R 1°0'		+4°0'	1.42
569	1.506 1.334	22°50'		-42'	"
568	1.50 1.34	11°55'		-1°24'	"
582	1.492 1.348	R 74°6'		+2°33'	"
317	1.519 1.321	R 51°30'		+8°32'	"
581	1.466 1.373	R 43°45'		+3°55'	"
580	1.466 1.374	R 31°0'		-55'	"
584	1.487 1.3125	214°46'		-3°0'	"

574 - 78 CM from EAST CORNER
164 CM " point 573 direct.

571, 582
use elev of Δ 565

1.50
42
8.6
16.17.2
16.30



584, 579 points on line of
stones in ends of cover.

282 is 2.5 M from edge of wall, in line with 583

(31)

at 565		0° 6' N 160			
585	1.524 1.315	L 123° 22'		-1° 30'	1.42
586	1.535 1.305	L 105° 11'		-1° 0'	"
579	6.12	L 66° 7'			
at 564		0° 0' N 160			
ok 560	1.547 1.293	0° 0' N 40° 30' W		+4° 5'	1.42
ok 565	1.629 1.211	R 57° 50'		+30'	1.42
ok 587	1.586 1.254	R 129° 33'		+18'	1.42
592	1.46 1.38	R 87° 4'	+ 8.22	-10'	"
593	1.458 1.382	R 62° 27'	+ 7.81	-20'	"
567	1.5505 1.2905	R 61° 45'		+30'	"
566	1.5485 1.292	R 69° 21'		+15'	"
602	1.5025 1.3385	R 67° 53'		+20'	"
594	1.465 1.3745	R 33° 51'		+5° 8'	"
598	1.4945 1.3455	R 28° 24'		+14° 10'	"
597	1.499 1.341	R 6° 45'		+6° 25'	"
595	1.4825 1.3575	L 3° 42'		+0° 5'	"
588	1.4625 1.3775	L 43° 12'		-1° 5'	"
603	1.4585 1.3815	L 32° 2'		+1° 55'	"
589	1.500 1.340	R 168° 11'		0° 0'	"
590	1.500 1.340	R 136° 7'	+1618	—	"
591	1.511 1.3299	R 137° 48'		0° 0'	"
601	1.511 1.329	R 131° 9'	+1822	0° 0'	"
596	1.489 1.351	R 122° 29'	+1414	0° 0'	"
599	1.4945 1.3455	R 109° 25'		+11° 45'	"
600	1.51 1.33	R 116° 45'		+10° 5'	"
604	1.471 1.37	R 108° 21'		+5° 30'	"

139.10	138.10	137.10
54.7	54.0	53.4
122.10	121.10	120.10
121.10	120.10	119.10
118.10	117.10	116.10
115.10	114.10	113.10
110.75	109.60	108.45
54.57	53.42	52.27
85.18	83.03	80.88
36.53	34.38	32.23
121.76	120.61	119.46
1220.11	1209.06	1197.91
1.64	1.562	1.484

CONTINUED ON page 59.

1.42
4.55
2
7.10
30
9.40
6
4

(32)

STATION	DIST.	HOR ANG	OBS BEAR	VERT ANG	H.I.
At Δ 161		0° 0' 15"			
4157	1732 1.1	0° 0'	N 51° 40' E	-1° 35'	1.42
Δ 159	2.173 1.824	80° 41'	N 29° 00' W	-2° 25'	2.00
329	1.47 1.37	R 137° 12'		+4° 10'	1.42
368	1.52 1.32	R 107° 35'		+4° 20'	
330	1.512 1.33	R 105° 10'		+4° 17'	
322	1.928 1.673	R 103° 30'		+1° 14'	1.8
333	1.55 1.29	R 94° 15'		+3° 30'	2.42
331	1.522 1.318	R 94° 35'		+3° 45'	1.42
334	1.45 1.385	R 34° 0'		+12° 25'	1.42
335	1.478 1.362	R 37° 30'		+6° 55'	1.42
340	1.447 1.393	L 8° 21'	Same level 322		1.42
339	1.452 1.388	L 33° 01'		-12° 51'	1.42
325	1.552 1.29	R 155° 03'		+27° 15'	1.42
326	1.585 1.26	R 149° 51'		+27° 43'	1.42
327	1.575 1.27	R 143° 51'		+25° 40'	1.42
341	3.9	L 139° 35'		+5° 25'	
342	1.457 1.383	L 171° 18'		+1° 40'	
373	1.465 1.378	L 159° 21'		+4° 15'	
372	1.458 1.382	L 142° 00'		+5° 20'	
374	1.495 1.348	L 143° 10'		+1° 40'	
371	1.492 1.348	L 130° 25'		+2° 45'	
344	1.512 1.328	L 146° 35'		-0° 55'	
343	1.502 1.338	L 115° 45'		-2° 25'	
366	1.518 1.322	L 111° 20'		-1° 30'	

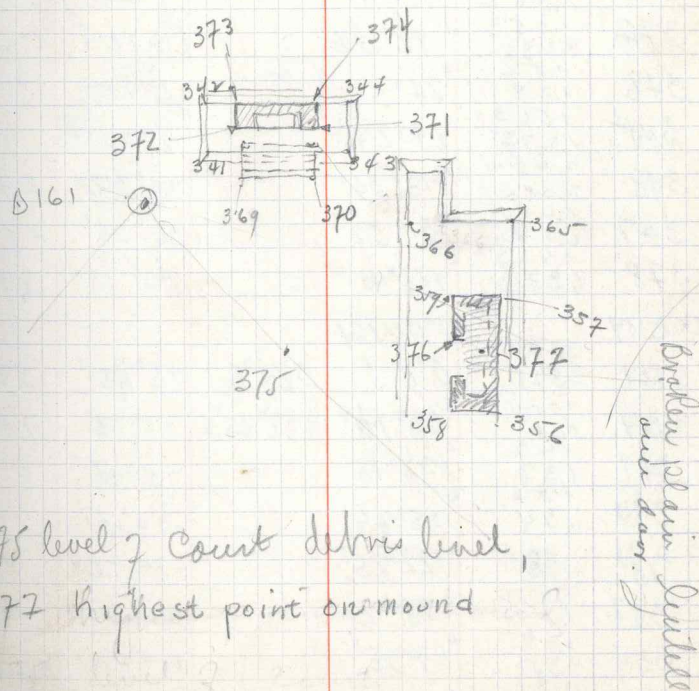
SEE page (22)

368 in St line from mound to pyramid,
with 331 + 335

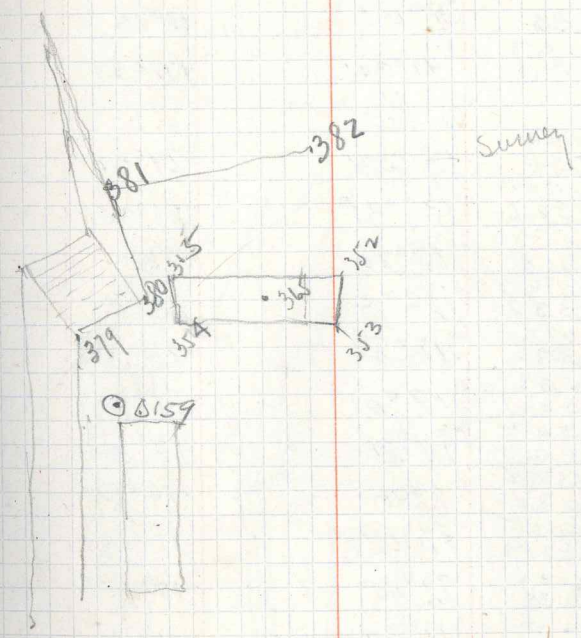
New level of terrace below 329

326 highest point on pyramid

343 same level as 344 use 344

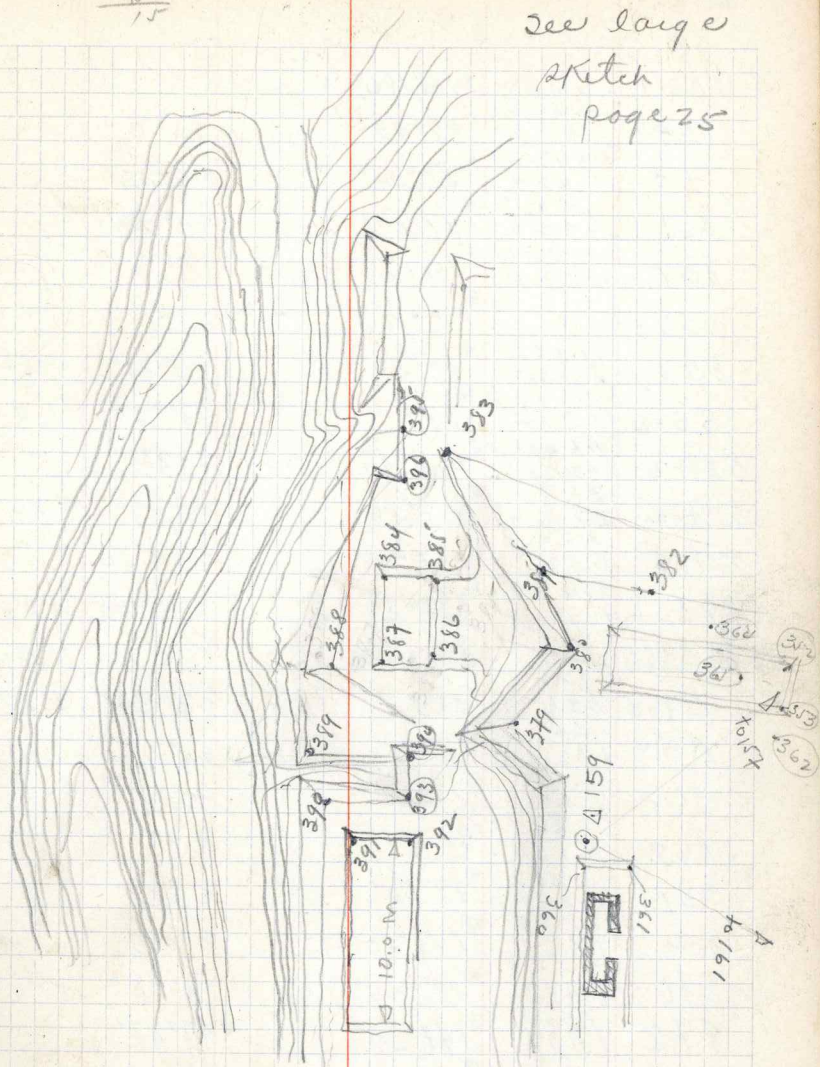
375 level of Court debris level,
377 highest point on mound

At Δ161				
365	1.56 1.28	∠112°20'	-0°30'	1.42
356	1.58 1.265	∠90°45'	0°0'	1.42
358	1.56 1.285	∠87°11'	+0°10'	"
376	1.546 1.294	∠92°58'	-2°31'	"
357	1.565 1.275	∠102°08'	0°00'	"
359	1.542 1.298	∠100°00'	+0°30'	"
370	1.485 1.315	∠106°15'	-5°13'	"
369	1.462 1.378	∠91°25'	-8°01'	"
375	1.478 1.362	∠83°40'	-7°35'	"
377	1.552 1.288	∠92°52'	+1°101'	"
346	1.56 1.28	∠24°35'	-2°25'	"
345	1.563 1.277	∠19°27'	-2°25'	"
348	2.484 2.354	R13°36'	+6°35'	2.42
347	1.695 2.545	R21°52'	+0°28'	2.62
378	1.467 1.373	∠172°45'	+0°15'	1.42
At Δ159				
Δ161	3.175 2.825	0°0' N161	529°E +5°45'	3.00
Δ157	1.751 1.09	∠68°12'	N82°45'E +0°13'	1.42
379	1.47 1.37	∠132°18'	-4°45'	1.42
380	1.501 1.34	∠108°26'	-2°10'	"
381	1.8	∠122°15'	-3°0'	"
382	1.57 1.275	∠98°20'	-1°30'	"
354	1.49 1.35	∠93°35'	+1°20'	"
355	1.81 1.63	∠104°01'	+2°0'	1.72



(34)

STATION	DIST	HOR. ANG	Obs BEAR.	VERT ANG	H.L.
At A 159		0° 0' N 157			
0157	1.751	0° 0'	N 82° 40' E	+0° 14'	1.42
0161	1.09	0° 0'	S 52° 0' E	+5° 49'	3.00
353	3.175 2.825	68° 11'		0° 0'	1.42
365	1.65 1.275	400'		+1° 35'	1.42
352	1.558 1.282	0° 25'		+1° 15'	2.00
361	30	900'		+11° 0'	1.42
360	1.458 1.387	42° 30'		-29° 30'	"
392	1.49 1.35	135° 30'		-21° 45'	"
393	1.51 1.326	137° 35'		-23° 0'	"
390	1.29 1.311	132° 20'		-28° 0'	"
393	1.503 1.337	127° 5'		-27° 35'	"
394	1.515 1.33	117° 0'		-26° 30'	"
389	1.536 1.304	117° 0'		-17° 50'	"
388	1.545 1.295	94° 20'		-16° 55'	"
387	1.552 1.287	82° 00'		-12° 45'	"
384	1.565 1.275	79° 0'		-10° 45'	"
396	1.602 1.238	72° 45'		-10° 10'	"
383, 395	1.62 1.22	72° 30'		-12° 25'	"
385	1.56 1.28	71° 20'		-14° 22'	"
386	1.54 1.30	72° 55'		+6° 45'	"
362	1.512 1.328	5° 35'			
At A 319		0° 0' N 160			1.47
A 160	1.672 1.268	0° 0'	S 59° 0' E	-3° 6'	1.47
A 860	1.600 1.320	86° 20'	N 34° 30' E	-1° 21'	"

200
185
15see large
sketch
page 25

(35)

At A 319		0°W 160'		1.47
864	1.510 1.430	97°45'	+1°0'	
863	1.429	135°30'	+12°45'	
861	1.420	R 101°15'	+0°20'	
859	1.556 1.394	R 106°0'	0°0'	
858	-	R 115°10'	-	-
855	1.805 1.531 1.613	R 84°50'	-5°25'	1.67
855-a	1.327	R 67°	-9°0'	1.47
328-b	1.628 1.312	R 157°45'	+32°	"
327-a	2.66 2.28	R 157°50'	+32°	2.47
328-a	1.62 1.32	R 165°15'	+34°20'	1.47
328	1.62 1.32	R 177°8'	+35°50'	1.47
At A 860		0°0N 160'	-	1.50
A 160	1.74 1.26	0°0' S 23°N'E	-2°50'	1.50
A 319	1.64 1.36	R 57°45' S 34°30'W	+1°26'	1.50
867	1.565 1.435	R 77°30'	+6°	"
869	1.66 1.44	R 88°5'	+9°	
351	1.542 1.458	R 73°50'	+1°22'	
350	1.539 1.461	R 126°50'	+3°15'	
870	1.557 1.443	R 132°55'	+10°20'	
872	1.563 1.437	R 147°20'	+7°47'	
873	1.575 1.425	R 143°10'	+9°35'	
871	1.361 1.239	R 153°0'	+2°55'	1.30
337	1.39 1.21	R 162°10'	+3°10'	1.30

FOR ELEV of 337 USE 860

30

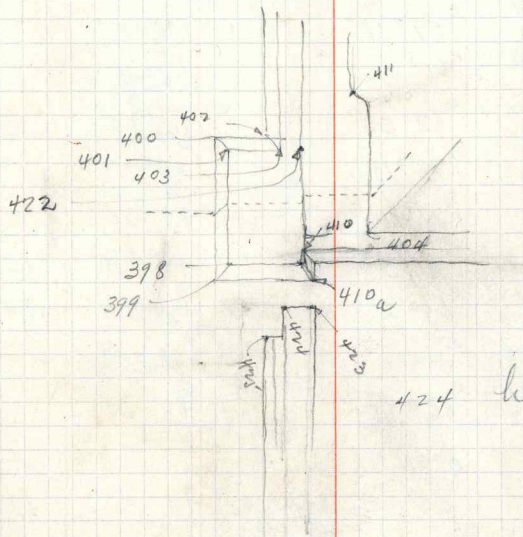
At 318		0° 0' N 160		H.I. = 1.42	
160	1.68 1.159	0° 0'	N 21° 30' E	+5° 48'	1.42
322	1.352 0.65	R 103° 3'	S 55° 20' E	+1° 35'	1.00
323	1.31 0.695	R 156° 5'	S 2° E	+1° 37'	1.00
407	1.600 1.238	L 126° 20'		+21° 0'	1.42
406	1.19 1.21	L 133° 12'		+23°	1.42
408	1.605 1.235	L 135° 8'		+23° 7'	1.42
405	1.573 1.267	L 135° 50'		+23° 0'	1.42
160	1.68 1.154	0° 0'	N 21° 30' E	+5° 47'	1.42
322	1.352 0.65	R 103° 3'	S 55° 10' E	+1° 35'	1.00
323	1.31 0.695	R 156° 5'	S 2° E	+1° 37'	1.00
421	1.68 1.16	L 90° 40'	N 69° W	-1° 42'	1.42
420	1.61 1.23	L 150° 57'		+17° 30'	1.42
411	1.528 1.322	L 159° 51'		+8° 17'	"
422	1.515 1.325	L 168° 20'		+6° 30'	"
403	1.511 1.329	L 171° 30'		+4° 55'	"
404	1.592 1.348	L 130° 47'		+10° 6'	"
400	1.512 1.328	R 174° 18'		+0° 15'	"
399	1.45 1.39	R 170° 26'		+0° 40'	"
398	1.46 1.38	L 171° 15'		+8° 5'	"
410	1.472 1.37	L 143° 50'		+9° 57'	"
410a	1.46 1.38	L 130° 49'		-25'	"
423	1.456 1.384	L 128° 33'		+3° 48'	"
424	1.449 1.391	L 142° 33'		+5° 50'	"
425	1.4425 1.3975	L 157° 50'		-0° 55'	"

408 highest point on hldg on Pyramid

PYRIMID NO 6. MY MAP.

SEE SK. MAP. EN. P. 36

Detail of corner of lower terrace



424 height of MOOND

SEE PAGE 52.

1600

1.42

18

34

1492

142

172

142

348

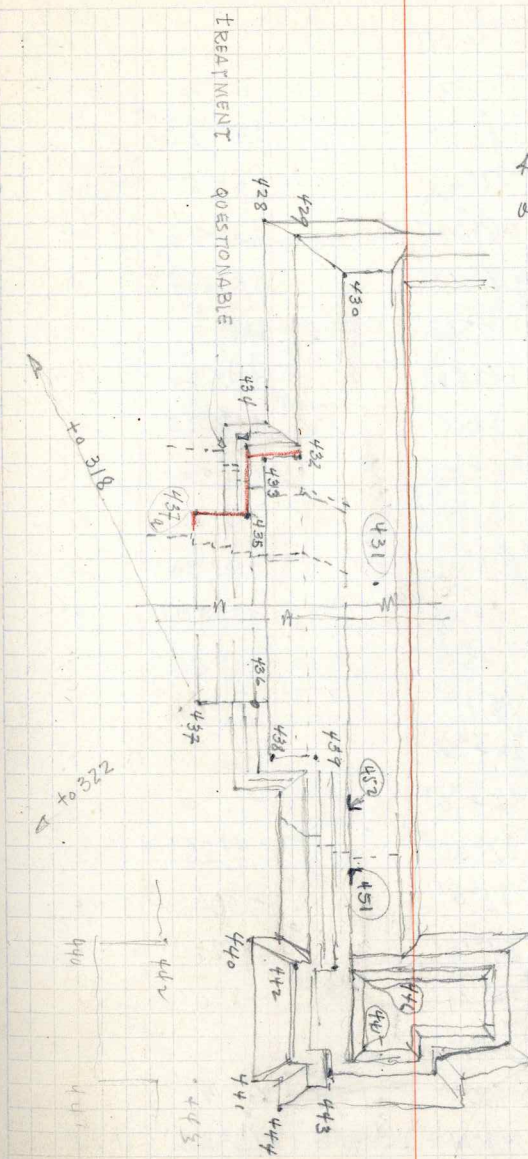
7.8

186

(37)

STATION	DIST	Horz ANG	Obs BEAR	VERT ANG	H.I.
At Δ 318		0° 0' N 160			
426	1.488 1.352	L 10° 49'		+1° 40'	1.42
427	1.495 1.345	L 14° 52'	49	+2° 30'	1.42
430	1.540 1.300	R 27° 39'		+11° 20'	
429	1.515 1.325	R 25° 8'		+5° 48'	
428	1.509 1.331	R 24° 28'		+2° 18'	
432	1.56 1.28	R 54° 10'		+3° 5'	
433	1.547 1.283	R 59° 11'		+3° 10'	
434	1.552 1.288	R 61° 42'		+2° 0'	
435	1.560 1.280	R 62° 55'		+2° 30'	
437	1.615 1.235	R 75° 15'		+0° 15'	
436	1.62 1.22	R 71° 35'		+1° 32'	
438	43.6 1.640	R 71° 3'		+1° 30'	1.52
439	1.200 1.627	R 68° 7'		+2° 55'	1.42
431	1.213 1.535	R 53° 0'		+7° 50'	"
437a	1.261 1.535	R 66° 47'		+0° 31'	"
At Δ 322		0° 0' N 318			1.45
Δ 318	1.352 0.65	L 0° 0'	N 55° 20' W	-2° 5'	1.00
Δ 323	1.295 0.705	L 55° 30'	S 69° 30' W	-0° 20'	1.00
Δ 448	1.618 1.222	L 94° 22'	S 30° 30' W	-4° 20'	1.45
Δ 397	1.506 1.334	R 175° 30'	S 60° E	-8° 20'	"
Δ 447	1.574 1.266	R 87° 16'	N 32° E	+1° 0'	"
441	1.571 1.27	R 63° 39'		-2° 50'	"
440	1.589 1.251	R 46° 22'		-2° 50'	"
437	1.628 1.212	R 30° 3'		-1° 25'	"

1738
112
218
43.6



431. highest point
on top level.

451 + 452
corners of
piers

make larger
scale dr for
this

see page 39
this book

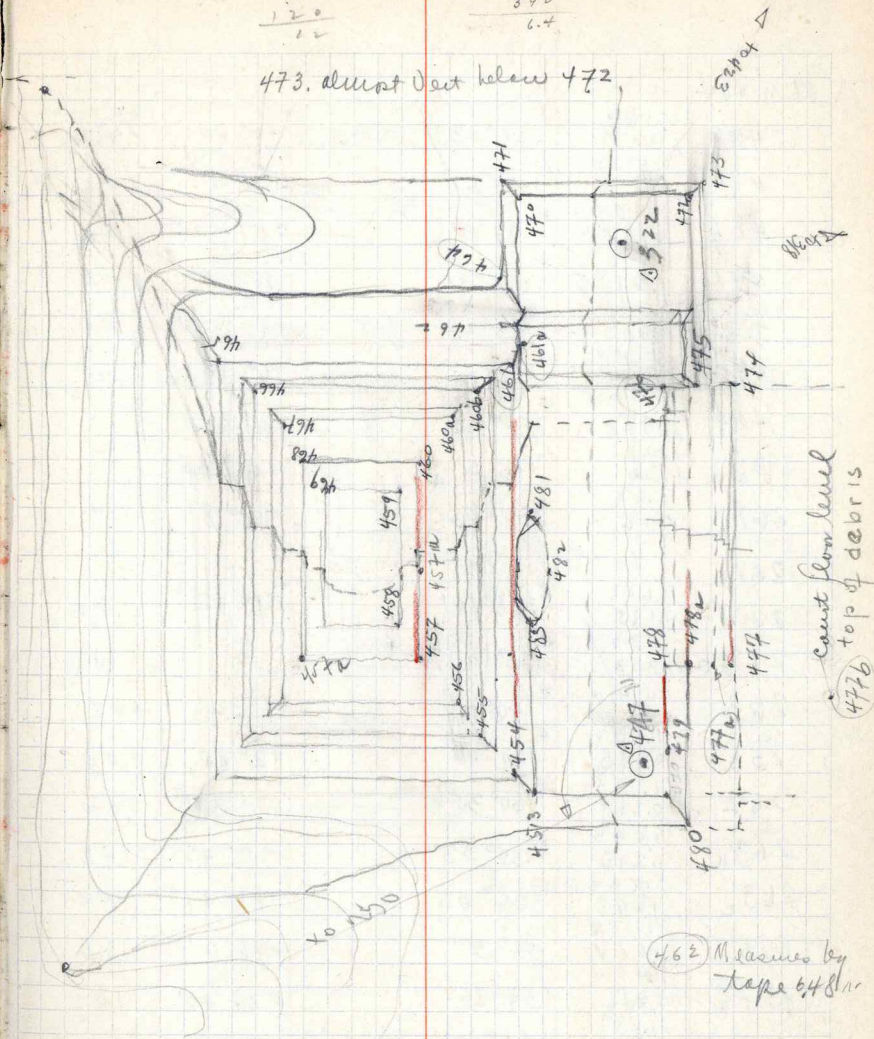
(38)

Obs BEAR.

At $\Delta 322$		$0^{\circ} 0' N 318$		
451	1.635 1.205	R $44^{\circ} 52'$	$+3^{\circ} 5'$	1.42
446	44	R $52^{\circ} 6'$	$+5^{\circ} 20'$	"
442	1.615 1.225	R $51^{\circ} 45'$	$+3^{\circ} 5'$	"
445	1.624 1.216	R $66^{\circ} 25'$	$+5^{\circ} 25'$	"
443	1.64 1.23	R $64^{\circ} 28'$	$+4^{\circ} 20'$	"
459	1.538 1.302	R $125^{\circ} 43'$	$+19^{\circ} 0'$	"
460	1.52 1.32	R $124^{\circ} 53'$	$+18^{\circ} 30'$	"
460N	1.498 1.342	R $133^{\circ} 0'$	$+17^{\circ} 35'$	"
469	1.542 1.298	R $135^{\circ} 35'$	$+15^{\circ} 0'$	"
460b	1.485 1.355	R $132^{\circ} 40'$	$+14^{\circ} 15'$	"
461	1.472 1.368	R $131^{\circ} 20'$	$+10^{\circ} 30'$	"
461a	1.456 1.384	R $130^{\circ} 0'$	$+3^{\circ} 50'$	"
462	1.454 1.390	R $139^{\circ} 5'$	$-0^{\circ} 50'$	"
464	6.7	R 157°	$-9^{\circ} 0'$	"
470	4.9	L $167^{\circ} 30'$	"	"
471	6.2	L $167^{\circ} 0'$	$-11^{\circ} 0'$	"
472.	5.45	L $32^{\circ} 35'$	$-9^{\circ} 26'$	"
476	1.478 1.364	R $72^{\circ} 0'$	$-30'$	"
475	1.482 1.317	R $59^{\circ} 15'$	$-4^{\circ} 25'$	"
474	1.4905 1.361	R $52^{\circ} 35'$	$-8^{\circ} 0'$	"
At $\Delta 447$		$0^{\circ} 0' N 322$		
A 322	1.574 1.266	$0^{\circ} 0'$ S $32^{\circ} W$	$-0^{\circ} 48'$	"
B 250	1.535 1.405	L $143^{\circ} 14'$ N $68^{\circ} 45' E$	$-13^{\circ} 35'$	1.32
490	1.523 1.317	R $152^{\circ} 10'$	$-3^{\circ} 12'$	1.42

1.42
1.20
1.24.42
3.90
6.4

473. almost Vest below 472.



TEMPLE NO 7 MY MAP.

481, 2, 3 may be steps, QUESTIONABLE
457 lower part on terrace below

(39)

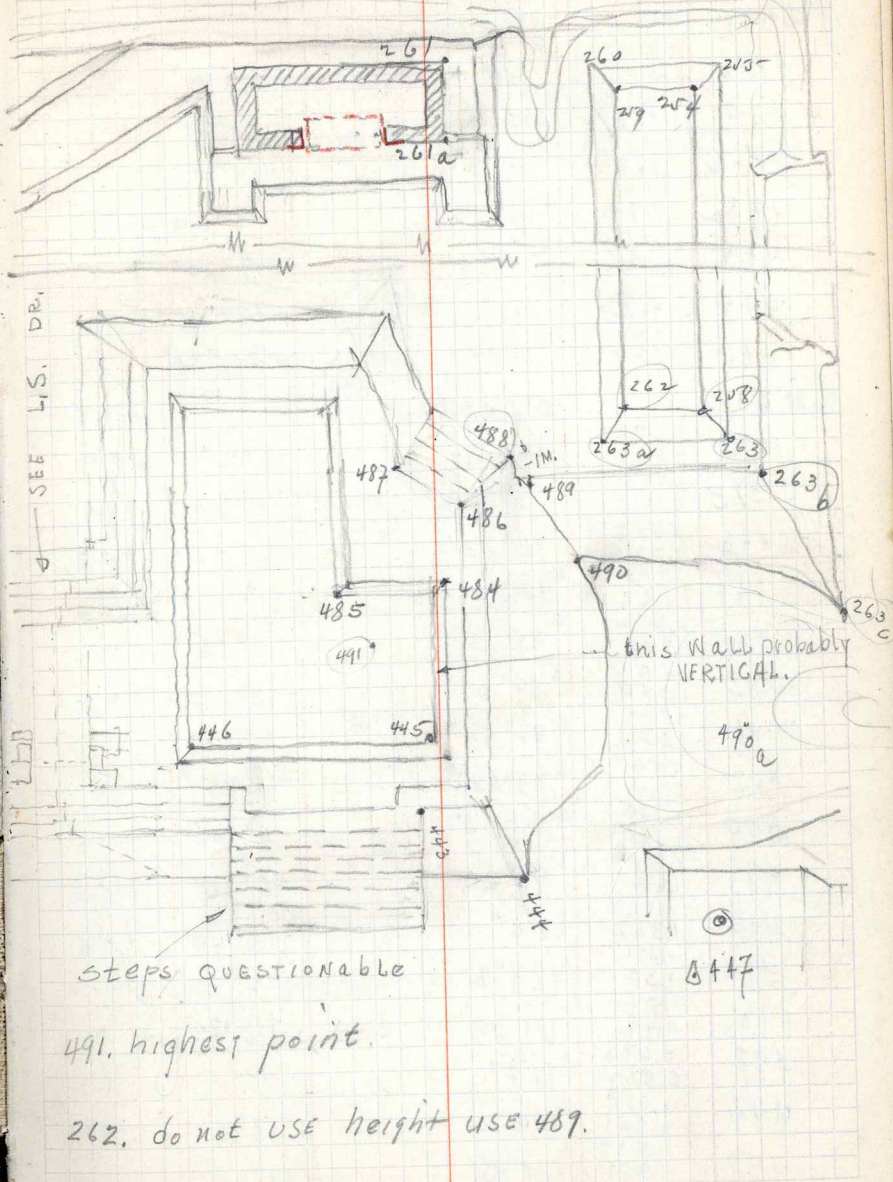
At 447

488	1.539 1.301	R 148°33'	+6°40'	1.42
486	1.535 1.305	R 140°51'	+5°5.1'	1.42
484	1.097 0.903	R 134°55'	+5°42'	1.00
491	1.572 1.3185	R 122°35'	+11°18'	1.42
485	1.535 1.305	R 123°20'	+9°23'	"
487	1.549 1.291	R 136°0'	+6°10'	"
444	1.565 1.375	R 117°23'	-11°35'	"
490a	1.48 1.36	R 176°5'	-25°30'	"
261	1.68 1.16	152°20'	+2°8'	"
261a	Cont See from 447			
254	1.648 1.195	R 168°10'	+1°45'	1.42
263b	1.534 1.308	R 173°10'	-	1.42
263	1.540 1.300	R 170°0'	-1°30'	1.42
258	1.132 0.868	R 165°40'	+2°25'	1.00
262	1.133 0.867	R 160°35'	+2°35'	1.00
263a	1.545 1.295	R 155°53'	+0°45'	1.42
263c	1.542 1.298	R 166°0'	-17°47'	1.42
458	1.129 1.494	L 58°5'	+24°0'	1.10
457a	1.346 1.467	L 54°25'	+24°40'	1.42
457	1.353 1.474	L 66°40'	+25°10'	"
456	1.366 1.443	L 80°25'	+29°56'	"
455	1.397	L 93°50'	+13°30'	0.42
453	2.70	R 130°50'	-	1.42

SK. MAP. P.N.P 36

DETAIL DR.

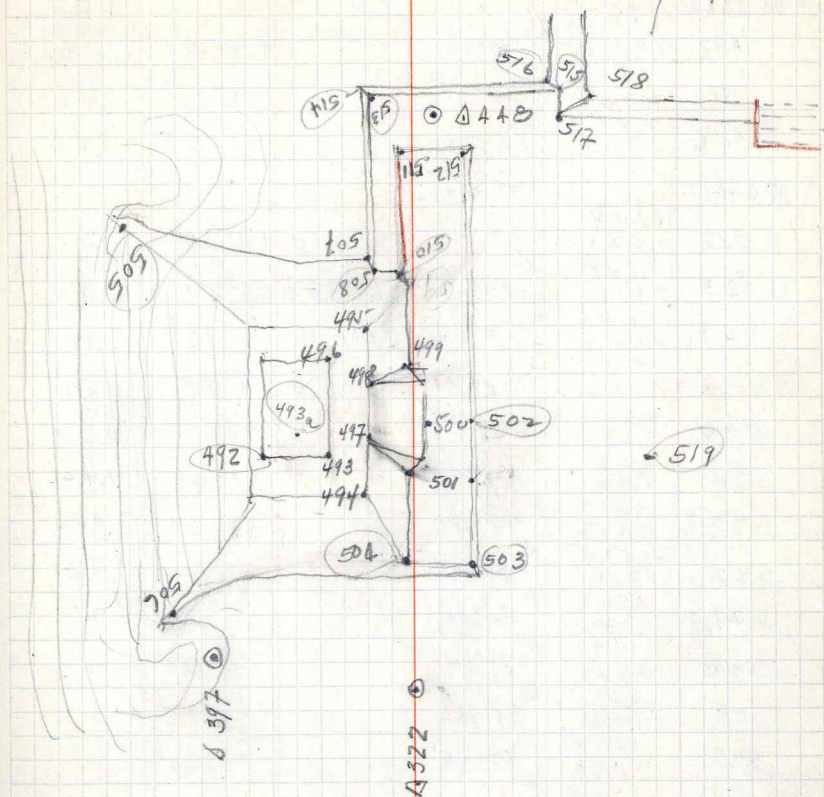
SOUTHEAST ENDS of BALL COURT.



(40)

At 447,		0° 0N 322		
477b	1.50 1.34	R 57° 0'	-10° 25'	1.42
477	1.472 1.368	R 53° 5'	-13° 55'	
477a	1.467 1.373	R 50° 10'	-14° 0'	
478a	1.461 1.379	R 41° 50'	-13° 20'	
478	1.454 1.386	R 29° 0'	-9° 20'	
479	4.45 1.451	R 50°	-12° 0'	
480	1.39	R 123°	-26° 30'	
At Δ 322		0° 0N 318		1.42
Δ 318	1.352 0.650	0° 0'	-2° 5'	1.00
Δ 323	1.295 0.705	55° 30'	-0° 20'	1.00
Δ 448	1.618 1.222	94° 22'	-4° 20'	1.42
Δ 447	1.574 1.266	R 87° 16'	+1° 0'	1.42
504	1.446 1.394	L 95° 15'	-7° 35'	"
503	1.456 1.384	L 59° 0'	-12° 15'	"
501	1.47 1.37	L 97° 55'	-5° 42'	"
502	1.50 1.34	L 83° 42'	-6° 45'	"
500	1.495 1.345	L 89° 30'	-4° 16'	"
499	1.81 1.63	L 99° 20'	+0° 20'	1.72
495	1.518 1.322	L 116°	+12° 40'	1.42
496	1.51 1.33	L 123° 25'	+16° 20'	"
498	1.08 0.92	L 111° 30'	+12° 30'	1.00
497	0.688 0.552	L 117°	-	0.62
494	1.059 0.941	L 124° 30'	+18° 0'	1.00
493	1.489 1.351	L 129° 45'	+21° 0'	1.42
493a	1.502 1.338	L 132° 0'	+22° 15'	

PYRIMID NO 8, MYMAP. F.N. P. 36.

PYRIMID PROBABLY WAS TERRACED - 3 terraces
badly fallen

493a high point on No 8, — correction on numbers
519 plaza level on top of debris

41

STATION	DIST	HOE ANG	OBS BEAR	VERT ANG	H.I.
at Δ322	1.5015	L			
492.	1.3395	L	140°10'	+20°40'	1.42
	1.494				
519	1.346	L	50°	-9°21'	1.42
	1.514				
506	1.336	L	173°35'	-7°5'	1.42
at Δ448					
	1.619		0°0'N322		
Δ322	1.221		0°0'	N30°30'E +4°20'	"
	2.189				
Δ323	1.811	L	100°5'	N69°35'W +5°24'	2.00
	1.546				
Δ449	1.093	L	179°17'	S31°W -3°18'	1.32
	1.585				
Δ450	1.255	R	152°6'	S2°30'W -4°45'	1.42
	0.697				
525	0.503	R	116°56'	+48'	0.60
	1.52				
524	1.32	R	109°45'	+2°01'	1.42
	0.517				
523	0.253	R	99°41'	+20°01'	0.40
	1.534				
522.	1.306	R	89°19'	+3°01'	1.42
	1.508				
521	1.332	R	84°45'	+45'	"
	1.499				
520	1.342	R	79°19'	-5°30'	"
	1.595				
509	1.245	R	67°16'	-9°12'	"
	1.574				
505	1.266	R	62°48'	-8°30'	"
	1.484				
507	1.356	R	34°52'	-3°40'	"
	1.489				
508	1.352	R	24°14'	+20'	"
	1.491				
510	1.349	R	12°45'	+3°49'	"
	1.45				
512	1.39	L	2°58'	+3°18'	"
	1.456				
511	1.384	R	37°50'	-1°25'	"
	1.456				
513	1.384	R	100°38'	-5°20'	"
	1.468				
514	1.372	R	111°35'	-8°10'	"
	1.495				
527	1.345	R	116°01'	-6°5'	"
	1.503				
526	1.337	R	118°01'	-1°45'	"

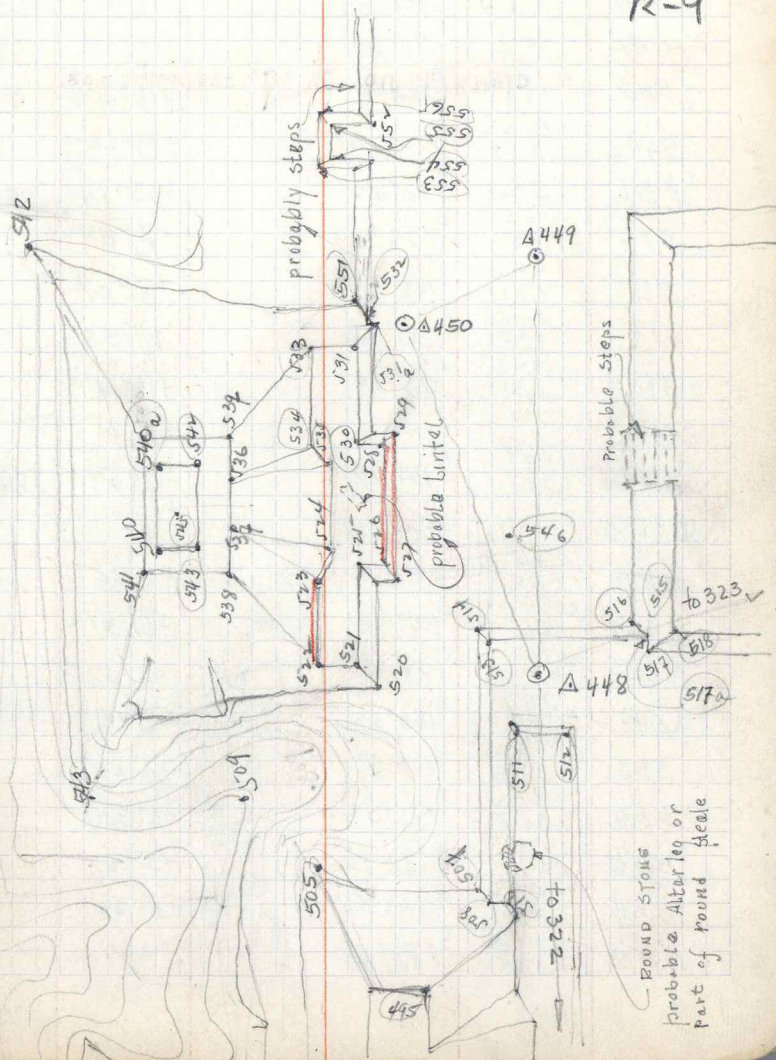
166
150
16

545 highest point on pyramid
522 Reading taken 1 mi. south of point.
on 523. use same level as 524
on 526 use elev same as 528

R-1

R-9

PYRAMID PROBABLY TERRACED. 3 terraces.



42

SEE page 28

At 0448

537	32.	R	105° 50'	+15° 01'	1.50
538	1.578 1.262	R	98° 20'	+13° 58'	1.42
543	1.592 1.25	R	103° 26'	+15° 45'	1.42
540	1.612 1.23	R	101° 32'	+14° 51'	1.42
541	39.4	R	99° 36'	+14° 59'	1.42
545	1.611 1.23	R	105° 20'	+16° 01'	1.42
540a	1.622 1.218	R	110° 20'	+14° 20'	1.42
536	36.4	R	112° 52'	+13° 14'	0.50
516	1.41 1.38	L	126° 01'	-7° 01'	1.42
515	1.465 1.375	L	108° 35'	+2° 01'	"
517	1.468 1.372	L	85° 22'	+1° 55'	"
518	1.485 1.355	L	98° 15'	+10° 01'	"
517a					
546.	1.465 1.375	R	157° 10'	-12° 01'	1.42

At A450

A448	1.585 1.255	0° ON 448	0° 01'	N 2° 30' E	+4.45	1.42
A449	1.534 1.306	L	107° 35'	575° W	+0° 31'	1.42
A547	1.76 1.08	L	73° 37'	59° W	-4° 32'	"
A548	1.70 1.14	R	143° 52'	534° E	-6° 45'	"
553	1.505 1.335	R	161° 8'		-8° 20'	"
555	1.512 1.328	R	175° 05'		-6° 35'	"
556	1.52 1.32	R	173° 30'		-7° 01'	"
554	1.496 1.344	R	168° 52'		-5° 20'	"
552	1.505 1.335	L	172° 45'		-3° 10'	"

0° 0
318
182

1.66
1.00
2x = 32

1.617
1.42
197
39.4

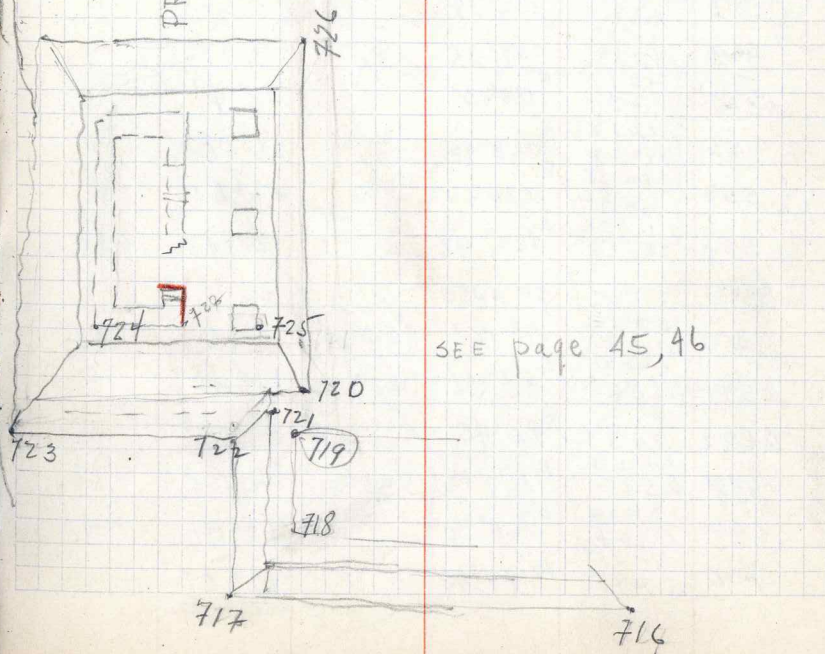
ON 538 Use same elev as 537.
545 highest pt on pyramid.
546 Coldest elev, debris level.

U-3

for No. S, 547 to -

SEE SK. Map p36.

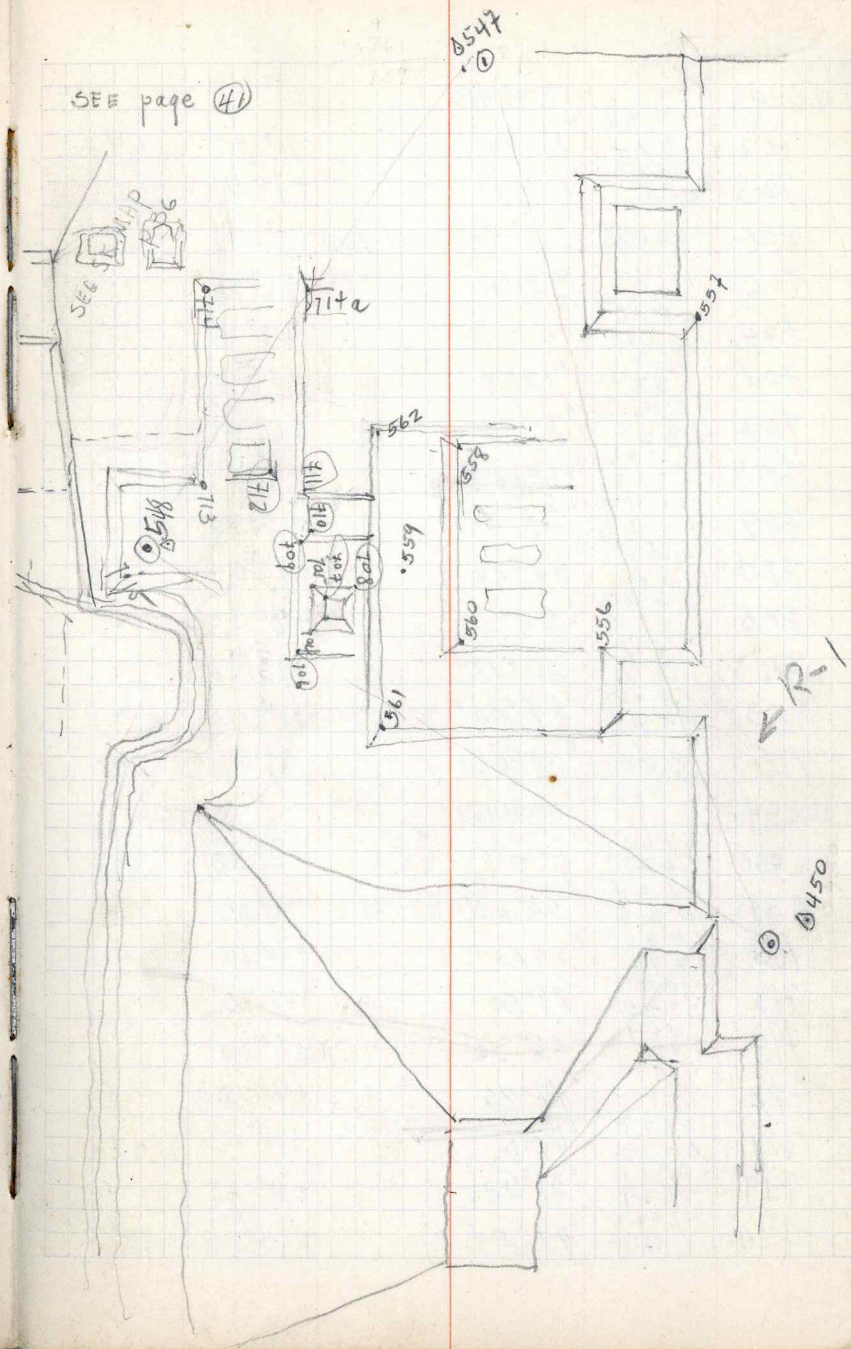
2 MY MAP
PROBABLE STRUCTURE



SEE page 45, 46

(43)

At Δ450		0°0'N 448		
551	1.451	R 127°12'	-9°55'	1.42
532	1.4445 1.3765	R 110°	+20°00'	
531a	3.35	R 93°10'	-	
531	1.454 1.381	R 80°5'	+20°01'	1.42
538	1.448 1.366	R 86°01'	+18°01'	"
535	1.496 1.345	R 47°8'	+14°35'	"
530	1.492 1.348	R 40°11'	+12°5'	"
529	1.448 1.366	R 26°5'	+5°14'	"
539	1.542 1.29	R 79°8'	+27°01'	1.42
542	1.04 0.761	R 75°23'	+26°21'	0.9
561	1.06 1.28	R 145°39'	-9°22'	1.42
559	1.56 1.28	R 156°39'	-7°55'	"
560	1.551 1.289	R 159°36'	-7°13'	"
563	1.61 1.23	R 156°15'	-8°4'	"
562	1.618 1.222	R 168°45'	-6°37'	"
558	1.603 1.237	R 174°16'	-6°6'	"
557	1.126 0.715	L 160°48'	-2°14'	0.92
At Δ548		0° N 450		
Δ450	1.701 1.139	0° 0' N 34° W	+6°52'	1.42
Δ547	1.604 1.186	287°36' S 63°15' W	+1°40'	"
Δ682	1.697 1.143	R 72°45' N 38°30' E	-7°0"	"
698	1.123 0.517	R 162°30' S 50° E	-9°15'	0.82
699	1.533 1.307	R 161°50'	-13°50'	1.42
700	1.541 1.295	R 177°40'	-10°0'	"



(44)

At A548		0°0N450		
702	1.496 1.344	151°15'	-11°0'	1.42
703	1.65 1.45	138°8'	-7°30'	1.55
701		PARALLEL to 700 + 702		
706	1.50 1.34	R 5°30'	+1°30'	1.42
704	1.516 1.324	0°0'	+1°15'	
705	1.51 1.33	12°0'	+5°20'	"
707	1.52 1.32	8°30'	+6°0'	"
708	1.532 1.508	16°10'	+4°0'	"
709	1.497 1.343	37°45'	+3°30'	"
710	1.50 1.34	42°20'	+6°0'	"
712	1.496 1.354	52°	+2°30'	"
711	1.51 1.33	60°15'	+2°15'	"
713	1.454 1.396	59°20'	+1°	"
715	3.40	R 95°45'	0°0'	"
At A547		0°0N450		
A 450	1.762 1.078	0°0'	N 9°E	+4°30'
CHK. A548	1.654 1.186	R 54°25'	N 63°15'E	-1°30'
716	1.548 1.292	R 1°10'		+3°45'
718	1.495 1.345	28°50'		+15°30'
717	1.469 1.371	26°30'		+4°30'
722	1.49 1.35	47°25'		+7°30'
721	0.807 0.633	43°15'		+11°0'
719	0.811 0.629	39°55'		+11°35'
720	1.522 1.318	47°0'		+13°5'

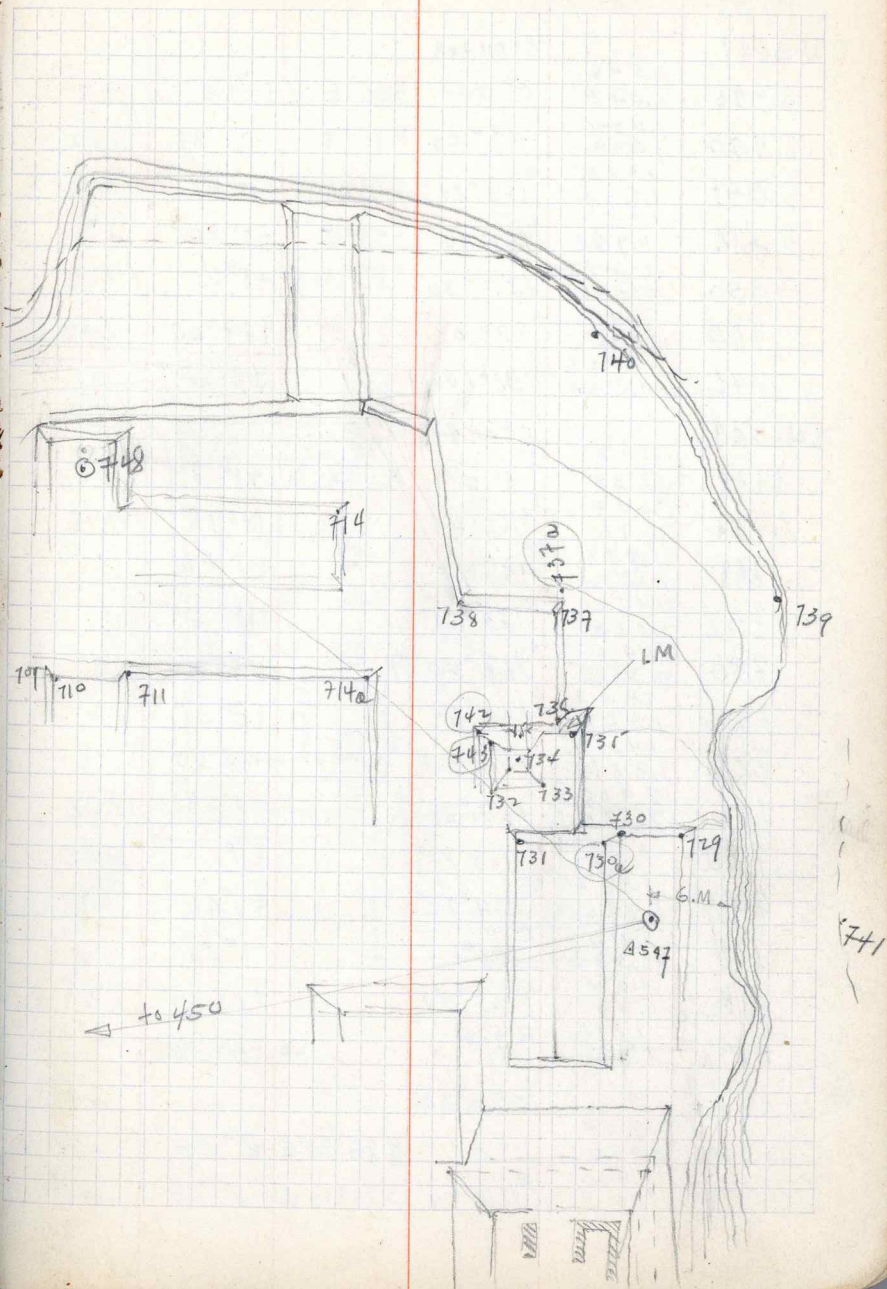
359.60
316.59
43.1

143.22
173.37
316.59

82° 36' 179.60
43.01 120.37
125.37 54° 23'

(45)

Start at 547		0° ON 450		
725	1.536 1.304	L 59° 30'	+19° 10'	1.42
727	1.236 1.004	L 65° 20'	+19° 5'	1.12
724	1.1713 0.947	L 75° 40'	+19° 30'	1.06
723	1.348 1.348	L 98° 20'	+3° 15'	1.42
728	1.463 1.377	L 76° 30'	+4° 30'	1.42
741	1.21 0.83	R 170° 0'	-22° 45'	1.02
729	3.65	R 106° 48'	0°	2.85 - 1.42
730a	4.10	R 63° 0'	0°	4.495 - 1.42
730	3.95	R 50° 10'	0°	-0.932 + 1.42
733	1.463 1.377	R 48° 30'	-1° 0'	1.42
734	1.475 1.365	R 49° 25'	+1° 32'	1.42
732	1.476 1.364	R 37° 45'	-1° 40'	"
743	1.49 1.35	R 52° 30'	-1° 40'	"
742	1.50 1.34	R 49° 35'	-2° 0'	"
736	1.488 1.352	R 86° 15'	-7° 35'	"
737	1.2115 1.0255	R 84°	-6° 30'	1.12
737a	1.518 1.322	R 90° 25'	-8° 30'	1.42
738	1.532 1.308	R 71° 40'	-5° 0'	1.42
714	1.56 1.28	R 68° 10'	-2° 35'	"
740	1.58 1.26	R 91° 30'	-8° 20'	"
741	2.50 0.99	R 110°	-10° 0'	1.12



40

At $\Delta 449$	1.546	0° ON 448			
$\Delta 448$	1.093	0° 0'	N 31° E	+ 3° 5'	1.32
$\Delta 450$	1.534 1.306	R 43° 51'	N 75° E	- 0° 29'	1.42
$\Delta 549$	1.603 1.237 1.612	R 168° 19'	S 19° 45' W	- 0° 45'	1.42
$\Delta 744$	0.988	L 152° 22'	S 59° W	+ 0° 20'	1.32
$\Delta 550$	1.248 0.792	L 125° 50'	S 85° 30' W	+ 1° 35'	1.02
745	1.49 1.35	L 92° 0'		+ 19° 20'	1.42
746	1.466 1.374	L 130° 10'		+ 0° 45'	"
At $\Delta 549$	1.605	0° ON 449			
$\Delta 449$	1.235	0° 0'	N 19° 45' E	+ 1° 0'	1.42
$\Delta 744$	1.642 1.198	L 109° 4'		+ 1° 16'	1.42
748	1.588 1.352	R 153° 27'		+ 11° 30'	"
752	1.492 1.348	R 175°		+ 16° 0'	"
750	1.4715 1.3685	L 167° 40'		+ 9° 0'	"
750w	1.463 1.377	L 159° 8'		+ 7° 35'	"
726	1.4585 1.3815	L 150° 20'		+ 1° 20'	"
751	2.915 2.725	L 167° 20'		+ 7° 30'	2.82
720	1.498 1.342	R 113° 35'		+ 1°	1.42
717	1.4525 1.3975	R 134° 22'		+ 2° 40'	1.42
719	1.507 1.333	R 108°		- 1° 50'	"
718w	1.514 1.30	R 75° 40'		+ 0° 30'	"
719w	1.515 1.335	R 71°		+ 0° 30'	"
At $\Delta 550$	1.248	0° ON 449			1.48
$\Delta 449$	0.792	0° 0'	N 85° 30' E	- 2° 35'	1.02
$\Delta 744$	1.485 1.155	R 115° 44'	S 21° 15' W	- 2° 25'	1.32

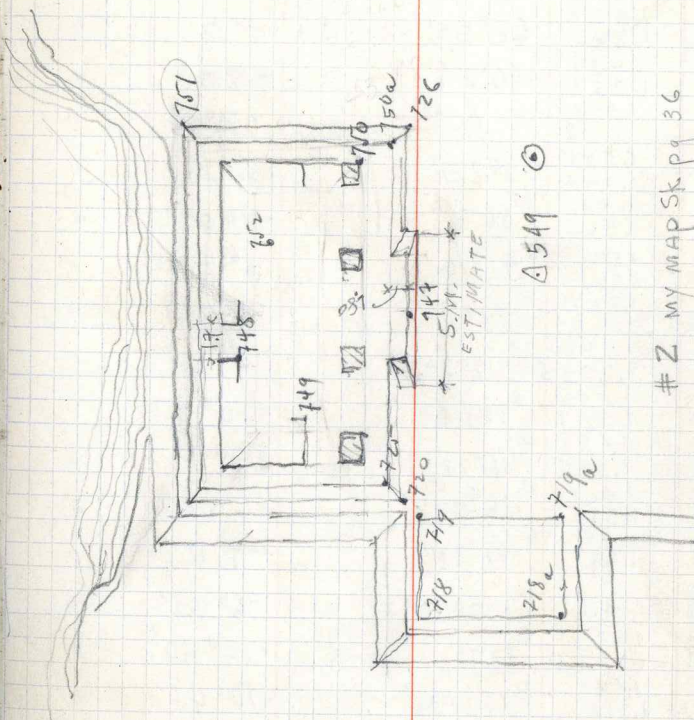
359.60
179.17
180.43

180.43
152.06
28.37

107.35
28.37
136° 12'

179.60
136.12
43° 48' ✓
43.51 ✓

752 highest point



SEE pg 42.

#2 MY MAP SK pg 36

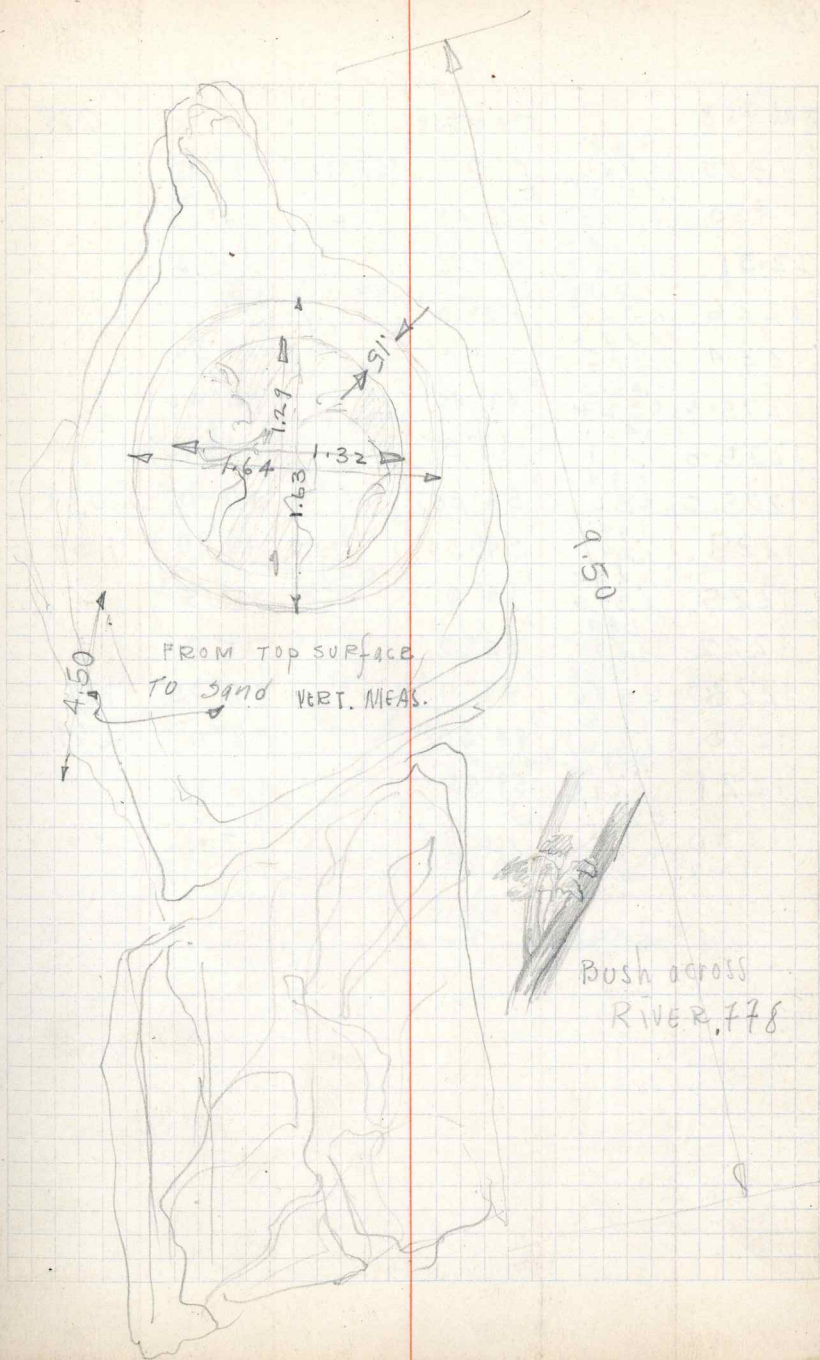
⑤ 549

42
312
68

1488
42
48
2
136

(48)

		Obs Bear.	VERT ANG	H.I
⊥ at 744		0° 0' N 449	M. H.I. →	1.40
Δ 449	1.733 1.067	0° 0'	N 59° E	-13'
Δ 550	1.565 1.235	37° 43'	N 21° 15' E	+2° 12'
Δ 549	1.6215 1.1785	31° 36'	N 89° 30' E	-1° 9'
Δ 775	1.74 1.06	150° 39'	S 29° 30' W	-6° 38'
⊥ at Δ 775		0° 0' N 744		1.40
Δ 744	1.74 1.06	0° 0'	N 29° 30' E	+6° 39'
Δ 776	1.615 1.185	R 163° 9'	S 12° 40' W	-11° 46'
⊥ at Δ 776				1.39
Δ 775	1.609 1.171	0° 0'	N 12° 40' E	+11° 44'
SACRIFICIAL ROCK.	1.63 1.25	134° 32'	S 62° W	-15° 10'
777	1.833 0.937	145° 18'		-13°
778	-	82° 20'		-

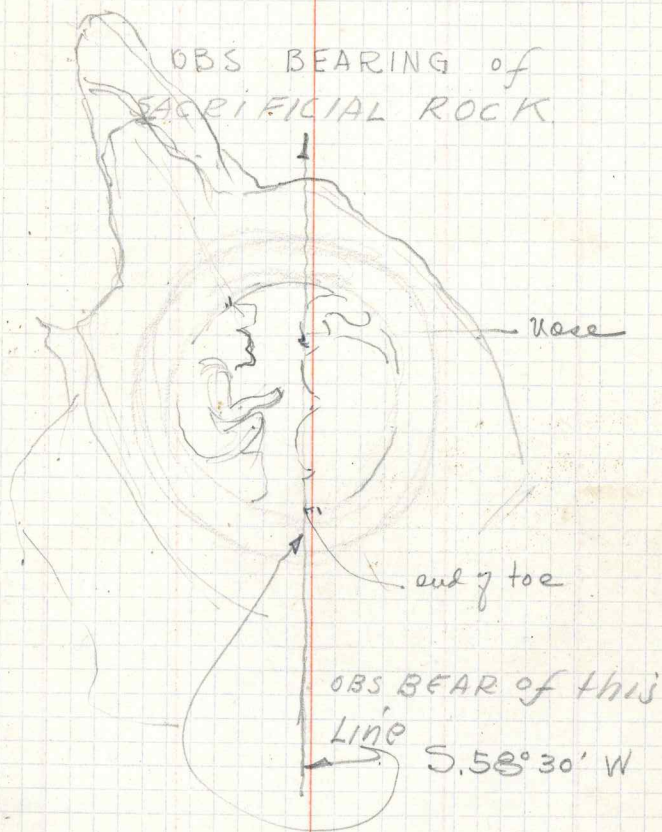


(49)

Not 753		0° 0' N 55° 0'			
550	1.64 1.14	0° 0'	S 62° 30' E	+ 1° 45'	
780	1.635 1.145	R		- 17° 30'	
1231	1.447 1.323	161° 48'	✓	- 14° 10'	
1226	1.435 1.345	113° 25'		- 9° 0'	
1224	1.443 1.337	112° 0'		- 1° 30'	
1225-a	1.453 1.327	51° 0'		+ 2° 30'	
1225-b	1.461 1.319	48° 40'		+ 4° - 10'	
1225-c	0.98 0.80	43° 0'		+ 0° - 15'	0.89
1229	1.49 1.29	54° 30'		+ 0° 40'	1.39
1225	1.475 1.305	60° 0'		+ 1° 15'	
1222	1.49 1.29	73° 0'		- 17° 0'	
1228	1.984 1.796	44° 0'		+ 0° 35'	1.89
1220	1.52 1.26	44° 50'		+ 8° 0'	1.39
1221	0.965 0.615	59° 55'		+ 6° 30'	
1230	5.15	R 100° 30'		-	

139

139

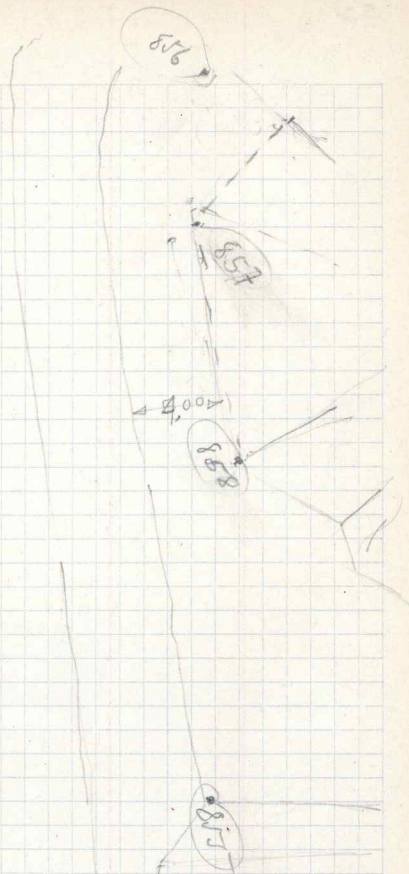


(52)

Not $\Delta 421$		0°0'N 318		1.42
4318	1.68 ✓ 1.16 ✓	0°0'	S 69°E + 1°42' ✓	1.42
849	1.47 ✓ 1.365	R 35°18'	+ 5°35'	1.42
848	1.49 ✓ 1.349	R 36°18'	+ 11°10'	"
851	1.55 ✓ 1.29	R 69°0'	+ 2°35'	"
852	1.57 ✓ 1.27	R 68°25'	+ 5°0'	"
853	1.60 ✓ 1.24	R 37°0'	+ 23°40'	"
850	1.008 ✓ 0.832	R 34°44'	+ 9°45'	0.92
854	1.978 ✓ 1.452	R 100°15'	- 17°25'	1.72
855	1.595 ✓ 1.245	L 72°10'	+ 12°0'	1.42
858	1.609 ✓ 1.231	L 62°25'	+ 16°45'	"
857	1.622 ✓ 1.218	L 119°	+ 16°	"
856	57	L 31°15'	+ 11°30'	1.52

SEE PAGE 36

1805
152
285
570

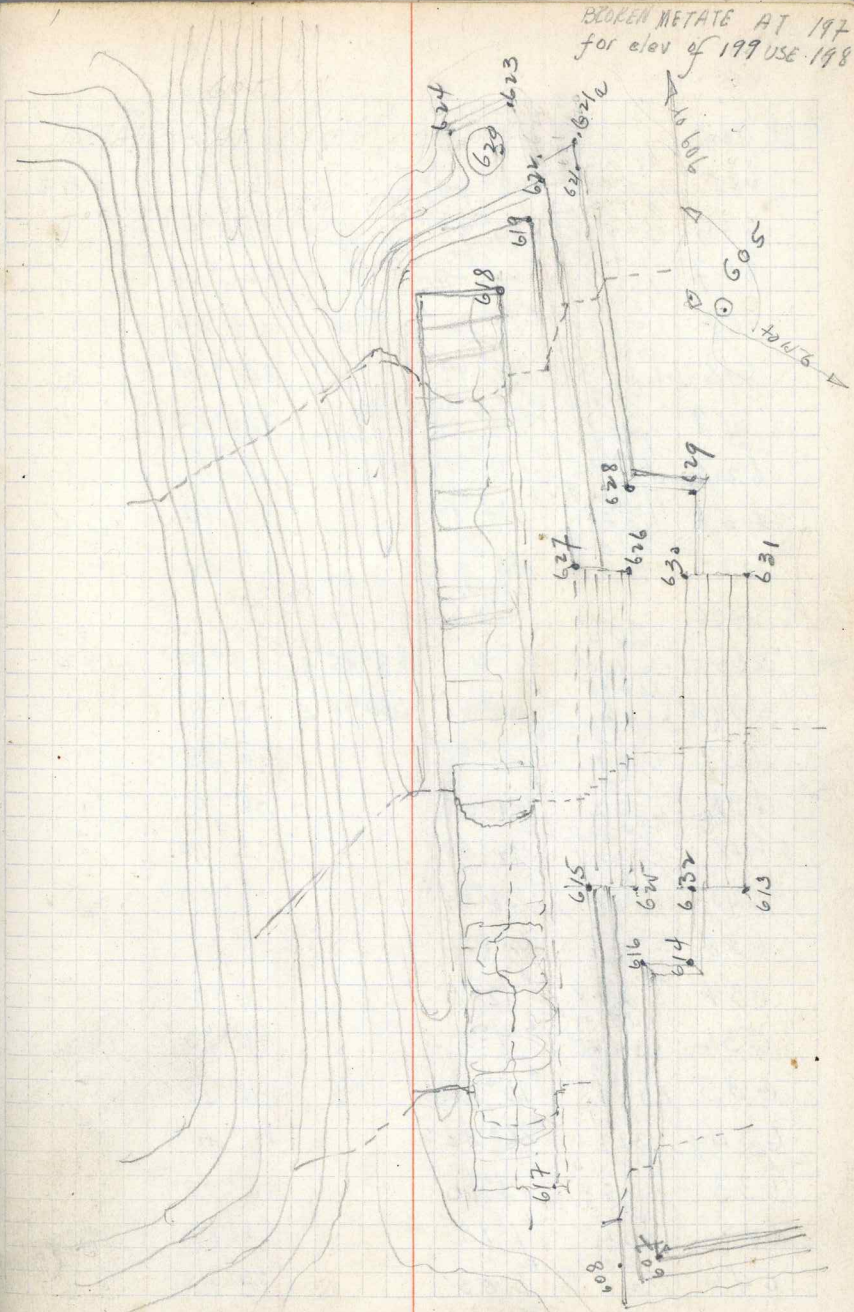


A 421 ○

(54)

SEE page 22 & 25

STATION	DIST.	Hor. Ang	Obs. Bear.	VERT. ANG	H.I.
at $\Delta 156$		$0^{\circ}0'113$			
$\Delta 113$	1.798 1.042	$0^{\circ}0'$	$N89^{\circ}30'W$	$-2^{\circ}17'$	1.42
$\Delta 605$	1.672 1.168	$126^{\circ}19'$	$S36^{\circ}0'E$	$-0^{\circ}38'$	1.42
607	1.633 1.207	$160^{\circ}25'$		$+1^{\circ}15'$	"
608	1.66 1.118	$160^{\circ}17'$		$+4^{\circ}35'$	"
609	1.1	$173^{\circ}54'$		$+9^{\circ}15'$	"
611	1.501 1.339	$150^{\circ}22'$		$+12^{\circ}35'$	"
610	1.48925 1.35075	$179^{\circ}10'$		$+9^{\circ}53'$	"
200	1.594348 1.246	$45^{\circ}39'$		$-0^{\circ}25'$	"
199	1.109 1.205	$54^{\circ}52'$		$+2^{\circ}50'$	"
198	1.595 1.248	$65^{\circ}24'$		$+4^{\circ}30'$	"
612	1.5745 1.2655	$65^{\circ}10'$		$+0^{\circ}15'$	"
197	1.63 1.21	$106^{\circ}24'$		$0^{\circ}0'$	"
at $\Delta 605$		$0^{\circ}0'156$			
$\Delta 156$	1.671	$0^{\circ}0'$	$N36^{\circ}W$	$+45'$	1.42
$\Delta 606$	1.640 1.20	$140^{\circ}41'$	$S3^{\circ}25'W$	$-3^{\circ}10'$	"
621	9.73	$141^{\circ}44'$		$+25'$	"
629	± 3.12	$R 31^{\circ}50'$		$+1.1.1.$	
628	± 2.93	$R 85^{\circ}6'$			
630	± 4.93	$R 36^{\circ}40'$			
631	± 6.05	$R 19^{\circ}26'$		$0^{\circ}0'$	
613	1.5011 1.3385	$R 44^{\circ}28'$		$+49'$	1.42
632	1.10015 1.3385	$R 50^{\circ}20'$		$+3^{\circ}4'$	"
614	2.4018 1.9082	$R 51^{\circ}11'$		$+2^{\circ}45'$	2.00
616	2.403 1.907	$R 60^{\circ}29'$		$+5^{\circ}10'$	2.00



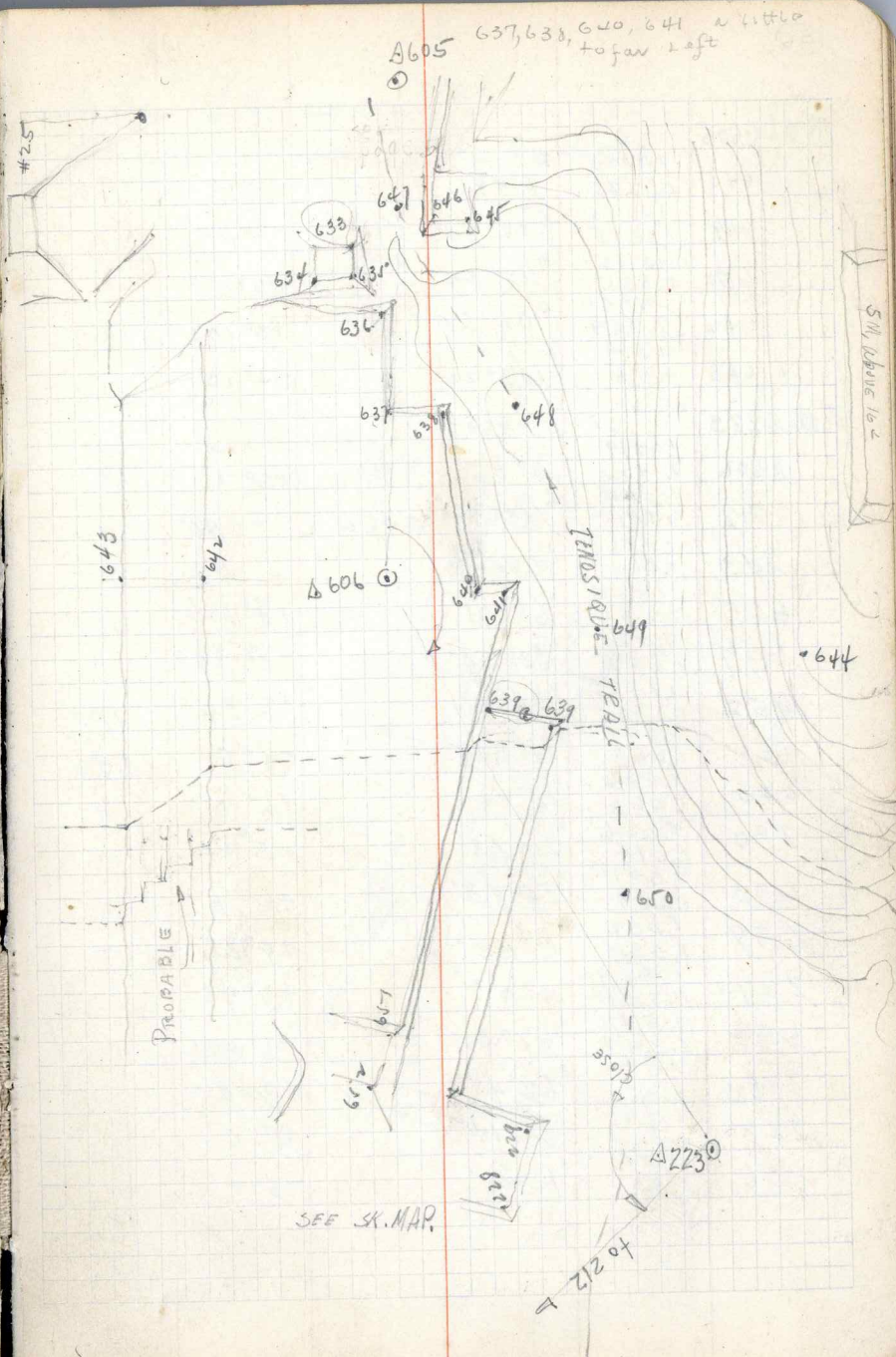
(53)

At Δ605

625	1.502 1.538	R 62°20'	+6°18'	1.42
615	1.5115 1.3285	R 76°28'	+14°00'	"
627	1.4700 1.3705	R 107°20'	+26°40'	"
617	1.5965 1.2435	R 73°35'	+9°30'	"
618	1.4812 1.3588	R 109°49'	+22°14'	"
619	1.472 1.368	R 178°8'	+20°20'	"
621a	1.375 1.469	L 141°51'	0°0'	"
622	1.371 1.483	L 157°10'	+8°10'	"
620	1.357 1.483	L 154°44'	+3°24'	"

At Δ606

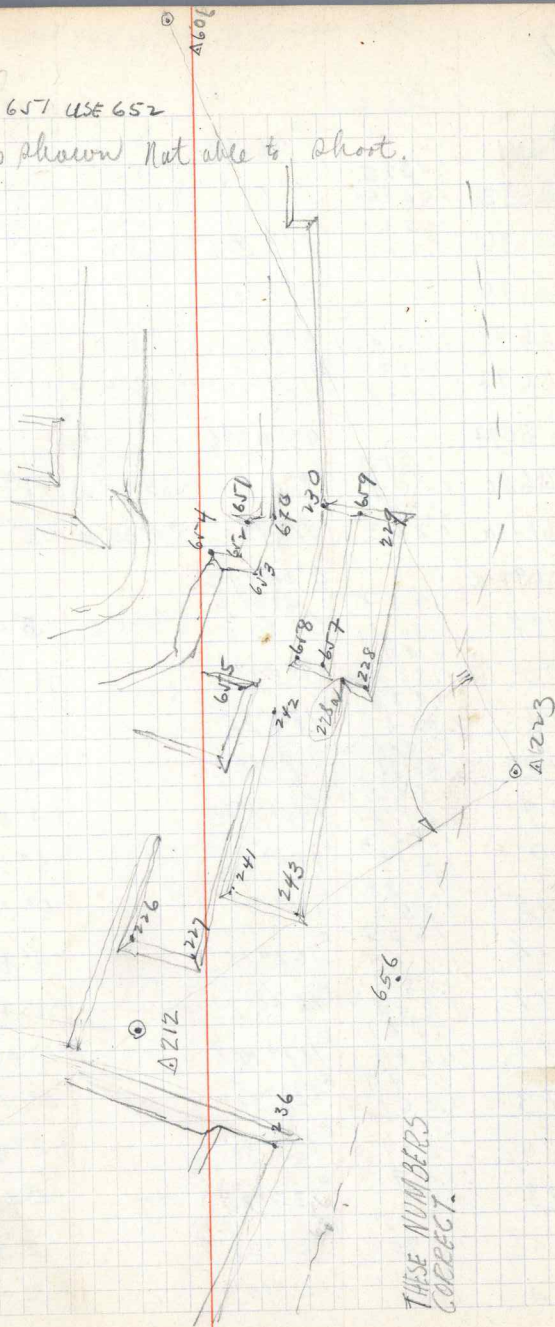
Δ605	1.640 1.200	006N605 0°0'	N3°45'E +3°10'	1.42
Δ223	1.6989 1.142	R 146°41'	S30°0'E -5°1'	"
639	1.5165 1.3235	R 132°48'	-7°35'	"
639a	1.503 1.337	R 144°0'	-6°0'	"
641	1.4295 1.3625	R 134°50'	-5°10'	"
640	1.469 1.371	R 138°57'	-3°50'	"
638	± 6.09	R 47°0'	0°0'	"
637	3.78 1.4935	R 12°0'	0°0'	"
636	1.3465	L 4°0'	+1°10'	1.42
635	1.519 1.321	L 15°22'	+6°10'	"
634	1.521 1.319	L 26°22'	+6°40'	"
633	1.540 1.300	L 13°30'	+5°20'	"
647	1.565 1.275	L 1°18'	+3°26'	"
646	1.55 1.29	R 3°53'	+5°25'	"
645	1.555 1.285	R 13°8'	+5°10'	"



(56)

Nat Δ606				
648	1.5125 1.3275	R 7°44'	- 31'	1.42
649	1.4815 1.3585	R 55°30'	-7°0'	"
650	1.505 1.335	R 116°52'	-10°50'	"
642	1.481 1.359	L 104°6'	+3°10'	"
643	1.50 1.30	L 103°20'	+17°10'	"
Nat Δ223				
Δ606	1.6989 1.142	0°0' N 36°W	+5°1'	1.42.
Close Δ212	1.649 1.191	L 103°30' S 46°45'W	- 41'	1.42
243	1.132 0.868	L 103°0'	- 50'	1.00
655	1.554 1.286	L 68°31'	+7°15'	1.42
654	1.588 1.252	L 32°30'	+8°30'	"
652	1.1675 0.8325	L 24°0'	+9°30'	1.00
651	1.591 1.249	L 17°50'	+9°0'	1.42
670	1.577 1.263	L 12°46'	+6°0'	"
230	1.526 1.314	L 20°38'	+5°20'	"
653	1.501 1.279	L 26°43'	+6°0'	"
659	1.506 1.334	L 11°45'	+4°28'	"
229	1.489 1.351	0°0'	+0°45'	"
657	1.500 1.340	L 62°30'	+6°20'	"
228W	1.49 1.35	L 68°45'	+3°0'	"
228	1.475 1.365	L 73°14'	0°0'	"
656	1.51 1.33	L 124°0'	-5°0'	"

for elev of 657 USE 652
658. draw as shown Nat able to shoot.

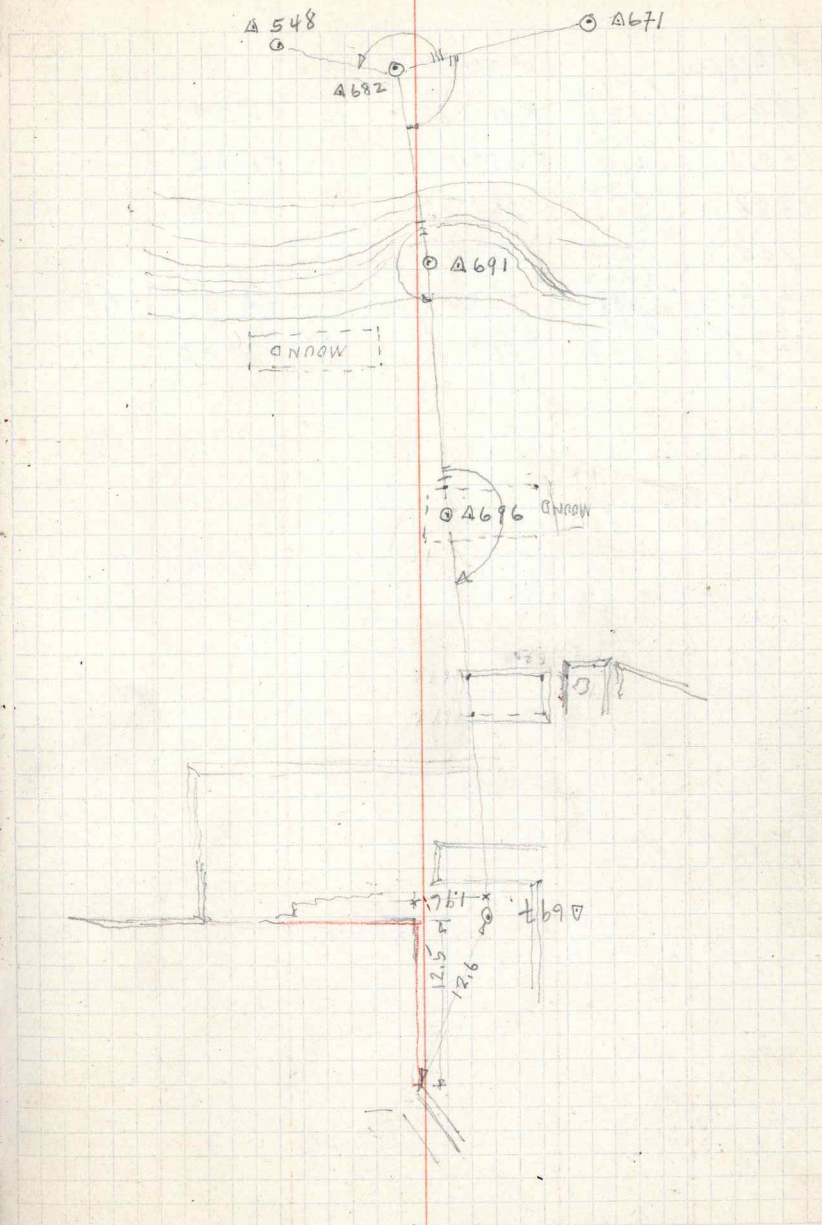


(57)

SEE PAGE (28) FOR Δ682

Point	Dist	0° ON	MEAS	H.I.	149
At Δ691	1.4225	0° 0'	N 83° W	-8° 13'	1.22
Δ682	1.0175	179° 52'	S 83° E	+6° 12'	1.42
Δ696	1.566	0° 691			
At Δ696	1.5655	0° 0'	N 83° W	-6° 3'	1.42
Δ691	1.2745	179° 12'	S 83° 45' E	+1° 15'	
Δ697	1.6425	0° ON 696		M.H.	1.33
At Δ697	1.107	0° 0'	N 83° 45' W	-1° 8'	"
Δ696	1.397	91° 42'	S 4° 30' W	+5° 50'	"
Δ697-a	1.263	0° ON 697		M.H.	1.42
At Δ697-a	1.487	0° 0'	N 4° 30' E	-5° 40'	1.42
Δ697	1.353	3° 51'		-6° 10'	1.42
1200	1.477	178° 25'		-5° 0'	1.42
1207	1.363	169° 45'		-4° 50'	"
1208	1.474	149° 17'		+4° 45'	1.72
1209	1.366	154° 45'		-6° 25'	1.62
1210	1.5215	180° 0'		-6° 30'	1.42
1215	1.3185	162° 15'		-4° 45'	"
1214	1.823	164° 12'		-4° 15'	"
1211	1.617	157° 15'		-3° 45'	"
1212	1.752	148° 30'		-3° 15'	"
1213	1.488	140° 30'		-2° 50'	"
1216	1.588	137° 25'		-2° 40'	"
1218	1.252	126° 38'		-2° 30'	"
1217	1.605	111° 15'		-2° 00'	"
1212	1.235				
1211	1.586				
1212	1.254				
1213	1.561				
1213	1.279				
1213	1.579				
1213	1.261				
1216	1.57				
1218	1.26				
1217	1.545				
1217	1.295				
1204	1.531				
1204	1.309				

SEE SK. MAP, FN, P 36



(58)

at A697-a		0° ON 697		
1203	1.513 1.327	R 106° 8'	-1° 50'	1.42
1201	1.522 1.318	R 88° 15'	-1° 25'	"
1202	1.532 1.308	R 86° 0'	-1° 30'	"
1205	4.87	R 99° 30'	-	-
1206	1.452 1.388	R 137° 15'	-4° 0'	1.42
1219	1.493 1.347	R 31°	-3° 40'	"

(59)

3/185

DATA 564		0° ON 160	MEAS H.	1.59
1024		R 26° 50'	DIRECTION ONLY	
1023	3.123 2.912	R 6° 42'	+9° 30'	3.02
1022	1.3185 2.9215	R 19° 46'	+10° 31'	"
586	1.295	L 3° 42'		
588	2.2635 2.1765	L 43° 12'	-4° 12'	2.22
1010	1.501 1.339	L 64° 18'	-5° 30'	1.42
1009	1.498 1.342	L 76° 31'	-7° 25'	"
1000	1.476 1.354	L 78° 5'	+0° 40'	"
1001	1.464 1.376	L 113° 44'	+9.19	-1° 36'
1020	1.48 1.36	L 116° 40'	+8° 30'	"
1021	1.517 1.323	L 118° 2'	+5° 10'	"
603	8.02	L 131° 57'	-	
589a	6.78	L 174° 20'	-	
589	1.50 1.34	R 168° 29'	-40'	1.42
590	1.50 1.34	R 136° 5'	+16.18	-40'
601		R 131° 18'	+16.32	
596		R 122° 30'	+14.14	
1002		L 151° 48'	+11.28	
1003	1.538 1.382	R 139° 25'	+37'	1.42
1004	1.547 1.293	R 145° 26'	+4° 0'	"
1019	1.501 1.299	R 175° 50'	+2° 15'	"
DATA 587		0° ON 564		
Δ564	1.586 1.254	0° 0'	N 90° 30' W -25'	1.42
601		L 1° 49'	DIRECTION ONLY	
1003	1.472 1.368	L 21° 56'	+30'	1.42

CONTINUED from page 31

1028	1.793 1.644	R 46° 18'	-39'	1.72
1027	1.486 1.354	R 65°	+1° 6'	1.42
1027b	1.522 1.318	R 63° 50'	+1° 21'	1.42
1027a	2.525 2.315	R 64° 17'	+2° 5'	2.42
1027c	2.528 2.312	R 59° 21'	+2° 0'	2.42
1026	1.587 1.455	R 36° 33'	-0° 54'	1.52
1007	1.477 1.363	L 59° 5'	+13° 40'	1.42
1008	1.476 1.364	L 81° 27'	+14° 40'	1.42
1006	1.4675 1.3725	L 98° 16'	+9°	1.42
1005	1.4585 1.3915	L 110° 0'	+0° 25'	1.42
1014	1.519	R 22° 30'	-	-
1013	2.69	R 24° 32'	-	-
1012	4.27	L 167° 10'	-	-
1016	5.02	R 170° 14'	-	-
1011	6.84	L 161° 18'	-	-
261a	8.51	R 151° 10'	-	-
261d	7.1	R 120° 50'	-	-
261b	7.36	R 99° 15'	-	-
261c	1.879 1.761	R 106° 41'	+9° 0'	1.82
261	1.481 1.359	R 140° 10'	+6° 0'	1.42
1011.6	1.892 1.748	R 145° N-1	+4° 40'	1.82

1.42 1.472
1.364 1.32
0.52 0.52

(60)

Point	Dist	Angle	MEAS	Dist	
Δ 323	1.305	0° 0' N 318	MEAS 4.5	1.50	
Δ 318	0.695	0° 0' N 2° W	-2° 37'	1.00	
Δ 322	1.295 0.705	R 71° 29'	N 69° 30' E	-0° 20'	1.00
Δ 448	2.189 1.811	R 112° 31'	S 69° 30' E	-3° 53'	2.00
Δ 776	1.5155 1.3245	R 131° 45'	S 50° 25' E	-0° 35'	1.42
Δ 779	1.4695 1.3705	R 75° 58'	N 78° 5' W	+0° 45'	1.42
Δ 777	1.6015 1.2385	R 61° 25'	N 63° 30' W	-1° 30'	1.42
832	1.4515 1.3885	10° 10'	+6.5	-4° 50'	"
831	1.4715 1.3685	1° 37'		-10° 0'	"
830	1.462 1.377	R 17° 38'		-8° 17'	"
829	1.484 1.356	R 21° 5'		-10° 0'	"
828	1.50 1.34	R 67° 49'		-7° 50'	"
827	1.486 1.353	R 79° 20'		-6° 45'	"
826	1.0005 1.8395	R 87°		-5° 10'	1.92
825	1.4835 1.3565	R 81° 54'		-2° 53'	1.42
824	1.489 1.351	R 98° 22'		-2° 20'	"
✓ 788	1.453 1.387	156° 42'	+6.88	+3° 15'	"
✓ 790	1.4735 1.3665	R 158° 36'	+11.0	+2° 5'	"
✓ 793	1.795 1.845	R 163° 50'		+1° 50'	1.82
821	1.551 1.329	162° 18'		+22° 50'	1.42
✓ 781	1.495 1.345	148°		+17° 20'	"
✓ 782	1.497 1.343	149° 55'		+16° 30'	"
✓ 833	1.499 1.341	142° 0'		+16° 34'	"
✓ 834	1.488 1.352	134° 20'		+8° 25'	"
✓ 779	1.4805 1.3595	143° 35'		+10° 10'	"
780	1.484 1.356	147° 7'		+10° 5'	"

156.5
103.3
53° 2'
55.30
108.32

179.60
108.32
71° 28'

3.82
94.22
55.30
38.62

100.5
38.52
138.57

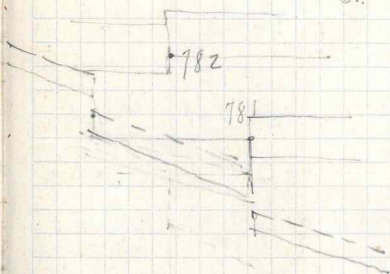
179.60
138.57
41° 3'

71° 28'
51.3
112° 31'

6.2
3
6.5

4.3
3.7
6.6

for elev. of 834 use 779



1.42
1.839
8.1
100
92
8.

SEE pages 26-27 for Δ 322, Δ 318

6.6

10.70

(61)

At 323		0° 0' N 318		
✓ 834	1.483 1.354	125° 50'	71° 10'	1.42
✓ 778	1.476 1.364	142° 15'	71° 50'	"
✓ 789	1.098	155° 30'	-	-
ATA 776		0° 0' N 323		
Δ 323	1.5155 1.3245	0° 0'	N 50° 25' W	+0° 25' 1.42
Δ 322	1.6815 1.585	101° 4'	N 50° 30' E	+0° 20' "
Δ 448	1.522 1.318	142° 43'	S 87° 30' E	-8° 20' "
✓ 790	1.471 1.369	28° 10'		+4° 0' "
✓ 788	1.501 1.339	24° 49'		-3° 15' "
821	1.539 1.301	53° 57'		+21° 23' "
833	1.541 1.399	39°		+11° 0' "
✓ 782		40° 48'	HOR ANG only. WANTED	
✓ 781		38° 26'		
✓ 834		34°		
✓ 780		36° 25'		
✓ 779		33° 5'		
✓ 835		29° 49'		
✓ 778		31° 40'		
✓ 793	1.47 1.37	51° 25'	+0° 30'	1.42
✓ 793a	1.458 1.382	71° 10'	-2° 10'	"
✓ 798	1.474 1.366	83° 20'	-1° 20'	"
ATA 323		0° 0' N 318		
Δ 318	1.305 0.695	0° 0'		H I 1.50 -2° 37' 1.00
Δ 776	1.596 1.402	131° 45'		-0° 24' 1.50

TRANSIT REVERSED

READING 180° -2° 37'

original " 0° 0' -2° 37'

(62)

Point	Dist	Bearing	Angle	Dist
Not at 323				
821-a	1.610 1.390	L 166°40'	-	+22°30' 1.50
821-b	1.611 1.389	L 152°2'	-	+22°35' "
833-a	1.592 1.403	L 149°34'		+21°12' "
843	1.651 1.3485	L 116°50'		+20°55' "
840	1.161 0.839	L 99°30'		+21°0' 1.00
839	1.971 1.629	L 97°22'		+20°15' 1.80
831	1.579 1.421	L 89°6'		+6°20' 1.50
835	1.558 1.42	L 72°55'		+0°30' 1.50
833-b	1.559 1.441	L 115°30'		+7°0' 1.50
836	1.622 1.378	L 68°30'		+1°15' 1.50
418	1.647 1.3525	L 29°15'		-3°40' "
417	1.657 1.343	L 27°50'		-1°51' "
418-a	1.66 1.34	L 32°24'		-2°5' "
416	1.58 1.22	L 20°50'		-1°35' 1.40
420	1.672 1.308	L 39°5'		+0°35' 1.50
420-a	1.646 1.334	L 33°54'		-0°25' 1.50
817	1.619 1.382	R 138°45'		-1°13' 1.50
816	1.601 1.399	R 142°42'		-1°0' "
811	1.891 1.709	R 150°33'		-0°10' 1.80
809-a	1.596 1.404	R 154°15'		-0°55' 1.50
809	1.594 1.406	R 154°57'		-1°0' 1.50
810	1.799 1.6092	R 155°10'		+2°25' 1.70
820	1.624 1.376	R 146°37'		+1°24' 1.50

165
150
15

Point	Dist	Bearing	Angle	Dist
Not at 776				
4323		0°0'323		
Δ322		R 101°4'		
821-a	1.625 1.395	L 58°37'		+22°15' 1.51
821-b	1.642 1.478	L 50°48'		+19°30' 1.51
833-a	1.635 1.385	L 46°42'		+16°22' 1.51
843	-	L 40°22'		- R-P
842	-	L 32°30'		- "
841	-	L 31°40'		- "
840	-	L 31°0'		- "
839	-	L 30°30'		- "
817	-	L 46°30'		-
816	-	L 104°20'		-
811	-	L 74°40'		-
809-a	-	L 79°45'		-
809	-	L 77°26'		-
810	-	L 83°8'		-
805-a	1.641 1.4565	L 86°14'		-0°51' 1.51
820	-	L 128°10'		-
820-a	1.577 1.443	L 112°47'		+4°10' 1.51
847	3.641 3.379	L 94°16'		+3°16' 3.51
846	1.61 1.41	L 93°4'		+2°41' 2.51
803	1.5765 1.4135	L 87°		+1°30' 1.51
806	1.578 1.4420	L 92°15'		+2°12' 1.51
845	1.74 1.28	L 34°16'		+16°50' 1.51

MEAS. H.L. 1.51

(64)

SEE PAGE 5.

Point	Top of	ACROPOLIS	AB MEASURED	actual
At Δ B		0° 0' N.A.		1.46
Δ A	1.198	0° 0'	S. 39° 45' W + 11° - 0'	1.46
Δ R	1.053 1.367	L 80° 32'	- 0° 4'	1.46
U ₅	1.685 1.255	L 2° 9'	+ 1° 25'	"
U ₆	1.671 1.249	L 13° 50'	+ 1° 53'	"
U ₇	48.0	L 9° 26'	+ 8° 26'	"
U ₃	1.716 1.204	R 4° 45'	+ 10° 10'	"
U ₅	1.722 1.197	R 9° 55'	+ 10° 15'	"
U ₄	1.725 1.194	R 13° 35'	+ 9° 31'	"
U ₂	1.721 1.199	R 14° 39'	+ 9° 53'	"
U ₁	45.6	R 24° 24'	+ 10° 22'	"
V ₁	1.762 1.158	R 26° 39'	+ 16° 4'	"
V ₂	55.8	R 32° 37'	+ 17° 35'	"
V	37.8	R 41° 56'	+ 12° 42'	1.66
U ₈	1.999 1.716	R 54° 10'	+ 3° 52'	1.86
U ₉	1.772 1.748	R 76° 34'	+ 2° 21'	1.86
P	1.538 1.392	R 77° 16'	+ 3° 22'	1.46
P ₂	1.711 1.608	R 63° 16'	+ 5° 0'	1.66
P ₁	3.69	R 2° 18'	-	-
D ₁	2.749 2.571	L 42° 12'	+ 4° 8'	2.66
D ₂	3.040 2.875	L 40° 45'	+ 4° 5'	2.96
S ₁	1.606 1.314	R 5° 26'	+ 2° 30'	1.46
K ₁	1.527 1.393	R 15° 30'	+ 6° 4'	1.46
U ₁₀	1.60 1.32	R 72° 4'	+ 5° 53'	"
U ₁₃	1.578 1.342	L 10° 50'	+ 6° 20'	"

16.4
46
18

170
146
24

16.6
46
195
20

17.3
146
229
2

671
46
211
422

146
1198
26.2

1840
5860
189
378
52.4

60.4

Plinth

1138
146

7.8

46
392

68

3.30

139.0

f.l.

AB

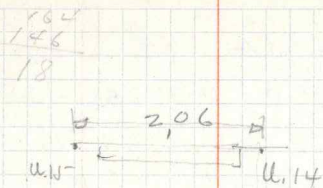
PLATA Level

1385
2.77

A.7.7A

65

At A, B,					
U ₁₂	1.592 1.326	105°0'		+ 11°20'	1.46
U ₁₁	1.615 1.305	105°0'		+ 13°25'	1.46
Δ 87	36.	106°26'	S 66°30' E	+ 14°49'	1.46
U ₁₄	1.604 1.316	179°35'		- 13°30'	1.46
U ₁₅	1.605 1.315	R 176°9'		- 13°54'	1.46
At Δ A,		0°0' N B	MEASURED H.T. of A. 1.18		
AB.	1.428 0.912	0°0'	N 39°45' E	- 10°56'	1.18
Δ C.					1.18
Δ R	1.449 0.911	R 21°10'	N 61° E	- 10°53'	1.18
D ₁	1.39 0.92	R 17°24'		- 13°51'	"
D ₂	1.39 0.92	R 16°22'		- 14°20'	"
F ₁	1.30 N 1.05 N	R 39°32'		- 25°24'	"
F ₂	3.31 3.049	R 55°33'		- 17°35'	3.18
W ₁	-	R 73°35'		-	-
61a	2.589 2.391	R 148°53'		0°0'	2.49
55a	-	127°25'	elev only	0°0'	2.384
68a	1.312 1.048	111°35'		+ 6°38'	1.18
68b	1.553 1.207	111°6'		+ 6°38'	1.38
Δ 69	1.322 1.038	122°33'		+ 7°26'	1.18
E ₂	1.273 1.057	82°		+ 7°45'	1.18
V ₂	1.328 1.032	70°50'		+ 11°40'	1.18
E	-	94°		-	-
V ₃	1.2675 1.0925	46°20'		- 8°25'	1.18
V ₄	1.2425 1.1125	63°0'		- 6°40'	1.18



SEE L.S. Notes
for floor level.

1.444
0.912
52.8
52.4
4

47

53

1.44
1.18
1.18
36
3.18

PLAZA LEVEL .36 below plinth of 48

E₂ is terrace wall

ulev.

⊙ Δ B

(66)

Point	Dist	Bearing	MEAS	H.I.	1.48
At 11		0° ON 4.			1.48
Δ 4.	1.262	0° 0'	N 31° 56' E	-1° 32'	1.48
[STRAS] In	1.5-85 1.4015	R 14° 6'		-16° 32'	1.48
85	1.5-2 1.44	L 27° 35'		+3° 24'	1.48
20.d	1.5-4 1.406	L 23° 0'		+5° 0'	"
20.c	1.5-6 1.399	L 25° 19'		+4° 10'	"
20.b	1.5-75 1.355	L 42° 54'		+8° 0'	"
20.a	1.5-80 1.360	L 38° 3'		+12° 52'	"
19.a	1.5-81 1.375	L 109° 22'		+12° 30'	"
20.e	1.5-61 1.3985	L 93° 26'		+4° 45'	"
20.h	1.6-15 1.225	L 33° 51'		+20° 0'	1.42
20.g	0.65 0.31	L 11° 33'		+20° 35'	0.48
20.f	0.62 0.339	L 12° 34'		+16° 50'	"

SEE Page ③

Point	Dist	Bearing	MEAS	H.I.	1.48
At Δ 70a		0° ON 70			1.48
Δ 70	1.772 1.188	0° 0'	S 22° 45' E	+17° 21'	1.48
Δ 70b	1.5-985 1.3625	L 64° 30'	N 7° 15' W	-17° 55'	1.48
60-2	1.5-3 1.407	L 33° 15'		+4° 45'	"
60-3	1.5-2 1.408	L 13° 30'		+3° 44'	"
60-4	1.5-2 1.408	R 4° 21'		+2° 20'	"
60-7	1.5-82 1.378	R 12° 50'		+3° 46'	"
60-9	1.6-3 1.33	R 18°		+5° 0'	"
60-10	1.6-4 1.32	R 20° 38'		+4° 50'	"
60-11	1.6-16 1.344	R 33° 5'		+3° 20'	"
60-6c	1.5-64 1.396	R 36° 8'		+0° 30'	"

SEE page 8-9

74
145
1406
74
122

147° 6'

24

+13.5

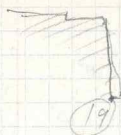
23.8

60-2 bottom of terrace
60-9 top of mound moved Right .50
60-6 bottom of terrace

(67)

N at $\Delta 70a$		0° ON 70		
60-5	1.43	R 39° 5'	-35'	1.48
60-8	1.6085	R 10° 40'	+6°	1.48
60-18	1.36	R 0° 54'	+7° 45'	1.48
60-17	1.65	R 37°	+3° 0'	1.48
60-16	± 5.00	R 65°	-	-
60-19	2.062	L 50° 5'	+3° 17'	2.00
60-1	1.938	L 47° 11'	+7° 35'	1.48
60-20	1.565	L 48°	+9° 25'	"
60-12	1.37	L 77° 40'	+17° 15'	"
60-13	± 4.25	R 79° 30'	-	-
60-15	1.53	L 29° 20'	-5° 15'	1.48
N at $\Delta 70b$		0° ON 70a		1.42
$\Delta 70a$	1.359	0° 0' S 7° 15' E	+18° 25'	1.42
$\Delta 70c$	1.65	L 79° 50' N 7° W	-34°	1.42
60-30	1.20	R 157° 25'	-30°	1.42
60-31	1.489	L 165° 0'	-35°	1.42
60-29	1.351	R 122° 20'	-28° 30'	1.42
60-28	1.482	R 91° 30'	-25° 15'	"
60-27	1.358	R 47° 24'	-1° 30'	"
60-22	1.512	R 30°	-2°	"
60-26	1.328	R 29° 20'	-0° 30'	"
60-21	1.484	L 62°	-2°	"
60-25	± 4.50	L 61° 10'	-	-
60-24	± 3.10	L 56° 40'	-	-
60-23	± 2.55	L 35° 30'	-	-

60-19 paint on wall.



$$\begin{array}{r} 165 \\ 120 \\ \hline 45 \end{array}$$

(68)

Not Δ 70c		0° on 70b		1.47	
Δ 70b	1.70 1.25	0° 0'	S 7° E	+34° 10'	1.47
Δ 281	1.670 1.270 1.533	163° 25'	N 90° 30' E	-32°	1.47
60-32	1.407	R 45° 45'	-	+22° 45'	"
60-33	1.527 1.413	R 62° 10'	-	+14° 30'	"
60-34	1.528 1.412	R 74°		+9° 45'	"
60-35	1.992 1.808	R 106° 12'		-14° 20'	1.90
60-36	21.6	R 112° 41'		-16° 30'	1.75
60-38	1.64 1.30	R 136°		-22° 20'	1.47
60-37	1.655 1.285 1.615	R 154°		-23° 30'	1.47
279a	1.275	147° 25'		-30° 30'	1.47
279	32.0	132° 20'		-32°	2.15
278a	1.555 1.385	70°		-17°	1.47
276a	27.0	82° 35'	elev ONLY	-2°	1.57

181-8

125

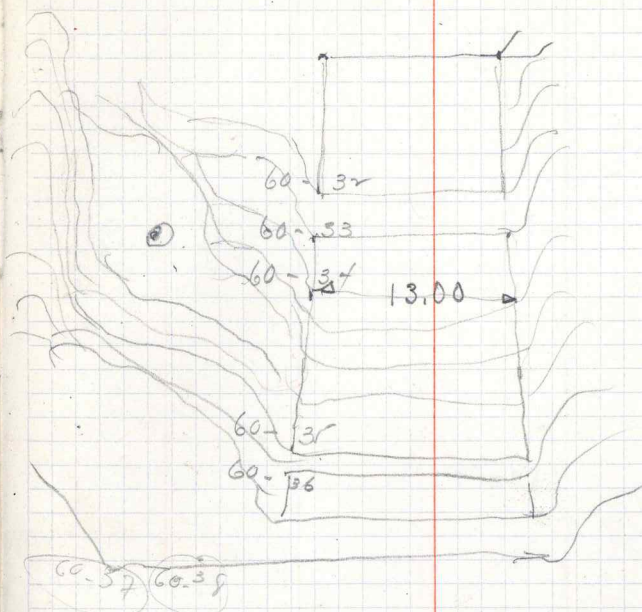
108

21.6

1705

157

135



215

199

16

215
199

(70)

See page 6.

at Δ A.	1.585	0° 0' NAC		1.42
Δ C	1.255	0° 0'	N 28° 30' E - 4° 2'	"
1062	1.503 1.247	37° 6'	-9° 30'	"
1065	1.538 1.302	102° 35'	-7° 35'	"
1064	1.517 1.323	108°	-7° 25'	"
1063	1.49 1.35	119° 30'	-10° 35'	"
1059	1.121 0.919	172° 12'	-7° 25'	1.02
1058	1.528 1.312	167° 36'	-2° 30'	1.42
1057	1.53 1.31	161° 0'	-1° 10'	1.42
1056	1.548 1.292	156° 40'	14° 30'	1.42
1066	1.615 1.1785	R 172° 45'	-3° 0'	"
1067	1.658 1.182	R 176° 40'	-3° 0'	1.42

(71)

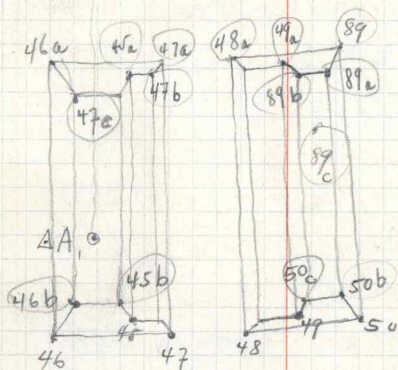
SEE PAGE ②

At A.		0° ON C.		
Δ C	1.585 1.255	0° 0'	N 28° 30' E	- 3° 57'
Δ H, B	1.865 0.975	179° 58'	S 28° 30' W	- 2° 0'
Δ 28	1.717 1.123	166° 33'	S 42° W	+ 2° 37'
Δ 29	1.556 1.284	155° 55'	S 52° 30' W	+ 4° 40'
46.b				
45 b.	14 J-15 1.3985	P 160° 30'		- 5° 55'
47.	1.476 1.364	R 140° 35'		- 14° 0'
48	1.500 1.340	R 123° 30'		- 9° 50'
89c	1.528 1.312	R 68° 9'		+ 0° 27'
89a	1.030 1.305	R 61° 37'		- 1° 30'
84a	1.512 1.328	R 45° 18'		- 8° 20'
47a	1.4935 1.3465	R 29° 30'		- 10° 35'
50	1.4735 1.3665	R 164° 20'		- 13° 35'

At H, B		0° ON A.		
Δ A	1.865 0.975	0° 0'	N 28° 30' E	+ 2° 4'
29	1.751 1.091	190° 39'	N 18° 45' E	+ 4° 58'
28	1.594 1.246	23° 38'		+ 9° 20'
D	1.651 1.189	180°	S 28° 30' W	- 0° 40'
F	1.6165 1.2275	118° 27'	S 33° E	- 1° 30'
G	1.67 1.17	101° 21'	S 49° W E	- 2° 10'
E	1.91 0.93	101° 10'	S 50° 30' E	- 2° 20'

WEST COURT PLAZA.

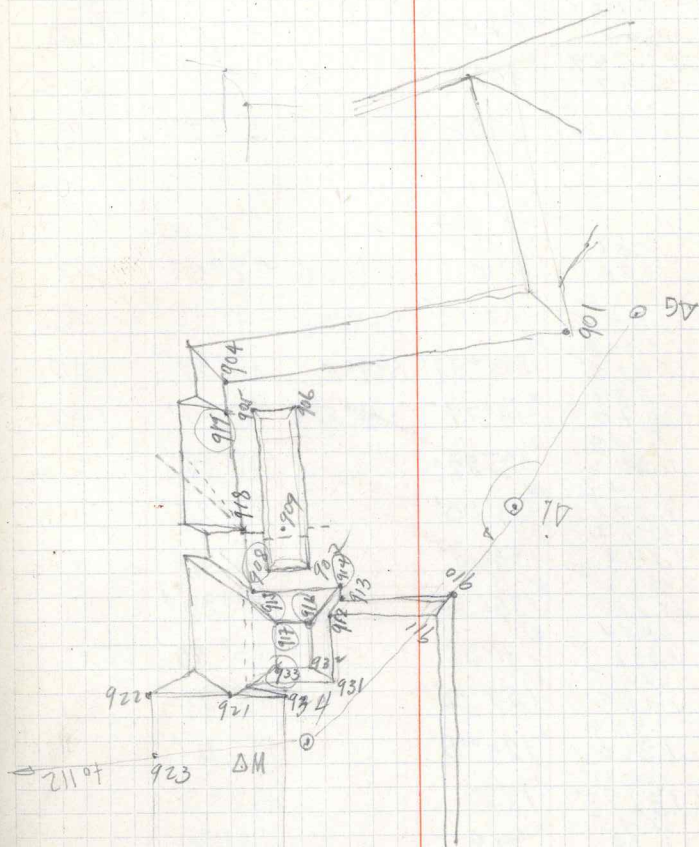
BALL COURT

SEE SK. MAP
page (19)

73

Point	Dist	Angle	Dist	Angle	Dist
At ΔG		0°00' N HB			
Δ HB	1.67	0°0'	N 50°0' W	+2°03'	1.42
Δ L	1.562 1.278	R 95°25'	N 45°25' E	0°0'	1.42
Δ K	1.561 1.279	L 161°39'	S 31°45' E	-13°25'	1.42
Δ E	1.66 1.18	R 179°37'	S 50°30' E	-2°40'	1.42
904	1.564 1.276	R 161°23'		-4°20'	"
901	3.91	L 179°30'		-	-
902	4.20			-	-
903	1.462 1.378	L 89°44'		+25°30'	1.42
900	1.481 1.3585	L 29°40'		+2°10'	1.42
At ΔL		0°00' NG			
Δ G	1.562 1.278	0°0'	S 45°30' W	-20'	1.42
Δ M	1.553 1.287	L 161°57'	N 63° E	+4°22'	"
139	2.783 2.053	R 172°24'		+2°35'	2.42
Δ N	1.584 1.256	R 170°54'	N 36°15' E	+3°40'	1.42
910	1.459 1.381	R 179°18'		+1°50'	"
911	1.775 1.365	L 176°35'		+7°40'	"
912	1.50 1.34	L 146°8'		+5°30'	"
916	1.517 1.323	L 141°19'		+9°25'	"
917	1.53 1.349	L 136°13'		+7°	"
913	1.491 1.349	L 138°35'		+2°	"
914	1.489 1.351	L 134°20'		-1°	"
907	1.478 1.362	L 127°30'		-45'	"
908	1.503 1.337	L 118°50'		-30'	"
915	1.52 1.32	L 123°30'		-2°30'	"

for elev of 907 USE G
 " " of 901 " "
 " " of 902 " "
 " " of 900 " "
 " " of 913 " M
 " " of 910 " M



(73)

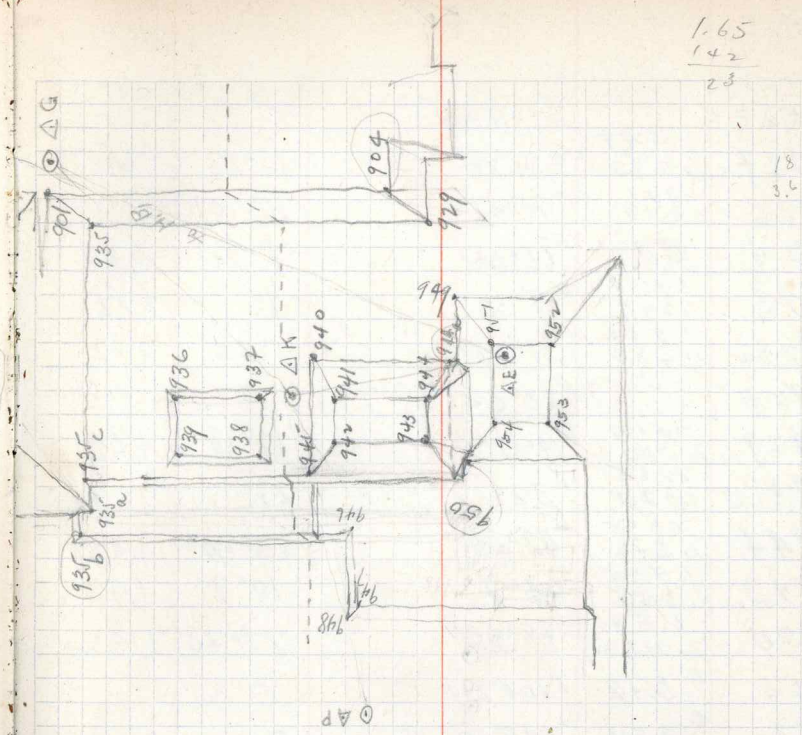
DATA		0° ONG			
918	2.62 2.42	104°20'		-2°15'	2.52
909	1.435 1.315	104°41'		+1°45'	1.42
904		57°20'			
905	1.96 1.68	57°		-1°25'	1.82
906	1.549 1.291	44°33'		-1°	1.42
901	1.5675 1.2785	7°50'		-1°20'	"

DATA		0° ONA			
ΔA	1.86 0.98	0°0'	N27°45'W	+2°0'	1.42
ΔL	1.5525 1.2875	89°13'	S63°30'W	-4°10'	1.42
Δ112	1.808 1.032	138°37'	S69°E	-12°39'	1.42
Δ95	1.708 1.072	R74°19'	N46°45'E	-6°10'	1.42
921	1.638 1.302	R85°22'		-11°45'	"
923	1.542 1.298	E138°36'		-23°25'	"
922	1.547 1.293	R153°18'		-23°52'	"
920	1.628 1.215	R138°34'		-17°30'	"
921	1.454 1.386	R171°38'		-15°40'	"
933	1.455 1.385	159°30'		+3°45'	"
916	1.474 1.366	125°5'		+8°0'	"
932	1.515 1.385	123°		+12°	"
931	1.45 1.39	99°		+4°30'	"
934	1.340	149°20'		-	-
934a	1.601 1.239	R6°4'		+40'	1.42

for elev of 933 use 932.

(74)

Atak		0°0'NG			
AG	1.562 1.278	0°0'	N31°45'W	+13°5'	1.42
AE	1.5415 1.2985 1.609	R 139°40'	S72°10'E	+10°0'	1.42
AD	1.231	133°58'	S14°W	-6°0'	1.42
929	1.498 1.342	R 101°8'		-1°45'	1.42
947	1.515 1.335	R 120°40'		-3°0'	1.42
941	1.455 1.384	R 162°37'		+18°30'	1.42
942	1.470 1.370	165°20'		+13°35'	1.42
945	1.465 1.375	142°		-3°0'	1.42
946	1.50 1.34	142°37'		-5°50'	1.42
935b	1.5215 1.3765	87°35'		-4°20'	1.42
935W	1.509 1.331	81°30'		-1°45'	1.42
935c	1.499 1.341	70°50'		+1°	1.42
939	1.4815 1.3585	61°		+1°	1.42
936	1.475 1.365	41°		+2°10'	1.42
937	2.25	70°			
940	2.85	R 134°			
935	1.509 1.331	1°50'		+7°50'	1.42
935d	1.55 1.29	40°15'		+19°45'	1.42
AtAE		0°0'NHB			
AHB	1.91 0.93	0°0'	N50°50'W	+2°20'	1.42
AG	1.66 1.18	0°11'	N50°40'W	+2°35'	1.42
AK	1.541 1.299	1°21'50'	N72°10'W	-10°10'	1.42
A112	1.85 0.99	R 115°5'	N75°10'E	-8°20'	1.42
920W	46	R 112°0'		-14°45'	1.42



1.65
1.42
23

18
3.5

SEE FIELD SKETCH
ALSO

for elev of 935 use K.

(75)

Δ at ΔE		$0^{\circ}0'N H, B$		
927	1.547 1.293	R 71°22'	-17°17'	1.42
926	1.311 0.929	R 71°42'	-10°10'	1.12
924	44.	R 66°30'	-7°21'	0.52
928	1.541 1.299	R 46°35'	-9°	1.42
928a	1.560 1.280	R 37°20'	+1°25'	1.42
90+	-	R 23°54'	-	-
929	1.500 1.340	R 19°21'	-17°20'	1.42
944a	1.165 1.075	L 32°	-27°	1.12
944	1.428 1.372	L 42°30'	-13°50'	1.42
943	1.485 1.355	L 64°7'	-10°9'	1.42
950	1.575 1.465	L 78°35'	-22°40'	1.52
954	L 3.72	L 104°20'	-	-
953	L 4.50	L 146°20'	-	-
952	L 2.60	R 157°45'	-	-
951	L 0.70	L 1°	-	-
955	1.59 1.26	R 125°30'	-33°30'	1.42
956	2.063 1.837	R 123°	-34°30'	1.95
957	0.775 0.275	R 139°15'	-30°	0.52
958	1.620 1.220	R 124°15'	-29°45'	1.42
Δ at ΔS		$0^{\circ}0'N H, B$		1.42
$\Delta H, B$	1.86 0.98	$0^{\circ}0'$ N 47°30'E	-12°55'	1.42
ΔD	1.675 1.165	R 20°37'	N 68°10'	-24°25'
ΔQ	1.558 1.282	L 56°31'	N 9°15'W	+20°50'
972	1.517 1.323	L 47°40'	+21°20'	"

924. 2 METERS from Corner. EAST.

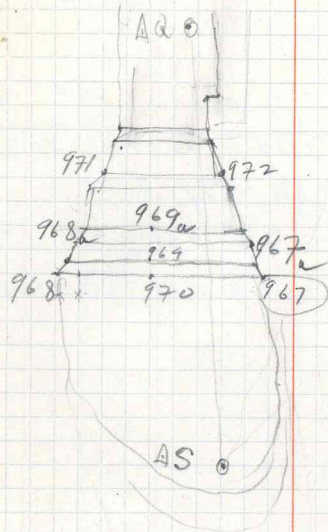
$$\begin{array}{r} 0.74 \\ 0.12 \\ \hline 2.2 \end{array}$$

$$\begin{array}{r} 151 \\ 142 \\ \hline 99 \end{array}$$

(76)

Not AS					
971	1.439 1.311	L 73°35'	+18°	1.42	
968 _w	1.499 1.347	L 80°5'	+14°35'	"	
969 _w	1.495 1.345	L 71°	+19°30'	"	
967 _w	1.478 1.362	L 41°10'	+17°10'	"	
969	1.468 1.372	L 70°	+14°30'	"	
968	1.479 1.361	L 87°45'	+8°40'	"	
970	1.461 1.379	L 74°	+8°30'	"	
967	1.453 1.387	L 30°20'	+5°0'	"	
981	1.52 1.32	R 92°30'	-24°	"	
978 _w	1.51 1.33	R 62°50'	-31°	"	
976	1.585 1.255	R 94°30'	-21°	"	
975	1.577 1.263	R 115°	-23°	"	
974	1.543 1.297	R 154°	-32°	"	
974 _a	1.555 1.285	R 149°	-35°	"	
981 _b	1.54 1.31	R 129°30'	-36°	"	
981	1.49 1.35	R 123°	-23°30'	"	
Not AS					
AD	1.788 1.172	0°0'ND		1.48	
AS	1.62 1.34	R 70°16'	S 19°30'E	-32°55'	1.48
			S 9°E	-20°53'	1.48
961					
Ac					
20h	1.621 1.337	L 134°48'	-2°25'	1.48	
973 _c	1.529 1.431	L 123°40'	+1°50'	"	

971, 972 top of [two lines of] terrace.
Reading for 968 2 METERS from corner, 968



978 top Not bottom
981_b = lower level.
981 top of Rock cliff

1.42
1.311
1.08
2.11

(77)

At A Q	1.73				
973 b	1.67		-120° 0'	1.70	
961	3.09	R 72° 41'	-	-	3.908
973	1.519	R 59°	-16° 35'	1.48	
973a	1.741				

True
 Shooting North
 0° on Mag North.
 Δ 4 by Vernier: S 5° 10' W -
 Polaris star N 8° 10' W - Vernier Reading

35.00 2465
 12.50 23.25
 1.75

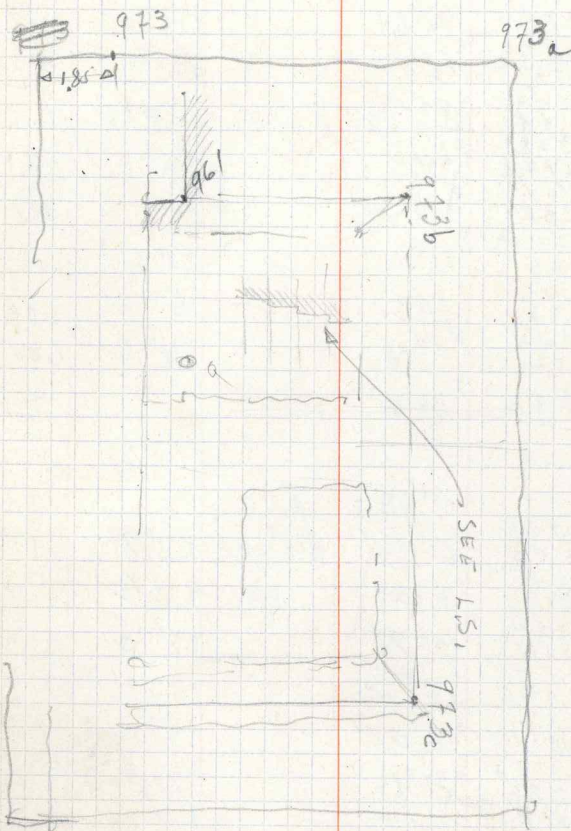
13.35
 267

26.16
 5280

973 is 185 from edge.

973a cant locate because of throw of
 Dint.

See L.S.



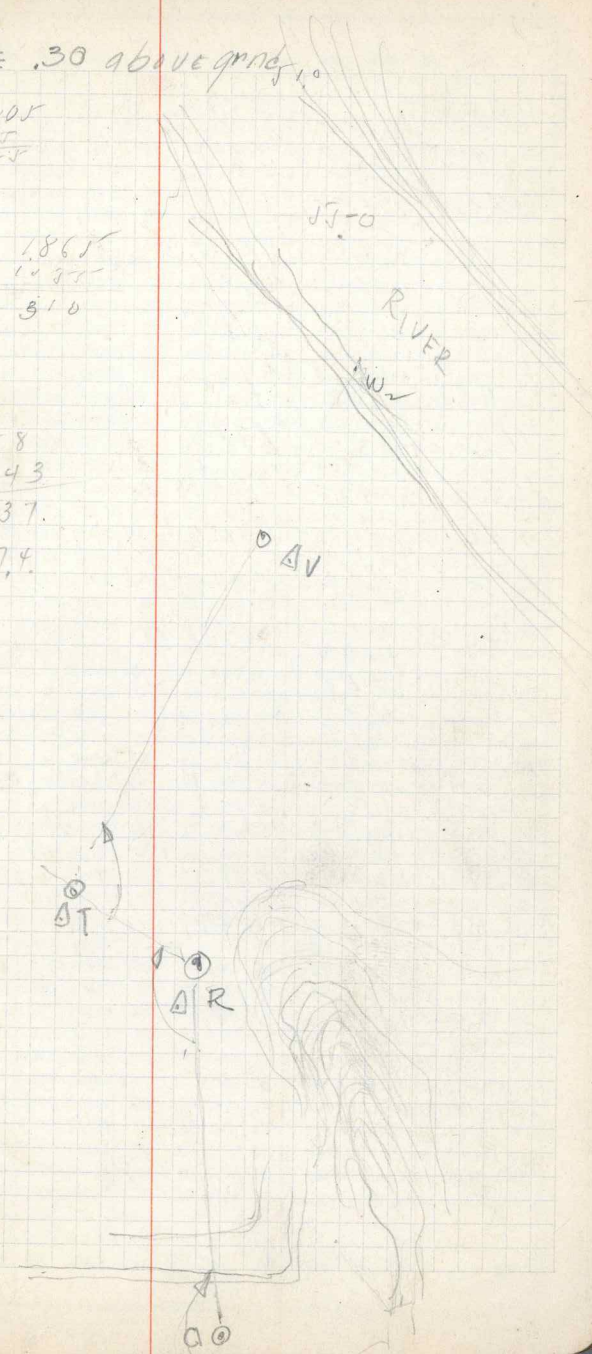
STA.	DIST	HOR ANG	VERT ANG	H.I.
⊠ at Δ D		0°0' NHB.	high STAKE MEAS. HI 1.25	
Δ H ₁ B	1.481 1.019	0°0'	N28°15'E +17'	1.25
Δ Q	62	107°49'	N79°45'W +33°15'	1.55
Δ S	16.75 1.165	140°25'	S67°45'W +24°30'	1.42
Δ R	1.525 0.925	R154°31'	S3°0'W -9°5'	1.25
Δ 11	51	62°44'	+17°50'	1.55
959	1.86 1.64	122°16'	+18°10'	1.75
960	2.66 2.24	83°22'	+18°41'	2.55
986	1.328 1.172	R58°	+6°	1.25
990	1.856 1.484	R46°30'	+6°	1.77
991	1.335 1.165	R41°10'	+1°30'	1.25
992	0.336 0.174	R26°	+0°15'	OK
993	1.323 1.177	R1°18'	0°0'	1.25
982	±3.87	R39°45'	-	-
⊠ at Δ HB.		0°0' NA		1.48
Δ A	1.938 1.032	0°0'	N28°30'E +2°8'	1.48
1030	1.6015 1.3185	5°38'	+1°15'	"
1047	1.648 1.3115	10°9'	+2°0'	"
1031	1.599 1.376	12°30'	+1°51'	"
1032	1.60 1.36	18°34'	+3°10'	"
1035	1.577 1.383	21°16'	+2°30'	"
1037	1.59 1.37	32°47'	+7°30'	"
1033	1.602 1.358	20°14'	+6°35'	"
1039	27.4	35°4'	+9°43'	0.58
1044	16.32 1.328	60°50'	+12°41'	1.48

STAKE .30 above ground

1.805
1.45
2.55

1.865
1.495
3.10

2.58
0.443
1.37
27.4



Δ at AHB	1.65	0°00' N.			
1043	1.31	68°		+17°	1.48
1044a	1.615	73°35'		+15°5'	1.48
1040	1.372	69°45'		+13°0'	"
1041	1.5785	68°		+11°	"
1042	1.397	64°		+8°30'	"
1042a	1.4085	72°		+6°	"
966	1.63	147°		+10°15'	"
966a	1.198	144°15'		+7°	1.38
1046	1.199	135°5'		+7°10'	"
962.6	1.075	134°54'		+14°10'	0.80
Δ at R	1.706	0°00' N			1.42
Δ D	1.154	0°0' N 3°E		+9°0'	"
Δ T	1.299	146°58' S 30°E		-12°25'	1.42
Δ at T	1.601	0°00' N R. N 30°W			
AR	1.359	0°0' N 30°W		+12°5'	1.48
AV	1.261	102°51' S 47°W		-19°5'	1.48
Δ at AV	1.698	0°00' N T			
AT	1.261	0°0' N 47°E		+19°5'	1.48
W ₂	1.195	179°30'		-22°20'	1.48

Natural Trigonometrical Ratios.

Angle.	Sine.	Tan.	Sec.	Cosec.	Cotg.	Cosin.	Angle.	Sine.	Tan.	Sec.	Cosec.	Cotg.	Cosin.
0°	0	0	1.	∞	∞	1.	0°	1.	0	0	∞	∞	0
10	.0029	.0029	343.8	343.8	1.	90	80	.1392	.1405	1.0098	7.185	7.115	.99027
20	.0058	.0058	171.9	171.9	.99998	40	70	.1421	.1435	1.0102	7.040	6.968	.98986
30	.0087	.0087	114.6	114.6	.99996	30	60	.1449	.1465	1.0107	6.900	6.827	.98944
40	.0116	.0116	85.94	85.94	.99993	20	50	.1478	.1495	1.0111	6.766	6.691	.98902
50	.0145	.0145	68.76	68.75	.99989	10	40	.1507	.1524	1.0115	6.636	6.561	.98858
1	.0175	.0175	57.30	57.29	.99985	89	30	.1536	.1554	1.0120	6.512	6.435	.98814
10	.0204	.0204	49.11	49.10	.99979	50	20	.1564	.1584	1.0125	6.394	6.314	.98769
20	.0233	.0233	42.98	42.96	.99973	40	10	.1593	.1614	1.0129	6.277	6.197	.98723
30	.0262	.0262	38.20	38.19	.99966	30	0	.1622	.1644	1.0134	6.166	6.084	.98676
40	.0291	.0291	34.38	34.37	.99958	20	80	.1650	.1673	1.0139	6.059	5.976	.98629
50	.0320	.0320	31.26	31.24	.99949	10	70	.1679	.1703	1.0144	5.955	5.871	.98580
2	.0349	.0349	28.65	28.64	.99939	88	60	.1708	.1733	1.0149	5.855	5.769	.98531
10	.0378	.0378	26.45	26.43	.99929	50	50	.1736	.1763	1.0154	5.759	5.671	.98481
20	.0407	.0407	24.56	24.54	.99917	40	40	.1765	.1793	1.0160	5.665	5.576	.98430
30	.0436	.0437	22.93	22.90	.99905	30	30	.1794	.1823	1.0165	5.575	5.485	.98378
40	.0465	.0466	21.49	21.47	.99892	20	20	.1822	.1853	1.0170	5.488	5.396	.98325
50	.0494	.0495	20.23	20.21	.99878	10	10	.1851	.1883	1.0176	5.403	5.309	.98272
3	.0523	.0524	19.11	19.08	.99863	87	0	.1880	.1914	1.0181	5.320	5.226	.98218
10	.0552	.0553	18.10	18.07	.99847	50	80	.1908	.1944	1.0187	5.241	5.145	.98163
20	.0581	.0582	17.20	17.17	.99831	40	70	.1937	.1974	1.0193	5.164	5.066	.98107
30	.0610	.0612	16.38	16.35	.99813	30	60	.1965	.2004	1.0199	5.089	4.989	.98050
40	.0640	.0641	15.64	15.60	.99795	20	50	.1994	.2035	1.0205	5.016	4.915	.97992
50	.0669	.0670	14.96	14.92	.99776	10	40	.2022	.2065	1.0211	4.945	4.843	.97934
4	.0698	.0699	14.34	14.30	.99756	86	30	.2051	.2095	1.0217	4.877	4.773	.97875
10	.0727	.0729	13.76	13.73	.99736	50	20	.2079	.2126	1.0223	4.810	4.705	.97815
20	.0756	.0758	13.23	13.20	.99714	40	10	.2108	.2156	1.0230	4.745	4.638	.97754
30	.0785	.0787	12.75	12.71	.99692	30	0	.2136	.2186	1.0236	4.682	4.574	.97692
40	.0814	.0816	12.29	12.25	.99668	20	80	.2164	.2217	1.0243	4.620	4.511	.97630
50	.0843	.0846	11.87	11.83	.99644	10	70	.2193	.2247	1.0249	4.560	4.449	.97566
5	.0872	.0875	11.47	11.43	.99619	85	60	.2221	.2278	1.0256	4.502	4.390	.97502
10	.0901	.0904	11.10	11.06	.99594	50	50	.2250	.2309	1.0263	4.445	4.331	.97437
20	.0929	.0934	10.76	10.71	.99567	40	40	.2278	.2339	1.0270	4.390	4.275	.97371
30	.0958	.0963	10.43	10.39	.99540	30	30	.2306	.2370	1.0277	4.336	4.219	.97304
40	.0987	.0992	10.13	10.08	.99511	20	20	.2334	.2401	1.0284	4.284	4.165	.97237
50	.1016	.1022	9.839	9.788	.99482	10	10	.2363	.2432	1.0291	4.232	4.113	.97169
6	.1045	.1051	9.567	9.514	.99452	84	0	.2391	.2462	1.0299	4.182	4.061	.97100
10	.1074	.1080	9.309	9.255	.99421	50	80	.2419	.2493	1.0306	4.133	4.011	.97030
20	.1103	.1110	9.065	9.010	.99390	40	70	.2447	.2524	1.0314	4.086	3.962	.96959
30	.1132	.1139	8.834	8.777	.99357	30	60	.2476	.2555	1.0321	4.039	3.914	.96887
40	.1161	.1169	8.614	8.556	.99324	20	50	.2504	.2586	1.0329	3.994	3.867	.96815
50	.1190	.1198	8.405	8.345	.99290	10	40	.2532	.2617	1.0337	3.949	3.821	.96742
7	.1219	.1228	8.206	8.144	.99255	83	30	.2560	.2648	1.0345	3.906	3.776	.96667
10	.1248	.1257	8.016	7.953	.99219	50	20	.2588	.2679	1.0353	3.864	3.732	.96593
20	.1276	.1287	7.834	7.770	.99182	40	10	.2616	.2711	1.0361	3.822	3.689	.96517
30	.1305	.1317	7.661	7.596	.99144	30	0	.2644	.2742	1.0369	3.782	3.647	.96440
40	.1334	.1346	7.496	7.429	.99106	20	80	.2672	.2773	1.0377	3.742	3.606	.96363
50	.1363	.1376	7.337	7.269	.99067	10	70	.2700	.2805	1.0386	3.703	3.566	.96285
						82	60	.2728	.2836	1.0394	3.665	3.526	.96206
							50						

