

Book #3 : See Small Pocked + Loose - Long Books for prior notes. - 1 -
LS Notes (some dictated to me)

Monday, March 30, 1931

Working with six men, operation W-2. Stopped work on trench in Court #1 per instructions of J.A.M. With two men clearing a sample of main stairway Plaza to Structure #1 opposite door #13 and pillars to East of it. Two more men clearing sample section up stairway at north of Court #1 opposite door #6 and pillars to West of it. This position selected to cover the stairway and a little to the East of its apparent side. Two and one man finishing clearing of Room C and following plaster floor to edge of structure for a section between pillars, which has heretofore been difficult to establish.

Worked two men the first hour completely clearing of stairway opposite door #15. Recovered piece of stone ornament at base of this dig about 4.00 and 2.00 below S edge of structure #1 (W-2-). apparently possibly an ear ornament. This is the first undoubted stone ornament on the South side of structure #1



P.M. Working with four men - one ill. apparently nothing under floor of Room C, but the floor is soft and easy to break through and in Room A only a metre away or Room D the floor was extremely hard below the plaster. See sketch to be made for ornament and composition. Also few or not feet sherd in the floor in small area.

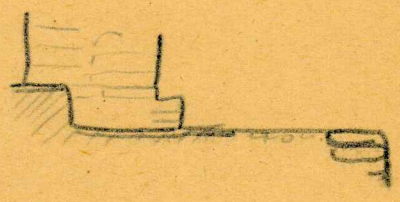
It seems apparent that all the pillars on the South side and probably the north side rest on a floor or platform which projects about .10 beyond. Outside door #16 this drops about .30 to a plaster floor entirely outside the building - to be investigated further. On the South side judging by this, and the angle of stairs so far identified below door #15 there was probably a plaster covered passageway or landing about 1.50 to 2.00 wide running along the outside of the structure and about .30 below its floor level at the outside.

This P.M. Luis with one man carried court trench up to door #5, and found a straight drop of .30 to a stone step or possibly stone border at plaza floor level. Found pieces of plain plaster on this step. To-day we finished clearing main plaza - structure, stairway above mentioned without moving any stones. Believe staircase hypothesis is inevitable though not certain. I have cleared path up stairway and found floor of structure #2 above, but am leaving rubble over upper part of stairway as protection. M.C.S. and I ran horizontal lines in plaza trench in preparation for drawing.

Mar. 31

6 Men. - working in pairs. Carried section of stairway, Plaza to Structure I, W. group, successfully to plaza floor by spreading out at base, to E. First time able to do this, and it is very clearly a stairway there. Trying to ~~be~~ connect this section with structure - different. Have established however:

Poor 15 encloses a set-back step:



Good Plaster floor at bottom of steps runs around corner to E - but can't carry it far out to south. This level drops apparently to another very broad step or platform - does not establish as yet.

Carried work at N of Court, up - nearly cleared to 5 floor, back to wall of structure 12. Carried this to west at higher level looking for set-back (niche) for other visible side - the niche is narrow and not reached yet: but the ^{back} wall to left of my trench (and not in it, shows a curious regular level top, with more ~~detail~~ of the ceiling fallen away above it - and as is - must figure this out.

Carried Court track up to Structure I.

Widened dig around Poor I - the inclined plaster-covered step continues indefinitely. Just saw time trying to get out large mass of sherd & stone immediately to W of doorway, correspond to the other side. - few bricks the only result.

Working in P. N. on Middle stairs N of Court, as well as higher up. (Shower to day).

13. Inspected as Chops Jambel - not with enough to form central doorway at bottom. Feb. 9. 1. 8. 0. 2. other small plasters.



April 1 ^{6 Men} Morley's party here - ~~trying~~ says glyphs on new lintel beautiful. The initial series much earlier than style of carving - should be other lintels carrying hole to contemporaneous one.

Trying to connect stairway to Plaza with St. I - third attempt failed.

Finished stairway at N. of Court - not so perfect - found E end of niches in brick work of Structure II - looking for roof (platform) level above, and the Court level above that.

No lunch again - headache - used the hall.

Apr. 2 Started digging doorway, corresponding structure on Court 2; also at N. S. of Court. Started sinking pit in Court 3 near to some circular stone, center of court. Found 2 other fragments of base of Stela 43, identified by Morley. Liked to go all dates of stela & altar from Morley. ^{him set it up.}

Morley's party: Mrs. M., her father, Ruppert, change of excavation at Chichen: Bowles, architect at Chichen, Fr. Rife, good & J. of Chicago, but going to St. Fe.

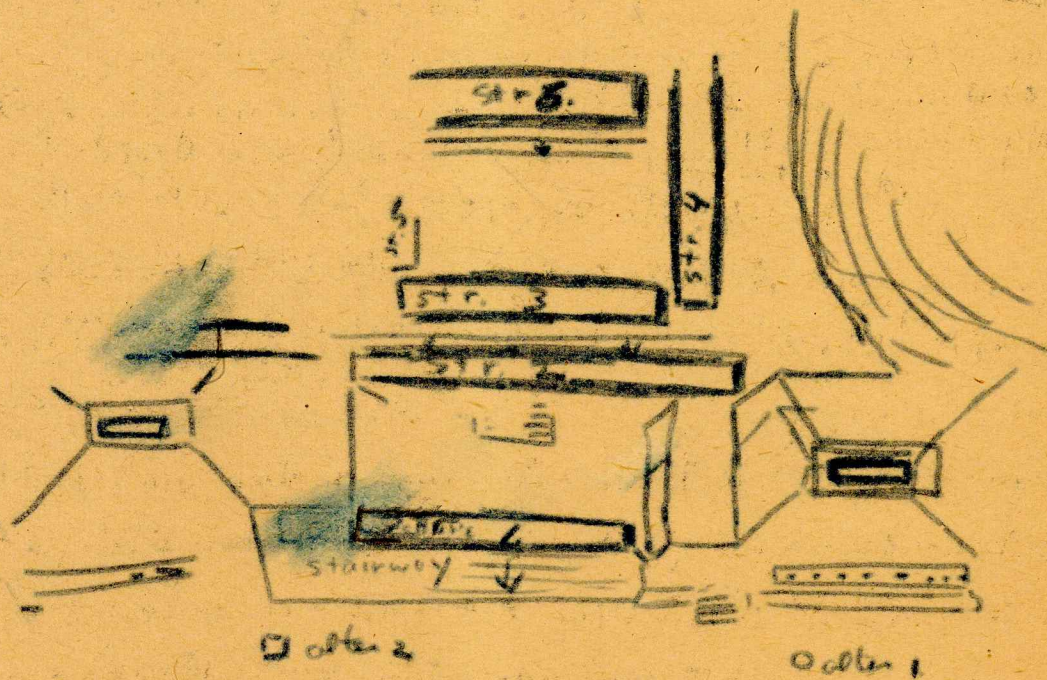
Apr. 3 - Good Fri - no work for men. Explored to end of known City ^{+ S.} Many mounds behind S groups & to S, E of trail - all low & peculiar confusion - somewhat similar to those at E end of Campanileto Plaza, but none so high, no courts.

One looks like construction (wall & cap stone) at center, (animal hole), though very broad and flat.

- House platform?
- Burial vaults?
- D. M. in work-room with M. C. L.

Apr. 4th Tried to get instructions. Chief assumed I would go ahead on
a whim to get in only a section but plan - supposed to be done
in a month or a season - O.K. idea of digging out corners
of main structures only - but section first.

Finished down way back to wall, Structure 3, A.M. - See Sketch Map
Continuing on way in Str 6
Starting back in at Str 5, which may be imaginary



April 6


Men, 3 gangs > each, working under Peggy, Cowd 2, W Group, benches in Structures 5, 6, + inside corner of 3+4. (See page ahead)

Yesterday:

Showered chief alleged grave mound, S.E. of Big tree & S. group - one man along - he dug awhile - pulled out part of jaw, human - decided it should work it carefully, but without trenching from outside and without a man.

I explored while they were digging - strayed back and up the hill from this site - more terracing & mounds - a long steep slope - then a large mound on terrace (feet high up) one side really a quadrangular pyramid - which goes down on the other side (forming hill) by steps in good condition. Mound about size of aropolis courts.

~~Today~~ On way home in P.M. explored back of acropolis further:

2 false pyramids along ravine which separates them from the good stair way toward the river - they rise one behind the other from the platform to base (follow old trail to ruins, where it rises on the terrace a little).  - with structure on top - whole business much lower than "blaze" at head of "stair way".

Today 7

Started alone on 'grave' at m. uncovered rest of mound - pretty heavy cap stones - mound fallen. Dug a little, also clearing fallen debris (from my uncovering mound - and picked another piece of jaw (left side) with molar, pre-molar & 2 incisors) - 4 teeth - about middle, ~~2~~ 1.50 pm S. end.


April 7 contd.

P.M. Came to vault by going over hill ± behind Sta 42 - hill of a high flat-topped long hill. - False pyramids descending to trail on other side - structures on both sides trail, especially left, all the way down to S group. Believe something like this:



Vault - Hanging - card just the Chimp bones in situ - found thus a m. f. protection. Then on small tubular stones at angle on either side in the purple dirt. At N. end - more stones at about 90 to 100' depth - at 45' bird bones - spread out flat - few cms. from N wall. also

large, sharp, rain, black bowl. Stones more frequent, larger, and softer to the general level. Another bird lay bone 10' lower,

human skeleton  Pretty clear mixture of earth + stones at 1.00' (still the N. 3rd front)

That flat stone 30 x 20 in center, 12.5' from N wall, about 0' flat, with long table on edge, in center. Slanting up + S to E wall - every appearance of having fallen. Under the flat stone - skull frequent + lay bone.

April 8 with men on road 2 till 9:00 - took till 10 to go to zone, via S group + transverse valley. Believe false pyramids on N side of latter.

April 8 - cont'd

Carrying down S. end & middle of vault - Much more of the purple soil, especially against S. end wall - it is always granular, and the color is a coating on the stiff dark brown "greasy" soil. - worms? ^{bursted}

Two finger bones and rear of left lower jaw ^{bursted} knifed out somewhere between S end & 50 north of it; level about .75 down.

Soil very tough & almost impossible not to bring a out in clods.

The larger finger bone undoubtedly from center, 50 N of S end.

Two obsidian chips, tiny pieces of bone in the greasy soil, very hard.

Very heavily holed with small irregular stones at 1.00 down, S end.

(corresponding to N. end). Blue soil very rich with S.E. corner - it is always ~~crumbly~~ crumbly.

Bottom drops under the purple at S.E. corner (same way as at N.

I wonder when it will fall - seems to be hollow underneath.

Bone, W. end (small long-bone as ^{with sharp} among the stones.

More bone near center - always fragmentary - about 1.00 level and between two ceiling stones on E side thus



P.M. - Two white stones come 0.3, W group, S.E. corner.



Increase, unfinished, very crude, re-worked for use here. (W-2-20)

April 1

- 9 -


On Cond 2 to start men, on east part temple at chief's request - Then to vault pass, about 8:30.

Finger or toe (possibly hind?) bone ≈ 90 , $1.40 S + .20 W$. - in hat-packed "greasy soil".
(- using N end & E end as bases for co-ordinates.)

Very fragments of bone ≈ 131 , $1.40 S$, $35 W$. among stones & lower soil.

Piece of a rib (.037 long) in lower dirt from the S. end, about same level.

Any pits & shovel work is ~~sure~~ sure to turn out one or two bones - they are isolated and scattered all over.

.50 S, .20 W, about same level as skull (low level of earth) - 
An increase in number & size of stones, especially small pieces, is noticeable at between 1.00 & -1.10 or so, from S to head or N. (the rest not in line).

Part of Pelvis & rd femur apparently in position. Piece of broad bone knifed out somewhere between pelvis & head - also small pieces of rib in this region.

Piece of rib $\approx 1.40 S$, $.05 W$. same level as pelvis & just above opposite to other smaller piece nearby.

Finger bone (E) ≈ 5.65 , $W.02$

Shard piece of rib (.05 or .05) right against W. wall, $1.30 S$, $h = -1.10$

Small bone (F) stuck against W. wall, $1.80 S$, $h = -1.10$

Finger bone (?) (G), $h = -1.10$, in little angle at S.W. corner, S of S wall, soft dirt here.

Foot bone (?) (H) broken & buried out long piece - about $1.70 S$, $35 N$, $h = 1.15 \pm$
(and find the rest.)

I - Bone head? - cut both ends - in lower dirt, $1.75 S$, $.18 W$, $h = 1.10$

brushing loose dirt out
This must be app. position

- AD 1.10 L, air is fairly stiff all over vault - which is wide at S.
- J - also cut both ends - turns up some position & conditions as I
- K - Finger or toe bone - ~~small~~ against N wall, center, h = 1.19
- L - #1 - lower ends close to N end.
- P 10 of rib - NW corner, kept out. Another
- Another finger or toe bone, in position .02 S, 48 W, pointing down
- M P 10 of cut or broken rib () .20 S, 60 W, h = 1.14. This is typical of many pieces of rib, occurring all over, ±.
- Another, same level, against W wall, 18 S. Many were against the W wall.
- Still another longer piece in this corner, being, upon position.
- Cloned main bones by 5.20 - a rebound almost certainly.

April 10, 1931 - Friday

Small stones, broken pieces of skull lie in West part of skull as in a cup. Under portions of skull, broken upper jaw and, apparently, a large piece of the cranium also, lie immediately to the east. Head probably lay up side down the palate, with two teeth at the east of the mass, being up side down. Head has broken badly, crushed.

N - Finger bone? projecting from inner side few cms. east of femur. Pelvis like everything else rests directly on stone. Badly crushed originally and impossible to get out whole. Lower femur was articulated with it. No signs of the other.

half beneath it. Skull likewise rests on closely packed stones, of some size. It is evident that the stones that cover and enclose the skeleton did not fall from the roof after the burial. Very difficult digging in stiff dirt and stones, some of them as much as 20 across. Fragments of rib and small vertebrae knifed out next to wall a little S.E. of skull and .10 below it.

O - end of wrist bone & fresh break

Skull found removed. Right orbit practically gone. Left practically complete but badly damaged in getting out. Many face bones already broken, record possibly a reconstruction can be made. Forehead much flattened, super orbital ridges absent, head long and narrow. Distance from occiput to front on median line opposite orbits .15, rough measurement and occiput not complete.

After removal of skull and clearing to greater depth North of it three vertebrae appeared at slight angle but more or less level about .04 to .05 apart. In other words their sides and not their faces are toward each other.

P - Right in N.W. corner with fragment of rib

D - Hand finger or toe bones etc probably a or vertebrae from 1.30 South immediately left to


West Wall H = -1.15⁻. Packed in among stones and pretty stiff dirt. No signs of animals here.

R.A. very tiny finger and tool bones 1.30 South 75⁻E
2.15 - 1.15

S Small finger bones 1.15⁻ South, very close to W Wall, ~~red~~ ^{red} feet sturdy, near by. ~~hand~~ ^{hand} S.

T-1 + T-2 - foot bones & base of skull (?) - extreme SW corner, h - 1.10 ± about .10 from each wall (incl. considering "niche" - 7

Thick with close - red bed irregularly shaped & placed stones all over bottom under skeleton. Nothing under - 1.15⁻.

Base of group of larger rough stones, close red  class .20 to .30 with occasional pebbles & several pieces of "stone cotton". red burned clay, am. abundant with possible exception of U

Belane, noted 0?


V - Bone - possibly from within "floor" - dir to North about center.

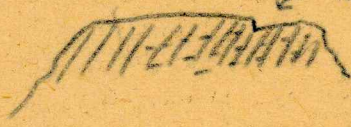
Dirt tended to be softer near edges, especially W side: the "purple" was always lumpy & soft and was undoubtedly due to worms. Dirt was stiff & hard in general, however, clear to & around the stones which covered and underlay the skeleton. Those underneath were certainly larger - stones progressively larger from top to bottom.

Pebbles were sporadic & certainly fortuitous.

April 16, 1931 W - Medium sized vertebrae, two subfragments with a few "niche" found in first clearing. Vertebrae is actually South of main South wall.

Cephalon Rain.

Boys clearing line of sight to and on vault structure, S.E. section, also cleared surface to N of vault + started in on side to N. This result: there are not three rows of vaults as I thought. I cleared line of sight up the ~~hill~~  hill N. 25° E ± + encountered the vault above - explored to W of vault - peculiar roundish mounds a little higher, N.W. - ascended hill ± behind vault, led on by flat sheds etc. - many mounds, irregular, higher up - with large stones in evidence - one should be turned over on a chance. Ascended the mountain tops still above - high boulders - peculiar shapes - possibly slabs remained from here?

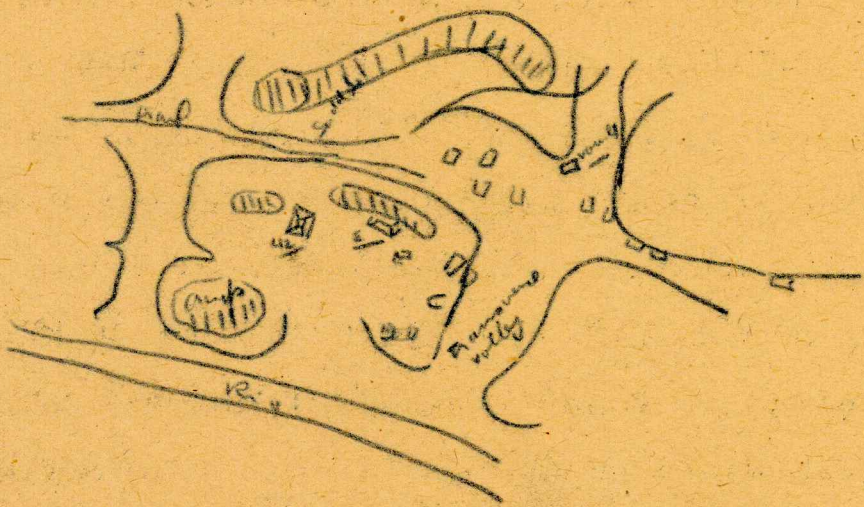
depos in  several benches in limestone shales, which could there occur by natural erosion?

Ascended as nearly N 65° W as I could - mounds at bottom - a narrow valley bottom, not level - running into Transverse trail very close, at point opp. pass to C. group I think - to Chicken Trees played here - to be checked up. Ascended trail a good distance to the big Carbo tree. I had without doubt been on the high hill to the ^E of trail with such steep sides, which closes in to form the saddle crossed by the trail. The vault structure is therefore part of a mass of mounds surrounded by this hill on the E + ~~the~~ the main runs on the W, the saddle on the N - ascending out into the transverse valley (prolonged / projected further E than Water shows) on the S. The transverse valley bounded by another hill, with mounds clear to it + beyond on the trail pass. Sketch to be made

P.M. Cleared bones
(after hours)

April 12 Sunday

Explored Campamento valley, NE of trail - found 4 or 5 look bearings, made sketch maps, including former observations, but they are not to scale. General lay-out must be something like this:

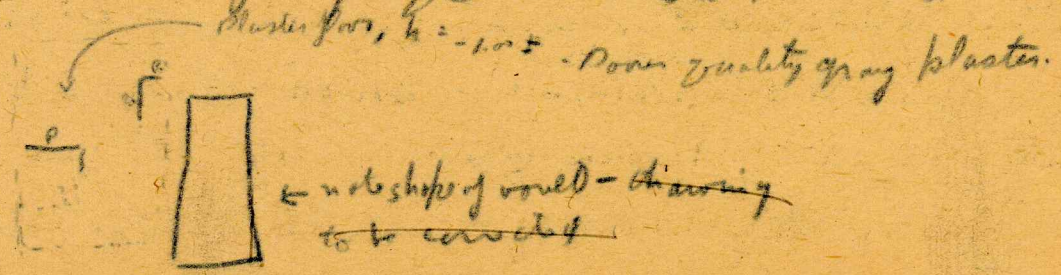


P.M. Took Mrs Weger over camp site. Worked up notes, made sketch maps etc.

April 13

Six men at Vault: walk to N, probably with slip ^{and rubble}
Many sheds, 2 archaic figurines (4) ^{from the rubble} close to wall 1.00 or 2.00 W of vault project 4.

Digging to W of vault - through small rubble to very large stones - and note out anything as yet - occasional sheds.



Painted nothing from all bore holes.

Explored about N 65° E from road - coming out by a 1/20 turn of road
50 m. ad by tree on platform E side of trail, opp. side of 3 S groups
pyramids. - + pushed up against hill hereabouts. Many, some
very high platforms rising in succession vs the hill along most of
this line. - one very long one, ending at some termination (had
in from trail) is very suspicious - possibly a colonnade - almost
certainly a structure.



April 14

Continuation of with exc. N+S of road, also clearing

C.S. May
#9



A = small piece of bone - 70 ± V marked

Less more small fragments of bone in excavation
of burial # no 1 about 80 below surface

A pretty clean piece of burned clay with groove from the floor E of
burial #1 - wooden staff rest - plan at S with - left dark - black
black, but no charcoal.

Wednesday April 15, 1931

Section of vault No. 1. North end: stones (rubble) continue down to about -1.45 where they give way to soft brown soil. To be investigated further.

Having a hell of a time. Certainly no more vaults are to be expected. Everything is very difficult to follow. There seems to be an old perhaps original construction with a floor at -1.15. This occurs on both sides of the vault and probably north of it. There is evidence of secondary construction on the other than the vault which seems to go through it, and that the whole was filled up with rubble but with a compact mass of stone, earth and many ~~of~~ shells. Low walls were then constructed on this, possibly they were fairly high to account for rubble to north of structure. ~~had~~ most of this is a steep ~~slope~~ and there is no mass of basalt on the south (S) of the structure. Certainly could have been high. Seem to have stone foundation walls about .30 high, no more, placed on top of the older structures. Filled up. A bit hollow to E of ~~found~~ confirms this - though to W one of the peculiar "bumps" in the surface, 2.50 + W of pool. One human tooth (molar?) from this today about 6:00

(over)

April 16



- about -.45, in fill
 3.00H of w wall of vessel, 150 Sg
 n. wall, old, min structure.

Contains something - some progress?
 Broken structure of the lens - same general area.



flat stones
 roughly level
 about .70-

removed a - other holes included this way.

More below - a bit hollow between
 Underlain by fine soft dirt for a slight depth below the long tables lies
 regularly placed E & W - though not squared stones - they have been
 leveled in the dirt... leaving a center.

- Hand in - soft dirt under stones - clearing all around

- Underdirt piece of burned red clay which rested on sticks from near
 NE corner of vessel, about - 1.5' cutting E & N from vessel - 5 smooth on
 one side, with shading



dash of the hole .015 x .02

Similar basis for Room A, dia .025, smooth back, no striations

But no charcoal - these must be bones from burned houses elsewhere - or perhaps never burned - quite soft. No pollen here, too rare.

Archaeo type figures = above slabs of grave #2 (loose back work)




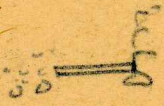
Digging in from S toward grave #1 - hand shed near surface. (not yellow + red vegetation same here - blades (or straw) in red on yellow slips - dull pink dirt



Burial #2

Lies under pile of slabs set crosswise across skeleton (presumably) several deep at center only one large slab at south end apparently chipped. Roughly semicircular - see sketch map #9. The other slabs are irregular. Thicknesses varying from .07 to .12. A new floor is observable at edge of cut 1.00 West of West side of southerly slab. Height -.26 of the hand so far uncovered is at - 1.07. Top of South slab is 1.90 South of Plaster Wall running East and West. Between the stones and the skeleton, was very soft brown earth, which did not wear either

to the east or west. At this level on the east were large stones perhaps part of a wall. On the West mixture of small stones and dark purplish earth (fill). Best to check on the remaining good stone but probably the grave was like this - lookend "N":

center.  unmarked: 
apparently near center: but toward head plenty of small stones directly on the skeleton. - toward feet - ?? as yet.

See sheet Map #9 notes: ~~find~~ The grave heads against E + W wall (odd bed plaster) - to E + W of D - Perhaps they broke this for the head of grave. The plaster immediately to W of grave was on the inside of a stone built out by forms - a plaster remaining all over is rough & broken. Check this up.

check

Bones are as soft as dirt - which is in places harder. Are trying to unbind in position.

Making cut opp. vault #1 from S - cleared stair way also, also, not very clear.

Sending vault #1 + Room A down - "A" under low by bottom. Poured slabs from deep under vault, with plenty of clay, clear in S.W. corner up light yellow soil.

April 17

Red, black & yellow slip sherd from cut through stairs to S. not more than 50 under - slabs?




W: red white-yellow slip.


teeth with it.

Broken obsidian flake knife in loose dirt from the burial. On removing the southern stone I find the line of small stones still remaining on West side of skeleton continued to a greater height and form a little wall supporting the slab. The tops of the stone are perfectly level. They form roughly an oval end. They are not quite continuous part of the slab being supported by tough dirt and flakes. A spider had his home in the 'SW' corner which is hollow and full of leaves. Two roots of the tree run into this part under the slab. Another large root ran N & S over the right hand and two fragments of femur nearby and under the left elbow.

Stones over the bones at feet as well as head

 ornament - 1.355 + .05 W near O to long bone. (between this & Feb 25)

Low bone up side down

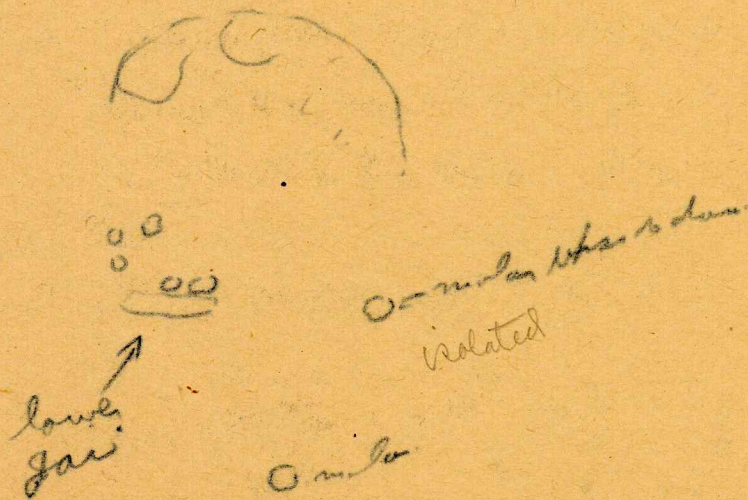
Small spiral shell +  - cross section of spiral shell (.06 or 7 dia) - one 20 10 bone

Continuing clearing under South Slab - bones here in very bad condition very fragmentary. There was undoubtedly here as elsewhere very uneven and now broken plaster floor on which the bones lie directly. Bones continue to very end of vault.

Most southerly piece is not a toe-bone but a very thin sliver 4 less than a millimeter in thickness of a bone of some size.

Fourth tooth green stone relay 1.37 S to E between center and East long bone.

The supposed plaster floor in spots is hollow. The body was either articulated or laid out in semblance on its back. The head is badly crushed and is impossible to remove the jaw intact and the teeth are curiously spread about.



Lower The lower jaw rests horizontal with chin due "West" green beads close together directly under center of jaw, also several shell beads, same position. If more show up it was a necklace.

Impossible to take out jaw which I am cutting up. Beads are running crosscutly along the South side of lower jaw, both shell and green. Head into

Cannot be found either West or East of the grave
To the north the rear or inside surface of a plaster
wall faces the grave and also the area to the
West. For cross-section, see sketch. Can't find
this red floor.



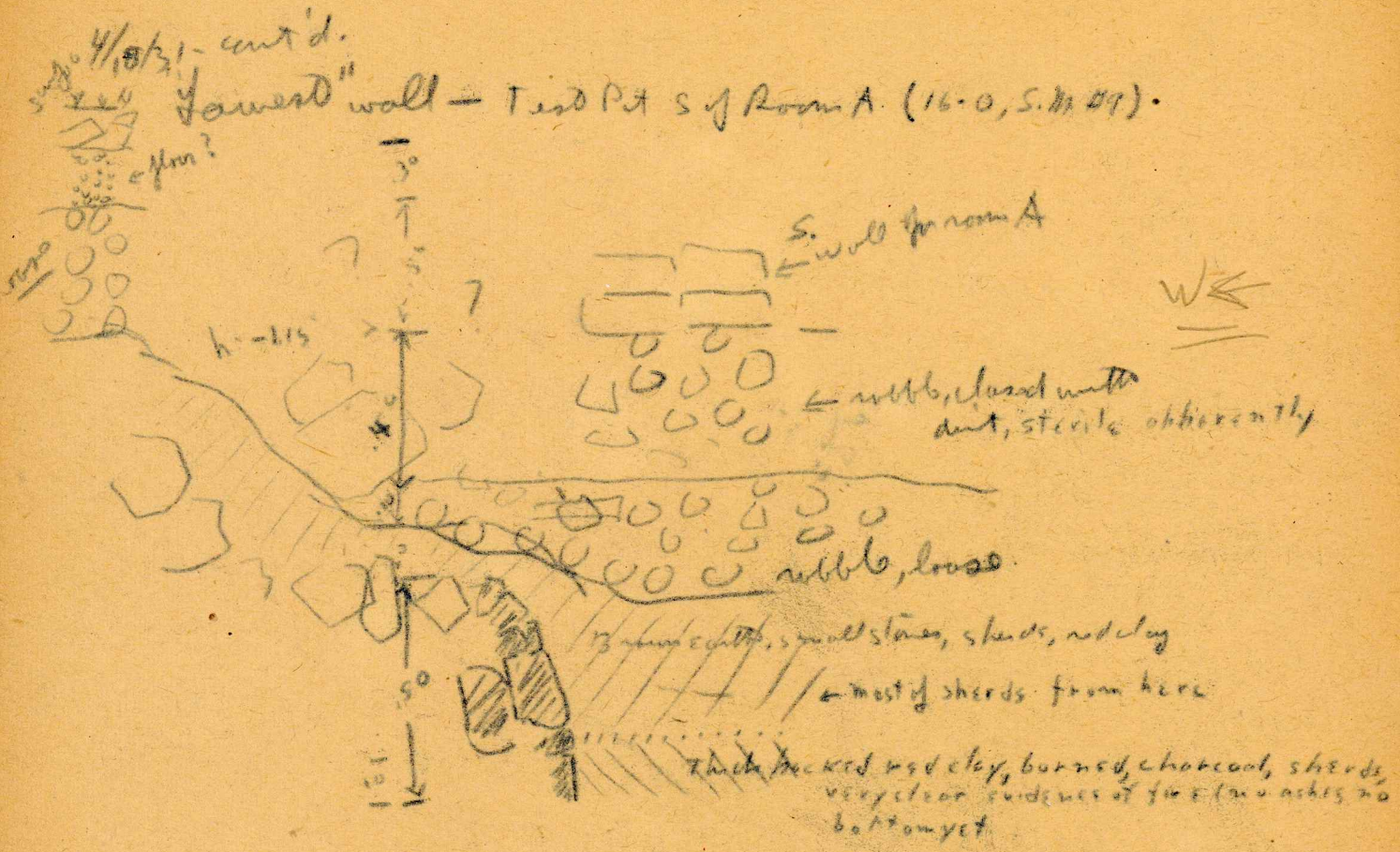
6.10 from (E) E
h = 140
- 51
h = -89

- Pulled out of center of N wall by E frame -
rough stones all around it. ^{on inside} Center of
earthed position .40 S of N pier of outer
N wall, @ h. - .89.
Reared fragment, obviously.

Pond on wall = 6.28 from (E)
6.10 from D

Sheets from highest floor (W) - - .26 ± - no painted apparently pretty
course.

Test Pit S 22 E 2750 from SE corner Vault #1
Surface bar = 2.93
- 51
- 242



4/14/31 Plate B and C

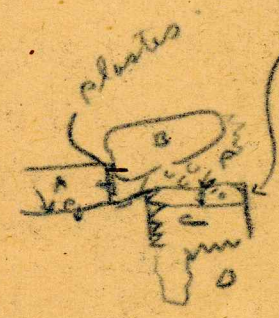
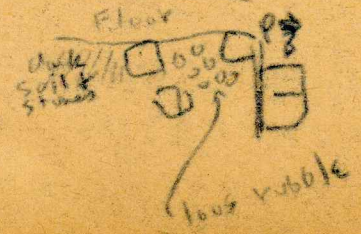


Plate A was later than B = remnant of plaster between them (thick, black inside) facing toward A. It rests on plaster floor. B better than C = built against the plaster of C, which clings to it were it was pulled out for some ground better than all three because had numerous spots in C, with some plaster from C still remaining on A. The floor was to meet both C + A-B this wall + is contemporary with them. ∴ built is better than this floor - + all this construction.

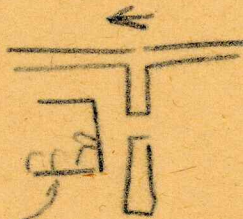
Believe C is remnant of a rubble filled door wall about .75 thickness remaining in W. 100 of rough stone in area D - a section to W looks like it



- 26 -

Monday April 20. 1931

Trying to follow top structure ~~to~~ W of main dig:



Slots here only - road is full of rubble + humus - when was a platform. Much disturbed by 2 large trees.

Figurines from well in or on heavy N. wall. - Moya head, hollow fragments, & capped figure (torso) - a beauty.

Trying to catch lowered wall from S - much difficulty. A slow day.

Made contour sections of natural surface.

Level main mound is - 2.46

Level bottom of N. wall is - 2.03

∴ Whole structure is artificial, including the large-stone complex, which must be a structure.

A. Bliss wall descends below 2.15 level - Fupv structure has N through rubble between D and N wall.

April 21

Burial #3 "N"

"T" shape



See sketch this site - One large roughly squared (corner broken) slab over north end. This had fallen south, + W, due probably to sinking of N half of west wall (of small rough stones, similar to #2). As a result, both pieces lay directly on bones, a few fragments not bearing to them when lifted, many being in full view when they were lifted. Some stones, + soft earth over bones to E - similar to #2. ∴ probably these had fallen + washed in from side walls in each case.

The large slab probably v. used, as can be fit the missing pieces, + s.w. corner is not at angle what the N ones are.

Long bones a (not uncovered - yes, but came out from the E) lower jaw ab, skull + probably upper jaw ab c. Two or one individual?

The large slab extends under the center upper structure wall to the middle, under the inside of the N end of grave wall .32 under it. The big slab (if whole grave was covered with rubble and old small floor rubble. Also the E-W arm of the T (old stones) extends about .30 under the N-S upper structure wall. ∴ very probable that grave ant-dates these structures.

Took photos of grave with wall over slab + after removing wall. The E-W arm of upper wall ~~was~~ was built against the EW, which is undisturbed by its removal.

Carried N + S trenches through black clay with charcoal, shreds, to natural red. The black clay (examined only in S trench so far) is very tough + pure, contained few bone fragments well preserved. To be studied + drawn.

Started SE 2 - up hill. - large table fallen, many shreds near surface, no painted as yet.

Figures head with hand claws, arms, abdomen, bones (animal?) well preserved, bird figures.

Dug under Burial #2 - plaster on stones + earth, ~~small~~ stones larger below, resting on "red floor" (-1.15 ±) which runs under wall to N apparently.

Sank pit in passage N of latter, opp grave - obvious floor (small rubble, ~~plaster~~ lime coated) as observed before at about -1.10.

This goes down to pure rubble, with no apparent sign of the -1.15 floor - to be investigated further.

From S. trench, low (but above black clay) - fragments of gray plaster, chunks, with red paint on one surface.

Floor of upper structure slopes a bit to west, from C ± - but this may be illusion - plaster does not show in this part.

Birds are worse again.

(mm)

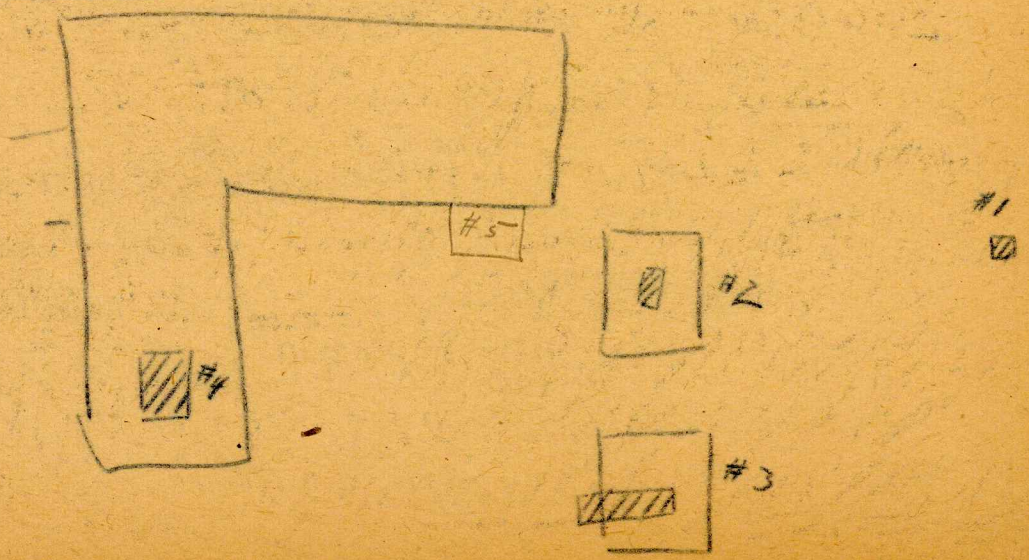
Wednesday April 22, 1931

Burial # 3

The East skeleton (SE-1-30) being covered by slabs, a little fallen, is in a much better state of preservation than the West skeleton (SE-1-31) except the cranium which is completely gone and which extended to the west chamber of the grave. Limbs probably destroyed all the feet - at least one tooth and fragment of lower jaw rest on the lower jaw. Back bone is apparently complete and in position. Skeleton obviously that of a child. It lies flat on its back, and bones are jammed right up against the sides of the grave which is very narrow. See sketch and photographs to be made. Obviously an articulated burial. Bones fragile but fairly hard. Nothing but dirt and an occasional small stone on the bones.

Saturday April 25, 1931

West Pits:



Skull's body was jammed tightly against each side of the grave. Side stones rough and irregular, one layer resting on soft dirt. Both femurs articulated with pelvis. Right finger bones actually under side stones. Bones complete, but very soft (it rained two days on these skeletons) Ends of long bones separate at a touch. Body rests on floor of small stones, ribs are in natural position, body was undoubtedly buried in the flesh. Body was laid flat on its back, arms extended to the sides. The wrists as found under the edges of the pelvis, only a few finger bones remained.

The West skeleton (adult) very badly decomposed. Probably buried in the flesh, but fragments much disturbed, the sketch shows a general impression that skeleton lay on its side facing west, but this is by no means certain. The skeleton lay on a floor of rough small stones.

I use polished red chert faceted red HPT on yellow slip found right with tons. Design band.

No objects with either burial or ~~adult~~ had one found tooth with green stone insert.

4/26/31 Sunday - all day making sections from notes & sketches - still to be completed.

4/27/31 On A. C. poles: 3 men clearing back of A. C. poles for survey. 2 on temple (most time spent falling trees in front of S W down way.

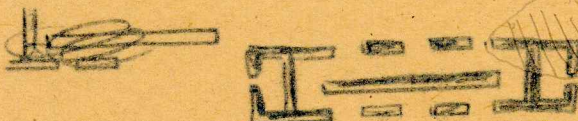
2 men finishing test cut Str. #4. Took photos.

W. L. sketch + study of construction of Str. #3 (and drawing for notes.)

April 28 Feeling lousy.

Whole gang (?) on central acropolis temple (begin job yesterday
P.M. clearing from both sides - below no lintels.

Probable Plan



aimed layout
as possible
etc.

Much delayed by trees on both sides.

Yesterday worked like hell: Made sketch + study of stone in Stud 3
cut. - P.M. to SE group, took levels, made rest of cross-section.

After dinner developed - all avenues closed except when I used
Wyers' flashlight.

Apr 30. Feeling lousy - bored. Went up late in a.m. - 7 men on central

acropolis temple. ^{There is some binding of the lintels to NW.} sketched stone.

A slab roughly squared, evidently used in the building,
shows a wide engraving of an animal. Must be 200 dimensions of
~~lot~~ stand P.M. in camp, printing.

Have cleared most of N side, about 1/2 of north - Believe
no lintels. They do see any point in excavating
temple itself as too narrow for an altar. Had intended
clearing this small structure completely. Will penetrate
doorways to inner passage at least.

Apr 30 - cont'd

32

Re SE-1. Painted shed collections: from above Room A Floor, show many more, but:

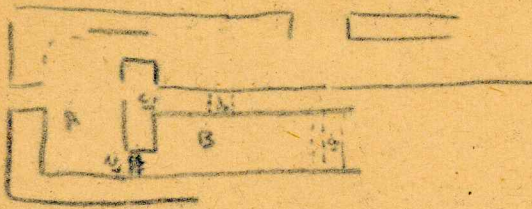
The level below ("wash area oldest structure") has painted sheds duplicating the letters above, apparently - including block outlines.

However, from below there are no instances of actual human or other figures identifiable - and no engraved sheds, of which there are several beautiful types from above. No forgetting however that Louis excavated Room A + Trench below - and a much larger area at that.

I am quite sure no painted or engraved sheds came from the upper structure: but practically none were found.

My the find was from this site certainly - and duplicated in more than a tiny fraction, if at all, in the next group excavations. Also I think (to be checked up) was duplicated in SE 3 or SE 4 tests.

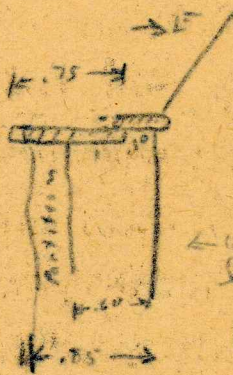
There is some evidence of banding corners in W2, Shed 1, but not nearly so much, and especially, the walls there are not made of slabs below the arch.



Room B is formed by walling off a longer passage at α , with arch for effect. - plaster runs right by the wall. The doorway to A was also later walled off by the thin & poorly constructed wall at β & the structure of this doorway:

The transverse arch is carried across the doorway by plain roughly worked of lentil stones - one is at least $1.10 \times$ only .08 x ? & further in shingles over another, lower.

See Etw:



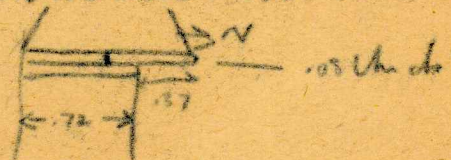
Plaster from there is not another piece of the lower arch: at least of 20, it was plastered over as shown.

← Well bonded - But sometimes by use of long stone - i.e. - long both way. However,

too much F for chance. - this excellent shape

The mortar & plaster on this structure extremely well preserved, even on inner exposed surfaces

The Ely lentil stone above extends far into the wall at α : ED is broken as is the other, but says only slightly.



The arch at this end unaffected by the doorway:

There is a half-hexagonal bonding at

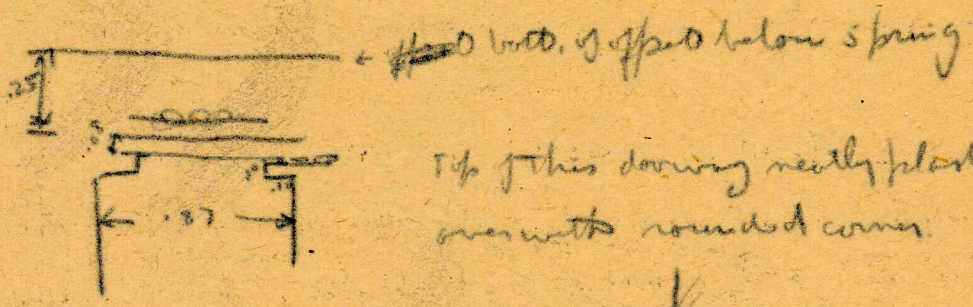
but the 2 walls are parting. nothing like the corners



- 1.0 - arch with 3 slopes

Room

Running through center wall at d - level in effect, thus:



Top of this doorway neatly plastered over with rounded corner.

13 The secondary partition wall is made of small pieces of slots, in marked distinction to the heavier or lateral wall at its ends. Even so, the slots in the transverse wall proper are smaller than those in the central longitudinal wall. They lengthwise .35 : 45 - 1/2 in. of the larger ones in central wall.

14 The 2 walls are sufficiently rounded so that the end wall, in setting, has slops stones attached to the central.



Remains of N half of arch ^{only up to doorway from W} + large slots projecting from S but still in position, in detail a lateral base.

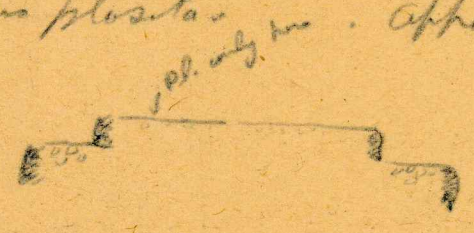


5/2/31

Yesterday: 2 men below on plaza on "N" side of acropolis. This is about the same height as court #2, but unconnected with it - separate of high steep natural hill. There might have been a wall & path?

Men clearing for a surface section of long structure which borders the "E" side of this plaza. Apparently remains of a low wall on the

high - rough, walls @ SE



blasted floor, about 30-40 similar to top structure section, though hardly so good.

Rest of men on Acropolis central temple. Took chief over the N side & top. He is a good mason he states on terrace (or fallen from it) in part of false pyramid "E" of ravine bordering the main line of debris from the summit. This a.m. ok & clearing a little.

Asked if it should be clear the central (S side) part of the central temple he thought a long while and said no, because it is too narrow for an altar.

Started over clearing "W" temple pyramid.

Today:

Continuing section on N. plaza, nearly done (8.30) - & clearing above pyramid: Quite a system of walls, perhaps a stairway, on the "W" side of the pyramid. Balls are up for throwing dirt.

S

Expanded stone from Central temple
near old "NE" corner dimensions:

11 1/2" - for base in the



- Roughly shaped



Mod. Plan & elevation

9/4/31. S. 40 90 ft.

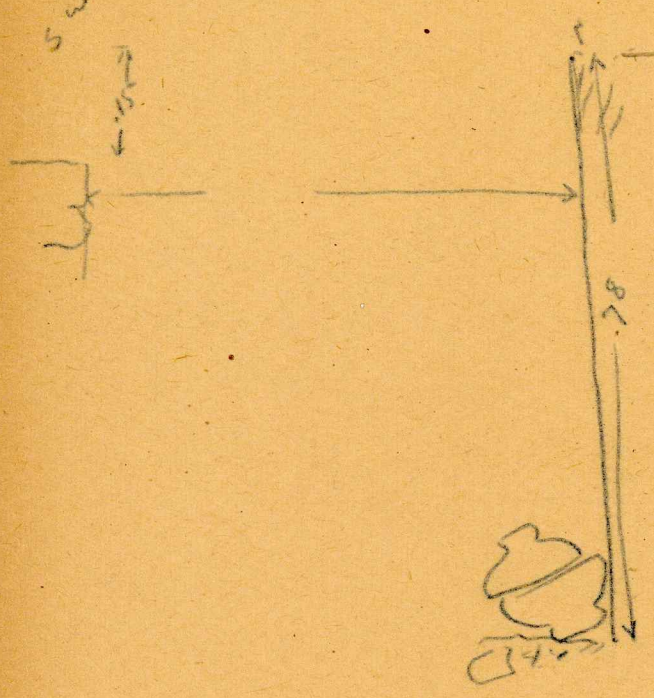
(S.W. clearing terra yesterday located S. 40 y base in position).
 Wall of garden pond - Louis misundertook this morning, removed
 "W" side of arch, apparently wind down & removed incense
 burner with cover at pond base of slot a - his report is burner
 however; was tilted only slightly forward. showed clear of dirt,
 when he removed a large irregular stone. - Tilted ~~contents~~ of contents
 (turned coped) confirms him in this. S. 40 base forward very slightly,
 incense was right against the "S" for. abundant middle, resting on a
 stone & plaster "floor" apparently with large loose fill above it.

See sketch:

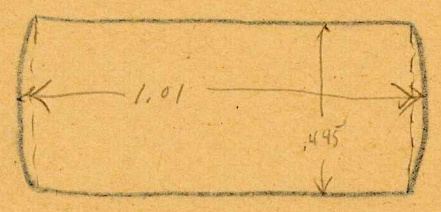
5 wood fast
← .15

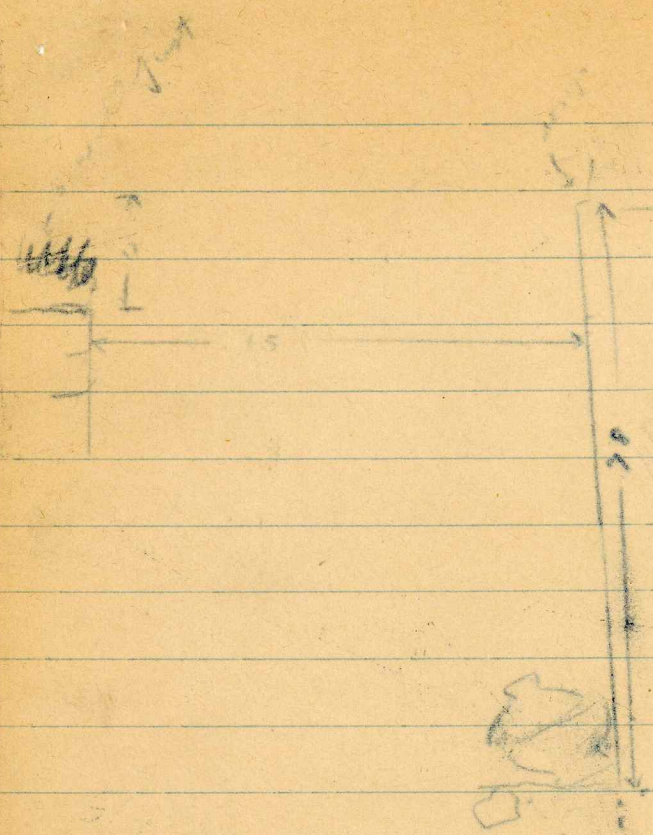
case

← level of lower edge of
glth area, .015 below
lower edge of design in front.



Slightly convex sides, flat back + front.



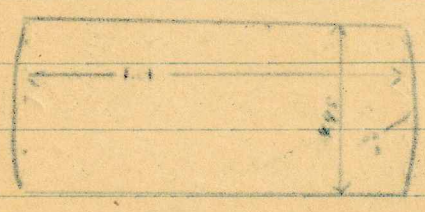


slightly curved sides
flat base

slightly to just base so white with some below
the level, weathered color above

slightly

slightly concave sides, flat base



List of men Mar 23, 1932.

Piedras Negras

Arrived Friday, Mar. 1932 about 5 P.M.

Sat + Sunday making camp, inspection of ruins.

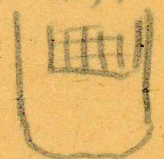
Monday Mar 21: 4 men most of day on ^{Acropolis} Central Temple (Str. LIX)
Took Fred Paris + Mary (overhead) over S. group, S.E. Section, Acropolis.

Tuesday - available men clearing east group: spent most of day in camp, making camp, checking second potatoes, conferences with chief re finances, mule hire etc.
Mules very lightly loaded both trips: Espansa says he couldn't do better because his four men are officials of the Liga + want to make more work.

Wed. Mar 23.

9 men on Str. LIX: looked at some stelae.

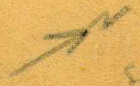
Stela in E group, # - block of 48 Jan say, 4 glyphs on bottom



LIX

Fragment of stela inside sand doorway - small but low, having thin side + large flat sheets, some with stela adhering.

Stela decoration



see AB



Same condition at C.P.
A very few stels at

Report of #s of stels + moulded stela fragments - resting on stone debris, with stone debris + humus over it - about 10 to 15 thick (stels).

over 2 pages

Carbons of LS Note Book
Piedras Negras 1932.

Men, Mar 23

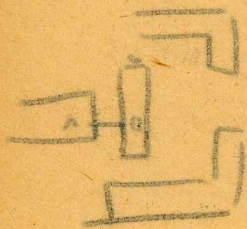
- 1 Alphonso Marali
- 2 Benjamin Aguirre
- 3 Sisto Perez - looks intelligent
- 4 Amnesetto Jiminez - medium
- 5 Anaselio Perez - doesn't look so hot
- 6 Carmen Acopa - good
- 7 Stanislaw Chabarrilo - looks dumb?
- 8 Leocadio Urive - old fellow with mustache
- 9 Jesus Perez
- 10 Amado Agilar - good

Tools, Mar 23

Picks, w.w.		5	
Picks, " (old handle)		1	
Picks, old, w.w. handles		0	
Shovels - long		3	9 (no bent) (another with broken blade)
" - short		7	7
Hand picks		1	1
Axe, hand			
2 horse brushes			
4 white kroms (2 new, last year)			
3 bulcher knives			
2 trawls			
1 box (8) pins			

Very few (foss) stands on the W gallery.

I cleared (finishing touches) in center of west gallery. no trace of an altar, fallen stone clean to floor, white & good smooth white or yellow plaster.



→ S

Section AB



1.00
.40 (pure disintegrated plaster, moulded fragment, stands. Several flat stones lie level on the stucco - no more stones below, nothing else above.

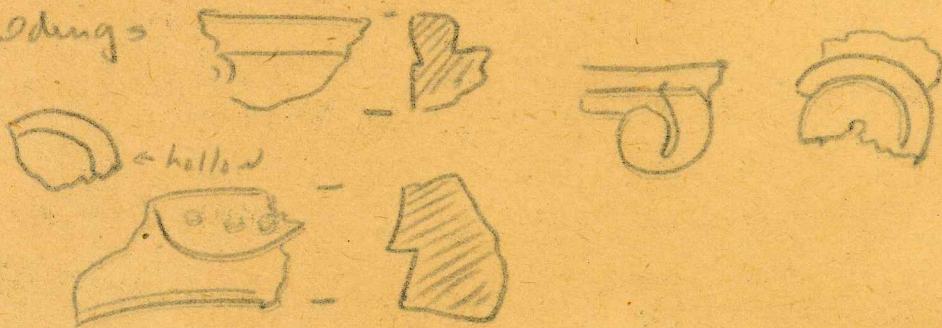
a two of moulded stucco at 6, h = about 1.25, close to the wall - plaster there in place in fragments, very soft, but no moulded stucco in place.

Shaded area - many pieces moulded stucco @ about 30 above floor

Patterns of Stucco "Balls"



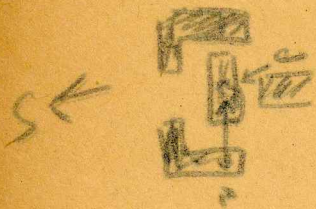
Mouldings



The indic. to stucco in high relief - as much as .07 - probably more. Similar to head gears.

Mon 23 - cont'd

(4)



Set A.B

There is enough overhang, 3 stones deep, to prove the small doorway, front, to S end room was vaulted.

The name in front gallery behind middle doorway (i.e. "E" side).

Mon 24 - Rained all day - worked at camp, ~~principally developing~~, unhooking, on house, etc.

Mon 25 (Thursday) - Good Friday - at camp, presumably in developing.

Mon 26 9 men - no working at camp
Central Temple: Plaster in position at 'c' (above) for you to a slight offset - the later irregular about .03 - Plaster indicates it was one lot of irregular plaster, in front room, behind l/p (S) door, @ .50 to .60



→ ✓ Section A.B - deposits of 10 to 20 of stone + mortar - in some slabs slabs practically on the floor

Sec C D - inclined slabs right to floor - certainly no altar

Inner walls more irregular - smaller stones + slabs - but still combination of quadrangular stones + slabs - See photos. But the principal difference lies in the corners of the outside walls, where large quadrates are used. This is also the case of corners of the house and wall, the middle wall being distinctly inferior to others in size of stones, regularity of courses, + present condition.

Mar 27 - cont'd

(6)

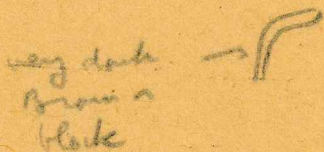
LV To herms of construction. Over the latest floor fairly thin painted
sheds -



R = orange red
Y = " yellow } on white slip
Lines - dark brown

Orange as white inside

to Rim piece



Case, coated with more parts, both
fixed - probably some figures.

No stucco: Plaster floors on early structures
Section to be made.

Fragment of usual type masonry, also over latest floor - might
be fallen from wall.

Mar 28' LVIII - North range.



Masonry - Stones set in mortar, now quite soft.

Fairly well squared blocks, with many small shod slots & very
small slot chinking in rear wall.

See photos of
North range

And on way wall - nearly all stones of fair size - very few small
slots except chinking slots - stones at corner suited for
large size, well laid & chinked, some ~~hard~~ bonding - including
use of top of very large slots which really bond better ways.

1.65 x .45 See 2 photos of these walls. 'infected' stone is
nearly all well shaped stone. Note that at corner, despite bonding,
some small blocks are used. If the stone is level with
& 'aligned' - now about 95 down floor.

Mar 28 - contd

(7)


Men to-day

- 1 more of day on LV
- 2 2 hrs on LVI
- 7 clearing all day
- 1 " 1/2 day
- 1 " 1/2 day on LVI
- 2 1/2 day on LVIII
- Balance (total of 9) on LI.

Mar 29

Level of debris in center of W room just between 30 + 40. No roof roofing slabs.
Note better later (no discovered heavy slabs).

LIV: bench from rear about 1.50 under - room like square heavy blocks, stones or thick plaster - probably moulded.

Small *Sacandona encensaria*, few broken off & missing, on SW corner (of debris) about 1.50 above Court 2 level - found by man behind station
Main when he searched for it - was right on the surface usual life 


Men 8. : 1 on LIV.

Balance on LI.

LIV: a tent; rear door jam in rd. of trench from rear: had to step up trench to a very heavy well preserved deep relief stone ornament, bulb up on small thin slabs of stone.

LI. Praved pillars; W end room solid wall: to the east face, with 3 instances of thin secondary walls.

Sections = photo of W end room. or on

Considerable number of hot sheets near floor at several points - mostly chinaware - brunched as of pots but not enough probably to make complete pots. Pottery includes bells . also thick pine, probably griddle.

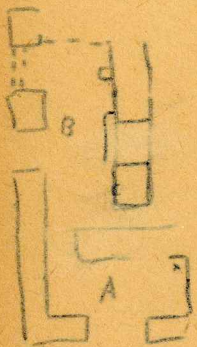
Wooden roof practical certainty - note height of wall of end room + of debris at E end.

In camp lunch by 3 P.M. - grand economic conference.

Mar 30

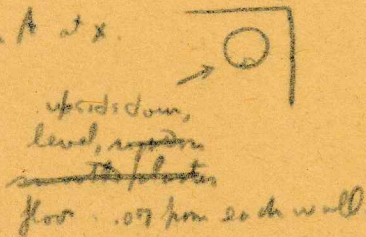
Str XLIV: North side. Possibly a stairway leads up from our level: at level of northern plagiote a broad terrace, which probably connects with the former - well preserved terrace well behind it. On the terrace toward top (C) a much eroded stone of some size, to be turned - could be remains of ball of size of bullet (P. 412). No obvious signs of patches, but this terrace corresponds to that of the upper strata in Str. ^{XLVII} ~~XLVI~~ Pyramid terrace above this - can be worked on with clearing probably.

In the floor of room B, shreds of small pot or bats with ball @ feet (replaced by corner - gut curtain, came out with pot). Plaster floor defined here



Other shreds from this room above the floor

Pot in position, room A & X.



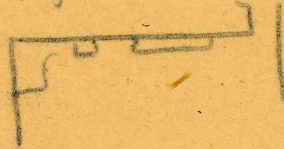
Covered a spot where white floor had been broken through: over the bed + surrounding floor, white in bank, thick, broken bits of plaster, also under the bed, below well defined white floor level. - rats I lifted the floor under it with the pot (had cut around it). The bank below was limestone, which is about same color as the white - in bank plaster.

Mar 30 - cont'd

This white or pink plaster occurred in diagonally opp corner over floor - but there is no obvious deposit all over the floor.

Floor is plaster

Room B - low sill or bench along head of rear wall - to be planned separately extending around E end.



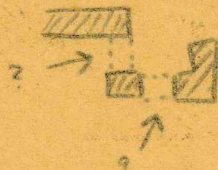
Catalogue No for Str. L1 - W-8 -

W-8-1 - Piths on ~~the~~ floor. Rooms A, B, etc.

W-8-2 - " " in floor, Room "B"

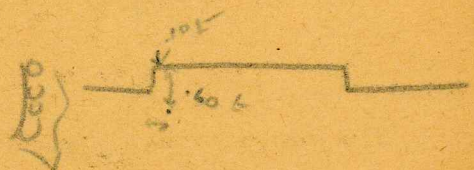
W-8-3 - numbers on S side - 2 at a 3^d from W end room.

Str. XLVIII the end room in all probability as a balancing beam, with secondary wall bulbois - up onto see + look for pier clear around.



Mar 31 S Pier (Str. 21) opp N Pier 2 - at base of pier side, plenty of filler white or pink plaster, and no pier in foundation side of pier. Though small - almost certainly the walls were covered with the white - surface pink plaster. This is the best pier to be photographed.

XLVI ^{Architect} - Niche, painted sculptural stone fragment



6 pieces (4 large) removed brought to camp. Another very large base left in place + buried. Cameron + Stanslaus through out the 4 pieces found by ~~Stanslaus~~ Fred + Dave - examined all stones through and not deeply buried. These had to come out last

not more than a couple of cubic meters of earth was removed from below
the vault-stone level. Red hand - well preserved - probably very
handsome.

Same afternoon - uncovered NW corner of a vaulted in
terrace flanking XLIII

Men clearing W side of XLIV about an hour, with 2 men on
"altis" ~~to~~ N of LI -

Followed low walls, apparently enclosing small stone fill,
with slots on top near front edge - rest was badly disturbed
by roots. The walls simply peter out. Will excavate center
for cache ^{2 m XLIV} ~~massing~~ - all for 15" hr.

Then after 3 men on XLIV; 3 m XLVII (niche) + 4 m XLIII
terrace #

The stone in XLVI is ~~at~~ smooth on a good plaster floor - there
kinds found in front of ~~the~~ S end of the niche, the lower part
of which is filled with a bench.

The heavy white area in front.

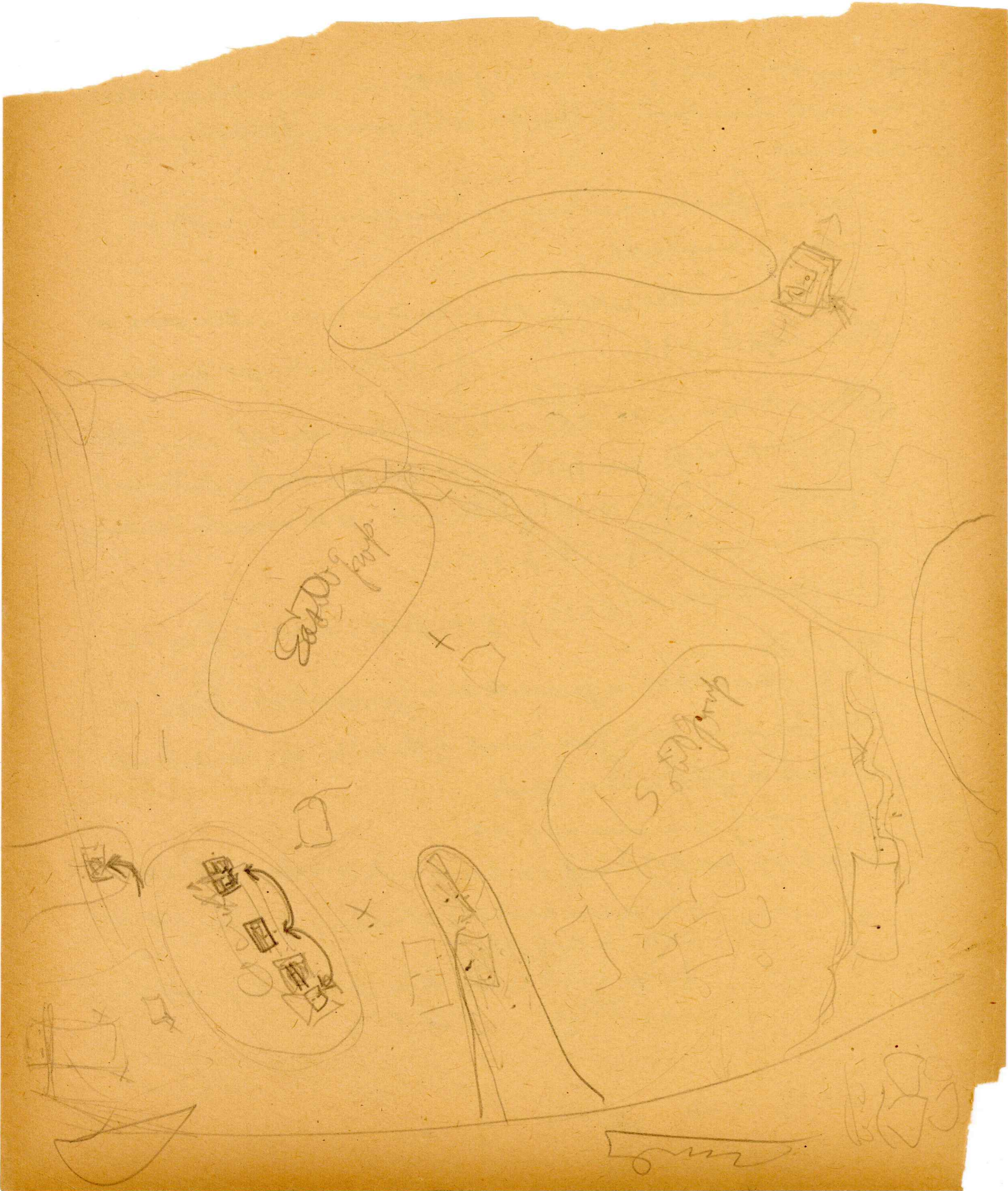
XLIV has a hump of debris protruding out, corresponding to XLIII



also some indication of stairway at base of N side,
toward back of Plaza

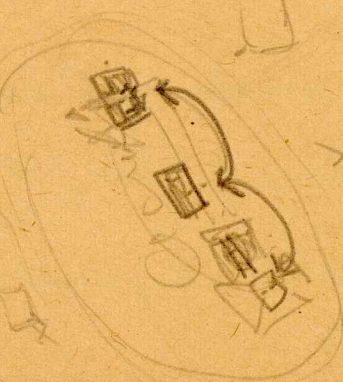
But a good terrace higher up - the stone dropped to

5 was nothing.



East prop

South prop



ms

April 2

XLV - 5 lot. C. stones, right of north (N). .70 x 1.00 x .12

Rain off and on all morning

XLVII - ~~4~~ 0 Modelled ~~stone~~ stone - stone stands in
J. debris in pond (Round 3 arch) - Started 2 men with trench,
about 3 hrs to-day.

About 3 hrs of 2 men on LIV - remaining trench for section here
also (started yesterday afternoon)

9 men - rest of time on ~~XLV~~ XLVI - about ready for going after
stone - no plan for layout - looks like stone 2 or 3 meters
across, or 2 or more stones, painted.

Believe puzzling worked fragments which have been turning
up in the altar top, plan, hastily hauled - likely the
top of the trench. Can't yet account for the left hand of stone
falling face up.

Missing piece is badly fallen forward, but identified - though
not as to position as yet - the stones XLVII are to right (N)
of where they should be for correspondence with those to right
(30 cm ±).

Nothing turned up on steps to left of throw - was cleared
very carefully & slowly.

Examined all stones fallen on either side of throw, by Six to
believe no question what was about anything outside the throw -
& we combed that down 30 cms or so immediately after the stone
was found. We could have lost part of the "altar top" but found
some of it. This is likely the stone which puzzled me.

April 2 - contd.

cleaning - little 2 transverse wall to rd (N) of center, XLVI - but if the more central one is secondary, the other primary - masonry is up. Masonry appears different - it almost certainly is different, legs probably not. Left, rd of rd least is ± slab, rd it. blocks

Apr 4.

XLVI How clear down (see plan) level 3, rd 30-35 above floor. Will proceed on vertical faces of this.

From the top of the stones, the rubble fell out + base of it to S.

cleared mass of stones getting away very small fragments - boys very good -

1 Carmen Acuña, Sixto Pérez, Amador Aguilar - all day here

2 men on LIV + later cleaning N. side of stairs way below LVI + hunting rubbish returning well behind W end of LVII.

2 men cleaning section through LVII. from level 3

Apr 5 finished cleaning stones - cleared whole house under about 30 by house's corner + broken - careful examination of debris - recovered large number of fragments, some sculptured of a painted, 2 unbroken masonry small glyphs

Between Nos 113 & 113 (see drawing)



↳ to the 13 13 between this side. fragments, probably

Altar - 50 S of N edge of masonry, pushed out (or back probably) above small slots ± in position (fallen forward) Picture of this, to D SW to take several and by mistake before took the picture.

Small quantity of fragmentary wall plaster near the wall.

A very few fragments of stones, one only moulded, near center + near wall, among the stones above alluded to. Probably

thin in mortar used in probably near surface for altar top.

Took 2 pictures from tower showing all major fragments in position. Also cleaned sand of stairway - Had chief take 2 more from Tower, farther back, with wide angle lens.

2 then finished sketch of L VII section, & started cleaning other side to get thickness of walls & prove presence of side. Have 20 to depend, have press on S side, though little doubt.

Paid Jim, on man cleaning transverse walls to N of niche in XLVI to see if they are secondary.

Paid Jim. Also started cleaning "altar" near 41 - stands, a veritable harsely human - more later.

Made reasonably accurate drawing of all major fragments of stone from niche in XLVI: got all carved stones down, and assembled. Heads missing - part glip - legs nearly complete - only part of table - a throne with back - more. Chief (Lopez) think that 3 shows scene on this throne - at least a similar one.

NB - We took all from 30-35 above floor in front of + on 2 sides of niche, down into barrels & barrels & bushes. Only excavation, since about 50 x 1.00 on south end of niche, where Carver just went through, & threw out 4 pieces of stone, one of which, ~~contains~~ of glyphs, & part of necklace, was found in position. These 4 were found on the surface of the throne in 5 minutes. We immediately combed this throne to a depth of a foot or so, by hand: and Six to cleared all fl. over on the 2 sides - spent all afternoon & next morning at it - recovering (in both places) several pieces of altar top and many small fragments, probably of sculpture. I am satisfied that Carver

threw out nothing of any size which we did not recover.

~~As it is~~
We cleared the steps to S of the throne after this, all men being instructed to look for worked stones, and they did more looking than clearing - there was only a shallow deposit ev of 0 over the top, ^(wood) terraces or steps, which were carefully cleared by Amador personally. Nothing turned up except under the walls of my draw (S 6 to 2)

I am therefore certain that any masonry pieces are either broken beyond recognition (there were several of these, which might be from the screen or the altar; are in the small amount of dirt still to be remained to the N of the niche; are further to the S side; or originally fell lower than the broad step below the plinth, in the center, and so are buried under my last year's throne.

all dirt is segregated: that from side of stairway is below in the plaza; all last year's is between my retaining walls: all all from floor level & above it is over the latter, walls being built up to hold it.

All the dirt from the 30-35 level is segregated on the top of this, held in by a sufficient transverse retaining wall, ready to be sifted - minus only stones which Kemp man had thrown back & which were tossed over by Stansler. He watched dirt as well and recovered several small pieces missed by the others - most of them of doubtful value - which means all dirt since we found

what we have has had a pretty good double check.
The boys fell in with the idea beautifully, and I have a wooden
box full of Sigash fragments besides about a bushel of
small ones, many of obvious value, several with glyphs.
~~Some~~ Combining the dirt around a Jollen monument is
the only thoroughly worth the trouble.

11
Rain is 3 - made bringing down stones a little difficult.

I have had 3 to 5 men working on the getting out this stone
4 full days since the 2 boys found it.

I did not clean except superficially - only enough to clear some
sculptured surfaces - each stone wrapped in burlap over soft
earth as soon as cleared. You can't clean a painted or other
stone while it is clamped without hurting them, these were
brought up enough as it was.

will continue to sides. - say the same days of dirt.

Apr 6
7th evening 1 on mound behind wall (high terrace)
2 follows N gallery of wall
1 on 61' altar
3 on 12 VI - pushing back cut to S.

Have covered the lower stone from in front of me with burlap -
showing other levels of new cut and one thus with wheel banner
Have many fragments this a.m.

2 or 3 stone fragments about 2.00 sq mths, center of room, about 50 by 50

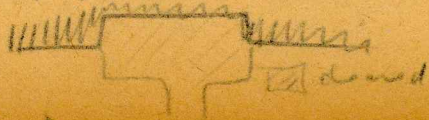
Bench in under bench - a few small fragments, some color
 Central portion is badly bisected - 40 N and apparently a step to the
 top - seen as other, but pushed down to back. On the latter, remnants of
 plaster - on the former, some of soft earth, back in the corner, a trace of
 painted stucco, badly run but above is thick



- 12^{or 13} or three slice sherds
 1 thin mud location stucco - no surface left, ~~found~~ ^{found} dia. 106
 a stucco head or ball, dia. .025
 1 piece (and locat) stucco on thin side of stone
 1 small piece of mother of pearl from debris 16.2 in S. of niche

Apr 7 10 men - 2 clearing waste on piles
 - dump or two on grid stair way - statues
 - cleared in part of XLVI niche to 10' remaining void step,
 no results.
 - Found clay side of stair way up part from back of XLIV, still
 looking for connection to same in XLIII.
 - Failed to find datum way from XLIV this time, but found lowest
 level wall of pyramid - meters from XLVI - have failed to
 track this up near the pond - remains pure fill
 - 2 men making out XLIX.
 - Located sly hole for lobb by, very clear, very mud very plain, but
 men eyes softer than + slight disturbance - failed to find these hole
 in plaster surface, as it was all broken up near the wall, but
 found them in the body of floor - see drawings

Apr 8 3 men clearing 1 cleared bench in XLVI niche - rather - see
 drawing for construction
 cleared whole area in part, about .75 below floor, no results
 except 1 beaded cube - no drawings



1 man located city side stair way wall, to XLIII
also cleared corner, at XLV. - curious come here - see drawings.

4 men on vault of XLIII

3 men clearing in P.M.

over

4/3/32 (Mon)
(with access to the men)

Sifting earth from pond of water (2 men)

Trenching platform to side of XLIV - find lower platform, well toward corner, level 2? - floor to wall lower level (2 men)

Carrying XLVI to S. (2 men)

going down into shaft hole in W-17.

- found shell, pebbles, bones etc. - mostly buried.

Pruning and night.

4/4/32 (Tue.) - finished sifting XLVI - starting to examine the chamber. (2 men)
Carrying trench into platform of XLIV to meet E. wall, level 2 level (2 men)

Carrying XLVI to S. (2 men)

" down XLIII platform, 2nd part - (3 men)

Making drawings, cleaning walls etc. - no drawings.

Have located the 3rd corner of room - possibly a doorway to the E near this corner - further digging to S to all for angle of rest

There have been besides butshards, several pieces of unworked burned clay from sticks walls & door - impression perfectly plain.

The spring of ash on the E side is 17 lanes than that on N & W sides - proved by stones in position on N corners.

5/6/32

Since the storm, the fire I have been making not sheets in the house - but a few notes in general.

Took XLVI chamber to S end - kept it about a week up & nearly done. Carried down vault and cleared skeletons, personally with a little assistance from chief. He cleared bones W of SK. B of some to N. I have been delayed here these few days by rain about 4 days, showers 15 or more since they first quit.

Took out mirror & bowl to-day - large photos this.

Wound up several odd jobs on Acropolis:

Outside section of ~~str. L1~~ L1

Passways (& wall) on XLIV

Cleaning Plaza trench for them.

" Section from W on LII, including ^{to} ~~the~~ end wall & doorway (?) - to

" Platform ^{for drainage} str. of the altars.

" Much cleaning - started for roches only. LIII - very curious - see note

Started Bull Court 4/31 - men with machetes Sunday - = 6 days

so far: with 8 men 1st 2 days - full crew since.

Ho - spent a little time with Fred Parns

a little observing Cherson on Str. IV.

The fire cut out about 4 working days, which I spent clearing in the vault of XLIII (Ob w-17) I jolted everything out of whack, but we are getting back into str. IV.

Work on Bull Court proceeds slowly, methodically, but well as it should.

Clearing fields by sections; will try to keep museum in center of S field clear for photo. Clearing.

Clearing both inclined planes (X 2 dom) XI done to-day with trowels, handtools & brushes - cut a spot a real stone road - small job - same principle as on platform of the altar - with the right men, this is the way to understand surface ruins.

When there is danger of a wall falling, prop it up till it is drawn & photographed - partly curvilinear butress fill on N of X before I had it.

5/17/32

Ward m... work

Port Ward

Amador

Sisto

Juan

Benjamin

Estanislao

~~Amador~~

Annunzio

Carmen

Oranero?