

Mason # 2 P. 2 1931



Made in U. S. A.

Standard Correspondence Book

FILLER NO.	DESCRIPTION	SIZE	NO. OF LVS.	COMPLETE BOOK NO.
5244½	Duplicate	4½ x 7½	150	5244
5245½	Triplicate	" "	150	5245
5250½	Duplicate	5½ x 8½	150	5250
5251½	Triplicate	" "	150	5251
5252½	Duplicate	5½ x 9½	150	5252
5253½	Triplicate	" "	150	5253
5254½	Duplicate	8¼ x 10½	150	5254
5255½	Triplicate	" "	150	5255

Complete Books bound Red Artificial Leather Back,
Black Cloth Sides.

Specify Book desired, when ordering

No. 5244½ Duplicate

Mason
Piedras Negras



2

Peak

Moon

98-7

Book 2 Mason 2

Friday March 27.


Large on east side averages 30 cm above floor. Max. height of wall for ~~side~~ floor at n. side of niche 180 cm. On fallen feet entrance found another stone just like that in niche, 20x29 at one end, 20x23 at other, 58 cm long. Pieces of stucco ornament found in floor mixed with mortar to the fill. Some bits of light color, mainly red & blue.

Saturday March 28
6 m on same pyramid. Found fragments of clay lentils on

2

platform on foot of pyramid. 6 large pieces & probably many small ones. Very much eroded & fragmentary. Measures approximately 146 x 120 x 30; two pieces entirely rotted away, central piece showing seated figure, lower piece two seated figures & some well preserved glyphs in center. Low right with series of 14 rather good glyphs - upper left with 14 series, very well preserved. Probably single column 9, 9, 8, 0, ? Also another fragment, probably part of foot of this with chthonic glyphs. Certainly is from main

entrance. Was found on small
 upon a platform $\frac{1}{3}$ or $\frac{1}{4}$ way down
 pyramid. Probably stela now at
 base of pyramid, no 39, were
 stood on this platform. This
 thing is indicated by discovery
 of cache of flints & obsidians &
 finters on edge of the platform
 which is now much destroyed.
 Was at height approximately 3 m.
 below level of floor of building.
 All so much destroyed is very
 difficult to follow. Probably
 a staircase for door of entrance
 to platform, but partially gone
 now due to fall of building.

Distances of interior construction
 appear before staircase found.
 We are working on slopes
 below the two doors & find a
 high wall in part of width one,
 probably on staircase base. Probably

 stepped pyramid with
 steps in center. This wall
 at about 190 cm maximum height.
 Probably was a wide terrace below
 it, but probably above steps built
 against it & now destroyed.
 Present width of this terrace
 ledge 160 cm & apparently steps
 in position below it, 30 cm
 wide & 30 cm high. These

steps below ledge appear to extend considerably to north, but no traces of steps were found just high wall & one in center. If stela stood on this ledge, it may have been built out on steps jressed around it, but this too far gone to determine. Set 3 men to making hole at base of pyramid, to follow trench into it & determine construction. About 10 ft from present base of pyramid. On upper station soft black humus mixed with small stones & rubble. A few slabs of large red vessels found. Small

stones probably fallen from pyramid.

Sunday March 29.

Did not dig.

Monday March 30.

6 men. Began with 3 making trench at base & 3 hunting for holes on north side. The position of stela 38(?) at base of pyramid indicates that it fell from platform. Is face up on slanting slope, face to west & high. This 127 ins. at base, 144 ins. width. 4.15 long. 35-40 cm. wide. Slightly concave base; chest straight.

sides, rounded top, like in large
lower & small upper section.

Bluffs on side - slightly, and
curve of top. Bottom ~~is~~
perfectly flat. Lower 95 cm flat
& fully entered. Face gently
eroded but shows large single fgs,
fully and out, feet turned
out in profile. Stone broken at
neck. Upper part shows face &
large hardness. Other features
indistinguishable.

On excavations at base
shells found in upper levels are
mainly coarse red, made into
with good texture & under rock

crystals & small iron red nodules,
also some buff, some from smooth
red; leg of tuff; A little lower
fine & smooth red, also
fooly lobed unworked black.
From depth of 50-100 m. fine
course red with sand & gravel joints.
& more than red, smooth surface
with thin rim of fine joints,
also thin buff & smooth black.
But: black horizon with large
stones to depth of 60 cm.
Thin lower & more grayish
stratum with much small
stone & pebbles to ca. 1 m.
& below that decomposed rock

outlet sheds. Only record
 excavation never close of pyramid
 somewhat smaller. Long course
 sheds on surface with coarse
 joints, some buff some with
 finer joints, some smooth red
 with fine joints. At about
 depth of 90 cm many fragments
 of fine joints and with glyph
 contours, and dings. Black
 + red on buff. Vegetation patches?
 Also large red coarse sheds +
 yellow polished red. Very many of
 these. Some thin red with black
 inside surface.

On return of next count

east of stela terrace are several
 small burrows of earth + gravel.
 Probably natural but intriguing.
 One notes any from foot of
 terrace towards e. About 4.5
 meters long, - 2 m. wide + 70 cm
 high. Steep sides. Encountered a
 found full of grey earth + small
 stones. Some patches + traces of
 smooth red sand. Also coarse red

Also seen great quantities about
 1 m. depth at foot of pyramid.
 Both thick coarse red + joints
 At about 110 cm sheds are
 practically all fine more, either
 thin joints or ~~practically~~ medium

thick polished red. At depth
of 120 cm shales are more buff
than red + more very thick but
also in thin + fine.

Description on lintel, vertical
series, is in one column +
reads 9, 9, 8, 0, ?, the 5th
is more probably also zero.

Men cleared out doorway of
with entrance to temple 42.
Center wall has a better finish
below floor level. Above floor
level is much filled on outside
+ thickness of wall difficult to
determine. At least 110 cm.
But to outer wall at floor

level is 125 cm. This outer wall
is relatively high + straight. Possibly
a high step + then level to top
of wall of next terrace edge.

No steps found here. Measure
about 3.50




from edge of
the wall to edge of
next wall below. This wall is
about 85 cm high + has a bit
slightly higher than top of wall
below. Structures of rock fill
found slightly below this.

Had more dig up
another yard + dirt mound in
east end of next court + found
nothing but a few shales. No evidence

of intentional piling in either of them. On day at base of pyrites second hole close to base, hit red clay at 120 cm. or 110 cm. Some slabs of thick but smooth buff were at very bottom. Greatest number of slabs was at from 90 to 100 cm depth. On another cut in upper strata saw profusion of thick coarse red slabs. Some smooth red with better joints. Thick were mainly. Much poorly bedded & black. Coarse ones in great majority. Some polished red & fractured & in black, but minority. Parting

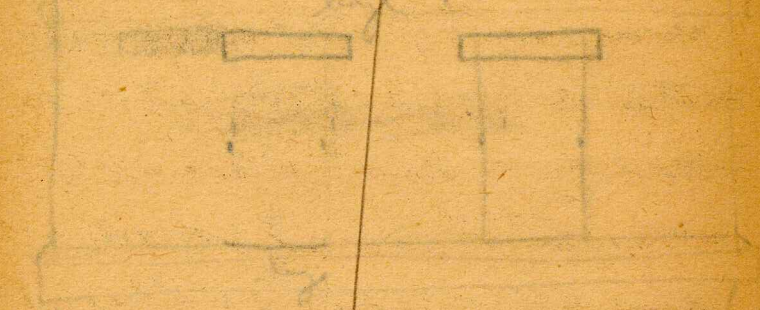
mainly light red or reddish.
 Tuesday March 31.
 Set 6 meters work on study building. "Luna de 8" of slates. This was about 19.50 miles feet east (? as I guess) feet destroyed study, next a central part standing. Just well to west exactly 3 m to door. W. all this is 80 cm wide. Greatest width with 86.5 cm floor well 85 cm wide. Eastern width of block 1020 cm. measured. W. side 85-90 cm wide (same width as well). V. central well 440 long, 85 wide. W. central this same side 120 wide. Central

room 380 wide, 470 long.
 Orient perfectly, central bit at back,
 extending 45 m. S. of S. side + 260
 on open side of platform of first
 central wall. Probably 3 entrances in
 front wall, at least 1 central one
 in rear wall. S. central aisle
 + 200 m wide. W. wall of central
 room 90 m thick. It is stepped
 back through w. central wall with
 top 110 below spring of arch. On
 30 m wide + 36 high. 
 Arch all capitals.
 Plaster noted in place. No other
 details in any. Arch between
 central room + w. central wall with

roof level is 10.5 high from spring
 of arch of 11.5 from spring of central
 to ceiling of roof. Central aisle
 2 small decorative ledges made of
 solid, substituted at beyond wall.
 Upper one is just below spring of
 arch .10 m at base + 5 m at
 top. 14 m thick. Lower is 10.5
 below this + 14 m thick. Extension
 out 5 m also 14 m. The upper
 edge of this, a family of upper ledge
 as beak. } On the m. wall of
 central room, opposite central line +
 therefore on extension of w. central
 wall, at base of spring of arch a
 just above ledge is a small

✓ 17

~~square hole through wall. about 15~~
~~in square. 2 inches in feet wall~~
~~of central room. One 6.5 inches by~~
~~9.0 high (at) next on north~~
~~side of hole. 4.5 inches~~
~~wide also. 11.0 in. below the, 4.20~~
~~in wall to W. side. 11.0 in. not all to~~
~~west side. (V. note) 1/2 feet to the~~



Backs of niches as the opening of
 wall niches; aged top
 at wall feet. have rounded

18

~~with sloping back, all plastered~~
~~Depth of base 38 cm. ~~Base~~~~
~~top of ^{base} level of lower ledge, top of~~
~~ledge of hole 15 in below bottom~~
~~of upper ledge. [Question is, are~~
~~now darker than other blind? Very~~
~~narrow, 3.80, 2 opening of niches on~~
~~W. side all does not indicate niches~~
~~open. But no evidence of door.~~
~~well dividing + now into 8. Of this~~
~~well is marked + is now below of~~
~~80 cm. now width 1.5 m. wide 5 ft~~
~~Plaster floor reaches at base of W~~
~~central wall. Is 320 below opening~~
~~to 120 below base of top opening~~
~~W. opening in S. wall is very wide~~

This was depressed north across on
 either side & may have been dry into
 in search for water (Water?).
 Excavation made in place at foot
 of ground showed little depth of soil.
 Do not have record with rock & due
 to 45-70 in. then black with
 very irregular surface. Shows at
 bottom of rock, fragment of
 human skull (skull?), below
 curved leg of type wood. Said
 (July, last) & now buff color, but
 now thin & faint. One of figures.
 On second excavation close to
 long rock was higher, 40-50 in.
 This also same, mostly same.

long & wide, a few with evidence
 of feet.

April 1

Notes from diary. 8 stated near
 (p. 2, 4, 1, 2, 3)

One "case of 8 apertures" in
 series, all found a low his city of
 present-day. One of these series
 greatly, but greatly improving, will
 be given. One series of 8 or more
 only 6 or 7. But against all the
 rest which is white. One at center
 and one at edge of the latter of
 only 2 or 3. One series was found
 at the same place.

23.

Saw dirt no. 100m up over debris
 not out corner of room. I left the
 debris in W. ash log until
 saw no. 100m, although not
 what he. Down into center, a
 trunk leads to down ditch is now
 exposed. Well made, a well on either
 side of the middle door. Central
 room is well furnished with high
 rock. I saw a mass of stones
 fallen. Saw who had been picked
 in the back in and. Probably
 large of it, see well. Probably on
 either side of Palmyra. bed
in at back.
 The decorative beings of building

✓ 24

of outside are not found on rear side.
 A trunk leads across floor to floor
 top of staircase (?) to down which
 was found. This is lined by wall on
 either side. Do 3.0m of trunk is
 only about 48 cm below floor level.
 Do 70 cm wide, about middle of
 doorway. Entrance is 20 cm wide
 + 100 to 105 cm high. At bottom
 of ditch is 125 cm floor of
 trunk since a step composed of
 small stones in doorway is 20 cm
 high. Width of wall, doorway
 ditch is 82 cm. I saw of trunk
 connects all walls, parted. After
 down stone inside as there out

~~Still debris is about 40-50 in above
level of step at door, uneven but
relatively flat. Small area of
Pebbles type at back, against
wall 6 in front of door.~~

Several trenches were run up front
of terrace + several steps of large
width. runs led into of small blocks.
4 in or less in front of e. door,
width 45 (center), 45, 45, 70
(center), length 35, 35, 35, 45.
No more found like front wall shall be.
One other face just in of main line
30' step just below entrance to house
only to block. width is 27, runs
25-30 Both uncertain

Thursday April 7.

6 run. Sheds found in debris in
trench on nearly large that, typical
usually come first, thick runs, etc.

~~It is 400 ft from height of
further fragment, stone of roof in
rest until wall to floor, about
500 ft higher part of house at
front. Inside, small room,
trench continues across floor to
other side, but floor is at least
with stone step at entrance. all
height up at other side, level of
wall is more long but same
height as large runs outside,
with long trench of less height.~~

✓ 27

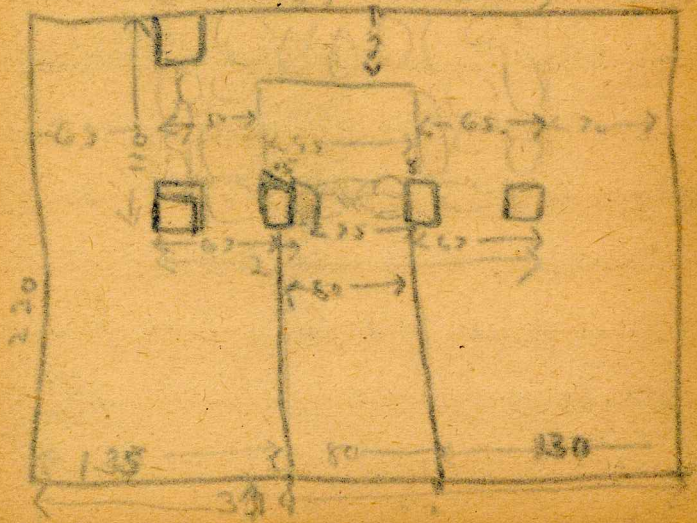
fully height of wall of trench outside
 of inner height of sill. In above
 at the wall into a ledge this is the
 inside, which is slightly wider than
 trench. There is a full, full of stones
 of large broken bits, most of them of
 different shapes, some but all large
 some red ones. See with typical
 wide bodies & flat ones, some
 with one of one or two or three
 round. Probably capite bits. Shows
 after noted & mixed with stones
 & dirt. Probably irregularly capite
 & broken the by full of matter. On
 left hand corner are holes in wall
 but small, but deep & closed

✓ 28

Notes on inner wall. Greatest
 length e. & w. 3.90. (1.30 + 1.35
 to distance .80, distance \pm 3.95)
 Floor is 25 in above sill of
 entrance, but floor of trench is
 of same wide sill seems to be
 much lower. No solid floor, but
 shows fine in inner trench below
 level of sill. In width of wall 220
 in. After stone work measures
 just 2 in. deep feet, 205 along
 back & extends out 110 from wall.
 4 large pillars at front. 2 in
 pillar stones about 20-25 above
 floor. Primary between,
 thick. But not wide about 40 in

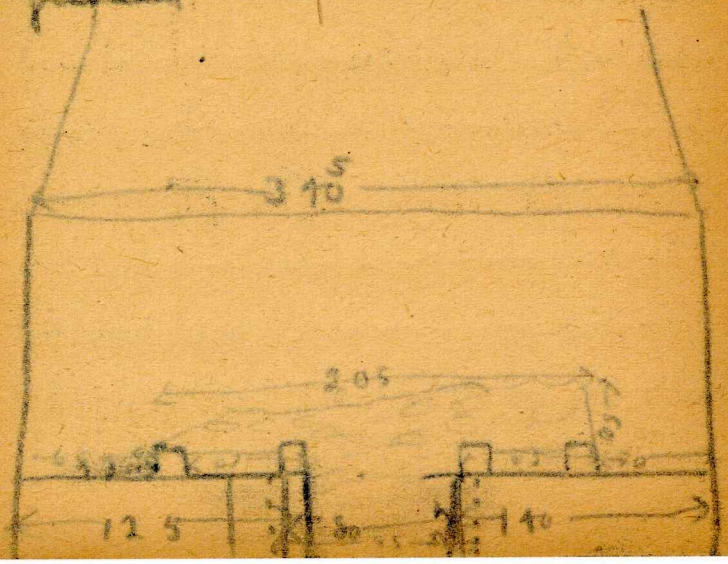
wide & low, making narrow walls
 to e. w 65-50 on thick. Back
 wall against wall of room 40-45 on
 thick. Back wall fairly good, but
 not fine, rest wall poor. Depth of
 work back to front, a to 5, depends
 to determine as widths of columns
 depends on wall position. About
 45-50. Joints of column 105-110
 for feet wall. b. w. walls of east
 side 8 to 15 on set in for
 side of wall column about 75 on
 apart above T and under
 about 50 on wide. T of of door
 is 65 on of floor set in position.
 Room is 55 to spring of arch.

Width is 142 long, 33 thick,
 85 wide. Ceiling 270 above first
 floor. All sides starting, a slope
 of roof also for about 150 height
 300 on width, a 4 long slope.
 Although alter is 65 for 2-70 of
 a wall, roof slope is due e. wall of
 alter is about 23 on e. of w. wall.



Friday March 3. Down ~~to~~
 pillars around 22x25, 17x24
 (single brick) 22x26, etc. None
 at n.e. corner. Depth of corner
 or ~~interior~~ ~~thru~~ ~~at~~ ~~corner~~
 65-70 high, less about or but
 with sill at door entrance, just
 about level of rubble floor near
 side, so 60 or so for the sill at
 main entrance a 25 or also main
 floor, but below level of top of
 wall at back. At least on
 smaller stone was than out,
 probably equally, start on top of
 base at front to make parapet

Side walls are much damaged, but
 show stone on floor at n.e. corner
 which, that end wall was equally
 high than rest of wall. Pillars
 like those found in temple in figures
 42. True height of wall at n.e.
 corner against back is 65 or above
 floor. Walls evidently built bit
 flatter.



~~from~~
 to all compact layers of small slabs.
 Floors & walls well plastered & hung.
 Much was covered with large stones
 & for 2 feet above of some wood,
 & upper beds, probably of the same
 Old type. Filled with small stones
 & lime dust (possibly ash). Some
 charcoal. Ashes covered by it. ~~is~~
 full of dust & charcoal.

Saturday April 4

6 am. Later well standing by
 at S.W. corner, fallen slabs
 slip, see, 80-85 rods. Blocks
 of all sizes but nearly rectangular
 and flat. Faces of surfaces are
 shaly. But many are bits of small

~~from alternate~~. Projecting ledge
 above. Possible door in m. w. corner
 2 feet at S.W. corner, looks into
 east wing a foot. Run across at
 back. Certainly a door at rear
 but not sure which back by great
 tree. All fallen lined at front,
 probably 3 large entrances, see notes
 above. Later. At S.W. corner is a
 ledge it has side side about 6 in,
 has composed of large blocks, some
 not a little. At height of 330
 above the ledge is a broad terrace
 some large masses of blocks
 than slabs, at flat, extends out
 30 in. There is a series of smaller

Width of capstone of altar and
30 cm. In capstone to spring of
and 115 cm. a side = 125 to
ledge on east.

On S.W. corner of block, altar
found: On west side blocks of
mud continue down for 45 cm. &
then on the ledge of slabs resting at
roughly level for up to 25 cm.
Rubble like the total height of
the wall there, today $45 + 330 + 45$
 $+ 115 + = 535$. On south part
four mentioned. At corner a
ledge 10 cm. below ledge to be
resting at 20 cm. lower block
below the set out to equal

distance, but this variation may
be of feet below level of room floor
The wall is in a W. corner
670 for S.W. corner.

On the roof above small chamber
is a small room, probably a roof
chamber. Floor is relatively level
but on trace of level floor. In
many places as flat slabs but not
thought. I fear to pull the up
edge deep as floor is due to
roof edge of room below. Measurement
base 295 e. - w. by 220 wide.
Wall straight - vertical for 20
cm. on the sloping on wall + rubble.
Height stone on wall 100 cm. high

~~and 200 ft from S. no. 35 for W.~~
~~well. Well not destroyed. There is~~
~~a drain at floor level on west side,~~
~~which indicates that the room was~~
~~not roofed (drains for 500 ft~~
~~is to 120 ft or less well stopped)~~
~~the this is seen by a very recent~~
~~date. (With date indicate that~~
~~it was blown by wind. Perfect)~~
~~Beams down length of room~~
~~below. D. well not destroyed by large~~
~~and, but apparently, small, and~~
~~well thought. Both are well~~
~~fully, one small & perfect.~~
~~Star of floor is set in that~~
~~shallow trench for beam base and~~

~~16 wide range of room for 30 in.~~
~~slight, date, star on floor. Drain~~
~~is set 1 in from inner wall to edge~~
~~of large hole in outside, in~~
~~quantity 72 in. through wall. (The~~
~~is of floor for star top of star~~
~~being to little of roof cap frame~~
~~below is set ^{W. of no. 77} 45 ft from. Lots of~~
~~stars found in other of the club.~~
~~One stone floor at 70-80~~
~~below top of pillars at foot, & 10~~
~~25 in below side. 2' low of stone is~~
~~found with star slab of masonry~~
~~very light. Still on a long star~~
~~is relatively straight feet from~~
~~in floor level, & well down at end.~~

southwest room. Depth was very slight,
60 cm, near actual slight standing
wall, slightly greater near corner of
foot wall sloping outward, 90 cm.
Probably deepest in W. center of this
room and depth (1.40 m) in S W corner
also well is slight. Few large captives
were found & none in full or actual
position. Excavation by cables, which
might account for lack of depth, but
not for lack of captives. But in
fact of actual room depth is much
greater (over 2 m. at ^{least} west side)
and more captives, many actual in
actual part of room. (Probably from roof
corner?). Slighter for slight

excavations. One in W. room shows
no least along actual wall, but depth
then in S W room (1.00 (at wall) to
1.20) slight & filler back wall.
One in E room (unexcavated) &
very marked depression in center, but no
clear evidence of four excavations or
system of debris. All walls lower
back in middle of W. wall. Even in
this level depression had a much higher
than in S W room. W. all debris
scattered & no study in survey, but all
debris much higher than on W. side. ||
There is no place where captives
might definitely come to be in place,
i.e., top fragments, sloping by found

out, as in proof that arch did not
cut into up to joint. But also no
evidence of hole for beams.

The inside of vertical timbers well
finished, a ledge of stone is
against wall. Timber is built up
against wall and beams in it. They
are cut below the surface 113 for
east, 120 for west, 195 long, 15
wide, feet top 190 for top of
wall. Distance between is
152 and with side wall 160
for full wall. There is a ledge
on floor level, on north side. This
floor was ledge of wood & painted
red in color floor. North wall is

8.5m thick. N.W. corner is at
higher level. At corner edge (wall)
with side of wall all inside arch is a
sill 26 in high of heavy, small
stone with flat top of a wall. There
are apparently no small high [Pillars
up sill on door stones to which
built built & four or eight blocks
on floor of track about same height
inside & outside. (After laying roughly
rectangular blocks with flat tops.
Also built vertically, but not at
south & west of track in front.
Probably a bit additional.

That of building is difficult &
probably not symmetrical east & west

about certainly a longitudo or terrace
in front of front wall. Along s.w.
front wall is 55cm or from tall wall &
about it same line as extension of
outer ^{line} front of masonry in central
section of s. wall.

~~In central trench, outside, masonry
There is about 50cm level floor of
rough, rubble floor of trench facing
plaster. A second floor struck at
18 cm below this. In central section
was the central wall down & south.
This floor goes under walls of trench
Plate of upper trench floor, up
central wall, & rest of walls
was later level of upper trench floor~~

but up as far as ^{now} lower trench floor
a bed which interesting, well set on
this. Second floor 60-65 below
trench top.

Edge of front longitudo is continuous
Was probably destroyed at s.w. corner.
Upper layer was mostly gone but a few
large stones project under wall proving
that outer walls were built on this
longitudo level. When pulled out they
show rubble fill with interesting.
This reverts again that outer walls
are later construction. Apparently a
plaster floor outside this, at average
level of 25-30 cm below former top.
Barricade walls continue above this.

house. No certain evidence of steps
in front of west entrance. Bequette
edge continues to corner of trench,
but stops at both corners of trench
must have the level of floor of rooms
I really destroyed, possibly steps on
roof at corners. Traces of plaster
floor in the section slope down -
either tattered by fall of wall or a roof.
There is a step at the foot of
Bequette crossing in floor of trench.
Probably originally at level of top floor of
trench. Plaster facing on front of
step + probably below. Large walls of
trench continue S. of lower Bequette
+ step. but much destroyed. Possibly

fairly step through terrace. but
for 110 m on W. side but zone on E.
side. Bequette edge continues east for
975 m, now distance is west. 50 m
high in places. Good east wall at
entrance, but entrance at a distance
into Bequette, but on E. on east side
both wall much destroyed but only
back 55 m from edge of Bequette
(30 m at corner - wall probably forced
out. West of S.E. wall about 30 m
from S.E. corner, about equal to S.E.
corner wall. East wall still fairly good,
fairly destroyed by water, possibly
entirely fallen. Both ends zone on
destroyed. But one small piece in

much like floor. Bourgette also
 mention has a broken thing. Well
 actually you or destroyed in excavated
 section, though completely right for.
 I see at all it extends to above
 marks find stone, much fractured
 (hard?) with water, between a
 and very light, white, fragments
 only 3 fine jointed shales. Find a
 level in room, as expected, about
 same as found above, about 2-3
 cm higher. Some yellow stones
 next about on level with floor of
 trench: also level of above.

Tuesday April 7. On trench in
 above, floor is just like floor of
 above made for 90cm from N. end
 of wall, 160 from N. end of above.
 About 5-10cm from inner wall
 of room. 10m from S.W. corner
 this wall, wall of Languelle is low,
 40cm. The top level of floor of
 room is one layer flat jony flage
 probably see other, now torn out, even
 with level. No evidence of stucco
 in fact. 17cm roughly flat stone
 jony level inside room which is 4-8
 cm thick + rest in floor just
 below of south wall about 55cm
 above top of trench, level of above.

floor. This floor can be followed only to near (at quite) outside all of building; finally we thought enter trench but not found, only the corner by stone of fence & all. This level is apparently about that of 2d level for the 2 in trench. The front wall of this floor is a trench floor level at about 5m, probably the front fence, and another at about 60 cm, a thin, etc. no fossils were seen, at 3 m lower. This level is the front & part, which with much charcoal only at. The front wall of the chamber is not straight

below the level of the trench wall, but low blocks frequently interbedded though not strictly bedded. This indicates that trench is by way of some construction & trench is later than building. 3d level trench floor seems to be missing & looks that just a foot of dirt & earth with scattered small white fragments.

To return to front building wall. Of irregular ledge on building is allowed, at level just below top of trench, which is straight wall right



be supposed to depth of 42 in on
 east + 60 in on west, but irregular.
 The on fourth trench level 2-3
 on length but 3d level. Fourth
 wall goes down to depth of 40-55
 in on west part of room 60-65
 in further north and, as before noted,
 rest on 3d level which projects
 under walls of trench. Beneath this
 is reddish earth or gravel fill.
 It is thought that the bed (found)
 under the trench, is supposed for the
 other that the west floor does
 not run up against the edge of the
 trench, but continues under it, with
 a trench being laid upon it. This

level is same as level under chamber
 after under paving stones. Fill
 under it at entrance.

- Revised note on levels: (opposite 5)
- ~~1. upper, from surface~~
 - ~~2. 10-12 below, from surface~~
 - ~~3. 30 below, from surface, with
 thin of gravel, all of trench
 Just under paving stones of chamber
 east end of 2-3, the corner
 letters, etc.~~
 - ~~4. finally, below 3, a scale 2,
 8 in under 2, and at 7, under 3.~~
 - ~~5. 10 under 2, and at 7 under 3
 Probably goes under all, like 4~~

57.

Wall of central building does not
 extend beneath these floors. Under
 level, edges of floor #3 with mud
 bath may be followed, but floor in
 center of trench difficult to find.
 In southeast sector of building
 west floor was found outside
 longite at depth of 70 cm from
 present (4 probably original) top
 of longite. No shale beneath a
 plaster destroyed except close to
 wall, no difficult to determine
 width. Probably indicates steps
 pyramidal on slope with steps
 70 cm high & probably 55 wide. /
 At S. end of trench no steps

58

or floors could be found S. of step
 at trench entrance. / In trench
 inside ditch as found some floors
 as outside, although they were not
 found in center of trench below
 level. Probably ~~steps~~ ~~steps~~
 1 is level of faced stones,
 2 is about 50 cm below wall
 3 is about 56 cm below facing stone
 which often met on clay. 4 meets
 wall at angle. 5 very level & true
 of agent, wall at 65 cm. 6,
 3 white lines of agent, wall, is a
 little higher, 62 cm, & level to top
 line. Last floor is 4 (65) +
 with little beneath that.

✓ 59.

As entrance to nich is reached,
with more or less floor 2 or 3 in
may lead + red, indistinctly, but
All details make for the section.
All floors below not found, probably
because of last section, but probably
make a little further out on
edge. First floor can be
followed well. Upper part
strong, at entrance as much colored.
Little flat stone probably there.
Stone joining shows as much
colored + broken. Above the are
dark stone with especially good
wall of 2 stones. The at level
56 below w. trunk wall, so below

608

top of w. floor + 12 below the
bottom. The first floor stops
at their base, i.e., they were
there before floor was laid.
Barely down section in
section 108 in, about 15 below
level of first floor, though white
floor + stone (hard? red?)
to red with white + found in
outer trunk level of last floor.
Begin to excavate high floor
of more or less side. Plaster
must broken here + with very
soft in center. Probably several
floors in first few in, but more
entire. Lower down full of

typical fill, large + small stones +
with them on.

Shards in ground diggings
almost all large + made with
flat coarse paste. B. 3 or
4 ft. B. not in earth but
floor of trench they are thin
+ fine + often colored. In
some generally large, sometimes
with extremely thick rims up to
3.7 cm across, bodies .7 cm
thick at 6 cm from rim.

Most of our work all day on
ground of stela 12-15. Very
much fill + hard to see.

Wednesday April 8. Temple on
top of pyramid of stela 12-15 is
very much destroyed. Only an
wall + a few cones of plaster
or. sl. W. walls much fallen
but appeared after considerable
superficial excavation. Probably two
parallel rooms flanking a part, but
only back discovered so far.
Temple covered in fine mud,
though probably almost in sand
level is level standing level which
was considered as being south.
Room wall fairly good + intact,
yet to be removed, but in mud
of course is filled from top to bottom.

Room will be examined externally
 later. Thickness difficult to
 ascertain as it has no well preserved
 doors, but apparently about usual 80 cm.
 Well constructed on faces but interior
 full of rubble & also face has fallen,
 wall is pulled out in many places
 interior, etc. Length of room 7.50 m.
 Very narrow, about 1.10 m. Both
 walls fallen forward in some places but
 with very little difference at base of
 room. Full of large stones & many caps,
 flat, thin & large. Near center of room
 against W wall interior are a number of
 slabs, large & rather thick, perfectly flat
 & piled up flat, but probably fallen.

They will probably be left in place.
 A door is in center of west wall,
 probably leading to next (front) room.
 Very narrow, 65 cm wide, top fallen,
 lintel probably broken & it rotten.
 Probably is a door leading then
 back wall at N. E. corner, but
 details uncertain yet. Walls on all
 fallen forward (W) & gently
 destroyed. Very thick walls & have been
 pulled out in many places in
 inside for fallen roof debris.

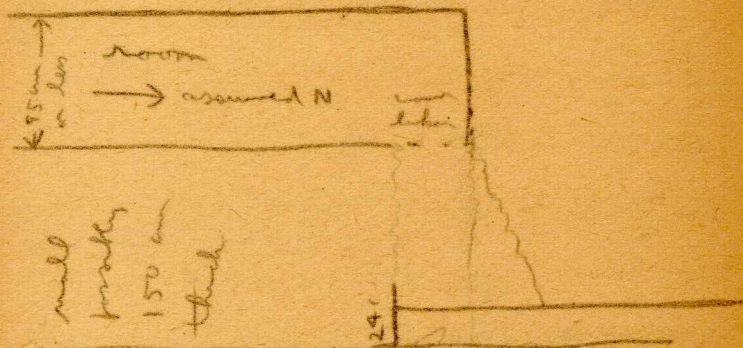
In small chamber of dark room
 Plaster floors for 13 cm from
 last, then rubble of small stones,
 then soft earth, & cement floor at

40 in, same distance as upper
floor outside. As destroyed near
wall of trench

Thursday April 9.

6 men. I took Acopa over room +
of Gustava Ring at head with all wife.
Walls of temple are very thick & full of
rubble interior so that if facing is
fallen, walls are pulled down while
descending without entering them. Measure
middle longitudinal wall is fallen from,
fully filling front room & had to
find near top. Rear wall was
scarcely lower, little by fallen debris &
slightly excavated interior, lot was along
back of rear room. No structure in

central part. To be noted by ruler
fully refused to slope at S. E. corner
which is probably merely debris as this is more
back in wall at this point. This being
examined. At N. E. corner of room
a back in wall suggests door but
fully out. But apparently a slight
indentation in outer wall face, 24 in



At depth of unknown height above
base of wall, lot 250 lbs present

now. height of wall is a ledge about 15
cm wide, all plastered blocks, with
curved bottom edge, which follows much



Further north (11) ground level is much
lower & consequently lower parts of outer
wall uncovered while upper parts are
fallen. Presumably originally construction
was same at rear of main room, but
not uncovered so below level of ledge.
Rear wall extends on to 335 cm beyond
with ~~the ledge~~. At rear wall
near S.E. corner this ledge is not at
260 below front top of wall at highest
point. At height of 220 cm is a

projecting cornice of Paley type with
large flat slabs extending out beyond wall
to front distance of 20 cm, possibly
originally more, as wall is fallen inward. //
Return to n.e. corner. Ledge is well
uncovered here, is about 15 cm wide,
and all blocks, especially fine corner ones,
have marked level, & under ones project to
form wall with batter of about 60°

See on both sides of corner. There


 curved blocks large & well made,
 especially at corner. Probably originally
 plastered. 6 ft long blocks
 at corner, 1.05 high, 58
 in in from retired

The north corner face is much

fallen on main inner, but s-w
wall apparently about 230 m. Apparently
a wide ledge was built against the
s-w. wall, but now much fallen or
destroyed by rocks so that original
height is difficult to determine.

At highest point is 65 below main
ledge at top of latter. At 50 m
low, + about at level of base of latter,
wall is a much disrupted ledge shown
by a few rocks stuck out into wall.

Wide ledge is about 70 wide,
top level uncertain, lower ledge
about 15-20 wide, depth
70 below wide ledge necessarily
exists also +



depth at right ascertained. // N-S.
wall of this inner angle quite
different in construction. May be later
construction. Upper country inner
angle destroyed but upper straight wall
shows good angle with bit section of
wide ledge wall. This wall lacks main
ledge + latter but at base of straight
wall of about 3 m max height (only
120 m of red wall show at n.e., rest
is debris + fallen) is a main ledge
at same height of lowest ledge (below
wide ledge below latter) of north wall.
Wall relatively straight below this.
Apparently be steps leading up to
north wall // be construction at s.e.

corner similar. Straight stretch along
back 56.5 m, then west north 20-25
m & then 65 m to a back in wall
similar to that in n.e. corner, but
wall continues below it. Some evidence
of construction, for bricks in wall appear
like opange, straight instead though
this may be retained base of masonry.
But at n.e. corner back is just at
west north side at s.e. corner it is
65 m S. of north. North in s.e.
corner is like that in n.e., just
about 50 m wide (or less) of end of
main (s. line). From north just wall
runs S. for 3.13 & then turns at
right angle west for 1.75. Not

measured deep line. Then again south
along east line of structure for about 2
m. north above soil. Beyond this, all
destroyed above surface. slope of natural
soil or of detritus being very steep.
Beyond this first nothing visible above
soil. Excavation to show later. //
Over the n.e. corner the levels of
soil are apparently in terraces a step,
but too high to be for use as
step. Not intact. Upper level, clearly
noted, 70 m out from latter wall
one foot high against w. wall 65
more length to last stone, 220. Base
of latter wall extends out 50 m east of
this 2d & lower terrace probably at level

of stone projecting out at base of this
 This is largely disrupted - fills at n.
 end against wall but probably intact.
 (effort may be given to it with left
 straight east edge, at east side
 height therefore 65 (or more if within
 tier of stones or top). length exactly
 167 cm. N-S. wall to W. extends
 for 580 from top of wall better,
 470 along ledge of 15 cm width which
 ends against upright wall of 1st terrace
 ledge built against latter wall.
 Wall 70 cm high below this ledge
 & at the level apparently a floor on
 same level as base of lowest ledge
 terrace. This wall turns round corner

and continues across steep slope to n
 of temple on pyramid. T & B seemed
 better. Possibly a staircase here over
 terraced steps. Now big dense stream.
 At much lower level, about 175 cm
 lower than the terrace floor, is a nicely
 rounded corner stone of another terrace,
 about 240 cm. of ²/₁₀ wall of higher terrace
 and 150 cm. of n. wall. It is all very h
 turned for excavation along with slope
 but not along which covered ~~the~~ slope.
 A great hole was made in center of
 rear (?) room of temple at central doorway
 to floor level. At base room is only
 103 cm wide but extremely high.
 Both walls tilted forward.
 between Book 3.

