

Pages 1+2 of letter of
Sept 28, 1921 to be
copied: written by

Pages 2-5 of letter of
May 19, 1922 to be copied &
written by

This list and these notes clipped to it
fixed to photo album sheets which
contains some of the prints (many
missing) LS 1943

No. 1. A stone cistern dragged from the ruins of Xolchun



No. 2. A general view of Aguacatan and Xolchun



Nos. 1 to 11
See Burkitt's letter
April 2, 1914



No. 3. Foothills and gullies of the Kuchumatans

No. 4. Looking down one of the gullies of the Kuchumatans



No. 5. The coffee cart-road coming out of Coban



No. 6. A View of the government buildings in Coban



No. 7. View of a
back street in Coban



No. 8. San Cristobal
and the lake



No. 9. San Cristobal,
the market place



No. 10. Crossing the
Chixoy river on a raft

No. 11. An Indian ham-
mock bridge, made of
rope plants





CHAMA - 1 to 47
See Burkitt's letter
September, 1917

Nos. 1 to 4
Chama- overlapping
views making a pan-
arama



No. 5. Chama
Looking off from
Mount E



No. 6. Chama.
Taken from a
hillock

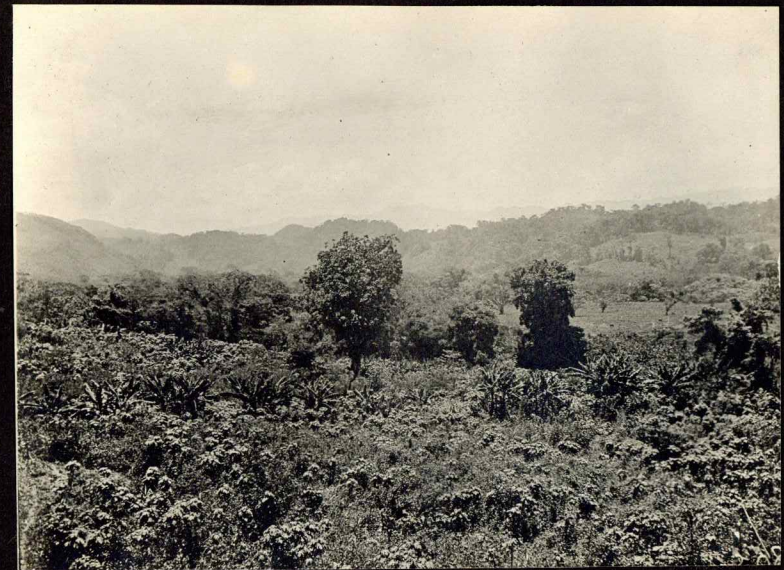
No. 7. Chama.
Same view as No. 6.
Taken long past
sunset



No. 8. Chama.
View from mound A.
Looking down the
Tsalba valley



No. 9. Chama.
The view at the
ferry

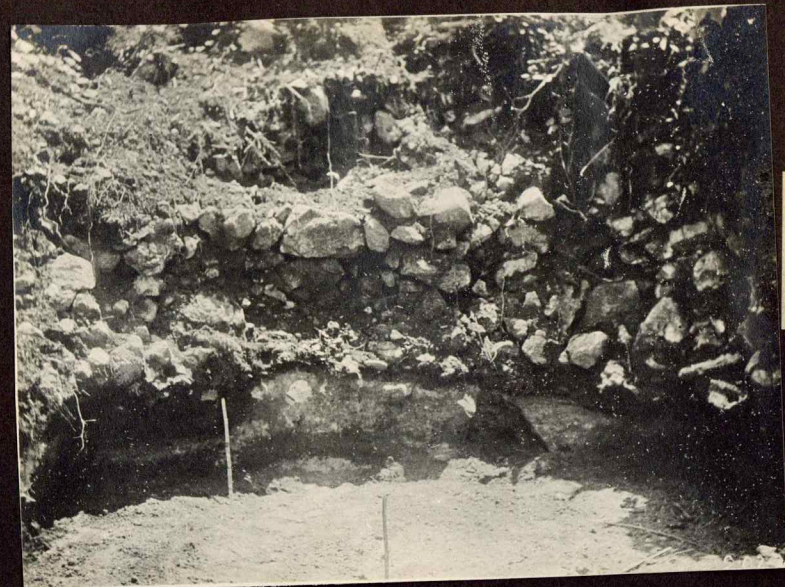


No. 10. Chama.
View from mound B.
Looking up the Tsalba
valley

Nos. 11 and 12
Chama. Over-
lapping views.



No. 13. Chama.
View of the bottom
digging



No. 14. Chama.
The face of the
digging at a close
view.



Nos. 15 and 16. Chama.
Overlapping views of mound
B and its surroundings



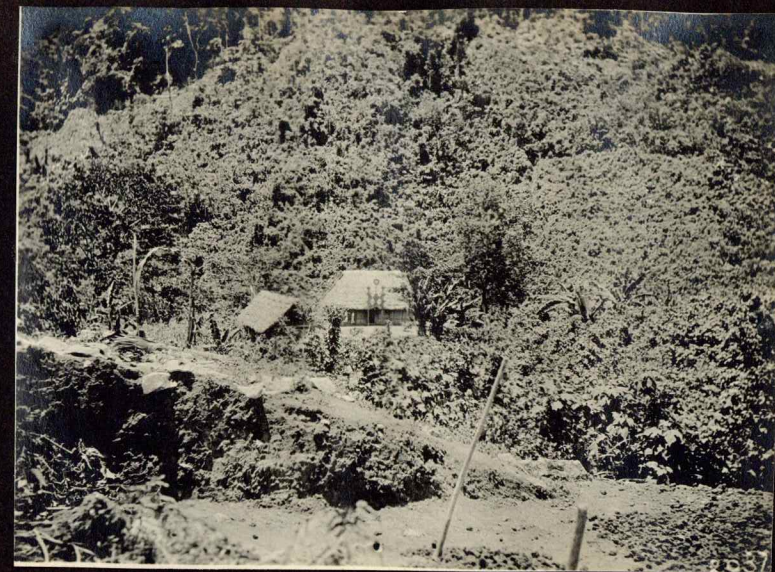
No. 17. Chama.
A pile of stones
represented



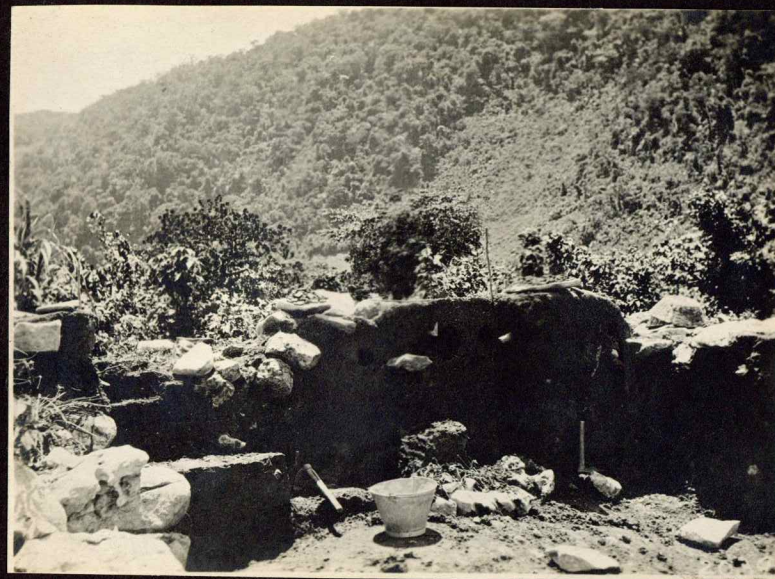
No. 18. Chama.
This photo over-
laps with No. 19.

2029
176742

No. 19. Chama.
View of the walls

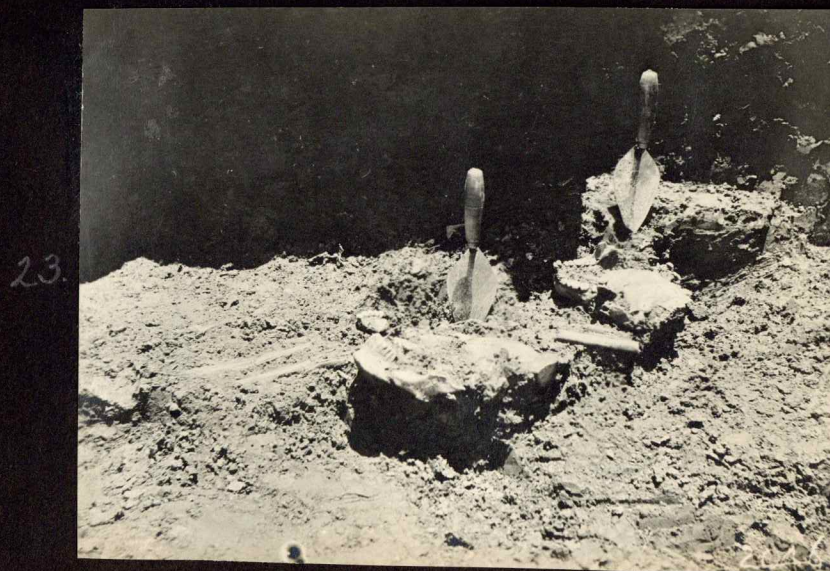


No. 20. Chama.
View of the slope
of the mound

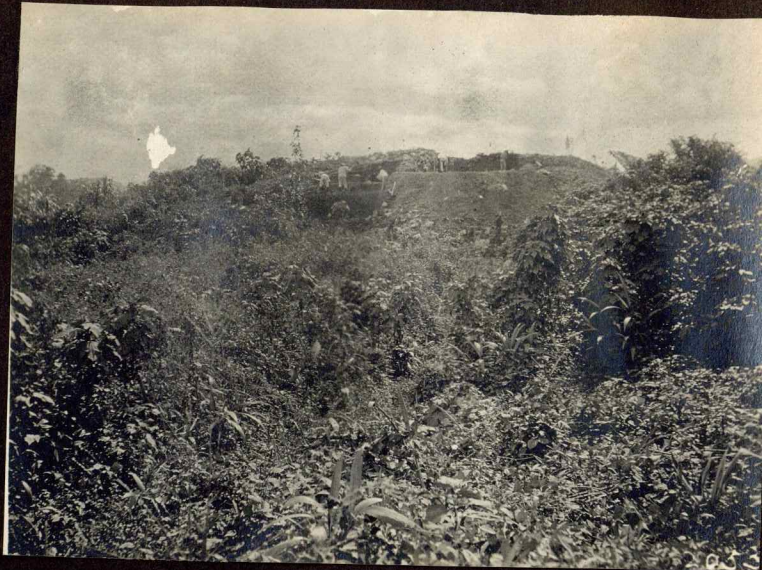


No. 21. Chama.
View, looking in
a north westerly
direction

Nos. 22 to 24. Chama.
Same view as No. 21,
but the cutting has ad-
vanced



No. 25. Chama.
A little pile of
stones. Looking
south west



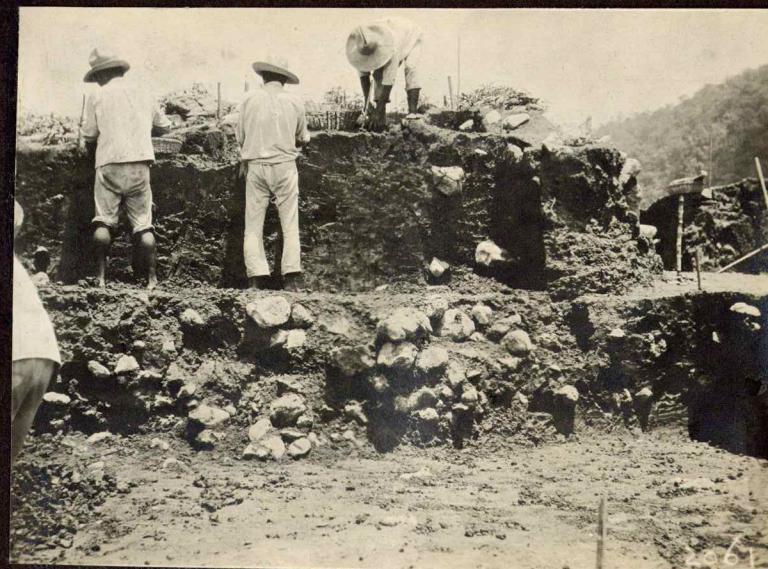
No. 26. Chama.
View of the mound



No. 27. Chama. A
part of the row of stones
and of the stone pack with
it.



Nos. 28 to 30. Chama.
Deep digging inside of
the pack.



No. 31. Chama.
Looking at the
east and west wall.



No. 32. Chama.
Directly facing
the wall.

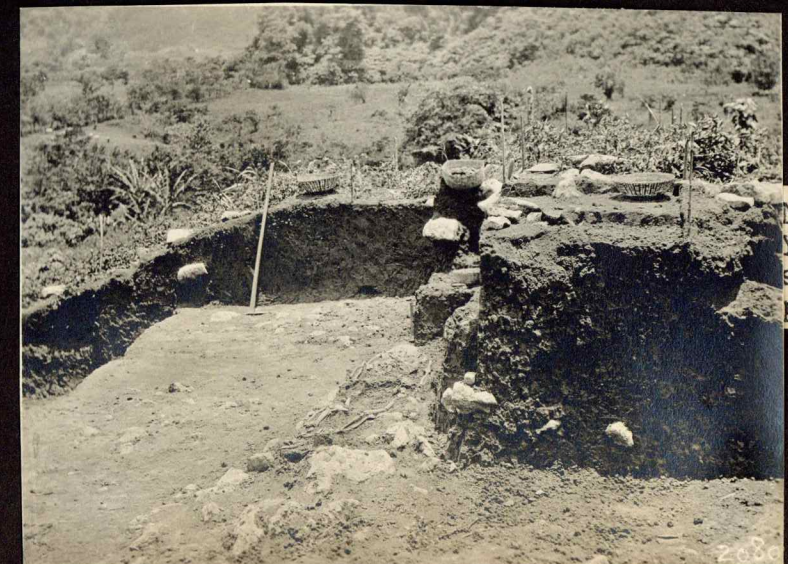


No. 33. Chama. The
east and west wall has
disappeared. The wester-
ly stones remain.

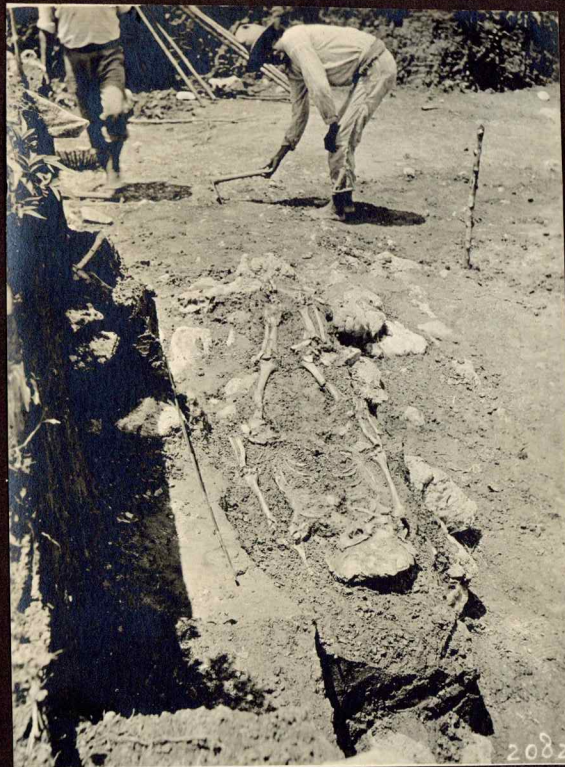


No. 34. Chama.
Looking at the
east side of the
mound.

No. 35. Chama. You
can see the length of
the skeleton.

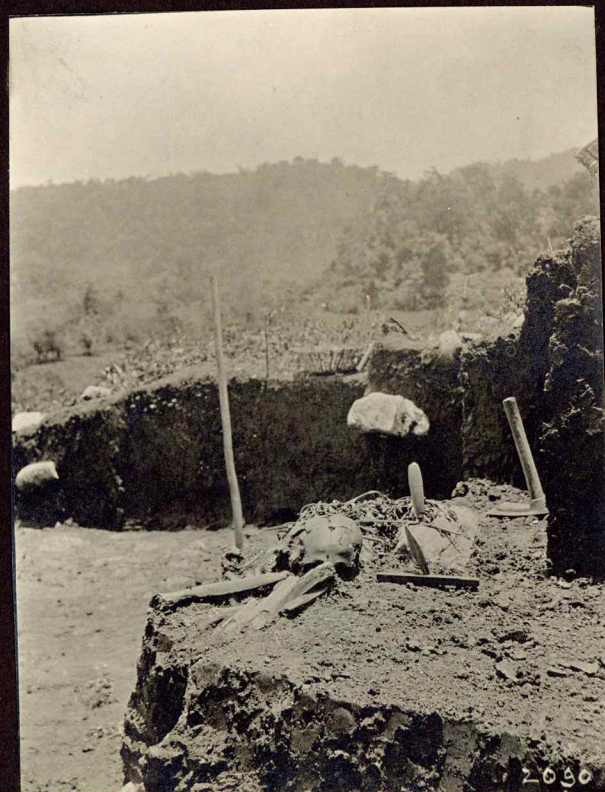


No. 36. Chama.
You can see the
stones of the stone
pack.



Nos. 37 to 39. Chama.
Parts of a human skeleton.

Nos. 40 to 42. Chama.
The greater part of a
broken human skull.



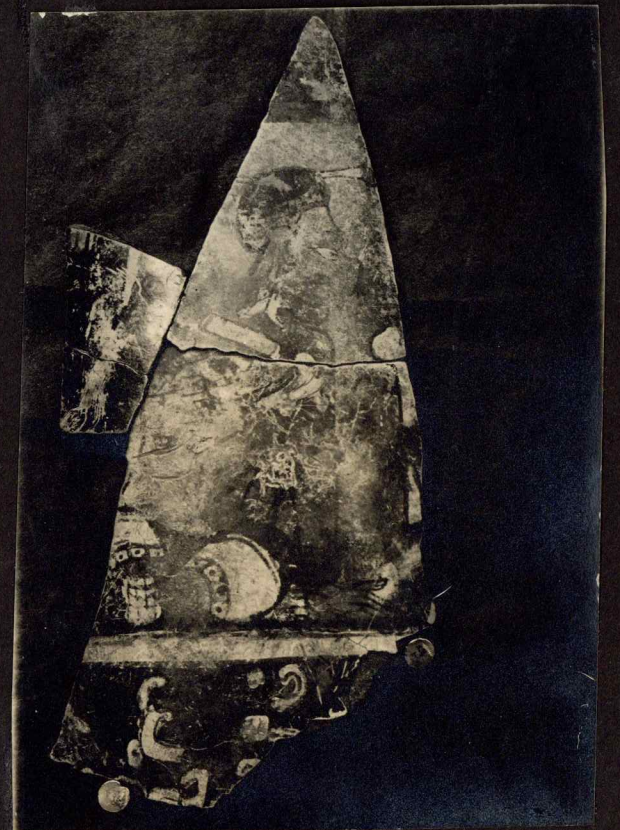
No. 43. Chama.
View of the whole
mound.



No. 44. Chama.
A memorial of the
layers.



No. 45. Chama.
Heaps of unidenti-
fied pottery.



FOTOGRAFS

REC'D OCT 11 1918

The numbers ar thozе on the back ov the prints. An N before a number means that I hav the negativ.

1. Indians ov the Kaabón district. Hot country. The short breeches ar primitiv. The jackets and hats ar innovations. But only three ov the men hav jackets. The other three hav the primitiv upper garment, which iz a square cotton cape thrown over the shoulders. One ov the men haz the cape notted across hiz chest.
- N 2. Indian women at a plantation house: cold country. Indian women ar more conservativ in their dress than the men. The womens dress consists ov a skirt and a shirt. Each town (az it iz calld) haz its own patterns and colours for the skirt and the shirt.
3. Kobán men and women. A married Kobán womans hair hangs down her back in a pig tail: which iz wound round with a rope ov red cotton, ending in tassels. The skirt iz blue, with white stripes.
4. In an Indian kitchen. Two ov the women ar grinding corn. At the right hand bottom corner you see the earthen baking pan, with two pan cakes baking on it.
- N 5. A woman weaving standing up. She keeps the loom taut by leaning against the back strap, which iz made ov netting. The women ar not Kekchí women, but the loom iz the same evry where. Bad negativ: the picture iz plainer enlarged.
6. Indians in a cane field.
7. Indians carrying a planters children. To show the pack frame, and forehead strap.
8. Kobán woman and boy coming to market. The boys pack frame iz in a net.
9. Indians coming from a feast. The woman on the right iz drunk.
- N 10. Kobán family group. Tiburtius Kaál, with hiz wife and dauter in law.
11. Kobán. Part ov a Passion-week procession.

FOTOGRAFS, 2

12. The same closer. Shows many Indian faces.
 13. Indian maskers. The masks and costumes ar made usualy by nativs, and hired out to the Indians.
 14. Indian maskers. A different dance from that ov 13, and different masks.
 15. Hot country: a hammock bridge over the upper Polochík.
 16. Higher up. A planters establishment among the foot hils ov the Shukanép range. See the fairy tale, page 1, note 3.
 17. A southern spur ov the Shukanép range: showing an extra-ordinary number ov land slips after heavy rains.
 18. A mountain village.
 19. On the road to Kobán.
 20. On the road to Kobán.: at the rock ov Pombakórk (which means the roasting place ov pie melons).
 21. On the road to Kobán: passing a plantation house.
 22. On the road to Kobán: horse and rider (your servant) at the gap ov Ululú.
 - 23/7. See preface, foot ov page 2. Pictures ov Tiburtius Kaál.
 - N 23. Two prints. Side face.
 24. Two prints. Three quarters face.
 25. Full face.
 - N 26. Side face: not so characteristic az 23.
 - N 27. Full face: " " " " 24 and 25.
 28. See the preface, page 3, second paragraf.
 29. Senahú district: a small ruin in the woods. See the fairy tale, page 17, note 9.
-

Nos. 1 to
See Burkitt's letter
October 11, 1918



176747

No. 3. Koban men
and women



176748

No. 4. Grinding corn
in an Indian kitchen



176749

No. 7. Indians carrying a planter's children



No. 13. Indian maskers.
Costumes are made usually
by natives.



No. 14. Indian maskers.
Different dance than No.13.