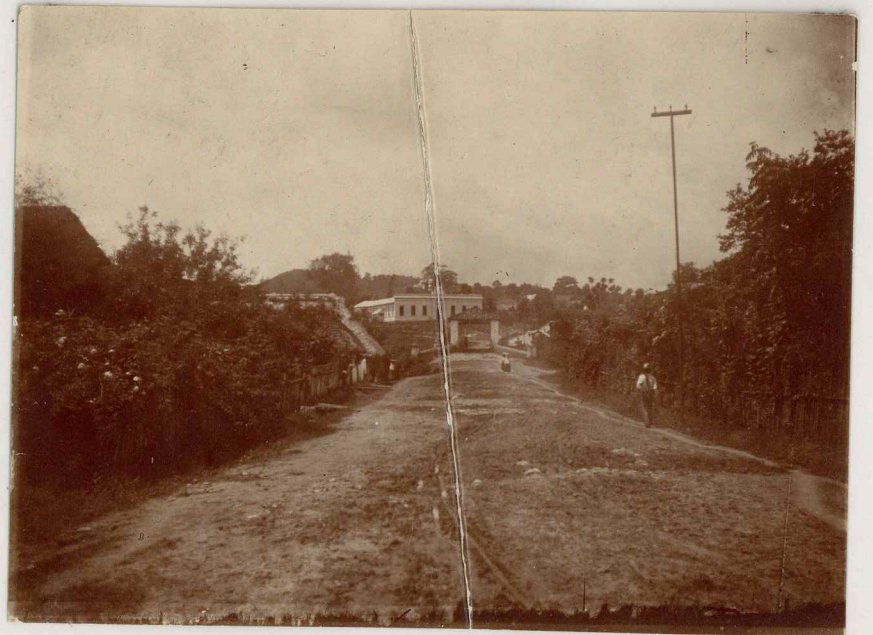
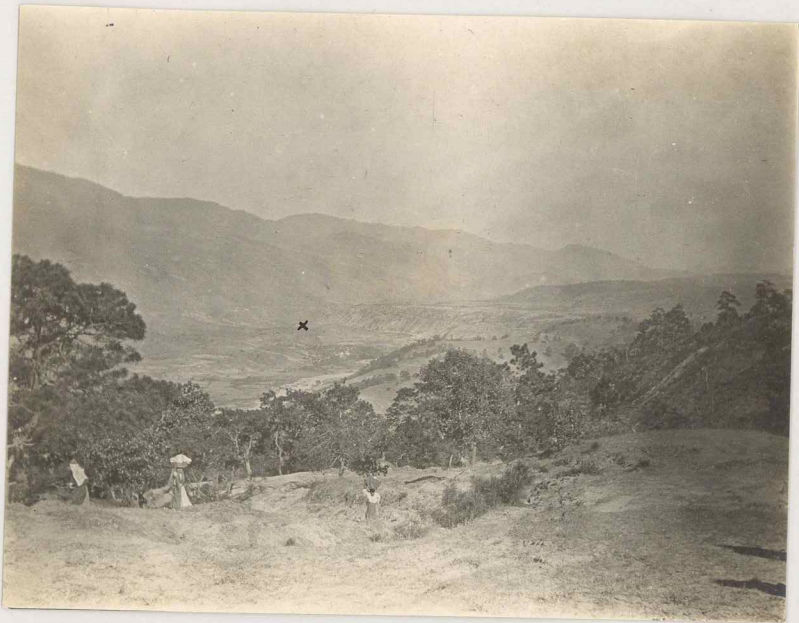


see Burkitt 1914-1915
1914, April 2



p. 39 Catalogue 1116 - 1154

2

Looking towards Xolchún
and Aguacatán, from the West.

3

Foot hills and gullies in the
South face of the Kuchumatán

4

Looking down a gully in the
South face of the Kuchumatán

5

Cobán - The cart road
at the St. Vincent bridge

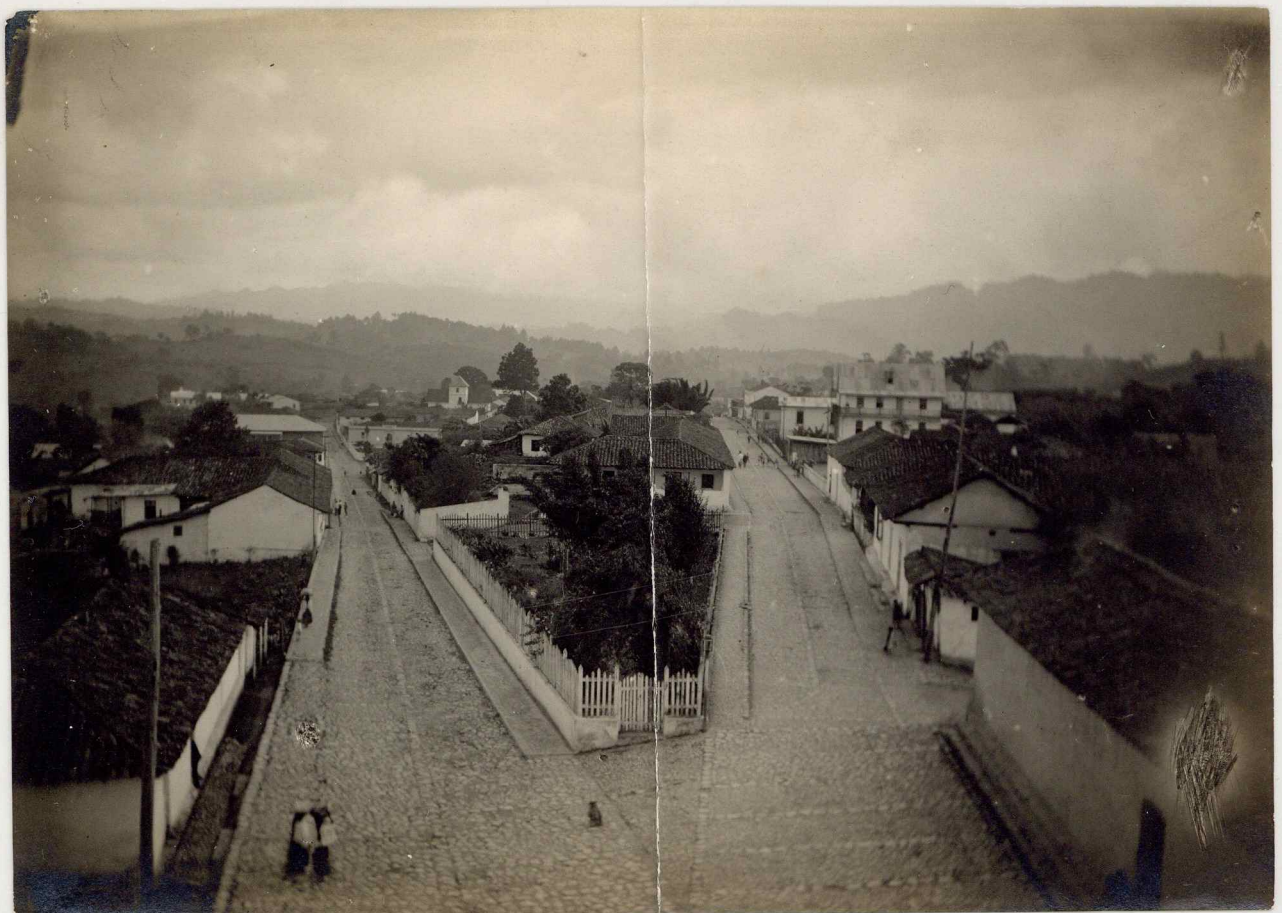


Duplicate of
8.

Product Quatuor
11

11

An Indian suspension bridge
made of rope plants



Coban Guatemala
muddled brown looking

S. E

12

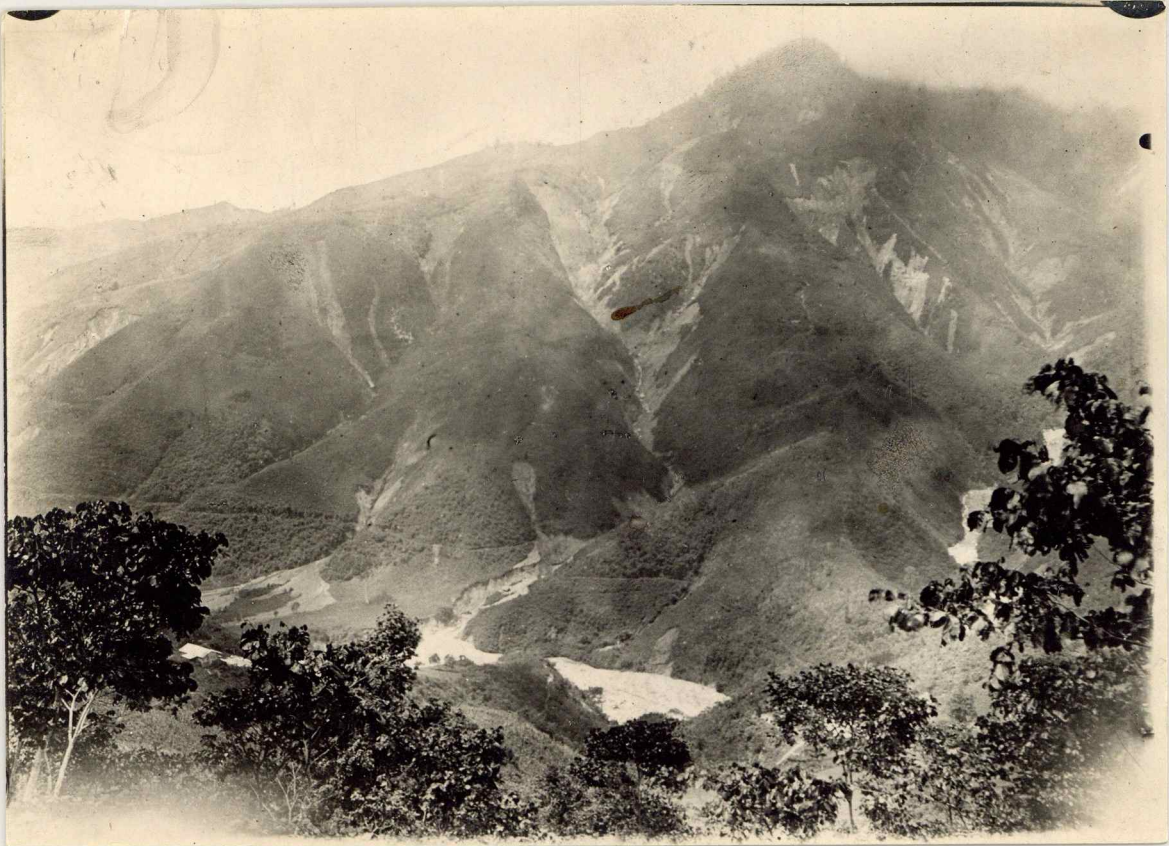
Coban from the
peanga looking
west-

13



15

16.



A spur of Shukanep.

Used Mus. Jour.

9, 3/4 (1918) 280

17

Used Mus. Jour.
9, 3/4 (1918) 280
A spur of Shukanep.

17.

4 7/8"

1

erof



18.

Wood Mos. Jour.
9, 3/A (1918) 276

tree up

35057-6

4 7/8"

Roban?

18



19.
← Make $4\frac{7}{8}$ " wide →
Coban

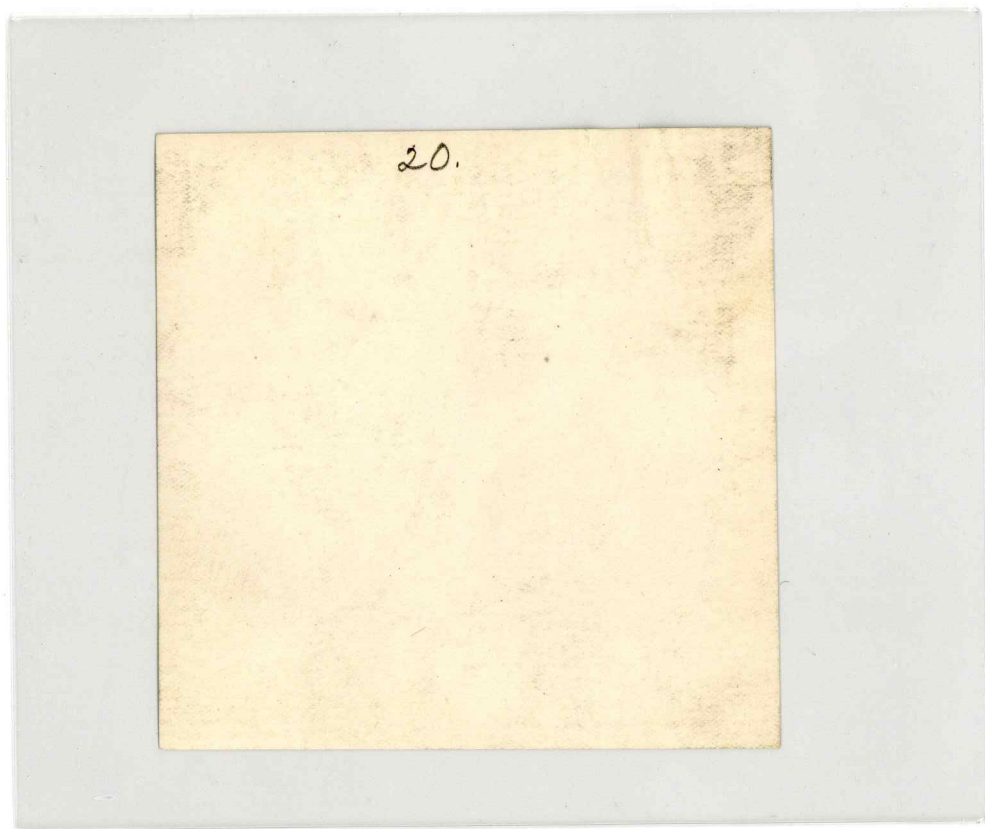
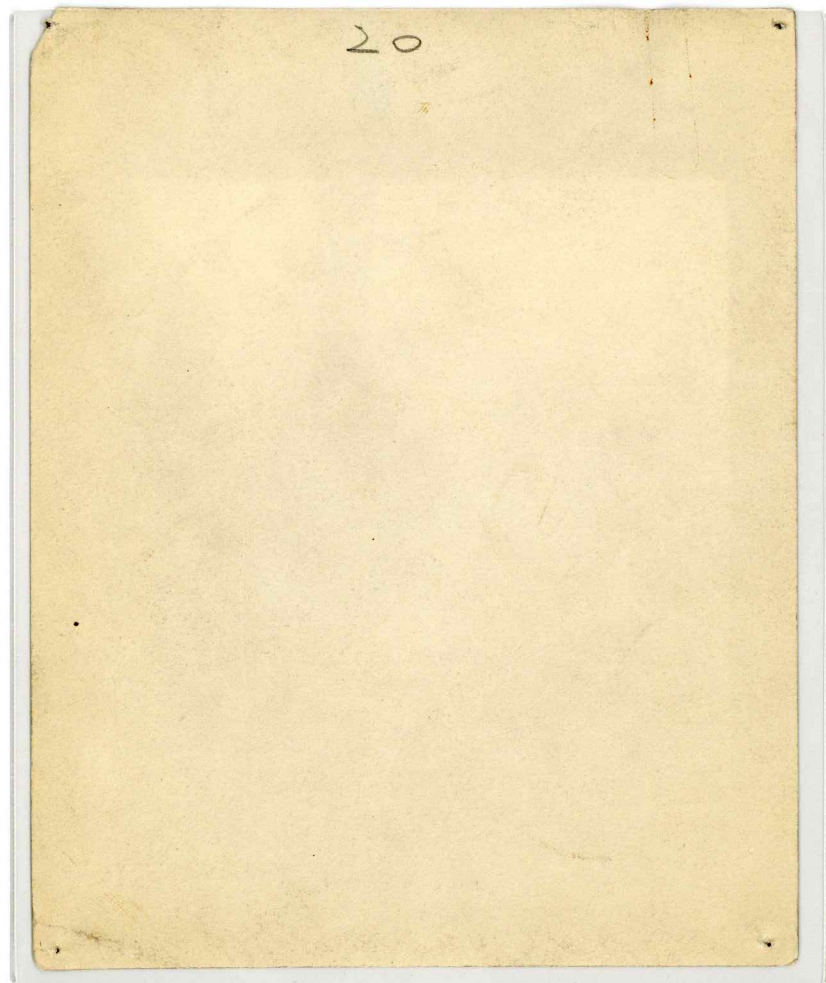
9-11-50
289

Coban

19.

Used Mos. Sov.
9, 3/4 (1918) 289

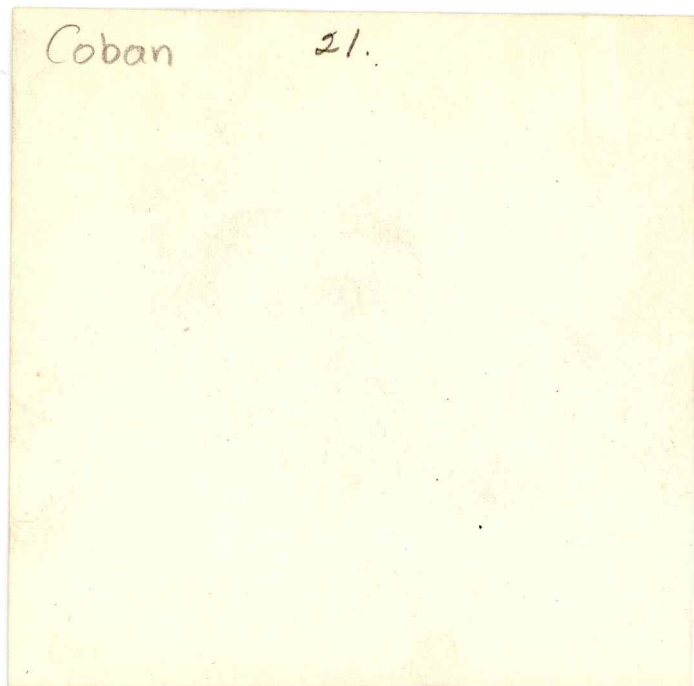






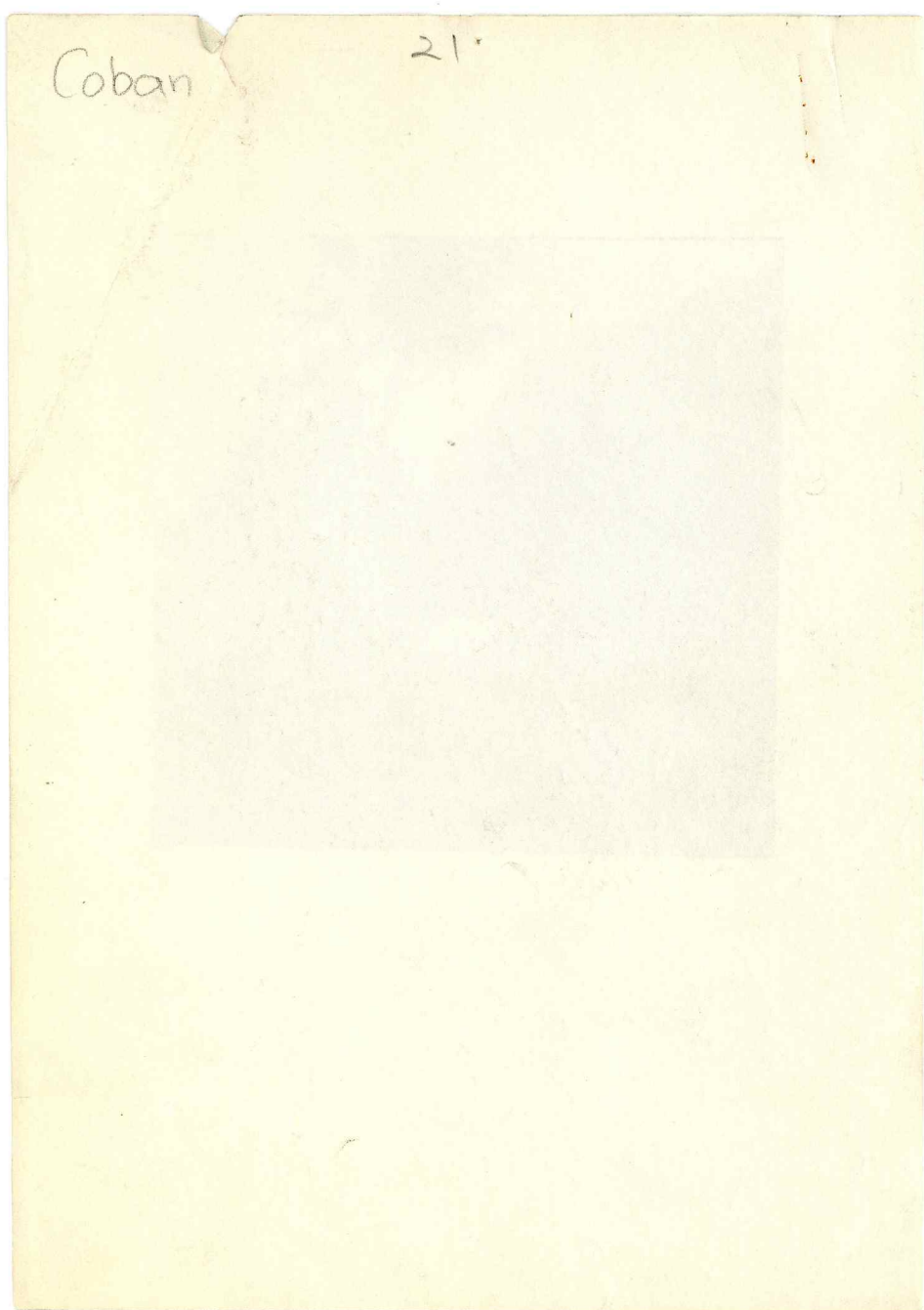
Coban

21.



Coban

21.





22

Robert Burkitt

Used Mus. Joss. 93/10/18/275
Robert Burkitt

neg. 15422