



804-25  
194577



804-26  
194578



804-27  
194579



804-28

Journal 1972, 2nd plate, a. + see duplicate

and see duplicate Mund.



Journal 192. See duplicate print.

804-28  
(See duplicate  
print also).  
1945 80



840-29  
1945 81



Journal 157a and plate 6

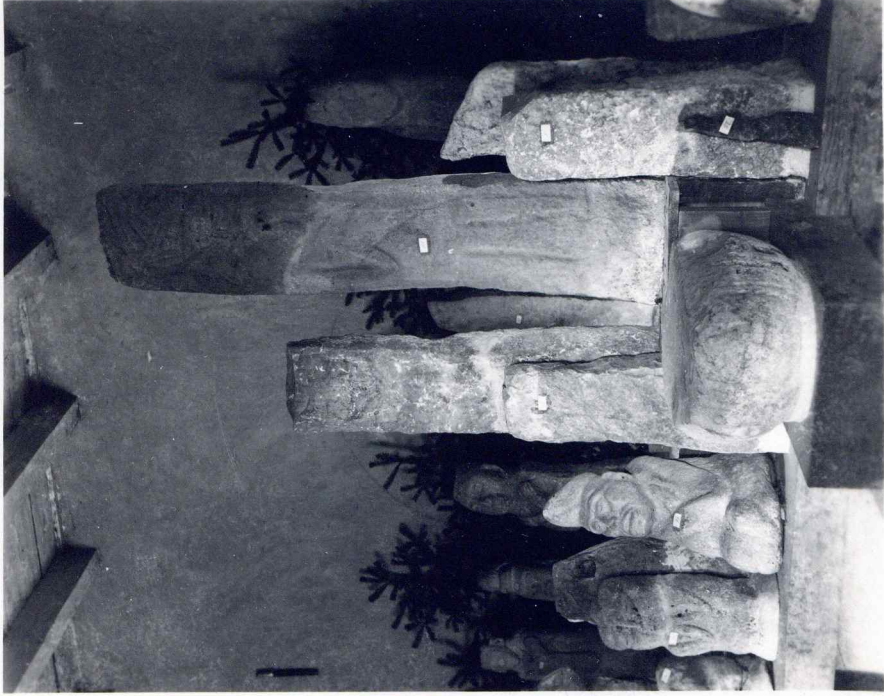
804-30

194582



804-31

194583



804-32  
194584



804-33  
194585



Journal 15/2 1st Plate a

804-34

194586



Journal 15/2 1st Plate b

804-35

194587

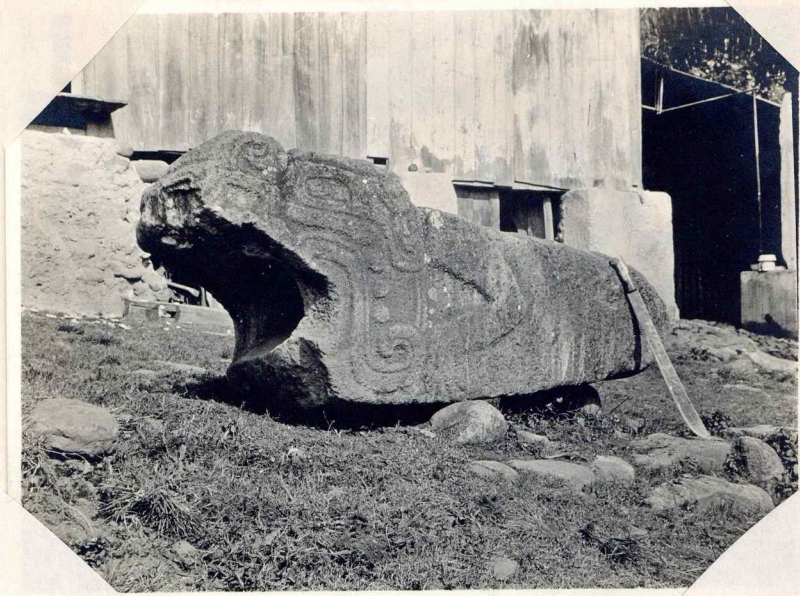


805

1935

Guatemala side of R. Suchiate.  
Near hamlet of San Juan Paminic, a little  
above town of Molacatan. (B. 64 of Cd 805)

1/2 doz Mounds, one 30' high, rounded B. of Chocdã.  
(round mounds: big stones artificially placed.  
This is one of them.  
all stones alike in shape: columnar stones; roughly  
prismatic, with 6 or 7 sides, about 1/2 meter thick.  
none higher than this



806-A



806-B



807

(+ sep  
enlargement.



807