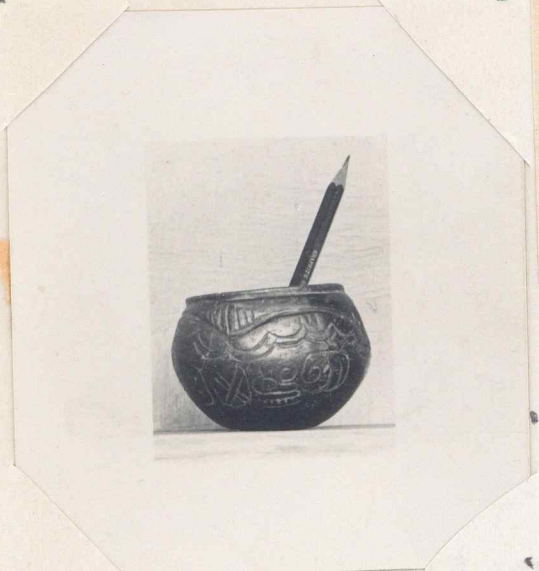


288-326.

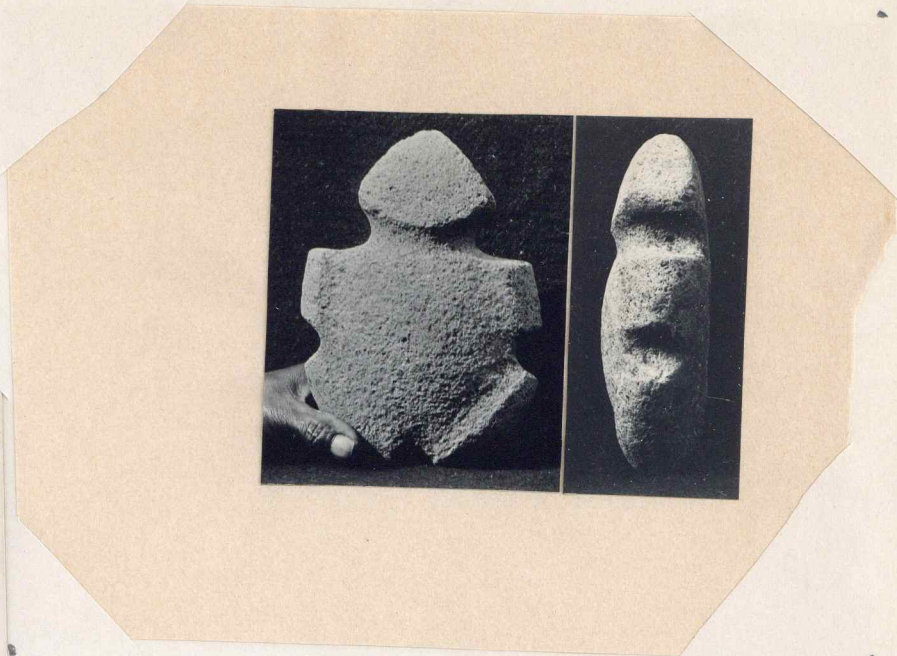
From Buratt's two "bound" sets.



288 said to be from Choculá (1116/54, p1).

This number was obliterated to something else; photo did not reach us; number obliterated anew to this and the subject of original 288 given number 308. (See cat 1116/54, p1)

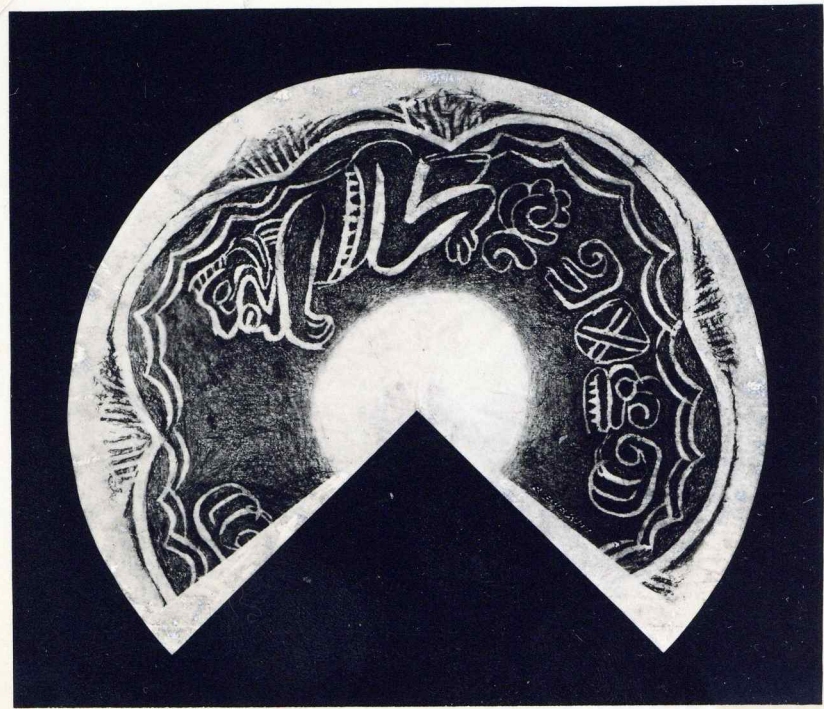
Design on 288 →



290

See cat 1117 (p.3). Mus. 37-12-7. Caballo Blanco, Quetzaltenango neighborhood - low country, 1/2 day

longer from S.A. This neighborhood is along the Ocosingo river.



289



290

See Cat 1117 (p. 3). Ocosingo River region. Quetzaltenango
or Petalululen; 1/2 day by vent from sea ± for the region (p. 4)
round mounds, like chocola.



291

San Vicente. Cat. 1117 p. 4.



92

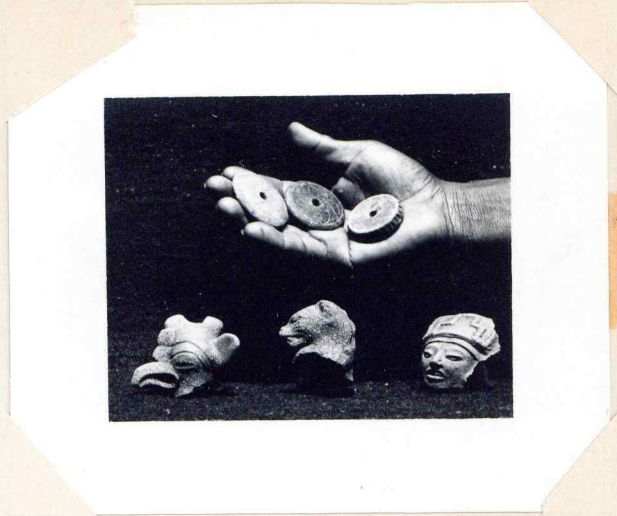
San Vicente. Mound A.

293.



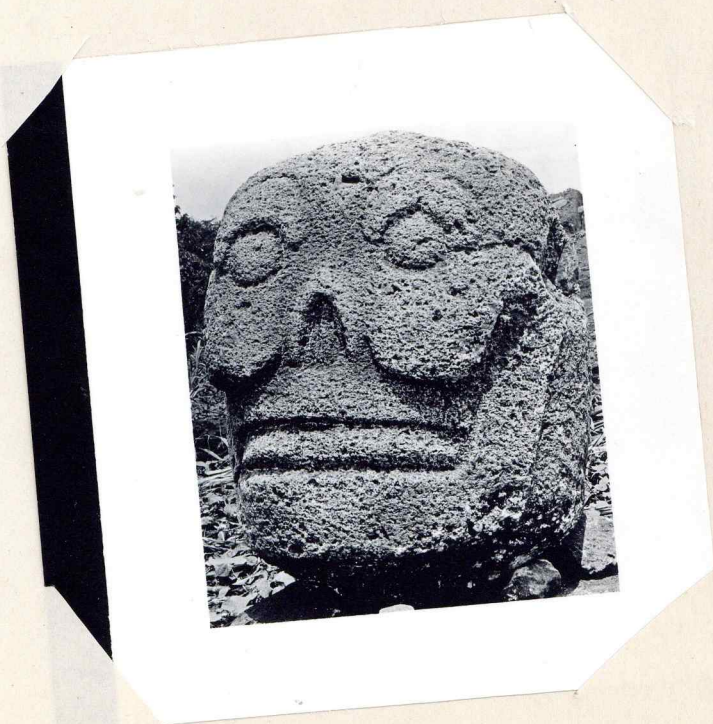
Same.

294



295

San Vincente (hc)



296.

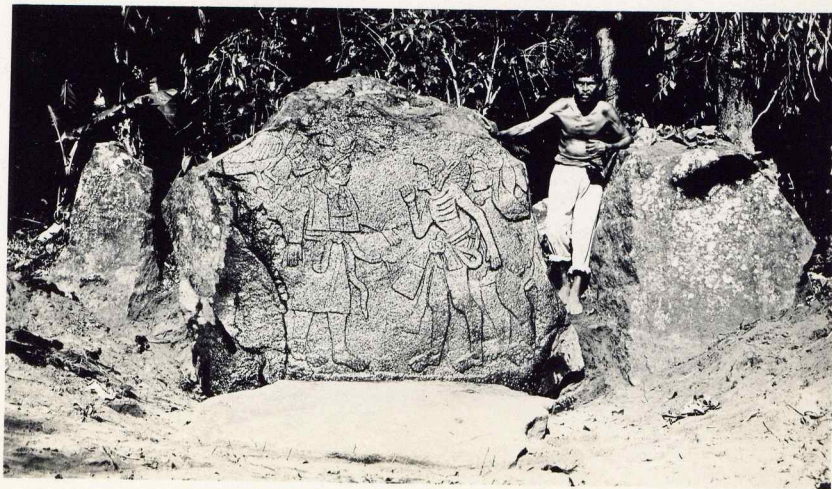
San Vicente.

"No Demos" cp with
264-5 from San Antonio.



297

San Vicente.



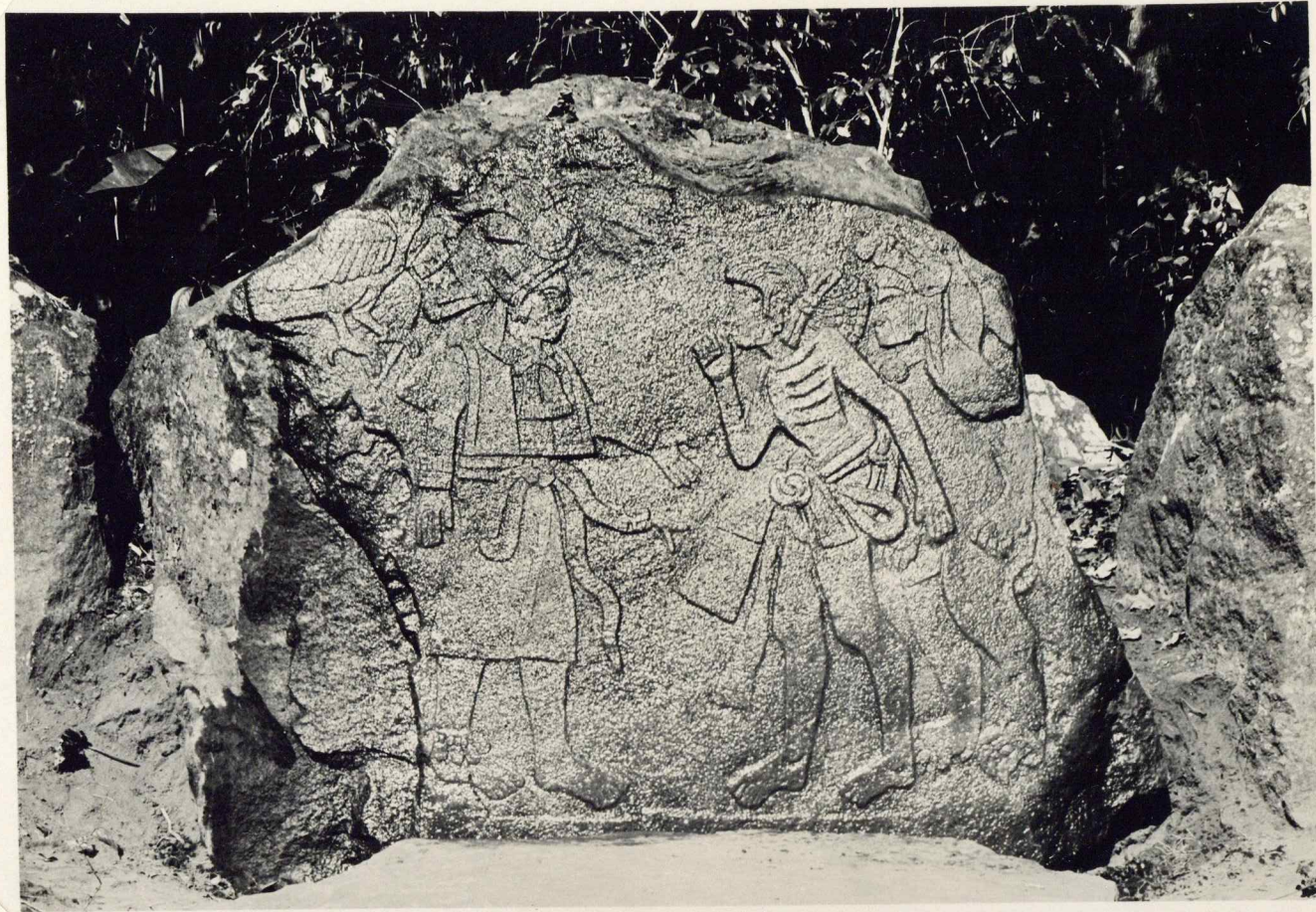
298

See B. Co. 1125.

Drawn by Strebel,

Photo by Mrs. Selser (see memo to JAM).

El Castillo Neighborhood.
(Thompson's St. Lucia Monument 22.)



samo (near El Castillo).

(stone met).

299

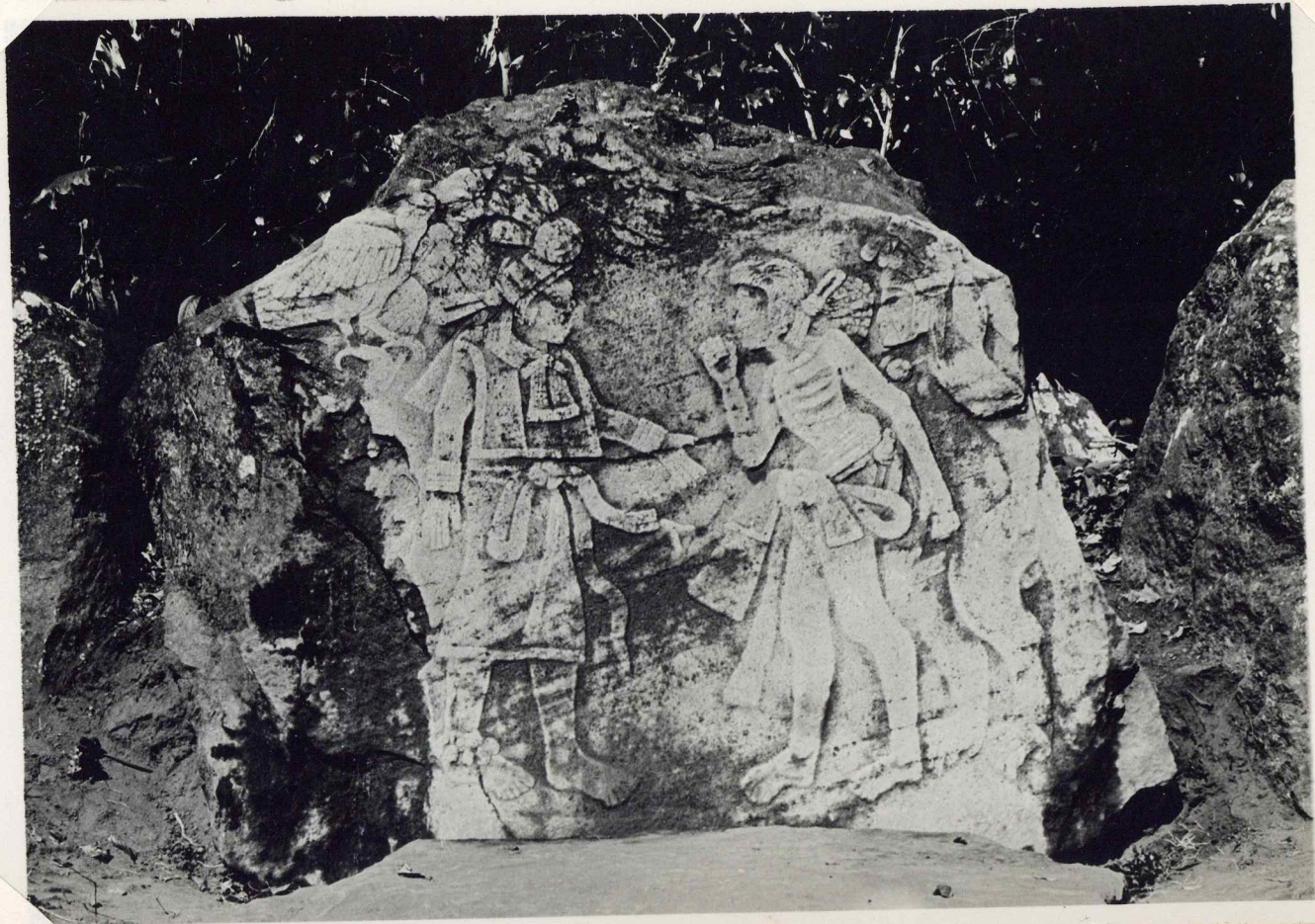
"near Castillo". So Cad 1125 b11.
I am sure this is not the one near S. Francisco
(no. de Villacorta h 376) (Banc)

Same stone as 298 in
other booklet

(coll. by ...)

(found ...)

299



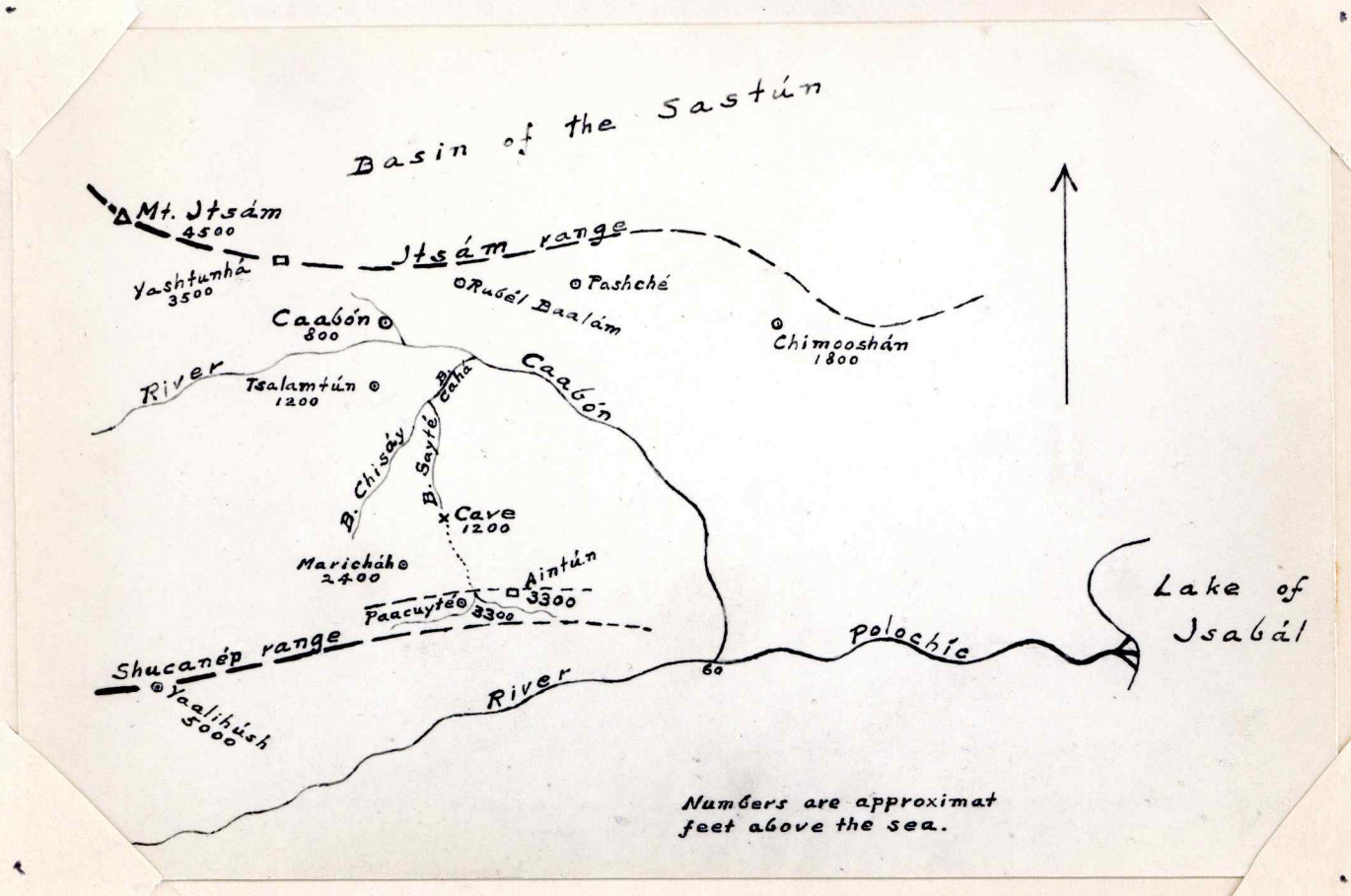
Same (near El Castillo).
stone drying out.

300

To G.S. Thompson
preparation

301

Baul. (B. 1125 p 20).
Pub. by Termer (Baessler
Archiv. Z. u. Arch. von Guat. 1931.



Numbers are approximate
feet above the sea.

○ = inhabited places
□ = sites

176750

302

301

Order. 2nd Edition. July 1931.
For. by Turner (London)
Paul. (A.M. 1931)

302

303

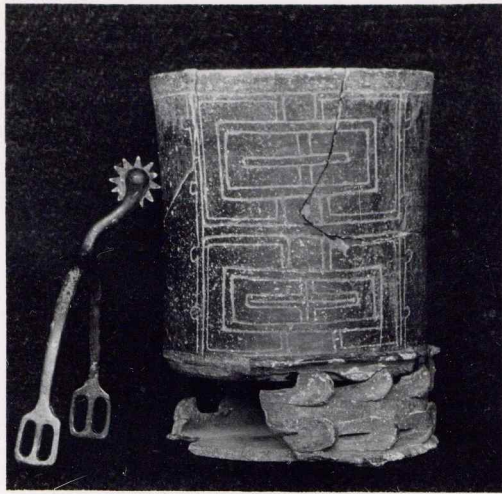
1138 1136 1137 1135 1139



303



304



305



1127

1128

1129

1130

1131

306



307



308



309



310

310

Aintún, Taacytó valley, Coahuila district,
alt. V. Mex.
Sec 1135/9, p 31



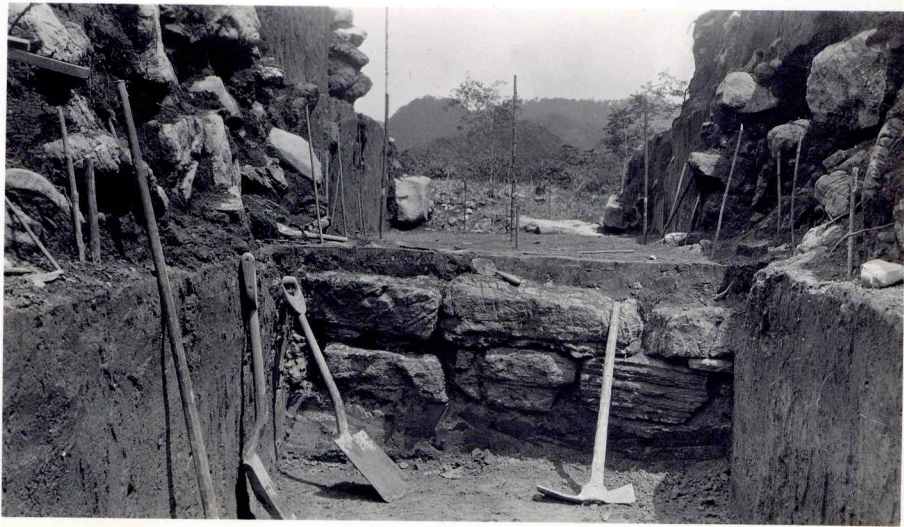
309



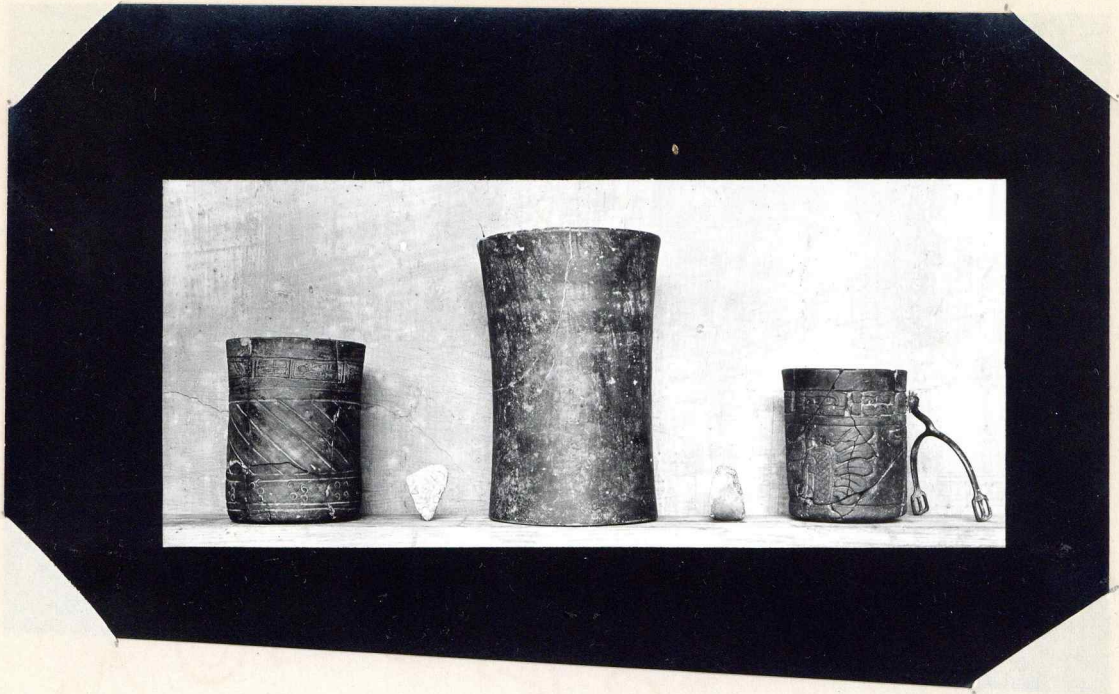
310



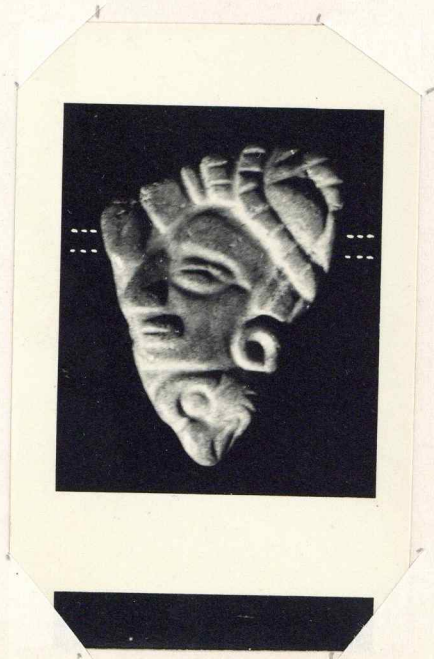
311



312

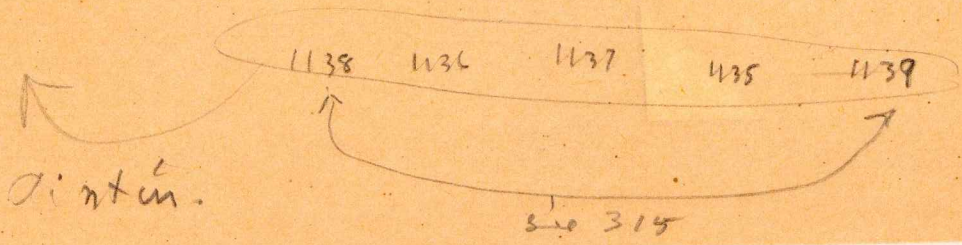


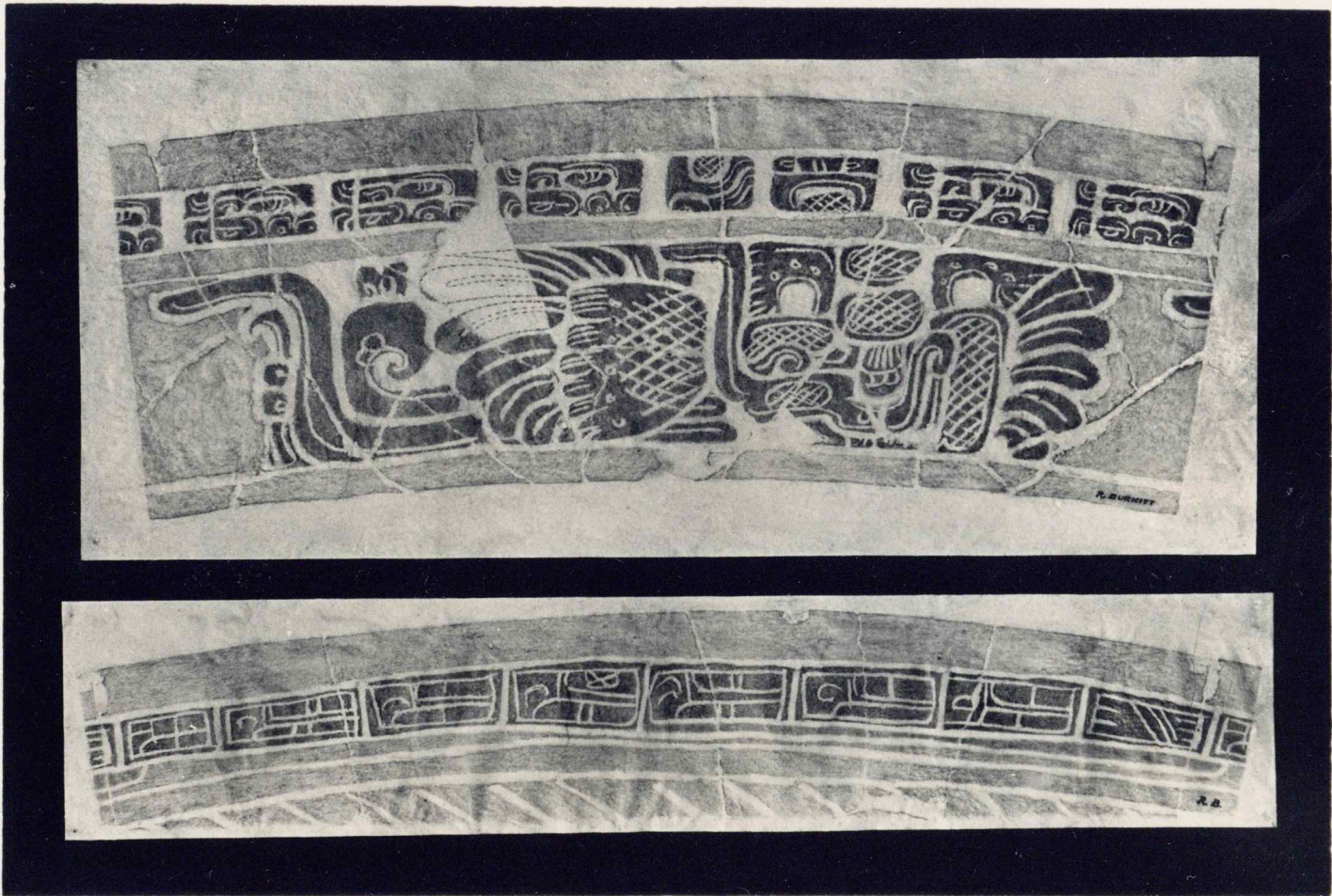
313



314

913





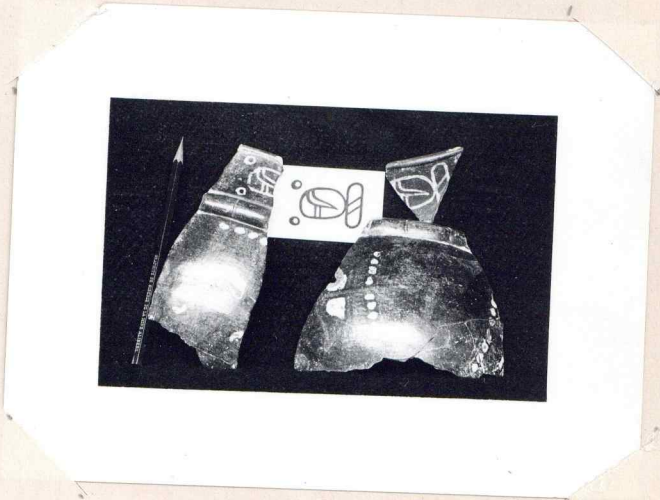
315

See photo 313. Put in the ~~Terrace~~ ~~Princeton~~ ~~Academy~~ ~~on~~ ~~and~~ ~~was~~ ~~at~~ ~~1931~~

312



316



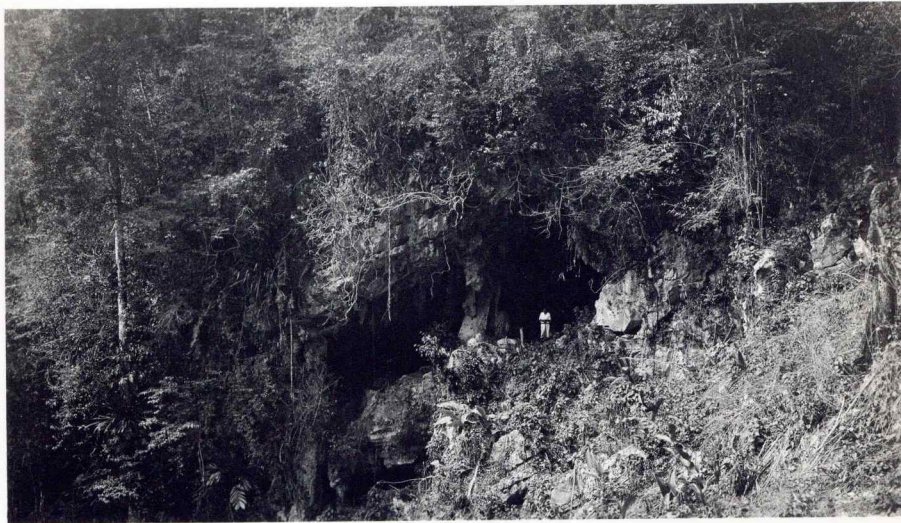
317

316

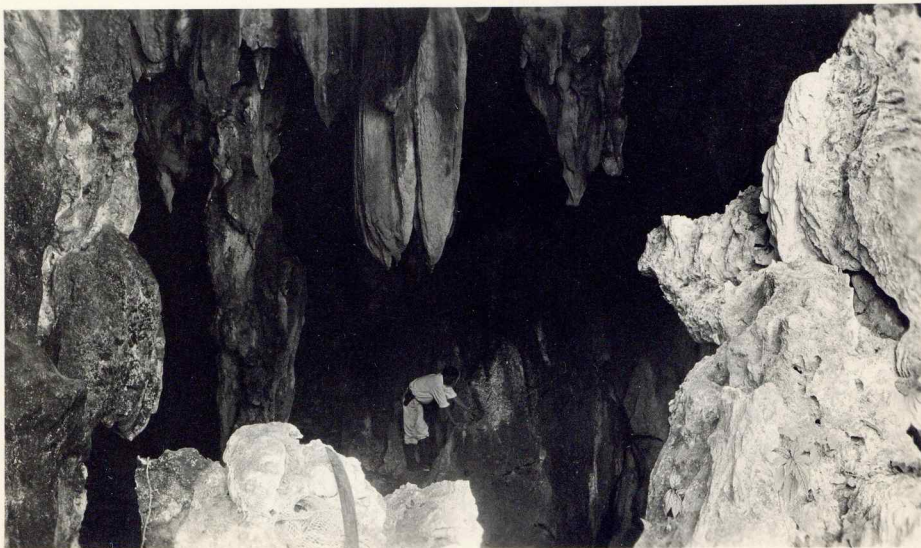
van den Mandich

317

Mandich. (Carbon Print). Case
No 1140 (1938)



318



319



320



1145

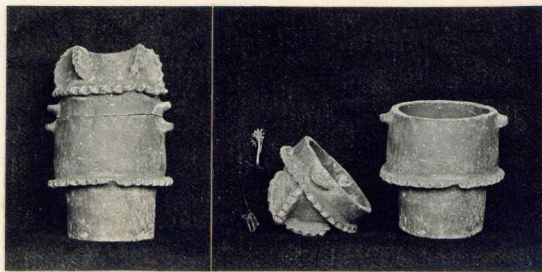
1148

1146

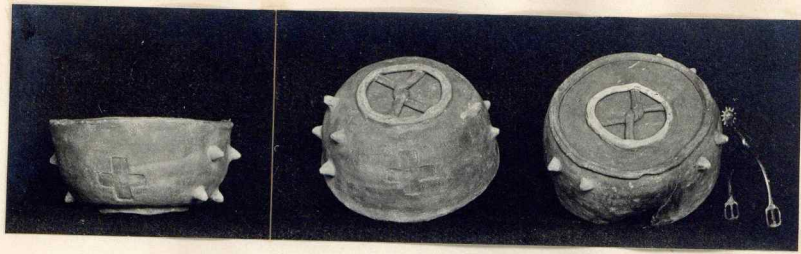
1149

1147

321



322



1151

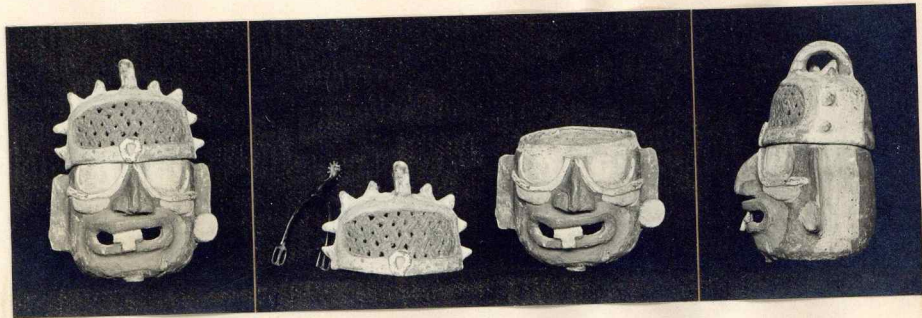
1151

1152

323



324



325

324

Manchik (lower of 2 caves)

325

From Cave "Lutherdau" (p 39)

So 1146 on Manchik.

1140/54 636

Manich (p 57, Cob 1141/54)



326

See Obj. Cat 1916/54

P. Burkitt

B

Photos

~~Perambled~~

LS
1943

288 to 298

301 " 314

316 " 326

~~to Remove~~
~~and mount~~
~~with others.~~

Plan, next after photo 291

Rubbing, " Photos " 326

No Photos
1989

P Ruskitt

~~Photos 299, 300, 315~~

No Photos
1984

Burkitt Photographs

302-326 Atlantic drainage in Alta Verapaz

309 - ~~308~~³¹⁷ excavations at Aintún

318 - 326 cave on the Dajté river