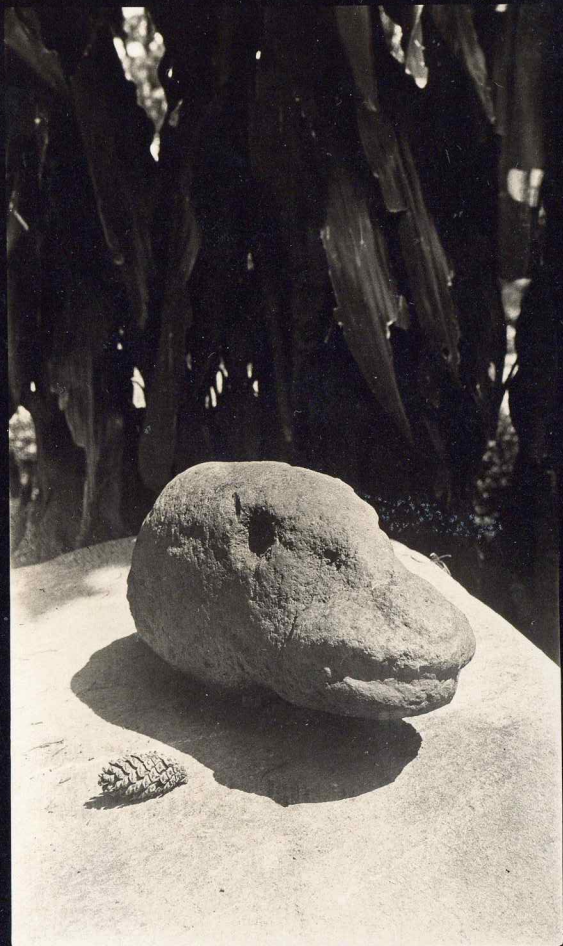


Burkitt Nos 262-287

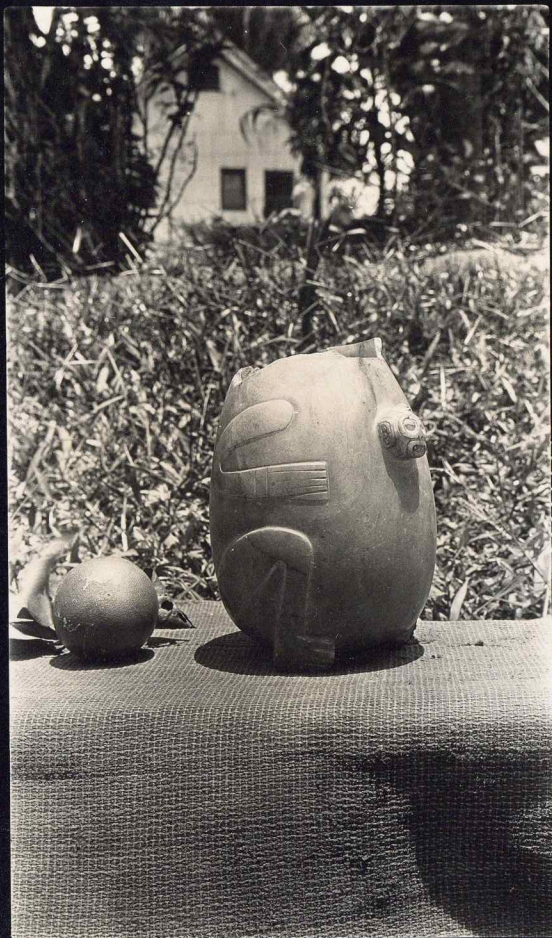
(Nothing on birds except  
the number).

See Burrows Cat.  
1113-1115

"Sand Vincent" - land near  
"Sand Anthony" (San Antonio Socatopaignez?).  
# 266-69 is old Polo Gudo, he J.O.M. and  
Tanner, who got to it independently, but is  
an "Sand Vincent" land per Burkitt.  
Surely the same site, in San Marcos.



803+



8029

263

sa 020 1114. "nan in chocolé,  
found in chocolé neighborhood"

Boonpa in  
Q. w. gold hoary.  
Cao 1113.

262



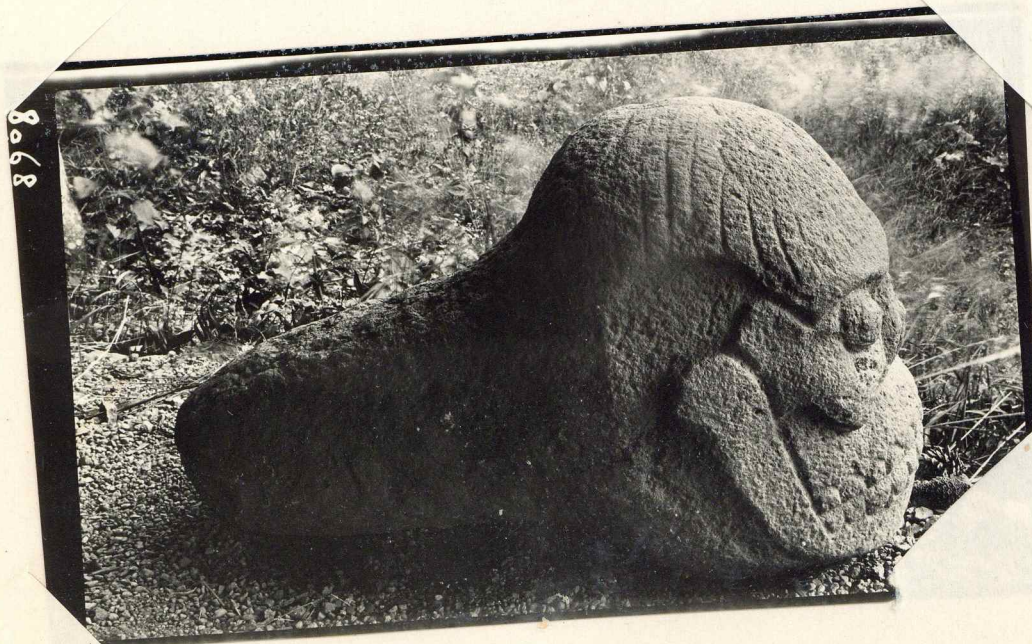
264

neg.

1) St. Anthony = San Antonio Sacatebéguez.  
 2) near St. Anthony. near in Chocalá.  
 St. Vincent (hot county below Chocalá)

See 1114.

(St. Vincent is  
 per Burkitts:  
 apparently same  
 site as  
 Palo Verde.



868

265

neg.

compares with another, 296 same stone.



135-88

708  
266

St. Vincent. (Palafredo to San Mateo) So B. Cat 1114.  
Seen by Masam. See Masam notes: letter to Tenner, June 27, 1939.

(Suchitepequez Dept).

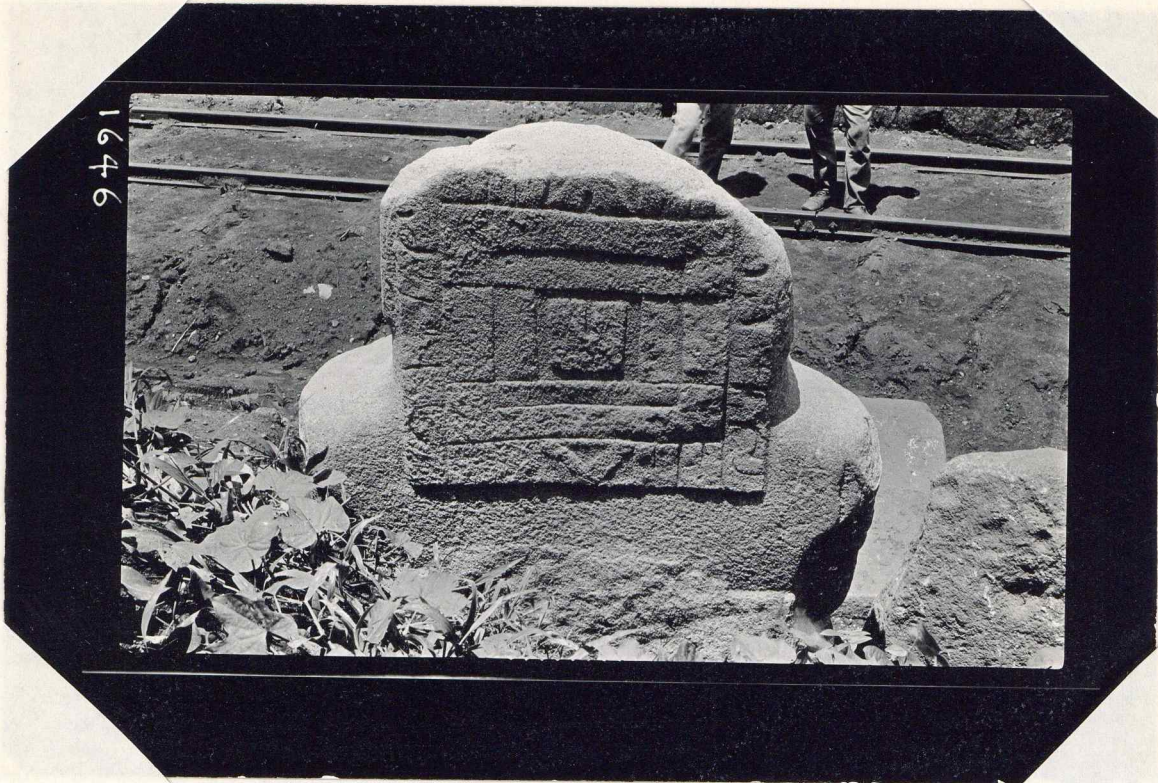


8045

267

Same

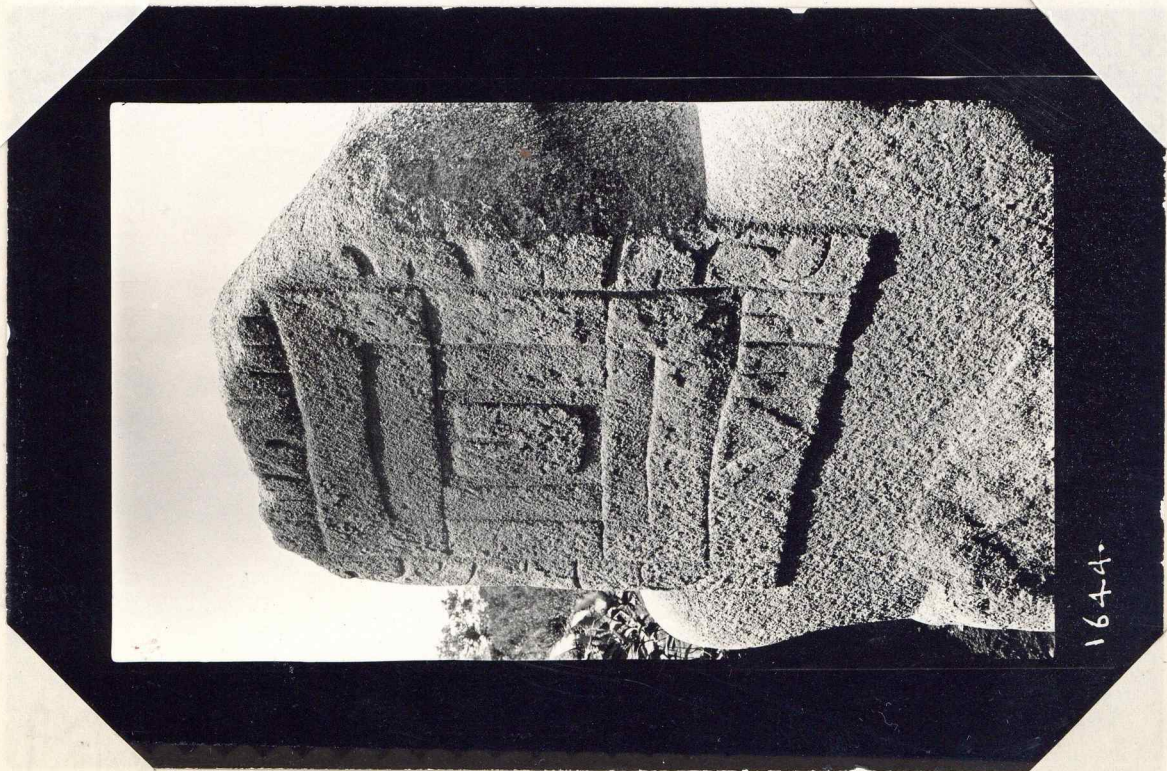
708



268

109

Samo stone as 266-7



269

108

Samo

Mt Alto,  
Esquintla.

See Burckell letter Dec 1, 1930  
Olys. Catalogue No 1115.

M. alto appears on (Feyzes Map).

= tall brush or woods.

not on "lotess Map".

Had a village - woods & houses.

About 400 feet above sea level. ; low hot country, also flat:  
"not high to be called 'hito', and the general slope is over 72°.  
Hills are in sight, though not in all directions. The horizon  
(opp. the sea) is the line of the volcanoes.

the two nearest are Fuego and Water (270).

Has send a plan. When is it? Amos find in Kereb (Mar 1943) 25.

few mound; 3 or 4 high ones but no masonry, other boundary line  
of Mt Alto. (only one in case of the plan).

Mounds (high & low) outwardly of earth

few mound about 16' high.

High one, "may be about 40' high. apparently on  
same order as ad Chocola. (drawing is roughly accurate,  
merely diagramatic.

Stems of all mounds (A to F) same as those of the Chocola stems  
at the museum. - grey volcanic, hard (common).

all are big - i.e. too big for one man to handle.

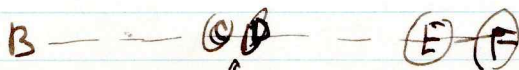
Mt. is underground - probably from some work.

all men or less sunk in ground: rubble, the ground rose.

Probably never disturbed.

all face diff directions: but all more or less westerly or easterly

A - "solitary" B-F together 7 labels in a row. (



line only  
applies then.

line runs to Fuego.

A & low mounds  
are neighbors.



270

Aug. 92384  
 Volcanoes Fire (left) and Water (right).  
 (Photographed from Monte alto sight line, from top of low arch. mound.  
 Fire is nearest volcano to Monte alto)



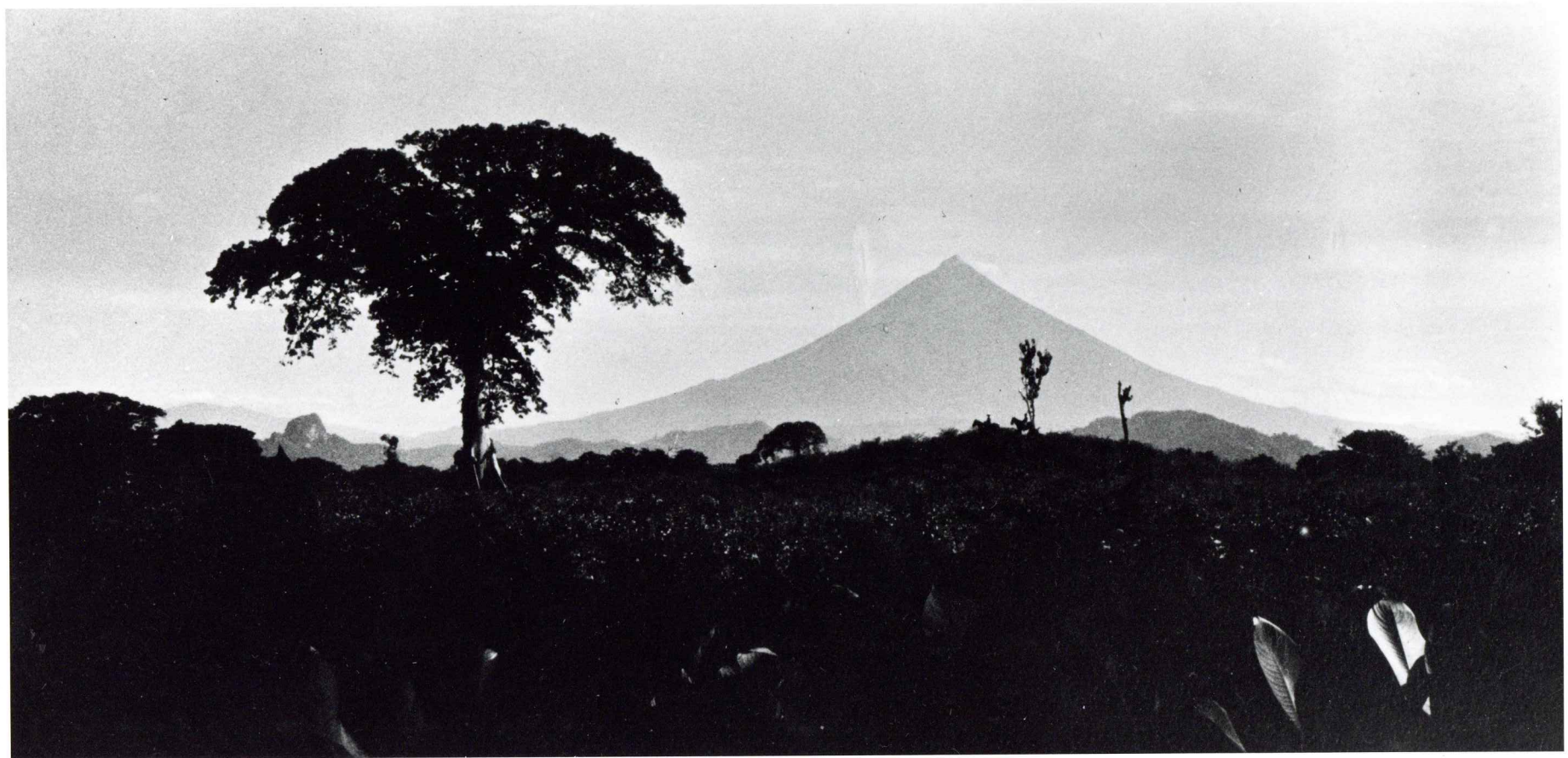
271

Aug. 92385 Probably low mound is in the foreground



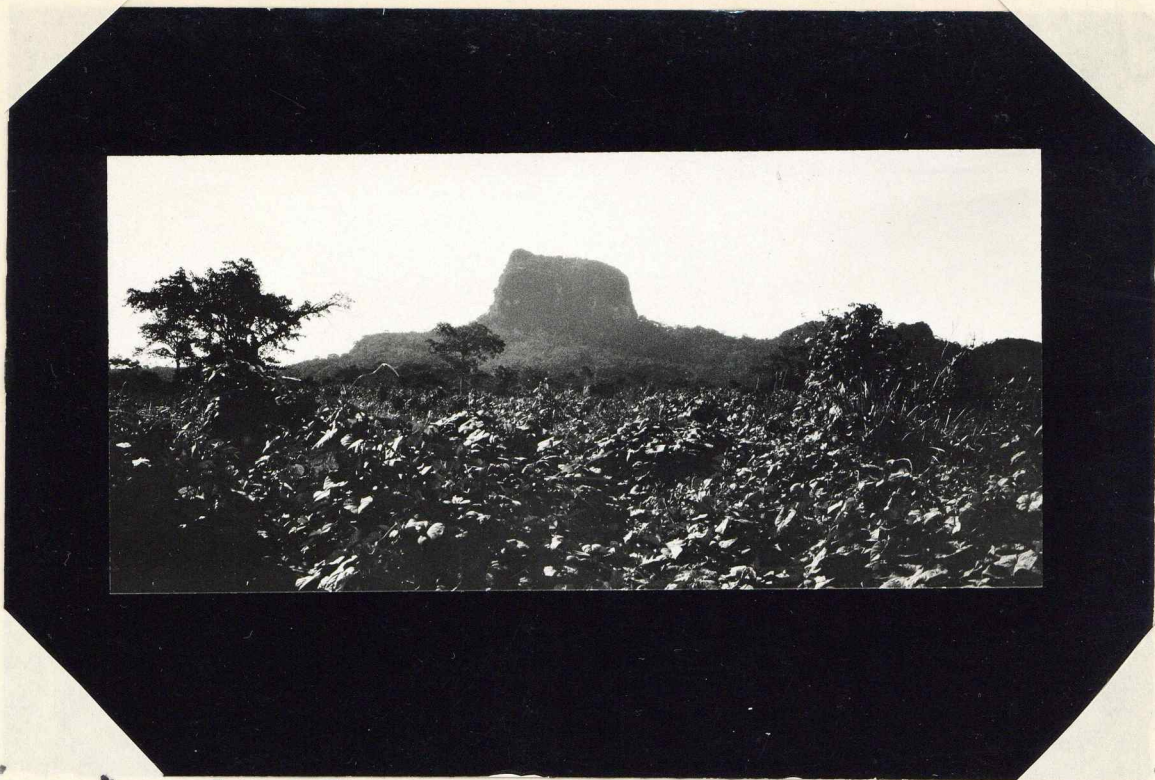
Neq. 92384

Burkett 270



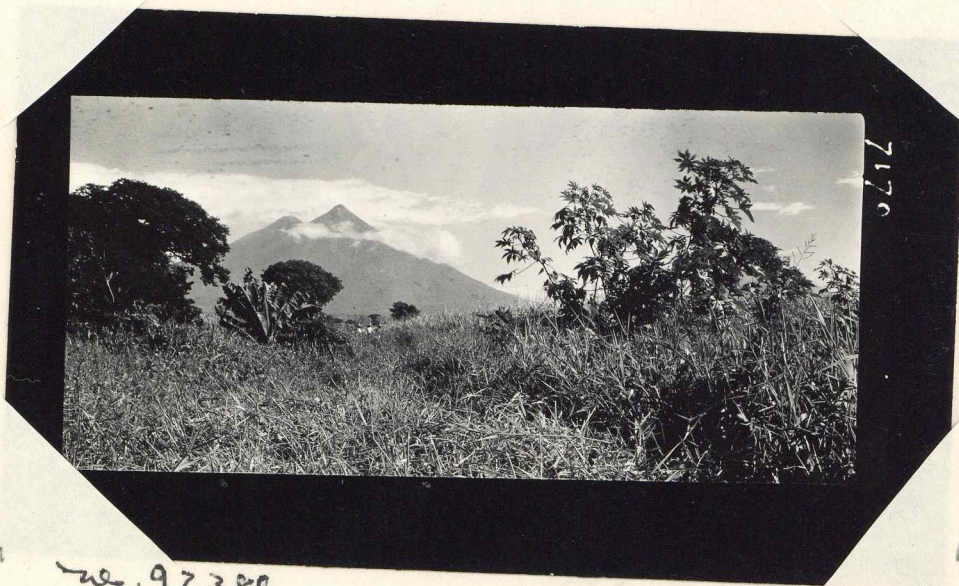
Neq. 92385

Buskitt 271



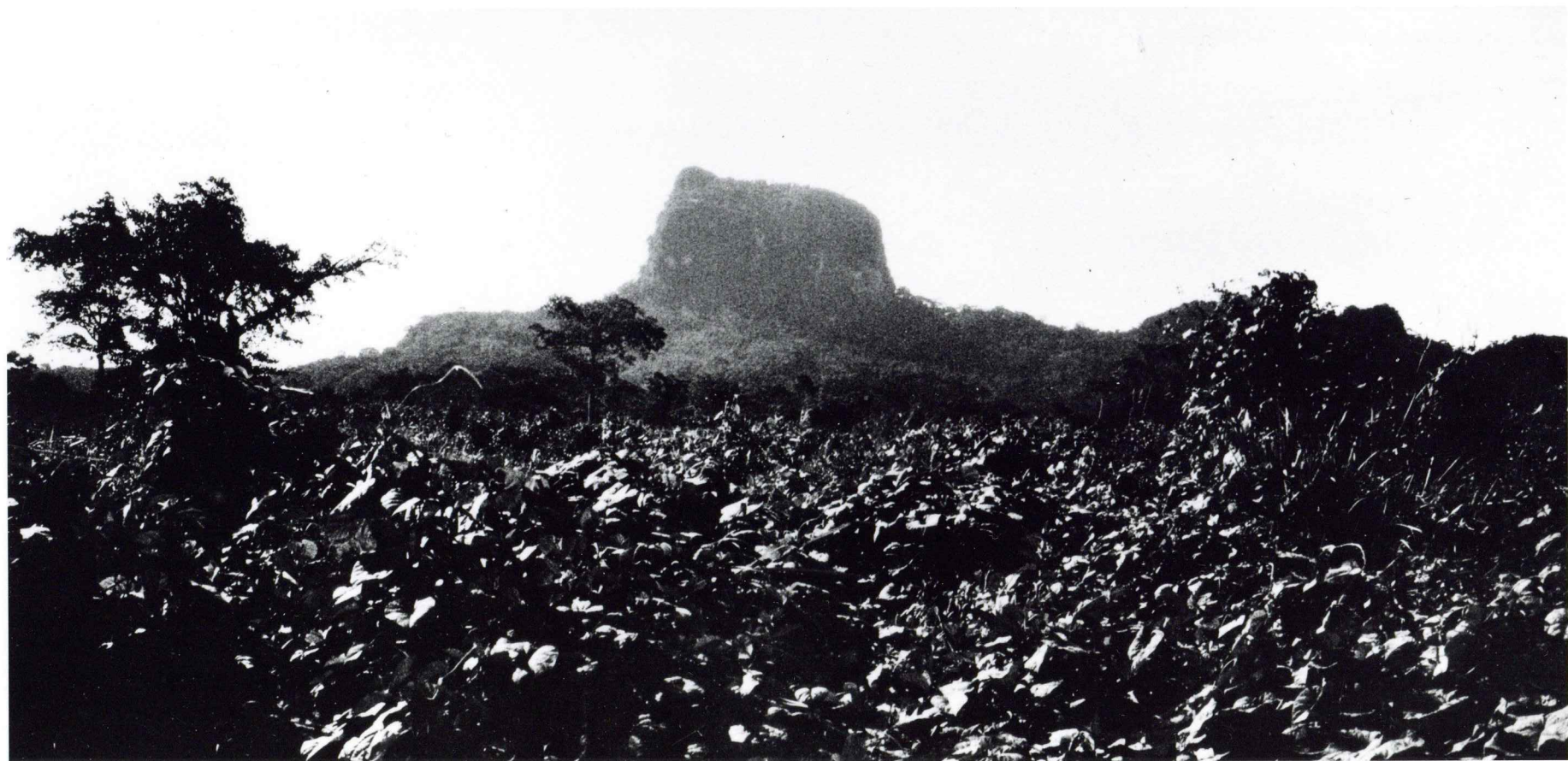
272

neg. 92388 Back of Sirkinalá. (new view).



273

neg. 92389  
Both peaks of: right Fin  
left Acatenánago. (hidden  
from Mateo alto).



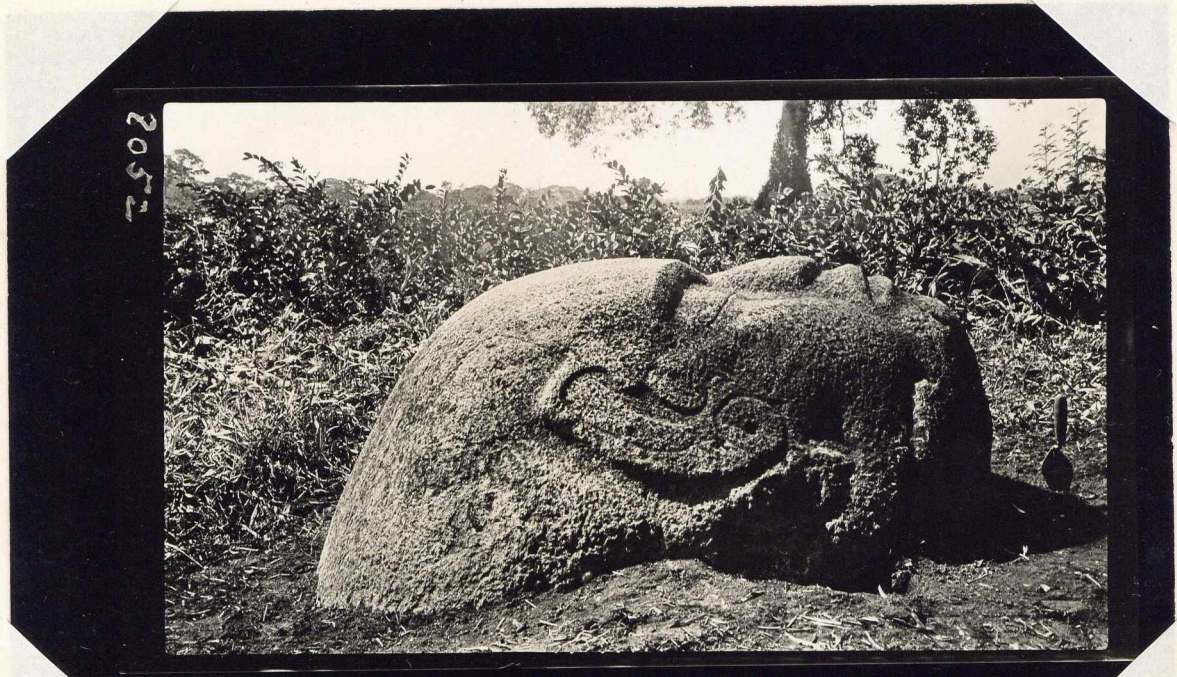
neg. 92388

Burkett 272



Neq. 92389

Burkett 273



2052

neg. 92394

Vis. height 1' 10"  
length 5"  
width 4' 6"

Stone A. (did not drag up). (p 12 of Cat.)

Begin to retreat at bush-knife hole, arm down to elbow. Probably not much buried. Eyes shut.

274



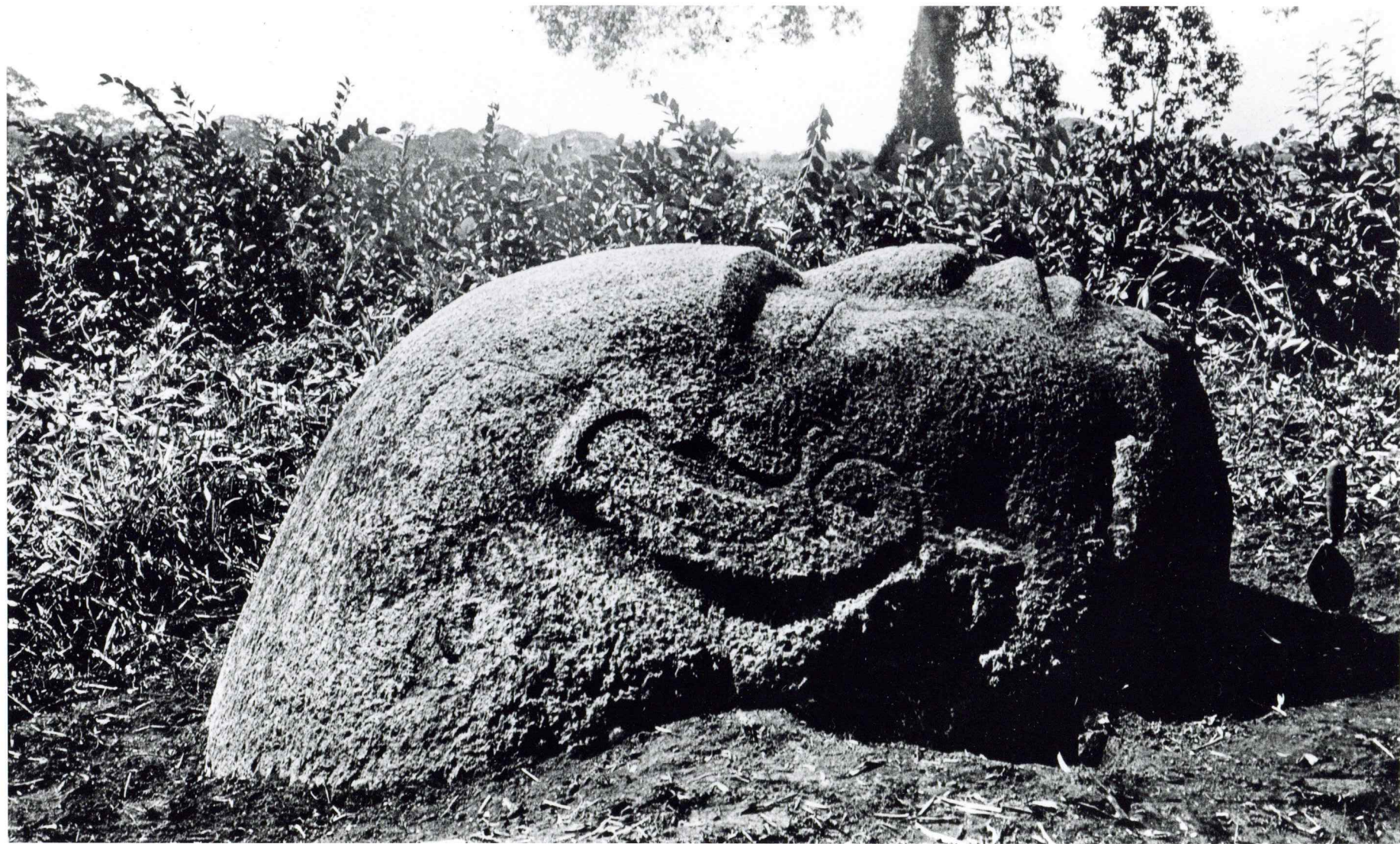
2059

Pay-sign  
"Death"?

neg. 92395

Probably same stone as found in Richardson's 1440 note 15, Stone A.

275



Neq. 92394

Burkitt 274



Neg. 92395

Burkitt 275



neg. 92390

H. above ground 2'  
L. length, b. to f. r. 5'  
width 6'

Stone (chunzo) B.  
no digging

note channel to  
inside corner of each eye.

276  
(Cat. 613).



pay sign  
"death"

neg. 92391

Same stone  
as Richardson,  
1940, photo 18 v.  
(??)

Stone chunzo B

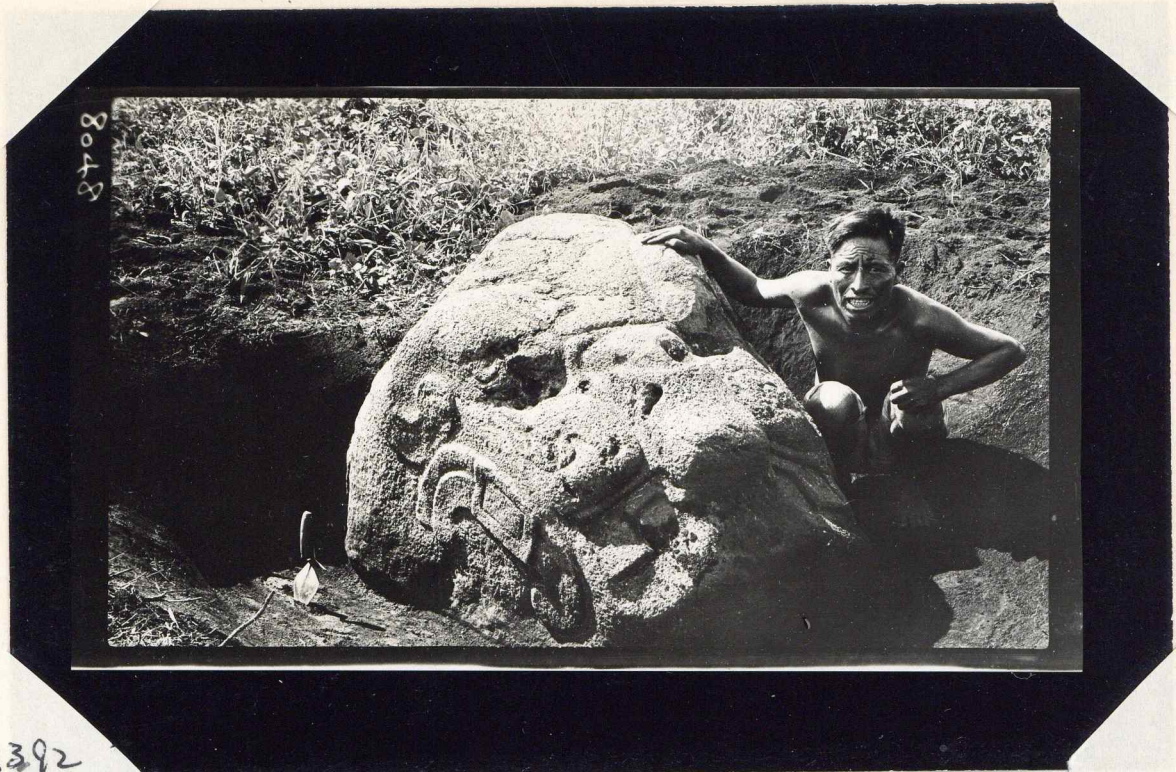
277











278

Neg. 92392

I mean -  
see 280.

Stone (Image) C.

Before digging, in ground up to the eyes.  
had "horns" - As unc. thinks therefore a deer.

'Jay-sim  
Pen?



279

Neg. 92393

Pub. by L. G. 1930  
Richardson, on  
page 5 miles.

Image C.







1653

280

neg. 92398

vis. height 2' 8"  
width 4' 8"  
vis length 5'

Image C.

Acc to B.: no lower jaw; "sophisticated" teeth on sides,  
none in center, as with deer.



3049

281

neg. 92399

Image D.

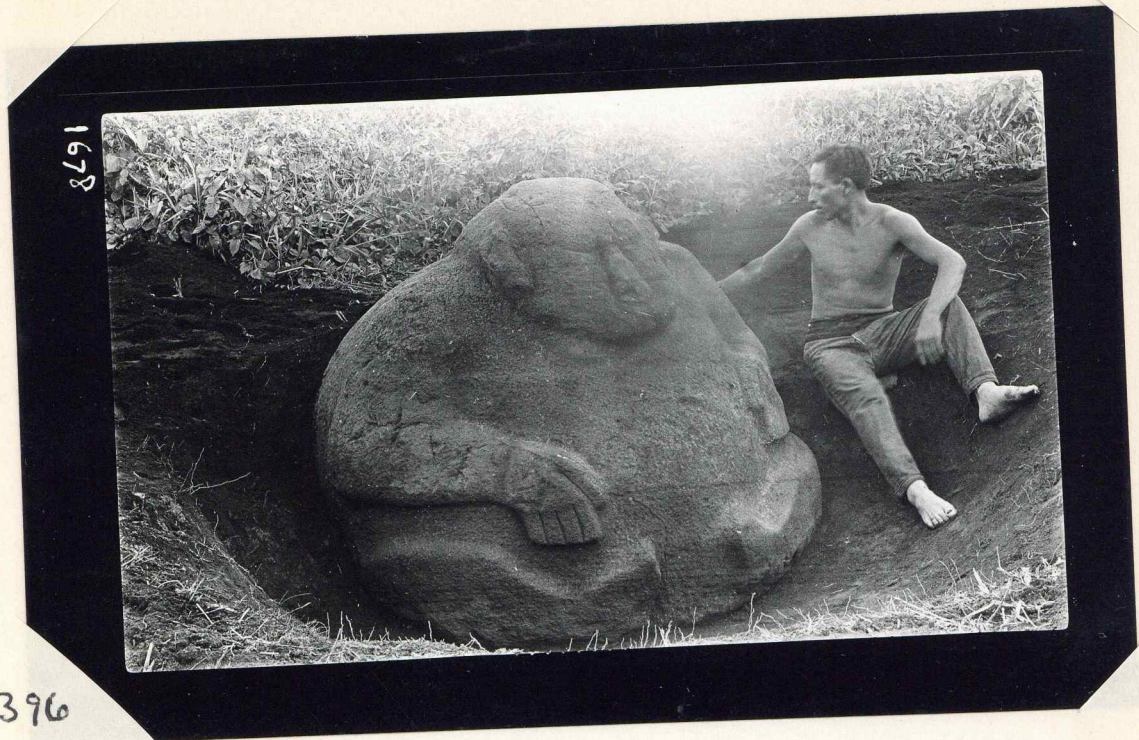
See 282 + 3.











neg. 92396

282

vis. height 4'7"  
width 6'

Image D, after digging.  
with E, "he looks" the biggest of the six.  
if eyes are shed, treatment differs from E, or A + B. 8 and  
see the shed hole  
as in the  
others.



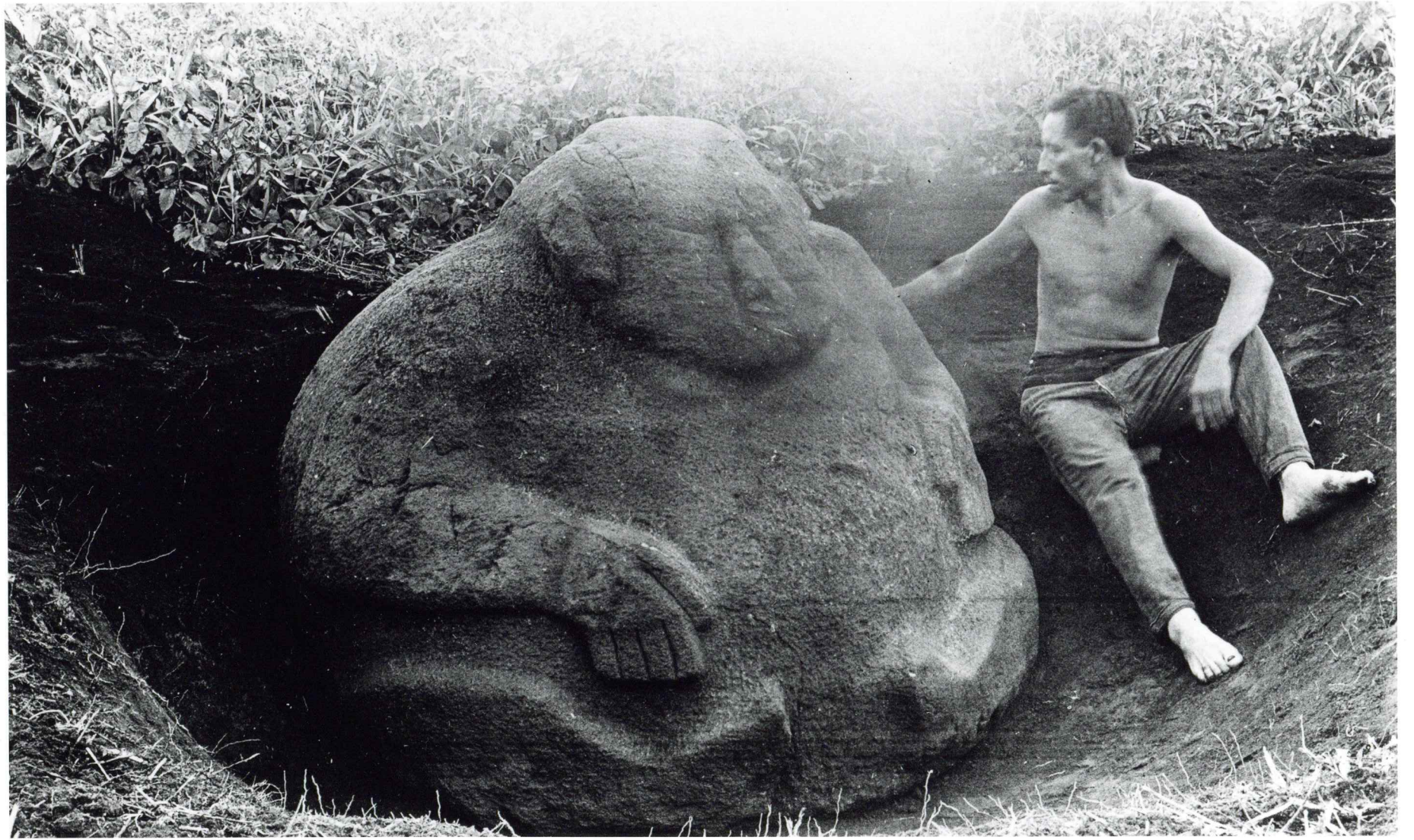
Suggests  
eyes on  
other and  
gash  
held  
insert  
eye.

neg. 92397

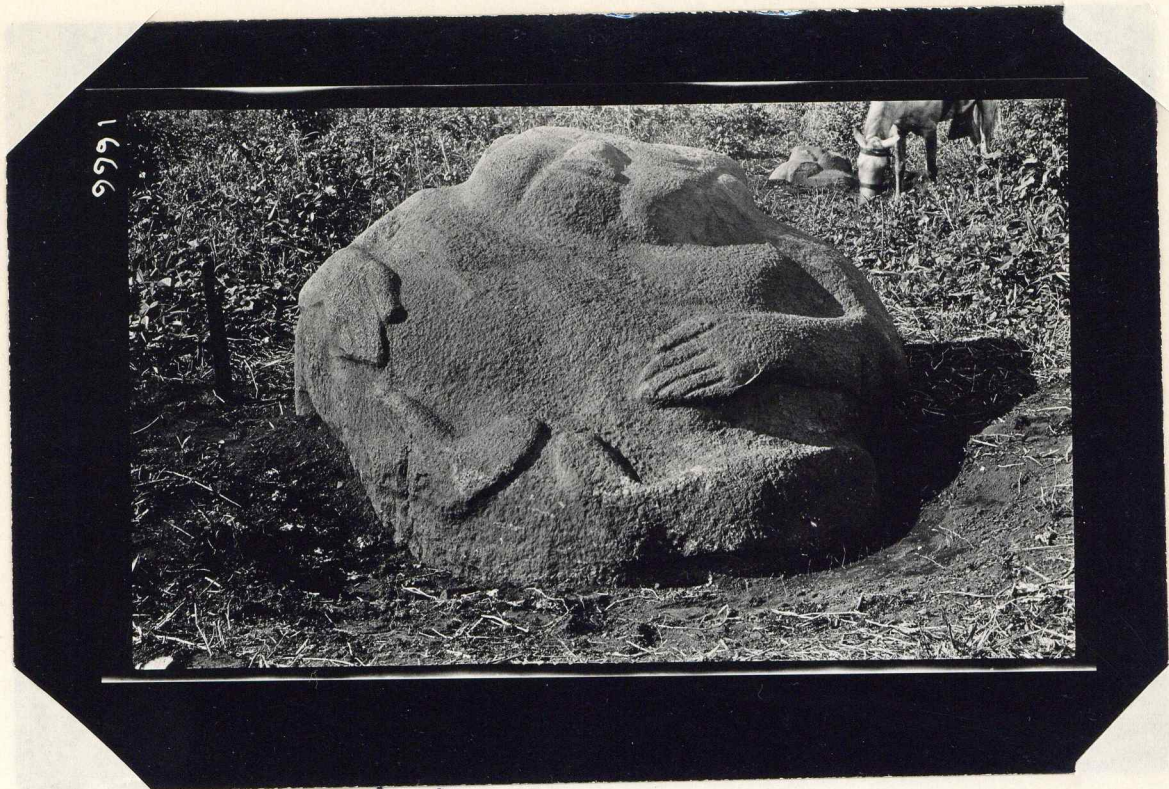
283

Similar  
view pub.  
by Richardson,  
1940.

Image D.  
"Remnant of nose unites with the remnant of  
the upper lip" (his)







284

Visible head 3' 10"  
 waist 6' 8"  
 "thick" 7' 4"

neg. 92386

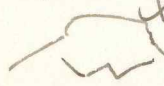


Image E Eyes shut.

Possible nr. of collar, or hoists (b17)

Note image F beyond. (see opp. direction)

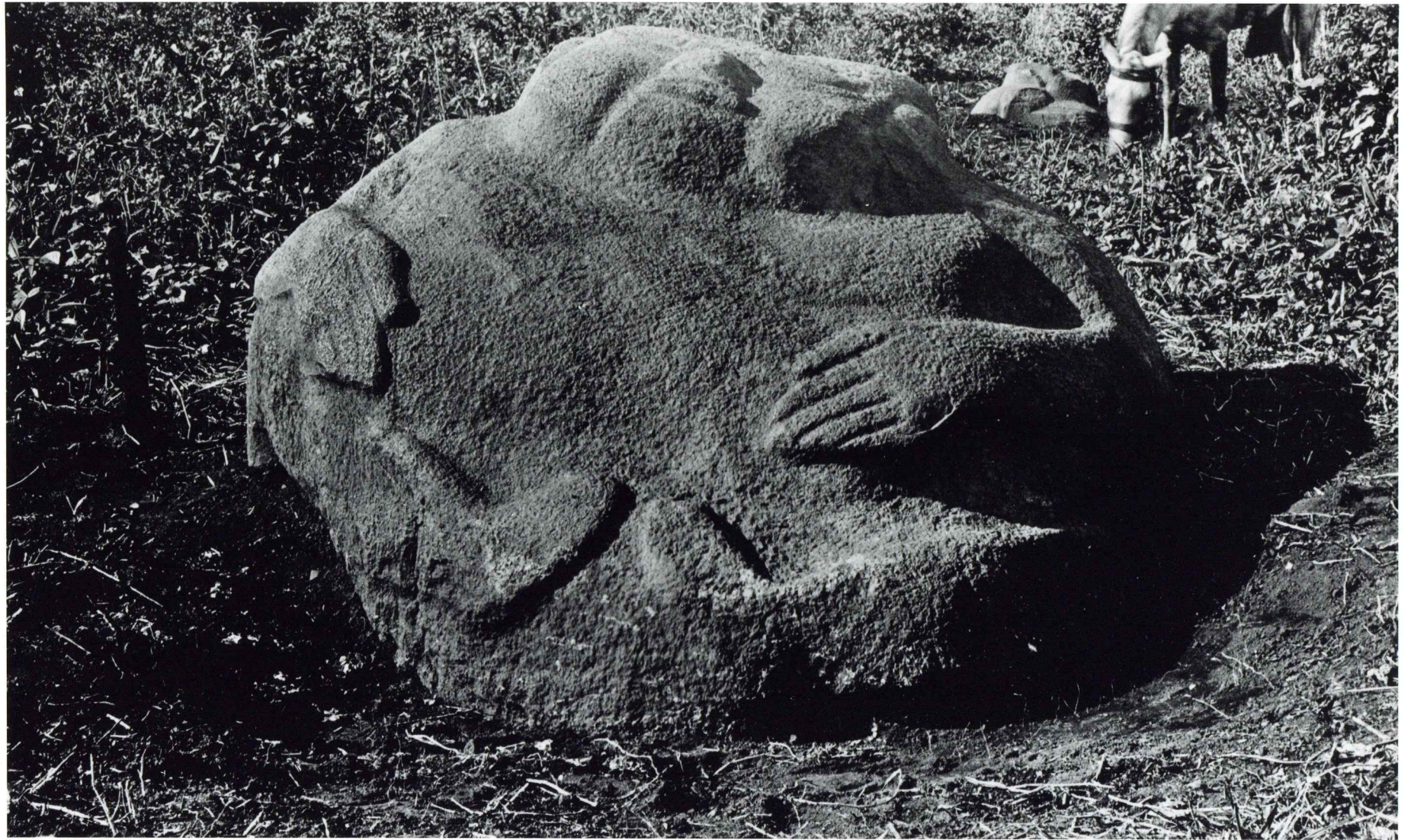


285

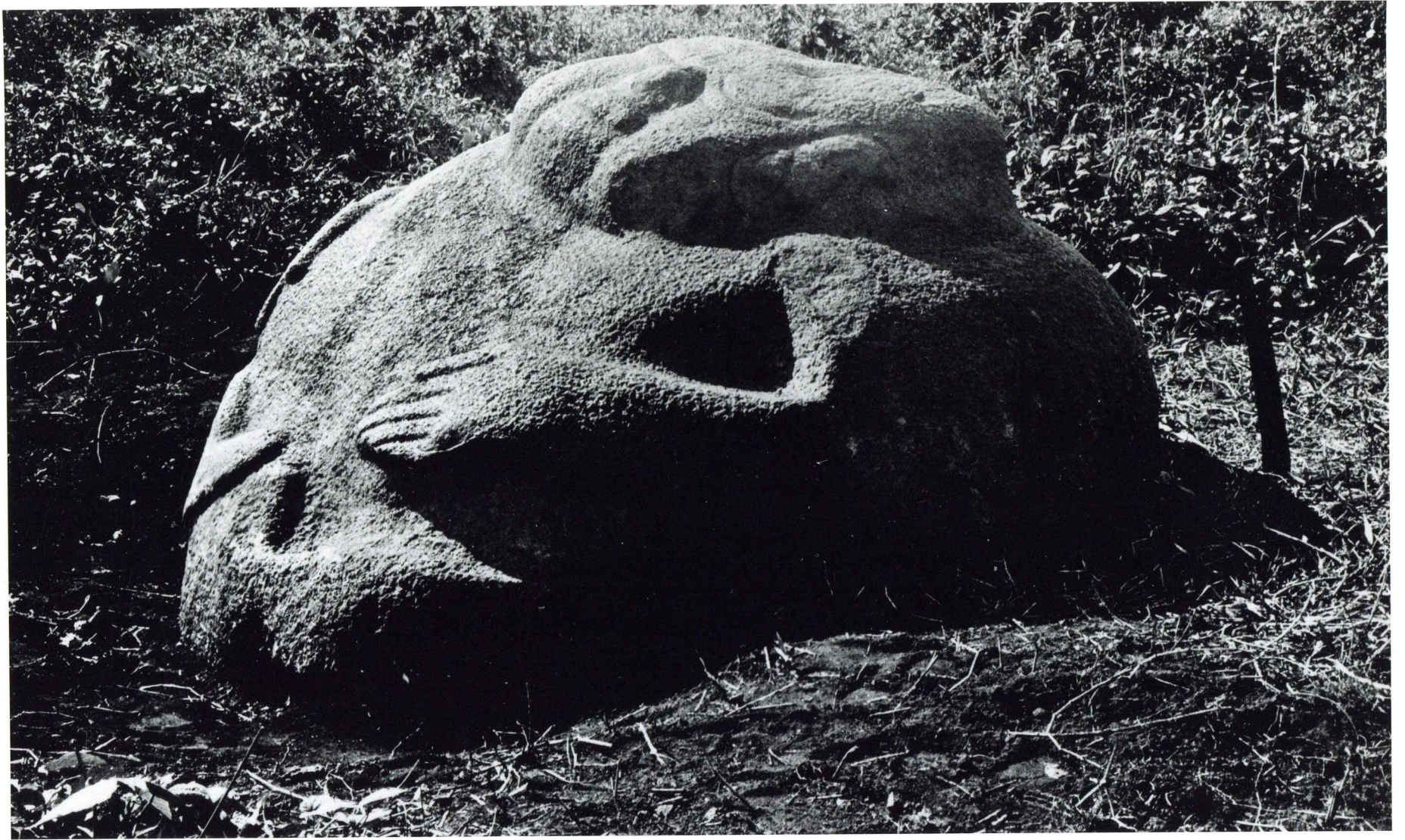
Wood Purchased by Richardson

neg. 92387

Image E.











Pos sign  
Rabbit?

neg. 92400

286

total height seen,  
4'; width 4'

Image F smaller than P or E. (see notes).  
Buried up to the chest. Note color + headband.

Legs  
arranged  
differently  
from P + E;  
and  
don't look  
human.



8-591

not as  
open  
from  
hands.  
thinks  
Face +  
hands  
human,  
rest  
animal.

neg. 92401

287

Not published  
by Richardson.

Image F Eyes are open.  
Balls are rough, concave; used  
balls fallen out. B. thinks certain.



