

Bunkitt, Nos. 244 - 252

See his typed "Contents of
Fotos 244 to 252".

and CoD, 1110 (b1).

Part of a private collection in
~~Rolo Jorda~~ Chocoma.

----- Contents ov Fotos 244 to 252 -----

1/25: fotos 244/52: part ov the colection ov Mr Henry Kummerfeldt, ov Chocolá. The same orange iz in each picture.

From Chocolá.

1 (see 1/25): fotos 244, 251. ^ A smooth black stone image. Height, 10 centimetres. Entire.

2/3 (see 1/25): foto 244. Already fotograaft by Dr Mason.

4 (see 1/25): foto 244. From Chichicastenango, in the province ov Kiché. A stone dish, dark grey, with a frog ornament. The dish iz double, that iz, ther ar two receptacles: a round one in the frogs back, and an oblong one, very shallow, occupying the part behind the frog. Length, 14 centimetres: width, 8: height, 3. The ~~part~~ end away from the frog iz much damaged.

5/19 (see 1/25): pottery.

5/9 (see 5/19): foto 245: and numbers 5, 7, and 8 ar also in foto 252. Already fotograaft by Dr Mason.

10 (see 5/19): fotos 246, 251. Brought from Totonicapán. Red, coarse, il made. A hollow image ov a woman with a huge goitre on her throat. Height, 13 centimetres. Entire. By the owner thought possibly modern.

11/2 (see 5/19): fotos 246, 249. Already fotograaft by Dr Mason.

13/7 (see 5/19): from Indians ov the Niwalá country, above Chocolá.

13 (see 13/7): fotos 246, 251. A smooth, dark colourd, whistling image. Height, 13 centimetres. Mouth and noze damaged.

14 (see 13/7): fotos 247, 250. Colour, dark chocolat. A hollow

14, continued

-handle, like that of 19 (in the same fotos), but longer, and ending in a human face. Length, 33 centimetres.

15 (see 13/7): fotos 247, 250. A fragment of a black whistle, representing a woman with a pot in her hands. Height, 9 centimetres.

16 (see 13/7): fotos 247, 251. A coarse hollow fragment with a monkey ornament. Height, 10 centimetres. Hands, legs, and chin gone.

17 (see 13/7): fotos 247, 250. A coarse, solid, squatting figure, with a conical hat, and with a hump on the back: but the hump is broken. Height, 7 centimetres. Not made from a mould.

18 (see 5/19): fotos 247, 250. From the hot lands below Chocolá. A red whistling image with traces of white. Height, 12 centimetres. Has a hole knocked in it below the left hand, and another in the back of the head. And the holes in the eyes (though not those in the shoulders) are also mere damage.

19 (see 5/19): fotos 247, 250. From Chocolá. Found in farm work by the owner himself. A so-called censer lid: outside dark red; inside, smoke-blackened: perforated on top: and with a hollow handle ending in a reptile head. Length with handle, 33 centimetres. Diameter of the lid, 17. The side not in sight has a piece 3 centimetres wide broken from the rim.

20 (see 1/25): foto 248. From Chocolá. A coarse stone image of a head and shoulders. Each shoulder is joined to the

9109/97/VV4/V444

20, continued

side ov the head by what I supoze may reprezent some spreading head-dress. The bottom ov the stone iz flat. The top iz a shallow concave, az if to receiv or suport something. Height, about 27 centimetres: width across the shoulders, about 36. A little damaged, especialy about the top.

21 (see 1/25): foto 251: From the Pacific slope below Kesaltenango. Light grey stone. A thing reminiscent, in shape, ov such things az the handle ov 19: but with monkey ornament. In the foto it happens that the monkey (so to call it) lies on its belly: but the posterior end iz cut off flat, and the thing iz meant to stand on that end. Height (or length, az it iz in the foto), 9 centimetres. Entire, except for slight damage to the monkeys noze.

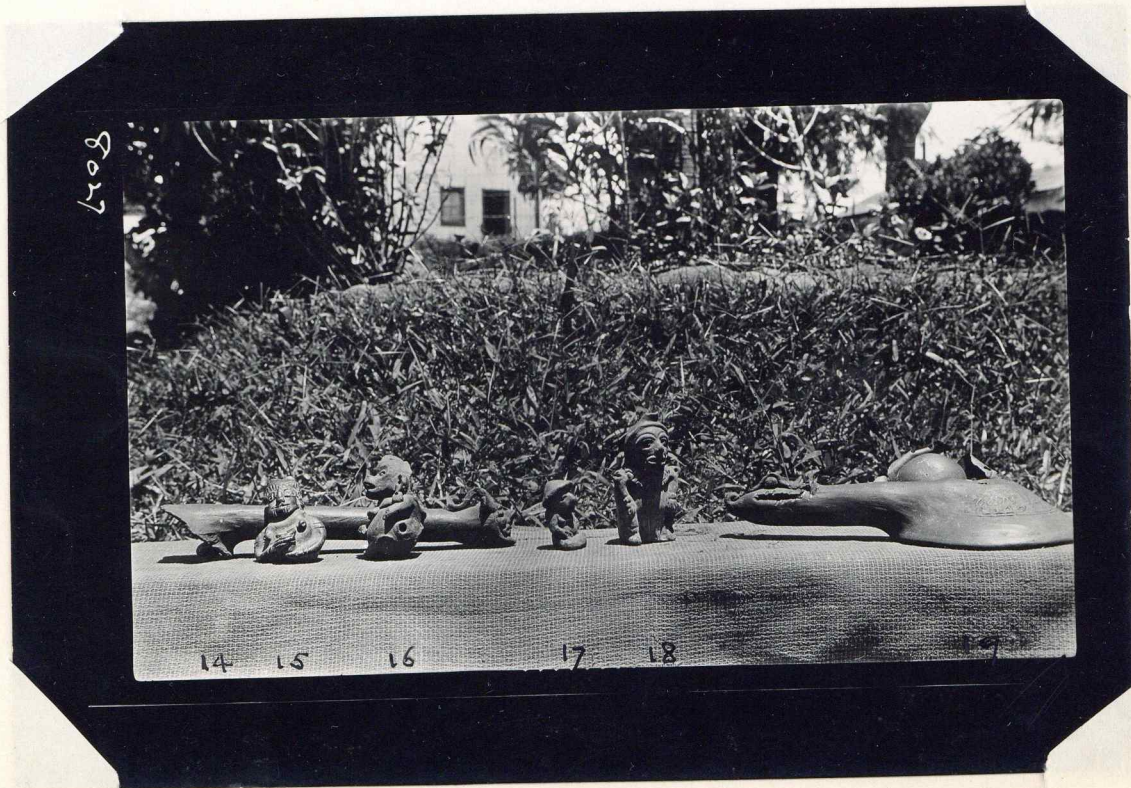
22/5 (see 1/25): pottery.

22 (see 22/5): foto 251, leaning against the orange. From Niwalá Indians (see 13/7). Dark red. A whistle ov a some what globular shape, but with a monkey face stamp on one side. Above the head ar two holes for a string. Length, or height, 6 centimetres. Entire except for a little damage to the mouth piece.

23/4 (see 22/5): foto 252. Already fotograff by Dr Mason.

25 (see 22/5): foto 252. From Sacapulas, in the province ov Kiché. A little yellowish pot, with tortoise ornament. The pottery and style ar like thozе ov number 5. Height, 5 centimetres. Entire.







248

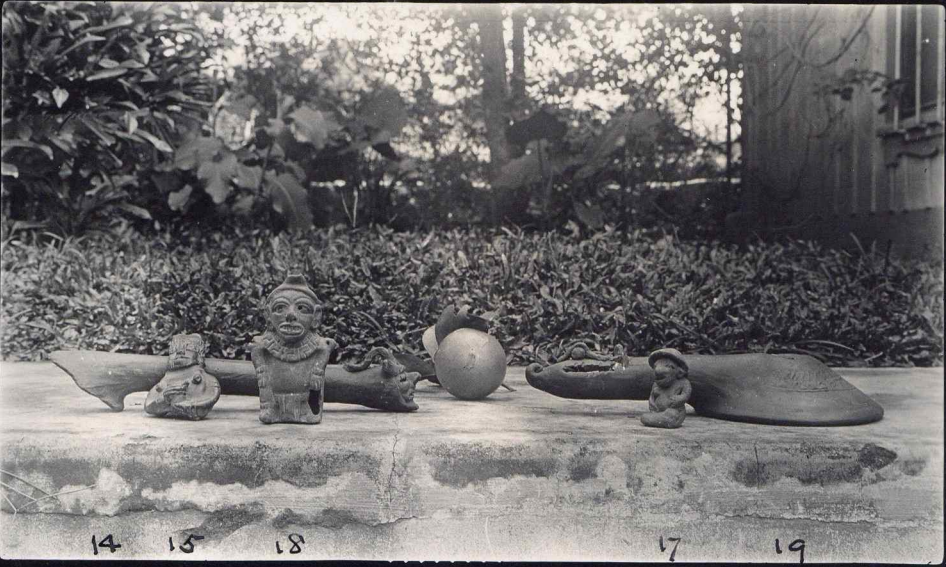
(See Burritt Cat. No. 1110 - "part of a private collection at Chocoma." Also catalogued as "from Chocoma" - Burritt clearly means it was found there, since other items in the collection (Kummerfeldt) are stated to have been brought from elsewhere.



249

Same (Kummerfeldt) Collection. NoD stated where these originated.

8031



14 15 18 17 19

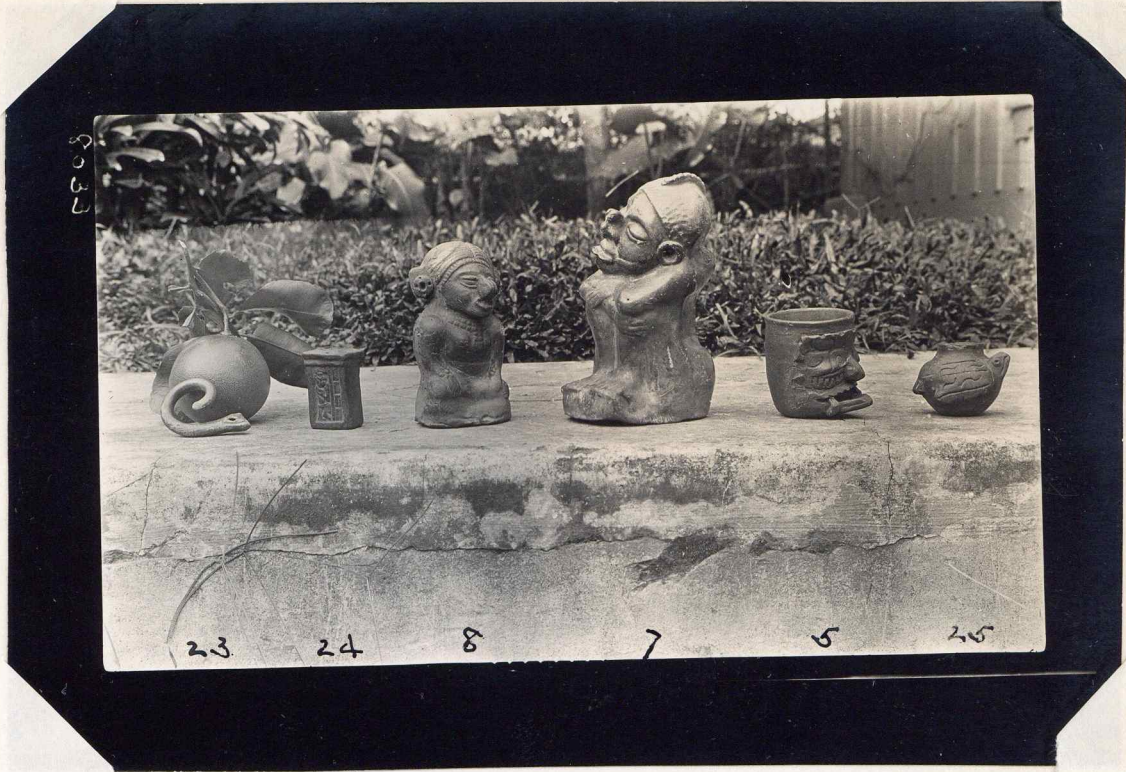
250

8032



13 10 21 1 22 16

251



252

Burkitt Nos. 253-261.

Palo Gordo. (San Vicente?)

(Kuhn, manager?).

Notes on boxes as above are
by J. A. Mason - he thinks they
are his own, not from
Burkitt. They were here
together, 1930.

See Burkitt. Got 11 16 p.c.

"Part of a Private collection
in Palo Gordo."



253

Kuhn,
Polo Gardo
(f.a.m.)

neg. made '62

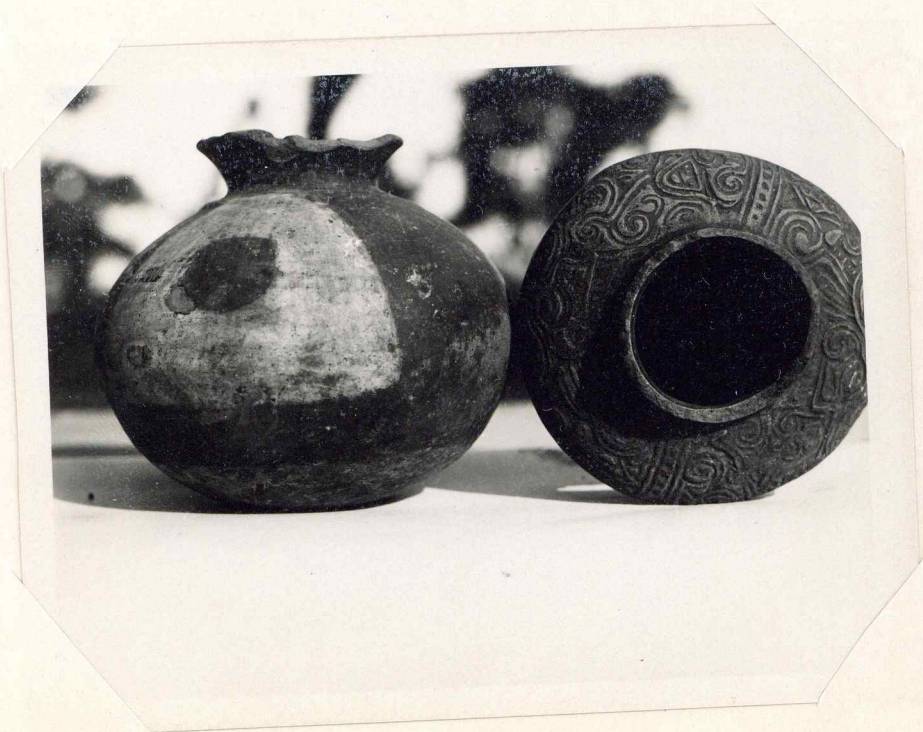


254 "

neg.



Kuhn,
Polo Gordon
255 17.0.22
Pol.



256 "
Pol.



Kuhn.
Palo gado
257 (8am)

Pol.



258 "

Pol.



259

Kuhn,
Palo Verde
Sam
neg.



260

neg.



261

Kuhn,
Polo Gordo
(J.O.M.)

Pol.