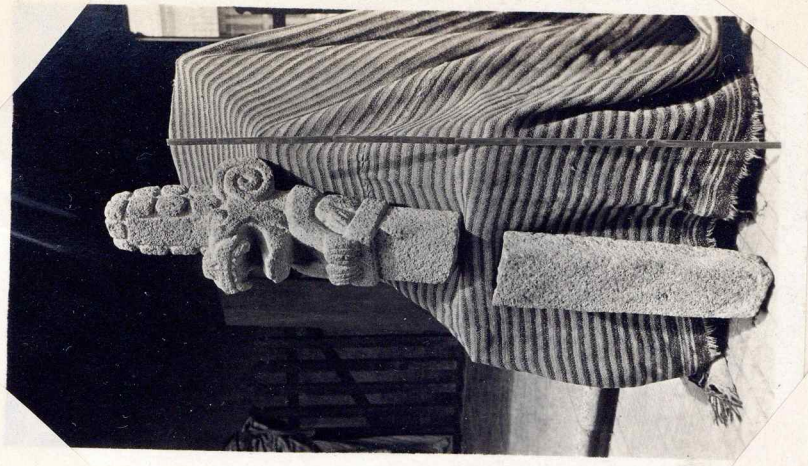


204  
(number  
used  
twice).



< Pacific Slope?

CAD no 1095

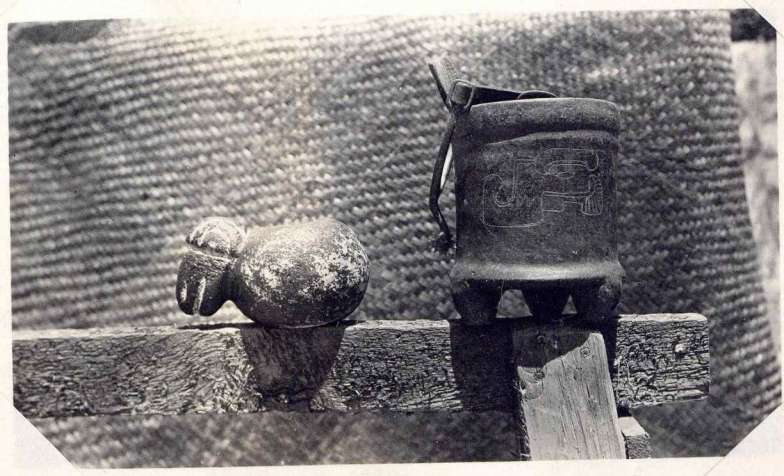
Salola Province,

Estado called  
Hermosilla.

204

"The image of a CAD bear, seated on a square block. The bear has a tall headdress".

NA:  
(Mus. CAD 11874  
Burr. 1095).



"Stone ball"  
with "handle!"

CAD NO. 1101

1100

204

"On the right side is a quasi-cylindrical hood, with three hollow rattling feet. On the left hand side is a flattened stone ball, having a handle."

1101: "St. Matthews", couple of leagues w. of Quitzaltemango. (Highlands).

Both of these agree with Catalogs - B. used the number twice. I believe he later changed one of the numbers, but I could not find the place.



Highlands

205

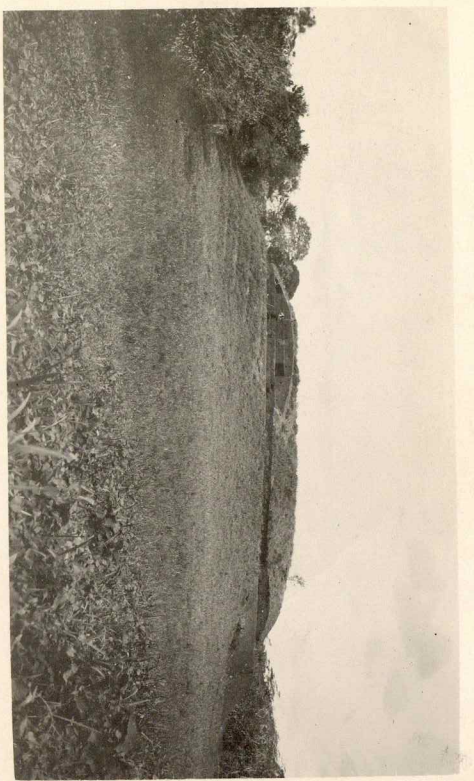
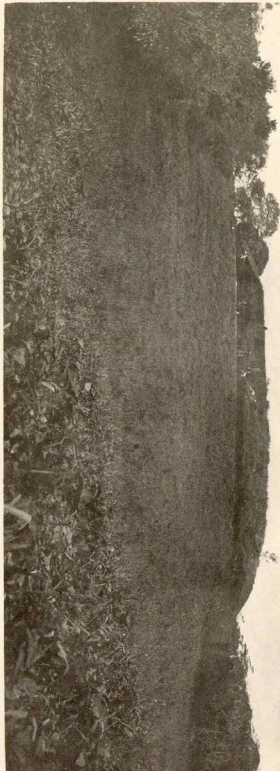
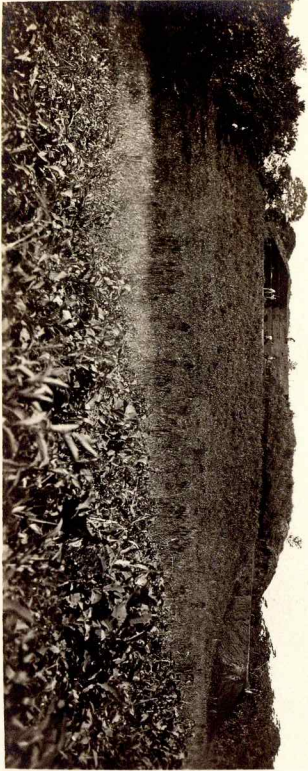
Museo Cat 1102. From place west of San Matthews - about 1/2 way  
Mun Cat NA/11881 between S. Mat. and S. Marcos (i.e. San Marcos).  
San Matthews is couple of leagues w. of Quezaltenango.

No. 205  
A human figure, kneeling, with  
the hands tied behind the back.  
Cat. No. 1102

2 typed labels clipped to print.  
Jan 1943.

See Burkett's letter  
Feb 7, 1927. (Per d. card).  
Copied portion does not  
mention this.

catalog # 206-221



206

206 - to 209

"advancing trench."

Letter Jan. 22, 1928

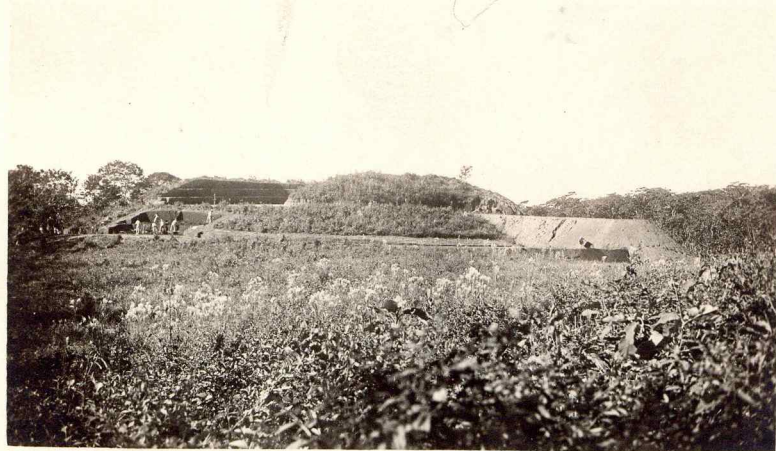
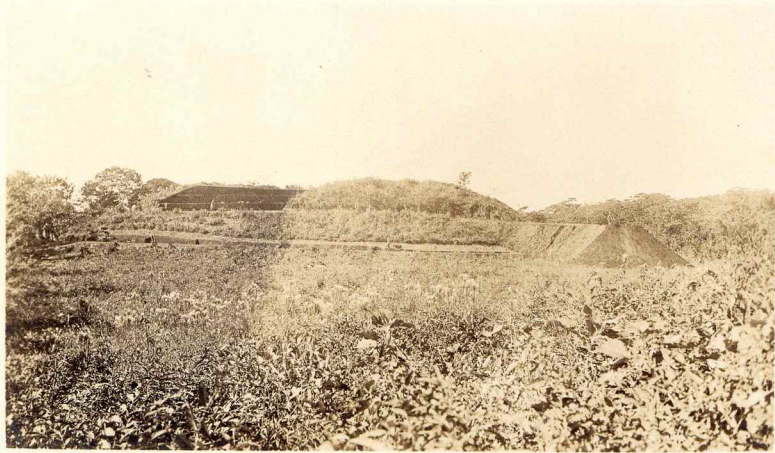
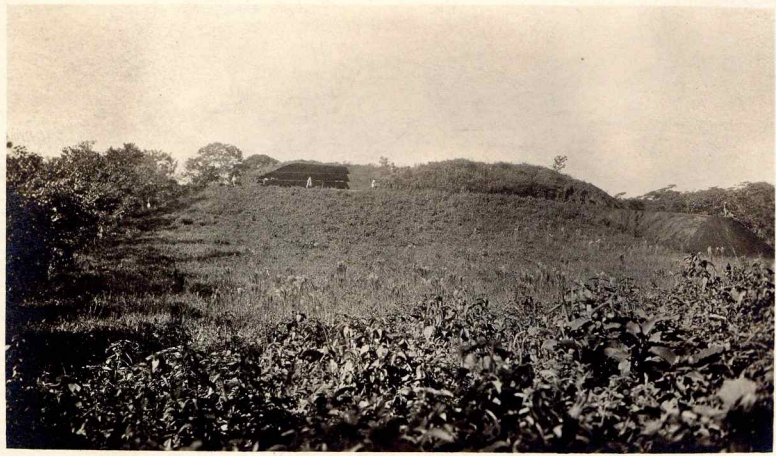
ON

207

ON

208

ON



209

Fig ~~15~~ 15

210

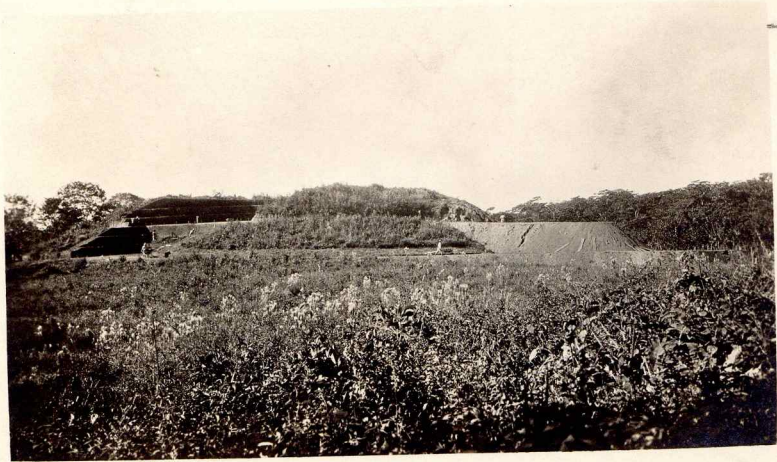
advancing trench

ON

211

Fig ~~16~~ 16

~~Fig 2~~



212

213

By ~~16~~ 17

214

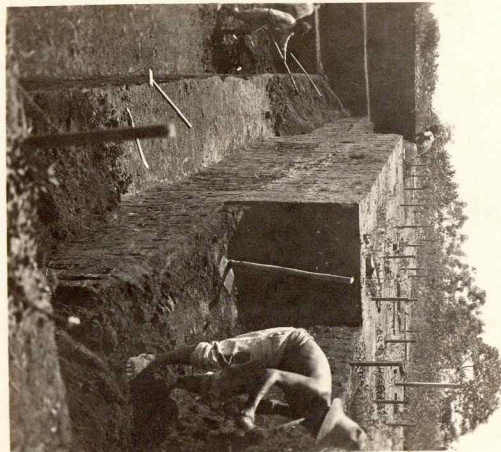
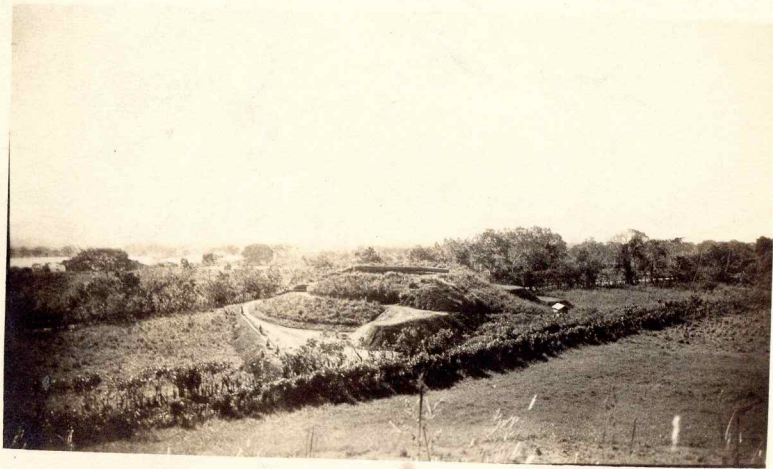
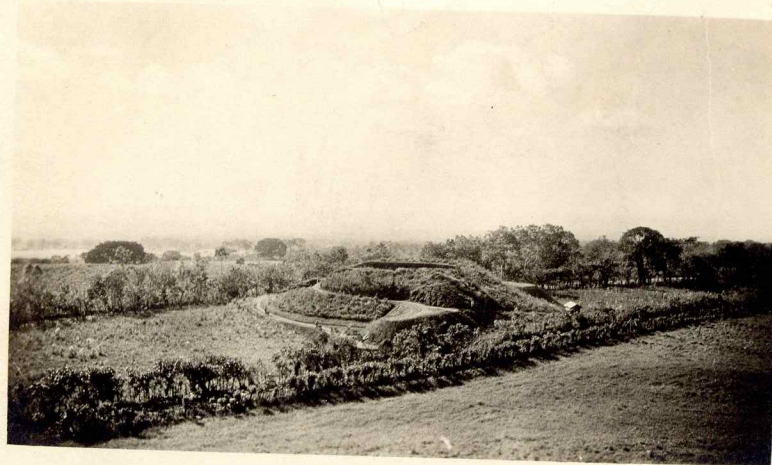
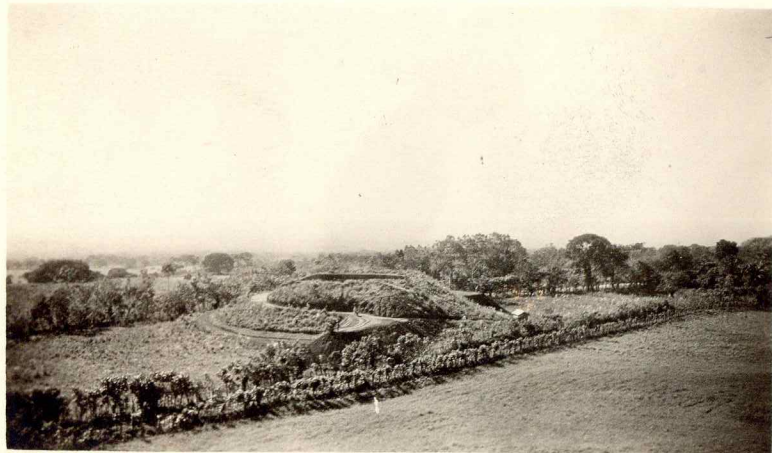
211-214 - "progress of  
nine metre digging"

Burkett

Guatemala

~~By 14~~

By ~~16~~ 18



215  
" Contemporary with 210 "  
Burkit

July ~~14~~ 19  
~~13~~

216

NO

217

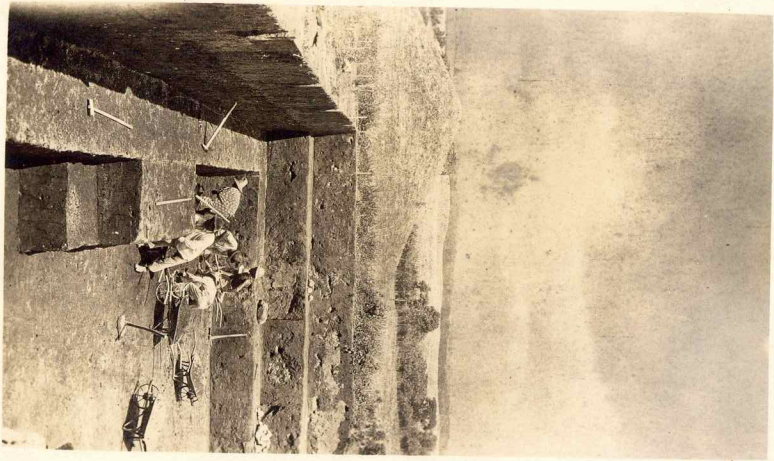
" Contemporary with 214 "  
Burkit

July ~~14~~ 20  
~~13~~

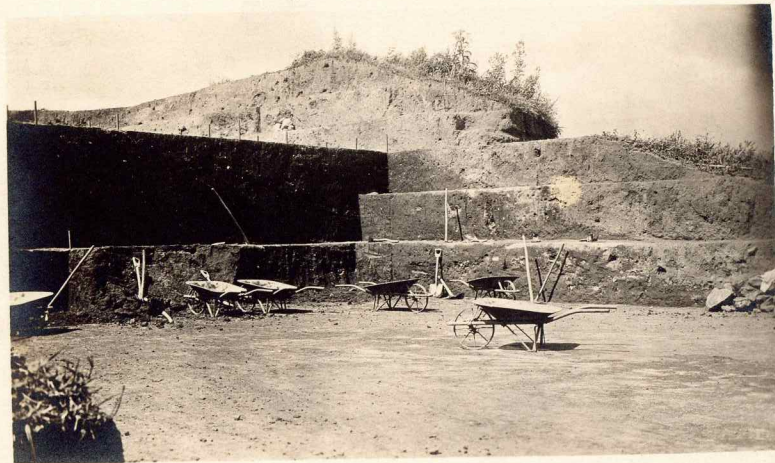
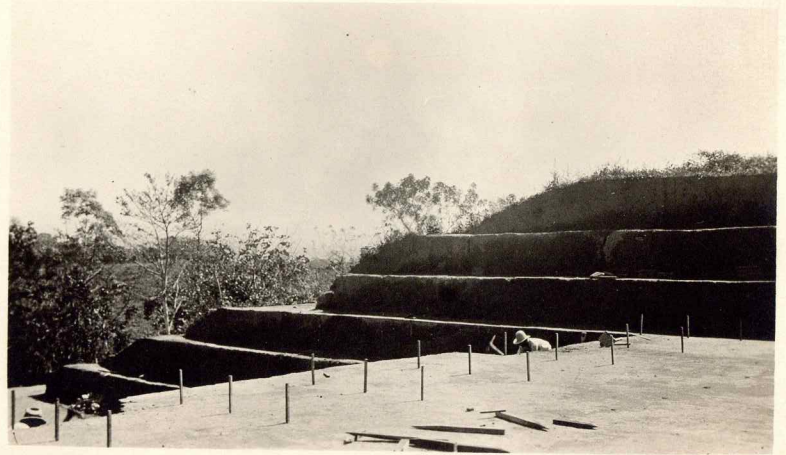
218

July ~~14~~ 21

218 - 221  
" Digging at close range "  
Burkit



K



219

~~21~~ 22  
By ~~21~~

220

~~22~~  
By ~~22~~ 23

221

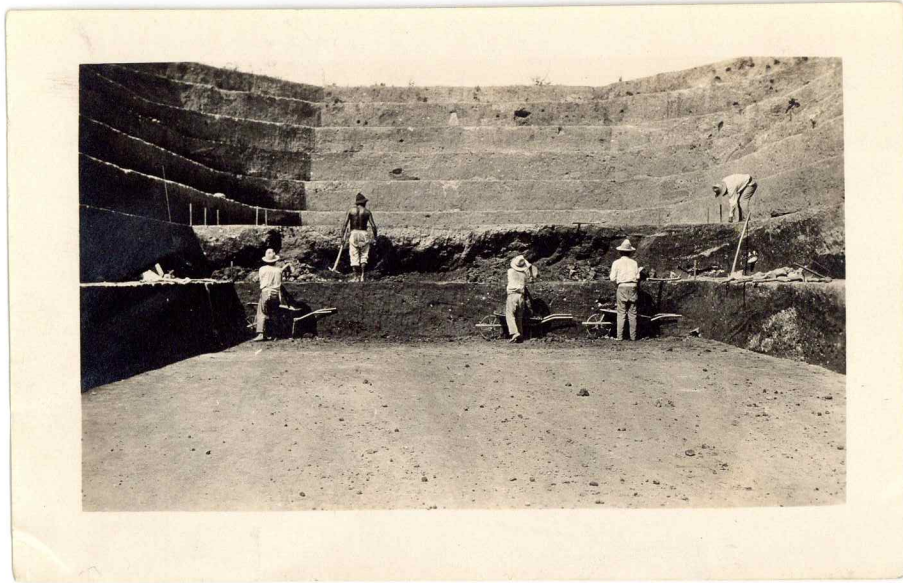
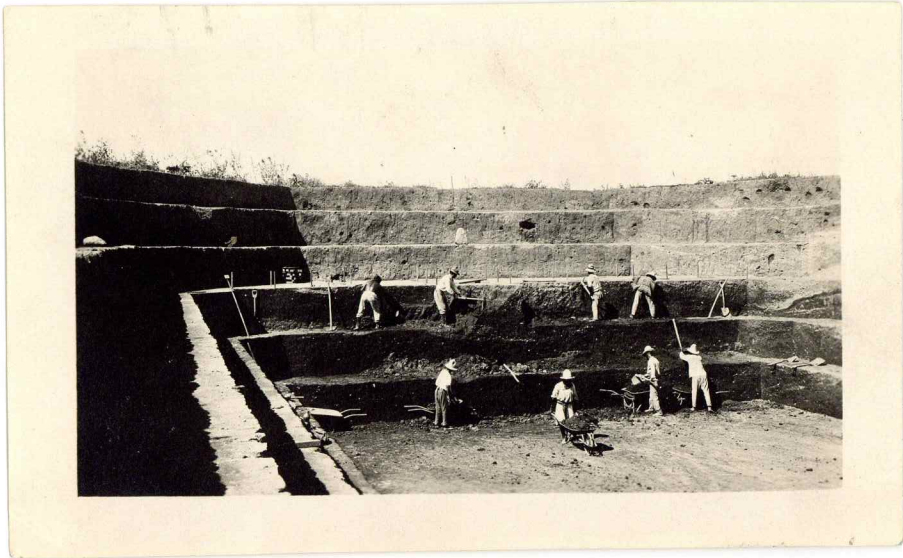
218-221

" Digging at close range"  
Bucket

By ~~23~~ 24

CATALOG #222-229

In 1103/4, photo 222 is described as "two carved stones from the province of Huehuetenango".  
Photo 222, however, shows an excavation of a site.



222 ~~Fig 22~~  
25

Letter of 1928, July 26

221A

"Letter of Aug. 12, 1928

"Last moments of nine  
metre digging"

223 ~~Fig 23~~ 26

Letter of 1928 July 26

223-224

"views of work at  
new level"

224

Letter of 1928, July 26

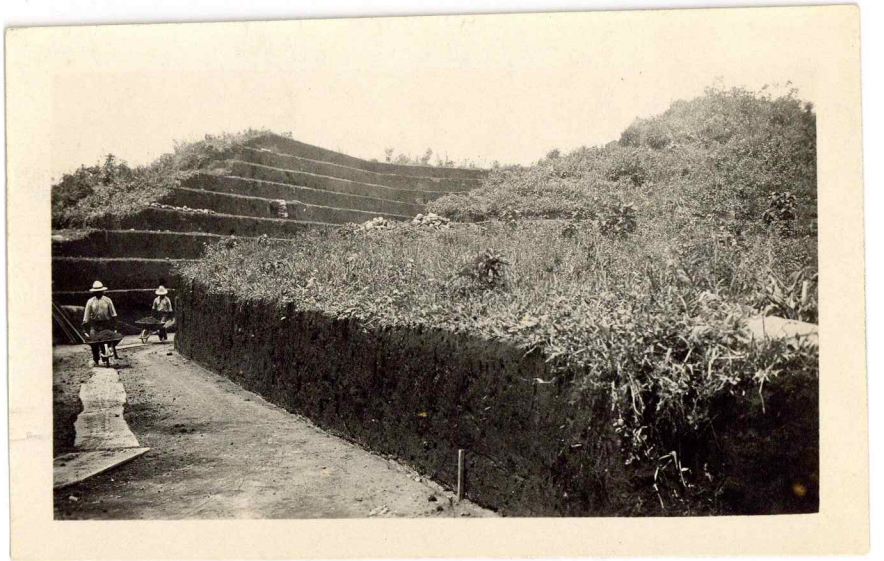
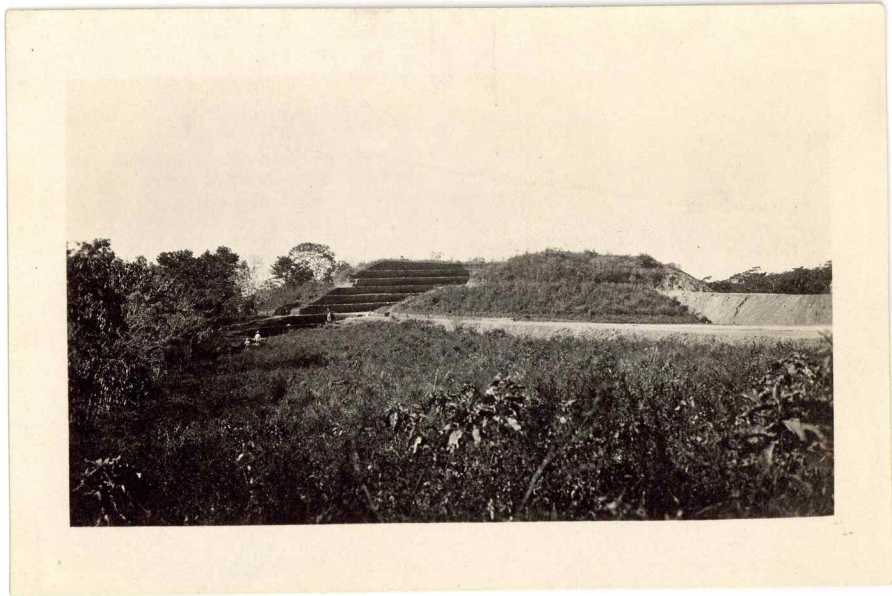
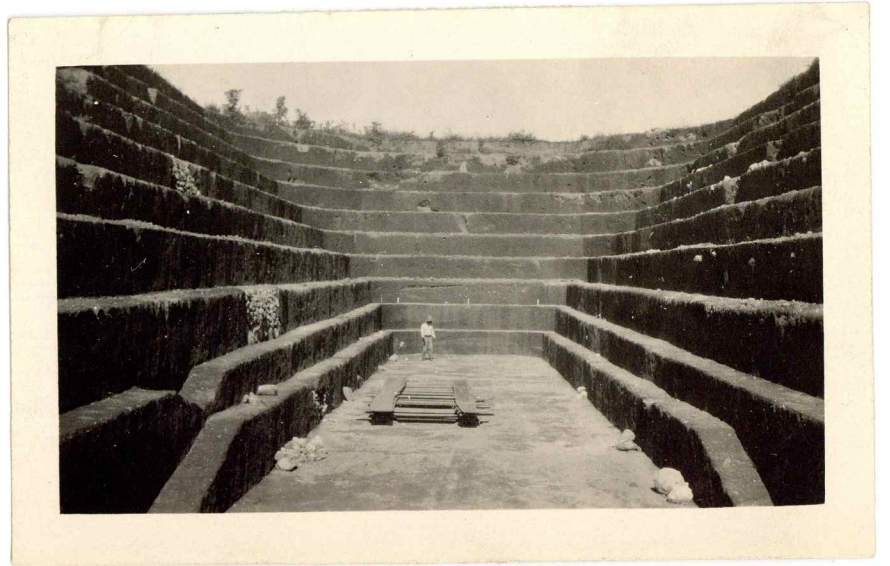
Fig 27

84-141705

225 ~~Fig 25~~ 28

Letter of 1928 July 26

225 } progress of the  
226 } 13 metre digging  
227 }



226

Letter of 1928, July 26

by ~~32~~ 31

227

" Letter of 1928 July 26 "  
Trench remains as in 227  
when digging stopped.

by ~~30~~ 30

228

Letter of 1928, July 26

" Same point of view as  
206 - 214

by ~~31~~ 31

229

" Letter of 1928, July 26 "  
In photo 229 you stand  
in sunken road

by ~~32~~ 32

234-241



284



285

234

For catalog number 11015

by ~~33~~ 33

235

For catalog number 11015

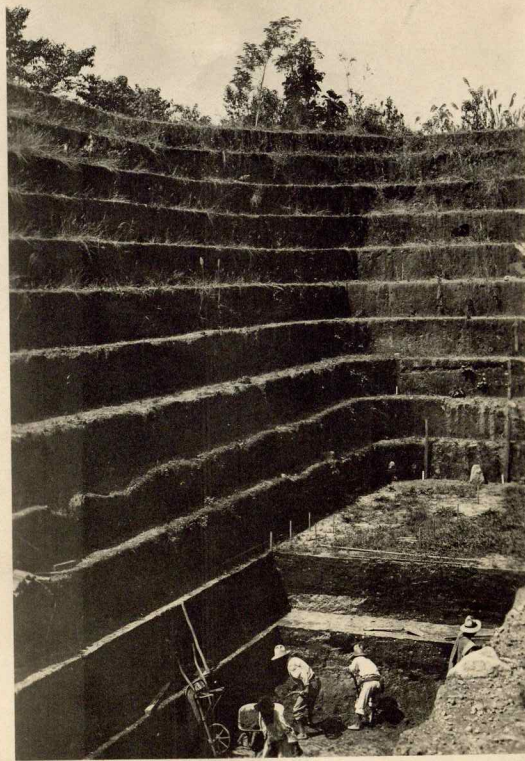
by ~~34~~ 34

← crop



286

← crop



287

236

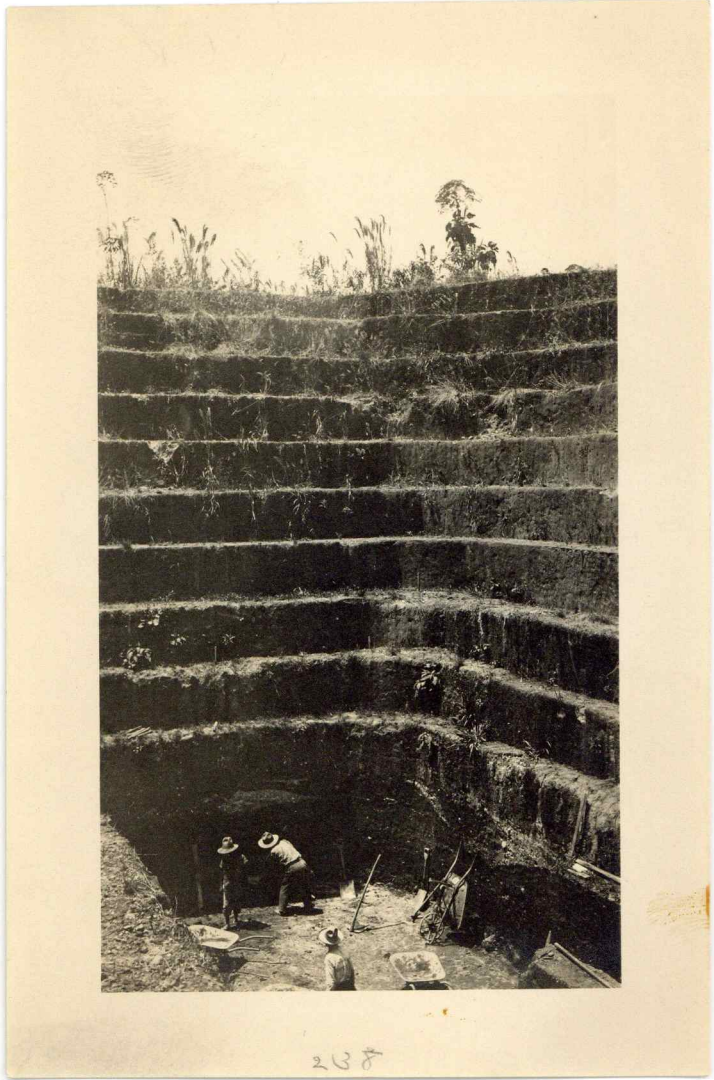
For catalog number 1105

2y ~~31~~ 35

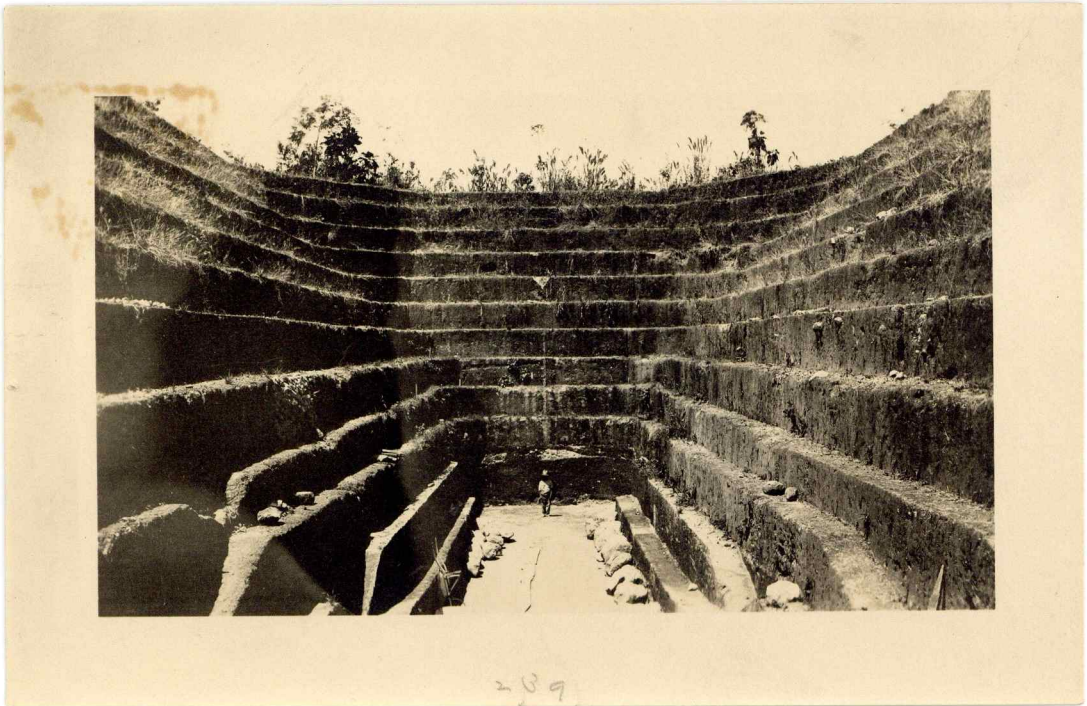
237

For catalog number 1105

2y ~~37~~ 35



238



239

238

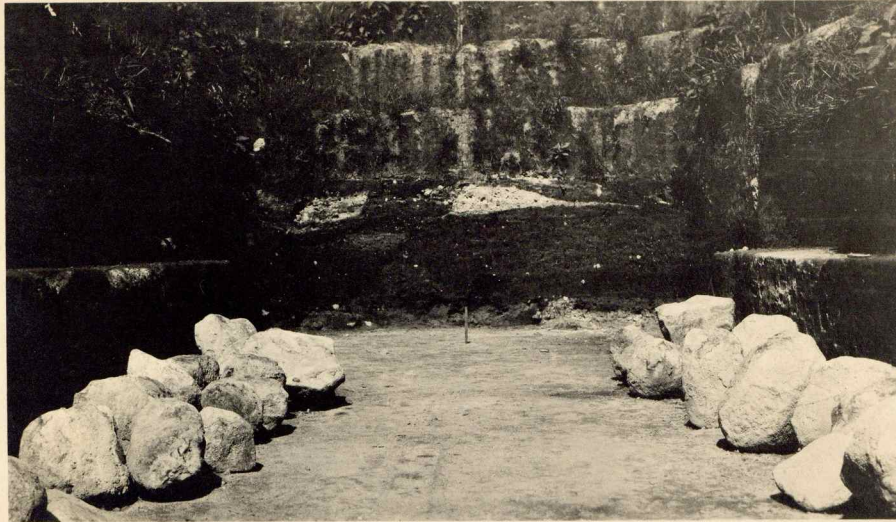
For catalog number 1105

dy ~~40~~ 37

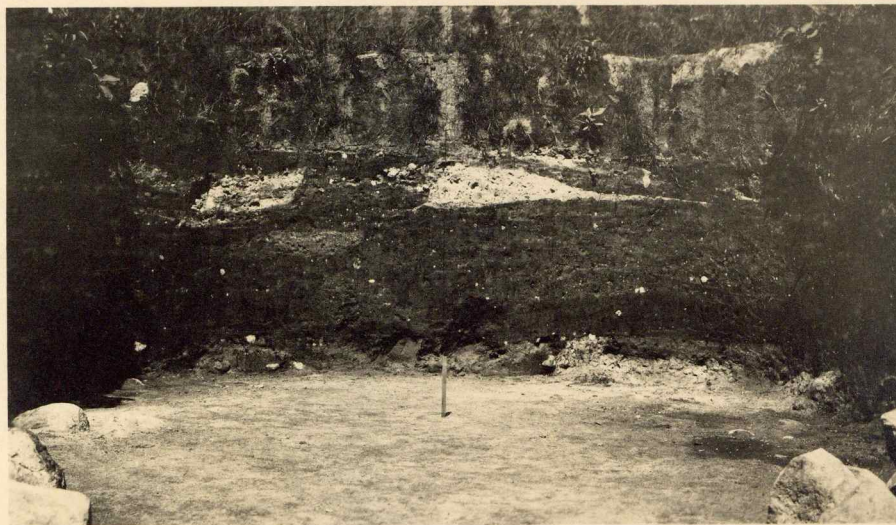
239

For catalog number 1105

dy ~~47~~ 38



240



241

240

For catalog number 1105

dy ~~42~~ 39

241

For catalog number 1105

dy 40

Huehuetenango

Burial Photos. 222

Kanter Collection?

See Card 1103/4.

Two carved stones, said to  
be from Huehuetenango.

See Burial's opinion,  
stolen from Kanter coll  
(Chacula).

No. is questionable; but was  
used and this print is OK:  
for its description.



222

"Two carved stones said to be from  
the province of Huehuetenango"

Cod No. 1103/4.

J. A. M. Digest of B. letters, Aug 18, 1927, says

2 of this number (222); one  
should be 221g.

Bureau photos from  
Kuntz Coll.

Subhead to loaned to us.

J. A. M. never saw them - not catalogued.

Burkitt, Nos. 230-233

Tarascan.

Transferred from Block album,  
Feb, 1943 H.S.P.

Following typed note was a first album sheet:

Nos 230 to 233  
Collection of Tarascan Antiquities  
offered Burkitt by a German trader  
and land owner in Mexico.  
See Burkitt's letter Aug. 12, 1928.



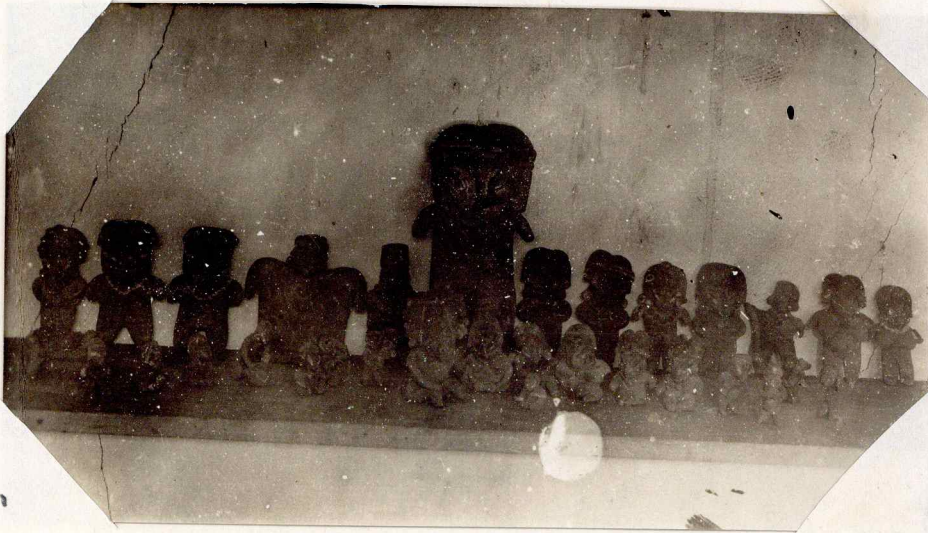
230



231



232

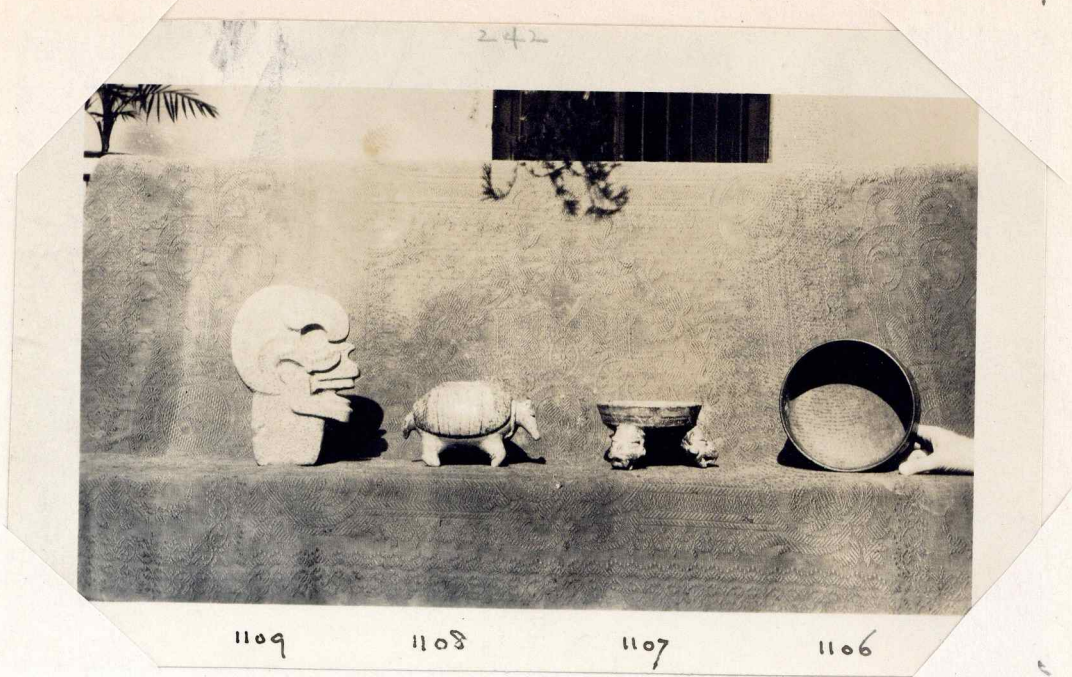


233

Bassett Photos

See. CoD 1105, h 142. 234-41 chowla, lost stores of diggers

242-243



242



243

Typed labels clipped to these:

242 with sunshine, 243 without.

- |          |   |
|----------|---|
| No. 1106 | a smooth earthen bowl                                 |
| 1107     | a fluted-bottomed bowl                                |
| 1108     | a vessel in the shape of an armadillo                 |
| 1109     | a ceremonial stone ax.<br>Representing a death's head |

See Cat 1106/9 (p 26).

Brought in Guatemala City from coll. of deceased Etahnir Trader.